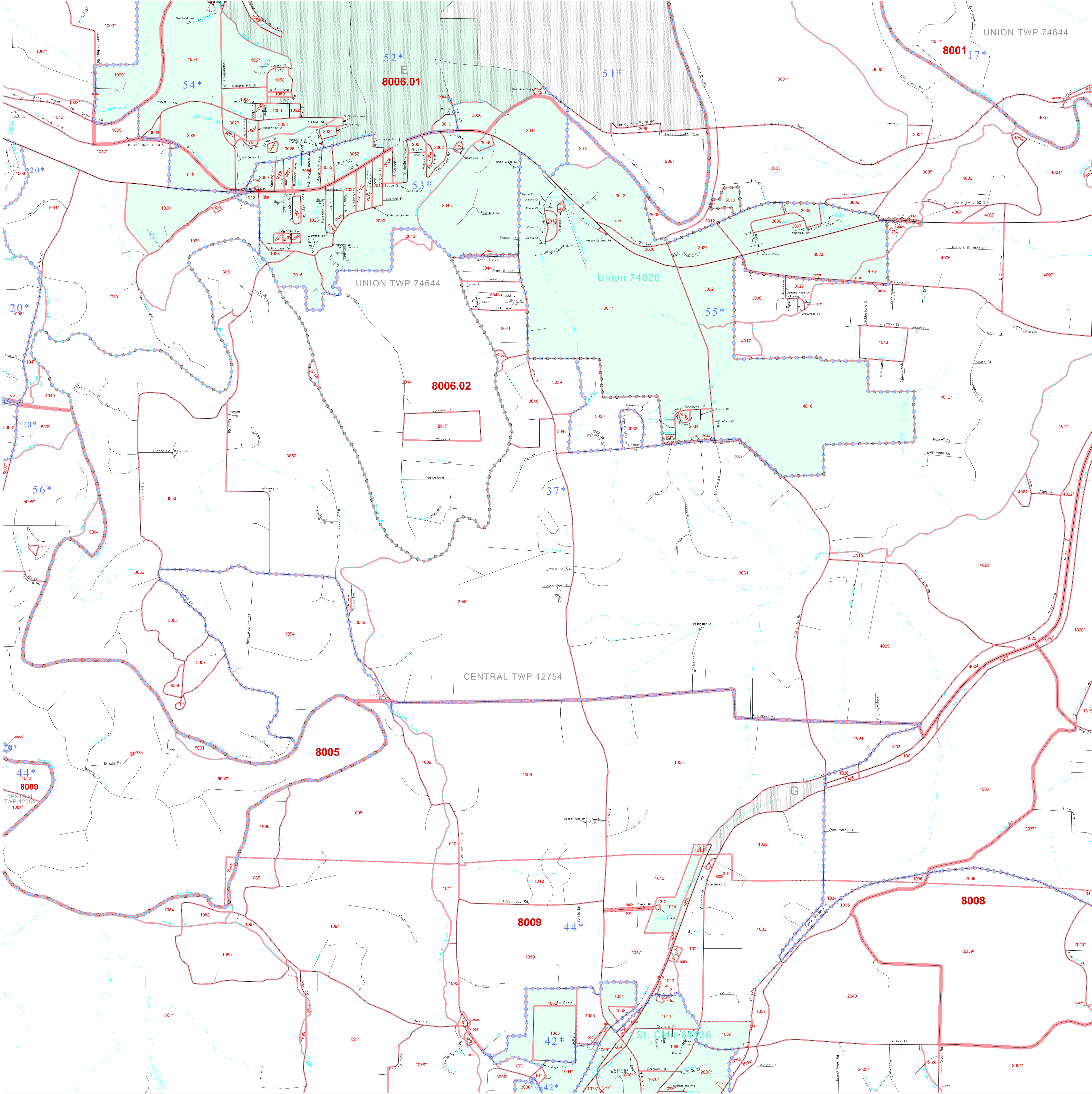


P. L. 94-171 COUNTY BLOCK MAP (CENSUS 2000)

38 456233N  
91 050727W

38 456233N  
90 924146W



**GEOGRAPHIC AREAS LEGEND**

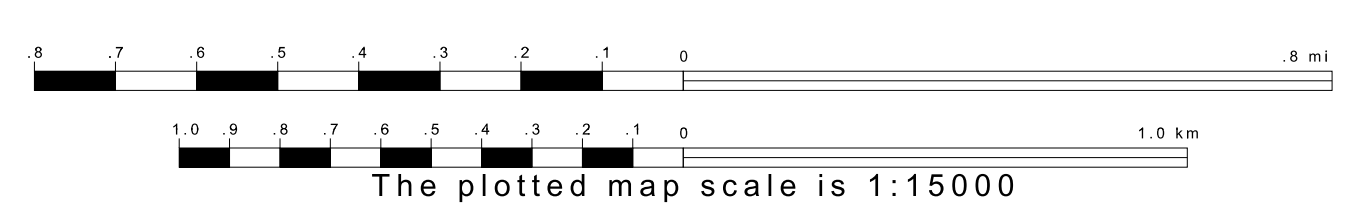
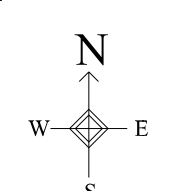
SYMBOL	NAME STYLE
*****	INTERNATIONAL
///////	STATE
■■■■■	COUNTY
□□□□□	MINOR CIVIL DIV.
Yellow box	Incorporated Place
Light Yellow box	Census Designated Place
Dotted line	Corporate Offset Boundary
Blue dashed line	Voting District
Red line	Census Tract
Blue dashed line with dots	BLOCK

Military     Inset     Out Area

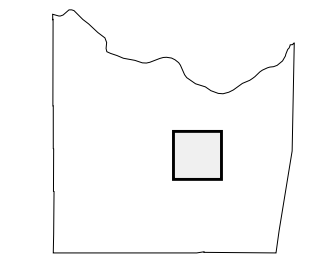
1 A "\*" following a place name indicates that the place is coterminous with a MCD. A "\*" indicates that the place is also a false MCD. In both cases, the MCD name is shown only when it differs from the place name.  
 2 A "\*" following a VTD code indicates an actual voting district. Its absence indicates that the VTD is a pseudo voting district or no information is available as to its status.  
 3 A "\*" following a block number indicates that the block number is repeated elsewhere in the block.

38 356655N  
91 050727W

38 356655N  
90 924146W



Sheet Location within County



Key to Adjacent Sheets

11	12	13
17	18	19
23	24	25

ST: Missouri (29)  
COU: Franklin (071)  
SHEET 18 OF 32 PARENT SHEETS

All legal boundaries and names are as of January 1, 2000. The boundaries shown on this map are for Census Bureau statistical data collection and tabulation purposes only; their depiction and designation for statistical purposes does not constitute a determination of jurisdictional authority or rights of ownership or entitlement. U.S. DEPARTMENT OF COMMERCE Economics and Statistics Administration U.S. Census Bureau

