

P. L. 94-171 COUNTY BLOCK MAP (CENSUS 2000)

39 151154N  
94 024704W

39 151154N  
94 024704W

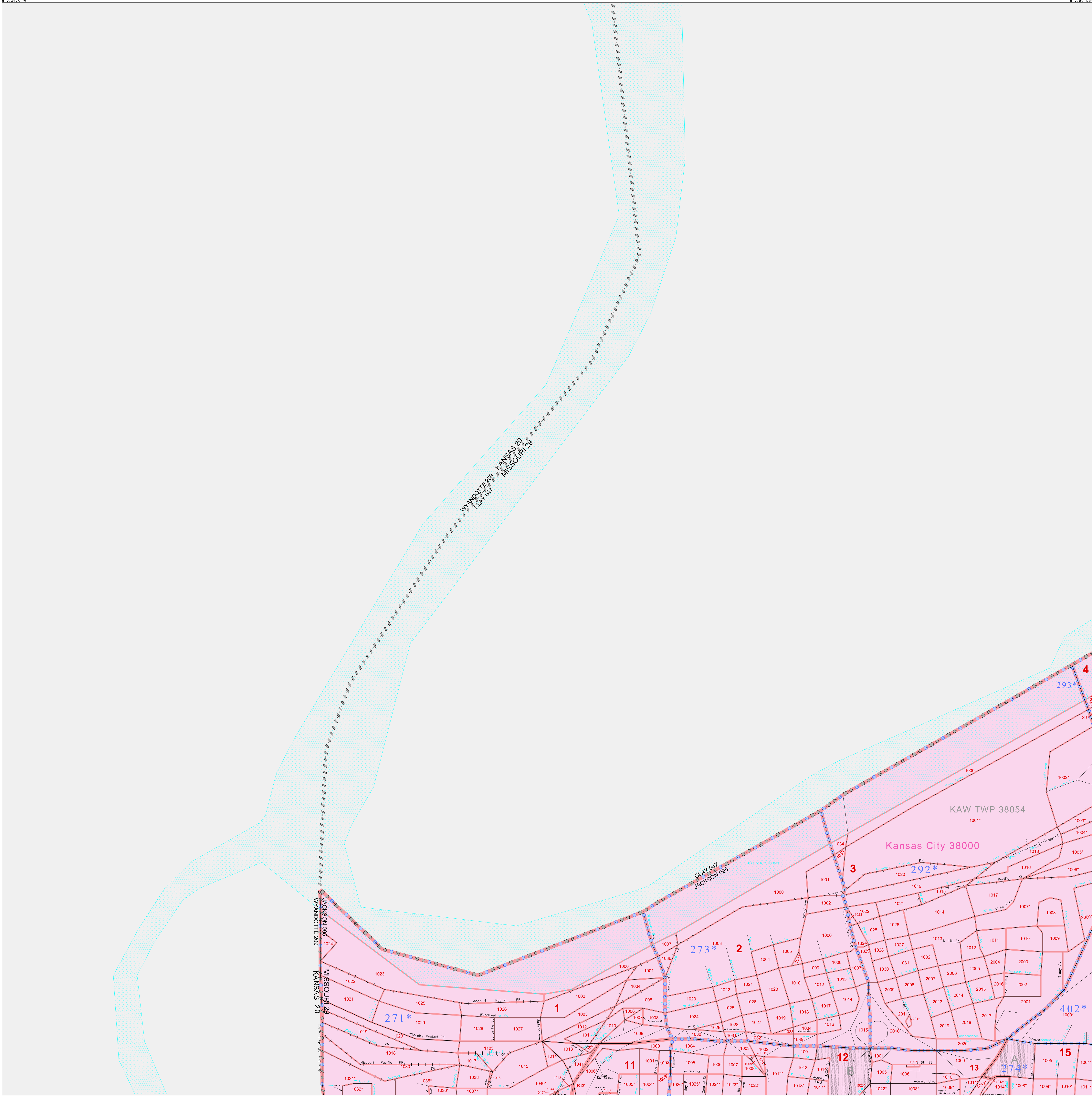
**GEOGRAPHIC AREAS LEGEND**

SYMBOL	NAME STYLE
*****	INTERNATIONAL
///////	STATE
■■■■■	COUNTY
○○○○○	MINOR CIVIL DIV <sup>1</sup>
■■■■■	Incorporated Place <sup>2</sup>
■■■■■	Census Designated Place <sup>2</sup>
-----	Corporate Offset Boundary
●●●●●	Voting District <sup>3</sup>
■■■■■	Census Tract
■■■■■	BLOCK <sup>3</sup>
■	Military
■	Inset
■	Out Area

1 A "\*" following a place name indicates that the place is coterminous with a MCD. A "-" indicates that the place is also a false MCD. In both cases, the MCD name is shown only when it differs from the place name.

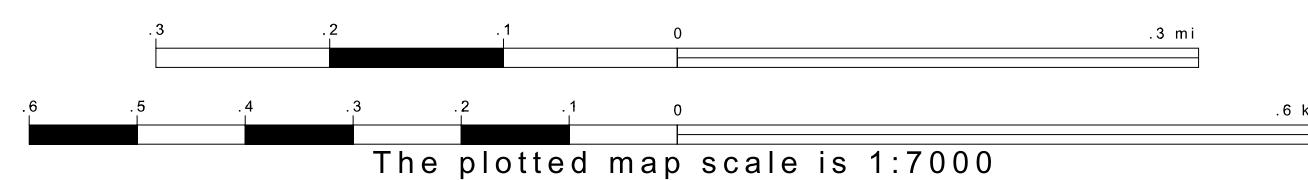
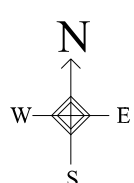
2 A "\*" following a VTD code indicates an actual voting district. Its absence indicates that the VTD is a pseudo voting district or no information is available as to its status.

3 A "\*" following a block number indicates that the block number is repeated elsewhere in the block.

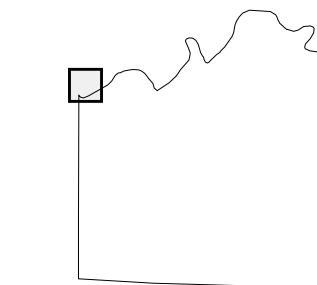


39 104708N  
94 024704W

39 104708N  
94 024704W



Sheet Location within County



Key to Adjacent Sheets

10	11
19	20

ST: Missouri (29)  
COU: Jackson (095)  
SHEET 10 OF 72 PARENT SHEETS

