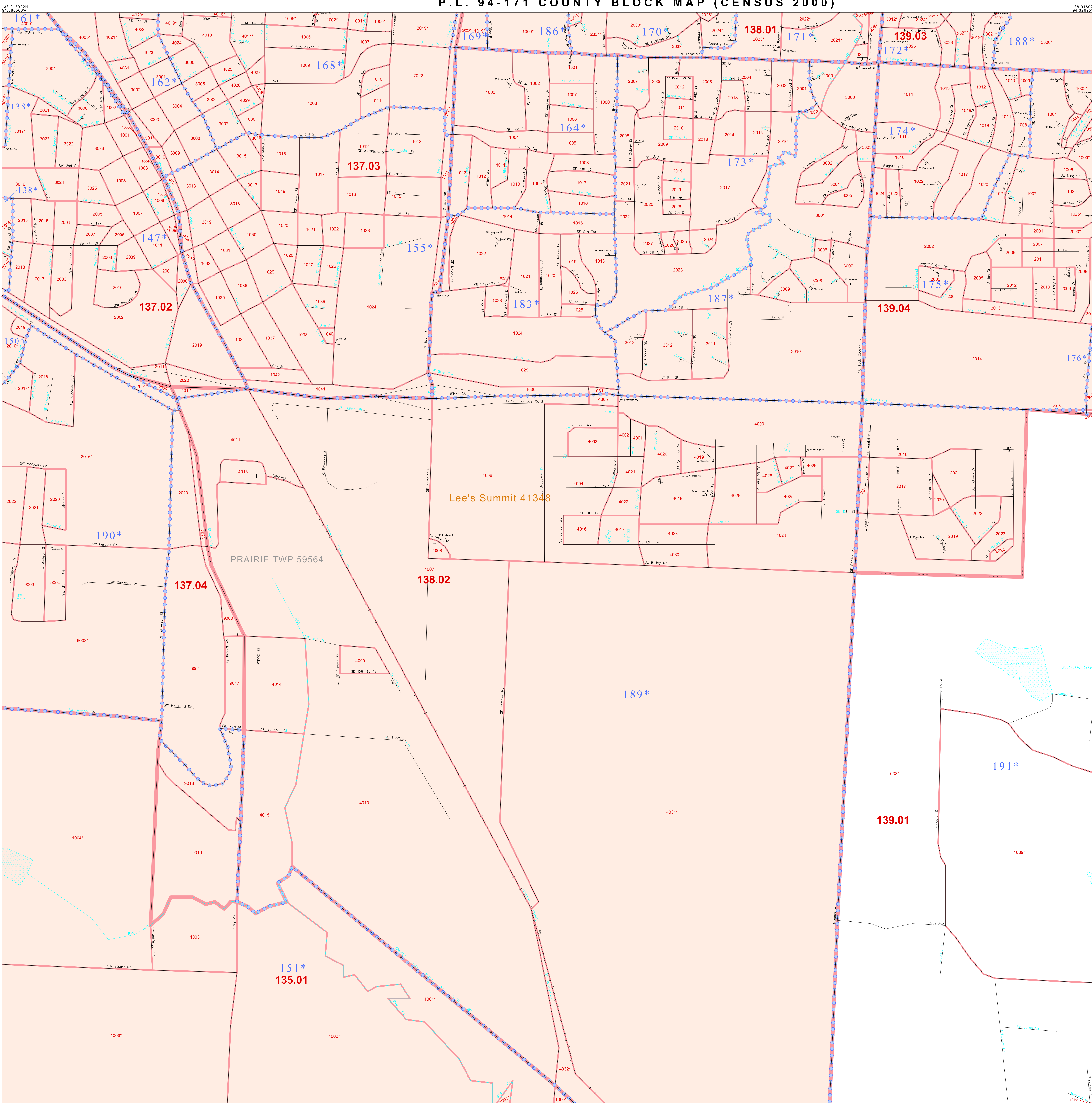


P. L. 94-171 COUNTY BLOCK MAP (CENSUS 2000)



GEOGRAPHIC AREAS LEGEND

- SYMBOL** **NAME** **STYLE**
- ***** INTERNATIONAL
- ////// STATE
- COUNTY
- MINOR CIVIL DIV.
- Yellow/Cyan **Incorporated Place¹**
- Yellow/Pink **Census Designated Place²**
- Corporate Offset Boundary
- Voting District³
- Red **Census Tract**
- Blue **BLOCK³**

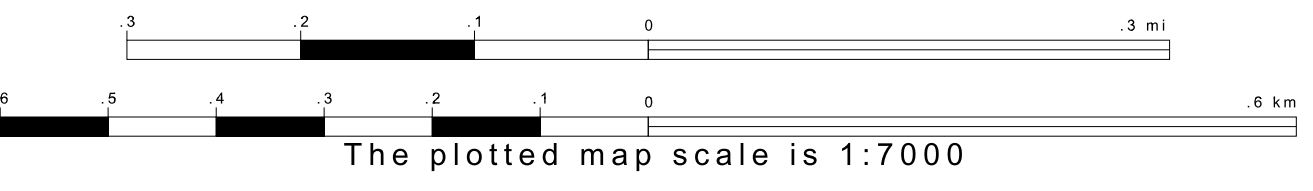
1 A "*" following a place name indicates that the place is coterminous with a MCD. A "-" indicates that the place is also a false MCD. In both cases, the MCD name is shown only when it differs from the place name.

2 A "*" following a VTD code indicates an actual voting district. Its absence indicates that the VTD is a pseudo voting district or no information is available as to its status.

3 A "*" following a block number indicates that the block number is repeated elsewhere in the block.

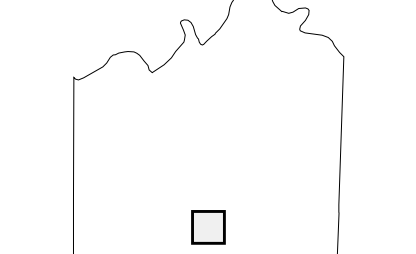
Inset Out Area

38 872476N 94 366503W



The plotted map scale is 1:7000

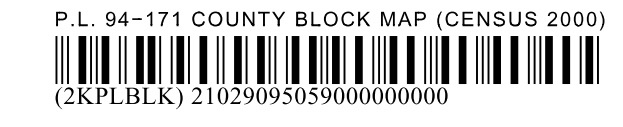
Sheet Location within County



Key to Adjacent Sheets

49	50	51
58	59	60
67	68	69

ST: Missouri (29)
COU: Jackson (095)
SHEET 59 OF 72 PARENT SHEETS



All legal boundaries and names are as of January 1, 2000. The boundaries shown on this map are for Census Bureau statistical data collection and tabulation purposes only; their depiction and designation for statistical purposes does not constitute a determination of jurisdictional authority or rights of ownership or entitlement. U.S. DEPARTMENT OF COMMERCE Economics and Statistics Administration U.S. Census Bureau