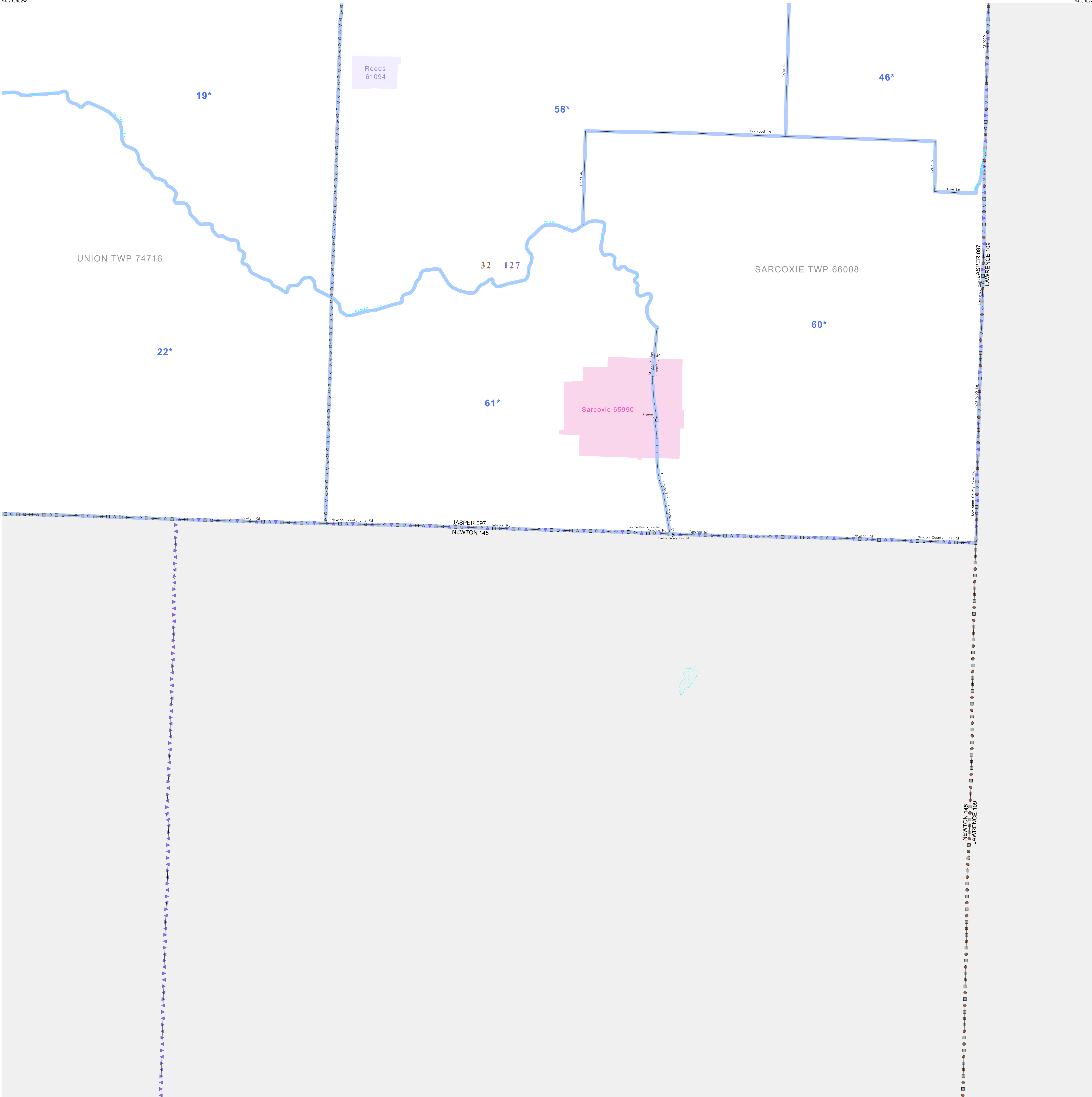


P.L. 94-171 VOTING DISTRICT/STATE LEGISLATIVE DISTRICT OUTLINE MAP (CENSUS 2000)

37 126572N
94 233882W

37 126572N
94 036740W



GEOGRAPHIC AREAS LEGEND

SYMBOL	NAME STYLE
*****	INTERNATIONAL
//////	STATE
□□□□	COUNTY
○ ○ ○ ○	MINOR CIVIL DIV. ¹
■ ■ ■ ■	Incorporated Place ¹
■ ■ ■ ■	Census Designated Place ²
—	Voting District
● ● ● ●	SLD-Senate
▲ ▲ ▲ ▲	SLD-House

Abbreviation Reference: AIR - American Indian Reservation; SDAISA - State Designated American Indian Statistical Area

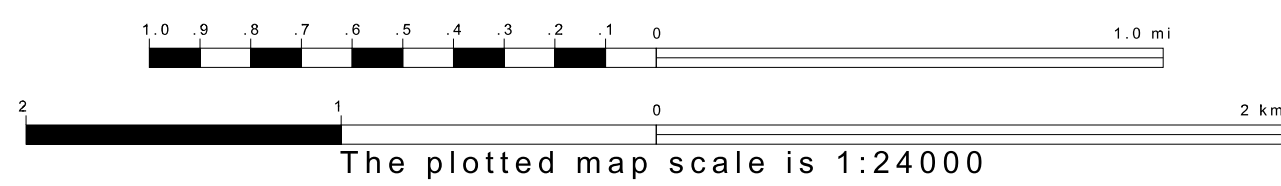
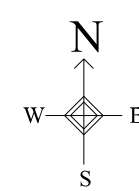
¹ A "*" following a place name indicates that the place is coterminous with a MCD. A "-" indicates that the place is also a false MCD. In both cases, the MCD name is shown only when it differs from the place name.
² A "*" following a VTD code indicates an actual voting district. Its absence indicates that the VTD is a pseudo voting district or no information is available as to its status.

Voting Districts

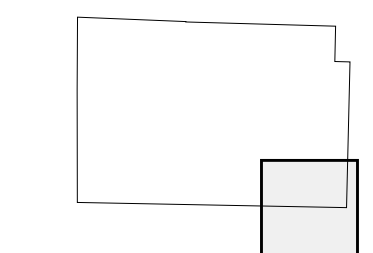
Code	Name
19*	Centennial Voting District
22*	Gen'g Voting District
46*	Lafayette Voting District
58*	Reeds Voting District
60*	SarcoxieNo.1 Voting District
61*	SarcoxieNo.2 Voting District

38 067277N
94 233882W

38 067277N
94 036740W



Sheet Location within County



Key to Adjacent Sheets

5	6
8	9

ST: Missouri (29)
 COU: Jasper (097)
 SHEET 9 OF 9 PARENT SHEETS

