

P. L. 94-171 COUNTY BLOCK MAP (CENSUS 2000)

37 106436N  
94 124020W

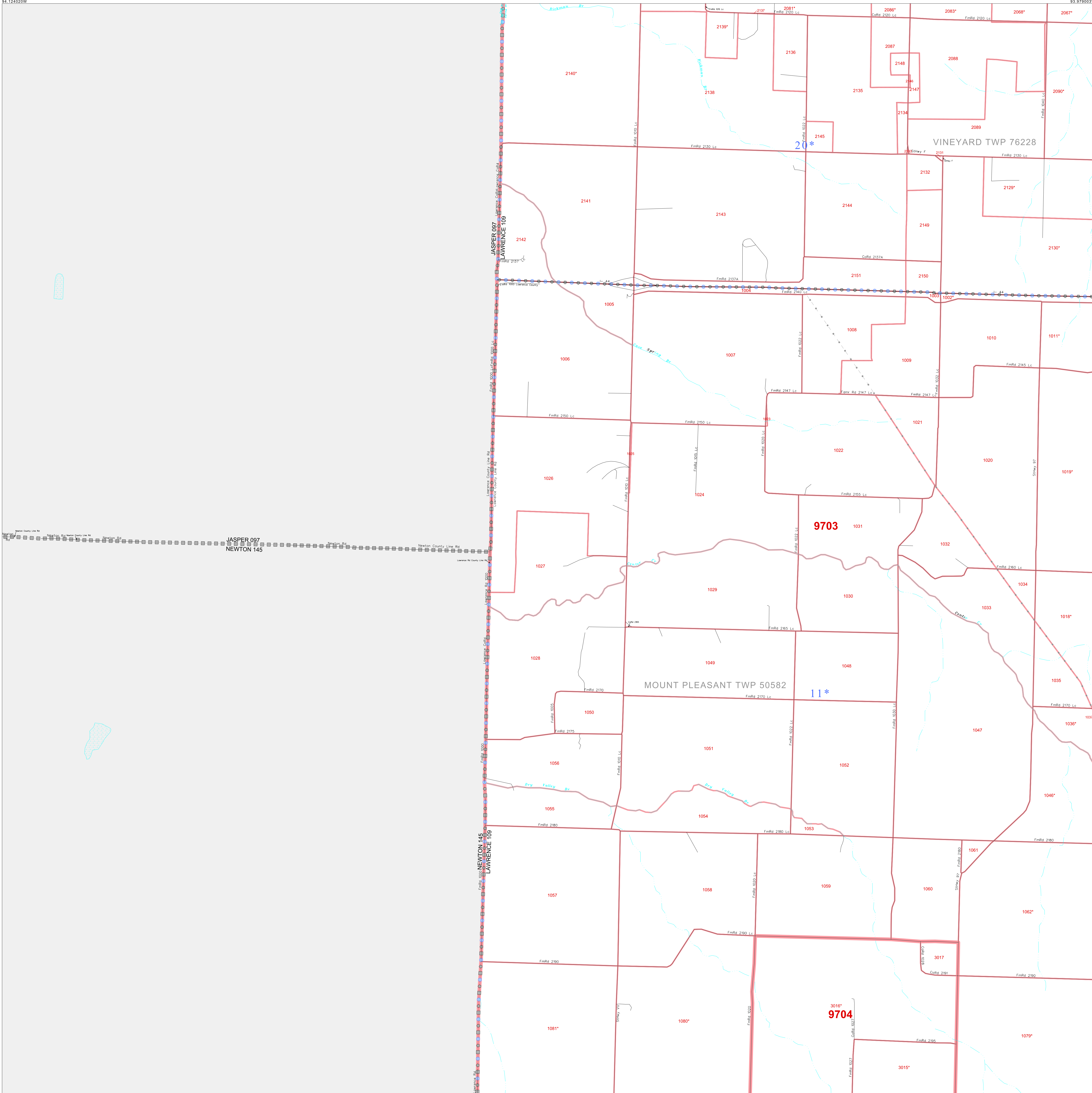
37 106436N  
93 979031W

GEOGRAPHIC AREAS LEGEND

SYMBOL	NAME	STYLE
*****	INTERNATIONAL	
//////	STATE	
	COUNTY	
□□□□□	MINOR CIVIL DIV.	
■	Incorporated Place <sup>1</sup>	
■	Census Designated Place <sup>2</sup>	
-----	Corporate Offset Boundary	
●●●●●	Voting District <sup>3</sup>	
—	Census Tract	
—	BLOCK <sup>3</sup>	
-----	Military	

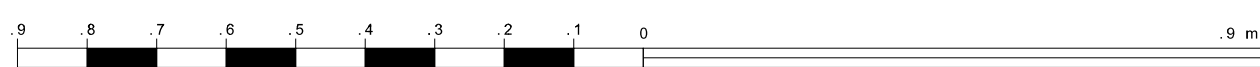
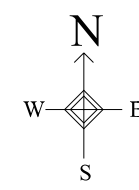
1 A "\*" following a place name indicates that the place is coterminous with a MCD. A "-" indicates that the place is also a false MCD. In both cases, the MCD name is shown only when it differs from the place name.  
 2 A "\*" following a VTD code indicates an actual voting district. Its absence indicates that the VTD is a pseudo voting district or no information is available as to its status.  
 3 A "\*" following a block number indicates that the block number is repeated elsewhere in the block.

Inset Out Area



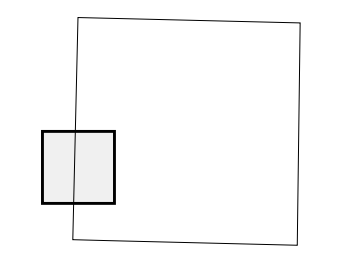
36 990281N  
94 124020W

36 990281N  
93 979031W



The plotted map scale is 1:17500

Sheet Location within County



Key to Adjacent Sheets

5	6
9	10
13	14

ST: Missouri (29)  
 COU: Lawrence (109)  
 SHEET 9 OF 16 PARENT SHEETS

