

P.L. 94-171 VOTING DISTRICT/STATE LEGISLATIVE DISTRICT OUTLINE MAP (CENSUS 2000)

39 785039N
93 416074W

39 785039N
93 209452W

Meadville 47036

GEOGRAPHIC AREAS LEGEND

| SYMBOL | NAME STYLE |
|-----------|--------------------------------------|
| ***** | INTERNATIONAL |
| ////// | STATE |
| □□□□□□ | COUNTY |
| ○ ○ ○ ○ ○ | MINOR CIVIL DIV. ¹ |
| ■ ■ ■ ■ ■ | Incorporated Place ¹ |
| ■ ■ ■ ■ ■ | Census Designated Place ² |
| — | Voting District |
| ● ● ● ● ● | SLD-Senate |
| ▲ ▲ ▲ ▲ ▲ | SLD-House |
| □ □ □ □ □ | Minority |
| □ □ □ □ □ | Inset |
| □ □ □ □ □ | Out Area |

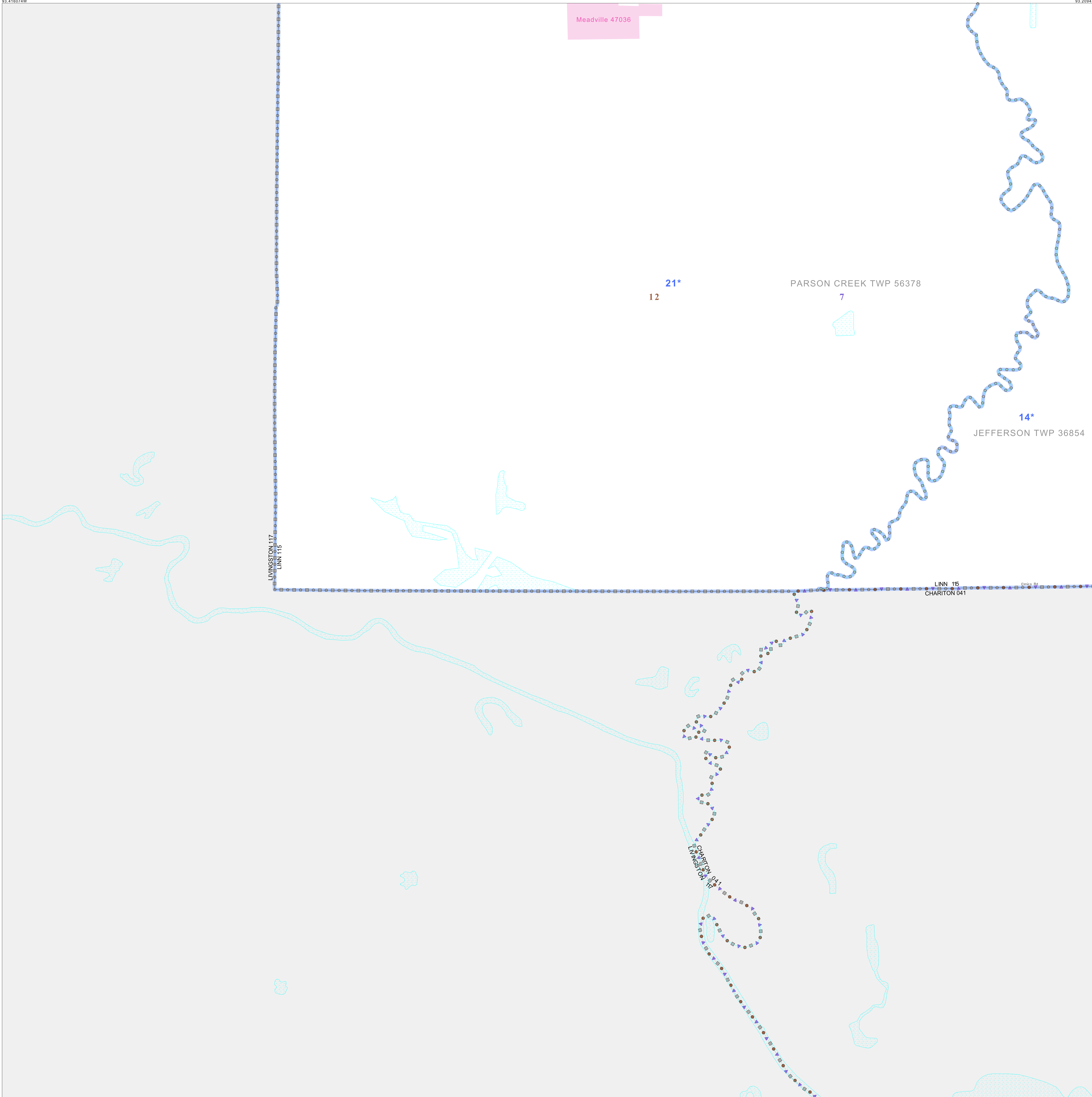
Abbreviation Reference: AIR - American Indian Reservation; SDAISA - State Designated American Indian Statistical Area

¹ A "*" following a place name indicates that the place is coterminous with a MCD. A "-" indicates that the place is also a false MCD. In both cases, the MCD name is shown only when it differs from the place name.

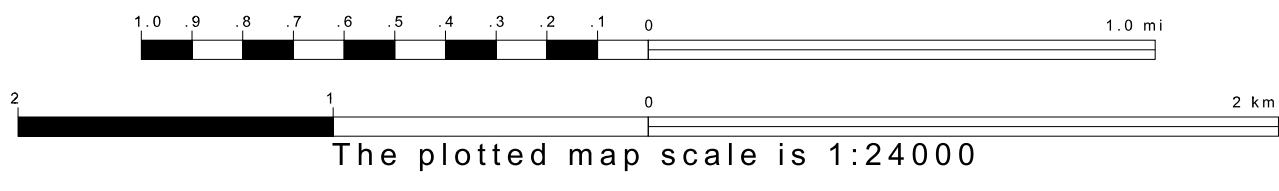
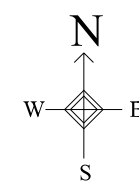
² A "*" following a VTD code indicates an actual voting district. Its absence indicates that the VTD is a pseudo voting district or no information is available as to its status.

Voting Districts

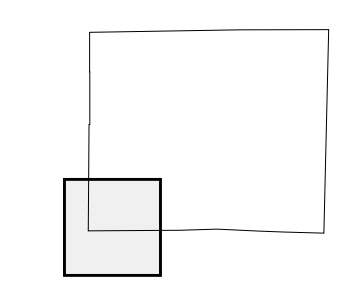
| Code | Name |
|------|-----------------------------|
| 14* | Jefferson Voting District |
| 21* | ParsonCreek Voting District |



39 622981N
93 209452W



Sheet Location within County



Key to Adjacent Sheets



ST: Missouri (29)
COU: Linn (115)
SHEET 7 OF 9 PARENT SHEETS

