

P.L. 94-171 VOTING DISTRICT/STATE LEGISLATIVE DISTRICT OUTLINE MAP (CENSUS 2000)

39.749033N
93.209452W

39.749033N
93.002831W

Laclede 39566

GEOGRAPHIC AREAS LEGEND

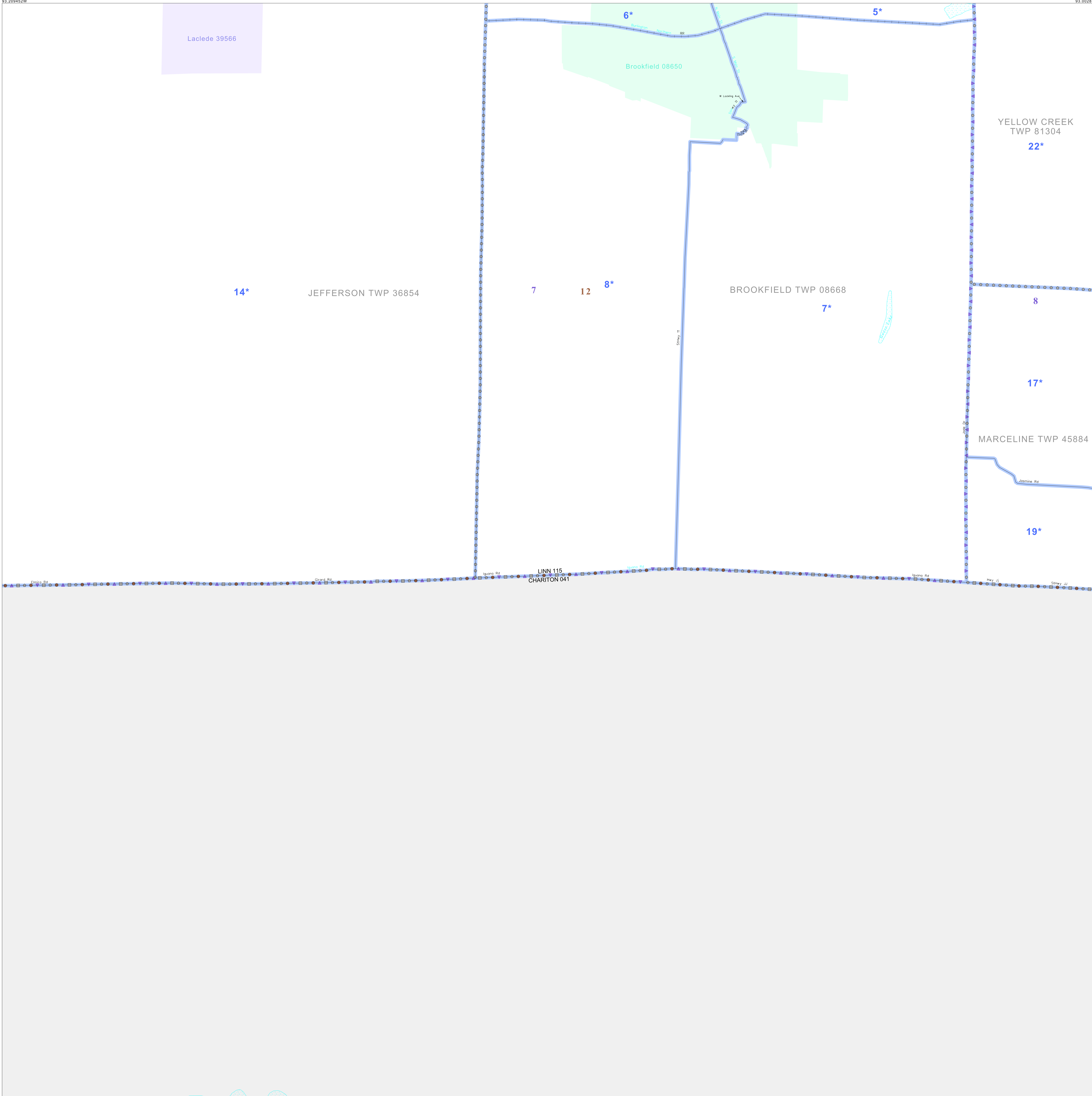
SYMBOL	NAME STYLE
*****	INTERNATIONAL
//////	STATE
□□□□□□	COUNTY
○●○●○●	MINOR CIVIL DIV. ¹
■	Incorporated Place ¹
■	Census Designated Place ²
—	Voting District
●●●●●●	SLD-Senate
▲▲▲▲▲▲	SLD-House

Abbreviation Reference: AIR - American Indian Reservation; SDAISA - State Designated American Indian Statistical Area

¹ A "*" following a place name indicates that the place is coterminous with a MCD. A "-" indicates that the place is also a false MCD. In both cases, the MCD name is shown only when it differs from the place name.
² A "*" following a VTD code indicates an actual voting district. Its absence indicates that the VTD is a pseudo voting district or no information is available as to its status.

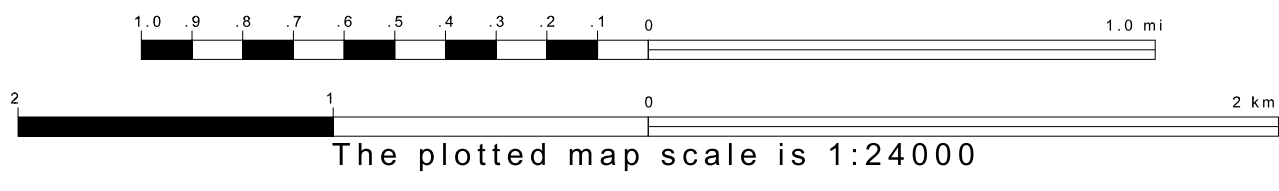
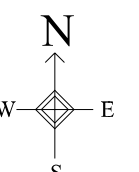
Voting Districts

Code	Name
5*	BrookfieldNo. 1 Voting District
6*	BrookfieldNo. 2 Voting District
7*	BrookfieldNo. 3 Voting District
8*	BrookfieldNo. 4 Voting District
14*	Jefferson Voting District
17*	MarcelineNo. 2 Voting District
19*	MarcelineNo. 4 Voting District
22*	YellowCreek Voting District

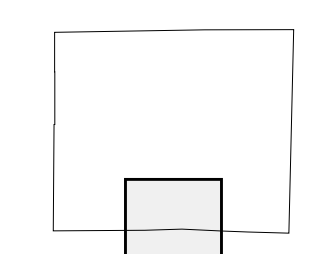


39.629818N
93.209452W

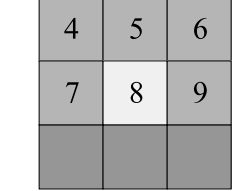
39.629818N
93.002831W



Sheet Location within County



Key to Adjacent Sheets



ST: Missouri (29)
 COU: Linn (115)
 SHEET 8 OF 9 PARENT SHEETS

