



LOG IN or REGISTER



KBIA

ABOUT US



met

SUPPORT US AND PLEDGE TODAY



WUIS 91.9



HOME FOOD FUEL FIELD PODCAST BLOG HARVESTNETWORK RESOURCES

SEARCH

At Harvest Public Media, our reporters and editors are truly in the field exploring stories of the food system. Through our Field Notes blog, we share our plans and experiences in covering this diverse agricultural landscape.

# FIELD NOTES

*A blog about cultivating stories from the ground up*

JUL 16, 2012



## New GM plants an attempt to stay ahead of nature

By: Camille Phillips



Patches of light-green weeds break up orderly rows of soybeans at the Bradford Research Center in Columbia, Mo. The soybeans are part of a trial of genetically modified plants engineered to be resistant to the herbicide HPPD. (Camille Phillips/Harvest Public Media).

Can science really control nature?

When you see genetically modified plants in action, it would seem so.

At a recent Pest Management Field Day, scientists at the Bradford Research Center in Columbia, Mo. showed trials of new genetically engineered soybeans to area farmers, chemical

sales reps and others. These particular plants have been genetically engineered to resist the herbicides HPPD and 2,4 D, much like other crops have been developed to be resistant to Monsanto's Roundup or Bayer Crop Science's LibertyLink. The appeal to farmers is obvious -- by allowing for the use of powerful pesticides, the plants provide better yields.

The Bradford scientists pointed out how a patchwork of light green weeds and dark green plants dissected by lines of clear earth showed the varied success of different trials. In some spots, patches of light green weeds over-ran the dark green rows of soybeans. In other rows, bare earth stood out starkly around the dark green leaves of the

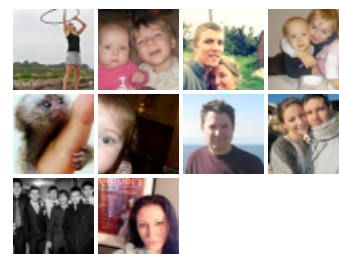
Find us on Facebook



Harvest Public Media

Like

1,736 people like Harvest Public Media.



Join the conversation

soybean plants.

In his thick Tennessee accent, master's student John Schultz introduced the HPPD-resistant soybean trials: "These are beans that are resistant to herbicides that we normally can't spray on soybeans. So if you were to go out there and spray Balance-Pro pre-emergent on any run-of-the-mill soybeans, it would not look like this. So don't do that."

The crowd, sitting in tarp-covered wagons pulled by tractors, chuckled in response. Balance-Pro is an HPPD herbicide approved for sale on certain crops, like corn. As of now, use of Balance-Pro is not approved for soybeans.

These new genetically modified soybeans have been created, Schultz said, because new herbicides are needed. Weeds are developing a tolerance to the most commonly used herbicides, like glyphosate. Glyphosate is the active ingredient in Monsanto's Roundup.

Schultz said they are testing HPPD on established weeds such as glyphosate-resistant waterhemp at other locations.

"And in the trials that we have there, the pre-emergent herbicides that we have put down in our HPPD trial have been spectacular, to say the least. It's been a month and a half, and there's still excellent, excellent control in those...So we're on track to have a very good technology with us in 2014, 2015, when these beans are starting to be released onto the market," Schultz said.

But despite the positive trial results, some are wary.

A man from the audience asked whether it was true that weeds were already developing a resistance to HPPD.

"There is some resistance; we should not lose sight of that," said Kevin Bradley, the lead researcher on the trials. "There is some resistance to HPPD herbicides in waterhemp in Illinois, Iowa, and I believe even Nebraska now."

"This is probably not that popular amongst my chemical folks here," Bradley added, "but most all of these crops are just a bigger Band-Aid. If we abuse them, they will — you will get resistance to them as well."

Which seems to indicate that nature eventually regains control.

**DISQUS** ■■■

DISQUS seems to be taking longer than usual. [Reload?](#)

**More like this:**

Full speed ahead into the science of the seed

Wheat harvest plagued by Mother Nature

As flooding rules the land, some farmers give in to Mother Nature

To plant or not to plant, that is the question

As beef prices stay low, small ranchers cry foul