

CENSUS TRACT OUTLINE MAP (CENSUS 2000)

37 076591N
89 630477W

37 076591N
89 630477W

ABBREVIATED LEGEND

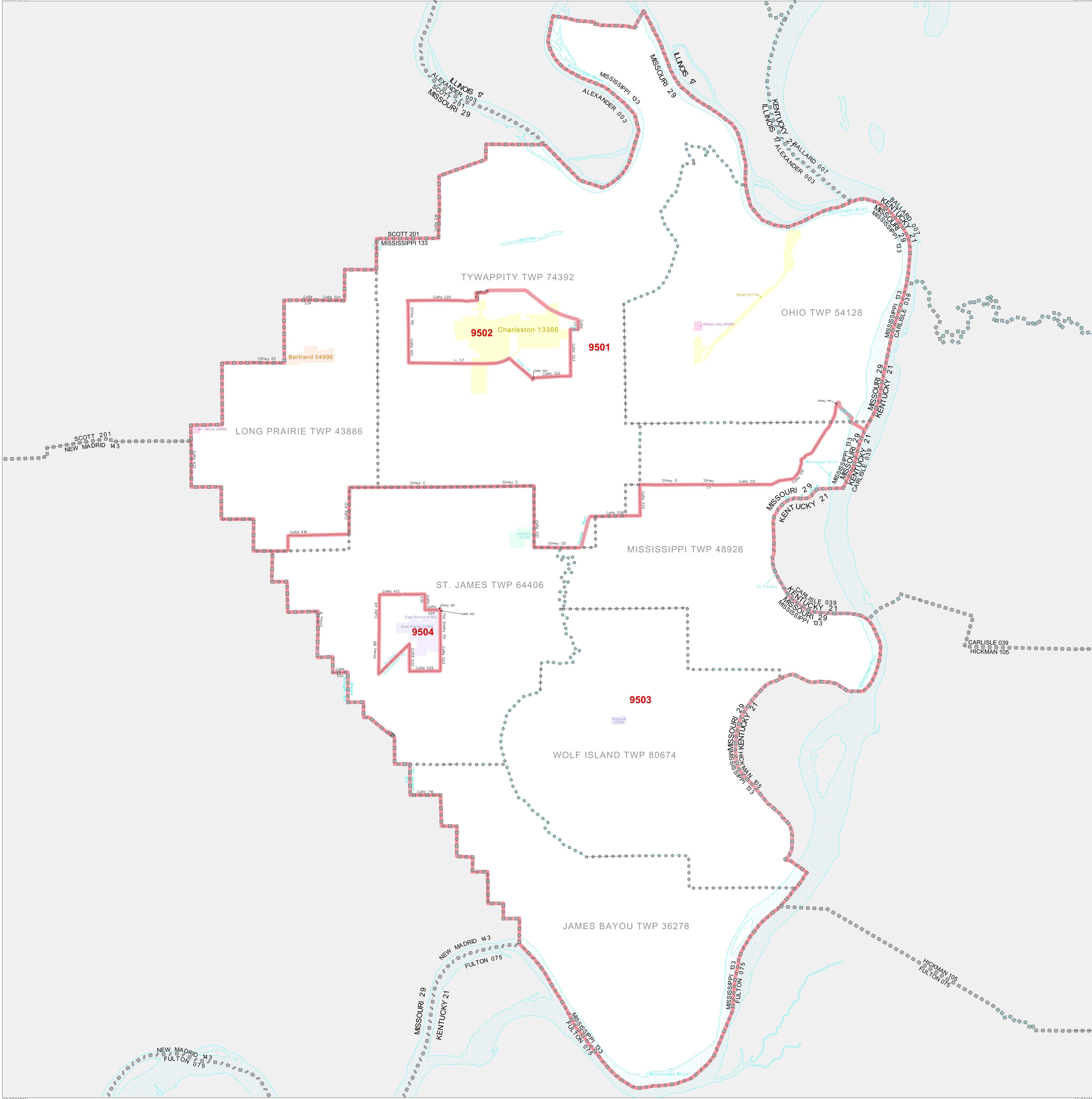
SYMBOL	NAME STYLE
*****	INTERNATIONAL
*****	AIR (FEDERAL)
*****	Trust Land
*****	OTSA / TDSA
*****	TRIBAL SUBDIVISION
*****	AIR (State)
*****	SDA/SA
*****	STATE
*****	COUNTY
*****	MINOR CIVIL DIV' Consolidated City
*****	Incorporated Place'
*****	Census Designated Place'
*****	Census Tract

Abbreviation Reference: AIR = American Indian Reservation; Trust Land = OTF-Reservation Trust Land; OTSA = Oklahoma Tribal Statistical Area; TDSA = Tribal Designated Statistical Area; Tribal Subdivision = American Indian Tribal Subdivision; SDA/SA = State Designated American Indian Statistical Area

* A "*" following a place name indicates that the place is contiguous with a MCD. A "-" indicates that the place is also a false MCD. In both cases, the MCD name is shown only when it differs from the place name.

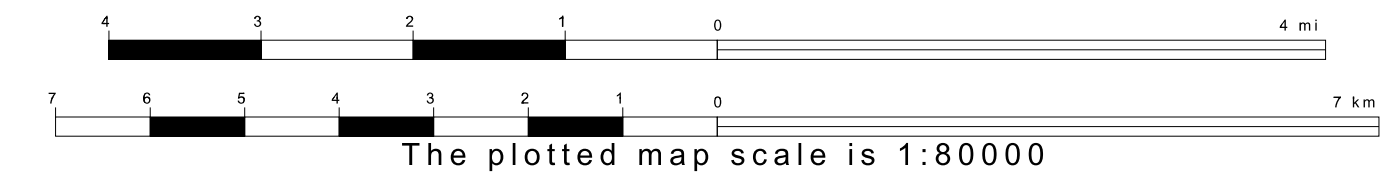
FEATURES	FEATURES
All Roads	Stream/Channel
Railroad	Intermittent Stream
Flow/Power Line	River/Lake
Physical Feature	Glacier
Visible Boundary	

Inset Out Area

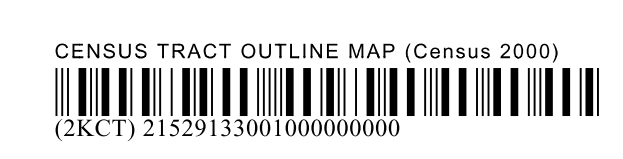


38 560370N
89 630477W

38 560370N
89 630477W



ST: Missouri (29)
COU: Mississippi (133)
SHEET 1 OF 1 PARENT SHEET



All legal boundaries and names are as of January 1, 2000. The boundaries shown on this map are for Census Bureau statistical data collection and tabulation purposes only; their depiction and designation for statistical purposes does not constitute a determination of jurisdictional authority or rights of ownership or entitlement. U.S. DEPARTMENT OF COMMERCE Economics and Statistics Administration U.S. Census Bureau