

P. L. 94-171 COUNTY BLOCK MAP (CENSUS 2000)

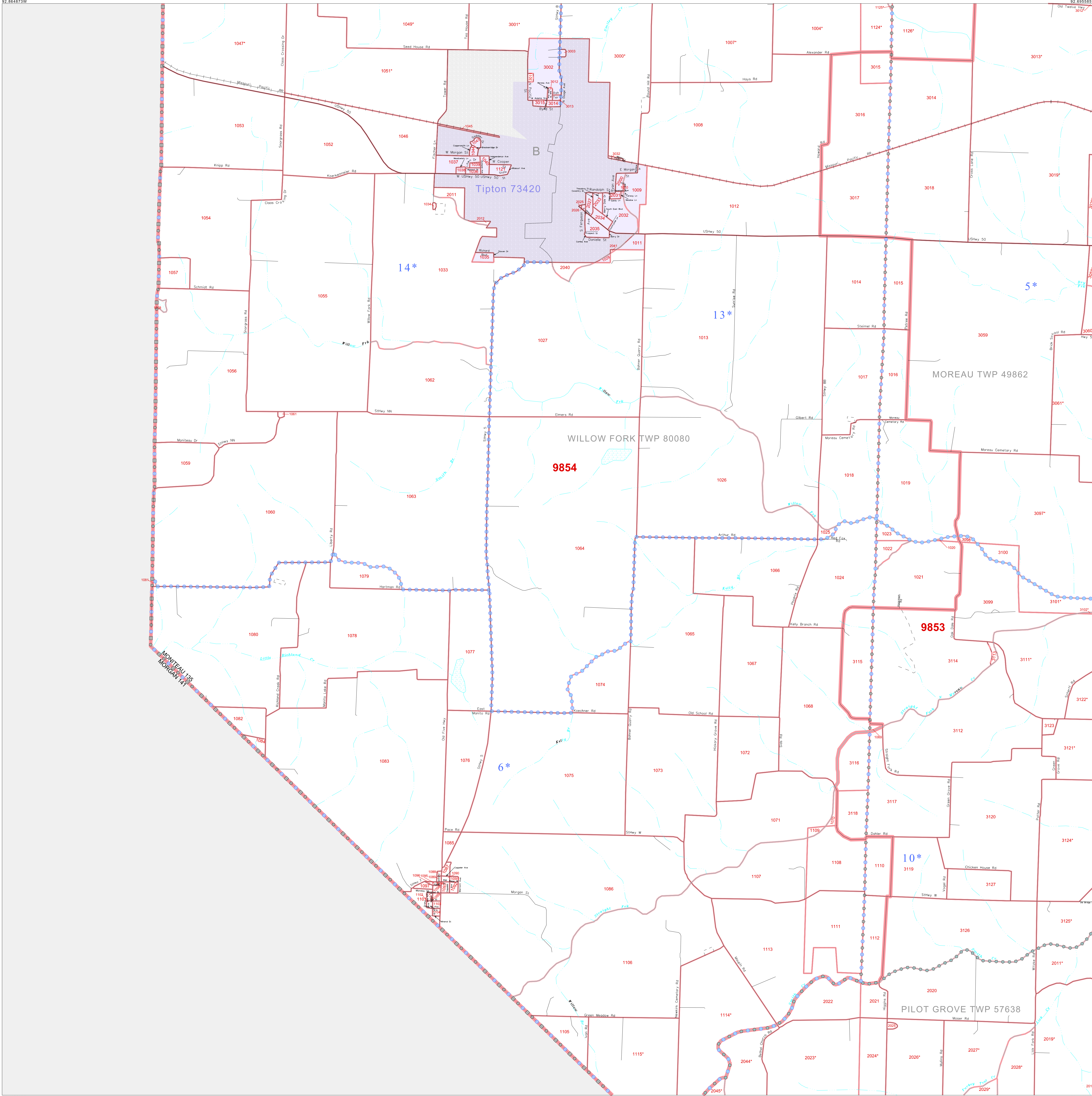
38 874915N
92 864873W

38 874915N
92 864873W

GEOGRAPHIC AREAS LEGEND

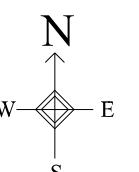
SYMBOL	NAME STYLE
☆☆☆☆☆	INTERNATIONAL
///////	STATE
□□□□□	COUNTY
□□□□□	MINOR CIVIL DIV. ¹
■ ■ ■ ■ ■	Incorporated Place ²
■ ■ ■ ■ ■	Census Designated Place ²
-----	Corporate Offset Boundary
●●●●●	Voting District ³
=====	Census Tract
=====	BLOCK ³
-----	Military

1 A "*" following a place name indicates that the place is coterminous with a MCD. A "-" indicates that the place is also a false MCD. In both cases, the MCD name is shown only when it differs from the place name.
 2 A "*" following a VTD code indicates an actual voting district. Its absence indicates that the VTD is a pseudo voting district or no information is available as to its status.
 3 A "*" following a block number indicates that the block number is repeated elsewhere in the block.

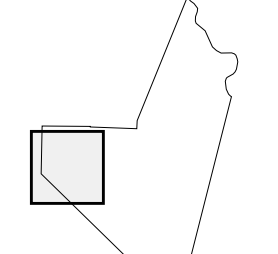


38 842203N
92 864873W

38 842203N
92 864873W



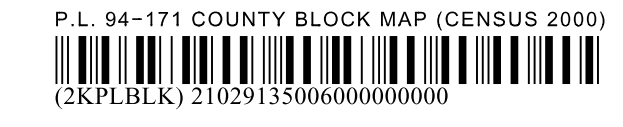
Sheet Location within County



Key to Adjacent Sheets

3	4
6	7
9	10

ST: Missouri (29)
 COU: Moniteau (135)
 SHEET 6 OF 11 PARENT SHEETS



All legal boundaries and names are as of January 1, 2000. The boundaries shown on this map are for Census Bureau statistical data collection and tabulation purposes only; their depiction and designation for statistical purposes does not constitute a determination of jurisdictional authority or rights of ownership or entitlement. U.S. DEPARTMENT OF COMMERCE Economics and Statistics Administration U.S. Census Bureau