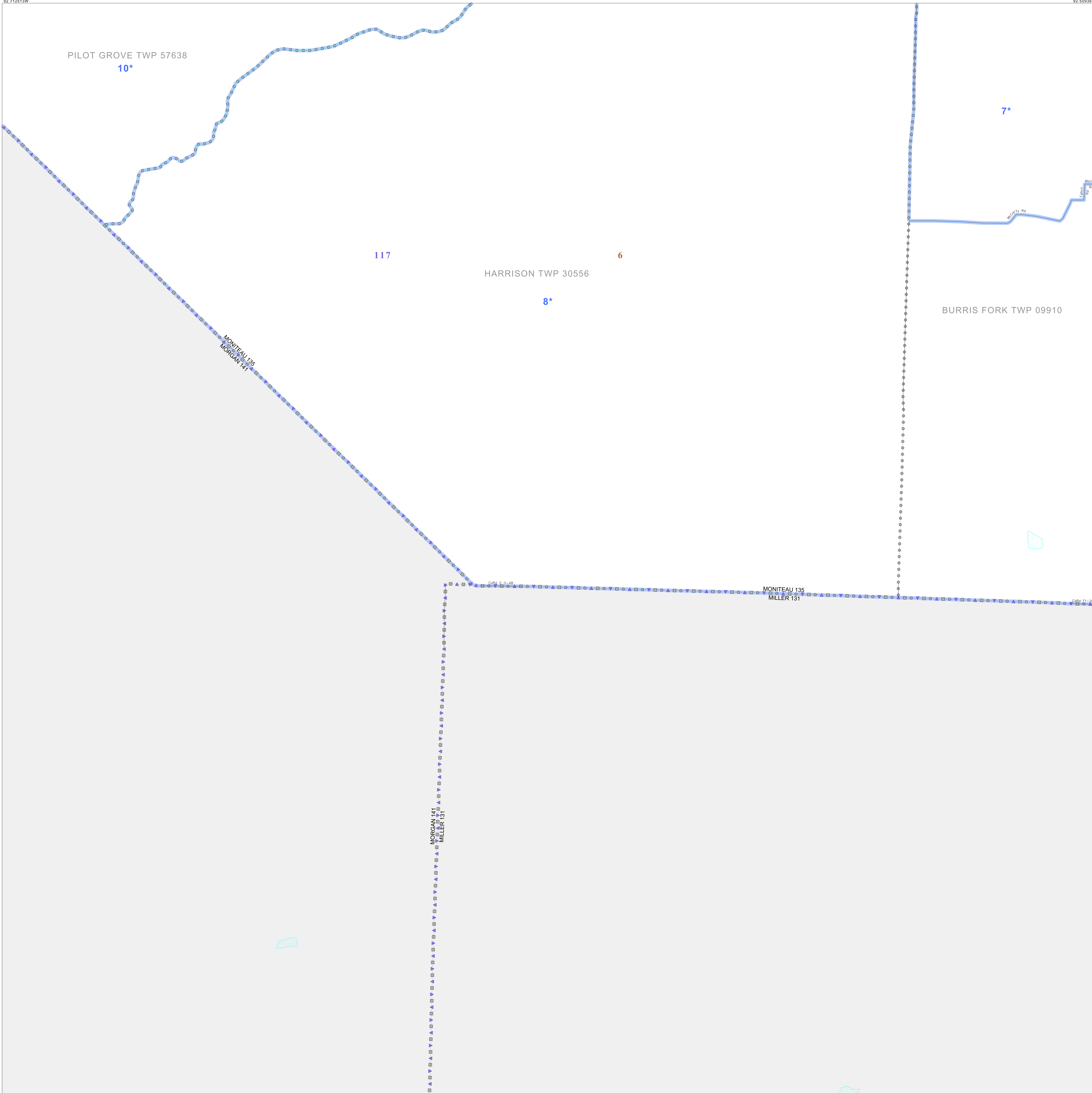


P.L. 94-171 VOTING DISTRICT/STATE LEGISLATIVE DISTRICT OUTLINE MAP (CENSUS 2000)

38 515659N  
92 712513W

38 515659N  
92 509368W



GEOGRAPHIC AREAS LEGEND

SYMBOL	NAME STYLE
*****	INTERNATIONAL
//////	STATE
#####	COUNTY
o-o-o-o-o	MINOR CIVIL DIV <sup>1</sup>
Yellow box	Incorporated Place <sup>1</sup>
Pink box	Census Designated Place <sup>2</sup>
Blue line	Voting District
Brown dots	SLD-Senate
Blue triangles	SLD-House

Abbreviation Reference: AIR - American Indian Reservation; SDAISA - State Designated American Indian Statistical Area

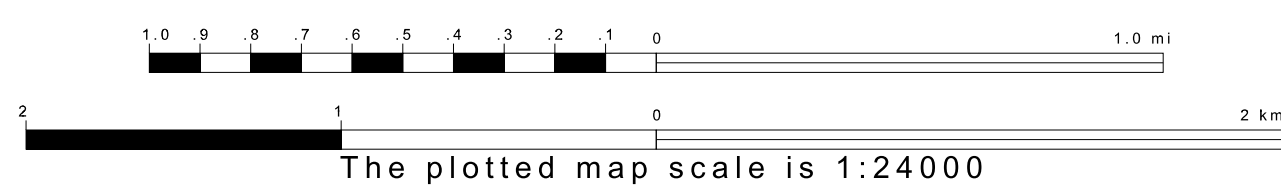
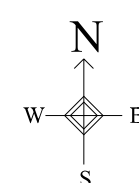
<sup>1</sup> A "\*" following a place name indicates that the place is coterminous with a MCD. A "-" indicates that the place is also a MCD. In both cases, the MCD name is shown only when it differs from the place name.  
<sup>2</sup> A "\*" following a VTD code indicates an actual voting district. Its absence indicates that the VTD is a pseudo voting district or no information is available as to its status.

Voting Districts

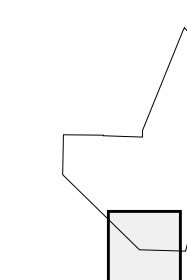
Code	Name
7*	Hamony Voting District
8*	HighPoint Voting District
10*	Latham Voting District

38 358405N  
92 712513W

38 358405N  
92 509368W



Sheet Location within County



Key to Adjacent Sheets

6	7	8
9	10	11

ST: Missouri (29)  
 COU: Moniteau (135)  
 SHEET 10 OF 11 PARENT SHEETS

