

P.L. 94-171 COUNTY BLOCK MAP (CENSUS 2000)

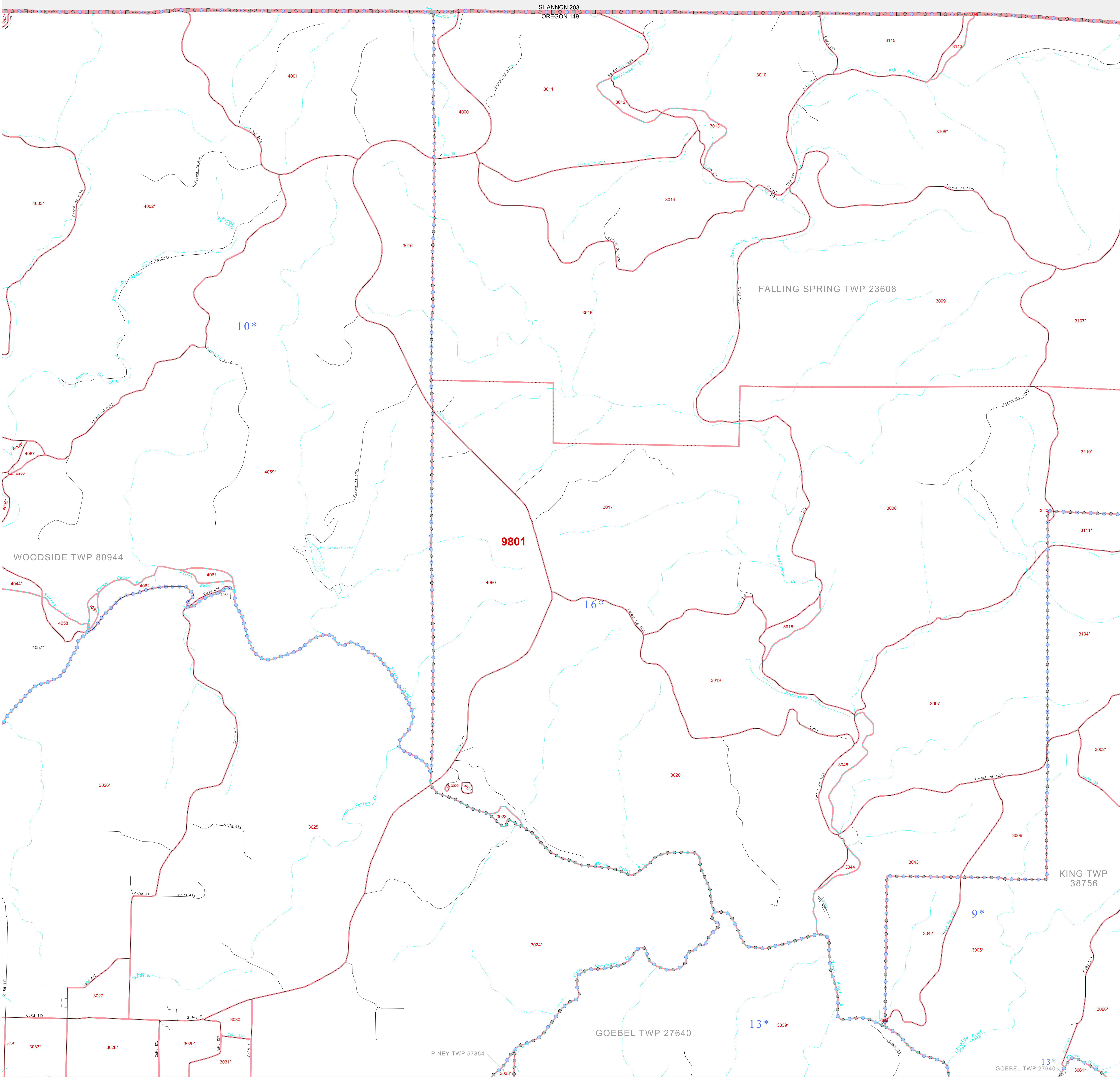
36 892033N
91 397129W

38 892033N
91 232287W

GEOGRAPHIC AREAS LEGEND

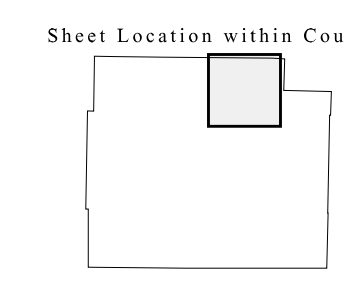
SYMBOL	NAME STYLE
*****	INTERNATIONAL
//////	STATE
■■■■■	COUNTY
⊙⊙⊙⊙	MINOR CIVIL DIV. ¹
Yellow/Pink	Incorporated Place ¹
Yellow/Pink	Census Designated Place ¹
.....	Corporate Offset Boundary
●●●●●	Voting District ²
Red Line	Census Tract
Red Line	BLOCK ³

1 A "*" following a place name indicates that the place is coterminous with a MCD. A "-" indicates that the place is also a false MCD. In both cases, the MCD name is shown only when it differs from the place name.
 2 A "*" following a VTD code indicates an actual voting district. Its absence indicates that the VTD is a pseudo voting district or no information is available as to its status.
 3 A "*" following a block number indicates that the block number is repeated elsewhere in the block.



36 759276N
91 397129W

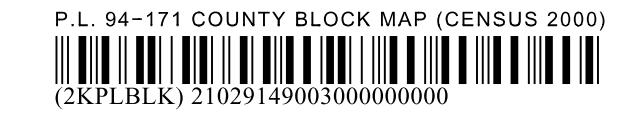
38 759276N
91 232287W



Key to Adjacent Sheets

2	3	4
6	7	8

ST: Missouri (29)
 COU: Oregon (149)
 SHEET 3 OF 12 PARENT SHEETS



All legal boundaries and names are as of January 1, 2000. The boundaries shown on this map are for Census Bureau statistical data collection and tabulation purposes only; their depiction and designation for statistical purposes does not constitute a determination of jurisdictional authority or rights of ownership or entitlement. U.S. DEPARTMENT OF COMMERCE Economics and Statistics Administration U.S. Census Bureau