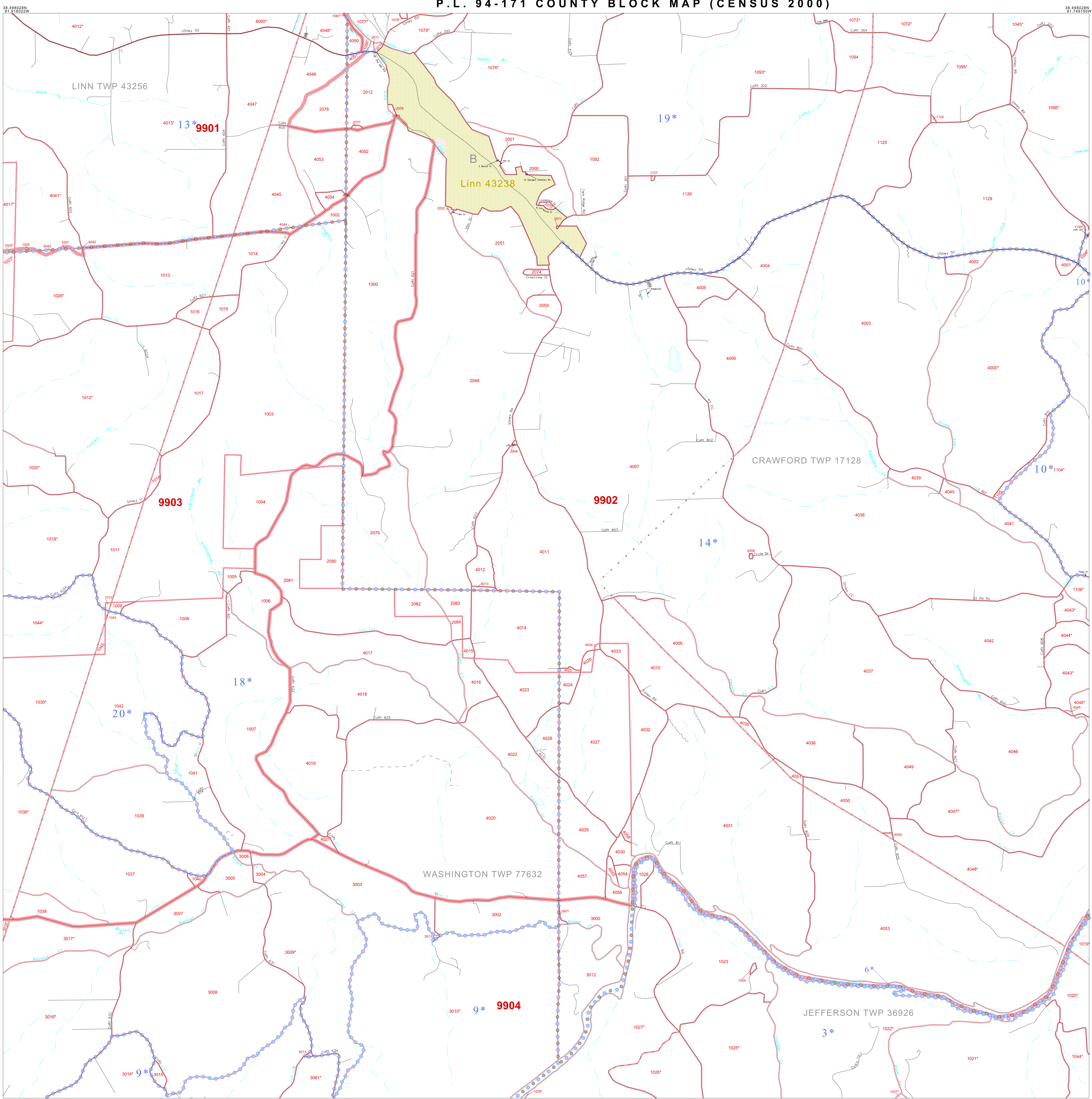


P. L. 94-171 COUNTY BLOCK MAP (CENSUS 2000)

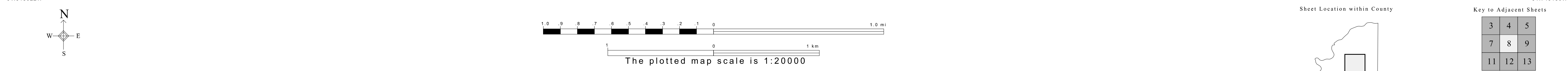


GEOGRAPHIC AREAS LEGEND

SYMBOL	NAME STYLE
*****	INTERNATIONAL
//////	STATE
□□□□□	COUNTY
□□□□□	MINOR CIVIL DIV.
Yellow box	Incorporated Place ¹
Light Green box	Census Designated Place ²
Red dashed line	Corporate Offset Boundary
Blue dashed line	Voting District ³
Red solid line	Census Tract
Red dashed line	BLOCK ³

Military Inset Out Area

1 A "*" following a place name indicates that the place is coterminous with a MCD. A "-" indicates that the place is also a false MCD. In both cases, the MCD name is shown only when it differs from the place name.
 2 A "*" following a VTD code indicates an actual voting district. Its absence indicates that the VTD is a pseudo voting district or no information is available as to its status.
 3 A "-" following a block number indicates that the block number is repeated elsewhere in the block.



Key to Adjacent Sheets

3	4	5
7	8	9
11	12	13

ST: Missouri (29)
 COU: Osage (151)
 SHEET 8 OF 13 PARENT SHEETS

All legal boundaries and names are as of January 1, 2000. The boundaries shown on this map are for Census Bureau statistical data collection and tabulation purposes only; their depiction and designation for statistical purposes does not constitute a determination of jurisdictional authority or rights of ownership or entitlement. U.S. DEPARTMENT OF COMMERCE Economics and Statistics Administration U.S. Census Bureau

