

P. L. 94-171 COUNTY BLOCK MAP (CENSUS 2000)

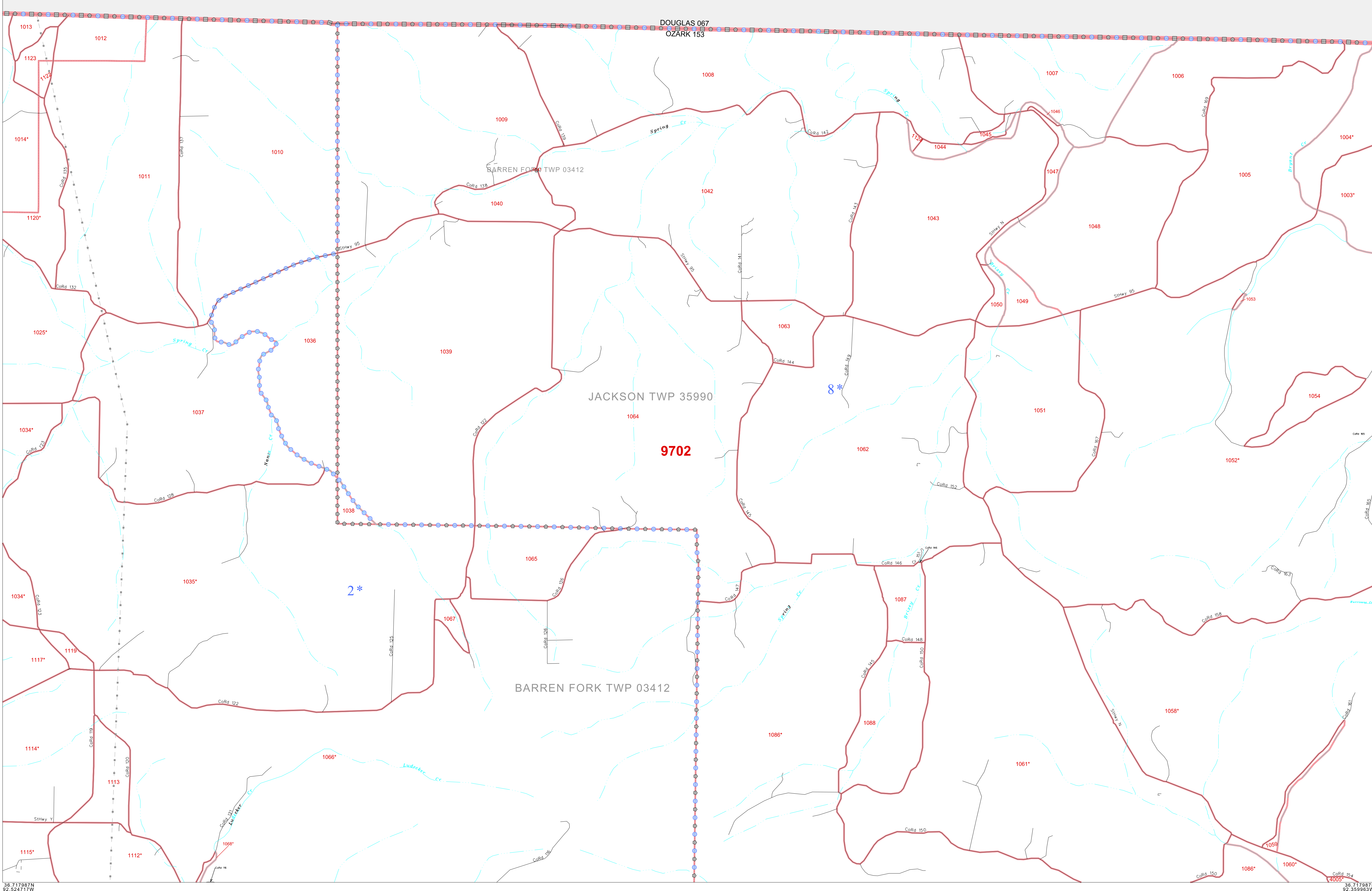
36 850746N  
92 524717W

38 850746N  
92 359963W

GEOGRAPHIC AREAS LEGEND

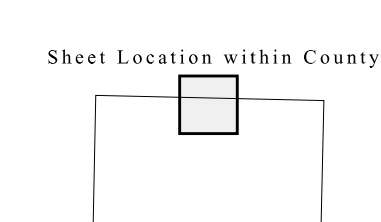
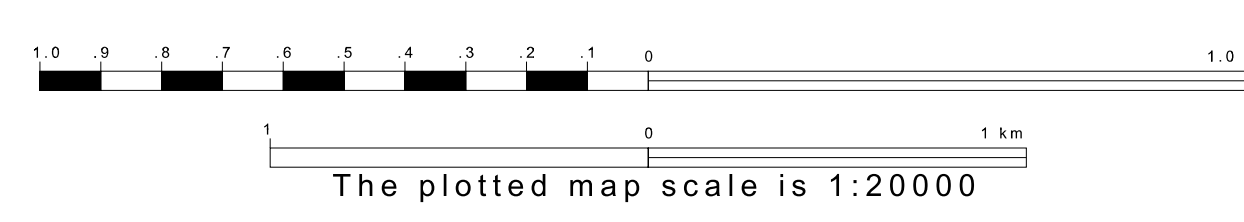
SYMBOL	NAME STYLE
☆☆☆☆	INTERNATIONAL
//////	STATE
■■■■■	COUNTY
●●●●●	MINOR CIVIL DIV <sup>1</sup>
<span style="background-color: yellow; border: 1px solid black; padding: 2px;"> </span>	Incorporated Place <sup>1</sup>
<span style="background-color: yellow; border: 1px solid black; padding: 2px;"> </span>	Census Designated Place <sup>1</sup>
.....	Corporate Offset Boundary
●●●●●	Voting District <sup>2</sup>
■■■■■	Census Tract
■■■■■	BLOCK <sup>3</sup>
<span style="border: 1px dashed black; padding: 2px;"> </span>	Military
<span style="border: 1px solid black; padding: 2px;"> </span>	Inset
<span style="border: 1px solid black; padding: 2px;"> </span>	Out Area

1 A "\*" following a place name indicates that the place is coterminous with a MCD. "A\*" indicates that the place is also a false MCD. In both cases, the MCD name is shown only when it differs from the place name.  
 2 A "\*" following a VTD code indicates an actual voting district. Its absence indicates that the VTD is a pseudo voting district or no information is available as to its status.  
 3 A "\*" following a block number indicates that the block number is repeated elsewhere in the block.



36 717987N  
92 524717W

38 717987N  
92 359963W



Key to Adjacent Sheets

2	3	4
7	8	9

ST: Missouri (29)  
 COU: Ozark (153)  
 SHEET 3 OF 15 PARENT SHEETS



All legal boundaries and names are as of January 1, 2000.  
 The boundaries shown on this map are for Census Bureau statistical data collection and tabulation purposes only; their depiction and designation for statistical purposes does not constitute a determination of jurisdictional authority or rights of ownership or entitlement.  
 U.S. DEPARTMENT OF COMMERCE Economics and Statistics Administration U.S. Census Bureau