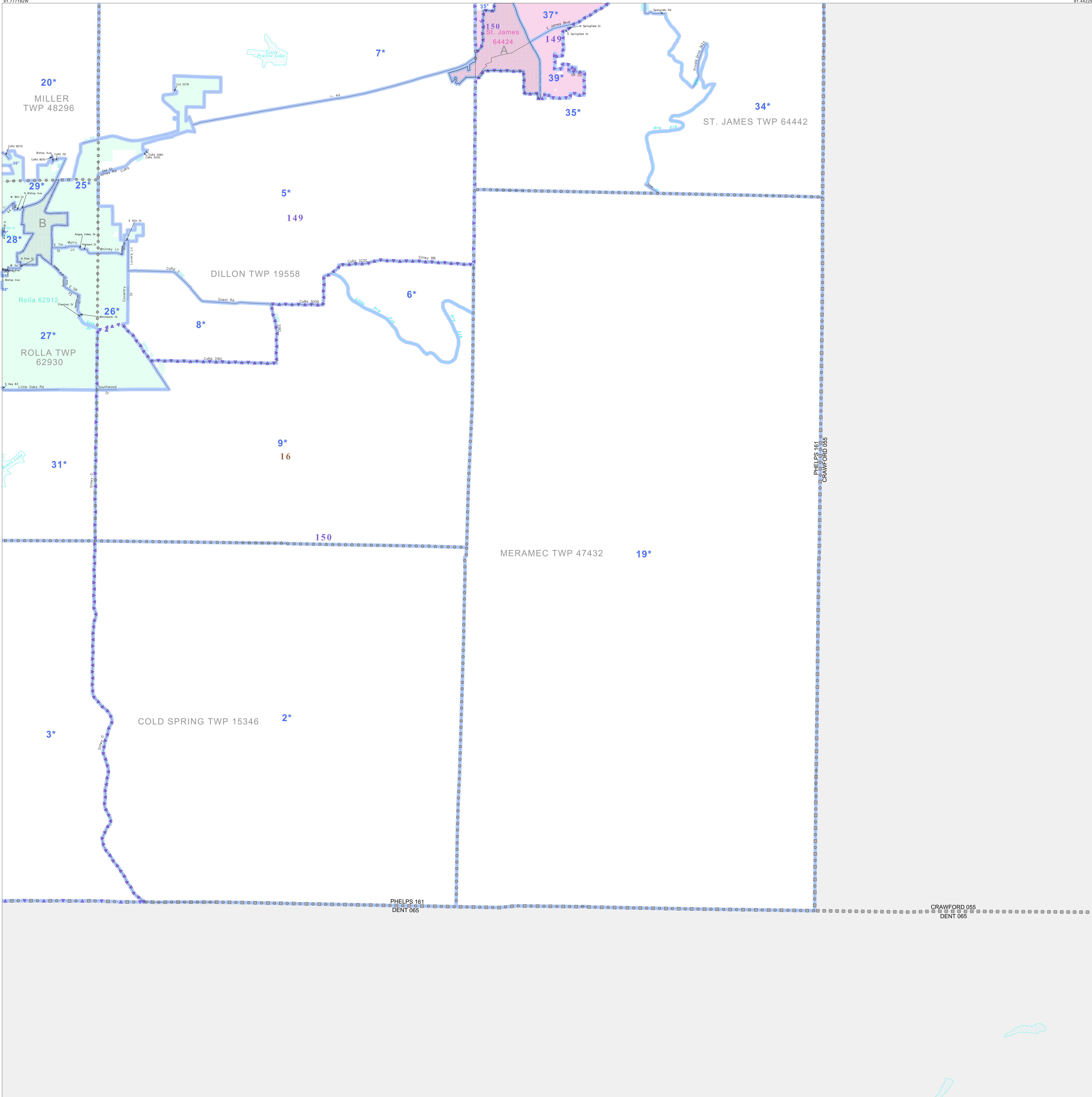


P.L. 94-171 VOTING DISTRICT/STATE LEGISLATIVE DISTRICT OUTLINE MAP (CENSUS 2000)

38 008622N
91.777182W

38 008622N
91.442296W



GEOGRAPHIC AREAS LEGEND

SYMBOL	NAME STYLE
*****	INTERNATIONAL
//////	STATE
□□□□□□	COUNTY
○	MINOR CIVIL DIV ¹
■	Incorporated Place ¹
■	Census Designated Place ²
—	Voting District
●●●●●	SLD-Senate
▲▲▲▲▲	SLD-House
⋮	Minority
□	Inset
□	Out Area

Abbreviation Reference: AIR - American Indian Reservation; SDAISA - State Designated American Indian Statistical Area

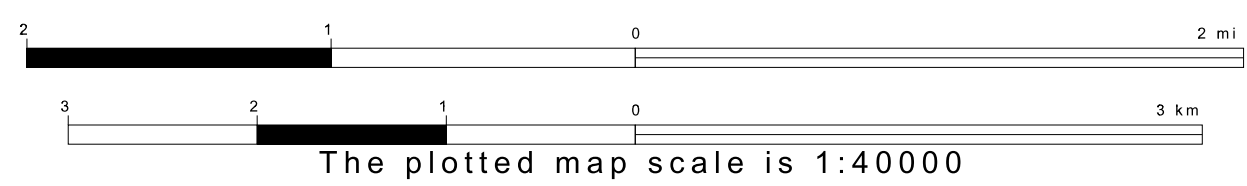
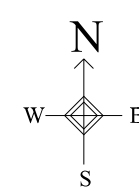
¹ A * following a place name indicates that the place is coterminous with a MCD. A ** indicates that the place is also a false MCD. In both cases, the MCD name is shown only when it differs from the place name.
² A * following a VTD code indicates an actual voting district. Its absence indicates that the VTD is a pseudo voting district or no information is available as to its status.

Voting Districts

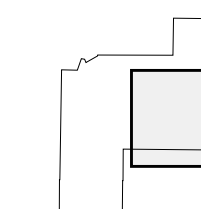
Code	Name
1*	ColdSpringEast Voting District
2*	ColdSpringWest Voting District
3*	DillonCentral150 Voting District
4*	DillonCentral150 Voting District
5*	DillonNorth Voting District
6*	DillonSouth148 Voting District
7*	DillonSouth150 Voting District
8*	DillonSouth150 Voting District
9*	MeramecNorth&South Voting District
10*	MillerEast Voting District
11*	RollaNo 1 Voting District
12*	RollaNo 2 Voting District
13*	RollaNo 3 Voting District
14*	RollaNo 4 Voting District
15*	RollaNo 5 Voting District
16*	RollaNo 5 Voting District
17*	RollaNo 5 Voting District
18*	RollaNo 5 Voting District
19*	St James0 S.E. Voting District
20*	St James0 S.W. Voting District
21*	St James0 S.W. Voting District
22*	St James0 S.W. Voting District

37 743461N
91.777182W

37 743461N
91.442296W



Sheet Location within County



Key to Adjacent Sheets

1	2
3	4
5	

ST: Missouri (29)
 COU: Phelps (161)
 SHEET 4 OF 5 PARENT SHEETS

