

P.L. 94-171 VOTING DISTRICT/STATE LEGISLATIVE DISTRICT OUTLINE MAP (CENSUS 2000)

39 544591N  
92 429340W

39 544591N  
92 279631W

### GEOGRAPHIC AREAS LEGEND

SYMBOL	NAME STYLE
*****	INTERNATIONAL
//////	STATE
□□□□□□	COUNTY
○ ○ ○ ○ ○	MINOR CIVIL DIV. <sup>1</sup>
■ ■ ■ ■ ■	Incorporated Place <sup>1</sup>
■ ■ ■ ■ ■	Census Designated Place <sup>1</sup>
—	Voting District <sup>2</sup>
● ● ● ● ●	SLD-Senate
▲ ▲ ▲ ▲ ▲	SLD-House

Military  Inset  Out Area

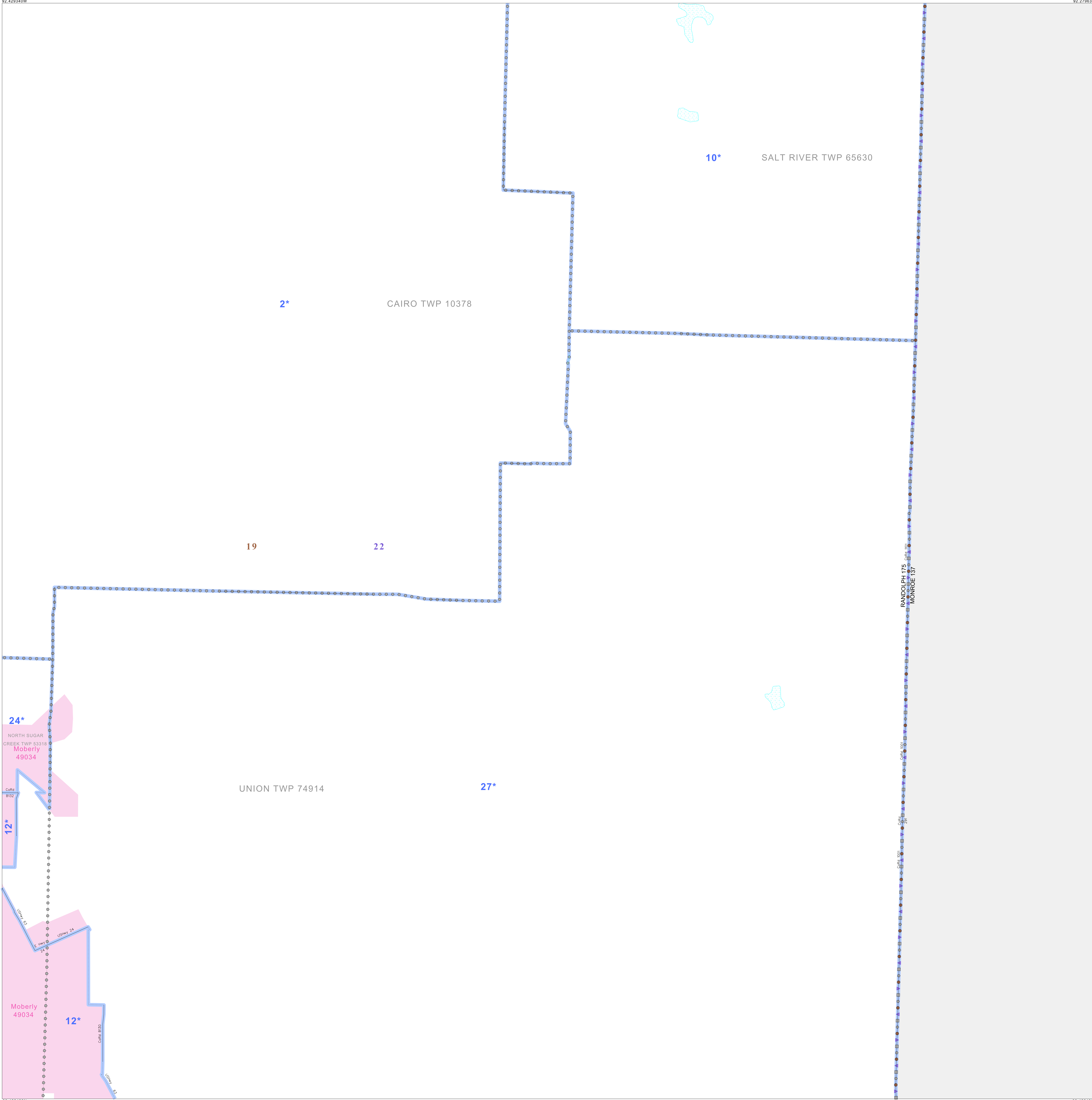
Abbreviation Reference: AIR - American Indian Reservation; SDAISA - State Designated American Indian Statistical Area

<sup>1</sup> A "\*" following a place name indicates that the place is coterminous with a MCD. A "-" indicates that the place is also a CDP. In both cases, the MCD name is shown only when it differs from the place name.

<sup>2</sup> A "\*" following a VTD code indicates an actual voting district. Its absence indicates that the VTD is a pseudo voting district or no information is available as to its status.

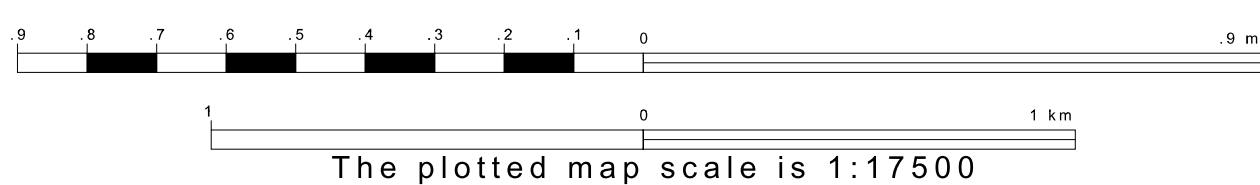
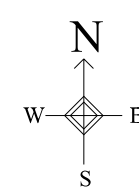
### Voting Districts

Code	Name
2*	Cairo Voting District
10*	Levicki/Will Voting District
11*	Moberly/West/Princeton
24*	SugarCreekNorth Voting District
27*	Union Voting District

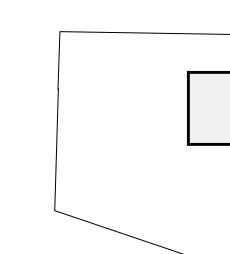


39 428443N  
92 429340W

39 428443N  
92 279631W



Sheet Location within County



Key to Adjacent Sheets

2	3
5	6
8	9

ST: Missouri (29)  
COU: Randolph (175)  
SHEET 6 OF 12 PARENT SHEETS

