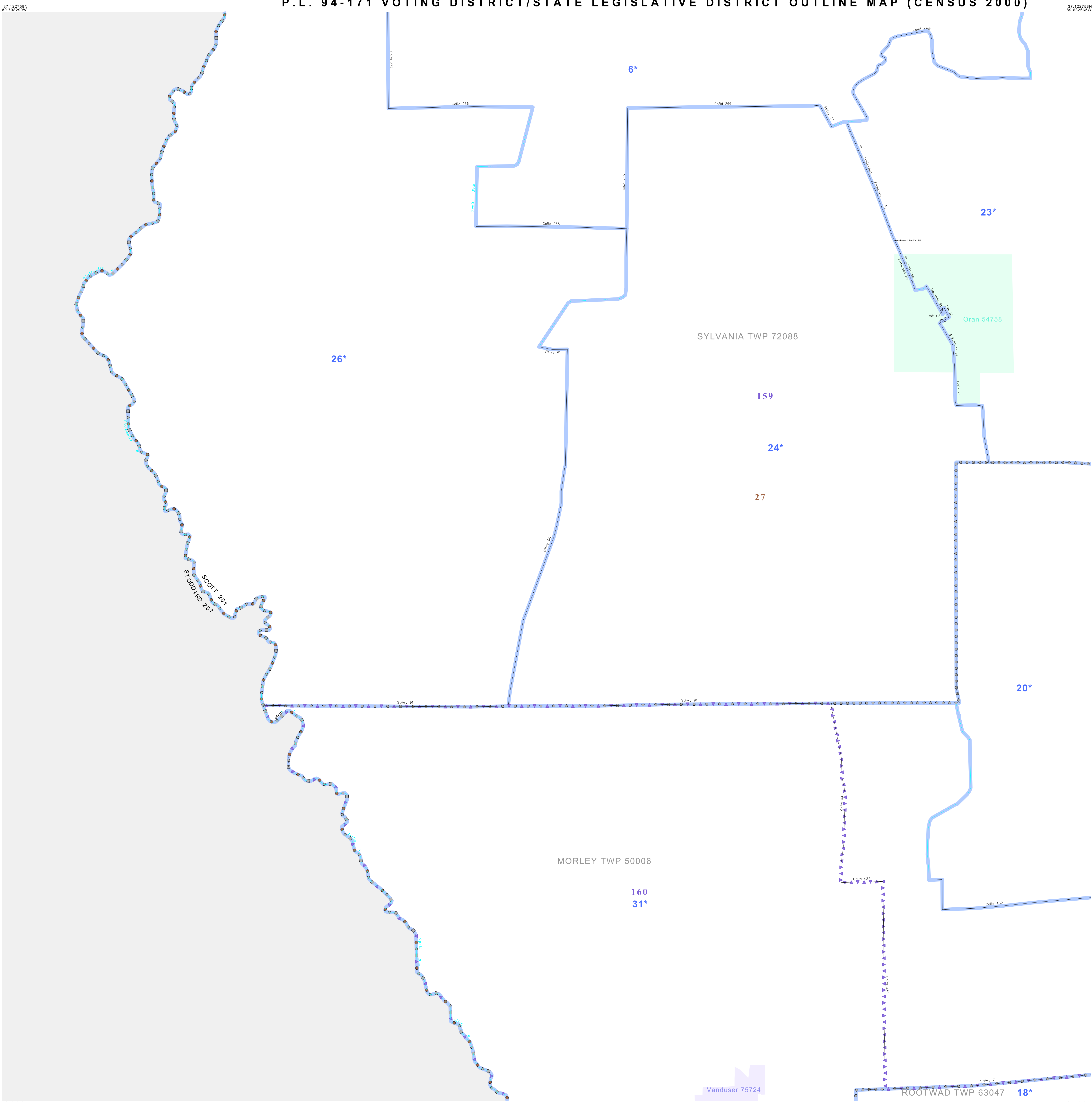


P.L. 94-171 VOTING DISTRICT/STATE LEGISLATIVE DISTRICT OUTLINE MAP (CENSUS 2000)

37 122758N
89 79290W

37 122758N
89 832865W



GEOGRAPHIC AREAS LEGEND

SYMBOL	NAME STYLE
*****	INTERNATIONAL
////	STATE
□□□□	COUNTY
○	MINOR CIVIL DIV ¹
■	Incorporated Place ¹
■	Census Designated Place ²
—	Voting District
●●●●	SLD-Senate
▲▲▲▲	SLD-House
□	Minority
□	Inset
□	Out Area

Abbreviation Reference: AIR - American Indian Reservation; SDAISA - State Designated American Indian Statistical Area

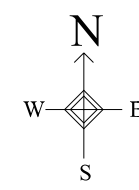
¹ A "*" following a place name indicates that the place is coterminous with a MCD. A "-" indicates that the place is also a false MCD. In both cases, the MCD name is shown only when it differs from the place name.
² A "*" following a VTD code indicates an actual voting district. Its absence indicates that the VTD is a pseudo voting district or no information is available as to its status.

Voting Districts

Code	Name
6*	Bleda Voting District
18*	McMillin Voting District
20*	Morley Voting District
23*	Oran Voting District
24*	Oran Voting District
26*	Oran Voting District
27	Oran Voting District
31*	Vanduser Voting District

38 990009N
89 79290W

38 990009N
89 832865W



The plotted map scale is 1:20000

Sheet Location within County



Key to Adjacent Sheets

1	2
4	5
7	8

ST: Missouri (29)
 COU: Scott (201)
 SHEET 4 OF 9 PARENT SHEETS

