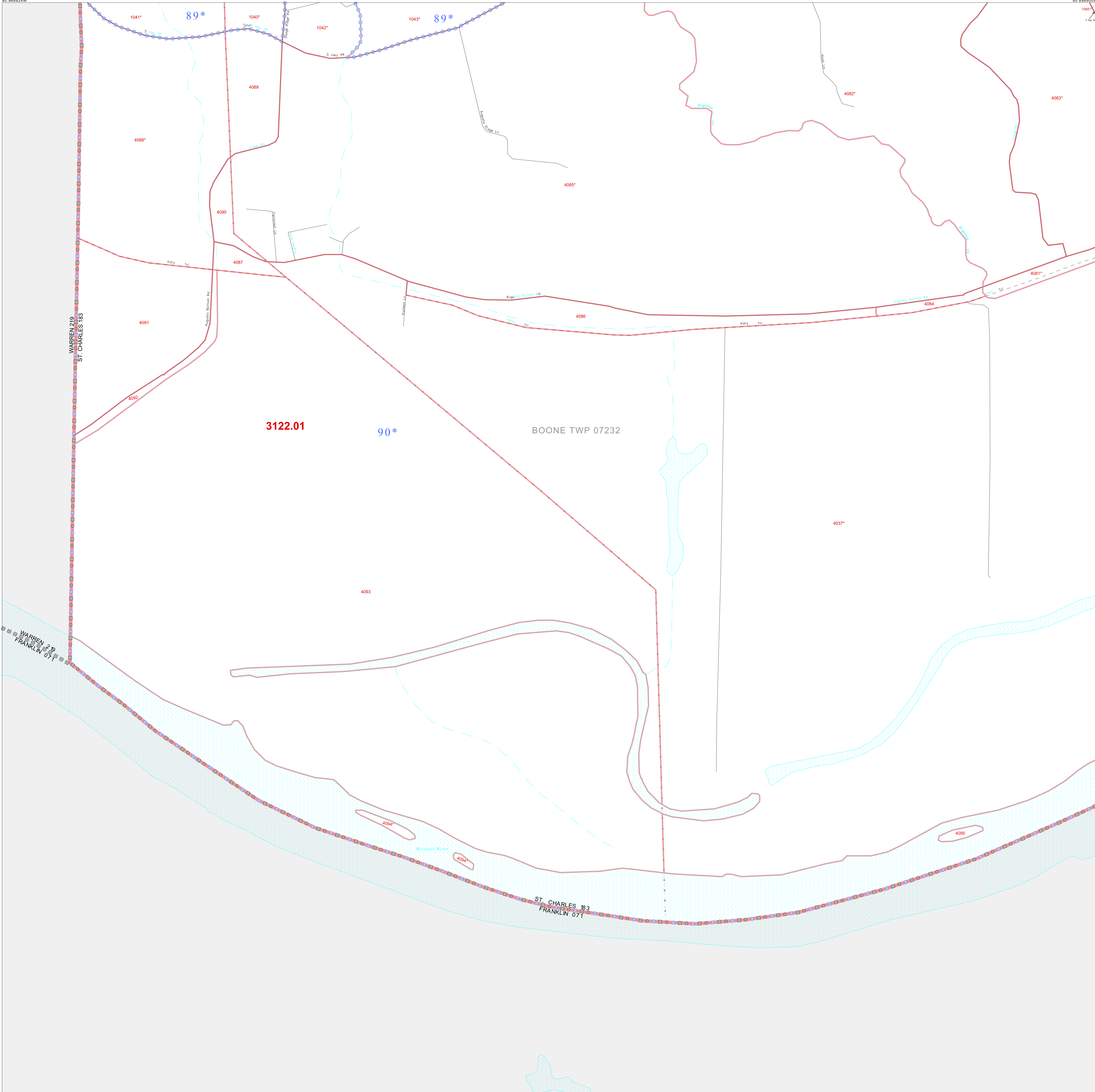


P. L. 94-171 COUNTY BLOCK MAP (CENSUS 2000)

38 581743N
90.898924W

38 581743N
90.898924W



GEOGRAPHIC AREAS LEGEND

| SYMBOL | NAME STYLE |
|---------|--------------------------------------|
| ☆☆☆☆ | INTERNATIONAL |
| //// | STATE |
| □□□□ | COUNTY |
| □□□□ | MINOR CIVIL DIV ¹ |
| ■ ■ ■ ■ | Incorporated Place ¹ |
| ■ ■ ■ ■ | Census Designated Place ² |
| ----- | Corporate Offset Boundary |
| | Voting District ³ |
| ----- | Census Tract |
| ----- | BLOCK ³ |

1 A "*" following a place name indicates that the place is coterminous with a MCD. A "-" indicates that the place is also a false MCD. In both cases, the MCD name is shown only when it differs from the place name.

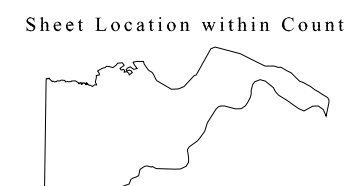
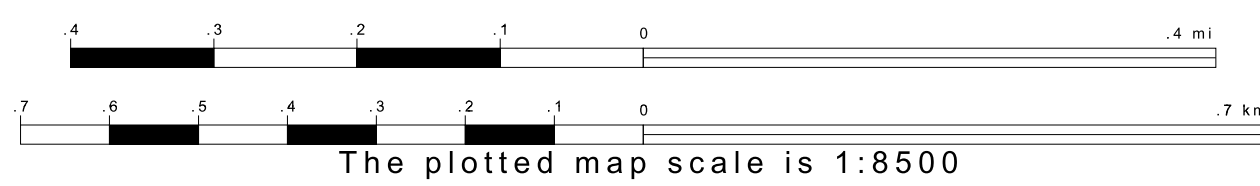
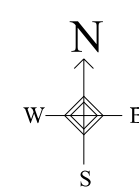
2 A "*" following a VTD code indicates an actual voting district. Its absence indicates that the VTD is a pseudo voting district or no information is available as to its status.

3 A "*" following a block number indicates that the block number is repeated elsewhere in the block.

Military Inset Out Area

38 523342N
90.968924W

38 523342N
90.968924W



Key to Adjacent Sheets

| | |
|----|----|
| 54 | 55 |
| 58 | 59 |

ST: Missouri (29)
COU: St. Charles (183)
SHEET 58 OF 60 PARENT SHEETS

