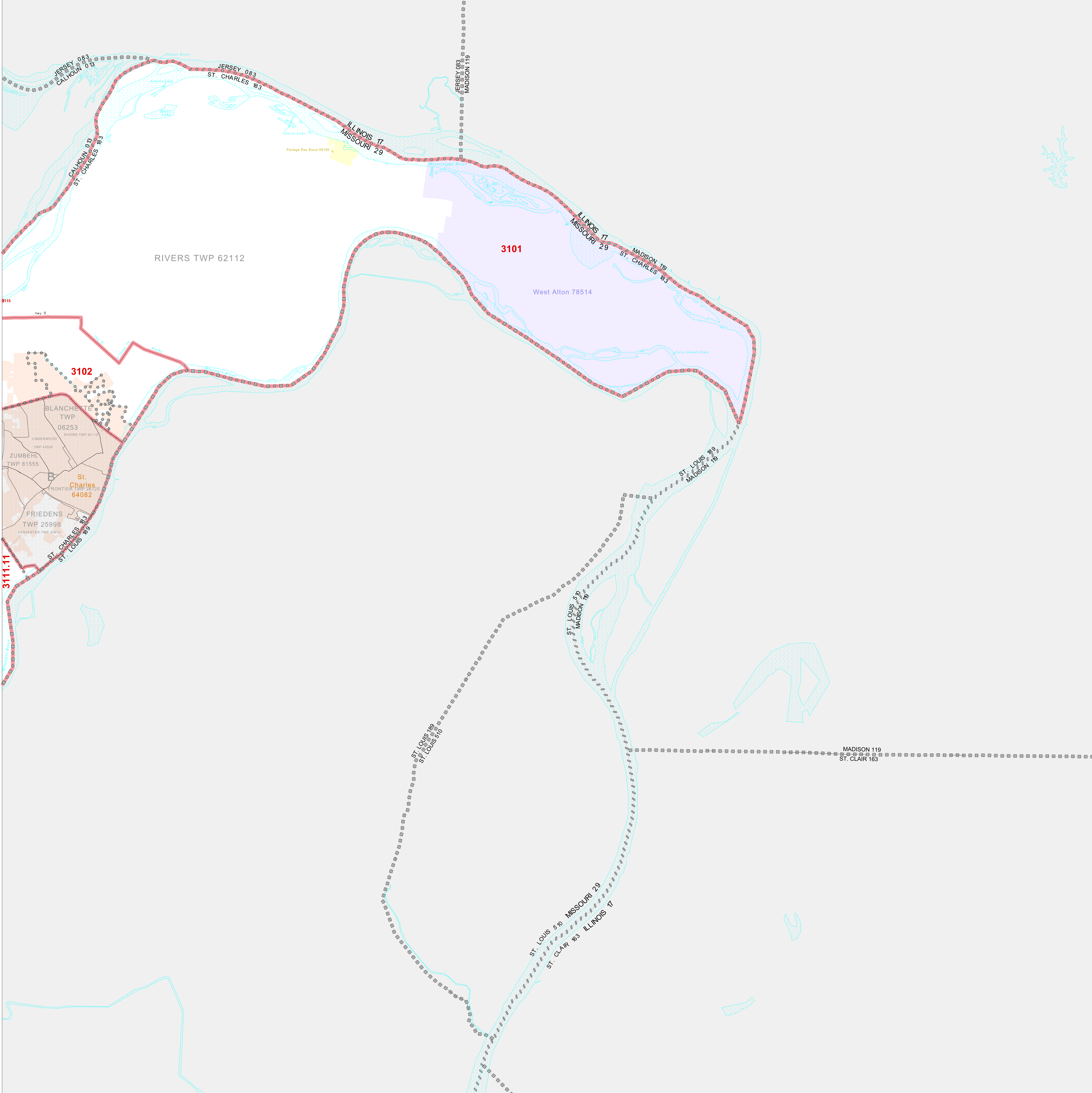


CENSUS TRACT OUTLINE MAP (CENSUS 2000)

38 994405N  
90.536744W

38 994405N  
90.536744W



**ABBREVIATED LEGEND**

SYMBOL	NAME STYLE
*****	INTERNATIONAL
*****	AIR (FEDERAL)
*****	Trust Land
*****	OTSA / TDSA
*****	TRIBAL SUBDIVISION
*****	AIR (State)
*****	SDA/SA
*****	STATE
*****	COUNTY
*****	MINOR CIVIL DIV' Consolidated City
*****	Incorporated Place'
*****	Census Designated Place'
*****	Census Tract

Abbreviation Reference: AIR = American Indian Reservation; Trust Land = OTF-Reservation Trust Land; OTSA = Oklahoma Tribal Statistical Area; TDSA = Tribal Designated Statistical Area; Tribal Subdivision = American Indian Tribal Subdivision; SDA/SA = State Designated American Indian Statistical Area

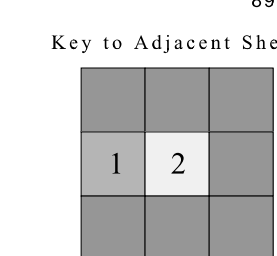
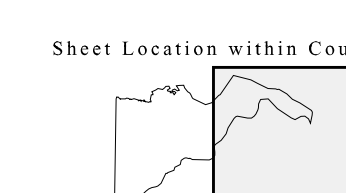
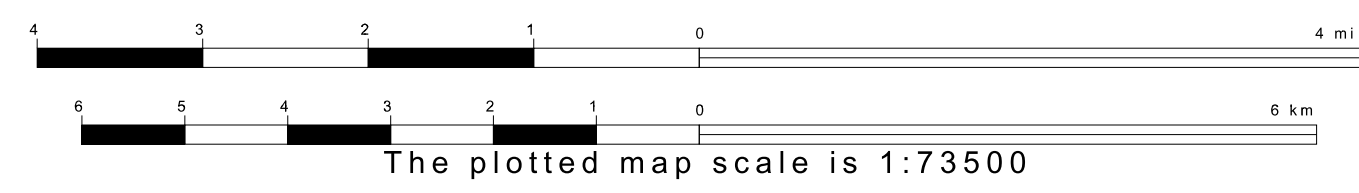
1. A "-" following a place name indicates that the place is coterminous with a MCD. A "-" indicates that the place is also a false MCD. In both cases, the MCD name is shown only when it differs from the place name.

FEATURES	FEATURES
All Roads	Stream/Channel
Railroad	Intermittent Stream
Proposed Line	River/Lake
Physical Feature	Glacier
Naval Boundary	

Military Inset Out Area

38 507094N  
90.536744W

38 507094N  
90.536744W



ST: Missouri (29)  
COU: St. Charles (183)  
SHEET 2 OF 2 PARENT SHEETS

