

P.L. 94-171 VOTING DISTRICT/STATE LEGISLATIVE DISTRICT OUTLINE MAP (CENSUS 2000)

37 938404N
90 860532W

37 775127N
90 479647W

GEOGRAPHIC AREAS LEGEND

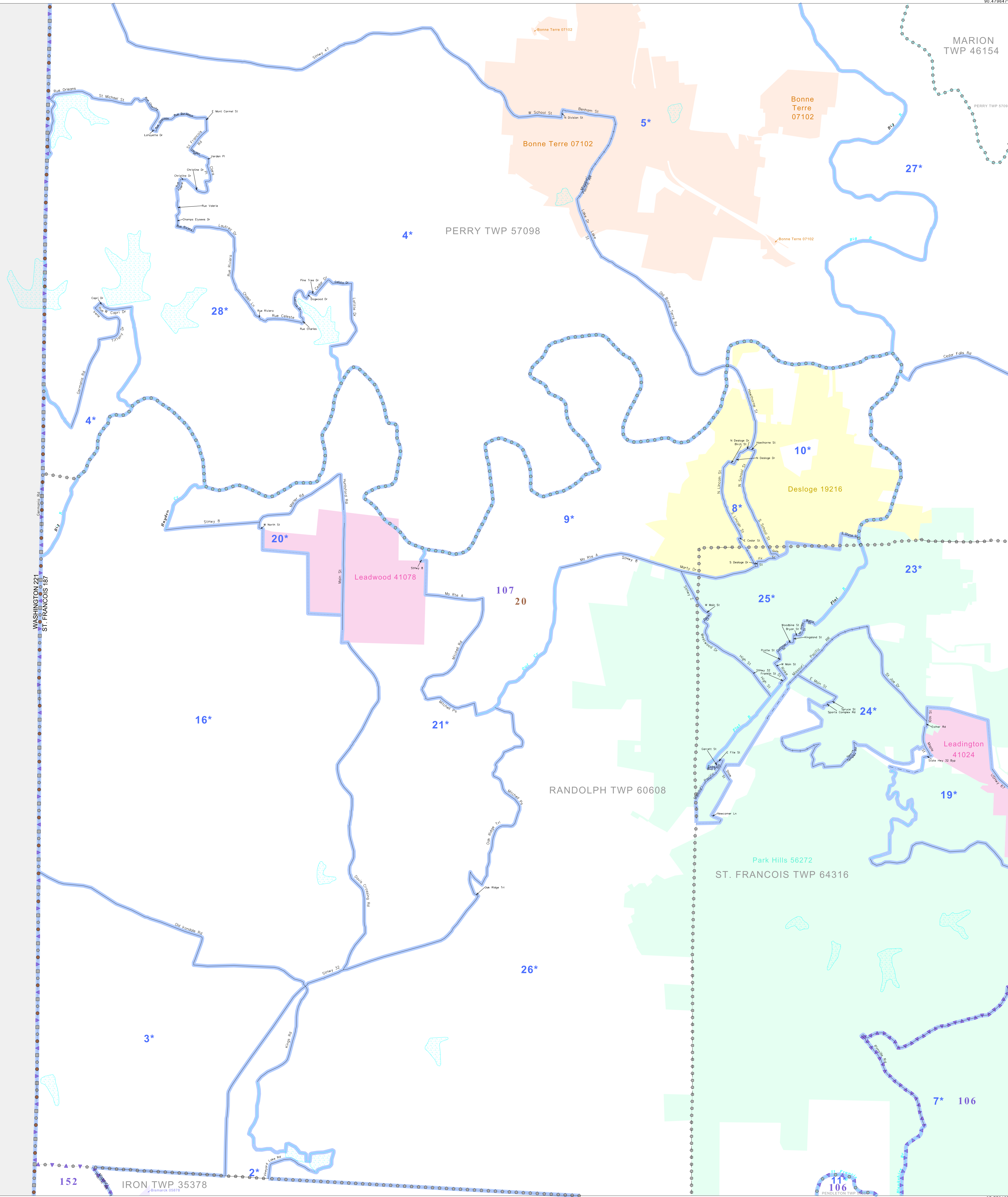
SYMBOL	NAME STYLE
*****	INTERNATIONAL
//////	STATE
□□□□	COUNTY
□□□□	MINOR CIVIL DIV. ¹
■ ■ ■ ■	Incorporated Place ¹
■ ■ ■ ■	Census Designated Place ²
—	Voting District
●●●●●	SLD-Senate
▲▲▲▲▲	SLD-House
.....	Minority
Inset	Inset
Out Area	Out Area

Abbreviation Reference: AIR - American Indian Reservation; SDAISA - State Designated American Indian Statistical Area

¹ A "*" following a place name indicates that the place is consecutive with a MCD. A "-" indicates that the place is also a CSD. In both cases, the MCD name is shown only when it differs from the place name.
² A "*" following a VTD code indicates an actual voting district. Its absence indicates that the VTD is a pseudo voting district or no information is available as to its status.

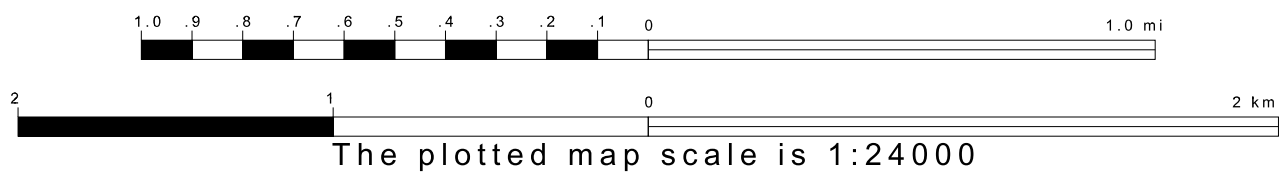
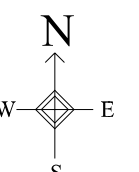
Voting Districts

Code	Name
1*	BismackNo.1 Voting District
2*	BismackNo.2 Voting District
3*	BismackNo.3 Voting District
4*	BismackNo.4 Voting District
5*	BismackNo.5 Voting District
6*	BismackNo.6 Voting District
7*	BismackNo.7 Voting District
8*	BismackNo.8 Voting District
9*	BismackNo.9 Voting District
10*	BismackNo.10 Voting District
11*	BismackNo.11 Voting District
12*	BismackNo.12 Voting District
13*	BismackNo.13 Voting District
14*	BismackNo.14 Voting District
15*	BismackNo.15 Voting District
16*	BismackNo.16 Voting District
17*	BismackNo.17 Voting District
18*	BismackNo.18 Voting District
19*	BismackNo.19 Voting District
20*	BismackNo.20 Voting District
21*	BismackNo.21 Voting District
22*	BismackNo.22 Voting District
23*	BismackNo.23 Voting District
24*	BismackNo.24 Voting District
25*	BismackNo.25 Voting District
26*	BismackNo.26 Voting District
27*	BismackNo.27 Voting District
28*	BismackNo.28 Voting District

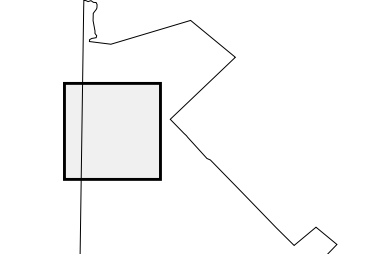


37 775127N
90 860532W

37 775127N
90 479647W



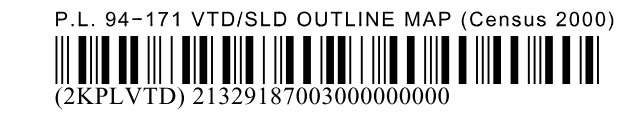
Sheet Location within County



Key to Adjacent Sheets

1	2
3	4
5	6

ST: Missouri (29)
 COU: St. Francois (187)
 SHEET 3 OF 7 PARENT SHEETS



All legal boundaries and names are as of January 1, 2000. The boundaries shown on this map are for Census Bureau statistical data collection and tabulation purposes only; their depiction and designation for statistical purposes does not constitute a determination of jurisdictional authority or rights of ownership or entitlement. U.S. DEPARTMENT OF COMMERCE Economics and Statistics Administration U.S. Census Bureau