

### GEOGRAPHIC AREAS LEGEND

SYMBOL	NAME STYLE
*****	INTERNATIONAL
//////	STATE
□□□□□□	COUNTY
○●○●○●	MINOR CIVIL DIV. <sup>1</sup>
■	Incorporated Place <sup>1</sup>
■	Census Designated Place <sup>1</sup>
—	Voting District <sup>2</sup>
●●●●●●	SLD-Senate
▲▲▲▲▲▲	SLD-House
□	Minority
□	Inset
□	Out Area

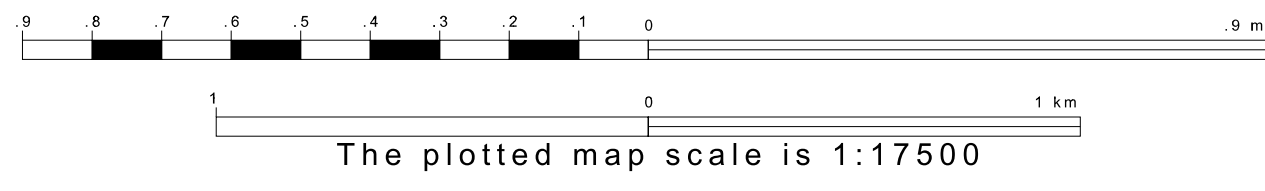
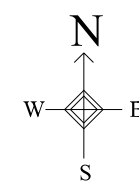
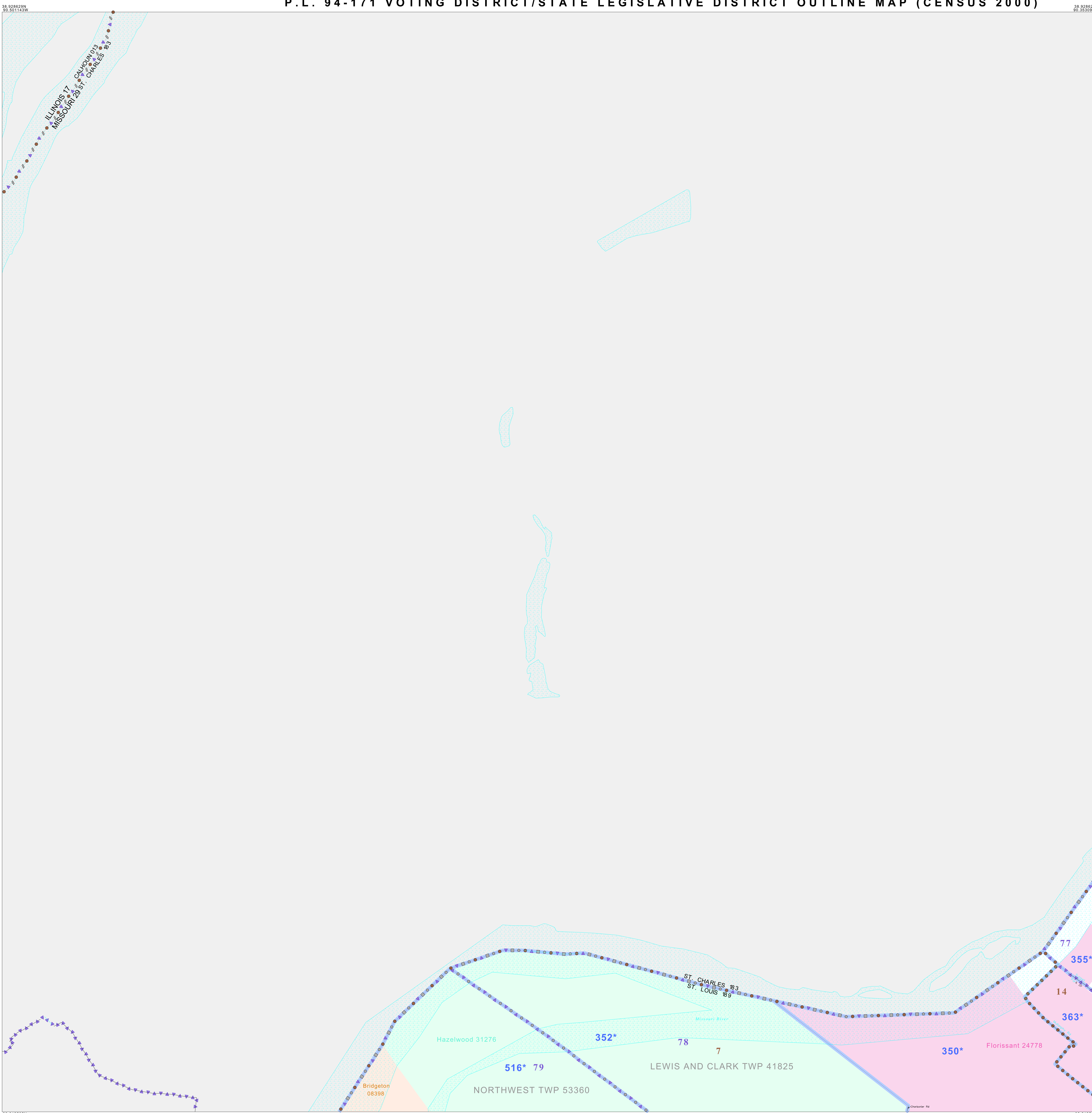
Abbreviation Reference: AIR - American Indian Reservation; SDAISA - State Designated American Indian Statistical Area

<sup>1</sup> A "\*" following a place name indicates that the place is coterminous with a MCD. A "-" indicates that the place is also a MCD. In both cases, the MCD name is shown only when it differs from the place name.

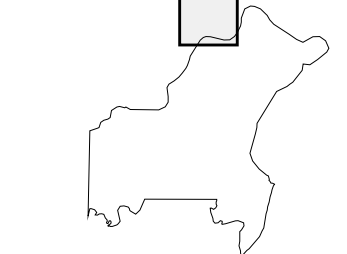
<sup>2</sup> A "\*" following a VTD code indicates an actual voting district. Its absence indicates that the VTD is a pseudo voting district or no information is available as to its status.

### Voting Districts

Code	Name
350*	LewisClark14628642 Voting District
351*	LewisClark17625670635639624 Voting District
352*	LewisClark1621 Voting District
353*	LewisClark8672 Voting District
354*	Northwest14743064450 Voting District



Sheet Location within County



Key to Adjacent Sheets

1	2
4	5
6	

ST: Missouri (29)  
COU: St. Louis (189)  
SHEET 1 OF 18 PARENT SHEETS

