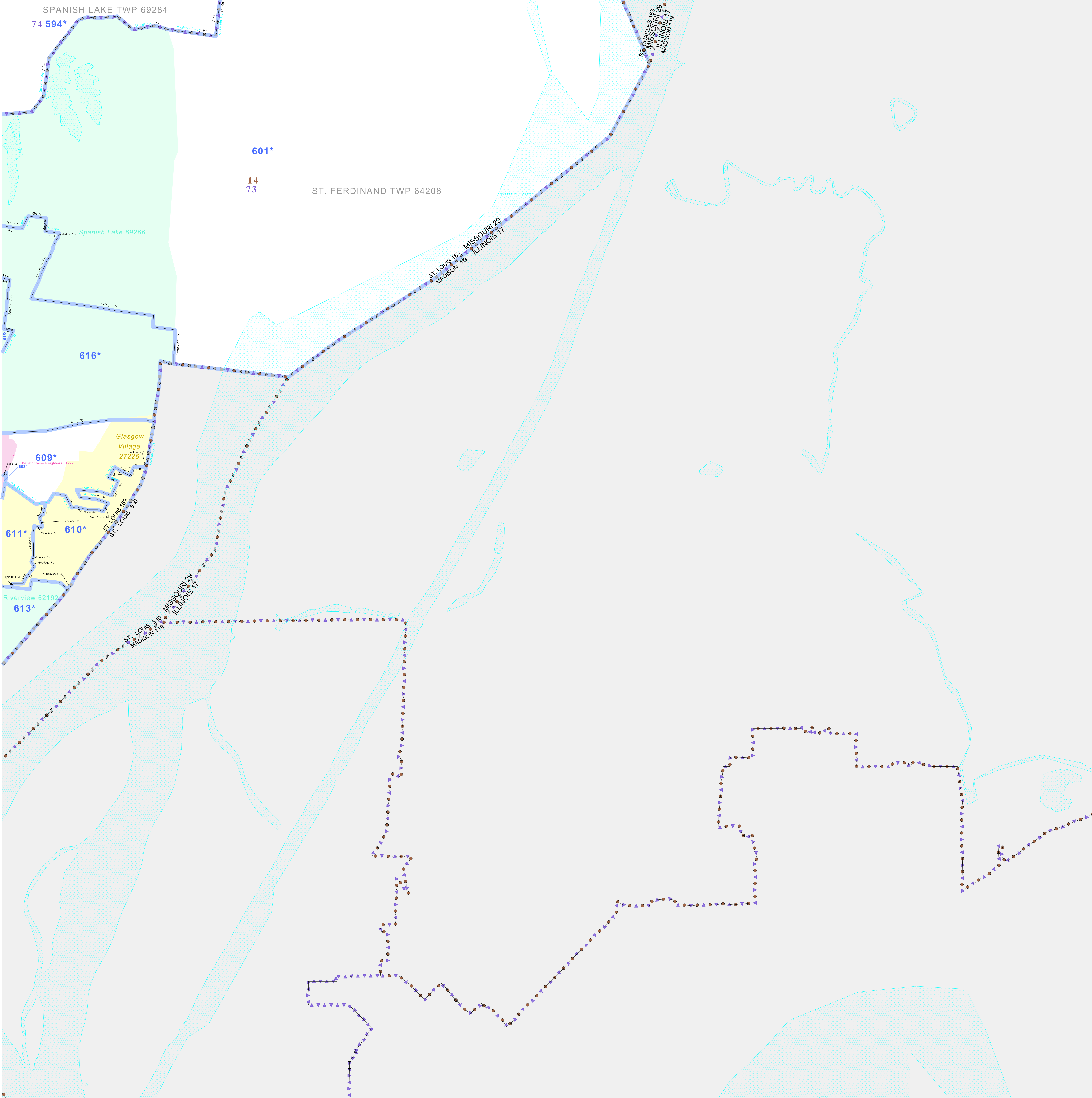


38 812505N  
90 205041W

38 812505N  
90 058950W



### GEOGRAPHIC AREAS LEGEND

SYMBOL	NAME STYLE
*****	INTERNATIONAL
//////	STATE
□□□□□	COUNTY
○	MINOR CIVIL DIV. <sup>1</sup>
■	Incorporated Place <sup>1</sup>
■	Census Designated Place <sup>2</sup>
—	Voting District
●	SLD-Senate
▲	SLD-House
□	Minority
□	Inset
□	Out Area

Abbreviation Reference: AIR - American Indian Reservation; SDAISA - State Designated American Indian Statistical Area

<sup>1</sup> A "\*" following a place name indicates that the place is consecutive with a MCD. A "-" indicates that the place is also a false MCD. In both cases, the MCD name is shown only when it differs from the place name.

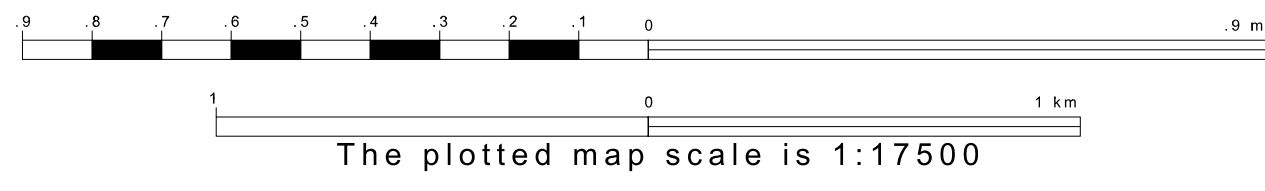
<sup>2</sup> A "\*" following a VTD code indicates an actual voting district. Its absence indicates that the VTD is a pseudo voting district or no information is available as to its status.

### Voting Districts

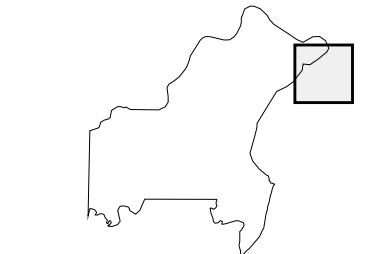
Code	Name
584*	SpanishLaks30a315F4 Voting District
601*	St Ferdinand10 Voting District
609*	St Ferdinand12 Voting District
610*	St Ferdinand23a23a27 Voting District
611*	St Ferdinand1775a17a27a27a30a34 Voting District
613*	St Ferdinand23a23 Voting District
615*	St Ferdinand6a8 Voting District
616*	St Ferdinand7a9 Voting District

38 886331N  
90 205041W

38 886331N  
90 058950W



Sheet Location within County



Key to Adjacent Sheets

2	3
6	7
11	

ST: Missouri (29)  
COU: St. Louis (189)  
SHEET 7 OF 18 PARENT SHEETS



All legal boundaries and names are as of January 1, 2000. The boundaries shown on this map are for Census Bureau statistical data collection and tabulation purposes only; their depiction and designation for statistical purposes does not constitute a determination of jurisdictional authority or rights of ownership or entitlement. U.S. DEPARTMENT OF COMMERCE Economics and Statistics Administration U.S. Census Bureau