

P.L. 94-171 VOTING DISTRICT/STATE LEGISLATIVE DISTRICT OUTLINE MAP (CENSUS 2000)

38 464133N
90.797246W

38 464133N
90.649194W



GEOGRAPHIC AREAS LEGEND

SYMBOL	NAME STYLE
*****	INTERNATIONAL
-----	STATE
- - - - -	COUNTY
.....	MINOR CIVIL DIV ¹
.....	Incorporated Place ¹
.....	Census Designated Place ²
-----	Voting District
.....	SLD-Senate
.....	SLD-House

Mapillary Inset Out Area

Abbreviation Reference: AIR - American Indian Reservation; SDAISA - State Designated American Indian Statistical Area

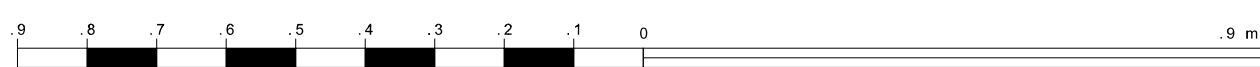
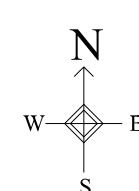
¹ A "*" following a place name indicates that the place is coterminous with a MCD. A "-" indicates that the place is also a MCD. In both cases, the MCD name is shown only when it differs from the place name.
² A "*" following a VTD code indicates an actual voting district. Its absence indicates that the VTD is a pseudo voting district or no information is available as to its status.

Voting Districts

Code	Name
387*	Meramec463464647 Voting District
409*	Meramec6416635 Voting District

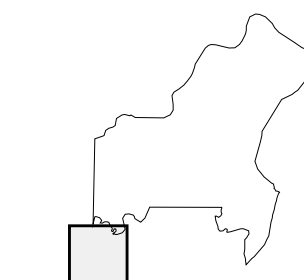
38 348009N
90.797246W

38 348009N
90.649194W



The plotted map scale is 1:17500

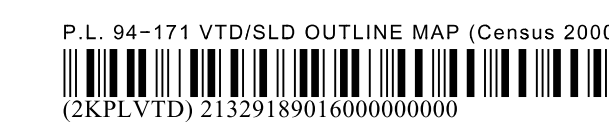
Sheet Location within County



Key to Adjacent Sheets

12	13
16	

ST: Missouri (29)
 COU: St. Louis (189)
 SHEET 16 OF 18 PARENT SHEETS



P.L. 94-171 VTD/SLD OUTLINE MAP (Census 2000)
 (CKPLVTD)2152918901000000000