

38 586744N
90 243481W

38 586744N
90 158843W



GEOGRAPHIC AREAS LEGEND

SYMBOL	NAME STYLE
*****	INTERNATIONAL
//////	STATE
■■■■■	COUNTY
●●●●●	MINOR CIVIL DIV ¹
Yellow	Incorporated Place ¹
Light Green	Census Designated Place ²
Blue	Voting District
●●●●●	SLD-Senate
▲▲▲▲▲	SLD-House
.....	Minority
Inset	Inset
Out Area	Out Area

Abbreviation Reference: AIR - American Indian Reservation; SDAISA - State Designated American Indian Statistical Area

¹ A "*" following a place name indicates that the place is coterminous with a MCD. A "-" indicates that the place is also a false MCD. In both cases, the MCD name is shown only when it differs from the place name.

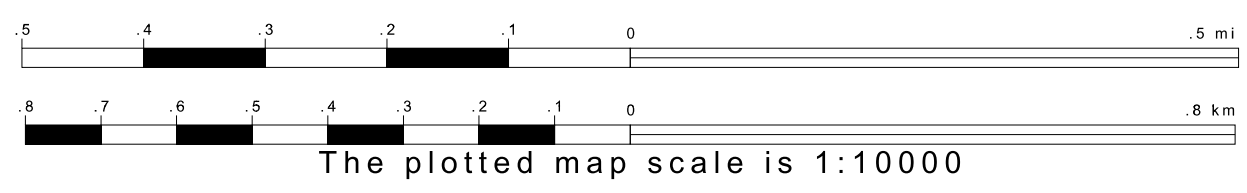
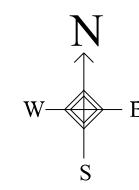
² A "*" following a VTD code indicates an actual voting district. Its absence indicates that the VTD is a pseudo voting district or no information is available as to its status.

Voting Districts

Code	Name
15*	WardPct15
17*	WardPct17
18*	WardPct18
19*	WardPct19
20*	WardPct20
21*	WardPct21
22*	WardPct22
23*	WardPct23
24*	WardPct24
31*	WardPct31
32*	WardPct32
33*	WardPct33
34*	WardPct34
35*	WardPct35
57*	WardPct57
58*	WardPct58
59*	WardPct59
61*	WardPct61
108	WardPct108
231*	WardPct231
238*	WardPct238
334*	WardPct334

38 520388N
90 243481W

38 520388N
90 158843W



Sheet Location within County



Key to Adjacent Sheets

5	6
7	8

ST: Missouri (29)
COU: St. Louis (510)
SHEET 8 OF 8 PARENT SHEETS

