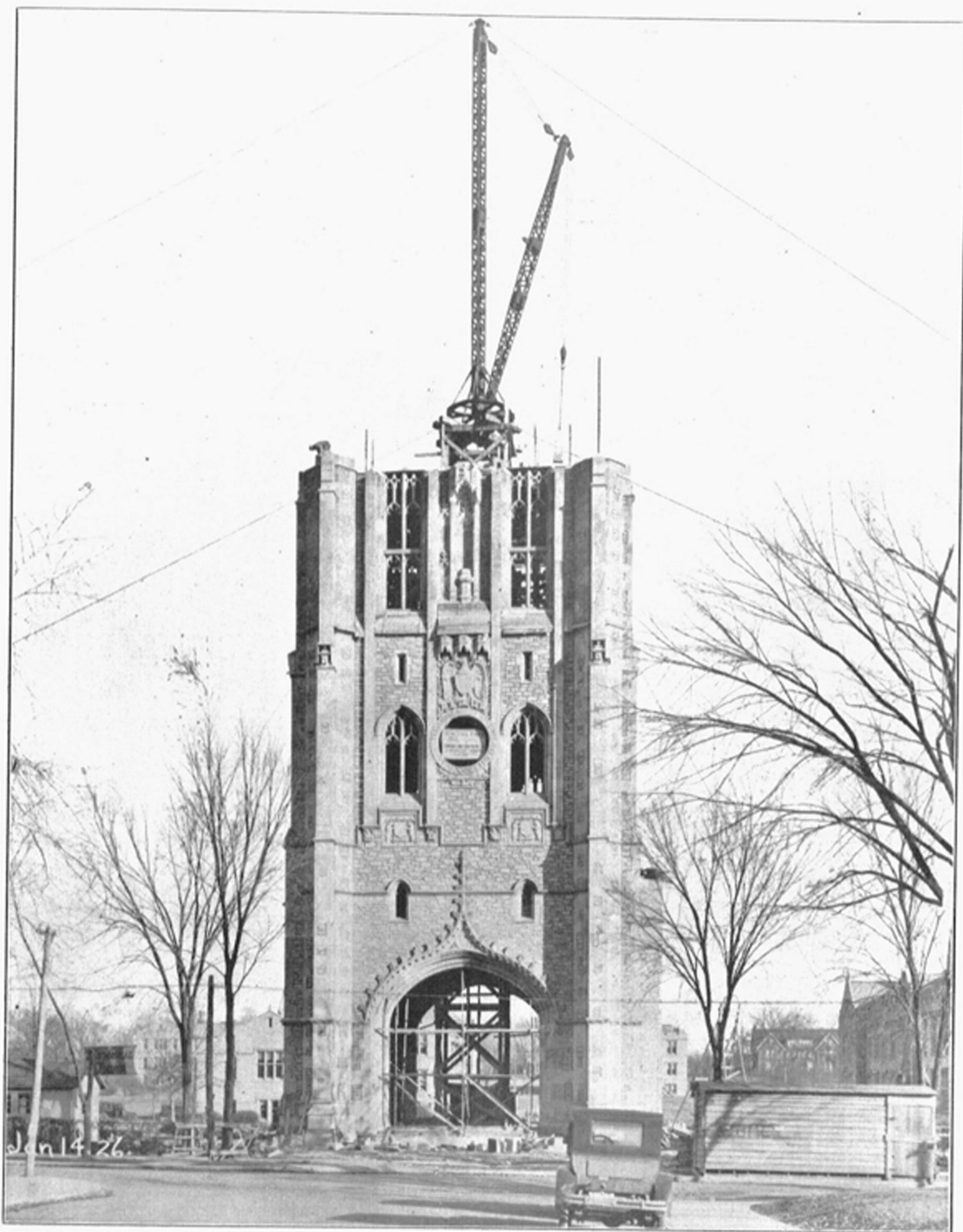

The Missouri Alumnus

Volume XLV

January 1926

Number 5



The beautiful Memorial Tower is nearing completion. The contract for the last unit has just been let.

Service Supreme

BETWEEN

St. Louis and Chicago

The luxurious service of the Wabash Railway provide travel comforts and conveniences that are appreciated by the discriminating traveler.



THE NEW BANNER BLUE LIMITED

"The Train of Trains"

Fast 6½ hours afternoon service

'MIDNIGHT LIMITED'

Leaves both St. Louis and Chicago at five minutes after midnight.



"DELMAR EXPRESS"

The early evening train. Stops at Delmar Ave., St. Louis in both directions.



"CHICAGO-ST. LOUIS SPECIAL"

The early morning train from St. Louis. An afternoon train from Chicago.



Ticket agents everywhere will secure reservations over Wabash and sell thru tickets.

H. E. WATTS,

Passenger Traffic Manager, St. Louis



Follow the flag
Wabash

American Color Engraving Co.



Artists, Designers
Photo-Engravers

For All Printing
and Advertising Purposes

914 Pine St.

St. Louis, Mo.



Send your
Engraving
Work
to

**BURGER
ENGRAVING
COMPANY**

ARTISTS
DESIGNERS
PHOTO ENGRAVERS

8th and Wyandotte
KANSAS CITY, MISSOURI

"Burger
Illustrations
build
Business!"



BEN F. SEWARD
'14
VICE PRESIDENT

*Jimmie
Remembers
You---*



Come in and enjoy a good meal when in Columbia. Your friends will be here.

Just remember who has served you the best and is still the best place to dine.



*Jimmie's
College Inn*



**sunny hours
through a scenic
wonderland**

then

**Calif-
ornia**

**Where the warmth of
spring awaits you
and your family**

Santa Fe "all the way" the ideal route to California.

Fred Harvey dining service—another exclusive Santa Fe feature is supreme in the transportation world. Through Pullmans via Grand Canyon National Park—

THE MISSOURI ALUMNUS

Vol. XIV. No. 5

JANUARY, 1926

COLUMBIA, MO.

The Meaning of an A. B. Degree

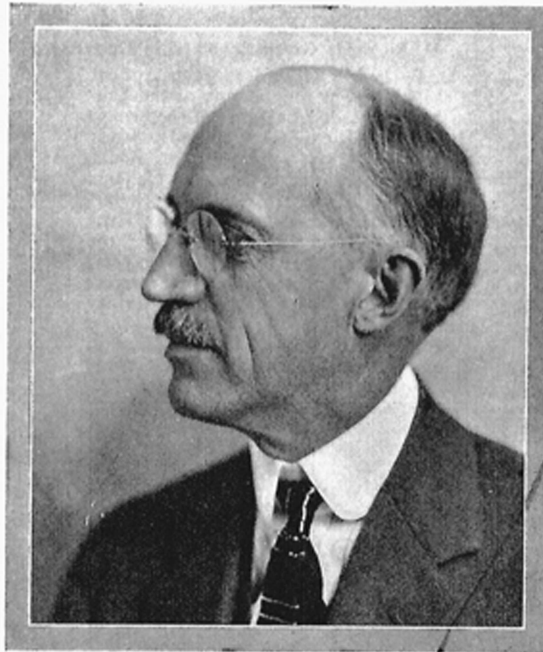
BY FREDERICK M. TISDEL,

Dean of the College of Arts and Science

WHEN parents send a son to the University they may have in mind that he will perhaps win fame as a debater or football player or college editor or cheer leader; that he may be elected president of his class or president of the entire student body; that he may possibly join a fraternity and make close and lasting friendship with the men who are to be prominent in the life of his generation; that he will certainly have four or five happy years to enjoy and remember. They will think all these considerations worth while; but will realize also, that, in the last analysis, they are but incidental considerations. Their deeper thought will be somewhat as follows; perhaps the father will express it to his son in so many words:

"Well, John, I am sending you to the University at considerable sacrifice. Let me tell you why. I want you to have greater advantages in life than I have had. I want you to be able to earn a living easier and to lay up something for your old age easier than your father has been able to do. I should like you to have deeper and richer sources of enjoyment in your personal life. Moreover, I should like you to be prepared for an influential place in the community in which you live so that later, when you are put in the grave, your neighbors will not think that that is where you should have been put long before, but will think, rather, that your death is a distinct loss because your influence has always tended to the building up of the community, making it a better place in which to live. If the University can help you to do this, do not neglect your opportunities."

This is a reasonable expectation. The university student should have an opportunity to learn the technique of a business or profession, to get an insight into the meaning and worth of life, and to prepare himself for intelligent citizenship. Every division of the University has a part in teaching students how to make a living. The technical and professional divisions are devoted almost exclusively to this purpose and the College of Arts and Science has its part to play also, because it



teaches all the theoretical subjects upon which the business and professional courses are based. Engineering is the practical application of physics and chemistry. Medicine is the application of the laws of zoology and chemistry to the problems of health and disease. Law is, to a large extent, the technical side of political science. Business Administration is applied economics. These and other fundamental subjects are all taught in the College of Arts and Science.

However, the College of Arts and Science is not simply a preparatory school for the professions. It is this; but it is more also. It aims to make free citizens of the modern world with ability to think logically to a definite end; to think without prejudice; and to acquire a sense of values and get an insight into the meaning and worth of life. To be a citizen of the modern world is no small matter, for it is a very complicated world. There is first of all the physical world opened to us by natural science, a world of marvels and mysteries

and even miracles—not only what can be known through the unaided senses, but also what the microscope and the telescope reveal, from the tiny electrons so instinct with energy and moving with such incredible velocity, up to the stars so large that if one of them, and by no means the largest, were placed in our solar system with its center corresponding with the center of the sun, we on the earth, far as we are from that center, would still be within the limits of the star. Then there is the world of our own inner experiences, a perfect welter of thoughts, feelings, desires, loves, hates, ambitions, aspirations, visions, and dreams, ideas of beauty and truth and justice, a sense of the rightness and wrongness of things, a consciousness of living in a spiritual as well as a physical world. There is also the world of human society with its long history of experiment on how men may live together in comfort and peace in families and tribes and communities and states, with its complicated business and industrial system developed from small beginnings yet constantly expanding until now we make and distribute an infinite variety of things useful and useless for the use and misuse of men, and with its highly developed social ideas and social ethics which have made of private business a public trust with community responsibilities and obligations. It is the purpose of the College of Arts and Science to make people intelligent citizens of the world. The A.B. degree is the naturalization paper, a certificate of citizenship; and if a student is graduated with distinction that is his nomination for leadership and high office therein.

The studies of the college are divided into three groups: first, studies in the natural sciences, physical and biological; second, the humanistic studies,—philosophy, history, literature, and art; and third, the social sciences of economics, political science, and sociology. A college graduate should have been introduced to each of these three groups of studies and

(Now, Page 132, Please)

EXECUTIVE BOARD APPROVES**BUDGET OF \$1,320,000 FOR 1926**

A budget of \$1,320,000 for the University in 1926 was approved by the Executive Board of the Board of Curators at a meeting on January 4 in the office of E. Lansing Ray in St. Louis.

By request of James M. Wood, president of Stephens College, the board decided to allow students from Stephens and Christian colleges to enroll in certain courses on the University without payment of the regular hospital and incidental fee. The entrance fee for such students will be \$2 per credit hour each semester, and an additional \$5 for non-residents of Missouri.

Dr. Stratton D. Brooks presided at the meeting. Other members present were F. M. McDavid of Springfield; H. J. Blanton of Paris; and Orville M. Barnett, secretary of the University. Mr. Ray was not at the meeting because of absence from St. Louis on business.

The board decided to accept the offer of Phi Mu Epsilon, national mathematics fraternity, to establish an annual prize to be given to the sophomore or junior member of the class in integral calculus who makes the highest grade in that subject. A special examination will be held each year to determine the winner.

The appointments of alumni representatives on the Committee of Intercollegiate Athletics for 1925 by the alumni association of Kansas City and St. Louis were approved. The members appointed were Spencer F. Harris of Kansas City, and Earl F. Nelson of St. Louis.

Prof. Frank L. Martin was appointed acting dean of the School of Journalism in the absence of Dean Walter Williams in an exchange of professors with the University of Mexico.

Robert W. Jacobs, Sylvia Ragon and J. Willard Ridings were appointed student assistants in the School of Journalism for the second semester.

Other appointments made were: Nellie G. Dail, assistant in charge of biology; James Rutter, assistant storekeeper in storeroom A; Woodburn O. Ross, graduate assistant in English for the second semester; B. M. McQueen, instructor in field crops for 1926; Ralph R. Parks, research assistant in agricultural engineering, to start February 1.

Gus S. Gehlbach was appointed county extension agent for Saline County, to become effective February 1, and Eugene E. Brasfield was made district extension agent for Howell and Ozark counties.

Miss Louise Hilligass was appointed superintendent of University Hospitals to succeed Mrs. Saidee Hausmann, who resigned Jan. 1.

In the Extension Division, Harold P. Fling was appointed to teach an extension course in Flat River; Eugene L. Johnson at Rolla; and Miss Edith Freeman at Fulton.

Leaves of absence from the University for the second semester were granted to Miss Dorothy Kaucher, instructor in English, and Miss Ruby Cline, instructor in physical education. A year's leave of absence was granted to Prof. Max Ellis of the physiology department to do research work in Europe.

The following resignations were accepted: B. P. Stewart, research assistant in agricultural engineering, resigned Dec. 15; R. L. Ferry, district extension agent resigned Nov. 30; Henrietta Williams, home economics specialist, resigned Nov. 30; and Mildred Nowell, secretary to the dean of men, resigned Nov. 30.

Professors for the summer session of 1926 were appointed.

State Veterinarians Meet Here.

The annual meeting of the State Veterinarian Association was held in Columbia during the latter week of December. The arrangements were in charge of Dr. J. W. Connaway, chairman of the department of veterinary science of the University.

Dr. John W. Adams, president of the American Veterinary Medical Association and professor of veterinary surgery, University of Pennsylvania, was the principal guest.

D. P. Richards Gives Scholarship Cup

D. P. (Pearl) Richards, former student of the College of Engineering of the University of Missouri, member of the firm of Maschmeyer-Richards Wholesale Silver Merchants, 315 N. 7th Street, St. Louis, has today presented to the Pan-Hellenic organization of the University, a scholarship cup, to be used as an award to the fraternity whose freshmen have the highest scholarship average for the year. The cup is given to create a greater interest and responsibility among the fraternity pledges.

Mr. Richards was born and reared in Columbia. He married Miss Gertrude

**D. P. Richards**

Lucille Campbell in 1904. They have three sons, two of whom are enrolled in the University, D. P. Jr., and Ralph C. and are members of the Sigma Chi fraternity.

Tom K. Smith, A. B. '04, vice-president of Kaufmann, Smith & Co., some years ago gave a cup to the Pan-Hellenic Council to be awarded each year to the fraternity making the highest grades during the year.

Dean Mumford Is Toastmaster.

Dean F. B. Mumford of the College of Agriculture, was toastmaster at the banquet given at the Saddle and Sirolo Club, Chicago, Nov. 29, in honor of Dean Charles F. Curtiss of the Iowa State College of Agriculture. The speakers were: W. H. Pew, C. L. Burlingham, John Clay, Hon. Frank O. Lowden, Governor H. E. Gore of W. Va., and H. H. Saunders of the Breeders Gazette.

Three Graduates Wintering in Florida.

Three University of Missouri graduates are spending the winter in Key West Fla., the southernmost point in the United States. They are Miss Hannah Lazarus, B. J. '23, editorial staff of The Key West Citizen; Miss Vivien Myers, A. B. '23, teacher, and Miss Kathryn Myers, A. B. '24, secretary to the secretary-treasurer of the South Florida Contracting and Engineering Company. Another alumnus, Austin Drew, also is living in Key West. He is the general manager of the Over Sea Company, one of the largest real estate firms there.

MEANING OF AN A. B. DEGREE*(Continued from Page 131)*

should have specialized in one. He should be imbued with the scientific spirit and become familiar with the scientific method. He should have come to see the beauty of truth and the truth of beauty, and to have gained some sense of relative values. He should have been imbued with the social spirit and be ready to assume the duty of social service. In other words, he should know how to think straight, to think with a sense of values, to think to a social purpose. These are the marks of a disciplined and free mind.

But can the college do this? Did you ever see a college senior who was a genuine citizen of this complicated world, who had any adequate notion of the unity of knowledge, who could move with precision and freedom among the things of the mind and estimate with ripe judgment the meaning and worth of the experiences which come crowding in upon him every hour of the day? The answer is "no!" But, on the other hand, did you ever see a senior in a law school who was a learned jurist, or a senior in medicine who was a skilled surgeon or diagnostician, or a senior in engineering who could be called an expert engineer? All that the University can do in any school is to start a student on the road of life. Accomplishment comes only with experience. Ripeness belongs to the autumn, not to the spring.

The thoroughly educated man has both a liberal and a professional or technical education. Real university men are not just seekers after money; they are seekers after truth, advocates of justice, lovers of beauty, public spirited men. On the circular window of the tower erected in memory of Missouri graduates and students who died in the great war is the following inscription set up as a University ideal: "In sapientia ambulat tempus redimentes"—Walk in wisdom, redeeming the time, liberating your age, setting free your generation. This is a call beyond that of professional or technical skill.

A New Alma Mater Song by Thomas T. Railey, Alumnus

A NEW Alma Mater, the words written by Thomas T. Railey, an alumnus of the University of Missouri, in the legal department of the Missouri Pacific Railway Co., St. Louis, and the music by James T. Quarles, Dean of the School of Fine Arts, has just been received from the press. Thomas Railey has already identified himself with the songs of "Old Mizzou" and is well known to the old grads as the composer of many popular University songs.

The new Alma Mater, a copy of which is printed herewith, will be used by the Glee Club in the place of "Old Missouri" for the balance of the year. It was sung for the first time at the Glee Club Concert in Columbia on January 13. It will be sung at Wichita as the college contest number in the Missouri Valley Conference Championship contest to be held in that city, between the Glee Clubs of the Missouri Valley Conference, on Feb. 5.

Of course, all loyal Missourians expect the Glee Club to win the championship once more and it is hoped that a college song may be an aid to this contest. "Old Missouri" with its beautiful words, is not distinctively Missourian because the tune is used by some half dozen other Universities in America.

The new Alma Mater has been copyrighted and the copyright will be assigned to a group of trustees who will hold it for the benefit of the Glee Club or allied musical activities in the University. The profit on every copy sold will thus be an aid to the worthy student musical activities. Copies can be obtained through the office of the Missouri Alumnus, price 25c.

This Alma Mater has been arranged for women's chorus, male chorus and mixed chorus. The version for mixed voices is the one that will ordinarily be used. The arrangement for women's voices will be used by the women's glee Club of the University and the arrangement for men's voices will be used by the Men's Glee Club.

Is Appointed Supervisor of Arts

Miss Ella V. Dobbs, A. M. '13, associate professor of industrial arts, immediate past president of the Missouri State Teachers' Association, was appointed on Dec. 17 by State Superintendent of Schools, Charles A. Lee, as state supervisor of Arts, James T. Sleeper of the School of Fine Arts was appointed as state supervisor of public school music.

Women Debaters to Meet Washington U.

University women now have a debating team and according to George Hulbert debating coach, they will meet the team of women debaters from Washington University in Columbia on April 22 to debate the question, "Resolved, that the Child Labor Amendment to the Constitution Should be Ratified by the Various States."

Y. W. C. A. to Have First Home

The Young Women's Christian Association of the University has announced that for the first time in the history of the University the Y. W. C. A. will have a home of its own which will occupy the first floor of the house at 911 Lowry Street, beginning, February 1. This will include living quarters for four girls and Miss Helen D. Wolcott, secretary of the University Y. W. C. A.

Annual Christmas Feed at Harris'

The annual Christmas rabbit feed, sponsored by the Y. M. and Y. W. C. A., given in honor of the University students who remain in Columbia during the Christmas holidays, was given at Harris' on Dec. 30. The following were on the program: Glenn W. Hovey, Dr. Milton C. Townner, Rev. J. M. Alexander, Katherine Pritchard, Clyde Duncan, Franceswayne Allen, John Quincy Adams, A. B. '23, A. B. '25, Instructor in Geography; Sarah Ann Wheeler, Elza Johnson, Henry Depping, student president; Isaac Skelton, president senior class; Captain Hugh B. Hester, Fred Dixon, Hugh Williamson, Editor of the Savitar, and Bob Hill, Toastmaster.

Alma Mater

(Mixed Voices)

Words by
THOMAS T. RAILEY

Music by
JAMES T. QUARLES

Maestoso

Dear Al - ma Ma - ter, Ev - 'ry son and daugh - ter
Old Al - ma Ma - ter, Ma - ter of Mis - sou - ri,

cresc. -
With one ac - cord to thee Turns with pride, old
Long may your name en - dure, May your fame re -

mf
Var - si - ty; Mis - sou - ri, great and grand, Loy - al - ty and
main se - cure; Though years may come and go, Though our heads are

help - ing hand We pledge a - new To you.
white as snow, We'll eer be true To you.

University Will Have Course in Ceramic Engineering at Rolla

THE University of Missouri will establish a course in Ceramic Engineering beginning with the next fall term. The department will be located at the Missouri School of Mines and Metallurgy at Rolla, Missouri. This announcement was recently made following a meeting of the Executive Committee of the Board of Curators of the School at a regular meeting in St. Louis.

The course will be a four-year course leading to the degree of Bachelor of Science in Ceramic Engineering.

Some enterprising reporter recently asked, "What is ceramic engineering?" Briefly expressing it, the answer he received was as follows: "Ceramics is the art of working in clay. It includes such varied fields as the making of common brick, face brick, paving brick, fire brick and special fire clay shapes for industrial furnaces; also, pottery, chinaware, terra cotta forms and shapes for buildings, sewer tile and drain tile."

Because of the importance of the clay industry in Missouri, there has been a constant growing demand for a school of ceramics. Recently a committee, representing the clay industry of the State, visited the Missouri School of Mines at Rolla in the interest of this work. Later they submitted a written request to Dr. Chas. H. Fulton, Director of the Missouri School of Mines and Metallurgy, asking that the State establish a school.

This committee pointed out the fact that Missouri is the second state in the Union as a producer of clay. They furthermore pointed out that clay products and raw clay stand second only to lead in value in the state of Missouri. The following table gives interesting facts toward the rapid growth of this industry in the state.

Products	Value, 1921.	Value, 1924.
Lead.....	\$16,207,650.	\$28,279,183.
Clay products and raw clay.....	11,606,826.	18,363,904.
Coal.....	13,915,500.	11,600,000.
Zinc.....	1,084,500.	2,516,332.

Practically all Ceramic Engineers employed by Missouri firms are trained in Eastern and Northern schools. It's hoped that this new Department in the University of Missouri at Rolla will open an opportunity for Missouri men to make a four year's study of this very important local state industry.

J. Harrison Brown, who was graduated from the School of Journalism at the University of Missouri in 1914, is chairman of the committee. He is at present secretary and sales manager of the A. P. Green Fire Brick Company, Mexico, Mo. Other members of the committee are L. J. Blackmer, Blackmer Post Pipe Company, St. Louis, Missouri; J. K. Payne, Hydraulic Press Brick Company, St. Louis, Missouri; J. G. Hewitt, Winkle Terra Cotta Company, St. Louis, Missouri; L. U. Nicholl, Fulton Fire Brick Company, Fulton, Missouri; J. H. McKelvey,

Laclede-Christy Clay Products Company, St. Louis, Missouri, and C. W. Parker, Walsh Fire Clay Products Company, St. Louis, Missouri.

200 COUNTY AGENTS AND EXTENSION WORKERS MEET

The annual meeting of the 200 county agents and extension workers of Missouri was held at the College of Agriculture on December 10-11-12. The majority in attendance were either alumni or former students of the University, and it was indeed a pleasure to have the group on the campus for these three days.

The annual banquet was presided over by J. M. Huston, B.S. in Ag. '14, president of the Missouri County Agents' Association. The speakers were A. J. Meyer, director of Extension, Dean F. B. Mumford, President Stratton D. Brooks, and Professor J. W. Hudson.

The officers are: Stewart Leaming, vice-president, Robert S. Clough, B.S. in Ag. '17, County Agent, Pettis County; Ira Drymon, B.S. in Ag. '18, Farm Bureau Independence, Mo., and C. W. Campbell, B.S. in Ag. '23, County Agent, Pike County, directors.

The new officers are: Stewart Leaming, president; Frank Stoner, B.S. in Ag. '22, County Agent, Callaway County, vice-president; E. T. Tschner, B.S. in Ag. '21, Jefferson County, secretary-treasurer; C. W. Campbell and J. Robert Hall, B.S. in Ag. '17, County Agent, Linn County, directors.

Ag Building Named "Waters Hall"

The East Agriculture Building on the White Campus has been named "Waters Hall" by the Board of Curators in honor of the late H. J. Waters who was formerly Dean of the College of Agriculture. This action was taken by the executive board at their meeting in the office of E. Lansing Ray, editor of the Globe-Democrat, St. Louis, Mo., on December 5.

The board also voted to accept the gift of a brass plaque to be placed on the campus of the university by the Missouri Ruralist and each year the name of some student who has done outstanding work in agricultural journalism to be engraved on the plaque. This gift to the university comes about through the editor of the Missouri Ruralist John F. Case, President of the Missouri state board of agriculture. Students of the University each year edit the January issue of The Ruralist.

College of Agriculture Broadcasts Over Station KRFU Semi-Weekly.

The Missouri College of Agriculture inaugurated a radio "school" on December 15 over KRFU, the Stephens College Station. The initial talk was given by Dean F. B. Mumford, which is the first of the semi-weekly agricultural talks to be broadcast by the members of the faculty of the College of Agriculture over the Stephens College Station, every Tuesday and Friday evening at 7 o'clock.

GRADUATE STUDENTS WILL ORGANIZE AT COMMENCEMENT

Graduate school alumni and graduate students throughout the county are organizing for the purpose of furthering the interests of their respective graduate schools.

In line with this development, the Graduate School alumni of the University of Missouri will form an organization during Commencement Week, 1926.

Graduate students now in residence organized on November 5. For the first time a float representing the Graduate School was to be seen in this year's Homecoming Parade. Further activities are planned such as; a social reception for the purpose of getting better acquainted, lectures on research, and luncheons and dinners given on the occasion of visits to the University by distinguished men of research.

Those who hold the degree of Master of Arts or Doctor of Philosophy or have been registered in the Graduate School should plan to attend the Commencement Week, 1926, when an organization will be perfected for the purpose of boosting the Graduate School.

Freshman Day a Success.

Freshman Day at the University of Missouri, held for the first time, on Dec. 8, was such a success that it will doubtless become one of the features of the University school program. To Henry Depping, student president, goes the credit for putting the idea and plan over successfully.

Freshman Classes were dismissed and they packed the Auditorium the whole day to listen to addresses covering every phase on University life which freshmen should know—how to study, student activities, available scholarships, trophies, awards, honorary organizations, traditions relations of school to state, school spirit, class organization, and many more important subjects. The speakers were President Brooks; Dean Kerner, Professor Parks, J. W. Hudson, Bob Hill, C. L. Brewer, and others.

Freshman class officers were elected as follows: President, Hilary Lee, Charleston, Mo.; vice president, Howard R. Hulen, Centralia, Mo.; secretary, Emily Kingsbury, Joplin, Mo.; treasurer, Louise Sparrow, Kansas City, Mo.

Will Seek Rotary Scholarships

John C. Hall, LL.B. '01, Sigma Nu, president of the St. Louis Building & Loan Association, and Governor of this, the 14th district of Rotary International, made his official visit to the Rotary Club of Columbia on December 10, at which time a formal dinner party was given in his honor. In his address to the Rotarians he stated that he was going to make the feature of his administration the securing of one or more scholarships from each of the 24 Rotary Clubs in the 14th district, to send boys and girls to the University of Missouri. For this idea, Governor Hall has been commended and congratulated, and wide publicity both in the form of news and editorials is greeting Governor Hall's announcement.

Glee Club in Successful Tour of Southeast Missouri

MISSOURI'S championship Glee Club, under the directorship of Prof. Herbert Wall of the School of Fine Arts, spent the week of December 14 on a successful concert tour of Southeast Missouri.

The first concert was given in Flat River, where the club was received with a great deal of enthusiasm, and the patrons there have asked that the Glee Club come to Flat River next year.

On December 15, the second performance was given in Kennett, where Oliver Zimmerman, LL. B. '11, president of the Lions Club, had charge of arrangements. All the alumni and former students in and around Kennett participated in the entertainment of the club members. Professor Wall addressed the school children through the courtesy of Superintendent Jennings. Mr. Zimmerman sold all the seats for the concert at Kennett within fifteen minutes after the box office was opened.

On the 16th, the club gave the third concert at Caruthersville, where the alumni met and entertained the members at the hotel. Here too, Professor Wall addressed the school children and presented the members of the Glee Club to them. Caruthersville has requested a return engagement next year.

Floyd Barnhart, B. S. in Ag. '22, Farm House, Alpha Zeta, a former member of the Glee Club, now teacher of vocational agriculture in Caruthersville, sponsored the concert there. In commenting on the concert Mr. Barnhart said, "You may rest assured that the Glee Club was a success. Everyone seems very anxious to have the Club return next year."

The final concert of the trip was given December 17 at Cape Girardeau, sponsored by the Southeast Missouri State Teachers' College. The boys were met by Donald D. Black, B. S. in B. A. '24. After the concert William Palmer Oliver, '06-'08, president of the Rotary Club of Cape Girardeau, and Edward Drum, LL. B. '02, and a great group of alumni entertained the Glee Club with a dance at the Country Club.

M. L. Diekroeger, A. B. '24, Alpha Kappa Kappa, head of the Department of physiology and hygiene, Southeast Missouri State Teachers College, reported, "It was with very much enthusiasm and loyalty that the large audience of Cape Girardeau former students and alumni welcomed the boys from 'Old Mizzou.' Send them, as often as you like—Southeast Missouri will always welcome them."

The officers of the Glee Club are: President, William J. Abbott; vice-president, Lee S. Montgomery; secretary, Howard Joyner; business manager, Gleen L. Milburn; assistant business manager, William Scannell; librarian, Lester Mad-dox.

FINE BIG RALLY MEETING

IN KANSAS CITY NOV. 20

The Kansas City Alumni Association under the leadership of William Norris (Bill) Rider, B. S. in Ag. '18, president, and James E. (Jimmie) Wild, '15-'23, secretary, staged a mighty big, fine rally meeting at the University Club the night before the Kansas-Missouri game. Several hundred alumni and former students were there from every section of country and it was indeed a lively and enthusiastic group, and there was an undercurrent of serious intent to show enthusiasm for University support.

President Rider presided, and first introduced Glenn R. (Jack) Horner, LL. B. '07, A. B. '09, old Missouri track man, now an Oklahoma State senator, and president of the Okmulgee alumni association, who told some good stories about Dr. Brooks when he was president of the University of Oklahoma.

Then Chester (Doc) Miller, the University cheer leader was introduced and the alumni practiced the University songs and yells and made ready for the lung support on the morrow.

President Stratton D. Brooks was the first speaker and the honor guest of the occasion. He responded with a short speech in keeping the spirit of the meeting and was greeted warmly by the hundreds of alumni from every section of the United States.

Henry Depping, student president, pleased the audience with compliments on alumni activities and gave a report of his trust as student president.

Judge Merrill E. Otis, A. B. '06, LL. B. and A. M. '10, was presented and as usual pleased his hearers immensely, for Judge Otis is decidedly popular among his fellow alumni.

Then followed the athletic talks, a detailed discussion by Chester L. Brewer, Director of Athletics, on the athletic situation at the University of Missouri. Mr. Brewer was commended for bringing together such a happy family in the Missouri department of athletics.

Coaches Henry, Crangle, and Lansing responded to toasts and told about the prospects for the game, discussed the football season and warned the listeners that the Kansas game was the hardest on the Missouri 1925 schedule. Support was pledged to these coaches that, win or lose, the fine Missouri Spirit would prevail.

Doctor J. C. Jones, Director of the Memorial Union and Stadium Campaign, reported the progress of the Memorial Campaign and urged the alumni and former students who were in arrears to pay up on their pledges at once in order that money needed for rapid construction on the Memorial Tower, and for the letting of the contract for the first unit of the Memorial Stadium, could go right along without any delay.

B. T. Hurwitz, A. B. '18, made the response to the visiting alumni in behalf of the Kansas City group, and told a number of humorous stories and as usual won the support of his audience by his wit and humor.

Bob Hill, Alumni Recorder, briefly greeted the group and pledged his life-long support to their cause.

Louis V. Stigall, LL. B. '10, attorney of St. Joseph, was the principal and last speaker on the program in his splendid oratorical style delivered one of the finest alumni addresses ever heard in Kansas City. He kept the crowd laughing from start to finish, telling of student pranks, University traditions, and with it all he carried an undercurrent of seriousness which went home to the hearts of the alumni and called to their attention their more dignified indebtedness to their alma mater.

Ed. S. North, LL. B. '05, attorney at Kansas City, offered the following resolution which was unanimously endorsed:

"BE IT RESOLVED: That it is the sense of those here present that the officers elected to direct the affairs of this association for the ensuing year deserve better support than has been given to preceding administrations;

"Furthermore, that incoming officers should be encouraged to undertake more regular and consistent activities for the work of the association than those of the past few years.

"And finally, that the Alumni present pledge their hearty cooperation in any activities undertaken by the incoming officers and suggest a tentative program: First, some business-like plan for financing the work of the Association including stated dues; second, luncheon meetings at least monthly from September 1 to June 1; third, the establishment of a student loan fund to be administered under some definite plan of operation with trustees to be elected or approved under regulations approved at a meeting of the members of the association."

President Rider then called for the report of the nominating committee, consisting of James E. Gibson, A. B. '02; Walton Holmes, '15-'22; Ed. S. North, LL. B. '05; William E. Kemp, A. B. '14; Sam B. Strother, LL. B. '93; Dupuy Warwick, LL. B. '22; John W. Hudson, A. B. '20; James E. Wild, '15-'22; R. B. Caldwell, A. B. '03, LL. B. '07; and the following officers for the ensuing year were recommended by the committee and were elected unanimously: President, Harry B. Walker, '89-'93; first vice-president, Virgil Yates, LL. B. '09; second vice-president, John W. Hudson, A. B. '20; secretary-treasurer, James E. Wild, '15-'23.

Spencer F. Harris, LL. B. '99, the member on Intercollegiate Athletics from Kansas City, was unanimously re-elected.

President-elect Walker was introduced by President Rider and asked for the support of the Kansas City Alumni Association in an endeavor to follow out the resolutions presented by Mr. North.

In conclusion, Dr. Radford T. Pittam, A. B. '18, played "Old Missouri," the alumni joined in lustily, and one of the finest alumni meetings ever held in Kansas City came to a happy conclusion.

Dallas School and West Virginia on 1926 Football Schedule

1926 Football Schedule

- Oct. 2.—Tulane at Columbia.
 Oct. 9.—Nebraska at Lincoln.
 Oct. 16.—Southern Methodist U.
 at Columbia.
 Oct. 23.—Iowa State at Ames.
 Oct. 30.—U. of West Virginia at
 Morgantown.
 Nov. 6.—Oklahoma at Norman.
 Nov. 13.—Washington at Columbia
 Nov. 25.—Kansas at Columbia.

The 1926 football schedule is complete as outlined above. C. L. Brewer, Director of Athletics, has announced a schedule with Southern Methodist University and the University of W. Virginia, which means that the Tigers will play S.M.U. in Dallas in 1927 and the University of W. Virginia will play in Columbia that year. The alumni in Dallas and Morgantown are already making big preparations to entertain the Tigers on those trips and to bring all the alumni in those sections to those places for big, alumni rally meetings the night before the games.

Mr. Brewer has stated that the final decision of the date of the Kansas game has not been decided upon by the authorities of the two schools. He has announced the 1926 Kansas game as Thanksgiving Day, however. He stated that Missouri authorities are getting state wide demands and urgent requests for the Jayhawkers to play on Thanksgiving day instead of the Saturday before, which is November 20.

The Missouri track schedule has been announced as follows with the Missouri Valley Conference meet at Ames on March 12 and 13:

The baseball schedule is not complete and is going to be hard to arrange due to the fact that Nebraska, Washington, Drake, Ames and Grinnell have abandoned baseball as a sport.

Five dual meets in tennis were arranged, two with Washington, two with Kansas, and one with Drake. The Missouri Valley meet will be held in connection with the indoor track meet at Lincoln on May 21 and 22.

Golf has been dropped as a Conference sport. The swimming meet will be held in St. Louis, March 12 and 13 under the auspices of Washington University.

The Wrestling Tournament will be held in Norman, Okla., on the same date.

C. L. Brewer has been appointed chairman of a committee to recommend football officials for next year's game. Another committee has been appointed to designate the amount of time per day that Valley schools will be allowed to practice football.

A rule has been passed forbidding any team that is to play at home on Saturday leaving home before Friday evening. This is to avoid the missing of Friday's classes by the players.

The Missouri Valley Conference has gone on record as opposing professionalism declaring that any student who takes part in an athletic program on which profes-

sionals appear, regardless of whether he receives any compensation for his part or not, will be banned automatically from athletic competition. Another rule bars for life any coach or official who takes any part in the coaching, direction, official management or publicity management of any professional team.

C. L. Brewer and Dr. W. G. Manly, members of the official Valley Conference Committee, attended the session of the Conference when the above matters were decided.

TOM HALL SAID HE KNEW THEM BY THEIR SWALLOWS

John C. Hall, LL. B. '01, governor of this, the 14th District of Rotary International, and president of the St. Louis Building and Loan Association, attended the Homecoming game in Columbia. While in Kansas City on his way to attend the Kansas game, Spencer F. Harris, LL. B. '07, a member of the Committee on Intercollegiate Athletics, asked John how he enjoyed Homecoming. He discussed the game in detail and told of the pleasure he had in meeting old friends and classmates, and then told the following:

"I might mention in passing, a little incident that happened which illustrates different methods of recalling old acquaintances. While a student in the University many years ago a distinct character in Columbia was one Tom Hall, who fitted perfectly a white apron and conducted a famous thirt emporium at the seat of learning, and, of course, was the professor of at least a gurgling acquaintance with many students.

"I do not mean to suggest that my acquaintance with Tom was of this nature. I simply knew him because of the similarity of names, Tom Hall and John Hall being euphonious solumates. By chance, last Saturday I met Tom Hall for the first time in many years. Even with the absence of a brass rail and mahogany between us, I recognized him instantly and sought to greet him. He met my eye but showed no visible signs of recognition and I realized at once his distress and sought to encourage him by suggestive remarks as to the past. His distress, however, became more and more acute and finally in desperation he said, 'I just can't place you but if I could hear you swallow once, I could tell your name in a minute.' Now what do you think of that?"

De Molays Buy Lot for Dormitory

The De Molay organization has purchased a lot 150 by 212 ft. on Hillcrest Avenue, facing west just back of Rothwell Gymnasium, on which they will build the De Molay dormitory to house between 80 and 100 students and to cost \$200,000. This announcement has just been made by Frank S. Land, founder of the De Molay organization.

BASKETBALL TIGERS START SEASON WITH EASTERN TOUR

The Tiger basketball team lost to Butler University, Indianapolis, 37-15, on December 29. Flammack, Bacchus and McDonough scored the only field goals for Missouri.

On the night of December 31, the Tigers lost to Purdue University at Lafayette, Ind., by a single point, 27-26. The tigers led at the end of the half, 11-10. The game was tied seven times, and as the game was almost finished with the Tigers in the lead, Purdue scored the winning free throw.

The Tigers were defeated by Michigan 27-19 at Ann Arbor on January 2. McMillan, Tiger Captain, starred. Quoting the Michigan Alumnus: "Missouri played a good game and was the best of the three teams played on the pre-Conference schedule traveling several hundred miles and engaging in three difficult contests during one week caused the visiting team to be tired and they could not maintain the pace of the first half in the second."

Coach George A. Bond, Jr., and the trainer, "Billy" Fallon accompanied the Tiger squad.

Missouri's starting line-up included: McMillan, F.; Yunker, F.; Flammack, F.; Bacchus, C.; Buchner, G.; McDonough, G.; Every man on the squad was used as many substitutions were made in all the games.

The Tigers defeated Oklahoma Aggies at Stillwater, on January 8, in the opening game of the Missouri-Valley Conference season. Score 31-23. The Tigers came from behind late in the second half with uncanny basket shooting from mid-court.

On the following night the Tigers lost to Oklahoma at Norman, 28-23.

It was a hard game that Missouri lost to Ames, 23 to 22 at Columbia on Jan 16, the game which opened the local season. The game was one of the most thrilling and exciting ever played on the Tiger court, and it looked like a Missouri victory until Referee E. C. Quigley ruled that a field goal made by Bacchus, who was permitted to stay in the game after a fourth personal foul should not be counted. Missouri could have won easily, hands down, if the boys had been shooting baskets accurately. It was a fine example of "the game's the thing," for despite the defeat, it was a real game.

Is Guest of School of Education

J. J. Maddox, Superintendent of the St. Louis Public Schools, was the guest of the School of Education and Dean M. G. Neale on Dec. 14. He addressed the students of the School of Education on "The Place of Research in School Administration."

Easter Holidays Begin March 31

President Stratton D. Brooks has announced that since Easter Sunday will occur on April 4, the University holidays will begin Wednesday, March 31 at 12 o'clock, noon, and close Wednesday, April 7 at 8 a. m.

Tiger Track Team Will Meet California at Berkeley, April 3

THE Tiger track team will meet the University of California team in a dual meet April 3, at Berkeley. This date comes in the Easter holidays. It is the second time that Coach "Bob" Simpson and his team have been honored by an invitation from the University of California.

1926 Track Schedule

Feb. 5, K. C. A. C. indoors.
Feb. 18, Mo.-Kas. indoors, Kansas City.
Feb. 27, Ill. Relays, Urbana.
March 12-13, Valley Conference, Ames.
April 17, Kansas Relays, Lawrence.
April 24-25, Drake Relays, Des Moines.
May 1, Nebraska, Lincoln.
May 8, Washington at Columbia.
May 15, Kansas at Columbia.
May 21-22, Valley meet at Ames.

Tiger track prospects for 1926 are excellent with a few uncertainties. Fifty-one candidates, including a dozen lettermen, are working out daily on the Rothwell Gymnasium board track, but eight of the thirteen stars who wrested the Valley title from Nebraska last spring are no longer in school.

Coach Bob Simpson's particular worry is the quarter-mile. There is only one veteran 440 man, Johnson, in the entire squad, and at least six dependable performers are needed for the event and the

relay. The team is also rather weak in the hurdles because of the failure of Keeble and Cunningham to return this year.

The weights, pole vault and broad jump will be Missouri events in every meet unless injuries and the mid-year examinations exact an unexpected toll. Captain Doss Richerson, greatest of Tiger weight stars, is expected to shatter his own Conference marks; Kenneth Lancaster, who tied for first in the pole vault at the national meet at Chicago last season, is in great shape, and Tom Bransford who defeated Poor, the great Kansas Olympic jumper last year, is back.

Prospects are fair in the sprint and distance events. The half-mile has almost a dozen aspirants.

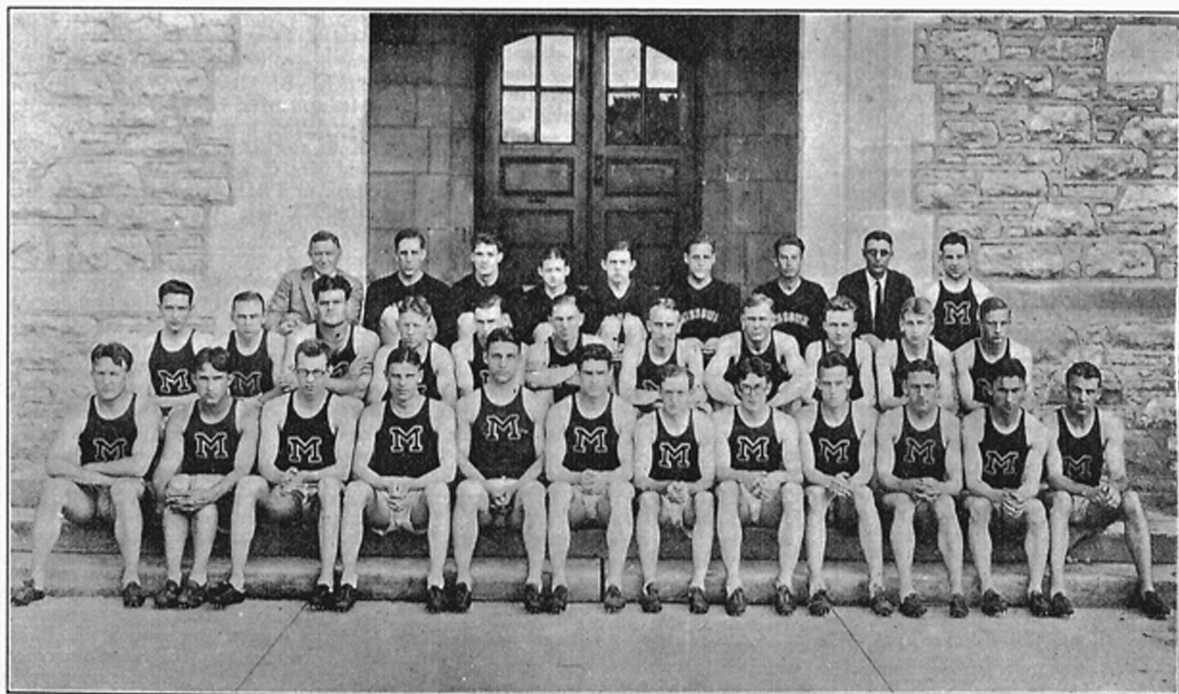
Outstanding veterans on the squad this year in addition to Richerson, Bransford and Lancaster include: Farley, Johnson, Reams, Casteel and Dysart, sprinters; Perdue, Moullec, Ponder and Coggins in the half mile; Matthews in the mile; Steele in the two-mile; and Stuber in the hurdles.

Notable among the sophomore material which will be eligible for the first time this spring, are three Kansas City sprinters—Thelen, Grantello and Daniels. All three are rounding into shape rapidly and are expected to bolster the team considerably in the quarter-mile. Kansas City also contributes a distance star, Lewoneski,

to the team this year.

Sprint candidates include: R. B. Baxter, St. Louis; Irvin Beard, Puxico; Wynne Casteel, Columbia; James Castle, St. Joseph; Bert Clark, Chillicothe; Cecil Coggins, Columbia; W. N. Crumpler, Independence; Frank Daniels, Kansas City; Wm. Dysart, Savannah; E. N. Edington, St. Louis; Kent Farley, Nevada; Sam Gorman, Kansas City; Chas. Grantello, Kansas City; Byron Hargrove, Mt. Vernon; J. A. Johnson, New London; J. A. Laws, Bunceton; B. K. Miller, Keytesville; C. J. Miller, Edina; Barney Reams, Trenton, Lloyd Sessions, Okmulgee, Okla.; Edward Thelen, Kansas City; and Sam Whiteman, Richmond.

Distance men number: Dick Griffin, Mineral Wells, Tex.; E. F. Hanebaum, Carrollton; R. W. Harper, Steele; H. H. Kibler, Eldorado Springs; Dan Landau, Hannibal; O. G. Lewellen, Lakenan; John Lewoneski, Kansas City; Tom Mahoney, Dallas, Tex.; Jack Matthews, Gower; Clifford Perdue, Albany; H. R. Ponder; Bertrand; John Rush, Marshfield; R. V. St. Clair, Humphreys; Chas. Steele, Chillicothe; Stanley Vallet, St. Louis; and Maurice Moulder, Kansas City. Special event performers include: Captain Doss Richerson, Denison, Tex.; Tom Bransford, Lonoke, Ark.; C. W. Crumley, Ft. Madison, Ia.; Gordon Fitch, Plattsburg; G. S. Gill, Virginia, Ill.; Kenneth Lancaster, Kansas City; E. J. Lawton, Brookfield; Hudson McAnelly, Columbia; E. R. Stuber, St. Joseph; James Tarr, Nevada; Ray Walker, Pea Ridge, Ark.; and Hugh Williamson, Columbia.



BOB SIMPSON'S 1925 CHAMPIONSHIP TRACK TEAM

Top row, reading from left to right: Brewer, Athletic Director; Smith, Casteel, Godwin, Vallett, Stewart, Barada, Simpson, Coach; Stuber, Dysart, Lancaster, Richerson, Moulder, Purdue, Walton, Buchner, Reams, Steele, Matthews, Farley, Walsh, Franklin, Cunningham, Kiefner, Etter, Bond, Poage, (Captain), Bransford, Keeble, Johnson, Ponder, and Coggins.

With the Alumni Associations

ST. LOUIS

President Stratton D. Brooks, was the honor guest and the principal speaker at the monthly dinner meeting of the St. Louis Alumni Association on December 11. He spoke on the general subject of alumni activities, reported the progress on the Memorial Union and Stadium campaign and appealed to the alumni to interest themselves more actively in the University.

"The time has come," he said, "when we can no longer finance college education in the United States without contributions from private individuals. Public taxation has just about reached its limit for such purposes, and if we are to keep step with the vast increase in the attendance at our educational institutions, we must interest the people as individuals."

Forrest C. Donnell, A. B. '04, LL. B. '07, attorney of St. Louis, mentioned as a probably candidate for Republican nomination for the United States Senator, was the other speaker. The topic of his address was "The World Court."

Earl F. Nelson, A. B. '04, LL. B. '05, attorney of St. Louis, was re-elected for the coming year to membership on the committee on intercollegiate athletics. The following resolution was adopted, commending John C. Hall, LL. B. '01, president of the St. Louis Building and Loan association, and governor of the 14th District of Rotary International:

WHEREAS, each of the twenty-four clubs of District number 14 of Rotary International propose to provide a scholarship in the University of Missouri.

AND WHEREAS, this program is inspired by and will be carried to a successful conclusion under the leadership of the Governor for the 14th District, Mr. John C. Hall, a loyal alumnus of the University and a member of this association,

AND WHEREAS, this program is but another evidence of the active interest that John Hall has always shown in his Alma Mater,

THEREFORE, BE IT RESOLVED, that the St. Louis Alumni Association of the University of Missouri does express its appreciation of this good program of District number 14 of Rotary International, and the interest shown by it in the University of Missouri; and

BE IT FURTHER RESOLVED that the St. Louis Alumni Association does express its appreciation of the loyal, continued and effective work that John Hall has and is doing for our University.

More than 100 alumni attended the dinner, which was presided over by A. M. Finley, president of the association.

Frank W. Hoffman, secretary, had charge of the arrangements for the meeting.

Arnot M. Finley, president of the St. Louis Alumni Association has announced that the regular weekly alumni luncheon will be held Thursday noon at 12:00

o'clock, instead of on Wednesday as heretofore. Mr. Finley is anxious for all alumni in St. Louis to attend these luncheons and he has issued a special invitation to members of the University faculty, and alumni, to attend the luncheon meetings when they are in St. Louis on Thursday.

These weekly luncheons are well attended. Business and professional questions are discussed as well as matters relative to the University and alumni activities.

The St. Louis alumni have a round table reserved every day for noon luncheon at The Busy Bee Tea Rooms, where alumni gather daily for luncheon. Visiting alumni are welcome.

PITTSBURGH

The annual fall meeting of the Pittsburgh Alumni was held at the Hotel Chatham shortly after the Kansas game. Accounts indicated that in spite of early season reverses Kansas had the best team on the day she played Missouri. However, this seemed to have little influence in the meeting. The spirit and size of the crowd were as good as ever.

It was felt that the winning of two championships in succession meant that the Tigers were playing the most consistent football in the Missouri Valley. The view was expressed by those who had seen football played in various conferences in recent years, that the eligibility rules at Missouri and in the Missouri Valley could not be excelled in the country at the present time. The alumni felt that these were things of real importance and things to be proud of.

We hope to have an opportunity to meet the team in Pittsburgh next fall, and intend to see the Tigers play the Mountaineers at Morgantown. This will be one of the two biggest games of the year for West Virginia.

A short business meeting was held after the dinner. It was decided that a local Alumni Directory should be mailed to all members. The officers elected for the coming year were as follows: President, M. V. Maxwell, B. S. '24; vice-president, E. Querbach, B. S. '06, C. E. '08; secretary, J. F. Calvert, B. S. '22, E. E. '23; treasurer, M. E. Epstein, B. S. '21, M. S., Mass. Inst. of Tech., '22.

Is Assistant to N. T. Gentry

Alexander M. Meyer, who will receive the degree of LL. B. at the close of this semester, was appointed on Jan. 5 as assistant to the Attorney General by Attorney General N. T. Gentry, B. A. '84, Sur. '86, LL. B. '88, and will begin his new duties Feb. 1. He passed the State Bar examination last June. Meyer is 23 years old, member of Phi Delta Phi. His home is in Jamestown, Mo.

MADISON

The Madison (Wis.) Alumni Association held its annual dinner meeting at the University Club December 1. Dr. J. C. Jones, Director of the Memorial Union and Stadium Campaign, was the guest of honor and presented the Memorial projects. The Committee in charge of banquet arrangements was composed of Miss F. Louise Nardin, Professor Hugh A. Smith, Mrs. H. B. Wahlin and A. H. Waite.

"Dr. Jones gave us a very interesting talk," reported A. H. Waite, Secretary of the Madison Association, "he brought many bits of news about the University, members of the faculty and his presentation of the Memorial Union and Stadium projects was most interesting and appealing. The Committee tried to give a touch of 'Old Mizzou' to the occasion by using old gold and black as the color scheme for decorations. Plenty of mums and yellow candles tied with old gold and black ribbon."

The other officers of the Madison Association are: President, Prof. M. F. Guyer; vice-president, Prof. Hugh A. Smith; secretary, A. H. Waite; treasurer, Mrs. A. H. Waite. The following attended the meeting: Prof. Rodney W. Babcock, Ruth B. Baker, Vivian Bresnehen, Mr. and Mrs. H. P. Doole, Paul M. Fulcher, Prof. and Mrs. M. F. Guyer, R. A. McCance, Dean F. Louise Nardin, Mr. and Mrs. C. E. Ragsdale, Marion E. Ryan, Prof. and Mrs. Hugh A. Smith, Mr. and Mrs. A. H. Waite and Miss Esther Weightman.

Dr. Jones in Iowa and Wisconsin.

Dr. J. C. Jones, director of the Memorial Union and Stadium campaign was the guest of honor at the meeting of the Des Moines (Ia.) Alumni Association on November 30. Charles A. Rockwood, A. B. '10, presided at the meeting and had charge of the arrangements. Dr. Jones presented the Memorial Union and Stadium projects and solicited Life Membership subscriptions from each of the alumni and former students present.

President Brooks Again At His Office.

President Stratton D. Brooks is again at his office after a severe attack of influenza during the month of December. He became ill at the meeting which the St. Louis Alumni Association gave in his honor on December 11.

Old Home Almost Destroyed by Fire

The old R. B. Price home on Price Avenue, now owned by Stephens College, was almost destroyed by fire in December.

NEW YORK CITY

By OSCAR E. RILEY, 165 Broadway, Room 1601

Prof. Frank L. Martin of the School of Journalism, and Prof. Chester L. Brewer, Athletic Director, were guests of New York alumni at a luncheon December 30 at the Bankers' Club, 120 Broadway.

The alumni, recalling the Los Angeles game played by the Tigers on Christmas Day, 1924, were anxious to have the Missouri team come East in 1927, since they learned the 1926 schedule had been completed.

President Frank H. Birch was authorized to name a committee to try to arrange a game with Princeton University or the Army. Birch named James A. Jackson, chairman, G. Ellsworth Huggins, Hamilton M. Dawes, W. F. Switzer, and Morris E. Dry.

Brewer told of the winning of the Missouri Valley Championship and of the clean sweep made by the University Track Team last spring.

Professor Martin told of the non-athletic activities of the University. He had come to New York to attend meetings of the National Association of Teachers of Journalism, at which he was a principal speaker. On December 31 he was given a luncheon by former Kansas City Star men at the newspaper Club of New York. On the night of December 30, Brewer, Coach Schulte and Martin were given a dinner in New York by a group of their old New York friends interested in athletics.

Among those at the Banker's Club luncheon, besides those already mentioned were: Paul Arthur, Russell M. Bandy, Henry H. Kinyon, Earle Pearson, Russell S. Sims, Oscar E. Riley, Forrest L. Lyman, and Dr. Bert Munday and son.

The Borough of Queens, at the westerly end of Long Island, is growing in population more rapidly than any other part of New York City and real estate activity there is on a scale comparable to that of Florida. Of course a University of Missouri alumnus is in the game. He is Miles F. Gordon and he is associated with his brother-in-law in the real estate and law firm of Gordon and Sawyer, in the Gordon and Sawyer Building, Astoria, Long Island.

Fred P. Hutchinson of the Western Electric Company, New York City, is now living at 125 Main Street, Orange, N. J.

Thomas S. Hudson, better known to his Kansas City Star friends as Tommy, has removed to 78 Johnson Park, Buffalo, N. Y. He formerly handled publicity for the Shipping Board in Washington, D. C., and before that was associated with the Class Publications at 239 West 39th.

Homer H. Haggard of Vehicular Tunnel Commission, Woolworth Building, has removed to Pt. Marion, Pennsylvania, while Linwood Taft has gone to the College of William and Mary.

A newcomer in New York among the alumni is H. C. McLaughlin, who is now living at 67 West 11th Street, New York City.

Miss Sarah R. Kelman, formerly of

Bellevue Hospital, is now at the Manhattan State Hospital, Ward's Island, New York City.

According to a fellow director of the China Society of America, which has its headquarters in New York City, there are three men who practically make up that Board of Directors, although there are many others on the board. One of the Big Three is a former president for many years of the New York Alumni Association, namely G. Ellsworth Huggins. The company of which he is president is known as Elbrook, Inc., exporters and importers, 120 Broadway.

Bide Dudley, who was a guest of honor at the New York alumni dinner on Dec. 8 carried an account of it in his column in the New York Evening World. He said in part: "Several years ago Homer Croy, who used to walk to school in Missouri carrying his shoes in order to save leather, decided his friend, the writer of this column, could use a square meal. So he went to Europe, stayed two years, came back and notified Frank H. Birch, president of the New York Alumni of the University of Missouri, he was here and ready for a banquet. Mr. Birch arranged the feed and at the behest of Homer, invited his friend, Dudley. The dinner came off and Mr. Birch, as Toastmaster, said, 'I want to introduce Missouri's homeliest native.'

"Mr. Croy arose to speak but was motioned down by Mr. Birch. So the columnist had to do the talking. Mr. Croy followed and soon had the audience in good humor again. It was a great occasion, a fine dinner and the cornfed Missouri girls were pretty. But, after all, why not?"

Columbia Approves Building Program

Columbia citizens have voted and approved of a \$415,000 school building program, which includes a new high school building.



Heads Photo-Engravers' Club

Ben F. Seward, B. S. Ch. '15, Phi Kappa Psi, Alpha Chi Sigma, vice-president and general manager of the Burger Engraving Co., Kansas City, has been elected to the presidency of the Kansas City Photo-Engravers' Club.

KANSAS CITY

Harry B. Walker, 1889-'93, attorney, Commerce Building, president of the Kansas City Alumni Association, has been actively engaged during January in the establishment of permanent downtown headquarters for the Kansas City Alumni Association and in obtaining resources for the provision of a student loan fund and scholarships. The organization has applied for a pro forma degree of incorporation. The Kansas City alumni held a dinner meeting on January 7 at the University Club and the following were elected as board of directors to incorporate the organization: Sam Sparrow, R. B. Caldwell, Shannon C. Douglass, James Gibson, Walton H. Holmes, Jr., W. E. Kemp, Dr. E. Lee Miller, C. P. LeMire, E. S. North, H. K. Poindexter, Wm. N. Rider, George H. Charno. James Wild is secretary and Dupuy G. Warrick treasurer.

An active campaign for members in the organization was started on January 25 and the campaign will end on Thursday night, February 17, at which time the Kansas City alumni are planning to have a big rally meeting announcing the results of the membership campaign and to arouse interest in the Missouri-Kansas dual track meet to be held in Kansas City on the following day.

The University of Missouri Alumnae Association of Kansas City gave their annual Christmas Tea to the girls who were home from the University, on December 29, at the Women's City Club. The Club Lounge was still decorated with a lovely lighted Christmas tree and other greens and poinsettias. A fire in the large stone fireplace added the final touch for a gay and holiday air.

Lucille Meinhoff sang several Christmas Carols which were very much enjoyed by everyone. During the time tea was being served, other appropriate music was played.

Mrs. Herley Daily, Mrs. Marie Rosher Ritchie, Miss Alice Kallam, Miss Elsa Bradley and Miss Margaret Woodson assisted Miss Mary Alice Hudson, Miss Frances Pethick and Mrs. J. E. Wildish, the officers.

Stock Judging Team Places Ninth

The University Stock Judging team won ninth in the annual stock judging contest at the American Royal Live Stock show in Kansas City on November 16. The team is coached by Professor L. A. Weaver of the Department of Animal Husbandry and the team members are Roy Hockensmith, Norwood Benning, Parker Rogers, J. E. Comfort, A. H. Bennett, F. E. Lacey, M. S. Rushton, Bob Baker, and G. F. Boyel. The team visited several important live stock judging farms in Missouri and Kansas prior to their contest in Kansas City. The team placed tenth in the world's greatest live stock judging contest in Chicago on Nov. 28, with a score of 4247 out of a possible 5000.

The Missouri Alumnus

Established 1912



R. L. (BOB) HILL, Editor and Manager

Officers Of The University Of Missouri Alumni Association.

Frank B. Rollins, LL. B. '11, Columbia, President. G. E. Huggins, B. L. '98, New York City, First Vice-president. Mrs. Chas. Hebbard, B. S. in Ed. '14, A. M. '19, Joplin, Mo., Second Vice-president. R. L. (Bob) Hill, B. S. in Ag. '12, M. S. '13, Columbia, Secretary. S. F. Conley, A. B. '90, Columbia, Treasurer.

Board of Directors composed of representatives of Alumni Associations of Divisions in the University; Agriculture, H. H. Krusekopf, Columbia, Mo.; Engineering, L. M. Defoe, Columbia; Law, Kenneth Sears, Columbia; Education, F. H. Barbee, Kansas City; Arts, Frank Chambers, New York City; Journalism, J. Harrison Brown, Mexico; Business and Public Administration, Royal D. M. Bauer, St. Louis; Medicine, Dr. A. W. Kampschmidt, Columbia; Graduate, Ralph Watkins, Columbia.

Subscription to the Alumnus is \$3 a year. Life Subscription is \$45.

Changes of address should be received by the Missouri Alumnus before the fifteenth of the month to insure prompt delivery of the magazine for that month.

Checks, drafts and money orders should be made payable to the Missouri Alumnus and all business correspondence should be so addressed. Address all news items to the Managing editor of the Missouri Alumnus, 114 Jesse Hall, Columbia, Mo.

Should a subscriber wish to discontinue his subscription, notice to that effect should be given before its expiration. Otherwise it is assumed that a continuance of subscription is desired.

Member of Alumni Magazines Associated.

PAY YOUR PLEDGES

Alumni and former students have been commended for the part they played in subscribing almost a million dollars to the two worthy Memorial projects, the Union and the Stadium. And rightly so. To everyone who subscribed, the University owes a debt of gratitude. Their liberality and loyalty is now taking on substantial form on the campus at the University. The Memorial Tower is rapidly nearing completion. This will be one of the most outstanding pieces of Gothic architecture in the world and will prove to be an attraction for thousands. As soon as the Tower is completed work will be started on the wings of the Union. Work on the Stadium was started just a few hours after the contract was awarded, and we all marvel at the progress that is being made. Prompt payment of pledges will enable rapid progress on the Memorial Union and Memorial Stadium.

NEW UNIVERSITY COURSE

A course in ceramic engineering will be established at the School of Mines and Metallurgy at Rolla as soon as funds are available for this purpose. The clay manufacturing concerns in the state have already pledged their whole-hearted cooperation. They want to train men to go into their factories and offices and in their sales departments. They want these men to be trained technically along clay lines. The project is a good one.

Diapore clay has very high heat resisting qualities higher than the very best

flint fire clays. It makes what is known as a super fire-brick or a high alumina fire brick. It is distinctively a Missouri product, being mined nowhere else in the United States on a successful commercial basis. It is of fairly recent discovery even in Missouri.

It is to be hoped that the course in ceramic engineering will be established without delay.

1926 Reunions

Classes holding reunions at Commencement in 1926 are:

1924	
1915	
1914	
1913	
1912	
1896	30th Reunion
1895	
1894	
1893	
1877	
1876	50th Reunion
1875	
1874	

The members of these classes should make arrangements now to attend their class reunions in June, and to participate in the Commencement exercises.



Mr. and Mrs. Herman H. Mecker, 4946 Devonshire Avenue, announce the arrival of a future Missouri Alumna, Mildred, who was born October 4th, 1925. Little Mildred should be ready to enter the University about three years after her brother, Robert Mecker, Jr., who was three years old December 26th. Their picture will appear in a subsequent issue.

H. H. Mecker, B. S. in Education, 1913 is principal of the Patrick Henry School. He is a staunch believer in the movement to underwrite the college education of future American citizens, having provided an educational plan for both of his offsprings through Ernest Staude, '15, "See Me and Die Laughing," of the Equitable of New York, 501 Equitable Bldg., St. Louis.

Edward E. Kite, LL. B. '07, lawyer, St. Francis, Kansas, and Mrs. Kite, announce the birth of a son Henry Wendell, on December 21.

William Harrison Maclay, B. S. in C. E. '11, Sigma Alpha Epsilon, and Mrs. Maclay, formerly Miss Eleanor Adella Asdale, A. B. '14, 3633 Overbrook, Dallas, Texas, announce the birth of a son William Harrison, Jr., on November 5.

James R. Bryant, A. B. '13, attorney, 7 S. Dearborn Ave., Chicago, and Mrs. Bryant formerly Miss Elizabeth Sampson, announce the arrival of a son James R. Jr., on November 13.

Born on November 24, 1925, to Prof. and Mrs. John Shapley, 813 Park Avenue, New York City, a daughter, Ellen. Dr. Shapley is professor of Medieval art, New York University, Washington Square, New York City. Mrs. Shapley, formerly Miss Fern Rusk, also is a graduate of the University and an author of note in the world of art.

J. D. Hull, Jr., B. S. in Ed. '20, A. M. '23, Chicago, Kappa Alpha, Phi Delta Kappa, Glee Club, principal of the senior high school, Springfield, Mo., and Mrs. Hull announce the arrival of a daughter Nancy Susan, 7 lbs., 4 oz., on December 28.

H. Harper Moulton, B. S. in Ag. '16, Sigma Nu, Mystical Seven, President of Ag. Club, Gamma Sigma Delta, Life Insurance business, Chicago, and Mrs. Moulton, formerly Miss Clara West of Mobile, Ala., announce the birth of a son, Frank Lewis, on December 30, at their home 626 Forest Ave., Glen Ellyn, Ill. Their other child, Harper West, was born on July 5, 1922.

S. T. Simpson, B. S. in Ag. '12, and Mrs. Simpson, formerly Miss Mildred Norris, A. B. '12, B. S. '13, Chi Omega, announce the arrival of a daughter at their home, 305 College Avenue, on January 5. The little girl has been named Helen Frances.

H. Charles Cox, B. S. in Ag. '13, and Mrs. Cox, formerly Miss Frieda Stapel, former student of Rockport, and sister of John C. (Jawn) Stapel, announce:

This is Station
C-O-X

Rock Port, Mo.

Announcing

JOHN HENRY

Dec. 6th. 8 lbs. Ringside

America's Youngest Basso

Who will entertain for a few years. His first selection, a beautiful love song, entitled "Bla-Bla-Bla," while he plays on the linoleum.

Signing Off—

H. Charles C-O-X Frieda S.

Announcers

Captain Wm. Edward Galligan, B. S. in Ag. '25, 2008 Woodland Ave., Kansas City Mo., and Mrs. Galligan, formerly Miss Jessie Terry, former student '15-'17, announce the birth of a son, Jerry Edward, at their home on December 18. Captain Galligan is adjutant of the 128th Field Artillery, Missouri National Guard.

James O. Helm, A. B. '23, student at the Rush Medical College, Chicago, and Mrs. Helm, formerly Miss Mary Armstrong, '16-'20, announce the birth of a daughter, Mary Geraldine, on December 17.

Dr. Frank J. Brandenburg and Mrs. Brandenburg, B. J. '18, formerly Miss Lenore P. Watts, announce the birth of a daughter, Rita Lenore, at their home, 1208 South Lewis Place, Tulsa, Okla., on November 25.

(Now page 142, please)

TO THE MEMORIAL UNION AND STADIUM SUBSCRIBERS:—

You made a splendid record in the January payments and we had the satisfaction of issuing more certificates of paid up life memberships than ever before. Because of your generous response to our appeal, the Board of Curators felt justified in letting the contract on the last unit of the Memorial Tower and this beautiful structure will soon be completed.

Work is progressing on the Memorial Stadium and the contractor is pushing the work along as rapidly as the weather will permit.

Some of you are still in arrears. Will you not make a special effort to pay at once at least a part of what you owe? Without your generous help, we cannot complete your Memorials.

With all good wishes for 1926, I am

Very truly yours,



Campaign Director.



Work on the stadium is going on in earnest. Three shifts of men are employed. This view is from the south end of the ravine looking toward the golf course.

BIRTHS

(Continued from page 140)

Stanhope T. Bryant, '18-'19, and Mrs. Bryant, formerly Miss Sarah V. Steenbergen, of Columbia announce the birth of a son on December 10.

Earl S. Dysart, '10-'12, and Mrs. Dysart, formerly Miss Jessie Vivian Kemper, '16-'20, 1414 Walnut Street, announce the arrival of a son on December 9.

Mrs. Wm. H. Reed, Jr., formerly Miss Rosebud White, A. B. '23, and Mr. Reed Wellsville, Mo., announce the arrival of a son, Wilmer H. Reed, III on September 24, 1925.

Claude E. Stephens, B. S. in Ed. '17, and Mrs. Stephens, formerly Ruth Ellis Douglass, '12-'13, announce the birth of a son, C. E. Stephens, Jr., on November 8, at their home in St. Louis.

Mrs. Byron T. Shutz, formerly Maxine Eleanor Christopher, A. B. '23, Kappa Kappa Gamma, and Mr. Shutz of 5131 Wyandotte, Kansas City, Mo., announce the birth of a daughter, Eleanor, on November 24.

Elmer A. Soderstrom, B. J. '23, Manager of the Columbia Evening Missourian, and Mrs. Soderstrom, B. S. in Ed. '21, of 316 South Garth Avenue, Columbia, announce the birth of a son on November 9. Mrs. Soderstrom was formerly Miss Helen Morse.

Walter Morris Dinwiddie, LL. B. '09, and Mrs. Dinwiddie, formerly Margaret Carter, A. B. '12, Alpha Phi, announce the birth of a daughter, Margaret, on December 19. They have one other child, a boy. Mrs. Dinwiddie is the sister of Mrs. Herley Daily of Kansas City.

Cleo C. Wiggins, B. S. in Ag. '12, A. M. '13, Ph. D. '15, QEBH, Sigma Xi, Gamma Sigma Delta, professor of Horticulture, University of Nebraska, and Mrs. Wiggins, formerly Martha Chinn, B. S. in Ed. '13, A. B. '14, announce the birth of a son, Donald, on July 14, 1925. Their other child, Samuel, is three years old.

Stanley Andrews, B. J. '21, Acacia, member of the Debating Team, guard and tackle on the 1920 football team, editor of the Eldorado (Ark.) News, and Contryman's News-Times, and Mrs. Andrews, formerly Florence B. Cox, of Sedalia, '19-'20, announce the birth of a daughter, Florence Walker, at their home on November 17.

Carroll H. (Happy) Cowan, '16-'20, Phi Kappa Psi, TNE, Chi Chi Chi, general manager, Cowan Brothers Lumber Co., and Mrs. Cowan, formerly Miss Corinne Mackey, A. B. '22, B. J. '23, Pi Beta Phi, Theta Sigma Phi, Zeta Sigma, announce the birth of a son on November 29 at their home, 1700 Government Street, Mobile, Ala.

James B. Steiner, LL. B. '12, and Mrs. Steiner, announce the arrival of a son, Eugene, at their home, on November 12, 4333 Shaw Avenue, St. Louis.

Charles Horace White, A. B. '14, Vice-President of the Bank of Seymour, and Mrs. White announce the arrival of a daughter, Mary Nelle, on December 9.

Charles W. Keller, Jr., '18-'22 and Mrs. Keller announce the arrival of a son on December 10. Mr. Keller is now with the Backer National Produce Newspapers at Minneapolis, Minn.

Dr. E. Eugene Brown, A. B. '16, A. M. '18, instructor in physiology '17-'19, M. D. Washington University '19, Phi Beta Pi, Gamma Alpha, and Mrs. Brown formerly Miss Juliet Miller Green, School of Nurses '18, announce the birth of a daughter, Dorothy Jean, on May 19, 1925.

Alvin J. Accola, A. B. '15, E. E. '17, Sigma Chi, Phi Beta Kappa, Tau Beta Pi and QEBH, engineer, care Andres and George Co., Central P. O. Box F 23, Tokyo, Japan, and Mrs. Accola, formerly Miss Katharine Mize, A. B. '15, B. S. in Ed. '17, Kappa Kappa Gamma, announce the birth of their second child, a daughter, Rose Mary, on October 31.

Joseph C. Elliff, A. B. '14, B. S. in Ed. '15, son of Prof. and Mrs. J. D. Elliff of Columbia, on the advertising staff of the Saturday Evening Post, 1101 Home Insurance Building, Chicago, Ill., and Mrs. Elliff, formerly Miss Harriett V. Bell, A. B. '19, Kappa Alpha Theta, announce the birth of a son on November 4 at their home, 2201 Sherman Avenue, Evanston, Ill.

John Crosser, B. S. in Ag. '20, Acacia, merchant of Bloomfield, Mo., and Mrs. Crosser, formerly Miss Katharine Buck, announce the birth of a daughter, Carol, at their home on November 7. Mrs. Crosser formerly attended Ward Belmont, William Woods and Glen Eden. Mr. Crosser managed the Farmers Fair in 1920, was a member of the dairy judging team, and organizer of the "Ruf Nex."

J. Harrison (Brownie) Brown, B. J. '14, QEBH, Mounds, Sigma Delta Chi, Kappa Tau Alpha, Sales and Advertising Manager, A. P. Green Fire Brick Co., Mexico, Mo., and Mrs. Brown, formerly Miss Bernice C. Fairley, announce the arrival of J. Harrison Brown, Jr., on December 6 at their home. Ever since that time the football coaches of the country have been in communication with the Browns in an effort to sign up the Junior member of the firm as a prospective quarterback as of the team of 1945, for according to J. Harrison Brown, Sr., the junior member is already a member of the mythical All-American. Junior is the second child. The daughter, Marjorie, was three years old on December 28.

Mr. Brown has been president of the Audrain County Alumni Association and was the first president of the Alumni Association of the School of Journalism.

L. F. Wainscott, B.S. in Ag. '23, county extension agent, and Mrs. Wainscott, formerly Miss Helen Le Mert, '18-'22, of Kingston, Mo., announce the arrival of a daughter, Jane Frances, on December 2.

Arlie Glenn Capps, B.S. in Ed. '16, A.M. '17, Phi Delta Kappa, professor of education at the University, and Mrs. Capps, formerly Miss Ruby Belle Barnes, '15, announce the arrival of a daughter on December 7.



Florence Fuller Hyde, born April 20, 1925, and her mother, daughter and wife of Lawrence M. Hyde, A. B. '14, LL. B. '16, attorney of Princeton, Mo.



Foster Leonard Dennis—age 3 years and Roger Keithley Dennis—age 8 months sons of Dr. and Mrs. Foster L. Dennis, of Sylvan Grove, Kans. Doctor graduated from M. U. in '17—took summer work at M. U. in '18 and '19—took his B. S. at St. Louis University and his M. D. at Jefferson Medical College, Philadelphia, Pa. He won his "K" on the Jayhawker football team and his gold football at St. Louis University. He is a member of Kappa Sigma and Phi Chi. Mrs. Dennis formerly Hazel B. Butts, A. B. and B. S. in '19, member of Chi Omega.



John E., born June 11, 1914, Frank A. Junior, January 12, 1925, and Susan Beth, born March 15, 1921, children of Frank A. Muth, B. S. in C. E. '10, superintending engineer, New Orleans (La.) light house service, and Mrs. Muth, formerly Miss Allie Frank, former student, King City, Mo. Mr. Muth is president of the New Orleans alumni association and was responsible for the unusual success of the meeting of the alumni in connection with the Tulane-Missouri game. Mr. Muth is now reviewing the technical points of the new municipal building code for New Orleans.



Marion Elizabeth 1913, Alice Ann 1916, daughters of Marion Sylvester Dooley, A. B. '07, and Mrs. Dooley, formerly Miss Elizabeth Jadwin, '06-'07, of 420 Marshall St., Syracuse, N. Y.

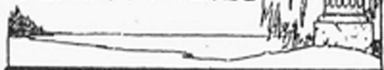


Herman B. Hill, Jr., age 11, Frances Hill, age 6, Dorothy Jo Clark, age 4, James Bennett Clark, Jr., age 2, Ann A. Hill, age 1, children of four former Missouri University students all living in Shamrock, Tex. H. B. Hill, A. B. '10, LL. B. '12, and Mrs. Hill, formerly Miss Opal Clark, student '08-'11. J. B. Clark, A. B. and LL. B. '14 and Mrs. Clark, formerly Gretchen Hanson, student '11-'13. Mr. Clark and Mrs. Hill are brother and sister. Both Hill and Clark are practicing law at Shamrock, Tex., and both were Phi Delta Phis. H. B. Hill wrote, "I want to compliment the Alumnus. It has many notes of the graduates and former students which is an interesting feature to all of us. When I once get my nose between the pages I read it from cover to cover without looking up and it is almost like being in company with some twenty-five or thirty of the students at Missouri about fifteen years ago. Keep the good work going and get all the reports you can from the old students."



Laura Tichenor, born May 26, daughter of William Frank Etz, B. S. in Ag. '20, Kappa Sigma, Mystical Seven, Wilson & Co., 41st Street and Ashland Ave, Chicago, Illinois, and Mrs. Etz, formerly Miss Laura Tichenor of Macon, Mo.

DEATH NOTES



Samuel H. Kelley

Samuel H. Kelley, who is said to have attended the University of Missouri in 1878-79, Phi Delta Theta, District Attorney and Tax Agent for the New York Central Railroad in Michigan, died December 17, in St. Petersburg, Fla. Mr. Kelley was born in Grant County, Ind., in 1861. In 1880 he went to Washington, D. C., where he was adjudicator of claims in the second auditor's office during Arthur's administration, and while there was graduated from Columbia Law School. Resigning from the treasury department in 1885, he went to Wakeeney, Kan., to become chief clerk in the United States Land Office. Six months later he moved to Scott City, where he practiced law and edited a newspaper. In 1889 he moved to St. Joseph, Mo., to practice law with his father.

Faynee McLenden

Miss Faynee McLenden, former student '19-'21, of Duncan, Okla., was killed on December 12, when a train struck the automobile in which she was riding. The accident happened two miles south of Duncan. An aunt riding with her was also killed.

Wm. G. Busby

Wm. G. Busby, 52 years old, former student in the School of Law 1892, former Chairman of the State Public Service Commission and former State Senator, died on January 4 at his home in Kansas City, following the third stroke of paralysis. He had been in ill health for nine months. He was the father of the late Wm. G. Busby, Jr., LL. B. '22, who died in Denver, on July 23, 1924.

The Rev. G. W. Hatcher

The Rev. G. W. Hatcher, 79 years old, died of pneumonia at the Boone County Hospital in Columbia on January 13. Mr. Hatcher came to Columbia in 1892 as pastor of the First Baptist Church and was widely known by hundreds of alumni and former students all over the country. Burial was in Carrollton, Mo.

Tom Powell Is President

of 1926 Farmers' Fair

Tom F. Powell of Odessa, Mo., has been elected manager of the 1926 Farmers' Fair, the most outstanding stunt in the United States. A. T. Mullins of Mt. Vernon, Mo., was elected assistant manager; Carl Ross, Kennett, Mo., secretary-treasurer, and Millard Rushton, Columbia assistant secretary-treasurer. The exact date of the Farmer's Fair will be announced later.

One of the features of the 1926 Farmers' Fair will be the effort to have as many as possible of the Farmers' Fair officers of the past return for the big event.

**Quarles-Hanger**

Miss Warren Quarles and Oliver Hanger, '20-'23, Sigma Alpha Epsilon, both of Kansas City, were married on Dec. 30.

Reid-O'Bannon

Miss Lois J. Reid, of Hinton, and S. P. O'Bannon, B. S. in Eng. '24, General Electric Company, Schenectady, N. Y., were married in November. Mr. O'Bannon is a member of Tau Beta Pi.

Milligan-Finley

J. L. (Tuck) Milligan, LL. B. '14, of Richmond, Mo., Democratic representative in Congress for the third district married Mrs. Mary Kate Finley of Liberty on November 25.

Henson-Masters

Miss Isabel Henson, '19-'20, Kappa Kappa Gamma, of Kansas City, and Isabel George Emmet Masters of Sioux Falls, S. D., were married on December 12.

Saltmarsh-Baltis

Miss Louise Saltmarsh and Russell Baltis, '22-'23, Beta Theta Pi, both of Kansas City, were married on November 28. They will make their home in Kansas City.

Watson-Portwood

Ila M. Watson, '22-'24, of Columbia and Carl Portwood, of Hallsville, were married in early November. Mr. Portwood is now employed at Nowell's Grocery store.

Orton-Johnson

James T. Orton, B. S. in E. E. '25, and Miss Mozelle Johnson were married on November 15. Mr. Orton is now connected with the Southwestern Bell Telephone Company, St. Louis.

Rice-White

Miss Alma Rice, former student '23-'24, Campbell, Mo., and Harold McClare White, were married on October 29. They will be at home in Buffalo, Mont.

Mize-Jenkins

Miss Caroline Mize, '23-'24, Kappa Kappa Gamma, of Atchison, Kans., and Dr. James Thomas Jenkins of Peoria, Ill., were married on November 28. They will make their home in Peoria, Ill.

Hammond-Sinclair

Ralph W. Hammond, '18-'20, Sigma Chi, assistant manager of the Goddard Wholesale Grocer Co., Jefferson City, Mo., and Miss Catherine Sinclair were married on December 9.

Bransford-Barton

Thomas J. Bransford, a senior in the School of Journalism, Kappa Sigma, and Natalie Barton, a junior in the University, Delta Gamma, were married in Kansas City on November 21. They will remain in school.

Halley-Lippincott

Charles Robert Lee Halley, A. B. '18, M. D. Johns Hopkins '22, Phi Beta Kappa, Physician, Johns Hopkins Hospital, Baltimore, Md., and Miss Eleanor Beauchamp Lippincott, were married on October 31. They will be at home at 1506 Bolton Street, Baltimore.

Sutton-Semple

Miss Dorothy Sutton, '21-'24 and William Robert Semple of Los Angeles were married on November 24. Mrs. Semple was chosen queen of the St. Patrick's Ball in 1924, and took a prominent part in the work of the Workshop while she was in school.

Anderson-Miller

Newton H. Anderson, B. S. in Eng. '25, of Ferguson, Mo., and Miss Leona Miller, B. S. in Ed. '23, of Columbia, were married in November. Miss Miller taught for two years in the physical education department of the University. Mr. Anderson now has a position in St. Louis.

Aldrich-Reed

G. Frank Aldrich, A. B. '24, Phi Gamma Delta, Scabbard and Blade, geologist, Skelly Oil Co., Tulsa, Okla., and Miss Marion H. Reed, B. J. '24, Phi Mu, were married on October 19. Mr. Aldrich wrote "The Alumnus is a great creation, and I boast to men of other schools of the Missouri Alumnus."

Dunlap-Eberly

Ray (Shorty) Dunlap, Engineer '09, Division Engineer, State Highway Commission, 321 Frisco Bldg., Joplin, was married on October 27 to Miss Mildred Adele Eberly.

Mr. Dunlap is a member of Quo Vadis and gained prominence as a member of the Glee Club and band.

Page-Miller

Earl M. Page, B. S. in Ag. '21, Delta Tau Delta, now assistant professor of horticulture in the University, and Miss Virginia Miller of Webster Groves, have announced their engagement. Miss Miller was educated at Washington University and is a member of Pi Beta Phi. The wedding will take place in January.

Smith-Taylor

Oliver M. Smith, '18-'21 Sigma Nu, Webster Groves, Mo., and Miss Esther Taylor of Bismark, N. D., were married on January 2. Miss Taylor attended the University of Minnesota and is a member of Alpha Chi Omega. Mr. Smith has been located in Minneapolis for the last four years.

Sayre-Parish

Miss Mary Sayre, now enrolled in the University, of New London, Mo., and Havner H. Parish, of Kansas City, were married on November 9. Miss Sayre is a member of Delta Gamma sorority and will remain in the University until she receives her degree. Mr. Parish attended the University of Kansas and is now traveling for the Balfour Jewelry Company.

Towney-Bozarth

Miss Madge Bozarth, A. B. '24, Columbia, and Earl Towney Perry, were married on December 29 at Mexico. They will make their home on a farm near Florida, Mo.

Wilson-Eakin

Donald Francis Wilson, '14-'17, care The National City Co., 630 Boatmen's Bank Bldg., St. Louis and Miss Margaret Eakin, also of St. Louis, were married on January 16.

Hausman-Dygert

Miss Ruth Hausman, B. J. '24, Chi Omega, of St. Louis, and Harold B. Dygert of Pittsburgh, Pa., have announced their engagement. He is an alumnus of the University of Pittsburgh and a member of Phi Delta Theta. No definite date has been set for the wedding.

Van Dyne-Stewart

Mr. Charles M. (Chase) Van Dyne, A. B. '25, Beta Theta Pi, a member of the football teams of '22-'23 and '24, of Sedalia, Mo., and Miss Myrtle Stewart, '22-'24, Kappa Alpha Theta, of St. Louis, were married on December 14.

Mitzel-Grathwohl

Miss Corene Mitzel, B. S. in Ed. '25, Bunceton, Mo., and Henry Thomas Grathwohl, 19, Billingsville, Mo., were married in December. They will reside on a farm.

Carnahan-Crandall

Miss Gladys Carnahan, A. B. '24, Kappa Alpha Theta, Pine Bluff, Ark., and John D. Crandall, '22-'24, formerly of St. Louis, now of Dallas, Tex., have announced their engagement. Mr. Crandall is a member of Beta Theta Pi. They will make their home in Dallas.

Beaven-Mitchell

Charles Leland Beaven, '10-'12, and Miss Nancy Mitchell, both of Columbia, were married on December 12. They will make their home in Columbia, where Mr. Beaven is employed with the Missouri Motor Co.

Horn-Kassebaum

Miss Helen Horn, '22-'24, Kappa Alpha Theta, and Leonard C. Kassebaum, B. S. in B. A. '23, Sigma Nu, both of Kansas City, have announced their engagement.

Evans-McIntyre

Miss Maude Evans, '16, Phi Beta Phi, of Glenwood Springs, Colo., and Morris S. McIntyre of Kansas City, were married on December 12. They will make their home in Kansas City.

Warren-Allebach

Erma Ruth Warren now a student in the University of Columbia, and Frederick J. Allebach of La Porte City, Ia., were married in Waterloo, Ia., on November 27. Mrs. Allebach is a member of the Delta Gamma sorority and will finish the requirements for a B. J. degree in January. Mr. Allebach is a graduate of Iowa University. They will make their home in Washington, Ia.

Meriweather-Benten

Miss Elizabeth Meriweather, '21-'24, Pi Beta Phi, Kansas City, and F. Ashley Benten, '20-'25, Phi Kappa Psi, also of Kansas City, have announced their engagement.

Hulett-Howie

Miss Ruby Dill Hulett, B. S. in Ed. '22, Chi Omega, of Hallsville, and Millard Howie of Gulfport, Miss., were married on December 24. Miss Hulett has been teaching in the Gulfport high school for the past three years.

Vossbrink-Lyle

John H. Vossbrink, A. B. '24, now a junior in the School of Law, Phi Gamma Delta, Phi Beta Kappa, Phi Delta Phi, Alpha Pi Zeta, Union, Mo., and Miss Vallera Lyle of Camden, were married on January 6. Their address will be Sanford Apartments, Columbia.

Long-Thiehoff

Miss Eleanor Long, A. B. '22, M. A. Columbia University '25, Phi Mu, St. Joseph, and Eldred Victor Thiehoff, A. B. '21, A. M. '22, Alpha Kappa Kappa, Sigma Xi, Jefferson City, have announced their engagement. The wedding will take place next summer.

Pippin-Luther

Dru L. Pippin, B.S. in Ag. '23, Alpha Tau Omega, Alpha Zeta, and Miss Eva Pearl Luther of Marshall, were married in early December. Mrs. Pippin was home economic agent in Saline County and Pippin was the county agricultural agent until a few months ago. They will live on a farm called "Pippin Place" in Waynesville.

Wharton-Brill

Miss Fern Wharton, '24-'25, Cherryville, Kans., and Glenn M. Brill, B.J. '25, Dana Press Club, Delta Upsilon, QEBH, Sigma Delta Chi, Editor '24 Savitar, President '25 Savitar Board, president senior journalists, manager '25 Journalism Scoop, now managing editor of the Sedalia (Mo.) Capitol, were married on December 23.

MacIntosh-Mutch

Miss Mildred MacIntosh, A. B. '24, daughter of Rev. and Mrs. John MacIntosh of Chicago, is engaged to be married to Thomas C. Mutch. No date has been set for the wedding. She is a member of the Kappa Kappa Gamma sorority. Mortar Board, and L. S. V. During her senior year she was president of the Women's Self-Government Association.

Viner-Roos

Harry Viner, A. B. '20, Quo Vadis, Mystical Seven, football '16-'19, basketball, '17-'18, secretary and treasurer National Bond and Mortgage Corporation, Houston, Tex., was married on December 22 to Miss Aileen Danise Roos of Beaumont, Tex. Miss Roos attended school in the East. The groomsmen were J. B. Herndon, Jr., A. B. '20, Hilton Hotel, Dallas; Sam H. Liberman, LL. B. '18, of St. Louis and Wm. Norris Rider, B. S. in Ag. '18, of Kansas City.

Jaffa-Mayer

Miss Rose Mayer, B. S. in Ed. '22, King City, and Benjamin Jaffa of Roswell, N. M., were married on January 7.

Quigley-Marks

Miss Zeldia Marks, Council Bluffs, Ia., and John B. Quigley, LL.B. '24, Zeta Beta Tau, Kansas City, have announced their engagement.

Jesse-Miller

Miss Mildred Miller, Shelbina, and Rhodes Jesse, '22-'23, Pi Kappa Alpha, Mexico, were married on January 16. Mr. Jesse is now connected with the Savings Bank in Mexico.

Dalton-Hall

John M. Dalton, LL. B. '23, Phi Gamma Delta, Phi Delta Phi, City Attorney, Senath, Mo., and Miss Geraldine Hall, of Cardwell, Mo., were married on November 22. Miss Hall attended Stephens College. They will make their home in Senath.

Peabody-Brown

Miss Marjorie N. Peabody, B. J. '21, Delta Delta Delta, and Alpha N. Brown, LL. B. '21, Phi Alpha Delta, Athenaeon, both of Kansas City, have announced their engagement.

Amery-Garten

Miss Alice Winifred Amery, B. J. '25, Zeta Tau Alpha, Norborne, Mo., and Merideth Garten, Graduate School '24, Emporia, Kans., were married on December 30 at the home of the bride's parents.

Sensinstaffer-Riemer

Miss Lillian Sensinstaffer, A. B. and B. S. in Ed. '14, A. M. '24, of Columbia, and Charles J. Riemer, B. S. in Ag. '25, of St. Louis, were married on December 24. They will make their home in Litchfield, Ill.

Baskett-Davison

Dr. E. D. Baskett, A. B. '15, A. M. '16, son of Mr. and Mrs. W. S. Baskett, 11 Allen Place, Columbia, and Miss Janet Elizabeth Davison were married on December 25. They will be at home at 605 South Fourth Street.

Dysart-Bowdith

Ben Robnett Dysart, A.B. '20, M. D. Harvard '23, Phi Mu Alpha, Phi Beta Pi, surgeon, Bellevue Hospital, New York City, and Miss Mary Browne Bowdith of Roxbury, Mass., were married on Dec. 11.

Alexander-Sappington

Miss Susie V. Alexander, '24, and W. Roy Sappington, '20-'21, both of Columbia were married on December 26. Mr. Sappington is now in business with his father at the Central Dairy. They will be at home at 101 Broadway.

Brown-Turner

Miss Ruth Vaughan Brown, B. S. in Ed. '24, daughter of Mr. and Mrs. Fred C. Brown of Columbia, and Duane Turner, '21-'24, also of this city were married in Denver, Colo., on December 24, where they will make their home.

Reed-Reynolds

Miss Kathryn L. Reynolds, B. J. '22, Delta Delta Delta, Gamma Alpha Chi, Zeta Sigma, Caruthersville, and Lyman Reed, Alliance, O., were married on December 28.

Newell-Moore

Whipple S. Newell, '20-'23, Phi Delta Theta, and Miss Carolyn Moore, both of Kansas City, have announced their engagement.

James-Powell

Miss Helen D. Powell, '21-'24, Chi Omega, Odessa, Mo., and Gilbert L. James, B. S. in B. A. '23, Purina Mills Co., St. Louis, will be married on February 12.

Jordan-Van Evera

Russell C. Jordan, '23-'24, and Lois Van Evera, both of Kansas City, were married on January 14. Mr. Jordan was a pledge to the Delta Tau Delta fraternity.

Pate-Gardner

Herbert James Pate, B. J. '25, Alpha Delta Sigma, Lambda Pi Epsilon and Miss Mary Elizabeth Gardner, both of Hobart, Okla., were married on December 24.

Carson-Leach

Miss Ruby Leach, '14-'16, Homestead, Fla., and James M. Carson, Miami, were married on January 3. Miss Leach is Vice-President of the Dade Publishing Co. They will make their home in Miami, where Mr. Carson is practicing law.

Seitz-Schroeder

Miss Mildred M. Schroeder, B. J. '22, Gamma Alpha Chi, instructor in the Manual Training High School, Kansas City, and Harry W. Seitz, also an instructor in the same school, were married on January 21.

Orten-Harris

Miss Zoe Harris, sister of Mrs. Geo. C. Willson, Jr., of St. Louis, B. S. in Ed. '17, Pi Beta Phi, and Prof. M. O. Orten of the School of Mines, Rolla, were married the latter part of November.

Coppedge-Miller

James B. (Jim) Coppedge, A. B. '22, Mystical Seven, Athenaeon, Student Council, secretary-treasurer of the student body, now a lawyer in Tulsa, Okla., and Miss Julia Miller of Kansas City, have announced their engagement. The wedding will take place in February.

Strong-Swain

Miss Virginia Swain, B. J. '22, Delta Gamma, was recently married to Philip Strong of New York. Mr. Strong is working for the Associated Press and Mrs. Strong will continue her work with the Newspaper Enterprise Association.

Thompson-Bohnsack

Miss Maude Ellen Thompson, B. S. in Ed. '22, of Columbia, and Walter A. Bohnsack, of Cape Girardeau, were married on December 28. They will make their home in Cape Girardeau, where Mr. Bohnsack is district representative for the Studebaker Automobile.

Hopkins-Leeds

Miss Ruby Katherine Hopkins and Leon L. Leeds, former student '19-'22, Phi Kappa Psi, were married on November 28.

Harrison-Andrews

Dr. Forrest A. Harrison, A. B. '21, Phi Beta Pi, and Miss Bethel Andrews were married on November 2. They will live in Ardmore, Okla.

Frey-Schooling

Harry Frey, '21-'24 of Lexington, Mo., and Miss Salome Schooling of Boonville, were married on November 15. They will make their home in Boonville.

Neville-Miller

Miss Margaret Neville, A. B. '24, Alpha Phi of Kansas City, and Paul Marion Miller, B. S. in B. A. '24, Phi Gamma Delta, of Sanford, Fla., were married on December 31.

Smith-March

Martin V. Smith, special student '24, Owensville, Mo., and Miss Rella March of Columbia, were married on October 30. They will make their home in Owensville, where Mr. Smith is a member of the high school faculty.

Herrod-Crider

Miss Mabel Herrod, '21, Alpha Phi, of Webb City, Mo., and Merrill G. Crider, B. S. '22, Kappa Sigma, of St. Louis, were married on October 31. Mr. Crider is with the Purina Mills in St. Louis, where they will make their home.

Bassett-Shafer

Miss Mildred Mary Bassett, former student '24, Kappa Alpha Theta, of O'Fallon, Ill., and Dr. Otho Shafer of Belleville, Ill., were married in early November. They will reside in East St. Louis, where Dr. Shafer practices dentistry.

Curtin-Howard

Miss Sylvia R. Howard, a junior in the University, Clarksburg, W. Va., Alpha Phi, and Henry W. Curtin, with the Curtin-Frye Motor Co., Columbus, O., were married on January 5. Mr. Curtin is a graduate of Washington and Lee University. They will make their home in Columbus.

Crowe-Latimer

Vincil C. (Vippy) Crowe, J.L. B. '21, assistant attorney general for Oklahoma, Oklahoma City, was married on November 19 to Miss Katherine Frances Latimer of Oklahoma City.

Mr. Crowe is a member of Acacia, Delta Sigma Rho, Phi Alpha Delta and Athenaeon. He was formerly attorney for Garfield County at Enid.

Wilson-Eakin

Donald F. Wilson, forestry '18, Sigma Nu, with the National City Company of New York, with office at 630 Boatmen's Bank Bldg., St. Louis, is to be married in February to Miss Margaret Eakin, daughter of Mr. and Mrs. J. R. Eakin of 56 Kingsbury Place, St. Louis. Miss Eakin is a graduate of Mary Institute, Dana Hall and the Finch School.

Angell-Leggett

Miss Helen Angell, '24, Delta Gamma, Savitar Queen, daughter of Mrs. M. C. Angell of Columbia, and Joseph Palmer Leggett, '22-'24, Sigma Nu, Carthage, Mo., were married on December 21.

Hill-Eichelsdorfer

Miss Mary Hill, A. B. '19, Phi Beta Phi, of Kansas City, and Lieut. Robert M. Eichelsdorfer, U. S. Cavalry, were married on November 7. They will be at home at Washington Barracks, Washington, D. C.

Hollingsworth-Murray

Miss Mozelle Hollingsworth, a student in the College of Arts and Science, and Lotis Murray, a student in the School of Medicine were married in late November. They will continue their work in the University.

Davidson-Leach

Miss Merle Adalyn Davidson, a student in the University, Columbia, and George Elston Leach, B. S. in B. A. '25, were married the latter part of November at the home of the bride's parents. Mrs. Leach will receive the degree of B. S. in Ed. in June. They will make their home in St. Louis where Mr. Leach is connected with the Missouri Pacific Railroad.

WHAT THE
OLD GRAD
IS DOING



Harvey Payne (Griff) Griffin, B.S. in Ag. '09, Sigma Chi, Gamma Sigma Delta, is now operating a ranch in Belgrada, Mont.

Frank Chambers, A.B. '15, attorney, care Cravath and Henderson, New York City, visited in Columbia and the west recently.

H. W. (Tark) Crain, A.B. '10, is with the Albert W. Weinbrenner Shoe Co., Route 7, Decatur, Ill.

Miss Caroline E. E. Hartwig, A.B. '22, B.S. in Ed. '21, M.A. '22, formerly an instructor in the Central High School, St. Joseph, is now enrolled in the University.

Murray N. Whitehead, B. J. '22, is a member of the firm Neher-Whitehead & Company, 1627 Locust St., St. Louis, which gives counsel and service to the dairy industry.

Miss Gladys-Mai Davidson, B.J. '25, Phi Mu, 619 N. 17th Street, Ft. Smith, Ark., sent in her check for the Alumnus and wrote, "I feel I can't afford to be without the Alumnus."

Hubert S. (Lefty) Pruett, former Tiger pitcher, southpaw pitcher who gained fame for his ability to strike out Babe Ruth, has been sold by the St. Louis Browns to the Oakland (Cal.) club of the Pacific Coast League.

Harry L. Elsner, B.S. in Ag. '11, is manager of the Sweet Springs Produce Co., Marshall, Mo.

Arthur R. Eitzen, B.S. in C.E. '04, is living at 6819 Cornell Ave., Chicago, Ill. He married Miss Florence D. Sheetz in 1912.

Miss Hazel E. Collins, A.B. and B.S. in Ed. '23, is now living at 521 West 112th St., Apt. 23, New York City.

Carl Gillespie, B.S. '14, Farm House, is teaching Vocational Agriculture at Albany Mo. He married Miss Elfa May Smith in 1916.

Warren Glenn Fowler, B.S. in Eng. '19, C.E. '20, Tau Beta Pi, is an Engineer, Missouri State Highway Commission, Jefferson City, Mo.

Holmes Hall, '99, is an attorney, 4th and Ohio Sts., Sedalia, Mo. Mr. Hall was state Senator '09-'13, and referee in bankruptcy '11-'23. He played quarterback on the football team of '96.

Norman D. Twichell, A.B. '22, Beta Theta Pi, Scabbard and Blade, is a real estate broker, with the firm Bradshaw-Sadler-Twichell, Inc., Fort Lauderdale, Fla.

Harvey Louis Tedrow, B.S. in M.E. '11, Sigma Chi, is with the Wellington Mines Company, Breckenridge, Colo. He married Miss Margaret Snowden of Los Angeles, Calif., in 1917.

L. E. Cline, B.S. in Ag. '05, M.S. '07, is associate agriculturist, office of Demonstrations on Reclamation Projects, U. S. Department of Agriculture, Fallon, Nevada.

George E. Bates, A.B. '23, A.M. '24, Alpha Kappa Psi, Phi Beta Kappa, Alpha Pi Zeta, Alpha Zeta Pi, Degree with distinction at Harvard, assistant dean in the Harvard School of Business and Public Administration, from which he was graduated last June, has been awarded the first Emery W. Clark Prize of \$100 for the best report on retail store management problems.

Chas. L. Mosley, L.B. '82, Pe. B. '89, Farmers and Mechanics Bank, Stanberry, Mo., writes, "Enclosed please find my check for \$3.00 to pay for the Alumnus for the current year. Its coming reminds me of many incidents of my four years at Columbia—from 1878-1882. The appointment of North Todd Gentry to the attorney-generalship also set in motion a train of pleasant memories."

H. F. (Hobe) Williams, B.S. in Ag. '12, Alpha Tau Omega, Gamma Sigma Delta, secretary of the Minneapolis Alumni Association, couldn't resist the temptation to see the championship Tiger team perform at Lawrence. Hobe has been active in the Memorial Union and Stadium campaign and is an alumnus who believes in doing things worth while for the University.

Marion L. Shannon, former student '14-'17, is a salesman, American Law Book Co., 309 McDaniel Avenue, Springfield, Mo.

W. R. Hornbuckle, LL.B. '09, is secretary-treasurer of the Missouri Abstract and Guaranty Company, 915 Walnut Street, Kansas City, Mo.

Florence A. Smith, B.S. in Ed. '19, Kappa Kappa Gamma, is director of sports, department of physical education, Newcomb College, New Orleans, La.

Louise Letts, B.S. in Ed. '14, formerly of Sedalia, Mo., is at Hotel Clayton, Sheridan Road at Clayton Street, Waukegan, Ill.

Paul T. Truitt, B.S. in B.A. '24, formerly of Columbia, is now with Sears Roebuck & Co., with headquarters at Kansas City. His home address is 1030 Benton Boulevard.

Albert Upp Brandt, B.S. in E.E. '99, is an Electrical Engineer, 812 Howard Street, San Francisco, Calif. He married Miss Ruth B. Heck in 1900. They have one son and one daughter.

Walter N. Geery, '07-'11, Acacia, Steinmetz Club, is in the grain and elevator business at Fayette, Mo. He married Miss Sybil Field of Salt Lake City, Utah, in 1916. They have two sons.

John K. (Jack) Rohrer, B.S. in C.E. '14, is civil engineer, Bureau of Reclamation, Guernsey, Wyo. He married Miss Carrie Newell of Mitchell, Nebr., in 1919. They have one son and one daughter.

William Reynolds Paden, B.S. in Ag. '25, Acacia, Alpha Zeta, Gamma Sigma Delta, is assistant in soil Biology, University of Illinois, Urbana.

J. D. Dean, former student '14-'16, Kappa Alpha, is president of the International Hospital Equipment Company, Chemical Bldg., St. Louis, Mo.

Edward B. Smith, B.J. '22, is superintendent, Southern Division, Consolidated Press Association, Evening Star Building, Washington, D.C.

Victor (Vic) Keen, B.J. '22, Kappa Tau Alpha, Phi Gamma Delta, Sigma Delta Chi, is with the Japan Advertiser, Kobe, Japan, Sannomiyacho, 1 Chome.

James K. Hickman, LL.B. '81, is traffic manager, John Waldron Corporation, New Brunswick, N. J. He married Miss Anna E. Woods of Glasgow, Mo., in 1881. They have two sons and one daughter.

Miss Alice Parker, B.S. in Ed. '19, Kappa Kappa Gamma and Delta Theta Kappa, a teacher of English in Westport High School, Kansas City, Mo., visited the University on November 26.

Mark A. McGruder, LL.B. '01, attorney of Sedalia, and candidate for the Democratic nomination for attorney general in 1920 has announced his candidacy for judge of the supreme court. Mr. McGruder represented his district, the fifteenth, one term in the senate in 1917, and was Democratic floor leader in the latter session.

Mrs. M. S. Dooley, former student '06-'07, former Miss Mary Elizabeth Jadwin, is now living at 420 Marshall Street, Syracuse, N. Y.

Robert W. Simons, LL.B. '20, Phi Delta Theta, Phi Delta Phi, is an attorney, Enid, Okla. He married Miss Grace Lucile Gross, B.J. '21, in 1922.

Irwin Raut, A.B. '98, Phi Beta Kappa, is Y.M.C.A. secretary, Granite City, Ill. He recently dedicated a new Y building. He married Miss Florence Lamont of Sedalia in 1905. They have two sons.

Lowell L. Lowery, B.S. in C.E. '09, is farming and teaching school, Route 1, Hot Springs, Ark. He married Miss Bessy May Garnett, B.S. in Ed. '09, in 1910. They have one son and one daughter.

Wentworth Wilder, M.E., A.B. '17, Phi Kappa Psi, is secretary-treasurer, Wilder Manufacturing Co., St. Louis, Mo. He married Miss Sue Pitchford of Scottsville Ky., in 1921. They have one son and one daughter.

Russell L. Dearmont, LL.B. '14, Phi Delta Phi, Mystical Seven, is an attorney, 415 Himmelberger-Harrison Bldg., Cape Girardeau, Mo. He married Miss Marie M. Oliver in 1916. They have three daughters.

Thomas Tarlton Railey, A.B. '07, Delta Tau Delta, Phi Beta Kappa, QEBH, is Assistant to General Solicitor, Missouri Pacific Railroad Company, 1116 Railway Exchange Building, St. Louis. He married Miss Emma Mayer in 1920.



Amanda Lee Beaumont, B.S. in Ed. '05, Pi Lambda Theta, Alpha Phi Sigma, dean of women, Marshall College, Huntington, W. Va., has just been elected president of the West Virginia State Association of Deans of Women. In 1920-21 Miss Beaumont was instructor in School Supervision here at the University.

Stephens College

(The Junior College for Women)
(The Educational Center of the State)

COLUMBIA, MISSOURI

Fully Accredited as a Junior College by the University of Missouri and other Standard Universities.

Write

JAMES M. WOOD, *President*

THE TIGER CAB CO.

Night and Day Service

PHONE 2300

PHONE 2300

PROFESSIONAL DIRECTORY

VOLNEY McFADDEN

AB. '13, LL. B. '14

Counsellor at Law
277 Broadway
New York, N. Y.

H. E. KEIM, LL.B. '12

DYER & KEIM

Attorneys at Law

American National Bank Bldg.
Enid, Oklahoma

ROSCOE E. HARPER, A. M., LL. B. '20

Attorney and Counselor at Law,
1000-1007 Atlas Life Bldg.,
Tulsa, Oklahoma
Firm: Mason, Honnold,
Carter & Harper

E. Kemper Carter, C. E. '12
Albert R. Waters, C. E. '12

The CARTER-WATERS CORPORATION

Materials of Construction
2049 Main Street, Kansas City, Mo.
Building and Paving Materials

Mandry & Hornback

John S. Hornback, A. B. '16, LL. B. '18
Walt Mandry, LL. B. '17

Attorney & Counsellor at Law

General practice of law, specializing in
Departmental practice.

713 Woodward Bldg. Washington, D. C.

Main 6533 Res. Eddy 8577

GROVER C. HOSFORD

Attorney and Counsellor at Law
721 Fidelity Mortgage Bldg.
Cleveland, Ohio

ERNEST E. TUPES

A. B. and B. S. in C. E. '09

Attorney & Counsellor at Law

General Practice of law, specializing in
Patent and Trademark Practice

Monadnock Block Chicago, Ill.

BUS MAIN 944 RES. FOREST 3144
Equitable of New York

ERNEST STAUDE

Contracts Indemnifying for

Loss

to Persons and Property

Entire Fifth Floor Equitable Bldg.
St. Louis, Mo.

"See Me and Die Laughing"

Henry P. Strieder, B.S. in E.E. '25, is now employed in the electric department of the Laclede Gas Light Company, 1017 Olive Street, St. Louis.

R. Marion Smoot, A.B. '24, Y.W.C.A., W.A.A., Rifle Club, is a technician, department of experimental medicine, University of Kansas.

Robert D. Watt, A.B. '25, principal of the Indianapolis, Ind., High School wrote, "I enjoy the Alumnus. On with the good work. Enclosed find check for three dollars."

Miss Ruby Walker, B.S. in Ed. '22, Pi Beta Phi, formerly of Laclede, Mo., is now teaching in the Sturges Junior High School, San Bernardino, Calif.

Lawrence E. Whitehead, B.J. '18, Kappa Alpha, Sigma Delta Chi, Kappa Tau Alpha, has recently privately published a volume entitled, "Memories of the World War," which depict his impressions of that conflict.

W. B. Midyette, '24, and Mrs. Midyette, formerly Miss Ruth Prather, B.J. '20, daughter of Mr. and Mrs. A. S. Prather, 1014 University Ave., Columbia, Mo., have purchased the Mt. Washington (Mo.) News, a daily paper.

Houston Harte, B.J. '15, Dana Press Club, Alpha Delta Sigma, Sigma Delta Chi, is a publisher, 106 S. Chadbourne Street, San Angelo, Tex. He married Miss Isabel Caroline McCutcheon of Pilot Grove in 1921. They have one son.

F. M. (Jack) Flynn, B.J. '24, and Mrs. Flynn, formerly Miss Maragret Barnes, '21-'24, of St. Louis, have gone to Tokyo, Japan, where Mr. Flynn has accepted a position in the commercial printing and publishing department of the Japan Advertiser. He has been employed since graduation by the E. W. Stephens Publishing Co. of Columbia.

Increased Enrollment in Short Course

The second term of the Short Course in the College of Agriculture began on Jan. 4 with 67 students enrolled, a gain of 15 over last term. Sam B. Shirky, B. S. in Ag. '18 A. M. '19 is superintendent of the Short Course.

New Wabash Station To Open January 1.

The new Wabash Railway station at Centralia, Mo., was opened on Jan. 1, with proper ceremonies and a community holiday. The new station and platform at Centralia takes on a real "up town" appearance and alumni and former students will find the Centralia scene an eye-opener.

Dr. Pickard to Resume Teaching.

Dr. John Pickard, who has not been teaching during the present semester, due to his severe illness during last summer, is going to teach the following courses during the second semester; Renaissance Painting, History of American Painting, Classical Mythology, and Masterpieces of Architecture and Painting.

The Barbers with the big
Tiger Spirit

University Barber Shop



Let Us
Photograph

Your Home.

Your Dance.

Your organization.

The Tiger Studio

9A N. 8th Phone 2214



Make
your
money
feel
at
home.

The Boone County Trust
Company.

"Built by Safe Investment"

Alumni and Former Students:
When You Return to Columbia—

Phone
491 Taxi

The Old Reliable

Ten Years of Success

17-Passenger Bus
for party calls

Jackson V. Scholz, B.J. '20, world-famed sprinter, will sail soon from San Francisco for a tour of Honolulu, New Zealand and Australia.

Walter Scot Monroe, A.B. '05, B.S. in Ed. '07, A.M. '11, is professor of education, University of Illinois, Urbana, Ill. He married Miss Lula Robnett in 1907.

Thomas T. Kopplin, B.S. in B.A. '24, Kappa Alpha, Chi Chi Chi, Glee Club, president class of '24, is now assistant advertising manager for the Fred Medart Mfg. Co., St. Louis, Mo.

Pryor Ellsworth Collings, B.S. in Ed. '18, is professor of education, University of Oklahoma, Norman. He married Miss Lessie Lee Garren in 1908. They have one daughter.

Nellie Murray Sailor, B.S. in Ed. '24, Theta Phi Alpha, is teaching vocational home economics in the Montgomery City High School, Montgomery City, Mo.

F. D. Richey, B.S. in Ag. '09, is agronomist in charge of corn investigations, U. S. Department of Agriculture, Bureau of Plant Industry, Washington, D.C.

Miss Blanche Leona Hudson, A.B. and B.S. '24, Phi Beta Kappa, Pi Lambda Theta, is teaching mathematics and Latin in the High School at 423 D Street, Grants Pass, Ore.

Allen H. Dudley, '08, Phi Gamma Delta, is in the live stock commission business, Stock Yards Station, Omaha, Neb. In 1910 he married Miss Elizabeth L. Hammer of Council Bluffs, Ia. Mr. Dudley is active in alumni affairs.

Edward S. (Eddie) Hart, Jr., former student '20-'23, Beta Theta Pi, is now with the Southwestern Bell Telephone Co., Boatmen's Bank Bldg., St. Louis. He married Miss Mary Catlin of Webster Groves, in 1922. They have one son.

Purina Mills Employs 15 Alumni.

The Columns and Tiger spirit are emphasized in a recent publication of Purina Mills, St. Louis, which company has in its employ the following 19 University of Missouri alumni: R. J. Howat, B. S. in Ag. '15; A. H. Leonard, B. S. in Ag. '23; J. S. Berry, B. S. in Ag. '23; Ralph Keller, B. S. in Ag. '24; R. A. Adams, B. S. in Ag. '12; E. R. Maxwell, B. S. in Ag. '23; F. R. Harrison, B. S. in Ag. '14; I. O. Royse, B. S. in Eng. '17; R. W. Bridges, '16; J. S. Jones, LL. B. '17; A. F. Leathers, '22-'24; R. L. Casebolt, B. S. in Ag. '23; A. M. '24; Gilbert James, B. S. in B. A. '23; E. H. Hamel, '18-19; and O. C. King, '20-22.

THE RIDGWAY
PUBLISHING CO.

12 South Seventh St.

What Are You Doing With Your Money?

Your life-time Thrift and Savings Program is best served by investing your funds in bonds where your principal is safe and by allowing compound interest to work its wonders.

We have safe bonds to meet your most exacting requirements yielding from 4.50% to 7% in \$100, \$500 and \$1,000 denominations. Our attractive list will be promptly mailed you on request

MORTGAGE & SECURITIES CO.

Warren Browne, Manager
Security Building
St. Louis, Missouri

*"Twenty-first Year—Never a
Loss to a Client."*

PAUL PARSON

A name that stands for quality in photography. That's why students and townspeople have their work done at PARSONS.

For the Freshest of
Flowers in Columbia
write, wire, or phone

Bernard's

The Florists

919 Broadway

Phone 2721

American and Annex Hotels

(Absolutely Fireproof)

7th & Market, 6th & Market
ST. LOUIS, MISSOURI

On direct car line with the Union Station and surrounded by all the leading places of amusement. 500 rooms with all the conveniences of a home. Bath (tub or shower) in every room. Running ice water. Telephone. In fact, everything to make you comfortable and feel at home.

Our "nation-famed" cooking at reasonable prices will attract you to our cafe.

E. Berkley Martin, Manager

Memorial Tower

Home Economics Building and the addition to same, now under construction, the new University Hospital, Methodist Girls' Dormitory, Boone County National Bank Building and many others are "Simon Built."

Simon Construction Company

314-18 Guitar Building
Columbia, Missouri

John A. Gloriod, LL.B. '08, is an attorney, Poplar Bluff, Mo. He married Miss Stella S. Smith in 1908. They have four sons and two daughters.

Royall H. Switzler, A.B., A.M. '98, 235 Westgate Ave., St. Louis, Mo., writes: "Congratulations on the Alumnus I am glad to subscribe. Here is my check for \$3."

Rollins H. Brownlee, A.B. '90, Sigma Nu, cashier of the Brownlee Banking Company, Brookfield, Mo., expressed regret over the loss of the Kansas game this year but says, "Cheer up, we will get 'em next time."

Rufus S. Romey, A.B. '15, Phi Delta Phi, Scabard and Blade, is an officer in the U. S. Army, Ft. Riley, Kans. He married Miss Frances M. Meriwether, A.B. '17, Alpha Phi, in 1918. They have two sons and one daughter.

Mrs. Herbert K. Thatcher, formerly Miss Lila Dalton, A.B. '12, B.S. in Ed. '14, former secretary of the Little Rock (Ark.) Alumni Association, is rapidly recovering from a recent operation. True to alumni spirit, she had as her physician, Dr. R. M. Blakely, '07-'09, Kappa Alpha, former baseball star.

Mrs. Frances B. Stout, A.B. '04, represented the University of Missouri at the dedication of the Women's Memorial Hall, Indiana University, on November 20.

Ben Long, B.S. in B. and P.A. '16, Acacia, Mystical Seven, Gamma Zeta Mu, Athenean, is an auditor, Century Electric Company, 1806 Pine Street, St. Louis, Mo.

Tom K. Smith, A.B. '04, of the Kauffman, Smith & Co., St. Louis, was elected vice-president of the Investments Bankers of America at their annual meeting in December at St. Petersburg, Fla.

Frank F. S. Houston, A.B. '22, B.J. '23, Phi Beta Kappa, Phi Delta Theta, formerly of Mexico, Mo., and a composer of three University musical comedies, is with the Loomis-Potts Advertising Co., Kansas City, Mo.

Miles C. Thomas, B.S. in Ed. '14, A.B. '16, A.M. '23, Acacia, Phi Delta Kappa, is principal of the Border Star Elementary School, 63rd and Wornall Road, Kansas City. He married Miss Lilian Evered, A.B. '22, of Montgomery City, in 1915. They have one son.

Valet
CLEANERS
AND
PRESSERS
Phone 649



- 3188 miles of main track splendidly maintained;
- from St. Louis and Kansas City on the north to San Antonio and Galveston on the south;
- serves the biggest cities in Oklahoma and Texas.
- a record for prompt, dependable freight movements;
- a record for "on time" performance of passenger trains.
- fine, fast, limited passenger trains;
- dining cars on all through trains;
- the longest continuous engine run in the world, 871 miles between Franklin, Mo., and San Antonio, Tex.

Travel and ship via KATY
for service.

PRINTING
OF
CHARACTER

Stationery
Office Forms
Circulars
Pamphlets
Catalogues
Law Books
Text Books
Edition Work

Complete
Printing
and
Binding
Service

Get our prices!
See our work!



E. W. Stephens
Publishing Co.
Columbia, Missouri

Miss Mary Searcy '14, missionary, teacher, Kure, Japan, for the past five years, is spending a year's furlough in the United States and is at present visiting her mother, Mrs. S. B. Searcy, in Columbia.

Miss Pauline Holloway, B. S. in Ed. '18 who has been teaching English in the Independence, Mo., schools, was married on March 15 to Wesley C. Dever of Huntington, W. Va. Mr. Dever is a graduate of West Point and is now state lumber inspector of West Virginia where they will make their home.

Col. T. A. Johnston, superintendent of Kemper Military School since 1881, celebrated his 77th birthday there on November 12, with a huge turkey dinner for the cadets, faculty and employees of the school. A half holiday was declared. Col. Johnston was born in 1848 in Cooper County. He has been mayor of Boonville and is now president of the Farmers Trust Co.

Shannon C. Bohart, '99, is a shoe salesman, 127 W. Lafayette Avenue, Fayetteville, Ark. Mr. Bohart played guard and tackle on the football team while in school and was said to have made the only touchdown against Nebraska from 1899 to 1925. He visited the University on November 13, the first time since 1899. He married Miss Elizabeth McGill of Bentonville, Ark., in 1904. They have one son.

THINK!

of the

Sensible Rates

at the

Hotel Columbian

Columbia, Mo.

Taylor Music Company, Inc.

Everything in Music
Ninth and Cherry Streets

56 Years of Gratiſied Success

BUSY BEE
CANDIES

THE HEART OF THE CITY

That's the Busy Bee Tea Rooms, where many a romance is nourished, and many a sweet word spoken.

Valentine's Day is coming. Bring her in and say it yourself, or let a big box of Lady Love Chocolates speak it all for you. "Do your stuff" at the Busy Bee—remember February 14.

BUSY BEE CANDY COMPANY

ST. LOUIS



George A. Bond.
Basketball Coach

Coach Bond's basketball team lost to Butler, 37-15 at Indianapolis on Dec. 29, they lost to Purdue at Lafayette 27-26 on Dec. 31, and to Michigan, 27-19, at Ann Arbor on Jan. 2. Quoting the Michigan Alumnus: "Missouri played a good game and was the best of the three teams which played on the pre-conference schedule." This northern trip was a pre-season practice for the Tigers.

The Tigers defeated Oklahoma Aggies at Stillwater, 31-23, Jan. 8, in the opening game of the Conference, and on the following night lost to Oklahoma at Norman, 28-23, lost to Ames at Columbia, — Jan. 16, and to Kansas at Lawrence on Jan. 23, score 24-15. Cap't. McMillan leads in scoring for the Tigers.

We've supplied furniture for the fraternities, the sororities, the clubs and the homes of local alumni—may we furnish big baskets for Tiger basketball victories? We're pulling for Coach Bond and his team.

Parker
FURNITURE CO.

Tom McHarg, Barton Robnett,
Overton Robnett, all alumni.

And we're tickled to death that work on the Memorial Tower and the Memorial Stadium is going on so rapidly.

Lorenzo Dow Votaw, B.S. in Ed. '10, A.B. '12, A.M. '23, is now living at 403 E. Espanola, Colorado Springs, Colo.

Wm. F. Woodruff, A.B. '07, LL.B. '09, is an attorney at 436 Lathrop Building, Kansas City. He married Miss Ethel Wengert in 1917.

Miss Elizabeth M. Wood, B.S. in Ed. '24, is teaching in the Harrison School, with address at 5243 Theodosia, St. Louis, Mo.

Chas. A. Lee, B.S. in Ed. '18, Missouri State Superintendent of Schools, made an address before Phi Delta Kappa, honorary educational fraternity, during November.

A. C. (Red) Remley, B.S. in C.E. '12, Tau Beta Pi, Acacia, is general manager of the Patten Paper Company, Appleton, Wis.

F. F. Byram, '22-'23, Pi Kappa Alpha, represented the Carter-Waters Corporation, materials of construction, 2049 Main St., Kansas City, at the letting of the contract for the first unit of the Memorial Stadium on December 1.

Whitney Irwin Gregory, B.S. in C.E. '09, is a civil engineer, in charge of the construction of Ohio River Dam Nos. 52 and 53. He married Miss Mary Rose Sheehy of Louisville, Ky. They have two sons and three daughters.

Earl J. Maxwell, '10-'11, and Mrs. Maxwell, formerly Miss Julia W. Veach, A. B. and B. S. in Ed. '13, are living at 5627 Jackson Street, Omaha, Nebr. They have one daughter, Betty Jean. Mrs. Maxwell is a member of Chi Omega.

Glenn Hensley, a student in the College of Agriculture from 1913 to 1917, has been appointed county agent of Cass County, Mo., with headquarters at Harrisonville to succeed Ira Drymon, B. S. in Ag. '18, who was recently appointed county agent of Jackson county with headquarters at Independence.

Charles Eugene Mannschott, Jr., A.B. '25, Phi Beta Kappa, Alpha Pi Zeta, Kappa Sigma, Alpha Kappa Psi, Savitar Staff, '22-'23, associate editor, '24, Savitar Board '25, Varsity Debate Squad, '24, Chairman Homecoming Committee (School of B. & P.A. '24) president, School of B. & P.A., '25, is an accountant with the Oklahoma Gas and Electric Co., Box 1149, Oklahoma City, Okla.

W. Benjamin Rollins, B.S. in M.E. '03, M.E. '05, Tau Beta Pi, Consulting Municipal Engineer, 521-22 Railway Exchange Bldg., Kansas City, in subscribing for the Alumnus wrote as follows: "Enclosed find check for \$3.00 covering my subscription to the Alumnus. I was glad indeed to read that the contract for the Stadium had been awarded even though the award was made to a Jayhawker. Mr. Carrothers has handled work for us and we found him to be a good contractor."



Robert I. (Bob) Simpson
Missouri's Track Coach

This is an open letter addressed to Bob Simpson, who coached Missouri's Championship track team last year.

We are pulling for Bob this year and for Capt. Doss Richerson, (champion pecan salesman) and the members of the track team, to win the championship of the Valley this year.

Missouri never had a better athlete than Bob Simpson nor a student who brought the University any more publicity than did he. Bob came into his own last year. After laboring diligently and suffering defeat, his men hit a winning stride and the Missouri Valley Track Championship was the result.

We wish the track coach and his team of fine boys the best of success and we are pulling for a victory.

We hope the track men will make our store their headquarters.

Victor-Barth
Clothing Co.

By I. A. Barth
Ninth and Broadway

NO CHAINS! NO MUD!

Hard-surfaced road all the way from St. Louis to Columbia via No. 2.

Think of it!

You can drive to Columbia now without fear of rain or snow!

Come on alumni. Drive to Columbia for the basketball games, and visit the University often.

Alumni Motor
Headquarters at

The Missouri Motor Co.

Jack Taylor's Place
Assisted by "Heavy" Thomas

Helen Foristell, B.S. in Ed. '25, Pi Mu Epsilon, is teaching mathematics in the Fort Smith High School, Fort Smith, Ark.

Charles A. Greene, A. B. '00, A. M. '01, Athenean Society, is Superintendent of Schools, 10th & Felix Street, St. Joseph, Mo. He married Miss Cordelia Hamer, of Cameron, Mo., in 1905. They have one daughter, Elizabeth.

Walter Wright Gibbany, B. S. in Ed. '18, B. J. '21, A. M. '22, is Statistician in State Department of Education, Box 436, Jefferson City, Mo. He married Miss Eliza J. Henderson, B. S. in Ed. '19, of McFall, Mo., in 1914.

Fred Huttig Bernet, A.B. '09, Kappa Sigma, Basketball '07-'09, secretary of the Bernet, Craft & Kauffman Milling Co., St. Louis, today sent in his check for \$3.00, one year's subscription to the Alumnus and wrote as follows: "I just want to say you are getting out a fine magazine—interesting and well worth reading and one that I look forward to getting each month."

Betty Johnson, B.J. '21, on the staff of the St. Louis Globe-Democrat, wrote one of the most interesting and colorful stories about the 1925 Homecoming. Her story was turned over to the copy reading desk and there was read and heads prepared by Joseph S. Simpich, B.J. '25, of Student Memorial campaign fame. Miss Johnson "covered" Homecoming for the Globe-Democrat on special assignment.

Fraternities—

Columbia Alumni—

Sororities—

At—ten—shun!

For your party, your dance, for
any meal, order

CENTRAL DAIRY Products.

"Dot" Sappington and
Clyde L. (Brick) Shepard
Proprietors



**NORTHEAST HIGH SERVICE
PUMPING STATION AND
EQUALIZING RESERVOIR
KANSAS CITY WATER WORK
H.H. CARROTHERS INC.
CONTRACTOR
ALSO MEMORIAL STADIUM CONTRACTOR**

We Back Missouri!

Our resources and services are always at the disposal of any University student. Alumni are always welcome when in town.

Boone County National Bank

Columbia, Mo.

YOUR ADVISOR

That's the place we try to fill for the University student. Financial worries, often besetting the paths of those attending school, can be easily avoided with our aid. Feel free to call on us. We want to serve you.

EXCHANGE NATIONAL BANK

Columbia, Mo.

Hallie Beth Stephens, B.S. in Ed. '20, of Kansas City, is also teaching mathematics in the high school at Fort Smith.

T. R. Gill, formerly of Oklahoma University, has been appointed a correspondent for the Associated Press at Columbia with offices in the Tribune Building.

Ralph Miller Pickell, LL. B. '99, cum laude in law, is an attorney and Abstractor, Kirksville, Mo. He married Miss Daisy L. Gordon, B. S. '99, of Columbia Mo., in 1901. They have four daughters.

Okel S. Fuqua, A. B. '15, LL. B. '17, Dana Press Club, is an attorney at 307 Washington St., Waukegan, Ill. He was married in 1920 to Miss Lavina M. Sylvester, LL. B. '19 from Chicago Kent Law School. They have one son.

Kerfort Moore Griffith, B. S. in Ag. '16, is a Motor Car Dealer, Kingman, Kans. He married Miss Gussie Catherine Heinrich in 1917. They have one son, John K. and one daughter, Betty Ann.

George Washington Earle, B. S. in Ed. '19, Phi Delta Kappa, is teaching at Preston Kansas. He married Miss Noreen Ward, former student, '15-'16, in 1912. They have one son, De Ward.

Dr. Lee George Potter, A. B. and Certificate in Medicine '17, is a practicing physician at 512 Commerce Bldg., Kansas City, Mo. He is a member of Alpha Kappa Kappa and the Athenean Society. Dr. Potter married Miss B. Inez Gaskill, who was graduated from the University in 1915. They have one daughter, Inez Elizabeth.

L. E. Slate, B.J. '24, publicity director for the Missouri State Fair, made a talk on "Advertising a Fair" at the meeting of the International Association of Fair Secretaries held in Chicago on December 2. Mr. Slate has carried on a wonderfully fine lot of publicity for the Missouri State Fair and the request for his address before the fair secretaries shows an acknowledgment of the high quality of his work.

Horatio B. Moore, B.J. '23, and Mrs. Moore are living at 1053 S. W. 2nd Street, Miami, Fla. Mr. Moore is space buyer and copy writer for the Miami advertising Company, 813 N. E. Second Avenue and is turning out the copy for Coral Gables and many of the other larger land companies in Miami. Mr. Moore writes that there are many, many alumni of the University located in Miami. He was formerly on the staff of the Evening Missourian.

Virgil Watkins (Bud) Surber, B.S. in E.E. '11, Tau Beta Pi, Eta Kappa Nu, Steinmetz Club, Contractor, of Akron, O., was in Columbia during the first of December on business in connection with the letting of the contract for the first unit of the Memorial Stadium. Mr. Surber's home when a student was in Moberly. This was his first visit to the University in twelve years. His brother, Mountjoy, is associated with him in business. They built the Firestone Stadium in Akron.



Isaac S. (Ike) Skelton
President of the Senior Class

Mr. Skelton revived the custom of a senior class Christmas party in the auditorium on December 17, the day before the students left for the Christmas holidays. The gifts were all "take-offs" on members of the senior class, the Deans and other members of the faculty. A huge tree almost filled the stage of the auditorium. Santa Claus distributed the gifts and the party was such a success that the class voted to make this an annual affair. They also voted to have a Senior Day and a Senior dance during the next semester.

The seniors have a good strong organization this year and they are building up enthusiasm and a spirit to carry on as a class when they become alumni.

The officers of the senior class are: President, Isaac N. Skelton, Higginsville; Vice-Pres. Oscar Myers, Jonesburg; Secretary Marjorie Newton, Parsons, Kan.; Treasurer, Laura F. Cottingham, Kansas City.

We want the seniors to be home folks at

The Missouri Store

B. W. and R. E. Lucas

Caps and Gowns and Senior
Pins Soon.

DEAR ALUMNI:—

With the completion of Highway No. 2 from St. Louis to Kansas City making it possible to come to Columbia without getting off of hard road and without excellent train service, you'll be coming back to the campus real often. We hope you won't confine your trips to Columbia to Commencement and Homecoming but also include several trips during the year. We find that alumni motor to Columbia for the week-end basketball games and these will increase in numbers as the roads are completed. Then they'll drive here for track, baseball to visit with teachers and friends and to tee the Memorial Tower and the Memorial Stadium. And we feel confident that when alumni come to Columbia they will come here to eat and meet and to enjoy the true student atmosphere. We cater to alumni; we take particular pride in serving them—our chef loves to prepare old southern dishes in response to alumni orders.

Don't fail to come in when you are in Columbia—say hello anyway.

HARRIS' CATERING COMPANY

A. A. (Duck) Millard

Stanley Sisson

Beginning February 1 we are going to broadcast "Doc" Miller's Bella Vista Quadrangle Orchestra program from station KFRU, Stephen's College, every afternoon, 2:30-5:30 except Sunday. Listen if you want some student music as she is played.

COOPER-CARLTON HOTEL**Headquarters for the Big Athletic Events**

**They Select the
COOPER-CARLTON**
American League Baseball
Clubs.
University of Michigan.
University of Wisconsin.
University of Illinois.
Purdue University.
University of Missouri.

Collegiate Athletic teams when in Chicago make the COOPER-CARLTON their headquarters. Away from the noise and congestion of the "Loop," yet only ten minutes from downtown, the COOPER-CARLTON is conveniently located near the University of Chicago.

Write or Wire for Full Information.

COOPER-CARLTON HOTEL

Hyde Park Boulevard at 53rd Street, Chicago

Special Club Rates

offered to athletic teams. Famous for preparing special menus for athletes. The Crystal Ball Room and Gold and White Room are among the most beautiful in Chicago.



George F. Wise of Columbia
Captain of the Debating Squad

Two try-outs were necessary to select the debating squad this year due to the seventy contestants entered. George F. Wise of Columbia, is captain.

The members of the Debating Board for 1925-26 are: J. W. Rankin, Chairman; Stephen I. Langmaid and H. G. Brown. They chose the squads. The freshman squad is composed of: Thomas Carroll, Kansas City and M. M. Christensen; K. M. Gentry, Joplin; Vincil Harmon, Odessa; Homer E. Raber, Holden; Owen Ross, Bethany; Clyde R. Welman, Kennett. The varsity squad is composed of: A. K. Anderson, Shreveport, La.; Louis Atherton, Oklahoma City; Jean Paul Bradshaw, Lebanon; E. Clay Frey, Bernie; Elza Johnson, Carthage; Mary Ramsey, Knobnoster; Clarence Schubert, Russellville; H. G. Sigman, Kansas City; George Wise, and Henry Depping, Moscow Mills.

The first debate of the season was with the University of Kansas on December 9. A debate was held at Lawrence and at Columbia on the same evening. The question discussed was, "Resolved that the United States should join The World Court." The Missouri debaters who spoke in Columbia were Mary Ramsey and Louis Atherton. The debaters who spoke at Lawrence were Clarence Schubert and Jean Paul Bradshaw. The decisions were given by the audiences. Missouri upheld the affirmative side of the question at Columbia and won an audience decision. The Missouri team at Lawrence supported the negative side of the question and won an audience decision. After the debate at Lawrence a vote was taken to decide who was the best debater on the platform. The Kansas audience voted almost unanimously for Mr. Bradshaw. After each debate an open forum was held and the audiences asked the debaters questions. The audience at Columbia was one of the largest ever out to a debate, numbering about seven hundred.

The dates of future debates follow: Iowa, February 12; freshman and varsity debate with Washington, February 19; Oklahoma debate, two-hour convocation contest, morning of March 1; The Women's debate with Washington April 22. The question for these debates is, "Resolved, that Congress should adopt Colonel Mitchell's plan for a single department of National Defense with three equal co-ordinate branches of Army, Navy and Air." 11 question for the Womens debate is, "Resolved that the child labor amendment should be ratified by the various states."

DORN-CLONEY LAUNDRY CO.

Managed by the Milburn Bros.

Gerald N. Waddell, B.S. in Eng. '22, Phi Gamma Delta, Chi Chj Chi, formerly of Kansas City, has taken over the Ford Agency, Great Bend, Kans. He married Miss Katherine A. Davis in 1922.

James Chester Harmon, B. S. in Ed. '16, is teaching at 22nd and Ruby, Kansas City, Mo. He married Miss Mary Yancy, '14 '15, summer sessions, of Waverly, Mo. in 1916. They have two sons.

Dwight S. Foster, E. E. '16, Tau Beta Pi and Eta Kappa Nu, is an Electrical Engineer with the Empire Gas and Fuel Co., Bartlesville, Okla. He married Miss Edna M. Davis of Marion, Indiana in 1922. They have one daughter.

Lloyd Y. Spragg, former student '06-'08, Alpha Tau Omega, is in the real estate, farm loans and insurance business at Ridgeway, Mo. He married Miss Lillian Witt, B.S. in Ed. '16, in 1917. They have one daughter, Marion Lygenia.

Joseph Raymond Wine, LL.B. '11, is a member of the law firm of Walsh, Scallow Wine, Helena, Mont. He has been county attorney for Lewis and Clark Counties and is a permanent member of the legal advisory board. He married Miss Julia Mae Willett in 1916. They have two sons.

Vernon John Helmers, B.S. in B.A. '23, Sigma Alpha Epsilon, and Alpha Kappa Psi, is in the wholesale furniture business, Kansas City, Mo. He writes: "Keep the Alumnus coming my way. It certainly serves its purpose well. I hear only favorable comment on it."

Robert Edgar Shook, LL. B. '22, is practicing law at Marshall, Mo. He was formerly City Attorney. Mr. Shook is a member of Sigma Nu, Q E B H and Phi Alpha Delta. While he was a student he took an active part in the Student Memorial Campaign and has been actively interested in this work since his graduation.

Richard Y. Jones, B.S. in Eng. '22, Kappa Sigma, Tomb and Key, Engineers' Club, A. Soc. Civil Engineers, Pres. Am. Ass'n of Eng. '21-'22. Ad Club, Pres. Newton County Club '20-'21', St. Pat's Board, '19-'20, Gregory Senior Scholarship '21, Knight of St. Pat '21, Board of Directors, Missouri Union '21-'22, Tennis team '20-'21-'22, Captain the latter year, was here for Homecoming. Mr. Jones is a civil engineer at Neosho, Mo.

E. W. Stephens, A.B. '67, A.M. '07, I.L.D. '05, and Mrs. Stephens and Mr. James H. Moss take pleasure in announcing to their friends that they are located in camp until further notice at Charlotte Harbor, Charlotte County, Fla. "It is located in Southwestern Florida, on the shores of a bay of the Gulf of Mexico. It will be our post office address. Telegrams must be sent to Punta Gorda, Fla., two miles distant from Charlotte Harbor, which has no telegraph station." They send greetings to all their friends and are pleased to announce that they are well and pleasantly situated.

Granville Dennis Edwards, A. B. '97, Phi Beta Kappa, is Dean of the Bible College at the University. He married Miss Ida May Moore, B. L. '99, of Perry, Mo. in 1900. They have one son, Corwin D. Edwards, A. B. '19, B. J. '20, who is an instructor in Economics at Cornell University.

Is This the Advertisement You Were Looking For?

It is NOT!

You were looking for the advertisement of something to satisfy Present Needs and make your Daily Existence more Comfortable.

You may not Heed this Advertisement—so long as life moves along without a hitch. But there are such things as accidents and tragedies. Suppose they happen to you? What next?

SECURITY! Quite necessary for happiness and contentment and the enjoyment of Family, Friends and the World's Goods.

Be attentive to the next life insurance agent who comes to see you, and if he happens to represent the John Hancock Mutual of Boston remember that he has behind him a Strong Company Over Sixty Years in Business whose policies are most Liberal and Safe and Secure in every way.


LIFE INSURANCE COMPANY
OF BOSTON, MASSACHUSETTS

Hickey-Freeman Suits and Overcoats Substantially Reduced

Canterbury's and a few new Blue Suits excepted

St. Louis' Greatest Store for Men

Boyd's

*Boyd-Richardson
Olive and Sixth*



THE MAYFAIR HOTEL
*St. Louis' Newest and Most
Modern Hotel*

Located right in the center of the business, theater and shopping district and convenient to the St. Louis railroad Union Station, street car and bus lines.

Every one of its 400 rooms has a bath and all beds have Simmons Box Springs and Marshall Inner-Spring Mattresses.

All rooms have outside exposure, circulating ice water, electric fans, large closets, bed lamps and other unusual features.

The last word in modern hotel construction and unsurpassed service. Rates from \$3.00.

Guests of the MAYFAIR will long remember with pleasure its wonderful cuisine.

In comfortable and luxurious appointments the MAYFAIR is matchless.

Hotel Mayfair

Alumni headquarters in St. Louis.

Charles Heiss is the amiable, genial, and courteous manager. He is particularly anxious to give personal attention to University folk, their requests for reservations, and their personal comfort while stopping at his hotel.

Hotel Mayfair is the home of "The Voice of St. Louis, Inc." Radio Station KMOX, one of the largest in the United States. Mayfair guests are especially welcome to the visitor's auditorium, where you can see and hear the artists.

Here's to a Victory at Wichita-

The home concert of the Glee Club was given in the Auditorium of Jesse Hall on January 13. Eighty University men participated in the singing, under the directorship of Prof. Herbert Wall of the School of Fine Arts.

Outstanding in the concert was the singing of Ben Symon, tenor, and Leonard Stokes, baritone, and the songs by the quartet composed of "Buddy" Montgomery and E. A. McLeod of the School of Fine Arts were the accompanists.

The numbers which are to be used in the Missouri Valley Championship contest were sung. "Alma Mater," a new song, words of which were written by Thomas T. Railey, A. B. '07, and the music by Dean James T. Quarles of the School of Fine Arts, was sung by the Glee Club for the first time to a University audience.

The program was broadcast by Station WOS, through remote control from Christian College. Many telegrams were received during the course of the singing. Leonard Stokes was the announcer. One of the features of the program was one of his responses to encores when he stepped to the microphone and announced that he would sing "Sunrise and You," and then added, "Mother, I am singing this to you." Mr. Stokes' mother was listening in to the Glee Club concert and to her son's singing to her at her home in Moultrie, Ga.

The next appearance of the Glee Club will be in the Missouri Valley contest in Wichita, Kansas, on February 5. About 40 men will make the trip. The Alumni Association in Wichita is making arrangements to entertain the Missouri boys.

Last year the Missouri Glee Club was awarded the championship of the Missouri Valley which entitled them to participate in the National contest in New York City, where they won third.

Here's best wishes for another championship at Wichita on February 5. Good luck boys. Come in to see us before you go and when you get back.

George Helm

Frank Bihr

Mrs. Paul Raymond Williams, formerly Miss Gladys Roberts, B. S. in Ed. '17, is living at 133 S. Lorimer Street, Cape Girardeau, Mo. Mrs. Williams is a member of Phi Mu sorority.

Mrs. W. T. Merriman, formerly Miss Marie O'Day, B. S. in Ed. '13, member of Pi Beta Phi, and Mr. Merriman, former student in '10 and '12, of Springfield, Mo., write that they just couldn't get along without the Alumnus.

Leslie E. Bates, A.B. '04, LL.B. '07, attorney, Excelsior Springs, Mo., and president of the Clay County Alumni Association, visited Columbia for Homecoming and addressed a gathering of Columbia citizens on the city manager plan of government.

A. I. Foard, B.S. in Ag. '15, Colorado Springs, represented the University on December 5, on the occasion of the inauguration of Charles Christopher Microw as president of the Colorado College in Colorado Springs.

Gordon Maffry, A.B. '20, Phi Beta Kappa, Alpha Zeta Pi, is now in the sales department of the Fuller Brush Co., Hartford, Conn. He writes, "It is good news to get of Missouri's undaunted spirit that is evident everywhere, especially in the 1925 football organization."

Tom W. Parry, B.J. '23, and Mrs. Parry, formerly Miss Exie Gray, B.J. '23, who were formerly owners of the Centralia (Mo.) Courier, have moved to St. Louis where Mr. Parry is on the staff of the St. Louis Post-Dispatch. Mr. Parry's brother, Duke, B.J. '22, is now in New York City.

Emil H. (Duke) Eisentrager, A.B. '24, is teaching history in the New York City High School and doing graduate work at Columbia University. His address is 978 Whitlock Avenue, N. Y. City. He wrote, "I enjoy the Alumnus very much. It keeps me in touch with University affairs."

Miss Adeline Jesse, A.B. '13, B.S. in Ed. '14, formerly a social worker in Chicago, has accepted an appointment as visiting teacher in Denver, Colo. This is a joint undertaking between the Colorado Branch of D.A.R. and the Denver School System, and is to be in the nature of a demonstration. Miss Jesse began that work on November 9 under the supervision of A. L. Threlkeld, B.S. in Ed. '19, deputy superintendent of the Denver public schools. Miss Jesse's address is Hotel Ayres, 1441 Logan Street.

Albert L. Schweitzer, LL.B. '11, Phi Alpha Delta, prosecuting attorney, 151 Municipal Bldg., St. Louis, in paying his Memorial Union and Stadium Life Membership wrote: "It is a pleasure to add my mite to the great cause of the Memorial Union and Stadium fund. I sincerely hope that all alumni will see the light and will realize the need of money to erect those two memorials and will pay up in full at once. To be a Missouri Alumnus is a proud heritage."



Ann Elizabeth Lewis
President, Women's Glee Club

The Women's Glee Club, under the direction of Miss Emma Griesel, assistant professor of voice in the School of Fine Arts, has been climbing to the goal set by the Men's Glee Club.

The club has been organized for several years, but is more active this season. A complete reconstruction has been perfected. The first home concert will be presented February 17, 1926, in the University Auditorium.

The club has appeared previously in a student recital given by the School of Fine Arts, in the University Christmas Vesper Service, and before the Fortnightly Club, and in the opening program of Farmers' Week, January 21.

The officers of the club are: President, Ann Elizabeth Lewis; Vice-President, Dorothy Brooks; Secretary, Margaret Schaper; business manager, Maud Peterson; librarian, Maria Fetters. The members include: first sopranos, Maria Fetters, Nancy Gibbs, Ruth Gillaspay, Mary Sue Guthrie, Lillian Keltner, Margaret Lilly, Mary Ann McDonald, Maud Peterson, Bess Showers, Rachel Way, Martha Miller, Jessie Lee Brown; second sopranos, Gladys Brand, Aljean Fox, Ellen Maupin, Marion Reid, Elizabeth Smith, Louis Sparrow, Catherine Walker, Mary Woodhouse, Caroline Waldron, Camille Kuhne; first altos, Joanna Bedell, Eileen Beasley, Dorcas Beery, Verna Leech, Virginia Meierhoffer, Evangeline Merritt, Margaret Schaper, Katherine Scott; second altos, Dorothy Brooks, Addie Cohen, Dorothy Firmbach, Verna Hall, Frances Kinsley, Ann Elizabeth Lewis, Betty Lou Hill. Accompanist Rosemary Thickett, and Director Miss Emma Griesel.

After the home concert, the club will be ready to fill engagements in other towns to which it will be invited.

We are staunch supporters of the Girls' Glee Club. Glee Club girls make their school purchases at

THE CO-OP

Chas. E. Barkshire, Mgr.

When You Sell By Mail---

WHETHER it is your school or your business, when yours is the task of selling it by mail, you improve your chances of success in the same proportion that you improve the printing you use.

School catalog or business catalog, school pamphlet or business circular, it's all the same---you increase your success in selling as you improve the quality.

Equipment and experience enable us to do a better class of work than you ordinarily find outside of large cities, and our prices are more reasonable than you can find in the cities.

Herald Statesman Publishing Company

Stationery

Engraving

Good Printing

Columbia, Missouri

COURSE IN
CERAMIC ENGINEERING

Will be offered this fall by
MISSOURI SCHOOL OF MINES & METALLURGY
Of the University of Missouri
Rolla

Briefly expressed, Ceramics is the art of working in clay, and includes such varied fields as the making of common brick, hydraulic pressed brick, paving brick, fire brick, and shapes for industrial furnaces, pottery and chinaware, terra cotta forms and shapes for building, sewer tile and tile for drainage.

This course is offered with the cooperation of the Clay Industries of Missouri, who sponsor this advertisement.

For information, address,

Registrar,
School of Mines and Metallurgy,
Rolla, Mo.



When this dredge started work the Mayor of Nome, Alaska, declared a holiday and all of the inhabitants attended.

The "Forty-Niner" of '26

Massive electric dredges now mine Alaskan gold. At almost incredible temperatures they dig 60 feet deep and scoop out 200,000 cubic yards a month.



General Electric supplied all electrical equipment for two such dredges now operating at Nome. A Diesel-electric power plant, four miles distant, furnishes the energy for a total of 592 h.p. in electric motors for each dredge. To cope with winter conditions G-E cable was chosen to carry the power to the dredges.

From the Arctic regions to the Equator, G-E equipment is called upon to perform many hard tasks once done by hand but now better done by electricity.

GENERAL ELECTRIC

You'll Appreciate

- the Attractive Rates
- the Dining Facilities
- the Handy Location



500 Rooms

Room without Bath	\$2.00 and up
Room with Bath	\$2.50 and up
Double Room and Bath	\$4.00 and up
Room with two single beds and Bath	\$5.00 and up

RESTAURANT—COFFEE SHOP

Service at all times 6 a. m. until midnight

POPULAR PRICES

Hotel Baltimore

12th Street and Baltimore Ave.
KANSAS CITY, MO.