

14-7 = 1926.

The Missouri Alumnus

Volume XLV

March, 1926

Number 7

UNIVERSITY OF MISSOURI
SCHOOL OF JOURNALISM

Academic Tower

Miles Saved
 **to Detroit**
and Toledo

From Kansas City

Through service over the shortest line via Hannibal—Leaves Kansas City at 5:15 p. m. daily—Arrives Toledo 1:20 p. m.—Detroit 1:45 p. m. Chair cars and sleeping cars through from Kansas City to Detroit. Dining car service for all meals.

From St. Louis

Three fine fast trains leave St. Louis Union Station at 8:30 a. m., 6:30 p. m. and 12:05 midnight. Chair cars and sleeping cars on all trains through from St. Louis to Detroit. Dining car service for all meals.

Any ticket agent will tell you about Wabash Railway service, make reservations and furnish you with ticket, or write for detailed information to



H. E. WATTS
Passenger Traffic Manager, St. Louis.

Wabash

American Color Engraving Co.



Artists, Designers
Photo-Engravers

*For All Printing
and Advertising Purposes*

914 Pine St.

St. Louis, Mo.



THE MAYFAIR HOTEL
St. Louis' Newest and Most
Modern Hotel

Located right in the center of the business, theater and shopping district and convenient to the St. Louis railroad Union Station, street car and bus lines.

Every one of its 400 rooms has a bath and all beds have Simmons Box Springs and Marshall Inner-Spring Mattresses.

All rooms have outside exposure, circulating ice water, electric fans, large closets, bed lamps and other unusual features.

The last word in modern hotel construction and unsurpassed service. Rates from \$3.00.

Guests of the MAYFAIR will long remember with pleasure its wonderful cuisine.

In comfortable and luxurious appointments the MAYFAIR is matchless.

Hotel Mayfair

Alumni headquarters in St. Louis.

Charles Heiss is the amiable, genial, and courteous manager. He is particularly anxious to give personal attention to University folk, their requests for reservations, and their personal comfort while stopping at his hotel.

Hotel Mayfair is the home of "The Voice of St. Louis, Inc." Radio Station KMOX, one of the largest in the United States. Mayfair guests are especially welcome to the visitor's auditorium, where you can see and hear the artists.

THE MISSOURI ALUMNUS

Vol. XIV. No. 7

MARCH, 1926

COLUMBIA, MO.

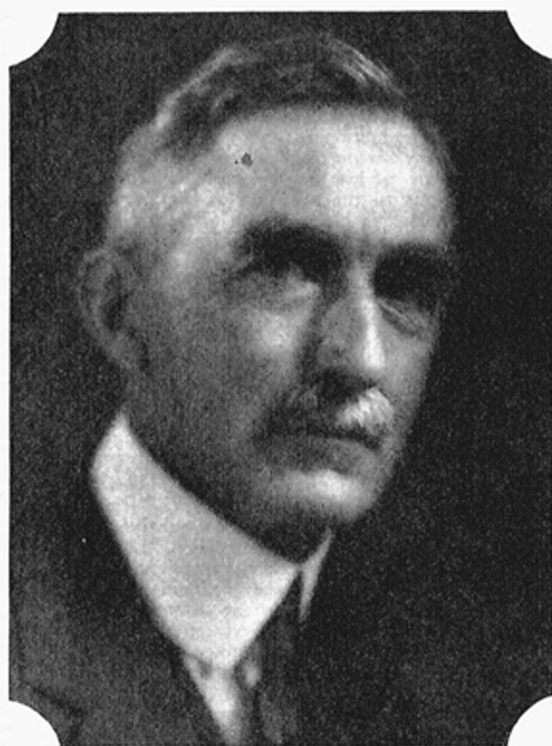
The College of Agriculture

By F. B. MUMFORD, *Dean*

THE Morrill Act of Congress approved by President Lincoln in 1862 provided for the establishment of a College of Agriculture and Mechanic Arts in each state. Missouri did not immediately accept the provisions of this act due to prolonged discussion as to the location of the College of Agriculture. It was feared by the friends of agriculture that the location of the College as an integral part of the University would not be a favorable environment for the development of this new type of education. Fortunately, the Legislature was finally convinced that it would be in the interests of economy and efficiency to combine the new institution with the University already established, and in 1870 the College was located at Columbia.

The progress of the College for the first quarter century of its existence was not significant or important. At the end of this period it appears in the catalog for 1894-95 that there were on full time three bona fide teachers of agriculture in the institution; Dr. Paul Schweitzer, agricultural chemistry; Professor W. K. Quick, agriculture; and Professor J. C. Whitten, horticulture. Because of the lack of progress and development, the Legislature was very critical of the University, and a movement was inaugurated (1894-5) to remove the College from the University. This movement failed but resulted in increased appropriations, enlarged faculty, and more aggressive policies in the development of this division. The growth of the College from 1900 to the present has been rapid. Before this period the College Graduated an average of two men each year. In recent years more than 100 students have been given undergraduate or graduate degrees at Commencement.

The major objectives of the College of Agriculture are three: Training men and women for successful citizenship in a rural environment; the development and improvement of the agricultural industry through scientific research; the extension of results of such research to those engaged



in the agricultural industry. In addition to these major objectives, which were clearly set forth in the Acts of Congress, the demand for trained men and women in many related fields has resulted in the organization of curricula for the training of teachers of agriculture, agricultural engineers, agricultural journalists, and scientific research workers. There is at present an exceptional demand for graduates of agricultural colleges from business firms and corporations dealing primarily with farmers or in the commerce of agricultural commodities.

It was clearly the intention of the founders of the colleges of agriculture to give instruction to the industrial classes with emphasis upon the agricultural classes. For twenty-five years, these institutions struggled with the problem of

providing a college training in agricultural subjects. They were not notably successful. The type of education contemplated by the Morrill Act was radically different from the prevailing idea of what a college course should include. These institutions, therefore, had the opposition of the traditional liberal arts colleges.

They were not satisfactory to the farmers because they were not practical enough. The colleges themselves attempted to conform to the prevailing ideas of college courses, and as a result very little technical or practical agriculture was taught.

It was finally recognized that one reason why the colleges of agriculture were not accomplishing the purposes of their founding was because there was no well-organized body of knowledge about agriculture which could be taught. A recognition of this fact led to widespread interest in the establishment of agricultural experiment stations. After many years of agitation, Colonel William H. Hatch of Missouri introduced the so-called Hatch Bill providing for the establishment of agricultural experiment stations in connection with each college of agriculture in the United States. The bill was approved in 1887 and marks the beginning of the rapid development of colleges of agriculture. The passage of the Hatch Act resulted in greatly enriching the curriculum of the College of Agriculture by placing the practices and methods of agriculture on a more scientific basis. The experiment stations also contributed in a very marked degree to the improvement of the agricultural industry.

So great was the success of the experiment station movement that additional appropriations have been made by the Federal and State governments for this purpose. The Adams act was approved in 1906. The Purnell bill, which eventually provides for an annual appropriation of \$60,000 to each experiment station, was passed by a unanimous vote of both the House and Senate and approved by President Coolidge in February, 1925.

The last report of the Missouri Agricultural Experiment Station publishes the names of over seventy individuals on its staff engaged in some form of research in agriculture or home economics. The same report publishes a brief description of the results of work being done in connection with fifty separate research projects. In the one year ending June 30, 1925, the Station published forty-nine bulletins. These publications if, bound in one, would represent a volume of 1,156 pages. The total number of pages of printed matter distributed, amounted to 8,621,800 pages in one year.

It is not too much to say that modern agriculture would not be possible without the help of the agricultural experiment stations. The enemies of agriculture increase as the agriculture of a country grows older. Plant and animal diseases are very much more serious menaces to agriculture today than at any former time. The control measures and methods of prevention developed by the experiment stations are essential to modern agriculture.

The passage of the Smith-Lever Act in 1914 resulted in the very rapid development of agricultural extension work throughout the United States. It is the function of the Agricultural Extension Service to disseminate to farmers and all others engaged in the agricultural industry the results of investigations conducted by the Experiment Station. At the present time the Extension Service includes more than 100 employees. The extension workers are chiefly of two classes,—extension specialists and local extension agents. It is the general policy of the College of Agriculture to develop in each locality certain agricultural programs looking toward the improvement of the agriculture of that community. The extension specialists, county extension and home economics agents, and local farmers' organizations are responsible for carrying out the programs. The Extension Service has grown rapidly and at present there are sixty-nine counties served by extension and home economics agents.

The funds for extension work are provided first, by the Smith-Lever appropriation of Congress; second, by the State appropriation; and third, by appropriations from the county courts and by voluntary contributions from the farmers themselves. It is particularly noteworthy that the extension work has so well demonstrated its value that the county courts are continually increasing their appropriations for this purpose. At the present time the limiting factor in the expansion of extension work is the very small appropriation made by the State government.

The demand on the College for various types of service is extensive. In one year more than one hundred thousand letters were received and answered pertaining to the problems of agriculture. The organization of its scientific laboratories places the institution in a position to render very great and valuable service to farmers. The Experiment Station is now manufacturing and distributing anti-hog-cholera serum. The use of this preventive has undoubtedly added millions of dollars to the wealth of Missouri. The conservation of soil fertility is very largely to be effected in Missouri by the growth of legume crops

in a proper rotation with fertilizer. In promoting the growth of legume crops in this state, the College has found that inoculation is important and exceedingly profitable. It is therefore manufacturing cultures for alfalfa, clover, soybeans, and cowpeas. This inoculating material is being sold to farmers at cost.

The work of the colleges of agriculture and agricultural experiment stations has made very great progress in the solution of the problems of production of all farm crops and of domestic animals. It is in this field that they have rendered their greatest service. It is, however, true that they have made significant contributions to the organization and improvement of rural social life and have added to our knowledge of the broader problems of general economics. The passage of the Purnell Bill in 1925 emphasizes the importance of the economics of agriculture, and provides specifically that the funds appropriated under this act shall be used in part for economic investigations. In recent years it has come to be recognized that the farmer's prosperity is quite as much dependent upon general economic factors as upon production of farm products. There is every reason to believe that the contributions of the agricultural experiment stations to the solution of the broader economic problems of the farmer will be no less significant and important than have been their contributions to the solution of problems of production.

Dr. Brooks Named Administrator of William Rockhill Nelson Estate

Dr. Stratton D. Brooks, President of the University, and the presidents of the universities of Kansas and Oklahoma were named administrators of the estate of William Rockhill Nelson of Kansas City under the provisions of Mr. Nelson's will. Upon the death of Mrs. Laura Nelson Kirkwood, daughter and sole survivor of Col. Nelson, in Baltimore, Feb. 27, the three university presidents were called to Kansas City and they appointed the following trustees for the Kansas City Star and the Nelson estate: William Volker, Herbert V. Jones, and J. C. Nichols, all of Kansas City. These trustees will manage the Kansas City Star edited by Mrs. Kirkwood's husband, until the paper can be sold.

Mr. Nelson's will provided that the property shall be sold within two years and that the money derived from the sale shall be used for the purchase of works of art for Kansas City.

Shannon Douglass Insurance Agent.

Shannon C. Douglass, LL.B. '10, Sigma Alpha Epsilon, Phi Delta Phi, Tomb and Key, is in the insurance business, 410 Rialto Bldg., Kansas City. Mr. Douglass was a member of the track teams of 1907, '08, and was captain in '09. He was formerly a member of the intercollegiate athletics committee. He married Miss Olive Folsom, Springfield, Mass., in 1916. They have two sons, Shannon Clay, Jr., and James Folsom. Mr. Douglass' father, Shannon Clay Douglass, Sr., received the degrees of A.B. '70 and A.M. and LL.B. in '73. His great grand-grandfather, James Shannon, was president of the University.

Curators Meet March 1.

The following members of the Board of Curators attended the meeting in St. Louis on March 1: Judge James E. Goodrich of Kansas City, president; E. Lansing Ray of St. Louis; Milton Tootle of St. Joseph; C. F. Ward of Plattsburg; Mercer Arnold of Joplin; F. M. McDavid of Springfield; H. J. Blanton of Paris; and J. P. Hinton of Hannibal.

The board appointed Frank B. Rollins to succeed T. Kent Catron as a member of the committee on inter-collegiate athletics.

Miss Mabel V. Campbell was appointed professor of home economics. This appointment is effective next September. Miss Campbell is now with the home economics vocational training, federal board, Washington, D. C. She formerly taught in New Jersey, Colorado and Kentucky.

Miss Ella Pearl French of Thayer, Mo., was appointed instructor in home nursing in the department of home economics, effective September next.

Leave of absence for one year was granted to Robert E. Mann, professor of journalism. Miss Bessie McClanehan was given a leave of absence for the present semester.

Student instructors were appointed as follows: Louis E. Grandy, electrical engineering; Forest R. Hughes, engineering drawing; Donovan Rhynsburger, English.

Miss Mabel McMahon was appointed county economics agent for Saline county. Miss McMahon has held a similar position in Meade county, Kansas.

R. E. Holman former superintendent of schools at Seligman, Mo., was appointed instructor in charge of the class at Wheaton, Mo.

Owen McCammon was appointed county agent for Clinton County.

John Hunziker, appointed correspondence instructor in history, effective February 16, 1926, to June 15, 1926.

Albert C. Bernthal, appointed assistant instructor in germanic languages—part time—effective February 1, 1926 to June 30, 1926.

Ben Symon appointed reader in mechanics of engineering, effective September 1, 1926 to May 31, 1927.

Oley Price Minnick, appointed reader in mechanics of engineering, effective September 1, 1926 to May 31, 1927.

Frank H. Skelly, reader in military department, effective February 1, 1926 to May 31, 1926.

Willie Faith, mathematics; Carl Metzert mathematics; Harry T. Rall, mathematics; T. N. Huff, mathematics; Louis Bumgardner, mathematics; Virgil V. Bachtel, mathematics; John H. Radford, chemistry; Bernard M. Marks, chemistry; Joseph E. Houston, history; Carl Richardson, geology; Harry Rummell, geology; William Borders, geology; Lawrence C. Mitchell, art.

Henry Holtzer, Albert Charles Krueger, Maynard McDowell, Arthur Maurer, Mildred Potter, Laura Seibel are graduate assistants in chemistry.

Raymond C. "Louie" Lewis, B.S. in Ed. '20, is athletic director, Yeatman High School, St. Louis.

University Library Lends 228,442 Volumes in 1925

By H. O. SEVERANCE, Librarian

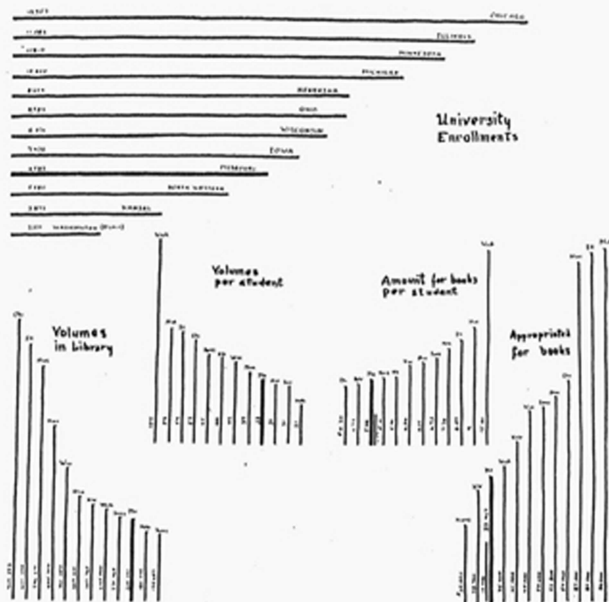
The University Library is a busy place. It loaned to students and others on the campus 228,958 volumes in 1925. It loaned to citizens in the state 2,484 volumes, 268 debate packages for high schools, 88 packages of reading material to women's clubs and to individuals and 767 clippings. Four hundred and twenty-three towns in Missouri were served by the University Library.

The Library could render a much more efficient service, if it had more space in the library building. The Freshman Reading Room is in Jesse Hall. The Reading Room in the main library is not sufficiently large to accommodate the readers especially during the hours of 8:00 to 10:00 p. m. One of the persistent needs, therefore, is for a large room where all the "reserved books" may be handled, including the freshman reading. Then, again our stacks are full. A new wing to the present building is one of the great needs of the library, if the library is to render more than mediocre service. The second great need is for more books both for under-graduates and for graduate work. The library is strong in certain fields, but even in these there must be annual additions. In American, English, German, and Romance Languages and Literatures, it is weak. It is compelled to borrow from other libraries two hundred or more volumes annually to enable research students to carry on their work.

The state appropriations for the library are not sufficient to enable the library to hold its present rank among university libraries in the middle west, nor is it sufficient for book needs of our teachers, students, and research workers. The library is the laboratory for students in the social sciences, literature, and the like. Students for graduate work naturally choose to do their work where the library facilities are adequate to their needs.

The purpose of the graphs above, prepared by W. H. Collins, the Reference Librarian, is to call the attention of our Alumni to the needs of the library by comparison with other university libraries in the middle west.

The first graph shows the comparative enrollment in twelve middle west universities. Missouri's relative position in this graph is explained by the fact that many students take their freshman and sopho-



more work in our junior colleges. On account of this relatively small number of students, the library ought to have a higher grade in the graphs showing "volumes per student" and the "amount spent for books per student."

Missouri stood tenth in the size of her library in 1925, and in the number of volumes added. In 1923 she ranked ninth. In the matter of annual appropriations, Missouri was tenth in 1924 but twelfth or lower in 1925. The library spent for books, periodicals and bindings during 1924 \$33,467 and in 1925 only \$16,490. Compare this with \$31,000 for Nebraska and \$50,000 a year for Ohio. Kansas University is spending on its library \$5.11 per student and Iowa \$6.73 while Missouri spent \$5.08 in 1924 and \$2.50 in 1925. Can we afford to let the University of Missouri Library fall behind in all the other state university libraries in the middle west in size in appropriations, in efficiency? Can we afford not to build up a good research collection in science, history, literature, art, and the like?

M. U. Placed Third in Valley Track.

Missouri won 3rd in the Missouri Valley Conference at Ames on March 13. "Indian" Schulte's Nebraska team was first.

Missouri winnings: Grantello, first, 440-yard dash; Richerson second, shot-put; Farley and Grantello third and fourth, 50-yard dash; Lancaster first, broad-jump; Lawton and Potts and others tied for fourth in high-jump; Lancaster and others tied for fourth in pole-vault; Steele fourth in two-mile; Missouri fourth in mile relay.

Simpson Leaves M. U. for Iowa State

Robert I. (Bob) Simpson, B. S. in Ag. '17, Beta Theta Pi, Mystical Seven, Farm House, track coach, has accepted the offer of Iowa State (Ames) to assume the duties of head track coach, effective September 1. The offer carries with it a substantial increase in salary and Chester L. Brewer, Missouri's Director of Athletics, says it is both a professional and a financial advancement for Bob.

"We at Missouri congratulate Iowa State," said Mr. Brewer, "for Bob Simpson is a great coach, a true sportsman and a gentleman. We will miss him here at Missouri."

"I will surely hate to leave Missouri," said Mr. Simpson. "My years here as an



athlete and later as a coach have been the happiest days of my life. I will never forget them."

Bob Simpson was the greatest all-round track star Missouri has ever had. He was on the team three years and was captain his last year, 1917. He won more points in competition than any one man who has ever competed for Missouri. He still holds the University records in high hurdles, low hurdles, and broad jumps and also holds the Missouri Valley records in both hurdles. He won both hurdle events for three years in the Missouri Valley and Western conferences, a feat that has never been equaled.

At one time at the height of his career Bob held nine world records, more than any other athlete had ever held before or has ever held since. He won the national championship, won the Penn Relays, and went abroad with a selected group of athletes and made a remarkable record, winning cups and trophies in Norway, Sweden, Denmark, and on the continent. He won the hurdle event in Paris in 1918 in the Inter-Allied Meet.

Bob married Laura Meryle Leavel, B.S. in Ed. '18, Alpha Phi, in 1918. They have one daughter, Phylliss.

Following are events in which he set records while at the University:

Indoor Records

50-yard low hurdles, 3 hurdles-Kansas City, March 3, 1917.

50-yard low hurdles, 4 hurdles—St. Louis, March 10, 1917.

50-yard high hurdles, 4 hurdles-Kansas City, March 3, 1917.

60-yard low hurdles, 5 hurdles-Louisville, Ky., March 24, 1917.

70-yard low hurdles, 5 hurdles-New York City, Jan. 24, 1917.

(Now, Page 198, Please)

First Fine Arts Day at M. U. Will Be Held April 21

By JAMES T. QUARLES, *Dean*

IN A number of Universities in the middle west, Fine Arts Day has come to be one of the picturesque events of the school year. The first Fine Arts Day at the University of Missouri will be held on April 21. It will be given for the primary purpose of bringing to the attention of the student body and the general public the claims of the fine arts to a vital place in our civilization.

The program will open with a special convocation in the University Auditorium at 10 o'clock in the morning at which the University Band, the Women's Glee



Club and the Men's Glee Club will all appear. The chief event of the convocation will be an address on the place of the fine arts in the life of the ordinary citizen. The speaker will be announced later.

At noon, Phi Mu Alpha, honorary musical fraternity, will give a special luncheon to distinguished visitors at the Daniel Boone Tavern. At 3 o'clock in the afternoon will be given a public recital by advanced students from the Department of Music.

From 9 o'clock in the morning to 5 in the afternoon there will be a display of art works produced by the students in the Department of Art. This display will be held in the reading room of Jesse Hall.

At 4 o'clock in the afternoon will be held an "at home" at the President's House in honor of distinguished guests.

At 6 o'clock in the evening a Fine Arts Banquet will be given in the dining room of the Daniel Boone Tavern with distinguished visitors and speakers present.

At 9 o'clock in the evening, following the banquet, in the ballroom of the Daniel Boone Tavern, festivities will close with the annual Baux Arts ball.

Heads Chemistry Department

John L. Nierman, B.S. in Ed. '18, A.B. '19, A.M. '20, and Ph.D. '24, a member of Sigma Xi, is now Head of Chemistry Dept. Teachers College, Kingsville, Tex. He was formerly head of the Chemistry Department, Sweet Briar College, Sweet Briar, Va. He married Miss Augusta L. Muller, Augusta, Mo., in 1910. They have three daughters.

Pres. Brooks Speaks In Peoria, Ill.

President Stratton D. Brooks was one of the principal speakers at the inauguration of Dr. Frederick Rutherford Hamilton as President of the Bradley Polytechnic Institute, Peoria, Ill., on March 12.

Dr. Brooks said:

"The briefest consideration of educational statistics will show that the attendance in college and universities is increasing far more rapidly than are the appropriations and donations for these institutions. Furthermore, there is everywhere a great influx of students into high schools. Thousands of new high schools are being established and nearly all of those formerly in existence have increased in attendance for more rapidly than has the population in their respective cities. We may expect, therefore, a greatly increased demand for college education that will be coincident with a national demand for lower taxation.

"Unless many men and women of vision come to the rescue of both state and endowed colleges with liberal contributions higher education will be confronted with perilous times. A democracy cannot rise above its leadership, and to permit the best and most ambitious youths of America to spend the golden hours of opportunity in institutions dominated by prejudice or politics, or compelled by inadequate finances to offer but mediocre instruction is fraught with great danger for the future."



Dr. B. M. Anderson, Jr., A.B. '06, Economist of the Chase National Bank New York City.

Simpson Leaves M. U. for Iowa State

(Continued from Page 197)

Outdoor Records

60-yard high hurdles, 5 hurdles—Kansas City, March 16, 1917.

120-yard high hurdle, 10 hurdles—Columbia, May 25, 1916.

Co-holder 220-yard low hurdles, 5 hurdles—Columbia, May 25, 1916.

Co-holder 110-meter high hurdles—Stockholm, Sweden, Oct. 14, 1916.

220-yard low hurdles, around one turn—Chicago, June 9, 1917.

220-meter, 3 feet high hurdles, around one turn—Stockholm, Oct. 14, 1916.

Missouri Valley Conference record for running broad jump is held by Simpson with 23 feet 6¾ inches.

His record of dual and conference meets in 1915 is as follows:

| | Points |
|-------------------------|--------|
| Kansas (indoor)..... | 15 |
| Ames (outdoor)..... | 18 |
| Kansas Aggies..... | 18 |
| Kansas (outdoor)..... | 18 |
| Missouri Valley..... | 15 |
| Western Conference..... | 10 |

His record for 1916 is as follows:

| | Points |
|---------------------------------|--------|
| Kansas (indoor)..... | 15 |
| Ames (outdoor)..... | 20 |
| Kansas (outdoor)..... | 25 |
| Missouri Valley Conference..... | 15 |
| Western Conference..... | 10¼ |

In 1917 his record is as follows:

| | Points |
|---------------------------------|--------|
| Kansas (indoor)..... | 13 |
| Kansas (outdoor)..... | 23 |
| Ames..... | 23 |
| Missouri Valley Conference..... | 18 |
| Western Conference..... | 16 |
| Three winning 880 relays..... | 3¾ |

His total for three years in intercollegiate competition was 276 points.

Of the total number of possible points to be made during his time at Missouri, Simpson made 276, or 15 per cent, of them. The average number of points that he made in every contest amounted to 17¼, a remarkable record.

Local Y. M. C. A. Elects Officers

Kenneth R. Lancaster of Kansas City, a senior, popular track man, has been elected president of the local Y. M. C. A. for the coming year. Vance J. Julian, Clinton, was elected vice-president; Lawrence Mitchel, Macon, secretary; George Jackson, Columbia, treasurer.

Delegates to the state convention to be held at Hannibal on April 16-17 are: Stratton D. Brooks, president of the University, G. W. Hovey, general secretary of the Missouri Y. M. C. A., and Kenneth Lancaster.

Members of the board are: Jas. S. Summers and Harry K. Poindexter of Kansas City; P. E. Burton of St. Louis; C. R. Innis of St. Joseph; W. C. Logan, Hannibal; O. B. Poundstone, Sedalia; Dr. M. P. Neal, Chairman, E. F. Carter, Dr. C. W. Digges, Geo. H. Jackson, W. E. Smith, Stratton D. Brooks, A. K. Heckel, R. L. Hill, Stephen I. Langmaid, W. A. Albrecht, of Columbia. The student members of the board are: Jean Paul Bradshaw, Lorne G. Buchner, Cecil H. Coggins, Henry Depping, Elza Johnson, Vance J. Julian, Kenneth Lancaster, Lawrence Mitchell and George Schmick.

Kansas Refuses to Play 1926 Game on Thanksgiving Day

THE date for the game with Kansas this fall is Saturday, Nov. 20, according to C. L. Brewer, director of athletics. "Most Missourians will be disappointed that Kansas finally refused to schedule the game for Thanksgiving Day," said Director Brewer.

"The Athletic Committee and others interested in Missouri athletics studied the situation very carefully and were unanimously agreed that it was the desire of Missouri that the game be played on Thanksgiving Day. This wish of Missouri was then presented to the Kansas authorities, including Chancellor Lindley and Kansas authorities were urged to recognize this wish of Missouri and to agree to come to Columbia on Thanksgiving Day.

The request was made on the facts that since the game was on Missouri' field and practically the entire crowd would be Missourians that Kansas would accede to Missouri desire. In the minds of those in authority it seemed only the courteous and sportsmanlike thing for Kansas to do. The Kansas authorities, however issued a statement to Missouri that the Kansas team would not play on Thanksgiving Day next year. On receipt of this ultimatum the Committee on Intercollegiate Athletics unanimously adopted the following resolution:

"Although the Committee on Intercollegiate Athletics recognizes that the universal public sentiment of Missouri demands that the annual Missouri-Kansas football game to be played in Columbia in 1926 should be played on Thanksgiving Day, yet in view of present conditions the committee feels compelled to accede to the demand of Kansas that the game be played on the Saturday before Thanksgiving Day.

The Committee, however, while acceding to the demands of Kansas, wishes to express its resentment at the arbitrary attitude of Kansas, notwithstanding the fact that Missouri at the request of Kansas agreed that for the year 1925 the game should be played on the Saturday before Thanksgiving Day instead of the traditional date of long standing, Thanksgiving Day.

Although acceding to the demands of Kansas for the year of 1926 the Committee retains full liberty of action with respect to the date for the game in the future years and also as to whether a game shall be scheduled with Kansas at all."

"This probably closes the incident," said Mr. Brewer, "and if Kansas continues in her determined stand it means that the annual game with Kansas on Thanksgiving Day is a thing of the past. There has been some discussion of playing Kansas a regular Saturday game as they wish and perhaps see if it is possible to arrange some outstanding competition for Thanksgiving Day. A number of very desirable schools have indicated that they would be glad to consider a long time agreement with Missouri for Thanksgiving Day. Such an arrangement, however, would destroy

the tradition of more than three decades of playing Kansas the final game of the year. From a strictly football viewpoint, however, it might work out satisfactorily."

Alumni Engineers Re-elect Hamilton

J. L. Hamilton, B.S. in E.E. '04, of the Century Electric Company, St. Louis, was re-elected President of the Alumni Association of the College of Engineering at the third annual meeting March 19 during Engineer's Week in Columbia. Mr. Hamilton was the first President of this organization and has been re-elected from year to year due to his fine work. Professor L. M. (Daddy) Defoe was re-elected as the alumni representative on the Board of Directors of the General Alumni Association and Professor J. Roy Wharton was re-elected Secretary-Treasurer.

Dean E. J. McCaustland was the principal speaker at the meeting and outlined some of the activities of the work as it pertained to the welfare of the College of Engineering. Practically all the members of the College of Engineering faculty were in attendance at the meeting. Mr. Hamilton reported on the activities of the organization during the last year and Mr. Wharton made a report on the alumni directory of the College of Engineering,



J. L. Hamilton

that is now in the hands of the printer, and will be ready for distribution within a few weeks.

A resolution was passed expressing to President Stratton D. Brooks and to Dean McCaustland, the support of the Engineering Alumni Association.

Mr. Hamilton and his wife stayed in Columbia several days to visit with their two sons, who are students in the College of Engineering.



For the third time in its history, the presidency of the Phi Delta Theta fraternity of the University is held by a member of the same family. Jack English, a senior at the University, is president of the organization. He is the son of Mr. and Mrs. George H. English, 3137 Benton Blvd., Kansas City, Mo.

George H. English, the father, was president of the Phi Delta Theta chapter at Columbia in 1897-8. Edward, a son now living in Seattle, Wash., was president in 1923-4.

A. J. Accola, A.B. '15, C.E. '17, of the Andrews and George Company, Tokyo, Japan, sends the following story from the Japan Advertiser:

Tokyo's Metropolitan Police officials, whose proclivities for scenting plots are perhaps unequalled in any other city in the world, almost ran one down last week.

The official paper-reader of the force discovered in the newspapers that a Phi Beta Kappa Society, the honorary scholarship organization of American colleges, was being formed in Tokyo. Official noses sniffed, and the Special Plot Squad slid down their greased poles and were off in a trice to a Third Alarm Plot.

Leading figures of the mysterious Phi Beta Kappa Society were disappointingly easy to find. Would they explain, please, what Phi Beta Kappa meant? So? And were they sure no lese majeste was intended? And were the honorable officials sure no radical literature was being spread? And what language were these strange words, "Phi Beta Kappa"?

Greek! Ah, so! But there were no Greek members! (triumphantly). Then a long careful explanation—perhaps Phi Beta Kappa was never before so confronted with the why of its existence. Phi Beta Kappa had always taken itself for granted—until it reached Tokyo!

It was very strange indeed. Almost reluctantly the police went away, shaking their heads.

Two nights later a strange band wandered down the Ginza heaving bricks through the store windows.

It is very trying, yes, to be a police official in Tokyo. Is it any wonder that so many die young?

With the Alumni Associations

ST. LOUIS

Miss Marguerite Vellner, B.S. in Ed. '24, Sec'y of the St. Louis Alumnae Ass'n., 3300 Winnebago St., writes that their organization is taking on great proportions in its efforts to be of assistance to prospective students and to girls who are already enrolled in the University. The St. Louis Alumnae Association now has an active membership of over 50 and interest continues to grow. They are making plans now for their annual spring party for it is one of the biggest University alumnae parties held in St. Louis during the year. Regular meetings are held the first Friday in each month, but this program is varied with Saturday luncheons and evening buffet suppers in order that everyone may have an opportunity to enjoy the news from "Old Mizzou".

Bridge benefits have been held in the past to provide an annual scholarship fund. This year the St. Louis Alumnae association is trying a chain of luncheons instead. This series of luncheons was started in January by Mrs. Philip G. Drabelle, formerly Miss Lucille M. Klein, A.B. '16, B.S. in Ed. '19, president of the St. Louis Alumnae Association. The chain has grown steadily and by the end of the year the alumnae association hopes to announce the largest fund in the history of the organization. They are eager to cooperate with the W.S.G.A. or any other organization through which they may help the girls of the University.

The University Glee Club quartette composed of Messrs. Simon, Stokes, Abbott and Montgomery were the guests of the St. Louis Alumni and sang University songs to the crowd of University folk representing a score or more of colleges and universities. The quartette performed again at the dinner dance after the theatre party. The Missouri section in the theatre and at the dance was decorated with Missouri colors and banners.

The St. Louis Alumni Association has completed plans for the visit of the Glee Club to St. Louis April 10, Odeon which is to be a formal alumni party. This is an unusual affair sponsored by the alumni of St. Louis and an outstanding feature on their yearly program of events.

The following are committee chairmen for the April 10th Glee Club Concert: Ernest Staude, publicity; E. W. Clausen, boxes; Warren Browne, High Schools; Frank Hoffman, ticket distribution.

The arrangement committee is composed of: President Finley, chairman, Chas. B. Davis, John T. Garrett, John C. Hall, Franklin Miller, Cleveland A. Newton, Tom K. Smith.

Dr. Jay W. Hudson of the University

will address the St. Louis Alumni Founder's Day dinner meeting on April 19, at Dorr and Zellars. Officers for the coming year will be elected.



Marguerite Vellner

The St. Louis Alumni Association brought prominence and fine publicity to the University on College Club night at the performance of George Arliss in "Old English" on March 15.

Arrangements were in charge of President Arnot M. Finley, Secretary Frank Hoffman and E. W. Clausen, Rate Attorney for the Southwestern Bell Telephone Company.

St. Louis Engineers

The St. Louis Engineering Alumni Association, Truman Elder, Sec'y., held its annual pre-St. Pat's dinner meeting in the Chamber of Commerce Building, February 19. Sixty of the engineering alumni with green blood in their eyes sang University songs and St. Pat ditties, under the leadership of Roy G. Jaeger.

Chriss Kraft, the President, presided. Professor L. M. (Daddy) Defoe was the first speaker, beloved by every alumnus and former student, called for a warmer sort of a reception by the engineers.

Other speakers were: C. M. Talbert, '94, Columbia; James W. Skelly, B.S. in C.E. '96, C.E. '98, whose son, Howard, is President of St. Pat's this year; C. C. Robinson, B.S. in E.E. '04, C. W. Martin, B.S. in C.E. '05, C.E. '09, Frank Kidd, B.S. in E.E. '06, Professor Roy Wharton of the Mechanical Engineering Department Harry E. Frech, '05-'09, Allen B. Wilder, M. E. '12, Grant Wyatt, B.S. in Eng. '17, Roy H. Jaeger, B.S. in Ag. '23, and Dean E. J. McCaustland of the College of Engineering, the honor guest of the occasion.

The Homecoming motion pictures were shown and all in all the meeting was an outstanding success and everybody had a dandy time and interest was created in the

KANSAS CITY

The Kansas City Alumni Association held a luncheon on April 16 at the University Club with 90 in attendance to hear an address by Dr. J. W. Hudson of the University on "The Duties of an Alumnus to His Alma Mater." This luncheon was the first of a monthly luncheon plan inaugurated by Harry B. Walker and James E. Wilde, President and Secretary of the organization and they will keep up these luncheons in order that the hundreds of alumni and former students of Kansas City may have opportunity to meet once a week to talk over University matters.

President Walker has completed arrangements for a Missouri Glee Club concert in Kansas City on April 7, 9 Muehlebach Hotel, with the idea of making this an annual party. Glee Club members will sing at the Kansas City high schools, a dinner dance will be given and the Glee Club program will be broadcast from the Kansas City Star's station.

President Walker and Miss Elsa Bradley president of the Alumnae Association, are handling the Glee Club concert arrangements. They plan to make this the greatest Missouri jubilee ever held in Kansas City.

DENVER

The Denver Alumni Association, under the leadership of Art Hailey, B.J. '22, of the Welch-Haffner Printing Co., and Lawrence (Larry) DeMuth, A.B. '20, A.M. '21, LL.B. '24, are holding weekly luncheon meetings in the Blue Room of the Albany Hotel, every Monday, where a table is reserved for them and a huge leather gold and black "M" is mounted on their table.

All of the alumni in and around Denver have been notified of this weekly luncheon meeting and each week the boys report an increased attendance. Alumni and former students in Colorado should take particular notice of this plan inaugurated by Larry and Art, and help make this weekly luncheon meeting an outstanding affair among Missouri alumni in Denver. This furnishes a fine opportunity to keep up acquaintanceship and enthusiasm, and for cooperative support of the University. Larry DeMuth is now associated with Frank C. West, formerly of the Colorado Attorney General's office, in the practice of law.

minds of the alumni relative to University and campus affairs.

The following officers were elected: President, C. W. Martin; Vice-President, Chriss H. Kraft; Secretary Chas. C. Robinson.



C. W. (Chappy) Martin, B.S. in C.E. '15, C.E. '09,
President of the St. Louis Engineers Club.



Mrs. Robert M. Dewey, formerly Miss Belle
Felton, A.B. '22, twice elected to Common Council
of Northampton, Mass., the first woman member



Patty Lou, daughter of J. R.
Wilks, '11, and Mrs. Wilks,
formerly Pearl Rhodes, B.S. in Ed.
'16, Oak Park, Illinois.



Billie Bruce, son of F. B. Veatch, Jr.,
B.S. in Ed. '21, postmaster, Braymer, Mo.
He married Miss Hallie B. Ewing of
Gorin, Mo.



Barbara Jean Maffry, daughter of
Gordon Maffry, A.B. '20, Hartford,
Conn.



C. C. Robinson, B.S. in E.E. '04, secretary-treasurer
of the St. Louis Engineering Alumni Association, and
superintendent of electric power plants, Union Electric.



Patricia Maurine, daughter
of Mr. and Mrs. V. W.
Johnson, formerly Bernice
McClain, B.S. '19, Cedar
Falls, Ia.



Henning W. Prentis, Jr., A.B. '03, sales manager
of the Armstrong Cork Co., Lancaster, Pa.

DALLAS

H. W. Prentiss, Jr., A.B. '03, Phi Beta Kappa, Sigma Alpha Epsilon, sales manager of the Linoleum Division, Armstrong Cork Co., Lancaster, Pa., was the guest of honor and principle speaker at a dinner given by the Dallas, Tex., alumni association at the University Club there on February 23. Mr. Prentiss was in Dallas making a series of advertising addresses. Alfonso Johnson, B.J. '22, of the Dallas News, was in charge of the meeting and presented corn cob pipes as favors remembering that February 23 was corn cob pipe day in Missouri.

"I give these pipes," said Alfonso, "to bind you members to the president, and the more you use the tie the stronger it will become."

Missouri songs and yells greeted Mr. Prentiss. Those present were: Melvorne J. McCombs, W. E. Emerson, F. K. McGinnis, Homer R. Mitchell, J. Sloane McCauley, Leake McCauley, Herbert W. Smith, D. C. Anderson, Steve Barker, Harry D. Guy, and W. R. Herring.

CHICAGO ENGINEERS

By John W. Rowley, secretary

The first meeting in 1926 of the Missouri Engineers of Chicago was held on Jan. 13, at the Central Y.M.C.A. Nineteen former students of the school of engineering were present. W. C. Wheeler, '21, was re-elected as president, L. W. Brittingham, '24, was elected as vice-president and J. W. Rowley, '21, as secretary. A special meeting was held at the same place on Feb. 11.

We had a big meeting on March 16, the evening before the opening of the St. Pat's celebration and Engineers' Week at the University.

The Missouri Engineers of Chicago are always glad to get in touch with any former student who may come to the city and are especially anxious to render any assistance they may to the men graduating each year in looking for positions. Get in touch with the secretary at 1243 Railway Exchange Building, Jackson and Michigan, or W. C. Wheeler, Chicago Surface Lines, 3901 West End Avenue.

Giltner Ingels, '21, has recently come to Chicago from California and is living at 207 Plum St., Aurora, A. K. Buhsman was a new man at the meeting in February. Harold Hardaway, '22, who has been in New York City for the past year with the U. S. Gypsum Co., has returned to Chicago.

Miss Beulah W. Anderson, A.B. '16, is teaching in the Sedalia High School, Sedalia, Mo.

J. H. Aydelotte, A.M. '23, is an instructor, care of Sam Houston State Teachers College, Huntsville, Tex. He married Miss Harriet Penner in 1921.

Miss Blanche Hudson, A.B. & B.S. '24, Phi Beta Kappa, Pi Lambda Theta, is teaching in the High School at Grants Pass, Ore.

Christian College President Resigns.

Edgar D. Lee, A.B. '08, B.S. in M.A. '09, Phi Delta Kappa, President of Christian College, resigned on March 23rd, to take effect at Commencement time in June. He will enter business.

In 1910 he married Miss Vernetta Barkley, A.B. and B.S. '09, Phi Beta Kappa of Mexico, Mo. They have two children, Virginia, fourteen and Edgar Desmond, Jr., eight years.

Mr. Lee entered the teaching profession



immediately after being graduated serving in turn as superintendent of the schools in New London and Sikeston. In 1918 he came to Christian College as teacher of history and psychology. In 1919 he became vice-president, and in 1920 he succeeded Mrs. L. W. St. Clair Moss as president.

Executive Board Meeting

The Executive Board of the University met in St. Louis on March 27. The following business was transacted:

The following appointments have been made in the School of Medicine:

Dr. Hugh P. Muir, Lecturer in Physical Diagnosis, Dr. Richard S. Battersby, Lecturer in Pediatrics.

The title of Dr. August W. Kampschmidt has been changed to "Urologist and Radiographer in the University Hospitals."

Dr. Walter Williams, Dean of the School of Journalism, has been granted Leave of Absence during a portion of September and October 1926, for the purpose of attending the Press Congress of the World.

Sabbatical leave of absence has been granted to the following persons for the year September 1, 1926, to September 1, 1927:

Mack M. Jones, Associate Professor of Agricultural Engineering, Charles W. Turner, Assistant Professor of Dairy Husbandry.

Mrs. Bessie Leach Priddy, Dean of Women, has been granted leave of absence for the year September 1, 1926, to September 1, 1927, for the purpose of travel and study in Europe.

Herbert Blumer, Instructor in Sociology, has been granted a continuation of his leave of absence from September 1, 1926 to September 1, 1927.

Four new extension courses were established at Licking, Missouri, the instruction to be given by Messrs. Samuel H. Lloyd, Jr., and Charles J. Miller, members of the Faculty of the School of Mines at Rolla, Missouri.

Erskine M. Harmon, has been promoted from the position of Extension Associate Professor of Dairy Husbandry to the rank of Extension Professor of Dairy Husbandry.

The degree of Bachelor of Science in Education has been awarded to the following named persons who completed the work at the close of the first semester of the session 1925-26: Alberta Andrews, Helen Agnes Beck, Minnie Pearl Bozarth, Willie Crews, Dora E. Emmons, Nancy Mary Gibbs, Katherine W. Lamson, Madge Widner Lewis, Lois Luckhardt, Ola Mae Norris, Susan G. Peter, Rusey A. Petty.

The following scholarships and fellowships have been awarded for the year 1926-27:

Gregory Scholarships: Nola Lee Anderson (of Bucklin, Missouri), Mathematics; Harvey De Weerd (of Holland, Michigan) History; Howard Adorno Powers (of Brookings, S. D.), Geology; Grace Griffin (of Fulton, Missouri), Education; Harold Donald Griffin (of Fulton, Missouri); Education; George Cramer (of Rayville, Missouri), Physics; Eugene E. Seubert (of Galena, Illinois), English; Carl Colton Branson (of Columbia, Missouri), Geology.

Honorary Fellowship: William L. E. Shane (of Enid, Oklahoma), Sociology.

Volker Scholarship in Social Service: Lillian Alden Hart (of Danville, Kentucky), Sociology.

Agricultural Research Scholarships: Rudolph Rhadamanthus Conrad (of Marble Hill, Missouri), Horticulture; Jennings Harold Long (of Wellsville, Mo.), Horticulture; Eugene L. Kelly (of Columbia, Missouri), Field Crops; William C. Shotwell (of Richmond, Missouri), Agronomy; Gladys Mullenburg (of Palco, Kansas), Rural Sociology; Lester Earl Casida (of Chula, Missouri), Animal Husbandry; John Randolph Paulling, Jr. (of St. Matthews, South Carolina), Dairy Husbandry.

Peabody Fellowship in Education: William Henry Zeigel, Jr. (of Kirksville, Missouri), Education.

At its meeting in January 1926, the Board took action offering annually to the State Teachers Colleges, the Kansas City Teachers College and St. Louis Teachers College, to all Colleges who are members of the Missouri College Union, and to the Junior Colleges in the State, five scholarships, in each college, available to the faculty only, each scholarship to cover the library, hospital and incidental fee of the Summer Session. In each of the following mentioned colleges, the number indicated has already taken advantage of this offer:

| | |
|--|---|
| Hardin College Mexico, Missouri..... | 1 |
| Central College, Fayette, Missouri..... | 2 |
| William Woods College, Fulton, Missouri..... | 2 |
| Stephens College, Columbia, Missouri..... | 1 |
| Christian College, Columbia, Missouri..... | 1 |
| Junior College of Kansas City..... | 1 |

To the Members of the Association of American Universities:

In accordance with the vote of the Association I am sending you the following preliminary list of persons nominated for fellowships and scholarships in the Graduate School of the University of Missouri for the year 1926-27.

Very truly yours,
ROBERT J. KERNER
Acting Dean.

GREGORY SCHOLARSHIPS: Mathematics—Nola Lee Anderson, University of Missouri, 1919-22; 1925-26 B.S. in Ed., 1923 (as of class of 1922) A.M., 1926.

Geology—Carl Colton Branson, University of Missouri, 1923-26 A.B., 1926.

Physics—George Cramer, University of Missouri, 1923-26 A.B., 1926.

History—Harvey De Weerd, Hope College, 1920-24 A. B., 1924, University of Michigan, 1924-25 A.M., 1925.

Education—Grace Griffin, Keuka College, 1913-

Now page 224 please.



Roy Eblen, Jr., six years old, and Claudia, four years old, children of Mrs. Roy E. Eblen, '12, Pi Beta Phi, formerly Lena Mary Johnson of Mexico, Mo., now living at 3904 Douglas, Wichita, Kans. She married Roy E. Eblen of Wichita, in 1916.



Clark-Driver

Miss Blanche Clark and Jesse W. Driver, both students in the University, were married on March 15. Mr. Driver is enrolled in the School of Medicine and will continue his studies.

Showers-Symon

Benjamin G. Symon, famous glee club tenor, St. Joseph, Delta Upsilon, and Mrs. Bess Carter Showers, Alpha Gamma Delta, of Waters, Okla., both students in the University, have announced their engagement. The wedding will take place this summer.

Hall-DeArman

Miss Bess Hall, and Thomas Milton DeArman, former student '22-'24, Sigma Phi Epsilon, both of Norman, Okla., were married on February 27.

Grinstead-Waters

Miss Elizabeth Grinstead, B. S. '24, of Columbia and Richard E. Waters, B.S. in Ag. '25, Alpha Gamma Rho, Spartanburg, S. C., were married on March 19. They will make their home in Spartanburg.

Harbaugh-Colvin

Miss Marjorie Harbaugh, '23, Pi Beta Phi, and Russell N. Colvin, A.B. '24, Sigma Chi, both of Kansas City, have announced their engagement. The wedding will take place in June.

Livingston-Gage

Miss Dorothy D. Livingston of Muskogee, Okla., and W. S. Gage, '17-'19, City Editor of the Muskogee Daily Phoenix, were married on February 14. They are now at home at 200 South Tenth Street.

Gibbons-Brown

Tom B. Brown, a senior in the School of Law from Edina, Mo., Pi Kappa Alpha, Phi Alpha Delta, Tomb and Key, and Miss Isabella Gibbons, also of Edina, were married on February 13. They are at home at 1615 University Avenue.

Frank-McCandless

Miss Maurine Frank, '21-'24, Pi Beta Phi, and Howard L. McCandless, '23-'24, Sigma Alpha Epsilon, both of Kansas City, were married in March. They will be at home after March 15 at St. Petersburg, Fla., where Mr. McCandless is engaged in the real estate business.

Johnson-Godsey

Capt. Roy Godsey, '06, Phi Gamma Delta, of the staff of the Adjutant General of Jefferson City, Mo., writer of Missouri history, was married on Feb. 27, to Martha Johnson, Governor Baker's stenographer.

Morris-Hewitt

Arthur M. Hewitt, '04-'08, Phi Gamma Delta, son of Mr. and Mrs. William K. Hewitt who formerly lived in Columbia, has announced his engagement to Miss Peggy Morris of Milwaukee. Mr. Hewitt has been active in alumni affairs and Memorial work in Milwaukee.

Robnett-Tyler

Miss Lillian Robnett, and Thomas Y. Tyler, '21-'24, both of Stephens, Mo., were married on March 5. They will make their home on a farm near Stephens.

Ingrum-Edelmann

Miss Grace Ingrum, former student, '08-'11, Columbia, and Louis A. Edelmann, superintendent of the Chance Manufacturing Co., Centralia, were married on March 8.

Roach-DeMuth

Miss Eugenia Roach, A.B. '21, Kansas City, and Laurence W. (Larry) DeMuth, A.B. '20, A.M. '21, LL.B. '24, Phi Delta Phi, Mystical Seven, Student President '23, have announced their engagement. Mr. DeMuth is now practicing law in Denver, Colo. The wedding will take place in the early spring.

Warren-Johnson

Lowell R. Johnson, LL.B. '23, Acacia, Phi Delta Phi, member of the law firm of Shughart, Johnson and Miller, Kansas City, and Barbara Warren, A. B. '24, Delta Gamma, were married on December 10, 1925. They are living at 508 E. 44th Street, Kansas City.

Many Alumni in Oklahoma.

Chas. E. Mannschott, A.B. '25, is now assistant auditor for the Central Division of the Oklahoma Gas and Electric Co., Box N, Sapulpa, Okla. He was a member of the Savitar Staff for four years, assistant editor in '25, a member of the Varsity debating squad and president of the student body of the School of Business and Public Administration and student assistant in the Department of Economics and Commerce. He is a member of Phi Beta Kappa and Kappa Sigma.

He writes: "Snowden M. Hunt (about 1909), Kappa Sigma, formerly in the investment business in Kansas City, is now Manager of the Securities Department in the Southwestern Light and Power Company and affiliated companies, with headquarters at 517 Braniff Building, Oklahoma City, Oklahoma. Rens W. McClure, Pi Kappa Alpha, '15, Student President, QEBH, etc., is Purchasing Agent for the same organization.

Clyde Smith, '25, ex-football captain, etc., Sigma Phi Epsilon, President Senior Class, etc., is athletic director at Sapulpa High School, Sapulpa, Oklahoma.

Dan G. O'Dell '25, Sigma Alpha Epsilon, is enrolled in the law school at the University of Oklahoma.

Al Steen, former student, Phi Gamma Delta, is attending the University of Oklahoma, where he is enrolled in the School of Journalism. At Missouri he was Editor of the Showme, and was co-author of several of the Journalism musical comedies. At Oklahoma he was editor of the Whirlwind, and wrote the book and lyrics for a musical comedy, "Hasten, Jason."

Harold E. Roberts, former student, Kappa Sigma, is enrolled in the Commerce School at the University of Oklahoma.

Louis Brodnax, former student, Pi Kappa Alpha is enrolled in the School of Engineering at Oklahoma University.

Ray England, former student, Phi Delta Phi, is enrolled in the Law School at the University of Oklahoma.

Morris L. Head, former student, is enrolled in the Commerce School at the University of Oklahoma. He was formerly a member of the Student Council at Missouri.

Junior Farmers' Week April 27-30.

Junior Farmers' Week will be held in Columbia April 27-30, according to T. T. Martin chairman of the committee in charge of the program. The program will consist of a section for vocational agriculture students in high school and a section for boys' and girls' 4-H club members. The high school Field Day events and Farmer's Fair, the biggest student stunt in America, will be held that week-end.

Little Rock

The Little Rock, Ark., Alumni Association will hold their annual spring meeting at the Marion Hotel on Monday, April 5, according to an announcement just received from G. M. (Cracker) Craig, president of the Alumni Association. All of the alumni in Arkansas have been invited to attend the meeting. University of Missouri motion pictures will be shown at the meeting and to the students of the Little Rock schools.

The Missouri Alumnus

Established 1912



R. L. (BOB) HILL, Editor and Manager

Officers Of The University Of Missouri Alumni Association.

Frank B. Rollins, LL. B. '11, Columbia, President. G. E. Huggins, B. L. '98, New York City, First Vice-president. Mrs. Chas. Hebard, B. S. in Ed. '14, A. M. '19, Joplin, Mo., Second Vice-president. R. L. (Bob) Hill, B. S. in Ag. '12, M. S. '13, Columbia, Secretary. S. F. Conley, A. B. '90, Columbia, Treasurer.

Board of Directors composed of representatives of Alumni Associations of Divisions in the University; Agriculture, T. J. Talbert, Columbia, Mo.; Engineering, L. M. Defoe, Columbia, Mo.; Law, Kenneth Sears, Columbia; Education, F. H. Barbee, Kansas City; Arts, Frank Chambers, New York City; Journalism, J. Harrison Brown, Mexico; Business and Public Administration, Royal D. M. Bauer, St. Louis; Medicine, Dr. A. W. Kampschmidt, Columbia; Graduate, Ralph Watkins, Columbia.

Subscription to the Alumnus is \$3 a year. Life Subscription is \$45.

Changes of address should be received by the Missouri Alumnus before the fifteenth of the month to insure prompt delivery of the magazine for that month.

Checks, drafts and money orders should be made payable to the Missouri Alumnus and all business correspondence should be so addressed. Address all news items to the Managing Editor of the Missouri Alumnus, 114 Jesse Hall, Columbia, Mo.

Should a subscriber wish to discontinue his subscription, notice to that effect should be given before its expiration. Otherwise it is assumed that a continuance of subscription is desired.

Member of Alumni Magazines Associated.

ALUMNI ADVERTISERS

While it is apparently unnecessary to remind the alumni continually that they should show appreciation to ALUMNUS advertisers, it does not hurt to call their attention to this important matter now and then. You will note that a goodly number of Columbia Merchants advertise in every issue of the ALUMNUS with the sole idea of helping the publication in the work that is set out for it to do and with the idea of being of help to the alumni. It is therefore the duty of alumni to cater to ALUMNUS advertisers. Are you doing this?

Correct Addresses

Alumni are more and more acquiring the custom or habit or both of notifying the Alumni Recorder's office, 217 Jesse Hall, when they change addresses, when they change business or receive a promotion or honor. This is very important. The task of keeping a correct mailing list of our thousands of alumni and former students is a tremendous one and can only be accomplished by the prompt and thoughtful cooperation of the alumni themselves.

It is necessary that we have the correct addresses of the alumni. Your help is solicited.

THE FARMERS FAIR

Ags attention—old ags and young ags. The twenty-first annual Farmers Fair will be held on April 30. Tom J. Powell, is manager, A. T. Mullens, assistant manager, Carl Ross, secretary-treasurer and Millard F. Rushton, assistant secretary-treasurer. Every old ag is expected back—former managers are to attend the Ag Club meeting at seven-thirty on Thursday night, April 29, Stock Judging Pavilion, the night before the Fair. Something unusual is being prepared to convey the former managers in the parade. Past managers will have a luncheon at Harris' immediately after the parade, Bob Hill, chaperon, followed by an informal visit to the home of Dean Mumford. Everybody back—this will be a big week-end in Columbia for high school day events are scheduled then.

Class Reunions

Commencement class reunions are again calling you to attend. Our limited funds do not permit us to send out a lot of circular material and all members of these reunion classes are depended upon to read these reunion notices diligently and to take heed.

The following will hold reunion at Commencement time in June: 1916, 1915, 1914, 1913, 1912, 1896, 1895, 1894, 1893, 1877, 1876, 1875 and 1874.

Alumni Day will be announced later and on that day we want the greatest number of alumni in Columbia that has ever been here at any previous Commencement time. We can only do this with your cooperation.

Alumni assistance and cooperation is needed at all times. Your help is solicited. We want you to come back and visit the University and become acquainted with all of its needs.

Make your plans now to be here on Alumni Day and for your class reunion.



Dr. James E. Stowers, A.B. '10, A.M. '11, Sigma Nu, and Mrs. Stowers, formerly Miss Laura Smith, A.B. '21, of Kansas City, announce the birth of a son, Richard West, on March 7.

Mrs. Richard H. Merriman, formerly Miss Gladys Louise Wall, '15-'20, and Mr. Merriman, 200 W. 50th Street, Kansas City, announce the arrival of a son.

Maynard Lee Durham, '24, 601 Graphic Art Building, Kansas City, and Mrs. Durham, formerly Miss Mary Josephine Williams, announce the birth of a daughter Elizabeth Lee, on Feb. 14.

Bernard D. Simon, C.E. '10, Tau Beta Pi, Memorial Tower Contractor, and Mrs. Simon, formerly Miss Edith R. Hullett, announce the arrival of a son, William Hutton, on March 15.

John C. Blankenagel and Mrs. Blankenagel, formerly Miss Caroline Jesse, A.B. '07, B.S. in Ed. '08, A.M. '09, of Delaware, Ohio, announce the arrival of a daughter on March 9.

Stanley Sisson, B.S. '05, A.B. '06, and Mrs. Sisson, announce the arrival of a daughter, Elizabeth Anne on March 11. Mr. Sisson is one of the proprietors of Harris' Catering Company.

Guy M. Wood, and Mrs. Wood, formerly Miss Tressa Wright, '09, 1744 N. Euclid Avenue, St. Louis, announce the arrival of a son, on Jan. 1.

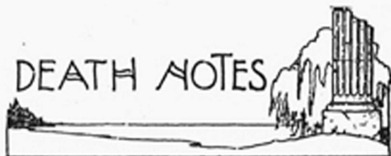
Horace D. Payne, A. B. '17, Kappa Alpha, Phi Delta Phi, and Mrs. Payne, formerly Miss Gretchen M. Dunaway of Sikeston, Mo., announce the birth of a daughter, Suzanne, at their home, on Feb. 13. Mr. Payne is the law partner of John Hudson, A.B. '20, with offices at 302 Commerce Bldg., Kansas City, Mo.

Clifford W. Michaels, and Mrs. Michaels, formerly Miss Catherine Tummy, '14-'19, of Okmulgee, Okla., announce the birth of a son, Clifford W. Jr., on Feb. 26.

O. E. (Dick) Allen, B. S. in Ag. '24, Alpha Gamma Sigma, and Mrs. Allen of Harrisonville, Mo., announce the arrival of a son, Richard Gilbert, on Feb. 19.

Edwin W. Allen, and Mrs. Allen, formerly Miss Kathryn Campbell, B.J. '23, of Montclair, N. J., announce the birth of a son, Edwin Woodward, Jr., on March 10.

Frank L. Wilkinson, A.B. '10, LL. B. '11, Yale, Phi Beta Kappa, Phi Delta Phi, and Mrs. Wilkinson, formerly Miss Frances Shryock, announce the birth of a son, Frank Lee III, on March 7 at their home, 3815 Genesee, Kansas City. Mr. Wilkinson is a member of the law firm of Wilkinson, Wilkinson & Dabbs, 706 Commerce Building. He was the democratic nominee for speaker in the third session of the Missouri State Legislature in 1919.



Col. Joseph Frazier

Col. Joseph Frazier, Pe. P. '85, commandant of University cadets from 1905 to 1909, was found dead on March 13 in Hawthorne, Nev. Col. Frazier's home when a student was Rolling Home, near Huntsville, Mo. He joined the U. S. Army in 1886 and served as an officer for more than thirty years. Col. Frazier retired from active service several years ago.

On April 22, last, he was presented with the Distinguished Service Cross in Columbia for bravery during the Boxer Uprising in 1900. While commandant he took the entire University corps of cadets to Jamestown Exposition.

Colonel Frazier married Miss Mabel Bagby in 1891.

He had been out West for his health. He is survived by his wife, who lives at Roanoke, Mo., four sisters, Mrs. Milton Goodings of Huntsville, Mrs. J. F. Harlan of College Mound, Mo., Mrs. W. L. Beard of Moberly, and Mrs. Roy King of Fulton; two brothers, Dr. W. L. Frazier, of Boise, Idaho, and Dr. Leland Frazier of Rupert, Idaho; one niece, Aubey Gooding, a student in the University; and a nephew Joseph Frazier, a student in Kemper Military School.

Luke Evans

Luke Evans, S.B. '67, Athenaeon, born April 23, 1848, near Florissant, St. Louis County, Mo., died Feb. 19th., at his home in Webster Groves. After graduating from the University, Mr. Evans taught in the public schools in St. Louis County and later went to work for the Missouri Pacific Railroad Co., where he remained for 41 years. In March 1925 he retired on a pension due to ill health. Mr. Evans was a bachelor, and leaves a brother, James Robert Evans, S.B. '67, S.M. '78, who is now with the Chicago Peoria & St. Louis Railroad, and a sister, Mrs. Mary H. Bassett.

Viola M. Talbot

Viola M. Talbot, B.S. in Ed. '24, died at her home in Garden City, Mo., March 3 of Bright's Disease.

Mrs. James W. Brown, Jr.

Mrs. James W. Brown, Jr., formerly Miss Thelma A. Pitz, died unexpectedly in New York City on March 3. Mr. Brown is a former student of the School of Journalism and is a member of Sigma Chi. They were married in May, 1925, and a daughter Thelma Matil was born on Jan. 26, last.

Jane Joslyn

Jane Joslyn, the three-year-old daughter of Clyde L. Shepard, Ag. '10, and Mrs. Shepard, formerly Evelyn Anne Joslyn, B.S. '17, died of pneumonia at the home of her parents in Columbia on March 11. Mr. and Mrs. Shepard have one other child, Evelyn Frances.

Walker Bascom

Walker Bascom, B.S. '81, LL.B. '82, Attorney, Odessa, Mo., born October 22, 1852, died in Fulton on March 9, after an illness of several months. Two brothers and one sister survive; Sam Bascom of Bates City, Frank Bascom and Mrs. John Kirkpatrick of Odessa.

Is Instructor of English at Delaware U.

William E. Matthews, (Peter) A.M. '22, Sigma Upsilon, Theta Alpha Phi, recently resigned as instructor in English at Yale University to accept an assistant professorship in English literature at the University of Delaware. His address is Purnell House, Newark, Del.

Virgil Sylvester Beck, B.J. '17, Kappa Sigma, Sigma Delta Chi, formerly of Memphis, is now with the Texarkana (Tex.) Gazette.

WHAT THE OLD GRAD IS DOING



Roy C. Maupin, Ag. '19, of the Blue Valley Creamery Co., has moved from Chicago to Kansas City, Mo., c/o the same Company, 501 W. 25th Street.

Ralph H. Baxter, B.S. in Eng. '21, Tau Beta-Pi is with the Southwestern Bell Telephone Co., St. Louis. He married Miss Clara M. Maller of Dawn, Mo., in 1920. They have one daughter.

John R. Dey, conductor on the M.K.&T. branch train, "The White Dove" between Columbia and McBaine has recently completed forty years as conductor on the Katy.

Nathan E. Jacobs, B.J. '24, Bozell and Jacobs advertising agency, Omaha, Phil Mayer, A.B. '20, of St. Louis and Harry Schwimmer, LL.B. '23, of Kansas City, visited the University in March.

Edward (Ned) O'Brien, Jr., '10-'12 is Vice-President and General Manager of the Jackson Lumber Co., Jackson, Miss. He married Miss Sallie Campbell of Lexington, Mo., in 1916. They have one daughter.

James A. Jackson, A.B. '10, Sigma Nu, vice-president of the National City Bank, New York City, visited in St. Louis and Kansas City during March, with the president and vice-president of that bank on a tour of twenty states, studying industrial and economic conditions.

J. Harrison Brown, B.J. '14, sales manager of the A. P. Green Fire Brick Co., Mexico, Mo., recently returned from Havana, Cuba, where he met O. A. Solis, '13, Kelvin Engineering Company; O. P. Rothmeyer, B. S. in Eng. '21, M. E. '22, Cubana De Electricidad and C. A. Whipple, B.S. in E.E. '12, Assistant Chief Operating Engineer, of that Company. Brown brought a personal message from these three alumni to Dean E.J. McCaustland of the College of Engineering during Engineers' Week.

Dr. C. J. Blackburn, M.D. '83, of Blackburn, (Saline County) Mo., who has been in Phoenix, Ariz., Arizona Hotel, for several months for his health writes that he hopes to be back in Missouri by the first of April.

Robert H. Theilmann, S.B. '83, S.M. '92, public inspector of weights and measures for Arizona, Riley W. Geary, B.S. in Ed. '24, Union High School, Phoenix, and Pryor C. Miller, A.B. '04, of Buckeye, Ariz., have called on Dr. Blackburn. They had a great "chinning" match. Dr. Blackburn and Mr. Miller boarded at the same house, just east of the old Hayden Opera house on Broadway, the last year they were in school.

Eugene D. Ashbrook, B.S. in B. A. '25, is now connected with a bank at Carrollton Mo.

Eleanor Long, A.B. '22, has changed her address from Kansas City to St. Joseph Mo., 1018 Ashland Court.

Benton M. Lee, A.B. '23, M.A. '24, has just returned to America and is in the bond department of the Harris Trust & Savings Bank, Chicago, Ill.

Byron Cosby, A.B. '04, B.S. '06, A.M. '10, of the State Teachers' College of Kirksville, President of the Rotary Club there, visited the University in March.

William M. Asquith, B.J. '18, Kappa Alpha, address is 404 Wall Street, Muskogee, Okla. He married Miss Mildred Wrigley in 1920. They have one daughter.

Judith Ann Gilbert, B.J. '22, Kappa Kappa Gamma, Theta Sigma Phi, is research assistant in the department, Fox Studios, 4843 Rosewood Avenue, Los Angeles, Calif.

R. F. Grady, C.E. '84, is Vice-President and Manager of the St. Louis Terra Cotta Co., 4417 Oleatha Avenue, St. Louis. He married Miss Minnie M. Wilkinson in 1898. They have two sons.

Dr. Harry C. Lapp, A.B. '21, Acacia, surgeon at 1812 Federal Reserve Bank Bldg., Kansas City, Mo., visited the University in March. His sister, Mary, wife of Dr. F. R. Viereg, Delta Gamma, is living at 624 11th St., Oklahoma City, Okla.

Dr. Howard Taylor, Dean of the Oklahoma College for Women at Chickasha, and his wife, formerly Mary Wharton of Columbia and their daughter Katherine Ellen, visited their parents in Columbia in March.

Bert A. Williamson, B.S. in E.E. '07, Electrolysis Engineer of the Los Angeles, (Calif.) Gas and Electric Co., is the author of "Protection of Underground Pipes" in March issue of the "L. A. Service Review". Mr. Williamson married Minnie Kenyon, of Maitland, Mo., in 1902. They have five sons and one daughter.

Francis (Brick) Wornall, Agri. '16, S.A.E., who has been associated for many years with R. B. Jones and Sons, Insurance Underwriters and Engineers, Kansas City, Mo., has been made manager of that Company's new south-side office in the Tower Building, Country Club Plaza, 116 W. 47th St.

Miss Mabel B. McClure, former student '10 and '13, Public Library, Kansas City, Mo., is organizing parties for Overseas Tours this summer. A trip to Europe is the greatest recreation because it is a change of life and scenery. Any alumnus contemplating a trip abroad should consult Miss McClure, if you want a real joy ride through Europe at minimum expense and greatest comfort.

Mrs. Merrill E. Otis, A.B. '12, A.M. '13, formerly Miss Sophia Hersch, wife of Judge Merrill E. Otis of Kansas City visited the University in early March relative to the work she is doing for a Doctor's degree.

Fred E. Miller, B.S. in Ag. '12, T. N. E., Alpha Gamma Rho, is assistant director North Carolina Experiment Station, Raleigh. He married Miss Marian Brown, Charleston, S. C., in 1918. They have one son and one daughter. Mr. Miller was a former resident of Columbia.

Hattie M. Anderson, B.S. '17, A.M. '20, Clio Club, Phi Lambda Theta, is Associate professor of History, West Texas State Teachers College. She writes "I do not want to miss a copy of the ALUMNUS because it enables me to keep in touch with the University and the old grads as I would not be able to do otherwise."

Judge E. S. Gantt, LL.B. '85, Judge of the 11th Judicial circuit court, Mexico, Mo., visited the University in March. He is a democratic candidate for the Supreme Court. Judge Gantt married Miss Helena Pettigill in 1918. They have one son and one daughter. He was formerly Prosecuting Attorney of Audrain County and City Attorney of Mexico.

Guy Kirksey, '09-'14, Beta Theta Pi, first lieutenant, Air Service, Manila, will leave on May 4 for Washington D. C., by San Francisco and Panama Canal where he will assume duty in the office of the Chief of Air Service. Guy is counting on attending the Homecoming Missouri-Kansas football game here this fall when the Memorial Stadium will be dedicated.

David M. Warren, B. J. '17, Kappa Tau Alpha, recently joined with two others in the purchase of the Pampa (Tex.) News. A week before this purchase they bought the Panhandle Herald. Warren will be general manager and director for both newspapers. He is retiring from the staff of the Amarillo News-Globe, with which he has been associated for several years.

Jewel Irene Palmer, B.S. in Ed. '16, educational missionary, 354 Nakazota, Takinogawa, Tokyo Fuka, Japan, writes, "I do enjoy the ALUMNUS so much. It is the one piece of mail I always read on the instant of its arrival. We people away from home do appreciate so much any news from our old classmates and are eager to know about all that is going on at Old Mizzou."

Capt. Oscar L. Farris, A.M. '15, who married Miss Mary Cochran of Columbia in 1918, was elected commander of the Tennessee American Legion recently. In the World War Capt. Farris served as first lieutenant in the 114th Machine Gun Battalion of the Thirtieth Division, receiving the British military cross after action on the Somme. He is now commander of Troop B, 109th Cavalry, Tennessee National Guard. Capt. Farris is also adjutant of Post 6, American Legion. Capt. and Mrs. Farris live at 1036 Sharpe Avenue, Nashville.

Joseph L. Schlitt, M.E. '17, is now living at 142 Stiles Street, Elizabeth, N. J.

Mrs. James M. Carson, formerly Miss Ruby Leach, '14-'16 is living at 859 N. W. 14th Court, Miami, Fla.

Lottie Crecelius, B.S. in Ed. '22, address is care of Passavant Memorial Hospital, Jacksonville, Ill.

J. C. Thompson, B.S. in B.A. '22, is with the Cudahy Packing Co., Los Angeles, Calif.

Alfred F. Lagemann, B.S. in Ed. '11, is teaching in the Technical High School, Indianapolis, Ind.

George Robb Ellison, LL.B. '06, Attorney of Maryville, Mo., has announced as a democratic candidate for Supreme Court.

Ecel Hays Wunderlich, A.B. '07, A.M. '08, writes, "Enclosed is my final payment on my Memorial pledge. Congratulations on your achievement in raising money 'where it ain't'."

P. Loyd Lewis, B.S. in E.E. '99, district manager of the Wagner Electric Mfg. Co., Kansas City, Mo., visited the University during the last week in February.

Frank Dickinson Wickham '90-'95, Beta Theta Pi, is living at 2621 W. Adams Gardens, Los Angeles, Calif. He married Miss Myrtle Louise Logan of El Paso, Tex., in 1902. They have two sons and one daughter.

George F. Klein, B.S. in M.E. '13, is in the manufacturing Dept., A. E. Stanley Manufacturing Co., corn products Decatur, Ill. He married Miss Mary Whitney, '09-'12 in 1914. They have two sons, Geo. Jr., and Donald.

Warren W. Browne, Manager of the Mortgage & Securities Co., of St. Louis, former President of the St. Louis Alumni Association, visited the University in March and addressed the joint student committees of the Memorial Campaign.

Lowell R. Johnson, LL.B. '23, Acacia Phi Delta Phi, who married Barbara Warren, A.B. '24, and Henry M. Shughart announce that they have associated themselves with Charles M. Miller in the general practice of law at 1011 Commerce Building Kansas City.

Ruth Feist, '22-'24, 3301 Paseo, Kansas City, Mo., is with the Butler Manufacturing Co. Her brother, Dr. G. V. Feist A.B. '20, A.M. '24, and his wife, formerly Miss Helen Merkle, A.B. '22, announce the birth of a daughter, Virginia Lynn, on Jan. 27.

Mary Margaret McBride, B.J. '18, 12 St. Luke's Place, New York City, is collaborating with Paul Whiteman as the author of an interesting three series story on "Jazz" appearing in the Saturday Evening Post. Miss McBride has met with unusual success as a magazine writer.

Antone E. Russell, A.B. '98, LL.B. '00 Beta Theta Pi, Phi Delta Phi, QEBH, is attorney at law, 533 Exchange Bank Bldg., Spokane, Wash. He married Miss Mary Stuart of Savannah, Mo., in 1904. They have one son.

Vaughn Bryant, B.J. '11, S. A. E., a composer of student days, wrote the book "Stumbling Forward" given by the Kansas City University Club in February. Mr. Bryant is with the Kansas City Star. He married Ethel Motley, Grand Rapids, Mich., in 1914. They have one son and one daughter.

Lloyd James (Tommy) Thompson, A.B. '17, Phi Kappa Psi, Phi Beta Pi, and member of the Quadrangle Orchestra, is a physician (specialist in neuro-psychiatry), 330 Kirkpatrick Bldg., St. Joseph, Mo. He married Miss Jessie E. Williams, A.B. '17, Boonville, in 1918. They have one daughter.

Chas. Page Williams, B.S., Pe.B. and T.E. '90, Phi Delta Theta, is consulting engineer, Irrigation, Drainage and Water Supply, Travelers Hotel, Brownsville, Tex. He married Miss Lena Leigh Johnson, Mexico, Mo., in 1892. They have one son and one daughter.

Allen B. Wilder, M.E. '12, Phi Kappa Psi, is vice-president and manager of the Wilder Mfg. Co., St. Louis. He was a member of the football teams of '08-'09-'11 and a member of the track teams of '08-'11. He married Miss Sallie M. McClure in 1913. They have one daughter.

Roscoe Lynd (Bouncer) Warren, B.S. in Ag. '17, Acacia, is an architect, 681-82 Chamber of Commerce Bldg., Los Angeles, Calif. He married Miss Iris D. Pleas, B. S. '17, Collinsville, Okla., in 1917. They have two sons. Mr. Warren was a member of the track teams of '15-'16-'17.

I. O. Royle, B. S. in Eng. '16, is Manager of Office Production, Purina Mills, St. Louis. He married Miss Ruth Estes Tandy '16, of Columbia. They have two daughters and one son. Mrs. Royle writes, "How I enjoy seeing the ALUMNUS immediately upon its arrival I neglect all household duties and devour the ALUMNUS news."

Edwin Roy Keller, B.S. in Ag. '19, M.A. '23, formerly field instructor in the Agricultural Extension Service here with his oldest brother, has opened a feed and produce business 220 N. Main Street, Jonesboro, Ark. Mr. Keller is a member of the family that has furnished the great number of fine Keller boys who have attended the University and established such prominent records.

Claude Woolsey, B.S. in Ag. '14, is extension horticulturist, University of Arkansas, Fayetteville. He married Miss Era Shores, Monmouth, Ill., in 1917. They have two sons and one daughter. Mr. Woolsey was a member of the baseball teams of '13-'14. He played first base, and won the game from Kansas by knocking a home run in the ninth when the score was tied.

Eugene N. (Gene) Wood, B.S. in C.E. '12, Sigma Alpha Epsilon, is a consulting engineer, Wood & Witten, 247 Lynch Bldg., Tulsa, Okla.

Mrs. G. R. Wilson, formerly Miss Charlene Shepard, A.B. '08, Phi Beta Phi, is now living at 917 McClellan Street, Wausau, Wis. They have one daughter, Suzanne.

Thompson F. (Duke) Willis, A.B. '22, Sigma Nu, Alpha Chi Sigma, is chief chemist, Missouri State Highway Commission, Jefferson City, Mo.

Powell H. Williams, A.B. '21, Sigma Gamma Epsilon, Sigma Chi, Kappa Beta Phi, is director of production and sales, Bliss Syrup Refining Co., Station "A" Kansas City, Mo.

Dr. E. E. Brunner, M.D. '04, is superintendent of the state school at Marshall, Mo. He was superintendent of the State Hospital at Farmington, Mo. '21-23, and moved from there to Marshall. He married Miss Mary Neal, Centralia, Mo., in 1907.

William Justin Brown, B.S. in Ag. '19, who is teaching in the Carthage, (Mo.) high school, president of the Jasper County Alumni Association, writes: "I am glad that so much progress has been made in the Memorial Union and Stadium Campaign."

Arthur Moore Brackett, A.B. '20, Phi Kappa Alpha, Chi Chi Chi, is a chemist, Phillips Petroleum Co., Breckenridge, Tex. He writes, "I have an airplane in which I travel at convenience. Have been using it since the first of the year. It is the best way to travel and the quickest".

Edward A. Warner, '15-18, Sigma Nu, and Mrs. Warner, formerly Miss Cecilia F. Haskin, A.B. '20, are now living at 5718 McGee St., Kansas City, Mo. Mr. Warner is a member of the "M" Men's Club, and was Missouri Valley champion in tennis in '17-'18, and captain during that year.

Everett Henry (Ed) Rucker, B. S. in Ag. '15, M.A. '16, is a poultry breeder, 1337 N. Wlm St., Ottumwa, Ia. He married Miss Harriett M. Evans, '16, Ottumwa, Ia., in 1916. They have two sons and two daughters. Mr. Rucker is a member of Alpha Zeta and Farmhouse.

E. Claude Bohrer, A.B. '20, Phi Beta Kappa, Sigma Xi, Alpha Omega Alpha, Kappa Alpha, Phi Mu Alpha, is a practicing physician, West Plains, Mo. He married Miss Thelma Evans of that city in 1924. Mr. Bohrer was also a member of the Glee Club while a student in the University.

W. M. Fenwick, General Manager, and George R. Hecker, Traveling Passenger Agent, both of the M. K. & T. Railway Co., visited the University in March in the interest of the Rotary Conference to be held here April 14 and 15 and to make plan for their week-end high school student excursions to the University this spring.

Merwin Albert (Farmer or Capt.) Wilder, A.B. '12, Delta Sigma Rho, Phi Delta Phi, is in the oil business, Box 1051, Okmulgee, Okla.

Edward O. (Ed.) Wiley, B.S. in Ed. '15. Phi Delta Kappa, is director of the Training School, S. W. Texas State Teachers College, San Marcos, Texas.

Orville D. Williams, B.J. '22, Beta Theta Pi, Alpha Delta Sigma, Kappa Tau Alpha, is at present with Husch Brothers, Women Apparel Shop, Springfield, Ill.

Francis Emmett Williams, LL.B. '05, Phi Delta Phi, has his office at 502 Title Guaranty Bldg., St. Louis, Mo. He married Miss Anna Belle Donnell, De Soto, Mo., in 1917.

Sam Wilcox, LL.B. '07, cum laude, is circuit judge, Court House, St. Joseph, Mo. He married Miss Effie Spencer, '07 St. Joseph, Mo., in 1920. They have one son and one daughter.

John Warren (Jack) Wilbur, B.S. in Agr. '19, Kappa Sigma, Gamma Sigma, Alpha Zeta, is an assistant in dairying, Agricultural Experiment Station, Purdue University, Lafayette, Ind.

Mrs. Forrest Bebb, formerly Miss Mary Foster Payne, B.S. in Ed. '20, is now living at 2007 Court St., Muskogee, Okla. Mrs. Bebb is a member of Alpha Phi, Pi Lambda Theta, and Mortar Board, and was president of the Y.W.C.A., Women's Council and was May Queen in '19.

Mrs. Olin Eugene Coon, formerly Miss Grace Forbis, B.S. in Ed. '19, now lives at 1414 N. Nevada, Colorado Springs, Colo. She writes, "I wish to continue my Alumnus subscription. I think the plan a very feasible one". Mr. Coon, B.S. in B.A. '18, is with an insurance company there.

James Ashton Clay, A.B. '15, Kappa Sigma, Phi Delta Phi, Quo Vadis, and Q.E.B.H., Investment Banking, 716 S. Spring St., Los Angeles, Calif. He married Miss Velam Garrett, Austin, Tex., in 1916. They have one son, James Ashton, Jr., Mr. Clay won an "M" in football in 1912, 13, and '14 and was captain the latter year.

John Henry Gehrs, '15, Ag. & Ed., is a teacher of agriculture, Cape Girardeau Teacher's College, and the author of several books on agriculture for rural schools. He is the author of "Soils and Crops," his newest book, dealing with farm problems as they are known to the average boy and girl in this country.

Mrs. Foster B. Dennis, formerly Hazel Bernice Butts, A.B., B.S. '19, formerly of Sylvan Grove, Kans., has moved to Dodge City, Kans., 909 Avenue A. where her husband, Dr. Dennis, a Kansas graduate, has charge of the internal medicine department of the Clinic. Mrs. Dennis writes that Mrs. George E. Manzer, formerly Miss Marion Clark, B.S. '17, of Warrensburg, has a daughter three years old and is living at Haddam, Kans.

Kenneth Teasdale, A.B. '19, LL.B. '18 was toastmaster at the formal Beta Theta Pi initiation banquet held recently.

Earl Whiteside Faires, B.S. in Ag. '24, is manager of Oaksmead Farm, Charlotte, N. C. He married Miss Mary Virginia Spratt of Charlotte in 1924.

Benjamin H. Wigbels (Wiggie), Jr. B.S. in E.E. '19, is field staff accountant, General Georgia Transmission Co., Macon, Ga. He married Miss Thelma G. Hugo in 1922.

George Rowe Whitmore, LL.B. '07, Kappa Sigma, is general claims attorney, Illinois Traction System and Illinois Power and Light Corp., 204 Peoria Life Bldg., Peoria, Ill.

William Carrell (Bill) Wheeler, B.S. in Eng. '21, Tau Beta Pi, is Engineer of Equipment, Chicago Surface Lines, Chicago. He married Miss Helen Ferguson, Schenectady, N. Y., in 1924.

Dr. P. P. (Pete) Nesbitt, B.S. '01, M. D. Northwestern '03, is a Physician and Surgeon, 810-815 Surety Building, Muskogee, Oklahoma. He played on the football team in '00, and was a member of the track teams of '99, '00, and was Captain in '01.

Philip S. Savage, B.S. in C.E. '15, football '14, and Mrs. Savage, formerly Miss Alice Grey Sparks, Kansas City, and their son, Phil, Jr., have moved from Chicago back to Buffalo, 367 Vorhees Avenue, where Phil is with the Donner-Hanna Coke Corporation.

S. F. Conley, A.B. '90, treasurer of the Alumni Association of the Boone County Trust Co., Columbia, has just been appointed by Governor Baker and Attorney-General Gentry, A.B. '84, LL.B. '88, to assist in the examination of the banks where state funds are deposited.

Ed S. North, LL.B. '05, Frank Catron, A.B. '13, B.J. '15, Ed A. Setzler, A.B. '05, Paul Miller, A.B. '23, and French Dickey, B. S. in B.A. '24, all of Kansas City, drove to Columbia in March to attend the annual meeting of the Sigma Chi corporation of which Mr. North is President.

Frances Cleveland (Cleva) Cole, A.B. '09, B.S. in Ed. '09, Delta Gamma, is a teacher of English in the Columbia (Mo.) high school. She writes: "I am a subscriber to the Alumnus, and think it fine to encourage all graduates to subscribe". Her father, Dr. J. B. Cole, attended the University in '77-'78.

O. W. Bond, A.B. '22, Phi Kappa Psi, is with the Standard Oil Co. of New York, headquarters at Esplanade, Madras, India. He visited the University in February during six months leave in the United States and returned to India sailing from New York on the S. S. Berengaria, March 31st for England. After a week or so there and in Holland he will leave Genoa for Bombay. He spent the greater part of his leave in Grant City, Mo. visiting his relatives. Mr. Bond has made a remarkable record.

To our Memorial Union and Stadium Subscribers:

I TALKED with Mr. Carruthers, the Stadium contractor just a few days ago and with him inspected the work on the Memorial Stadium. The construction work is gigantic in its proportions and I wish every Memorial Stadium subscriber could see it. It is a wonderful sight. Mr. Carruthers stated that his Company would have the Stadium ready for the first football game this fall. How I rejoice that the Memorial Stadium is made possible by the liberal and loyal alumni and former students!

Mr. B. D. Simon, one of our alumni and the Memorial Tower contractor, is now at work on the third and last unit of the Tower. He hopes to have the Tower completed by the time of the formal dedication of the Stadium and the Memorial Committee of Nine, composed of Frank B. Rollins, Chairman, Frank Conley, Sydney Stephens, Dr. John Pickard, Dean Walter Miller, Dr. L. M. Defoe, Henry Depping, Clyde Snider, and Maizie Mills are looking forward to formally dedicating these two fine buildings.

The Memorial subscribers are receiving at least once a month notices regarding payments due. May I earnestly appeal to those who owe on their pledges that they send checks at once for all or at least a part of what they owe. Those of you who are not in or near Columbia cannot realize how diligently we must carry on an intensive campaign for collection on Memorial payments. We must have cash on hand to meet the monthly estimates of the architects and contractors. Construction has been based upon approximate receipts and I personally, want to ask for your sincere cooperation by sending in payments due on your Memorial Union and Stadium pledge.

Very truly yours,



Campaign Director



The Memorial Union



The Stadium

\$100,000 Subscribed in Recent Campaign

NEW students, new faculty members and new business men in Columbia, who were not here for the campaign for the Memorial Union and Stadium in 1924, subscribed over \$100,000 to these two projects, in a campaign conducted on March 23 and 24. Clyde Snider, senior law student, Independence Mo., was chairman of the campaign and had a wonderful organization to conduct the solicitation.

J. Willard Kerr was vice-chairman and Miss Fayne Witherup, secretary. The special chairmen were: Irvin Fane, advertising, F. Howard Skelly, construction, Milton V. Thompson, headquarters, Helen Meredith, publicity, Elmer ReHagan, churches, Merton Gibson, men's organizations, Frances Brewer, women's organizations, Lorne Buchner, merchants and Isaac N. Skelton, faculty. The Advisory Committee was composed of school presidents.

The school Memorial Chairmen were: James Kearney, Topeka, Kan., Graduate School; Oscar Meier, Jackson, Agriculture; Clinton Paddock, Kansas City, Arts and Science; Moe Rothenberg, Kansas City, Business and Public Administration; Rita Smith, West Plains, Gerald Carney, Fort Scott, Kans., and Leeta Holliday, Kansas City, Education; Frederick Culver, St. Joseph, Engineering; Leonard Stokes, Moultrie, Ga., Fine Arts; Don Jones, Sioux Falls, S. D., Journalism; Lynn Ewing, Nevada, Law;



Clyde Snider

and Jesse Driver, Ponca City, Okla., Medicine.

Dr. J. C. Jones, Director of the Campaign, directed the activities. Joseph S. Simpich, Chairman of the Campaign in 1924, now with the St. Louis Globe-Democrat, came to Columbia to renew old acquaintances and imbibe campaign enthusiasm. Henry Depping, Student President, had charge of the giant mass meeting the first morning of the campaign. President Stratton D. Brooks gave unstintedly of his support and cooperation. Dr. John Pickard, Captain Hugh Hester, Athletic Director C. L. Brewer and Professor Jesse W. Wrench, helped with the speaking program. Professor L. M. Defoe and Frank B. Rollins, alumni President and Chairman of the Memorial Committee of Nine, composed the committee which awarded the one hundred dollar prize, a personal gift of Dr. Jones to the school making the best return in the campaign.

"This campaign for \$100,000 in pledges assures us that work will continue rapidly on the Memorial Union and the Memorial Stadium. Additional construction expense is coming up from time to time and we doubtless shall be compelled to have other campaigns in order to complete the Memorial buildings and adequately equip them," said Dr. Jones.

"Many of these students are paying cash while they are in school and I admire greatly their fine enthusiasm."

Alumni and Former Students:

When You Return to Columbia—

Phone
491 Taxi

The Old Reliable

Ten Years of Success

17-Passenger Bus
for party calls

THINK!

of the

Sensible Rates

at the

Hotel Columbian
Columbia, Mo.

Floyd Barnhart, B.S. in Ag. '22, is an instructor in vocational agriculture, Caruthersville, Mo.

Arwed Charles (Ace) Baltzer, B.S. in Ag. '15, extension specialist dairying, Michigan State College, E. Lansing, Mich.

Mrs. Paul Baldwin, A.B. and B.S. in Ed. '08, lives at Kennett, Mo. She has two sons and two daughters.

Miss Beulah Baker, B.A. '03, is principal of the St. Louis public schools, 4021 Connecticut St.

Mrs. Ralph D. Currier, formerly Miss Edith Riley, B.J. '14, now lives at 504 E. 14th St., University Place, Nebr.

Mrs. Harry E. Wuertenbaecher, Jr., formerly Miss Alice Wiedmer, A.B. '21, Phi Beta Phi, is now living at 2166 Tower Trove Ave., St. Louis.

Edwin P. Wagner, B.J. '16, Kappa Alpha, Alpha Delta Xi, Sigma Delta Chi, Chi Chi Chi, is a Ford dealer, 5630 Gravois Sta., St. Louis.

Herbert W. Walker, B.J. '17, Acacia, is with the Newspaper Enterprise Association, 1200 W. 3rd St., Cleveland, Ohio. He married Miss Linnie Lucille Curry, Garrison, Nebr., in 1921.

Elsie Winship Wadell, A.B. '06, B.S. in Ed. '07, Phi Beta Phi and Phi Beta Kappa, is teaching, 533 Beckwith Ave., Missoula, Mont. Her father, Oscar S. Wadell, attended the University '72-'73.

Aaron Guy Axline, LL. B. '10, Acacia, is a lawyer, 210-11 Security Bldg., Lanker, shim, Cal. He married Miss Bess Beamer '10-'11 Lamar, Mo. in 1912. They have one daughter.

Omer H. (Pat) Avery, A.B. '22, LL.B. Sigma Nu, Phi Alpha Delta, is an attorney, Troy, Mo. His father, O. H. Avery received the degree of LL.B. from the University in '77.

Gail Darwin Allee, B.S. '96, is a medical officer in charge of U. S. Veterans Hospital No. 50, Whipple Barracks, Ariz. He married Miss Katherine Clark of Lamar, Mo. in 1908. They have two children, Gail S., born Aug. 29, 1909, and Laura Margaret, born Sept. 2, 1914.

Dr. W. C. Overstreet, A.B. '16, Physician and Surgeon, Jonesboro, Ark., was recently elected vice-president of the Tri-State Medical Society, composed of Arkansas, Tennessee and Mississippi. He writes that Bill Harper of football and baseball fame is his neighbor.

Joe Morris and Emery Paxton who were graduated from the School of Journalism in January, and Harry Ferguson, B.J. '24, have an apartment together in Washington D. C., where they are employed on the new daily paper, the United States Daily. Paxton and Morris are working at the Capitol Building and Ferguson is at the office. They say that Robert Lusk, B.J. '25, is a weekly visitor at their apartment.

When Your
Appetite Calls
Think of

MUELLER'S

formerly The Broadmore Inn

Bdwy at Tenth Columbia, Mo.

Motor Travelers
Attention!

Alumni garage headquarters in Columbia are at the Missouri Motor Company.

With us last month: Warren Browne, Walter Helmreich, Walton Holmes, the Wornall boys, and a host of others.

We'll do anything under heaven's sun to give the best of motor and garage service to alumni who drive to Columbia over our fine Missouri road system.

**The Missouri
Motor Co.**

Jack Taylor's Place
Assisted by "Heavy" Thomas

We Back Missouri!

Our resources and services are always at the disposal of any University student. Alumni are always welcome when in town.

**Boone County
National Bank**
Columbia, Mo.

Round the Columns of Old Mizzou

You'll find us still
Turning out that
Quality Printing
Ask Us!

**E. W. STEPHENS
PUBLISHING
COMPANY**

Broadway and Hitt
Columbia, Mo.

Willard F. Crissman, A.B. '24, is a teacher, Sedalia, Mo. He is a member of Delta Tau Delta.

Elsie Cornell, B.S. in Ed. '22, Alpha Delta Pi, is an instructor, Central High School, Linwood & Indiana, Kansas City, Mo.

Harry Thomas Cory, former student '95-'96, address is: Box 97, Hermosa Beach, Calif.

Geraldine Collum, B.S. in Ed. '13, Kappa Alpha Theta is a teacher, Yeaman high school, St. Louis, Mo.

Lindley G. Coleman, B.S. in E.E. '06, is with the Cities Service Oil Co., Fort Worth, Texas.

Lea Rachel Cole, B.S. in Ed. '19, A.M. '20, is teaching mathematics at the Central Normal College, Danville, Ind.

Elmer Sayre Clark, A.B. '12, is an instructor in economics, Butler College, Ind.

Chen, Chin-jen, B.J. '24, A.B. '25, Alpha Pi Zeta and Phi Beta Kappa, is a student, 109 Harvard Pl., Ithaca, New York.

Donald Chapman, LL.B. '17, Sigma Phi Epsilon, is an attorney, Chillicothe, Mo. He married Miss Ruth Nollinger in 1922.

Jeanette (Jean) Asbury, B.S. in Ed. '24, Phi Beta Phi, is teaching at Lexington, Mo. Her father, A. E. Asbury, Jr., Higginsville, Mo., attended the University in 1896-97.

Sophia Margaret Amery, B.S. in Ed. '19, is teaching in the Primary Department of the Chillicothe (Mo.) schools this winter. Her home is in Norborne, Mo.

Charles Franklin Alt, B.S. in M.E. '06, is an automobile dealer, 524 W. 5th St., Des Moines. He married Miss Ida Mae Darby '04, in 1904. They have three children.

O. E. (Dick) Allen, B.S. in Ag. '24, Alpha Gamma Sigma, is assistant farm advertiser, Farm Bureau, Quincy, Ill. He married Miss Mabel Gilbert, Columbia, Mo., in 1923.

The body of Eugene Field, '70-'71, "the children's poet," was re-interred in the Memorial Cloister of the Episcopal Church of the Holy Comforter of Kenilworth in Chicago on March 7.

J. H. (Venus) Degginger, '13-16, Albany, Mo., extensive breeder of Shorthorn cattle exhibited the championship Shorthorn bull at the Central Missouri Shorthorn Breeders Association Show and sale in Kansas City in March.

Marion Freeman Scott, '17-20, Rea, Mo. Hereford cattle breeders, exhibited a Hereford bull which was awarded first in its class and second in the championship class, in the Hereford roundup sale in March in Kansas City. It was the highest priced bull at the sale.

Memorial Tower

Home Economics Building and the addition to same, now under construction, the new University Hospital, Methodist Girls' Dormitory, Boone County National Bank Building and many others are "Simon Built."

Simon Construction Company

314-18 *Guitar Building*
Columbia, Missouri

THE MISSOURI SONG BOOK

The first and only University of Missouri Song Book ever published, complete in every detail, with the words and music of all the University songs. The songs of student plays in years gone by, departmental songs and yells.

The finest gift imaginable. Give your wife or husband a University of Missouri song book—a fine birthday gift.

The price is \$2.50. Send check to Bob Hill, 217 Jesse Hall. The book will be properly wrapped and mailed according to instructions.

For the Freshest of
Flowers in Columbia
write, wire, or phone

Bernard's

The Florists

919 Broadway Phone 2121

YOUR ADVISOR

That's the place we try to fill for the University student. Financial worries, often besetting the paths of those attending school, can be easily avoided with our aid. Feel free to call on us. We want to serve you.

EXCHANGE NATIONAL BANK

Columbia, Mo.

Leigh H. Irvine, LL.B. '82, is manager of the Chamber of Commerce, Bakersfield, Cal.

Ira William Fischer, '15-'17, Sigma Alpha Epsilon, is with the Pennsylvania Mutual Life Insurance Co., St. Louis.

Virgil Lee Board, E.E. '10, is General Superintendent Public Service Company of Denver, Colo. He is a member of Tau Beta Pi and Sigma Xi.

Arthur Geiger Black, A.B. '02, Sigma Alpha Epsilon, is a lawyer, 1320 Commerce Bldg., Kansas City, Mo. He married Miss Adele Overall, St. Louis in 1907.

James L. Bishop, LL.B. '86, is a lawyer, Box 117, Selma, Ala. He married Miss Agnes W. Ware, Cartersville, Ga., in 1889. They have one daughter.

Okel S. Fuqua, A.B. '15, LL.B. '17, lawyer, had his office at 307 Washington St., Waukegan, Ill. He is special assistant attorney general of Illinois.

Lee Pettit Gay, A.B. '16, Sigma Nu, Phi Beta Phi, is a physician, 721 University Club Bldg., St. Louis, Mo. He married Miss Ruth Bradfield in 1922.

Mack Galbreath, B.S. in C.E. '12, is a civil engineer, 706 McClure Bldg., Frankfort, Ky. He married Miss Edith Swicegood in 1915. They have one daughter.

Hetha Amelia Eitzen, A.B. '05, B.S. in Ed. and A.M. '06, Phi Beta Kappa and Alpha Phi Sigma, is a teacher, Columbia (Mo.) high school.

The University has sent to the Missouri Congressmen and Senators in Washington for the walls of their offices, a beautiful photograph of the Columns.

Harold Todd (Livy) Livingston, B.S. in C.E. '08, is a Civil Engineer, C. R. I. & P. Ry., Little Rock, Ark. He married Miss Lula May Evans of Mountain Grove, Mo., in 1909.

George N. Lockridge, LL.B. '12, Phi Delta Theta, Phi Alpha Delta, and Tomb and Key, is president and sales manager of the Kansas City Automobile Supply Co., 1607 McGee St., Kansas City.

Mrs. John K. Dent, formerly Miss Rosalie Tumulty, B.J. '15, is living at Cavalier Apt. 33, Louisville, Ky.

Miss Juanita Fink, A.B. and B.S. in Ed. '12, is an instructor in English, Woodlawn High School, Birmingham, Ala.

Dr. Peter Potter, A.B. '01, M.S. and M.D. '03, is an eye, ear, and throat specialist, Granite & Alaska Sts., Butte, Mont.

Paul S. Limerick, LL.B. '21, formerly of Savannah, Mo., is an attorney, 314 N. Jeffers Ave., St. Louis, Mo. He is in the legal department, Standard Oil Co.

Mary E. Lear, A.B. and B.S. in Ed. '16, A.M. '20, is an instructor, Lindenwood College, St. Charles, Mo. He is a member of Pi Lambda Theta and Sigma Xi.

Albert Leonard, B.S. in Ag. '23, head of the dairy extension department of Purina Mills, St. Louis, Mo., visited friends in Columbia during July.

Herbert Pryor, B.S. in Ed. '12, Phi Delta Kappa, is a teacher of Education, Fulton, Mo. He married Miss Agnes W. Harrison, Kennett, Mo., in 1908. They have three children.

William Edmund Price, B.S. in C.E. '07, is a building contractor, 605 W. Mian St., Oklahoma City, Okla. He married Miss Mary Grace Temple of Lake View, S. C., in 1921. They have two sons.

American and Annex Hotels

(Absolutely Fireproof)

7th & Market, 6th & Market
ST. LOUIS, MISSOURI

On direct car line with the Union Station and surrounded by all the leading places of amusement. 500 rooms with all the conveniences of a home. Bath (tub or shower) in every room. Running ice water. Telephone. In fact, everything to make you comfortable and feel at home.

Our "nation-famed" cooking at reasonable prices will attract you to our cafe.

E. Berkley Martin, Manager

Stephens College

(The Junior College for Women)
(The Educational Center of the State)

COLUMBIA, MISSOURI

Fully Accredited as a Junior College by the University of Missouri and other Standard Universities.

Write

JAMES M. WOOD, *President*

A. D. Whealdon, A. B. '02, is teaching in Superior, Wis. He married Miss Mary Lawton, of Minneapolis, in 1908. They have one son and one daughter.

L. A. (Jack) Wetzel, A. B. '09, Delta Tau Delta, is a lawyer 405 Cordin Bldg., Miami, Okla. He married Miss Lillian Lyngar, in 1912. They have two sons.

Arthur Tarance Welborn, LL.B. '05, is a lawyer, Bloomfield, Mo. He married Miss Winifred Irene Cobb, in 1914. They have three sons.

Mrs. W. A. Watt, formerly Miss Bob Lindsey, B. S. '13, A. B. '14, Kappa Kappa Gamma, now lives at 714 N. Dawson St., Thomasville, Ga. She has four sons.

Ross. B. Warren, B.S. in Eng. '17, and Mrs. Warren, formerly Miss Ruth Spense, B.S. in Ed. '18, Alpha Phi, are now living at 40th & Oak Sts., Kansas City, Mo.

James Gordon Ward, A. B. '05, A. M. '06, is superintendent of schools, Stilwell, Okla. He married Miss Anna L. Banister, El Dorado Springs, Mo., in 1909. They have one daughter.

Paul H. Walser, '23-24 Pi Kappa Alpha, Gamma Alpha, and Gamma Sigma Delta, is an agriculture agent, St. Louis-South western Railroad, Tyler, Texas.

Arthur T. (Art) Weil, B. J. '23, Kappa Tau Alpha, Zeta Beta Tau, Kappa Tau Alpha, is assistant Washington correspondent, Buffalo Evening News, 304 Albee Bldg., Washington, D. C.

Winston Hamilton (Woody) Woodson, LL.B. '16, Phi Kappa Psi, is a lawyer, 304 First Nat'l Bank Bldg., Kansas City, Mo. He married Miss Martha Allen, Pleasant Hill, Mo. in 1918. They have two sons.

William DeYoung, A. M. '25, is an instructor in soils, Montana State College, Bozeman, Mont. He married Miss Alta Snow of Richland, Mich., in 1922. They have one son, John Thomas, born June 9, 1925.

Dr. George Williamson Coffman, L. B. and Pe. B. '94, Phi Delta Theta, now lives at 6607 Virginia Ave., St. Louis, Mo. He married Miss Lillian A. Craig, Garden City, Kansas, in 1889. While in school, Dr. Coffman won the McAnnaly Medal, and was valedictorian of his class.

Guy Kenneth Foster, A. B. '02, Sigma Chi, is a teacher, South High School, Youngstown, Ohio. He won three M's in track while in school. His events were the low hurdles and 880-yard run. He married Miss Clare Mae Campbell, Trenton, Mo., in 1904. They have one daughter.

Mrs. Wm. B. Foster, B. J. '25, formerly Pearle J. Nelson, of White City, Kans., is doing publicity work for Cadmean & Standard Chautauqua, 524 N. Kansas, Topeka, Kans. Mrs. Foster was a member of Missouri Workshop, Woman's Journalism Club, Y. W. C. A., and is a member of Theta Sigma Phi.

June Findley, B.S. in H.E. '13, A.M. '18' is an instructor in the home economics department, Ohio State University, Columbus, O.

Glen D. Evans, LL.B. '24, is prosecuting attorney, Macon County, Macon, Mo.

Roy M. Ellis, '23, and Mrs. Ellis, formerly Miss Wilma Anna Spurgeon, B.S. in Ed. '23, are now living at New Florence, Mo.

Lloyd A. Eckstrom, B.S. in Eng. '19, Tau Beta Pi, is with the American Bridge Co., Ambridge, Pa.

John W. (Johnny) Wood, Ag. '16, is farming at Robertsville, Mo.

Lorenzo Ross Welsh, B.S. in Ag. '24, Alpha Gamma Phi, is a farmer, Laclede, Mo.

Alfred W. (Al) Rose, A. B. '24, is a teacher, Box 49, Camden, Ark.

James B. Quigley, B. J. '25, is now at his home, 521 West 4th St., Cameron, Mo.

John Kiefner, A. B. '25, Kappa Alpha, is in the lumber business at Perryville, Mo. He was a member of the track team of '24-'25.

Lee Carl Overstreet, LL.B. '25, Phi Delta Phi, Order of the Coif, is practicing law, 516 Scarritt Building, Kansas City. He visited the University in March.

\$170 round trip to EUROPE

Tourist third cabin

On famous "O" steamers of
The Royal Mail Line

A college vacation trip of
lifelong benefit.

Write for Illustrated Booklet.
**School of
Foreign Travel, Inc.**
112 College St., New Haven, Conn.

PAUL PARSONS

A name that stands for quality in photography. That's why students and townspeople have their work done at PARSONS.

When alumni return to Columbia to visit their fraternity and sorority houses or the eating places here they demand Central Dairy products.

When the Rotarians are in Columbia for their 14th District Conference, April 14-15, they'll want Central Dairy ice-cream. We want all of our old friends among the alumni and Rotarians to come down and see us this month.

We believe Miss Sara Lockwood, secretary of the Journalism Alumni Association, will demand Central Dairy products for the Missouri Alumni party.

CENTRAL DAIRY

"Dot" Sappington and
Clyde L. (Brick) Shepard
Proprietors



BUNNY-FOOD FOR EASTER

This Easter, play the big Jack-Rabbit and take Alice, Mary, Rasselfrida or whatever her name is, down to that Wonderland of small cakes, big cakes, glass tables, and new things to eat—The Soda Fountain, Lunch Rooms, and Tea Rooms of the Busy Bee.

Let her hunt for Easter Eggs—the kind she likes—thick chocolate, or delectable ice cream.

"Do your stuff" at the Busy Bee.

Congratulations Debaters and Coach Hulbert!!

The Stephens Oratorical Contest was held on February 26. There were five contestants. The chairman was the grandson of the original donor of the Stephens gift, E. Sydney Stephens. The Stephens prize was first given in 1868 and has since been given almost annually ever since. The judges were: Professors H. G. Brown, L. M. Short, Guy Head and Donovan Rhynsburger.

First prize was awarded to Jean Paul Bradshaw, his subject being, "The Power Behind the Law." (Bradshaw won second in the Missouri Valedictorian Contest, on March 19 at the University of Kansas.) Second place went to Kenneth Gentry, a freshman in the College of Arts and Science, his subject being, "The Great American Scandal."

Mr. Bradshaw will broadcast his speech on Monday evening, April 19, at seven o'clock, and Mr. Gentry will broadcast his on Thursday evening, April 22, at seven o'clock, Station KFRU, Stephens College.

The Freshman debate was held March 2 in Jesse Auditorium with Washington University. The freshmen representing the University of Missouri were M. M. Christensen and K. M. Gentry. The question was, "Resolved that Congress should adopt Colonel Mitchell's plan for a single department of National Defense in the Cabinet with three equal branches of Army, Navy and Air." The judges were: Frank Darnall, Central College, Fayette; Franc L. McClell, Westminster College, Fulton; and E. M. Highsmith, Hardin College, Mexico. Missouri upheld the affirmative side of the question and won a unanimous decision.

On the same evening a varsity debate was held with Washington University in St. Louis. The question was the same. The Missouri debaters were Henry Depping and H. G. Sigman. Missouri upheld the negative side of the question and won a unanimous decision.

Then Depping and Sigman, same question, defeated Oklahoma here, 2-1 decision. Dean J. P. McBaine, was chairman. Judges were Mitchell White, Editor Mexico Ledger, T. P. Oakley, Hardin College and S. P. Clay, Kemper.

Fine work debaters!

DORN-CLONEY LAUNDRY CO.

Managed by the Milburn Boys

Luther S. James, M.D. '07, is a practicing physician at Blackburn, Mo.

Mrs. Luther Hunt, formerly Miss Nellie F. Mayes, A.B. '18, is now living in Windsor, Mo., Box 415.

Gilbert L. James, B.S. in B. & P.A. '23, is traveling for the Purina Mills Company, St. Louis, Mo.

Stephen B. Hunter, '87-'88, Zeta Phi, is a farmer and banker, 400 Broadway, Cape Girardeau, Mo.

Jewell Constance Hughes, A.M. '16 Sigma Xi, is an instructor, University of Arkansas, Fayetteville.

Elmer Howard Hughes, M.A. '16, teaches at the State Agriculture College, Davis, Cal.

Alpheus M. Howard, A. B. '13, has a book and art store, Marshall, Texas. He is president of the Marshall (Tex.) Rotary Club.

Harry Walker Houf, M.D. '08, is a physician and surgeon, Hliff, Colo.

Rodney M. Fairfield, A.B. '20, Sigma Phi Epsilon, Delta Sigma Phi, is a lawyer, 506 Olive St., St. Louis. He received his LL.B. degree from Harvard in 1923.

Mrs. A. J. Dunaway, formerly Miss Stella D. Whipkey, A.B. and B.S. in Ed. '05, now lives at 3542 Allendale Ave. Oakland, Calif.

Ralph H. Duggins, '01-'02, Kappa Sigma, is an attorney, Marshall, Mo. He married Miss Juanita Bewley, in 1911. They have one son and one daughter.

Clark Arthur Briggs, B.S. in E.E. '07, A.M. '10, is livestock weight supervisor, packers and stockyards administration, Department of Agriculture, Washington, D. C.

Wm. Shull Bretz, B.S. in Ag. '93, is in the mining business, McDermitt, Nevada. Mr. Bretz, played on the first football team at the University.

Mrs. Errett D. Fuller, formerly Miss Irene Scrutchfield, B.S. in Ed. '09, A.B. '13, Delta Gamma, Alpha Phi Sigma, is now living at 1001 Custer Street, Laramie, Wyo.

Sam Tilden Bratton, B.S. in Ed. '16, A.M. '17, is associate professor of Geography, University of Missouri. He is a member of Phi Delta Kappa, Kappa Alpha and Sigma Xi.

Mrs. C. H. Didriksen, formerly Miss Mary Louise Bond, A.B. '20, is living at 878 Dexter Boulevard, Detroit, Mich. Mrs. Didriksen was a member of Kappa Gamma, Mortar Board and W. A. A.

Claude Adolphus Brown, B.J. '11, is newspaper editor and American Legion Adjutant, War Memorial Building, Little Rock, Ark. He married Miss Ruth McCurry of Little Rock in 1921.



The Courts Will Soon Be in Session

Tennis Courts we mean—and it certainly is music to one's ears to hear again the twang of the racket against the ball!

Come down to Spalding's and see all of the new things we have for tennis!

Registered Tennis Rackets

A racket that can be duplicated exactly at any time!

Metal Rackets

Spalding Tennis Ball, Nets, Posts, Markers, etc.

Chosen by Champions

A. G. Spalding & Bros.

823 Locust Street
St. Louis, Mo.



Isaac N. Skelton

Willard Kerr, Walter Carpenter and Isaac N. Skelton, president of the senior class, will compose the committee in charge of Senior Day exercises and activities which will be held Friday, May 7.

One of the new features this year will be the Senior Masquerade Ball, which will be held in Rothwell Gymnasium as the closing event of Senior Day activities.

"We are establishing the annual Senior Masquerade Ball," Isaac N. Skelton, president of the senior class, said yesterday, "to bring about a more unified and consolidated class spirit. Many seniors have expressed to officers of the senior class, the opinion that there should be some special social function for the seniors during the last part of the senior year at the University of Missouri just as there is at many other large colleges and universities."

The morning exercises on senior day will open at 10:45 o'clock and will be over at 11:20 o'clock. The seniors will march in columns over to the Memorial Tower at 10:45 o'clock so that the whole University can participate in the exercises.

At the Memorial Tower Mr. Skelton will turn the custody of the Memorial over to the junior class. Q.F.B.H., Mystical Seven, Mortar Board, Phi Beta Kappa and Sigma Xi will also announce their pledges at this time.

There will be a short address given. Walter Carpenter will be in charge of the morning activities.

It has been tentatively planned to take a group picture of all seniors in front of the Columns while they are in "M" formation.

Fine work President Skelton. Build up class spirit. We need it. Class spirit and makes loyal alumni.

We're for you.

THE CO-OP

Charles E. Barkshire, Mgr.

Order Senior Caps and Gowns
Here Now

John Henry Eckelberry B.S. in Ed. '17, is county clerk of Caldwell County, Kingston, Mo.

Mildred E. Irish, A.B. '23, Mortar Board, is doing secretarial work, 1915-11 S. LaSalle Street, Chicago.

Helen L. Johnson, B.S. in Ed. '23, Delta Gamma, is an instructor in vocational home economics, West Plains, Mo.

Harry E. Bagby, B.S. in E.E. '06, Sigma Chi, is a lumber manufacturer, 205 Gillette Bldg., Tulsa, Okla.

John Berger Jeans, B.S. in Engineering '14, Tau Beta Pi, is with the American Bridge Company, Gary, Ind.

Miss Irene Fisher, B.J. '19, has an arts and crafts shop, "The Gingham Dog," 408 W. Central Ave., Albuquerque, N. M.

Howard L. Jamison, LL.B. '12, Delta Tau Delta, has his office at 422-6 New York Life Bldg., Kansas City, Mo.

Eckka A. Gordon, B.S. in P.A. '25, Gamma Phi Beta, is in the social service department, Barnes Hospital, St. Louis.

Oliver Henry Gaebler, A.M. '20, is an associate in Biochemistry, Chemistry Bldg., State University of Iowa, Iowa City, Iowa.

Katherine M. (Kak) Freeman, A.B. '24, Alpha Delta Pi, is teaching at Joplin, Mo. Her address is 3220 Oak Ridge Drive, Joplin.

Jess N. Gittenger, A.B. & B.J. '24, Acacia, has joined the Better Business Bureau of Kansas City, as a special investigator.

May Eva Dennis, A.B. '20, is purchasing agent of Washington University and manager of the University Bookstores, Washington University, St. Louis.

Thomas Denham, B.S. in Ed. '19, and Mrs. Denham, formerly Mrs. Emma Pade Mowry '23, are both teaching at Storm Lake, Iowa.

Oscar H. DeWolf, B.S. in Ag. '17, M. A. '23, is an instructor in vocational agriculture, Pattonsburg, Mo. He married Miss Minnalee Ferree, Columbia, in 1918. They have one son and one daughter.

Oscar Farris, '15, is now an agricultural agent, 414 C. of C. Bldg., Nashville, Tenn. He married Miss Mary Cochran, '14-'17, in 1918. They have one son and one daughter.

Guy B. Park, LL.B. '96, Beta Theta Pi, is circuit judge, Fifth circuit, Platte City, Mo. He married Miss Eleanor Gabbert, Weston, Mo., in 1909. They have one daughter.

Nell Nesbitt, B.S. in Ed. '09, A.B. '10, formerly head of the home economics department, University of Colorado, Boulder, Colo., is now living at 160 Fayette Street, Morgantown, W. Va.

Look Over Your Job

This is the time of year to add up. The promotions have been made for this year. The winter's work has told you something about yourself in relation to the business you are in.

Remove your own wishes and look at it coldly. Are you actually satisfied in your mind? Would you like more freedom of action? Would you like your income to answer more nearly to your present efforts?

Selling life insurance is a good business. It means selling future security to people who need that security, in order that they may be happy and serene in mind.

It offers immediate and future returns commensurate with ability and effort. It is not a time-clock proposition.

What we mean is that selling insurance for a company like the John Hancock Mutual offers to people of your education a mental, a philosophical and a financial satisfaction.

Complete and confidential information, without any obligation on your part, can be obtained by writing to the Inquiry Bureau, John Hancock Mutual Life Insurance Company, 197 Clarendon Street, Boston, Massachusetts, or by application to any of our General Agents.

John Hancock
LIFE INSURANCE COMPANY
OF BOSTON, MASSACHUSETTS

Make
your
money
feel
at
home.

The Boone County Trust
Company.
"Built by Safe Investment"

John C. Keirse, A.B. '22, Sigma Chi, Delta Sigma Rho, is a banker, Arkansas National Bank, Hot Springs, Ark.

John P. Kelley, '09-'12, is special representative for the Equitable Life of New York, 520 Mayo Bldg., Tulsa, Okla.

Paul Keller, B.S. in Ag. '22 is field instructor for vocational soldiers, Extension Service, University of Missouri, at Mountain Grove, Mo.

Dr. Caryl A. Potter, A.B. '08, Phi Delta Theta, is a surgeon, 120 S. 7th St., St. Joseph, Mo. He married Miss Marie Whitney in 1913. They have three sons and one daughter.

Winfred L. (Lux) Post, A.B. '20, Alpha Kappa Kappa, is a physician, Frisco Bldg., Joplin, Mo. He married Miss Elizabeth Clark, '20, in 1924.

Paul McDonald Robinett, B.S. in Ag. '17, Alpha Zeta, Gamma Sigma Delta, is an officer of Cavalry, U. S. Army, Military Attache, American Embassy, Paris, France.

William L. (Tim) Phillips, A.B. '15, Delta Tau Delta, formerly of Linneus, Mo. is Captain of Infantry, D.O.L., 337 Bulkeley Bldg., Cleveland, Ohio.

Roy W. Peet, '15-'16, Sigma Chi, is a soap manufacturer, Peet Bros. Co., Kansas City, Kansas. He married Miss Helen E. Adair, '15-'17, in 1919. They have one daughter, Suzanne Catherine.

Flora May Bickel, B.S. in Ed. '19, is a teacher, Poplar Bluff, Mo.

Dr. John Andrew Orris, A.B. '21, M.A. '22, Phi Beta Pi, Beta Theta Pi, Sigma Xi is now at the Jefferson Hospital, Philadelphia, Pa.

Anna G. Newell, B.A. '02, Pi Beta Phi, is a deaconess, Episcopal Colegio Maria Josefina Hooker, Calle Colon, Tacuba, D. F., Mexico.

Mrs. Ross A. Ott, formerly Miss Catherine R. Varner, A.B. '22, Chi Omega, and Mr. Ott '18, are now living at 1405 N. 10th St., St. Joseph, Mo.

James E. Nelson, M.D. '05, and Mrs. Nelson, formerly Miss Grace B. Mudd, '04, now live at 405 W. Pine St., Lodi, Calif. They have one son and one daughter.

Mrs. J. E. Owens, formerly Miss Ruth Doak, B.S. in Ed. '22, Pi Beta Phi, now lives at 647 Cerellos Rd., Santa Fe, N. M. She has one son, Judson Eugene, Jr.

Ed. B. Olson, B.A. '20, Glee and Mandolin Clubs, '18, '19 and '20, is assistant secretary-treasurer of the American Rio Grande Land and irrigation Co., Mercedes, Texas.

Ralph Patton, B.A. '16, and Mrs. Patton, formerly Miss Myrtle Hayes Wright, are living at 921 Pamerston Ave., Winnipeg, Man. Mrs. Patton is a reporter with the Winnipeg Tribune.

Hickey-Freeman Clothes---Knox Hats --and now Boyden Shoes

Just as Hickey-Freeman clothes and Knox Hats lead as the finest product in their respective fields, so Boyden Shoes are known. Now Boyden's offer these custom shoes to the discriminating men of St. Louis in the greatest assortment ever assembled west of the Mississippi!

Boyden Shoes \$12.50, \$14, to \$22.50



Boyd-Richardson
Olive and Sixth



Hugh P. Williamson,
Editor, Savitar.

The 1926 Savitar has many new features. One of the most outstanding is the Alumni Honor section. This section contains the pictures and a short account of the twenty graduates of the school who in the opinion of a committee on selection have achieved the greatest things. These persons selected represent every school in the University. At the present time they are resident in widely varying parts of the country.

It is the hope of the present staff that future Savitar staffs will see fit to continue this practice, so that members of the Alumni will consider it an honor to be included in this section.

Clara Gardner, B.S. in Ed. '10, is a teacher of history, Joplin (Mo.) High School.

Miss Lela Gross, B.S. in Ed. '18, Delta Delta Delta, is a teacher, Columbus, Nebr.

John R. Grigg, B.S. in C.E. '10, Kappa Sigma, address is: Oakland Pier, Oakland, Calif.

J. B. Gauldin, Pe. P. 1881 has taught twenty years in rural schools. He is now farming at Marshall, Mo.

Dr. Carl H. Greene, A.B. '14, son of Dr. C. W. Greene, 814 Virginia, Columbia, is at the Mayo Clinic, Rochester, N.Y.

Ralph (Gravy) Gravelly, B.J. '19, Sigma Nu, Sigma Delta Chi, is editor of the Free Press, Bolivar, Mo.

Myra R. Chandler, B.S. in Ed. '24, is a teacher of physical education, 3700 Virginia, Kansas City, Mo.

Anna Margaret (Madge) Cameron B.S. in Ed. '21, Alpha Delta Pi, is a teacher, Little Rock, Ark.

Ida Ellen Graham, B.S. in Ed. '20, is an instructor, Mississippi State College for Women, Columbus, Miss.

Helen Graham, A.M. '25, is teaching in the University of Arkansas, Fayetteville, Ark. She is a member of Pi Lambda Theta.

Dora Louvenia Ingram, A.B. and B.S. in Ed. '10, A.M. '25, a missionary, Apartado 363, Monterrey, U. L., Mexico, spent the summer with her parents near Columbia.

Ernest William Jones, LL. B. '09, Phi Kappa Psi, Phi Delta Phi, is a lawyer, 46-48 Kahn Bldg., Sedalia, Mo. He married Miss Lucille McClure in 1912. They have one son.

Mrs. Richard L. Johnson, formerly Miss Mildred Bell, A.B. & B.S. in Ed. '12, A.M. '14, Delta Gamma, is film editor, Lasky Studio, 1520 Vine Street, Hollywood, Calif.

Charles B. Davis, A.B. '02, and LL.B. '05, is judge of the U. S. District Court, 319 Customs Bldg., St. Louis, Mo. He married Miss Elizabeth L. Jackson, '01-'05, in 1915. They have four daughters.

Dr. Walter E. Dandy, A.B. '07, Phi Beta Kappa, Sigma Xi, QEBH, is a surgeon at Johns Hopkins Hospital, Baltimore, Md. He married Miss Sadie Martin, Baltimore, on October 1, 1924.

Earl T. Steele, B.S. in Ag. '11, Mystical Seven, Track Captain '11, famous two-miler of his day is extension agent at Troy, Mo. His nephew, Charles Steele, is the two-miler on this year's track team and performs as much like his uncle as could possibly be imagined. His nephew won the two-mile in the indoor meet at Kansas City on February 18.



Ted O'Sullivan, guard, junior, Kansas City, was elected captain of the 1927 basketball team. He is a real basketball player and will do his best to help Coach Bond win a Valley Championship next season. Ted's a real football player, too.

Coach Bond's Tiger basketball team tied with Nebraska for fourth place in the final Conference standing. Kansas won the championship. Had the Tigers performed during the first part of the season as they did during the last half, they certainly would have ranked mighty close to the top.

They defeated Iowa State at Ames, 34-21, on February 27; won from Drake at Des Moines the following night, 19-15; then defeated Washington at St. Louis; won from Nebraska at Columbia, and lost the last game of the season to Drake here.

Basketball letters have been awarded to the following men: Captain McMullan, Yunker, Shannon, Buckner, McDonough, Bacchus, O'Sullivan, captain-elect; and Flammack.

We are all for you down here at our place. You put up a real sportsman-like brand of basketball last season.

Millers

George Helm

Frank Bihr

PROFESSIONAL DIRECTORY

VOLNEY McFADDEN

AB. '13, LL. B. '14

Counsellor at Law
277 Broadway
New York, N. Y.

H. E. KEIM, LL.B. '12

DYER & KEIM

Attorneys at Law

American National Bank Bldg.
Enid, Oklahoma

ROSCOE E. HARPER, A. M., LL. B. '20

Attorney and Counselor at Law,
1000-1007 Atlas Life Bldg.,
Tulsa, Oklahoma
Firm: Mason, Honnold,
Carter & Harper

E. Kemper Carter, C. E. '12

Albert R. Waters, C. E. '12

The CARTER-WATERS
CORPORATION

Materials of Construction

2019 Main Street, Kansas City, Mo.
Building and Paving Materials

JOHN S. HORNBACK, A. B. '16, LL. B. '18

Attorney and Counselor at Law
700-706 Woodward Building
Washington, D. C.
Telephone, Main 8300
Practice Before Supreme Court of the
United States, Federal and State Courts
and All Government Departments

Main 6533 Res. Eddy 8577

GROVER C. HOSFORD

Attorney and Counsellor at Law
721 Fidelity Mortgage Bldg.
Cleveland, Ohio

ERNEST E. TUPES

A. B. and B. S. in C. E. '09

Attorney & Counsellor at Law

General Practice of law, specializing in

Patent and Trademark Practice

Monadnock Block Chicago, Ill.

BUS MAIN 944 RES. FOREST 3144

ERNEST STAUDE

Contracts Indemnifying for
Loss

to Persons and Property -
Entire Fifth Floor Equitable Bldg.
St. Louis, Mo.

"See Me and Die Laughing"

Samuel Blair Fisher, LL.B. '90 Beta Theta Pi, is on the editorial staff, Edward Thompson Pub. Co., Northport, L. I., N. Y.

Mrs. Will L. Moore, formerly Miss Hortense Dungan, A.B. '08, Pi Beta Phi, now lives at Oregon, Mo. She has three sons and three daughters.

Tom Moore, LL.B. '09, is an attorney, Ozark, Mo. He married Miss Mary E. Kirby, Springfield, Mo., in 1915. They have three daughters.

Charles L. (Sol) Moore, LL.B. '22, Alpha Tau Omega, Phi Delta Phi, is now a lawyer, Memphis, Mo. He married Miss Louise Barnes, January 7, 1925.

Henry Francis (Missi) Misselwitz, B.J. '22, Phi Kappa Psi, Mystical Seven, Savitar, Editor in 1921, is with the Japan Advertiser, Tokyo, Japan.

Charles E. Murrell, LL.B. '99, is an attorney, Grim Bldg., Kirksville, Mo. His children are William T., LL. B. '24, Natalie, and Charles E., Jr.

Albert G. Morrison, LL.B. '90, is a lawyer, El Reno, Okla. He married Miss Stella L. Paxton, Hermansville, Mo., in 1892. They have three sons.

Lionel C. Mulligan, B.S. in B. & P.A. '25, Delta Sigma Pi, Alpha Pi Zeta, is an accountant, General Electric Co., Building 5, Room 500, St. Louis, Mo.

John S. Morrell, B.S. in Ag. '23, is teaching Vocational Agriculture in Beloit, Kans. He married Miss Nellie E. Norton in 1920. They have two sons and one daughter.

Mrs. Henry Moore, Jr., formerly Miss Olivia Smith, A.B. '15, Phi Beta Phi, Phi Beta Kappa, now lives at 420 Pine St., Texarkana, Tex. She has one daughter, Katherine Elizabeth.

Maurice M. Milligan, LL.B. '08, is Judge Probate Court, Ray County, Richmond, Mo. He married Miss Sue McDonald in 1911. They have one son and one daughter.

Franklin Marion Nash, B.S. in E.E. '06, is a Hydro-Electric Engineer, Corinth, N. C. He married Miss Juliet L. Gilmer, of Sioux City, Ia., in 1910. They have one son and one daughter.

The following out-of-town alumnae attended the 16th annual Alpha Phi Founders Day banquet on March 6: Mrs. Schuyler M. Smith and Mrs. A. L. Klein of St. Louis; Mrs. J. H. Hollister, Mrs. W. H. Guild, Mrs. James E. King, Mrs. Clarence Terry, the Misses Lorena Brown, Frances Pethick, Mildred Morgan, Ada Parrish, and Lucille Meinhoffer, all of Kansas City; Misses Ruth Parks and Euphemia Highleyman of Sedalia; and Miss Virginia Renoe of Fulton. Local alumnae who attended: Mrs. Walter S. Ritchie, Mrs. Bob. Hill, Mrs. C. C. Lightner, Mrs. Robert I. Simpson, and Miss Mildred Hudson.



Send your
Engraving
Work
to

BURGER ENGRAVING COMPANY

ARTISTS
DESIGNERS
PHOTO ENGRAVERS

8th and Wyandotte

KANSAS CITY, MISSOURI

"Burger
Illustrations
build
Business!"



BEN F SEWARD
'14
VICE PRESIDENT

Walter Lee Gray, LL.B. '21, Phi Delta Phi, and Mrs. Gray, formerly Miss Sara E. Moore, '21 Hannibal, Mo. are living now in Fairfax, Okla.

Austin B. Griggs, B.S. in C.E. '99, is valuation engineer, Atchison Topeka & Kansas Railroad, Topeka, Kans. He formerly lived at Hedge City, Mo.

Arthur J. Clayton, B.S. in Ag. '17, is county agent, Keytesville, Mo. He married Miss Hallie Herring, of St. Charles in 1917. They have two sons.

George V. Feist, A.B. '20, A.M. '24, is a practicing physician 844 Lathrop Building, Kansas City, Mo. He married Miss Helen Merkle of Kansas City in 1924.

Walter J. Gresham, LL. B. '11, is an attorney, Lexington, Mo. He married Miss Eula Frances Finley, Cottonwood Falls, Kansas in 1913. They one have son and two daughters.

Harry Earl Guth, B.J. '20, Sigma Delta Chi and Dapa Press, is editor of the Perry County Republican, Perryville, Mo. He married Miss Grace O'Mara, Perryville, in 1922. They have one son, Harry Earl, Jr.

Mrs. Agnes E. Filler, M. A. in Home Economics '23, formerly Miss Agnes Emberson, Marshall, Mo., is head of the home economics department, Mississippi State College for Women, Columbus, Miss.

Lee M. Gentry, Beta Theta Pi, is a farmer, Oregon, Ill. He married Miss Christine Spencer, Sedalia, Mo. in 1910. They have four children.

Nat. T. Buckley, B.S. in '22, is a minister at Benton, Mo. He married Miss Bertha Husted, B.S. in Ed. '22, in 1921. They have two daughters.

P. G. Buckles, A.M. '22, formerly superintendent of the Odessa, (Mo.) School, has been made principal of the Woodland School, Kansas City.

James R. Bryant, A.B. '13, is a lawyer, 7 S. Dearborn, Chicago, He married Miss Elizabeth Sampson, Louisville, Ky., in 1920. They have one daughter, Martha.

Dr. Charles Clifton Browning, M.D. '83, has his office at 711 Merritt Bldg., Los Angeles, Calif. He married Miss Helen E. Tillanaugh in 1885. They have one daughter.

David A. Glushak, B.S. in Ag. '18, is an accountant, 304 Peoples Life Insurance Bldg., Washington, D. C. He married Miss Ida L. Rosenson, in 1920. They have two daughters.

Mary Catherine Hanna, B.S. in Ed. '20, formerly of Columbia, is an instructor in Physical Education in the Kansas City Schools, Kansas City, Mo. Miss Hanna was a member of W.A.A., Bethany Circle, and played on the hockey and basketball teams.

Stanley L. Cytron, B.S. in B.A. '24, Zeta Beta Tau, is secretary of the Cytron Mortgage Co., Inc., 110 N. 9th St., St. Louis, Mo.

Robert A. Brown LL.B. '89, is an attorney, Tootle-Lacy Bldg., St. Joseph, Mo. He married Miss Mary Guitar in 1892. They have three children.

Ralph Lyman Brown, A.B. '13, Alpha Chi Sigma, Gamma Alpha and Sigma Xi is a research chemist, U.S. Bureau of Mines, Pittsburgh, Pa.

J. B. (Jim) Coppedge, A.B. '22, Sigma Alpha Epsilon, Mystical Seven, is practicing law, 410 Commercial Bldg., Tulsa, Okla. His father was a student in the University.

Elmer B. Brown, B.S. in Ed. '14, is an instructor, State Teachers College, Warrensburg, Mo. He married Miss Mary Probert, Carthage, Mo., in 1905. They have one son, Harold.

Samuel Forder Crecelius, C.E. '92, Sigma Alpha Epsilon, is a civil engineer, 304 City Hall, San Antonio, Texas. He is chief engineer in charge of flood control work in San Antonio.

Charles Norris Hartwell, A.B. '05, is a missionary, Hwanghsien, Shantung, China. He married Miss Elizabeth Brodie Le Maistre, Charleston, S. C. in 1909. Mr. Hartwell is a member of Kappa Sigma, and QEBH.

COOPER-CARLTON HOTEL



Headquarters for the Big Athletic Events

They Select the
COOPER-CARLTON
American League Baseball
Clubs.
University of Michigan.
University of Wisconsin.
University of Illinois.
Purdue University.
University of Missouri.

Collegiate Athletic teams when in Chicago make the COOPER-CARLTON their headquarters. Away from the noise and congestion of the "Loop," yet only ten minutes from downtown, the COOPER-CARLTON is conveniently located near the University of Chicago.

Write or Wire for Full Information.

COOPER-CARLTON HOTEL
Hyde Park Boulevard at 53rd Street, Chicago

Special Club Rates

offered to athletic teams. Famous for preparing special menus for athletes. The Crystal Ball Room and Gold and White Room are among the most beautiful in Chicago.



Oliver Palmer

The sixth annual Engineer's Week was a great success. Dean E. J. McCausland and the members of his faculty and the student body are to be congratulated.

Starting with the St. Pat's smoker given by the students and ending with the Kow Tow and Knighting ceremonies every part of the program was a feature.

J. L. Hamilton, chief engineer of the Century Electric Company of St. Louis and President of the Engineering Alumni Association, delivered "A Message from the Alumni," relative to the needs of the College of Engineering and what the alumni are willing to do to help secure these needs; President Stratton D. Brooks and Robert E. Lee, were the banquet speakers. J. Harrison Brown, B. J. '14, sales-manager of the A. P. Green Fire Brick Companies of Mexico, Mo., spoke on "Clay Industries of Missouri." Royal R. Switzer, A. B. '98, President St. Louis Refrigerating and Cold Storage Company, spoke on "Application of Refrigeration to Industry in the United States." A. K. Bushman, E. E. '12, of Chicago, spoke on "Opportunities for Technical Graduates with the General Electric Company, and H. E. Frech, '09, District Engineer of the St. Louis Portland Cement Assn., were the other alumni speakers. Walter Rautenstrauch, M. E. '02, was unable to attend.

Approximately sixty alumni attended the St. Pat's celebration. Fifty senior engineers were made Knights of St. Pat and H. A. Larue, Professor of Highway Engineering and Bob Hill, Alumni Recorder, were made honorary Knights.

Miss Janet Van Vilet, of St. Joseph, a Junior in the School of Fine Arts, was crowned Queen of St. Pat's Ball. Oliver Palmer was St. Pat.

Parker
FURNITURE CO.

Barton Robnett

Tom McHarg

Louis L. Barth, A.B. '03, is a merchant 132 Public Square, Springfield, Mo.

Henry G. Berghorn, B.S. in Eng. '25, is at home in Bales, Mo.

Amanda Lee Beaumont, B.S. in Ed. '05 is Dean of Women, Marshall College, Huntington, W. Va.

Robert H. (Bob) Bawbell, B.S. in Ag. '21 Alpha Zeta, is junior statistician, U. S. D. A. Box 123, Houston, Tex.

Miss Erma R. Bishop, B.S. in Ed. '10, former teacher, is now editor of a religious publication, 2712 Pine St., St. Louis.

Elmer R. Axon, B.S. in C.E. '12, is a Civil Engineer, Springfield, Mo. He married Miss Iva L. Thomas in 1917. They have two sons and one daughter.

Robert M. Barnes, B.A. '88, is Cashier of a bank at Memphis, Mo. He married Miss Anna Mety in 1895. They have one son and five daughters.

Glenn M. Brill, B.J. '25, Delta Upsilon, formerly editor of the Sedalia Capital, has gone to Chicago with the Associated Press.

Alice Barnett, B.S. in Ed. '24, 6315 Waterman Avenue, St. Louis, writes, "The ALUMNUS has been most interesting and enjoyable. I am glad you placed my name on the subscription list."

Eugene Clinton (Gene or Tom) Hall, B.S. in Agr. '12, Delta Tau Delta, Tomb & Key, Mystical Seven, is manager of the farm loan department, George M. Forman & Co., Chicago. He married Miss Signa Berg, Madison, Wis., in 1922.

Christopher Herman (Chris) Kraft, B.S. in E.E. '14, Eta Kappa Nu, is an electrical engineer, 314 N. 12th Street, St. Louis. He married Miss Alice Mae Price of Springfield, in 1916. They have one son and two daughters.

W. Milton Koenig, B. S. in Ag. '15, and Mrs. Koenig, formerly Miss Cora B. Hanson, B.S. in Ag. '15, are now living at 613 Oakwood Ave., Webster Groves, Mo. They have two daughters, Pala Jayne and Betty Rose.

Elmer O. Jones, LL. B. '13, of La Plata was elected president of the Young Democrats Jefferson Club of Missouri, at their meeting in Jefferson City recently, succeeding Roscoe Conkling, LL.B. '12 of St. Joseph. C. P. LeMire, LL.B. '12, of Kansas City, was elected secretary.

Guy E. Yeldell, B.J. '25, Kappa Sigma, Kappa Theta Alpha, Merchandising & Research Department, St. Louis Post-Dispatch, writes, "Here's my check for the Memorial. I was in Columbia recently and want to compliment the Memorial Committee on the splendid progress that is being made on the Memorial Tower and the Memorial Stadium."

Fredendall's News Letter.

Homer Croy, famous Missouri Author, has written another book: "They Had to See Paris." The Alumnus has not received its complimentary copy. Willis C. Beasley, senior, is new Cadet Colonel. Miss Frances Kinsey, junior, is the new president of the University Y. W. C. A. The Presbyterian congregation is considering the purchase of the Garth homestead at Hitt and Cherry for student center. The two old toll-gate houses on the Ashland Gravel road have been demolished. The Ashland Gravel is now cross-state highway No. 7. Time makes changes! The men's and women's Rifle teams are "cleaning up." Gwinn Henry, football coach, talked to a stranger in Columbia recently while the stranger's partner drove his car away. Mrs. Henry goes with Henry on all motor trips now. Dean F. M. Tisdell of the College of Arts and Science, and Mrs. Tisdell, will spend the summer in Europe. The Kappa Sigma House, 101 Stewart Road, suffered a \$10,000 fire loss on St. Pat's day. They're living in the Campbell house on Sixth St. Colonel E. M. Stayton, State Commander of the American Legion, has called the annual meeting of that organization at Moberly for August 23 and 24. Kenneth Lancaster, Tiger track star, is the new president of the State Student Advisory Y. M. C. A. Council. Joe Janousek, known by thousands of alumni died March 18. Kansas City Westport High School, George Edwards '13, Coach, won for the third time in four years the Missouri Basketball championship here on March 20. They defeated Central of St. Joseph, Anton Stankowsky, former Tiger Captain, coach. Dr. W. H. Pommer, formerly professor of music, (retired in 1922) celebrated his seventy-fifth birthday on March 22. The following law students passed the state bar examinations held in Jefferson City in February: Lynn Adams, Leland Willard Byars, W. Henry Depping, Andrew Ellison, Lynn Moore Ewing, Edward Randall Hudson, Charles Luther Long, J. Wesley McAfee, Horace G. Sigman, John Middleton Gerlach, Paul H. Perreten, Isaac N. Skelton, Lester A. Vonderschmidt. Missouri Law alumni take notice! Get in touch with these men! Here's a chance for alumni employment! Louis W. Berry, wholesale groceryman of Columbia, died in March and his mother died a few days later. J. D. Elliff, professor of high school administration, has been elected president of the North Central Association of Colleges and Secondary Schools. Lyle C. Wilson, B. J. '24, has been promoted to New York Cable Editor for the United Press. He was formerly Cable Editor of the United News and was in foreign service in Berlin and London. Duke N. Parry, B. J. '20, will take Wilson's place. He has been with the Kansas City Star, the Japan Advertiser and the Centralia (Mo.) Courier. Frank Chambers, A. B. '15, Phi Beta Kappa, formerly University Registrar and member of the Law faculty, has been appointed Assistant United States Attorney for New York City. He has been practicing law in New York for two years.

That's enough news. We're going to the window to see and hear George Venable's great R. O. T. C. Band of fifty pieces. How they do play Dixie!

FREDENDALL'S DEPT. STORE
H. A. Doty R. J. Foerst

School of Journalism alumni and former students will figure more largely in Journalism Week events, May 10-15, this year than ever before.

Monday will be Missouri Writers' Guild day, with Mrs. Mary Blake Woodson of the Kansas City Star, president of the guild, presiding. Tuesday will include addresses on a variety of journalistic fields, and there will be a reception from 10 to 12 p. m. given by Journalism student organizations. Wednesday, Thursday and Friday the Missouri Press Association will meet.

Thursday is to be Journalism Alumni Day. There will be talks by alumni and former students; the 1916 graduating class and possibly the 1911 class will hold reunion luncheons; the portrait of Dean Walter Williams, painted by Charles F. Gal of St. Louis, will be presented to the School as a gift from the alumni; there will



Sara Lockwood

be the annual business meeting of the School of Journalism Alumni Association and the annual alumni dinner at Harris' with Rex Magee presiding. At 10 p. m. a dance for all Journalism Week visitors with Columbia journalism alumni as hosts.

Among the alumni and former students who have been invited to appear on the Journalism Week

program are: Mrs. John K. Dent (Rosalie Tumaty) of Louisville, Ky.; Miss Laura Lou Brookman, Sunday Editor of the Des Moines Register; Ralph (Scoop) Turner of United Press fame; John Stapel of the Atchison County Mail, Rock Port, Mo.; Frank Ridgway of the Chicago Tribune; Stephen Avery, who is winning laurels as a fiction writer, and Alex (Tex) Bayless of Houston, Tex.

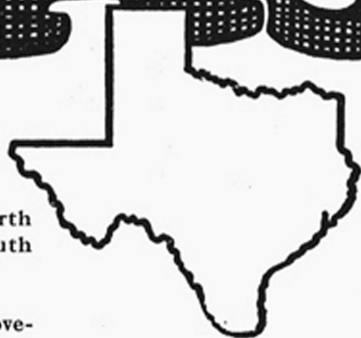
The Missourian Magazine for May 15 will be devoted to stories about and by alumni and former students with pictures of alumni and their families. Contributions and pictures should be sent at once to Sara L. Lockwood, secretary of the Journalism Alumni Association, 204 Jay H. Neff Hall. Copies of this issue will be mailed to all alumni and former students.

The big feature of Journalism Week, as usual, will be the closing banquet Friday evening with Dean Williams presiding.

THE HARRIS' CATERING CO.

Millard & Sisson, Proprietors
(both alumni)

To TEXAS



- from St. Louis and Kansas City on the north to San Antonio and Galveston on the south
- serves the biggest cities in Texas
- a record for prompt, dependable freight movements
- "on time" performance of passenger trains
- three fine, fast passenger trains, the Katy Flyer, the Katy Limited and the Texas Special
- dining cars on all through trains

"Oil for Fuel"



W. M. FENWICK,
General Passenger Agent
Ry. Exchange Bldg.
St. Louis, Mo.

Missouri-Kansas-Texas-Lines

Alumni Attention!

You Have an Opportunity to
Hear a Great Glee Club!

The Glee Club of the University of Missouri will make its second tour of the present season beginning Saturday, April 3rd. They will include the following places in their itinerary, and will give an evening concert at each place:

Saturday, April 3rd—Trenton.
Monday, April 5—Chillicothe.
Tuesday, April 6—St. Joseph.
Wednesday, April 7—Kansas City.
Thursday, April 8—Mexico.
Friday, April 9—St. Charles.
Saturday, April 10—St. Louis.

At Chillicothe, they will sing in the local churches at the Easter Day Services, both morning and evening. At Kansas City, the concert will be given in the ballroom of the Muehlebach Hotel and will be followed by a dance which will partake of the nature of a general reunion and jubilation of the Alumni of the University in the district tributary to this city.

The concerts in St. Joseph, in Mexico and in St. Charles will be given in the local high schools and are being fostered by the Alumni in these places. In St. Louis the concert will be given in the Odeon and will be one of the musical events of the season.

The Glee Club will also appear in Centralia and Moberly on the 16th and 17th of April.

We're for the Glee Club!

DANIEL BOONE TAVERN

(Alumni Headquarters)

F. W. Leonard

Alumni, write, wire or phone us for
reservations

14th Dist. Rotary Conference Here
April 14-15.

Otto S. Conrades, B.S. in Ag. '17, is Vice-president St. Louis Material & Supply Co., 314 N. 4th St., St. Louis. He is a member of Farm House.

George Miller Craig, A.B. '13, is Arkansas State Agent and adjuster for the Home Insurance Co., of New York, 223 Gazette Bldg., Little Rock, Ark.

Virgil S. Beck, B.J. '17, 248½ N. Willett St., Memphis Tenn. writes, "The plan of sending the MISSOURI ALUMNUS to all alumni suits me fine."

William G. Haydon, LL.B. '88, attorney East Las Vegas, New Mexico, visited his brother at Ashland, Mo. and the University in late February.

Neil K. Barr, B.S. in Eng. '22, Eta Kappa Nu, is an electrical engineer with the Public Service Co., of North Illinois, 10 Illinois St., Chicago Heights, Ill.

Alice Barnett, B.S. in Ed. '24, Kappa Alpha Theta, is a teacher, Clayton Public Schools, Clayton, Mo. Her home is 6315 Waterman Ave., St. Louis.

Selwyn Dewitt Collins, A.B. '14, Phi Beta Kappa, is a statistician U. S. Health Service, Washington, D. C. He married Miss Agnes C. Spicer, Harrisonville, in 1920.

Continued from page 202

15, William Smith College, 1915-16; Syracuse University, 1916-17, Pd. B., 1917.

Education—Harold Donald Griffin, Keuka College, 1914-15; Hobart College, 1915, Bethany College, 1917-19, A.B., 1920, Tri-State Normal College, 1919 A.B. in Ed., 1919.

Geology—Howard Adorne Powers, South Dakota State College, 1920-24, B. S., 1924, University of Oregon, 1924-26, A.M., 1926.

English—Eugene E. Seubert, University of Missouri, 1923-26, A. B., 1926.

Volker Scholarship in Social Service

Sociology—Lillian Alden Hart, William Woods College, 1922-24, University of Missouri, 1924-26, A. B., 1926.

Agricultural Research Scholarship

Horticulture—Rudolph Rhadamantus Conrad, University of Missouri 1918-22 B.S. in Agr. 1922.

Animal Husbandry—Lester Earl Casida, Kirksville State Teachers College, 1923-26, B.S. in Ed., 1926.

Field Crops—Eugene L. Kelly, University of Missouri, 1923-26, B.S. in Ed., 1926.

Horticulture—Jennings Harold Long, University of Missouri, 1922-25, B.S. in Agr., 1925.

Rural Sociology—Gladys Muilenburg, Kansas State Agricultural College, B.S., 1926, 1922-26.

Dairy Husbandry—John Randolph Paulling, Jr. Glemson Agricultural College, 1922-26, B.S., 1926.

Agronomy—William C. Shotwell, William Jewell College, 1921-22, University of Missouri, 1922-25, B.S. in Agr. 1925.

Honorary Fellowship

Sociology—William L. E. Shane, Texas Christian University, 1904-06; Phillips University, 1907-09; A. B. 1909, B.S. in Ed. 1921; University of Missouri Summers, 1917, 1922, 1923, A.M. 1924.

Peabody Fellow in Education

Education—William Henry Zeigel, Jr., Kirksville State Teachers College, 1922-25, B.S. in Ed., 1925.

All right, Jack Crangle, baseball coach, let's go!

Mighty sorry you've been ill, Jack.

Jack says prospects are just fair. Pitching staff (50% of any team) all green. The pitchers are: F. O. Reeves, Carruthersville, Mo.; Jack Nichols, Marshall, Mo.; C. E. Newman, Cassville, Mo.; E. P. Sullins, Tipton, Mo.; R. R. Baker, Polo, Mo.; C. W. Fruit, Fruit, Ill.; Harry Houze, Texarkana, Ark.; H. M. Huntington, Columbia; J. C. Britton, Cabool, Mo.; Jas. A. Laus, Bunceton, Mo.; and George Flamanck, St. Joe. Catchers: H. H. Kansteiner, St. Charles, Mo.; Irl Schweiger, Kansas City; O. W. Koester, Florissant, Mo.; H. E. Ballard, Coffey, Mo.; L. G. Buchner, Kansas City and W. R. Knight, St. Joe. Bill Windle at first; Whiteman, football captain last year, F. R. Ficke, Eureka, Mo.; and J. T. Gray, Huntsville, Mo.; at second. J. B. Bishop, Peculiar, Mo.; and James Castle, St. Joe at short. Don Swoford, Ft. Worth and R. C. Stockholm, Columbia, for third. Capt. O. F. McQueen is in left, Harold Anthony, peanut salesman, Mansfield, La., center, R. F. Sunderwirth, Rockville, Mo.; Charles Netherland and Bob Scannell, at right.

The schedule is as follows:

April 7. Oklahoma Aggies at Stillwater.
April 8. Oklahoma Aggies at Stillwater.
April 9. Oklahoma University at Norman.
April 10. Oklahoma University at Norman.
April 16. Oklahoma Aggies at Columbia.
April 17. Oklahoma Aggies at Columbia.
April 23. Kansas Aggies at Manhattan.
April 24. Kansas Aggies at Manhattan.
April 26. Iowa State College at Columbia.
April 27. Iowa State College at Columbia.
April 30. Kansas University at Lawrence.
May 1. Kansas University at Lawrence.
May 7. Kansas University at Columbia.
May 8. Kansas University at Columbia.
May 14. Iowa State College at Ames.
May 15. Iowa State College at Ames.

Mean weather has prevented any outside practice, but the boys are working.

Capt. McQueen, and Jack Crangle, we're for you!

Victor-Barth Clothing Co.

I. A. Barth, Tiger Supporter.

Ninth and Broadway

When You Sell By Mail---

WHETHER it is your school or your business, when yours is the task of selling it by mail, you improve your chances of success in the same proportion that you improve the printing you use.

School catalog or business catalog, school pamphlet or business circular, its all the same — you increase your success in selling as you improve the quality.

Equipment and experience enable us to do a better class of work than you ordinarily find outside of large cities, and our prices are more reasonable than you can find in the cities.

HERALD-STATESMAN PUBLISHING COMPANY

Stationery

Engraving

Good Printing

Columbia, Missouri

When You Left the University Did Your Education Stop?

Noting the increased interest in self education, the Amer. Library Association has prepared a series of Reading Courses, known as

"Reading With a Purpose"

They have selected the best books on every subject and recommend the following books to be read for *improvement of Yourself*.

| | | |
|---|--|--------|
| Ears to Hear; a Guide for Music Lovers. | Fosdick, H. E.—The Modern Use of the Bible | \$1.60 |
| Gehrken, Karl W.—Fund. of Music..... | Inge, W. R.—Personal Religion and the Life of Devotion | \$1.00 |
| Dickinson, Ed.—Study of the Hist. of Music | Jacks, L. P.—Religious Perplexities | \$1.00 |
| Parry, C. H.—The Evolution of the Art of Music | Phelps, Wm. L.—Human Nature in the Bible | \$2.00 |
| Haddow, W. H.—Studies in Modern Music, 2 vol., each | Sperry, W. L.—The Disciplines of Liberty | \$2.00 |
| Clare, Eva—Musical Appreciation and the Studio Club | Our Children. | |
| Mason, D. G.—Contemporary Composers | O'Shea, M. V.—The Child; His Nature and His Needs | \$1.25 |
| Frontiers of Knowledge. | Holt, L. E.—The Happy Baby | \$1.00 |
| American Institute of Architects | Grove, E. R.—Wholesome Childhood | \$1.75 |
| Dickenson, G. L.—Modern Symposium | Peters, L. H.—Diet for Children | \$2.00 |
| Martin, E. D.—Psychology | Crawley, John—Reveries of a Father..... | \$1.00 |
| Morse, Sidney—A Map of the World of Knowledge | Youth in Conflict | \$1.00 |
| Patrick, G. T.—The World and Its Meaning | Psychology | |
| Rivers, W. H. R.—Social Organization | Allport, F. H.—Social Psych. | \$2.00 |
| Sedgwick, W. T. A.—A Short History of Science | Freud, Sigmund—General Intro. to Psychoanalysis | \$4.50 |
| Smith, G. E.—The Evolution of Man..... | James, Wm.—Psychology, Briefer Course | \$2.50 |
| Wells, H. G.—The Outline of History, 1 vol. | Swift, E. J.—Psychology and the Day's Work | \$2.50 |
| 2 vol. edition | Watson, J. B.—Behaviorism | \$3.00 |
| | Woodworth, R. S.—Psychology—A Study of Mental Life | \$3.00 |
| Philosophy. | The Lives of Christ. | |
| Everett, W. G.—Moral Values | Austin, Mary—A Small Town Man | \$2.00 |
| James, Wm.—The Varieties of Religious Experience | Barton, G. A.—Jesus of Nazareth | \$2.25 |
| Otto, M. C.—Things and Ideals | Bosworth, E. I.—The Life and Teachings of Jesus | \$2.50 |
| Russell, Bertrand, What I Believe | By an Unknown Disciple | \$1.25 |
| Religion in Everyday Life. | Glover, T. R.—The Jesus of History..... | \$1.50 |
| Begbie, H.—More Twice-Born Men | Rhees, Rush—The Life of Jesus of Nazareth | \$2.00 |
| Kennedy, G. A.—Studdert, I Believe | | |

All Books Postpaid on Receipt of List Price.

Other lists to be announced soon. If you want all of our catalogues, ask us to place your name on our permanent mailing list.

MISSOURI STORE CO.

"Rube & Boyd"

Columbia, Mo.

7 years



By co-operation between the manufacturers of electrical equipment and the electric light and power companies, the cost of electricity has been kept down in the years when most other costs have gone up. You will find the G-E monogram on the power plant equipment that makes cheap electricity possible and also on many kinds of electrical devices which give light, heat, and power to industry and the home.

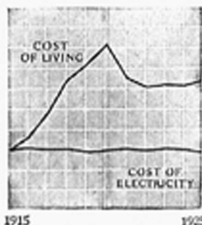
The years of a mother's strongest influence are only seven. By the time a child begins to read and write many of his dominant characteristics are formed.

It is a great thing for the future of a nation to provide mothers with more leisure during these few vital years.

Electricity can help. A family's washing which used to consume a mother's whole day can now be

done with a G-E motor at a cost of 2½ cts. an hour. A home can now be swept electrically at a cost of 1¾ cts. an hour.

Dish washing, running the sewing machine, cooking, ironing—let electricity do these routine duties in your home. Let them free you for the supreme duty and privilege of being with your children in the fleeting years when your influence counts most.



GENERAL ELECTRIC

You'll Appreciate

- the Attractive Rates
- the Dining Facilities
- the Handy Location



500 Rooms

| | |
|--|---------------|
| Room without Bath | \$2.00 and up |
| Room with Bath | \$2.50 and up |
| Double Room and Bath | \$4.00 and up |
| Room with two single beds and Bath | \$5.00 and up |

RESTAURANT—COFFEE SHOP

Service at all times 6 a. m. until midnight

POPULAR PRICES

Hotel Baltimore

12th Street and Baltimore Ave.

KANSAS CITY, MO.