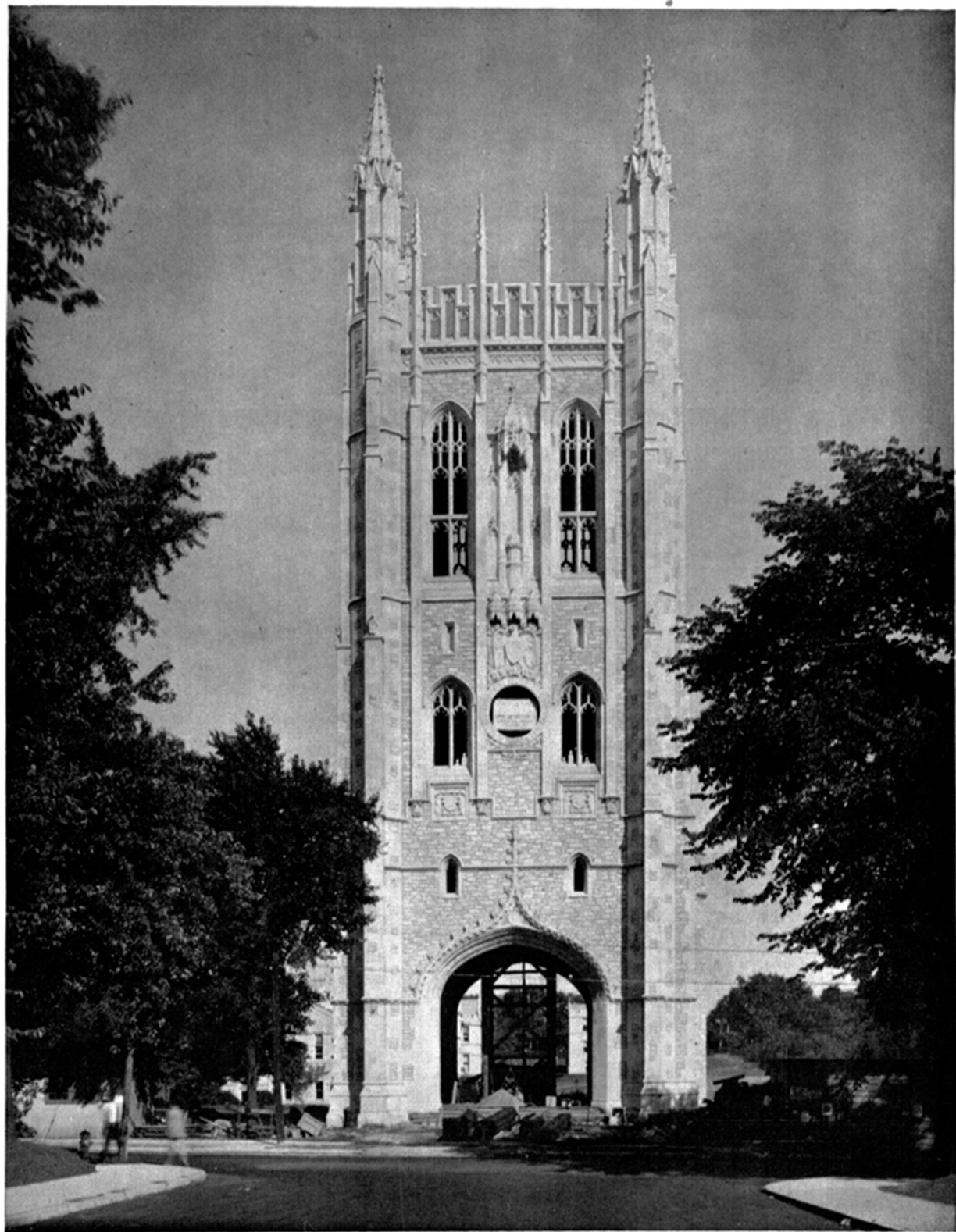


THE
MISSOURI ALUMNUS

THE MEMORIAL TOWER

On Homecoming Day, Nov. 20, the Memorial Tower and the Memorial Stadium will be formally dedicated and presented to the University. Every Memorial subscriber should arrange to attend these exercises, the most important in the history of alumni activities.

American Color Engraving Co.



Artists, Designers
Photo-Engravers

*For All Printing
and Advertising Purposes*

914 Pine St.

St. Louis, Mo.



INTERCOLLEGIATE ALUMNI HOTELS

Introducing an international effort sponsored by the alumni organizations or magazines of more than eighty colleges and universities to coordinate alumni interests and activities in a selected group of hotels, each of which is specifically prepared to cooperate with alumni organizations and the individual alumnus.





ROOSEVELT



MOUNT ROYAL



RADISSON



SENECA



BLACKSTONE

MAIN FEATURES OF THE INTERCOLLEGIATE ALUMNI HOTEL MOVEMENT



WILLARD

Interested alumni can secure from a clerk at the desk of each Intercollegiate Alumni Hotel an information leaflet which describes in detail the Intercollegiate Alumni Hotel movement.



CORONADO

At each Intercollegiate Alumni Hotel there will be maintained a card index of the names of all the resident alumni of all the participating institutions. This will be of especial benefit to traveling alumni in locating classmates and friends.



OAKLAND

The current issues of the alumni publications of all the participating institutions will be on file at each Intercollegiate Alumni Hotel.



CLAREMONT

Reservation cards will be available at the clerk's desk in each designated hotel and at the alumni office in each college or university. These reservation cards will serve as a great convenience to travelers in securing advance accommodations.



URBANA-LINCOLN

The managers of all Intercollegiate Alumni Hotels are prepared to cooperate with individual alumni to the fullest extent and are also prepared to assist in the creation of new local alumni associations and in the development and extension of the activities of those already formed.



SCHENLEY



CALIFORNIAN



SAINT PAUL



MULTNOMAH



PALACE



WALDORF-ASTORIA



ONONDAGA



WOLVERINE



LOS ANGELES-BILTMORE



BENJAMIN FRANKLIN

The alumni organizations or magazines of the following colleges and universities are participants in the Intercollegiate Alumni Hotel movement:*

Akron
Alabama
Amherst
Bates
Beloit
Brown
Bucknell
Bryn Mawr
California
Carnegie Institute
Case School
Chicago
City College of New York
Colgate
Colorado School of Mines
Colorado
Columbia
Cornell
Cumberland
Duke
Emory
Georgia
Goucher
Harvard
Illinois
Indiana
Iowa State College
James Milliken

Kansas Teachers' College
Kansas
Lake Erie
Lehigh
Louisiana
Maine
M. I. T.
Michigan State
Michigan
Mills
Minnesota
Missouri
Montana
Mount Holyoke
Nebraska
New York University
North Carolina
North Dakota
Northwestern
Oberlin
Occidental
Ohio State
Ohio Wesleyan
Oklahoma
Oregon
Oregon A.
Penn State
Pennsylvania

Radcliffe
Rollins
Rutgers
Purdue
Smith
South Dakota
Southern California
Stanford
Stevens Institute
Texas A. and M. College
Texas
Union
Vanderbilt
Vassar
Vermont
Virginia
Washington and Lee
Washington State College
Washington
Wellesley
Wesleyan
Western Reserve
Whitman
Williams
Wisconsin
Wooster
Yale

*In most instances both the alumni organization and the alumni magazine are participating as a unit.

INTERCOLLEGIATE ALUMNI HOTELS:

Roosevelt, New York City
Waldorf-Astoria, New York City
University Center*, New York City
Copley Plaza, Boston
University Center*, Boston
Blackstone, Chicago
Windsor, Chicago
University Center*, Chicago
Benjamin Franklin, Philadelphia
Willard, Washington
Radisson, Minneapolis

Los Angeles Biltmore, Los Angeles
Palace, San Francisco
Olympic, Seattle
Seneca, Rochester
Claremont, Berkeley
Onondaga, Syracuse
Sinton, Cincinnati
Wolverine, Detroit
Multnomah, Portland, Ore.
Sacramento, Sacramento
Californian, Fresno

Lincoln, Lincoln, Nebr.
Oakland, Oakland, Cal.
Lycoming, Williamsport, Pa.
Mount Royal, Montreal
King Edward, Toronto
Coronado, St. Louis
Bethlehem, Bethlehem, Pa.
Urbana-Lincoln, Urbana-Champaign, Ill.
Saint Paul, St. Paul
Savannah, Savannah, Ga.
Schenley, Pittsburgh

*To be built in 1926-27



COPLEY PLAZA



LINCOLN



WINDERMERE



OLYMPIC



SACRAMENTO



SINTON



KING EDWARD



BETHLEHEM



LYCOMING



SAVANNAH



The Intercollegiate Alumni Hotel movement is the result of a year's effort on the part of a Committee, the members of which have long been identified with alumni work.

The funds necessary to insure the success of the Intercollegiate Alumni Hotel movement are being advanced by the designated hotels, all of which have been selected after a careful study of their fitness for participation.

The committee on organization, the activities of which are controlled by a special group of the members of the Alumni Magazines Associated, has incorporated a non-profit corporation known as the Intercollegiate Alumni Extension Service, Inc., which will direct the policies of the Intercollegiate Alumni Hotel movement and serve as a coordinating unit between the alumni organizations and the designated hotels.

OFFICERS AND DIRECTORS OF THE INTERCOLLEGIATE ALUMNI EXTENSION SERVICE, INC.

18 East 41st Street
New York City

LEVERING TYSON, *President* W. R. OKESON, *Director at Large* J. O. BAXENDALE, *Treasurer*
R. W. SAILOR, *Vice President* E. N. SULLIVAN, *Secretary*

DIRECTORS

J. O. BAXENDALE
Alumni Secretary
University of Vermont

DANIEL L. GRANT
Alumni Secretary
University of North Carolina

MARION E. GRAVES
Acting Alumni Secretary
Smith College

R. W. HARWOOD
Harvard Alumni Bulletin
Harvard University

E. N. SULLIVAN
Alumni Secretary
Penn State College

ERIC F. HODGINS
The Technology Review
Massachusetts Institute of
Technology

JOHN D. MCKEE
Wooster Alumni Bulletin
Wooster College

HELEN F. McMILLIN
Wellesley Alumni Magazine
Wellesley College

J. L. MORRILL
Alumni Secretary
Ohio State University

LEVERING TYSON
Alumni Federation
Columbia University

W. R. OKESON
Treasurer of
Lehigh University

R. W. SAILOR
Cornell Alumni News
Cornell University

W. B. SHAW
Alumni Secretary
University of Michigan

ROBERT SIBLEY
Alumni Association
University of California



THE MISSOURI ALUMNUS

Vol. XV. No. 2

OCTOBER, 1926

COLUMBIA, MO.

Dean McBaine Elected Head of Missouri State Bar Association

By DEAN J. P. McBAINE

The Law School of the University of Missouri dates from the year 1872. It began with two instructors and a two-year curriculum. In 1901, the curriculum was lengthened to three years. In 1911, the entrance requirements to the law school were raised and all students entering were required to have completed two years of college work. Prior to 1911, the amount of general education required had been gradually increased from one to four years of high school work, then to one year of college work and finally to two years of college work in 1911. The requirements for entrance and the length of the period of study of law and the number of subjects taught have been gradually increased from time to time in order to keep up with the advance in legal education throughout the country. We take pride in the fact that this school is a charter member of the Association of American Law Schools, which was organized in 1900. Today, this Association is composed of sixty-four of the leading law schools of the United States and Canada. In 1921, the American Bar Association at its meeting in Cincinnati formulated standards of legal education and decided to classify the law schools of the country so that the prospective law student might have better information when he decided to select a school to prepare himself for the legal profession. In November, 1923, the Council on Legal Education and Admission to the Bar of the American Bar Association made its first classification of American law schools. Thirty-nine law schools in the United States were originally designated by that body as Class "A" schools, that is, schools that were then complying with the standards fixed by the American Bar Association as proper standards for legal education. This law school was in the original list of thirty-nine and has continued since its original classification to be rated as a Class "A" school by the Council. At the present time, there are one hundred and sixty-seven law schools in the United States.



"He was elected President of the Missouri State Bar Association at the 44th annual meeting in Kansas City on October 2."

There are approximately sixty of these one hundred and sixty-seven schools that have been rated by the Council as Class "A" schools.

The law schools exist for the purpose of serving the state and of training young men and women for the practice of law in Missouri and elsewhere. Its courses are designed to furnish a thorough training in the more fundamental topics of the law. At the present time, we are offering instruction in twenty-seven subjects. Our courses aggregate ninety-six hours and we require for graduation, 82 hours' credit. The instruction is carried on by seven members of the faculty and the University Attorney, who gives a course in Legal Ethics of three hours a week during the first semester to first year students. The law school publishes, four times a year, the Law Series of the University of Missouri Bulletin. The purpose of this Bulletin is to present the results of legal study and research in the field of Missouri law. Each number contains one or more leading articles on some phase of Missouri law, written by a member of the faculty, and notes on recent Missouri cases written by students under the

guidance of members of the faculty. This publication was commenced in 1913 and there are, up to date, thirty-four numbers published. Beginning with the fall of 1919, the Law Series has also contained the announcements and other matter of the Missouri State Bar Association.

At the present time, the school occupies the building that was erected for its purposes in 1893. It is the hope of all friends of the school that we will soon occupy a modern fireproof stone and brick building located at the southeast corner of Francis quadrangle to be known as "Lee H. Tate Hall." This building is now in course of erection. In 1923 Mr. and Mrs. Frank R. Tate, of St. Louis, offered the University \$75,000 for the purpose of building a law building on condition that the Legislature would appropriate a like amount. In 1923 the Missouri Legislature appropriated \$75,000 for the purpose of erecting the new building. The funds were released in the fall of 1924 and in December, 1924, the Board of Curators of the University let a contract for the construction of the building. Work was begun in the early part of 1925 but due to the legal requirement governing the time within which the money must be expended, it was not possible to complete the building and compensate the contractor, so in 1925, the Legislature of Missouri again made an appropriation of funds for the building. Due to the condition of the public revenues, the Governor decided it was impossible to release the money that had been appropriated in 1925 and the building has not yet been completed. No work has been done on the building since August, 1925, because of lack of funds. The full amount of the gift of Mr. and Mrs. Tate has been expended and it is confidently hoped that the next Legislature will again appropriate the unexpended balance of the State's former appropriations and that the revenues will warrant a release of the funds so

(Continued on Page 50)

Two Perfect Towers in the World, Says Dr. Walter Miller

Dr. Walter Miller, Dean of the Graduate School, has been a member of the Memorial Committee ever since the great enterprise was undertaken. He has just returned to the University after an absence of fifteen months. We have asked him to tell us in a few words what he thinks of the Memorial Tower.

During his sabbatical year Dean Miller has been Annual Professor of the American School of Classical Studies at Athens and Director of its Summer Sessions in 1925 and 1926. For nearly half a century the School in Athens has been realizing the purpose of its founders, making it possible for graduates of American colleges and universities to study the language and literature, the history and geography, the art and the monuments of Greece in Greece itself, increasing the knowledge, strengthening the scholarship, and enriching the experience of the many who in these forty-four years have availed themselves of the advantages afforded by the School. Just to spend a year in Greece, in intimate association with the Parthenon and the other great monuments of the Age of Pericles, with the Dionysiac Theatre, the Temple of Olympian Zeus, the Cephissus, the Academy; to tread the ground once trodden by Themistocles and Sophocles and Socrates, Demosthenes and Plato and Xenophon; to visit Delphi and Olympia with Pindar and Simonides; to revel with the Bacchae on Parnassus and Cithaeron; to fight again on the very scenes the battles of Marathon and Salamis and Thermopylae—any one of these privileges is worth all the time and money it costs to claim them.

The American School in Athens, like the marine biological laboratory at Woods Hole, Massachusetts, is a department of the University of Missouri, and Missouri alumni are admitted to it without payment of any fees. There were nineteen students in the regular session of 1925-26, among whom were five from Missouri: Mrs. Jennie Emerson Miller, and Misses Emma Cauthorn, Marjorie Carpenter, Lillian Goucher, and Clara Patience Haggard.

The great event of the school year was the dedication of the School's new library, the Gennadeion. The site across the street from the school building was presented to us by the Greek government; the building, all of Naxian and Pentelic marble, is the gift of the Carnegie Corporation; the priceless collection of more than 50,000 rare books is the gift of Ioannes Gennadios, a wealthy Greek who for



Dean Walter Miller and Miss Cauthorn (center) in Academic Procession, the American School in Athens

forty years was ambassador at the court of St. James. We present herewith an official photograph of the academic procession entering the grounds of the new library for the dedication ceremonies. Dean Miller and Miss Cauthorn may be identified in the center, with the annual professor's residence, a part of the Gennadeion, in the background. Many distinguished scholars from all parts of the world attended the dedication and during the month of April visited many of the most famous places in Greece under the guidance of Professor Miller.

In the course of the year Dean Miller traveled more than 40,000 miles, visiting twelve foreign lands, studying topography and history, art and architecture. With the exception of the Parthenon in Athens and the great temples of Olympia and Delphi and Ba'albek, there was no building that he approached with more eager anticipation or beheld with deeper thrills than Missouri's completed Memorial Tower, in the promotion of the building of which he has taken so active an interest. The first thing in Columbia that he wanted to see on his return was the Tower. And as he beheld it from the corner of Ninth Street and Memorial Way, he pronounced it "perfect." "There now are," he said, "two perfect towers in the world—Giotto's Campanile in Florence and the Memorial Tower of the University of

Missouri in Columbia, each perfect in its way. It is a dream of beauty." "The architect," he says, "was commissioned to make the most beautiful Gothic tower in America, and he has done more and better than that. He has created, I believe, the most beautiful Gothic tower in the world."

Powell Edits New Paper.

J. B. Powell, B.J. '10, former instructor in the School of Journalism, former editor of the China Press and editor and proprietor of the China Weekly Review, is to be editor of a new "all American" newspaper, which is to appear in Shanghai about January 1. The paper is to be the general organ for the American community in Shanghai and American interests in central China. Mr. Powell has been in China since 1917.

K. C. Alumni Visit Here.

L. K. Block, Secy., Co-operative Club, E. Kemper Carter, C.E. '12, Carter-Waters Corp., H. B. Lewis, B.S. in E.E. '09, Kansas City Power & Light Co., P. Loyd Lewis, Wagner Electric Corp., and Mrs. Lewis, H. O. Peck, Lehigh Portland Cement Co., Sam B. Sebree, A.B. '07, Sebree, Jost & Sebree, and Bernard Weinberg, Bernard Millinery Co., all of Kansas City were some of the Alumni who accompanied the Kansas City Chamber of Commerce good fellowship tour to Columbia on August 24.

New University Stadium Opened, Despite Rain

By C. L. Brewer, Director of Athletics

The New Memorial Stadium, the dream of alumni and those interested in athletics for many years, was officially opened Oct. 2, when Tulane University, the wonder team of the South, came to Columbia. Alumni returned by the hundreds and Columbia was full of good folk from all parts of the state.

The Opening was marred, however, by a steady week of rain, and while the morning of the game was clear another downpour came just before time for the game. This made the field a sea of water and impossible for good play. Yet, this did not seem to dampen the ardor of the fans and a steady stream commenced pouring in the Stadium at 12 o'clock when the gates were opened, and the Stadium was comfortably filled by persons in slickers and raincoats by the time the game was under way.

It was a beautiful game in spite of the conditions. Two splendid teams met and battled through the full sixty minutes without either being able to score. Coach Henry's Tigers, captained by Carl Bacchus, made a splendid showing under the circumstances. This was the second year that these two teams have met and both were draws. The game in New Orleans last year ended 6-6.

The crowd was a colorful one. Some two thousand state officials, military men, and other notables of the state, were present. Tulane brought a special train with a faithful crowd of Southerners.

The Memorial Stadium was not entirely finished, yet it was near enough ready so that alumni and friends could get an idea of what the finished structure would be. It presented a beautiful sight, and the alumni who were present seemed happy with its arrangement, plan, and general appearance.

Just before the game the crowd stood while the band played the Star Spangled Banner, and the flag was raised with a salute of twenty-one guns. Between halves a series of pennants of the Conference schools, Tulane, and two emblematic of the two Tiger Championship football teams, was unfurled. Also between halves the Student President, attended by a military escort, presented a huge bouquet of flowers to President Dinwiddie and Captain Gamble of the Tulane team.

The crowd was an omen of what may be expected at later games in the Stadium. It is believed that for the Kansas game the Stadium will be more than filled. At present there are twenty-five thousand permanent seats, and it is planned for the Kan-

sas game to erect temporary seats at the two ends to accommodate some ten thousand more. There is every indication that they will all be needed and that a new era has arrived in football and football crowds at Missouri.

One of the most satisfying features of the Stadium was the ease with which the crowd entered the Stadium. Then at the close of the game it mounted the rim and melted away toward Jesse Hall and the Main Campus.

It is a relief to those who have to do with the handling of the tickets to know that all of the seats are good and that all of the friends of the alumni and the institution can be taken care of with good seats.

The formal dedication of the Memorial Stadium will be held on Nov. 20, Homecoming.

Jean Paul Bradshaw, student president, presided at a most successful first mass meeting of the year, in Jesse auditorium, the night before the Tulane game. With the assistance of Director George Venable and his fine band, and cheer leaders Bill Scannell and Larry Brill, and a record mass meeting crowd, everything went off splendidly. The speakers were Senator Williams, President Stratton D. Brooks, President Dinwiddie of Tulane, Coach Gwinn Henry, Captain Carl Bacchus, Walter Robertson, Marshall; Harry Castlen, state commander of the American Legion, former Washington University football star; Dr. A. Ross Hill, Louis V. Stigall, LL.B. '11, Mayor and Attorney of St. Joseph, and George C. Willson, A.B. '11, LL.B. '14, Attorney of St. Louis, and Meigs O. Frost, popular newspaperman of New Orleans.

The classic Hinkson broke into news print on September 30, when the bridge over the creek one-fourth mile east of Columbia on the Fulton gravel road, was washed out as a result of the heavy rains. Willard H. (Bill) Level of the Highway Department was immediately on the job and had the bridge ready for travel the next day in time for the visitors for the Tulane game.

Robert C. Fields, Paris, Mo., was general chairman of the student committee in charge of the opening of the Memorial Stadium at the Tulane game. The other members of the committee were: George Schmick, Construction; Jane Hunter, Publicity; Ford Nelson, Reception; Herbert Moffet, Program; and Hartley Pollock, Reservations. They did their work well. Prof. Frank L. Martin was the faculty chairman.

From The Examiner.

Frank W. Rucker, B.J. '13, vice-president of the Independence, (Mo.)

Examiner, member of the alumni Board of Directors, representing the School of Journalism, wrote the following editorial for his paper, relative to the Tigers leaving Rollins Field for the new Memorial Stadium:

MEMORIES TO MEMORIES

Rollins Field, the scene of many bitter inter-collegiate battles at the University of Missouri, now is past history. The last game has been played upon it. The loyal alumni, who wend their way Columbia-ward this fall will not sit in the bleachers at Rollins and say "When I played here," but they'll take seats in the new, mammoth Memorial Stadium and look upon an entirely new field in a new setting.

Oklahoma and Missouri fought the last battle. As the final gun sounded and while the band played "Old Missouri," thousands stood with uncovered heads, and the victors and defeated trotted off Rollins Field never to return there in combat again.

If Rollins Field could talk, it would relate some interesting history, for it has been closely linked with the history and development of the University. It was bought at an early day by the University from Major James S. Rollins as an addition to the lands used for practical experiments by the College of Agriculture. It was then rough and rugged with a small stream cutting it. In 1892 Major Rollins' four sons had the stream filled and the land improved for use in athletics. A few wooden bleachers were built and a wooden fence erected to shut off the view of the field from passers-by. At that time there were only 600 students in the University and athletics played a minor role. As the enrollment increased and athletics became important in the curriculum of the student body, the field was enlarged, and concrete bleachers were built. About the same time the Rollins sons donated the stone gateway. Later, the north, east and west bleachers were added, and for some time Rollins Field ranked as one of the finest athletic grounds in the country.

Its passing records the growth and development of the University. Progress has no regard for sentiment, and Rollins Field with its memories must give way to a modern stadium that will provide adequate seating capacity for the relatives and friends of its thousands of students and for its thousands of alumni. It closes an interesting and eventful volume in the life history of the University, but the new Memorial Stadium begins a new volume, which will be just as replete with memories and achievements. Indeed, it is founded on memories, for it stands as a memorial to the sacrifice of life and service made by University alumni and students who served in the World War, and was made possible through the liberal gifts of loyal alumni and students.

Missouri Tiger After 1926 Valley Championship, Defeats Nebraska

The Tigers took a big bite out of the 1926 Valley Championship by defeating Nebraska 14-7 at Lincoln on October 9. Bert Clark, 160-lb. half-back, ran 35 yards for Missouri's first touchdown after receiving a punt, and he made the second touchdown by grabbing a juggled forward pass and making a pretty run across the line. It was Clark who made the costly fumble, permitting the Cornhuskers to score first, but he certainly redeemed himself. Stuber never made a bobble at quarter and his kicking was splendid.

There were 25,000 at the game in Nebraska's Memorial Stadium, the second largest crowd in the history of valley games. No serious injuries.

Coach Henry was mighty well pleased with the showing of his men.

THE STARTING LINEUP

Nebraska	Position	Missouri
Sprague	L. E.	Bacchus (c)
Randals	L. T.	Lucas
Raish	L. G.	Walker
James	C.	Smith
McMullen	R. G.	Miller
Stiner (c)	R. T.	Studebaker
J. Weir	R. E.	Lindenmeyer
Brown	Q. B.	Stuber
Stephens	L. H.	Clark
A. Mandery	R. H.	O'Sullivan
Howell	F. B.	Flamank

FIRST PERIOD

Captain Bacchus of Missouri won the toss and chose the south goal. James kicked off fifty yards to Stuber, who returned it twenty-five yards. Missouri was penalized fifteen yards for holding. Missouri faked a kick and Clark plunged at center and fumbled. Stephens recovered the ball for Nebraska on Missouri's 18-yard line. Howell plunged over Missouri's left tackle for six yards. Howell rammed the other side of the line for two yards. Howell hit center for another yard.

Howell made it a first down on a drive at center for one yard. Howell plunged over Missouri's left tackle for seven yards and was one yard short of the chalk mark. Howell plunged again at the right side of the Missouri line and laced only six inches of a touchdown. A final plunge by Howell over Missouri's right tackle scored a touchdown for Nebraska. Brown place kicked the extra point. Score: Nebraska 7; Missouri, 0.

James kicked off 48 yards to Stuber, who returned 18 yards to Missouri's 30-yard line. Flamank faked a punt and Clark plunged over Nebraska's left tackle for 7 yards. Flamank tried the same and gained 1 yard. Stuber punted 38 yards to Brown, who returned 4 yards to Missouri's 20-yard line. Stephens plunged over Missouri's right tackle for 3 yards. Brown hit the other side of the line for 2 yards. Lucas made the tackle. Brown punted 32 yards, Clark returning 10 yards to Nebraska's 45-yard line. On a fake punt Clark hit center for 3 yards. Sutherland was thrown for a 5-yard loss and the play was called back and Missouri penalized 5 yards for offside. Clark made back 4 yards of the loss on a drive at the left side of the line. A forward pass from Flamank to Bacchus was incomplete. Stuber punted 40 yards. Brown returning it 4 yards to Nebraska's 19-yard line. Brown ran from punt formation, made 3 yards around end.

Nebraska was penalized five yards when Brown crawled with the ball after the tackle. On a fake punt Howell made one yard through

tackle. Studebaker was stunned and Missouri took out time. Brown tried the Missouri right end for one yard gain.

Brown punted thirty-five yards, O'Sullivan returning four yards to Missouri's 48-yard line. Stuber faked a punt and plunged for three yards. The ball was in the middle of field. On a double pass Clark hit center for two yards. A forward pass, Stuber to Bacchus, made twenty-eight yards. Brown's tackle prevented a touchdown. Time was up for the quarter with the ball in Missouri's possession on Nebraska's 19-yard line. First down and ten to go. Score: Nebraska 7, Missouri 0.

SECOND QUARTER

Daily replaced A. Mandery in the Nebraska backfield. Clark hit the right side of the Nebraska line for three yards. Clark plunged for two yards on the next play. A pass by O'Sullivan was incomplete, the ball rolling into the end zone for a touchback. It was Nebraska's ball on its 20-yard line. Presnell was substituted in Nebraska backfield for Holm. Presnell made three yards around end, but the play was called back and Nebraska penalized fifteen yards for holding. Brown punted thirty yards to Clark, who returned the kick thirty-five yards to a touchdown. Captain Stiner broke through and blocked Stuber's try for point, but the officials ruled Nebraska was off side and the extra point was allowed. Score—Nebraska 7, Missouri 7.

James kicked off thirty-five yards to Stuber, who returned thirteen yards to Missouri's thirty-eight yard line. Time was taken out. Missouri faked a punt and Flamank made three yards through center. Stuber ran from punt formation, but failed to gain. Holm made the tackle. Lee replaced Studebaker in the Missouri line-up.

Stuber punted forty-six yards out of bounds. It was Nebraska's ball on its 14-yard line. Presnell tried Missouri left end and failed to gain. Brown plunged through center for four yards.

Brown punted thirty yards out of bounds. It was Missouri's ball in the middle of the field. Clark plunged through center for a half a yard. A pass, Stuber to Clark, was incomplete. Another pass, Stuber to Clark gained twenty-seven yards. Flamank tried the Nebraska line, but failed to gain. Diemund replaced Flamank in the Missouri backfield.

Stuber went out of bounds on the next play for no gain. A double pass behind the line and then a forward pass, O'Sullivan to Stuber, was incomplete. Stuber dropped back to Nebraska's 33-yard line and hurled a long forward pass which a Nebraska man blocked. The ball bounced into the air into Clark's arms and he raced five yards for a Missouri touchdown. Stuber place-kicked the extra point. Score—Missouri 14, Nebraska 7.

Lee kicked off thirty yards, Joe Weir returned ten yards to Nebraska's 40-yard line. Bronson replaced Brown in the Nebraska backfield. On a triple pass Holm ran Missouri's left end for twenty-two yards. Presnell plunged for two yards. A forward pass by Bronson was blocked by Lindenmeyer. Presnell plunged over Missouri's left tackle for three yards. A forward pass from Bronson to Presnell was incomplete. Missouri took the ball on its 35-yard line. Missouri faked a punt and O'Sullivan made five yards over Nebraska's left tackle. Gann replaced Miller in the Missouri line-up.

Clark was tossed for a yard loss at a try at the Nebraska line. Stuber punted thirty-eight yards. Nebraska making no return. Nebraska's ball on its 22-yard line. Presnell swung around Missouri's right end for one yard before he was forced out of bounds. Howell hit center for three yards. A forward pass from Bronson was blocked by Missouri. The ball was batted about in the air by the players of both teams. Gann of Mis-

souri finally caught the ball and downed it on Nebraska's 12-yard line.

Tuttle replaced Diemund in the Missouri backfield. Clark failed to gain on a line buck. O'Sullivan plunged for four yards. O'Sullivan lost a yard on a try at center. On a fourth down Stuber attempted a place kick on the 18-yard line. It went wide and rolled for a touchback. Howell made three yards through Missouri's right guard. A 2-yard drive by Howell was disallowed and Nebraska was penalized five yards for off side. Presnell drove for five yards off Missouri left tackle. Time was up for the half. Score: Missouri 14, Nebraska 7.

THIRD QUARTER

James kicked off 45 yards, Stuber returned it 20 yards to Missouri's 45-yard line. On a double pass back of the line Clark plunged for 2 yards. Stuber ran from punt formation and failed to gain. Holm went in at left half for Nebraska. Presnell was at right half. Stuber punted 42 yards. Brown returning 5 to Nebraska's 30-yard line.

Presnell tried Missouri right end and was thrown for a 5-yard loss. Brown failed to gain in a try at the line. Howell cleared the Tiger left end for 7 yards. Brown punted 33 yards to Clark who returned it 6 yards to Missouri's 41-yard line. O'Sullivan was tossed for a 2-yard loss in a try at the line. McMullen was hurt and Zuber replaced him in the Nebraska line. A pass from Stuber to O'Sullivan was incomplete. Stuber punted 45 yards. Brown returning 8 yards to Nebraska's 23-yard line. Holm plunged for 2 yards on a double pass. Howell ran the right side of the Missouri line for 3 yards.

Howell smashed the line for 4 yards. Howell plunged for 1 yard and a first down. Presnell failed to gain on the next play. Missouri was penalized 5 yards for offside on the next play. Presnell drove over the Tiger's right guard for 4 yards. Howell plunged for 2 yards and a first down.

Clark broke through center for two yards. Stuber punted thirty-two yards, Bronson fumbled but recovered for a 2-yard gain. Nebraska's ball on Missouri's 48-yard line. Whitmore replaced Raish in the Nebraska line. Beck replaced Howell in the Nebraska backfield.

Shaner was substituted for Sprague at Nebraska's left end. Marrow plunged for five yards but the ball was brought back, both teams being offside. A pass, Bronson to Joe Weir, gained eleven yards and a first down. Marrow drove through center for six yards. Time was up for the quarter with Nebraska in possession of the ball, second down and four yards to go on Missouri's 32-yard line. Score: Missouri 14, Nebraska 7.

Brown broke through the right side of Missouri line and on a cut back play gained thirty-seven yards. Clark's tackle prevented the touchdown. Nebraska's ball on Missouri's 18-yard line. Marrow replaced Presnell in the Nebraska backfield. Howell plunged for three yards through the Missouri left side.

Time was taken out for Missouri. Gann replaced Miller in the Missouri line. Howell hit center for three yards. Marrow failed to gain on a line smash. Bronson replaced Brown and A. Mandery replaced Holm in the Nebraska backfield. On a double pass and an attempted end run Mandery failed to gain and Missouri took the ball on its 13-yard line. Missouri faked a punt and O'Sullivan plunged for five yards.

FOURTH QUARTER

Bronson plunged through the Missouri line for 6 yards and a first down. Marrow drove through the Tiger line for 15 yards. Nebraska had the ball on Missouri's 10-yard line. Bronson plunged for 4 yards. Beck hit the Tiger

(Continued on Page 49)

University Has Record Fall Enrollment

By S. Woodson Canada, Registrar



S. Woodson Canada, A.B. '17, University Registrar, and his corps of assistants.

First row: Mrs. E. J. War, Marguerite Baerman, A.B. '20, Helen Richards, former student '17, Vera Ballenger, former student '24. Second row: Mildred Morgenthaler, A.B. '25, Mrs. Opal Martin, Lucille Maxwell, Exie Whitesides, former student '24, Mary Coons. Third row: Mrs. W. C. Zaring, Mrs. Myrtle Miller, Walterina Benson, Mrs. H. J. Waters, Jr., A.B. '22, Mrs. Ruth Mahan. Fourth row: Mrs. Frankie Rice, Mrs. Sallie Lou Felming, Lula Moss Robnett, former student '24, Ruth Finlay and Mr. Canada. Bashfulness kept John Riley, B.S. in Ag. '25, Ass't. Registrar, out of the picture.

Forty-one of these United States Alaska, Hawaii, the Philippine Islands, Porto Rico and seven foreign countries are represented among the 3832 students now enrolled in residence in the University of Missouri. This is the largest number of students by an even hundred ever enrolled in the University for residence work at any one time. The late registrants are expected to bring the total this semester to approximately 3875.

In the out-of-state enrollment Oklahoma leads with 136, Illinois comes second with 77, followed closely by Texas with 71. Kansas sends 52, Arkansas 48, Iowa 26, New York 25, Louisiana 23. Altogether 688 students from outside Missouri are enrolled.

Men continue to outnumber women about two to one, their total strength being 2568 as against 1264. Women this fall are registered in every division except the College of Engineering. In the School of Education they outnumber the men.

The Schools of Journalism and Law show the largest increases in enrollment, Journalism showing an increase of 25 per cent as compared with the first semester last year. The School

of Law shows an increase of 21 per cent. Enrollment in the Graduate School continues to increase steadily. The growth of that division has been particularly pleasing and is of much significance to higher education in Missouri.

Every foot of available space in McAlester Hall has been utilized to accommodate the School of Medicine's largest enrollment. In that division registration is necessarily restricted because of limited laboratory facilities.

Enrollment by divisions is as follows:

College of Agriculture	306
College of Arts and Science	1836
School of Business and Public Administration	162
School of Education	367
College of Engineering	434
School of Fine Arts	92
Graduate School	244
School of Journalism	251
Administration	162
School of Law	133
School of Medicine	85

Total (less duplicates)3832

These figures do not, by any means,

represent the total service of the University to those in quest of higher training. Approximately 3000 students are now enrolled for correspondence and extension class courses. Usually about 400 who are not enrolled the first semester come in at the beginning of the second. The summer sessions enroll about 2000 and the School of Mines at Rolla over 400 more.

Thus it is expected that 9000 or more individuals will receive this year collegiate instruction counting for credit toward degrees from the University of Missouri.

Missouri Tigers After 1926 Valley Championship, Defeats Nebraska (Continued from Page 48)

right guard for 3 yards. Marrow made a yard over Missouri's right tackle. Captain Bacchus of Missouri was hurt but he remained in the game. Marrow plunged for 2 yards through the left side of the line. Missouri took the ball on downs on her six-inch line! Who! Tarr replaced Bacchus in the Missouri lineup. Lawson replaced Joe Weir in the Nebraska line.

Stuber's punt rolled forty-six yards. Bronson making no return. Nebraska's ball on Missouri's 46-yard line. Some kick! Diemund replaced Flamank in the Missouri line. Stephens replaced Bronson in Nebraska line. Marrow made three yards through left side of Missouri line. A forward pass, Stephens to Mandery, gained eighteen yards. Marrow plunged for one yard. Stephens drove over Missouri's right tackle for four yards. Mieinz replaced A. Mandery in Nebraska backfield. Marrow slipped on the wet grass and lost a yard, and Missouri took the ball on downs.

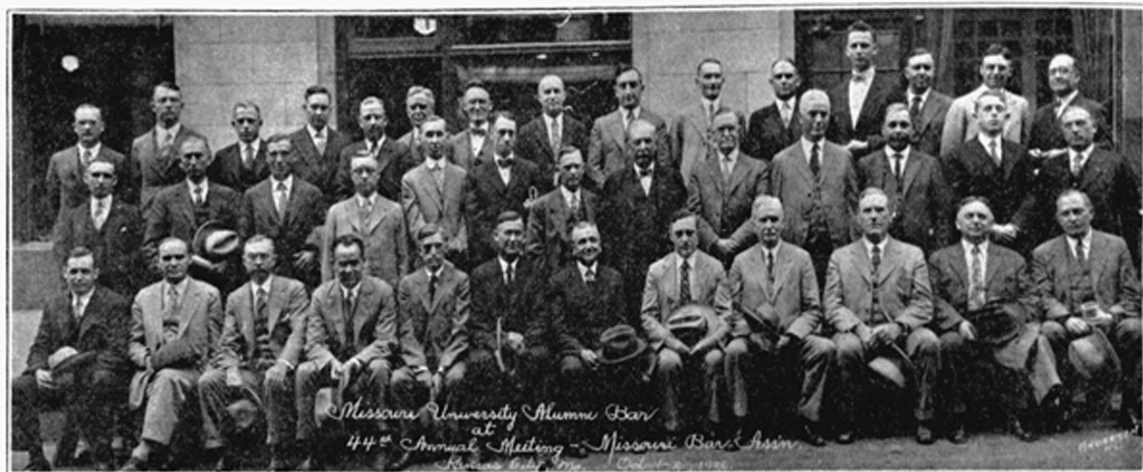
Tuttle drove over Nebraska right guard for five yards. Stuber punted thirty-five yards to Stephens, who returned it seven yards. A forward pass, Stephens to Mieinz, was grounded by Stuber. Brumm replaced Walker in the Missouri line. Marrow made two yards around Missouri left end. Brown replaced Lindenmeyer and Lindenmeyer replaced Lee in the Missouri line. A forward pass by Stephens was incomplete. Brumm had a free chance to intercept the pass, but failed. Nebraska was penalized five yards for attempting a second pass. A third forward pass from Stephens to Shaner was over the receiver's head and Nebraska was penalized another five yards.

Westcott replaced Gann in the Missouri line. Missouri penalized fifteen yards for talking offensively to an official. Time up. Score, Missouri 14, Nebraska 7. Missouri had for the first time in 30 years defeated the Huskers at Nebraska and for the first time in 30 years won two consecutive victories from Nebraska.

Steele, Captain of the Missouri cross country team, finished first in the 5 mile contest at Lincoln on October 9 in 27 minutes and 31 seconds, but Nebraska won the meet 24-31. Godwyn finished sixth. Harper, eighth, and Morningstar, ninth. Billy Fallon, the trainer, is coaching the cross country team. Henry Schulte, former Missouri coach, has charge of the Cornhuskers.

E. B. Cauthorn, B.S. in C.E. '94, B.S. in Ed. '15, Superintendent of Schools, Dallas, Tex., visited his mother. Mr. Cauthorn was one of the founders of The Alumnus. He attended the Summer Session Commencement to see over three hundred receive degrees and marvelled at the growth of the Summer Session and the University enrollment. There were only about five hundred students in the whole University when Mr. Cauthorn was in school.

At the Missouri State Bar Meet



The law alumni attend Missouri State Bar Association meeting. Left to right: W. W. Fry, Jr., L. E. Durham, Guy A. Thompson, J. E. Nugent, J. A. Potter, C. L. Henson, E. J. White, J. P. McBaine, D. H. Harris, W. C. Irwin. Second row: R. B. Lucas, E. L. Marshall, D. H. Hoffman, H. W. Timmonds, J. H. Whitecotton, N. T. Gentry, W. E. Barton, F. C. Donnell and Walter Goodson. Third row: Alvin Juergensmeyer, C. P. LeMire, D. P. Janes, E. M. Tipton, C. M. Barnes, D. E. Impey, C. E. Cowherd, J. H. Denny, W. H. Hogsett, Ed North, and J. J. Shy.

Ross E. Feaster, LL.B. '02, President of the Law Alumni Association, presided at their annual luncheon during the week of the Missouri State Bar Association meeting at the Baltimore Hotel in Kansas City on October 1. There were over 70 in attendance. Speeches were made by Dupuy G. Warrick on behalf of the Kansas City Alumni Association, Judge Merrill E. Otis, Dean J. P. McBaine, Attorney-General N. T. Gentry, James E. Goodrich, President of the Board of Curators, Senator Walter C. Goodson, Judge David Harris, E. J. White, General Attorney of the Missouri Pacific, Judge W. E. Barton of Houston, Judge Chas. L. Henson of Mt. Vernon, and Professor J. L. Parks.

A resolution was passed expressing again, appreciation of the generous gift of Mr. and Mrs. Frank R. Tate of St. Louis toward the building of the new law building and a resolution by C. L. Crocker was adopted expressing appreciation by the alumni and former students of the work of Dean McBaine and his faculty in their efforts to make the law school an outstanding one. A resolution also was passed to request the Bar Association to hold its next meeting in Columbia.

Dean McBaine was elected President of the Missouri State Bar Association at the meeting on October 2. Other officers are: Clarence A. Barnes, Mexico, LL.B. '99, first vice-president; David E. Impey, A.B. '12, LL.B. '14, Houston, second vice-president; Lee B. Ewing, Nevada, third vice-president; J. A. Potter, A.B. '02, LL.B. '05, St. Louis, secretary; and J. T. King, St. Louis, treasurer.

DEAN McBAINE ELECTED

(Continued from Page 45)

that the building may be completed in the very near future.

The building was designed by Messrs. Jamieson & Spearl, architects of St. Louis. All who have seen it agree that it is a most beautiful and useful structure. It is to be fire-proof and is greatly needed to afford proper protection for the valuable library which the law school owns, which exceeds 26,000 volumes. From the standpoint of utility, it is believed that it is the equal of any law school building in the country. The building is to be a memorial to Lee H. Tate, a graduate of the school of the class of 1914. Alumni, students and faculty anticipate with the keenest pleasure that the law school will soon be located in a modern fire-proof building and this pleasure is accentuated because of the generosity of Mr. and Mrs. Tate and the fact that the building is to be a memorial to an alumnus whose memory is richly cherished by everyone who knows him.

This year we welcome to the ranks of the faculty, two new members. Professor Merrill I. Schnebly and Professor John Coy Bour became members of the law faculty at the beginning of this academic year. They succeed Professor James W. Simonton, who went to the University of West Virginia Law School, and Professor Kenneth C. Sears, who went to the University of Chicago Law School. Professor Schnebly received his college and legal education at the Uni-

versity of Chicago and after practicing law for some time, was a member of the faculty of George Washington University, Washington, D. C., and of the University of Indiana. Last year, he was a visiting fellow at Yale University Law School where he also pursued special study and was awarded the degree of S.J.D. in June, 1926. Professor Bour received both his Arts degree and his Law degree from the University of Missouri. He received his Law degree in 1920 and practiced law thereafter in Kansas City. He took graduate work at the Harvard Law School in 1924-25 and received the degree of S.J.D. from Harvard in 1925. In 1925-26, he was a member of the faculty of the Law School of St. Louis University.

The work of the year 1926-27 is well under way and it is the purpose of the faculty and the students to continue the high standards that have been established from time to time by those who have preceded us during the last fifty years. We have a First Year Class of seventy students, the largest class that has entered the law school within a good many years.

The seventh annual conference of teachers of vocational agriculture was held in Columbia, Oct. 13-15, at the College of Agriculture, according to George A. Reavis, state superintendent of vocational agriculture. A great number of alumni and former students were present at the meeting.

The Journalism Alumni Association In Shanghai

By Louise B. Wilson
Editorial Staff,
North China Daily News.

Not so many weeks ago the spirit of Old Missouri, which has hitherto been a definite if unorganized element in Shanghai journalistic circles, sponsored the formation of a Shanghai Branch of the University of Missouri School of Journalism Alumni Association.

As most School of Journalism undergraduates undoubtedly know, the Far East has become a happy playground for the wielders of Missouri trained journalistic phrases and this is due in considerable measure to the courtesies of Mr. Fleischer of the Japan Advertiser in Tokyo where a regular colony of these journalists can be found. Sometimes some of their number drift towards Shanghai, sometimes others come here out of sheer response to the call of the East, but whatever the reasons there are at present nine identified former students of the School of Journalism in Shanghai.

A dinner party, given by one of these, Mr. P. Y. Wang on the local Chinese daily, Sun Pao, launched the Association already referred to, the while Buddhist food was being tucked away by the nine enthusiasts.

In this group were Mr. J. B. Powell, publisher of The China Weekly Review, and his sister, Miss Margaret Powell, who is doing scenario work in the motion picture department of the British American Tobacco Company; Mrs. Thomas Millard, correspondent of The New York Times; Miss Eva Chang, doing publicity work in the Y. W. C. A. and contributing articles to a local women's magazine; Miss Louise Wilson, women's editor and general reporter on The North China Daily News; Mr. Erwin F. McEuen, formerly on the staff of The Japan Advertiser and at the time en route to America via China and Siberia; Mr. Horace L. Felton, on the staff of The North China Daily News; Mr. Norman J. Ulbright, on the staff of The China Weekly Review; Mr. Maurice Votaw, teacher of journalism at St. John's University; and the host of the evening, Mr. Wang.

A toast was drunk to Missouri with the zest of a "wide-open" land and a toast was sung to old Mizzou to the well known tune.

Mr. Wang was elected president of the chapter and Miss Wilson secretary and it was decided that occasional get-togethers would be planned. The main purpose of the organization will be to act as a hospitality committee for visiting Missourian journalists who hear the call of the Far East and who will be assured of a hearty welcome among colleagues in Shanghai.

ELECTED DEAN OF SCHOOL

Pryor Ellsworth Collings, B.S. in Ed. '18, Ph.D. Columbia University '22, Phi Delta Kappa, Kappa Delta Pi, Phi Beta Sigma, Professor of Education and Director of training school, University of Oklahoma, was elected Dean of the School of Education and Director of the Summer Session



Pryor Ellsworth Collings

on September 24, Mr. Collings is 37 years old. He married Miss Lessie Lee Garren in 1908. They have one daughter.

Mr. Collings has been a teacher, principal and superintendent in public schools of Missouri for ten years, was former Professor of Education and Director of University Training School, University of Colorado, summer quarters, '24- and '25, and was a director of the Oklahoma summer session this year. He is a member of the Oklahoma Educational Association, Oklahoma Academy of Science, American Association for the Advancement of Science, Progressive Education Association, Peabody Fellow in Education, University of Missouri '20-'21 and Fellow in Education, Columbia University, 1921-'22. He is also author of the following publications: "An Experiment with a Project Curriculum, Supervision in Theory and Practice, A Course of Study for Rural Boys and Girls, Creative Supervision, A Conduct Scale for the Measurement of Teaching, and Education Through Purposeful Activity."

Virgil Lee Board, E.E. '10, Sigma Xi, superintendent of Public Service Co. of Denver, Colo., has changed his residence address to 1515 E. 8th Ave. He was graduated from the Windsor (Mo.) High School in '05.

Dr. Harlow Shapley '10, '11 is Making New Discoveries.

What is described as a cloud of galaxies, containing more than a hundred spiral nebulae, each similar in nature to the group of stars of which the sun and all the visible stars are part, is the object under study at the Harvard college observatory by Dr. Harlow Shapley, A. B. '10, A. M. '11, director of the observatory, and Miss Adelaide Ames of the observatory staff.

That these nebulae actually belong to one system is indicated by their concentration as compared with regions of the sky nearby, where the nebulae are much scarcer. Of the 103 in the group, says Dr. Shapley, two-thirds are within 5 degrees, (or ten times the diameter of the moon) of the center, while thirty-seven are within 3 degrees of the center.

That the spiral nebulae, of which many thousands are known in various parts of the sky, are stellar systems or galaxies outside the system of which the sun is a member, was shown last year by Dr. Edwin P. Hubble of the Mt. Wilson observatory, who measured the distances of two of the most conspicuous of them. These two were both shown to be about a million light years away, and while they are considerably smaller than our galaxy, including the Milky Way, they are very similar to it.

So distant is this cloud of nebulae that the light from the center of it takes about ten million years to reach the earth, though traveling fast enough to go from New York to California in a seventy-fifth of a second. Its diameter is approximately one-fifth of its distance from the sun, says Dr. Shapley, so that a beam of light would take about 2 million years to cross it. Thus it is the largest thing known to science, and the most distant that has been measured.

The cluster is located in the neighboring constellations of Virgo and Coma Berenices, or Berenice's Hair, both of which are now visible in the western evening sky, and includes at least 103 well defined spiral nebulae. One of these is known as Messier 61, and in it two German astronomers recently discovered a nova, or new star, which flashed out from previous obscurity. The brightness of this nova was so much fainter than such novae which occur in the sun's neighborhood that it confirmed the distance of 10 million light years estimated by Dr. Shapley to be the distance of the cluster.

Richard A. Smith, LL. B. '10, cum laude, QEBH, Phi Delta Phi, Leader of Debate between Texas and Kansas 1907, Rollins Scholarship '08, Editor of Independent, Student President of the Law Dept., President of U. D. Club is practicing law 2627 W. 25th Ave., Denver, Colo. He married Louise M. Novoch of Denver, Colo., in 1918.

**CHAIRMAN OF THE STUDENT
HOMECOMING COMMITTEE**



ROBERT A. CAMPBELL

Bob Campbell, a senior in the College of Arts and Science, has been appointed by President Jean Paul Bradshaw as Chairman of the 1926 Student Homecoming Committee. Bob's home is in St. Louis, 5322 Enright Avenue. He is a graduate of Soldan High School, a member of the Sigma Nu and Mystical Seven fraternities, and a former member of the Savitar staff. His brother, E. J. Campbell, attended the University in 1916-17, and his sister, Georgia May, 1923-24.

The other members of the 1926 Student Homecoming Committee are: Vice-chairman, Arthur E. Indermark, College of Agriculture; Publicity, Mary Frances Hunt, School of Journalism; Glee Club and Reception, Helen W. Baird, School of Education; Finance, Milton V. Thompson, School of Law; Frolic, Arthur E. Indermark; Construction, John W. McCune, College of Engineering; and Registration, Hubert C. Moffett, College of Agriculture.

The faculty Homecoming Committee is composed of the following: Bob Hill, chairman, C. L. Brewer, director of athletics, A. G. Capps, School of Education, L. M. Defoe, College of Engineering; W. C. Etheridge, College of Agriculture; F. L. Martin, School of Journalism; and Col. M. C. Kerth, Commandant of R.O.T.C.

The 1926 Homecoming will be the greatest and most important in the history of the University and will doubtless bring back to the University the greatest number of alumni and former students who have ever been in Columbia at one time. The Homecoming program will start on the evening of Nov. 19 with a giant mass meeting in the new Memorial Stadium, the annual "M" men's dinner, the Alumni Frolic in Rothwell Gymnasium, the Missouri-Kansas Glee Club Concert in Jesse Hall followed by a reception for alumni in Jesse Hall, the formal dedication of the Memorial Tower and the Memorial Stadium on the morning of Nov. 20, and the annual Missouri-Kansas football game that afternoon.

What a great Homecoming this will be!

*Every subscriber is urged to come back for the dedication of the
Memorial Tower and Memorial Stadium*

Never before in the history of the University have there been such extensive plans made for Homecoming. Following the appointment of the faculty committee for Homecoming by Pres. Stratton D. Brooks, followed by the announcement of the student committee by Jean Paul Bradshaw, president of the student body, plans are being made and meetings held, all of which point to Missouri's greatest Homecoming, that of 1926.

Of course, the traditional Missouri-Kansas football game will be a big feature of the day, yet no less important will be the formal dedication and presentation of the Memorial Tower and the Stadium to the University by the Alumni.

The officers of the Memorial Tower and Stadium campaign are busy now sending out invitations to the 9,000 subscribers, and it is the belief and hope of Dr. J. C. Jones that these 9,000 loyal Missourians will return here 100 per cent for the festivities of the day on November 20.

With the completion of the first unit of the new stadium, and with the additional bleacher seats that can be easily constructed a crowd of over 35,000 persons can attend the game this year. In the past, with the limited capacity of the old Rollins Field, many persons who have wanted to attend the Homecoming game, have been deprived of that pleasure due to the limited capacity of the playing field. It will be a different story this fall and there will be plenty of room for everyone who cares to come. Stadium subscribers paid up-to-date will get the first choice when the ticket allotments are made on the first of November, but even if you have not paid up your subscription they want you back and there will be plenty of good tickets for you and your friends.

On the eve of the Tiger-Jayhawk battle this year, an open air mass meeting, the first to be held in the new Stadium will be held. A special program committee for this occasion has been appointed and even at this early date they have announced the names of some of Missouri's most prominent sons, who will be back for the day and will speak.

One fare for the round trip from any point within the State of Missouri to Columbia and return is the rate that the two railroads that enter Columbia, the Wabash, and M.K.T., have made for the game this year. It is the first time that such a rate has been made and the railroad officials here have promised that special trains will be run and that they will do everything in their power to help Missouri make the 1926 Homecoming the greatest in all times.

Frank B. Rollins, president of the Alumni Assn., is chairman of the Dedication Committee and he appointed a score or more of assisting committees for the greatest of all events in the history of Missouri alumni activities.

STUDENT PRESIDENT



JEAN PAUL BRADSHAW

*If you haven't made room reservations write L. E. Slate, Secretary of the
Columbia Commercial Club*

St. Joe Alumni Hold Annual Fall Meeting



The St. Joseph Alumni Association at their annual fall luncheon on September 8 at Hotel Robideaux, Kenyon Ballard, President, presided. Samuel Utz of Central High School, introduced C. L. Brewer, Director of Athletics. Mr. Ballard visited the University the following week. Those at the meeting were: Speakers table, Sam Utz, C. L. Brewer, V. K. Ballard, Si Rositsky, Ed Beasley. Front row left to right: Marshall Carter, Wm. Tootle, Harry Broadhead, Ned Biles, Ernest Maxwell, Arthur Burgher,

Conger Beasley, Robt. A. Brown, Jr., R. A. Brown. Second row: Gerald Feltenstein, Louis Baum, Wm. Shumate, Franklin Boyer, Bob Minton, Chas. Strop, Joe Scanlon, DuVal Smith. Third row: Hon. Louis V. Stigall, Fred May, Katherine Kennedy, Helen Crocker, Mrs. Lottie S. Pratt, Miss Mabel McHendry, Louise Lacy, Calla Varner. Fourth row: Dale Bermond, George Voss, Harold Niedorp, Roy Bermond, Arthur Banschach, Albert Muench, David Hopkins, Charles Cornelius, Edwin Elliot, Emmett Ballard, Judge G. L. Zwick.

MORGANTOWN ALUMNI

E. L. Anthony, B.S. in Ag. '12, head of the Department of Dairy Husbandry, College of Agriculture, West Va., University, Morgantown, desires to convey to Alumni everywhere, that when the Tigers meet W. Va. at Morgantown on October 30 Missouri hospitality will be found. "We are all ready to welcome the Missouri Alumni and we expect a full representation of all Alumni in this section at the game on October 30," writes Mr. Anthony. "Morgantown is a real town and we have a real University. We have something more than a real stadium, and a football team that certainly will make an interesting afternoon for any team, and we all will be there eager to watch the outcome of this tilt. Good hard roads lead into Morgantown from both East and West. Easy trip from Pittsburg, Columbus, Cleveland, Phila., Washington, Baltimore, New York and Boston." Following is a list of Alumni in Morgantown:

Anthony, Ernest Lee, Dairy Dept., Morgantown, W. Va. B.S. in Ag. '12; Bradford, Miss Anna Mae, "Morgantown Post," W. Va., F.S. '15-'16; Davis, Eva Mae, University of W. Va., B.S. in Ed. '24, A.M. '25; Livesay, Edward Alexander, Dept. of Animal Husbandry, A.M. '17; Livesay, Mrs. E. A., Morgantown, W. Va., B.S. in Ed. '16;

Moreland, Mary Catherine, Home Ec. Dept., University of W. Va., B.S. in Ag. '16, A.M. '26; Newell, Elizabeth Colquitt, 128 Willey St., B.S. in Ed. '10, A.B. '11; Wilson, Mrs. Chas. V., 120 Beverly Ave., B.S. in Ed. '22. Mary Jane Peyton, B.S. in Ed. '25, Director of girls Physical Education in Charleston, W. Va., (H. S.) is planning to attend the game at Morgantown, as are J. Bernard Gibbs, B.S. in Ag. '24 in the State Dept. of Agriculture at Charleston and Albert Glenn Duple, E. E. 1916, Electrical Engineer, 201 Capital St., Charleston, W. Va.

OKLAHOMA CITY ALUMNI

Harry A. Snodgrass '12 President of the Oklahoma City Alumni Association, 617 W. 21st St., has announced the Oklahoma City Alumni will hold an Alumni dinner-rally meeting at Chamber of Commerce, 6:30 p. m., Oklahoma City, the evening of November 5, the night before the Oklahoma Missouri football game at Norman. This biennial meeting of the Oklahoma City Alumni Association is always a feature of the week-end when the Tigers play the Sooners at Norman.

President and Mrs. Stratton D. Brooks and the members of the Tiger squad, Captain Carl Baccus, and the coaching staff have been invited to at-

tend the meeting. President Snodgrass hereby extends an invitation to all the Alumni and former students of the University of Missouri in Oklahoma to attend this Alumni dinner meeting in Oklahoma City, on November 5. The Tiger yell leaders and the student President, J. P. Bradshaw will attend.

Dr. Horrace Reed, 611 First National Bank, is Vice-President of the Oklahoma City Alumni Association, and Miss Elizabeth Coulson, of Oklahoma City Times, is Secretary-Treasurer. They are working with Mr. Snodgrass in making plans for this big meeting. Reservations for banquet and football tickets in the Missouri section should be addressed to Mr. Snodgrass, c/o Wilson & Co., Oklahoma City.

MISSOURI METHODIST CONFERENCE MEETS HERE

The Missouri Methodist Conference met in Columbia in September for the third time within 25 years. Bishop W. F. McMurry presided. The Methodists built a church in Columbia in 1904, costing \$35,000, and they have under construction a new church on the southeast corner of 9th and Locust, which will cost \$350,000. The Methodists have also built a dormitory for girls, Hendrix Hall, on University Avenue, a fine contribution.

Chas. O. Ransford, editor of the St. Louis Christian Advocate, comments as follows upon the address delivered at the conference by President Stratton D. Brooks:

"Dr. Brooks in the short while he has been directing the educational program for our great state has shown himself not only an educator, but a man whose ideals are practicable and whose programs are workable. He is not obsessed by educational theories, nor with scholasticism to the exclusion of the moral and spiritual. He believes that character is more than learning and conduct is more than the following of a system or the affectation of superior airs. His message was most wholesome in its discussion of the making of good citizens from the raw product of Missouri youth intrusted to his tutelage.

"Our Missouri Conference was most favorably impressed with the man and his message.

"Columbia is without question one of the most beautiful, if not the most beautiful, town in the state. The attractive, well-kept lawns and the predominance of large, comfortable homes and delightful cottages and bungalows have a charm that is most alluring. All things considered, the home-loving spirit, beauty, culture and opportunities for learning provide an atmosphere and attractiveness found in no other Missouri town."

Leslie Erskine Allen Kelso, B.S. in E.E. '07, assistant professor of electrical engineering, University of Wisconsin, Madison.

President Stratton D. Brooks' Annual Address to 1926 Student Body

By STRATTON D. BROOKS

It was a wise man who said that a man is a fool who expects some one else to attend to his business as well as he can himself. Elsewhere it is written, "All men are fools." It is quite possible that this generalization may be justified from observation of men in other walks of life, but those of us who deal with university students suspect that its applicability is nowhere more universal than it is in academic haunts. Nor is its truth more easily shown than by the criterion of the opening sentence, namely, that university students so easily and so unanimously leave it to others to attend to the business that should be their own chief concern.

This is however no indictment of their energy, enthusiasm, and ability. They are neither lazy, neglectful, nor inefficient, in the pursuit of the things to which their fancy turns. Student life is filled to overflowing with activities that absorb each day more mental and physical energy, considered from the point of view of quantity rather than quality, than many an older man finds it necessary to expend in a week in the directing of some successful enterprise. I am sure that if the physics department could measure the foot-pounds of work actually expended by some slip of a girl in preparation for and participation in social meetings for a week, it would find an amount sufficient to run the household for an entire summer vacation without the help of mother. I am sure also that father would wonder why son accomplished so little in "the business" during the summer and can now do so much without fatigue and without complaint. Is not the answer that it was not son's business but his father's, and that the father cannot reasonably expect some one else, even though that some one else be his own son, to attend to his business as well as he can himself?

When university students leave the home, the farm, the store, or the office, they leave behind them all thought of, or interest in, the other man's business. When once the student body is assembled in academic halls, it proceeds to go about student business with an enthusiasm and abandon that is proof of energy, though not necessarily a demonstration of judgment.

Now what is the student business to which you devote your thought and energy? Each of you is paying a high price in golden coin and an even higher price in the golden years of youth for

the opportunities that a university affords. And for what? Why are you here? What results do you expect to attain? In short, what is your business as a university student?

I have no doubt that somewhere in your subconscious mind there could be found what the chemist would call a perceptible trace of a suspicion that you are to acquire some rudiments of learning, but the chief precipitate from



President Stratton D. Brooks

such a chemical analysis would demonstrate that your main desire is to participate in "college life." College life! Magic words. Ah! that is the life to live. It is filled with all that is attractive and interesting and absorbing. There is the field of college athletics, with its "pep" meetings, its celebrations, of victory, especially so in M. U., its great opportunities to show college loyalty, and to sing and shout and screech and scream, until, by comparison the work of a boiler-maker would seem like lolling in a hammock with one's ears filled with cotton.

There are initiations, dreaded by the victims, but nevertheless longed for, because in our earlier years at least, most of us do not care how big a fool we appear to be, provided only we can attract the attention of an admiring

public. Then too, when once we have passed the dreaded ordeal and are privileged to sit among the elect, what a chance to show our imagination and develop our intellect in devising hitherto unthought of diversions for the taming of other freshmen.

There is no doubt also that you have looked forward in pleasant anticipation of bats, picnics and jamborees and "rough houses." Likewise you have hoped to participate in secret meetings in which some cunning scheme to annoy an unsuspecting dean and torment a long-suffering faculty is devised. It is really exciting to demonstrate that you are original enough to think up a brand new "stunt" such as painting the sidewalk, thus demonstrating to your fellow students your devil-may-care attitude, your utter defiance of law and order, and your complete disregard of what the faculty may do about it. It requires the highest mental acumen to have every student on the campus know that you are the original Dare Devil Dick without having the dean find it out. It is a waste of time to put another goat in a professor's office unless nearly everybody knows who did it, and it is dangerous if everybody knows it. But by sailing skillfully between the Scylla of complete secrecy and the Charybdis of complete publicity, you can demonstrate that you are a master mariner on the Sea of College Life.

You will undoubtedly look with interest, if not with awe and reverence, upon some students who hold their heads so high that they cannot see you until you learn from experience that the effect is not caused by pride or learning, but is merely the result of gazing for the first time at tall buildings in the big city. And many of you who have been raised in canyons of brick and mortar will smile a bit at the boys who have not yet learned to wear a dress suit, until you find out that it is more important for you to learn to wear overalls on proper occasions than it is for them to master the intricacies of dressing *à la mode*.

Far from the least of these interesting elements of college life are the dates to be made. There is not an old foggy on the faculty who couldn't tell you, if he would, of the entrancing hallucinations of his freshman year, and it is certain that you would enjoy as they did years ago learning how to use the library without overworking

(Now Page 81 Please)



PAUL HOWE SHEPARD, JR. born July 1927, son of Paul H. Shepard, B.S. in Ag. '18 (Beta), famous football half and fullback on the teams of '13 and '14, and track man the same years. Horticulturist. Select Farm, Independence, Mo. Mrs. Shepard was formerly Clara Louise Gately, Theta, '17, of Kansas City. They attended Horticultural Day in Columbia on July 23.



ORESTES MITCHELL, LL. B. '00, cum laude Phi Delta Phi, Grand Master of Missions in Missouri in 1925, member of the St. Joseph Board of Education, 710 Corby Bldg., St. Joseph, Mo. He married Inez A. Samuel of Brookfield, Mo., in 1902. They have two daughters and two sons. Orestes Mitchell, Jr., is attending the University.



MRS. JAMES G. UMSTATT, formerly Martha E. McNitt, 18, Monroe City, and her son James McNitt, born March 11, 1922. Her husband received the degree of B.S. in Ed. W. Va. M. '24, and is teaching in Beckley. He played football in '17 and '18. In '16, he received the degree of B.S. in Ag.



The new Wabash Station at Centralia. Yea boy! Won't this be an eye-opener for the alumni this fall when they come back.



H. K. THATCHER, B.S. in Ag. '11, former track and football star, past President Little Rock Alumni Ass'n, in regal robes of Progress in agricultural pageant, Farmers' Week, U. of Arkansas. Herb is Extension District Agent S. W. district, living in Little Rock. The arms of the young man holding Thatcher's robe belong to C. Woolsey, B.S. in Ag. '14, M. in Baseball, Extension Horticulturist, who had a part in the pageant. He was in costume, but the photographer refrained from spoiling the regal atmosphere surrounding Thatcher and A. B. '18.



JOHN HENRY COX, seven months old, future Tiger fullback or tackle, son of H. Chas. Cox, B.S. in Ag. '13, and Mrs. Cox, formerly Frieda Stapel of Rockport, Mo., and the nephew of "Jawn" C. Stapel, Uncle "Jawn" is in Europe attending the World Press Congress. "Jawn" is mighty proud of his nephew.



MILO H. BRINKLEY, B.S. in C. E. '01, C. E. '06, Rollins Junior Scholarship, Tau Beta Phi, Q. E. B. H. Valuation Examiner, Interstate Commerce Commission, Washington, D. C. He married Emma M. Cooper of Columbia. They have one daughter, Mary Hamilton, born December 8, 1909.



EATON ADAMS



ARTHUR NOTTINGHAM ADAMS, LL. B. '07, can (male), Attorney, 608 Yale and Trust Building, Kansas City. He married Miss Louise Eaton of Kansas City in 1901. Their two sons, Eaton, noted football player and Arthur N., Jr., attended the University and their grandfather was one of the early University students, thus three generations have been represented in the University by this family.



ARTHUR N. ADAMS, JR.



The family of E. F. Ketter, B.S. in C.E. '08, of Gaty, W. Va. From left to right: Maud Ethelyn, born August 7, 1914; Marie Louise, born July 14, 1915; Mrs. Ketter, and Mary Barbara, born June 25, 1913.



FLORIDA HARRIS MCGRUNDER, 17 year old daughter of Mark A. McGrunder, LL. B. '01 Attorney of Sedalia, recently appointed on the Board of Managers of the eleemosynary institutions. Mr. McGrunder was formerly City Attorney and City Counselor of Sedalia, and a member of the Missouri Senate, 16-20. Majority (Democrat) Floor Leader, '19.



BETTY LEE KENAGY, born July 27, 1925, daughter of Herbert G. Kenagy, A. B. & B. S. in Ed. 16 Phi Delta Kappa, Director of Personal Research and training, Armour & Co., Chicago and Mrs. Kenagy, formerly Emily Hardisty, B. S. in Ed. '19 Chi Omega.



CHAS. H. (CHUCK) WHITE, A. B. '14, President of the Webster County Alumni Association, Cashier of the Chamber of Commerce, and President of their Chamber of Commerce; his wife, formerly Olea Anderson, and their six months old daughter, Mary Nell.



HARRY M. DUNGAN, A. B. '09, Sigma Chi, T. N. E., U. L. Society, M. S. U., Debating Club, Attorney, Oregon, Mo., and his son, Robert Montgomery, born August 28, 1917. Mr. Dungan was formerly a clerk in the insurance department of Missouri State Hotel Trustee and Probate Judge of Holt County, Mo., from 15-26. He married Miss Grace H. Montgomery of Oregon in 1910.



ELDON PHILLIPS HARVEY, born October 29, 1924, son of Mrs. Chas. Milton Harvey, 1407 Eliot, El Paso, Texas, formerly Maude Irene Phillips, B. S. in Ed. '19.



Mrs. FINIS E. ENGLEMAN, formerly Ruby Lane, and daughter, Nancy Jane, seven months, and Virginia Lee, born March 7, 1927. Mrs. Engleman is Principal of the Whittier School of Kansas City, M. A. '26, and was elected President of the 1926 summer session class.



Left to right: PROCTOR THOMSON, Jr., age seven, son of Proctor Thomson, C. H. E. '12, Kappa Sigma, Q. E. B. H., Tau Beta Pi, Psi Chi; PATTERSON and EDWIN WRIGHT PATTERSON, Jr. (twins, age six) whose parents are Dorothy Thomson (Patterson), sister of Proctor Thomson, B. S. in Ed. '12, A. B. '14, Kappa Kappa Gamma, L. S. V., and Edwin W. Patterson, A. B. '09, LL. B. '11, Phi Beta Kappa, Phi Delta Phi, Q. E. B. H. The picture was taken at the home of Mr. and Mrs. Patterson in Leonia, N. J., a suburb of New York City. Mr. Patterson is Professor of Law, Kent Hall, Columbia University.



G. CARSON CARMICHAEL, B. S. in Ed. '18, Instructor in Physics, Manual Training High School, Kansas City, and Mrs. Carmichael, formerly Mary Faye, Shelbyville, Mo., and their two sons, G. F., born June 12, 1919, and John Thomas, born November 19, 1921.



STELLA ELIZABETH STEELE, B. S. '09, A. B. '10, Alpha Phi Sigma, teacher of Home Economics, Winthrop College, Rock Hill, S. C.



ALBERT D. SHEPPARD, Jr., born August 2, 1922, son of Albert D. Sheppard, '20, and Mrs. Sheppard formerly Maurine M. Campbell, B. J. '19, Kappa Kappa Gamma, Theta Sigma Phi, Doniphan, Mo.



Dr. Leonard Gaddum, B.S. in Eng. '23, and Mrs. Gaddum, formerly Louise Babb, A.B. '16, daughter of Mr. and Mrs. J. G. Babb of Columbia, announce the birth of a son, Joseph Glenn, on September 20. They have one other child, a son, Jerry. Dr. Gaddum was formerly assistant professor in physical chemistry in the University but is now doing research work on the separation of pectin from citrus fruits at the experiment station, University of Florida, Gainesville.

F. N. (Jack) Flynn, B.J. '24, A.T.O., Sigma Delta Chi, and Mrs. Flynn, formerly Margaret M. Barnes, A.B. '24, Kappa, announce the birth of a son, Francis Arthur, on September 7, at their home in Tokyo, Japan, where Mr. Flynn is in the commercial printing department of the Japan Advertiser. He was formerly advertising manager for the Stephens Publishing Co., of Columbia.

Stephen Kearny Owen, LL.B. '11, Phi Delta Theta, Attorney, 903 Corby-Forsee Bldg., St. Joseph, Mo., and Mrs. Owen, formerly Elsie Warren A. B. '14, Kappa Kappa Gamma, announce the birth of a daughter Mary Alice on May 17, 1926 at their home 1027 Henry St. Mr. Owen was formerly assistant Attorney General of Missouri and Prosecuting Attorney of Buchanan County.

Dr. Clyde Dyer, A.B. '09, Physician and Surgeon, Metropolitan Bldg., Grand and Olive, St. Louis, Missouri and Mrs. Dyer announce the birth of a daughter Dorothy Jean on July 2 at their home 113 E. Cedar, Webster Groves, Mo. They have a son John Elwin 10 yrs.

Fred R. Deaton, A.B. '14, LL.B. '16, c/o Stern Brothers & Co., Kansas City, and Mrs. Deaton, formerly Elizabeth Abernathy, 432 W. 58th Terrace, announce the arrival of a son, Fred Ross, Jr., on August 22.

Mrs. Willard L. Nash, A.B. '22, Alpha Gamma Delta, formerly Helen Genevieve Jennings, and Mr. Nash, Soochow, China, announce the arrival of a son, Richard Jennings, on August 12. Mr. Nash is connected with Soochow University.

John Cook Hickerson, B.S. in Ag. '17, Phi Gamma Delta, formerly of Moberly, now Division Salesmanager, Animal Feed Dept., Cudahy Packing Co., and Mrs. Hickerson, formerly Lucille Lynch of Moberly announce the birth of a son John Cook, Jr., on

September 27, at their home, 4808 Oak St., Kansas City, Mo.

Dr. Hanford Phillips, A.B. '23, and Mrs. Phillips, Hingham, Mass., announce the arrival of a daughter, Marilee, on August 20. Dr. Phillips is a graduate of St. Louis University.

SAVITAR WINS SECOND PLACE

The 1926 Savitar won second place in the college annual contest conducted each year by the Arts Craft Guild. The Savitar has the reputation of being "America's finest College Annual." The Savitar was awarded first prize in 1922, '23 and '25 and second in '24 and '26. Hugh P. Williamson was editor of the 1926 Savitar; Donald Reynolds, Business Manager, Louis Kohn, Associate editor; and Raymond Miller, Advertising Manager.

Paul Parson, Columbia Photographer, who advertises regularly the Alumnus, and Mrs. W. S. Branham, have opened an art shop known as the "Red Paisley," in the place formerly occupied by the late Joe Janousek. In the window is a large Samovar with this placard: "This is a Samovar used by Russians to brew tea—not to be confused with "Savitar" a Hindu word meaning, "The best college annual in America."

BOARD OF CURATORS MEET IN ROLLA

The Board of Curators met at Rolla on September 18. A. A. Speer of Jefferson City, a new member of the board, was elected to membership on the executive committee to succeed the late Frank H. Farris. H. W. Lennox new member from Rolla was sworn in.

Two instructors were appointed.—T. A. Brady, in history, and Grace Thurman Tandy, in the University Elementary School. T. M. Keyser was appointed county agent of Cape Girardeau County.

The resignations considered were those of B. B. Branstetter, extension those of B. B. Branstetter, extension agent of Clay County, and Virginia Reid, record clerk in the extension Division.

TAU BETA PI CONVENTION HELD IN COLUMBIA

Tau Beta Pi, honorary engineering fraternity held their three day annual National convention at the University during the week-end of the Tulane game. The convention was held here for the first time when the local chapter was installed in 1904. There are now 52 college chapters with 13,000 members. A. D. Moore, University of Michigan, President; H. H. Higbee, University of Michigan, Vice-President; and R. C. Mathews, Knoxville, Tenn., Secretary-Treasurer, attended the convention.

Dr. Isidor Leob, B.S., M.S., LL.B. '93, Dean of the School of Commerce, Washington University.



Eleanor M. Long, A. B. '22, of St. Joseph, and Dr. Eldred V. Thiehoff, A. B. '21, A. M. '22, Monroe City, were married on June 30. They are at home in Bolivar, Mo., where Dr. Thiehoff is practicing.

Elizabeth A. Agee, B.J. '23, A.B. '24, Jay L. Torrey Scholarship in Journalism, Publicity Director of the Tuberculosis Society, Equitable Bldg., St. Louis, formerly of Columbia, and Henry Arthur, Kappa Sig, Delta Theta Phi, Pres. Student Body, Washington University, president of their Glee Club, of St. Louis, have announced their engagement.

W. M. (Bill) Howat, B. S. Ag. '24, Alpha Gamma Rho, County Agricultural Agent, Taylorsville, Ky., was married on Sept. 2 to Freda Kenner of Bells, Tenn., an alumnus of Logan College and a teacher of French and Expression. They motored through Missouri on their honeymoon.

Lauretta B. Ferguson, A. B. '13, formerly of Tipton, Mo., was married on July 21 to B. D. Cornett of Blytheville, Ark., of the accounting department of the Arkansas Missouri Power Co. there. They are at home at 1120 W. Chickasawba, Blytheville, Ark.

William Gibbons Lacy, B. J. '20, Sigma Delta Chi, and Mildred Diana Bollinger were married on August 13 in Chicago. Mr. Lacy is writing technical articles for farm magazines. They will be at home after November 1 at 1110 Rosemont, Ave., Chicago.

Mildred E. Irish, A. B. '23, Mortar Board, Zeta Sigma, who has been doing secretarial work in Chicago, and John W. Sylvester, B. S. in Eng. '21, M. E. '22, refrigerating engineer, Pillsbury-Becker Co., St. Louis, were married on October 6. The wedding is the culmination of a romance started when both were students in the University.

Ruth Caldwell, former student '25, and Elmer Self, Vivian, La., were married on July 27, at Hot Springs, Ark. Mr. and Mrs. Self are at home in Louann, Ark.

Lee Carl Overstreet, LL. B. '25, Phi Delta Phi, Order of Coif, American Law Book Co. Prize '25, member of the law firm of Morrison, Nugent, Wylder & Berger, Kansas City, was married recently to Miss Mary Elizabeth Polk, A. B. '26, daughter of Mr. and Mrs. Walter C. Polk, 435 W. 61st Street, Kansas City.

(Continued on Page 61)

The Missouri Alumnus

Established 1912



R. L. (BOB) HILL, Editor and Manager

Officers Of The University Of Missouri Alumni Association.

Frank B. Rollins, L.L. B. '11, Columbia, President. George C. Willson, Jr., A. B. '11, L.L. B. '14, St. Louis, First Vice-President. Miss Elsa Bradley, A. B. '24, Kansas City, Mo., Second Vice-President. R. L. (Bob) Hill, B. S. in Ag. '12, M. S. '13, Columbia, Secretary. S. F. Conley, A. B. '90, Columbia, Treasurer.

Board of Directors composed of representatives of Alumni Associations of Divisions in the University; Agriculture, T. J. Talbert, Columbia, Mo.; Engineering, L. M. Defoe, Columbia; Law, Jas. Sydney Rollins, Columbia; Education, F. H. Barbee, Kansas City; Arts, Guy V. Head, Columbia; Journalism, Frank R. Rucker, Independence; Business and Public Administration, Royal D. M. Bauer, St. Louis; Medicine, Dr. A. W. Kampschmidt, Columbia; Graduate, Ralph Watkins, Columbia.

Subscription to the Alumnus is \$3 a year. Life Subscription is \$45.

Changes of address should be received by the Missouri Alumnus before the fifteenth of the month to insure prompt delivery of the magazine for that month.

Checks, drafts and money orders should be made payable to the Missouri Alumnus and all business correspondence should be so addressed. Address all news items to the Managing editor of the Missouri Alumnus, 114 Jesse Hall, Columbia, Mo.

Should a subscriber wish to discontinue his subscription, notice to that effect should be given before its expiration. Otherwise it is assumed that a continuance of subscription is desired.

Member of Alumni Magazines Associated.

Presidents and secretaries of the 114 county Alumni Associations in the state of Missouri should read carefully the following editorial printed in the Kansas City Star, October 13. Frank B. Rollins, President of the Alumni Association, is particularly anxious that every county Alumni Association president and secretary read this editorial:

THE UNIVERSITY OF MISSOURI NEEDS HELP.

While Missouri has been providing more funds for rural education, particularly for rural high schools, the state university at Columbia has been woefully neglected. The zeal for the "little red schoolhouse" apparently has caused some of the leaders in education to forget the needs of the state university. Missouri cannot have a well balanced school system without a university comparable to those of her sister states.

The board of curators will ask the legislature which convenes in January a biennial appropriation of about 6 million dollars for the university. It makes little difference how much the legislature appropriates unless state revenues are provided sufficient to meet the sums voted. Too often it has been the practice of legislatures to make large appropriations for the university, but for political reasons to re-

fuse to provide the necessary revenue from taxation. It is popular to be generous with the state school, but unpopular to add new taxes. The result has been, since 1923, the governor has been forced to veto or withhold large sums voted by the legislatures.

In the last few years, Missouri has had too much poverty talk. It has been disseminated largely by the politicians. There will always be reasons why the state's economic condition is such as to prevent adequate support for its institutions. During the last six years, when the farmer has passed through his period of greatest distress, the elementary and secondary schools have been provided for as never before. That was right. While the politicians have been moaning over taxation, which for state purposes now is vastly less than six years ago, Missouri has been building a magnificent system of roads. The motor car owners have dug up the millions required for paved roads with no difficulty.

Missouri has the oldest state university west of the Mississippi River, rich in tradition, and deserving of public support. But the University of Missouri cannot maintain its position among the state schools of the middle West, if half completed buildings are permitted to stand for years on its campus; or, it has insufficient funds to hold its teaching staff. The quality of its teachers is even more important than the buildings and equipment.

The university has its graduates and friends in every county of the state. Let them get busy and see that representatives and state senators are elected with the courage, not only to vote sufficient appropriations for the university, but to provide sufficient revenue so the appropriations can be made available.

The alumni and former students are acquiring the habit of notifying the alumni recorder's office, 217 Jesse Hall, Columbia, when they change address or business, receive a promotion, get married or do anything worthy of note. This is fine. If the alumni and former students do not notify the alumni recorder's office about these things there is no way on earth for the alumni records to be corrected.

MANY ALUMNI VISIT THE UNIVERSITY

Franklin M. Nash, B.S. in E.E. '06, Hydro-Electric Engineer, Superintendent of Hydro Plants, Corinth, N. C., and his wife, formerly Juliet L. Gilmer, Sioux City, Ia., and their two children, Benjamin M. and Louise E. "If every alumnus and former student who hasn't subscribed to the Memorial Tower and the Memorial Stadium, could see these two memorials, I venture the statement that all of them would subscribe, and will do so when they see these buildings," said Mr. Nash. He was just completing a six thousand mile motor trip.

Pretty Lyrics in Volume by Orrick Johns '05-'08

From the St. Louis Globe Democrat: "Wild Plum," by Orrick Johns, Reviewed by Martha Gellhorn. (Macmillan Company.)

Lyrics are not expected to be heavily serious, brutally impressive poems. Their charm lies, usually, in their piquancy, their slender loveliness, their fragile subtlety. One must not read "Wild Plum" looking for any great depth of thought, or vital purpose. One must read with an appreciation of delicate tones and soft shadows.

"Stars," with its smooth music, is just such a lilting song; only one is apt to think, "This is not new, not even differently sung."

"The Answer," a poem which has appeared previously elsewhere, seems to us the best of Love Songs, which is the title of the first group of lyrics. In "The Answer" is potent braveness, the unheeding braveness of youth—and pride.

The name of the next grouping (Mr. Johns has divided his book into four parts) Perspectives. Of these lyrics the title poem "Wild Plum," is outstanding.

"WILD PLUM"

They are unholy who are born
To love wild plum at night,
Who once have passed it on a road
Glimmering and white.

It is as though the darkness had
Speech of silver words,
Or as though a cloud of stars
Perched like ghostly birds.

They are uplifted from their birth
And homeless in men's sight
Who love better than the earth
Wild plum at night.

Congressman Cleveland A. Newton, L.L.B. '02, of St. Louis, has recently returned to Washington from a tour of Hayti, Panama and Costa Rica. He was accompanied by Mrs. Newton and their son, John. At Costa Rica they were the guests of Roy T. Davis, United States Minister, and Mrs. Davis, formerly of Stephens College, Columbia.

Congressman Newton is not a candidate for re-election in Congress. He is going to St. Louis real soon to practice law. His record in Congress has been an outstanding one and his activities in behalf of waterway transportation has attracted national attention.

Dr. Omer R. Gullion, A.B. '04, Eugene, Oregon, 321 I.O.O.F. Temple, will represent his alma mater on the occasion of the inauguration of Dr. Arnold Bennett Hall as President of the University of Oregon, Oct. 18-23. That institution will also celebrate its Semi-Centennial at the same time and Dr. Gullion will also serve as our representative on that occasion.

WEDDINGS

(Continued from Page 59)

Mack Keeble, former Tiger track star, 1923-24, Sigma Chi, was married on August 17 to Miss Daisy Frances Taylor of Ballinger, Tex. They are at home in Elgin, Tex., where Keeble is associated with his father in the banking business.

John J. Spriggs, L.L. B. '06, Lander, Wyo., and Miss Martha West, B. S. in Ed. '23, who has been teaching in the English Department of the Fremont, Cal., High School, at Landers, were married recently. Mr. Spriggs was formerly a member of the House of Representatives of the Wyoming legislature, '11-'13, and was U. S. Commissioner, district of Wyoming, for six years. He is a veteran of the Spanish-American War.

Samuel A. Megeath and wife of Yonkers, N. Y., announce the marriage of their daughter Metta Miller Megeath to Captain Paul H. Streit, on September 15.

Dr. Forrest L. Martin, A.B. '22, A. M. '23 of Eldorado Springs, Mo., was married on September 22 to Miss Dorothy Frances Martin, daughter of Dr. and Mrs. C. F. Martin, 6814 Main Street, Kansas City, Mo. Dr. Martin met his bride while she was a patient in a hospital after a motor car accident two years ago. Miss Martin taught expression in the Southwest high school last year.

Raymond P. Brandt, B.J. '19, Rhodes Scholarship '19, Sigma Delta Chi, Kappa Tau Alpha, Washington Bureau, St. Louis Post-Dispatch, Washington, D. C., and Adele Harrison were married on September 11.

Miss Mary Aones Booth, B.S. in Ed. '26, Delta Gamma, St. Louis, has announced her engagement to William Frank St. Clair, son of Rev. W. S. St. Clair of Columbia. The wedding will take place in January.

Dorothy Leatham, A.B. '25, Pi Phi, Memphis, Tenn., and Thomas M. Nelson, A.B. '24, A.M. '25, Sigma Nu, c/o Sun Oil Co., Dallas, Tex., were married on October 4.

Richard W. Yost, '21-'24, Pi Kappa Alpha, Bonifay, Fla., and Anaiu Jeffries, were married on September 3. They will make their home in Bonifay, Fla.

J. Sterling Harkins, B.S. in B. & P. A. '24, 601 Title Guaranty Bldg., St. Louis, Kappa Alpha, and Elizabeth Rosanna Dixon, Demopolis, Ala., were married on August 30. They will be at home at 225 Woodbourne Drive, St. Louis.

Margaret Gibson, '23-'24, Pi Phi, Nevada, Mo., and George E. Page,

'20-'24, Beta Theta Pi, Kansas City, will be married on October 16.

Agnes L. Thumser, B.S. in Ed. '23, Alpha Chi Omega, Lockwood, Mo., and Dr. Richard B. Rutledge, A.B. '17, A.M. '21, Winfield, Kansas, were married on September 6.

Lurlie Ann Barnes, '24, and C. W. Buddemeyer, both of Columbia were married in September.

George A. Spiva, former student, Beta, prominent in University dramatics, now of Joplin, Mo., was married there on September 24, to Miss Agnes Schnurr, Pi Phi, a former student of the University of Kansas.

Dorothy Lee Brown, B.J. '25, Delta Delta Delta, Oklahoma City, Okla., and B. P. Bolton, B.J. '26, Pi Kappa Alpha, Sigma Delta Chi, Kappa Tau Alpha, Fairfax, Okla., were married on September 7. They are at home in Detroit, Mich.

Lloyd O. Gutting, B.S. in Ag. '26, Alpha Gamma Sigma, Alpha Zeta, Kahoka, Mo., and Bessie Harris, were married on July 24. They are at home in Ridgeway, Mo., where Mr. Gutting is teaching agriculture in the high school.

Harriett Palmer, B.S. in Ed. '22, Chi Omega, Columbia, and John B. Owen, '17-'20, Sigma Chi, Clinton, Mo., were married on September 7.

Emery F. Paxton, B.J. '26, Phi Delta Theta, Sigma Delta Chi, Kappa Tau Alpha, Scabbard and Blade, c/o Philadelphia Public Ledger, Philadelphia, Pa., and Ruth Bursum, of Socorro, N. M., will be married on November 21.

Lyman George Neel, B.S. in Ag. '25, Alpha Zeta, Callao, Mo., and Mayme Montague, '23-'24, Columbia, were married on September 10. They will be at home in Carlinville, Ill., where Mr. Neel is the assistant farm advisor.

Betty Baker, '24, Delta Gamma, and Robert Shirk, both of Kansas City, have announced their engagement.

Henry Bradford Tibbitts, '21-'23, Sigma Nu, Chicago, and Miss Helen Evans of Waukegan, Ill., were married on August 1.

VOCATIONAL AGRICULTURE TEACHERS TO MEET

The teachers of vocational agriculture of Missouri will hold their seventh annual conference in Columbia, October 13, 14, and 15, according to Sherman Dickinson, in charge. Many of the vocational teachers are graduates of the Missouri College of Agriculture.

W. L. Johnson, C.E. '12, is Highway Engineer, Twin Falls, Idaho.



Rev. William Henry Burnham, A.B. '62, A.M. '65, 87 years old, retired Baptist minister of Columbia, died on September 13 of infirmities of age at Boone County Hospital. He had lived in Columbia since 1917, moving here from Fulton, when his wife died. He leaves a daughter, Mrs. Pearl Beauchamp, Columbia, and a son, H. S. Burnham of Wichita Falls, Tex.

Mr. Burnham was elected President of the Southwest Baptist College, Bolivar, Mo., in 1889. He resigned in 1893. He was a veteran of the Civil War.

Joseph Alexander Smith, born March 16, 1922, son of J. Louis Smith, and Mrs. Smith, formerly Anna Morrill, A.B. & B.S. in Ed. '07, of Covington, La., was drowned at Madisonville, La., on Sept. 12. Mr. and Mrs. Smith were with a party of friends boarding a yacht, when the baby fell in the river.

E. H. Newcomb, B.S. in Ed. '21, Executive Secretary of Lincoln and Lee University, Kansas City, attended the Southern Methodist Conference in Columbia in September.

Mrs. Thomas W. Parry, Jr., formerly Exie Gray, B.J. '23, Pi Beta Phi, Zeta Sigma, Gamma Alpha Chi, and Student Council, and daughter Jean of St. Louis visited her parents, Mr. and Mrs. R. H. Gray, in September.

James F. Rooker, B.S. in E.E. '11, Telephone Engineer for the Western Electric Co., Hawthorne Station, Chicago, has been transferred to their

Mrs. Eugene E. Montgomery, Jr., A.B., L.L.B. '21, Phi Delta Theta, age 24, member of the law firm of Lathrop Fox and Moore, First National Bank Building, Kansas City, Mo., was killed in a train wreck on September 23 at Hericy station, Fontainebleau, France, according to a cablegram received by his parents Mr. and Mrs. E. E. Montgomery of Blue Springs, Mo., from Dr. Manley O. Hudson, a friend, and professor of international law, attached to the League of Nations in an advisory capacity. Dr. Hudson formerly was a teacher at the University and later professor of international law at Harvard. Through him Montgomery was named in one of the secretaryships, after having served as a guide to American tourists who desired to inspect the league buildings and activities. In the cablegram, Dr. Hudson stated he had gone to the scene of the wreck, and had identified and taken charge of the body preparatory to having it returned to the

United States. Mr. Montgomery was returning home from Geneva. A telegram from his parents at Blue Springs was found on his body, saying they were expecting his arrival.

new plant at Kearny, N. J. His address is 747 Fairacres, Westfield, N. J. Mr. and Mrs. Rooker and their son spent a day at the University during the summer.

Isaac N. Skelton, A.B. '24, LL.B. '26, President of the Class of 1926, democratic candidate for prosecuting attorney for Lafayette County.

Prof. Charles Stumberg, A.B., L.B. '89, A.M. '92, and Mrs. Stumberg, and daughter Josephine, of Baton Rouge, La.

Duane L. Tice, A.B. '17, Acacia, Phi Delta Phi, engineer of the W. F. Quarrle & Co., the World Book Organization, 154 E. Erie St., Chicago, and Mrs. Tice formerly Grace Miller Reeves B.S. '16, A.B. '17, Phi Mu. Mr. and Mrs. Tice had motored from Chicago to Kansas with their three children.

William H. Utz, LL.B. '89, Judge of the Circuit Court, St. Joseph, Mo., visited the University during the Southern Methodist Conference. Judge Utz was formerly assistant prosecuting attorney of Buchanan County, '95-'96, and has been circuit judge there since 1918. His daughter, Alice Ruth, attended the University last year, and their son, William H., Jr., is enrolled this year.

WHAT THE OLD GRAD IS DOING



David H. Eby, LL.B. '74, Phi Alpha, is an Attorney, Hannibal, Mo.

Fletcher Cowherd, LL.B. '79, Phi Beta Kappa, President of the Fletcher Cowherd Real Estate Company, and the Safety Savings and Loan Company, 900 Grand Avenue, Kansas City, was severely injured on September 6, when struck by a motor car.

He writes that he has about recovered and, "I enjoy the Alumnus very much and read every bit of every number. It is very interesting."

Thomas M. Young, '81-'82, traveling salesman for Liggett-Myers Tobacco Co.

Chas. C. Browning, M.D. '83, 700 Merritt Bldg., Los Angeles, writes, "I wish to acknowledge the receipt of the certificate of membership in the Memorial Union and Stadium. I appreciate this not only for the sentiment which it embodies but I think it is one of the most beautiful, appropriate and artistic certificates of membership which I have seen."

Richard Huff Emberson, Pe.B. '85, B.S. '05, is Professor of Rural Education, 209 Agricultural Bldg. Professor Emberson was assistant state superintendent of schools '04-'05, vice-president of the Missouri State Teachers' Association '05, President of the Midwest Teachers

Association '08, member of the executive committee of Missouri State Teachers Association '09-'12, and a member of the Union Literary Society and Debating Club.

Robert M. Barnes, B.S. in Agr. '88, Banker, Scotland County National Bank, Memphis, Mo.

John T. Garrett, T.E. '88, C.E. '98, is President of the Missouri Bridge & Iron Co., 1000 Fullerton Bldg., St. Louis.

William B. Cauthorn, C.E. '91, Civil Engineer, City Hall, Columbia.

Homer R. Mitchell, LL.B. '95, Phi Delta Phi, vice-president and general manager of



George A. Bond, Jr., B.S. in Ag. '22, Phi Delta Theta, QEBH, captain of 1922 Basketball team and Basketball coach at the University from 1923 to 1926 resigned on Oct. 1 and is now associated with the General Motors Acceptance Corp., 3638 Olive St., St. Louis. He married Estelle Robnett, Phi Beta Phi of St. Louis on September 25, 1924. They are at home at 5558 Maple Ave., St. Louis, Mo.

the Texas Employers' Insurance Association and of the Employer's Casualty Company, Dallas, Texas, has been chosen president of the National Association of Mutual Casualty Companies. He was honored with a banquet after his return to Dallas after this annual meeting. His son, James, is enrolled in the University. Mr. Mitchell was former president of the Dallas Alumni Association and President of the University Club there.

Edward White, LL.B. '91, Phi Delta Phi, Lawyer, 1118 Railway Exchange Bldg., St. Louis, Mo.

Norman Colman Riggs, B.S. & M.S. '95, Phi Beta Kappa, is Prof. of Mechanics, Carnegie Institute of Technology, Pittsburgh.

William Buchholz, LL.B. '96, Attorney, 309 Scarritt Bldg., Kansas City, has enrolled his son, George, in the University this fall and the youngster is making a wonderful showing on the freshman football team, under the guidance of Coach Stankowski. George's father was a member of the famous football team of 1895. That's plenty said!

John Henry Norton, B.S. in Ag. '97, B.S. '99, M.S. '07, football '96, is teaching, Sacramento (Cal.) Junior College.

Mrs. Rosalie Gerig Edwards, A.B. '00, A.M. '01, Phi Beta Kappa, Spanish instructor in the extension department of the University of

California and in the Commercial Department of the San Diego High School, spent the summer in Old Mexico, studying international problems. Mrs. Edwards has accepted a great number of speaking engagements to discuss the work she did in Old Mexico. She is known as one of the most popular and successful teachers of Spanish in the West.

Oak Hunter, LL.B. '00, famous football player, Sigma Nu, representative in the Missouri Legislature from Randolph County from Moberly and former speaker of the House of Representatives, and Walter Robertson, honorary member of the Saline County Alumni Association, and representative in the Missouri Legislature from Saline County, Marshall, visited the University on September 14.

Forest S. Lyman, B.S. in E.E. '00, E.E. '03, Kappa Sigma, Tau Beta Pi, QEBH, is Valuation Engineer, Western Union Telegraph Co., 195 Bldg., New York City.

J. Paul Biggs, '98-'02, Cashier, Arrow Rock (Mo.) Stock Bank, and Mrs. Biggs, are in charge of the Old Tavern, built in 1830, at Arrow Rock, recently restored by the Daughters of the American Revolution, and purchased by the State of Missouri. Mrs. Biggs is hostess. The Old Tavern has been modernized in every respect and is a delightful place to visit.

Dr. Edwin Lee Miller, A.B. '02, 2 yrs. in Med., Beta Theta Pi, QEBH, is a surgeon, 800 Rialto, Kansas City. He married Miss Faith Pearce, B.S. in Ed. '05, in 1910. They have three sons.

George L. Morehead, B.S. in M.E. '02, is Manager of the Link-Belt Company, 2045 Hunting Park Avenue, Philadelphia. He married Miss Bessie Stevens in 1914. They have one daughter, Barbara Haviland, age seven.

Dr. Lake Brewer, A.B. '03, M.D. '08, is a Physician, Ridgeway, Mo.

Raymond Luther Cargill, B.S. in E.E. '05, Phi Gamma Delta, Banker, Commerce Trust Co., Kansas City, Mo.

E. S. Haynes, A.B. '05, A.M. '07, Phi Beta Kappa, Sigma Xi, Delta Tau Delta, Acacia, is Professor of Astronomy, University of Missouri.

James D. Reid, LL.B. '05, Phi Beta Pi, Kappa Alpha, is a Physician, Wellsville, Kan.

Francis Emmett Williams, LL.B. '05, Phi Delta Phi, Attorney Suite 502-6, Title Guaranty Bldg., St. Louis, Mo.

Earl Querbach, B.S. in C.E. '06, C.E. '08, Tau Beta Pi, Delta Tau Delta, QEBH, is Structural Engineer, American Bridge Co., Ambridge, Pa.

F. Louise Nardin, B.S. '07, A.M. '13, Ph.D. '14, is Dean of Women, University of Wisconsin, Lathrop Hall, Madison.

William Edmund Price, B.S. in C.E. '07, is Building Contractor, 605½ W. Main, Oklahoma City, Okla.

Dr. Dan G. Stine, A.B. '07, who is practicing medicine in Columbia and a member of the faculty of the School of Medicine, was recently operated on for appendicitis.

Henry Elliott, Jr., A.B. '08, LL.B. '10, Phi Beta Kappa, Theta Kappa Nu, Delta Sigma Rho, Phi Delta Phi, Attorney, 412 Dexter, Horton Bldg., Seattle, Wash.

Mrs. Elbert T. Bartholmew, B.S. in Ed. '09, A.B. '10, A.M. '12, Ph.D. '16, Phi Beta Kappa, Sigma Xi, fellowship in Botany, U. of Wisconsin, is residing at 118 N. Mulberry Street, Riverside, Cal. She married Dr. Bartholmew, Botany Department, University of Wisconsin, in 1916. They have two daughters, Martha Lucille, age five, and Lois Jeanne, age two. Her brother, W. Arch Keene, attended the University from 1903-'05. Her niece, Edith Dubail, was enrolled from '21-'24. Dr. and Mrs. Bartholmew visited the University

How to Get
DAILY
NEWS
 of the
TIGERS--

Just clip the coupon below, pin a couple of dollar bills to it (or your check) and mail it to

THE MISSOURIAN

A sports page full of Tiger and Valley "dope" every day; private leased wire for every game; play by play accounts of each game.

Subscribe Today!

The Daily Missourian
 Neff Hall, Columbia

Herewith find my \$2. I want the Daily Missourian for the entire football and basketball season of 1926-27, ending next March. Start my subscription at once.

Name

Street

Town

during the summer. She writes, "California is a long way from Missouri but each month's copy of the Alumnus takes me back to the campus and keeps my interest alive. Long life to the Alumnus."

John W. Read, A.B. '09, Sigma Alpha Epsilon, is in Shoe Business 811-8th St., Greeley, Colo. He married Miss Julia Kirtley, A.B. '09, formerly of Kansas City. They have one daughter.

Mary Paxton Keeley, B.J. '10, Kappa, is on the Athison County Mail, Rockport, Mo.

Emil A. Roehry, E.E. '10, Sigma Nu, former General Manager of the Illinois Power and



Dr. Thomas G. Orr, A.B. '07, M.D. John Hopkins '10, Beta Theta Pi, QEBH, Professor of Surgery and acting head of that Department, University of Kansas, was elected President of the Missouri Valley Medical Society on September 17, at the annual meeting in Omaha.

Light Corporation, Champaign, Ill., has been promoted to general manager of the St. Louis, (Mo.) Terminal Railway, Co., 3725 N. Broadway. He married Miss Mary Frances Zook of St. Louis in 1925. Since graduation Mr. Roehry has been General Manager of the Cairo Electric & Traction Co., Cairo City Gas Co., Cairo and St. Louis Railway Co., and the Mounds City Light and Power Co.

B. H. Stonebraker, A.B. '10, is President of the Inland Printing Co., Springfield, Mo.

Warren S. (Peck) Branham, B.S. in Agr. '11 is in the insurance business, Boone County National Bank Bldg., Columbia.

Lloyd F. (Pete) Burress, B.S. in M.E. '11, former football star, superintendent of the Coke Plant, Illinois Steel Company, Gary, Ind., and Mrs. Burress, formerly Bess Smith, were guests of Mr. and Mrs. S. T. Simpson.

James Elmer Dunn, B.S. in C.E. '11, Tau Beta Pi, is General Manager, Canelo Motor Co., 350 W. Santa Clara St., San Jose, Cal. He married Clara Henze of Detroit, Mich., in 1918. They have one son.

Rev. Edward Henry Eckel, Jr., '11, is a clergyman, St. Paul, Minn., home address, 77 Macalester Ave.

(Continued on Page 66)

Football Fans:—

Where Are You Going to Sleep?

To you from St. Louis and all points east of Columbia who plan to drive to Columbia this fall for one or all of the football games in the new Memorial Stadium, this service is offered:

The Palace Hotel at Fulton will be glad to reserve accommodations for you for the Friday nights before and the Saturday nights after the games. Drive to Fulton, spend the night, drive to Columbia the next morning, see the game in the afternoon, drive back to Fulton and spend the night, and then drive home.

A very good and practical thing to do! By so doing you'll enjoy a dandy weekend and not arrive home tired out as a result of all-night driving.

The rooms and meals at The Palace Hotel are excellent. The proprietor is Waldo F. (Cap) Smith, one of the most hospitable and best liked hotel men in Missouri.

Fulton is a dandy town and visitors who spend the night there will enjoy a drive in this "Kingdom of Callaway" and see Westminster College, Synodical and William Woods Colleges for girls, the State School for the Deaf, and the State Hospital there.

Write, wire or call "Cap" Smith for reservations—better do it now, for the thirty thousand persons who will see every game in the new Memorial Stadium this fall will tax the capacity of all hotels. And think what a crowd will be in Columbia Nov. 20, Homecoming Day, for the formal dedication of the Memorial Tower and Memorial Stadium and the Kansas-Missouri football game! Whew!

The Palace Hotel
 Fulton, Missouri

To the Memorial Union and Stadium Subscribers:

We want all of you to come back on Homecoming Day, November 20, and participate in the dedication of the Memorial Tower, the first unit of the Memorial Union and in the dedication of the first unit of the Memorial Stadium. Plans are now under way to make the dedication most impressive and to make it an event long to be remembered by all who witness it. The completion of these Memorials and their presentation to the University as the first gift of the alumni, students and friends to the institution will be an event long to be remembered. You should make special effort to be present. You will be thrilled by the beauty of the Tower, and the magnitude of the Stadium, and you will be glad of the part that you have had in their construction. Your loyalty to alma mater will be deepened and your pride in the record of her heroic sons whose memory these Memorials will perpetuate will be vastly increased. The parents of all the boys whose names are on the Honor Roll have been invited to attend the dedication exercises and prominent men both in State and National affairs will participate.

Somewhat more than a year ago, the Memorial Committee of Nine, a Committee that has been in charge of the Memorial Campaign since the beginning, appointed a Committee to make up the Honor Roll. This Committee has submitted the following report:

We, the Committee, appointed by the Memorial Committee of Nine, to make up the official Honor Roll of names to be inscribed in the Memorial Union and the Memorial Stadium, certify that we have examined the records in the office of the Director of the Memorial Union and Stadium Campaign and that the following one hundred and sixteen names are entitled to be on that list:

1. Henry Gerhard Arends
2. David Francis Banks
3. Theodore Boleslaw Bazan
4. Forrest Lambert Bell
5. John Cone Black
6. James Kennedy Black
7. David Edwards Blackburn
8. William Ewing Boone
9. Wade A. Boots

- | | |
|-------------------------------|------------------|
| 10. Lloyd Reuben Boutwell | 40. Poe Ewing |
| 11. Martin Frady Bowles | 41. Joseph Berna |
| 12. Leon Elston Briggs | 42. Clinton Stur |
| 13. Sanford Miller Brown, Jr. | 43. Ray Philli |
| 14. William George Brown, Jr. | 44. William Th |
| 15. John Clarence Burk | 45. Charles Clif |
| 16. Allen Green Byram | 46. John Gray |
| 17. Lawrence Hosmer Capehart | 47. Garnett Fra |
| 18. Roy Ernest Carr | 48. Robert Mc |
| 19. Joel Hayden Challis | 49. James Edwar |
| 20. Joseph Peyton Chamberlain | 50. Laurence He |
| 21. Henry Robinson Clay, Jr. | 51. William Dou |
| 22. David Israel Cole | 52. Earl Punslo |
| 23. Andrew Floyd Collins | 53. James Colve |

*Will it not be a pity to present
the University a Memorial Tower and
we have not paid? If every delinquent
owes, the Memorials can be dedicated
some sacrifice on your part to see
send in today what you owe?*

- | | |
|--------------------------------|------------------|
| 24. Amos Mathieu Colman | 54. Wendell Ph |
| 25. Paul Edward Corriveau, Jr. | 55. Harry Herr |
| 26. Paris Craighead | 56. Ledlie Fran |
| 27. Harry Chase Crumb | 57. Harry Fran |
| 28. Rolly Winchester Darling | 58. Marvin Ray |
| 29. Murray Davis | 59. Winston Ho |
| 30. Ealy Beverly DeVinna | 60. Lester How |
| 31. Clement Parks Dickinson | 61. Victor Abell |
| 32. Charles Elliott Dixon | 62. Harold Jam |
| 33. John Jay Donnohue | 63. Harley Clift |
| 34. Benjamin Stanford Drain | 64. James Philip |
| 35. Claude Luverne Duff | 65. George And |
| 36. Lee Samuel Eads | 66. Robert Patte |
| 37. Earl McCann Edgar | 67. Charles Wal |
| 38. Leonidas Verne Ellis | 68. George Our |
| 39. Ivan Hollis Epperson | 69. Charles Jaco |

- ard Fast
ner Ferry
ook Fox
omas Franklin
ord Galbraith
Galbraith
nk George
Ghee Graham
ard Gray
enry Gray
uglas Gray
on Groesbeck
ell Harris
70. Ray Marion Karls
71. David Chenoweth Killam
72. Yaro Klepel
73. Hawthorne Eugene Kyser
74. Clarence Franklin Layher
75. Charles Holmes McCoun
76. Clinton McFarland Marsh
77. Frank Parks Mathews
78. Charles Hammett May
79. Herbert Clarence Meier
80. Jerome Earle Moore
81. Clinton French Moss
82. Norman Lloyd Ohnsorg
83. Clarence Bowlan Peeples

100. James Young Simpson, Jr.
101. Minor Mulkey Slaughter
102. John Kenneth Sloan
103. Frank Lawrence Stauver
104. William Dale Stepp
105. Lawrence Williams Stewart
106. Julius Otto Stipp
107. Velpo Wright Street
108. George Bryan Thomasson
109. Robert Steele Thurman
110. Robert Montgomery Walker
111. Raymond Boes Ward
112. Lowell Thayer Wasson
113. Falph Edward Triscuit Wilkins
114. Henry Murray Williams
115. Carlisle Robert Wilson
116. Jacob Henry Young, Jr.

EDWARD M. STAYTON, *Chairman*
Col. 110th Engineers

EDWARD KLEIN
1st Lt. 12th F. A. 2nd Division

VERNE R. WILSON
1st Lt. 137th Inf.

Columbia, Mo.
July 25, 1926.

These names will be inscribed in the archway of the Tower and, later, in the Stadium. They will be put in alphabetical groups without distinction of rank. There will be a second list of names on record in the Memorial Room on the second floor of the Tower. This list will contain the name of every Missouri soldier killed in the Great War. The Memorial Tower and the Memorial Stadium will serve to keep alive the memory of these heroes and will also keep fresh in our minds the high purpose of their devoted service. These Memorials will thus become to us sources of inspiration, and springs of power from which will come a higher conception of our duty to our State and our Nation and strength for noble sacrifices for them, when such are demanded.

Hoping to have the pleasure of seeing all of you on Homecoming Day and rejoicing with you in our completed task, I am

Very truly yours,



as the first gift of the alumni to
and a Memorial Stadium for which
quent subscriber will pay what he
ged free of debt. Is it not worth
that this is done? Will you not

J. C. Jones

- elps Hays
d, Jr.
is Hickerson
s Hickman
Hillyard
rton
rd Hughes
Hunt
s Hutter
n Hyde
Irminger
ew Irion, Jr.
son Irvine
er Jackson, Jr.
y Kane
Karl
84. Alva Dale Pickett
85. Joseph Henry Pierson
86. James Rollins Reid
87. Columbus DeWitt Pypes
88. Herbert Southall Richey
89. David McNeil Robertson
90. Frank Rodhouse
91. Thomas Adam Roth
92. Lovick Ray Rucker
93. Lloyd Calvin Ruggles
94. Joseph Warren Sanborn, Jr.
95. Robert Glardon Scott
96. Guy Wentworth Selden
97. William Guy Shannon
98. Irwin Herbert Shaw
99. James Claude Simpkins

Always Alumni Headquarters.—

During the week-ends of the
football season

and on every day of every year;

The Daniel Boone Tavern

a distinctive Hotel

The ball-room of the Tavern has recently been converted into rooms—every room with a bath. Our dining room facilities in the main dining room and in the Coffee Shop are second to none.

We employ in every department many students who are working their way through the University. They are instructed to cater to the Alumni and former students.

Write, wire, or phone me when you want accommodations at the Tavern.

This will be the busiest season in the history of the University.



DANIEL BOONE TAVERN

Alumni Headquarters

F. W. (Ramrod) Leonard
Proprietor

(Continued from Page 63)

I. W. Helmreich, M.E. and E.E. '11, Tau-Beta Pi, former mechanical and electrical engineer for the public Service Commission of Missouri has resigned to become Manager of the Water Company at Jefferson City, Mo. He will be succeeded by R. E. Duff, B.S. in E.E. '08. Mr. Duff was also Mr. Helmreich's predecessor.

L. S. Palmer, B.S. in Ch.E. A.M. '11, Ph.D. '13, Professor of Agricultural Biochemistry, University of Minnesota, will represent the University of Missouri at the inauguration of John Carey Acheson, as President of Macalester College on October 15.

Harry D. McClaran, A.B. '11, is Supt. of Schools, Davis City, Iowa.

Geo. E. Rhodes, B.S. in Agr. '11, Insurance business, Lee's Summit, Mo.

E. Kemper Carter, C.E. '12, and Albert R. Waters, C.E. '12, are the officers of the Carter-Waters Corporation, 2049 Main St., Kansas City. They never lose an opportunity to do something worthwhile for the University.

Mr. Carter came to the rescue of the athletic department in their efforts to find an asphalt heater and drier used to dry out the new memorial field as a result of the heavy rains, prior to the Tulane game.

Mrs. Roy E. Eblen, A.B. '12, Pi Phi, formerly Lena Johnson, now of 3904 E. Douglass Avenue, Wichita, Kansas, writes that her son, Roy Junior, 7 years old, was stricken with infantile paralysis, July 20, and is improving splendidly and she hopes he will be able to walk without braces in time. Mrs. Eblen's host of friends hope for the youngster's speedy recovery. She has two other children, Claudia, age four, and Billie Bob, born on March 10, last.

Goldena Farnsworth, B.S. in Ed. '12, Sigma Xi, is teacher of Physics, Hollins College, Hollins, Va.

Elmer C. (Robbie) Robinson, B.S. in E.E. '12, Eta Kappa Nu, member of the track teams of '10-'11, is District Manager of the Century Electric Co., 934 Dime Bank Bldg., Detroit, Mich. He married Lina X. Crawford of St. Louis in 1914. They have one daughter, Frances. Mr. Robinson's brother, Chas. C. Robinson, B.S. in E.E. '04, is Superintendent of the Union Electric Light & Power Co. St. Louis.

Mr. Robinson is President of the Alumni Association in Michigan and has plans under way for a big meeting in November.

A. M. Howard, A.B. '13, Stationery and Book Store, Marshalltown, Texas.

Adeline Jesse, A.B. '14, B.S. in Ed. '14, Kappa, Pi Lambda Theta, Delta Tau Kappa, doing Social work, 144 Logan St., Denver, Colo.

Clarence E. Neff, B.S. in Ag. '14, A.M. '15, Sigma Xi, Farm House, teacher of Vocational Agriculture, Higginsville, Mo.

Mrs. Vernon M. Reppert formerly Hazel Henthorn, A.B. '14, is living in Buckner, Missouri where her husband is in the Furniture, Undertaking and Electrical business

Frederick Wm. Shorter, A.B. '14, former minister of the first Congregational Church, at Great Falls, Mont., has accepted the call to the second Pilgrim Congregational Church at Seattle, Wash.

Harland L. Shrader, B.S. in Ag. '14, who for the last seven years has been poultry specialist and project leader in the College of Agriculture, has accepted a government position as extension poultry specialist with the U. S. Department of Agriculture, in charge of this work throughout the U. S. His office will be in Washington, D. C.

REAL NEWS FOR THE ALUMNI!

Leslie Cowan, Secretary of the University, has announced the following committees for the year, beginning September 1, 1926.

Dramatics—Messrs. Branson, H. G. Brown, J. H. Rogers.

Extension Teaching—Messrs. Elliff, Coursault, Germane, Selvidge, C. H. Williams.

Finance—Messrs. DR Scott, Weinbach

Interscholastic Meet—Messrs. Brewer, Elliff, Hill, Quarles, C. H. Williams.

High School Debating Contest—Messrs. C. H. Williams, Belden, Elliff.

Intercollegiate Athletics—Messrs. Brewer, Brooks, Manly, Martin, O. M. Stewart, Tarr, Trowbridge.

Intercollegiate Debating—Messrs. Rankin, H. G. Brown, Langmaid.

Military and Physical Training—Messrs. McCaustland, Brewer, Kerth, Mumford, Ragsdale, Tisdell.

Physical Education for Women—Mrs. Trenholme, Miss Campbell, Miss McKee.

State Fair Exhibits—Messrs. Mumford, Dickinson, Fulton, Newton, Wrench.

University Health—Messrs. Ravenel, Conley, McCaustland, Stine, Mrs. Trenholme.

University Studies—Messrs. Kerner, Edgar Allen, Belden, Coursault, M. F. Miller, Parks, Severance, W. Williams.

This News Furnished by

DORN-CLONEY LAUNDRY CO.

Managed by the Milburn Boys



Come to Spalding's-- Athletic Headquarters

Spalding's are the world's largest producers and sellers of athletic goods... their leadership has been won not by mere price appeal, but by inherent quality. They give you the largest quantity of quality for the price you pay!

Buy Spalding equipment and know what every seasoned sportsman knows—that your golf clubs can shoot a ball straight, far and true. That your tennis balls are those officially used in national championship tournaments. That your football is the one ball used in all important contests. That your sweater will give years and years of wear. That your game won't suffer because of equipment that is short of Spalding perfection! Visit Spalding's... and find the correct athletic equipment for your favorite sport!

A.G. Spalding & Bros.

823 Locust Street
St. Louis, and all large cities.

A. R. Troxwell, B.S. in Agr. '14, B.S. in Ed. '15, Phi Delta Phi, Lawyer, Guitar Bldg., Columbia, Mo.

John L. Bland, '13-'15, Kappa Alpha, is mining engineer, Tinton, S. D.

Houston Harte, B.J. '15, publisher of the San Angelo Evening and Morning Standard and the Sweetwater Daily Reporter, recently bought the Lubbock (Tex.) Morning Avalanche and the Journal.

Dean Chenoweth, '20, Norman Terry, '24, Robert W. Jacobs, '26, Herschel Colbert, '15, and Olin Hinkle, '26, are members of the staffs of these papers. E. A. Soderstrom, business manager of the Columbia Missourian, was formerly advertising manager for the Standard.

Dr. Sara R. Kelman A.B. 2 year Medical Certificate '15, is a Physician, Manhattan State Hospital, Wards Island, New York City.

A. L. Owens, C.E. '17, baseball '15, '16, and '17, formerly of St. Louis is a petroleum geologist, Standard Oil Company, Venezuela, Maracaibo. He married Mary Evelyn Robinson, '15-'16, of St. Louis in 1919.

Reginald W. Ragland, A.B. '15, Attorney, 45 Nassau St., New York City.

Samuel Miller Rudder, C.E. '15, Tau Beta Pi, is Division Engineer, State Highway Commission, Webster Groves, Mo.

J. G. Wells, Jr., Ag. '15, is in Dairy extension work for the Michigan Agricultural College with headquarters at Marquette, Mich.

Miss Emma Cauthorn, A.B. '16, Assistant Professor of Latin in the University, has returned after a year's leave of absence. She accompanied Dean and Mrs. Walter Miller to Europe and studied in Rome in the American Academy and in Athens in the American School of Classical Studies, where Dean Miller was the annual professor for 1925-26. They traveled extensively in Greece, visited the chief cities of Italy and traveled in England, France, Switzerland, Egypt, Constantinople, Sicily and Crete. Dean Miller has returned to Columbia but Mrs. Miller is still in a hospital in St. Louis. Her health is improving.

T. A. Ewing, B.S. in Ag. '16 of Merville, Mo., has been recommended as farm agent for Boone County, Columbia. He has been farming with his two brothers at Morrisville since leaving school. They have one of the good Shorthorn herds of the state. T. A. Ewing's brother, Ed Ewing, B.S. in Ag. '23, will continue with the farm operations.

Dr. Boyd Lorans Grever, medicine '16, eye, ear, nose and throat specialist, 610 Rorabaugh-Wiley Bldg., Hutchinson, Kans., is commander of the American Legion Post there, physician to the Kansas State Reformatory, President of the Health Board of Hutchinson, and a good friend of Harry Tidd's.

Kerfort Moore Griffith, B.S. in Ag. '16, is motor car dealer at Kingman, Kan. His sister, Margaret, now Mrs. R. J. Campbell, of Kansas City, attended the University in 1916. Mr. Griffith married Catherine Heinrich of Kansas City in 1917. They have one son, John K., age eight, and one daughter, Betty Ann, age six.

Frank J. Quigley, A.B. '16, member of the Missouri House of Representatives '20-'21, and State Senate from the 14th Dist. of Missouri in the last session of the Legislature, is practicing Law at Tipton, Mo.

Archie Bedford, A.B. '17, Minister, Church of Christ, 1540 South Salina, Syracuse, N. Y.

H. L. Chung, B.S. in Ag. '17, specialist in tropical agronomy, U. S. Department of Agriculture, Hawaii Experiment Station, Honolulu, writes, "I will make a desperate effort to be in the new Memorial Stadium on Homecoming Day, November 20. It is an even ten years since I saw a game between the traditional foes. It will be worth my while to make the

New Faculty Members Announced

Professors—Mabel V. Campbell, home economics; Theo. H. Irion, education; Merrill I. Schnebly, law.

Assistant Professors—John C. Bour, law; Pearl Flowers, nursing; J. G. Heinberg, political science; Elmer Suger, history of art; Louise Trenholme, history and acting dean of women; William W. Whitlock, voice.

Instructors—Thomas A. Brady, history; B. B. Branstetter, field crops; Mary Brisley, rural sociology; Eugene Cowan, agricultural chemistry; Gustav Dippold, education; Nettie Doolittle, education; George R. Edwards, physical education; Pearl French, home nursing; Warren Gifford, dairy husbandry; Gordes Green, English; Ruth Hughey, English; W. H. Johnson, English; Howard L. Jolliff, piano; Walter Keller, geology; Mona Kelley, English; Howard Leech, high school education; Amy Leger, nursing; James Miller, education; Elsa Negel, Germanic languages; Louis Needles, anatomy; Ada Neidermeyer, rural sociology; Ralph Parks, engineering; Allen Reed, English; J. Willard Ridings, journalism; Anton Stankowski, physical education; Farris H. Woods, zoology; Thomas Yates, advertising; Geneva Young, voice.

Assistant instructors—Anna Betz, Germanic languages; Minnie Bozarth, industrial arts; Earl Garrison, dairy; Henry Holtzer, chemistry; John Matthews, dairy husbandry; Woodburn Ross, English; Leonard Stokes, voice; H. P. McCuiston, physician in public health service; Helen Woelfel, artist; Janet Baskett, biology.

Associate professors—Lewis Stadler, field crops; Edwin Stern, chemistry; May L. Klinger, home economics; Hannah Stillman, home economics.

Parker Furniture Company
welcomes these persons to
Columbia. Make our store
your furniture headquarters.

Parker
FURNITURE CO.

Barton Robnett

Tom McHarg

For the Freshest of
Flowers in Columbia
write, wire, or phone

Bernard's

The Florists

919 Broadway Phone 2121

**PROFESSIONAL
DIRECTORY**

VOLNEY McFADDEN
A.B. '13, LL. B. '14
Counselor at Law
277 Broadway
New York, N. Y.

ROSCOE E. HARPER, A.M., LL.B., '20
Attorney and Counsellor at Law,
1000-1007 Atlas Life Bldg.,
Tulsa, Oklahoma
Firm: Mason, Honnold,
Carter & Harper

E. Kemper Carter, C. E. '12
Albert R. Waters, C. E. '12
**The CARTER-WATERS
CORPORATION**

Materials of Construction
2049 Main Street, Kansas City, Mo.
Building and Paving Materials

JOHN S. HORNBACK, A. B. '16, LL. B. '18
Attorney and Counsellor at Law
700-706 Woodward Building
Washington, D. C.
Telephone, Main 8300
Practice Before Supreme Court of the
United States, Federal and State Courts
and all Government Departments.

Main 6533 Res. Eddy 8577
GROVER C. HOSFORD
Attorney and Counsellor at Law
721 Fidelity Mortgage Bldg.
Cleveland, Ohio

Main 0944 Res. Forest 3144
Equitable of New York
ERNEST STAUBE
Contracts Indemnifying for
Loss
to Persons and Property
Entire Fifth Floor Equitable Bldg.
St. Louis, Mo.
"See Me and Die Laughing"

4800 mile journey to Columbia to see the intrepid Tigers ruffle and deplume the Jay-hawks again. Will you be kind enough to make two reservations for me in the New Memorial Stadium? I would like to be seated with my colleague, Professor Paul F. Schowengerdt."

Charles H. (Spigot) Fawcett, B.S. in B.A. '17, A.T.O., Student Senate, member of the Cross Country teams of '13 and '14 and Captain the latter year, is a Steamship pilot on the Great Lakes. His home address is 411 Greenway Terrace, Kansas City, Mo.

Dr. William W. Knipmeyer, A.B. '17, Phi Beta Pi, is a Physician, Natchitoches, La.

Allen L. Owens, C.E. '17, Petroleum Geologist, Standard Oil Company of Venezuela, Maracaibo, Venezuela.



L. E. Durham, B.L. & LL.B. '99, General Counsel for Theodore Gary & Co., Telephone Building, Kansas City, writes, "I have had the benefit of three dollars several times over in reading the Alumnus."

Helen M. Richards, A.B. '17, who spent the summer in France, studying in the Fontainebleau School of Music, is an instructor in Violin at the North Carolina College for women, Greensboro. She taught violin in the Gulf Park College, Gulfport, Miss., last year.

Louis Seutter, B.S. in Eng. '17, general manager of Hubbard, Eldredge & Miller, Inc., manufacturers of seatings and novelty furniture, Rochester, N. Y., is the subject of a column of praise in a recent issue of the Grand Rapids, Mich., papers, where Mr. Seutter was formerly connected with furniture manufacturers.

Mrs. William D. Bower, formerly Margaret Moss, '18, writes from Peking, China, that they will move to Singapore the last of October. Mrs. Bower is a daughter of Mr. and Mrs. D. D. Moss, Ashland Gravel Road, Columbia. Mr. Bower is with the International Banking Corporation and has been in Peking for the past two years, but is now transferred to Singapore.

Miss Ruby J. Cline, B.S. in Ed. '18, who took graduate work at Columbia University last semester, is back as instructor in the women's department of Physical Education.

Olin Eugene Coon, B.S. in B. & P.A., '18, % J. C. Hoyt & Co., Insurance and Real Estate, Eldorado, Kans. He married Miss Grace Forbis, B.S. in Ed. '19, formerly of Columbia. They write, "We certainly enjoy

Bouquets to the Trade:

A bronze tablet will be placed in Waters Hall by the county agents of Missouri, as a memorial to the late Dr. H. J. Waters, former Dean of the College of Agriculture. The county agents deserve commendation for this. Let the alumni do more of this fine work.

Dean F. A. Middlebush, School of B. & P. A., and Mrs. Middlebush, attended the sessions of the League of Nations at Geneva, and the World Court at The Hague.

B. B. Branstetter has resigned as county agent of Clay Co., Mo., and has rejoined the faculty of the College of Agriculture.

Dean F. M. Tisdell of the College of Arts and Science, and Mrs. Tisdell, have returned from a trip to Europe.

Prof. A. F. Kuhlman has returned to the University Sociology Faculty after a year's leave of absence in research for the Missouri Association for criminal justice and Graduate work at the University of Chicago. Professor Kuhlman married Katherine Jones A.B. and B.S. in Ed. '16, Phi Beta Phi daughter of Dr. J. C. Jones. They have one daughter, Clara Ann, age 2, who maintains headquarters in her grandfather's office in Jesse Hall.

Dean J. P. McBaine has proposed something that must be done: purchase a cover for the football field, operated by electricity, keep the field dry and give spectators an exhibition on a dry field. The sooner this is done, the better.

The Missouri dairy judging team won seventh place in the dairy judging contest at Waterloo, Ia., on Sept. 27. Erwin C. Elting is coach. The members of the team are: Arthur Bennett, Chillicothe, James E. Comfort, St. Louis, Harold Lemar, Craig, and John H. Lucas, Kansas City. Comfort was high man in judging Ayrshires and Bennett ranked ninth in individual work.

The University Concert Series under the auspices of the School of Fine Arts, will present to the music lovers of this community, both town and gown, a series of musical attractions, in many ways superior to any that have been offered in the past. These attractions comprise:

Luella Melius, Coloratura Soprano; Rudolph Ganz, Pianist; Francis Macmillen, Violinist; The Minneapolis Symphony Orchestra, with Henri Verbrughen, Conductor, and Bernard Ferguson, Baritone Soloist.

An unusual feature of this season will be the appearance of the Kansas City Little Symphony Orchestra as a specially added attraction. Tickets for this attraction will be presented to the regular subscribers provided 700 season tickets are sold.

The climax of the musical season will be achieved in the performance of Handel's Messiah by the University Chorus, accompanied by the Minneapolis Symphony Orchestra. This Oratorio is one of the world's greatest masterpieces and is a perennial favorite wherever performed. The University Chorus is in better shape this year than it has ever been. There are approximately 175 carefully selected and enthusiastic singers who will present a program of Christmas Carols from many lands, at the Christmas Season, in addition to the Messiah mentioned above.

BERRY MCALESTER
for

**BOONE COUNTY
LUMBER CO.**

408-10 Broadway

Splendid Committees, All

Dr. Stratton D. Brooks, President of the University, has announced the following standing committees of the University faculty for 1926-27.

1. Accredited Schools and Colleges—Coursault, Elliff, Middlebush, C. A. Phillips, Quarles, Schlundt, Stephens, Tisdell.
2. Assembly Lectures—Hudson, Fairchild, Reese.
3. Discipline for Men—C. A. Phillips, Middlebush, M. P. Neal.
4. Discipline for Women—McKee, Dobbs, Lockwood.
5. Entrance—Neale, Purdom, Stephens.
6. Honorary Degrees—Pickard, Belden, Hibbard, McBaine, Mumford, Noyes, Robbins, W. Williams.
7. Public Exercises—Barclay, Canada, Eikenberry, Major, Wall.
8. Revision of Records—Haynes, Lanier, Talbert.
9. Rules—M. G. Neale.
10. Schedule of Studies and Examinations—Stephens, Gulick, Hyde, MacLeod, Martin, Neale, Parks, Shirky.
11. Statistics—Rubey, Capps, Hyde, Max F. Meyer, Westfall.
12. Student Activities—Purdom, Martin, Stewart, Miss McKee, Mrs. Trenholme.
13. University Policy—Selvidge, Coursault, Curtis, M. F. Miller, Parks.

Doubtless they all wear Millers Shoes!

George Helm

Frank Bihl

Alumni Patronize Alumnus Advertisers

the Alumnus. It enables us to find out about our friends and acquaintances."

June Findley, B.S. '13, M.S. '18, Assistant Prof. of Institutional Management, Ohio State University, Columbus.

L. L. St. Clair, B.S. in Ed. '19, is Principal of the Maryville (Mo.) High School.

J. R. (Fifty) Clouse, B.S. in Ag. '19, K. A., is teaching in the senior high school, Springfield, Mo.

Ralph Dodson, '19, Sigma Chi, Phi Delta Phi, Tomb & Key, is in the Insurance business, Bruce Dodson Bldg., 28th & Wyandotte, Kansas City.

Mrs. Edwin J. McKee, formerly Adalyn Faris, B.J. '19, of Excelsior Springs, Mo., writes, "I read the Alumnus from cover to cover."

Mrs. Max F. Meyer, formerly Stella Sexton, A.B. '19, A.M. '26, Phi Beta Kappa, Sigma Delta Pi, Alpha Zeta Pi, Alpha Gamma Delta, instructor in Spanish and French in Christian College. Her husband, Dr. Max F. Meyer, is Prof. of Psychology in the University. They have three daughters and two sons. The boys, Harold and Otto, are enrolled in the University and Mrs. Meyer's father, Millard P. Sexton, was a student from '76-'80.

Doyle W. Cotton, A.B. '20, Phi Delta Theta, General Supt. Production Dept., Champlin Refining Co., Enid, Okla.

Hopewell Daniel Fox, B.S. in Ag. '20, A.M. '22, Alpha Gamma Rho, Gamma Alpha, Gamma Sigma Delta, formerly instructor in Animal Husbandry here, is with the Doane Agricultural Service (D. H. Doane, B.S. in Ag. '08, M.S. '09), and is in charge of their work in representing the investment department of the Central States Life Insurance Company of St. Louis, and Manager of their Oklahoma property, at 340 E. Washington Avenue, McAlester.

Newton T. Gottschall, B.S. in Ed. '20, A.B. '21, Methodist missionary, Balai, Sumatra, E. Indies, arrived in New York on June 30. He arrived in Nevada, Mo., his old home, in August and since then has been traveling over the middlewest visiting his friends. He expects to be in Columbia in December. He has made several addresses since arriving in the U. S.

Bernhard Keiser, B.S. in Eng. '20, Alpha Xi, Epsilon, Chemical Engineer, 937 Pacific Ave., Webster Groves, Mo.

Prof. John N. Mueller, A.B. '20, A.M. '21, Phi Beta Kappa, Phi Delta Kappa, Phi Mu Alpha, Alpha Pi Zeta, formerly of the University Sociology Department, is now head of the Sociology Department, University of Oregon, Eugene. His brother, George, is now employed in the office of Secretary Cowan, and is a student in the University.

Clarence Mitchell Tucker, B.S. in Ag. '20, Sigma Phi Epsilon, former Plant Pathologist, Federal Experiment Station, Mayaguez, Porto Rico, and Mrs. Tucker, formerly Helen B. Jones, and their daughter, Jacqueline Lee, are living in Columbia. Mr. Tucker is an agricultural research scholar in Botany.

Walter Lee Gray, LL.B. '21, Phi Delta Phi, Lawyer, Fairfax, Okla.

Clark W. Jennings, A.B. '21, LL.B. '24, Phi Delta Phi, Phi Beta Kappa, and Mrs. Jennings, formerly Sybil Johnson, B.S. in Ed. '25, Gamma Phi Beta, who were married on September 2, last, are living at 112 N. Mill Street Orlando, Fla., where Mr. Jennings is an attorney in the McKinney-Rylander Bldg.

Lucile Meinhoffer, B.J. '21, Alpha Phi, Mortar Board, Theta Sigma Phi, is teaching in the Central Senior High School, Kansas City.

Anna McMurty, B.S. '21, is teaching Mathematics in the Carthage (Mo.) High School.

THINK!

of the

Sensible Rates

at the

Hotel Columbian Columbia, Mo.

Local Alumni:

Your Hallowe'en party, to be a success, must include Central Dairy ice cream.

We'll make up something special for you if you'll call.

We cater to the alumni. They make our advertising pay.

Order now for your Southern Methodist University party.

CENTRAL DAIRY

"Dot" Sappington and
Clyde L. (Brick) Shepard
Proprietors

"Mother May We Have More?"

HAIL MISSOURI'S GREAT GLEE CLUB!

Hail Dean Quarles and
Director Wall!

The season for the University Glee Club has started off in a most promising manner, and a Club that will far outstrip any that has represented the University seems assured.

Approximately 40 men from last year's club have returned, and the try-outs which were completed last week have discovered approximately 100 voices that are regarded as suitable prospective material for this year's club.

A fine program of attractive music has been provided, and the entire Club of some 140 singers is now actively at work preparing these numbers for public performance.

The members themselves approach their season with keenness and enthusiasm, and on every hand is heard expressions of determination to win the Valley Championship and make a clean sweep of the New York Contest as well.

The first public appearance of the Club will be a joint concert with the Club from the University of Kansas on the night of the Tiger-Jayhawk game. This will be one of the attractive features of the program for the dedication of the new stadium.

A request has also come in for a joint concert at Norman, with the Oklahoma Glee Club on the night of the annual football contest between the Tigers and the Sooners. This contest seems assured. Requests have also come from many towns in Southeast Missouri where club achieved distinctive success last year, for a repetition of the same tour. Many requests are also coming in from other cities and towns in Missouri for concerts by the Club.

The officers for this year are:

President.....Glenn Milburn
Vice President.....Howard Joyner
Secretary.....Lawrence Blair
Business Manager.....Bill Scannell
Assistant Business Manager.....
.....Lawrence Mitchell
Librarian.....Garnet Fowler

THE CO-OP

Charles E. Barkshire, Mgr.

H. D. Harmon, B.S. in Ag. '21, is assistant superintendent of the Blue Valley Creamery Co., 1110 Dewey, Bemidji, Minn. He married Miss Empe Allen of Mountain Grove, Mo., in 1920.

Harland F. Mayes, A.B. '21, M.A. Harvard '23, is now associate professor of Economics, State Teachers' College, Warrensburg, Mo. He is delighted with the Memorial Tower and the Memorial Stadium.

Miss Laurena Brown, A.B. '22, of 3229 Charlotte Street, Kansas City, an employee of the Board of Education there, was in an automobile accident on September 29. A sedan which she was driving turned over after a collision. There were four girls in the car with Miss Brown.

Harold J. Cosby, B.S. in Eng. '22, and Mrs. Cosby formerly Amy L. Kearney, '20-'22, of Steelville, Mo., have moved to Potosi, Mo. Mrs. Cosby was formerly secretary of the Crawford County Alumni Association and is actively interested in alumni activities.

Walter O. Essman, A.B. '22, a member of the University Sociology Faculty last year has resigned to go into business at his home, Bland, Missouri.

Robert E. Giles, who was enrolled in the engineering school and as of the class of '22, formerly of Albany, Mo., is in Fresno, Cal., 821 You Street, where he is taking treatment for pulmonary tuberculosis contracted in service during the war. It was because of this illness that he had to leave school and is now rated as totally and permanently disabled.

Grover Godwin, B.S. in Eng. '22, is in the Real Estate and Building business, 5243 Delmar Blvd., St. Louis. He married Dorothy Bergfeld of St. Louis, Mo., Jan. 28th last.

Wm. L. Horner, B.S. in Ag. '22, has been promoted from the Arkmo Lumber Yards, Wheatley, Ark., to the Arkmo Lumber Yards, Blytheville, Ark. He writes that he is pulling for another Tiger Valley Championship this year.

Mildred B. Long, A.B. '22, B.S. in Ed. '23, Phi Mu, is Supervisor of Art, Canford, N. J.

Dr. Forrest L. Martin, A.B. '22, A.M. '23, Alpha Kappa Kappa, Physician, 107 E. Spring, Eldorado Springs, Mo.

Mildred Benedict Northup, A.B. '22, Theta Mortar Board, is assistant professor of sociology, Hood College, Maryland.

W. J. Oonk, B.S. in Eng. '22, Engineer for Union Electric Light & Power Co., 315 N. 12th Blvd., St. Louis, Mo.

Edward Buxton Wilkinson, LL.B. '22, Lawyer, 718 Corby Bldg., St. Joseph, Mo.

John A. Ost, B.S. in B.A. '23, is an auditor, Singer Sewing Machine Co., 2238 Argyle, Chicago.

George W. Quick, former student in the University '23, now with the Santa Fe, Barstow, Cal., will enroll in the University at the beginning of next semester.

O. S. Randall, A.B. '23, Phi Beta Pi, will finish work at Johns Hopkins Medical School next June. He is president of Phi Beta Pi. His address is 429 N. Broadway, Baltimore, Md.

Mary Jane Stewart, B.S. in Ed. '23, Phi Beta Pi, B.S. '23, Columbia University, Boston School of Physical Education '15, is head of the physical training department Y.W.C.A., Honolulu, Hawaii. She previously taught physical training at the University of Porto Rico and two years at the University at Redland, Cal.

Arthur R. Weyth, B.J. '23, Sigma Delta Chi, QEBH, Phi Delta Theta, is in the pineapple raising business, Holeokala Ranch Co., Makawao, Mani, T. H., and farming on a large scale, using steam plows, over two hun-

ALUMNI NEWS NOTES

Twenty-one graduates and former students of the University of Missouri occupy positions on the faculty or executive offices at Stephens College. President James M. Wood is among these, having received his A.B. and B.S. in Education from the University in 1907.

Dr. J. J. Oppenheimer, dean of the faculty and professor of social sciences, received his B.S. in Education in 1915 and his A.M. degree in 1916. Although Dr. W. W. Charters, director of research, may not be counted as an alumnus of the University, he was dean of the School of Education from 1910 to 1917.

The faculty members who have received degrees from the University of Missouri are:

Miss Clara Patience Haggard, instructor in English Literature and associate dean, A.B. 1912; B.S. 1913; A. M. 1923.

Miss Alline Smith, instructor in high school and associate dean of women, A.B. 1923; summer student, 1926.

Miss Irene Barnes, instructor in Economics, student in 1924.

Mrs. Mary Asbury McKay, instructor in social science, B.S. 1907; A.M. 1923.

Mrs. Helen McGregor Cooledge, instructor in home economics, A.B. 1916.

Miss Dorothy Logan, instructor in home economics, B.S. 1923.

Miss Olivia Noel, instructor in piano and theory, A.B. 1924.

Miss Harriet D. Johnston, instructor in zoology, A.B. 1921; A.M. 1923.

Mrs. Helen Hayes Crawford, instructor in botany, A.M. 1924.

Miss Marioric Carpenter, instructor in Latin, A.B. and B.S. in Education, 1918; A.M. 1919.

Miss Eulalie Pape, instructor in romance languages, A.B. 1917; B.S. in Education, 1918; A.M. 1921.

Miss Geneva Drinkwater, professor of history and associate dean, A.B. 1917; B.S. in Education, 1917.

Miss Mary Winston Jones, instructor in secretarial work, A.B. 1922.

Miss Pearl Beauchamp, professor of Latin, A.B. 1918; B.S. in Education 1921.

Miss Virginia Lee Cole, instructor in English, B.J. 1925, A.M. 1926.

Miss Elizabeth Steckton, instructor in Spanish, B.S. in Education, 1918; A.M. 1925.

Miss Laura Anita Searcy, instructor in English Composition, A.B. 1904; A. M. 1913.

Mrs. Mary D. Lucas, instructor in voice, student, 1925-1926.

Fred D. Bruton, field secretary, is also among those having degrees from the University of Missouri. He received a B.S. in Education in 1912 and an A.M. in 1914. Gale H. Curtright, announcer and manager of KFRU, is now a student in the School of Engineering.

H. A. Doty

R. J. Foerster

Alumni Patronize
Alumnus Advertisers.

• NO •

I Am Busy

WHY do you say that when a life insurance agent calls on you?

It may be true, but why are you busy? It is largely because you wish to make the future secure for yourself and your family.

But the John Hancock agent wishes to do the same thing for you. He does not come to add to your troubles but to lessen them. He has for his commodity the security of your future.

Perhaps the next John Hancock agent who calls on you can answer some of your problems. He has the training and deals in policies to fit the needs of yourself and your business.

Why Not See Him?

John Hancock
LIFE INSURANCE COMPANY
OF BOSTON, MASSACHUSETTS

A STRONG COMPANY, Over Sixty Years
in Business. Liberal as to Contract,
Safe and Secure in Every Way.

dred men, tractors, and a fleet of seven trucks, and handling over 4500 tons of pineapple this year. They also have a purebred cattle ranch in conjunction. The place is situated at an altitude of 2100 feet on the side of a mountain. Art writes that he just heard from Owen Atkinson, whose stories have been appearing in "Brief Stories," relative to life on the Islands.

Alice Barnett, B.S. in Ed. '24, Kappa Alpha Theta, Glee Club, is teaching in St. Louis, address 6315 Waterman Ave.

Neil K. Barr, B.S. in Eng. '24, Electrical Engineer, 1330 Grand Ave., Kansas City, Mo.

Harold J. Brooks, B.S. in Ag. '24, received his M.S. degree at South Dakota State College, Brookings, last June, and on September 1 assumed duties as assistant instructor in Kansas State Agricultural College, Manhattan and special state inspector of dairy herds of the Kansas State institutions—address 1116 Bluemont Avenue, Manhattan. He was formerly employed as Dairy Chemist at Bryers' Factory, Philadelphia.

Fern I. Brooks, B.S. in Ed. '23, has accepted a position as instructor of Home Economics and English in Ottumwa (Ia.) High School, her home town. For the past three years she has been an instructor of Vocational Home Economics in Chillicothe (Mo.) High School. They are going to attend the Homecoming exercises on November 20.

Mrs. Frank Cook, formerly Amelia Foster, B.J. '24, of 915 Olive St., Shreveport, La., chaperoned a party of Stephens College girls of Shreveport to Columbia during the week of enrollment.

French L. Dickey, B.S. in B. & P.A. '24, Sigma Chi, Alpha Kappa Psi, Chi Chi Chi, General Insurance, 340 New York Life Bldg., Kansas City, Mo.

Walter B. Elwood, A.B. '24, son of Dr. C. A. Elwood in charge of the Sociology department of the University, is doing graduate work in Physics at Columbia University, 927 Furnald Hall, New York City. He has received his M.A. degree in Physics at Columbia University.

Benjamin Fisher, E.E. '24, who has been employed as a student engineer in the Testing Department of the General Electric Company, has taken a position as an instructor in the South Dakota State College at Brookings, S. D.

J. P. Foltz, B.S. in Eng. '24, B.S. in E.E. '25, is with the Westinghouse Company at E. Pittsburgh, Pa.

J. Cedric Webb, B.S. in Ag. '24, is teaching vocational agriculture in the Licking (Mo.) High School. He married Miss Lulu Randall, a former student, on June 29.

Albert Richard Lee Compton, A.B. '25, of Marionville, Mo., is enrolled in the Harvard School of Commerce this year.

Henry Depping, student president '25, is on leave of absence from his office in Jefferson City and is at Republican headquarters, 5th Floor, Title Guaranty Building, 7th & Chestnut, St. Louis, where he will be until after the election this fall. He is staying at the American Hotel.

Don Faurot, B.S. in Ag. '25, Farm House, Mystical Seven, fullback on the football teams of '24 and '25, on the basketball team '22-'24, Captain the latter year, and a member of the baseball team of '23 and '24, is Athletic Director, Kirksville (Mo.) State Teachers College.

Dorothy Belle Flanagan, B.J. '25, Theta Alpha Phi, Tri Delta, Mortar Board, is feature writer and reporter on the Olean, (N. Y.) Herald. Her sister is woman's editor of the New Bedford Times, and Charles Farnum, is a reporter on the New Bedford Standard. She writes that Johnnie Lou Lake, is now Mrs. Byron Billingsly, 49th & Troost, Kansas

HERE IS REAL STUDENT NEWS!

Elzea Johnson, Carthage, has been elected President of the law students. The other officers are: Glenn Clark, Vice-President, Salem; Don Williams, Secretary-Treasurer, Maryville; Owen George, Junior senator, Sheridan; and George Hollis, cheer leader, Columbia.

Jean Paul Bradshaw, student president, has appointed Ted O'Sullivan, football player and basketball captain, and John W. McCune, president of the Engineering Student body, members of the athletic committee.

William J. (Bill) Scannell Kappa Sig, St. Louis, brother of Bob Scannell, football player, has been elected head cheer leader for this year. Lawrence Brill of Sedalia, brother of Glenn Brill, was elected assistant cheer leader.

James Forsee, A.B. '26, secretary-treasurer of the summer class of 1926, has been elected President of the Student Body of the School of Medicine for this year. The other officers are: Vice-President, Vaughn C. Price, Dawn, Mo. Secretary-Treasurer, Lewis Howe, Webster Groves and Homer Dameron, Student Senate, Silex.

John W. McCune, Laddonia, Mo., is president of the Engineers Club. The other officers are: Gale Curtright, Columbia, vice-president; Earl M. Peak, Emporia, Kan., Secretary; David H. Cunningham, Columbia, Treasurer, and William A. Gum, Clarktown, President of St. Pat's Board.

Don Reynolds, president of the Student Senate and business manager of the 1926 Savitar, is President of the Journalism Student Body. The other officers are: Raymond J. Miller, Vice-President; Virginia Wood, secretary-treasurer.

Victor - Barth Clothing Co.

I. A. BARTH
Ninth and Broadway

Alumni Patronize
Alumnus Advertisers

The Boone County Mill

One of Columbia's Oldest
Institutions

Makes the best of flour for fraternities, sororities, and boarding houses. The Ag alumni and former students cooperate with us. We support alumni and University activities.

The Boone County Milling Company

JOE L. LYNES, *President*

ALUMNI GARAGE SERVICE

For the football season we are making special arrangements to care for the cars of Alumni who motor to Columbia for the football season.

We cater to alumni.

A hundred or more Alumni were with us during the summer.

When you come to our place, tell us who you are.

The Missouri Motor Co.

Jack Taylor's Place
"Heavy" Thomas Assisting

ALUMNI MOTORIST
HEADQUARTERS

City.—Berenice Cutler, workshop star, has been playing leads all summer with a dramatic organization at the University of Washington in Seattle.—Don Robertson has been at Woods Hole all summer, working on a thesis at the Marine Biological Laboratory. Dorothy Belle adds, "I just eat up the Alumnus when it arrives."

Virginia Graves, B.S. in Ed '25, is teaching Health Education in Tulsa, Okla., schools.

Carl C. Greim, B.S. in Eng. '25, Eta Kappa Nu, is District engineer, Empire District Electric Co., Joplin, Mo. He accompanied a party of seven to the Tulane game.

Mona J. Kelley, A.B. '25, A.M. '26, is an English instructor in the University.

Charles Harold (Pat) Leslie, A.B. '25, is a student in the Washington University Medical School, St. Louis. His brother John received a degree in engineering in the University and his sister Leta was enrolled in the University one year. Mr. Leslie's address is Alpha Kappa House, 4948 Forest Park Boulevard, Saint Louis, Mo.

J. Harold Long, B.S. in Ag. '25, Alpha Gamma Sigma, Wellsville, Mo.

Margaret Madorie, A.B. '25, Gamma Phi Beta, 2611 Gillham Rd., Kansas City, Mo., writes, "I enjoy the Alumnus very much and certainly could not do without it."

Martha Ruth Mayo, B.S. in Ed. '25, Gamma Sigma Delta, the first woman to be awarded the James S. Rollins Junior Scholarship, College of Agriculture, is Home Demonstration Agent for Arkansas County, 310 Federal Bank and Trust Bldg., Little Rock. She was recently awarded the prize for bringing the greatest number of women and girls to the Arkansas College of Agriculture during the annual Farmers' Week.

Miss Flsie Proctor, A.B. '25, Phi Beta Kappa, Alpha Delta Pi, is teaching French in Montemare, (for girls), at Lake Placid, N. Y. The first semester of this school is held in Lake Placid, and the second semester at Miami Beach, Fla. Miss Proctor and her mother spent the summer in Europe.

Herbert W. Reuzer, B.S. in Ag. '25, Alpha Zeta, Alpha Gamma Sigma, is Research Specialist in Agronomy at the New Jersey Agr. Expt. Station where he is doing graduate work. His address, Alumni House, New Brunswick, New Jersey. His home is in Jamestown, Mo.

Mrs. Marian A. Wade, B.S. in Ag. '25, is living at 339 N. 11th, Lincoln, Nebr., where she is teaching Home Economics in the Junior High School.

Miss Sara Ann Allen, B.J. '26, is a reporter on the Independence (Mo) Examiner, address 423 N. Delaware Street.

Dorothy Bradfield, B.S. in Ed. '26, Alpha Chi Epsilon, Home Economics Supervisor, 712 S. Center St., Franklin, Ohio.

Leland Byars, LL.B. '26, Phi Alpha Delta, is a Lawyer, 517 Guitard Bldg., Columbia.

Gerald M. Carney, B.S. in Ed. '26, Phi Delta Kappa, Phi Mu Alpha, teacher of instrumental music, Marshalltown Senior High, Iowa.

Ralph Bronson Cowan, B.J. '26, in the advertising department of the Toronto Star, has changed his address to 29 Isabella Street, Toronto, Canada. He was awarded the John W. Jewell Scholarship in 1925.

Luther Crookshank, M.A. '26, is Supt. of Schools, Brookfield, Mo.

C. N. Davis, B.S. in Ag. '26, is delivering the entomology lectures this year in the place of K. C. Sullivan, A.B. & M.A. '15, who is on leave of absence, doing graduate work at Cornell University.



Send your
Engraving
Work
to

BURGER ENGRAVING COMPANY

ARTISTS
DESIGNERS
PHOTO ENGRAVERS

8th and Wyandotte

KANSAS CITY, MISSOURI

"Burger
Illustrations
build
Business!"



BEN F. SEWARD
'14
PRESIDENT

IF

It is a Book

YOU

Want,

Try

Missouri
Store

Columbia, Mo.

Write for Our 1926 Catalogs

Frederick J. (Fritz) Culver, B.S. in Eng. '26, is now with the Empire Gas & Fuel Co., Eldorado, Kan.

Burke Gilliam, B.J. '26, is enrolled at Southern Methodist University, Dallas, this year and doing work for the All-Church Press, 711 Insurance Building.

Minta E. Jacobs, B.S. in Ed. '26, 1838 E. 101st Street, Cleveland, O.

Robert W. Jacobs, B.J. '26, 14 N. Oakes, San Angelo, Tex.

Harvey I. McCoy, LL.B. '26, Kappa Alpha, Phi Delta Phi, is an Attorney, 415 Himmelberger-Harrison Bldg., Cape Girardeau, Mo. He is associated with Russell L. Dearmont, LL.B. '14.

John W. McCune, '26, of Laddonia, Missouri, has been elected President of the Engineers club to succeed Arthur Maurer who did not return to school.

Alma Moore, B.J. '26, Pi Beta Phi, Gamma Alpha Chi, Excelsior Springs, Mo.

Clifford D. Van Dyne, A.B. '17, Beta, right tackle on the football teams of '14-'15 and '16, vice-president and general manager, American Disinfecting Co., Sedalia, visited the University in September, and spent much time with his old friend, Stan-kowski, freshman coach. Cliff married Virginia H. Dingess of Atchison, Kan., in 1920. They have two sons, prospective tackles. Mr. Van Dyne is a brother of Chas. M. Van Dyne, who played right tackle on the teams of '22, '23 and '24.

Joseph L. Weiner, LL.B. & A.B. '21, Phi Alpha Delta, and Mrs. Wiener, formerly Margaret Milton, A.B. & B.J. '24, 6301 Cates Avenue, St. Louis.

Coulton M. Becker, B.S. in C.E. '10, of Williamsville, Mo., former representative in the Missouri Legislature from Wayne County, and his wife, formerly Miss Grace Dulaney, '12, and their three children—twin boys—and daughter, visited the University on September 20.

James Robert Yeager, B.S. in Eng. '21, Ch.E in '23, is a chemist with Hercules Powder Co., Parlin, N. Y.

Dr. A. J. Campbell, M.D. '04, 510 S. Ohio Street, President of the Pettis County Alumni Association, Sedalia, visited the University on September 17 and with his niece, Miss Irene Burress, a student in the University, motored to Chicago.

The man who was formerly night watchman in Jesse Hall has been made traffic officer, a la blue coat, and a few brass buttons, to regulate traffic on the south side of Jesse Hall. Dr. Campbell came in from a small country town like Sedalia and just had to violate the traffic regulations in the rear of old academic hall. Pronto, traffic cop stopped Dr. Campbell at the office of the Alumni Recorder, and made him go back and park his car properly, much to the embarrassment and discomfort of Dr. Campbell, for the temperature was close to one hundred.

American and Annex Hotels

(Absolutely Fireproof)

7th & Market, 6th & Market
ST. LOUIS, MISSOURI

On direct car line with the Union Station and surrounded by all the leading places of amusement.

500 rooms with all the conveniences of a home. Bath (tub or shower) in every room. Running ice water. Telephone. In fact, everything to make you comfortable and feel at home.

Our "nation-famed" cooking at reasonable prices will attract you to our cafe.

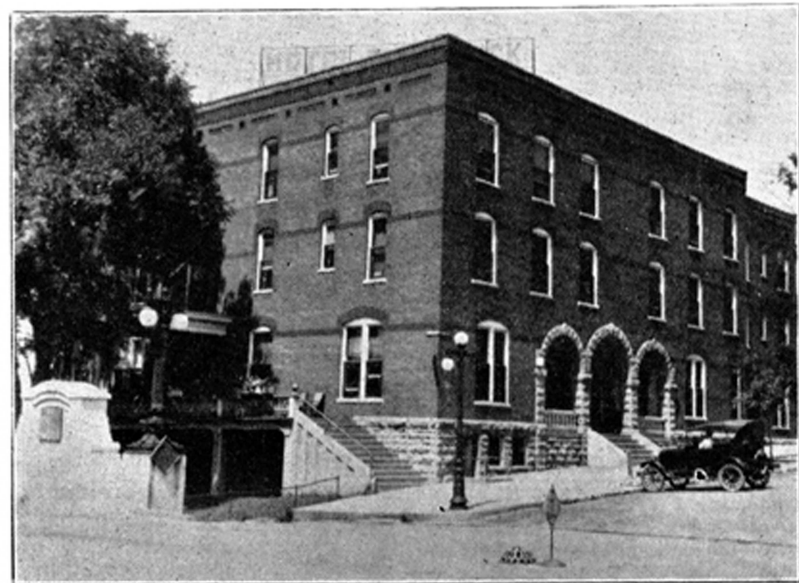
E. Berkley Martin, Manager.

Memorial Tower

Home Economics Building and the addition to same, now under construction, the new University Hospital, Methodist Girls' Dormitory, Boone County National Bank Building and many others are "Simon Built."

Simon Construction Company

314-18 Guitar Building
Columbia, Missouri



Hotel Frederick

Boonville, Missouri

One of the best Hotels in Missouri, managed by Guy C. Million, and his assistant, E. A. Williams—two fine, genial men, who strive to please their patrons.

Their Hotel is at the west end of the bridge on number 2 or 40 and on number 5 Highways—right on the river where it is always cool and pleasant. THE FREDERICK is noted for its good food and is one of the most popular Hotels in the State.

Hundreds of alumni and former students will drive to Columbia this fall and winter for the football and basketball games. HOTEL FREDERICK in Boonville is an excellent place to stay the night before and the night after the football and basketball games. Drive over to Columbia on the morning of the game, after a good night's rest in Boonville and drive back to Boonville right after the game and spend the night, preparatory for the trip home. Write, wire, or call Guy Million for reservations.

Hotel Frederick

Boonville, Mo.

James H. (Sunny Jim) Barnes, B.S. in E.E. '06, representative of the General Electric Co., Moberly, Mo., and President of the Randolph County Alumni Association. Dr. Pickard addresses Mr. Barnes as "Moberly."

Ernest Robert Bayley, B.J. '16, Minister, Henrietta, Mo., and Mrs. Bayley, formerly Alice J. Perry. They attended the Methodist Conference.

Allen Bliss Wilder, M.E. '12, Phi Kappa Psi, fullback on the teams of '09-'11, and a member of the track teams of '08-'11, and his brother, Wentworth, A.B. and M.E. '17. Allen is President of the Wilder National Tavern System and Wentworth is secretary-treasurer of the Wilder Manufacturing Co., St. Louis.

John G. (Jack) Crawford, A.B. '22, Jack McLaughlin, '21-'24, of Sedalia, Paul Owen, '19-'20, of Kansas City, Bill Tweedie, '19-'22, of Jefferson City, and Kenneth Hagerman of St. Louis.

D. H. Doane, B.S. in Ag. '19, Alpha Zeta, Doane Agricultural Service, and O. S. Conrades, B.S. in Ag. '17, Vice-President of the St. Louis Material & Supply Co., 314 N. 4th Street, St. Louis.

James Marvin Douglass, B.S. in Ag. '14, and Mrs. Douglass, of Marshalltown, Ia., and her sister, Miss Vera Bassett of Washington, D. C., visited the University in September.

Meta T. Eitzen, B.S. '00, A.M. '07, is teaching in Beaumont High School, St. Louis, Mo. She visited her mother and sisters in Columbia during the summer.

W. F. (Bill) Etz, B.S. in Ag. '21, Wilson & Co., Chicago. He assisted his brother in entering.

Judge James E. Goodrich, A.B. '92, LL.B. '93, and Mrs. Goodrich, of Kansas City.

Alice Furtney, A.B. '17, B.S. in Ed. '19, who is teaching in the Bridgeport (Conn.) High School.

Fern Ballinger Gale, A.B. '11, who is doing secretarial work, Associated Oil Co., 79 New Montgomery Street, San Francisco, visited the University in September and was the guest of Prof. and Mrs. T. J. Talbert.

Florien P. Gass, A.B. '23, QEBH, Alpha Pi Zeta, Pi Mu Epsilon, Sigma Upsilon, Rhodes Scholar, on his way back to England after several weeks in Kansas City with his parents.

H. K. Hanna, Jr., B.S. in Ag. '24, assistant sales manager, Beef Cutting Dept., Swift & Co., Kansas City, and Mrs. Hanna, formerly Mary Todd Gentry, B.S. in Ag. '26, Pi Phi, Mortar Board, Barnwarming Queen, Secretary-Treasurer Student Body.

ALUMNI MOTORISTS:

Where will you park your car when you drive to the football games this fall?

We are equipped to park your car at our reasonable rates.

The Woods Service Station

13-15 S. Eighth St., just south or back of the Boone Co. Nat'l. Bank, owned by an alumnus, Lee A. (Penny) Woods, '07. Operated by G. Y. (Go Yonder) Ecton. Write or wire him for parking reservation for the entire football season.

Mrs. Donald C. Fitch, A.B. '16, Pi Phi, formerly Helen Robnett of Columbia, now of 933 S. Main Street, Independence, Mo.

Alfonso Johnson, B.J. '22, Acacia, Alpha Delta Sigma, Kappa Tau Alpha, business manager of the Dallas News, on his way from Chicago to Dallas—attended Columbia Rotary Club, of which he was a charter member, visited with his old friends on the campus, attended to a lot of matters pertaining to the entertainment of S. M. U. football team, when they come to Columbia on October 16.

Robert E. Johnson, B.S. in Eng. '25, on his way to New York City, where he will be in the Budget Department, Henry L. Doherty & Co., 600 Wall Street. Since leaving school he spent a year in Denver and three months in Kansas City.

Edward Seward Jones, LL.B. '05, Attorney, Macon, Mo., visited the University on September 14. He was formerly Superintendent of Schools at Bevier, City Attorney and Prosecuting Attorney at Macon County from 1901-13. When in school Mr. Jones was on the debating team and won Karnes medal in 1905. He married Harriet E. Johnson a former student of the University in 1907, of Warrensburg, Mo., in 1909. They have one son Robert T. 16 and two daughters Marjorie 6 and Winnifred 12. He writes; "I have really been a little neglectful of the University, but in the practice of law and in the business of rearing a family, a man has many things to think about except his own personal affairs.

"I have suddenly awakened to the fact, however, that I have a son who is a Junior in High School, a daughter who is a Freshman in High School, and a still younger daughter who is crowding close on them; all of whom are possible candidates for enrollment in the Missouri University.

"So, I expect I am performing a patriotic duty in trying to revive old associations."

Make
your
money
feel
at
home.

The Boone County Trust Company

"Built by Safe Investment"

GLUE-LOCKED
GLUE-LOCKED—REG. U.S. PAT. OFF.

Improved Correspondence Envelopes At No Greater Cost

Wider Gumming close to the corners—seals easily and stays sealed—Wider Flap increases capacity

Compare this with your own envelopes

THE OLD WAY

BERKOWITZ ENVELOPE CO.
KANSAS CITY, MO.

Football

is the Tigers' game—but

Quality Printing and Binding

is our game

Remember

E. W. STEPHENS PUBLISHING CO.

Where Hitt Hits Broadway

Columbia, Mo.

BUSY BEE CANDIES

"H-O-L-D T-H-A-T L-I-N-E"

the crowd yells as the Tigers battle against their husky opponents—and mingled with a thousand cheers is one special "voice" at your side. Better "hold that line" with her, too,

or the other fellow may make a "touch-down." Why not reinforce your position with a box of Busy Bee Candy sent regularly? And remember—if she lives out of town—*We ship everywhere.*

417 N. Seventh Street

THE BUSY BEE

St. Louis, Mo.

Percy Napton, LL.B. 1900, Phi Delta Theta, Attorney, Woodland, Calif.

Sylvanus Carl Shipley, B.S. in Arts 1900, is teaching and acting Dean of Mechanical Engineering, University of Minnesota.

John Kramer, LL.B. '00, is an attorney, 345 New York Life Bldg., Kansas City, Mo.

Wm. C. Lucas, A.B. 1900, LL.B. '01, E.A.E., Phi Delta Phi, QEBH, is an attorney, 312 Keith Bldg., Kansas City, Mo.

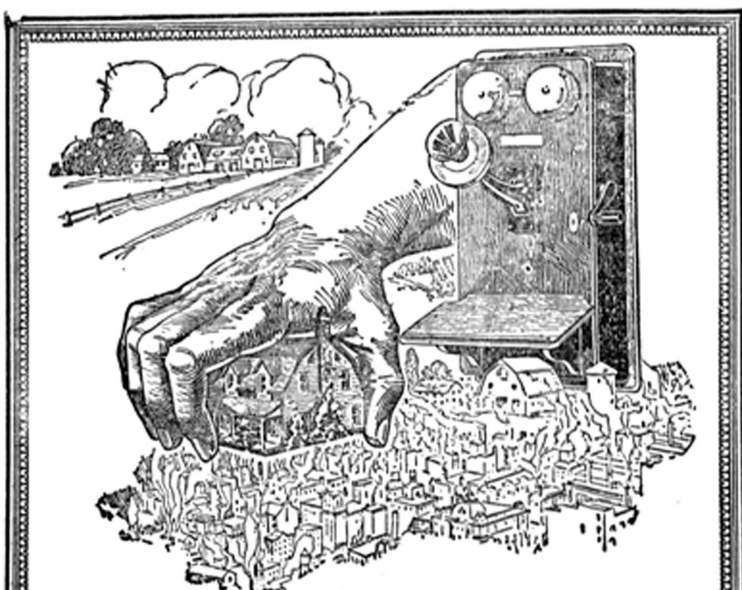
C. A. (Todd) Jenkins, A.B. '01, Beta Theta Pi and QEBH and on the football teams of '98-'99-'00, is in the General Insurance business 210½ Ohio St., Sedalia, Mo. He is President of the Missouri Association of Insurance Agents. Todd married Miss Frances Lydick of Sedalia in 1910. They have three sons all University prospects.

Eugene W. Nelson, LL.B. '00, Attorney of Hannibal, Mo., formerly Prosecuting Attorney of Marion County for four terms, is a Marion County nominee for the Missouri Legislature, House of Representatives. He married Miss Ethel J. Goodrich in 1905. They have one son, Gail E. and one daughter, Helen E.

Forest S. Lyman, B.S. in E.E. '00, E.E. '03, Kappa Sigma, Tau Beta Pi,

QEBH, 195 Broadway, New York, writes: "I marvel at the progress being made on the Memorial Tower and the Memorial Stadium and I am looking forward to this fall when I may see

these wonderful projects dedicated on November 20. Why not give us a picture of the new Wabash station at Centralia so the shock won't be fatal when we see it this fall?"



"Long Distance" Brings the Farmer to Town

TODAY nothing is too good for the farmer. The telephone brings his farm to town and he may order whatever he wishes from his favorite dealer.

Within the same convenient radius of your store are scores of thrifty housewives who would be pleased to have you solicit their trade by Long Distance.

Even if a sale does not result you have advertised your business in a very effective way. They will probably call on your store the next time they come to town. It's human nature.

Turn your telephone into a salesman and keep it busy. Many other merchants are selling by telephone successfully.

**Columbia
Telephone Company**

We Back Missouri!

Our resources and services are always at the disposal of any University student. Alumni are always welcome when in town.

**Boone County
National Bank**

Columbia, Mo.

Chas. Desmond Matthews, B.S. in Ag. '14. Delta Theta Sigma, Sigma Xi, State Horticulturist, of Raleigh, N. C.

Sterling F. Lipscomb, '08-'12, Fertilizer Manufacturer, and Fruit grower, Bartow, Fla., and Mrs. Lipscomb,

formerly Cora Martin, of Savannah, Ga., and their daughter, Ann Robinson.

Miss Lois Luckhart, B.S. in Ed. '26, Tarkio, Mo., is teaching kindergarten in Kansas City. She visited Miss Alceene Smith, A.B. '23, of Stephens College.

Dr. Ellsworth E. Moody, A.B. '12, M.D. Washington University, A.M. Harvard, 307 Frisco Bldg., Joplin, Mo.

G. H. Moore, LL.B. '01, LL.M. '02, Attorney, Boatman's Bank Bldg., St. Louis, visited his mother, Mrs. W. P. Moore.

Ernest F. Thiemeyer, '19-'22, Phi Kappa Psi, St. Louis.

Anna K. Lash, A.B. & B.S. '06, address 4110 Warwick Blvd., Kansas City, Mo.

J. N. Crocker, B.S. in Ed. '20, Sedalia.

Helen Bingham, AB. '22, 3734 Roanoke, Kansas City.

George B. Berry, A.B. '24, Kansas City.

B. T. Galloway, A.B. and B.S. '84, LL.D. '02, is with the United States Department of Agriculture, Washington, D. C.

D. H. Eby, LL.B. '74, is an Attorney, 504 Hannibal Trust Co., Bldg., Hannibal, Mo.

Robert Milton Cook, B.S. '82, is a Banker, 1319 Grand Ave., Kansas City, Mo.

Gilbert P. Moore, A.B. '18, A.M. '20, Standard Oil Co., Buenos Aires, Argentina, and Mrs. Moore, formerly Sadie Mae Lee, visited Mr. Moore's mother, Mrs. F. E. Moore.

G. C. Haydon, B.S. in Eng. '84, who has been in the U. S. Engineer's office, War Department, Chattanooga, Tenn., has been returned to the Kansas City U. S. Engineers District, as principal assistant engineer on river improvements in the district with station at the U. S. Engineer's office, 707 Postal Telegraph Bldg., Kansas City.

PAUL PARSONS

A name that stands for quality in photography. That's why students and townspeople have their work done at PARSONS.

Alumni and Former Students

When You Return to

Columbia—

Phone

491 Taxi

The Old Reliable

Ten Years of Success

17-Passenger Bus

for party calls

STATION KFRU BROADCASTING From STEPHENS COLLEGE Columbia, Missouri

A RIDING ACADEMY is one of the new features at Stephens this year. Any girl having obtained her parents' permission is eligible for membership.

THE BARBECUE, an annual celebration, is being planned. The new girls are looking forward to their first Barbecue at Stephens, for they have heard that they will have an "old fashioned" good time.

Last week we invited you to visit us. Again we extend that invitation.

Station KFRU Signing Off

Dodge
Brothers
Motor
Cars

Graham
Brothers
Trucks

Brunswick
Tires

JOHN N. TAYLOR
Columbia, Mo.

THE TIGERS

are hot on the trail of another Football Championship.

Keep up with them by using RED HAT GASOLINE.

Our comfort station is approved by the State Board of Health. Our Bureau of Information is 100% reliable.

Alumni Motorist Headquarters

Alumni Management Student
Labor

Red Hat Service Station

Broadway and College Ave.

A. M. Cowan, B.S. Agr. '20, Mgr.

Andrew K. Bushman, B.S. in E.E. '12, Tau Beta Pi, is with General Electric Co., 230 S. Clark, Chicago.

Charles A. Calvird, Jr., LL. B. '12, Phi Delta Theta, Attorney, Clinton, Mo.

Carl Herbert Crawford, Ag. and Grad. '12, Farmer, Atlanta, Mo.

Morrill DeReign, LL. B. '12, is an Attorney, Caruthersville, Mo. He married Miss Anna Lucille Shepard, a former student. They have two children.

Harry David Hancock, B.S. in E.E. '12, Tau Beta Pi, Engineer, 601 Dwight Bldg., Kansas City, Mo.

Leslie Benjamin Hohamn, A.B. '12, Physician, Johns Hopkins Hospital, Baltimore, Md.

John McKinley Jones, A.M. '12, Chief Division Range, Animal Husbandry, Texas Experiment Station, College Station.

E. J. Deal, former student '09-'12, and Mrs. Deal formerly Miss Martha Troxell, A.B. '12, B.S. '13, Alpha Tau Omega, and children Jerry, George, and Frances, of Charleston, Mo., visited Mrs. Troxell's parents and Frances attended the University Elementary School this summer.

Walter Lawrence Prehn, B.S. in E.E. '12, formerly in the St. Louis office of the Southwestern Bell Telephone Company, has been promoted to the office of General Manager of that company for Texas with headquarters in Dallas.

Harry E. Ridings, B.J. '12, is an Automobile Dealer, Ridings-Baldwin Cadillac Co., Wichita, Kan. Mr. Ridings married Miss Ora Lee George, '10. They have two children.

Dudley Sanford, A.B. '12, Phi Beta Kappa, Sigma Xi, Kappa Sigma, is treasurer of the St. Louis County Gas Co., Webster Groves, Mo.

Fleetwood Bell, LL.B. '97, is a retired banker and orange grower, 2014 Bush, Santa Ana, Cal. Mr. Bell married Miss Ella May Wagner, '05. They have six children.

Morton M. Prentis, A.B. '06, Sigma Alpha Epsilon, Theta Nu Epsilon, is president of Merchants Nat'l. Bank, Baltimore, Md. His brother, Hanning Webb Prentis, Jr., A.B. '03, Phi Beta Kappa, Sigma Alpha Epsilon, is Vice-Pres. and General Manager, Armstrong Cork Co., Linoleum Division, Lancaster, Pa. He has several Alumni in his employ.

Sheldon E. Davis, B.S. in Ed. '07, A.B. '08, A.M. '09, Phi Beta Kappa, President of Montana State Normal College, Dillon.

Ernest Horn, B.S. '07, A.M. '08, Phi Delta Kappa, is teaching at State University of Iowa, Iowa City.

Edward E. Kite, LL. B. '07, Attorney, St. Francis, Kan.

Walter C. Logan, B.S. in C.E. '07, Phi Delta Theta, QEBH, is with International Shoe Co., Hannibal, Mo.

S. Clay Baker, B.S. in C.E. '08, Engineer, No. 7 Collinsville Ave., East St. Louis, Ill.

Wm. Lloyd Driver, A.B. '09, Director of Athletics, University of California, Davis, Calif., and Mrs. Driver came to Columbia from a visit with Mr. Driver's brother, Charles E., B.S.



in Ag. '13. This was the first time that Lloyd had been in Columbia since 1912. He marvelled at the many changes and at the beauty of the Memorial Tower and Memorial Stadium. The accompanying photo shows Lloyd with his annual deer, taken on a hunt after his trip to Columbia.

Joe H. French, A.B. '10, Kappa Sigma, Mystical Seven, is Sales Manager, Horst & Wilkinson, Inc., 415 W. Third Street, Davenport, Ia. He writes, "I surely do get a good deal of enjoyment reading the *Alumnus*."

George C. Gundlach, B.S. in C.E. '10, is a Civil Engineer, 300 City Hall, St. Louis. He was a member of the baseball teams of '07-'08 and '09 and Ass't. Baseball Coach in '10. He married Jessie M. Sherman, '07-'10, in 1910. They have two sons and one daughter.

W. J. Osborn, B.S. in Ed. '10, Director of Educational Measurements, Wisconsin Department of Public Instruction, Madison.

F. C. Hilder, B.S. in C.E. '04, C.E. '07, is with Bureau of Construction and Repair, Navy Dept., Washington, D. C.

Chas. C. Robinson, B.S. in E.E. '04, is Supt. Electric Power Plants—Union Electric Light and Power Co., St. Louis, Mo.

Ella A. Busch Chase, A.B. '02, A.M. '04, Kappa Kappa Gamma, is teacher of Spanish, George Washington High School, N. Y. City.

Roy Carl Gans, B.S. in C.E. '01, Tau Beta Pi, Civil Engineer, Room 324, City Hall, St. Louis, Mo.

Dr. Henry H. Rutherford, A.B. '96, M.D. '98, Sigma Nu, is Medical Officer, U. S. Army, Corps Area Surgeon's Office, Ft. Sam Houston, Tex.

Wallie A. Hurwig, A.B., B.S. in Ed. A.M. '06, Phi Beta Kappa, Sigma Xi, is Professor of Mathematics, Cornell University, N. Y.

Charles Parmer, M.D. '98, is a physician, Centralia, Mo.

Antone E. Russell, A.B. '98, LL.B. '00, Beta Theta Pi, Phi Delta Phi, QEBH, Attorney, 533 Exchange Bank Bldg., Spokane, Wash.

Thomas J. Wilkerson, C.E. '90, is a Consulting Engineer, P. O. Box 222, Beaver Falls, Pa.

Dr. C. L. Parkhurst, B.S. '91, M.D. '01, is a physician and surgeon, Houstonia, Mo. Mr. Parkhurst married Miss Caldwell, A.B. '02. They have four boys and one girl, the latter a University student.

Geo. R. Dodson, A.B. '87, is Minister of Church of The Unity, and Prof. of Philosophy, Washington University, 5015 Waterman Ave., St. Louis.

Elmer H. (Red) Kershaw, B.S. in Ag. '23, Kappa Sigma, Alpha Zeta, member of the 1921 track team, famous football player of '21-'22 known in those days as "Spark Plug" is assistant coach and a member of the faculty of the Lake Forest College, Lake Forest, Ill. He and his wife, formerly Ruth Dixon, visited the University late in August.

Dean W. Richards, B.S. in E.E. '05, teacher of mathematics and physics, Platteville, Wis.

J. Max (Shorty) McCann, B.S. in Eng. '22, Kappa Sigma, Student President '21-'22, has been promoted to acting construction engineer, Division 9, Missouri State Highway Commission at Willow Springs, Mo.

C. B. Appleman, former student '95, Skidmore, Mo., the first time in thirty years.

Elizabeth Agee, B.J. '23, A.B. '24, visited her mother, Mrs. Emma Agee. Miss Agee is publicity director of the Tuberculosis Society in St. Louis.

John Alspaugh, '12 and his wife, formerly Miss Minnie Jordan, '11, of Keytesville, Mo., visited her parents, Mr. and Mrs. S. M. Jordan.

O. K. Armstrong, B.J. '25, of the Department of Journalism, University of Florida, Gainesville. Mr. Armstrong states that in the first year of his department there were 150 students enrolled.

R. A. Beekman, B.S. in E.E. '10, Marine Dept., General Electric, Schenectady, N.Y.

F. Ashley Benson, Jr., A.B. '25, and Mrs. Benson, formerly Elizabeth Meriwether, '21-'24, Kansas City.

Ross M. Bickley, engineering '01, Mechanical Engineer, 52 Water Street, Pittsburgh, Pa., and his wife, formerly Julia M. Cauthorn, and their two sons. Mr. Bickley conferred with the alumni office relative to plans for an alumni meeting in Pittsburgh the night before the Missouri-West Virginia football game.

Dr. Gerald Frederick Breckenridge B.S. in Eng. '18, C.E. '21 Professor of Chemistry at Park College, Parkhill, Missouri, who has been teaching in the University of California for the last two years visited the University in August.

Carl Eugene Bolte, A.B. '23, U. L. B. Sect., Glee Club, Pres. Burrall S. S. Class, Harlequin Players, and Mrs. Bolte formerly Miss Muriel Eastman, F.S. '22, Pi Beta Phi, Theta Alpha Phi.

Louis W. Brittingham, B.S. in E.E. '24, 225 S. Catherine Ave., LaGrange, Ill., on his return from two weeks training in the O.R.C. at Camp Sparta, Wis. He is employed by the Western Electric Co., at the Hawthorne Works, Merchandise Branch, Methods & Results Division.

Warren Carver, B.S. in Ag. '22, of Clarksville.

Harold S. Cave, A.B. '17, Sigma Gamma Epsilon, Gamma Alpha, geologist with The Texas Co., Box 983, Wichita Falls, Texas, his wife and his father, W. P. Cave, L.L.B. '83, Attorney of Moberly, Missouri, visited the University in August.

Mrs. V. J. Chapman, formerly Mae Wonsetler, A.B. '10, Kappa, of Schenectady, N. Y., and her son, Jack. Mr. Chapman, B.S. in E.E. '09, is with the General Electric Co.

Miss Margaret Cogswell of Independence, Mo.

Price L. Collier, superintendent of schools, Richmond, Mo., and President of Ray County Alumni Association, and Mrs. Collier.

Lewis C. Cook, '15-'18, and Mrs. Cook, formerly Sybil Whittle, '13-'18, 114 Adams Street, Evansville, Ind. Mr. Cook is District Agent for Equitable Life Insurance Co., Old State Bank Bldg., Evansville.

Joseph P. Davies, A.B. '20, LL.B. '22, Sigma Phi Epsilon, Delta Theta Phi, Student Senate, and Mrs. Davies, formerly Mildred Spalding, B.S. in Ed. '17, Alpha Phi, and their son Joseph, Jr., visited Mrs. C. E. Spalding.

Russell W. Duck, B.S. '15, College of Agriculture, Syracuse University, Syracuse, N. Y.

Mrs. M. R. Dunn, formerly Miss Wilma Wheeler, and daughter, Jane Ann, of Kirksville visited Mrs. Dunn's mother, Mrs. Wheeler.

David C. Newell, A.B. '26, Dramatic Arts Prize '25, President Missouri Workshop, referred to in the Kansas City Star as "the good looking six-foot-two young actor," famed on the campus for his dramatic ability, is doing juvenile leads for Stuart Walker Stock Co., Cincinnati.

Carl B. Richardson, A.B. '26, is doing temporary geology work for one of the American Oil Companies in the plateau district of northern Mexico, Apartado 20, Esmeralda, Coahuila. Address mail to him at 1117 St. Louis Street, Edwardsville, Ill. Aubrey L. Glines, M.A. '26, and Chester D. Whorton, M.A. '26, are with Mr. Richardson.

J. Ewing Settle, B.J. '26, Kappa Tau Alpha, Phi Kappa Xi, is with Ferry-Hanly Advertising Co., 1110 Grand, Kansas City.

Miss Esther Severance, B.S. in B.&P.A. '26, Alpha Phi, Mortar Board, daughter of J. O. Severance, University Librarian, is enrolled in the nurses training school, Presbyterian Hospital, Chicago, specializing in children's nursing. Miss Severance writes that Bess Logan, '17, cousin of E. A. Logan's on Rollins Avenue, Columbia, is attending the nurses school. They live in the nurses home, "Sprague House."

Forest M. Wilhite, B.S. in Ed. '26, is working for a Master's degree in chemistry, University of Illinois.

Henry M. Brown is Treasurer of the Continental Supply Co., Oil and Gas Well Supplies, 1501 Locust St., St. Louis.

RECENT VISITORS

Misses Jane and Virginia Rodgers, of stage fame. They motored from their home in Mexico, where they were visiting their mother. You all know their brother, Arch, A.B. '21, United Press, Buenos Aires, Argentina, S. A. He has just been assigned manager of the United Press office at Rio De Janeiro, Brazil. Since graduation Arch has worked for the Peoria (Ill.) Journal, San Angelo (Tex.) Standard and the Sweetwater (Tex.) Reporter.

W. T. Rutherford, '89, St. Louis, and

Mrs. Rutherford, and their daughter, Mrs. Kohlbry, '25, Pi Phi, and son, James, who will enroll in the University this fall.

Richard L. Scurlock, '23-'24, now advertising manager of the Blackwell (Okla.) Tribune, and Mrs. Scurlock, B.S. in Ed. '25, formerly Gladys E. Pratt.

Kenneth C. Sears, A.B. '13, Phi Beta Kappa, Pi Kappa Alpha, and Phi Alpha Delta, formerly Professor of Law in the University, now instructor of Law in the University of Chicago.

James Herbert Sell, Arts '07-'09, Collector of Revenue, Ava, Mo., and his wife and three daughters, on their way to Colorado. Mr. Sell is planning to enroll in the University, beginning next summer, and complete work for the degree of LL. B.

Wm. Leslie Skaggs, Bachelor of Pedagogy '00, of Paragould, Ark. '08, Clinton, Mo.

Julian Clyde Spotts, B.S. in Eng. '18, and family of Washington, D. C. Mr. Spotts is with the Arlington Memorial Bridge Comm.

Judge Kimbrough Stone, LL.B. '95, Beta Theta Pi, Union Lit., Judge of the U. S. Circuit Court of Appeals, 8th Circuit, 208 U. S. Post Office, Kansas City, Mo., and his daughter, Betty Lou, who is a freshman in the University. Betty Lou represents the third generation of the Stone family, for her grandfather, the late Senator William Joel Stone, was enrolled in the University in '67. Judge Stone married Lucille May Cockrill, of Platte City, Mo., in 1906. They have another daughter, Marjorie May, who is planning to attend the University.

Brice Tinker Sutton, 1913-16 of Independence, Kansas. Visited the University in August.

John Sylvester, B.S. in M.E. and M.E. '22, Pillsbury-Becker Co., St. Louis.

Prewitt B. Turner, B.S. in Ag. '23, and Mrs. Turner, formerly Mary Bell Mundy, A.B. '23, Kansas City.

Dupuy G. Warrick, LL.B. '22, Pi Kappa Alpha, Phi Alpha Delta, Lawyer, 620 Commerce Bldg., Kansas City, and Mrs. Warrick and Davis Elkins, A.B. '18, and Mrs. Elkin, A.B. '22, formerly Julia A. Jones, of Centralia.

J. A. Whitlow, B.S. in E.E. '10, Public Service Co., Tulsa, and Mrs. Whitlow, formerly Mary Spencer '10.

Edward B. Wilkinson, LL.B. '22, Kappa Sigma, Razzers, TNE, Ag Club, Attorney, 718 Corby Bldg., St. Joseph, Mo.

Robert Woodford (Bob) Moore, B.S. in Ed. '21, A.B. '24, Student Senate, Track, 720 Joplin Street, Joplin, Mo. He is the Democratic nominee for Congress from the 15th District.

Judge G. L. Zwick, B.L. 1897, LL.B. 1899, former curator of the University and Mrs. Zwick, formerly Helen Cook, A.B. '13, Phi Beta Kappa and their daughters, Helen Virginia and Mary Gail of St. Joseph.

Don M. Hunt, LL. B. '09, S.A.E., Phi Alpha Delta, is an attorney 132 Front St., New York City. He is General Counsel and Secretary for Lamborn & Co. Inc., Sugar Importers, N. Y. and General Counsel of Lamborn Hutchings & Co., Stock Brokers, 7 Wall St., N. Y. He was Secretary to Senator Reed of Missouri from 1913 to 1921. He married Miss Lillian Bohannon of Washington, D. C. in 1921. They have one son, Donald M. Hunt, Jr.

Erma Bishop, B.S. in Ed. '10, is Associate-Editor, Dept. of Church School Literature of Publication, 2704 Pine St., St. Louis, Mo.

Robert W. Curran, B.S. in E.E. '10, is with H. L. Doherty & Co., 601 Dwight Bldg., Kansas City, Mo.

William N. Deatherage, A.B. '10, Delta Tau, who has been attorney for the Farmer's Trust Company of Maryville, Mo., has resigned to enter the practice of law there and to become Secretary-Treasurer of the book firm of C. D. Bellows and Sons, the Missouri and Kansas representatives of The Book of Rural Life, published by The Bellows-Reeve Company of Chicago. Mr. Deatherage was a member of the famous "Roper" football team of 1909. He married a daughter of C. D. Bellows, President of the Missouri State Fair.

Miss Eunice V. (Peggy) Adams, A.B. and B.S. in Ed. 1916, is teaching Mathematics in the Santa Ana, Cal., schools. She drove to Columbia from her home in Kirksville accompanied by her brother. She is one of the active members in the Santa Ana Alumni Association and is a staunch supporter of all the Alumni and University activities. It was her first visit to the campus in four years and she marveled at the growth and development.

Miss Mary Dey Faires, '23-'24. She will teach in Bartlesville, Okla., this year.

Ira W. Fischer, B. & P.A. '19, of Fischer & Fischer, Life Insurance Agents, St. Louis, and Mrs. Fischer. They were accompanied by Mrs. Fischer's parents of Denver and their son, Chester, who will enroll in the University this fall.

Edwin Rush Fleming, A.B. '06, formerly of Columbia, now Civil Engineer,

Federal Valuation of Railroads, 1901 D. St., N. W. Washington, D. C. He married Ina McConnell of Topton Ford, Missouri on February 4, 1917.

Thomas R. Fowler, B.S. in E.E. '06, Vice-President and Engineer of Air Conditioning and Engineering Co., 2914 S. Jefferson Ave., St. Louis. Resident address, 1287 Oak Court. Mr. Fowler was assistant editor-in-chief of the first Savitar. He married Miss Permelia Rosa Duncan of Columbia in December, 1895.

W. R. Gentry, Jr., LL.B. '22, Attorney St. Louis, and Mrs. Gentry, formerly Miss Elizabeth Estes, B.J. '24.

Clifford Fischer, '09-'11, Kappa Alpha, druggist of Jefferson City, and Mrs. Fischer, '16-'18, formerly Alma Cotton.

Roscoe Gillaspie, B.J. '24, Delta Upsilon, and Mrs. Gillaspie, formerly Margaret E. Edwards, '21-'25, Kirksville, Mo.

W. M. Godwin, former student '81-'85, one of the leaders of alumni activities in Clinton, Henry County, Mo. He is the father of Blakemore Godwin, A.B. '15.

Mrs. Roscoe E. Harper (Frances Corlew) B.S. in Ed. '17, A.B. '20, of Tulsa.

John C. Holloway, '06-'07, Kappa Sigma, Tomb and Key, Manager, Travelers Insurance Co., Little Rock, Ark., Mrs. Holloway, formerly Frances Benson, A.B. '14, and their son, John C. Holloway, Jr.

G. Alex Hope, A.B. '20, Federal Reserve Bank, St. Louis.

Mrs. Paul P. Howard, formerly Miss Jane Searcy A.B. '24, Chi Omega, of 908 Lincoln Place, Boulder, Colo. Her husband received degree of B.S. in Eng. '24. Mrs. Howard was formerly chief clerk in the Memorial Union and Stadium Campaign Office.

T. W. Hudson '11, of Eldorado, Kan., visited his sister, Mrs. J. P. McBain.

Mildred Irish, A.B. '23, 1915 Roanoke Bldg., 11 S. LaSalle Street, Chicago.

Lloyd R. Killam, in charge of the Y.M.C.A., Honolulu, Hawaii. He addressed a meeting of the Columbia Rotary Club. Mr. Killam married Sadie Craig of Columbia.

Walker La Burnerie '23 and wife, formerly Miss Katherine Conley, A.B. '23 of St. Joseph, Mo.

Clif Langsdale, A.B. '04, Kappa Sigma, Attorney, 922 Scarritt Bldg., Kansas City, Mo., and Mrs. Langsdale, formerly Miss Esther Smyth, Wichita, Kan. They have two daughters, Harriett and Kate. Harriett born September 3, 1911

and Kate born June 6, 1913. Mr. Langsdale's father, John M. Langsdale, was a student in the University in the seventies.

P. Loyd Lewis, B.S. in E.E. '09, of the Wagner Electric Co., and Louis K. Block, former student '14-'18, Zeta Beta Tau, Athenaeum, secretary of the Goodfellowship Committee of the Kansas City Chamber of Commerce, making preliminary arrangements for the K. C. Chamber of Commerce Goodfellowship tour to Columbia on August 24.

Edgar J. Lile, B.S. in Ag. '25, who is teaching vocational agriculture in the Palestine (Ill.) High School, and Mrs. Lile.

Luther Edward Lockwood, B.S. in Eng. '23, Eta Kappa Nu, Public Service Company, Highland Park, Ill., and his wife, formerly Miss Irma Crocker, visited her parents.

Eugene Kent Lutes, A.B. and LL.B. '15, Debating Team, Sigma Delta Rho, Attorney, 69 W. Washington Street, Chicago. With him was his brother, Lester, who has enrolled in the University to complete a course in Journalism. Mr. Lutes spent the night of September 2 in the same room which he occupied when a student, in the home of Mrs. Kerr at 317 S. 5th Street, and his brother will occupy this same room during his school career.

Dr. and Mrs. Andrew McAlester, Dr. Andrew McAlester, Jr., and Dr. John Knight of Kansas City.

Frank McCaslin, LL.B. '02, Attorney, and daughter, of Kansas City. Miss McCaslin will enter the University this fall.

Volney McFadden, A.B. '13, LL.B. '14, Attorney, 277 Broadway, New York, and Mrs. McFadden. "Vol" will be remembered as the erstwhile photographer. He took some dandy photos while on the campus and sent them to us. He writes: "We enjoyed our short visit. The stadium is ideally located and designed. The Tower is beautiful. Sorry I am so far away that I cannot attend some of the big games this fall."

Alexander Maitland, '20 and Mrs. Maitland, A.B. '22, formerly Miss Mary Bess Meserve, Kansas City.

Edwin A. Mayes, B.S. in Ag. '21, Kappa Alpha, QEBH, Pres. Ag. Club, of the United Cemeteries Co., 3517 Main St., Kansas City.

Mrs. Henry Moore, Jr., A.B. '15, formerly Olivia Smith, Phi Beta Kappa, Pi Beta Phi, 420 Pine Street, Texarkana, Tex. They have one daughter, Katharine Elizabeth.

True D. Morse, B.S. in Ag. '24, Doane Agricultural Service, St. Louis.

President Stratton D. Brooks' Annual
Address to 1926 Student Body.

(Continued from Page 55)

the bookbinder in repairing the books you wear out.

It is not prophecy but promise to assure you that college life will be interesting and enjoyable. Nor will you be deterred from active and aggressive participation in it by the assertion that it is also useful. You have been told that what a man learns from books is the least important part of a college education. And when chided for frivolity and for wasting time in campus activities, you will excuse yourself, secretly if not openly, by the assertion that the most important element of success in life is learning to associate with your fellow beings. Such a statement is of value, provided that you remember that *the condition of success is the ability to lead your fellows or at least to play an important part among the crowd with whom you associate, and that this ability to hold up your end in the game of life depends upon the academic side of your college work.* Otherwise you may be in the game as was the little boy who was chasing a half block behind a crowd that had a toy automobile. A passerby asked him if he was crying because he wasn't in the game and he replied, "Oh, I'm in the game but, I don't want to play automobile because they always make me play that I'm the smell." Many a yell leader in college has spent the rest of his life holding the blanket for the second assistant substitute. Do not fool yourself into believing that leadership in college life is any guarantee that you can carry the ball in the real game.

An entire address might well be written on the importance of the polish, that comes from association with one's fellows, and it were well for "sharks" and "greasy grinds" to study it carefully as they do their lessons. For the rest of you such an address would be dangerous, for you would ponder and remember only those portions that served to justify you in continuing activities to which you are already giving too great a portion of your thought and attention. You would forget that, after all, the friendships, the associations, and the ability to mingle with your fellows serve much as oil upon machinery. Oil without machinery makes no factory run, nor will all the arts of a "good fellow enable a bumpkin to lead a group of men who in general and technical training are better equipped than he is.

An examination of the records of graduates of colleges shows that three times as many men attain to *distinction from those who stand high in their classes, as from those who stand low.* The winning of your first case as a lawyer may depend upon the mastery of tomorrow's lesson, and the winning or losing of that first case

may mean the difference between becoming the leader of the bar in the metropolis or the poorest pettyfogging collector of bad debts at a country cross road. The saving of your first case as a physician may depend upon a knowledge of anatomy to be learned next week, and the saving or losing of that patient may mean the difference between a successful physician and one whose practice is limited largely to economy. If there is one thing that should be said to you every day, it is that there is not even a sporting chance that you will do better out of school than you do in it. What you do here conditions your future.

I once directed the attention of a professor to a rooster at the ball game, with a favorable comment as to the amount of noise he was making. "Yes," said the professor, "wouldn't it be fine if he could also make that much noise in his physics class." One can understand how your diffidence may hold you back from attracting the favorable attention of the teachers for efficient and accurate work in your studies, and how you might flee as from a plague the possibility of becoming a teacher's pet; but it is nevertheless necessary that you take some risk along these lines.

The report of the faculty as to your ability to work will open the door of your future opportunity, and what you really know and can do will enable you to make good when once the door is opened. Each year we have hundreds of inquiries about the equipment and promise of our students. Of some we should write, "He is a brilliant student with a well trained mind, but he has so far shown no ability to manage men." Of others we should write, "He has attained to popularity among a certain class of students, but the less said about his ability to work and to think, the better." But for those who have best attended to their real business here, we can say, "He has profited from his university course. He is a clear thinker and a hard worker. Whatever he attempts he does thoroughly and well. He has also been a leader in student activities. He has had a prominent part in the Y.M.C.A., in the Student Council, in college athletics, and in other ways has demonstrated his ability to get along smoothly and efficiently with his fellows. He therefore combines with excellent general and special training in the subjects preparatory to your business, those elements of personal leadership that make this preparation of greatest use. We are confident that he will be a success in his business or profession and become a leader in the community in which he lives."

Your real business here is to earn such a recommendation, and for that purpose it is only the work you do yourself that counts. This is your business and it cannot be assigned to some one else. The themes of yester-

years may be borrowed and worked off on new teachers of English, but the ability to think cogently and to express your thoughts effectively, cannot be acquired that way. You may get by a negligent or overworked quizmaster with the borrowed notes of an experiment you have never performed, but such a process will leave you helpless before the first similar piece of work that confronts you after leaving school. You can show your lack of horse sense by riding a "pony" through the classics and thus miss all the valuable results that came from the grind of language study. It is possible to drop all the hard subjects as soon as the minimum requirements are passed, and to squirm a devious route through "snaps" and "sleepers" to a diploma that represents ingenuity rather than accomplishment. Your name will then be printed on the list of alumni, but there is small chance that the university will point to you as one who has shed renown upon his alma mater. More likely you will serve the purpose of those opponents of university training who like to point to conspicuous examples of the uselessness of a college education.

Furthermore, your whole relation towards the conventions and regulations necessary for the accomplishment of our common aim, is somewhat changed. You are now a member of a community that for the common good has established certain customs—some of them formulated in definite rules—more of them not definitely stated but left to the general good sense of the student body as desirable elements in maintaining the good name of the university.

Let us end then as we began, with the statement that a man is a fool who expects some one else to attend to his business as well as he can himself. Let us each think seriously as to what our main business is, in order that we may give to it the major portion of our effort and attention.

Those regulations that are reduced to writing change from time to time, due in some cases to the fact that they are universal observations, which makes them matters of custom rather than of written law, and of the further fact that conditions and customs change, and things permitted in one period may not be permitted in another. For example, I find in the catalog of 1871 that students of shiftless ways or noisy habits are not admitted. Students must attend daily prayers, not be found loitering in the streets after dark, are expected to attend church on Sunday, to refrain from whispering in the class rooms, from spitting on the floor, from unseemly postures, from assembling about the buildings, from whistling, from sitting on the windows, shouting or calling aloud from the window, whittling the furniture, or otherwise conducting themselves not in accordance with the standards of good and virtuous young men.

The Styles you'll see
on the Campus are ready
in our store



Boyd-Richardson
Saint Louis

WHEN IN COLUMBIA COME AND SEE US

Here you will find many new ideas in party favors to spring on the club back home. Select some fine stationery from our complete stock for printing or crest embossing.

STATIONERY - ENGRAVING - EMBOSSING
PARTY FAVORS - TALLYS - PLAYING CARDS
ALL KINDS OF SATISFACTORY PRINTING

There is no time like the present for placing your Christmas Card order--by all means see our selected line. Mail orders given our prompt attention and your satisfaction is assured when you buy from us.

HERALD-STATESMAN PUBLISHING CO.

Virginia Building, Columbia, Missouri

J. W. [Jimmie] CAUDLE F. H. [Frank] SCOTT A. J. [Arthur] SNEDEKER

HARRIS'

HARRIS'

Welcome Southern Methodist University!

We shall be glad to see you on October 16. Hundreds of Tiger alumni will be here to greet you folks from Dallas.

Alumni make eating headquarters at Harris.' Alumni appointments are made by saying: "I'll meet you at Harris'."

Visitors to Columbia eat at Harris.'

Why?

Because we have excellent food, moderately priced, splendidly served.

Eat with us when in Columbia—live again in the student atmosphere—eat in a real, honest-to-goodness college eatery.

HARRIS'

Stanley Sisson and A. A. (Duck) Millard, Proprietors, both alumni

COOPER-CARLTON HOTEL

*Headquarters for the Big Athletic Events*

**They Select the
COOPER-CARLTON**

American League Baseball Clubs.
University of Michigan.
University of Wisconsin.
University of Illinois.
Purdue University.
University of Missouri.

Collegiate Athletic teams when in Chicago make the COOPER-CARLTON their headquarters. Away from the noise and congestion of the "Loop," yet only ten minutes from downtown, the COOPER-CARLTON is conveniently located near the University of Chicago.

Write or Wire for Full Information.

COOPER-CARLTON HOTEL

Hyde Park Boulevard at 53rd Street, Chicago

Special Club Rates

offered to athletic teams. Famous for preparing special menus for athletes. The Crystal Ball Room and Gold and White Room are among the most beautiful in Chicago.



For Your Convenience

You can now reverse the charges on station-to-station calls.

You can place station-to-station calls collect, whether made during the day, evening, or night, providing the rate is 25c or more.

You can call as early as 7 p.m. at reduced rates.

Reduced rate hours for station-to-station calls begin at 7 p.m.

From 7 p.m. to 8:30 p.m. the discount is approximately 25% of the day rate.

From 8:30 p.m. to 4:30 a.m. the discount is approximately 50% of the day rate.

These discounts apply where the day station-to-station rate is 40 cents or more, with a minimum reduced rate of 35 cents. The night rate is discontinued.

You will find the rates to distant points substantially reduced.

**SOUTHWESTERN BELL
TELEPHONE COMPANY**



It is so comfortable
to GO

on the



From *all-aboard* to
journey's end, you will
find on the Katy, a
courtesy, a helpfulness
and a welcome that
will impress you with
an appreciation of your
patronage.

*It's so easy to GO
on the Katy to
and from
Columbia.*

"HELD ON THE
2-YARD LINE"

THERE'S no more heart-breaking experience than to see the team battle its way down the field—around end for a yard or two, off tackle for a few more—only to be stopped dead and held for downs with a touch-down and victory only two yards away.

Just one ounce of extra power would have won the game. But the team lacked just that—that little ounce of extra power.

Every business office has dozens of men competent to do their routine work well, who can become sub-executives or assistant managers.

But there are only one or two men who—either thru years of experience, or else by carefully directed, intelligent study—know the ins and outs of their business, know it in all its departments. These are the men with the vital extra power that carries them over the line into the higher positions, and into the firm when the openings come.

For years the Alexander Hamilton Institute has specialized in the single task of training men for the higher executive positions in business, of giving them that "ounce of extra power" that makes all the difference between mediocre success and the really big things of life. Into the Course have been built the experience and methods which have made many of today's business leaders pre-eminent.

Not for one moment do we claim that we have any magic formula for success. But we do make it possible for you to gain in a few months' study what it would take you years to gain thru experience.

The Course is not a substitute for hard work or common sense.

We don't take credit for the fine work done by our graduates any more than Yale and Princeton and Harvard take credit for the success of theirs. We simply give men the facts they need to gain the extra power. If they are big enough to use these facts, they succeed. If they aren't—they would have failed anyway.

The Course and Service is arranged and conducted in accordance with University practice and ideals. Like the University, the Institute urges no man to accept its help; but, seeking the widest possible field of service, it offers information freely.

A booklet has been prepared that gives all the facts about the Institute. More than 100,000 college graduates, now in business and the professions, have read it. It answers questions that have doubtless been in your mind. It indicates definitely how this training can be useful to you in the work you are doing, or would like to do. If you would care to have a copy, write us.

ALEXANDER HAMILTON
INSTITUTE

661 Astor Place New York City

Extra fast
Extra fine
Extra fare



-only two
business
days on
the way

The Chief

New Santa Fe train de-Luxe between Chicago and- California

In response to an urgent demand, the Santa Fe will establish on Nov. 14th, a NEW daily train de-Luxe between Chicago and California—The Chief—which will set a new standard in the transportation world.

It will cost more to ride The Chief because it will be finer and faster—something distinctively superior—like an exclusive hotel or club, on ribbons of steel, speeding through a scenic wonderland, in luxury, ease and supreme comfort.

The Lounge car, and Dining car will have many exclusive Santa Fe features and managed by Fred Harvey, which means the best in the world of travel.

There will be an observation sunparlor, ladies' lounge, ladies' maid, barber and valet service, also bath.

Extra Fare \$10 from Chicago
\$8 from Kansas City—
same returning.

The Santa Fe also operates four other through trains to California every day on which no extra fare is charged. Remember Grand Canyon and the Indian-detour. (RM)



Reservations
and Details →

G. W. HAGENBUCH,
Division Passenger Agent,
Phone Bell-Main 7340,
719 Walnut St., Kansas City, Mo.

You'll Appreciate

- the Attractive Rates
- the Dining Facilities
- the Handy Location



500 Rooms

Room without Bath	\$2.00 and up
Room with Bath	\$2.50 and up
Double Room and Bath	\$4.00 and up
Room with two single beds and Bath	\$5.00 and up

RESTAURANT—COFFEE SHOP

"Service at All Times Day and Night."

POPULAR PRICES

Hotel Baltimore

12th Street and Baltimore Ave.

KANSAS CITY, MO.

Ten Reasons Why



—they all
travel between
St. LOUIS
and
Kansas City
on the
Webash



**Trains from
Kansas City**
9:00 am.
1:30 pm.
10:30 pm.

**Trains from
St. Louis at**
9:03 am.
2:00 pm.
10:30 pm.

**Lv. Delmar Ave.
15 minutes later.**

Shortest Line
Wonderful Roadbed
Exceptional Service
Delicious Meals
All-steel Equipment
Club-lounging Car
—on night train
Observation-Parlor Cars
—on day trains
Courteous Employees
Modern Sleeping Cars
Delmar Ave. Station
—a great convenience if
you live in the West End.

WABASH

SERVING SINCE 1838

Hotel Mayfair

Alumni Headquarters in St. Louis

Charles Heiss is the amiable, genial, and courteous manager. He is particularly anxious to give personal attention to University folk, their requests for reservations, and their personal comfort while stopping at his hotel.

Hotel Mayfair is the home of "The Voice of St. Louis, Inc." Radio Station KMOX, one of the largest in the United States. Mayfair guests are especially welcome to the visitor's auditorium, where you can see and hear the artists.



THE MAYFAIR HOTEL
*St. Louis' Newest and Most
Modern Hotel*

Located right in the center of the business, theater and shopping district and convenient to the St. Louis railroad Union Station, street car and bus lines.

Every one of its 400 rooms has a bath and all beds have Simmons Box Springs and Marshall Inner-Spring Mattresses.

All rooms have outside exposure, circulating ice water, electric fans, large closets, bed lamps and other unusual features.

The last word in modern hotel construction and unsurpassed service. Rates from \$3.00.

Guests of the MAYFAIR will long remember with pleasure its wonderful cuisine.

In comfortable and luxurious appointments the MAYFAIR is matchless.



DAD

THESSE are wonderful days for Dads. They have bought homes; they have bought cars; they have money saved; they have time to spend with their sons.

Who has given them this success? They themselves. Here are the figures:

In 1849 the average American factory workman produced each year \$1,000 of new products; today the average American workman produces \$7,000.

The workman of 1869 had only about one primary horsepower at his command; the workman of today has more than three horse-power working for him.

In other words, the average American workman now commands, through electricity, many times his own power. He supplies the skill; motors supply the muscle.

Every advance in electrical development, every decrease in the cost of electricity, means less burden on his shoulders, more pay, and more production from his effort.

The tired worker, worn out by his labors, is ceasing to be. In his place is a new man, commanding power, providing more easily for the needs of his family, and having time for the duty and joy of being a pal to his son.



To make available tremendous power at the touch of a switch, to help lighten thousands of human tasks, and to increase production—these are the services of electricity. General Electric Company makes apparatus by which electricity performs its useful work and stamps it with the monogram shown above.

GENERAL ELECTRIC