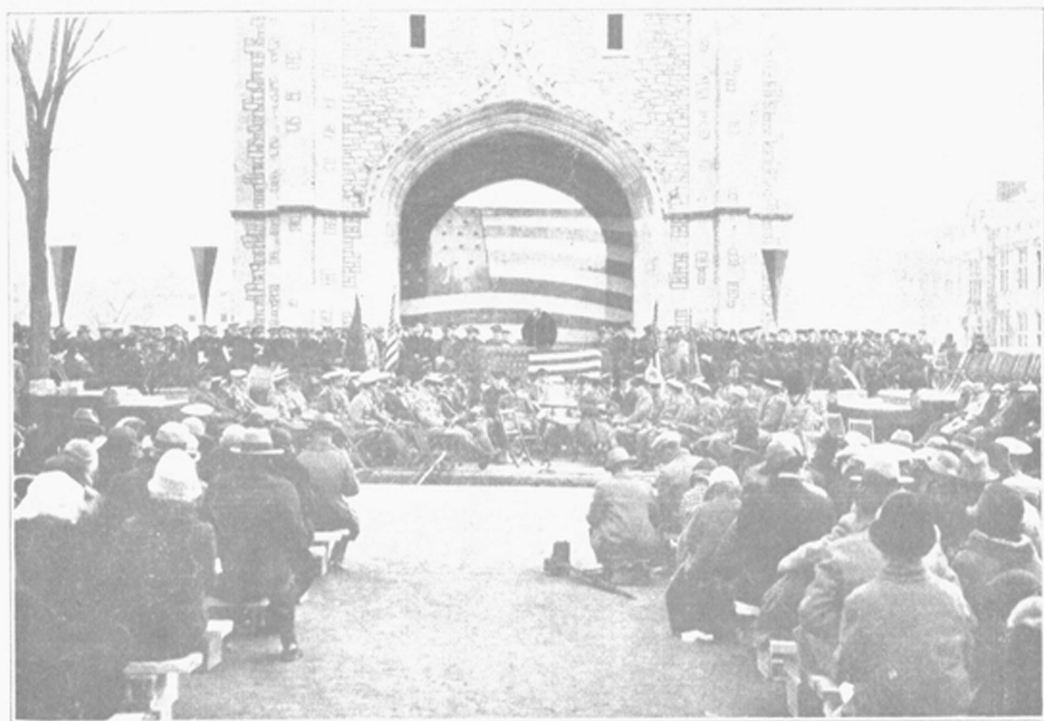


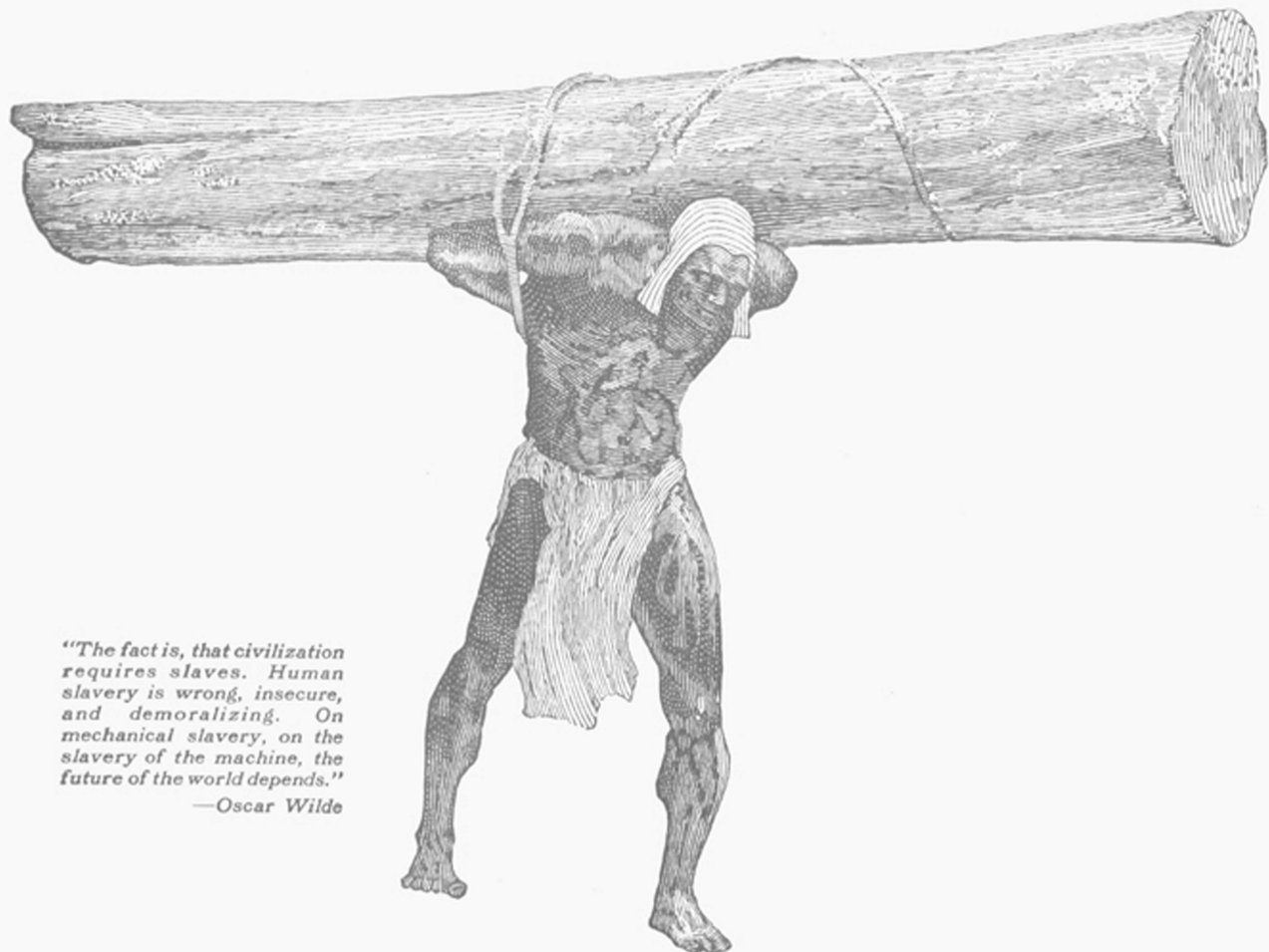
15-1/2-1926

Miss & Big Alumni  
Booklet

# THE MISSOURI ALUMNUS



Gov. Sam A. Baker speaking at the formal dedication of the Memorial Tower on Homecoming morning, November 20. On his right President Brooks, Dr. Jones, Col. Kerth, Senator Means, Joe Simpich, and the members of the Governor's Staff. On his left Frank B. Rollins, Forrest C. Donnell, Dr. Pickard, E. S. Stephens, Mercer Arnold, C. B. Rollins, Sr., and members of the faculty, the R.O.T.C. Band (Geo. Venable, director) and the Kansas and Missouri Glee Clubs (Herbert Wall, director). The speakers are facing Jesse Hall. The audience is seated on Memorial Way; the seats extended as far west as the Missouri Store Bldg. Loud speakers were provided. The large flag in the Tower was used to unveil the Honor Roll tablets upon which are engraved the names of 117 University boys who lost their lives in the World War. The flag in front of the speakers' stand covered the great floral wreath presented by Mystical Seven.



*"The fact is, that civilization requires slaves. Human slavery is wrong, insecure, and demoralizing. On mechanical slavery, on the slavery of the machine, the future of the world depends."*

—Oscar Wilde

# Slaves

In a quarter century the General Electric Company has produced electric motors having a total of more than 350,000,000 man-power. Electric light, heat, and transportation have also contributed their part to the freeing of men. These are America's slaves. Through their service American workers do more, earn more, and produce quality goods at lower cost than anywhere else in the world.



You will find this monogram on all kinds of electrical machinery. To insure quality, ask for it on the equipment you buy for your factory, office, or home.

# GENERAL ELECTRIC



## “Talk is Cheap!”

“**T**ALK is cheap—but it takes money to buy a farm!” Many a schoolyard argument of boyhood days has been ended with this homely bit of philosophy.

For the American telephone user, talk is truly cheap—cheaper than anywhere else in the world. But it takes money to keep his telephone service cheap and to make it ever and ever cheaper. The Bell System is devoting millions of dollars to research in order to discover economies that will partially offset the rising

costs of labor and materials. It is spending nearly three-quarters of a million dollars a day for new plant, every dollar of which extends the scope of every telephone and makes every subscriber's service more valuable without increased cost to him.

The savings of telephone users, invested in telephone securities, have helped to make the Bell System's nation-wide service the most economical, as well as the most efficient and most extensive, telephone service in the world.

**SOUTHWESTERN BELL TELEPHONE COMPANY**



UNITED FOR THE NATION'S NEED



# You'll Appreciate

- the Attractive Rates
- the Dining Facilities
- the Handy Location



## 500 Rooms

Room without Bath .....	\$2.00 and up
Room with Bath .....	\$2.50 and up
Double Room and Bath .....	\$4.00 and up
Room with two single beds and Bath .....	\$5.00 and up

RESTAURANT—COFFEE SHOP

*"Service at All Times Day and Night."*

POPULAR PRICES

# Hotel Baltimore

12th Street and Baltimore Ave.

KANSAS CITY, MO.

# THE MISSOURI ALUMNUS

Vol. XV. No. 4

DECEMBER, 1926

COLUMBIA, MO.

## \$6,348,962.39 Appropriation To Be Asked For During Next State Legislature

by Ted R. Gill, Representative  
Associated Press, Columbia

An appropriation of \$6,348,962.39 will be asked of the next state legislature by the University of Missouri for the biennial period of 1927-28 or \$277,920.29 less than was requested from the law-making body at its last session.

This was learned with the compilation of an official report on funds needed by the university during the next two years, which officially will be presented to the state tax commission for approval.

In making public the report Dr. Stratton D. Brooks, president of the university, declared that in requesting an appropriation of slightly more than six and one-quarter million dollars an effort was being made to develop the institution within itself, and supply it with such buildings and equipment as were vitally essential to the future life and growth of the institution, rather than to adopt a policy of expansion.

"What we need," Dr. Brooks said, "is to improve and complete the university that we have, develop it within itself, and make it modern and up-to-date, rather than expand it beyond the means of support."

At the last session of the state legislature, the university asked an appropriation of \$6,026,864.48, but the state tax commission recommended only \$2,671,700. The legislature appropriated a total of \$3,673,567.01, however, but the amount actually released to the institution by Governor Sam A. Baker was only \$2,642,034.34.

### \$2,221,000 for Maintenance

Of the amount to be asked from the legislature by the university at the next session, the largest item, \$2,221,000, would go for the support and maintenance of the institution. This amount is \$149,000 more than we asked of the legislature for that item two years ago, and \$271,000 more than was actually appropriated and released for that purpose.

Appropriations to be asked for the erection of new buildings and the purchase of land will total \$2,623,000. Of this amount, \$1,000,000 is asked for the site and building of a new auditorium, which for years has been one of the university's greatest needs.

### Need New Auditorium

The seating capacity of the auditorium is approximately 2,000, and is wholly



President Stratton D. Brooks

inadequate to handle crowds which gather here for various occasions, faculty members and university officials declare. Demand for a larger auditorium is especially urgent, they say, during the commencement exercises, and functions where indoor exercises are necessary.

An appropriation of \$133,000 is to be asked for the purchase of land for experiment work by the college of agriculture. The college now pays high rent for large tracts of land, officials declare, in order to carry out experi-

### TO OUR ALUMNI

Permit me to direct your attention to this article by President Brooks dealing with the University appropriations to be made by the next legislature. The Alumni Association is counting on every alumnus and former student for unstinted cooperation.

FRANK B. ROLLINS,  
President, Alumni Ass'n.

ments with soils and crops for the benefit of the farmers of the state. Purchase of the land, they contend, ultimately would result in a material saving of rent to the state.

### Would Complete Library

Another of the most important needs of the university, the report declares, is the erection of a library building with wings and equipment, for which an appropriation of \$250,000 will be asked. Additional buildings needed by the university and the amount of appropriations to be asked for each are: Agricultural engineering building and equipment, \$100,000; dairy building and equipment, \$275,000; education building and equipment, \$300,000; engineering building and equipment \$250,000; geology building and equipment \$150,000; greenhouse and equipment \$30,000; nurses' home, site, building and equipment \$75,000; and a service storage and warehouse building with equipment \$60,000.

Of the latter buildings, the report declares, the education and geology buildings and the nurses' home are the most urgent demands. The education and geology departments are the most crowded schools at the institution, and only mediocre quarters now are available for the nurses at the two hospitals on the university grounds.

### Other Items

The state legislature, at its last session, appropriated funds of \$200,000 for an auditorium, \$275,000 for a dairy building and equipment, and \$10,000 for a nurses' home, but the appropriations were vetoed by the chief executive.

Aside from the \$2,221,000 to be asked for the general support and maintenance of the institution, other items under that group and the amounts to be requested for each are: contingent funds, \$15,000; student labor \$25,000; publications \$20,000; agricultural bulletins, \$12,000; libraries, \$100,000; reimbursement of the endowment fund, \$8,562.39.

Other items listed in the report and the amount of appropriations to be asked for each are: upkeep of the physical plant, \$140,000; laboratories, including those for agriculture, engineering, medicine and science, \$142,710; colleges and divisions, including the special college funds, short winter courses in agriculture, hospitals, university extension, agricultural extension service, agricultural

experiment stations and engineering experiment stations, \$560,000.

Maintenance of agricultural departments, including agricultural chemistry, agricultural economics, agricultural engineering, animal husbandry, dairy husbandry, entomology, farm management, field crops, home economics, horticulture, poultry husbandry, rural sociology, soils and veterinary science, \$89,990.

Agricultural activities and state work, including free seed testing laboratory, hatch experiment farm, outlying soil and crop experiment fields, promotion of improved corn, purebred livestock, rent of agricultural lands and soil survey, \$101,500.

Special improvement and equipment items, \$213,200; re-appropriations, including funds for completion of the home economics and medical buildings, \$80,000; appropriations of past biennium not again requested, \$73,934.34.

#### Tsuneo Matsudaira, Japanese Ambassador Receives Honorary Degree From U. of M.

Tsuneo Matsudaira, Japanese Ambassador to the United States was the recipient of the honorary degree, conferred by President Stratton D. Brooks on behalf of the University at a special convocation on November 9, immediately following the unveiling and presentation of the stone lantern, which the America-Japan Society, gave to the School of Journalism. The lantern stands at the northeast corner of Jay H. Neff Hall. H. J. Blanton, editor of the Monroe County Appeal, Paris, Mo., and a member of the Board of Curators, introduced the Ambassador.

The ceremonies started with an academic procession from Jesse Hall to Jay H. Neff Hall, marching between two columns of University cadets, while the customary ambassadorial salute of nineteen guns was fired. The following Journalism students unveiled the lantern: Donald W. Reynolds, president of the School of Journalism student body; Raymond Miller, vice-president; Virginia Wood, secretary-treasurer; and Wilbur E. Moore, junior senator.

President and Mrs. Stratton D. Brooks gave a tea in their home in honor of the Ambassador, immediately following the ceremonies. This was followed in the evening by a formal banquet presided over by Dean Walter Williams of the School of Journalism. Professor Thomas S. Barclay, chairman of the committee on Public Exercises, had charge of the program of the day. The ambassador's party included Teijiro Tamura, Japanese consul, Chicago; F. Morita, secretary of the Japanese Embassy, and Oscar E. Riley, B.J. '11, A.B. '12, American Secretary for the Consulate General of Japan, New York City.

The lantern, which is seven feet tall and more than a hundred years old, is of special historical interest to Ameri-

cans because it was taken from an old estate near Sempukuji, where Townsend Harris, first American envoy to Japan, established the United States legation. The gift was arranged through the efforts of Prince Tokugawa, president of the American-Japan Society.

#### Gift Strengthens Good Will.

The gift, which is given in appreciation of the service of the University of Missouri School of Journalism has rendered the Japanese press in sending its graduates to the Orient, is regarded as a strengthening bond of good will between Japan and the United States.

Henry W. Taft, brother of the former President, was toastmaster at the annual dinner of the Japan Society in Hotel Astor last night. More than 1100 New Yorkers interested in Japan were present. Mr. Taft said: "Our guest of honor recently received an LL.D. from the University of Missouri. I shall not introduce him to you as His Excellency, the Ambassador, as that would be too formal. Nor shall I introduce him as plain Mr., as that would be too informal. Instead, I present to you the chief speaker of the evening. Dr. Tsuneo Matsudaira." (Great applause.)

#### S. A. Bond Succeeds Ralph Cuttell

S. A. Bond, of the Santa Fe, Passenger Department, has taken over the Columbia territory, succeeding Ralph E. Cuttell, who will remain in the Kansas City office as assistant to Mr. Hagenbuch.

#### KATHERINE HILLIX



#### New Secretary of Mme. Elizabeth Rethberg, Famous Soprano

Miss Katherine Hillix, A.B. '22, Phi Mu, Mortar Board, secretary of the Harlem Y. W. C. A., 74 W. 124th Street, New York City. Her home is in St. Joseph, Mo. She is secretary of Mme. Elizabeth Rethberg, famous soprano.

#### FARMERS' WEEK FOR 1927

The date of Farmers' Week at the College of Agriculture in 1927 is January 17 to 21. The College has arranged the most instructive and stimulating program ever offered at this annual gathering of the leading farmers of Missouri. The program is built on the theme of greater profits for the farmer. Systematic instruction in better methods of farming will be given by the departments of the College. Discussions of such vital subjects as the national economic status of the farmer, cooperative marketing, the outlook for the prices of farm products, and the value of institutional service to the farmer, will be heard from William Hirth of Columbia; President F. D. Farrell, Kansas State Agricultural College; President R. W. Brown, Missouri Farm Bureau Federation; and Dr. G. F. Warren, Cornell University. Dr. Ada Hart Arlitt, University of Cincinnati, will address an assembly of all departmental groups on the subject of "Child Care and Training." Former Governor Lowden of Illinois and other equally able speakers will appear on the night program conducted by the Missouri State Board of Agriculture.

Dr. W. C. Etheridge is chairman of the Program Committee.

#### Enrollment Statistics First

##### Semester 1926-27, U. of M.

S. Woodson Canada, registrar, has compiled the following statement relative to enrollment in the University for the first semester.

	Men	Women	Total
Agriculture .....	250	67	317
Arts and Science .....	1258	622	1880
Business and Public Admin.* .....	146	23	169
Education .....	42	337	379
Engineering .....	437	0	437
Fine Arts .....	33	64	97
Graduate .....	157	110	267
Journalism .....	144	109	253
Law .....	135	1	136
Medicine .....	82	3	85
	2684	1336	4020

Counted in two schools .....	68	45	113
Total .....	2616	1291	3907
Two year Winter Course in Agr. .....	50	1	51
	2666	1292	3958

# 1926 Homecoming Was Most Important in History of University of Missouri

Every Hour and Minute of the Day Was Taken to Complete  
Program That Is Now History in the  
Records of the University.

The 1926 Homecoming was the most important in the history of the University. The program started on Friday afternoon, November 19, with the Missouri-Kansas freshman football game, which was won by Kansas, 13-0. The game was played to help raise funds to build a memorial to Walter Camp at Yale Field.

The Y. W. C. A. and W. S. G. A. gave a tea at the Y. W. C. A. that afternoon. The giant mass meeting was held on old Rollins Field. The temperature was away down yonder and it was as cold as the dickens on Rollins Field but a crowd of approximately 5000 made this night mass meeting a great success. Jean Paul Bradshaw, student president, presided. QEBH, senior honorary fraternity, presented to the University the portraits of Dr. J. C. Jones and Prof. L. M. (Daddy) Defoe. The portraits were in the speakers stand and were unveiled at the conclusion of the presentation speech by George C. Willson, attorney of St. Louis. When the portraits were unveiled, Dr. Jones and Daddy Defoe, who were seated with QEBH alumni in the bleachers, were asked to stand and a flood light was directed upon them. Mercer Arnold, attorney of Joplin, a member of the Board of Curators, accepted the portraits for the University. Robert B. Caldwell, attorney of Kansas City, made the mass meeting address. There were stunts by the engineers. Don (Shorty) Swofford was the last speaker, who predicted victory for the Tigers. George Venable was there with the University band, also Bill Scannell and Larry Brill, the cheer leaders, assisted by "Doc" Miller, last year's cheer leader. John W. McCune and George Schmick were in charge.

After the mass meeting adjourned, flood lights were turned on the Memorial Tower and the thousands who attended the meeting walked by the Tower to see its beauty.

The joint Kansas-Missouri Glee Club Concert was held in Jesse Hall auditorium, immediately after the mass meeting. The numbers were so enthusiastically received that the concert lasted twice as long as was planned. Many Glee Club alumni were there and at the request of Director Herbert Wall and Dean James T. Quarles of the School of Fine Arts, they came to the platform

after the regular program and led by former Glee Club director, Dr. Hermann Almstedt, joined with Kansas-Missouri Glee Clubs in singing "Old Missouri."

The faculty-alumni reception was held in the Women's Gymnasium immediately after the Glee Club concert, the main feature of which was the presentation to the University of the portrait of Miss Eva Johnston by her former students. President Stratton D. Brooks presided. Miss F. Louise Nardin, Dean of Women, University of Wisconsin, Madison, made the presentation address. The portrait was accepted for the University by Dr. J. C. Jones. The committee in charge of presentation of Miss Johnston's portrait was composed of: Mrs. W. T. Nardin and Mrs. Earl F. Nelson, St. Louis; Mrs. J. C. Parrish, Vandalia; Mrs. George Nardin of Chicago; Mrs. DR Scott, and Miss Gladys Wheat of Columbia. Miss Johnston was presented with a parchment booklet the first page of which is the exact reproduction of the page dedicated to her as one of the founders of the A. A. U. W., at the national headquarters, Washington, D. C. The other pages contained the history of the gift and the names of the contributors. Miss Helen Baird was in charge of arrangements for the reception.

The annual Homecoming frolic was held in Rothwell Gymnasium, immediately after the reception and lasted until one o'clock. Arthur Indermark was in charge, assisted by Prof. Jesse W. Wrench and George Mueller.

QEBH held their annual Homecoming breakfast at Harris' on Homecoming morning. The following alumni were present:

Forrest C. Donnell, C. A. Jenkins, Mr. Leffler, Ed Shook, Willard Kerr, Wesley McAfee, R. H. Switzer, "Daddy" Defoe, Earl F. Nelson, F. Howard Skelley, Thomas J. Powell, Mr. Priestly, L. E. Slate, Mr. Baker, Lynn Webb, Dr. Moore, Robert B. Caldwell, Dupuy Warwick, Dave Meeker.

The active members present were: Glenn Milburn, Russell Thomas, Bill Scannell, Don Swofford, Norwood Benning, Irvin Fane, Millard Rushton, Farley, Stuber & McQueen absent on account of football.

Talks were made by each alumnus.

Plans were discussed for new enterprises and it was concluded in keeping with the presentation by QEBH of the photographs of Prof. L. M. (Daddy) Defoe and Dr. J. C. Jones, to try to make similar worth-while gifts to the University an annual occurrence. Bill Scannell presided at the meeting.

The Mortar Board breakfast was held at Harris' on Homecoming morning.

The Missouri Rifle Team of the R. O. T.C. fired a shoulder-to-shoulder match with the Kansas Rifle Team on the indoor range at Columbia, on Homecoming Day, and Missouri won by 24 points. Captain J. J. Coghlan is coach of the Missouri rifle team which is composed of: B. R. Westcott, Captain; Clark A. Luther, and E. C. Beal of Columbia; Cecil C. Couchman, Mt. Vernon, W. C. Winston, Sweet Springs; and R. Tom Wright, St. Louis. The return match will be fired in March. The Missouri rifle team schedule this year includes Nebraska, Kansas, Kansas Aggies, and Ames, for shoulder-to-shoulder matches, and a number of telegraphic matches. Rifle competition in the University is a recognized minor sport.

The Deans of the respective divisions in the University held reunions for their alumni at divisional headquarters.

Dean Guy L. Noyes of the School of Medicine and Mrs. Noyes were hosts to the alumni and former students of the School of Medicine during Homecoming and on Homecoming day they held open house for members of the Faculty and the visiting alumni. Some of the visitors were:

Dr. C. A. Good, St. Joseph, Resident Surgeon, University Hospital, 1902-4; Mrs. Sophie Evans Good, Principal, School of Nursing, 1903-05; Drs. T. E. Moore, Trenton; J. R. McVey, Kansas City; B. M. Colby, Kansas City; J. H. Oglivie, Kansas City; R. R. Wilson, Kansas City; Boyd L. Greever, Hutchinson, Kans.; J. C. Schmidke, St. Louis; P. B. Nussbaum, St. Louis; Miss Eleonora Schmidt, St. Louis; Mr. Hugo Bergman, St. Louis; Mr. John Nelson, St. Louis; Mr. Eugene H. Payne, Milwaukee, Wis.; Drs. C. W. Luter, Adrian; H. P. Muir, Columbia; F. E. Dexheimer, Columbia; Carl Greene, Rochester, Minn. Graduates and former instructors in the School of Nursing: Misses Louise Wright, St. Louis; Bertha

Love, St. Louis; Mrs. F. E. Dexheimer, Columbia, Misses Gladys Krahn, Columbia; Ora Vaughn, Columbia; Bertha Henderson, Caruthersville.

The annual luncheon for former student presidents was held at Harris'. Jean Paul Bradshaw, president, presided.

Mystical Seven held its annual Homecoming dinner meeting at Harris' after the game, Jean Paul Bradshaw, student president, presided. The following were present:

Arthur R. Ocker, 3820 Flora Bl., St. Louis; Don B. Faurot, Kirksville, Mo.; J. M. McCann, Willow Springs, Mo.; Henry B. Bass, Enid, Okla.; Ben Long, 1806 Ping, St. Louis; J. Coy Bour, 408 S. 9th, Columbia, Mo.; David Oven (Jerry), Enid, Okla.; Dolye W. Cotton, Enid, Okla.; Jean Paul Bradshaw, Lebanon, Mo.; Lorne G. Buchner, Kansas City, Mo.; Grant Wyatt, Jr., 3633 Genesee, Kansas City; William L. Shumate, St. Paul, Minn.; John W. Riley, Columbia, Mo.; Ted J. O'Sullivan, Kansas City, Mo.; Robert A. Campbell, Columbia, Mo.; Kenneth Lancaster, Kansas City, Mo.; Henry Depping, Jefferson City, Mo.; Prewitt D. Turner, Kansas City, Mo.; Chester L. Brewer, Columbia, Mo., Honorary; Vance L. Julian, Clinton, Mo.; Don McVey, Trenton, Mo.; Jesse E. Wrench, Columbia, Mo., Honorary; Roland F. (Pat) O'Bryan, Shelbyville, Mo.; Lawrence W. DeMuth, Denver, Colo.; Joseph S. Simpich, St. Louis, Mo.; Robert (Bob) Hill, Columbia, Mo.; Jerry Lewis, Trenton, Mo.; Carl Bacchus, Kansas City, Mo.; Edgar Lindenmeyer, Lake Forest, Ill.; Chas. Strop, St. Joseph, Mo.; Harry S. Lansing, Columbia, Mo.; George R. Edwards, Columbia, Mo.; Anton J. Stankowski, Columbia, Mo.

A detailed account of the formal dedication of the Memorial Tower and Memorial Stadium and a detailed account of the Missouri-Kansas game will be found elsewhere in this issue.

#### Annual Banquet of 33rd Degree Fans Pleases Record Crowd.

The annual banquet given to the Missouri football Tigers by the 33rd degree football fans of Columbia was held at the Knights of Columbus students home on the evening of December 1, and was said to be the best of these parties ever held.

The speakers were C. L. Brewer, director of athletics; Gwinn Henry, head football coach; Senator Nick T. Cave, Fulton; Representative Oak Hunter, Moberly, former Tiger football star; Earl F. Nelson, St. Louis; Frank J. McCaslin, Kansas City; Shannon C. Douglass, former President of the M Men's association, Kansas City; Major A. M. Hitch, principal of Kemper Military Academy, Boonville; Warren W. Browne, track star, St. Louis; E. Sydney Stephens and Frank B. Rollins, Colum-

## M. U. Team Places Fourth in International Livestock Show



Left to right (top row): Norwood Benning, Columbia, Missouri; H. C. Moffett, Arbella, Missouri; W. C. Bute, Centralia, Missouri; Joe F. Davis, Braymer, Missouri. Left to right (bottom row): Raymond Vadnais, Mooresville, Missouri; Lloyd M. Turk, Mr. Vernon, Missouri; Prof. L. A. Weaver, Coach; J. P. Rodgers, Bellflower, Missouri.

The Missouri stock judging team coached by Prof. L. A. Weaver of the College of Agriculture won fourth place in competition with twenty-three states and Canada in the Intercollegiate Livestock Judging Contest on November 27 at the International Livestock Show in Chicago. Missouri ranked first in judging cattle and sheep, third in judging

hogs and 17th in horses. The Missouri team was composed of N. H. Benning, W. C. Bute, Joseph Davis, H. C. Moffett, J. P. Rodgers, Jr., Lloyd Turn and Raymond Vadnais. Bute won second in individual honors in the entire contest and Rodgers and Vadnais tied for 9th and 10th.

bia, members of the athletic committee; former state senator Frank G. Harris, representative James S. Rollins, Columbia; representative Walter Robertson, Marshall; Judge H. A. Collier, who is called the "dean of football banquet speakers"; Captain Carl Bacchus, and the captain-elect, George Flamank. The entire varsity and freshmen squads were there with their coaches, including Crangle, Lansing, Stankowski, freshman coach, Maurice Moulder and Wynne Casteel, assistant freshman coaches; trainer Billy Fallon, and Virgil Spurling, secretary of the athletic committee. The banquet hall was filled to capacity. Dr. C. W. Digges was chairman of this year's banquet, assisted by: Ben W. Nowell, Jr., Frank W. Dearing, John L. Platt, Bob Richards, Barton Robnett, Thomas McHarg, Jim Garth, W. W. Garth, Jr., I. A. Barth, Leonard Morris, George Helm and Jim Caudle. Bill Scannell, varsity cheer leader, led the cheering and singing. Telegrams and letters from a host of friends were read. Stuber was awarded the Lindsey Jewelry Company watch for being the most

valuable player on the team.

Prolonged cheering resulted after the announcement that Bert Clark had been declared eligible for next year and had promised to return to school. Bacchus, Walker, Lindenmeyer, O'Sullivan, Stuber, and Studebaker, the six men who have played their last game for Missouri were given an enthusiastic cheer.

#### Famous M. U. Athlete Writes Book "How to Coach and Play Basketball"

J. Craig Ruby, A.B. '20, Phi Psi, Mystical Seven, famous basketball player, '18, '19, and '20, captain '19 and '20, and basketball coach at Missouri, now basketball coach at the University of Illinois, has just written a book on basketball, entitled, "How to Coach and Play Basketball." The book consists of 268 pages, 41 illustrations and covers every phase of the game. Considerable publicity has been given the publication and we congratulate Craig.

Mr. Ruby married Dorothy Whitney of Chicago on Aug. 11, 1924. They live at 1015 W. Charles St., Champaign, Ill.



# Yes, We Lost the Valley Championship But Won the Kansas Game, 15-0

Sweet Victory Over Kansas Takes Some of the Sting Out of the Defeat by the Sooners, Which Upset the Entire Valley "Dope."

By JOHN PHILIP HAMEL

Gwinn Henry's University of Missouri football team with a victory so decisive as to remove the last shadow of a doubt as to the comparative strength of the two elevens, turned back Kansas, 15 to 0, Saturday afternoon, ringing down the curtain on the 1926 grid season, and further enriching the rich traditions of the old Tiger school.

From the smashing Tiger drive of the first minutes of the game there could have been no doubt of the outcome in minds of either Tigers or Jayhawkers. Missouri had power, fight and crafty generalship. Kansas may have had power and generalship, but without power sufficient to get into a position to exercise the other two attributes of winning football, the Jayhawks could only battle stubbornly with their backs to the wall, stopping the Tigers when they could.

Repeatedly Kansas was forced to punt from or behind her own goal, and never did the Jayhawkers advance to a position from whence they could even test the vaunted skill of their goal kickers. So persistently did the Tigers keep the visitors deep in Kansas territory that they were never in a position to try the passing game. Only on two occasions, in the waning moments of each period, did they resort to the overhead play, and of their seven attempts they completed one, Missouri intercepted two, and the other four were grounded. One of those intercepted was speedily turned into a touchdown for Missouri, and the Tiger substitutes were on the way to a second counter when the final gun sounded, shortly after Byars had intercepted a Kansas toss.

Zuber, Kansas Captain and punting ace held a slight advantage over Stuber, Missouri's crafty quarter, but Clark's and O'Sullivan's magnificent returns of the Kansas punts more than offset any advantage which the Kansans held in the kicking game.

#### Punt Returns Effective.

Had the two teams been evenly matched in every other department of the game, those punt returns must have turned the tide of battle in favor of Missouri. While Hamilton, the K. U. safety man, was either signaling for fair catches or letting Stuber's boots roll down the field until Bacchus or Tarr dashed down to ground them, the Tiger backs were taking every

Will Lead the 1927 Tigers



George Flamank, (Big George) star fullback of the 1926 Tigers, a junior in the College of Arts and Science, from St. Joseph, Mo., captain of the 1927 football team. He is a graduate of the St. Joseph Benton High School, where he was a star in football, basketball, and track, and an excellent student. He was awarded three numerals as a freshman in the University. As a sophomore, Flamank made a letter as substitute fullback and played regularly in basketball and baseball. He was the only sophomore in the University to make three major letters last year. He is a member of the Student Council and the Delta Tau Delta fraternity.

Kansas kick and racing back for returns of 10 to 20 yards.

The Tiger line was superb. At ends Bacchus and Tarr were down under every punt; in scrimmage Lindenmeyer, who played most of the game at tackle, Studebaker, Miller, Walker, Morgan, and the others who worked in the Bengal forward wall presented a front which Kansas rarely dented. When Zuber punted he was constantly in trouble from the rushes of the Missouri forwards.

O'Sullivan, who has all season borne much of the brunt of blocking, not only ran his usual brand of interference, but uncorked scrimmage gains that left the Kansans breathless, while Clark proved as good off tackle as he was at taking punts and receiving passes. The line plunges of Flamank and Tuttle, who alternated at fullback, rolled back the Kansas defense as an army tank might have done, and reached their climax when Tuttle dragged a pair of Jayhawk tacklers across the goal line in his 10-yard dash for the first Missouri touchdown.

The day left much to be desired. It was gray and cold to start the game, and before the struggle was well under way there was a snowstorm which reached almost blizzard proportions. A few of the spectators left the Kansas sections, but in the Missouri stands the front was unbroken. Tiger rooters were seeing the kind of a spectacle they most enjoy, and it would have taken a cyclone to have moved them before the final play was executed.

The field was in good condition, however, except toward the close, when an inch of snow made it a trifle slick, and cold did not appear to hamper the Tigers. There were few fumbles, and the ball was handled by the Missourians as well as if they had been playing on a balmy October day.

#### Tiger Stadium Stood Test.

The new Tiger stadium, dedication of which was an outstanding event of the afternoon, stood every test of its opening. Spectators who arrived before the kickoff were seated promptly and without confusion, while at the end of the game the big crowd, which almost filled the stands to capacity, flowed out naturally over the tops of the two great bleachers. Those who walked to the game encountered little delay in getting away, while those who drove suffered much less difficulty than the great number of cars and the trying weather conditions might have indicated.

Local officers and deputies battled the vehicle tangles valiantly, and while the heavy snowfall made going difficult, they kept traffic moving with surprising rapidity. It required much less time to get away from the Missouri stadium Saturday than it does at many of the other big fields in the country which are much better served with streets than the Tiger field.

But back to the game. When Cap-

tain Zuber won the toss and chose the wind aided north goal the Tigers left no doubt of their intention to carry the battle to the Kansans when Captain Bacchus elected to receive the kickoff. And carry the battle to Kansas they did. Clark took ball on the Missouri 10-yard line and returned the kickoff 19 yards. Clark, O'Sullivan, and Flamank hit the line in order and it was first down. Then, after two more tries at the Jayhawk forward wall, Stuber punted to the Kansas 12-yard line.

#### Ball Seldom in Tiger Ground.

The ball was in Kansas territory to stay. Only twice in the first period were the Jayhawkers able to even kick the ball across midfield, and on both occasions Clark's return put it back in Kansas territory before he was downed. And at no time during the game did Kansas cross the 50-yard line with the ball in her possession.

The Tigers carried the attack to the visitors throughout the first quarter, ending the period with a scrimmage march that put the ball on the Kansas 26-yard line. When the Kansas line strengthened a trifle at the start of the second period Stuber tried an unsuccessful place kick from the 32-yard line.

A punting battle across midfield followed for the first half of the second quarter, and it was during this time that the Kansans came nearest to holding Missouri even. Then, when Zuber punted out of bounds on the Missouri 32-yard line Tuttle broke away for a 16-yard gain for first down. Clark made another first down, and then took Stuber's pass for a 22-yard gain which placed the ball on the Jayhawk 11-yard line. It was this march which set the stage for Tuttle's 11-yard crash through center for the first Missouri score which climaxed an unchecked 68-yard Missouri advance. Stuber's point was good.

Kansas made the second of her two first downs following the ensuing kickoff, Thornhill going into the Jayhawk backfield and passing to Shannon to put the ball on the Kansas 32-yard line—the farthest point of advance by Kansas in the first half. Three subsequent passing attempts were broken up by Tigers however, and the resultant five-yard penalties put the Kansans back, forcing Zuber to punt as the half ended.

The Jayhawkers came back for the second half without having gained an ounce of fighting strength apparently, while the Tigers romped out stronger than at the start. Clark reeled off a 19-yard return of the K. U. kickoff to start a march which was only halted after two Missouri first downs had advanced the ball to the Kansas 35-yard line. Then Stuber punted and Hamilton elected a fair catch on his own 10-yard line.

Starr tried to punt from his own goal, and his effort was blocked, but Kansas recovered and Zuber, rushed back into the lineup, got off a boot that carried the ball almost to midfield.

Back came Clark and O'Sullivan with the ball, however, and again Missouri was inside the Kansas 20-yard line. Stuber's try for goal from placement failed, however, and the balance of the period was spent in a kicking battle, a 15-yard penalty suffered by Missouri and an 18-yard loss suffered by Stuber, when he tried to pass and could find no one open, aided the Jayhawkers in keeping the Tigers from threatening again in that frame.

Early in the final period the Tigers pushed the visitors back deep into their own territory. Then, as Zuber stood almost on his own goal line to punt, Bacchus broke through and blocked the try, Tarr falling on the ball as it rolled out of the end zone. It was a Kansas safety, and added two points to the Tiger total.

Kansas put the ball in play with a free kick, and again, aided by Clark's return, the punting battle turned to Missouri, and the Tigers gained 10 yards on each exchange. Stuber finally punted over the Jayhawk goal, and Zuber, with the ball in Kansas' possession on the 20-yard line, opened a desperate passing attempt. Stuber went into the air for Zuber's toss, took it and raced to the Kansas five-yard line. Two tries at the line followed, then Bacchus went behind the goal to take O'Sullivan's pass, and the count stood: Missouri 15, Kansas 0. Stuber's try for goal was wide.

In came a flock of substitutes that took every Tiger regular from the game. Perhaps Kansas had a chance to score. But, no. Coach Henry's second choice was as good as his first. Bob Byars cut short Zuber's new attack just as Stuber had ended his previous one. It was over.

#### The score by quarters:

Missouri .....	0	7	0	8—15
Kansas .....	0	0	0	0—0

#### The lineups:

Missouri	Position	Kansas
Bacchus (c)	le	Hauser
Lucas	it	Voigts
Walker	lg	Cloud
Morgan	c	Davidson
Miller	rg	Myers
Studebaker	rt	Cramer
Lindenmeyer	re	Schenk
Stuber	qb	Hamilton
O'Sullivan	lh	Shannon
Clark	rh	Zuber (c)
Flamank	tb	McMillan

Substitutions: Missouri—Gann for Walker, W. Smith for Studebaker, Tuttle for Flamank, Diemund for O'Sullivan, G. Smith for Morgan, Tarr for W. Smith, Walker for Gann, Flamank for Tuttle, O'Sullivan for Diemund, Morgan for G. Smith, Tuttle for Flamank, Gann for Miller, Brown for Tarr, Lee for Lucas, Lyons for Morgan, Christian for Walker, W. Smith for Lindenmyer, Willner for Bacchus, Rosenheim for Stuber, Gorman for O'Sullivan, Byars for Tuttle. Kansas—Mackie for McMillan, Thornhill for Mackie, Starr for Zuber, Raup for Thornhill, McMillan for Raup,

Zuber for Starr, Lattan for Creamer, Taylor for Cloud, Raup for McMillan.

Missouri scoring: Touchdowns—Bacchus, Tuttle; point after touchdown, Stuber. (Safety scored when Bacchus blocked Zuber's punt and ball rolled back of end zone.)

First downs—Missouri 12, Kansas 2.

Yards gained in scrimmage—Missouri 194, Kansas 29.

Yards lost in scrimmage—Missouri 50, Kansas 6.

Kickoffs—Missouri 2 for 37 yards; Kansas 2 for 100 yards.

Yards gained returning kicks—Missouri 182, Kansas 32.

Punts—Missouri 12 for an average of 35.2 yards; Kansas 15 for an average of 39.5 yards.

Penalties—Missouri 40 yards; Kansas 25 yards.

Forward passes completed—Missouri 2, by Kansas none.

Referee—J. C. Grover, Washington; umpire—F. E. Dennie, Brown; field judge—W. G. Krause, Washington; head linesman—Warren Giles, Washington and Lee.

#### Tentative Plans Made for Missouri Valley Intercollegiate Glee Club Contests.

Herbert Wall, Director of the Glee Club, recently attended a meeting in St. Louis, where tentative plans were made for a Missouri Valley Intercollegiate Glee Club concert contest, which will be held at Washington University field house on the night of February 4. Seven thousand tickets are to be sold. Each school in the Missouri Valley conference will participate. E. B. Conant, member of the Washington University faculty, and vice-president of the Glee Club Contest Association, is making detailed plans in St. Louis. Erwin W. Clausen, attorney for the Southwestern Bell Telephone Co., and President of the St. Louis Alumni Association, has pledged the support of the St. Louis alumni and will work with Prof. Conant.

The winner of the contest will compete in the final national contest in New York City on March 28. Missouri won the Valley contest, year before last, won third in the national contest, and was second in the valley contest last year. Director Wall has been working diligently for weeks with the Club and the prospects are for a wonderful showing at the contest in St. Louis on February 4.

The Club plans an extensive trip over Missouri this year and the alumni associations in the towns and counties of the state are cooperating in a wonderfully fine fashion. The Glee Club has established an exceptional record and is a wonderful organization, deserving of unstinted cooperation of the alumni.

J. S. Buchanan and Lee Wilson of the Wabash Railway Co., have spent considerable time recently arranging for the departure of the Stephens and Christian College girls and the University students for the Christmas holidays.

# Bronze Tablet and Portrait of the late Dr. Henry J. Waters Presented to University

County extension agents of the University of Missouri on Dec. 9 paid tribute to the memory of the late Dr. Henry J. Waters, first graduate of the College of Agriculture, formerly dean of the Missouri College of Agriculture, and later editor of the weekly Kansas City Star, by presenting a bronze tablet of the nationally-known agriculturist to the university, placed in the Agricultural building named in his honor, Waters Hall.

Presentation of the tablet, one of the features of the annual convention of county agents of the state in session here, was made on behalf of the county agents by Stuart Leaming, agricultural representative of Clay County. Dr. Stratton D. Brooks, president of the university, and Dr. F. B. Mumford, dean of the Missouri College of Agriculture, accepted the gift in behalf of the Board of Curators.

"The scope of his endeavors have been so wide and so wisely administered that men to come will say that he was a leader who rendered a great public service," Dr. Brooks said, in eulogizing the work done by Dr. Waters for the benefit of agriculture. "Not until the last wavelet of his influence has ceased to cause a ripple upon the shore of eternity, may we say that his time has ended.

### Can't Foresee Benefits.

"We who know that men who have been dead for centuries still have greater effect on modern life than do millions of men now living, cannot even predict the limit of their influence. In fact, such evidence as we have leads to the belief that rather than ever reaching its end, it will in truth be everlasting.

"This tablet is being placed here by his loving friends and admirers, the county extension agents of the University of Missouri, in order that we may have a visible memorial to remind succeeding generations of students of the life work of a great man. May it also stand as a perpetual reminder that his services did not end with death, but that his influence will be ever with us unto a far distant end that none of us can prophesy."

### Chief Work Is Spiritual.

Dr. Mumford paid a glowing tribute to Dr. Waters not so much for what he did while dean of the Missouri Agricultural College, but for his work as a leader among the nation's greatest agriculturists.

"The greatest contribution of Mr. Waters to the College of Agriculture is not to be measured primarily in the number and size of buildings or of other physical equipment," Dr. Mumford said. "His chief contribution is

spiritual. It is to be found in the ideals and standards which have influenced the growth of the institution from the beginning.

"We honor ourselves in honoring the memories of great men who have made real contributions to agriculture. They will not have lived in vain if their example shall influence us to attain the same high standard of earnest purpose and of successful achievements."

In presenting the tablet to the University Leaming spoke of Dr. Waters as a friend of the county agents, because "he was a friend of farm people and had a great belief in the value of agricultural extension in developing leadership and more prosperous and contented farm people."

### Debt of Gratitude.

"Agriculture owes a great debt of gratitude to the untiring efforts of this man," Leaming said, "and the county extension agents wish to pay a tribute to his memory. In presenting this memorial to the university we do not only pay our tribute to Dr. Waters as a man, but to the principles for which

he stood and which will endure long after his work has been forgotten."

Dr. Waters was a former president of the Kansas State Agricultural College before he became editor of the Weekly Kansas City Star, a position which he held until his death a year ago.

A portrait of Dr. Waters was formally presented to the College of Agriculture by former colleagues, students and friends on December 16 in the agricultural library. The portrait was painted by Arvid Nyholm of Chicago. Prof. M. F. Miller made the presentation address. Dr. J. W. Connaway spoke on the work of Dr. Waters and Dean F. B. Mumford accepted the portrait on behalf of the College of Agriculture. W. A. Cochel, who succeeded Dr. Waters as Managing Editor of the Weekly Kansas City Star, delivered an address. Mr. Cochel was associated with Dr. Waters at the Kansas State Agr. College. Prof. T. J. Talbert and E. A. Trowbridge were on the presentation committee.

Mr. H. J. Waters is living in Columbia with her mother, Mrs. B. A. Watson. H. J. Waters, Jr., is with the Columbia Daily Tribune. He married Miss Harriett Elizabeth Jacquin, A.B. '22.



Miss Estelle Hickok, Secretary to the President of the University, recently elected President of the Faculty Women's Club.

### Will Ask \$1,227,250 Appropriation for Rolla School of Mines.

An appropriation of \$1,227,250 for the biennial period of 1927-28 will be asked of the next state legislature by the Missouri School of Mines and Metallurgy at Rolla.

Of the total amount to be asked of the legislature at its next session by the school of mines \$570,000 would go for the support, and maintenance of the institution and salaries for faculty members.

One new building for ceramics and geology is needed by the school of mines, the report stated, for which an appropriation of \$200,000 is to be asked. Forty thousand dollars will be requested for the reconstruction of the mechanical hall. Reconstruction of the school's hospital also would be made, and an appropriation of \$12,000 for that purpose will be requested.

Other appropriations to be asked by the school of mines include \$6,500 for a telephone exchange; \$10,000 for a rifle range; \$10,000 for campus roads and improvements; \$20,000 for the purchase of land; \$30,000 for repairs to buildings; \$50,000 for the support of experiment stations; \$58,000 for a fuel and power house; and \$10,000 for student help.

# With The Alumni Associations

## COLE COUNTY

Dr. Stanley P. Howard was elected President of the Cole County Alumni Association of the University of Missouri at the annual get-together banquet and business meeting held November 16th, in the dining room of the New Central Hotel, Jefferson City, Missouri. The new executive has taken a lead in the activities of the organization here and his election will be greeted with universal approval.

Other officers chosen were Roger V. Smith, Vice-President, and Mrs. James T. Blair, Jr., Secretary-Treasurer. A number of committees will be appointed in the near future.

C. L. Brewer, Missouri's athletic director, was the principal speaker.

A. A. Speer, member, Board of Curators, spoke on "The University at Present."

Prof. Wm. Knox, President, Jefferson City Junior College, and Supt. of Schools, looking ahead, spoke on "The University of the Future."

Henry Depping, a former student President, told of "The University at Close Range."

Attorney James T. Blair, Jr., talked of "The Cole County Alumni."

B. H. Piepmeier, Chief Engineer, Missouri State Highway Commission, told of the "Roads to the University."

Julius Meyerhardt, a student in the University last year, told of "Recent University Activities."

Charles Dewey, a former Tiger football player, told of "Football in the old days."

Thomas L. Price, also a former Tiger player, spoke of "Football Comparisons."

The following attended the banquet:

H. H. Lotter, Ralph Wisdom, C. L. Brewer, Athletic Director, A. A. Speer, Julius Meyerhardt, C. W. Brown, Charles E. Dewey, John G. Gibson, L. W. Helmreich, Thomas L. Price, W. W. Gibbany, James T. Blair, Jr., R. E. Shoop, Mrs. James T. Blair, Jr., F. L. Stuckey, J. J. Wallendorf, Robt. W. Hodson, Mrs. J. J. Wallendorf, Mrs. Robt. W. Hodson, Curtis L. Dunn, Dr. Stanley P. Howard, J. A. Potter, Mrs. Stanley P. Howard, Henry Depping, Miss Gracia Walsh, Miss Hortense Kolkmeier, Dr. R. P. Dorris, Miss Mary Cleopha Brenneisen, Miss LaRue Raithel, Charles Lee, John E. Wendleton, Felix Kersting, Roger V. Smith, Felix Kersting, Jr., Russell Keyes, Miss Sarah Margaret Cole, R. E. Duffy, B. H. Piepmeier, Mrs. B. H. Piepmeier, Clyde E. Humphrey, Miss Edna Robinson, Guy M. Berry,

Mrs. Guy M. Berry, Frank Whaley, Clay W. Lewis, Roy C. Johnson, Mrs. Roy C. Johnson, Lillian Tweedie, Adelaide Schott, William R. Tweedie, Emily Ames, Catherine Hope, Mrs. Means Ray, Mrs. William V. Ingles and Mrs. Tolbert.

Col. H. H. Lotter, '97, of the U. S. Department of Agriculture, Bureau of Public Roads, retiring President of the Cole County Alumni Association, presided at the dinner. Col. Lotter is a member of Governor Baker's staff.

## PITTSBURGH

The annual fall dinner meeting of the Pittsburgh Alumni Association was held at Dudley's in Wilkinsburg on November 27. The Missouri-Kansas game furnished cause for rejoicing at that time. The following officers were elected for the coming year: J. F. Calvert, President, 1435 Foliage Street, Wilkinsburg, Pa.; E. J. Mason, Vice-President, 56 Taylor Avenue, Crafton, Pa.; W. M. Alcorn, Secretary, 100 E. End Ave., Pittsburg, Pa.; T. D. Cunningham, Treasurer, 513 Holmes Street, Wilkinsburg, Pa.

At eight o'clock the meeting was adjourned and twenty-one members migrated to the first meeting of the Missouri Valley Club of Pittsburgh. There were sixty-two at the meeting. The speakers were Mr. David MacCahill, former graduate of Drake, now President of the Harminy Lines, Mr. R. A. Seaton, Dean of the Engineering School at Kansas State Agricultural College, and Mr. C. S. Coler, of the Westinghouse Co. Moving pictures of the 1925 Missouri-Oklahoma game and campus scenes at Missouri were shown. The idea of a Missouri Valley organization was accepted enthusiastically by the alumni of all the institutions of the Valley who now live in this district. It was felt that no meetings of the chapters of the individual schools need be sacrificed for this new organization but that this new organization would fill a need which no single chapter could do. Plans were discussed for giving the Nebraska football team a great reception when they come to play the University of Pittsburgh in the fall of 1927 and hopes were expressed that other intercollegiate activities would be arranged between the institutions of this locality and those of the Missouri Valley, which would foster friendly relations between the schools of these two sections of the country. Other meetings were discussed which would carry forward the spirit of the Missouri Valley among the graduates of this district.

## CHICAGO

George (Pip) Palfreyman, Jr., '11-'14, President of the Chicago Alumni Association, is already making arrangements for a great outdoor gathering of the alumni and former students in and around Chicago, to be held some time in the early spring. Mr. Palfreyman announced that there were so many things going on during the last few weeks that it was impossible to schedule a fall meeting, but that nothing would be left undone to make the spring meeting a wonderful party. A goodly number of the Chicago alumni attended Homecoming, including Mr. and Mrs. Frank Thacher, Mrs. Francis Darr, Mr. and Mrs. Chas. E. Kane, and Lee Walker, who said, speaking for Chicago: "We are very proud of the Stadium. It is a beautiful piece of engineering and provides an impressive sight. The whole thing made me extremely proud of our school. The Memorial Tower is a very beautiful piece of work, and is also something to be proud of. I was especially struck at Columbia by the number of new and fine houses that have gone up in the years since I lived there. As for the personal side of my visit, I met more old timers than I had ever hoped to run across, and I was really thrilled by the experience. I am certainly planning to come back two years from now."

## WASHINGTON, D. C.

A reception was given at the Cosmos Club on November 15th in honor of Dr. Stratton D. Brooks by the alumni of the University of Missouri residing in Washington, D. C. In the receiving line were: Dr. Brooks, Dean Mumford, Dr. Louise Stanley, Mr. James Hubert Van Wagenen, Mr. Walt Mandry and Mr. John S. Hornback, President of the Washington Alumni organization. After the social hour, Mr. Hornback called the meeting to order and short talks were made by Dean Mumford and President Brooks. The Alumni were greatly interested in the recent developments at the University and President Brooks gave vivid descriptions of the new Memorial Tower and the Memorial Stadium.

Since the last meeting of the alumni association, Miss Lola L. Scrutfield, the Secretary-treasurer, moved to California and Miss Jena De Imhoff was selected to fill the position until the

annual banquet and election of officers in February.

The following were present at the reception:

Dr. Stratton D. Brooks, Dean Mumford and Mrs. Mumford, Dr. Loujse Stanley, Mr. and Mrs. James H. Van Wagenen, Mr. Walt Mandry, Mr. and Mrs. John S. Hornback, Miss Jane Anderson, Miss Mary Meek Anderson, Miss Ilena M. Bailey, Mr. and Mrs. M. H. Brinkley, Mr. John B. Gordon, Mr. F. F. Hanly, Miss Jena De Imhoff, Mr. David Katz, Miss Grace J. Lynn, Mr. Austin Rice, Mr. and Mrs. F. B. Scheetz, Miss C. Rowena Schmidt, Mr. Charles Thom, Dr. P. F. Trowbridge, Mr. and Mrs. Francis Colt de Wolf, Mrs. Edith Webb, Mr. James Langston.

### NEW OFFICERS OF THE KANSAS CITY ALUMNI ASS'N.



Left to right: Dupuy G. Warrick, lawyer, 620 Commerce Bldg., President; Frank J. McCaslin, Manager, Missouri State Life Insurance Co., athletic committeeman; Larry M. Dike, Ass't Manager, Missouri State Life Insurance Co., first Vice-President; Wm. R. Hornbuckle, Missouri Abstract and Guaranty Co., Secretary; Julian Wornall, President of the Broadway Bank, Treasurer.

John E. Miller, of the National Life Insurance Co. of Vermont, second Vice-President is not in the picture.

The Kansas City Alumni Association held its annual fall dinner and election of officers at the University Club there on November 17, and elected as their President, Dupuy G. Warrick, LL.B. '22, Lawyer, 620 Commerce Bldg. The other officers elected were: Larry M. Dike, 1st Vice-President; John E. Miller, 2nd Vice-President; Wm. R. Hornbuckle, Secretary; and Julian Wornall, Treasurer.

Board of Governors (one year term): R. V. Aycock, George H. Charno, Shannon Douglass, Jas. E. Gibson, Joseph Kessinger, Harry B. Walker.

Board of Governors (two year term): Carl L. Crocker, Dr. John F. Knight, Clif Langsdale, Harry K. Poindexter, Joseph F. Porter, Jr., Dr. C. Edgar Virden.

Harry B. Walker, retiring President was toastmaster. The principal address was delivered by Dr. Jay W. Hudson, Professor of Philosophy at

the University. Other speakers were, John T. Harding, Spencer Harris, Dupuy Warrick, and Frank J. McCaslin.

The Kansas City Alumni Association has had a remarkable year under the administration of Harry B. Walker and his co-workers, and they deserve unstinted commendation and congratulations from the Kansas City alumni and from the host of University friends and from those on the campus. As their work has developed on a constructive basis so have they laid plans for others and the retiring administration turns over to Mr. Warrick and his official family a perfect organization with which to carry on. Wm. R. Hornbuckle was elected secretary to succeed James E. Wilde, who is now in business in Columbia, and Frank McCaslin succeeds Spencer Harris on the athletic committee.

Every one of the newly elected officers of the organization attended the Homecoming and Memorial Tower and Memorial Stadium dedication exercises here on November 20. Shannon Douglass came down the day before and chaperoned two motor bus loads of high school students, who were the guests of the Kansas City Alumni Association at the Homecoming exercises.

This was Dr. Hudson's second speech to the Kansas City Alumni Association during the last year. The alumni office is deeply grateful to all of the Kansas City alumni officers for the fine work that they are doing.

### ALUMNI OF SCHOOL OF EDUCATION

A. H. Monsees, B.S. in Ed. '13, A.M. '17, principal of the Southwest High School, Kansas City, presided at the annual dinner of the alumni and former students of the School of Education, held annually during the Missouri State Teachers' Association meeting, this year on November 11 at the Baltimore Hotel. Miss Jane Adams, Paseo High School, Kansas City, extended greetings. The Southwest High School orchestra furnished the music. Chas. S. Parker, led the singing. Miss Virginia Robertson of Central High, gave a reading and addresses were made by F. C. Irion, Westport High School, Harry B. Walker, President of the Kansas City Alumni Association, Dean M. G. Neal, of the School of Education, and Dr. Sheldon E. Davis, President, Dillon, Montana Teachers College. It was a great party, well attended and brought together a lot of very substantial alumni and former students.

### ALUMNI OF COLLEGE OF AGRICULTURE

The annual meeting of the alumni of the College of Agriculture which is held at the annual Royal Live Stock Show each fall was held at the Dreyfus Hotel on November 15. The arrangements were in charge of Ira Drymon, county extension agent of Jackson county, Independence, Mo. E. A. Ikenberry was chairman and toastmaster. The following responded to toasts: Ray Jones, Guy James, Dutch Angerer, Asbury Roberts, L. M. Turk, A. B. Weaver, Max Beeler, Bill Angle, and Congressman W. L. Nelson.

The following were present: T. F. Schowengerdt, Columbia, '14-'17; E. A. Ikenberry, Independence, '07-'11; E. A. Trowbridge, Columbia; W.

L. Nelson, Columbia; S. T. Simpson, Columbia, '07-'12; Charles C. Brown, Carrollton, '21; H. M. Garlock, Columbia; M. N. Beeler, Topeka, Kansas; L. A. Weanrd, Columbia, '05-'10; J. W. Burch, Columbia, '12-'16; C. S. Maddox, Grain Valley, Mo., '21-'25; M. B. Ditty, Higinville, Mo., '18-'20-'22-'24; Wendell Holman, Humansville, Mo., '16-'20; Dave Meeker, Warrensburg, '20-'24;

J. L. Ingwersen, Webb City, '12-'15; Coe Pritchett, Independence, Mo., '23; C. L. Angerer, Jefferson City, Mo.; M. R. Dunn, Kirkwell, Mo., '14-'18; Guy E. James, Jefferson City, Mo.; H. W. Guengerich, Independence, Mo., '13-'17; A. D. Jones, Kansas City, Mo., 911 Comm. Bldg., '10-'14; C. R. Howell, Neosho Rapids, Kansas, '24; Asbury Roberts, Sweet Springs, Mo., '17; Ross

Welsh, Columbia, Mo., '24; Joe Davis, Braymer, Mo., '27; Herbert C. Moffett, Memphis, Mo., '27; Lloyd M. Turk, Mt. Vernon, Mo., '28; S. F. Russell, Columbia; Raymond R. Vaehnais, Mooresville, Mo., '27; Joe A. Grant, Columbia, '28; W. C. Bute, Centralia, Mo., '29; Ira Drymon, Independence, Mo., '14-'18; W. T. Angle, 3721 Wyoming, Kansas City, Mo., 1921.

### Alumni of the School of Business and Public Administration

The alumni of the School of Business and Public Administration, who held a meeting on Homecoming Day in 1925 for the purpose of organizing, were again assembled on last Homecoming Day. At this second annual meeting there were in attendance about twenty-five alumni and former students of the school and five faculty members, and not the least of the benefits derived from being there was the renewing of old acquaintances and the making of new ones. One of the avowed purposes of the association is to promote mutual acquaintance and good fellowship among all its members.

The meeting was held in the Commerce Building. Some time was spent in exchanging greetings, after which the business session was held, and then those present repaired to the Memorial Tower to witness the dedication ceremony.

The principal items of business transacted consisted of the adoption of a constitution, (lack of space does not permit of its reproduction) and the election of officers as follows:

President, One Year Term, R. D. M. Bauer ('23) St. Louis, Mo.

Vice-President, one year term, Sherlock Hibbs ('26) Manhattan Beach, N.Y.

Vice-President, one year term, J. M. Himmelberger, ('22), Morehouse, Mo.

Vice-President, two year term, Clyde Hood, ('25), Joplin, Mo.

Vice-President, two year term, E. W. Mounce, ('21), Columbia, Mo.

Vice-President, three year term, D. J. Oven, ('17), Enid, Okla.

Vice-President, three year term, C. E. Riutcel, ('24), Kansas City, Mo.

Secretary-Treasurer, one year term, C. G. Jaeger, ('21), Columbia, Mo.

### ARKANSAS

C. B. Wiggans, B.S. in Ag. '22, Gamma Sigma, Sigma Xi, assistant professor of horticulture, College of Agriculture, University of Arkansas, was elected president of the University of Missouri alumni association of Fayetteville at the annual meeting on

Dec. 4. Mrs. Henry Pepper was elected secretary.

A dutch treat furnished the basis of several after dinner talks. Each member present gave his name, occupation, and other biographical information. Gus M. Oehm, retiring president, reviewed the scholastic accomplishments of the University of Missouri for the past year. Miss Martha Reid, dean of women at the University of Arkansas, gave a vivid account of the ceremonies incident to the dedication of the Memorial Tower and Memorial Stadium on Homecoming Day, November 20.

Those attending were Mr. and Mrs. C. L. Price, J. Keith, H. K. Thatcher, C. B. Wiggans, Mr. and Mrs. L. Sprasagen, Mr. and Mrs. Harold T. Barr, Miss Martha Reid, Mrs. Bruce Holcomb, Mrs. Jay Fullbright, Mr. and Mrs. Henry Pepper, Mr. and Mrs. C. E. Normand, Mr. and Mrs. Gus M. Oehm and G. H. Banks.

### MICHIGAN

The Tiger growled in Michigan and 25 faithful alumni responded when a fall meeting of the Michigan Branch of the Missouri Alumni Association was held at the Palestine Lodge in Detroit on December 11.

E. C. Robinson, president of the Michigan branch, acted as chairman and toastmaster. After a five course dinner had been dispensed with the chairman made his "presidential address." Arthur L. Baermann was then called upon to give an account of the 1926 Homecoming. Mr. Baermann, B.J. '22, was the only alumnus present who had returned to Columbia to see the Tiger defeat the Jayhawk this year. His talk was very interesting to those of us who were not so fortunate in attending the Homecoming activities. Following his talk practically every member present gave a short talk about recent visits to Columbia or about their experiences while in school.

Letters of regret were read from J. G. Wells of Marquette, John Wilson of Shurgis, O. E. Reed of East Lansing, a past president of the Michigan Alumni, Mrs. E. H. Lathrop (formerly Ruth Searcy) and P. A. Tanner of Jackson; and Dr. and Mrs. A. J. McCulloch of Albion.

Future activities of the Michigan branch were discussed. Many felt that a luncheon or dinner at some convenient place at regular intervals would be a fine thing. It was thought that many alumni out over the state could attend these if they knew the time and place. Mr. Robinson appointed G. E. Edscorn, Eng. '24 and Hal Hursh, B.S. in Ag. '14 on the entertainment committee to look after this.

Those attending the dinner were: Dr. M. D. Silver, '01; Sidney Levy, '14;

Pauline Klass Levy, '14; Dr. Jno. M. Carter, '15; Mary Parker Carter, '15; J. E. Pittman, '19 and '20; Count Harvey, '12; W. W. Burden, '12; Ethel Denny Burden, '12; Ethel Denny Burden, '12; Ben Colman, '16; Webster C. McDonald, '14; J. Harold Hursh, '14; Arthur L. Baermann, '22; Harry E. Longmire, '24; Mr. and Mrs. Raymond Collings, '24; Mr. and Mrs. P. J. Reese, '16; Mrs. Geo. E. Edscorn, '23; Geo. E. Edscorn, '24; Mrs. D. M. McSpadden (formerly Mildred Fite) '24; D. M. McSpadden, '21; E. C. Robinson, '12 and Mrs. Robinson and daughter, Mrs. H. F. Bennett (formerly Ruby Henry) '13 and Mr. Bennett and a graduate of the University of Michigan who played on the same football team with our former coach, Henry "Indian" F. Schulte.

All of those present live in Detroit or nearby suburbs. While invitations were sent to all alumni in the state none found it possible to attend. We hope to have some of them at our annual meeting next spring.

After being led in a few old time yells and singing the old Alma Mater everyone went away happy that they had come and renewed old acquaintances. More gatherings of this nature are sure to follow.

### TULSA

Walter O'Bannon, B.S. in C.E. '10, has been elected President and Miss Ella Wyatt, B.J. '21, secretary, of the Tulsa Alumni Association, at their annual banquet meeting held on Tulsa College Night, according to an announcement just received from J. A. Whitlow, B.S. in C.E. '10, retiring president of the organization.

College Night at Tulsa is a big affair in University circles and Missouri cashed in to a big advantage, by winning first honors for the Tiger stunt, managed by Harold Moles—and think of this, my friends—Merle C. Prunty acted as cheer leader for the Jayhawks to the extent that Kansas was awarded first prize for their yelling. Now this same fellow, Prunty, is the husband of Grace Moulton, B.S. in Ed. '13!!!

### Columbia Gains 50% in Population.

L. E. Slate, secretary of the Commercial Club, has announced that the population of Columbia, beginning January 1, will be approximately 15,588, according to a recent survey based upon statistics from local sources. The figures for the close of 1919 show the population was 10,392.

### A Special Train for Stephens College.

Gorge R. Hecker, of the M. K. & T., has arranged for a special train for a trip of the Stephens College students to Chicago on January 1, 1927, 500 of the 568 girls have signed up to go.

ALUMNI OF THE SCHOOL  
OF LAW

Earl F. Nelson, A.B. '04, LL. B. '05, Sigma Xi, Phi Delta Phi, QEBH, Phi Beta Kappa, Attorney of St. Louis, member of the firm of Wilfley, Williams, McIntyre & Nelson, Boatmen's Bank Bldg., was elected President of the Law Alumni Association, at their regular annual meeting in the law building on Homecoming morning. Other officers are: Ray V. Lucas, Benton, Mo., first vice-president; Moody Mansur, Richmond, second vice-president; Henry



Earl F. Nelson, Attorney of St. Louis, member of the firm of Wilfley, Williams, McIntyre & Nelson, newly elected President of the Law Alumni Association.

Conrad, Kansas City, third vice-president; James A. Potter, Jefferson City, fourth vice-president; Spencer F. Harris, Kansas City, fifth vice-president. Ben Ely, Jr., Hannibal, was re-elected secretary-treasurer and Ross E. Feaster, Windsor, and Chas. J. (Jack) Murray, were elected to the Council for a term of five years.

President Nelson announced that James S. Rollins has heretofore been duly elected and active will continue to act as a director on the Board of Directors of the General Alumni Association, representing the Law Alumni Association.

J. P. McBaine, Dean of the School of Law, was the principal speaker and told the alumni about the plans for the completion of Lee Harry Tate Hall. He stated that the new law building would be ready for occupancy next fall. The association voted to ask the incoming of-

ficers to cooperate with the faculty in making arrangements to secure appropriations from the legislature to equip the building. A suggestion was approved that a report of the law directory committee be held over until next year.

A motion was adopted to present a suggestion to the State Bar Association that the 1927 meeting be held in Columbia, in connection with the dedication of Lee Harry Tate Hall.

## ATTENTION! AG ALUMNI

The 4th annual meeting of the Alumni Association of the College of Agriculture will be held at a dinner meeting 5:45 p.m. on Thursday, January twentieth, Farmers' Week, according to an announcement by Secretary P. F. Schowengerdt. The place of the dinner will be announced during Farmers' Week at the meetings and be placed on the bulletin boards. Important business will be transacted at this meeting. Every Ag alumnus and former student and short course man is urged to be present. Don't fail.

Election of officers.  
Informal.

The Ag alumni officers are: President, W. R. Hechler, Dalton, first vice-president, Ben F. Geisert, Washington; second vice-president, E. A. Ikenberry, Independence; third vice-president, W. M. Regan, Davis, Calif.; fourth vice-president, F. L. Bentley, State College, Pa; fifth vice-president, R. M. Green, Manhattan, Kans.; representative on alumni association Board of Directors, T. J. Talbert, Columbia; secretary, P. F. Schowengerdt, Columbia; councilman, J. W. Burch, Columbia; associate editor of College Farmer, Sam B. Shirky, Columbia.

FARMERS' WEEK! JAN.  
17-21!! BE HERE!

## Board of Visitors Holds Meeting.

The University Board of Visitors held its annual meeting in the office of Secretary Leslie Cowan on November 19, for the purpose of investigating the needs for the University for its report to the Governor. The members of the Board are: Chas. I. Baird, chairman, Kansas City; Alex E. Douglass, Kansas City, W. P. Brinkley, Linneus, John F. Case, Wright City; and Charles E. Prettyman, Jr., Neosho.

## Elected President of Probate Judges.

Judge H. A. (Jack) Collier, Sigma Nu, probate judge of Boone county, was elected President of the probate judges association of Missouri at the annual

meeting held in St. Louis, December 14.

Thad B. Hickman, county clerk of Boone County, was recently elected President of the county clerks association of Missouri and Joe T. Harris, circuit clerk of Boone County, was recently elected President of the circuit clerks association of Missouri.

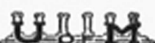
New President of the "M" Men's  
Association.

C. P. (Cap) Lemire, LL.B. '12, recently elected to the Mo. Legislature, attorney, 1115 Commerce Bldg., Kansas City, Pi. Kappa Alpha, halfback of the teams of '10, '11 and '12, captain of the latter year, was elected president of the M. men's association at their annual meeting held at Harris' on the morning of Homecoming Day. Dr. Edwin Lee Miller, A.B. '08, 800 Rialto Bldg., was elected vice-president and Sam B. Shirky of the College of Agriculture, was re-elected secretary-treasurer. Shannon C. Douglass, immediate past president, presided. Mr. Douglass chaperoned 52 high school students from Kansas City, who came to Columbia in motor busses as the guests of the Kansas City Alumni Association. Short talks were made by a host of the old M. men at the meeting. It was decided upon the suggestion of President Douglass that the M men purchase a pitcher, to remain in the possession of the M men or the K men of Kansas, the year following the annual football game, the winner to retain possession of the pitcher. In case of a tie the group holding the pitcher would retain possession of it.

J. Donald Ferguson, B.J. '15, an editorial writer on The Milwaukee Journal, has been promoted to chief editorial writer and Dale Wilson, B.J. '16, has been made head of the feature exchange department of that paper.

# The Missouri Alumnus

Established 1912



R. L. (BOB) HILL, Editor and Manager

## Officers Of The University Of Missouri Alumni Association.

Frank B. Rollins, LL. B. '11, Columbia, President. George C. Willson, Jr., A. B. '11, LL. B. '14, St. Louis, First Vice-President. Miss Elsa Bradley, A. B. '24, Kansas City, Mo., Second Vice-President. R. L. (Bob) Hill, B. S. in Ag. '12, M. S. '13, Columbia, Secretary. S. F. Conley, A. B. '90, Columbia, Treasurer.

Board of Directors composed of representatives of Alumni Associations of Divisions in the University; Agriculture, T. J. Talbert, Columbia, Mo.; Engineering, L. M. Defoe, Columbia; Law, Jas. Sydney Rollins, Columbia; Education, F. H. Barbee, Kansas City; Arts, Guy V. Head, Columbia; Journalism, Frank R. Rucker, Independence; Business and Public Administration, Royal D. M. Bauer, St. Louis; Medicine, Dr. A. W. Kampschmidt, Columbia; Graduate, Ralph Watkins, Columbia.

Subscription to the Alumnus is \$3 a year. Life Subscription is \$45.

Changes of address should be received by the Missouri Alumnus before the fifteenth of the month to insure prompt delivery of the magazine for that month.

Checks, drafts and money orders should be made payable to the Missouri Alumnus and all business correspondence should be so addressed. Address all news items to the Managing Editor of the Missouri Alumnus, 114 Jesse Hall, Columbia, Mo.

Should a subscriber wish to discontinue his subscription, notice to that effect should be given before its expiration. Otherwise it is assumed that a continuance of subscription is desired.

Member of Alumni Magazines Associated.

The Alumni will no doubt be pleased to know that the ROTC units which were established here at the request of the University Authorities (Infantry Unit in 1917 and the Field Artillery Unit in 1919) are ably carrying on the fine traditions bequeathed to them by the Alumni who made up the University of Missouri Corps of Cadets before the ROTC was introduced.

As in the old days, the students taking military instruction respond as a unit to every request made of them to participate in University exercises and ceremonies. This fall they participated in the ceremonies incident to the visit of the Japanese Ambassador and also in the ceremonies for the dedication of the Memorial Tower and the Memorial Stadium, and that they are worthy successors of the old grads may be seen from the following letters received by Colonel Kerth who is the "P.M.S.&T."

Dr. Brooks, President of the University wrote:—

"I wish to express to the R.O.T.C. Unit both my official and my personal appreciation of the very excellent services rendered to the University at the time of the Dedication of the Japanese Lantern and at the time of the Dedication of the Memorial Tower.

I am sure it would do the boys a great deal of good to hear the many fine compliments about them that have come to my ears."

Mr. Frank B. Rollins, Chairman,

Memorial Dedication Committee, wrote:—

"The Dedication Committee is at a complete loss to know how to thank you for the magnificent way in which you put the ceremonies through on November 20th. From beginning to end there was not a single hitch. I never saw a greater demonstration of efficiency. It was our desire from the beginning to give the ceremonies a military aspect and through your splendid advice, this was certainly carried out.

I express to you not only my own appreciation but that of the Dedication Committee and all others connected with our ceremonies and assure you that we are very deeply thankful to you for your splendid cooperation."

Dean Walter Williams, referring to the ceremonies incident to the visit of the Japanese Ambassador November wrote:—

"Permit me to express my thanks to you for the admirable manner in which the exercises of yesterday, under your direction, were carried off. It was an impressive spectacle and was conducted in a way that reflects credit upon your administration. With appreciation and thanks."

Old Mizzou has always been proud of its Corps of Cadets and it will be a pleasure to all old grads to read the above letters evidencing the present high state of efficiency, and morale of the corps.

The officers of local alumni associations all over the United States are urged to get in touch with the managers of the designated hotels in their respective cities, advertising in the Alumnus, to the end that there shall be quickly established a personal and friendly contact. The officers of the Alumni Associations can be of tremendous help in this matter.

The members of The Alumnus Staff send to each alumnus and former student their sincere wishes for a very merry Christmas and a happy and successful new year.

We need the Union.

There were nearly 25,000 persons in Columbia on Homecoming Day; more than twice as many alumni were back than at any previous time. Everything possible was done to provide entertainment for them. Everything possible was done for their comfort and convenience. It was the greatest day in the history of alumni activities. Columbia folk, townspeople, faculty, students, and alumni had planned to greet the visiting alumni. The visitors had planned on meeting other visitors. It was Homecoming! Why not seek all old friends, teachers, and class mates? Fine! But where to meet and visit with them?

Right here is where the editorial part of this article comes in. There is no meeting or visiting place on the campus. Alumni and student headquarters just aren't. We need the Union to provide an adequate headquarters for students, alumni and parents, with plenty of room to accommodate all where we can all meet, greet and visit.

Here's how it can be done. Every memorial subscriber who is in arrears

on payments must pay up to date at once in order to pay off the indebtedness on the Tower and then make all future payment promptly and there will be no difficulty in letting contracts for the Union. Let us all pay up what we owe on our Memorial subscriptions by January 1. This is our duty and our obligation.

We need the Union.

The formal dedication of the Memorial Tower and Memorial Stadium brought compliments from hundreds for those who have been actively interested in the building of these two projects. It was good to hear from all sources complimentary reference to the work of the University architects, Messrs. Jamieson and Spearl, for the beauty of the Memorial Tower and the Memorial Stadium. There was equal praise for the Memorial Tower contractors, the Simon Construction Company and the Stadium contractors, H. H. Carrothers, Inc. To all of them, our congratulations!

The Alumni of the University are delighted to know that the permanent headquarters of the Missouri State Teachers' Association are to be established in Columbia.

The Columbia Commercial Club gave to the Missouri State Teachers' Association the J. G. Babb lot on South Sixth Street, across from the Parker Memorial Hospital. The construction of the headquarters of the Association will probably start at once.

The Missouri County Agents are to be commended for their thoughtfulness in presenting to the University a bronze tablet for Waters Hall, in respectful memory of Henry Jackson Waters.

## HERE'S A GOOD EXCUSE.

"I am glad that the soldier memorial at Columbia is a beautiful tower and that sentiment had more to do with the planning of the tower than utility," says Solomon Wise in the Independence Examiner. "I am getting pretty tired of the practical. We are entirely too practical. I like something once in a while, that is not worth a thing as far as actual utility is concerned and fills the eye with beauty or the soul with sentiment. I suppose that is why I like the pretty girls in pretty clothes."—Kansas City Star.

## M. U.'S TRIBUTE TO ITS WAR HEROES

The University of Missouri has paid eloquent tribute to those of its students who gave their lives in the World War. The Memorial Tower and the Memorial Stadium, dedicated with impressive ceremonies last Saturday, have the rounded merit of fitness of design, purpose and place. The stadium, so intimately linked with student activities and spirit, with the making of manly men, has its utilitarian values as well as its sentimental



aspects. The tower, symbolic, artistic and imposing, an embodiment of architectural beauty and spiritual significance, is the more poetic expression of feeling toward those whose names are inscribed on its enduring tablets.

These expressive structures are not tributes alone to the silent boys who once answered the roll calls at old M. U.; they are consolations to the fathers and mothers and other kindred who saw these boys go forth for their country; they are unconscious testimonials to the students, alumni and faculty and other friends of the university, whose contributions made these memorials possible.—Kansas City Star editorial, November 22, 1926.

### HOME COMING AT COLUMBIA.

Saturday's "Homecoming Day," always a great day at Missouri University, had an importance and interest transcending that of any other that preceded it, and probably of any in years to come. It was a great day in the history of our State University. A 15-0 victory over Kansas helped to make it so, but it was further made memorable by a far more significant event—the dedication of the two memorials to the university's war dead. One of these is a Gothic tower, costing \$250,000, which is to be the central unit of a \$500,000 Student Union Building; the other is a \$300,000 stadium.

This tower and this stadium were dedicated to 117 boys, students at the university, whose homecoming from the war, and whose presence at this homecoming celebration, were rendered impossible by death in the service. They were built by the subscriptions of more than 9000 alumni, students and friends of the university, obtained in a campaign led by Dr. J. C. Jones, president emeritus of the institution.

A feature of deep solemnity, and a more eloquent tribute than any uttered by the distinguished men who participated in the dedication, was the tolling 117 times of the bell in ivy-covered Switzer Hall, in which a number of the war dead attended classes. Surely the thousands who heard it, realizing that each note represented the life of a brave youth who had left the campus to die on the battlefield, must have felt great satisfaction over the fact that the memorials have been erected in their honor.

And much honor and appreciation are also due to Dr. Jones for his tireless work in making these memorials, not a wish, nor a plan, but a beautiful reality. For more than forty years he has served Missouri University, and when he retired from the presidency of the institution in 1923 he looked forward to rest and leisure. Instead, however, he soon accepted a new opportunity to continue his work for the university, which was already so complete, and thus add a crowning achievement to a life of service that has earned him the admiration, re-

spect and affection of tens of thousands of students.—St. Louis Globe-Democrat editorial of November 22, 1926.

Much credit is due the 1927 Homecoming Committee for the greatest homecoming in the history of the University. Robert A. Campbell was Chairman of the Student Committee assisted by Arthur E. Indermark, Mary Frances Hunt, Helen W. Baird, Milton V. Thompson, John W. McCune, the Student President, Jean Paul Bradshaw, and George Schmick.

Dr. Isidor Loeb, formerly acting President of the University, now Dean of the School of Business and Public Administration, Washington University, addressed a meeting of the Illinois Manufacturer's Cost Club, held in St. Louis, December 17, on the subject, "Modern Tendencies in Business Administration."



Louis N. Thompson, B.S. in Eng. '18, and Mrs. Thompson, formerly Elva Gertrude Brobst, of Philadelphia, announce the birth of a son, David Fremont, on November 9.

Leland S. (Kleiny) Kleinschmidt, B.S. in Ag. '15, Gamma Sigma Delta, and Mrs. Kleinschmidt, formerly Margaret Edna Long, a former student, 2211 Marion Street, St. Joseph, Mo., announce the birth of a daughter, Lois Imogene, on November 9.

Herbert Blumer, A.B. '21, A.M. '22, former Tiger athlete, and Mrs. Blumer, formerly Marguerite Barnett, B.J. '22, A.B. '23, 6233 Blackstone Avenue, Chicago, announce the birth of a daughter, Katherine, on November 7.

Arthur C. Jones, B.S. in Ag. '16, Delta Tau Delta, Abstractor with the Kansas City Title and Trust Co., and Mrs. Jones, announce the birth of a son, Arthur Hamilton Jones, on November 25 and plan to have him enrolled in the University about 1944. They also have one daughter, Jane Breeden Jones, age 2 1-2 years.

Russell C. Jordan, '23-'24, and Mrs. Jordan, formerly Lois Van Evera, of Kansas City, announce the arrival of a son, Russell, Jr., on October 28.

Herbert Bunker, A.B. '23, Phi Beta Kappa, Alpha Pi Zeta, Kappa Sigma, Mystical Seven, famous Tiger athlete, and Mrs. Bunker, formerly Mary M. Hudson, A.B. '23, announce the arrival of a son, Herbert, Jr., on November 14. Mr. Bunker is with the Missouri State Life Insurance Co., Kansas City.

Mrs. Paul H. Morton, formerly Elizabeth Ann Dale, A.B. & B.S. '13, and Mr. Morton, of Pacific Grove, Cal., announce the arrival of a daughter, Elizabeth Ann, on September 16.

Willard F. Wilkinson, B.S. in B. & P.A. '22, and Mrs. Wilkinson, formerly Jessie Brenizer, '19-'23, announce the arrival of a daughter, Jessie Marilyn, on November 17, at their home, 6336 Baltimore, Kansas City.

John H. Patrick, A.B. & B.S. in Ed. '12, Acacia, Phi Delta Phi, auditor, U. S. Gov't. Income Tax, Kansas City, and Mrs. Patrick, announce the birth of a son, Robert Riley, on November 21.

Mr. Patrick originated the idea of a life subscription to the Missouri Alumnus, which has met with a hearty response. He received the degree of LL.B. and LL.M. from George Washington and B.C.S. degree from the Washington School of Accountancy. He volunteered as a private in the world war and came back as a first lieutenant, 29th engineers, after two years of service.

Lester Bascom (Bottles) Wikoff, A.B. & B.S. in Ed. '15, athletic director and quartermaster, Wentworth Military Academy, Lexington, Mo., and Mrs. Wikoff, formerly Margaret Boatsman of Tecumseh, Neb., a graduate of Central College, announce the birth of a son, James Lester, on October 17. Mr. Wikoff was a member of the football teams of '13-'14 and the baseball teams of '12-'13 and is active in alumni affairs in Lafayette county.

Mrs. George W. Harney, formerly Mary L. Haw, '24, and Mr. Harney, announce the birth of a daughter, Betty Nell, on November 17, at their home, 407 S. Underhill, Peoria, Ill. Mrs. Harney's brother, Joe L., formerly attended the University and another brother, Marvin Haw, Jr., is enrolled now.

James L. MacKay, B.S. in Ed. '20, M.A. '24, instructor in the Roosevelt High School, St. Louis, and Mrs. MacKay, formerly Mabel G. Crouch, B.S. in Ed. '18, announce the arrival of a son, Edwin James, on October 25, at their home, 108 W. Monroe, Kirkwood, Mo. They have one other son, Billy, born January 8, 1923.

Mr. MacKay is treasurer of the St. Louis Alumni Association and has been active in alumni affairs since leaving school.

Clay W. Lewis, '08-'14, Acacia, Tau Beta Pi, sales manager of the Ft. Scott (Kan.) Hydraulic Cement Co., and Mrs. Lewis, formerly Dorothy Jones, B.S. in Ed. '14, announce the birth of a third child, on September 5. Clay was here for Homecoming and announced that this was the third "red-headed baby."

**M. U. Alumnus Makes Good****In Insurance Business**

A. C. (Tex) Bayless, former student of the School of Journalism, '17, business manager of the Daily Missourian, Phi Gamma Delta, Alpha Delta Sigma, Tri Chi, QEBH, general agent for the Southland Life Insurance Co., Houston,



**A. C. (Tex) Bayless**

Tex., who is the subject of a story in the September issue of the Insurance magazine, entitled, "Formula of a Million Dollar writer." In part the story states:

"Bayless came to The Southland Life with no previous life insurance training but with the firm conviction that advertising could be used with effect in any business in the world.

Bayless had but \$300 and an office when he opened up at Houston. He did not know a soul in the city. But inside of a month, as the result of that \$300 and every penny he could get in from his commissions folks in Houston began asking, "Who is this fellow, Tex Bayless?" They do not ask that question now, for practically everyone in Houston knows who Tex Bayless is and what his profession is, for the city is dotted with "Tex" Bayless billboards that tell the story of life insurance and Bayless service.

Fighting an uphill battle, for it took the advertising some time to take effect, Bayless kept plugging away until he finally had a good year with some \$600,000 of business written. That amount was increased the next year and the next and last year reached the rather unusual figure of \$1,775,000, personal business written with no industrial and no group included.

Bayless has but one maxim for success:

"Work and keep on working. Adver-

tise and keep on advertising. See the people and keep on seeing people. Then you can't help but succeed in the life insurance business if you have one iota of ability as an underwriter."

**Alumni Secretaries Hold Conference**

The alumni secretaries of the schools in the Missouri Valley Conference held an informal conference at the University Club in Kansas City at the time of the Missouri Valley indoor meet. The following attended the meeting: Harold Holtz, Nebraska; Fred Ellsworth, Kansas; Richard H. Cloyd, Oklahoma; Ralph L. Foster, Kansas State Agricultural College; H. E. Pride, Iowa State and Robt. L. Finch, Drake.

**Board of Curators Meets December 4.**

The executive committee of the Board of Curators met at St. Louis on December 4. Those present were F. M. McDavid, Springfield; H. J. Blanton, Paris; President Stratton D. Brooks, and Secretary Leslie Cowan.

Dr. James Harvey Rogers, professor of economics at the University of Missouri, has been granted leave of absence and will accept an invitation from a group of professors of Columbia University to co-operate with them in a special investigation of economic conditions in France.

Professor Rogers will leave the university at the Easter vacation and from that time until the fall opening of the school he will be engaged in direct investigation of the situation abroad.

The invitation is a special honor and was sent him because he is one of the few men in America who has specialized in the particular work to be undertaken during the investigation.

Extension classes for the university were established by the board at Joplin, Houston, Ianta, Warrenton and Armstrong as part of its business yesterday.

The board accepted 51 hand-carved letter openers, made from a walnut tree formerly standing on the site of the new stadium, with the understanding that one of the letter openers shall be given to the captain of the football squad this year and for each succeeding year for the next fifty years. The letter openers were presented by B. E. Miller of Columbia.

Margaret C. Hessler was appointed assistant professor of home economics, beginning the second semester. Miss Hessler is just completing her work for the doctorate at Columbia University. She has taught in the University of Washington, University of Texas, and in Teachers' College, Columbia University.

The following agricultural extension agents were appointed by the board: C. W. Campbell, Pike County; J. R. Hansen, St. Louis County; Theodore F. Yost, Bates County, and George L. Hawn, Stone, Taney and Christian counties.

The board sponsored the appointment

of Frank J. McCaslin as a member of the Committee on Intercollegiate Athletics by the Kansas City Alumni of the University. The appointment will become effective January 1.

A resolution was adopted that no tablet, picture, relics, or other material or equipment should be placed in the Memorial Tower without the approval of the board.

**New Entrance Plan Adopted**

Future students will be admitted to the University on twelve units, the work of the three-year senior high school rather than on fifteen units, the work of the standard four-year high school. Students entering from standard four-year high school will be required to offer twelve units from the second, third, and fourth years of their high school work, according to S. Woodson Canada, registrar.

This plan was adopted by the University faculty to meet the changing situation in the present high school work. In St. Louis, Kansas City, Sedalia, Joplin, Hannibal, St. Joseph, Jefferson City, Carthage, and Columbia junior-senior high schools have already been established, or are in the process of being established. A number of other communities have them under consideration. Some time ago the North-Central Association of Colleges and Secondary Schools recommended that colleges and universities in this territory restate their entrance requirements in terms of the senior high school.

Educators in secondary schools believe that the junior-senior high school plan will enable them to better prepare those who intend to enter college. They consider the junior college the most satisfactory place to give training in their life work, to those who do not intend to go to college.

It is thought that as many as eight of the twelve units required for entrance will be prescribed by the divisions of the university to which freshmen are admitted. The faculty of these divisions will determine within the next few weeks what particular subjects will be required for admission to each particular division.

Earl F. Nelson, Attorney, Wm. T. Nardin, of the Pet Milk Company, and Eddie Klein, Insurance, St. Louis, visited the University on November 3. They drove up in Mr. Nelson's car. Mr. Nelson and Mr. Nardin came in the interest of the QEBH organization plans for painting the portrait of Dr. J. C. Jones and Prof. L. M. Defoe.

Clyde Homer Faris, B.S. in M.E., '05, a designer in the office of the Mechanical Engineer, Norfolk & Western Railway, Roanoke, Va., residence, 304 Winona Avenue. He married Jennie Helphenstine of Indianapolis, Ind., in 1908. They have two sons and one daughter.



Irene Couch, '22-'24, will be married on December 25 to Maurice E. Hurst, '24, of Muskogee, Okla. Mr. Hurst is teaching in the Central High School at Muskogee.

Kathryn Bradford Price, '24, of Glasgow, Mo., Pi Beta Phi, was married last month to Harold Spicer of Harrisonville. They are at home at 918 Armour Boulevard, Kansas City.

Julia E. Pickard, '24-'25, of Kansas City, has announced her engagement to Howard W. Gnau, of Detroit, Mich. Mr. Gnau was graduated from Harvard in 1924. The wedding will take place in April.

Kathleen Musson, '24, of Norborne, Mo., has announced her engagement to Dr. Walter W. Armstrong of Chicago.

Anna Rhodes, B.S. in Ed '21, Oklahoma Agricultural College, Stillwater, was married on November 25 to W. E. Jackson. They are at home at 411 Monroe Street, Stillwater.

William Gray, '19-'24, Alpha Tau Omega, Palmyra, Mo., and Miss Muriel Ray of Chicago, were married recently in Ann Arbor, Mich. Both Mr. and Mrs. Gray are students in the University of Michigan.

Roscoe V. Hill, B.S. in Ag. '23, former football star, St. Louis, was married on November 20 to Mrs. Margaret Hill Bender. They are at home at 5455 Delmar, St. Louis.

Alby Gerald Anderson, B.S. in Ag. '24, A.M. '25, Agricultural Representative, St. Louis San Francisco Railway Co., Blytheville, Ark., and Miss Martha Griest, of Columbia, were married the latter part of November. Mr. Anderson is a member of Sigma Phi Epsilon, Gamma Sigma Delta and Sigma Xi.

Haseltine Fry, B.S. in Ed. '18, of Portland, Ore., and Carl Austin Taylor, of Southern Oregon, were married in December.

Fritzie Voss, '24, Tri Delta, and A. C. Lewis, Jr. of Shreveport, La., were married on October 21.

Francis X Moore, B.J. '23, Phi Kappa, and E. Jacqueline Bauer, both of St. Louis, were married on October 30. Mr. Moore is with the Bell Telephone Co., in St. Louis, where they will make their home.

Monia V. Cook, A.B. '22, B.S. in Ed. '23, married on August 11 to J. Paul Morris, of Braymer, Mo., a graduate of the State Teachers' College, Warrensburg. They are at home at Braymer, where Mr. Morris is principal of the High School and Mrs. Morris is teaching mathematics.

Miss Aileen M. Case, former student of the School of Journalism of Wright City, Mo., was married on December 4 to Arthur C. Heimerdinger, a graduate of the Engineering Department, University of Michigan, now with the Trucson Steel Co., Chicago, where they will make their home. Mrs. Heimerdinger is the daughter of Mr. and Mrs.



Miss Aileen M. Case.

John F. Case of Wright City. Mr. Case is president of the Missouri State Board of Agriculture, and a member of the University Board of Visitors, and editor of the Missouri Ruralist. Mrs. Heimerdinger was chosen as St. Pat's Queen in 1923. Since leaving the University she has been engaged in feature and fiction writing for magazines.

Bina H. Slaughter, B.S. in Ag. '22, of the University Home Economics Department, and Cecil Davis, B.S. in Ag. '26, instructor in entomology at the University, member of Alpha Gamma Rho and Gamma Alpha, have announced their engagement.

Bertha Lee Loudermilk, B.S. in Ed. '19, was married recently to E. C. Mallory, Jr., 504 Marine Street, Boulder, Colo.

Edith E. (Jack) Campbell, B.J. '26, Tri Delta, Gamma Alpha Chi, Phi Theta Kappa, who received the degree of A.A. from William Woods at Fulton, in 1924, is now living at Kirksville, Mo., was married on December 16 to Kenneth Edward Schurr, Saginaw, Mich.

Phoebe Louise Wright, A.B. '25, Kappa, daughter of Mr. and Mrs. James Harvey Wright of Valley Park, Mo., was married to Horace Archer Bradt on November 26 at Webster Groves, Mo. Mrs. Bradt was one of the most prominent students in the University and was active in all student affairs, especially in the campaigns for the Memorial Union and Stadium. She spent last summer in Europe. Miss Wright's sister, Mary Elizabeth, is a student in the University.



Dr. C. C. Willson, father of George C. and Harry Willson, of St. Louis, and Orville Willson of Kansas City, died at his home in Nevada, Mo., on November 28, after an illness of one week. Dr. Willson was 74 years old, had practiced medicine and surgery for more than 40 years and was prominent in public affairs.

Mrs. John M. Chamberlin, formerly Ada Frances Blakeslee, of Savannah, Mo., Alpha Sigma Alpha, Edwina Blakeslee, born April 28, 1917, at Bolivar, Delany, born on December 2, 1918, and John, born in Los Angeles, on February 13, 1922, wife and three children of John Monroe Chamberlin, LL.B. '10, Acacia, general attorney for The Elliott-Horn Co., Investment Bankers, of Los Angeles, all died in Los Angeles on October 15, 1926, of Carbon Monoxide Poisoning. Mr. Chamberlin is a street bond attorney, vice-president Harbor Housing Corporation, president and chief counsel of California Street Bond Co., and President of the California Street Bond Dealers Association. His office is in the Pacific Finance Bldg., 623 S. Hope Street, Los Angeles.

George E. Luke, age 34 years, B.S. in Eng. '16, Gregory Scholarship '15, Tau Beta Pi, Eta Kappa Nu, QEBH, Head of the Insulation section of the Westinghouse Electric & Mfg. Co., research department, E. Pittsburg, Pa., was killed in an automobile accident on the night of November 28, according to word received from John Calvert, secretary of the Pittsburg Alumni Association and Ross M. Bickley. Mr. Luke has been very prominent in alumni affairs ever since leaving

(Continued on Page 160)

The Memorial Tower was dedicated on Homecoming morning, November 20, 1926. The photograph on the front cover of this issue of the *Alumnus* gives an idea of the setting at the Tower. Prof. Thos. S. Barclay, Chairman of the Committee on Public Affairs, lead the dedication procession from Jesse Hall, through Memorial Way to the Memorial Tower, as the Governor's salute was fired by the R.O.T.C., and the old University bell was sounded once for each of the 117 names engraved on the Honor Roll. President Stratton D. Brooks presided at the dedication ceremonies. America was sung. The Rev. H. L. Reeder, of Webster Groves, Mo., chaplain of the 35th Division, delivered the invocation. The Glee Clubs of the University of Kansas and the University of Missouri sung, "Now let every Tongue." United States Senator Rice W. Means, National Commander of the Spanish-American War Veterans, spoke on "The Veterans."

The Honorable Sam A. Baker, Governor of the State of Missouri, delivered an address entitled, "The State." Forrest C. Donnell, A.B. '04, LL. B. '07, Attorney of St. Louis, spoke on "The Alumni."

The joint Glee Clubs sang, "Hymns of Thanksgiving."

John Pickard, representing the Memorial Committee of Nine, delivered the dedication address. J. C. Jones, Director of the Memorial Union and Stadium Campaign, read the 117 names on the Honor Roll and unveiled the Honor Roll tablets, at the conclusion of which, Joseph S. Simpich of St. Louis, presented a gorgeous wreath on behalf of Mystical Seven, senior honorary fraternity. At the completion of "Taps" President Brooks, said:

"In behalf of the Board of Curators and by virtue of the authority vested in me, I now confer upon our honored dead this Tower as a diploma carved in stone, more lasting than those of parchment that the University customarily gives."

Frank B. Rollins, President of the Alumni Association, delivered the address of presentation and officially presented the Memorial Tower on behalf of the alumni, students, members of the faculty and friends of the University, to the University of Missouri.

Mercer Arnold, A.B. '00, LL. B. '02, attorney of Joplin, member of the Board of Curators, accepted the Tower for the Board. The singing of "Old Missouri" completed the dedication ceremony.

The Memorial Dedication Committee gave a luncheon in the Women's building in honor of the Memorial Dedication guests. Prof. Barclay was in charge.

The dedication ceremonies of the Memorial Stadium were held at the Stadium a few minutes before the start of the Kansas-Missouri football game. Major Fred T. Cruse was in charge. The bands of the two schools assembled on the field to join in playing "America." Frank B. Rollins, President of the Alumni Association, officially presented the Memorial Stadium to the University, which was accepted by Mercer Arnold, member of the Board of Curators. A gigantic bomb burst over the field from which 117 flags floated, one for each name on the Honor Roll.

And after the football game, the 1926 Homecoming was an event of history.

It is the duty of the Memorial Committee of Nine to collect payments on the Memorial Union and Stadium subscriptions. We must pay at once our obligations past due, and collect promptly on all payments as they become due in the future, in order that we may complete the two wings of the Memorial Union. We must have the unstinted support of every subscriber.

J. C. JONES, *Campaign Director*  
FRANK B. ROLLINS  
S. FRANK CONLEY  
E. SYDNEY STEPHENS

WALTER MILLER  
JOHN PICKARD  
L. M. DEFOE

The importance to the University of the 1926 Homecoming may best be appreciated by reading the following expression by President Stratton D. Brooks:

*The 1926 Homecoming opens a new era in the history of the University, in which the love and affection of our thousands of alumni will be more often expressed in definite projects for the upbuilding of the physical plant of the University.*

*Stratton D. Brooks*  
PRESIDENT OF THE UNIVERSITY

From those persons who did not, but should have received invitations, the Committee asks indulgence. Doubtless there are many of these. Please pardon us, for in sending out more than 15,000 invitations there were bound to be many clerical errors. If any person wants one of the Memorial Dedication invitations or programs for a souvenir, address:

The Memorial Dedication Committee, 217 Jesse Hall.

FRANK B. ROLLINS, *Chairman* C. L. BREWER  
E. S. STEPHENS JOHN PICKARD

We regret that we do not have space to publish in full all of the wonderfully fine Memorial dedication addresses.

To the Alumni and former students:

I want to give every one of you an opportunity to subscribe to the Memorial Union and Stadium. I find that there are a good many of you scattered over the country who have never been personally solicited. I present this opportunity to you to indicate my strong personal desire to have your name on the list of subscribers. I would be delighted if you could fill out the subscription blank below for a Life Membership. The Memorial Tower and the Memorial Stadium are worthy of the support of every alumnus. I shall be glad to receive your subscription before January 1.

Very truly yours,

J. C. JONES



University of Missouri  
MEMORIAL UNION AND  
STADIUM

Subscription Blank

*"A Life Membership for Every  
Alumnus"*



I hereby subscribe \$100.00 toward the UNIVERSITY OF MISSOURI MEMORIAL UNION AND STADIUM, payments to be made to Leslie Cowan, Treasurer (Secretary of the Board of Curators, or his successor as such), as follows:

PLAN 1. Quarterly payments of \$5 each, over a period of 5 years, first payment to be made upon the signing of this subscription.

PLAN 2. \$20 on Jan. 1, 1927, \$20 on Jan. 1, 1928, \$20 on Jan. 1, 1929, \$20 on Jan. 1, 1930, and \$20 on Jan. 1, 1931.

Date of Subscription:.....

Signed .....

If it is convenient for you to pay your subscription in cash, it will materially help in carrying out the plans for the construction of the Union and Stadium.

Address .....

(Continued from Page 157)

school. He was a native of Seneca, Mo. He came to the Westinghouse company in 1917. In 1918 he was located in New London, Conn., as a representative in the development of anti-submarine devices. From 1919 to 1923 he was assigned as a special experimental investigator in the railway and motor engineering departments and in 1924 was elevated to the position he held at his death.

Wilford H. Scott, '08, who had been a missionary for the Christian Church in Jabalpur, India, for thirteen years, died there on November 24, after an operation for appendicitis, according to a cablegram received by his brother, DR Scott, Professor of Economics. Mr. Scott is survived by a wife and four daughters.



#### TWO OF M. U. ALUMNI STUDYING IN ENGLAND

Arthur D. Bond (right) A.B. '25, and Florian Preston Gass, A.B. '23, Rhodes scholars from the University of Missouri. Mr. Bond is in Christ Church and Mr. Gass is in Pembroke.

Mr. Bond is a member of Phi Beta Kappa, Alpha Pi Zeta, Phi Delta Theta, Phi Delta Phi, QEBH, and was a captain in the R.O.T.C. He was a member of the football team from '22-'24 inclusive, captain the latter year, member of the track teams of '23-'25, inc., and hails from Perryville, Mo. His father, Samuel Bond, was graduated from the University in '91.

Mr. Gass is a member of Alpha Pi Zeta, Pi Mu Epsilon, Sigma Upsilon, QEBH, won three essay prizes, was editor of the Showme and editor of M. U. Verse. His home is in Kansas City. He had four years in the R.O.T.C. Mr. Gass visited in Columbia during the week of fall registration.

## WHAT THE OLD GRAD IS DOING

1881

Thos. R. R. Ely, LL. B. '81, attorney, Kennett, Mo., was recently re-elected to represent Dunklin County in the coming session of the Missouri Legislature. Mr. Ely was prosecuting attorney of Dunklin County from 1882 to '86, was their representative in 1887, was state senator from 1905 to '17, and has been the Dunklin County representative since 1925.

1882

Chas. L. Mosley, LL. B. '82, Pe.B. '89, is special deputy commissioner in charge of the Farmers and Merchants Bank, Stanberry, Mo.

1884

Beverly Thomas Galloway, B.S. in Agr. '84, LL.D. '02, Botanist and Plant Pathologist, United States Dept. of Agr. Washington, D.C. He married Agnes S. Rankin of Kansas City, in '87. They have three sons, Robert, Gordon and Beverly S.

Edward E. Wall, C.E. '84, Zeta Phi (Beta Theta Phi), Water Commissioner of St. Louis and Director of Public Utilities from 1911 to April 1926 is Consulting Engineer 805 Merchants Laeledge Bldg., St. Louis. He married Miss Jessie Rawson of St. Louis in 1901.

1887

Omar D. Gray, '87, of the Sturgeon, Missouri Leader, known as Missouri's traveling country editor, was the principal speaker at the Knife and Fork Club banquet in Kansas City recently, and told of his experiences in attending the World Press Congress at Geneva. Mr. Gray says that his true ambition is to see the world and to go to heaven.

1890

Samuel B. Fisher, LL.B. '90, on the editorial staff of the Edward Thompson Publishing Company, Northport, N. Y., was one of the eleven men chosen from the editorial staff of the West Publishing Co., and the Edward Thompson Publishing Co., to compile the New Code of the Laws of the United States, recently published. Mr. Fisher was the first president of Zeta Phi chapter of Beta Theta Pi at Missouri. He was born at Fulton, Mo., on July 27, 1869.

1894

Thad B. Hickman, B.S. in Ag. '94, county clerk of Boone County, was elected President of the Missouri Association of county clerks at their annual convention in Jefferson City recently.

1895

Thos. Waddie Thompson, LL.B. '95, Sigma Nu, is an attorney, Greenville, Tex. He was given the name of "Big Thompson" by Dr. William Benjamin Smith, now a resident of Columbia. Mr. Thompson played right guard on the football teams of '91-'94, inclusive, and was Major of the Battalion of Cadets in '94 and '95. He served as county attorney of Hunt county, Texas and has been Mayor of Greenville. He married Miss R. A. White in 1901. They have one son, T. W. Thompson, Jr., age 17, and three daughters; Mrs. Helen Lee Swindell, Lubbock, Tex., Mrs. Cecil McFarland, and Miss Martha Louise of Greenville. Miss Martha Louise entered the University in the fall of 1925 but did not remain for the completion of the semester.

Robert Emmett Ward, Arts & Law, '95, is practicing law, 408 E. Kansas St., Liberty, Mo.

1896

Dr. James S. Barnett, Graduate Student in Med. '96, is a Physician, Hitchcock, Okla.

1897

Major Arthur M. Hitch, A.B. '97, B.S. in Ed. '07, is a member of the staff of the Kemper Military School of Boonville, and President of the Cooper County Alumni Association, one of the strongest in the state. He married Miss Bertha Johnston, in 1908. They have two children, Chas., age 16, and

Tom, age 14. Major Hitch's sister, Ruth, attended the University from '99-'03. Major Hitch is President of the Boonville Rotary Club.

1898

Jessie Alice Blair, B.L. '98, Kappa Kappa Gamma, Phi Beta Kappa, lives at 420 S. Grand Ave., Sedalia, Mo.

Dr. John L. Gerig, A.B. '98, A.M. '99, is an Executive Officer, Dept. of Romance Languages, Columbia University.

1899

Thomas N. Dysart, Arts '99, Sigma Nu, Phi Delta Phi, is a member of the firm of Knight, Dysart & Gamble, Investment Securities, 401 Olive Street, St. Louis. Mr. Dysart is President of the Investment Bankers Association of America. His rapid and successful climb in the business world was the subject of an article in the Kansas City Star of November 28, written by our friend, Ted Alford.

1900

S. C. Shipley, A.B. '00, Prof. of Mechanical Engineering, University of Minnesota, Minneapolis.

1901

John C. Hall, LL.B. '01, President of the St. Louis Building & Loan Association, chaperoned a bunch of his friends to attend the Homecoming game and the Memorial Tower and Stadium dedication exercises. The following were in his party: S. W. Greenland, St. Louis Public Service Co.; James A. McAvoy, Pres. Central States Life Ins. Co.; L. F. Turnbull, Pres. Atlas Linen & Towel Service Co.; Harry Wilcoxen, Sales Mgr., Vesper Buick Auto Co.; T. C. Tupper, Vice-Pres., Merchants Laeledge Nat'l. Bank; Wm. Swigley, Gen. Mgr., Union Fuel & Ice Co.; E. Paul Smith, Asst. Sec., St. Louis Building & Loan Ass'n.; Sidney Maestre, Vice-Pres., Mercantile Trust Co.; Ward Goodloe, Ward Goodloe & Company; Frank Mead, Mgr., Aetna Life Ins. Co.; W. E. Cameron, Asst. Mgr., The White Co.; Joe Eberhart, American Can Co., who took motion pictures of the Memorial exercises and the Kansas game, to be shown at all the Rotary Clubs in the state. All of these men are good friends of the University.



#### JUDGE FRANKLIN MILLER

Judge Franklin Miller, A.B. '01, judge of the circuit court of St. Louis, for the last six years, was not a candidate for re-election, entered the private practice of law, January 1, 1920 Boatmen's Bank Bldg., St. Louis. Judge Miller was elected on the democratic ticket in November, 1920, by about 5000 majority, although his ticket lost by about sixty thousand in the city. He has been the only democratic judge of the 16 judges in St. Louis for the last six years.

Judge Miller was valedictorian of his class, received the Rollins scholarship in his junior year, was president of the freshman class, is

a member of Sigma Alpha Epsilon, QEBH, and was one of the organization members of Phi Beta Kappa. He received the degree of LL. B. in 1903 from the St. Louis law school, now Washington University law school, where he was president of the senior class and received the alumni scholarship prize. He entered the practice of law in 1903 and practiced continuously until he was elected as judge in 1920. In 1907 he married Miss Maud Barnes of Ft. Smith, Ark., A.B. '04, Kappa. They have three children, Franklin, Jr., and Henry A., (twins) age 14, and Katherine, age 12.

1902

James E. Gibson, A.B. '02, of the Stern Bros. Co., 1009 Baltimore, Kansas City, was elected treasurer of the Kansas City University Club recently.

Frank J. McCaslin, LL.B. '02, Sigma Nu, manager of the Missouri State Life Insurance Co., 301 Commerce Bldg., Kansas City, has been elected by the Kansas City Alumni Association as a representative on the Committee on Intercollegiate Athletics, succeeding Spencer F. Harris. These men were football team mates. Mr. McCaslin played football on the teams of '98 to '01, inc., and was on the baseball and track teams of '99 to '02, inc. He married Miss Anna Wamsley of St. Louis. They have one son, and one daughter, the latter, Miss Strausie McCaslin, is a student in the University. Mr. McCaslin employs a goodly number of Missouri alumni in his office.

James A. Potter, A.B. '02, LL.B. '05, of Jefferson City, assistant attorney general under N. T. Gentry, has resigned, effective January 1, to enter the private practice of law in Jefferson City, with Judge Robert W. Otto, who retires from the supreme court then. Mr. Potter was assistant to Judge Otto when the latter was attorney general. Potter will be succeeded by L. Cunningham, '93-'98, of Bolivar, former prosecuting attorney and probate judge of Polk County.

James Louis Vandiver, B.S. in C.E. 1902, Kappa Alpha, right field and third baseman 1908, formerly of Columbia, is a civil engineer at East Ely, Nev., and Division Engineer of the Department of Highways of Nevada. While in school Jimmy's mother was chaperon at the Kappa Alpha House. Jimmy was graduated from Shelbina High School in 1902.

1903

Hugh L. Moore, '03-'06, is editor of the Missouri-Kansas-Texas Employees Magazine at St. Louis.

W. Benjamin Rollins, B.S. in M.E. '03, M.E. '05, Tau Beta Pi, Consulting Municipal Engineering, 521-22 Railway Exchange Bldg., Kansas City.

Edward Tuthill, A.M. '03, is head of Dept. of History, University of Kentucky, Lexington.

Mrs. Robert Steele Withers, formerly Miss Alice Ethel Massie, A.B. '03, of Liberty, Mo., recently sold two historical feature articles, one to the Kansas City Journal-Post and one to the Kansas City Star. In the November 14 issue of the Journal-Post appeared "What Missouri Writers are Doing," by Mrs. Withers.

1904

O. G. Heimbuecher, engineering '04-'06, Missouri Pacific Railroad Co., Coffeyville, Kan., has sent in his paid up in full subscription to the Alumni Endowment fund.

William S. Hogsett, A.B. '04, is an attorney, 1016 Grand Avenue Temple, Kansas City. He married Sadie E. Cook of Knoxville, Tenn., in 1908. They have one son, Joseph Randall, born December 17, 1919. Mr. Hogsett attended Homecoming.

Calla Edington Varner, B.A. '04 is principal of the Central High School, St. Joseph, Mo. and is active in alumni affairs in Buchanan county.

1905

Gilbert Dobson, B.S. in C.E. '05, C.E. '09, Civil Engineer, 1138 S. Frankfort, Tulsa, Okla.

Miss Meta Eitzen, A.B. '05, BS. in Ed. '06, Phi Beta Kappa, Alpha Phi Sigma, is teaching in the Beaumont High School 3836 Natural Bridge Ave., St. Louis.

Abiel Leonard Guitar, LL.B. '05, Attorney,

614, Francis Street, St. Joseph, Mo., visited the University on November 2.

Mrs. J. Elmer Jarman, formerly Mary B. Young, '05-'06, is living in Davenport, Ia., where Mr. Jarman is manager of the Metropolitan Life Insurance Co. Mrs. Jarman visited the University and was proud of the Memorial Tower and the Memorial Stadium.

William E. (Bill) Suddath, LL.B. '05, A.B. '07, is an Attorney, 215½ N. Holden Street, Warrensburg, Mo. He was a Homecoming visitor and guest of his sister, Mrs. Frank W. Dearing and Mr. Dearing, of the Stephens Pub. Co. Mr. Suddath's son, James Walker, was with his father.

Lois Welty, A.B. '05, A.M. '06, teacher English, Robidoux High School, St. Joseph, Mo.

1906

Mrs. Roscoe Anderson, A.B. & B.S. in Ed. '06, formerly Frances Nacy, of St. Louis, national director of the sixth region of the League of Women voters, was the principal speaker at the meeting of this organization in Kansas City on November 30.

H. E. Howe, B.S. in '06, is assistant professor of physics Cornell University, 108 Brandon Place, Ithaca, N. Y.

Clark Nichols, LL.B. '06, Attorney, First National Bank Bldg., Eufaula, Okla., former football star, is a member of the Oklahoma State Senate from District No. 27, and is chairman of the committee on privileges and elections, roads and highways, and a member of several other very important senatorial committees. He was an attorney at Joplin

## Climbing the Alps in Your Own Home

CAN'T be classed as sport. Upstairs, downstairs a dozen times a day is weary work, and uses up energy enough to climb mountains.

You can eliminate the trips to answer your telephone by installing an extension station on the other floor.

Saves time, saves steps, and in the bed room is a valuable convenience at night.

A residence extension costs only \$0.75 per month.

Any Bell employee will be glad to take your order, or Call the Business Office

COLUMBIA TELEPHONE  
COMPANY

An Extension Telephone Saves Time—Saves Steps

# Spring and



# flowers

await  
you in

# California

Health, joy and all-year playgrounds  
—good schools—wonderful highways  
—the beaches—resort hotels.

## ARIZONA

A winter climate like that of Egypt—resort hotels—ranches.

Travel as you choose—De Luxe or otherwise. All Santa Fe trains are excellent, but The Chief is new—superb—a regal train with \$10 extra fare from Chicago—\$8 from Kansas City—and worth it, because finer and faster. Only two business days on the way—

No extra fare on the other Santa Fe trains. ON YOUR WAY—Grand Canyon and the Indian-detour.

Will gladly arrange all details of your trip; also send picture folders upon request.

G. W. HAGENBUCH  
Division Passenger Agent,  
719 Walnut St.,  
Kansas City, Mo.  
Phone Bell-Main 7340

from 1907-'09; moved to Oklahoma in 1911. He held the rank of captain in the World War. He married Miss Daphne Bishop in 1908. They have one son and one daughter.

William K. Seitz, B.S. in C.E. '06, formerly city engineer of St. Joseph, Mo., is city manager of Melbourne, Fla., and the subject of a feature story in the Melbourne Times of November 12. The story commends Mr. Seitz for the wonderful work he has been doing in Melbourne. He is a member of Delta Tau Delta, Tau Beta Pi, Acacia, Sigma Xi, and QEBH. He married Miss Claudia F. McBride in 1912. They have one son. Mr. Seitz was born and reared in Kirksville, Mo., and was valedictorian of his class.

1907

Roscoe (Puny) Bluck, '07-'10, a member of the 1909 football team, coached by W. W. Roper, was selected as one of the tackles on Roper's all-time all-American football team. Bluck was a great football player and one of the stars on the 1909 team. He died on Homecoming Day, November 30, 1922, at Stamps Ark.

Joseph Hugh Brooking, B.S. in C.E. '07, Tau Beta Pi, Sigma Xi, is a railroad engineer, Calhoun & Kentucky, Memphis, Tenn.

A. H. Chapman, M.S. in Ed. '07, represented his alma mater on the occasion of the centennial Anniversary of the Founding of Furman College, Greenville, S. C., Dec. 7.

Dr. Walter E. Dandy, A.B. '07, is with Johns Hopkins Hospital, Baltimore, Md. He writes "here is three dollars for the Alumnus for the year; nothing can give me greater pleasure."

Thomas B. Montgomery, A.B. '07, Kappa Sigma, farmer of Bolckow, Mo., was re-elected to represent Andrew county in the next session of the legislature. Mr. Montgomery represented Andrew county in the last session. He was a member of the Board of Education for six years. In the last session he was chairman of the committee on Penitentiary and Reform Schools. He writes, "The Alumnus is a wonderful publication—it keeps us in touch with the University and college friends."

B. A. Williamson, B.S. in E.E. '07, is an engineer, 1324 Wall Street, Los Angeles (Cal.) Gas & Electric Corporation.

B. W. Tillman, B.S. in Ag. '07, football captain 1906-07 has signed a contract to remain three more years as farm adviser of St. Clair County (Ill.)

George R. Whitmore, A.B. & LL.B. '07, Kappa Sigma, who won his M in tennis 1903-'07, is General Claims Attorney, North American Light & Power Co., 204 Peoria Life Bldg., Peoria, Ill. He married Miss Elizabeth Lisle Kirkpatrick of Peoria, in 1923.

1908

Wm. J. Boyd, LL.B. '08, is an attorney, 206-7 Kirkpatrick Bldg., St. Joseph, Mo. He married Ann Elizabeth Todd of St. Joe in 1914.

Clarence A. Cannon, LL.B. '08, representative of the Ninth Missouri district in Congress, has a perfect attendance record for two terms in the house. Only nine other house members of 435 have similar records.

J. Denny Estes, '08-'11, K.A., is in business with his brother-in-law, Everett Manning, A.B. '08, in the Mowbray Undertaking Co., Tulsa, Okla. He was a Homecoming visitor. Denny married Margaret Lewis, '16-'23, in 1924. They have one son, James Denny Estes, Junior, born September 21, 1925.

John A. Gloriod, LL.B. '08, is practicing law at Poplar Bluff, Mo.

Edgar D. Lee, B.S. in Ed. '08, A.M. '09, President of Christian College, was recently elected President of the American Association of Junior Colleges, at their annual meeting in Jackson, Miss. This organization comprises about 250 Junior colleges from all parts of the United States.

Mrs. Dora Otis Mitchell, A.B. '08, A.M. '16, Phi Beta Kappa, former Missionary to China, '10-'15, now living at No. 5 Thompson St., Murray Hill, Annapolis, Md.

Samuel Moreel, Jr., B.S. in C.E. '08, Tau Beta Pi, Structural Engineer, Room 208—910 S. Michigan Ave., Chicago.

Hugh Mossman, Law & Ed. '08, Attorney, Vinton, Iowa.



Eugene W. (Robbie) Robinson, B.S. in C.E. '08, Tau Beta Pi is with the McKenzie Construction Co., General Contractors, 716 Travis Bldg., San Antonio, Texas. He married Miss Letzetta Rose Fink of Alden, Minn., in 1910. They have one daughter, Rosalie, age 12.

J. P. Sievers, A.B. and B.S. in Ed. '08, Phi Beta Kappa, Acacia, M.A., '10, Ph.D. '16, Harvard, Cashier of the Downey Idaho Bank, writes: "The Alumni Association is to be congratulated on the fine representation given old Missouri in the columns of the Alumnus, which strikes me as being an ideal medium for keep-

ing posted on what friends and schoolmates of former days are doing."

1909

Chas. Dearing, B.S. in Ag. '09, Ass't. Director in charge of coastal Plain Station, Willard, N. C., and Horticulturist of the U. S. Department of Agriculture, Washington, D. C., was a Homecoming visitor and the guest of his brother, Frank W. Dearing, of Columbia.

Mr. Dearing reported that Fred E. Miller, B. S. in Ag. '12, is state horticulturist and director of Test Farms, N. C. Department of Agriculture, Raleigh; and that C. D. Matthews, B.S. in Ag. '14, is chief of the division of Horticulture, State College, Raleigh.

Frank Y. Gladney, A.B. '09, is an attorney, 801 Merchants LaClede Bldg., St. Louis.

Floyd F. Hanley, B.S. in C.E. '09, Phi Gamma Delta, Phi Mu Alpha, Mystical Seven, President of Glee Club, formerly of Shelbina, Mo., is manager of the Washington branch of the Ingersoll Rand Co., 323 Munsey Bldg., Washington, D. C. He married Nancy Iglehart, Dobbs Ferry, N. Y., in 1913. They have one son, John I. Hanley. During the first week in December Mr. Hanley bumped into Raymond Lee, Bob Fairman and John Gordon, all "Noble sons of 1909," and they had a little celebration at the Washington Hotel. Floyd and his family live at 221 Rosemary Street, Chevy Chase Maryland.

Franklin C. Howell, LL.B. '09, Phi Delta Theta, Phi Delta Phi, Lawyer, 1001 Board of Trade Bldg., Portland, Oregon.

James Dwight Magee, LL.B. '09, Phi Gamma Delta, Associated with Kuffman & Co., Investment Bonds, 329 Security Bldg., St. Louis.

Clifford F. Phillips, B.S. in C.E. '09, Contractor, Owens-Ames, Kimball Co., 38 Pearl St., Grand Rapids, Mich.

Harold James Trowbridge, A.B. '09, is a Retail Lumber Dealer, the Kenosha (Wis.) Lumber Co. He married Miss Elizabeth Whitaker in 1917. They have one son and one daughter.

Roland B. Westover, B.S. in C.E. '09, Phi Delta Theta, Life Insurance Agent, Pacific Mutual Life Insurance Co., 517 Finance Bldg., Kansas City, Mo.

1910

Rufus Easton Dudley, B.S. in M.E. '10, Tau Beta Pi, Sigma Xi, Metallurgical Engineer, Bethlehem Steel Co., Bethlehem, Pa. He married Miss Mariam James in '14.

James F. Hudson, A.B. '10 who is practicing law in California has changed his address to 410B N. Oakhurst Drive, Beverly Hills, California.

James Sidney Rollins, LL.B. '10, Phi Delta Theta of Columbia, was re-elected at the general election to represent Boone County in the next session of the Missouri Legislature. Mr. Rollins is one of the most ardent supporters of the University, and considerable credit is due him for the fine cooperation he gives every alumni and University enterprise. He is serving his fourth term in the Missouri Legislature and has never had an opponent in the election. Mr. Rollins married Miss Sara Vivion of Columbia. They have one son.

DuVal (Bobby) Smith, A.B. '10, LL.B. '12, Glee Club '11, is practicing law at 509 Corby Bldg., St. Joseph, Mo. He has been prosecuting attorney of Buchanan county for the last four years. Mr. Smith married Florence La Turno, B.J. '12, of Belleville, Ill., on October 29, 1912. They are at home at 2837 Renick Street, St. Joseph. Mr. Smith's brother, T. F. Smith, was a former student of the University.

Julia Spalding, B.S. in Ed. '10, A.M. '15, Kappa Alpha Theta, Sigma Xi, Pi Mu Epsilon, Sigma Delta Epsilon, is a teacher, Christian College.

W. E. White, B.S. in Ag. '10, 1123 S. St. Louis, Tulsa, Okla., writes, "Here's \$3.00 for the Alumnus. Can't quite do without hearing about the old boys and "young girls" of 1906 to 1910.

Fred Robert Wolfers, A.B. '10, Phi Beta Kappa, Delta Sigma Rho, Q.E.B.H., Phi Delta Phi, Beta Theta Pi, Farm Loans and Savings Banking, 104 E. 3rd St., Maryville, Mo.

1911

Allen Joseph Armstrong, a former student in the University from 1911-1913 is professor

**GLUE-LOCKED**  
GLUE-LOCKED-REG. U.S. PAT. OFF.

*Improved Envelopes  
Correspondence Envelopes  
At No Greater  
Cost*

**Wider Gumming close to the corners-seals easily and stays sealed. Wider Flap increases capacity.**

Compare this with your own envelopes

**BERKOWITZ ENVELOPE CO.**  
KANSAS CITY, MO.

THINK!

of the

Sensible Rates

at the

Hotel Columbian

Columbia, Mo.

## How Is Your CREDIT?

YESTERDAY—  
life insurance agents were considered a bore, a time consuming nuisance. That prejudice has disappeared now.

Today, if you ask a banker about your credit, he asks you about your life insurance.

But, though you may have enough insurance to satisfy your banker, you may not have exactly the right arrangement of policies to secure you and your dependents the maximum of future security.

A John Hancock agent is a specialist in security for the future, the foundation of mental serenity.

Ask him to come in.

*John Hancock*  
LIFE INSURANCE COMPANY  
OF BOSTON, MASSACHUSETTS

A STRONG COMPANY, Over Sixty Years in Business. Liberal as to Contract, Safe and Secure in Every Way.

## American and Annex Hotels

(Absolutely Fireproof)

7th & Market, 6th & Market  
ST. LOUIS, MISSOURI

On direct car line with the Union Station and surrounded by all the leading places of amusement.

500 rooms with all the conveniences of a home. Bath (tub or shower) in every room. Running ice water. Telephone. In fact, everything to make you comfortable and feel at home.

Our "nation-famed" cooking at reasonable prices will attract you to our cafe.

E. Berkley Martin, Manager.

## Memorial Tower

Home Economics Building and the addition to same, now under construction, the new University Hospital, Methodist Girls' Dormitory, Boone County National Bank Building and many others are "Simon Built."

**Simon Construction  
Company**

314-18 Guitard Building  
Columbia, Missouri

of English and head of that Department, Baylor University, Waco, Tex. He is in charge of the Armstrong Travel Courier. He married Mary Maxwell of Waco in 1911. They have one son, Richard Maxwell Armstrong.

Roger E. Kirchner, of Otterville, short course student in agriculture '11, '12 and '13, was re-elected in November to represent Cooper County in the Missouri Legislature. This is his second term. He married Lena Ellen Gochenour in 1913. They have one son and three daughters.

1912

W. G. (Bill) Curry '12, special representative for the Phoenix Insurance Co., 428-32 Pierce Bldg. St. Louis. He married Marguerite Hudson of Carrollton, Mo.

Three Missouri alumni are connected with Synodical College: Miss Benson Botts, A.B. '05, B.S. in Ed. '12, A.M. '16, Dean, H. L. Bates, A.B. '15, Grad. '24, Head of the Dept. of Education, Miss Chlo Fink, A.B. & B.S. in Ed. '11, A.M. '17, Head of the Dept. of English.

Elmer R. Axon, B.S. in C.E. '12, Acacia, Mystical Seven, is a civil engineer with his own firm, Russell & Axon, 404 McDaniel Bldg., Springfield, Mo. He married Iva L. Thomas A.B. & B.S. in Ed. '12 of Kansas City in 1917. They have two sons, Donald Thomas, age 5, John Thomas, age 3 and one daughter, Anna Louise, age 8.

Sidney M. Skinner, B.S. in Ag. '12, Ass't. cashier Buxton & Skinner Ptg & Sta. Co., 306 N. Fourth St., St. Louis, Mo.

Jacob Warshaw, Ph.D. '12, Phi Beta Kappa, is Professor of Spanish in the University. He married Hazel M. Williams, B.S. in B.A. '21, A.M. '26, of St. Louis in 1920. They are at home at 412 Stewart Road.

1913

Mrs. Lucy Kennedy Brown, wife of Ralph L. Brown, A.B. '13, Pittsburgh, Pa., national president of Cwens, honorary sophomore women's society, was the guest of honor and principal speaker at the annual Homecoming luncheon of that organization on November 20. The following former members were present: Mrs. Arthur Wilson of Champaign, Ill., formerly Miss Maizie Mills; Franceswayne Allen, who is with the Associated Producers, Inc., of Fostoria, O., and Miss Sara Ann Wheeler, Mary McCammon and Alice Sonnenschein, all of whom are attending the University.

Geraldine Collum, B.S. in Ed. '13, Kappa Alpha Theta, teaches in Beaumont High School, St. Louis, Mo.

Lillian E. Kirk, B.S. in Ag. '13, Supervisor, Black Hills Teachers College, Spearfish, S. D. Siegel Mayer, B.J. '13, is advertising manager, Globe Publishing Co., Ironwood, Mich.

B. H. (Dutch) Mueller, M.E. '13, is a member of the firm of Goldsmith-Mueller Co., dealers in road and building materials, Syndicate Trust Bldg., St. Louis. They have just completed their first year in business and are

## PROFESSIONAL DIRECTORY

**VOLNEY McFADDEN**  
AB. '13, LL. B. '14  
Counsellor at Law  
277 Broadway  
New York, N. Y.

**ROSCOE E. HARPER, A.M., LL.B., '20**  
Attorney and Counsellor at Law,  
1000-1007 Atlas Life Bldg.,  
Tulsa, Oklahoma  
Firm: Mason, Honnold,  
Carter & Harper

E. Kemper Carter, C. E. '12  
Albert R. Waters, C. E. '12  
**The CARTER-WATERS  
CORPORATION**  
Materials of Construction  
2049 Main Street, Kansas City, Mo.  
Building and Paving Materials

**JOHN S. HORNBACK, A. B. '16, LL. B. '18**  
Attorney and Counsellor at Law  
700-706 Woodward Building  
Washington, D. C.  
Telephone, Main 8300  
Practice Before Supreme Court of the  
United States, Federal and State Courts  
and all Government Departments.

Cherry 1978 Res. Eddy 8577  
**GROVER C. HOSFORD**  
Attorney and Counsellor at Law  
1630 Engineers Bank Bldg.  
Cleveland, Ohio

Main 0944 Res. Forest 3144  
Equitable of New York  
**ERNEST STAUDE**  
Contracts Indemnifying for  
Loss  
to Persons and Property  
Entire Fifth Floor Equitable Bldg.  
St. Louis, Mo.  
"See Me and Die Laughing"



THAT CHRISTMAS WHIRL,

"No time to shop in this mad X'Mas whirl  
Worst of it is—'What'll I do 'bout my girl!'"

Just step around to the Busy Bee—and your gift problem is solved. No matter where she lives or what she's like—Busy Bee has the answer. Send her Busy Bee Candies—we ship everywhere. And (happy thought)—if she is in town—after the holidays are over—why not a quiet "gab-fest" over a tiny table? "Quali-Tea" Rooms—take elevator to second floor—417 North 7th Street.  
BUSY BEE CANDY CO.

ST. LOUIS

### THE WOODS SERVICE STATION

13-15 S. Eighth St., just south or back of the Boone Co. Nat'l. Bank, owned by an alumnus, Lee A. (Penny) Woods, '07. Operated by G. Y. (Go Yonder) Ecton. Write or wire him for parking reservation.

### PAUL PARSONS

A name that stands for quality in photography. That's why students and townspeople have their work done at PARSONS.

### Alumni and Former Students

When You Return to  
Columbia—

Phone  
**491 Taxi**

*The Old Reliable*

Ten Years of Success  
17-Passenger Bus  
for party calls

specializing in a general line of road and building materials. Mr. Mueller's brother, A. G. Mueller, B.S. in E.E. '10, is Vice-President of the Power Machine Co., 310 Dwight Bldg., Kansas City.

C. E. Ragsdale, A.B. '13, B.S. in Ed. '13, A.M. '14, Phi Delta Kappa, Instructor in Psychology, University of Wisconsin, Madison. He married Miss Minnie Sand, 1917.

G. H. Banks, B.S. in Ag. '14, of Little Rock was recently appointed assistant director of Experiment Station work in charge of the branch rice experiment station. He was formerly Agricultural Agent in Arkansas for two years and for four years was field engineer of the Cooperative Association of Arkansas.

Maxwell N. Beeler, B.J. '14, editor of the Capper Farm Press, Topeka, Kansas. He married Mary H. Springer, B. S. in Ed. '13, in 1915. They have two sons and one daughter.

S. P. Dalton, B.S., M.A. '14, LL.B. '18, formerly of Columbia, was elected prosecuting attorney of Cape Girardeau County, Mo., in the recent election.

Mark Godman, A.B. '14, a student in the secondary education department of Columbia University, Teachers' College, was recently elected president of the Secondary Education Club.

Harry L. Harty, Arts '14, Sigma Chi, T.N.E., Banker, Bloomfield, Mo.

Wm. Harvey Howell, B.S. in Ag. '14, Gamma Sigma, winner of the J. Ogden Armour Scholarship 1911, farm manager, Sapeloe, Ga. His home was formerly in Grant City, Mo. He married Pearl Rentz of Columbus, Ga., in 1910. They have two girls, Frances, age four, and Mary, age three. His brother, J. A. Howell, attended the University from '13-'17. He is now a Doctor in the Veterans Hospital, Excelsior Springs, Mo.

Justus H. Hursh, B.S. in Ag. '14, A.M. '15, is a newspaper advertising representative, Alpha Gamma Rho, Gamma Sigma Delta, 3-242 General Motors Bldg., Detroit, Mich.

J. L. (Tuck) Milligan, LL.B. '14, was re-elected to Congress from the third Missouri district of Richmond, in the recent election.

William C. Pollock, A.B. '14, Phi Beta Pi, Sigma Phi Epsilon, Officer United States Army, 39 Whitehall, New York City.

John K. Rohrer, B.S. in C.E. '14, Civil Engineer, Guernsey, Wyoming.

From Hammond, Ind., Mrs. O. C. Smith, former El Doradoan, sends a clipping from a newspaper to explain why she does not feel at home there. This is an excerpt: "The bridesmaids, dressed in attractive gowns of pastel shades, were: Angeline Pedziwaitr, Violet Kralikowski, Marie Bubzik, Helen Novak, Helen Kluga, Martha Koucinski and Celia Prusiezki." The bride was Lillian Mrowcinski and the bridegroom was Frank Mikulski.—*El Dorado Times*.

This was published in the Kansas City Star on November 14. Mrs. O. C. Smith, was formerly Blanche A. Whitaker, '10. She married Orsino Cecil Smith, A. B. '12, A.M. '14. They are at home at 1217 Harrison, Hammond, Ind.

Roy G. Wiggans, B.S. in Ag. '14, M.S. '15, Ph. D. '19, Cornell, Department of Plant Breeding, Cornell University, Ithaca, N. Y., expects to sail on March 5 for Nanking, China.

### THE TIGERS

are hot on the trail of another Football Championship.

Keep up with them by using RED HAT GASOLINE.

Our comfort station is approved by the State Board of Health. Our Bureau of Information is 100% reliable.

Alumni Motorist Headquarters

Alumni Management Student  
Labor

Red Hat Service Station  
Broadway and College Ave.

A. M. Cowan, B.S. Agr. '20, Mgr.

Dodge  
Brothers  
Motor  
Cars

Graham  
Brothers  
Trucks

Brunswick  
Tires

**JOHN N. TAYLOR**  
Columbia, Mo.

### STATION KFRU BROADCASTING

From

### STEPHENS COLLEGE

Columbia, Missouri

A RIDING ACADEMY is one of the new features at Stephens this year. Any girl having obtained her parents' permission is eligible for membership.

THE BARBECUE, an annual celebration, is being planned. The new girls are looking forward to their first Barbecue at Stephens, for they have heard that they will have an "old fashioned" good time.

Last week we invited you to visit us. Again we extend that invitation.

**Station KFRU Signing Off**

How to Get  
DAILY  
NEWS  
of the  
TIGERS--

Just clip the coupon below, pin a couple of dollar bills to it (or your check) and mail it to

THE MISSOURIAN

A sports page full of Tiger and Valley "dope" every day; private leased wire for every game; play by play accounts of each game.

Subscribe Today!

The Daily Missourian  
Neff Hall, Columbia

Herewith find my \$2. I want the Daily Missourian for the entire football and basketball season of 1926-27, ending next March. Start my subscription at once.

Name .....

Street .....

Town .....

for a nine months period to aid in a cooperative enterprise between the University of Nanking, Cornell University, and the International Educational Board, in reorganizing and conducting plant breeding at Nanking University and their cooperatives. He will be accompanied by Mrs. Wiggins, formerly Edna D. Landon, A.B. '15. They have one son. They will probably stop in Columbia for a few days in February. A list of the alumni and former students of the University in Japan and China have been furnished Mr. Wiggins.

Richard Folsom Tickle, B.S. in E.E. '14, formerly of Excelsior Springs, Mo., is secretary of an Engineering Sales Co., 126 S. Ninth St., Minneapolis, Minn. He married Mildred Austin in 1924. They have one son.

1915

Ruth Waters Gibson, A.B. & B.S. in Ed '15 and Capt. Gibson, Ft. Riley, Kan., write that they were heart sick that they couldn't attend Homecoming but that they listened in on the radio in company with Rufus and Francis Meriweather Ramey. She writes: "We forgot Fort Riley, the army, the years, everything, when we heard "Old Missouri" in all its beauty and appeal. That song always stirs my emotions uncontrollably, which of course, means that happy memories are connected with it." Mrs. Gibson wanted to locate Lula Belle Grigsby, now Mrs. D. L. Sears, somewhere in Ohio. Does anybody know her present address?

Carroll Evan Howell, B.S. in Ag. '15, professor of animal husbandry, University of California, Davis, visited the University and his parents here on December 6, on his return home from the International Live Stock Show. Mr. Howell married Miss Katherine C. Ross in 1920. They have two daughters, Carolyn Crystal, age four, and Joan Mildred, age two. Mr. Howell's brother, Chas. R., is a graduate of the College of Agriculture and is principal of the High School at Neosho Rapids, Kan. His three sisters are also graduates; Miss Roberts is teaching in Columbia, Miss Mildred in the Tyler (Tex.) Junior College, and Miss Anna May is teaching Home Economics in DeSoto, Mo.

John D. Hull, Jr., Ed. '15-'20, is teaching, High School, Springfield, Mo.

J. G. Wells, Jr., B.S. in Ag. '15, is extension specialist in Dairying, Michigan State College of Agriculture, with headquarters at Marquette, Mich. He was a Homecoming visitor. Some hunter, too.

1916

Leo M. Arms, B.S. in Eng. '16, Tau Beta Pi, is with the Chicago Post Company, 4251 Irving Park Blvd., Chicago, Ill.

Nellie Crockett, B.S. '16, M.A. '26, is Principal of the High School, Hamilton, Mo.

Arnot M. Finley, E.E. '16, member of the track teams of '15 and '16, and cross country teams of the same years, is valuation engineer for the Union Electric Light & Power Co., St. Louis. He was formerly President of the St. Louis Alumni Association. His great uncle, John W. Finley, formerly attended the University. Mr. Finley married Miss Mabel Wirth of Greenville, Ill., in 1919. They have one son, John Arnot, age five, and one daughter, Jane Alice, age three.

Ella Helm, B.S. in Ed. '16, teacher, 734 Magnolia, Ave., Excelsior Springs, Mo.

Mrs. Arnold Leonard, formerly June Van Norstrand, A.B. & B.S. in Ed. '16, Kappa, and Mr. Leonard, A.B. '14, formerly of Joplin, are living at 90 Marion Road, Watertown, Mass. Mr. Leonard was recently elected as a representative to the Massachusetts legislature. They have two children, James Arnold, born September 1, 1921, and Marjorie, sixteen months old.

Ben Long, B.S. in Commerce, '16, Mystical Seven, Acacia, Athenean, General Auditor, Century Electric Co., St. Louis.

Dr. W. C. Overstreet, A.B. '16, is a Physician and Surgeon, Jonesboro, Ark.

Wm. A. Sloss, M.E. '16, is still in St. Luke's Hospital, Room 216, St. Louis. Encouraging progress on his condition is reported. You will remember that he suffered severe injuries in an automobile accident many months ago. Troy Russell of Sharon, Pa., Ralph Coatsworth, Mexico, Mo., Tom Cap and Paul Daniels of St. Louis, visited Mr. Sloss recently.

The Best Dairy Products for  
Christmas.

We find it pays to advertise in the Alumnus.

The alumni and former students of the University in Columbia appreciate the support given their magazine, The Alumnus, by the Columbia business men.

The Central Dairy appreciates this business and we do every thing we possibly can to cater to our friends among the alumni and former students.

CENTRAL DAIRY

"Dot" Sappington and  
Clyde L. (Brick) Shepard  
Proprietors

"Mother May We Have More?"

WHEN YOU MOTOR TO  
COLUMBIA

Be sure to come to alumni motorists headquarters, leave your car here for attention, enjoy our service, and let your mind rest easy with the assurance that your car is safe and ready for your trip home.

The Missouri  
Motor Co.

Jack Taylor's Place  
"Heavy" Thomas Assisting

ALUMNI MOTORIST  
HEADQUARTERS

IF

It is a Book

YOU

Want,

Try

Missouri  
Store

Columbia, Mo.

Write for Our 1926 Catalogs

He enjoys hearing from his friends and classmates.

Dee Perkins Sturges, E.E. '16, Beta, formerly of Sedalia, Mo., is Petroleum Engineer (oil refining) c/o Henry L. Doherty & Co., 60 Wall St., New York City. He married Evelyn Arnold in 1921. Mr. Sturges, brother, Gould A. Sturges, E.E. '12 of Sedalia, and two sisters, Georgia Sturges, A.B. '09 and Berenice Sturges A.B. '12, are all graduates of the University.

C. F. Wasser, '16 and Mrs. Wasser have moved to Nokomis, Florida.

Dale Wilson, B.J. '16, Sigma Delta Chi, Delta Upsilon, feature and exchange editor of the Milwaukee (Wis.) Journal, wrote a wonderfully fine editorial feature story about the Memorial Tower, using the photograph of the Tower in the November 20 issue of his paper. Mr. Wilson is secretary of the Milwaukee Alumni Association and is actively interested in alumni and University affairs. He married Kathleen Flynn in 1923

1917

H. L. Chung, '17, Specialist in Tropical Agronomy, U. S. Dept. of Agr., Hawaii Experiment Station, Honolulu, Hawaii, was the long distance attendant at Homecoming. He traveled over eight thousand miles to get here. He left the day after Homecoming for Bonne Terre, Mo., to visit with his colleague, F. S. Voss, for four days and then made a bee-line for home.

Raymond S. Davis, LL.B. '17, Delta Epsilon, Phi Delta Phi, Attorney, 1110 Boatman's Bank Bldg., St. Louis. He married Miss Jule Sommers, B.S. in Ed. '17. They have one son, Raymond, Jr.

Andrew D. Pierson, B.S. in Ed. '17, A.M. '26, teacher in Junior College, Kansas City, Mo.

Donald F. Wilson, '17, is representing the National City Co., Boatmen's Bank Bldg., St. Louis. He was a Homecoming visitor.

1918

Bernard T. Hurwitz, A.B. '18, Gregory Scholarship '17, debating '14, Phi Beta Kappa, assistant prosecuting attorney of Jackson County, has prepared the new state banking code to be presented to the legislative committee of the Missouri Bankers Association. All the banking laws have been gathered into one bill of more than seventy-five typewritten pages for submission to the legislature, which meets next month. Mr. Hurwitz was deputy finance commissioner of Missouri in charge of the blue sky department. He married Miss Ruth Taxman last May.

Baxter B. Bond, A.B. & B.S. in B. & P.A. '18, Kappa Sigma, QEBH, former student president, is secretary and treasurer of the Bankers Bond and Securities Co., Hannibal, Mo., and takes an active interest in Marion County Alumni Ass'n. affairs.

C. E. Stephens, B.S. in Ed. '18, Phi Delta Kappa, is teaching in the Emerson School, St. Louis. He married Ruth E. Douglas, a former student of Columbia, in 1924. They are at home at 5550 Page Avenue.

Belmont Farley, B.S. in Ed. '18, who is enrolled in the educational administration department of Teachers College, Columbia Uni-

For the Freshest of  
Flowers in Columbia  
write, wire, or phone

Bernard's

*The Florists*

919 Broadway

Phone 2121

Make  
your  
money  
feel  
at  
home.

The Boone County  
Trust Company

*"Built by Safe Investment"*

Football

is the Tigers' game—but

Quality Printing  
and Binding

is our game

Remember

E. W. STEPHENS  
PUBLISHING CO.

Where Hitt Hits Broadway

Columbia, Mo.

### FOOTBALL SCHEDULE!

The football schedule for 1927 has been announced by C. L. Brewer, director of athletics, as follows:

- Oct. 1—Kansas Aggies at Columbia.
- Oct. 8.—Nebraska at Columbia.
- Oct. 15.—No game.
- Oct. 22.—Southern Methodist at Dallas.
- Oct. 29.—Northwestern at Evanston.
- Nov. 5.—West Virginia at Columbia.
- Nov. 12.—Iowa State at Ames.
- Nov. 19.—Kansas at Lawrence.
- Nov. 24.—Oklahoma at Columbia.

You will note that the traditional battle with the Jayhawks is scheduled on Saturday, November 19, at Lawrence. The Tiger Homecoming game will be played with Oklahoma in Columbia on the following Thursday, November 24. Kansas has decided not to play on Thanksgiving Day. This probably will be the first of a series of turkey-day clashes between the Sooners and Tigers, to be played on a home and home basis. It will also be the first time Missouri has met any opponent other than the Jayhawks on Thanksgiving Day.

There are three intersectional games scheduled—Southern Methodist at Dallas on October 22, with a big alumni rally meeting in Dallas the night before, Northwestern at Evanston on October 29, when the Chicago Alumni Association is preparing to put on a big alumni rally meeting on the night of October 28, and West Virginia at Columbia on November 5, which has been designated as "Missouri Day."

This is a hard schedule, perhaps the hardest the Tigers have ever had, but Coach Henry is pleased and enthused. As you will note, October 15, is an open date. Washington University was not scheduled this year, due to difficulties arising from the Washington-Missouri game here this fall. It resulted also in calling off basketball and other athletic relations this season.

With the completion of additional roads in Missouri next year with football enthusiasm growing all over the state, and a desire among the alumni, former students and friends of the University to see the Tigers in action, and to visit the University, there is every indication of a record attendance at football games in Columbia next fall.

The Kansas City alumni are making big plans already for a big alumni rally meeting there the night before the Missouri-Kansas game at Lawrence and, of course, the Homecoming game here with Oklahoma will draw a record crowd.



Barton Robnett

Tom McHarg

versity, was recently elected President of the student council.

James O. Walz, B.S. in Eng. '18, Eta Kappa Nu, Steinmetz, student senate, is an electrical engineer with Westinghouse Electric & Mfg. Co., Springfield, Mass. He married Ruby A. Roberts of Wilkinsburg, Pa., on September 1, 1923.

M. C. Gregory, B.S. in Ag. '18, Assistant Marketing Specialist, U. S. Dept. of Agriculture, 1915 F. & M. Bank Bldg., Fort Worth, Texas.

1919

Archie B. Klein, football, Beta, is Manager, Trading Dept., G. H. Walker & Co., Stocks and Bonds, 503 Locust St., St. Louis.

Frank H. Hoffstrom, C.E. & T.E. '19, Hydrography, Camp No. 2, Cedar Falls, Wash.

Ralph (Gravy) Gravelly, B.J. '19, Sigma Nu, Sigma Delta Chi, Student Senate, President of the Missourian Board and Eugene Field Scholarship, is in the newspaper business at Bolivar, Mo. He is president of the Polk County Alumni Association. Mr. Gravelly married Miss Esther M. Hammontrree of Bolivar in 1920.

Miss Veda B. Harrah, B.S. in Ed. '19, formerly of Golden City, Mo., is a Disciple missionary, Bilapur District, Mungeli, C. P. India. She left the U. S. on September 6, 1925, and will be in India for six years.

Mayme Y. Hawkins, B.S. in Ed. '19, A.M. '26, teaching, Phillips High School, Birmingham, Ala., with home address 2805 Juniper Ave.

Mrs. Walter W. Wieman, formerly Myrtle Marie Cramer, B.S. in Ed. '19, is living at 702 W. Pratt Street, DeSoto, Mo. She writes, "I feel it a privilege to send my check for the Alumnus. I wish, however, that more members of the class of '19 would keep in closer touch with alumni activities in order that we may read more about them in the magazine." The Alumnus shall be glad to hear from the members of the class of '19. Come on.

1920

Miss Jeanette Brockmeyer, former student 1920-22, is teaching Latin in Ferguson High School.

Paul W. Cook, A.B. '20, Phi Beta Kappa, Sigma Nu, Life Insurance, 406 Marquette Bldg., Chicago.

Melvin P. Hatcher, B.S. in Eng. '20, is taking special graduate work, Ohio State University, Columbus. His home address is Acacia House, 1835 Indianola Ave.

Andrew Morris, B.S. in Ed. '20, is teaching in the LaGrange (Mo.) Junior College.

Hayden Nichols, B.J. '20, is the American Consulate General, Post Office Box 1059, Shanghai, China.

Dean Wilson, B.S. in Eng. '20, Tau Beta Pi, Ass't. Division Engineer, Missouri State Highway Dept., 110 East 20th St., Joplin, Mo.

Ray Windler, '20-'24, who stayed with Dr. and Mrs. C. W. Greene, when a student and worked his way through school, is with the Goodman Hardware Company, Barnett, Mo. He has just recently recovered from a serious illness, starting with pneumonia last March, and was in the hospital ten weeks. He was in Detroit at that time, where he will return next spring or summer, to his job with the American Blower Co. George Edscorn and Eurig called on Windler during his illness. Windler is arranging to be in Columbia on St. Pat's day. He writes that Fritz Rhombach is with the Union Electric in St. Louis.

1921

Roy D. Miller, A.B. '21, cashier of the bank of Gerster, Mo., was recently elected to represent St. Clair county in the coming session of the legislature. During the world war he served as an ensign in the navy. His brothers, Dan E. and John A. were graduated from the College of Agriculture and another brother, Clint L., is enrolled in the University.

Anton A. Tibbe, A.B. '21, of the law firm of Boyle & Priest, 1400 Central National Bank Bldg., St. Louis, visited the University for the Washington game, the first visit to the University in five years. Tibbe is one of our most enthusiastic alumni and has been active in alumni affairs ever since he finished school. He is one of the group who had charge of entertaining the Missouri party when the

### DORN-CLONEY NEWS NOTES

#### About Prominent University Folk

The constructors have started again on the work of Lee H. Tate Hall, the new law building. Dean J. P. McBaine believes that the building will be completed by the middle of March.

M. F. Thurston of the Exchange National Bank has been elected president of the Columbia Kiwanis Club. Other officers are: First vice-president, Herman Schlundt; second vice-president, Claude Thomas; trustee, W. A. Tarr; treasurer, E. S. Dysart; and Board of Directors, Tom Allton, B. C. Hunt, John L. Platt, Sam Shirky, J. M. Taylor, F. M. Tisdell and J. J. Oppenheimer.

The members of the Debate Board have been chosen as follows: Women's Forum, Mary Louise Ramsay; Athenaeum Society, Eliza Johnson; M.S.U. Society, Clarence Schubert; Prof. S. I. Langmaid, Dr. H. G. Brown, Dr. J. W. Rankin, and Prof. G. W. Hulbert, debate coach.

President Stratton D. Brooks was one of the judges, serving with United States Senator James A. Reed and Judge E. E. Porterfield of Kansas City, in the debate between Oxford University and Westminster College, held in Kansas City on December 1.

The Rev. David R. Haupt, rector of the Appleton (Minn.) Episcopal Church, will be the new rector of the Columbia Episcopal Church, beginning January 1.

J. H. Coursault, former Dean of the School of Education, is Professor of History and Philosophy of Education. Prof. and Mrs. Coursault live at 212 Hicks Avenue, Columbia.

Sigma Xi, scientific society, announces the election of full members as follows: Miss Mary Violette Dover and Henry Coburn, assistant professors of chemistry; Charles H. Philpott, zoological department; Mrs. A. E. Stearn, bacteriology; and C. M. Tucker, botany department; and also the following associate members: D. H. Cunningham, P. M. Gussow, V. L. Tiller, V. I. Walz, and W. W. Yocum. H. D. Hooker, Assoc. Prof. of Horticulture is secretary of the organization.

Lorne Buckner, Tiger athlete of Kansas City, has been elected President of the students of the School of Arts and Science.

Rudolph Ganz, pianist-composer and conductor of the St. Louis Symphony Orchestra, appeared in recital in the University Auditorium December 1.

The fifth faculty recital of the School of Fine Arts was given by Rogers Whitmore, violinist, in the University auditorium. Mr. Whitmore was accompanied at the piano by Ellsworth A. McLeod.

## DORN-CLONEY LAUNDRY CO.

Managed by the Muburn Boys

## ALUMNI NEWS NOTES

Lucinda de Leftwich Templin, A.B. & B.S. in Ed. '14, A.M. '15, Ph.D. '26, is the author of "Two Illustrious Pioneers in the Education of Women in Missouri—The Sibleys," published by Lindenwood College. The pamphlet includes material used by Dr. Templin in an address delivered at the re-dedication of Sibley Hall, last October. Dr. Templin is the Lindenwood Centennial Historian.

Mary Turner, President of the local chapter of Theta Sigma Phi, is the author of "The Idea's the Thing," in the December issue of "The Matrix," the official publication of Theta Sigma Phi.

"Bagdaddies," the eighth annual show given by the students of the School of Journalism was a big success and all concerned deserve congratulations, especially those WONDERFUL girls.

Pi Lambda Theta News Letter of October contains the following interesting information about their members: Lycia Martin, B.S., A.M., U of Mo., holder of Ella Victoria Dobbs Fellowship for 1926-1927, is in Columbia University.

Dorothy Kaucher, A.B., U. of Mo., is studying at Cornell University. A delightful play of Dorothy's was published last spring.

Minnie M. Brashers, A.M. University of Missouri, is doing graduate work in the University of North Carolina.

Anne Morrison is doing graduate work in Bryn Mawr College; Addie Root is working toward the Ph.D. degree in Brown University.

The representatives of Alpha who are teaching are widely scattered. Minnie Kennedy is teaching Foods in the State Teachers College at Kirksville, Mo. Lucy Simmons is head of the Division of Social Sciences in the same school.

Ida Judith Johnson, formerly of Galloway College, is extension instructor in English in the University of Missouri. Ethel McGinnis is teaching English in Goucher College, Baltimore, Md.

Florence Caton is Supervising Home Economics in the City Schools of Providence, R. I. Montelle Dietrich is teaching home economics in Albuquerque, N. M.

Mrs. Eula Williams is teaching education in the Normal School at Cheney, Washington. Hattie M. Anderson is teaching in the West Texas State Teachers College, Canyon, Texas. Minnie Snelling writes to us from the department of education, Winthrop College, Rock Hill, N. C.

Helen Graham is teaching in the University of Arkansas at Fayetteville; Eleanor McClay in the University of Cincinnati; Mabel Richard in the State Normal School of San Diego, California.

Mary Winchester and Anna Donnelly are both in Kirkwood, Mo., High School. Esther Vinson teaches English in the State Normal School at Normal, Indiana. Jeannette Warden is teaching in the High School of Nevada, Mo.



H. A. Doty

R. J. Forest

football team made the trip to California a few years ago.

W. C. (Bill) Wheeler, B.S. in Eng. '21, Tau Beta Pi, class president of the Missouri engineers of Chicago, is engineer of equipment, Chicago Surface Lines, 2901 W. End Avenue, Chicago. The Chicago Surface Lines is the largest street railway system in the world, employing over 16,000 men, 3639 passenger cars and over one thousand miles of revenue track, confined in the city limits of Chicago, covering an area of nearly 200 square miles. They carry approximately 5,000,000 people a day. Mr. Wheeler does the technical work for the Shops and Equipments department, which in turn has responsibility for the maintenance, and also the buying or building of all rolling stock. During the past year their passenger department purchased 100 new cars, built to the company's specifications and drawings, prepared in Mr. Wheeler's department and would be duplicates of 100 cars obtained in 1924. The contract was let to three companies to further speed deliveries and it was Mr. Wheeler's duty to see that the cars were built in accordance with specifications. He traveled from one plant to the other co-ordinating with the work of the three inspectors who were responsible for the work at their respective plants. They inspected the electrical manufacturers' equipment before shipping and was busy from the first of July until the middle of October.

Mr. Wheeler married Helen R. Ferguson of Schenectady, in 1924. They have one daughter, Elizabeth Lou, born August 1, 1926. Mr. and Mrs. Wheeler motored from Chicago to Sedalia, Mr. Wheeler's old home, in October for their vacation.

1922

Arthur L. Baermann, A.B. & B.J. '22, Kappa Tau Alpha, Phi Beta Kappa, is with the Detroit (Mich.) Free Press, address, 307 State Hotel, 2nd Boulevard and Milwaukee Avenue.

Frank E. Belden, A.B. '21, B.J. '22, son of Dr. and Mrs. H. M. Belden, has been made editor of the Dry Good Reporter, a fortnightly trade magazine, published in Chicago. Mr. Belden has had experience in editorial work on the Drygoodsman in St. Louis and has been doing advertising work in New York and Florida.

Lourena M. Brown, A.B. '22, Alpha Phi, Harvest Queen 1921 Barnwarming, Bookkeeper for the Board of Education and Organizer, Troost Ave. Methodist Church, Kansas City.

John G. (Jack) Crawford, A.B. '22, Phi Delta Theta, is associated with his father in the Crawford Loan and Abstract Co., 410 S. Ohio Street, Sedalia. Mr. Crawford is treasurer of the Pettis County Alumni Association and one of our most enthusiastic alumni.

Laurance M. (Larry) Dike, B.&P.A. '22, SAE, TNE, Alpha Kappa Psi, President of the Commerce School in '22, is assistant manager of the Kansas City branch of the Missouri State Life Insurance Co., 301, Commerce Bldg., Kansas City. Frank J. McCaslin is manager.

James W. Goodin, A.B. '22, is meteorologist, Signal Corps, U. S. A., McCook Field, Dayton, O. His father, J. H. Goodin, was a former student.

Jessie A. Harris, B.S. in Ed. '22, is living at Nevada, Mo., Box 75.

Frederick Harrison Maughmer, LL.B. '22, A. T. O., Phi Delta Phi, resigned on November 1, as prosecuting attorney of Andrew county, Mo., to become attorney for the Missouri State Life Insurance Co., 1501 Locust Street, St. Louis. He married Ruth Hine of Savannah, Mo., in 1923.

Mrs. W. W. Nielson, formerly Catherine (Billee) Ware, A.B. '22, B.J. '23, arrived in Columbia on November 6, and remained until after Homecoming. Mr. and Mrs. Nielson are living in Santa Fe, N. M., where Mr. Nielson is general manager of the public utilities there. Mrs. Nielson was prominent in school activities, being a member of Kappa Kappa Gamma and Theta Sigma Phi, and was elected honorary colonel by the R. O. T. C. in 1921.

Frank Poston, B.S. in Agr. '22, is teaching vocational Agriculture at Leonardo, N. J.

## CONGRATULATIONS ATHLETES

## Successful Athletes Wear Miller's Shoes.

The Committee on Intercollegiate Athletics awarded M's and gold footballs to 25 varsity football men, the largest number ever given, as follows:

Carl Bacchus, Ted O'Sullivan, Emmet Stuber, Edgar Lindenmeyer, Ray Walker, Ber Clark, Charles Tuttle, Glenn Smith, R. J. Studebaker, George Flamank, Miller Brown, Cliff Morgan, J. L. Tarr, Francis Lucas, Robert Byars, Robert Miller, Sam Gorman, W. Smith, Henry Rosenheim, Carl Lyons, Charles Gann, Hilary Lee, Earl Diemund, Charles Wescott, Enoch Drumm.

These members of the football squad were awarded silver footballs: Willner, Harry Howze, Ivan Runyon, Kellerman, Joe Bryan, J. Castle, Simon Christian, John Fox, Ted Joule, Paul Maschoff, Paul Marvin, Ralph Paul, Bernie Schaff, Carl Schowengerdt, H. B. Adams, James Laws, Earl Beckner, C. L. Miller.

Numeral Jerseys were awarded to 61 members of the freshman football squad.

Five varsity runners were given awards. Capt. Charles Steele was the only man, however, to receive the coveted "M." The four other men on the team to receive awards, Godwin, Morningstar, Lemar and Captain-elect Harper, were given CC sweaters.

The committee voted to award seven freshman cross-country runners with numeral awards, the men being: Hornbuckle, Potter, Scott, Record, Trowbridge, E. Nance and Gottshall.

Roy W. Harper, junior in the College of Arts and Science and first year man in the School of Law, Delta Theta Phi of Steele, Mo., was recently elected captain of the 1927 Cross-Country team. Missouri placed sixth in the Valley Conference.

Missouri placed third in the annual Missouri Valley cross-country run on November 20 at Norman. The meet was won by Iowa State College. Missouri was represented by five men, Steele, the captain, who finished tenth, Lemar, Morningstar, Harper and Godwin, who finished 30th, 31st, 40th and 41st, respectively.

Joe A. Swofford, younger brother of Dan, Weatherford, Tex., was elected Captain of Coach Stankowski's freshman football team.



George Helm

Frank Bihl

Alumni Patronize Alumnus Advertisers

### BASKETBALL CHAMPIONSHIP HO!

Another successful football season has been added to Missouri's athletic history, and now Tiger followers are wondering if the basketball team will continue the good work. The enviable record made by the football team hardly can be duplicated by the basketball team as several factors of unknown strength exist.

In the first place the coach George R. Edwards is new. Most of the players were strangers to him, and many of the details of his style of play were different from those used last year. It will take a large part of the season to work these new features into a smooth system of play.

Six of the present squad have won basketball letters before. These are Yunker, Joyner, and Flamank at forward; Channon and Bacchus at center; and captain O'Sullivan at guard.

Of the remaining players McQueen, Knight, Welsh, and Ruble are forward. Roach, Traynor, Hamilton, Gorman, and Lyons are guards.

The action of Washington University in severing relations with the University of Missouri in all sports because Missouri declined to schedule a football game for 1927 will cause the abandonment of three basketball games between the two institutions. The Tigers were scheduled to play the Bears in an exhibition game in St. Louis on New Year's Eve and in two conference games, one in Columbia on Feb. 19, and the other in St. Louis on March 5.

Missouri will naturally contend, it is said, that the two conference games have been forfeited. If the conference agrees, the failure to play these contests will not affect Missouri's chances for a championship.

In championship games Missouri will play two games each with Drake, Grinnell, Oklahoma, Oklahoma A. & M., and Kansas. The remaining five contests are exhibition games with the Hillyards, National A. A. U. champions, Kansas City Athletic Club, Creighton and two with Nebraska.

Two years ago Missouri finished eighth in the conference. Last year it climbed to fourth. The morale of the present squad is high, and Coach Edwards is optimistic enough to believe that the upward climb will be continued.

### THE SCHEDULE

- Jan. 5.—Kirksville at Columbia.
- Jan. 7.—Hillyards at St. Joseph
- Jan. 8.—K. C. A. C. at Kansas City
- Jan. 14.—Drake at Columbia
- Jan. 15.—Nebraska at Columbia
- Jan. 22.—Grinnell at Columbia
- Jan. 29.—Kansas at Columbia
- Feb. 5.—Drake at Des Moines
- Feb. 11.—Okla. Aggies at Oklahoma
- Feb. 12.—Oklahoma at Columbia
- Feb. 14.—Nebraska at Lincoln
- Feb. 15.—Creighton at Omaha
- Feb. 25.—Okla. Aggies at Stillwater
- Feb. 26.—Oklahoma at Norman
- Mar. 2.—Kansas at Lawrence

Come on, Tigers, we're pulling for you.

## THE CO-OP

Charles E. Barkshire, Propr.

Mark B. Reilly, B.S. in Agr. Engineering, '22, Phi Kappa, District Manager, Pacific Northwest Brick & Tile Association, 906 Lewis Bldg., Portland, Oregon.

Ruth Sumner, A.B. '22, Life Certificate, '25, Secy. Kansas City Testing Laboratory 700 Baltimore Ave., Kansas City.

Norman D. Twichell, A.B. '22, formerly of Ft. Lauderdale, Florida, and recently at Plainfield, N. J., is now at Kansas City, Mo., care of W. H. Cloud, 718 Scarritt Bldg.

1923

Miss Alice E. Hall, B.S. in Ed. '23, Principal, Ferguson (Mo.) High School and Secretary of the Alumnae Association there was recently elected Vice-President of the St. Louis County Teachers Association.

Dr. John S. Knight, A.B. & M.A. '23, Sigma Alpha Epsilon, star athlete, is a physician, 625 Bryant, Kansas City.

Erwen F. McEwen, B.J. '23, who has been with the Japan Advertiser in Tokyo, for almost three years, returned to Columbia for Homecoming and the dedication of the Memorial Tower and the Memorial Stadium. He is now with the Herbert Photos, Inc., News feature, New York City. He visited his sister, Minerva McEwen, a student in the University and then went to St. Joseph to visit his parents during the Thanksgiving holidays.

Wm. Kenneth Merridith, B.S. in Eng. '23, Tau Beta Pi, Logging Engineer, Bloedel Donovan Lbr. Mills, Beaver, Wash.

Arthur T. Weil, B.J. '23, Kappa Tau Alpha, Zeta Beta Tau, Newspaper Correspondent, 304 Albee Bldg., Washington, D. C.

1924

Stanley L. Cytron, B.S. in B.A. '24, Zeta Beta Tau, Sec'y, Cytron Mortgage Co., 110 N. 9th St. St. Louis.

Riley W. Geary, B.S. in Ed. '24, who is teaching in the Phoenix (Ariz.) Union High School, has changed his residence address to 820 N. 3rd Street.

Roscoe Gillaspie, B.J. '24, formerly in the advertising department of the Kirksville (Mo.) Journal, has accepted a position with the advertising department of the Kansas City Star.

Clarence B. Moss, Ag. '21-'24, is Buyer for Sears-Roebuck & Co., Atlanta, Ga., Dept. 17. He married Miss Dorothy Emily Cardwell, former student '24, Delta Delta Delta, in 1925.

Roland F. (Pat) O'Brien, Sigma Nu, '24, was re-elected for a second term of two years as prosecuting attorney of Shelby County, Shelbyville, Mo. Pat's brother, Willard M., is enrolled in the University. Pat is one of our most enthusiastic Alumni.

The General Electric Company, Schenectady, N. Y., writes, that S. M. Schulz, '24, who has, since May, 1926 been employed as a Student Engineer in the Testing Department of the General Electric Company, has accepted a position with the United Alloy Steel Corporation, Canton, Ohio.

A. B. Glover, '26, J. C. Dowell, '26, and S. C. Algermissen, '26, are all employed in the Testing Department of G. E. Mr. Glover is engaged in the testing section of the Radio Department; Mr. Algermissen is in the Rail and Mill-type Motor Department; Mr. Dowell is working in the testing section of the Induction Motor Department.

Irene Silverstein, B.J. '24, assistant to the editor of "Expansion," the official publication of the U. S. Junior Chamber of Commerce, is the author of the leading article in the November issue of that magazine, entitled, "Team of Young Men Led by Rogers Hornsby Wins World's Baseball Championship." Her office is located at 20 N. Main Street, E. St. Louis, Ill.

1925

Berta M. Mohr, B.J. '25, who since August 1, has been on the Houston (Tex.) Post-Dispatch, writes a shopping feature in the Sunday society section under the pen-name of Betty Anne, a tremendous success from the start, running from ten to twelve columns each week, writes as follows "I wonder if you know that a rather recent arrival among the Houston alumni is Tommy Bransford, B.J. '26, who is writing copy in the advertising agency of Dale and Page Rogers, both Journalism graduates.

### TIGERS PLAYED BEFORE 123,000 DURING SEASON

51,500 People Saw Missouri Team Play Here, Brewer's Report Shows.

M. U. RECEIVES \$139,037

### 1926 Football Year Sets New Attendance and Receipts Records for School.

The Missouri Tigers played before 123,000 persons during their 1926 season, 71,500 watching the Tigers on distant fields and 51,500 attending the home games, according to Chester L. Brewer, athletic director.

The Homecoming game with Kansas drew 25,000 persons, the largest crowd that has ever attended a football game in Columbia. The largest attendance at games away from home was at Morgantown, W. Va., where 23,000 persons saw the Tiger win a 27-0 victory. In past years the Tigers have drawn large crowds at Lincoln at the time of the Missouri-Nebraska game, but this year's attendance was second to the crowd that attended the Missouri-Oklahoma game at Norman, some 21,000 crowding the new Oklahoma stadium for the Sooner-Tiger game.

### \$44,471.20 From Other Schools.

Missouri's share of the receipts of the eight games played amounted to \$139,037.35, of which \$44,471.20 was received as Missouri's share and guarantee money from other schools. After dividing the gross receipts with the Missouri Valley schools which played here, and paying outright guarantees to Tulane and Southern Methodist universities, \$94,666.15 remained in the athletic department treasury, which added to the \$44,471.20 realized from other schools gave the complete receipts as \$139,037.35.

After submitting a detailed and itemized account of the season's receipts to the Board of Curators, it is planned to lay aside a large amount of the year's receipts to be placed in the stadium fund, for use in completing Missouri's Memorial Stadium. While it is not probable that any of this year's profit will be spent during the coming year, it is likely that the combined profits of the 1926 and 1927 seasons will be used in the erection of the second unit of the stadium in 1928.

"From every standpoint the 1926 season has been very successful," Mr. Brewer said. "During 1926 the Tigers played to more persons than ever before."

We congratulate Mr. Brewer, Coach Henry and his assistants and the members of the Committee on Intercollegiate Athletics for this wonderfully fine showing.

BERRY MCALESTER

for

## BOONE COUNTY LUMBER CO.

408-10 Broadway

Alumni Patronize  
Alumnus Advertisers.





**CONGRATULATIONS!**  
**Phi Beta Kappas**

Charles S. Parker, Jr., Senior from Kansas City, Mo., in the College of Arts and Science was recently awarded the Rhodes scholarship for Missouri, and will spend three years in the study of law in Oxford University, starting next October. He is a member of Phi Beta Kappa, Beta Theta Pi, Alpha Pi Zeta, and International Relations Club, was President of the Honor Society in 1926, and re-elected to that office in 1927. He won the Golf championship in 1925 and was captain of the Golf team that year. Parker was graduated from the Westport High School of Kansas City, Mo., the fifth graduate of Westport to be named as a Rhodes scholar. Parker's father is a former student of the University and assistant superintendent of the Kansas City public schools. His brother, W. Bahlman Parker is a graduate of the University, A.B. '21, and is registrar and business manager of the school of medicine, Washington University.

Designation of the following University students as the Junior Five of the class of 1927 was made at the annual Founders' Day meeting of the Missouri Alpha chapter of Phi Beta Kappa: Irene Barnes, Meadville; August Maffry, Macon; Charles S. Parker, Jr., Kansas City; Mary Louise Ramsay, Knobnoster; and Frances E. Davis, Columbia.

With the exception of Maffry, who received his degree at the summer commencement exercises, these students are the highest ranking seniors in the College of Arts and Science.

The society was officially notified that the high school scholarship trophy, which it awards annually to the high school whose graduates make the highest grades during their first year, had been awarded to the Keytesville High School for the 1925-26 session.

**Victor - Barth  
Clothing Co.**

I. A. BARTH  
Ninth and Broadway

Alumni Patronize  
Alumnus Advertisers

Two weeks ago I spent the week-end in Dallas, where I was "took" up to the alumni luncheon on the occasion of the S.M.U. game by none other than our old friend, Alfonso Johnson. Don C. Anderson, erstwhile president of Kappa Tau Alpha, and his wife were among those present. Also J. Marvin Wilkerson who graduated in Journalism about '24 or '25. Alfonso Johnson, as you know, business editor of the Dallas News; D. C. Anderson is advertising solicitor on the Journal, owned by the News; Wilkerson is with the Fairchild publication. Have met a Mrs. J. D. Brance here in Houston. She was Lucille Duff when she attended Mizzou in '21-'22. She will be remembered by Lulu Moss Robnett and others. Was so glad to read the whereabouts of Dorothy Belle Flanagan, also Eva Chang, which latter I have been unsuccessfully trying to reach for two years. Dorothy Belle had a pretty poem published in College Humor a few months ago, by the way. Is that enuf news? And you just haven't an inkling how much the Alumnus means to us distant sons and daughters."

Ruth L. Hunt, B.J. '25, is living at 1100 Eddy Street, San Francisco, Cal.

Mary A. McHarg, B.S. in Ed. '25, who is teaching in the Ernst Simonsen Jr., High School, Jefferson City, visited the University on November 13.

Miss Grace E. Petty, B.S. in Ed. '25, a student in the rural education department, Columbia University, Teachers' College was recently elected vice-president of the Rural Education Club. She was formerly demonstration teacher in the Northwest Mo. Teachers' College, Maryville.

Jane Peyton, B.S. in Ed. '25, has changed her address to 1568 Quarrier, Charleston, W. Va. She attended the West Virginia-Missouri football game at Morgantown.

F. G. Rombach, B.S. in C.E. '25, is living at California, Mo.

Alma I. Shipley, B.S. in Ed. '25, Teacher of Physical Education, Kansas City.

Henry P. Strieder, B.S. in E.E., Electrical Engineer, 1017 Olive St., St. Louis.

1926

May Aldridge, B.S. in Ed. '26, of Webb City, writes that she and her mother sat cozily at home and listened to the Homecoming mass meeting, the dedication ceremonies and the football game. She writes: "I felt all the time that the Tigers just must win under such urgent circumstances. I am proud to be a graduate of Missouri University and am looking forward to the time when I may visit it again."

S. B. Avis, A.B. '26, is employed by the Southwestern Bell Telephone Co., of St. Louis, as commercial engineer.

H. W. (Wes) Benton, Jr., A.B. '26, is teaching in the Monson (Mass) Academy. His home was formerly at West Plains, Mo. He writes: "the Alumnus is a great magazine."

Elizabeth Burrell, B.S. in Ed. '26, Phi Lambda Theta, Supervising Teacher, University Elementary School, Columbia.

Roy A. Crouch, Ph.D. '26, is assistant professor, School of Education Florida State College for Women, Tallahassee.

Frances Frazer, B.S. in Ed. '26, Chi Beta Epsilon, Phi Theta Kappa at Stephens College, teacher in the High School, Hardin, Mo.

Ruth McDaniels, A.B. '26, is teaching in the LaGrange (Mo.) Junior College.

George R. Pinkley, A.B. '26, Sigma Gamma Epsilon left school on December 9, to begin work in Oil Geology with the Gypsy Oil Co. of Tulsa, Okla. with headquarters at Clovis, New Mexico. George's father, Roy H. Pinkley, B.S. in E.E. '99, and E.E. 1902, is president of the Milwaukee Alumni Association.

Edwin Moss Williams, B.J. '26, Phi Delta Theta, Sigma Delta Chi, son of Dean Walter Williams will establish a newspaper at Presidio, Texas.

Gerald M. Carney, B.S. in Ed. '26, director of the band and orchestra in the Marshalltown (Ia.) High School, had the alumni office send "Old Missouri" to Mr. Pat Barnes, Director, Radio Station WHT, Wrigley Bldg., Chicago, who used the song in his weather forecast program on December 18.

**Always Alumni  
Headquarters.—**

During the winter months and  
the basketball season  
and on every day of every year;

The Daniel Boone Tavern

a distinctive Hotel

The ball-room of the Tavern has recently been converted into rooms—every room with a bath. Our dining room facilities in the main dining room and in the Coffee Shop are second to none.

We employ in every department many students who are working their way through the University. They are instructed to cater to the Alumni and former students.

Write, wire, or phone me when you want accommodations at the Tavern.

This will be the busiest season in the history of the University.



**DANIEL BOONE  
TAVERN**

Alumni Headquarters

F. W. (Ramrod) Leonard  
Proprietor

ROOSEVELT  
New YorkMOUNT ROYAL  
MontrealRADISSON  
MinneapolisSENECA  
RochesterBLACKSTONE  
ChicagoWILLARD  
WashingtonCORONADO  
St. LouisOAKLAND  
Oakland, Calif.CLAREMONT  
Berkeley, Calif.URBANA-LINCOLN  
Urbana, Ill.SCHARLEY  
PittsburghCALIFORNIAN  
FresnoSAINT PAUL  
St. PaulMULTNOMAH  
Portland, Ore.PALACE  
San Francisco

## MAIN FEATURES OF THE INTERCOLLEGIATE ALUMNI HOTEL MOVEMENT

Interested alumni can secure from a clerk at the desk of each Intercollegiate Alumni Hotel an information leaflet which describes in detail the Intercollegiate Alumni Hotel movement.

At each Intercollegiate Alumni Hotel there will be maintained a card index of the names of all the resident alumni of all the participating institutions. This will be of especial benefit to traveling alumni in locating classmates and friends.

The current issues of the alumni publications of all the participating institutions will be on file at each Intercollegiate Alumni Hotel.

Reservation cards will be available at the clerk's desk in each designated hotel and at the alumni office in each college or university. These reservation cards will serve as a great convenience to travelers in securing advance accommodations.

The managers of all Intercollegiate Alumni Hotels are prepared to cooperate with individual alumni to the fullest extent and are also prepared to assist in the creation of new local alumni associations and in the development and extension of the activities of those already formed.



WALDORF-ASTORIA  
New York



ONONDAGA  
Syracuse



WOLVERINE  
Detroit



BILTMORE  
Los Angeles



BENJAMIN FRANKLIN  
Philadelphia

## THE PARTICIPATING COLLEGES:

The alumni organizations or magazines of the following colleges and universities are participants in the Intercollegiate Alumni Hotel movement:\*

Akron  
Alabama  
Amherst  
Bates  
Beloit  
Brown  
Bucknell  
Bryn Mawr  
California  
Carnegie Institute  
Case School  
Chicago  
City College New York  
Colgate  
Colorado School Mines  
Colorado  
Columbia  
Cornell  
Cumberland  
Duke  
Emory  
Georgia

Goucher  
Harvard  
Illinois  
Indiana  
Iowa State College  
James Milliken  
Kansas Teachers' College  
Kansas  
Lake Erie  
Lehigh  
Louisiana  
Maine  
M. I. T.  
Michigan State  
Michigan  
Mills  
Minnesota  
Missouri  
Montana  
Mount Holyoke  
Nebraska  
New York University

North Carolina  
North Dakota  
Northwestern  
Oberlin  
Occidental  
Ohio State  
Ohio Wesleyan  
Oklahoma  
Oregon  
Oregon A.  
Penn State  
Pennsylvania  
Purdue  
Radcliff  
Rollins  
Rutgers  
Smith  
South Dakota  
Southern California  
Stanford  
Stevens Institute  
Texas A. and M.

Texas  
Union  
Vanderbilt  
Vassar  
Vermont  
Virginia  
Washington and Lee  
Washington State  
Washington  
Wellesley  
Wesleyan College  
Wesleyan  
Western Reserve  
Whitman  
Williams  
Wisconsin  
Wooster  
Worcester P. I.  
Yale

\*In most instances both the alumni organization and the alumni magazine are participating as a unit.

## INTERCOLLEGIATE ALUMNI HOTELS:

Roosevelt, New York  
Waldorf-Astoria, New York  
University Center,\* New York  
Copley Plaza, Boston  
University Center,\* Boston  
Blackstone, Chicago  
Windsor, Chicago  
University Center,\* Chicago  
Benjamin Franklin, Philadelphia  
Willard, Washington  
Radisson, Minneapolis  
Biltmore, Los Angeles

\*To be built in 1926-27

Palace, San Francisco  
Olympic, Seattle  
Seneca, Rochester  
Claremont, Berkeley  
Onondaga, Syracuse  
Sinton, Cincinnati  
Wolverine, Detroit  
Multnomah, Portland, Ore.  
Sacramento, Sacramento  
Californian, Fresno  
Lincoln, Lincoln, Nebr.

Oakland, Oakland, Cal.  
Lycoming, Williamsport, Pa.  
Mount Royal, Montrea.  
King Edward, Toronto  
Coronado, St. Louis  
Bethlehem, Bethlehem, Pa.  
Urbana-Lincoln, Urbana, Ill.  
Saint Paul, St. Paul  
Savannah, Savannah, Ga.  
Schenley, Pittsburgh  
Wolford, Danville, Ill.



OLYMPIC  
Seattle



SACRAMENTO  
Sacramento



SINTON  
Cincinnati



KING EDWARD  
Toronto



BETHEHEM  
Bethlehem, Pa.



LYCOMING  
Williamsport, Pa.



SAVANNAH  
Savannah, Ga.



COPLLEY-PLAZA  
Boston



LINCOLN  
Lincoln, Neb.



WINDSOR  
Chicago

“Knowing How to Dress . . .  
is Merely Knowing Where  
to Buy”

*Boyd's*

BOYD-RICHARDSON · SAINT LOUIS

It is so comfortable  
to GO  
*on the*



*To and from  
Columbia.*

From *all-aboard* to  
journey's end, you will  
find on the Katy, a  
courtesy, a helpfulness  
and a welcome that  
will impress you with  
an appreciation of your  
patronage.

# Ten Reasons Why



—they all  
travel between  
**St. LOUIS**  
and  
**Kansas City**  
on the  
**Webash**

Trains from  
Kansas City  
9:00 am.  
1:30 pm.  
9:00 pm.

Trains from  
St. Louis at  
9:03 am.  
2:00 pm.  
9:00 pm.

Lv. Delmar Ave.  
15 minutes later



H. E. WATTS,  
Passenger Traffic  
Manager

Shortest Line  
Wonderful Roadbed  
Exceptional Service  
Delicious Meals  
All-steel Equipment  
Club-lounging Car  
—on night train  
Observation-Parlor Cars  
—on day trains  
Courteous Employees  
Modern Sleeping Cars  
Delmar Ave. Station  
—a great convenience if  
you live in the West End.

## WABASH

SERVING SINCE 1838

\*And now two more important reasons. A high class midnight train leaving Kansas City and St. Louis at 11:55 p.m. and arriving at the opposite terminal at 7:30 a.m., effective December 5th.

# *Hotel Mayfair*

Alumni Headquarters in St. Louis

Charles Heiss is the amiable, genial, and courteous manager. He is particularly anxious to give personal attention to University folk, their requests for reservations, and their personal comfort while stopping at his hotel.

Hotel Mayfair is the home of "The Voice of St. Louis, Inc." Radio Station KMOX, one of the largest in the United States. Mayfair guests are especially welcome to the visitor's auditorium, where you can see and hear the artists.



THE MAYFAIR HOTEL  
St. Louis' Newest and Most  
Modern Hotel

Located right in the center of the business, theater and shopping district and convenient to the St. Louis railroad Union Station, street car and bus lines.

Every one of its 400 rooms has a bath and all beds have Simmons Box Springs and Marshall Inner-Spring Mattresses.

All rooms have outside exposure, circulating ice water, electric fans, large closets, bed lamps and other unusual features.

The last word in modern hotel construction and unsurpassed service. Rates from \$3.00.

Guests of the MAYFAIR will long remember with pleasure its wonderful cuisine.

In comfortable and luxurious appointments the MAYFAIR is matchless.

# American Color Engraving Co.



Artists, Designers  
Photo-Engravers

*For All Printing  
and Advertising Purposes*

914 Pine St.

St. Louis, Mo.

## ARE YOU PREPARING A TEXT BOOK OR LABORATORY MANUAL?

*Many years' experience in printing for the University of Missouri has prepared us to do a class of work with which most printing houses are not familiar. Text books, laboratory manuals, scientific publications, works in some foreign languages, are included in this class. Monotype equipment, experienced compositors, excellent presswork, produce printing that is of higher than average quality. Of as much importance, perhaps more, is our careful attention to details which insures accuracy.*

*We invite inquiries from persons who have in mind the publication of something along this line.*

WRITE US ABOUT YOUR SCHOOL CATALOG

### HERALD-STATESMAN PUBLISHING COMPANY

J. W. CAUDLE

F. H. SCOTT  
Columbia, Missouri

A. J. SNEDAKER

## HARRIS'

## HARRIS'

### Big Winter for Eating at Harris'

Thousands of alumni and former students did their eating at Harris' during the football season and they all enjoyed the food provided by the proprietors, A. A. (Duck) Millard and Stanley Sisson.

These boys have settled down for a long, hard winter of heavy eating by visiting alumni and former students.

Nothing gives them more pleasure than to see a lot of hungry alumni troop in their place during the winter season, while they are in Columbia for basketball games and for other alumni activities.

All the Farmers' Week visitors will make eating Headquarters at Harris.'

Don't fail to see Stanley Sisson and Duck Millard when go into Harris.'

## HARRIS'

## HARRIS'