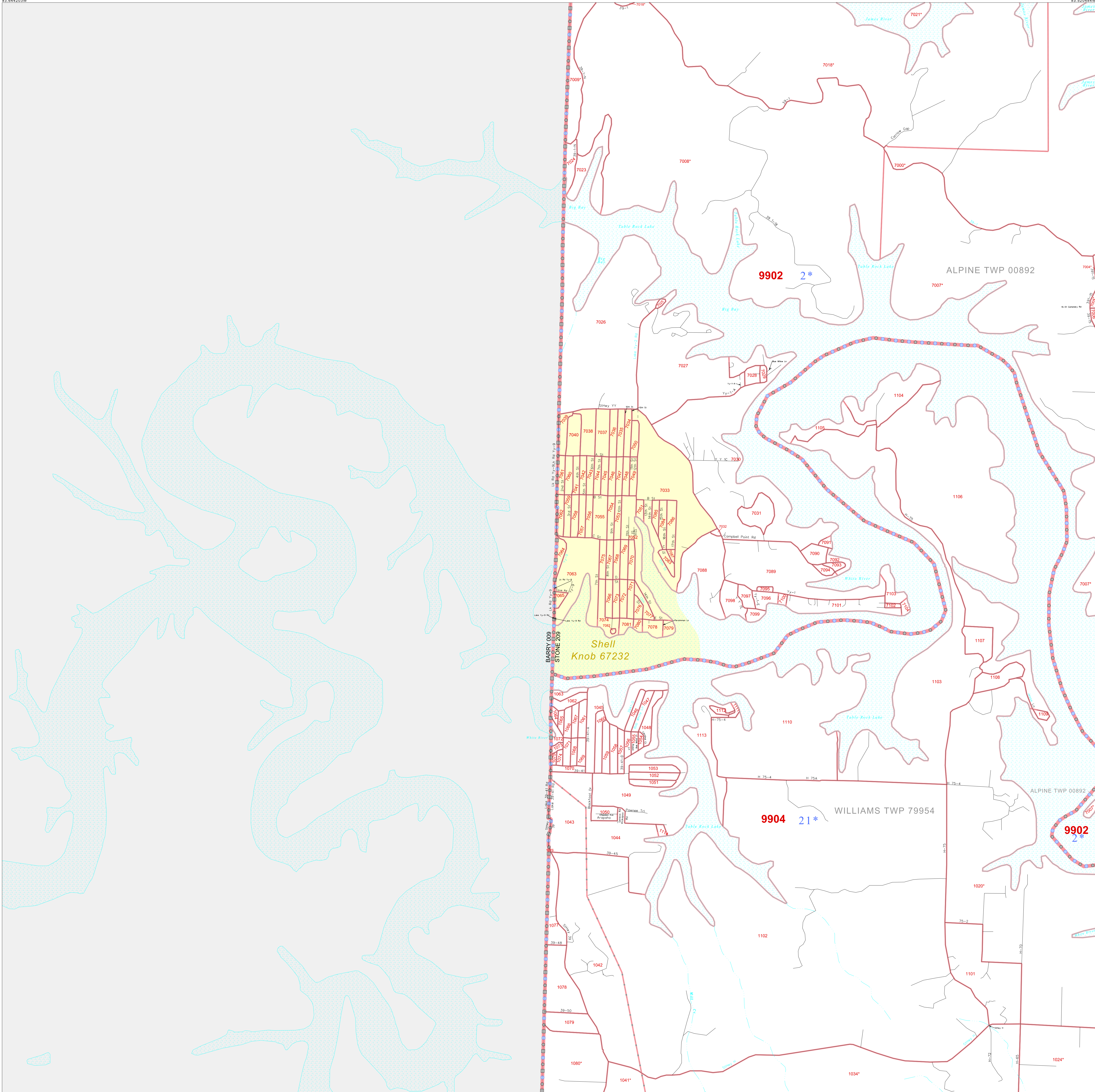


P.L. 94-171 COUNTY BLOCK MAP (CENSUS 2000)

36.647516N
93.644203W

36.647516N
93.644203W



GEOGRAPHIC AREAS LEGEND

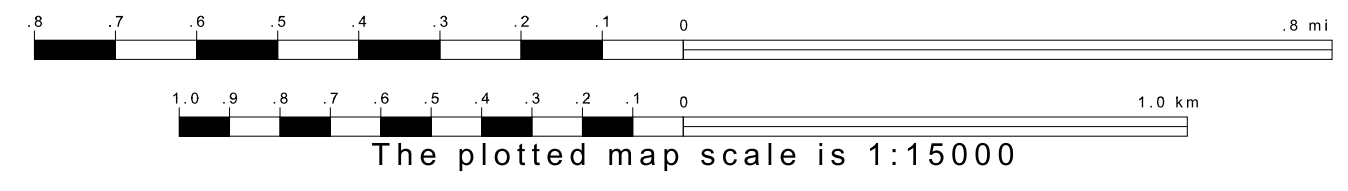
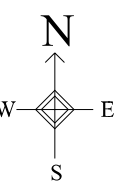
SYMBOL	NAME STYLE
*****	INTERNATIONAL
///////	STATE
#####	COUNTY
□□□□□	MINOR CIVIL DIV. ¹
■ ■ ■ ■ ■	Incorporated Place ²
■ ■ ■ ■ ■	Census Designated Place ²
.....	Corporate Offset Boundary
.....	Voting District ³
.....	Census Tract
.....	BLOCK ³

1 A "*" following a place name indicates that the place is coterminous with a MCD. A "-" indicates that the place is also a false MCD. In both cases, the MCD name is shown only when it differs from the place name.
 2 A "*" following a VTD code indicates an actual voting district. Its absence indicates that the VTD is a pseudo voting district or no information is available as to its status.
 3 A "*" following a block number indicates that the block number is repeated elsewhere in the block.

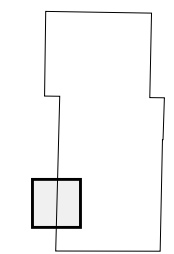
Inset Out Area

36.547949N
93.644203W

36.547949N
93.644203W



Sheet Location within County



Key to Adjacent Sheets

10	11
13	14
16	17

ST: Missouri (29)
 COU: Stone (209)
 SHEET 13 OF 18 PARENT SHEETS

