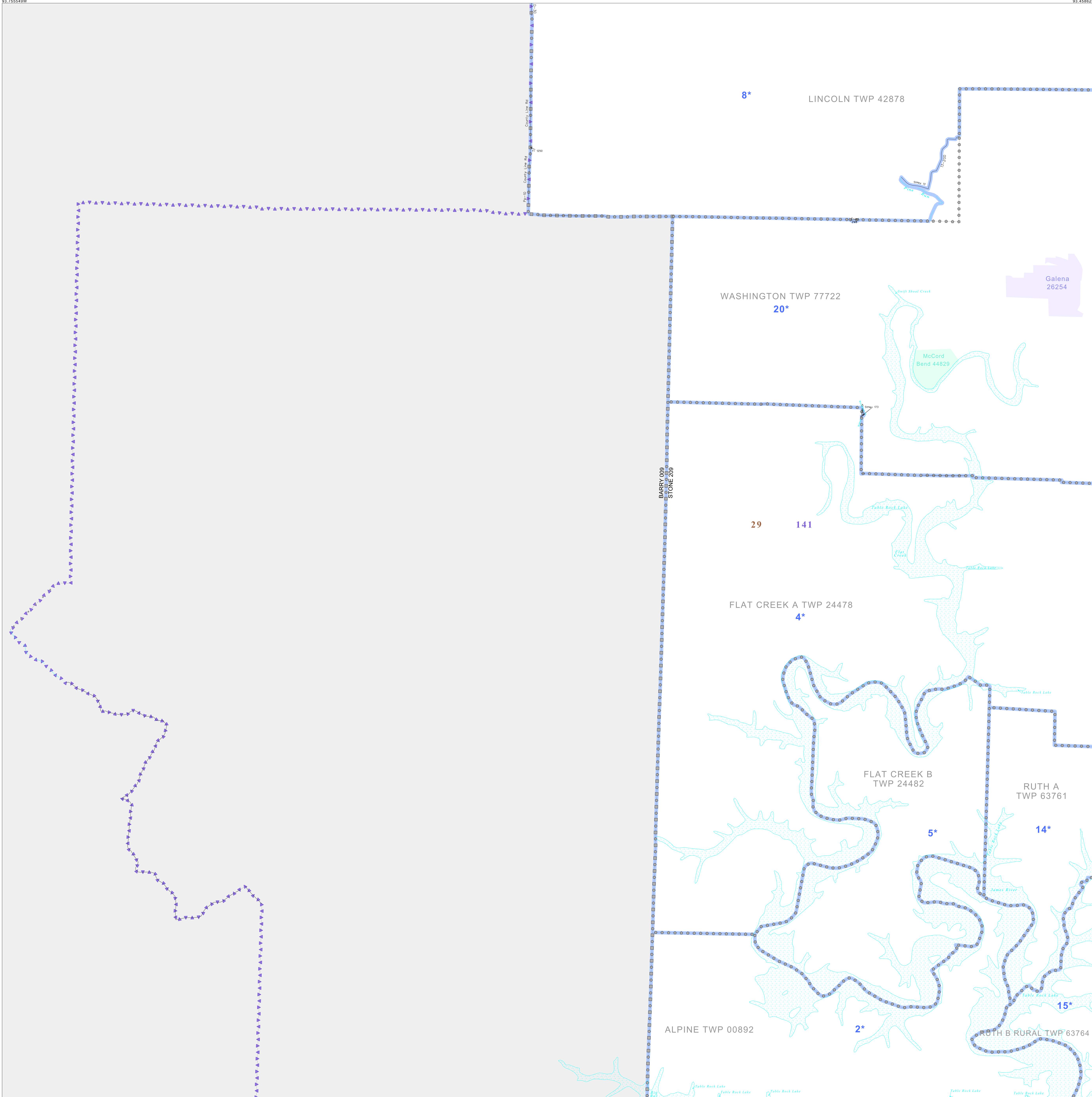


P.L. 94-171 VOTING DISTRICT/STATE LEGISLATIVE DISTRICT OUTLINE MAP (CENSUS 2000)

38 868564N
93 755497W

38 868564N
93 458625W



GEOGRAPHIC AREAS LEGEND

| SYMBOL | NAME STYLE |
|-------------|--------------------------------------|
| ***** | INTERNATIONAL |
| ////// | STATE |
| □□□□□□ | COUNTY |
| ○ ○ ○ ○ ○ ○ | MINOR CIVIL DIV. ¹ |
| ■ ■ ■ ■ ■ ■ | Incorporated Place ¹ |
| ■ ■ ■ ■ ■ ■ | Census Designated Place ² |
| ■ ■ ■ ■ ■ ■ | Voting District |
| ● ● ● ● ● ● | SLD-Senate |
| ▲ ▲ ▲ ▲ ▲ ▲ | SLD-House |
| □ □ □ □ □ □ | Minority |
| □ □ □ □ □ □ | Inset |
| □ □ □ □ □ □ | Out Area |

Abbreviation Reference: AIR - American Indian Reservation; SDAISA - State Designated American Indian Statistical Area

¹ A "*" following a place name indicates that the place is coterminous with a MCD. A "-" indicates that the place is also a false MCD. In both cases, the MCD name is shown only when it differs from the place name.

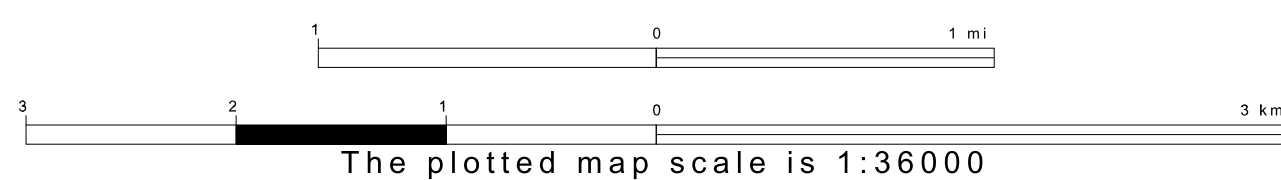
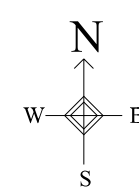
² A "*" following a VTD code indicates an actual voting district. Its absence indicates that the VTD is a pseudo voting district or no information is available as to its status.

Voting Districts

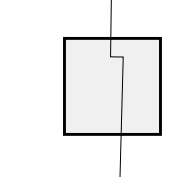
| Code | Name |
|------|-----------------------------|
| 2* | Alpine Voting District |
| 4* | FlatCreekA Voting District |
| 5* | FlatCreekB Voting District |
| 8* | Lincoln Voting District |
| 14* | RuthA Voting District |
| 15* | RuthB Rural Voting District |
| 20* | Washington Voting District |

38 827603N
93 755497W

38 827603N
93 458625W



Sheet Location within County



Key to Adjacent Sheets

| | |
|---|---|
| 1 | 2 |
| 3 | 4 |
| 5 | 6 |

ST: Missouri (29)
COU: Stone (209)
SHEET 3 OF 6 PARENT SHEETS

