

P.L. 94-171 VOTING DISTRICT/STATE LEGISLATIVE DISTRICT OUTLINE MAP (CENSUS 2000)

40.130158N  
93.422193W

40.130158N  
93.216139W



GEOGRAPHIC AREAS LEGEND

SYMBOL	NAME STYLE
*****	INTERNATIONAL
//////	STATE
□□□□	COUNTY
○○○○	MINOR CIVIL DIV <sup>1</sup>
■ ■ ■ ■	Incorporated Place <sup>1</sup>
■ ■ ■ ■	Census Designated Place <sup>2</sup>
—	Voting District
● ● ● ●	SLD-Senate
▲ ▲ ▲ ▲	SLD-House

Military  
 Inset  
 Out Area

Abbreviation Reference: AIR - American Indian Reservation; SDAISA - State Designated American Indian Statistical Area

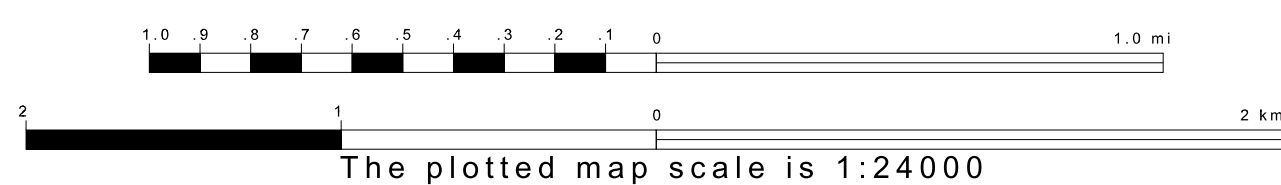
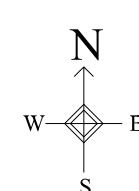
<sup>1</sup> A "\*" following a place name indicates that the place is coterminous with a MCD. A "-" indicates that the place is also a false MCD. In both cases, the MCD name is shown only when it differs from the place name.  
<sup>2</sup> A "\*" following a VTD code indicates an actual voting district. Its absence indicates that the VTD is a pseudo voting district or no information is available as to its status.

Voting Districts

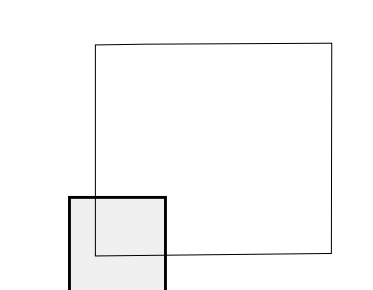
Code	Name
1*	Browning Voting District
6*	Humphreys/Taylor Voting District
11*	Pinkeshin/Massachusetts City Voting District

39.970947N  
93.422193W

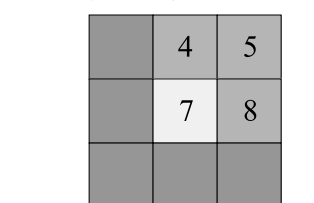
39.970947N  
93.216139W



Sheet Location within County



Key to Adjacent Sheets



ST: Missouri (29)  
 COU: Sullivan (211)  
 SHEET 7 OF 9 PARENT SHEETS

