

SUPPLEMENT TO
THE MISSOURI ALUMNUS

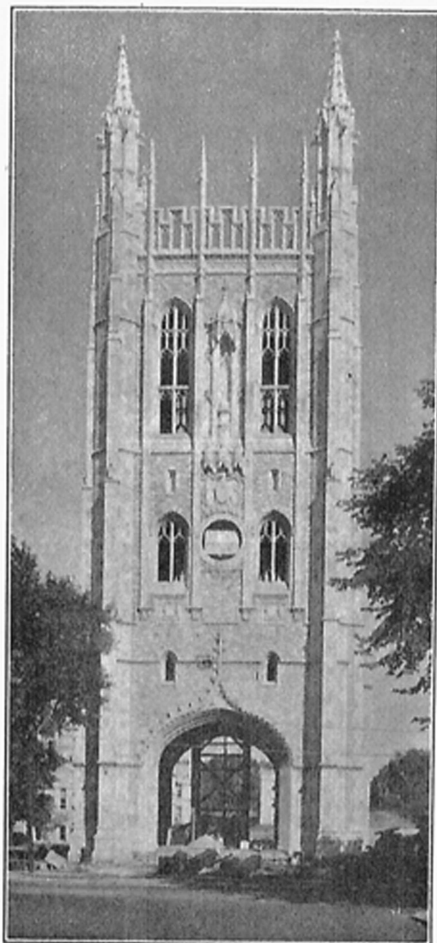
VOL. XV

NOVEMBER, 1926

No. 3

HOME COMING

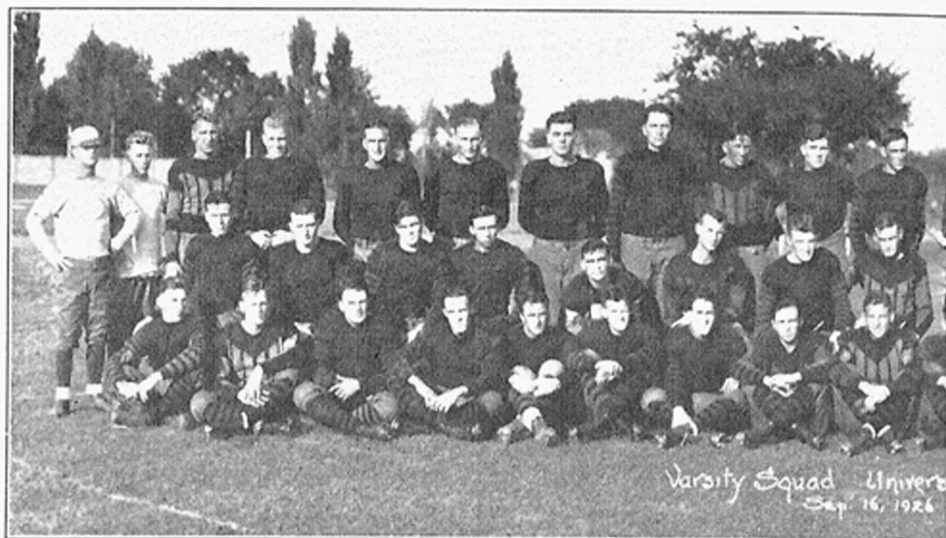
19



26

BRING THIS PROGRAM WITH YOU

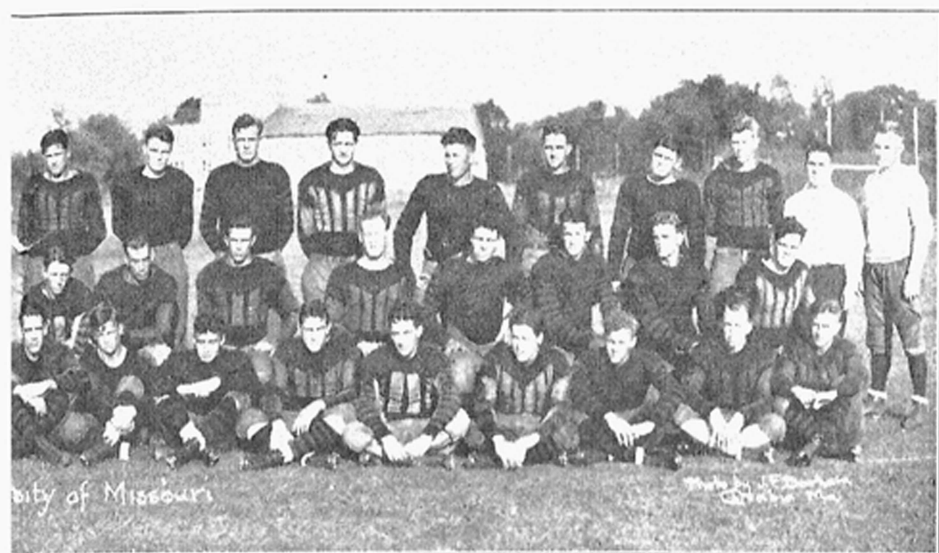
TIGER



PROGRAM

FRIDAY, NOVEMBER 19, 1926

- 2:30 p.m.—Missouri-Kansas Freshman Football Game to Benefit the Walter Camp Memorial—Rollins Field.
- 4 to 6 p.m.—Y.W.C.A. and W.S.G. Tea—Y.W.C.A. House.
- 7:15 p.m.—Mass Meeting—Rollins Field. (In case of rain—University Auditorium.)
- 8:30 p.m.—Missouri-Kansas Glee Club Concert—University Auditorium.
- 9:00 p.m.—1926 Homecoming Frolic—Rothwell Gymnasium.
- 9:00 p.m.—Informal Reception for Alumni—Women's Gymnasium.



SQUAD

PROGRAM

SATURDAY, NOVEMBER 20, 1926

- 8:00 a.m.—Breakfast: QEBH, Harris'—Mortar Board, Inglenook.
- 8:00 a.m.—Missouri-Kansas Rifle Meet—Jesse Hall.
- 9:00 a.m.—Class Reunions in Respective Schools.
- 10:00 a.m.—Formal Dedication of the Memorial Tower and Memorial Stadium (45 minutes)—Memorial Tower.
- 11:30 a.m.—M Men's Luncheon—Harris'.
- 12:15 p.m.—Former Student Presidents' Luncheon—Harris'.
- 1:30 p.m.—Brief Ceremony at the Memorial Stadium.
- 2:00 p.m.—Missouri-Kansas Football Game—Memorial Stadium.
- 6:00 p.m.—Mystical Seven Dinner—Harris'.
- 9:00 p.m.—Homecoming Dance—Rothwell Gymnasium.

A MESSAGE TO MEMORIAL SUBSCRIBERS

My last Homecoming message closed with these words: "*Team work wins for the Tigers and it will win for us.*" We have scored and we are well in the lead, but we have not won. The fine team work that has characterized the Memorial Stadium Campaign must be kept up. Some of you have done all that you promised. Some of you have not met our expectations. Because of this, our game is lagging and we may lose after all, unless you brace up, and do your part. Will you not keep your promise to "Old Mizzou" and get into the game at once?



Campaign Director.

