

# The Missouri Alumnus



*Armistice Day was observed in special ceremony at the Memorial Tower. Col. John W. Wright and Major John C. Wyeth were in charge of the arrangements. Prof. J. W. Hudson was the speaker. Rev. M. N. Waldrip pronounced the invocation and benediction. The boys of the R. O. T. C., the War Mothers, the University Band and several hundred students and townspeople were in the audience.*



**B**urger-Baird engravings are the kind that arouse favorable attention - particularly if they are made from Burger-Baird drawings.

That is to be expected from the finest and largest plant west of Chicago.

**Burger-Baird**  
Engraving Co.

10th and WYANDOTTE  
KANSAS CITY, MO.

# THE MISSOURI ALUMNUS

Vol. XVIII. No. 3

NOVEMBER, 1929

Columbia, Mo.

## McReynolds Suggests Alumni Give Serious Consideration to Constructive Work Done by Survey Commission



Allen McReynolds, A. B. '01, Attorney of Carthage, Mo., a member of Governor Caulfield's Survey Commission, in charge of investigating the needs of the University and recommending means of providing needs.

The last General Assembly of Missouri enacted an act providing that the Governor should appoint what is known as the Survey Commission. The purpose of that commission was to make "full and complete examination and survey of the financial and revenue resources and needs of the state and the several departments of the state government and of the grounds, buildings, equipment, facilities operations and needs of the state eleemosynary, penal and educational institutions and of the public school system and of the facilities afforded to each child to secure an education." The act provided that the Commission should be comprised of seven members, two from the Senate, two from the House of Representatives and three non-legislative members. Soon after the approval of the act the Governor made his appointments and in doing so gave an excellent geographical distribution over the state. The Commission was at once organized and certain work assigned to the various members. The personnel of the Commission along with the work assigned was as follows:

Theodore Gary, Macon, Missouri, chairman of the Commission and in charge of survey of financial resources and tax matters. Sen. William R. Painter, Carrollton, Missouri, penal institutions. Hon. Claude B. Ricketts, St. Louis, Missouri, eleemosynary institutions. Hon. Langdon R. Jones, Kennett, Missouri, common schools. Fred Naeter, Cape Girardeau, city schools. Sen. Manvel Davis, Kansas City, teachers colleges, schools for the

blind and school for the deaf. Allen McReynolds, Carthage, Missouri, University of Missouri and the School of Mines.

Immediately after the organization of the Commission expert assistance was obtained in all branches of the work. To assist in the financial Survey of the state Griffenhagen and Associates were employed. These gentlemen have made surveys of the financial situation in a number of states and are now installing a system in Connecticut as a result of their work. They are working under the direct supervision of Mr. Gary and have assembled a large amount of data and will make definite recommendations for the rehabilitation of the state finances.

Senator William R. Painter procured the assistance of Warden Thomas of the Ohio State Penitentiary and several other authorities on penal work in his examination of the state penal institutions. The penitentiary is overcrowded, the Reform School at Booneville in bad condition. Recommendations are being made for the curing of the ills which prevail in those institutions.

The educational group procured as directors of the survey of educational systems of Missouri Dr. Strayer and Dr. Engelhardt of Teachers College Columbia University, New York. These gentlemen have had very wide experience in this character of work and have been engaged in the thorough analysis in the condition of educational affairs in Missouri. They are appraising the common school system also the institutions of higher learning in this state. Tentative recommendations are already being considered by the state which will mean a new marked change in improvement in our present school system. The newspapers have already carried reports of some of the conditions found and recommendations under consideration.

The work of the Commission is to be completed by November 30th. It is believed that their work will result in the collection of a very valuable fund of information and recommendations which will look toward the general improvement of conditions in this state. It will undoubtedly require the assistance of the citizens of the state to crystallize the programs they recommend into legislation and it is to be hoped that such assistance will be forthcoming.

### Alumni Board Sponsors Centennial Programs Parents Association Pledges Cooperation.

The Board of Directors of the General Alumni Association presided over by the president, Frank B. Rollins, met with President Stratton D. Brooks the day before Homecoming and following a two-hour discussion the Board approved of the Centennial program, the purpose of which is to aid in completing by the time of the Centennial of the University in 1939 the items recommended as necessary for the University by the State Survey Commission.

The parents Association of the University in Resolutions adopted at their annual meeting on Homecoming Day pledge their cooperation in carrying forward this plan with the Alumni Association and the Board of Directors in an effort to provide for the University by 1939 the items most urgently needed.

The Alumni Board instructed the Secretary to outline a plan for holding biennial alumni meetings of International scope and to hold the first meeting sometime next fall.

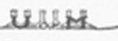
### Buchholz Pres. Parents Association

William Buchholz, Attorney, Kansas City, was elected President of the Parents Association at the second annual meeting in Jesse Auditorium on Homecoming morning. Other officers elected were: Vice-Presidents: Cornelius Roach, Kansas City; Roy H. Monier, Jefferson City; Mrs. Ethel Massey Withers, Liberty; J. C. Morris, Farmington; F. L. Goetz, St. Joseph; Sam E. Trimble, Springfield; W. V. Jeans, St. Louis; James A. Finch, Cape Girardeau; Bob Hill, Executive Secretary.

The members of the Nominating Committee were: Chairman, Judge Kimbrough Stone, Kansas City, and Congressman M. A. Romjue, Macon.

Mr. Roach, the retiring President, presided. Dr. Stratton D. Brooks, President of the University and one of the principal speakers at the meeting, introduced the members of the

## The Missouri Alumnus



Established 1911

R. L. (BOB) HILL, Editor and Manager

Officers of the University of Missouri Alumni Association.

Frank B. Rollins, LL.B., '11, Columbia, President. Cleveland A. Newton, St. Louis, First Vice-President. Miss Calis B. Varner, St. Joseph, Mo., Second Vice-President. R. L. (Bob) Hill, B.S. in Ag. '32, M.S. '33, Columbia, Secretary. S. F. Cooley, A.B. '30, Columbia, Treasurer.

Board of Directors composed of representatives of Alumni Associations of Divisions in the University: Agriculture, C. A. Helm, Columbia, Mo.; Engineering, M. F. Weinbach, Columbia; Law, John Coy Hour; Education, H. H. Herber, St. Louis, Arts, Guy V. Head, Columbia; Journalism, Robert S. Mann, New York; Business and Public Administration, Royal D. M. Bauer, Columbia; Medicine, Dr. A. W. Kumpshelm, Columbia; Graduate, Ralph Watkins, Columbia; Fine Arts, H. W. Joyner, E. Lansing, Michigan.

Subscription to the Alumnus is \$3 a year. Life Subscription is \$45.

Changes of address should be received by the Missouri Alumnus before the 25th of the month to insure prompt delivery of the magazine for that month.

Checks, drafts and money orders should be made payable to the Missouri Alumnus and all business correspondence should be so addressed. Address all news items to the Editor of the Missouri Alumnus, 217 Jesse Hall, Columbia, Mo.

Should a subscriber wish to discontinue his subscription notice to that effect should be given before its expiration. Otherwise it is assumed that a continuance of subscription is desired.

Members of Alumni Magazines Association.

THE MISSOURI ALUMNUS—Published ten months each year by the sons and daughters of the University of Missouri. Entered as second class matter October 8, 1912, at the postoffice at Columbia, Mo., under Act of March 3, 1909.

University Board of Visitors, the members of the Board of Curators and the University Deans.

Marshall Craig, captain of the basketball team, and president of Blue Key, the student service club, spoke for the students.

Allen McReynolds, Attorney, Carthage, member of the Missouri State Survey Commission, in charge of determining the needs of the University and suggesting means of providing these needs, was the speaker of the day.

The members of the Resolutions Committee, Chairman Bert Clark, Chillicothe, and Congressman Joe J. Manlove, Joplin, after listening carefully to the address by Mr. McReynolds prepared a resolution requesting the members of the Parents Association to give them more time to deliberate in the preparation of resolutions strong enough and adequate enough to cover the constructive suggestions outlined by Mr. McReynolds. Three days later they submitted the following resolution:

WHEREAS, The Honorable Henry S. Canfield, Governor of Missouri, proposed to the last General Assembly the enactment of a law providing for an examination into the needs of the

penal, eleemosynary and educational institutions of the state and of the public schools and a study of the revenue resources of the state, and

WHEREAS, The Legislature with practical unanimity enacted such a law delegating broad powers to a commission to conduct a survey of the various state agencies, and

WHEREAS, The program thus provided for has received the united support of all agencies affected, and

WHEREAS, The Governor, under authority of the Legislature, has appointed a commission of outstanding citizens of the state composed as follows: Mr. Theodore Gary, chairman; Senator William R. Painter, Senator Marvel Davis, Representative Claude B. Ricketts, and Langdon Jones, Mr. Fred Naxtor and Mr. Allen McReynolds, and

WHEREAS, The membership of this commission both by its personal integrity and ability and by its record of public service in state affairs has inspired the confidence of the entire state, and

WHEREAS, The Commission has launched a program of constructive study of the state's problems and has called to its aid the best recognized experts in the United States, and

WHEREAS, We regard the movement as the most constructive conception that has ever been presented to the people of Missouri and one calculated to produce results most beneficial to the entire commonwealth, and

WHEREAS, We recognize that any enterprise designed to improve the conditions of any institution must be founded upon a consideration of the interests of all agencies,

THEREFORE, be it resolved by the Parents Association of the University of Missouri in its annual meeting assembled that we heartily commend the constructive statesmanship of the Governor and the Legislature as exemplified in the enactment of the law and the appointment of the Commission and that we hereby pledge ourselves to a hearty co-operation with the work of the Commission and to the support of its recommendations.

### 25TH ANNIVERSARY '04 REUNION GREAT SUCCESS

The reunion of the 1904 class of the University of Missouri was held on the morning of October 26, 1929, in room 225 Jesse Hall, the old Administration Building. This meeting was called by Mr. Tom K. Smith, who was appointed the chairman of a committee for arrangements for the reunion, by our Alumni Recorder, Mr. Bob Hill.

Mr. Smith in a very informal way—a way which characterized the whole meeting—proceeded to nominate and have elected as temporary chairman, Mrs. W. T. Nardin, formerly Mary Ellen Conway. Mr. Eugene Fair, who is now president of the Missouri State Normal at Kirksville, was then elected permanent President for the meeting, and Mrs. W. T. Nardin, Secretary. Accordingly Mr. Jas L. Hamilton

of St. Louis, an engineer, moved that the class meet again five years hence at the same time. Mr. Hamilton, however, accepted the amendment by Mrs. Hardin to the effect that the meetings be every year. This amendment was seconded and unanimously carried. It then became necessary to elect officers for the ensuing year. It was done in a steam roller fashion, but the method seemed satisfactory. The following officers of the class of 1904 of the University of Missouri for the year 1929-30 are: President, Tom K. Smith of St. Louis (Mr. Smith was nominated by Mr. Romjoe on the theory that the members of the class in case of financial difficulties may appeal to this warm-hearted member, who is now President of Boatmen's Bank of St. Louis); First Vice-President, Cliff Langsdale, Kansas City; Second Vice-President, Mrs. W. H. Goodson, Liberty; Third Vice-President, J. L. Hamilton, St. Louis; Treasurer, Earl F. Nelson, St. Louis; (this latter gentleman, because of his unusual University activities, said to relate, arrived too late to make a speech. Everybody regretted this greatly!).

Mrs. Goodwin suggested that at our next reunion we should gather at luncheon before going to the game, her idea being that it be a quickly served informal affair.

There were in all 26 members present, many of whom brought "Hopes O' Tomorrow" with them. Those in the University wore white ribbons with the words "Hope O' Tomorrow" written on them.

The following are names and addresses of those present. It was generally felt that we did not have quite enough time to visit.

Albert J. Campbell, 510 S. Ohio, Sedalia; J. M. Chandler, 1806 Pine St., St. Louis; E. C. Constance, 428 Custom House, St. Louis; Jas. T. Davis, Boatmen's Bank Bldg., St. Louis; Eugene Fair, State Teachers' College, Kirksville; Laura Coontz Franklin, Carrollton; Ralph J. Finley, 705 Olive St. Louis; C. E. Garey, 8th and Broadway, Columbia; Dan T. Gray, Fayetteville, Ark.; Jas. L. Hamilton, 1806 Pine St., St. Louis; Geo. L. Hawkins, 911 Locust, St. Louis; Mrs. W. H. Goodson, Liberty; Wm. S. Hogsett, 1016 Grand Avenue Temple, Kansas City; Cliff Langsdale, 922 Scarritt Bldg., Kansas City; Earl F. Nelson, Boatmen's Bank Bldg., St. Louis; Chas. C. Robinson, 315 No. 12th, St. Louis; Congressman Milton F. Romjoe, Macon; Laura A. Searcy, Stephens College, Columbia; Walter J. Shellenberger, Hutchinson, Kan.; Earl B. Smith, Ames, Ia.; Tom K. Smith, Boatmen's National Bank, St. Louis; Arthur T. Smith, Bureau of Chemistry and Soils, Washington, D. C.; C. J. Walker, 1916 Boatmen's Bank Bldg., St. Louis; J. L. Woodress, 1806 Pine St., St. Louis; Hans Wulff, 421 Wainwright Bldg., St. Louis.

The meeting adjourned to meet again at the Homecoming game in 1930.

(Now, next page please.)



# Report on Ames, Drake, Nebraska and K-Aggie Games

By J. Phillip Hamel

The strength furnished by almost unlimited reserves, developed painstakingly over a period of several years, has carried the University of Missouri football team through the first half of its season with two victories, a tie game and a single defeat by a single point, and the Tigers, still in perfect physical condition are ready to launch the final three and a half weeks of their campaign which bring them into action against Washington, New York and Kansas on successive Saturdays, and against Oklahoma on Thanksgiving Day. The Oklahoma game is the only appearance on the home gridiron remaining.

With the usual preliminary non-conference game lacking, the Tigers plunged into the midst of their conference season at Ames, Ia., October 15, and battered to bits the Iowa State College eleven to win, 19 to 0. It was the most convincing victory that a Missouri team has scored over an Iowa State aggregation in a decade.

A week later, at Columbia, the Henry men, apparently still smarting under last year's surprising one-touchdown defeat at the hands of Drake University, administered to the Bulldogs much the same sort of a drubbing that they had given Iowa State a week earlier. Missouri won 20 to 0. It was a victory of manpower, the Missouri coaches pouring fresh reserves into the game in a steady stream, until, at the end, the Bulldogs were on the verge of collapse.

Then came Nebraska. What a game and what a homecoming. It was a perfect field and a perfect day. Two great football teams clashed. Missouri manpower was matched with Nebraska manpower, and as Gwinn Henry on one side of the field fed a steady flow of fresh backfield men and well-rested forwards into the game, so did Dana Bible from the other side of the field.

Missouri scored seven points early in the fray, and held the lead with tenacity, checking the Nebraskans in the line and smothering their passing attack. It was a Missouri day. Then, with only four minutes of play remaining, the Nebraska passes which hadn't worked against a keen Missouri defense all afternoon suddenly began to connect. Perhaps the Huskers had outpowered the Tigers after all, for the Missourians couldn't stop in those last four minutes the same plays they had been stopping all afternoon. Nebraska matched the Missouri touchdown, and a moment later matched the extra point. The two teams left the field in a hopeless deadlock, 7 and 7.

A week later Missouri went down to defeat before Kansas State, 7 to 6, in a game which promises to go down in the Big Six record book as the greatest upset of the season. The Aggies came to Columbia as un-

derdogs, and all likelihood of their winning appeared dissipated when their star halfback, Alex Nigro, was sent to the hospital here with an infection a few minutes after they arrived. But loss of Nigro was a spar that made the Kansans only the more grim in their defense. They stopped the Tigers after one touchdown on the spongy field, and then, in the closing minutes, when a Missouri pass, intercepted by an Aggie fullback, gave the opportunity for a touchdown, they snatched it with an 80-yard run, and made good the extra point which meant victory.

The work of two veterans has been outstanding in the four games which make up the first half of the Missouri season. They are John Waldorf, captain and quarter back, and Ray Smith, third of the line of Oklahomans who have monopolized the position of center on the Missouri eleven through three student generations. Waldorf, weighing 204 pounds, passes superbly, carries the ball well, is almost without equal in backing up the line and blocking, and is a field general with few peers.

Smith is a natural snapper back, but that is the type of work that draws few comments from the spectators. It is his uncanny knack of diagnosing plays that carries him to dozens of deadly tackles in every game that puts and keeps him in the spotlight. When he roves up and down behind a defensive line it bodes ill for the opposing offense.

Ball carriers always gain more than their share of the limelight, but when honors are passed out for this season, there will be no forgetting two newcomers, Johannngmeier and Derry. They are two of the hardest men in the Big Six for an opposing team to stop, both of them are excellent forward passers, and Johannngmeier's punting is long, accurate, and, what is more important still, is consistent.

Two more veterans, Schaff in the backfield, and Brayton at guard, have also gained claims to distinction. Schaff rarely carries the ball, but his deadly blocking is to no small degree responsible for the gains of his teammates, and Brayton's work at leading the plays has also had its part in Missouri's yardage.

The Missourians were complete masters in their victory over Iowa State. They outscrimmaged the Cyclones, more than two yards to one, and in forward passing their gains were by a margin of seven to one. The Tigers went scoreless during the first quarter, but there was no doubt of the Missouri superiority from the moment of the kickoff, with the Tigers staging two important advances down the field in the first period.

The first Missouri touchdown against the Iowans came early in the second quarter. Gaining the ball in

midfield, the Tigers swept into their opponents' territory when Dills took a pass from Waldorf and zig-zagged to the Iowa State 23-yard line. He and Waldorf and Derry took turns at lugging the ball, until the Tiger captain smashed across the goal line.

The second Tiger counter came as a result of a 77-yard march down the field, after the Tigers had held the Iowans for downs on the Missouri 23-yard line. Dills, Derry and Waldorf bucked the line, Waldorf passed to Dills and Dills passed to Waldorf, and then Derry slashed through center to score.

The honors for the third touchdown went to Frank Bittner, halfback, playing his first game of varsity football. He checked a desperate Iowa State passing attack and galloped some 30 yards for a touchdown. The extra point came from Warden's toe.

The Missouri victory over Drake was a point more convincing, as scores go, and the summary showed Missouri's domination nearly as great. The Tigers scored a touchdown in each of the first three quarters. The first came in the opening minutes, when Waldorf hurled a pass to Hursley, who raced across the Bulldog goal in a 50-yard gain. In the second period Ray Smith recovered a Drake fumble on the Bulldog 30-yard line, and Dills sprinted for a touchdown with perfect interference on the next play. And in the third quarter the Tigers held the Iowans for downs on the Missouri 14-yard line and then plunged and passed their way up the field until Gladden took a pass across for a touchdown. Waldorf and Dills each counted an extra point, while the third opportunity was uncapitalized.

The Missouri-Nebraska game was a hammer and tongs contest of a nature that has seldom been witnessed at Columbia. In past years Missouri has almost without exception been overshadowed by the Cornbaskers in point of power, and when the Tigers have won, their victories have been for the most part traceable to smarter football. That was not the case this year. Matching the Husker manpower man for man and pound for pound, the Tigers battled through a furiously spectacular game in which brain was pitted against brain and brawn against brawn.

For three quarters of that contest there was no doubt of Missouri's superiority. The Tigers quenched a furious early onslaught of the Huskers in the opening minutes and took things in charge, advancing to the shadow of the Nebraska goal, only to lose the ball on downs just as the first period ended. But the Nebraskans were forced to punt from behind their goal and when the ball went out of bounds

(Now page 76, column 3)

## WITH THE ALUMNI ASSOCIATIONS

## LAW

James A. Potter, Jefferson City, was elected President of the Law alumni at their annual meeting in Tate Hall on Homecoming morning. Other officers: First Vice-President, Lynn Webb, Kansas City; Second Vice-President, Russell L. Dearmont, Cape Girardeau; Third Vice-President, Judge Chas. L. Henson, Springfield; Fourth Vice-President, W. M. Raines, Memphis; Secretary-Treasurer, H. H. Blair, St. Louis. Representative on Board of Directors of the General Alumni Association, John Coy Boar, Columbia.

There are about 900 alumni of the University of Missouri Law School. The alumni date back to 1877. 650 of the 900 are actively practicing law in Missouri.

About 137 attended an Alumni luncheon given at Kansas City during the meeting of the Missouri Bar Association on September 27th.

An Alumni luncheon was given at Memphis, Tenn., on October 24th, for those attending the meeting of the American Bar Association. About 12 Missouri men attended, including Dean Jas. L. Parks and Prof. Frank Chambers of the School of Law, President R. B. Oliver, Jr., Lawrence DeMuth of the Law Faculty of the University of Colorado, Boulder, A. B. Knipmeyer, LL.B. '02, Attorney of Memphis, was in charge of the meeting.

#### Law School Foundation Makes Annual Appropriations for Prizes in Honor of Professor Tiedeman and Deans Martin and Lawson

At a meeting of the Trustees of the Law School Foundation, held during Homecoming, an annual appropriation was made to enable the Law Faculty to establish prizes in honor of Professor Tiedeman and Deans Martin and Lawson.

Dean Martin, a thorough legal scholar, an eminent lawyer and a former Commissioner of the Supreme Court of Missouri was Dean of the Law School from 1889 to 1902. Dean Martin was the author of a scholarly text on "Procedure at Common Law" and the compiler of one of the early case books on the subject of "Equity." Dean Lawson, a legal scholar and writer of exceptional ability, was Dean of the Law School from 1902 to 1910, and Acting Dean from 1913 to 1914. Among his writings on legal subjects were his texts on "Contracts" and "Bailments" and his great work, "American State Trials" (not fully completed at the time of his death.) Dean Lawson was the compiler of a number of case books.

Professor Tiedeman was a teacher in the Law School from 1881 to 1891. He was a fine scholar and writer and a very eminent lawyer. Lawyers and students are familiar with his texts on "Real Property" and "Limitations of Police Power." The Tiedeman Prize is offered by Hon. Edward J. White, LL.B. 1891, of St. Louis.

Alumni and former students of the Law School will be pleased to learn that the Foundation has arranged for the perpetuation of the memory of these professors of the Law School. As its annual income increases it is the hope of the Foundation that these prizes may be expanded into memorial research scholarships which will not only perpetuate the memory of these men, but will stimulate scholarship and research among law students and enable the Law School and the Faculty to pursue additional research into various fields of Missouri law.

The trustees announced that subscriptions of Jas. E. Nugent, LL.B. '05, Kansas City, for \$1000.00 and of Edwin E. Huffman, LL.B. '08, of St. Louis has increased the Foundation's endowment pledges to about \$12,000.

The trustees report they feel that as the work and purposes of the Law School Foundation become fully known to the alumni and former students of the Law School, they will make generous contributions both to its endowment fund and its annual working fund.

All endowment, or annual pledges or contributions should be sent to Prof. J. C. Bour, Columbia, Missouri, Secretary of the Foundation. Hon. Edward J. White, of St. Louis, is Chairman, and R. B. Price, Columbia, is Treasurer.

## Ag Alumni

Eighty alumni and former students of the College of Agriculture met at the first annual dinner on the evening of October 15, Kings-Way Hotel, St. Louis, during the week of the National Dairy Show. Glenn G. Davis was chairman of the Committee on

#### Washington, D. C. Alumni To Hold Weekly Luncheons

Dr. Chas. R. L. Halley, 1801 Eye St., N. W., Washington, D. C., Secretary and Floyd F. Hanly, President of the Washington, D. C. Alumni Association announce that their organization will hold weekly alumni luncheons for alumni and former students each Wednesday at the University Club. All former Missourians are requested to attend regularly and a most cordial invitation is extended to visiting alumni and former students and members of the University faculty to attend these luncheons when in Washington.

This action by the Washington alumni is certainly to be commended. These weekly luncheons will go far to cement a feeling of comradeship and loyalty and doubtless many good things will come to the University as results of these weekly meetings. It is to be suggested that other alumni associations in the larger centers will adopt a similar plan.

Arrangements composed of the following: Wave P. Hays, B. M. Lide, O. E. Allen, and R. A. McCoy. The speakers were Dr. Stratton D. Brooks, President of the University; F. B. Mumford, Dean of the College of Agriculture; H. L. Kempster, Chairman of the Department of Poultry Husbandry; A. C. Ragsdale, Chairman of the Department of Dairy Husbandry; Dr. J. W. Conaway, Chairman of the Department of Veterinary Science; E. A. Trowbridge, Chairman of the Department of Animal Husbandry; D. H. Deane, St. Louis and the following alumni from outside of the state: J. W. Wilbur, Purdue University, Lafayette, Ind.; Arthur C. Page, Hugh D. Triplett, Chicago; John M. Wilson, Sturgis, Mich.; Frank B. Astroth, New York City; D. L. Fourt, Boise, Idaho; Marion G. McClelland, Louisville, Ky.; E. M. Harmon, Des Moines, Ia.; A. C. Baltzer, E. Lansing, Mich.; H. L. Shrader, Washington, D. C.; P. M. Brandt, Corvallis, Ore.; Ernest L. Anthony, E. Lansing, Mich.; O. E. Reed, Washington, D. C.; Ben W. Tillman, Belleville, Ill.; C. M. Long, Chicago; Edwin G. Woodward, Taconic, Conn.

Otto S. Conrades, Vice-President of the St. Louis Material and Supply Co., headed a table reserved for the Farm House boys. Others present were: Norval C. Allen, Kirksville; Dave Meeker, West Plains; Oscar W. Meier, Clayton; Frank Stonner, Huntsville; Mr. and Mrs. L. F. Wainwright, Kolla; John Crosser, Bloomfield; Mr. and Mrs. Carl H. Pittenger, Grays Summit; Mr. and Mrs. J. E. Ratter, George W. Catts, Kansas City; Mrs. Glenn G. Davis, Jefferson Barracks; Clyde H. Snider, S. F. Seism, C. R. Meeker, Albert H. Leonard, H. G. Newman, Maud M. Pittenger, Harold Lemar, Leland S. Wells, Frank Vesser, Harold Hanser, Dorothy Mumford Coleman and Mr. Coleman, St. Louis; Robert L. Tumbleton, J. W. Myers, Jas. E. Crosby, Jr., Dr. O. S. Crisler, veterinary department, Harry A. Herman, Warren Gilford, E. W. Henderson, and Bob Hill, Columbia, Toastmaster.

The same committee will have charge of the second annual dinner of this nature next year. The oldest alumnus present was Dr. Conaway. The youngest person present was James Gibson Rutter, member of The Hope O' Tomorrow club, born September 2, 1929, son of Mr. and Mrs. Rutter.

Ira Drymon, Lees Summit, was elected President of the Ag alumni at their annual meeting at Harris' October 24, 1929. Other officers: 1st Vice-President, Gene Moses, Joplin; 2nd Vice-President, L. W. Thieman, Aullville; 3rd Vice-President, W. T. Angle, Kansas City; 5th Vice-President, O. E. Allen, St. Louis; Sec'y-Treas., J. M. Regan, Columbia; Representative on Board of Directors of General Alumni

Association, C. A. Helm, Columbia; Ag Editor, Sam H. Shirky, Columbia; E. A. Bousberry, retiring President, presided. The speakers were Dean F. B. Mumford, H. R. Nelson, Independence; H. Chas. Cox, Rockport; Chester G. Starr, Bloomington, Ill.; Dan T. Gray, University of Arkansas, Fayetteville; F. B. Rollins, Columbia; O. E. Allen, Agricultural Commissioner, Chamber of Commerce, St. Louis; Norton H. Shepard, Columbia; L. E. Slate, Columbia; T. R. Longlass, Mellaine, A. C. Ragsdale and T. J. Talbert, Columbia.

C. A. Helm, Bob Hill, L. E. Slate, Ira Drymon, all former Farmers' Fair Managers, were appointed to arrange a reunion of all Ag alumni of the 25th anniversary of the Farmers' Fair next spring. The Farm House fraternity will celebrate their 25th anniversary at the same time.

#### M Men

The M Men's Homecoming dinner was held at the Tiger Hotel at eleven-thirty Saturday noon. About seventy-five were there, including some wives and children. Walter C. Goodson of Macon was elected President next year. Oak Hunter and Coach Schulte made short talks, but the meeting was most informal. Carl Ristine of Lexington presided as President this last year.

#### The John Pickard Dinner

The dinner honoring Dr. John Pickard was held on the evening of October 11 at the Tiger Hotel and was attended by 225 persons from every section of the State. Dr. J. C. Jones, president emeritus, was toastmaster. The following were speakers: Walter Williams, Dean of the School of Journalism, who spoke on the Guest of Honor as a Member of the Faculty; Frank B. Rollins, as a Member of the Memorial Committee; Hugh Stephens, as a member of the State Capitol Decoration Commission; Forrest C. Donnell, as a member of the Masonic fraternity; Dr. Stratton D. Brooks, as a member of Society. Dean Walter Miller read the inscription on a parchment scroll which was passed among those present by Misses Dorothy Ann Nowell and Mary Jane Hill. Everyone present signed the scroll and it was presented to Dr. Pickard by Prof. A. M. Defoe. Mrs. Pickard and Miss Caroline Pickard were present. Prof. Horace F. Major was in charge of the decorations. The musical program was furnished by Miss Dorothy Vetter, Rogers Whitmore, John Parrish and Franklin B. Launer. In addition to the speakers the following were at the speakers table: Prof. W. H. Pommer, Columbia; J. P. Jamieson, one of the University architects, St. Louis; Theodore Gary, Kansas City; Senator W. R. Painter, Carrollton; Samuel R. Freet, Kansas City. There were special tables at the dinner for members of the Acacia fraternity, representatives of the student body, the members of the Memorial Committee, and for Masonic groups from various sections of the State.

(See page 78 please)

#### J. L. Phillips, T. E. '80, C. E. '90



J. L. Phillips, T. E. '80, C. E. '90, 4958 Highland View Ave., Los Angeles, sailed on October 5, for a trip to all the countries in South America. He will return on December 8.

#### E. I. Rogers, B.S. in C. E. '97



E. I. Rogers, B.S. in C. E. '97, K. A., whose home was in Cameron, Mo., chief engineer of the Peoria & Pekin Union Railway Co., Peoria, Ill. since August, 1921, was on October 11, 1929 appointed President of the Road. He has been in railroad work almost all of his working years. He was born in St. Joseph, Mo., on August 30, 1876. In 1897 he started his railway career being employed as a section laborer. Later he served as assistant division engineer and as road master on construction and maintenance in the south.

Word has been received that Fred W. Marbut, former student in the University, is now a reporter on the staff of the Panama American, a morning newspaper published in the capital city of the Republic of Panama.

While in the University, Marbut was enrolled in the College of Arts and Science and was a member of Phi Kappa Psi.

#### Mrs. Hallett, Rutgers Graduate



Mrs. Ralph K. Hallett, formerly Blanche K. McNeerney, A. B. & B. S. in Ed. 13, Kappa Kappa Gamma, was awarded the degree of M. S. at Rutgers in June in the first June Commencement in the 165 years of Rutgers classes in which any women were permitted. The Halletts formerly lived in Carthage but are now living in Wilmington, Dela., 222 Geddes St., where Mr. Hallett, C. E. '13, Delta Upsilon, is a civil engineer with the Hercules Powder Co. The Halletts have two sons, Ralph, Jr., ten, and Joseph R., eight.



John A. (String) Wear, B.S. in Ag '16, Captain, basketball '16, coach and teacher, Villa Grove, Ill., and his fifteen months old son, John Ross. The latter is planning to be basketball captain senate for this year.

Richard Diemer, Toledo, O., was recently elected President to the student senate for this year.

## ANOTHER "ZEKE" WATKINS



William I. Watkins, Jr., born May 17, 1925, son of W. I. Watkins, B. S. in Ag. '13, formerly of Trenton, Mo., now with the Soil Survey, Bureau of Chemistry and Soils, Washington, D. C. Mr. Watkins married Miss Jessie A. Elder in 1914.

James Doarn, who was enrolled in the University this semester and withdrew recently on account of the death

of his grandfather, has been left his grandfather's estate, valued at \$100,000.



Josephine Ann Sylvester, born October 21, 1927, daughter of John W. Sylvester, B. S. in Eng. '21, M. E. '22, with the York Ice Machinery Corp., St. Louis, and Mrs. Sylvester, formerly Mildred E. Irish, A. B. '23, Mortar Board, Zeta Sigma, of Quincy, Ill.

The Pi Phis have let a contract for a \$85,000 chapter house to be built on Rollins St., on the site of the form-

er home of Mr. and Mrs. John E. Sykes and on the lot adjoining on the west. The house will accommodate 36 girls and will be of colonial style with a frontage of 180 feet.

Miss Betty Stough, Delta Gamma, a student in the College of Arts and Science, one of last year's Savitar Queens, whose home is in Hollywood, Calif., was crowned Harvest Queen at the annual Barnwarming by F. E. Mumford, Dean of the College of Agriculture. The Barnwarming was a big success in every way. Rothwell gymnasium was beautifully decorated, as those who visited the Gym in the afternoon will testify. Those who went to the Barnwarming at night couldn't tell whether there were any decorations at all—the place was so bloomis' dark you had to have a flashlight along to keep up with your program. Kenneth Turk was Manager of the Barnwarming this year and Bernice Stickrod, Secretary-Treasurer, Lee Davis, assistant Manager and Warren Fankhanel, assistant secretary-treasurer.

## RHODES SCHOLAR CANDIDATE

Prof. L. M. Defoe, chairman of the Rhodes Scholarship Committee, has announced the following candidates for the Rhodes Scholarship from the University:

John Henry Caruthers, University City; Stanley Dean Johnson, Kansas City; John Rehner, jr., Kansas City; and Lloyd Brewster Thomas, Columbia.

## To All Our Friends:

**Students!**  
**Townpeople!**  
**Faculty Members!**  
**Alumni!**

We extend thanks and appreciation for your patronage in the past and for the future.

## Visitors:

No trip to Columbia is complete without at least one meal at Harris'

Call us when you want a table reserved, a specially prepared meal, party or bridge reservations.

EAT { Where the Food is Best  
Where the Service is Prompt  
And the Prices are Right

AT

**HARRIS'**

(where the atmosphere of the college town prevails)

So. 9th St., — Columbia

STANLEY SISSON, Proprietor

## WEDDINGS

Kenneth R. Lancaster, B. J. '27, A. T. O., Mystical Seven, Track '25, '26, and '27, record Mo. Valley indoor pole vault and broad jump, boy's secretary, Benton Harbor-St. Joseph Young Men's Christian Association, 233 Michigan St., Benton Harbor, Mich., was married on November 9 to Miss Eleanor Pike of Benton Harbor.

Miss Mabel Hutchinson, former student, Lambda Alpha Chi, graduate of Christian College, and Edwin F. Dameron, former student '21, Beta Phi Sigma, both of Moberly, Mo., were married on July 21, 1929. Mr. Dameron is with Sears, Roebuck & Co., Chicago.

Miss Katherine Whiteley, Kappa Alpha Theta, student in the University last semester, Independence, Kan., and Lee Wardrip of Wichita, were married on July 16, 1929, at the home of the bride's parents. They are at home in Miami, Okla.

Miss Irma Green, A. B. & B. S. in Ed. '27, Zeta Tau Alpha, Mortar Board, Miami, Okla., and A. C. LaFollette of Portland, Ind., both teachers in the Junior High School in N. Vernon, Ind., were married at the home of the bride recently. They are at home in N. Vernon, 716 S. State St.

Helen Baird, B. S. in Ed. '28, Kappa Alpha Theta, prominent in student activities, daughter of Mr. and Mrs. J. H. Baird, Kansas City, and Paul R. Beatty, former student, Delta Tau Delta, of Greenfield, Ia., now of Yonkers, S. D., have announced their engagement.

Miss Frances McKee, '22-'24 formerly employed in the extension division of the university, and Frederick S. Hanna, Jr., '20-'23, son of Dr. and Mrs. W. S. Hanna, were married on September 21, 1929, in Columbia. Mr. Hanna is a captain with the National Guard and is employed with Hopper-Pollard Drug Co., in Columbia.

James Glenn Jordan, B. S. in B. A., 25, son of Dr. and Mrs. J. E. Jordan, Columbia, and Miss Opal M. Zimmerman, of St. Louis, were married there on October 3, 1929.

Earl M. Solel, B. S. in B. & P. A. '26, in the oil business, Mid-Continent Field, Tulsa, Okla., was married on December 26, 1927, to Miss Genevieve Beauchamp of St. Louis. They are at home at 1132 S. Quincy, Tulsa. Mr. Solel formerly lived in Princeton, Mo.

Raymond H. Alexander, A. B. '09, Attorney, Tempe, Ariz., and Miss Nene I. Wooley, B. S. Ohio State '22, were married on August 19, 1929, Riverside, Calif. They are at home at Tempe.

Langston F. Pease, '24, Delta Sigma Pi, West Plains, Mo., and Miss Duff Harlin, were married at the home of the bride's parents in Thayer on October 24, 1929.

John A. Moore, Jr., '21-'24, Sigma Nu, and Miss Marjorie Scott, both of Kansas City, were married on October 28, 1929, at the home of the bride's parents. They are at home at 330 W. 45th St. Terrace, Kansas City.

W. L. (Jack) Horner, B. S. in Ag. '22, Kappa Sigma, Ag. Club, Manager of the Arkmo Lumber Co., Blytheville, Ark., and Miss Eloise Smith of Wheatley, Ark., were married at the home of the bride on October 21.

Miss Catherine Ann Brandt, A. B. '28, Alpha Phi, Alpha Zeta Pi, Delta Tau Kappa, daughter of Otto W. Brandt, Kansas City, and Jean Paul Bradshaw, A. B. '27, LL. B. '29, Beta Phi Delta Phi, President Student Body '26, Mystical Seven, legal advisor of the State Highway Commission, Jefferson City, formerly of Lebanon, Mo., were married on October 17, 1929, at the Alpha Phi House. Miss Virginia Bidwell of Chicago, president of the Alpha Phi chapter, served as maid of honor. The bridesmaids were Miss Geneva Long, of Columbia, and Miss Bernice Stanley, of Kansas City, students in the University. Miss Mary Woodhouse and Miss Esther Brown, both of Kansas City, Virginia Lee Hill, daughter of Mr. and Mrs. R. L. Hill was the flower girl. Milton V. Thompson, of Kansas City, acted as best man for Mr. Bradshaw. The groomsmen were: Frank J. Morgan, Jr., of Kansas City, Henry Depping and Benjamin F. Boyer, of Jefferson City, and Fred May of Warrensburg.

Miss Sally Virginia Juden, A. B. '29, Kappa Alpha Theta, Cape Girardeau, and Ronald S. Reed, senior in the School of Law, Phi Gamma Delta, Phi Delta Phi, St. Joseph, were married on April 10, 1928. They are at home in the Beverly Apts. here.

Miss Edna V. White, '07-'08, and Mr. William Rodgers, both of Moberly, were married there on October 16, 1929. Miss White's brother, Allen, is an alumnus of the University and member of Sigma Nu.

Chas. C. Daniel, Jr., '23-'24, Delta Tau Delta, Independence, Mo., and Miss Agnes E. Hildebrand, A. B. & B. S. in Ed. '27, Pi Phi, Kansas City, were married there on October 26.

George W. Noel, '24, Phi Gamma Delta, and Miss Grace L. Saltmarsh, Gamma Phi Beta, both of Kansas City, were married there on November 9.

Miss Judith Van Dyne, B. S. in Ed. '29, Kappa Kappa Gamma, Sedalia, graduate of Lindenwood College, and George F. Yeaman, Ferguson, were married on September 28, 1929.

Miss Juanita Chostner, Cape Girardeau, and Clark Ellzey, both former students, were married in Columbia on September 19, 1929. They are living in Dallas, Tex., and attending S. M. U.

## BIRTHS

O. W. Bond, A. B. '22, (Phi Psi, Kappa Beta Phi, Tri Chi Razzers) and Mrs. Bond, formerly Marjorie Stickney of Boston, Mass.; Wellesley College '18—announce the birth of a daughter, Barbara, born August 20th 1929 at the Lady Willingdon Nursing Home, Madras, India. "Bondy" has been connected with the Standard Oil Co. of New York in Madras, India since 1922.

Robert R. Glenn, senior in the College of Engineering, Triangle, and Mrs. Glenn, announce the birth of a son, Robert R., Jr., on October 1, 1929, at their home, 505 Conley Ave., Columbia.

John P. Kelley, Arts '12, Special Representative for The Equitable Life of N. Y., 520 Mayo Bldg., Tulsa, and Mrs. Kelley, formerly Florence Katherine Quinlan, a graduate of the University of Michigan, announce the birth of a son, Thomas Joseph, on September 14, 1929, at their home in Tulsa. They have two other children, a son, John Francis, three, and a daughter, Katherine, born January 23, 1928.

Alvin J. Accola, A. B. '15, C. E. '17, Phi Beta Kappa, Sigma Chi, of the National City Co., 55 Wall St., New York and Mrs. Accola, formerly Katherine Mize, A. B. '15, B. S. in Ed. '17, Kappa Kappa Gamma, announce the birth of a son, Robert Daniel, on September 11, 1929. They have another son, Alvin J., Jr., seven and a daughter, Rosemary, four. Mr. Accola visited the alumni office in October on a vacation trip to Denver. It was a great pleasure to see and visit with him.

Harold V. Streeter, B. J. '25, Delta Sigma Rho, Athenaeum, Sigma Delta Chi, with the Associated Press, Post-Gazette Bldg., Pittsburgh, Pa., and Mrs. Streeter, formerly Eula Rustin, Jefferson City, graduate of Christian College, announce the birth of a son, William Ross, on October 7, 1929. They have another child, Robert Ray, born July 22, 1927.

Wm. H. McClay, B. S. in C. E. '11, S. A. E., and Mrs. McClay, formerly Eleanor Asdale, A. B. '14, Kappa Kappa Gamma, announce the birth of a daughter, Eleanor Jane on September 19, 1929, at their home in Dallas, where Mr. McClay is a member of the Construction Company firm of Belows & McClay. The McClays have three daughters and one son.

John Guy Gibson, B. S. in Ag. '21, and Mrs. Gibson of Jefferson City, announce the birth of a son, Tom Price Gibson on October 14, 1929. Mrs. Gibson is the daughter of T. L. Price, '95 former Missouri football star, of Jefferson City.

## DEATHS

Mrs. Pryor T. Scott (Susie Pulliam, A. B. '05) died at a sanitarium in Phoenix, Ariz., April 22, 1929, and was buried in Forest Lawn Cemetery, that city April 25. Death was caused by Tuberculosis, from which she had been a sufferer for five years. She is survived by her husband Pryor T. Scott, A. B. '04, Principal, Buckeye Grammar School, Buckeye, Ariz., and two children, Leonard B. Scott of Williams, Ariz., and Helen M. Scott, now attending Muskogee Junior College, Muskogee, Okla.

Claude W. Gignoux, '08, page 54, Kappa Alpha, member of the firm of Niemann-Gignoux Taylors, St. Louis, died on October 5, at his home, 4374 W. Pine Blvd. He had been in failing health for a year. In the Spanish-American war he was Captain of Company B, first regiment, Missouri National Guard. He was a charter member of the Missouri Athletic Association.

Mr. Gignoux is survived by three brothers, Alexis T. H., Charles and Frank Gignoux; and three sisters. (Now turn to page 76, please)

## STEPHENS COLLEGE

A Junior College for Women  
Columbia, Missouri

Member: The North Central Association of Colleges and  
Secondary Schools

For Publications, Address:

President James M. Wood,  
Stephens College,  
Columbia, Missouri

## Christian College

A Junior College for Women

Columbia

1851-1929

EDGAR D. LEE, *President*


**BUSY BEE  
CANDIES**

*That Candy You Owe Her  
On the Game*

Far be it from us to suggest that you buy her  
anything but the best  
**LADY-LOVE CHOCOLATES**  
are her choice. Get them from  
**HEATH & LIGHTNER**

# The TIGER HOTEL

*Columbia's New Hotel*

Modern — Fireproof

150 ROOMS

THOS. R. BOWEN,

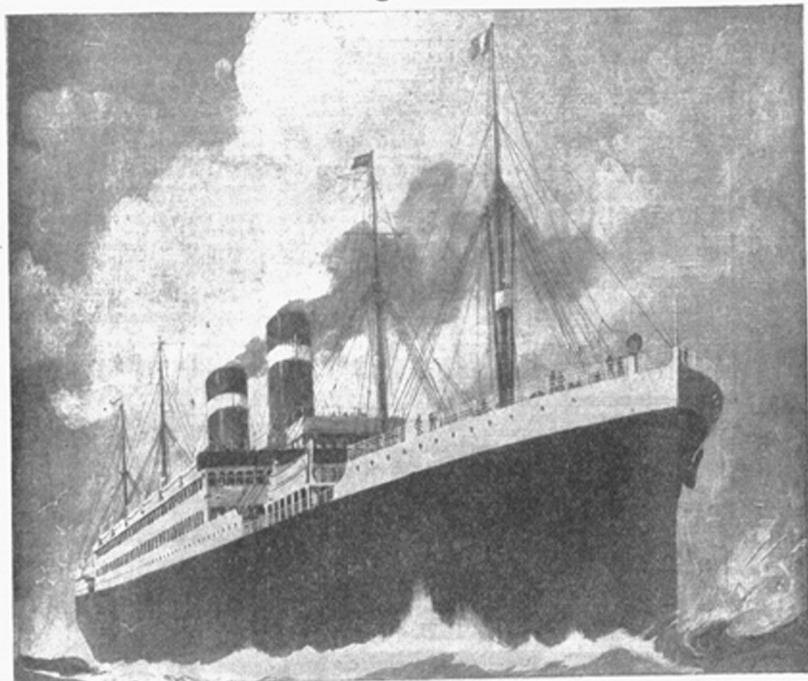
*Resident Manager*

One of the Best Ball  
Rooms in State

*Operated Under  
The Sweet Hotels*

JOHN S. SWEET,  
*President*

# "AMERICA"... Official Flagship of the Intercollegiate Alumni



A ship of great personality—and commanded by a great personality, the famous Captain Fried—has been designated as the official flagship of the 103 college and university alumni organizations which have chosen the United States and American Merchant Lines as the Alumni transatlantic lane to Europe.

On three important sailing dates—June 4, July 2 and July 30, 1930—

the magnificent AMERICA will "go collegiate."

Book now for one of these sailings. Smoke, sip and play the hours away with old classmates... shake hands with old gridiron rivals... pipe the moon up with rollicking college songs... meet 'sons of famous "letter" men, who'll be with you... relive campus days to the soft swish of the waves. A cabin ship, this superfine 21,141-ton liner, so you

live as one great happy family. With finest tourist third cabin accommodations, too.

#### YOUR OFFICIAL FLEET

LEVIATHAN, *World's Largest Liner* . AMERICA  
 GEORGE WASHINGTON . REPUBLIC  
 PRESIDENT HARDING . PRESIDENT ROOSEVELT  
*And direct New York-London service weekly on*  
 AMERICAN BANKER . AMERICAN SHIPPER  
 AMERICAN FARMER . AMERICAN TRADER  
 AMERICAN MERCHANT

For rates, sailings, etc. . . see or write your local steamship agent or alumni secretary

# UNITED STATES LINES

45 BROADWAY, NEW YORK

Miss Elsie and Miss Marie Gignoux and Mrs. J. R. McNeill.

Howard Fred Smith, LaBelle, Mo., age 24, who was a student in the University '25-26, Sigma Nu, was instantly killed, and C. G. Hutchinson, 22 and Clark Robertson, 24, both of Kansas City, were badly injured when their car crashed into a truck on Highway 40 three miles east of Marshall junction on the night of October 25, 1929. Mr. Smith was graduated from William Jewell last August where he was president of the student body. His brother Horace is a graduate of the University and a member of Sigma Nu and his sister Helen is a student in the University and a member of Chi Omega.

Dr. Henry D. Hooker, Associate Professor of Horticulture in the University was found dead by his maid in the bath room of his home in Sunset Addition on Sunday morning, October 27, 1929. Death resulted from accidental electrocution presumably the night before. The electric current which caused the death was transmitted from an electric heater which connected with the bath tub. Dr. Hooker was 33 years old. He came to the

University in 1919. He received a bachelor's degree from Yale University in 1912 at the age of 16 years, a master's degree in 1913 and a doctor's degree in 1915; was a member of Phi Beta Kappa and head of the local chapter of Sigma Xi. He is survived by a brother who is a member of the faculty of the University of Indiana, and Mrs. Hooker.

Cumming Clark, '21-23, Phi Gamma Delta, Webster Groves, Mo., died at his home there on October 8, 1929.

### ENGAGEMENTS

Miss Virginia B. Perrie, former student, Delta Gamma, and Thomas W. Williams, both of Kansas City, have announced their engagement.

Rolla B. Wetzel, A. B. '25, Phi Delta Theta, Attorney and Miss Fern B. Keaton, former student, Gamma Phi Beta, both of Clayton, Mo., have announced their engagement.

Miss Jane Newman, former student, Kappa Alpha Theta, Kansas City, and George B. Fremantle of Franklin, Minn., have announced their engagement.

James Breckenridge, Jr., LL. B. '22, Attorney of Kansas City, son of Mr. and Mrs. J. B. Breckenridge of Columbia, and Miss Leona Petty, Liberty, Mo., former student in Stephens College, have announced their engagement.

Arthur E. Burgher, Jr., '24, Phi Delta Theta, and Miss Elisabeth Swofford, Pi Phi, Kansas City, have announced their engagement.

Carson E. Cowherd, A. B. '17, LL. B. '20, Attorney, and Miss Clara Irene Gould, both of Kansas City, have announced their engagement.

Miss Mildred L. Epstein, former student, and Gus Nenzler, B.S. in Eng. '26, both of St. Louis, have announced their engagement.

### Report on Games

From page 69

on the Husker 28-yard line the Missourians uncorked a trick pass in which Waldorf passed forward to Gladden and Gladden tossed laterally to Dills as he raced around end. The diminutive sprinter carried the ball to the Husker three-yard line, and Derry and Waldorf plunged once each, Waldorf going across for the touchdown. Schaff added the seventh point with a goal from placement.

The Tigers outplayed the Nebraskans so decisively for the remainder of the second period that the visitors did not make a single first down in that quarter, and when the Cornhuskers came back with a furious onslaught at the start of the second half the Missourians were only bewildered for a moment, and rose to check the attack and keep it checked. They stopped the Nebraska backs in the line and broke up their passes until there was only four minutes of play remaining.

Then the Nebraska passes worked, and with a concerted advance of more than 70 yards, which culminated in a pass, Sloan to Hokus, the Corn-

### PROFESSIONAL DIRECTORY

Cherry 1228 Res. Fairmount 6263  
**GROVER C. HOSFORD**  
 Attorney and Counselor at Law  
 3520 Engineers Bank Bldg.  
 Cleveland, Ohio

Box Phone, Central 2500  
 Equitable of New York  
**ERNEST STAUBE**  
 Contracts Indemnifying for  
 Loss  
 to Persons and Property  
 1306 Ambassador Bldg.  
 St. Louis, Mo.

**E. KEMPER CARTER, C. E. '12**  
**ALBERT WATERS, C. C. '12**  
 Materials of Construction  
 The Carter-Waters Corporation  
 Building and Paving Materials  
 2049 Main St. Kansas City, Mo.

Save Systematically and  
 Safely

### BOONE NATIONAL SAVINGS & LOAN ASSOCIATION

204-206 Guitard Building,  
 Columbia, Missouri  
 W. S. St. Clair, Secretary

**GLUE-LOCKED**  
 IMPROVED CORRESPONDENCE ENVELOPES  
 AT NO GREATER COST

Wider Gumming close to the corners seals easily and stays sealed. Wider Flap increases capacity.

Compare this with your own envelopes.

**BERKOWITZ ENVELOPE CO.**  
 KANSAS CITY, MO.

### The Bowling Lumber Co.

18-22 S. 8th St.

Columbia

Phone 2

### JOHN L. PLATT

Electrical Supplies

17 S. Ninth St.  
 Columbia, Mo.

Electrical supplies for all alumni — for alumni patronize Alumnus advertisers

John Platt is an alumnus of the College of Engineering

### The Drug Shop

815 Broadway

W. C. KNIGHT, Prop'r.

Let us overhaul your kodak so you can win some of the \$30,000 Eastman cash prizes.

Alumni Patronize Alumnus Advertisers



liners scored a touchdown. When Sloan kicked the extra point the score was tied and the game was virtually over.

It was a gain of nearly 50 yards, a comparatively short pass from Waldorf to Gladden, and a long sprint by the latter which caught the Aggies napping, that put the Tigers away to a 10-point lead near the close of the first quarter of their game with Kansas State here. But the try for point was wide, and the field was soggy and the Aggies fought grimly. Missouri could not score again.

Then, with only six or seven minutes of the final period to play, and with the Kansas State team pushed back inside its own 30-yard line, Wiggins intercepted Waldorf's pass and raced 80 yards down the sideline for a touchdown. Waldorf and Smith made valiant efforts to stop him, but his interference formed too fast. And when Tackwell went in just long enough to kick the extra point, Missouri had lost a football game, and perhaps a Big Six Conference Championship.

Arthur Langmeier, B.S. in Eng. '18, Glee Club, Phi Mu Alpha, graduate of the McKinley High School, St. Louis, Assistant Director of Sales, Naval Stores Dept., Hercules Powder Co., Wilmington Del., a good friend of Jimmy Lawrence, visited the Alumni office the other day and we are mighty glad to see him. He is going to attend the New York alumni meeting and the game.

Edward Harty Adriance, A.B. '20, Alpha Kappa Psi, Seaboard & Blade, Boonville, spent the summer on the campus of the West National Bank, Kansas City and is enrolled in the Graduate School of Business Administration, Harvard, this year.

Josephine Casady, A.B. '20, Kappa Kappa Gamma, is teaching in San Antonio, Tex., 531 Hollywood.

Harvey B. Carrington, B.J. '20, Glee Club, quartette, Athosman, is a Market Reporter, St. Louis, Daily Reporter, National Stock Yards, Ill.

Cyril Coggins, Journalism '20, is in the advertising business, Philadelphia, Pa. He married Miss Mrs. Simpson, R.J. '20, Alpha Chi Omega, in 1920. They reside in the Florence Garden Apartments, 506 S. 41st St. Cyril Coggins and his wife are in Philadelphia 2520 N. 22nd St. Cyril is finishing headline at Jefferson and his wife is writing advertising copy.

Leslie M. Garrison, M.A. in Ed. Summer Session '20, is Superintendent of Schools, Frankford, Mo. He married Miss Genevieve M. Cottingham, Summer Session '20. Mr. Garrison's sisters, Noble Lee and Lloyd Garrison are alumni of the University. Alvin Grant, B.J. '20, is on the Jefferson City Post Tribune.

Loeda C. Klossman, B.S. in Ed. Summer Session '20, graduate of the Mt. Vernon High School is a Mathematics Instructor, Coffee, Mo. Her sister, Miss Halda, attended the University 1923-24.

Frank W. Wicht, L.L.B. '20, Delta Epsilon, Tri Chi, Blue Key, OEBB, Student President '20-21, graduate of the Joplin High School, is an Attorney, 1701 Liberty Central Trust Bldg., St. Louis.

Geordan Knox, Arts '20, K.A.E., is with the Universal Aid Lines System, Kansas City. John W. McCune, L.L.B. '20, of Latholm, Mo., is practicing law in Tulsa, Oklahoma, with Howard & Ebbel, Inc., 908 Hunt Bldg.

Mrs. Eva B. Waterhouse, formerly Eva B. McAthey, summer session '20, Kappa Delta Phi, who is teaching in the Carrollton, Mo. High School, has read Dr. Jones a subscription to the alumni fund. Mrs. Waterhouse married G. L. Waterhouse, of Bates City, in 1919.

Clayton W. Smith, B.J. '20 Sigma Phi Epsilon, Mystical Seven, prominent athlete, is coaching in the public schools, Ridgeport, Ill.

## VISITING ALUMNI

When you motor to Columbia you'll find our station conveniently located. Just tell the student who waits on you that you're an alumnus and you'll get some real service and attention.

Our comfort station is approved by the State Board of Health.

Our Bureau of Information is 100 per cent. reliable.

Alumni Motorist Headquarters

Alumni Management, Student Labor

## PROCTOR SERVICE STATIONS

No. 1—Price and Broadway

No. 2—U. S. 40 and Range Line

A. M. Cowan, B.S. Ag. '20, Mgr.



NOVEMBER 23

Lv. Kansas City	10:35 p. m.,	12:15 p. m.,
Ar. Lawrence	11:45 a. m.,	1:25 p. m.,

## REGULAR TRAINS

Lv. Kansas City	8:25 a. m.	9:15 a. m.,	10:50 a. m.
Ar. Lawrence	9:55 a. m.,	10:28 a. m.,	11:55 a. m.

## RETURNING

Special leaves Lawrence promptly after game.

George W. Hagenbuch, D. P. A.

Phone Main 7340

Kansas City, Mo.

719 Walnut St.,

SPECIAL  
Round trip fares  
Kansas City  
to  
Lawrence

**\$1.00**

Honored only in  
coaches and chair  
cars.

(Continued from page 71)

**Chicago**

Dr. J. C. Jones, President Emeritus of the University, was the guest of honor and principal speaker at the first fall meeting of the Chicago Alumni Association at the Allerton Club, October 8. Dr. Jones told of the athletic prospects, the construction on the field house, told how substantially the money had been spent for the Memorial Stadium and the Memorial Tower and the prospects for immediate construction to complete the Memorial Union. He gave an outline of the history of the University through its three chief battles—first, the battle for support, under the administration of President Laws, the battle for position under President Jesse and the battle for influence under President Hill, which is still going on. He solicited the help of the Chicago alumni in influence, interest and money and suggested several ways that aid might be given alma mater, especially looking forward to giving her a substantial birthday present on her centennial birthday, ten years hence. Mrs. Stephen I. Langmaid led the singing of OLD MISSOURI. Following the dinner there was dancing and bridge. Jay Barton, A.B. and B.S. in Ed. '13, of the Peoples Gas, Light & Coke Co. is President of the Chicago Alumni Association, and Mrs. Roberta K. Darr, '14-17, Representative, The Equitable Life Assurance Society, 1530 LaSalle St., is Secretary. The next meeting has been scheduled for December 5.

**AGRICULTURE**

Ira Drymon, B.S. in Ag. '18, Manager, Longview Farms, Lees Summit, Mo., is Chairman of the Ag alumni luncheon to be held during the week of the American Royal Live Stock Show in Kansas City on Monday, November 18 at 5:40 in the afternoon at the Hoof and Corn Club, according to E. A. Ikenberry, Independence, Mo. All Ags take notice. Roll call! Bill Angie and Bob Clough will help Mr. Drymon.

**MEDICINE**

Dr. Frank I. Ridge, Kansas City, was re-elected President of the Medical alumni at their annual meeting on Homecoming morning. Other officers Vice-President, Dr. T. Grover Orr, Kansas City, Dr. Peter Poeter, Butte, Mont., Secretary, Dr. C. W. Greene, Rep. on Board of General Alumni Association, Dr. A. W. Kampschmidt. Five directors were also elected as follows: Dr. Howard A. Rusk, five years; Dr. Jas. K. McVay, four years; Dr. E. C. Hohrer, three years; Dr. Tom Fleming, two years, and Dr. Stanley Howard, one year.

There were about forty in attendance.

Dr. Frank G. Nifong reported on the work of the McAlester Memorial Committee and the Medical School Association passed a motion endorsing his report.

Dr. Guy L. Noyes, Dean of the

School of Medicine announces the following of our medical alumni in Philadelphia; Edgar A. Belden, John K. Caldwell, Hugh G. Hamilton, University of Pennsylvania; Cecil H. Coggin, Harold J. Cokely, John R. Kahn, Rollin H. Smith, Jefferson Medical College; and Dr. Fay M. Whitsell, Philadelphia General Hospital.

**Extension**

The third annual Homecoming meeting of the Association of Extension students of the University was held October 26. R. H. Davidson, assistant Director of Extension, presided and gave a short informal talk on the activities of the Extension Division since its establishment, giving particular attention to the growth in the last year. It was moved and seconded that an amendment be made to the constitution, wherein all the members of the Extension Committee be included as honorary members of the Association. The motion carried.

The following officers were elected for the coming year:

Frances Backer, President, Columbia; Emma Grace Geisendorfer, Vice-President, Ashland; Mary Hancock, Secretary, Kansas City.

Miss Backer, the new president, made a few remarks stressing the need of making the work of the Extension Division a more personal matter and suggesting the advisability of greater contact among the Extension students themselves and the Extension students and their instructors.

**B. & P. A.**

Mr. T. S. Vickroy, S. W. Bell Telephone Co., St. Louis, was re-elected President of the B. & P. A. alumni at their annual meeting on Homecoming morning. Other officers: Vice-Presidents, Fred L. Schuster, New York City, W. J. Barnett, Cuba, Mo.; Sec'y-Treas., Paul A. McCreery, Columbia; Rep. on Board of Directors of General Alumni Association, R. D. M. Baner, Columbia.

Dean Middlebush gave the annual report of the School's activity. The registration of the School for this year shows a decided increase over last year. He reported a very successful Commerce Day, April 8, 1929, and that the setting aside of this day has become a part of the School's tradition. An interesting part of the program is the luncheon of all members of the senior class. He reported that there are at present 496 members of the alumni and

**You'll Be Astonished**

at the high type of equipment and service  
to be found  
at each

**Pierce Pennant Terminal**

The features of these terminals include:—

A beautifully appointed dining room in which a delicious table d'hôte dinner is served for one dollar, a la carte dishes at popular price—a soda fountain offering a complete line of drinks and sandwiches—curb service with ample space for parking—luxurious lounge for ladies—men's rest room—free emergency hospital and ambulance service for

motorists—and complete service for your car. The terminals are open 24 hours every day in the year.

**PIERCE PENNANT TERMINALS**

are located near Columbia, Mo., on U. S. Highway 40, and near Rolla, Mo., and Miami and Tulsa, Okla., all on Route 66.

Visit Our Magnificent Hotels at the Columbia, Mo., and the Rolla, Mo., Terminals.

**PIERCE PETROLEUM CORP., St. Louis, Mo.**

Refiners and Marketers—Pierce Pennant Products

that plans have been made to publish an Alumni Directory in the near future, providing the necessary information which is available. The results of the ten year survey program for expansion made by the legislative committee were briefly outlined and each alumnus was requested to give his full support to this project.

Dr. J. H. Rogers spoke as the faculty representative and gave some interesting sidelights on the school activities.

#### Journalism

The Kansas City Journal-Post staff includes many of our alumni and former students as follows:

- George Phillis, Editorial writer.
- Vina Lindsey, Reporter.
- Ed Meisburger, City editor.
- K. P. Middleton, Reporter.
- J. Porter Wright, Assistant Managing Editor.
- Mrs. L. G. Rinkle, Women's section editor.
- Ethel McDonald, Society editor.
- J. Reavis Rea, advertising salesman.
- Milton J. Bauer, advertising salesman.
- Frances Sue Hodge, advertising copy writer.
- Rowena Pierce, advertising saleslady.
- Miss Lennis Young, advertising department.
- Paul Virgil Beckley, proof reading department.
- Mr. Ralph Ellis, editor of the Jour-

nal-Post is one of the University's good friends.

#### Kansas City

Cliff Langsdale, A.B. '04, attorney, 921 Scarritt Bldg., president of the Kansas City Alumni Association, and Dr. Sterrett S. Titus, 1016 Walnut, Secretary, announced that the big alumni party to be held the night before the Kansas-Missouri football game at Lawrence will be held at the Baltimore Hotel Friday evening at 6:30, November 22. Shannon C. Douglass chairman of the Committee on Entertainment and Arrangements, and Dupuy Warrick is chairman of the committee to handle the visits of Missouri's big band to the Kansas City High Schools on that day. This alumni

Cliff Langsdale, Attorney, and Dr. Sterrett S. Titus, President and Secretary, respectively, of the Kansas City Alumni Association, cordially invite all alumni and former students of the University to attend the Kansas City alumni stag party at the Baltimore Hotel at six-thirty on Friday evening, November 22, the night before the big Kansas-Missouri football game at Lawrence. This will be one of the big alumni parties of the year. Don't fail to attend.

meeting in Kansas City the night before the Kansas game when it is played in Lawrence is always a great big fine party. There will be a great attendance of several hundred at the meeting this year. Don't miss the big Kansas City alumni party.

#### Kansas City Alumnae

Miss Ruth Sumner, A.B. '22, Secretary of the Kansas City Alumnae Association, has announced that regular luncheon meetings are to be held on the third Saturday of each month as usual at the Woman's City Club at one o'clock. All Kansas City alumnae, including those of the 1929 class, are cordially invited to attend these luncheons. The Kansas City alumnae are an enthusiastic group of girls who are always doing something worthwhile for the University.

Wm. R. Brown, of the Chas. E. Brown Printing Co., 7th & Central, Kansas City, was recently elected President of the Y. M. C. F. Other officers of that organization who are alumni of the University are: Treasurer, Sidney M. Cooke, Columbia National Bank; 2nd Vice-President, Robert F. Craig, 407 Security Bldg; 1st Vice-President, Kenneth I. Fligg, 1314 R. A. Long Bldg; Directors, John E. Miller, 402 Midland Bldg; Clinton Paddock, 1014 Commerce Bldg; Dupuy C. Warwick, 1415 Commerce Bldg; Secretary Wm. M. Schermes, 220 W. 72nd St.

## CORRECT ACCESSORIES FOR EVENING WEAR

The dress accessories which we display are new and correct, each being based upon the observations of our style reporters at the smartest social functions held here and abroad. Particularly noteworthy this season are the barrel shaped tie, the short and narrow bosom two stud shirt and the backless three button white waist coat. The shirt and waist coat are especially designed for wear with the new high-rise trousers.

BOYD-RICHARDSON - ST. LOUIS

KANSAS  
 vs.  
 MISSOURI  
 at  
 Lawrence, Kan.

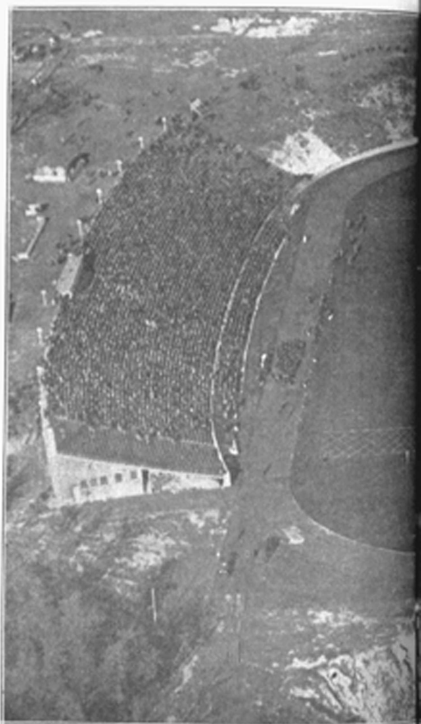
*Saturday,*  
*November 23*

*The advance sale of tickets for this classic indicates the largest crowd in its history.*

Reserved Seats \$3.00

Tickets in the Missouri section may be obtained by application at the  
**TICKET OFFICE**  
 Rothwell Gymnasium  
 COLUMBIA, MISSOURI

FOOT  
 Two Big



*Excursion Rates*  
*Both of*

# BALL

Games Left



All Railroads for  
These Games

## OKLAHOMA vs. MISSOURI

Memorial Stadium  
Columbia, Missouri

---

Thanksgiving Day  
*November 28*

---

*Oklahoma has one of the strongest teams in the Big Six. This traditional game is expected to fill the stadium.*

---

All Seats Reserved \$3.00  
Box Seats \$3.50

---

Orders should be sent at once if the best seats are desired. Address TICKET OFFICE, Rothwell Gym., Columbia, Mo.

**Allen Ferguson Pres. Senior Class**

Allen Ferguson, Sedalia, has been elected President of the senior class, a most responsible job and one which he is well qualified to fill.

Robert Vohs, St. Louis, heads the juniors; Ross Dunwoody, Joplin, the sophomores, and John Carothers, Fort Madison, Ia., is president of the university freshmen.

Only two offices were contested, and those by freshmen.

The other officers—Seniors, Winston Copland, Leeper, vice-president; Ada Spahl, Christopher, Ill., secretary; Merritt C. Potter, Macon, treasurer. Juniors, Burnis Frederick, Union Star, vice-president; Catherine Sharp, Macon, secretary; Lester Packard, Cameron, treasurer. Sophomores, Lawrence Varble, St. Louis, vice-president; Dorothy Andris, St. Louis, secretary; Armand Hanss, St. Louis, treasurer. Freshmen, Marshall Beach, Kansas City, vice-president; Marjorie Mullins, Linneus, secretary, and Robert Martin, Kearney, Neb., treasurer.

**Karl Goetz Cheer Leader**

Karl Goetz, junior in the College of Arts and Science, Phi Delta Theta, St. Joseph, whose father was one of the organizers of the Parents Association, was elected senior cheer leader for this year. Donnell Anderson, A. T. O., St. Louis, Les Elliott, Delta Upsilon, Joplin, and Dik Pritchard, Delta Tau Delta, Gary, Ind., all sophomores in the College of Arts and Science, were elected junior cheer leaders.

**CLASSNOTES**

Thomas B. King, A.B. '38, A.M. '39, our oldest living alumnus, is living in Stephenville, Tex.

Givens M. Horne, A.B. '08, Union Literary Society, is living in St. Louis, 3635 Cape Brillante. He served under General Price in the Civil War. Mr. Horne was born in Kentucky in 1842. In 1889 he married Miss Ollie Powers of Nashville, Ky. They have four sons.

J. H. Owens, '76-'79, banker of Sweet Springs, Mo., enrolled his niece in the University and has another niece in Christian College.

John Johnson, '08, Attorney of Kansas City was here recently on business.

Capitola W. E. See, A.B., S.B., L.B., '09 A.M., S.M., L.M., '92, Government, Astronomer, Mare Island, San Francisco, sailed recently for Lima, Peru, to deliver scientific lectures.

Mattie M. Cunningham, 1900-'03, who is doing social service work among foreigners, Hertsboro, Okla., and her sister, Miss Ethel R. Cunningham, A.B. & B.S. in Ed., '08, who is doing rural church work, Ashby, Miss., visited in Columbia recently.

John W. Wilkinson, L.B., R.B., P.B. '05 in Agricultural Publicity Agent and Field Officer Missouri Pacific Lines, 2196 Missouri Pacific Bldg., St. Louis.

Dr. David W. May, R.S. in Ag. '04, M.A. '06, Rollins Scholarship, is Director of the Public Health Bureau, Department of Agriculture, Mayaguez, Porto Rico. He married Miss Lena Harrison of Bostons City, Mo., in 1906.

Dr. W. W. Bateman, M.D. '02, is a physician, 224 Republic Bldg., Denver.

H. H. Lector, B.S. in C.E. '07, C.E. '09, Sigma Chi, Tau Beta Pi, is with the Bureau of Public Health, U. S. Department of Agriculture, Omaha. He married Miss Gertrude Giesberg of Jefferson City graduate of Stephens College, in 1902. They have two daughters, one of whom, Miss Dorothy is enrolled in the University.

Harry M. Deegan, A.M. '09, Sigma Chi, T. N. E. Union Literary, M. S. O. Debatting

is an Attorney, Oregon, Mo. He married Miss Grace H. Montgomery of Oregon in 1910. They have one son, Robert, lawyer. Thomas N. Dymally, A.T.S., '09, Sigma Nu, Phi Delta Phi, is a member of the firm of Knight, Byratt & Gamble, Investment Bankers, 414 Olive St., St. Louis. He has three brothers named at the Columbia Country Club often and put on quite a foursome.

John L. Gerig, A.B. & A.M., '09 of the Department of Romance Languages, Columbia University, just received a diploma from the Italian Academy of Sciences and Letters of Genoa, informing him of his election as Honorary member of the Academy. Many, many honors have been and are being conferred on Dr. Gerig, much to the satisfaction of his host of friends.

Robert E. Harsh, L.B., '09, Sigma Nu, director of the Art Institute, Chicago, son of Mrs. Emily Harsh, Columbia is in charge of the Fine Arts Department of the World's Fair to be held in Chicago in 1933. He recently visited twenty-five countries in Europe making arrangements for art showings at the Fair.

Dr. C. E. Parkhurst, B.S. '00, M.D. '01, U. of C. Rollins Scholarship in Medicine '06, Sergeant Company "I" Spanish-American War, is a Physician and Surgeon, Houston, Mo. He married Miss E. B. H. H. '08, Phi Delta Kappa, of Slater in 1907. They have four sons and one daughter. Their daughter, Elizabeth, is a graduate of the University.

Chas. L. Benson, L.L.B. '01, Phi Delta Phi formerly Judge of the 24th Missouri circuit, is an Attorney, and member of the firm of Sturgis & Benson, 834 S. Landers Street, St. Louis, Mo. He married Miss Cherry. He married Miss Grace D. Brumback Phi Beta Kappa, of DePaul University. They have one son, Henry, 23.

Gilbert W. Jones, A.B., B.S., Ill. is President of the C. G. & C. H. R. Cape Girardeau, Mo.

Dan T. Gray, A.B. & B.S. in Ag. '01, Dean and Director of the University of Arkansas at Fayetteville, has secured information regarding the Missouri alumni organization among the University of Arkansas among the University of Arkansas.

Fraser C. Hilder, B.S. in C. E. '04, C.E. '07, is a structural engineer in the office of the Supervising Architect, Treasury Department, Washington, D. C., 359 DeKalb Place, N. W.

French H. Morehead, B.S. in M. E. '04, graduate of the Columbia, Mo., High School, is a chemical engineer at the National Manufacturing Co. Sealer Bldg., Boston. He married Miss Frances Thornton of Boston in 1925.

Carter Alexander, B.S. in Ed. '05, A.B. '08, A.M. '08, Prof. of Education, Teachers College, Columbia University, N. Y., was in Missouri recently working in the interest of Governor Callfield's Survey Commission.

Richard F. Bedford, '05-'06, and Mrs. Bedford, formerly Ames Walker B.S. in Ed. '12, visited here recently. They are both in St. Louis.

H. E. Dehn, B.S. in E. E. '05, E.E. '06, former truck stop graduate of the Clinton, Mo., High School, is an electrical engineer, Branson City, Mo. He married Miss Minnie Martin in 1912. They have one daughter.

Gilbert C. Dobson B.S. in C. E. '05, C.E. '07, is U. S. Associate Engineer with the War Department, working on the Arkansas River and its tributaries. A part of the good control work being done by the Government. He is stationed at Holdenville, Okla., Box 111 but his mailing address is 118 S. Franklin, Tulsa. Oil recorded Miss Dee Lake of Columbia in 1905. They have one son, Gilbert Lake, senior. Oil had a wonderfully low wax record, 80 wax in May 1917, a record which was set in 1913, with the 314th Engineers, 803rd Division was P.M.R. & T. Colo. School of Mines, and discharged in 1920.

Ernest A. Green, A.B. & L.L.B. '05, Sigma Chi, Phi Delta Theta, M. S., T. Debatting, Valerictarian, Law School, announces the formation of a partnership for the general practice of law under the firm name of Jones, Green, Rasmussen & Swanson, 414 Olive St., St. Louis. He is a graduate of the Vt-Sigma, High School, was associate attorney, Butler County, 1907-'11, assistant attorney general Missouri 1911, and member of the circuit court, City of St. Louis, 1913 and President of the Bar Association. He

married Miss May Wright of St. Louis in 1908. They have a daughter, Marjorie, and two sons Ernest A. Jr., and John L., eight. Mr. Green's brothers, Arthur W., and Leslie C., are alumni of the University.

Mrs. Wm. J. Jones, A.B. '05, formerly Gussie May Terrell, Phi Phi, and Mr. Jones, are living in Kansas City, 2414 Olive.

Robert L. Baldwin B.S. in Eng. '06, E.E. '08, Tau Beta Pi, Phi Gamma Delta, formerly Consulting Engineering for Missouri Pacific Service Commission, 14 S. W. is a consulting engineer, 502 Interstate Bldg., Kansas City. He married Miss Ethel Richardson of Kansas City in 1911. They have two sons.

Mrs. C. F. Martin, formerly Maude Williamson, A.B. & B.S. in Ed. '08, is living in Warrensburg, Mo.

Dr. John E. Nelson, A.B. '01, M.D. '02, Louis University, Phi Kappa, Phi Beta Pi, and Mrs. Nelson, formerly Thelma Whaley, R. J. C. Chi Omega, have moved to Columbia, where Dr. Nelson is in the University clinic. We are glad to welcome them to Columbia.

Wm. C. Davidson, B.S. in C.E. '07, C.E. '09, President U. D. Club, Tau Beta Pi, is state highway engineer of the N. W. Highway Commission at Santa Fe. He married Miss Marie Parsons in 1919. He has a son, Wm. C. Jr., five.

Miss Jean E. Taylor, A.B. & B.S. in Ed. '07, A.M. '15, is Professor of English, State Teachers College, Aurora, Union Literary. She writes that Virginia O. Hudson, A.M. '22, is acting Dean of Women there.

William W. Barton '08-'09, 5548 Central, Kansas City, visited the University recently.

Jay V. Holmes, L.L.B., '08, S.A.P., T.N.E., graduate of the LaBelle, Mo., High School, Illinois Military Academy, and Yale, is an Attorney, Commerce Bldg., Kansas City. He married Miss Clarence Halseth of Kansas City in 1915. They have a daughter, Jean, 11.

William Holden, B.S. in C.E. '08, General Secretary of the Tulsa, Oklahoma Chamber of Commerce was here in September with his son, Edward William, 17, who is enrolled as a freshman in the University, and a pledge of Tri-Kappa. Mr. Holden married Miss Graye Roby, '04-'08, in 1911. Their other son, James Roby, 15, will come to the University soon.

James S. Summers, A.M., L.L.B. '10, Phi Delta Theta, Aurora, Union Literary, Attorney of Kansas City, former state Senator, has been elected President of the Surety Life Insurance Co., with offices in the Kansas City, Mo., building. Mr. Summers married Miss Elizabeth Reed Ferris, A.B. '08, Phi Beta Kappa, in 1912. They have two sons and one daughter.

Henry N. Keensole, A.B. '09, L.L.B. '11, Phi Kappa Alpha, Attorney of St. Louis, visited here recently.

Samuel R. Frost, L.L.B. '09, Attorney, 214 Ridge Avenue Bldg., Kansas City, was recently elected grand master of the Missouri Masons, Wm. R. Gentry, L.R. '10, St. Louis, is grand deputy Grand Master, and Ray V. Donahoe, A.B. '07, Trenton, grand senior warden.

Stella E. Steele, B.S. in Ed. '09, A.B. '10, Alpha Phi Sigma, who has been teaching Home Economics in the East Two years at Winthrop College, Rock Hill, S. C., is now associate professor of Household Science, Georgia State College for Women, Milledgeville.

Rufus E. Dudley, B.S. in M.E. '10, Tau Beta Pi, Sigma Nu, is a metallurgical engineer, Bethlehem Steel Co., Bethlehem, Pa. He married Miss Miriam James in 1914. Everybody remembers Mr. Dudley by his nickname "Chickens."

Mrs. Lewis Knudson, formerly Callie Ingers, B.S. in H.E. '10, Alpha Phi, and son, Hubert, of Ithaca, N. Y., recently visited Mrs. Knudson's mother, Mrs. Rava R. Ingers, in Columbia. Mr. Knudson, B. S. in Ag. '08, is a member of the faculty of Cornell University.

James Cuthbert Lawrence, A.B. & C.E. '10, Rollins Scholarship, the last two years at Winthrop Duffett Bldg., Wilmington, Del., President, Philadelphia Annual Association, was here recently with his son James C. Lawrence, of Missouri 1911. He enrolled as a freshman in the University. These boys are Kappa Sigma pledges. Mr. Law-

never married Mary S. Logan, B.S. in Ed. '10. They live at Myrtle, Pa.  
 Jerald Smith, A.B. '10, LL.B. '12, Olive City, is an Attorney, 201 Joseph, Mo., Cal. by 1914.

Lewis J. Somers, LL.B. '10, and Mrs. Somers, former student '08-12, are living in Meriden, Conn., where Mr. Somers is an Attorney, 200 Director Bldg.

Lee Walker, A.B. '10, LL.B. '12 is an Attorney, 105 W. Adams St., Chicago. He married Miss Mary Craig of Nobleville, Ind. in 1916. They have two sons, Robert L., and John Craig. Mr. Walker's sister and his three brothers attended the University. He was formerly President of the Chicago Alumni Association and is active in all their affairs.

James E. Dunn, Engineering '11, Tau Beta Pi, formerly of Middletown, Mo., now an automobile dealer, Canelo Motor Co., San Jose, Calif., visited here recently for

## What Part of My Income Can I Lay Aside for Life Insurance?

### CONCRETE FACTS speak louder than words.

Here is the actual program of a young man, 28, married, with two children. His income is \$5,000 a year.

The annual premiums amount to about \$600, leaving a balance of \$4,400 for the support of his family, an easy proposition for ambitious young parents looking to the future.

What does he get for his \$600?

An estate of \$30,000, \$5,000 to be paid in cash at his death, the rest held in trust to pay \$100 a month to his widow during her lifetime, the remaining principal to go to the children after her death.

If you are interested in arranging an estate for yourself, let us help you make your plans to suit your own needs.

INQUIRY BUREAU

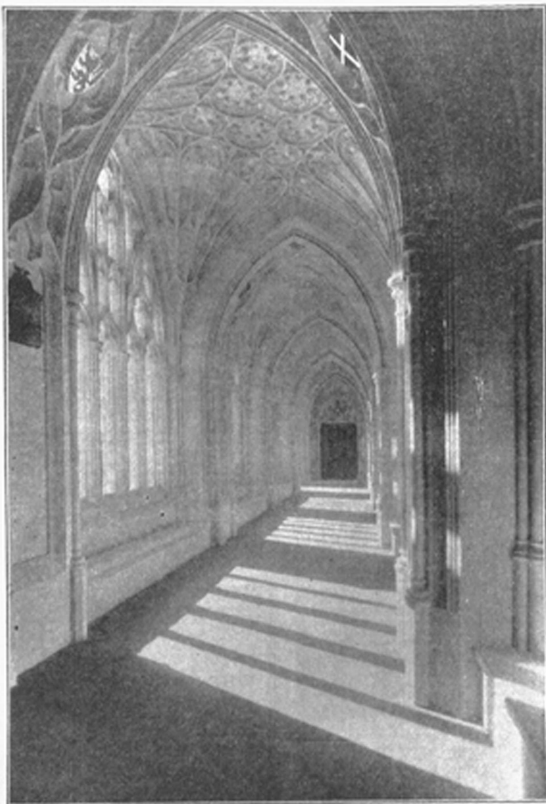
*John Hancock*  
 LIFE INSURANCE COMPANY  
 OF BOSTON, MASSACHUSETTS

197 CLARENDON ST., BOSTON, MASS.

I am interested in building an estate along the lines described in your advertisement. Please send me further information.

Name .....

Address .....



Interior St. George's School, Chapel, Newport, R. I. Oram & Ferguson, Architects.  
 L. D. Wallace & Sons Co., Builders. Built of Indiana Limestone.

## Architecture's Ideal Medium is Natural Stone

THE architect's finest work practically without exception has been executed in natural stone. No other building material so ideally expresses the design.

It is no longer necessary to compromise on some less desirable building material, for modern production methods and large volume make Indiana Limestone moderate in cost. No matter in what part of the United States the new building is to be located, this beautiful light-colored natural stone can be laid

down at costs that compare favorably with those of local stone and only slightly higher than for other materials.

It is the policy of this Company to figure costs on any set of building plans without expense or obligation of any kind. Why not, since this is so, have us make an alternate bid on your new building?

A booklet showing collegiate and school buildings mailed free. Address Box 827, Service Bureau, Bedford, Indiana.

**INDIANA LIMESTONE COMPANY**  
 General Offices: Bedford, Indiana Executive Offices: Tribune Tower, Chicago

**ALUMNI  
MISS GENEVA YOUNGS,  
DIRECTOR WOMEN'S GLEE  
CLUB ANNOUNCES THE  
FOLLOWING MEMBERS  
FOR YEAR**

Virginia Alexander, Columbia; Mary Joe Arpe, St. Louis; Dorothy Babcock, Pueblo, Colo.; Mary Jim Barnes, Moberly; Catherine Bismarck, Okla.; Betty Brasher, Corrick; Mary Brunnecke, Detroit, Mich.; Katherine Brokaw, Warrensburg; Gloria Butterfield, Lee's Summit; Louise Callaway, Summit; Ardell Chapin, Mexico; Virginia Carter, Oklahoma City, Okla.; Dorothy Nell Childers, Columbia; Lois Cook, Brookfield; Lucaine Clark, Chiff, Okla.; Martha Clay, Kansas City; Eleanor Coulter, Sweet Springs; Charlotte Crane, Columbia; Marjorie Deagen, Pittsburg, Kansas; Margaret Craze, Kansas City; Mary Katherine Dickson, Hugo, Okla.; Esther Doyle, Wamego, Kansas; Lois Duceker, Columbia; Margaret Eakins, St. Joseph; Miriam Egan, Kansas City; Madeline F. Everett, Slater; Helen Fair, Trenton; Lois Fisher, Joplin; Lois Fisher, Tulsa, Okla.; Wardine Good, Hamburg, Iowa; Eleanor Goodwin, Lincoln; Lois Griffiths, Maysfield, Ia.; Katherine Grinstead, Memphis, Mo.; Nancy Harkey, Webster Grove; Edna Harris, Shoreport, La.; Gertrude Hummel, Flat River, Mo.; Miriam Lee Hess, Kansas City; Edna Jean Jarvis, Needham, Mass.; Julia Johnson, Trenton; Doris Kleck, Kansas City; Pauline Johnson, Bedford, Mo.; Mary Koefoegge, Kansas City; Louise Koeniger, Ashland; Dorothy Kirkwood, Trenton; Beada Kutz, Kadly, Grant Summit; Mary Knop, Windsor; Lucille Land, Kansas City; Doris Lawrence, Garnett, Kansas; Barbara Lindsay, Wisconsin; Lillian Lutz, Lorber, Acors; Helen Ruth Long, Tulsa, Okla.; Jessalene Milliland, St. Louis; Selma Margolis, Columbia; Julia Marshall, Charleston; Grace Miller, St. James; Dorothy Mendes, Jefferson City; Eugenia Morris, Farmington; Alleen Milligan, Guthrie Center, Iowa; Eleanor Moore, Linn; Frances Mann, Rolla; Martha Mitchell, St. Joe; Alberta Norton, Kansas City; Marjorie Phillips, Linn; Mary McCurry, Salisbury; Dorothy Neeb, Arapahoe, Colo.; Marian Nelson, Kansas City; Hazel Nickel, Moberly; Cynthia Noel, St. Louis; Mary Francis Omer, Mann, Arkansas; Dorothy Orr, Chilliworth; Louisa Osterberg, St. Louis; Lela Owen, Kansas City; Marjorie Pfan, Sumner; Cecil Phillips, Olathe; Ruth Gulgley, Cameron; Melba Reid, Montgomery; Mildred Bush, Kansas City; Dorothy Huskin, Sedalia; Catherine Schupp, Olathe, La.; Marjorie Seward, Harold; Evelyn Schurr, Kansas City; Betty Simus, Kansas City; Catherine Sharp, Mexico; Edna Stephens, Newell; Virginia Stillman, St. Louis; Elizabeth Steele, St. Louis; Nadine Strube, Willowville; Elizabeth Stockard, Ladonia; Yvonne Spriggs, Tulsa, Okla.; Winifred Tiffin, Ferguson; Grace Townsend, Maplewood; Virginia Underwood, Jefferson City; Katherine Tyler, Sedalia; Dorothy Visser, Tulsa, Okla.; Frances Whitlow, Rogers, Arkansas; Inezette Williams, Gilbert, Arkansas; Jeanie Williams, Gilbert, Arkansas; Thelma Williams, Columbia; Frances Mann, accompanist; Martin Nelson, assistant to the accompanist.

**Miller**  
GEORGE HELM FRANK BIRH  
Alumni Patronize Alumni Advertisers

the second time since his graduation. We enjoyed Jim's visit.

James E. Garrett, '11, is in Paracomb, Ark., 324 S. 5th Ave.

Lloyd Garrison, A.B. '12, is an Attorney, 100 N. LaSalle St., Chicago.

E. C. Hill, B.S. in Ag. '12, Delta Tau Delta, Tombs & Key, Myrtle Beach, South Carolina '09 and '11, Baseball '10 and '11, captain the latter year formerly of Columbia, is Manager, Farm Loan Dept., George M. Farnum & Co., Chicago. He married Miss Nina Berg of Madison, Wis., in 1912. They live at 825 Carolina Ave.

A. S. Hurt, B.S. in Ed. '12, A.P. & A.M. '16, Phi Delta Kappa, is in charge of Industrial Relations, Snugg Creek Lumber, Standard Oil Co. of Indiana, 609 Overton, Fairmount Station, Kansas City. He married Miss Pearl Marrell in 1909. They have a son, Junior, sixteen, and a daughter, Marcell, 8.

Logan H. Keller, B.S. in E.E. '12, is President of the Power Machinery Co., Dwight Bldg., Kansas City. He married Miss Clara Estelle White, former student, Alpha Psi in 1924. They live at 412 W. 60 Terrace.

Harry E. Billings, B.S. '12, and Mrs. Billings, formerly Mrs. Lee George, '06 '10, are living in Wichita, Kansas where Mr. Billings is President of the Billings-Babbitt Machine Co. They visit the University often.

Hsin Wong, B.S. '12, is on the Chinese staff of the University of Yenching, Peking, China. He is also a graduate of the University High School.

J. J. Gravy, A.B. '13, A.M. '15, Attorney, St. Louis, and Mrs. Gravy, and their daughter, Marjorie, visited here recently.

Ralph Loomis, B.S. in Ag. '15, M.A. '21, Alpha Zeta, formerly of Sedalia, is a graduate of the Graduate School of Theology, Oberlin O., is a member, Dublin, O., Community Church. He married Miss Nellie G. Brown, B.S. in Ed. '21, of Triplett, Mo., in 1922.

Raymond W. Hall, A.B. '13, LL.B. '15, Phi Gamma Delta, Phi Alpha Delta, is Vice-President and trust officer, First National Bank, Kansas City. He married Miss Anne Woodruff in 1924. His four brothers, Warren, Elmer, James and David L., attended the University.

**WHEN YOU MOTOR TO  
COLUMBIA**

Be sure to come to alumni motorists headquarters, leave your car here for attention, enjoy our service, and let your mind rest easy with the assurance that your car is safe and ready for your trip home.

**The Missouri  
Motor Co.**

Jack Taylor's Place  
"Heavy" Thomas, Assisting

ALUMNI MOTORIST  
HEADQUARTERS

**MANY HOMECOMING  
ALUMNI WIN AWARDS**

**CONGRATULATIONS, ALL!**

Mrs. Carl Lyerly, A.B. '27, San Jose, Costa Rica, who traveled three thousand miles to attend Homecoming, was awarded the prize for the person traveling the greatest distance for that event, according to Miss Constance Read, who had charge of the Department of Homecoming.

George W. Barroughs, '25, Columbia, was awarded the prize for the oldest alumnus attending Homecoming. M. P. Welbeck, Columbia, Prof. of Electrical Engineering, and Joe Hennessy, '21, Louis, tied for first prize for the alumnus having the most children in the University, each having three children enrolled.

Bud Entery, chairman of the annual Homecoming Golf Tournament, announced the following awards:

John Turner, medalist, with a score of 78 won a pair of golf shoes, first prize; and T. L. Price, second medalist, 84, won a Clark clear lighter.

Other winners were B. B. Branstetter, best putter, won a pair of golf socks for putting only 31 times for the course; J. M. England, "booby prize" winner, received a picture of the Columns; R. Brown Glenn, freak medalist, picture of the Memorial Tower, also.

Chas. D. Gleason, Chairman of Decorations, announces that the committee on home decorations consists composed of Professors Wetler, Hanson, Rhynsburger, and Major, announces the following results: Fraternity, Delta Tau Delta; Secularity, Alpha Phi; business house, Wolff's.

All alumni and former students can purchase pictures of the columns, the Tower, University building and scenes, Missouri and their pennants, postal cards of University scenes, golf and athletic supplies and anything you want from your store, The Co-Op.

**The Co-Op**

CHARLES E. BARKSHIRE, Mgr.  
Alumni Patronize Alumni Advertisers



### OUR FRIENDS FURNISH NEWS FOR ALUMNI INTEREST

The Sigma Chi officially opened their new home recently on College and University. It's a beauty.

Dean James T. Quarles of the School of Fine Arts is to be commended for bringing the U. S. Army Band to Columbia for several concerts recently and for the wonderful ceremony at the Memorial Tower in which the Army Band and the R. O. T. C. participated.

Leslie Connor, B.S. in C. E. '32, University Secretary, is in his office again following several weeks illness. We are glad to see him back. He had a tough time of it.

Prof. Marshall F. Bryant, Chairman of the Voice Department of the School of Fine Arts, and Director of the Missouri Men's Glee Club, has been elected President of the Missouri Valley Glee Club Association, which has charged the national Glee Club contests, to be held this year at the University of Oklahoma on the evening of Feb. 14.

Dean Mumford was all smiles during the opening of school. He had the greatest enrollment increase in the Ag school since 1921, despite the most disastrous crop season in years. 165 freshmen Ags are enrolled, 145 the first day, a 45 per cent increase over last year, when 98 were entered by October 22. The total enrollment in Ag on that day in 1928 was 292, compared with 355 the first day of registration this fall. The present enrollment includes 288.

Sam B. Shirky, Superintendent, Winter Short Courses in Agriculture, announces the first term October 28 to December 28, with a dandy enrollment, and second term January 2 to February 22. He has issued a wonderfully attractive pamphlet on the Agricultural Short Course, which will be sent free upon application. You alumni should urge your former friends to attend these Ag Short Courses. These courses pay in dollars and cents.

C. A. Ramm, Manager of the local Western Union, recently completed his 56th year of telegraph service. Just think of the messages of joy and sorrow that have gone through his hands.

Jerry Lewis, '22-24, of athletics, is enrolled in school, studying for a B.S. in Ag and is helping Stankowski coach the freshmen.

Wendell Holman, B.S. in Ag, '20, Columbia, the Boone county farm agent, is a hustler and a splendid worker and is making a good record.

B. D. Simon, C.E. '16, and his brothers, Columbia contractors, who built the Memorial Tower, are going to build the Delta Union boys a \$25,000 home on Kentucky and Herbrand, just across the street from the Theta and the University Golf Course. It's a dandy good location for a fine bunch of boys.

**Parker**  
FURNITURE CO.

Barton Bobnett Tom Mellarg

Alumni Patronize Alumni Advertisers

Ray H. Lucas, A.B. '32, Phi Alpha Delta, President Scott County Alumni Association, is an Attorney, Benton, Mo. He married Miss Cecil H. Norris in 1917. They have two daughters.

Dr. James O. Peeler, A.B. '33, A.M. '34, Phi Beta Kappa, formerly of Northboro, Mo. is a Physician and Surgeon, St. Louis, 4008 National Bridge. He married Miss Nellie Maud of Columbia, former student in the University in 1915. They have two sons, Henry Allen, nine, and David Robert, four. Carter H. Taylor, B.S. in E.E. '32, A.T. O., St. Louis, Botanist, is with the Taylor-Ruble Company, 2169 S. Main, Ft. Worth, Texas. He married Miss Frances Yates of Kansas City in 1912. They have a daughter, Jane, 5. Harry Todd, C.E. '33, Sigma Chi, donor of the annual Harry Todd Scholarship for the most outstanding student on the campus, contractor of Hot-Business, Kan., was here

the other day. We had a dandy visit. He had just returned from Bolivia where he was awarded a big paving contract. Harry and Ess, E. Trues, '11, of San Jose, Calif., who dropped into the Alumni Recorder's office, went out together to watch the Tigers practice.

Milton E. Burnett, A.B. & B.S. '14, K. A. C. Q. E. R. H., basketball '11-14, captain latter

## American and Annex Hotels

Absolutely Fireproof

7th & Market, 6th & Market  
ST. LOUIS, MISSOURI

On direct car line with the Union Station and surrounded by all the leading places of amusement.

500 rooms with all the conveniences of a home. Bath (tub or shower) in every room. Running ice water. Telephone. In fact, everything to make you comfortable and fee lat home.

Our "nation-famed" cooking at reasonable prices will attract you to our cafe.

E. Berkley Martin, Manager

Place Your Order Today for

Our Guaranteed Home

Grown Flowers

For Flowers for Parties, Dances, Birthdays, etc., call

**H. R. Mueller**  
MEMBER F.T.O.  
FLOWER SHOP

### THE BEST DAIRY PRODUCTS

We find it pays to advertise in the Alumnus.

The alumni and former students of the University in Columbia appreciate the support given their magazine, The Alumnus, by the Columbia business men.

The Central Dairy appreciates this business and we do everything we possibly can to cater to our friends among the alumni and former students.

### CENTRAL DAIRY

"Dot" Sappington and  
Clyde L. (Brick) Shepard  
Proprietors

"Mother May We Have More"

### Memorial Tower

Home Economics Building and the addition to same now under construction, the new University Hospital Methodist Girls' Dormitory, Boone County National Bank Building and many others are "Simon Built."

**SIMON**  
Construction  
Company

314-18 Guitar Building  
Columbia, Missouri

**PROMINENT ALUMNI  
BRING FAME TO  
UNIVERSITY**

Edgar D. Lee, A. M. '09, A. B. & B. S. in Ed. '08, President of Christian College, announces that the following alumni and former students of the University are affiliated with Christian.

- Edgar Desmond Lee, President A.B., B.S., A.M.
- James C. Miller, Dean of Faculty (Education) A.M.
- Julia Spalding, Dean of Women, (Mathematics and Logic, B.S., A.M.)
- Robert C. Abram (Sociology and Psychology) B.S., A. M.
- Ruth Graham (Economic Economics) B. S. in Education, A.M.
- Margaret Roberts Green (Pub. School Music, Voice, History of Music) Summer 1928.
- Isabel Johnson (French and Latin) A.B., B.S., A.M.
- Mary Paxton Key (English) B.S. in Education, M.A.
- Stella S. Meyer (Spanish and French) A.B., A.M.
- Mona Cook Morris, A.B., B.S. in Education, A.M.
- Helen Myers (Violin, Orchestra and Etem. Harmony) Now enrolled.
- Margaret McMillan (History) A.M.
- Elizabeth Potts (Applied Art)
- Ester Wagner Stearns (Chemistry) Ph.D.
- Kath Whitfield Tandy (Piano, Organ, Adv. Harmony) 1928-29.
- G. H. Bretnall (Botany) Now enrolled—candidate for doctorate.
- Franco Brewer (Phy. Ed. Assistant) Now enrolled.
- Ellen Cairns (Dancing) Now enrolled.

**DAIRY JUDGING TEAM WINS  
CHAMPIONSHIP**

The Dairy Judging team of the College of Agriculture was first in judging Guernseys and Holsteins, third in Ayrshires, and were awarded the sweepstakes of the students' national dairy contest at the National Dairy Show in St. Louis. Verane L. Gregg, Walnut Grove; Kenneth L. Turk, Mt. Vernon; and Robert Hand, Hannibal, were members of the Missouri team. Missouri defeated 27 agricultural colleges in the U. S. and one in Canada for the championship. Warren Gifford was the Dairy coach. Some success for him! We congratulate him and his boys. All praise to them.

Glen Smith, one of the Smith brothers of Tulsa, and football fame, is coaching the Hickman High School football team in Columbia. We're for the High School boys and their coach, and faculty.

**Dorn-Cloney  
Laundry Co.**

Managed by the Milburn Boys  
Alumni Patronize Alumni Advertisers

year, is with the Mountain State Telephone & Telegraph Co. Denver, Colo. He married Miss Florence E. Hensley of St. Louis in 1928.

Miss Josephine Y. Evans, B.S. in Ed. '11, is teaching in Vandalia, Mo.

David W. Hardy '14-15 is an Attorney, firm of Hardy & Iselt, 1201 Republic Bldg. Dallas. He came to the University with an A.B. '13, LL.B. '14, from the University of Texas to teach political science and public law with Prof. Sheppard and Dean Loeb, but incidentally finished all work for an A.M. degree except finishing his thesis. He has since received a graduate degree from the University of Tennessee, France. He is a member of Delta Chi, University of Texas.

Helen M. Harris, A.B. '14, Kappa Kappa Gamma, L.S.V., 1620 S. Kentucky St., Sedalia, is assistant professor of Library Science, University of Tennessee Knoxville.

John K. Bahner, B.S. in C.E. '14, is Associate Engineer, U. S. Bureau of Reclamation, employed as Resident Engineer on the location and construction of an irrigation canal seventy miles long to carry water from Snake River to the Wood River, with headquarters in Eden, Idaho. He married Miss Carrie Newell of Nebraska in 1919. They have two sons and one daughter. Mr. Bahner's home was formerly in Hannibal, Mo.

Chas. C. Woods, A.R. '14, A.T.O. Tenets '21-14, is a banker, Dalhart, Tex. His home was formerly in Laredo, Mo.

Thomas S. Barclay, A.B. '15, A.M. '16, formerly professor of political science in the University, now at Stanford University visited here recently.

Ashleigh P. Bowles, M.A. in Ag. '15, is horticultural agent Missouri Pacific Lines, 1706 Missouri Pacific Bldg., St. Louis.

Quincy Harrington, B.S. in Ag. '13, Alpha Zeta, Farm House, is an extensive farmer, Atlanta, Mo. He married Miss Ethel Edwards of Centralia, Mo., former student '12-13. They have three sons and two daughters.

George T. (Pat) Murphy, Green Ridge, Mo., A.B. '15, Mystical River, Frank, '11 '14 and '15, captain the latter. They was here to enroll his brother, Fred, as a freshman in the School of Journalism, Mr. Murphy married Miss Etta E. Kendrick of Green Ridge in 1919. They have one daughter, Marian Elizabeth eight.

John P. Nicholson, A.B. '15, Quo Vadis, Frank, Hurdles, high and broad jump, Olympic team 1912, track captain '13, is Athletic Coach, Notre Dame, Ind. He mar-

**THE PLA-HOUSE**

in Columbia

Headquarters for Bowling

No trip to Columbia is complete without a visit and a game at

**THE PLA-HOUSE**

Locust St., west of Missouri Theatre

**Exchange National  
Bank**

Established 1865

Built on Service and Safety

The Tiger and The  
Campus Tiger Barber  
Shops  
for  
STUDENTS  
and for  
ALUMNI

THE TIGER on So. 9th St.  
THE CAMPUS TIGER  
south of Jesse Hall

**Always Alumni  
Headquarters.—**

Alumni are coming to Columbia this fall and winter in greater numbers than ever before, not only on week-ends but on every day of the school year. Alumni wanting reservations should notify us immediately. Our service is at your command.

**The Daniel Boone Tavern**

A distinctive Hotel

Our dining room facilities in the main dining room and in the Coffee Shop are second to none.

We have an adequate Banquet Room in the basement.

We employ in every department many students who are working their way through the University. They are instructed to cater to the Alumni and former students.

Write, wire, or phone me when you want accommodations at the Tavern.



**DANIEL BOONE  
TAVERN**

Alumni Headquarters

F. W. (Ramrod) Leonard  
Proprietor

### NEWS OF FAMOUS COLUMBIANS WHICH WILL INTEREST ALL

**F. Lambda Theta to Initiate Nineteen**  
New five girls in the school of education were recently initiated into F. Lambda Theta, honorary education fraternity for women, at a "founders' day banquet at the Tiger Hotel.

The initiates are: Helma C. Fritz, St. Louis; Neva H. Cookerell, Excelsior Springs; Helen M. Enzig, Morrisville; Bertha L. Roper, Republic; Josephine Rappel, Springfield; Mary J. Wheeler, Columbia; Hazel L. Wilson, Lander; Margaret E. Whitehead, Columbia; and Frances A. Harker, Fulton. Congratulations girls, and F. Lambda Theta too!

### Columbian Wins place in College Hall of Fame

Miss Virginia Yates, daughter of Mr. and Mrs. J. M. Estes, of Columbia and a sophomore in the University, is one of the eight students selected from all colleges and universities in the United States for the Collegiate Hall of Fame in College Huron.

A scholarship student at the University of Missouri, her beauty and popularity have won her two memberships—Savitar and St. Pat's.

It was noted under her picture, "Virginia is president of The Hope of Tomorrow Club, composed of boys and girls in the University whose parents or grandparents made the University. She's a wonderful girl."

Miss Dorothy Brooks, daughter of President and Mrs. Brooks, is with Ginn and Co., publishers, Boston, Mass.

Miss Elba Victoria Dutha, A.M., '23, associate professor Industrial Arts of the University, wrote a paper, "Children's Literature—Who Shall Write It?" Reference made to the paper in a recent issue of the *Inland Daily Press Association*.

Miss Elizabeth Zanna, F.A., '29, Delta Delta Delta, Delta Phi Delta, daughter of Mr. and Mrs. N. W. Zanna, formerly of Columbia, has been awarded a diploma from the School of Fine Arts at Fontainebleau, Paris, France.

Herl Gordon, B.S. by R. A., '20, is the Y. M. C. A. Secretary here, and a hard working one.

A. E. Traxler, B. S. in Ag. '14, B.S. in Ed., '17, LL.B., '24 Yale, is an Attorney, Gutter Bldg., Columbia.

George H. Gray, '88, publisher of the Star-Ken, Mo. Leader, has again been named field secretary of the Press Congress of the World, Donn Walter Williams was formerly president of the organization.

Mr. Pierce Niedermeyer, '17-'21, and Mrs. Niedermeyer, formerly Chyler, C. Central, '17-'21, and sons, Frederick Pierce and Jimmy, have moved from Kansas City to Columbia. They are at home in the Frederick Apartments.

*Fredendall's*

H. A. DOTY

R. J. FOERST

ried Miss Gladys R. Hunt of St. Louis in 1925. They have a son, Win Robert, eight, and a daughter, Martha Jane, three.  
Lynn Webb, Law '25, is an Attorney, 1150 Land Bank Bldg., Kansas City and one of our most enthusiastic alumni here. As Vice-President of the Law Mutual Association he had charge of the annual luncheon in Kansas City during the State Bar meeting. It was the largest and most enthusiastic law alumni luncheon we've had.

Edward O. Wiley, B.S. in Ed., '15, Phi Delta Kappa, is Director of the Training School, N. W. Tex. State Teachers' College, San Marcos, Tex. He married Miss Jeanie Van Ansburg in 1925. They have two sons, E. O. Jr. and Bobbie, and a daughter, Bette Jane.

Leon M. Arms, B.S. in Eng., '16, Tau Beta Pi, is Factory Superintendent, Chicago Concrete Post Co., 427 N. Linton Ave., residence 4225 Addison St.

Dr. Lee Peeth Gray, A.B., '04, Sigma Nu, Phi Beta Psi, is a Physician in St. Louis, 721 University Club Bldg.

Fred P. Hutchisson, B.S. in Eng., '16, Tau Beta Pi, is a Mechanical Engineer, Western Electric Co., Keating Works, Jersey City, N. J.

Rush Ishbaugh, A.B., '16 Phi Delta Phi, Delta Sigma Ethe, Athenson, Stephens Prize in Dentistry, Texas and Colorado dentist, '14-'15, is an Attorney, Cane Grant, Ariz. He married Miss Dee Seabough of Sedgewickville, Mo., in 1914. They have two sons, Rush H. Jr., eleven, and Murray H., eight, and a daughter, Marguerite, fourteen.

Mrs. G. Day Smith, formerly Bertha Schmidt, B.S., '16, and Mr. Smith are living in Kansas City, 4916 Baltimore Av.

Mrs. Alvin L. Barton, B.S. in Ed., '17, formerly Ruby McClure is living in Houston, Mo.

Rollins H. Browder, '17-'21, is assistant cashier, Broadway Banking Co., Brookfield Mo. R. S. Browder, A.B., '30, is President, and E. C. Browder, '12-'16, is Cashier.

Harold S. Cary, A.B., '17, Delta Psi Club, Sigma Gamma Epsilon, Gamma Alpha, Geologist, Gypsum Oil Co., Roswell, N. M., visited the annual office recently while here on business. He married Miss Dorothy M. Laten of Waverly, Tenn., in 1926.

Alumni in Columbia and everywhere, who enjoy quality printing and binding and who enjoy having their printing work done by those who enjoy doing good work, should by all means remember.

## E. W. STEPHENS PUBLISHING CO.

Where Hit Hits Broadway  
Columbia, Mo.

E. W. Stephens, A.B. '67, A.M. '70 LL.B. '05, President

E. Sydney Stephens, A.B. '03, Vice-President

Frank W. Dearing, '99, Secretary-Treasurer

### NEW R. O. T. C. OFFICER NAMED

Second Lieutenants Elected by Col. Wright, Who is Making a Wonderful Record at Missouri

Second Lieutenants in the R. O. T. C. at the University of Missouri, to serve during the first semester, were announced recently by Col. John Wright, professor of military science and tactics.

The field artillery lieutenants are: H. B. Atterbury, Columbia; J. C. Baker, Kansas City; H. L. Brenner, St. Louis; W. H. Burwell, Moberly; L. S. Carroll, Landon; L. L. Duff, Nevada; James DeBoer, Maplewood; A. W. Danlay, Kansas City; Ross, Mo.; J. C. Hollis, Moberly; F. S. Huddleston, Brunswick; D. C. Johnson, Kansas City; R. T. King, Lebanon; O. J. Landon, Lake Forest, Ill.; K. Richard Lusk, Kansas City; J. B. Lyles, Kansas City; S. H. Metzger, Kansas City; C. L. Morse, Lullow; G. L. Nelson, Belton; Joseph Polferman, St. J. P. Ponsanta, West Frankfort, Ill.; A. W. Redman, Maryville; A. D. Reese, St. Louis; H. B. Hillman, St. J. P. Ponsanta, West Frankfort, Ill.; R. H. Smith, Yuba, Okla.; L. A. Sauer, Marthasville; Walter Spewzak, Ellinbath; N. J. J. H. Terry, St. Louis; A. L. Yerville, Kansas City; William M. Ward, Webster; George; N. J. Weber, Irvington, N. J.; H. H. White, Jr., St. Louis; W. J. Williams, Columbia; and R. L. Young, St. Louis.

The infantry second lieutenants are: William Addison, Jr., St. Louis; Henry Bolden, Columbia; H. C. Bradshaw, Barnett; R. C. Brannon, Kansas City; A. B. Christian, Kansas City; E. C. Fair Play, F. E. DeLester, Coal; Francis Paul Dietz, Kansas City; Ross Donwood, Joplin; Jean P. Eberle, Columbia; Harold E. Eitzen, Dallas, Tex.; G. K. Fagin, Jr., Lathrop; Floyd R. Gibson, Kansas City; L. R. Giffins, Columbia; J. A. Grewden, Joplin; William H. Hand, Council Bluffs, Ia.; Edward M. Heller, Kansas City; E. C. Holscher, Kirkwood; H. W. Hunt, Jr., Huff, Colo.; N. D. Hopkins, Okmopoo, Okla.; J. H. Hughes, Elizabeth, N. J.; Louis R. Hughes, Kansas City; C. L. Keaton, St. Louis; J. M. Koppel, Columbia; Howard C. Krob, Kansas City; James C. Lawrence, Kansas City; John M. Lee, Kansas City; Cleber V. Lewis, Kansas City; Robert H. Moore, Spring; J. S. Margolis, Del. Ind.; Fern G. L. Martin, Elizabeth, N. J.; James A. Moore, Kansas City; Alexander Moses, Muskogee, Okla.; Charles Nathan, New York City; Henry Nelson, Kansas City; J. D. Nolan, St. Louis; J. W. Ogden, Hannibal; A. S. Poutinlou, Norborne; H. C. Poverall, Columbia; D. H. Pritchard, Gary, Ind.; J. C. Richards, Joplin; H. E. Samsom, Joplin; LeRoy D. Smithers, St. Joseph; Frederick Snyder, Kansas City; H. W. Spencer, Jefferson City; Walton W. Steck, Kansas City; W. H. Stone, Windsor; Roy C. Stuber, St. Louis; Green Castle, Ind.; Robert P. Tamm, San Antonio, Texas; Glenn E. Williamson, Fulton; J. Swan T. McDonald, Moberly; Lorenza Ordlethede, Columbia; and A. C. Hall, Longmont, Colo.

The infantry second lieutenants are: William Addison, Jr., St. Louis; Henry Bolden, Columbia; H. C. Bradshaw, Barnett; R. C. Brannon, Kansas City; A. B. Christian, Kansas City; E. C. Fair Play, F. E. DeLester, Coal; Francis Paul Dietz, Kansas City; Ross Donwood, Joplin; Jean P. Eberle, Columbia; Harold E. Eitzen, Dallas, Tex.; G. K. Fagin, Jr., Lathrop; Floyd R. Gibson, Kansas City; L. R. Giffins, Columbia; J. A. Grewden, Joplin; William H. Hand, Council Bluffs, Ia.; Edward M. Heller, Kansas City; E. C. Holscher, Kirkwood; H. W. Hunt, Jr., Huff, Colo.; N. D. Hopkins, Okmopoo, Okla.; J. H. Hughes, Elizabeth, N. J.; Louis R. Hughes, Kansas City; C. L. Keaton, St. Louis; J. M. Koppel, Columbia; Howard C. Krob, Kansas City; James C. Lawrence, Kansas City; John M. Lee, Kansas City; Cleber V. Lewis, Kansas City; Robert H. Moore, Spring; J. S. Margolis, Del. Ind.; Fern G. L. Martin, Elizabeth, N. J.; James A. Moore, Kansas City; Alexander Moses, Muskogee, Okla.; Charles Nathan, New York City; Henry Nelson, Kansas City; J. D. Nolan, St. Louis; J. W. Ogden, Hannibal; A. S. Poutinlou, Norborne; H. C. Poverall, Columbia; D. H. Pritchard, Gary, Ind.; J. C. Richards, Joplin; H. E. Samsom, Joplin; LeRoy D. Smithers, St. Joseph; Frederick Snyder, Kansas City; H. W. Spencer, Jefferson City; Walton W. Steck, Kansas City; W. H. Stone, Windsor; Roy C. Stuber, St. Louis; Green Castle, Ind.; Robert P. Tamm, San Antonio, Texas; Glenn E. Williamson, Fulton; J. Swan T. McDonald, Moberly; Lorenza Ordlethede, Columbia; and A. C. Hall, Longmont, Colo.

The infantry second lieutenants are: William Addison, Jr., St. Louis; Henry Bolden, Columbia; H. C. Bradshaw, Barnett; R. C. Brannon, Kansas City; A. B. Christian, Kansas City; E. C. Fair Play, F. E. DeLester, Coal; Francis Paul Dietz, Kansas City; Ross Donwood, Joplin; Jean P. Eberle, Columbia; Harold E. Eitzen, Dallas, Tex.; G. K. Fagin, Jr., Lathrop; Floyd R. Gibson, Kansas City; L. R. Giffins, Columbia; J. A. Grewden, Joplin; William H. Hand, Council Bluffs, Ia.; Edward M. Heller, Kansas City; E. C. Holscher, Kirkwood; H. W. Hunt, Jr., Huff, Colo.; N. D. Hopkins, Okmopoo, Okla.; J. H. Hughes, Elizabeth, N. J.; Louis R. Hughes, Kansas City; C. L. Keaton, St. Louis; J. M. Koppel, Columbia; Howard C. Krob, Kansas City; James C. Lawrence, Kansas City; John M. Lee, Kansas City; Cleber V. Lewis, Kansas City; Robert H. Moore, Spring; J. S. Margolis, Del. Ind.; Fern G. L. Martin, Elizabeth, N. J.; James A. Moore, Kansas City; Alexander Moses, Muskogee, Okla.; Charles Nathan, New York City; Henry Nelson, Kansas City; J. D. Nolan, St. Louis; J. W. Ogden, Hannibal; A. S. Poutinlou, Norborne; H. C. Poverall, Columbia; D. H. Pritchard, Gary, Ind.; J. C. Richards, Joplin; H. E. Samsom, Joplin; LeRoy D. Smithers, St. Joseph; Frederick Snyder, Kansas City; H. W. Spencer, Jefferson City; Walton W. Steck, Kansas City; W. H. Stone, Windsor; Roy C. Stuber, St. Louis; Green Castle, Ind.; Robert P. Tamm, San Antonio, Texas; Glenn E. Williamson, Fulton; J. Swan T. McDonald, Moberly; Lorenza Ordlethede, Columbia; and A. C. Hall, Longmont, Colo.

The infantry second lieutenants are: William Addison, Jr., St. Louis; Henry Bolden, Columbia; H. C. Bradshaw, Barnett; R. C. Brannon, Kansas City; A. B. Christian, Kansas City; E. C. Fair Play, F. E. DeLester, Coal; Francis Paul Dietz, Kansas City; Ross Donwood, Joplin; Jean P. Eberle, Columbia; Harold E. Eitzen, Dallas, Tex.; G. K. Fagin, Jr., Lathrop; Floyd R. Gibson, Kansas City; L. R. Giffins, Columbia; J. A. Grewden, Joplin; William H. Hand, Council Bluffs, Ia.; Edward M. Heller, Kansas City; E. C. Holscher, Kirkwood; H. W. Hunt, Jr., Huff, Colo.; N. D. Hopkins, Okmopoo, Okla.; J. H. Hughes, Elizabeth, N. J.; Louis R. Hughes, Kansas City; C. L. Keaton, St. Louis; J. M. Koppel, Columbia; Howard C. Krob, Kansas City; James C. Lawrence, Kansas City; John M. Lee, Kansas City; Cleber V. Lewis, Kansas City; Robert H. Moore, Spring; J. S. Margolis, Del. Ind.; Fern G. L. Martin, Elizabeth, N. J.; James A. Moore, Kansas City; Alexander Moses, Muskogee, Okla.; Charles Nathan, New York City; Henry Nelson, Kansas City; J. D. Nolan, St. Louis; J. W. Ogden, Hannibal; A. S. Poutinlou, Norborne; H. C. Poverall, Columbia; D. H. Pritchard, Gary, Ind.; J. C. Richards, Joplin; H. E. Samsom, Joplin; LeRoy D. Smithers, St. Joseph; Frederick Snyder, Kansas City; H. W. Spencer, Jefferson City; Walton W. Steck, Kansas City; W. H. Stone, Windsor; Roy C. Stuber, St. Louis; Green Castle, Ind.; Robert P. Tamm, San Antonio, Texas; Glenn E. Williamson, Fulton; J. Swan T. McDonald, Moberly; Lorenza Ordlethede, Columbia; and A. C. Hall, Longmont, Colo.

The infantry second lieutenants are: William Addison, Jr., St. Louis; Henry Bolden, Columbia; H. C. Bradshaw, Barnett; R. C. Brannon, Kansas City; A. B. Christian, Kansas City; E. C. Fair Play, F. E. DeLester, Coal; Francis Paul Dietz, Kansas City; Ross Donwood, Joplin; Jean P. Eberle, Columbia; Harold E. Eitzen, Dallas, Tex.; G. K. Fagin, Jr., Lathrop; Floyd R. Gibson, Kansas City; L. R. Giffins, Columbia; J. A. Grewden, Joplin; William H. Hand, Council Bluffs, Ia.; Edward M. Heller, Kansas City; E. C. Holscher, Kirkwood; H. W. Hunt, Jr., Huff, Colo.; N. D. Hopkins, Okmopoo, Okla.; J. H. Hughes, Elizabeth, N. J.; Louis R. Hughes, Kansas City; C. L. Keaton, St. Louis; J. M. Koppel, Columbia; Howard C. Krob, Kansas City; James C. Lawrence, Kansas City; John M. Lee, Kansas City; Cleber V. Lewis, Kansas City; Robert H. Moore, Spring; J. S. Margolis, Del. Ind.; Fern G. L. Martin, Elizabeth, N. J.; James A. Moore, Kansas City; Alexander Moses, Muskogee, Okla.; Charles Nathan, New York City; Henry Nelson, Kansas City; J. D. Nolan, St. Louis; J. W. Ogden, Hannibal; A. S. Poutinlou, Norborne; H. C. Poverall, Columbia; D. H. Pritchard, Gary, Ind.; J. C. Richards, Joplin; H. E. Samsom, Joplin; LeRoy D. Smithers, St. Joseph; Frederick Snyder, Kansas City; H. W. Spencer, Jefferson City; Walton W. Steck, Kansas City; W. H. Stone, Windsor; Roy C. Stuber, St. Louis; Green Castle, Ind.; Robert P. Tamm, San Antonio, Texas; Glenn E. Williamson, Fulton; J. Swan T. McDonald, Moberly; Lorenza Ordlethede, Columbia; and A. C. Hall, Longmont, Colo.

The infantry second lieutenants are: William Addison, Jr., St. Louis; Henry Bolden, Columbia; H. C. Bradshaw, Barnett; R. C. Brannon, Kansas City; A. B. Christian, Kansas City; E. C. Fair Play, F. E. DeLester, Coal; Francis Paul Dietz, Kansas City; Ross Donwood, Joplin; Jean P. Eberle, Columbia; Harold E. Eitzen, Dallas, Tex.; G. K. Fagin, Jr., Lathrop; Floyd R. Gibson, Kansas City; L. R. Giffins, Columbia; J. A. Grewden, Joplin; William H. Hand, Council Bluffs, Ia.; Edward M. Heller, Kansas City; E. C. Holscher, Kirkwood; H. W. Hunt, Jr., Huff, Colo.; N. D. Hopkins, Okmopoo, Okla.; J. H. Hughes, Elizabeth, N. J.; Louis R. Hughes, Kansas City; C. L. Keaton, St. Louis; J. M. Koppel, Columbia; Howard C. Krob, Kansas City; James C. Lawrence, Kansas City; John M. Lee, Kansas City; Cleber V. Lewis, Kansas City; Robert H. Moore, Spring; J. S. Margolis, Del. Ind.; Fern G. L. Martin, Elizabeth, N. J.; James A. Moore, Kansas City; Alexander Moses, Muskogee, Okla.; Charles Nathan, New York City; Henry Nelson, Kansas City; J. D. Nolan, St. Louis; J. W. Ogden, Hannibal; A. S. Poutinlou, Norborne; H. C. Poverall, Columbia; D. H. Pritchard, Gary, Ind.; J. C. Richards, Joplin; H. E. Samsom, Joplin; LeRoy D. Smithers, St. Joseph; Frederick Snyder, Kansas City; H. W. Spencer, Jefferson City; Walton W. Steck, Kansas City; W. H. Stone, Windsor; Roy C. Stuber, St. Louis; Green Castle, Ind.; Robert P. Tamm, San Antonio, Texas; Glenn E. Williamson, Fulton; J. Swan T. McDonald, Moberly; Lorenza Ordlethede, Columbia; and A. C. Hall, Longmont, Colo.

*Victor Barth Clothing Co.*  
In Its Centennial

I. A. BARTH

Ninth and Broadway

Alumni Patronize Alumni Advertisers

They have one daughter, Dorothy Luten, born October 22, 1927.

Les C. Dulce, B.S. in Eng. '17, is an extensive farmer at Gralsheim, Mo. He married Miss Beesie C. Lyle in 1926. They have one daughter.

Reese H. Elford, A.S. & B.S. '37, Delta Upsilon, Sigma Delta Chi, Director of the Lee School of Journalism, Washington & Lee University, Lexington, Va., spent the summer in Columbia, being special work in the School of Journalism. He married Miss Velah Fry of Kansas City. They have two daughters, Harriette Virginia, ten, and Elizabeth Jeannette, four.

Robert L. Howard, A.B. '17, A.M. '18, L.L.B. '25, Phi Beta Kappa, Order of Coif, Phi Delta Phi is a member of the faculty of the School of Law, 200 Lee B. Tate Hall. He married Miss Loreta Wray, former student, of Jackson, Mo. They live at 207 Westmont.

Dr. W. W. Knappever, A.B. '17, Phi Beta Kappa, graduate of the Higginville, Mo. High School, M.D., Washington University '20, C. P. H., Johns Hopkins '22 is a Physician, Natchitoches, La. He married Miss Adele Penton of New Orleans in 1927. They have three sons, Bill, four, Bobbie, two, and Jack, born on March 3, 1929.

Paul G. Kossin, A.B. '17, Order of Coif, Phi Alpha Delta is an Attorney, 600 Fidelity Bldg., Kansas City. He married Miss Mildred K. McIride, B.S. in Ed. '11, Phi Psi, '24. They have a daughter, Miss Annette, three. We are counting on her enrolling in the University.

Carlisle Fox, Arts & Law '17, K. A., is cashier of the New Mountain Grove, Mo. Bank. He married Miss Eunice Bealin of Mountain Grove in 1928.

Dr. Lloyd J. Thompson, A.B. & Medical certificate '17, Phi Beta Kappa, Phi Psi, Phi Chi, Band & Orchestra is in the Department of Mental Hygiene and Psychological University Sterling Hall of Medicine 333 Cedar St. New Haven. He married Miss Joseph E. Williams in '17. They have a son and daughter. Dr. Thompson's father Dr. G. B. Thompson attended the University in the sixties.

Miss E. Y. Fether, A.B. '18, Phi Beta Kappa, W.S.G.A., graduate of the Independence, Mo., High School, visited the alumni office recently on her way to Iowate City, Kans., where she is a social worker. It was her first visit here since graduation.

V. S. Garnett, B.S. in C.E. '28, graduate of the Columbia High School is a civil engineer, Interstate Natural Gas Co. Monroeville. He married Miss Lela M. Windsor of Columbia in 1928.

Miss Irene O'Brien, '28, of Gallatin, Mo., state rural school supervisor, was recently seriously injured in an automobile accident near Turley, on August 30.

Frank Ridgway, B.S. in Ag. and Journalism '28, Kappa Sigma, Farm House graduate of the Charney, Mo., High School, has been appointed Director of Information, Federal Farm Board, Washington, D. C. He married Miss Angie Richmond of Paris, Mo., in 1920. They have one son, Mr. Ridgway has been agricultural editor of the Chicago Tribune for ten years, was formerly on the editorial staff of the Chicago Daily Drovers Journal and in 1918 had charge of publicity Missouri State Fair.

Mrs. Leon Barnes, formerly Stella Mae Minor, B.S. in Ed. '19, of Miami, Mo., and Mr. Barnes, are living in North Ward.

Warren B. Fowler, B.S. in Eng. '29, C.E. '28, graduate of the Vandalia (Mo.) High School, Gregory senior scholarship 1919-22, Phi Beta Kappa, is a structural engineer with Black & Veatch, 4609 Main St., Kansas City, and is also bridge engineer for Stuyton (Col. E. M. Stuyton, '29-34) and Veatch in the construction of the Jackson County roads under the six and one-half million dollar bond issue. Mr. Fowler married Miss Dorothy Bellingham of Elsen, Mo., in 1924.

Miss Helen Bralnard, B.S. in Ed. '20 teacher in the Meservey School, Kansas City, spent the summer at her home in St. Louis. Her sister, Mrs. Albert Wm. Rader, of Cleveland Heights, O., formerly Miss Ada Bralnard, received an A.B. in 1920.

Dr. Hiram Curvey, A.B. '20, A.M. '28, visited here recently on his way to Los Angeles to become chief resident physician of the General Hospital which contains 1500 beds. Dr. Curvey married Miss Ethel C. Bush, A.B. '22.

S. R. Peltason, '20-24, is Acting Regional

Traffic agent, Universal Aviation Corporation Eastman's Bank Bldg., St. Louis, Mo. Thos. M. Rolter, A.B. '28, A.T.O., is in the chemistry department, Iowa State College, Ames. His home was formerly in St. Louis, Mo.

Mrs. C. Dewey Tompsett, formerly Edna E. Malind, B.S. in Ed. & Life Certificate '20, Alpha Delta Phi, graduate of the Joplin Miss High School, now living in Albany, N. Y. 265 2nd Ave., visited the University recently. Mr. Tompsett attended the University for one year. They have one son, Arthur Edward, five.

Raymond D. Wray, B.J. '20, Sales Manager, C. V. Mosley, Medical Publishing Co., St. Louis, and Mrs. Wray, formerly Henrietta Bohman B.S. in Ed. '22, Director of Physical Education, University City, Mo., have returned from a vacation trip to Washington, D. C.

Flores G. Marshall, '23-25, is living in Hollywood, Calif., 2907 Norton Ave.

Miss Agnes B. Moore, B.S. in Ed. '23, playground instructor in Chicago, residence 2200 Winona, Ravenswood Station, Chicago, visited here recently.

Joseph R. Homser, B.S. '27, Kappa Tau Alpha, Alpha Delta Sigma, student senate, Journalism Play Finance Chairman '21-22, formerly in the Market Research Dept., Georgian-American, Atlanta, Ga., and Mrs. Homser, formerly Madeline Rose, Plant of St. Louis, and their daughter, Madeline Rose, six, have moved to Baltimore, Md., where Mr. Homser is an advertising executive for the Hearst Newspaper. They will be located in Baltimore until next spring, when he will travel extensively.

Mrs. C. I. Dunn, formerly Marguerite Greer, B.S. in Ed. '22, graduate of the Mexico (Mo.) High School, is living in Tulsa, Okla. S. College, where Mr. Dunn is business manager, University of Tulsa. They have two children, Carl, Jr., four, and Maurice Greer, one.

Miss Caroline Hartwig, A.B. '22, B.S. in Ed. '21, A.M. '22, Central High School, St. Joseph, has returned from a trip to Europe.

George P. Massingale, A.B. '22, Phi Beta Kappa, A.T.O., QEBB, Track star of 1920, Secretary Treasurer, St. Louis & Tonn, River Park Co., 91 of Pine St., St. Louis, visited the Alumni Recorder recently. He visited the Alumni Recorder recently. He is an Ed. '23, Alpha Phi. They live at 327 N. Boonville, University City, Mo.

Margus M. Mosher, '22-24, Prosecuting Attorney of Linn Creek, Camden County, Mo., has filed suit to prevent the construction of the \$20,000 dam project at Bagnell. The dam has already been started. The town of Linn Creek will be wholly submerged by the water in the lake formed as a result of the dam.

Russell T. (Duke) Shoop, '22-27, has been appointed Jefferson City correspondent of the Kansas City Star. Duke was their correspondent in Columbia while he was in school and recently has been on the Star staff in Kansas City. The editor of the Alumnus is indebted to Duke for the wonderfully fine pen and ink duck shooting

## Jackson-Finley Grocery Co.

The safe place to trade

Phone 207 8th & Cherry Sts

## Homer Croy

The Man from Missouri, famous as the author of that best-seller, *West of the Water Tower*, has done it again. He has told the inside story of America's Favorite Playground in a novel which is, he admits, "as full of atmosphere as a Bermuda Onion." If you have ever ridden on a roller coaster, if you have ever washed down a hot dog with a glass of pink lemonade, if you have ever taken a shot at the nigger baby, or a chance on the basket of fruit—or even if you haven't, don't miss the biggest two dollar's worth of romance, love and excitement of the year. Read

## CONEY ISLAND

*Lindenwood*, the beautiful college for women, founded in 1827, St. Charles, Missouri. You will be interested in knowing something about this historic woman's college. Courses of interest to every student. For catalog apply to Dr. John L. Roemer, Box M. A. 29, St. Charles, Missouri

# In St. Louis



## Hotel Lennox

*9th and Washington*

St. Louis' newest and smartest hotel. In the heart of business district. 400 rooms, every one with bath and shower. Dining room Coffee Shop. Garage service.

**400 ROOMS** — \$3.<sup>50</sup> to \$7  
**BATHS**



## Hotel Mayfair

*8th and St. Charles*

In the center of theatre and shopping districts. Floor lamps, fans, circulating ice water in every room. The quiet, refined atmosphere of an exclusive club—an hotel of distinction. Dining room. Coffee shop. Garage service.

**400 ROOMS** — \$3 to \$6  
**BATHS**



## Hotel Kings-Way

*West Pine at Kingshighway*

Opposite beautiful Forest Park. Near bus, street car and motor highways. 20 minutes from downtown. Club breakfasts, table d'hote dinners. Room rate \$4 for two. Special rates for permanent guests.



**Heiss Hotel System**



Owners and Operators

drawing which appeared in the Kansas City Star of September 14.

John N. Vinyard, B.S. in Eng. '22, is an Eng. in a Chicago office, 436 W. Ave. H. and Mrs. Vinyard, formerly Helen M. Finley, A.B. '18, live at 4920 Colton Ave., Chicago.

Lawrence Hahly, A.B. & B.J. '23, A.M. '29, son of Mr. and Mrs. J. C. Hahly, Columbia, is enrolled in the University of Wisconsin, where he has a scholarship.

Harvey Lewis Brown, B.S. in Eng. '23, graduate of the Illinois, Mo. High School, with the Westinghouse Electric Mfg. Co., Lacon, Illinois, Box 403. He is Secretary-Treasurer of the Chicago engineers and is one of our most enthusiastic alumni.

He has just sent us \$100 for the Alumni Fund. Frederick P. Gutekunst, '23-24, former Professor of German in the University, and his wife and two daughters, visited here recently. He has been teaching in Columbia University while working on his Doctor's degree. His nephew from Moberly is enrolled in the University.

R. H. Cooper, Jr., B. & P.A. '24, graduate of the Northeast High School, Kansas City, is Secretary of the Chamber of Commerce, Oak Park, Ill., and attend the Chicago Kent School of Law. He married Miss Pearl V. George of Plainfield, Ill., on June 25, last.

Miss Mary L. Cracraft, B.S. in Ed. '24, Jackson, Mo. is teaching Expression in Lindenwood College, St. Charles.

Emil H. Eisenztrager, A.B. '24, 978 Whitlock Ave., New York City is teaching history in the Erasmus Hall High School, Brooklyn.

Walter B. Ellwood, A.B. '24, and Mrs. Ellwood, and their daughter, Joan, visited Mr. Ellwood's parents, Prof. Mrs. C. A. Ellwood here recently. Mr. Ellwood and his family spent the summer in Europe. He is a student again in the Graduate School of Columbia University, studying for a Ph.D. degree.

J. Barnard Gibbs, B.S. in Ag. '24, Gregory Research Scholarship Agricultural Statistician for West Virginia. U. S. Department of Agriculture, is attending Columbia University this year, where he has a social science fellowship.

Dr. G. Willie Robinson, Jr., A.B. '24, 824 Medical Arts Bldg., Kansas City, Mo., is associated with his father in the G. W. Robinson Sanitarium Co.

Robert M. Smith, B.S. in Ag. '24, M.S. in Poultry '26, Sigma Delta Gamma Alpha, is instructor in Poultry, University of Arkansas, Fayetteville. His home was formerly in Memphis, Mo.

Donald Van Agge, Arts & Law '25, Phil Delta Phi, student senate is living in Joplin, Mo., 805 Joplin National Bank Bldg.

Anthony A. Buford, A.B. '25, K. A. of Millington, Mo., was Secretary with headquarters in Independence, of the Joint Opening Celebration Committee, Dedicating the Independence Highway Bridge, on October 5.

Erin W. Durant, '25-26, of Mobile, Ala., visited here recently with her brother, Dr. A. J. Durant and family.

Charles E. Mannabatt, Jr., A.B. '25, Phi Beta Kappa, Alpha Psi Zeta, Alpha Kappa Psi Saviar Staff, Associate Editor 1925 Savitar, auditor for the Oklahoma Gas and Electric Company, P. O. Box 1498, Oklahoma City, and Mrs. Mannabatt, formerly Elizabeth Ellen Meek of Joplin, Mo., A.B. '26, visited the Alumni office recently on a motor trip from Mr. Mannabatt's home in Peoria, Ill. P. H. Ferris, A.B. '26, is also with the Oklahoma Gas and Electric Co., Oklahoma City.

Gerald E. Annin, B.S. in Ag. '26, Alpha Zeta, is an extensive farmer, Chillicothe, Mo.

Gerald M. Garvey, B.S. in Ed. '26, Band & Orchestra, Phi Mu Alpha, Phi Delta Kappa, is Director of Instruction, Moberly, in the Public Schools, Marshalltown, Ia.

Walter T. Carpenter, B.S. in B & P.A. '26, Lambda, Delta Sigma Pi, is with the Armstrong Cork Company, 522 Plymouth Bldg., Minneapolis, Minn.

Henry Depping, L.L.B. '26, assistant attorney general, Jefferson City, according to the "in Missouri" section of the Missouri City Star, is a strong believer in 5-cent cigars, and the economy thereby accomplished. Recently he visited Europe, before leaving he stocked up with 100 of his favorite brand and was ready to smoke his way through Europe at reduced rates. In England he failed to declare his cigars and customs authorities assessed him \$8. In Berlin Mr. Depping again forgot his

cigars and the authorities there collected \$60 more.

Miss Louise Novell, B.S. in Ed. '26, Alpha Phi, Columbia, is teaching physical education in the Navajo, Miss., Schools.

Clifton T. Paddock, A.B. '26, Assistant Secretary, Ralph E. Lucas, Inc., Insurance Company, Commerce Bldg., Kansas City, visited the alumni office recently. Frank Wheat, A.B. '25, is Vice-President of the company.

Mrs. A. M. Wilson, formerly Marie Mills, A.B. '26, Phil Mu, Alpha Zeta Phi, Mortar Board, L. S. V., Treas. & Pres. W. S. G. A., member Memorial Committee of Nine, 626 Westfield Ave., Elizabeth, N. J., has made reservations for the Missouri alumni dinner at the Park Central Hotel, Friday evening, November 15, and is making reservations for seats in the Missouri section for the N. Y. U. game the following day in the Yankee Stadium. She writes that her husband is attending N. Y. U. now but that if he will be with her at the Missouri-N. Y. U. game he will sit on the Missouri side.

Miss Gladys Wheat, B.S. in P.A. '27, is doing excellent art work these days. Yesterday a handsome book of the University of Missouri is published in a de luxe edition limited to one hundred volumes numbered and autographed. It consists of thirty illustrations each, eleven of which depict familiar scenes on the campus. Preceding each scene is a brief descriptive caption. Other lettered cuts complete the book which is published by Miss Wheat, in her

studio at 711 Missouri Ave., Columbia, Mo.

Books are on the market now. Jane M. Barnes, B.S. in Ed. & M.A. '27, is superintendent of schools, Carl Junction, Mo. Miss Ruth Ridgway, graduate of Christian College, daughter of Mr. and Mrs. Walter Ridgway of Columbia, is supervisor of music in the Carl Junction Schools this year.

Miss Florence M. Bishop, Arts & B. & P.A. '27, Phi Chi Theta, is doing public health nursing in the School Division, Inwood, Mich., 621 Tronbridge.

Helena E. Bishop, B.S. in Ed. '27, Alpha Gamma Delta, is a teacher, 7239 80th Ave., Webster Groves, Mo.

Robert A. Campbell, A.B. '27, Sigma Xi, Mystical Seven, Chairman, Harvesting Committee, '26, is with the firm of Cox & Trainer, Investment Company, 274 Madison Avenue, New York, residence 9 West 54th St.

Daphne Crawford, A.B. '27, Phi Beta Kappa, is instructor of Spanish and Chemistry, Nebos, Ill., home address, Lankenau, Mo.

Laura M. Ketting, B.S. in Ed. '27, is teaching in Ste. Genevieve, Mo.

Louis Kohn, A.B. '27, Phi Beta Kappa, Zeta Beta Tau, Eta U. Mo., associate editor Savitar, Vice-President College of Arts and Science, senior in the Harvard Law School, visited the alumni office a few days ago on his way back to Cambridge.

Robert L. Riggs, A.B. & B.J. '27, Kappa Tau Alpha, Ironton, Mo., is Assistant State Editor, Louisville (Ky.) Courier-Post.

## NOTICE

Dean Tisdell Announces the First Annual

# ARTS AND SCIENCE WEEK

Alumni Out!

## PROGRAM

December 5th

7:30 p. m.

Debate: University of Missouri versus University of Oxford

Question: Resolved that the United States cannot expect to have her debts paid until her tariff barriers are substantially reduced.

9:00 p. m.

Arts and Science Smoker.

December 6th

8:15 p. m.

Arts and Science Play  
"The Cradle Song"

by  
G. Martinez Sierra

December 7th

9:00 a. m.

Junior College Conference  
"Some Junior College Problems"  
David A. Robertson—The American Council on Education Discussion

12:00 noon

Junior College Luncheon

1:30 p. m.

"Social Studies in the Junior College"

"The Curriculum"

by  
Dean J. J. Oppenheimer—Stevens College

"The Library"

by  
W. A. Lewis, Junior College of Kansas City

"The Training of the Social Science Teacher"

by  
Dean F. A. Middlebush, University of Missouri

1:30 p. m.

Meeting of the University of Missouri section of the American Chemical Society

3:30 p. m.

The relation of the American Council on Education to research and personnel work in Colleges and Universities

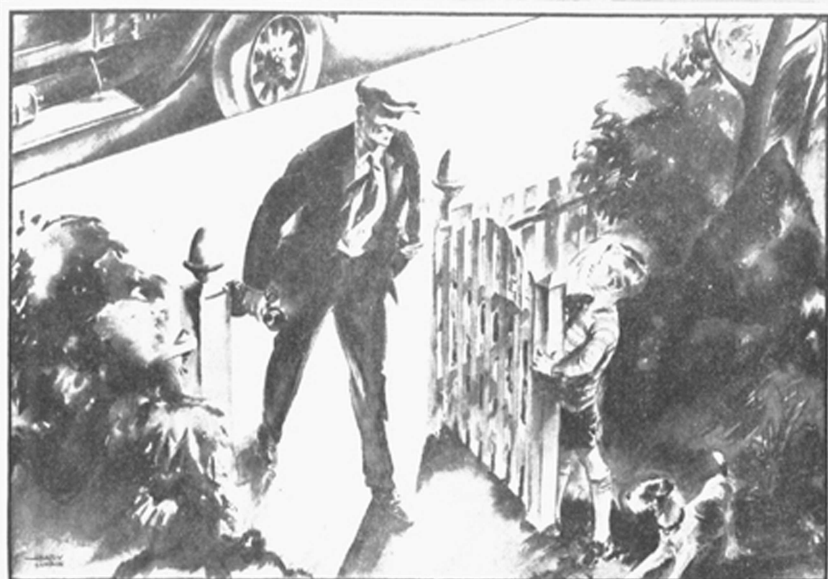
Discussion led by David A. Robertson of The American Council on Education

5:30 p. m.

Arts and Science Dinner for Alumni, Faculty, Students and Junior College Delegates

9:00 p. m.

Arts and Science Dance



800,000 ADDITIONAL TELEPHONES ARE GOING INTO USE THIS YEAR

## A million and a half dollars a day

*An Advertisement of the  
American Telephone and Telegraph Company*

MORE than 200 new Bell telephone buildings are going up this year in the United States, 800,000 additional telephones are going into use and new switchboards to care for 3,000,000 additional calls a day.

Thousands of miles of new cable, millions of miles of wire, new carrier systems, vacuum tubes and loading coils. These are a few of the things in the 1929 construction and improvement program of the Bell System which will cost more than 550 million dollars—a million and a half a day.

Telephone growth is essential to the new American civilization of better opportunity for the average man. The Bell System employs more than 400,000 workers,



is owned by 450,000 stockholders, and serves the people of the nation.

Every day the Bell System is extending its lines to more people, increasing the speed and accuracy of its service, giving greater comfort and convenience in telephone use. All of this is done that each individual may get the most from this means of all inclusive and instantaneous communication and that the nation may be one neighborhood.

This is part of the telephone ideal that anyone, anywhere, shall be able to talk quickly and at reasonable cost with anyone, anywhere else. There is no standing still in the Bell System.



## College Headquarters

Centrally located in the heart of the business and theatrical districts, the Hotel Baltimore is indeed "the convenient hub of the city's activities." The largest hotel in Kansas City, the Baltimore is equipped to answer every need—500 comfortable, fire-proof rooms priced from \$2.00 to \$7.00, a Coffee Shop, a Grill, a Cafe all serving the famous Baltimore quality foods, Independent of any other local hotel, the Baltimore stands ready to offer you every convenience and every comfort.

*Meet your friends at the Baltimore.  
Make it your headquarters while you  
are in Kansas City.*

# Hotel Baltimore



# OFFICIAL MISSOURI HOTELS

## Where Tigers Meet

The hotels listed on this page have been designated as the official headquarters for Missouri men and women.

Members of the faculty, alumni, and of the student body are invited to avail themselves of the hotel facilities while traveling throughout the state. These hotels are not selected at random, but with the purpose of selecting those which can best serve the college graduate.



Hotel Connor at Joplin,  
H. S. SIMON, Manager



The New Leeper at Chillicothe  
Berr T. Clark, Sr., Manager



Hotel Marquette, Cape Girardeau,  
H. F. TUPPER, Manager



The Mark Twain at Hannibal,  
Louis J. Huegel, Manager

### Hotel Frederick

Boonville, Mo.

Guy Million, Manager



Missouri Hotel, Jefferson City, Mo., Walter B. Simpson,  
Managing Director

### Kentwood Arms Springfield, Missouri

John T. Woodruff, Pres.  
Frank J. Volker, Mgr.

For further information communicate with the Alumni Office, 217 Jesse Hall, Columbia.

# American Color Engraving Co.



Artists, Designers  
Photo-Engravers

*For All Printing  
and Advertising Purposes*

914 Pine St.

St. Louis, Mo.



See the  
**Tigers in Action**

Special Low Fare Excursions  
over the *Wabash Railway*

**MISSOURI vs. KANSAS**

Lawrence, Kansas---November 23, 1929

Round Trip Coach Fare Columbia to Kansas City \$5.00

Dates of Sale: Train 22-3 and 26-9 also Extra leaving Columbia 5:00 a. m. November 22 connecting with 51 at Moberly November 22.

Return Limit: Leave Kansas City not later than train 15 Nov. 23.

Round Trip Rate (Missouri Stations to Lawrence Kans.) Fare and One Third.

Dates of Sale: All Trains November 22. Return Limit: Arrive original starting point before midnight, Nov. 24.

Excursion Fares From Principal Points to Lawrence, Kansas

St. Louis	.....\$15.30	Mexico	.....\$10.02	Macon	.....\$ 9.30
Columbia	..... 10.08	Moberly	..... 8.20	Kirkville	..... 9.50
Centralia	..... 9.56	Carrollton	..... 5.18	Hannibal	..... 11.54
		LaPlata	..... 9.30		

Also Excursion Fares from many other points. See Wabash Ticket Agent.

For Further Information and reservations see any Wabash Ticket Agent

**H. E. WATTS**  
Passenger Traffic  
Manager, Wab. Ry.,  
1450 Railway  
Exch. Bldg.,  
St. Louis, Mo

**OKLAHOMA vs. MISSOURI**

Columbia, Missouri Nov. 28, 1929

Round Trip Rates (Missouri Stations to Columbia, Mo.). One fare for round trip. Dates of sale--All trains arriving Columbia Nov. 28. Return Limit--Leave Columbia not later than train 38 Nov. 28.

Round Trip Rates (Missouri Stations to Columbia, Mo.). Fare and one-third. Dates of Sale--All trains Nov. 26 and 27. Return Limit--Arrive original starting point prior to midnight Dec. 2.

**ROUND TRIP FARES TO COLUMBIA, MISSOURI**

1 Day Return Limit

6-Day Return Limit

Kansas City	..\$6.13	Moberly	.....\$1.65	Kirkville	.....\$3.70	Kansas City	..\$8.18	Moberly	.....\$2.20	Kirkville	.....\$4.94
St. Louis	..... 5.25	Carrollton	..... 3.92	LaPlata	..... 3.21	St. Louis	..... 7.00	Carrollton	..... 3.28	LaPlata	..... 4.28
Mexico	..... 1.30	Macon	..... 2.46	Chillicothe	..... 4.43	Mexico	..... 1.74	Macon	..... 3.28	Chillicothe	..... 5.91
		Maryville	.....\$7.28					Maryville	.....\$10.38		

Also Excursion Fares From Many Other Points

Also Excursion Fares From Many Other Points

# Join

the Book-of-the-Month Club  
now—while you can get

## The First Book FREE

*A special offer—see reason for it below*



GREAT many people (we know) have been on the verge of joining the Book-of-the-Month Club, but have neglected to do so largely through oversight. This special offer is made, frankly, to overcome this procrastination by making it worth while for you not to delay longer. We suggest simply that you get full information at once about what the Book-of-the-Month Club does for you, and then decide once for all whether you want to join. The mere fact that more than 100,000 judicious book-readers already belong to the organization—that they represent the elite of the land in every profession and every walk of life—that not a single one was induced to join by a salesman or by personal solicitation of any kind, but did so after simply reading the facts about what the Club does for book-readers—all these are indications that it is worth your while at least to get these facts as quickly as possible, and then (if you want to) join and get your first book free. You assume no obligation in sending the coupon below for full information.

Six distinguished foreign authors now serve as an International Advisory Committee for the Book-of-the-Month Club. The function of the individuals in this foreign group perform is to keep our judges advised about what they consider the significant new books published abroad, each in his own country. The Committee consists of:

FOR ENGLAND:  
H. G. Wells  
and  
Arnold Bennett  
FOR FRANCE:  
André Maurois  
FOR GERMANY AND  
AUSTRIA:  
Thomas Mann  
and  
Arthur Schnitzler  
FOR SCANDINAVIA:  
Sigrid Undset



Henry Seidel Canby  
Chairman



Raymond Brown



Dorothy Canfield



Christopher Morley



William Allen White

THE EDITORIAL BOARD OF THE BOOK-OF-THE-MONTH CLUB

BOOK-OF-THE-MONTH CLUB, Inc.  
366 Fourth Avenue, New York, N. Y. 51-11

Please send me, without cost, a booklet outlining how the Book-of-the-Month Club operates. This request involves me in no obligation to subscribe to your service.

Name.....

Address.....

City.....

Books shipped to Canadian readers through  
International Book-Order Club, Toronto, Ontario