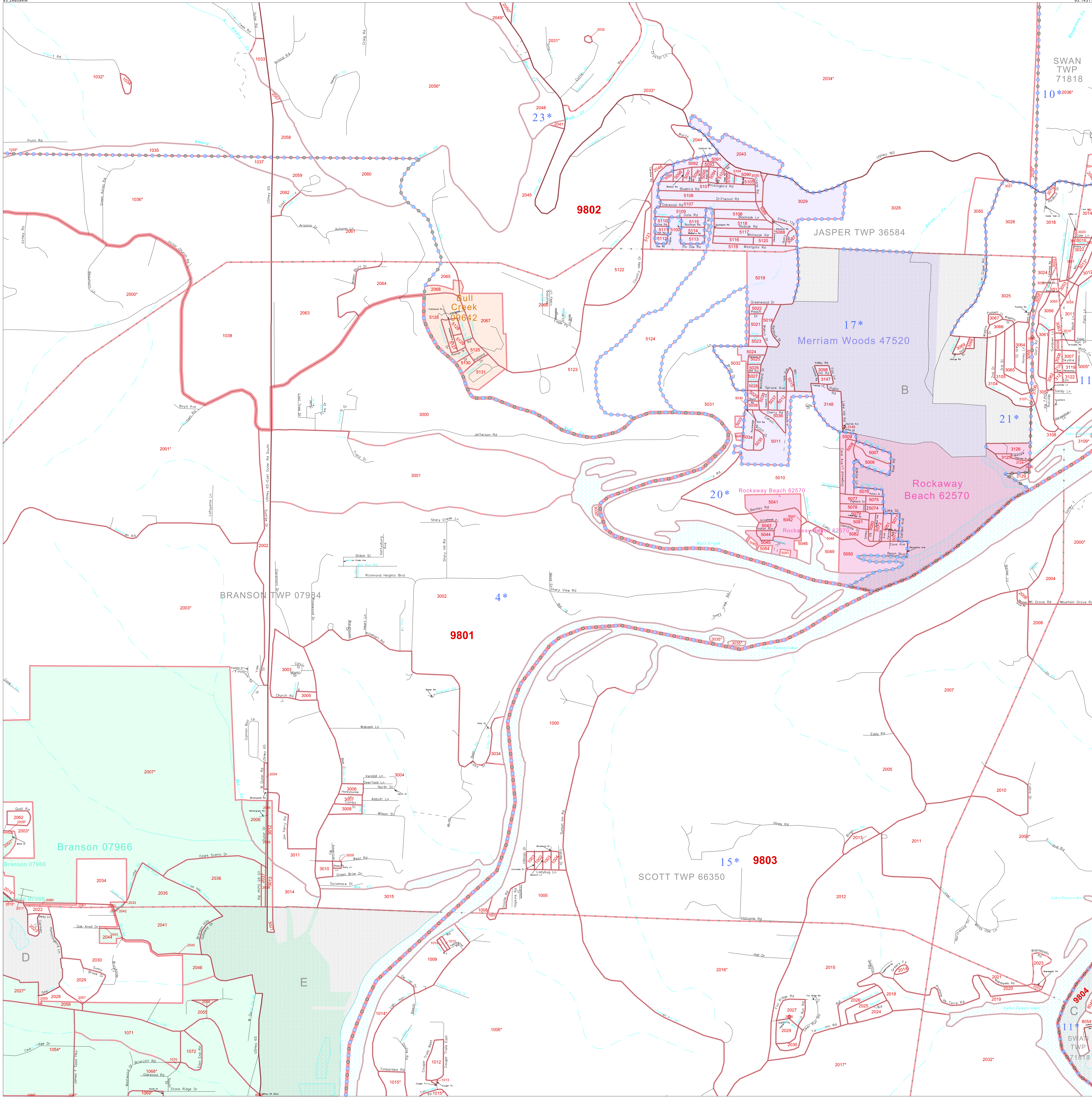


P. L. 94-171 COUNTY BLOCK MAP (CENSUS 2000)

36 740286N
93 248084W

36 740286N
93 143115W



GEOGRAPHIC AREAS LEGEND

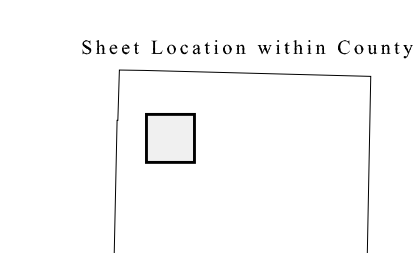
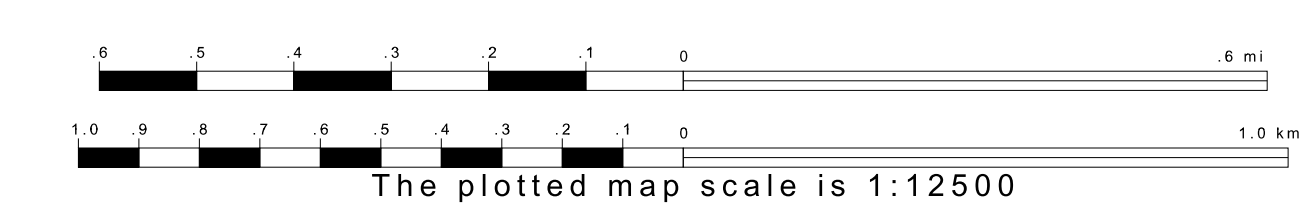
SYMBOL	NAME STYLE
*****	INTERNATIONAL
//////	STATE
■■■■■	COUNTY
●●●●●	MINOR CIVIL DIV. ¹
Yellow/Pink	Incorporated Place ¹
Light Green/Pink	Census Designated Place ¹
.....	Corporate Offset Boundary
.....	Voting District ²
Red	Census Tract ³
Blue Dotted	Military

Inset Out Area

1 A "*" following a place name indicates that the place is coincident with a MCD. A "-" indicates that the place is also a false MCD. In both cases, the MCD name is shown only when it differs from the place name.
2 A "*" following a VTD code indicates an actual voting district. Its absence indicates that the VTD is a pseudo voting district or no information is available as to its status.
3 A "*" following a block number indicates that the block number is repeated elsewhere in the block.

36 657312N
93 248084W

36 657312N
93 143115W



Key to Adjacent Sheets

1	2	3
7	8	9
13	14	15

ST: Missouri (29)
COU: Tany (213)
SHEET 8 OF 24 PARENT SHEETS

All legal boundaries and names are as of January 1, 2000. The boundaries shown on this map are for Census Bureau statistical data collection and tabulation purposes only; their depiction and designation for statistical purposes does not constitute a determination of jurisdictional authority or rights of ownership or entitlement. U.S. DEPARTMENT OF COMMERCE Economics and Statistics Administration U.S. Census Bureau

