

P.L. 94-171 VOTING DISTRICT/STATE LEGISLATIVE DISTRICT OUTLINE MAP (CENSUS 2000)

36 736967N
92 941277W

36 736967N
92 743558W

GEOGRAPHIC AREAS LEGEND

SYMBOL	NAME STYLE
*****	INTERNATIONAL
//////	STATE
□□□□□□	COUNTY
○ ○ ○ ○ ○	MINOR CIVIL DIV ¹
■ ■ ■ ■ ■	Incorporated Place ¹
■ ■ ■ ■ ■	Census Designated Place ²
—	Voting District
● ● ● ● ●	SLD-Senate
▲ ▲ ▲ ▲ ▲	SLD-House
□ □ □ □ □	Minority
□ □ □ □ □	Inset
□ □ □ □ □	Out Area

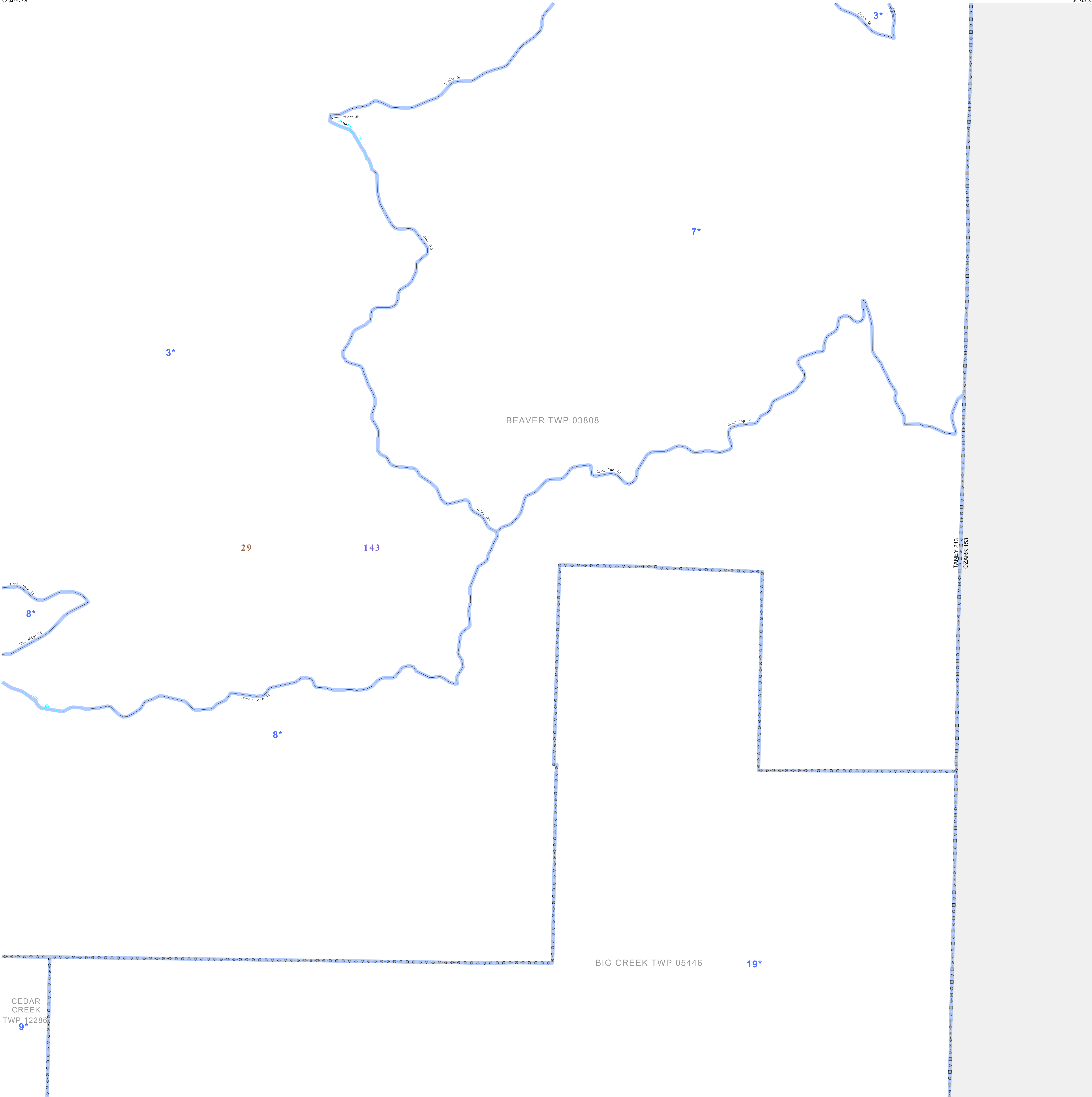
Abbreviation Reference: AIR - American Indian Reservation; SDAISA - State Designated American Indian Statistical Area

¹ A "*" following a place name indicates that the place is coterminous with a MCD. A "-" indicates that the place is also a CDP. In both cases, the MCD name is shown only when it differs from the place name.

² A "*" following a VTD code indicates an actual voting district. Its absence indicates that the VTD is a pseudo voting district or no information is available as to its status.

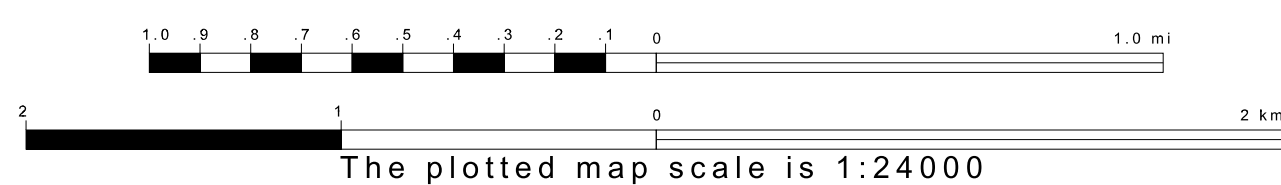
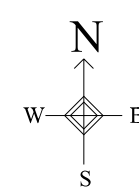
Voting Districts

Code	Name
3*	Bradleyville Voting District
7*	BraveBranch Voting District
8*	Bright Voting District
9*	CedarCreek Voting District
19*	Proton Voting District

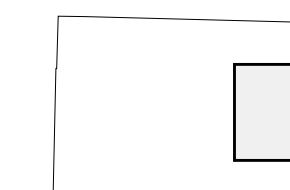


36 577657N
92 941277W

36 577657N
92 743558W



Sheet Location within County



Key to Adjacent Sheets

2	3
5	6
8	9

ST: Missouri (29)
COU: Taney (213)
SHEET 6 OF 9 PARENT SHEETS

