

P.L. 94-171 VOTING DISTRICT/STATE LEGISLATIVE DISTRICT OUTLINE MAP (CENSUS 2000)

37 89085N
91 171783W

37 89085N
90 970884W

GEOGRAPHIC AREAS LEGEND

SYMBOL	NAME STYLE
*****	INTERNATIONAL
//////	STATE
□□□□	COUNTY
○ ○ ○ ○	MINOR CIVIL DIV. ¹
■ ■ ■ ■	Incorporated Place ¹
■ ■ ■ ■	Census Designated Place ¹
—	Voting District ²
● ● ● ●	SLD-Senate
▲ ▲ ▲ ▲	SLD-House
⋯	Military
□	Inset
□	Out Area

Abbreviation Reference: AIR - American Indian Reservation; SDAISA - State Designated American Indian Statistical Area

1 A " " following a place name indicates that the place is coterminous with a MCD. A " " indicates that the place is also a MCD. In both cases, the MCD name is shown only when it differs from the place name.
2 A " " following a VTD code indicates an actual voting district. Its absence indicates that the VTD is a pseudo voting district or no information is available as to its status.

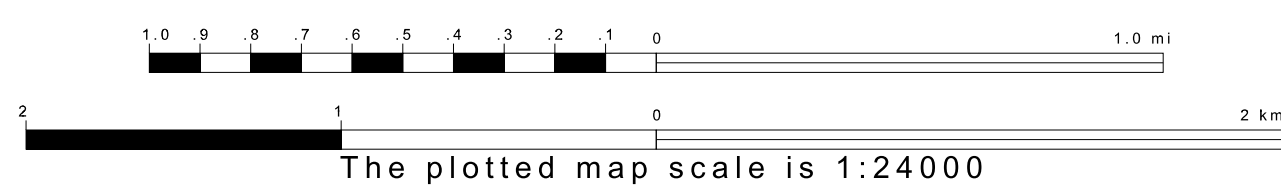
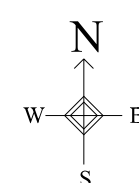
Voting Districts

Code	Name
3*	Belgrade Voting District
13*	PleasantPoint Voting District
17*	Shirley Voting District

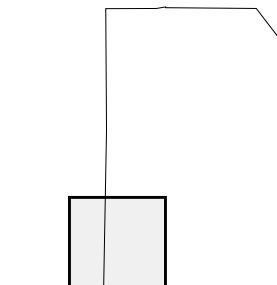


37 731631N
91 171783W

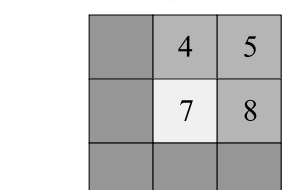
37 731631N
90 970884W



Sheet Location within County



Key to Adjacent Sheets



ST: Missouri (29)
COU: Washington (221)
SHEET 7 OF 9 PARENT SHEETS



P.L. 94-171 VTD/SLD OUTLINE MAP (Census 2000)
(CKPLVTD) 2172922100700000000