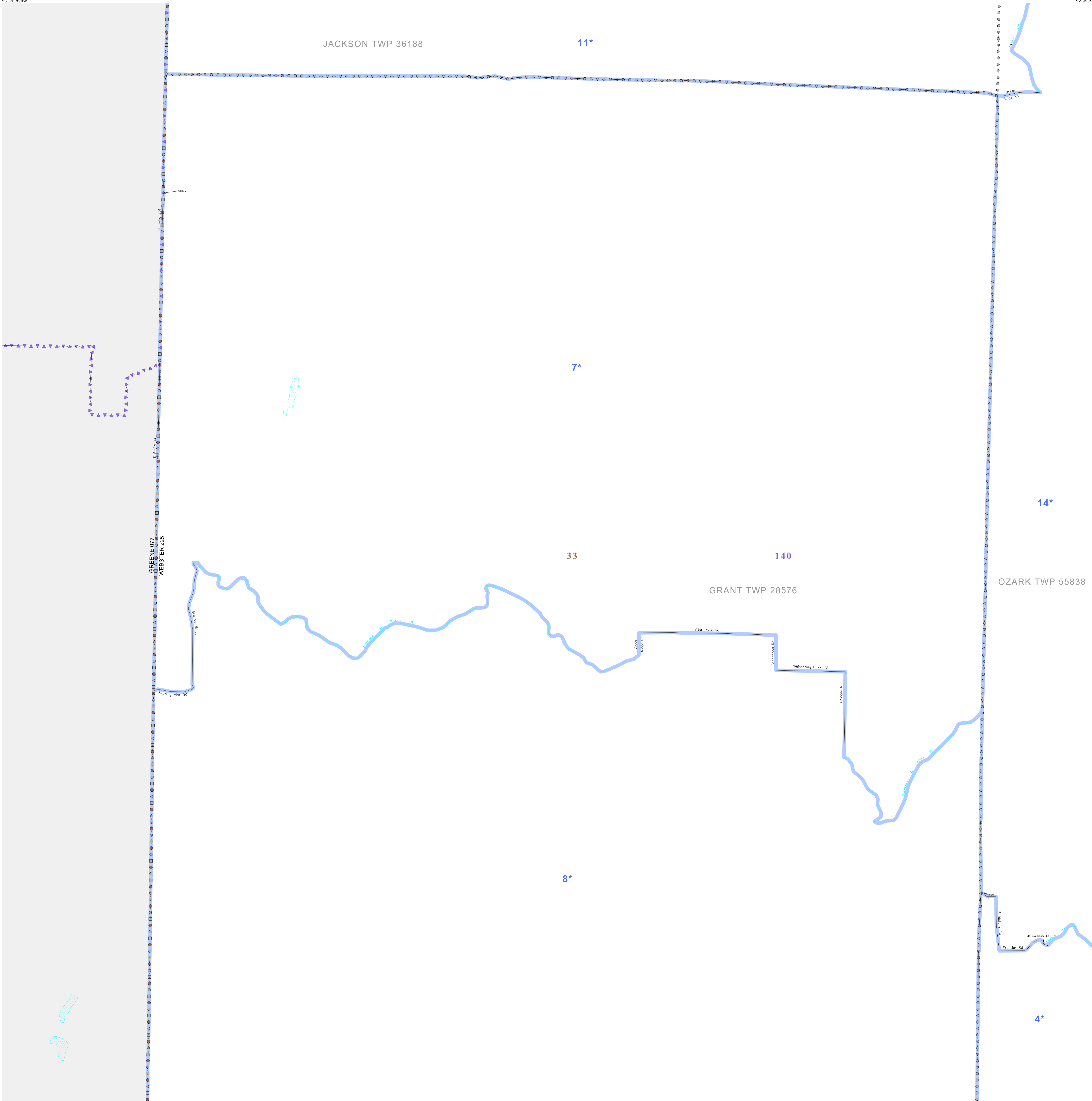


P.L. 94-171 VOTING DISTRICT/STATE LEGISLATIVE DISTRICT OUTLINE MAP (CENSUS 2000)

37 383358N  
93 095890W

37 383358N  
92 950549W



**GEOGRAPHIC AREAS LEGEND**

SYMBOL	NAME STYLE
*****	INTERNATIONAL
//////	STATE
□□□□	COUNTY
○	MINOR CIVIL DIV <sup>1</sup>
■	Incorporated Place <sup>1</sup>
■	Census Designated Place <sup>2</sup>
—	Voting District
●	SLD-Senate
▲	SLD-House
□	Moisture
□	Inset
□	Out Area

Abbreviation Reference: AIR - American Indian Reservation; SDAISA - State Designated American Indian Statistical Area

<sup>1</sup> A "\*" following a place name indicates that the place is coterminous with a MCD. A "-" indicates that the place is also a false MCD. In both cases, the MCD name is shown only when it differs from the place name.

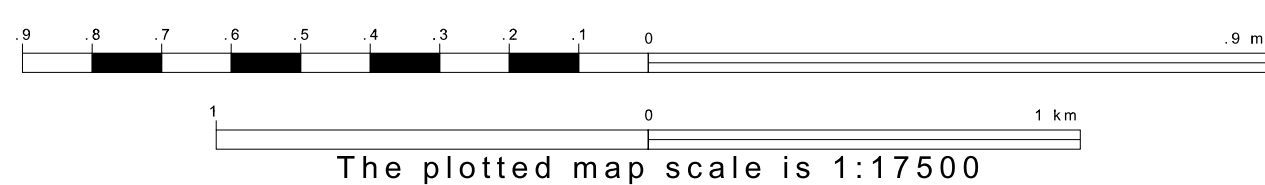
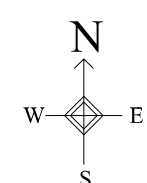
<sup>2</sup> A "\*" following a VTD code indicates an actual voting district. Its absence indicates that the VTD is a pseudo voting district or no information is available as to its status.

**Voting Districts**

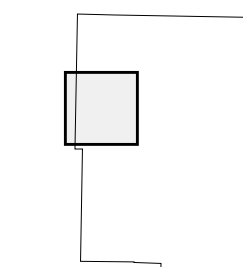
Code	Name
4*	DallasEast Voting District
7*	GrantNorth Voting District
8*	GrantSouth Voting District
11*	Jackson Voting District
14*	OzarkWest Voting District

37 277248N  
93 095890W

37 277248N  
92 950549W



Sheet Location within County



Key to Adjacent Sheets

1	2
4	5
7	8

ST: Missouri (29)  
COU: Webster (225)  
SHEET 4 OF 12 PARENT SHEETS

