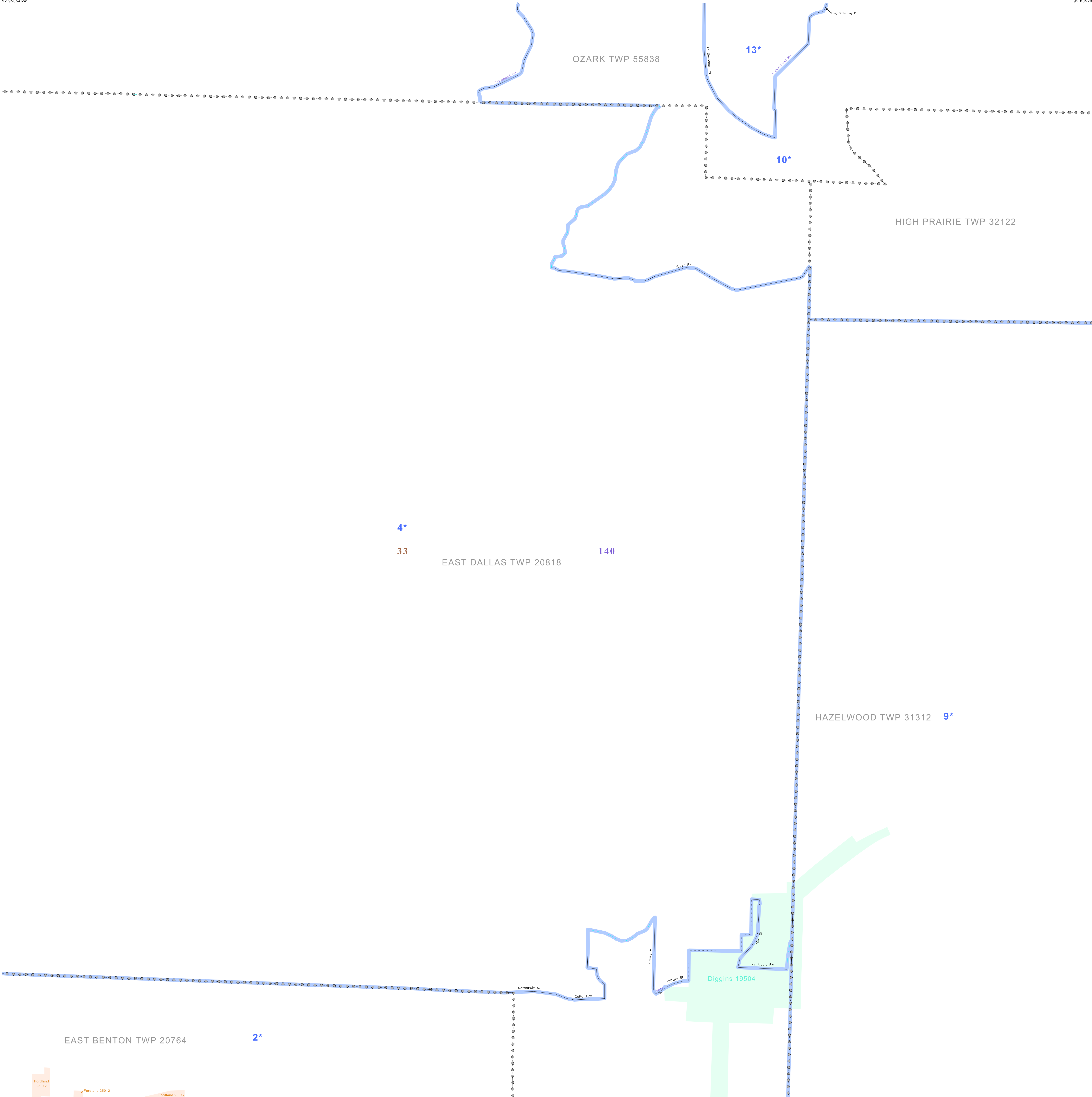


P.L. 94-171 VOTING DISTRICT/STATE LEGISLATIVE DISTRICT OUTLINE MAP (CENSUS 2000)

37 277248N
92 850460W

37 277248N
92 850460W



GEOGRAPHIC AREAS LEGEND

SYMBOL	NAME STYLE
*****	INTERNATIONAL
//////	STATE
□□□□□□	COUNTY
○●○●○●	MINOR CIVIL DIV. ¹
■	Incorporated Place ¹
■	Census Designated Place ¹
—	Voting District ²
●●●●●●	SLD-Senate
▲▲▲▲▲▲	SLD-House
□	Minority
□	Inset
□	Out Area

Abbreviation Reference: AIR - American Indian Reservation; SDAISA - State Designated American Indian Statistical Area

¹ A "*" following a place name indicates that the place is coterminous with a MCD. A "-" indicates that the place is also a false MCD. In both cases, the MCD name is shown only when it differs from the place name.

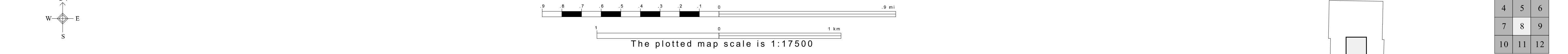
² A "*" following a VTD code indicates an actual voting district. Its absence indicates that the VTD is a pseudo voting district or no information is available as to its status.

Voting Districts

Code	Name
2*	BentonEast Voting District
4*	DallasEast Voting District
9*	Hazelwood Voting District
10*	HighPrairie Voting District
13*	OzarkEast Voting District

37 181097N
92 950460W

37 181097N
92 950460W



Sheet Location within County

Key to Adjacent Sheets

4	5	6
7	8	9
10	11	12

ST: Missouri (29)
COU: Webster (225)
SHEET 8 OF 12 PARENT SHEETS

