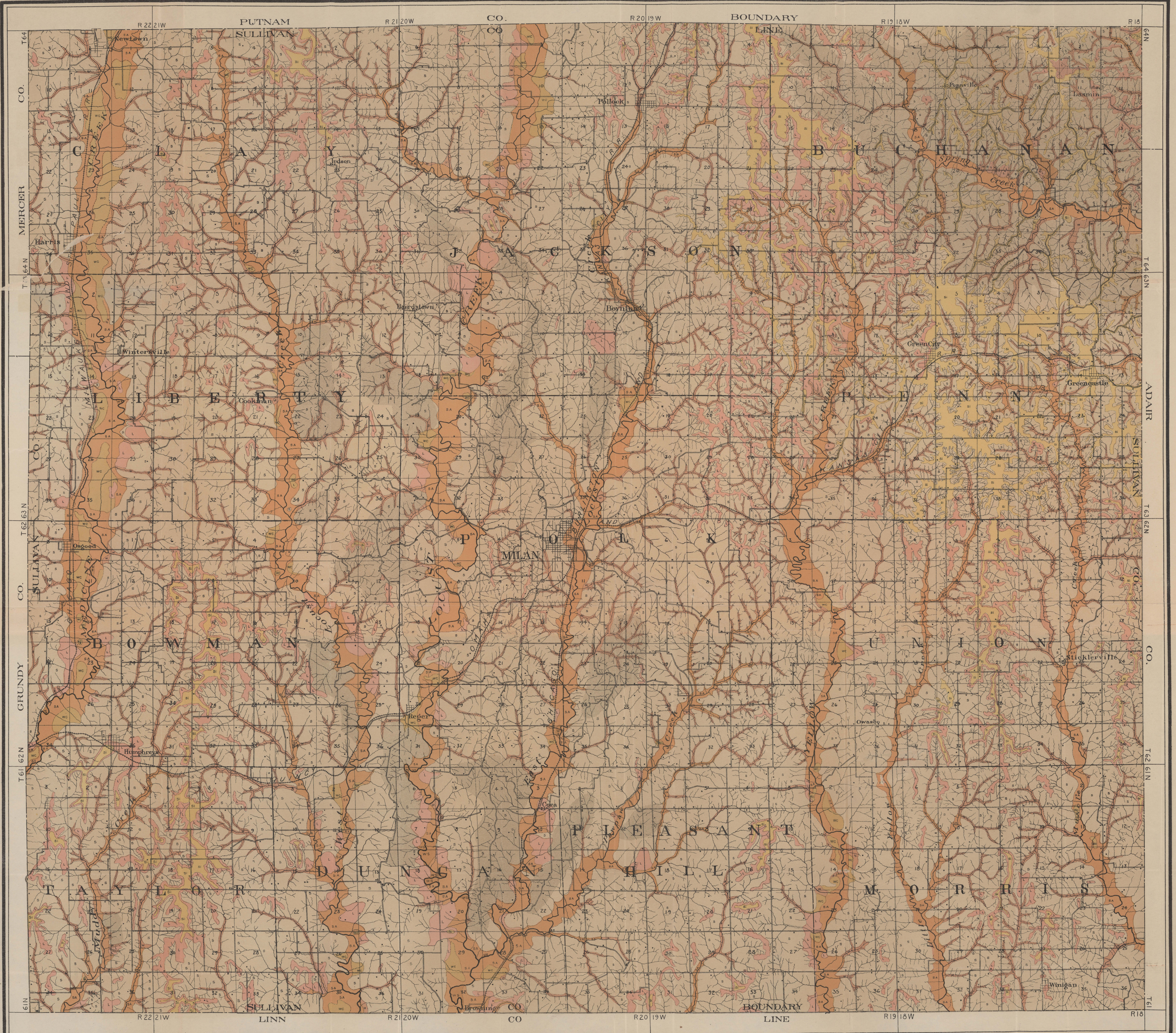


SOIL MAP
SULLIVAN COUNTY, MISSOURI



LEGEND

- Putnam Silt Loam (SI)
- Shelby Loam (S)
- Putnam Silt Loam (well drained phase) (L)
- Wabash Clay Loam (WC)
- Wash (W)
- Black sandstone, also in bottom of small valleys (SA)
- Waverly Silt Loam (WS)
- Waverly Fine Sandy Loam (WS)
- White Oak Land

- ROADS
- CITY BOUNDARY LINE
- CITY STREET
- COUNTY LINE

Soils surveyed by R. C. Donaghy, M. M. McCool, H. Kruzkopf and H. P. Ruak of the Missouri Experiment Station

