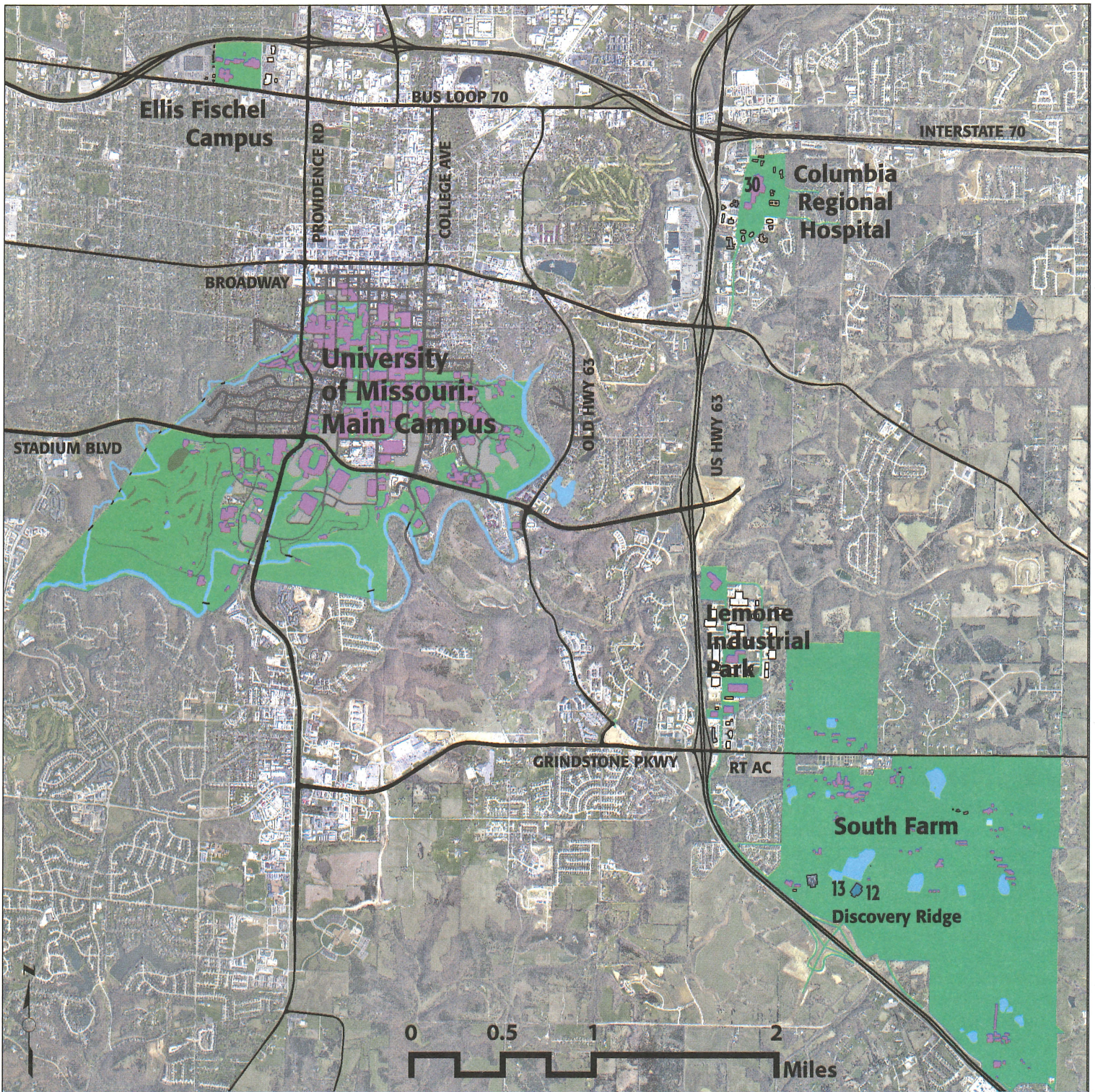

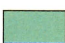



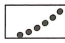





Regional Overview



Base Maps Legend

- | | | |
|--|--|---|
|  Existing university buildings |  University land, largely pedestrian but including service drives and small parking areas |  Major walks* |
|  University parking structures |  Recreation/athletic fields |  Major bikeways* |
|  Possible future structures |  Streams and ponds |  Parking lots |

*Note: Many walkways and bikeways are shown straight for diagrammatic clarity; in actuality many will be curved and shaped to topography, planting and buildings.