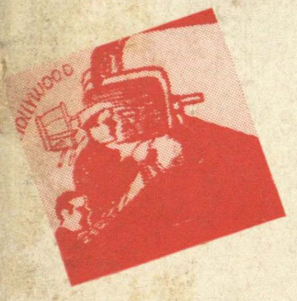


MISSOURI SHOWMAN



15¢
POLITICAL ISSUE





When you forget...

The guard says "No!"
 The girl says "OH!"
 And there's nothing a man can do—
 When the happiest day
 Gets spoiled some way,
 Let Beech-Nut comfort you!

Remember—there's comfort in
BEECH-NUT GUM

BEECH-NUT PEPPERMINT GUM... is so good it's the most popular flavor of any gum sold in the United States.

BEECH-NUT PEPSIN GUM... candy coating protects a pleasing flavor... and, as you probably know, pepsin aids digestion after a hearty meal.

BEECH-NUT SPEARMINT... especially for those who like a distinctive flavor. A Beech-Nut Quality product.

BEECHIES... another really fine Peppermint Gum—sealed in candy coating. Like Gum and Candy in one.

ORALGENE—its firmer texture gives much needed mouth exercise... and its dehydrated milk of magnesia helps neutralize mouth acidity. Each piece individually wrapped.



"Thirst Knows No Season"

DRINK

Coca-Cola

IN BOTTLES

THE PAUSE THAT REFRESHES



Hola-Touche!

ANNOUNCING THE
 REOPENING

of

**Gail Potter's
 Fencing Academy**

CLASS AND PRIVATE LESSONS

for

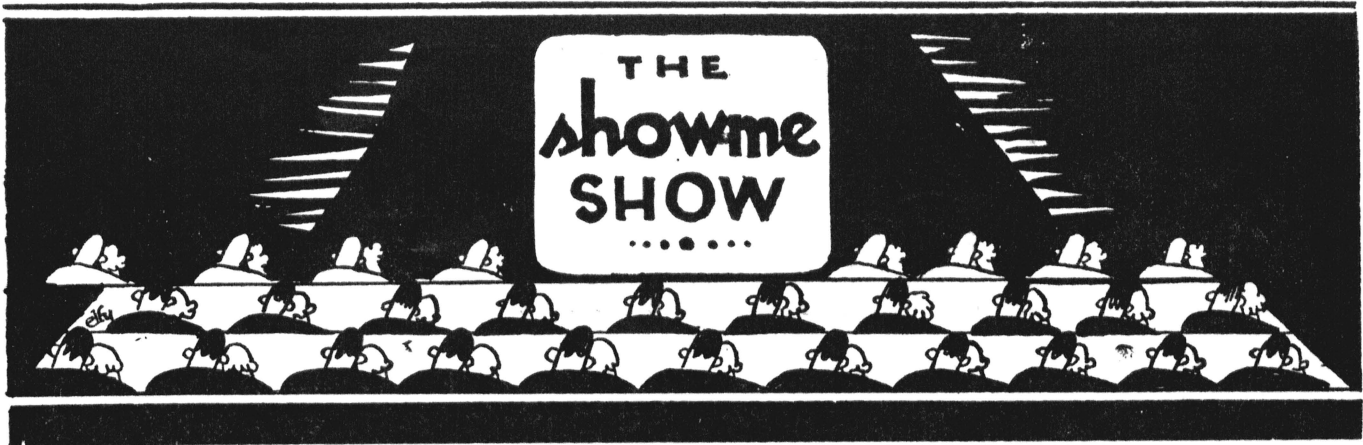
MEN and WOMEN

EXPERT INSTRUCTION

REASONABLE RATES

Dial 3186

203a S. 8th



Month's Best

The little pledge who curiously and wonderingly examined Betty Cabeen's Phi Psi pin and then asked, "What did you have to do to get that?"

Unexcelled Devotion

Jane Blake and Susie Benfey, Columbia Hall dwellers, waiting patiently in Gaeb's for their steady escorts, Ramsey and Cobb, A. T. O.'s.

Heine Mahley, Sigma Chi, is spending his time with Rhoda Reinhold, the cutest independent on the campus.

Phi Mus Wednesday Niting at the shack: Arlene Robbins and another Phi Mu who looks like Millie Winters, but isn't.

Neuter

Wasn't it thoughtful of Mueller's to send the D. U. house a floral offering with said card enclosed, "To those lovely D. U. girls with the hope of a perfectly gorgeous year."

More Business.

It seems that the Showme office is swamped with subscriptions from Westpoint these days. Why shouldn't the cadets want to read about the national heart interest with the smoothest line that anyone was ever lucky enough to be strung on—why you all know her—Pat Martineau.

Fone

Even Paul Von Osdol, Phi Delt head man, was heard calling five different houses from the shack late Friday night for a cutie to amuse him. Better luck next time, Paul.

Pure Gossip

Mark Cox, Phi Gam, our all-around swell boy is hitting the steps again this year with Harriet Barton, red-haired Stephens dollie who looks the best of all of them.

Frank Schuske, Delt, is still luncheon dating Helen Mingle, D. G. The boy tried to put his pin on her after two dates.

Social climber Jacoby of the Kappa Sig house is trying his best these days to get the maroon Theta car.

Mary Jo Marshall, Kappa girl, should not be missing Tommy McHarg as long as she's with Jay Buckingham, the perfect looking new Phi Psi pledge.

Martha Biemdich, Tri Delt and Bob Hehl, Stewart roadster are Sunday niting it at the lodge.

A Toronto car stopped a crowd of college men and asked for the location of the Pi Phi annex. Chorus: "We don't know where it is but we sure know the telephone number."

The Phi Psis complain that by the time the Delta Gammas move into their new house their playground will be covered with snow.

If you feel like laughing get next to Bob Lindsley, sword and shielder who "Burns" it with the year's best stories.

Personal

The girls at 502 through the cooperation of your paragrapher hereby request that the Stewart Road Nebraska transfer please stay off the second floor.

Raison d'etre

And there's Elaine Parker, Kappa blondie whose clothes make Conley Avenue look like the Rue De La Paix.

Triangle—Geometry

Flo Wilson, cute Alpha Chi pledge from Joe Town, doesn't let a heart interest from said town keep her from running the campus crowd around in circles.

Winner

Jane Jones, Kappa, found it hard to persuade Bus Thompson, Sigma Nu, not to break a date with her the other eve, but ended up in getting him to keep it.

Information

It's surprising what a couple of feet of new tile flooring and a few cans of buff paint have done for Harris'. The university gang is moving in and they really have fun dancing to Johnny Rieck's peppy outfit.

If you haven't heard Herman Land do his solos on the trumpet you are missing a treat. Drop down and see for yourself—see where Columbia's best jelling is going on. Incidentally—Sunday dinner at Harris' candlelight room is the most romantic spot on the campus—the food's good too.

MISSOURI SHOWME

Rationale

Politics! Political issues! With so many political issues coming out way, via radio, movies, magazines, and platform speakers on the court house lawn, we had to break down and make our second number a political issue.

Campus politics, that mess on our own campus here that would dishearten Farley, Hamilton, Coughlin, Smith, Bradshaw, and all the rest of the masters, is so confused that we'll leave it to Gil Seidel to straighten it out—if it can be straightened.

The combined cess pools of the two distinguished cities at either end of this state cannot compare with the situation here in the heart of this (sovereign) commonwealth.

No matter whether you or your band may be in or out, read what the editor of the MISSOURI STUDENT has to say. (Showme was scheduled to go on sale at 9:30 a. m. today. Seidel arranged to be in the basement of his home in St. Louis by 9:20). His article is supposed to be a temporizer in all political matters and their ramifications.

Organization is the keystone of politics, and you should have seen the rally held recently when the Showme staff was organized.

O. O. McINTYRE
Godfather

HOWARD BRICKEY
Editor

MERRILL PANITT
Business Manager

EDITORIAL BOARD

ROBERT HANNON
Carl Winter *Chas. Callison*

EDITORIAL STAFF

EDMON OGLE*Feature Editor*
PHIL BRONSON*Feature Editor*

James Ragland
John McNutt
Dick Kanatzar
Walter Gelb
Margaret Servey

PORTER RANDALL*Theatre Editor*

Jack Beck
Dick Joho
George Palmer
Dick McCue

RAY PORTILLA*Humor Editor*

Wendel Mayfield
Josephine Synder
Doyle Innis

MARK COX*Sports Editor*

Tom O'Byrne
Charles Barker
Charles Underwood

CHANCE BOGGIANO*Art Editor*

GEORGE HAWKINS*Art Editor*

FRANKIE RICKSECKER*Showme Show*

JULIA KENNEY*Christian Editor*

DOROTHY MONTGOMERY*Stephens Editor*

BUSINESS STAFF

BOB HANNON*Advertising Mgr.*

Jane Arcularius
Joy Smith
Virginia Coulter
Jane James
Jane Bradford

GIL SEIDEL*Promotion Mgr.*

Maddie Breinig

CHARLES CALLISON*Circulation Mgr.*

Ira Kohn *Charles Barker*

JAMES WOODS*Exchange Mgr.*

Maddie Breinig

Rationale

Glance through the list of names on the new staff. Just lengthening the column in which to print the list wasn't enough—we had to expand the magazine to thirty-six pages.

If the campus responds to this issue as it did to the Beginners' number, we'll have to add more pages next time. The first number was a lot better than a hot cake, and sold much faster . . . the newsstand were cleared in six days.

We predict, with reason, that the record will be bettered this time. Here's why:

Have a look at what Porter Randall and his assistants turned out for this issue. Fresh, original stuff, new information.

Read Walter Gelb's treatise on freshmen orientation.

If you liked the picture layout last time, see the super-double-spread the political number carries.

Get a surprise out of Dick Kanatzar's, "My Madonna."

And a shock from James Ragland's offering.

That is what organization of the Showme staff has done. It has given you more than fifteen cents worth of magazine—and it is bound to improve with time.

THE EDITOR

NOTE: In the October 14 issue of the MISSOURI STUDENT, SHOWME'S editorial on Stephens College was quoted as "Charging Stephens authorities with adopting the wrong psychological stand." Showme's editorial charges the Stephens Administrative Council, and not the authorities. Showme says nothing at all about a "rule" going into effect—we merely quote a "request."

A

MORAL ISSUE



Last week a new request further restricting Stephens girl's association with men issued from the Administrative Council of Stephens College. This newest attempt to make super-women out of ordinary human beings forbids the girls to "jelly" during the afternoon and night without dates. In other words, girls who are going practically steady will continue to have dates and be able to sit down to a coke in one of our many "jelly joints." But what about the other eight hundred who aren't going steady! Will they remain cooped up—denied association with members of the opposite sex?

It might be well to hear what prominent psychologists have said about segregation of the sexes: Luella Cole, Ph.D., writes:

"All that most young people need is a chance for plenty of association with each other under conditions that prevent in so far as possible the dangers of too great intimacy."

Does the Administrative Council believe that a dance floor or booth offers "dangers of too great intimacy?" That seems to be stretching a point too far.

It does seem sad that, since the girls cannot go to classes with men, the council has asked them not to spend their recreation time with them. O. Pfister who has had much experience with the adolescent youth writes:

"When boys know only the company of other boys, and girls only that of other girls, healthy moral training becomes very difficult."

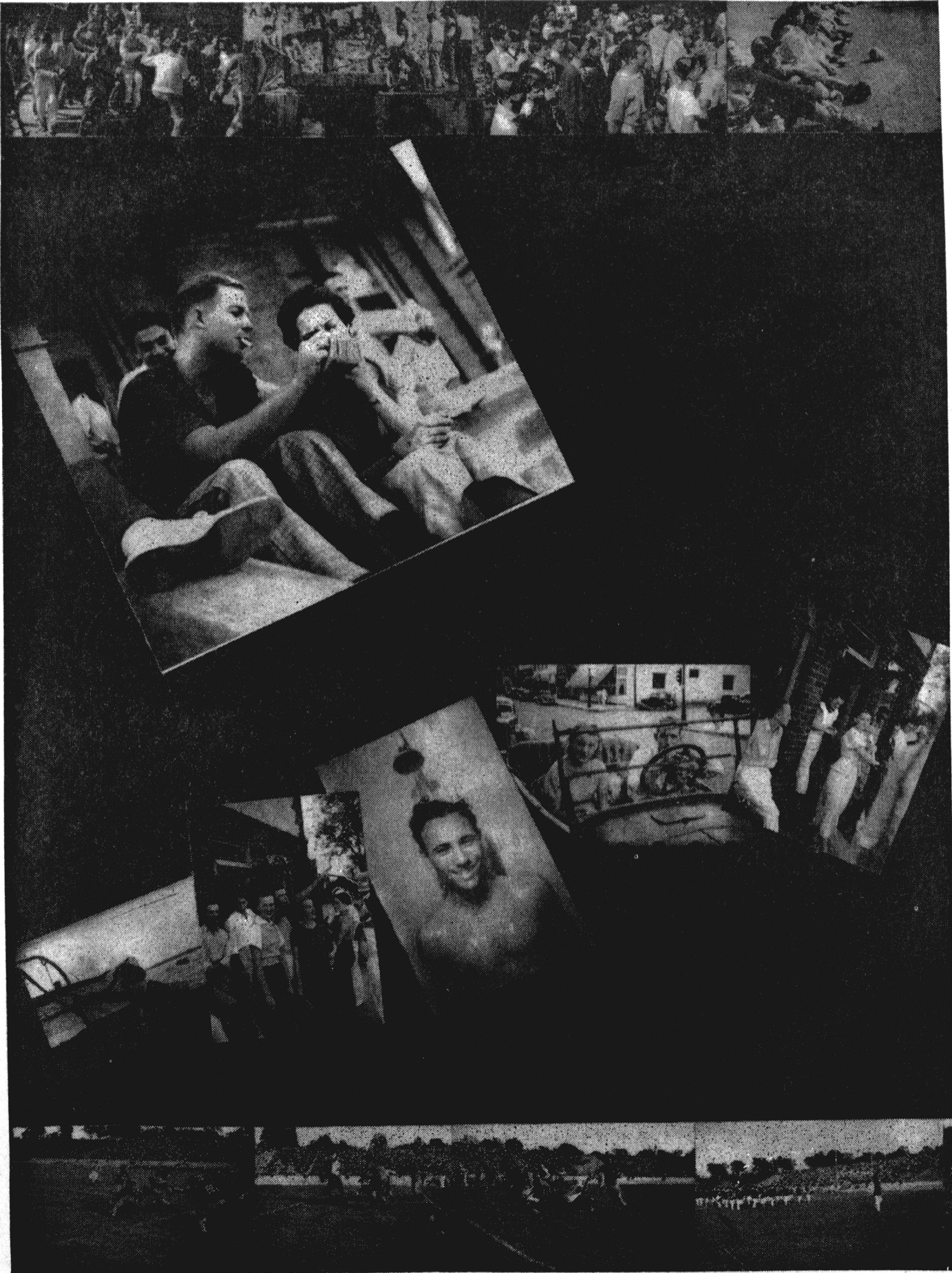
Does this not prove that the wrong psychological stand is being adopted at Stephens by interfering with normal contacts in requesting that the girls "stay away from men?"

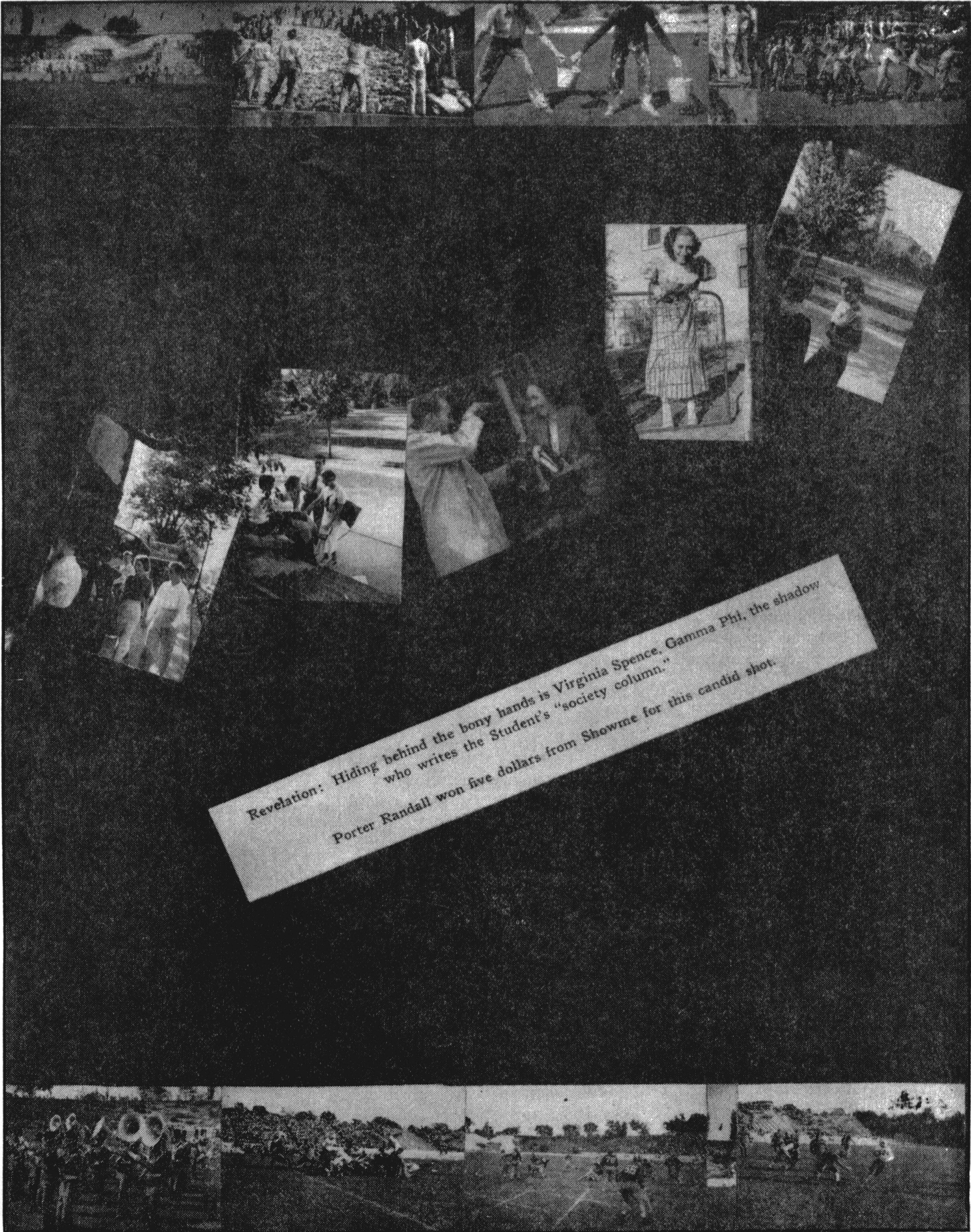
Their argument may be one against so-called "pick-ups." "Pick-ups" in a college town, where both parties are in Columbia for a common motive—education, can hardly be compared to illicit "pick-ups" in the big cities. How else here in Columbia, can men meet Stephens girls? Certainly not through "blind dates"—we shall not pause long enough to devote time to that stupid mos.

It might be that Stephens girls are taught that contact with men is not good for them. Leta S. Hollingsworth of Columbia University has this to say on that subject:

"In the case of the girl the attempt has typically been made to frighten her from intimate contact with members of the opposite sex by implying that men are dangerous, mysteriously charged with ruin, and filled with sinister intention. The tabu thus set up is effective in proportion to the intelligence and sensitivity of the girl, and 'protects' many not only until marriageable age, but for a life time from all possibilities of normal and spontaneous sex expression."

We feel that Stephens girls would benefit more if they were encouraged to meet university men rather than by being requested to stay away from the only places where they can possibly meet university men . . .





Revelation: Hiding behind the bony hands is Virginia Spence, Gamma Phi, the shadow who writes the Student's "society column."
Porter Randall won five dollars from Showme for this candid shot.

MY MADONNA

A short, tragic story of a deep, tender love, that was shattered because one person was careless

By DICK KANATZAR

Like many other men of the campus, I take time out now and then to drop in at Harris' or Gabe's just to see what's going on.

Of course, I enter with the hope that I might by chance meet up with something that is really smooth. For three years I have been doing this, but never are my hopes rewarded, that—not until—well, that's the story.

It is a few nights back, a little warm perhaps, but my blood tingles with the desire for a bit of romance. I am making the rounds of the jelly joints with a few of the boys. We stop at one of the better places to listen to its new band.

The orchestra sounds good as it beats away sweet rhythms, which encourages me to seek a girl with whom I might dance. But it is useless, for none of the representatives of the fairer sex look worthy of my puny attentions. So I return to my booth and listen to my companions tell terrible jokes.

I am keeping my eye anxiously on the door, waiting and hoping that something 'classy will come in. Suddenly, after I give up all hope, the door opens and in walk two girls. One of them isn't so good, but the other—Boy! my heart stops a beat. I look and stare at her.

She is a beauty, she is perfect—at least in my estimation. She has everything — class, poise, beauty, dress—brother, I'm telling you, love socks me on that first sight. I can hardly believe

that such a perfect creature exists.

The band is playing "Until the Real Thing Comes Along." Well, this is the real thing. She is my ideal—just what I have been waiting for all my life.

As the two girls walk down the aisle looking for a booth, they draw near the booth where I am sitting. This allows me closer scrutiny of my ideal. She appears even more beautiful the nearer she gets to me. Her soft brown hair falls in gentle waves over her lovely head. Her face is clear and white, radiating beauty from every angle. A pleasant smile plays upon her soft, tender red lips.

Her brown sport ensemble of expensive material fits tightly over feminine curves that would catch any man's eye. She walks down the aisle with graceful steps. Her chin is tilted slightly up, giving her a touch of arrogance and sophistication. Fellow, it's a fact, I know that this is the answer to my dreams. I am in love in a big way.

As she draws nearer me, our eyes meet and I look into eyes so beautiful that a poet couldn't describe them, so I won't try. When she breaks our lingering gaze, I scan her figure again. Her body is slim, yet with just enough curvature to set a man's pulse up a few beats—at least it does mine.

My gaze follows on down a shapely calf to her slim ankle. "My Gawd!" I say to myself as I turn my head in disgust. My

heaven crashes as I fall from my summit of delight into an abyss of despondency. Gawd, how terrible!

On her well-shod foot she wears an expensive sandal. That is all right, but in the front of the capless sandal protrudes a big toe through a hole in her sock.

▽▽▽▽

Professor Dunn: "In this scene, my dear, the young man rushes into the room, grabs you, binds you with rope from head to foot and then smothers you with kisses."

Alice Rhea: "Is the young man tall, dark and handsome?"

Dunn: "Yes. Why?"

Alice: "Then he won't need any rope."

—*Covered Wagon.*

"Were you copying his paper?"
"No, sir, I was only looking to see if he had mine right."

—*Harvard Lampoon.*

"Have some peanuts."

"Thanks."

"Wanna neck?"

"Gimme my peanuts back."

—*Texas Ranger.*

Garage Attendant (as car drives up): "Juice?"

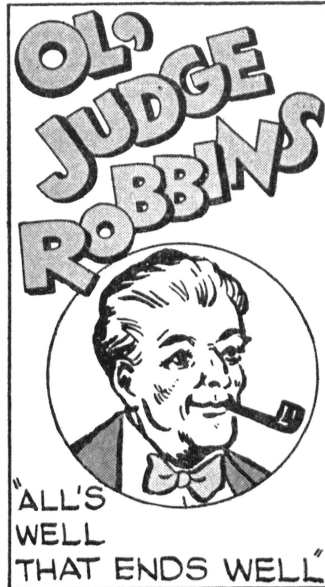
Car Occupants: "Vell, vot if we are—don't ve git no gas?"

—*Jester.*

Mother: Son, I don't want to see you going around with that wild girl any more.

Son: Aw, heck, maw, she ain't wild—Anybody can pet her.

—*Utah Humbug.*



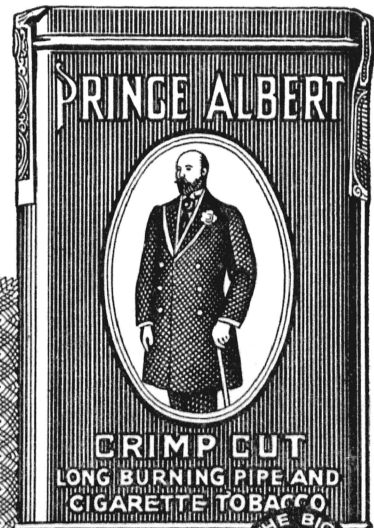
Copyright, 1936, R. J. Reynolds Tobacco Company



P.A. BRINGS YOU MILD, TASTY SMOKING

Right on the back of the Prince Albert tin it says: "Prince Albert is prepared under the process discovered in making experiments to produce the *most delightful and wholesome tobacco.*" We think you'll agree once you try Prince Albert

and discover the extra smoking joy it brings. Prince Albert is "crimp cut," with the "bite" removed, made of choice tobaccos. Make Prince Albert your tobacco! P.A. is swell "makin's" for roll-your-own cigarettes too.



PRINCE ALBERT GUARANTEES SATISFACTION

Smoke 20 fragrant pipefuls of Prince Albert. If you don't find it the mellowest, tastiest pipe tobacco you ever smoked, return the pocket tin with the rest of the tobacco in it to us at any time within a month from this date, and we will refund full purchase price, plus postage. (Signed) R. J. Reynolds Tobacco Co., Winston-Salem, N. C.

PRINCE ALBERT THE NATIONAL JOY SMOKE



50 pipefuls of fragrant tobacco in every 2-oz. tin of Prince Albert

POLITICS

A genius political commentator gives an interesting survey of the entire campus mess, detailing exactly what everybody's chances are of gaining anything.

By GIL SEIDEL

To those readers of the Showme who don't know anything about student politics,—don't read this. It probably wouldn't interest you because your only connection with the "whole dirty mess" (those are your quotes not mine) is the annual visit to the polls that you make when your fraternity or sorority political genius tells you to go or get socked with a five buck fine or, if you're not in one of the glorified eating shacks, when old Joe Slunks, the son of the banker back home, suddenly discovers that you've been here in school all the time and becomes very cordial to you (which of course has no connection with the fact that Joe's frat brother is running for the Student Assembly next week and that Joe casually mentions that if you vote for Brother Blumph you'll sure be a swell fellow and maybe he can wangle you a bid to the next party over the house. Well, don't believe him).

The Chumps Vote

So like the sap you are, you vote as you're told and Brother Blumph parks his fanny in the assembly where he is merely another stooge to the party boss. Blumph is a good kid and would like to do a good job, but he hasn't the faintest idea of what the meeting is all about and thus can only vote if given the proper cue.

But then you ask, what the hell about it? What can the politicians do? Well, I told you not to read this because I knew you'd

be asking those kind of questions. Actually he can do very little.

There are only five paying jobs in the school which can be thrown one way or another by politics. They are (in order of pay received): Student President, Savitar Editor, Savitar Business Manager, Missouri Student Editor, and Clerk of the Student Assembly. They get from \$100 to \$300 per year. In addition the politicians can throw all kinds of non-paying tidbits much more than grief, but it looks good in the Savitar under your picture and the home town paper will carry a story about it and maybe a picture of you and your folks will bust with pride over your election to the chairmanship of the grass-planting committee of the S.G.A. at the State U.

The Greeks Have a Hand

Then too, the Greeks have to have activities to slip into their annual lies to their national chapters whereby they point with pride to the outstanding position good old Missouri chapter of the good old frat holds on the campus. Why, we have men in the best activities on the campus and we cut a mean and fancy figure in the swirl around here, they can brag to their bored national secretaries who get the same line from every chapter.

It's easy to see why a fraternity would want the offices. Are not they mutual admiration societies that take in only people exactly like those already in and don't they type their boys so that

you can spot a Sig Alph a mile off by his loud socks sticking out of his knee pants or a Beta by his haircut? They have to have something to veneer their pride.

But why independents want the jobs is more than I can answer. Ask the Missourian question and answer department.

But what's the present set-up as regards politics? I was afraid you'd ask that. Briefly, it's a secret. Not only from the general public, but from the politicians. At present the Student Assembly is being run by a coalition of fraternities, sororities, and some independents. The Greeks were all members of the old Unionist Independent party until last spring when, according to them, a particularly dirty bit of double-cross was pulled on a deserving boy and they quit the Unionists cold. They didn't have a very large group so they merged with Paul Niedner and his group of independents in the assembly to form a majority.

Flanigan Heads Minority

That left the remnants of the Unionists party (still the strongest as regards the fraternities) in the minority in the assembly under the tutelage of Dave Flanigan. It also left quite a few houses which had previously belonged to the old Big Caucus and which were left out in the cold at the last elections by the demise of that organization still out in the cold since they have no assembly members.

(Continued on Page 20)

INQUISITION

When a Mr. Milquetoast character is mixed with a dash of the Don Juan complex, final results can't be guessed

BY JAMES RAGLAND

I don't know why I got myself on that damned committee, but I was on it and there wasn't anything I could do about it. So there I was waiting in the lingerie department for a clerk in one of the larger department store.

An old skinny schoolmarm with low shoes, black dress, straight up and down, approached. Her face had just the right seriousness to give me nonchalance.

I asked if she would take care of me. She eyed me and said, "Sorry, I'm going to lunch. I'll get someone for you." I knew exactly what kind of a person she would get. Sure enough, she was coming toward me.

"Can I help you?"

"Er... yes. Ah...ha. Look, I'm a college man..."

"Uh huh."

"You know... fraternities, rah rah?"

Gad, it looked like the end. "See, I'm a college man and I'm on a committee. It's kinda funny, but gosh..."

"Uh huh."

"Look, lady, don't act so interested. I mean, oh heck..."

"Uh huh."

"What's the latest kind of brassieres and panties... I mean. Look, I mean..." I was looking down at the floor when my foot went through the bottom of the glass counter.

The floor walker approached. "My dear sir!"

I wanted to bolt. "I'm sorry." I stooped down and tried to pick up the largest pieces of glass. The floorwalker fixed it up. He called a porter.

I stepped away from the damage and met up with the same sweet sales girl. "I'm sorry." I don't know why I said that. My face was so red I could feel the heat down to my shoulders.

"Oh, that's all right."

I wanted to run away, but couldn't do that; gosh, I'd busted their case.

"We're going to have a follies show. You know, dancing and stripping..."

"Uh huh."

"Please don't say 'uh huh'."

"But I understand."

"That's fine. Now look, we're going to put on..." Gad, I could have fallen in love with the little girl. She seemed so interested. "Do you understand?"

Uh huh."

I decided to say something she couldn't say "uh huh" to.

I said, "Where are you going tonight?"

"You wanted some information about feminine underthings?"

"Er, yes. You see, my fraternity's gonna give a show and I'm the committee to discover just what the boys should wear when they do their stripping act. Don't you see? It's going to be a male follies, kinda. I mean we're going to be dressed like wom—I mean, girls."

"Uh huh."

"So we've got to know just what we should be wearing when we come on the stage. You understand what I mean, don't you?"

"Uh huh."

"Please don't say 'uh huh'."

"But I understand perfectly just what you want to do."

"Well then give me the name and style of the certain things we should wear so that I'll be able to report and come back and buy the right sizes in the things."

"My dear boy, it's a long and tedious story. I—"

"Listen, babe, how about coming with me tonight and telling me all about it?"

"I—I could send you all the information in a—"

"No, look, kid, you've gotten my attention; maybe you'd come to the meeting tonight and explain the situation to the boys?"

"Uh huh, but I know that I wouldn't be allowed in your midst; I'm a sorority girl, and I know the ins and outs."

"Yeah, but on a delicate subject like this you'd be welcomed."

"Uh huh, now will you explain what you want, sir?"

"I want a date, babe. No! Excuse me. I want some information."

My shoulders could feel the heat again.

"Uh huh."

"Sure, I know—er no, I mean I want—"

"Uh huh!"

I turned and ran.

▽ ▽ ▽ ▽ ▽

Socialist Father: What do you mean by playing truant? What makes you stay away from school?

Son: Class hatred, father.

—Annapolis Log.

FRATERNITY AND SORORITY PLEDGE DATE LIST

Here they are at a dime a dozen • • • •

FRATERNITIES

| ACACIA | | | | | | |
|------------------|-------------------|--------|--------|-------------|-------|---------------------|
| Name of Pledge | Home Town | Height | Weight | Hair | Eyes | Description |
| William Anderson | Kansas City | 5- 8 | 150 | Blond | Blue | Quiet |
| Chas. Stevenson | Cnmbridge, N. Y. | 5- 8 | 155 | Dark Brown | Brown | Easterner |
| Reed Schmidt | St. Louis | 5- 9 | 165 | Brown | Grey | Breezy |
| Joe Peck | Tooele, Utah | 6- 1 | 190 | Light Brown | Blue | Genial |
| Harry Smith | Needles, Calif. | 6- 0 | 147 | Light Brown | Blue | Innocent Bystander |
| Howard Oeder | Stanhope, N. J. | 6- 0 | 170 | Brown | Brown | Plenty OK |
| Roland Lanser | St. Louis | 5- 6 | 125 | Brown | Blue | Quiet |
| Bob Engleman | Mendon | 5- 8 | 135 | Black | Brown | Studious |
| Allan Engleman | Mendon | 5- 8 | 145 | Dark Brown | Brown | Everywhere |
| Bob McMillan | Maplewood | 5- 8 | 140 | Dark Brown | Brown | Unassuming |
| Lloyd Talmadge | Coombs, Tex. | 5- 7 | 135 | Black | | Preponderous |
| Ted Fitzwater | Union | 5- 7 | 135 | Brown | | Artistic |
| Tom Adkins | Drumwright, Okla. | 6- 0 | 165 | Blond | Blue | Good-looking |
| Byron Jackson | Mendon | 6- 1 | 185 | Light Brown | Blue | Woman-hater |
| Conrade Pralle | St. Louis | 5- 6 | 128 | Blond | Blue | Quiziral |
| John Warmer | Marceline | 5-10 | 145 | Dark Brown | Green | Punaters Understudy |
| John White | Matthews | 6- 2 | 165 | Light Brown | Brown | Smiling |
| Scott McLean | University City | 5- 8 | 135 | Dark Brown | Brown | Smooth |
| Ted Betz | Chicago, Ill. | 5- 6 | 130 | Blond | Blue | Shy |
| Fred Howard | Columbia | 5-11 | 130 | Blond | Blue | Home-towner |

| ALPHA SIGMA PHI | | | | | | |
|------------------|---------------|--------|--------|--------|-------|-------------|
| Name | Home Town | Height | Weight | Hair | Eyes | Description |
| Ray Bezoni | Chamois | 5- 7 | 135 | Brown | Grey | Genial |
| Harold Bierman | St. Louis | 6- 0 | 150 | Brown | Blue | Dapper |
| Charles Crump | Columbia | 6- 1/2 | 170 | Brown | Brown | Romantic |
| Wm. DeJarnette | Kansas City | 5-11 | 139 | Brown | Blue | Clever |
| Donald Doll | Kansas City | 5-10 | 140 | Blonde | Grey | Friendly |
| Gregg Dunn | St. Louis | 5-10 | 152 | Brown | Grey | Duchin |
| Merle Helmkamp | St. Louis | 6- 0 | 145 | Brown | Grey | Sincere |
| Howard Maiwurm | Maywood, Ill. | 6- 0 | 150 | Brown | Grey | Handsome |
| Ray Moss | Hallsville | 6- 1 | 198 | Bruwn | Brown | Athletic |
| Willard Rand | Kansas City | 5-10 | 145 | Brown | Grey | Practical |
| Robert St. John | St. Louis | 5-11 | 171 | Brown | Blue | Don Juan |
| Roy Schuette | St. Louis | 6- 0 | 150 | Black | Brown | Smoothy |
| Gilbert Schenkel | St. Louis | 5- 9 | 150 | Brown | Grey | Persistent |
| Robert Snell | St. Louis | 5-10 | 152 | Brown | Grey | Impressible |

| ALPHA TAU OMEGA | | | | | | |
|-----------------|--------------------|--------|--------|-------|-------|-------------|
| Name of Pledge | Home Town | Height | Weight | Hair | Eyes | Description |
| Lee Wilder | Riverside, Calif. | 5- 9 | 140 | Blond | Brown | Collar-ad |
| Jim Eaton | Nevada | 5-11 | 155 | Black | Dark | Demure |
| Jerry Graves | Neosho | 6-1 | 158 | Brown | Dark | Epicurean |
| Howard Pease | Wilson, N. Y. | 6- 2 | 170 | Blond | Blue | Cynical |
| Glen Ramsy | Tulsa, Okla. | 5- 9 | 150 | Brown | Blue | Lover |
| Bill Bowers | Long Beach, Calif. | 5-11 | 145 | Brown | Light | Horseman |
| Herb Gore | El Paso, Tex. | 5- 9 | 150 | Brown | Brown | Singer |
| Harry Bridges | St. Louis | 6- 1 | 180 | Black | Black | Brawny |
| Guy Byrd | Poplar Bluff | 5-10 | 155 | Brown | Dark | Restful |
| Nile Withers | Clinton | 5- 8 | 140 | Brown | Brown | Shy |
| Norman Powell | St. Louis | 6- 0 | 160 | Blond | Brown | Smooth |
| Harry Naeter | Cape Girardeau | 5- 9 | 170 | Blond | Blue | Lucky |

| BETA THETA PI | | | | | | |
|---------------------|----------------------|--------|------------|-------|--------|----------------|
| Name of Pledge | Home Town | Height | Weight | Hair | Eyes | Description |
| Dick Aiken | Marshall | 6- 1 | 165 | Blond | Brown | Gentleman |
| Harrison Baier | St. Joseph | 5- 8 | 145 | Blond | Blue | Versatile |
| Springfield Baldwin | Kansas City | 5- 9 | 135 | Blond | Blue | Contagious |
| Walter Bohling | Jefferson City | 5-10 | 165 | Black | Brown | Rustic |
| Livingston Collins | Kansas City | 5- 9 | 155 | Brown | Brown | Garrulous |
| Frank Cortelyou | Kansas City | 5-10 | 130 | Bald | Glassy | Young |
| Dick Craig | Joplin | 5- 9 | 145 | Brown | Brown | Cute |
| John Crichton | Ft. Morgan, Colo. | 6- 4 | 185 | Black | Blue | Bombastic |
| Sam Darrough | Kansas City | 6- 2 | 160 | Black | Brown | Gentleman |
| Dick Duncan | Joe Town | 6- 1 | 185 | Blond | Brown | Potentialities |
| Martin Eckhart | Joplin | 6- 2 | Tremendous | Dark | Blue | Athlete |
| Bill Finke | Joplin | 6- 0 | 160 | Brown | Blue | Tiny |
| Fraser Fleming | Kansas City | 6- 2 | 165 | Brown | Brown | Collich |
| George Goll | Kansas City | 6- 3 | 180 | Brown | Brown | Lofty |
| Lawrence Kirk | Joe Town | 5-11 | 160 | Red | Brown | Slick |
| Don Klein | Kansas City | 5-11 | 175 | Dusty | Brown | Personable |
| Bruce McCulloch | New York City, N. Y. | 6- 1 | 185 | Dark | Brown | Vociferous |
| Graham Porter | St. Joseph | 5- 8 | 155 | Curly | Blue | Stolid |
| J. D. Rankin | Tarkio | 6- 0 | 190 | Slick | Dark | Active |
| John Slayton | Joe Town | 5-11 | 155 | Black | Dark | Squire |
| Sam Walton | Columbia | 5-11 | 160 | Black | Nice | Reserved |
| Charles Wilcox | St. Joseph | 6- 1 | 160 | Black | Black | Swell |
| | | | | | | Bright |

DELTA TAU DELTA

| Name of Pledge | Home Town | Height | Weight | Hair | Eyes | Description |
|-----------------|-------------------|--------|--------|-------|-------|-----------------------|
| Jimmie Alford | Columbia | 5- 6 | 150 | Brown | Grey | Little Man--Big Stuff |
| Steve Bonney | La Grange | 5- 9 | 140 | Black | Blue | Two Schools of Tho't |
| Dale Bowling | St. Joseph | 5- 7 | 180 | Black | Blue | Girls are so Nice |
| Dick Agee | Independence | 5- 6 | 185 | Black | Grey | 'Cabs' Competition |
| Frank Kiefer | St. Joseph | 6- 0 | 175 | Brown | Blue | Adonis |
| A. L. Jones | St. Joseph | 5- 6 | 135 | Blond | Blue | Mighty Atom |
| Wilbur Lake | La Grange | 6- 2 | 140 | Black | Black | String-bean |
| Chuck Godsey | Scottsbluff, Neb. | 5- 8 | 155 | Brown | Blue | Extra Smoothie |
| Jake Spaulding | Chicago, Ill. | 5-10 | 135 | Black | Black | Linguist |
| Art Spangburg | St. Joseph | 6- 5 | 215 | Black | Grey | Little Fellar |
| Fred Stockdale | Independence | 5- 7 | 140 | Red | Green | Persistent |
| Ray Snyder | St. Joseph | 6- 0 | 179 | Brown | Blue | Golf Course Athlete |
| Ted Schweitzer | Hannibal | 5-10 | 187 | Brown | Blue | Dixie Denizen |
| Franklin Russel | St. Joseph | 5- 9 | 155 | Blond | Blue | Kat Chaser |
| Bill Quinn | Maywood | 5- 5 | 130 | Brown | Green | Politician |

DELTA UPSILON

| Name of Pledge | Home Town | Height | Weight | Hair | Eyes | Description |
|-----------------|----------------------|--------|--------|-------|-------------|-----------------------|
| Jean Berg | Kansas City | 5-11 | 160 | Brown | Brown | Pleasant |
| Robert Brandle | University City | 5- 7 | 140 | Brown | Brown | Laddie Boy |
| Dick Flanery | Poplar Bluff | 5-11 | 170 | Black | Blue | Killer |
| Paul Grant | Cabool | 5- 8 | 140 | Brown | Brown | Ladies' Man |
| Don Harris | Joplin | 5- 7 | 138 | Brown | Gray | Subtle |
| G. G. Lautz | Carthage | 5- 9 | 150 | Brown | Green | Has Wheels |
| Obie O'Byrne | New York City, N. Y. | 6- 1 | 200 | Black | "Dark Eyes" | Black Beauty |
| Philpott | St. Louis | 5-11 | 185 | Brown | Blue | Lover Boy |
| Carl Geyer | St. Louis | 6- 0 | 165 | Brown | Blue | Girl Crazy |
| Tummy Austin | Willow Springs | 5- 8 | 145 | Brown | Blue | Interesting |
| Max Mills | St. Louis | 5- 9 | 140 | Brown | Brown | Suave (smooth to you) |
| Ken McLaughlin | Wheaton, Ill. | 5- 9 | 155 | Brown | Blue | Rugged |
| Howard Birchard | Cabool | 6- 2 | 160 | Blond | Blue | Studious |

FARM HOUSE

| Name of Pledge | Home Town | Height | Weight | Hair | Eyes | Description |
|--------------------|----------------------|--------|--------|-------|-------|----------------|
| Noland Armstrong | Odessa | 6- 1 | --- | Brown | Brown | Romeo |
| Elza Barbee | Platte City | 5-10 | --- | Brown | Brown | Knock-Knock |
| Ernest Briakmeier | Hannibal | 5-10 | --- | Red | Blue | Chubby |
| Jimmie Crain | East St. Louis, Ill. | 5- 9 | --- | Black | Black | Suave |
| Fritz Herndon | Linn | 5- 8 | --- | Sandy | Blue | Romance |
| Wiltner Jacob | De Soto | 5- 8 | --- | Sandy | Blue | Pisciculturist |
| Bob Lengain | Sedalia | 6- 0 | --- | Red | Blue | Demure |
| Frank Longworth | Butler | 5- 7 | --- | Brown | Blue | Bucolic |
| LeRoy Meinershagan | Higginsville | 5-10 | --- | Blond | Blue | All's Well |
| Harold Pontices | Bethany | 5- 8 | --- | Blond | Blue | Putt-Putt |
| Jack Lanner | Ridgeway | 5- 9 | --- | Brown | Brown | Discreet |
| Harlow Speckhart | Payson, Ill. | 5-11 | --- | Brown | Brown | Indolent |
| Zell Thompson | Maryville | 5- 8 | --- | Blond | Blue | Tid-Bit |
| Ben Willhoyte | Maryville | 5- 6 | --- | Black | Brown | Grandiloquence |
| Gerald Wright | Tuscumbia | 6- 0 | --- | Black | Brown | Elongate |
| Henry Zimmerman | Maryville | 5- 8 | --- | Brown | Brown | Goo-Goo |
| Clifford Bailey | Maryville | 5- 9 | --- | Red | Blue | Foamy |

KAPPA SIGMA

| Name of Pledge | Home Town | Height | Weight | Hair | Eyes | Description |
|------------------|-------------------|--------|--------|-------|-------|--------------------|
| Bud Barnes | University City | 5-11 | 150 | Brown | Brown | Oldfieldish |
| Marshall Coffman | Marshall | 5-10 | 140 | Brown | Brown | Seedy |
| Frank Erskine | University City | 5- 5 | 125 | Black | Black | Twerpish |
| John Esping | St. Joseph | 5-11 | 175 | Black | Blue | Patent Leather |
| Bill Farris | St. Louis | 5-10 | 155 | Sandy | Green | Old Cow Hand |
| Frank Gerow | Mt. Vernon, N. Y. | 5-11 | 155 | Blond | Blue | "Me and Skid" |
| Bill Hawkins | Clayton | 5-11 | 175 | Brown | Green | Aesthetic |
| Jack Kyte | Kansas City | 6- 4 | 190 | Brown | Green | Tired Frankenstein |
| Walter Levvis | Kansas City | 5- 8 | 135 | Brown | Brown | Inconspicuous |
| Bob Mehl | Columbia | 6- 1 | 155 | Red | Blue | Parlor Orator |
| Evan McLean | Knoxville, Tenn. | 6- 1 | 170 | Sandy | Green | Vague |
| Rex Nielson | Kansas City | 5- 8 | 145 | Brown | Brown | Swedish |
| Bob Orf | Maplewood | 6- 0 | 165 | Blond | Blue | Mop Top I |
| Bud Orf | Maplewood | 6- 0 | 165 | Blond | Blue | Mop Top II |
| Joe Rood | St. Louis | 5- 7 | 140 | Blond | Blue | Sexy |
| Roger Sermon | Independence | 5-10 | 140 | Blond | Blue | Oo-la-la |
| Harland Soule | Independence | 5- 8 | 130 | Sandy | Green | Pestiferous |
| Tommy Hughes | Parsons, Kan. | 5- 8 | 140 | Black | Black | Jazzy |
| Vernon Nolte | St. Louis | 5- 8 | 140 | Blond | Blue | Virtuoso |

LAMBDA CHI ALPHA

| Name of Pledge | Home Town | Height | Weight | Hair | Eyes | Description |
|-----------------------|------------------|--------|--------|--------|----------------|-------------|
| Gene Bohannon | Columbia | 5-11 | 150 | Red | Brown | Reckless |
| Allen Brunk | Columbia | 5- 8 | 145 | Brown | Hazel | Speed |
| Philip Jose Farmer | Peoria, Ill. | 5-11 | 170 | Black | Greenish Brown | Woof |
| Kenneth W. Hutchinson | Mount Ayr, Iowa | 5- 8 | 140 | Black | Brown | Sunbeam |
| James Ormsby Speer | Knoxville, Tenn. | 6- 0 | 142 | Blonde | Baby Blue | Ducky |
| George Carter | Columbia | 5- 5 | 155 | Black | Brown | Potty |

PHI KAPPA PSI

| Name of Pledge | Home Town | Height | Weight | Hair | Eyes | Description |
|------------------|--------------------|--------|--------|----------|-------|----------------------|
| Joe South | Birmingham, Ala. | 6-0 | 160 | Brown | Brown | Southern Gentleman |
| Bob Willits | Kansas City | 5-10 | 155 | Blond | Gray | Playboy |
| John Allen | Pasadena, Calif. | 6-1 | 160 | Black | Brown | Spanish Caballero |
| Henry Cook | Terre Haute, Ind. | 6-1 | 185 | Blond | Gray | Schoolgirl's Delight |
| Charles Witte | Kirkwood | 6-0 | 170 | Brunette | Brown | Serious |
| J. Buckingham | Kansas City | 6-2 | 190 | Blond | Blue | Debonair |
| Bob Creel | Kansas City | 5-9 | 140 | Blond | Brown | Quiet |
| John Motlow | Long Beach, Calif. | 6-0 | 155 | Brunette | Brown | Reserved |
| Ernest Conrad | Kansas City | 5-10 | 150 | Brown | Brown | Noisy |
| Fred Macker | Kansas City | 5-11 | 155 | Brunette | Brown | Comical |
| Bill Bates | Kansas City | 5-9 | 150 | Dark | Blue | Cocky |
| Dale Rogers | Houston, Tex. | 6-0 | 160 | Dark | Blue | Untamed Texan |
| Gardiner Lathrop | Kansas City | 6-0 | 175 | Dark | Brown | He-man |
| Jerry Roddy | St. Louis | 6-0 | 150 | Brown | Gray | Flighty |
| Pete Welch | St. Louis | 5-8 | 135 | Brown | Brown | Joe E. Brown |
| Wilmer Warren | Kansas City | 5-11 | 170 | Brown | Blue | Wily |

PHI SIGMA DELTA

| Name of Pledge | Home Town | Height | Weight | Hair | Eyes | Description |
|----------------|-------------------|--------|--------|-------|-------|-------------|
| Harold Brody | Kansas City | 5-9 | 160 | Brown | Brown | Brute |
| Isador Brody | Kansas City | 5-9 | 145 | Brown | Blue | Handsome |
| Isador Epstein | Brooklyn, N. Y. | 5-11 | 155 | Brown | Brown | Palooka |
| Isador Farber | St. Joseph | 5-7 | 140 | Black | Grey | Wise |
| Walter Gelb | Hartford, Conn. | 5-11 | 140 | Brown | Brown | Uh-huh |
| Bert Herske | Mt. Vernon, N. Y. | 5-10 | 140 | Blond | Grey | Freshman |
| Bill Harvey | Brooklyn, N. Y. | 6-0 | 180 | Black | Brown | Momentous |
| Arthur Hirsch | Kansas City | 5-10 | 165 | Blond | Brown | Refined |
| Morris Ruben | Brooklyn, N. Y. | 6-1 | 195 | Brown | Blue | Huge |
| Alex Silverman | Kansas City | 5-6 | 160 | Black | Brown | Gable |
| Irving Sklar | St. Louis | 5-6 | 140 | Black | Brown | Alive |

PI KAPPA ALPHA

| Name of Pledge | Home Town | Height | Weight | Hair | Eyes | Description |
|-----------------|------------------|--------|--------|-------|-------|-------------|
| Addison Taylor | University City | 6-0 | 235 | Brown | Brown | Ducky |
| Joe Browning | Senath | 5-11 | 155 | Brown | Blue | Smooth |
| Sam McAnnally | Kennett | 6-3 | 175 | Brown | Brown | Built |
| Bert Whittson | Clayton | 5-8 | 140 | Brown | Blue | Cute |
| Sam Fischer | Kennett | 6-0 | 190 | Red | Blue | Cute |
| Edward Scruggs | Harrisonville | 5-9 | 140 | Brown | Brown | Handsome |
| L. A. Pickard | Kennett | 5-11 | 141 | Brown | Blue | Business |
| Charles Cowden | Nashville, Tenn. | 5-8 | 143 | Brown | Brown | Silent |
| Victor Cary | Alexandria, Va. | 5-11 | 140 | Brown | Brown | Gable |
| Wilson Phillips | New Madrid | 5-6 | 132 | Brown | Brown | Static |
| John Crosby | Joplin | 5-8 | 142 | Brown | Brown | Darling |

SIGMA ALPHA EPSILON

| Name of Pledge | Home Town | Height | Weight | Hair | Eyes | Description |
|------------------|-----------------------|--------|--------|-------------|------------|------------------|
| Johnny Thompson | Kansas City | 5-8 | 140 | Brown | Blue | Straightforward |
| Albert Waters | Kansas City | 5-11 | 155 | Chestnut | Blue | Extrovert |
| Jack Fray | Kansas City | 5-10 | 145 | Blonde | Azure | Veddy nice |
| George Brown | Ft. Leavenworth, Kan. | 6-0 | 160 | Bay | Brown | Polo Joe |
| Curtis Bogasch | St. Louis | 6-0 | 205 | Wavy | Black | Good bet |
| Dick Wessell | St. Louis | 5-11 | 172 | Brown | Trusting | Typical Sig-Alph |
| Bud Danforth | St. Louis | 5-8 | 138 | Light Brown | Blood-shot | Abstainer |
| Frank Heidel | St. Louis | 6-3 | 208 | Curly | Russet | Muscular-lover |
| Henry Busheyhead | St. Louis | 6-0 | 162 | Oily | Open | W. C. T. U. |
| Harry Mason | St. Louis | 5-11 | 177 | Light | Blue | Clean-cut |
| Clyde Nelson | St. Louis | 6-1 | 190 | Black | Brown | Easy for blondes |
| Miller Collings | Detroit, Mich. | 5-8 | 137 | Glossy | Brown | Intellectual |
| Ed James | Rockford, Ill. | 6-0 | 170 | Brown | Twinkling | Tom Roverish |
| Bob Waldor | Chicago, Ill. | 5-10 | 188 | Dusky | Blue | Casanova-like |
| Milt Moran | Alliance, Neb. | 5-8 | 142 | Curly | Grey | Hard to get |
| Hoyt Luthly | Richland, Iowa | Little | --- | Short | Starry | Domineering |
| Bill Macklin | Litchfield, Minn. | 5-8 | 155 | Falling | Amber | Barnum was right |
| Jack Little | Clarksburg, Neb. | 6-0 | 189 | Kinky | Glassy | Swing-time |
| Evans S. Carroll | Palm Beach, Fla. | 5-11 | 170 | Long | Candid | Suave |

SIGMA ALPHA MU

| Name of Pledge | Home Town | Height | Weight | Hair | Eyes | Description |
|-----------------|----------------------|--------|--------|--------|-------|-------------|
| Al Goldman | New York City, N. Y. | 5-9 | 150 | Blonde | Blue | A "Natural" |
| Les Epstein | St. Louis | 5-7 | 130 | Brown | Brown | Sagacious |
| Al Werber | St. Louis | 6-0 | 210 | Brown | Gray | Buster |
| Al Clemage | Kansas City | 6-0 | 140 | Black | Brown | Fast |
| Elmer Price | St. Louis | 6-1 | 140 | Brown | Brown | Obliging |
| Bruce Fink | Kansas City | 5-8 | 145 | Brown | Blue | Athletic |
| Harvey Coppel | New York City, N. Y. | 5-8 | 145 | Brown | Blue | Broadway |
| Marty Polin | New York City, N. Y. | 5-7 | 130 | Brown | Blue | Congenial |
| Bob Eisenberg | New York City, N. Y. | 5-8 | 155 | Brown | Blue | Vigor |
| Sid Schreiber | St. Louis | 5-10 | 160 | Brown | Blue | Lochinvar |
| Mel De Hovitz | Flat River | 6-0 | 140 | Black | Brown | Slim |
| Charlie Sher | St. Louis | 5-7 | 135 | Black | Brown | Happy |
| Julie Sher | St. Louis | 5-9 | 135 | Brown | Brown | Modest |
| George Arnstein | New York City, N. Y. | 5-9 | 150 | Blonde | Blue | Click |
| Hal Nemetz | New York City, N. Y. | 5-11 | 185 | Black | Blue | Cossack |
| Harry Feinberg | Kansas City | 5-8 | 135 | Black | Brown | Okay |
| Irv Panken | New York City, N. Y. | 5-8 | 140 | Black | Brown | 42nd Street |
| Abe Tepper | Webster Groves | 5-9 | 165 | Brown | Brown | Sporty |
| Cy Toder | St. Louis | 5-8 | 140 | Blonde | Blue | Snappy |

SIGMA CHI

| Name of Pledge | Home Town | Height | Weight | Hair | Eyes | Description |
|------------------|----------------------|--------------------|--------|-------|-------|----------------|
| Forrest McCluney | Jefferson City | 6- 3 | 175 | Blond | Gray | Intellectualia |
| Leo J. Rozier | Perryville | 5-10 | 145 | Black | Gray | Dreamer |
| Allen Hosmer | Kansas City | 6- 1 | 147 | Red | Gray | Clown |
| Ted Mansur | Jefferson City | 6- 0 | 150 | Brown | Brown | Quiet |
| Augie Elbring | Clayton | 6- 0 | 175 | Blond | Brown | Virile |
| Jim Bauer | St. Louis | 5- 6 | 130 | Black | Green | Reticent |
| Eddie Neal | Kansas City | 5- 7 | 145 | Blond | Blue | Apollo |
| Ralph Alderson | St. Louis | 5- 8 | 136 | Brown | Gray | Petite |
| Robert Evans | Joplin | 6- 0 | 168 | Brown | Brown | Sandeau |
| Richard Sheehy | East St. Louis, Ill. | 5- 7 | 150 | Black | Blue | Exotic |
| Charles McClure | University City | 6- 3 | 184 | Brown | Slate | Individualist |
| Al Williams | Kansas City | 5- 8 $\frac{3}{4}$ | 140 | Brown | Brown | Don Juan |
| John King | Dallas, Tex. | 5- 7 $\frac{1}{2}$ | 135 | Sandy | Blue | Suave |
| Bill Royster | Kansas City | 5-11 | 140 | Brown | Brown | Astaire? |
| Gregg Bartels | St. Mary's | 6- 0 | 175 | Brown | Blue | Lanky |
| Joe French | Columbia | 6- 1 | 150 | Brown | Brown | Dark Hazard |
| Les Green | Columbia | 5-10 | 145 | Blond | Gray | Perfect |
| Jack Nowell | Columbia | 6- 3 | 190 | Blond | Blue | Big Man |

SIGMA NU

| Name of Pledge | Home Town | Height | Weight | Hair | Eyes | Description |
|------------------|----------------------|--------------------|--------|------------|-------|----------------------|
| Jim Arnold | Kansas City | 6- 2 | 160 | Brown | Blue | |
| Charles Barker | Fairplay | 5-10 $\frac{1}{2}$ | 145 | Brown | Brown | A Car Helps |
| Gene Bredehoft | Kansas City | 5-11 $\frac{1}{2}$ | 170 | Blonde | Blue | Naive |
| Fred Coppock | Logansport, Ind. | 5-10 $\frac{1}{2}$ | 168 | Brown | Brown | All-Star |
| J. H. Cordes | Trenton | 5-10 | 160 | Blonde | Blue | Hoosier Schoolboy |
| Buel Fisher | Trenton | 5-10 $\frac{1}{2}$ | 160 | Black | Brown | Veni, Vidi, Vici |
| Ed Goldsmith | Webster Groves | 6- 0 | 162 | Blonde | Blue | Res Ipsa Loquitur |
| George Grant | St. Petersburg, Fla. | 5-11 | 170 | Brown | Brown | Sophist |
| Bob Hamerstrom | Omaha, Neb. | 5- 8 | 135 | Brown | Gray | Southern Style |
| Buddy Lathrop | Princeton | 5- 9 | 185 | Brown | Green | Wag |
| Dick Logan | Carthage | 5- 8 | 140 | Brown | Gray | Genial |
| George Longan | Kansas City | 6- 2 | 160 | Black | Brown | Smug |
| Arch Lowe | Springfield | 6- 1 | 175 | Black | Brown | Professor |
| John Mohler | Independence | 5-11 | 155 | Brown | Gray | Atlas |
| J. C. Moore | Columbia | 5-10 | 140 | Black | Brown | Ensembles |
| Earnest Pringle | Kansas City | 6- 1 | 160 | Dark Brown | Brown | Or Less |
| Earl Proctor | Columbia | 5-10 | 158 | Black | Brown | Bull of the Campus |
| Gene Robinett | Springfield | 5- 8 $\frac{1}{2}$ | 138 | Brown | Blue | Local Boy Makes Good |
| Walter Schlecht | Carthage | 5- 5 $\frac{1}{2}$ | 124 | Brown | Blue | Amateur Night |
| Harry Seward | Hardin | 5-10 | 168 | Brown | Gray | Embry Beau Brummel |
| Bill Stone | Webb City | 6- 1 | 175 | Brown | Brown | Virile |
| John Stufflebean | Brookfield | 6- 1 $\frac{1}{2}$ | 150 | Black | Brown | Bottoms Up |
| Mike Wells | Moberly | 6- 0 | 165 | Blonde | Gray | Stuff |
| Frank Williams | Carthage | 5- 8 | 135 | Blonde | Blue | Nonchalant |
| F. M. Wilson | Marshall | 5-10 | 160 | Blonde | Blue | Fox |

SIGMA PHI EPSILON

| Name of Pledge | Home Town | Height | Weight | Hair | Eyes | Description |
|-------------------|------------------|--------------------|--------|--------|-------|--------------|
| Charlie Wolter | St. Louis | 6- 0 | 150 | Brown | Hazel | Innocent |
| Al Sudholt | St. Louis | 6-02 $\frac{3}{4}$ | 145 | Brown | Hazel | Longfellow |
| Jean Huggins | Enid, Okla. | 5-10 | 155 | Red | Blue | Bottoms Up |
| Ed Friedewald | St. Louis | 6- 0 | 181 | Brown | Blue | Muscle Man |
| Alonzo Horn | St. Louis | 6- 0 | 200 | Black | Brown | Static |
| Homer Maize | Des Moines, Iowa | 5- 9 | 147 | Black | Green | Jellybean |
| Bill Kershner | Enid, Okla. | 6- 0 | 149 | Blonde | Blue | Wild Bill |
| Clarence Burton | Kansas City | 5- 5 | 145 | Blonde | Blue | Buckshot |
| Dick Joho | Farrell, Pa | 6- 0 | 150 | Brown | Brown | Swing-time |
| Dick Hledik | Wahoo, Neb. | 5-10 | 155 | Brown | Brown | Artist |
| Warren Mollenkamp | Lexington | 6- 3 | 200 | Brown | Brown | McGillicuddy |
| Bob Holliday | Columbia | 5- 7 | 150 | Blonde | Brown | Bottle |
| Bob Ewers | St. Louis | 5- 8 | 140 | Black | Black | Truly |
| Mike English | Monett | 5-10 | 190 | Blonde | Brown | Stonehammer |

FRATERNITY MANAGEMENT

A Personal Service for College Fraternities and Sororities

SORORITIES

ALPHA CHI OMEGA

| Name of Pledge | Home Town | Height | Weight | Hair | Eyes | Description |
|-------------------|--------------------|--------|--------|-----------|------------|--------------|
| Fanchon Barbee | St. Louis | 5- 4 | --- | Blonde | Mysterious | Intriguing |
| Frances Calvin | Miles City, Mont. | 5- 1 | --- | Dusky | Brown | Sunny |
| Barbara Carpenter | Columbia | tall | --- | Blonde | Gray-green | Peppy |
| Byrel Edminston | Elmer | 5- 3 | --- | Brown | Hazel | Refreshing |
| Barbara Hawley | Marshall | 5- 4 | --- | Black | Brown | Sparkling |
| Dorothy Hollman | North Platte, Neb. | 5- 6 | --- | Brown | Blue | A Natural |
| Jean Ott | Sedalia | tall | --- | Blonde | Brown | Lovely |
| Lillian Petersen | St. Louis | 5- 3 | --- | Blonde | Hazel | Charm |
| Georgia Raukohl | Hannibal | 5- 3½ | --- | Blonde | Blue | Swingtime |
| Ruth Regnery | Julian, Calif. | 5- 5½ | --- | Burnished | Changeable | Distinctive |
| Reba F. Twyman | Poteau, Okla. | tall | --- | Brown | Hazel | Entertaining |
| Virginia Voigt | St. Louis | 5- 5 | --- | Bronze | Blue | Stunning |
| Mary Whaley | St. Louis | 5- 2 | --- | Brown | Blue | Personality |
| Barbara White | St. Joseph | 5- 3 | --- | Blonde | Blue-green | Darling |
| Florantine Wilson | St. Joseph | 5- 0 | --- | Blonde | Deep Blue | Adorable |

ALPHA EPSILON PHI

| Name of Pledge | Home Town | Height | Weight | Hair | Eyes | Description |
|----------------------|----------------------|--------|--------|--------|-------|---------------|
| Norma Kosovitz | Kansas City | 5- 3 | 115 | Brown | Brown | Sweet |
| Annette Karchmer | Oklahoma City, Okla. | 5- 3 | 95 | Brown | Gray | Regular |
| Jo Chasoff | St. Louis | 5- 2 | 115 | Brown | Brown | Interesting |
| Marion Blond | Kansas City | 5- 6 | 125 | Black | Brown | Amiable |
| Hortense Werby | Kansas City | 5- 0 | 120 | Brown | Green | Charming |
| Ilaine Scher | Longview, Tex. | 5- 4 | 120 | Brown | Brown | Okay |
| Ann Sonin | Kansas City | 5- 0 | 85 | Brown | Hazel | Definitely |
| Becca Cile Rosenberg | Dallas, Tex. | 5- 2 | 102 | Brown | Brown | Scintillating |
| Doris Marlin | Kansas City | 5- 1 | 103 | Brown | Brown | Darling |
| Mignon Levy | Kansas City | 5- 4 | 125 | Brown | Brown | Cuddles |
| Patty Jacobs | Denver, Colo. | 5- 1 | 96½ | Black | Black | Striking |
| Constance Levich | Kansas City | 5- 2 | 105 | Brown | Hazel | Dazzling |
| Marjorie Goldstein | Hannibal | 5- 3 | 120 | Brown | Green | Tops |
| Leonore Green | Quincy, Ill. | 5- 4 | 130 | Brown | Brown | Pleasant |
| Sylvia Selinger | Dallas, Tex. | 5- 2 | 106 | Brown | Brown | Tweetie |
| Adeline Singer | Tulsa, Okla. | 5- 3 | 109 | Blonde | Hazel | Lovely |
| Cecile Cohen | St. Louis | 5- 4½ | 125 | Black | Brown | Vivacious |
| Irene Berliner | Joplin | 5- 1 | 129 | Brown | Brown | Melodious |
| Grace Wolff | Dumas, Ark. | 5- 6 | 126 | Black | Hazel | Queenly |
| Rosalie Fenster | Tulsa, Okla. | 5- 1 | 116 | Blonde | Green | Quaint |
| Inez Zerman | St. Louis | 5- 5 | 120 | Brown | Hazel | Dashing |
| Carolyn Saul | Chattanooga, Tenn. | 5- 4½ | 113 | Black | Black | Different |
| Louise Froug | Tulsa, Okla. | 5- 2 | 110 | Black | Brown | Adorable |

ALPHA GAMMA DELTA

| Name of Pledge | Home Town | Height | Weight | Hair | Eyes | Description |
|--------------------|---------------------|--------|--------|--------|-------|-------------|
| Joyce Gamble | Mexico | 5- 0 | 100 | Brown | Brown | Poise |
| Betty Ann Matteson | Columbia | 5- 4 | 130 | Blonde | Blue | Sincere |
| Ann Shock | Columbia | 5- 3 | 99 | Brown | Brown | Vivacious |
| Helen Williams | Nebraska City, Neb. | 5- 5 | 116 | Brown | Blue | Charming |
| Juanita Martenson | Kansas City | 5- 8 | 118 | Red | Brown | Friendly |
| Ramona Crowley | Kansas City | 5- 4 | 120 | Black | Grey | Radiant |
| Neva McCracken | Diamond | 5- 3 | 120 | Blonde | Blue | Lovely |
| Mary Ligon | Mayfield, Ky. | 4-10 | 90 | Brown | Blue | Petite |
| Dorothy Cropper | Troy | 5- 8 | 154 | Blonde | Blue | Gracious |
| Dorothy Lathrop | Columbia | 5- 1 | 110 | Brown | Brown | Adorable |

ALPHA PHI

| Name of Pledge | Home Town | Height | Weight | Hair | Eyes | Description |
|-----------------------|-----------------|--------|--------|----------|-------|------------------|
| Jean Rae Adams | Aberdeen, S. D. | 5- 1 | --- | Black | Brown | Personality Plus |
| Jane Gibbs | Columbia | 5- 3 | --- | Black | Brown | Cute |
| Anna Margaret Griffin | Mexico | 5- 6 | --- | Brown | Blue | Sophisticated |
| Dorothy Harmon | Columbia | 5- 5 | --- | Blonde | Brown | Smooth |
| Ruth Harmon | Columbia | 5- 4 | --- | Brunette | Brown | Friendly |
| Martha Henderson | Liberty | 5- 4 | --- | Brown | Blue | Sweet |
| Lutie Holtman | Columbia | 5- 8 | --- | Brown | Brown | Peppy |
| Ort Schnaedelbach | St. Louis | 5- 4 | --- | Blonde | Blue | A Hit! |
| Lee Simmons | Mexico | 5- 2 | --- | Brown | Green | Snappy |
| Margaret Williams | Silex | 5- 3 | --- | Brown | Hazel | Musical |

CHI OMEGA

| Name of Pledge | Home Town | Height | Weight | Hair | Eyes | Description |
|--------------------|---------------------|--------|--------|----------|-----------|--------------|
| Dorothy Gene Baily | Jonesboro, Ark. | 5-11 | 135 | Brunette | Blue | Radiant |
| Eva Mary Bohannon | Parsons, Kan. | 5- 6 | 118 | Blonde | Chameleon | Sophisticate |
| Sarah Brewer | Rolla | 5- 2 | 115 | Brown | Hazel | Chic |
| Marjorie Casteel | Columbia | 5- 4 | 120 | Brown | Brown | S. S. and G. |
| Frances Crank | Elsberry | 5- 1 | 98 | Blonde | Blue | "Spanky" |
| Virginia Daniels | La Plata | 5- 5 | 129 | Blonde | Blue | Demure |
| Mary Dixon | Owensboro, Ky. | 5-10 | 132 | Auburn | Brown | Debonnair |
| Dorothy Fennel | Moberly | 5- 4 | 125 | Brown | Brown | Romantic |
| Peggy Greene | Louisville, Ky. | 5- 4 | 110 | Brown | Brown | R-less |
| Dorothy Gunter | Bartlesville, Okla. | 5- 5 | 123 | Brown | Blue | Pixillated |
| Beth Hodson | Downs, Kan. | 5- 5 | 112 | Brunette | Hazel | Dramatic |
| Mary Sue James | Caruthersville | 5- 6 | 126 | Brunette | Blue | Vivacious |
| Elaine Jenkins | Kansas City | 5- 2 | 99 | Blonde | Blue-gray | Tantalizing |
| Arlene Leslie | Hutchinson, Kan. | 5- 7 | 125 | Brunette | Brown | Mannequin |
| Dorothy Otis | Kansas City | 5- 7 | 126 | Brunette | Brown | Witty |
| Lucille Porter | Mound City | 5- 5 | 105 | Blonde | Gray | Pricelless |
| Virginia Porth | Kansas City | 5- 5 | 119 | Black | Black | Impish |
| Virginia Robinson | Ironton | 5- 6 | 129 | Brunette | Green | Elite |
| Margaret Servey | Caruthersville | 5- 6 | 115 | Red | Blue | Bewitching |
| Lucille Shy | Ellington | 5- 6 | 128 | Blonde | Blue | Countess |

DELTA DELTA DELTA

| Name of Pledge | Home Town | Height | Weight | Hair | Eyes | Description |
|----------------------|----------------------|--------|--------|-------------|-------|--------------|
| Martha Beimdick | Carthage | 5- 3 | 120 | Blonde | Blue | Saucy |
| Jane Bradford | Columbia | 5- 3 | 125 | Brown | Brown | Patrician |
| Jean Camp | Ashland, Ky. | 5- 0 | 97 | Brown | Hazel | Adorable |
| Betty Culp | Leon, Iowa | 5- 3 | 128 | Brown | Brown | Swell |
| Jane Donnelly | Kansas City | 5- 5 | 120 | Black | Brown | Satisfies |
| June English | Kansas City | 5- 6 | 117 | Brown | Blue | Sophisticate |
| Jeanette Hoffman | Trenton | 5- 6 | 125 | Brown | Gray | Charming |
| Edith Harris | Dallas, Tex. | 5- 2 | 96 | Red | Hazel | Naive |
| Joan Johnson | Mt. Vernon | 5- 4 | 105 | Brown | Brown | 4-Point |
| Jane Lynott | East St. Louis, Ill. | 5- 4 | 118 | Blonde | Gray | Venus |
| Maxwell Lynch | Pine Bluff, Ark. | 5- 3 | 118 | Brown | Brown | Vivid |
| Frances Marx | Carthage | 5- 6 | 135 | Brown | Blue | Witty |
| Vera Stutsman | Washington, Iowa | 5- 6 | 123 | Dark Blonde | Brown | Queenly |
| Pat Taaffe | Joplin | 5- 6 | 125 | Brown | Brown | Effervescent |
| Ann Trotter | Kansas City | 5- 5 | 126 | Red | Hazel | Intriguing |
| Ruth Vlcek | Wahoo, Neb. | 5- 7 | 125 | Black | Blue | Gracious |
| Margaret Whittington | Greenwood, Miss. | 5- 4 | 115 | Brown | Blue | Smoothy |
| Dorothy Weigel | St. Louis | 5- 3 | 100 | Brown | Blue | Fun |

DELTA GAMMA

| Name of Pledge | Home Town | Height | Weight | Hair | Eyes | Description |
|----------------------|-------------------|--------|--------|----------|-------|--------------------|
| Juanita Maire | Linn | 5- 4½ | --- | Blonde | Hazel | Horrible |
| Jane Montague | Webster Groves | 5- 6 | --- | Blonde | Brown | Mousey |
| Jeanette Trice | San Marquis, Tex. | 5- 4 | --- | Black | Blue | Dopey |
| Virginia Hart | University City | 5- 5 | --- | Black | Brown | Peculiar |
| Dorothy Fair | Trenton | 5- 5½ | --- | Brown | Blue | Bad |
| Jane Weaver | Webster Groves | 5- 2 | --- | Brown | Brown | Terrific |
| Helene Koenig | Webster Groves | 5- 7 | --- | Chestnut | Brown | Ratty |
| Billie Dea Duerston | Evanston, Ill. | 5- 6 | --- | Blonde | Brown | Perfectly Terrible |
| Cynthia Byrns | Kirkwood | 5- 2 | --- | Brown | Hazel | Gooney |
| Doris King | Nevada | 5- 8 | --- | Brown | Brown | Droopy |
| Helen Mingle | St. Louis | 5- 2 | --- | Blonde | Brown | Spook |
| Marjorie Lynch | Sweet Springs | 5- 3 | --- | Blonde | Blue | Drab |
| Marjorie Jane Briggs | Bonne Terre | 5- 2 | --- | Brown | Hazel | Hag-like |
| Dorothy Bobel | University City | 5- 2 | --- | Brown | Hazel | Drooly |
| Ann Miller | Peru, Ind. | 5- 4 | --- | Blonde | Blue | Horsey |
| Frances Shepard | Columbia | 5- 6 | --- | Red | Blue | Plenty Awful |
| Jean Patton | Columbia | 5- 6 | --- | Brown | Brown | Cow-eyed |
| Betty Shelley | Columbia | 5- 4½ | --- | Brown | Brown | Scummy |

GAMMA PHI BETA

| Name of Pledge | Home Town | Height | Weight | Hair | Eyes | Description |
|-------------------|----------------|--------|--------|-------------|-------|---------------|
| Jean Bassman | Jefferson City | 5- 5½ | 120 | Light Brown | Hazel | Graceful |
| Helen Bode | Kansas City | 5- 4½ | 112 | Brown | Brown | Naive |
| Gertrude Campbell | St. Joseph | 5- 2 | 117 | Auburn | Blue | Sophisticated |
| Virginia Forsythe | Jefferson City | 5- 3 | 115 | Brown | Brown | Lots of Pep |
| Faith Killinger | Salem | 5- 4½ | 107 | Blonde | Blue | Charming |
| Dorothy Langdon | Amarillo, Tex. | 5- 3 | 118 | Red | Brown | Vivid |
| Elsie Mohr | Kansas City | 5- 9½ | 125 | Brown | Brown | Willowy |
| Billy Muncey | Kansas City | 5- 7 | 120 | Brown | Blue | Swell Dancer |
| Peggy Phelps | Kansas City | 5- 5 | 112 | Brown | Blue | Vivacious |
| Margaret Pigg | Jefferson City | 5- 5 | 116 | Black | Brown | Distinctive |
| Fehl Shirley | St. Louis | 5- 5½ | 112 | Black | Blue | Gay |
| Ruth Slater | Hale | 5- 3 | 118 | Brown | Blue | Witty |
| Marty Rupp | Kansas City | 5- 2½ | 105 | Blonde | Blue | Darling |
| Betty Ann Thice | Independence | 5- 5½ | 120 | Blonde | Blue | Sweet |
| Alice Tieman | St. Louis | 5- 2 | 95 | Light Brown | Green | Smooth |
| Lillian Toller | Columbia | 5- 6½ | 128 | Brown | Brown | Poised |
| Peggy Young | Kansas City | 5- 3½ | 100 | Blonde | Blue | Winsome |
| Jonelle Baker | Kennett | 5- 2 | 112 | Brown | Grey | Demure |

KAPPA ALPHA THETA

| Name of Pledge | Home Town | Height | Weight | Hair | Eyes | Description |
|-----------------------|--------------------|--------|--------|-------------|-------------|-----------------|
| Frances Kerr | Webster Groves | 5- 4 | 110 | Blonde | Bluish-gray | Unsophisticated |
| Virginia Vineyard | Cape Girardeau | 5- 3 | 104 | Blonde | Brown | Nice |
| Lisette Eschenheimer | Laredo | 5- 5 | 118 | Titian | Green | Chic |
| Christine Reinhard | Fort Smith, Ark. | 5- 5 | 103 | Blonde | Hazel | Winsome |
| Carolyn Jenkins | Kansas City | 5- 5 | 106 | Brown | Hazel | Cute |
| Jane James | Kansas City | 5- 4 | 110 | Brunette | Blue | Effervescent |
| Dorothy Dodd | St. Joseph | 5- 4 | 135 | Brown | Blue | Swell |
| Elizabeth O'Brien | Shortsville, N. Y. | 5- 2 | 118 | Auburn | Blue | Sweet |
| Helen Davis | Webster Groves | 5- 6½ | 114 | Red | Brown | Unusual |
| Mary Lou Martin | Odessa | 5- 4 | 110 | Black | Brown | Lovely |
| Betty Bean | Kansas City | 5- 6 | 117 | Black | Blue | Lovely |
| Forrestine Smith | Jefferson City | 5- 4 | 113 | Brown | Blue | Smooth |
| Mary Katherine Maurer | Excelsior Springs | 5- 5 | 112 | Brown | Green | Charming |
| Jane Kochtitsky | Columbus, Miss. | 5- 8 | 125 | Brown | Brown | Striking |
| Annette Tucker | Kansas City | 5- 6½ | 110 | Blonde | Green | Impish |
| Mary Megede | Richmond | 5- 4 | 108 | Blonde | Blue | Precious |
| Mildred Harris | Kansas City | 5- 5 | 130 | Brown | Blue | Rare |
| Virginia Coulter | Winnetka, Ill. | 5- 4 | 112 | Brown | Gray | Original |
| Katherine Nies | Webster Groves | 5- 2 | 108 | Brown | Hazel | Fetching |
| Jane Hopkins | Deerfield, Ill. | 5- 3 | 116 | Blonde | Hazel | Enthusiastic |
| Mildred Ice | Kansas City | 5- 2 | 100 | Brown | Blue | Adorable |
| Lorene Mabry | Alton, Ill. | 5- 4 | 115 | Brown | Gray | Amazing |
| Mary Marshall Mahan | Hannibal | 5- 5½ | 114 | Red-blond | Blue | Naive |
| Dixie Larrabee | Columbia | 5- 6½ | 115 | Brown | Brown | Vivacious |
| Kay Warnick | Columbia | 5- 7½ | 129 | Brown | Brown | Capable |
| Mary Celeste Denman | Fort Smith, Ark. | 5- 3 | 112 | Brown | Hazel | Clever |
| Frances G'Sell | Sweet Springs | 5- 2 | 100 | Brown | Brown | Different |
| Lois Ralston | Moberly | 5- 3½ | 105 | Light brown | Brown | Darling |

KAPPA KAPPA GAMMA

| Name | Home Town | Height | Weight | Hair | Eyes | Description |
|----------------------|-------------------|--------|--------|--------|-------|-----------------|
| Jane Birkhead | Jefferson City | ---- | 110 | Brown | Green | Swell |
| Betty Bright | Columbia | ---- | 100 | Brown | Hazel | Unsophisticated |
| Barbara Brink | Kansas City | ---- | 112 | Brown | Brown | Fun |
| Jean Campbell | Joplin | ---- | 101 | Brown | Blue | Vivacious |
| Betty Clark | St. Joseph | ---- | 120 | Brown | Brown | Plenty O. K. |
| Mary Ford | Little Rock, Ark. | ---- | 105 | Blonde | Blue | Everything |
| Georganne Garner | Richmond | ---- | 118 | Blonde | Blue | Charming |
| Margaret Ann Gillham | Jefferson City | ---- | 118 | Blonde | Blue | Sophisticated |
| Nadine Guernsey | Kansas City | ---- | 107 | Black | Black | Exotic |
| Martha Hunt | Ruston, La. | ---- | 97 | Brown | Green | Southern |
| Cindy Jones | Carthage | ---- | 115 | Brown | Blue | Peppy |
| Eleanor Kincaid | Joplin | ---- | 115 | Brown | Brown | Lovely |
| Margaret King | Columbia | ---- | 120 | Black | Brown | A prize |
| Gwen Knight | Columbia | ---- | 115 | Brown | Brown | A-1 |
| Jeanne Ann Lambert | Fort Riley, Kan. | ---- | 116 | Brown | Hazel | Smooth |
| Ledley Logan | Hannibal | ---- | 117 | Blonde | Blue | Grand |
| Peggy McVay | Trenton | ---- | 120 | Blonde | Blue | A Peach |
| Kitty Moore | Columbia | ---- | 110 | Brown | Blue | Attractive |
| Elizabeth Nye | Webster Groves | ---- | 115 | Brown | Brown | Talkative |
| Barbara Porter | Kansas City | ---- | 115 | Blonde | Green | Beautiful |
| Frances Ann Robnett | Columbia | ---- | 98 | Brown | Brown | Darling |
| Muff Williams | Mexico | ---- | 110 | Blonde | Blue | Fancy |
| Jean Tanzey | Kansas City | ---- | 106 | Blonde | Blue | The Tops |

PI BETA PHI

| Name of Pledge | Home Town | Height | Weight | Hair | Eyes | Description |
|----------------------|--------------------|--------|--------|-------------|----------------|--------------|
| Betty Ellfeldt | Kansas City | 5- 0 | 93 | Brown | Blue | Winsome |
| Ann Goggin | Webster Groves | 5- 4 | 110 | Brown | Black and Blue | Playful |
| Mary Margaret Noble | Stuttgart, Ark. | 5- 3 | 110 | Chocolate | Blue | Mae West |
| Mary Jane Stevenson | Minneapolis, Minn. | ---- | 102 | Very Blonde | Blue | Too Too |
| Joanna Morgan | Minneapolis, Minn. | 5- 5 | 110 | Blonde | Gray | Gay |
| Anna Margaret Riefma | Springfield | 5- 4 | 119 | Blonde | Blue | Definitely |
| Patty Jerome | Minneapolis, Minn. | 5- 3 | 123 | Cinnamon | Blue | A Natural |
| Virginia Nystrom | Webster Groves | 5- 2 | 110 | Black | Hazel | Radiant |
| Katharine Johnson | Carrollton | 5- 5 | 115 | Buff | Blue | Top |
| Eleanor Haley | Louisiana | 5- 6 | 119 | Black | Blue | Flirt |
| Martha Witherspoon | Kansas City | 5- 7 | 120 | Dark Brown | Brown | Patrician |
| Georganne Roth | Moberly | 5- 4 | 122 | Mahogany | Brown | Different |
| Mary Jane Yates | Sheridan, Wyo. | 5- 4 | 115 | Blonde | Big | Vogue |
| Barbara Hartwig | St. Joseph | 5- 6 | 122 | Copper | Brown | Chic |
| Joan Campbell | Kirksville | 5- 4 | 107 | Brownette | Blue | Decidedly |
| Ruth DeVault | Mexico | 5- 3 | 109 | Blonde | Round | Precious |
| Nan Ruth Barnes | Anderson | 5- 7 | 120 | Light | Bistre | Cameladish |
| Helen Walton | Springfield | 5- 5 | 125 | Auburn | Brown | Refreshing |
| Mary LeVec | Kansas City | ---- | 110 | Light Brown | Blue | Smooth |
| Jeanie Bird | St. Joseph | 5- 2 | 106 | Blonde | Green | Chirpy |
| Mabel Kinyon | Columbia | 5- 2 | 103 | Chestnut | Brown | Collegiate |
| Marty Payne | Columbia | 5- 5 | 115 | Brown | Blue | Yummy |
| Ellen Stine | Columbia | 5- 5 | 120 | Blonde | Brown | Charming |
| Libby Hanley | Sedalia | 5- 3 | 109 | Blonde | Gray | Exhilarating |
| Lee Hawthorne | Mexico | 5- 4 | 115 | Brunette | Brown | Poised |
| Jean Lindsay | Tulsa, Okla. | 5- 6 | --- | Blonde | One Glass | Spectacular |

Continued on page 18.

-ain't got time for
loose talk folks



*they've got TASTE
and
plenty to spare*

Chesterfield

Made by LIGGETT & MYERS TOBACCO COMPANY—*and you can depend on a Liggett & Myers product*

SHOWME SHOW

(Continued from Page 1)

Mutiny

Charles Witte, Phi Psi and Bill Farris, Kappa Sig are trying to outdo one another with Virginia Voigt, Alpha Chi. Did you know she committed the unpardonable sin of breaking a date with Jack Schweitzer, Delt. Ain't it awful? He's still beefing about it.

Keet McElhany, Beta, who definitely approves of Margaret Curtin again this year, threw in the towel and scratched this off for journalism—Heaven: Pi Beta Phi, Hell: Phi Delta Theta, Eternity: this course.

Spanish Inn

Nancy Lupfer, Gamma Phi, and Benton Calkins, Phi Delt, seen lating it at the Coronado. Why do they say boys take girls there that they don't want to be seen with?

Question

Can Mary Meier see far enough to know that all the new pledges have their eyes on her prize, Dutton Brookfield, Beta house.

Pals

Laughs are that Raglan, K. A., the red haired boy of the personable clothes, will get the rough stick from every house on the campus as soon as he sells his car.

They're singing the Pi Phi theme song everywhere, "You've Turned The Tables On Me."

Barbara White, Alpha Chi pledge and Tom Ellis, K. A. have discovered the possibilities of holding hands.

Slump

The all around in the wayer: Jack "Sauer" Kraus, Sig Chi, seems to delight in carrying books and holding hands. For all the nut starlets. We personally don't think his stock rates so high when it comes right down to the real McCoy.

Speed

Speed Kelly gazing madly at the moon last Friday night asked a Pi Phi pledge "Are you the sisterly type?" And as the poor jittery little thing gasped, "Definitely." We heard him say things that only Speed could say with his heart and soul in it. His heart is in St. Louis, Neophytes, which usually means something.

Directory

If you can't find him: The Delt and the Kappa Sig are fighting over the Dixie as their annex, the Sig Chis swoop at the shack, and then the Phi Delt run their flat and the still darker Phi Delt House. When reprimanded by the newie, Justin Hammond asked in a horrified voice, "Tell me, are the other houses perfectly brazen about it?"

Prize two-timer and player around is Al Billington, Kappa Sigma romeo. He tells them that he'd put his pin on Missie Atkinson, Pi Phi—if he had one—and then there's the K. C. love that he spends his time trying to get a ride up to see.

Not to mention Maurine Moore, gullible Theta, who paid him two consecutive visits to the Co-Op because he told her after two dates with her that he wanted to go with no one else.

Next day Al is romancing in Gaeb's with another queen and explains to the Moore girl that he was begged by her sorority sisters to cheer her up because the poor child was dying of homesickness. Maurine sympathized with him until next jelly day the great lover tried it again—nice going, Al!

A lot smarter is the hard to get John Troug, Beta who has Maxine Beard, Arrowite crying on his shoulder begging for some more whip-cracking.

For those who remember all the way back when—the Sig Alph's are swatting their pledges if they hear of any more beer busts. How can the boys throw away tradition like that? The S. A. E.'s have a prexy this year who rates tops—you've never known anyone crazier than Abbott Ferris. He and Vaughn Bryant are two boys we like to see around.

(SORORITIES Continued)

PHI SIGMA SIGMA

| Name of Pledge | Home Town | Height | Weight | Hair | Eyes | Description |
|----------------------|------------------|--------|--------|----------------|------------|----------------|
| Annabelle Brownstein | University City | ---- | --- | Devilish | Warm | Ginger |
| Becky Friedman | Belleville, Ill. | ---- | --- | Reddish | Languid | So Nice |
| Mildred Gold | St. Louis | ---- | --- | Goldie Locks | Hil | 2 Times 2 Plus |
| Mildred Hager | Sea Gate, N. Y. | ---- | --- | Curly Head | Bright | New Yorker |
| Lorraine Marcus | University City | ---- | --- | Silken | Bewitching | Lovely Lady |
| Estelle Richman | Eureka | ---- | --- | Like the Raven | Commanding | Clever |

PHI MU

| Name of Pledge | Home Town | Height | Weight | Hair | Eyes | Description |
|-----------------|----------------|--------|--------|-------------|-------|-------------------|
| Audrey Zeiser | Webster Groves | 5- 4 | 118 | Dark Brown | Blue | Butterfly |
| Merne Bone | St. Louis | 5- 4 | 110 | Blonde | Blue | Personality Plus |
| Ruth Morgan | Columbia | 5- 3 | 113 | Blonde | Blue | Extraordinary Gal |
| Anita Ryan | St. Joseph | 5- 6 | 120 | Brown | Brown | Poised |
| Gladys Weil | St. Louis | 5- 6 | 124 | Brown | Brown | Gracious |
| Ann-Ora Pugh | Columbia | 5- 5 | 120 | Light Brown | Blue | Clever |
| Margaret Morris | Columbia | 5- 2 | 115 | Brown | Blue | Dancing Lady |

Jean Lindsey, Pi Phi, returns from class in a wool sport dress of natural colored Jersey with accents of green. The green swagger felt hat → and matching fleece sport coat complete the outfit from JULIE'S



Mary Meier, Kappa, awaits her date in a suit of green and gold--Green box reefer coat, gold skirt ← and green velveteen blouse--Topped off with a hat of velour. Of course the outfit is from JULIE'S

POLITICS

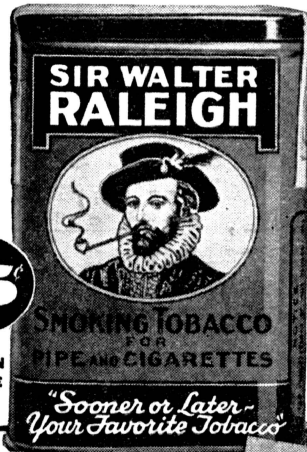
(Continued from Page 8)

LO—THE POOR INDIAN!



TWO PUFFS from that soggy pipe full of fire-water tobacco and another redskin bit the dust. We tell travelers as well as stay-at-homes that the true pipe of peace should be regularly cleaned, and packed with nothing but inoffensive Sir Walter Raleigh Smoking Tobacco. It's a secret blend of definitely milder Kentucky Burley leaf. Burns slow, pacifies the tenderest tongue and spreads a most delightful and winning fragrance. We're so blamely proud of Sir Walter Raleigh we wrap it in heavy gold foil for extra freshness. Ever treated yourself to a tin? Only 15¢.

**SWITCH TO THE BRAND
OF GRAND AROMA**



FREE booklet tells how to make your old pipe taste better, sweeter; how to break in a new pipe. Write for copy today. Brown & Williamson Tobacco Corporation, Louisville, Kentucky. Dept. W-610.

However, this is a subject to change as a Faurot line-up. The coalition is loosely hung together and has some support which might be classified as Grade Z lukewarm. In fact, these people have one leg over the fence ready to jump into Flanigan's wagon, if Dave can pull one out of the hat. Maybe they've already jumped. Niedner would like to know. So would Flanigan. As a matter of fact, several politicians have attended meetings of both caucuses on the same days. They are the fellows who wear suspenders and belt both.

But to get back to those paying jobs. They are the meat and drink of the gravy-bowl boys. And next spring they will be up for passing around again. And since everyone likes gravy, they all want to be at the head of the line for their share. So all the squirming around resolves itself into keeping the lineups with two things in view—one, if you've got a man to get in as editor or business manager, get in with the dominant faction in the present assembly, and two, if you want something the following year such as Student President or Clerk or the editorship a year from this spring, get in with the bunch which will have control of next year's assembly. And if you can see that far ahead and figure out what the situation will be then, you're wasting your time here—Farley and Hamilton can use you.

And then when you've got all that figured out, just remember that there are Pan-hel elections to be won for the boys, that in each professional school you have professional fraternities which include members of both sides and run third-party candidates who usually win out there, and that you can't even joke with these politicians—they're so damned serious and touchy, they'll bite you if you say anything nasty.

And that's why you won't be seeing me around school for some time. I'm leaving town. I may have offended them by spilling the beans.

▽▽▽▽▽

CRITICISM

To the Editor of Showme:

Gentlemen, it's no contest. One cannot imagine the student vying for honors with the master. Ellington's is a fifteen piece 'jam' band. Playing their peculiarly complicated arrangements without benefit of orchestration is ample proof of their superior musicianship.

We do not wish to decry the merits of Lunceford and Co. Granted that they have a fine organization and that they possess some fine ideas. But if anyone doubts at what school Lunceford studied his musical technique, let him consult the dates of the respective waxings of Lunceford's widely-acclaimed 'Rose Room'—Decca, and Ellington's recording of the same tune for Brunswick.

The arrangements are identical—note for note. Ellington recorded his in 1933—Lunceford early last year.

Ellington still shows the way.

J. F. B.

SLAM!

The make-up of the Showme could be vastly improved. It lacks most of all balance. Part of the mag is dead because of too much print. Other parts fail to hold together, because of too much air. Get more cuts in your dead copy, and put something besides filler jokes in the advertising.

—Franklin Stones

—Thanks, why don't you come down to the office?—

Women on the Bench

By a Staff Member

There is not much margin anymore between men's work and women's work. Women have encroached upon all the callings originally meant for the men, and nowadays it's an accepted fact that women may move in on any profession, bar none.

And while speaking of bars, that brings up the subject of three feminine aspirants to the law profession.

There are, in this state university—the one place left where men are supposed to rule—three women studying for the bar—the legal bar.

The Alpha Phi house quarters two of these women—Miss Margaret Barton, a pledge from 'way out in Wellington, Kansas.

In her under-graduate days she was well-known at the University of Kentucky, and later at Washburn Colege, Topeka.

And Topeka is the home of Miss Gladys Mathews, another Alpha Phi, who plans to get in that profession where you advance by easy stages from bill collector to a partner, to an office of your own, to a firm, to jurist, and on up.

Only she wants to skip all that and take up juvenile court work. She figures New York City as her first choice for a start, but Kansas City, the town where 12-year-olds not only vote—but vote two or three times at one election—is her second choice.

Miss Mary Ford differs from the other two. She is a Kappa instead of an Alpha Phi, and she most emphatically is not from Kansas.

Her home is Little Rock, Ark., and that means she is a staunch Democrat, and she creates a big-

ger furor at a political rally than a regiment of old Southern colonels.

The interview with these women was a little after the "cane carrying" season at the law barn, so it cannot be said with any great accuracy that they carry canes.

But these feminine barristers ask no quarter of anyone, and the only conclusion to be drawn is that if they were told to carry a cane, they carried it.

And the only other conclusion beside that to be drawn is, it might not be a bad idea to get acquainted with these who some day may sit on the bench and wear a black robe, while you march in and sit in the defendant's chair garbed in prison gray.

Or if not that, just know them. They are interesting persons.

▽ ▽ ▽ ▽ ▽

Irate Father (discovering his daughter on young man's lap): "Jane! What does this mean?"

Daughter: "Come back in about fifteen minutes Dad. I ought to know by then."

—Reserve Red Cat

●

Tourist (to Indian in heart of reservation)—"White man glad to see red man. White man hope big chief feel tip-top this morning."

Indian (calling)—"Hey, Jake, come here and listen to this bozo. He's great."

—Tiger.

●

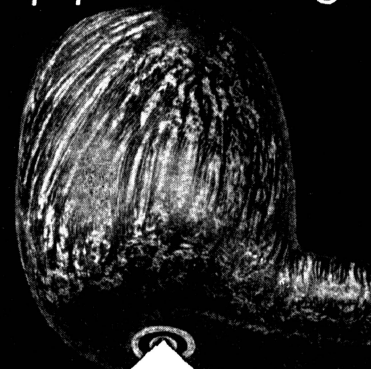
A TOAST

Here's to happy days; any old fool can have a good time at night.

—Rammer-Jammer

CARBURETOR (Patent Pending) KAYWOODIE

an entirely
NEW
PRINCIPLE
in pipe smoking



UPDRAFT

Fresh air goes in here

THE new Carburetor Kaywoodie has the following advantages:

a. *Its Perfect Mixture* (of Air and Smoke) improves the flavor, taste, and aroma — because the tobacco burns better.

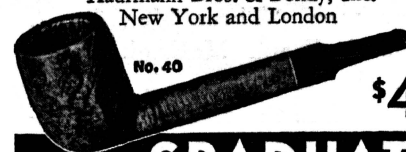
b. *Its Perfect Mixture* (of Air and Smoke) keeps your bowl dry even with constant smoking.

c. *Its Perfect Mixture* (of Air and Smoke) keeps your smoke cool, and will not burn your tongue no matter how fast you smoke.

d. *Its Perfect Mixture* (of Air and Smoke) takes the rawness out of any tobacco.

The Updraft of the new Carburetor Kaywoodie is the result of 5 years of steady, intensive experimentation. Now it's here—perfected. This new pipe looks just the same as the regular Kaywoodie, except that it has a "carburetor" hidden in the bottom of the bowl—it breathes at the bottom! It's MILD—mild enough for cigarette smokers! We ask all smokers to examine it at their dealer's—the new taste in pipes! Of course it has the famous Drinkless Attachment in the stem.

Kaufmann Bros. & Bondy, Inc.
New York and London



\$4

to **GRADUATE**
KAYWOODIE

THEATRE TALK . . . By Porter Randall

DRAMA

THE COMMERCIAL

Tribute

Long, lusty, and loud have been the cheers and haros for that young adventurous rodent, Mickey mouse. He is, semingly, Hollywood's first actor of the screen.

When Mickey came to screenland not so many years ago, producers and promotors sneered and snickered at the idea of a cartoon mouse ever acquiring riotous popularity. But today, with ten thousand movie houses demanding, clamoring, for animated novelty releases, the Hollywood barons realize their fallacy.

Disney, the creator who pulls the strings for his puppet, may rightly gloat over the surprise success. But Disney busies himself with other contemplations. Now under production in the novelty studios is the first, all-colored, full-length, cartoon feature—"Snow White and the Seven Dwarfs." It will cost one million dollars to make.

And when it's finished, Disney has intimated ambitions to do an opera with his cartoon folk doing the vocalizations. Not barnyard howling, but sweet, harmonious singing.

Teaser

Shirley Temple's new vehicle will be "Stowaway," supported by Robert Young and Alice Faye . . . When you next see Jeannette MacDonald on the flicker it will be in the screen's version of Rudolph Friml's musical romance, "The Firefly" . . . Comes now to theater audiences that mammoth stage wow, "Three Men On A Horse." Frank McHugh has a part therein . . . Jack Benny's back to face the camera for "College Holiday" . . . Claudet Colbert is making the Puritan film "Maid of Salem" on the Paramount lot . .

NATIVITY

And so with the birth of a new Showme comes the birth of a new feature therein. And like the father of a newly-born child, we adopt a seemingly boundless responsibility—without a notion of what future now awaits us.

To you who thrill to the romance of the drama, to you who tingle to the tones of a melody, we properly dedicate these columns. In the following annals let it be our purpose, our policy, to bring you the talk of the theater, the tempo of the music. What popularity we may acclaim, we know not. That, of course, is for you to decide.

Far back in the dank, dismal corridors of Columbia's own Virginia building is located one black little hole which we know as Office. Inside is to be found the maternity ward of Showme. And inside there lies one mammoth desk to receive your curses, your bouquets, for what you now find below.

Herewith, Showme offers Theater Talk—echoes from the gallant glamorous world of the theater.

Orchids

Of all the pulchritude assembled in screenland for the parade of beauty we throw our bouquets to pretty, petite Olivia de Havilland of the Warner company. You remember her, perhaps, as Hermia in "A Mid-Summer Night's Dream." She co-starred with Errol Flynn in "Captain Blood" and "Charge of the Light Brigade." And with Frederick March in the recently exploited "Anthony Adverse."

Chatter

Ray Milland, England's new importation to Paramount, hired a chauffeur last week. Not because he knew anything about a car. But because he liked him. Now, Ray, who has just finished "Jungle Princess," is teaching the chauffeur to drive . . . George Seaton and Robert Pirosh, scenerio writers both, after working seven months with the Marx Maniacs on their new production, "A Day At The Races," recently

checked in at a southern California sanitarium for a few days of relaxation . . . Latest of Hollywood actors is Wall-Eye, twenty-one-inch stream trout, bought by Director Jack Conway for scenes with Bill Powell and Myrna Loy in M-G-M's "Libeled Lady."

THE LOCAL

Production

It's "Bury the Dead," Workshop's first presentation this year. We feel that Irwin Shaw, the playwright, has created a grave situation.

Cast

Mairs takes over the weeping part in the play . . . no count . . . but she could be conservatively behind her eighth bawl . . . Howe can't seem to get away from her pretty name . . . she plays the part of Joan . . . Ohnemus of the tripledeedes will do her Bess . . . we hope . . . knockknock.

Setting

When you see "Bury the Dead" you will notice the slanting tree in the background. And you'll probably see that the two prominent branches symbolize human hands. The line of the tree, we're told, adds variety to the many vertical lines found on the stage set.

Random

Panitt, the lost lover, started out with ten lines in "Bury the Dead." Latest reports show that he's down to three and going strong. He hopes to still be on the stage when the play goes off. He probably will be still . . . Bogiano cartoons on everything from the blackboard to the tissue filter in the new Viceroy while he develops his settings . . . These corpses in "Bury the Dead" are so insistent to roam the earth

(Continued on page 26)



SHE: ... **"FRESH!!!"**

HE: ... **"YOU SAID IT!"**



AND you'll say "fresh," too . . . when those appetizing *Double-Mellow* Old Golds pop out of their *double-Cellophaned* package. And, if Old Gold's doubly-fresh prize-crop tobaccos don't give you double-smoking-pleasure double-quick . . . THEN, we'll pay you double-your-money-back. And *that* is a double-dare.

ZIPS OPEN DOUBLE-QUICK!

Outer Cellophane Jacket opens from the Bottom.
Inner Cellophane Jacket opens from the Top.

Copyright, 1936, by P. Lorillard Co., Inc.

PRIZE-CROP TOBACCOS MAKE THEM **DOUBLE-MELLOW**
2 JACKETS OF "CELLOPHANE" KEEP THEM **FACTORY-FRESH**



By Courtesy of PIX Magazine, Aurora, Mo.

by Irby

● "HOW ABOUT ME SHOOTIN' A COUPLE OF THESE PLUGS?"

FROSH ORIENTATION

The Old Campus Teetotum Whirls Around
With Wise Frosh Right in the Middle

By WALTER GELB

I GET off the train at 7:40, and at 7:50 I'm in a fraternity house. At one o'clock the next p. m. I'm in another fraternity house. And then I'm back in the first house. I'm dizzy, I'm sleepy, and I'm "hot-boxed." I go to a meeting at Jesse and I'm a pledge. Also I'm paddled. Great fellows, these actives!

I wake up the next day and I take a college aptitude test. Then somebody says I'm going to college. I try to act uppish, and I'm paddled again. Also I'm de-uppished. I'm fixed up with a date and I go "jellying." I like beer but the date doesn't. We drink cokes. No more blind dates.

I go to registration and I'm pushed around. I'm handed yellow cards and someone says I have to go to classes. I make a check big enough to buy a million beers and I give it away. Now I'm a freshman. I make another check so I can be a sophomore. But the cashier doesn't take it. So I'm still a Frosh.

Next a. m. I'm pulled out of bed at 7. (Unmerciful Brutes). I go to Psych. class. The prof talks about intelligence. I don't know what he's talking about but I don't care. I'm too smart. I go to rock class and the prof talks about geology. I don't care again. What has a rock got that I ain't got?

When I go to Spanish, it works me up. I feel like a rebel. They got what it takes. I make toy airplanes to fight the Communists. The instructor asks me to leave class. I go to English. It's 2 o'clock already. I go to sleep. I can talk English.

Back in Hartford, Conn., WALTER GELB was a milkman, and, by his own free will, he admits that on his day off he went on long-distant jaunts—running and walking—but mostly running.

Came to Mizzou and joined the frosh track squad. He predicts the finish there and lets everyone in on the fact he doesn't expect to get very far running.

Intends to some day realize his ambition of writing a syndicated political and economic column. His immediate future is two years of arts and science—then the School of Journalism.

Next day I get a uniform. Immediately I want to go home and show off. I can't. I got an appointment for that night. Two paddles this time. Next day I smoke a cigarette in Ag building. This time a hundred paddles. But I don't care. I'm just getting used to it.

That night I make my own date. I drink beer. I borrow money from my roommate on account of because I didn't have any. He swears and gives me a quarter. I thank him profusely. When my check comes he borrows a dollar. I give it to him willingly, because he says he knows some Stephens girls. Also I like Stephens girls.

Mean the while I go to classes regularly. I only got six cuts in

three weeks. I also was supposed to have six tests. Six cuts, no tests.

Then one day I see a guy with a yellow and black hat and a green button. I like yellow and black hats but I don't like green buttons. I get a red button. I put on the hat and somebody says for me to "button up." I button up everything. I take the button off my hat and button it. It was a big guy who said so.

That night I go to a black and yellow hat meeting. I cheer and I get a sore throat. But I cheer some more. I'm a good freshman. Even when the man on the stage stopped, I cheered. I'm a loyal freshman. When he said to come to the game Saturday and cheer, I said yes to myself. I'm a faithful freshman. But when he said we got to whitewash the "M," I rebelled. Nobody could tell me you spell "Tiger" with a "M." Also my girl friend's name don't begin with no "M." So I drink beer.

▽ △ ▽ △ ▽

Extract from a coed's letter home:

"I am getting fat. I weigh 128 stripped. Of course, the scales at the drug store may not be so accurate, but that's what they register."

My roommate says there are some things a girl should not do before twenty.

Well, personally, I don't enjoy a large audience either.

—Carnegie Tech Puppet

To live, frosh, is to learn things your mother warned you against.

THEATRE TALK . . . Porter Randall

that it's going to take lots of rehearsing to get them into the grave . . .

MUSIC

THE POPULAR Swing Stuff

Not so long ago there came to Columbia town one Charlie Agnew and band. Weary and worn after driving all night from Chicago where the outfit had just terminated an engagement at the Blackstone Hotel, the amiable Agnew met reporters halfway and tore no hair from his head when asked to characterize the so-called swing-music.

Said Agnew: "This swing stuff, it's simple enough. The boys simply jam by sections instead of by individual men. It's specifically the type of music that's demanded by professional dancers. It's good enough. But remember this, swing music must be interspersed with sweet tunes to maintain a necessary, agreeable balance."

And for that philosophy: much praise. Too many are the bands on the air today who torture your ear drums, with the bang bang, hey hey stuff. Swing rhythm is unexcelled, but there must be—at least now and then—a rendition of the smooth, the sweet. Put together the Waltz King and the Swing King and the result would hit a new high in positive figures.

Don't cry, Joe College, you could still dig shins to a fast tempo.

Torrid

His name is "Sugar Blues" Land, the trumpet man, and, incidentally, the hottest of his kind that ever reaped rhythm on the campus of this great, good factory of learning. He's with the Reick-Johnson band at Harris'.

Location

Benny Goodman and band, after a hectic summer, now appear at the Hotel Pennsylvania's new Manhattan Room. Benny first played at the Palomar in Los Angeles, then worked with Paramount on the "Big Broadcast," in addition to producing Camel's weekly programs over the air lanes.

Shep Fields and his famous rippling-rhythm orchestra is still the feature at the Starlight Room atop the ever popular Waldorf-Astoria in New York.

Cab Calloway and Bill Robinson are the headliners of New York's new Cotton Club Revue.

Horace Heidt and band now move from the Drake Hotel, Chicago, to the Fox Theatre in Detroit, then to the Milwaukee Centennial. Later he goes to the Texas Centennial at Dallas, then to one of Boston's swank bright spots.

Rumor

Wayne Wright, jelly-joint maestro of two yeas past is now doing his stuff on a radio program in New York. So we hear.

Nothings

The band left leaderless by the death of Orville Knapp will go to the Edgewater Beach Hotel in Chicago under the baton of George Olson . . . Shep Field's concertina wizard was responsible for the solos screened by Fred MacMurray in "The Princess Comes Across" . . . Helen Ward, comely vocalist with B. Goodman's band, is reported engaged to the bass player in the outfit . . . Rex Stewart replaces the famous, little, left-handed Freddy Jenkins as third trumpet man in Ellington's combination . . . The Duke also has two men playing string bass in the place of Wellman Braud who had been associated with the outfit since its inception nearly a decade ago.

Puzzle

Earl Hines used to entertain Grand Terrace guests with a tune which he styled "Take It Easy." When Goodman hit the air the following spring he played the same tune under the title of "The Goodman Swing." Now we find, in flabbergation, that Benny has recorded the identical number for Victor and called it "Swing-Time In The Rockies."

Relative in example is Fletcher Henderson's current bid for popularity, "Lonely Night." A year ago Joe Haymes was calling it "Take My Word."

THE SYMPHONIC

Exceptional

When a university plans an extensive season of music fiesta—that's mentionable. When a university plus two colleges contemplate an extensive season of music for the same community—that's colossal.

There's a triple music season on the fire for Columbia this year.

Program

First feature here for student recital next Nov. 18 is the Moscow Cathedral Choir. And following on Dec. 2 comes Paul Althouse, tenor, splitting dual honors with Kathryn Meisle, contralto. Second half of the year's program features the St. Louis Symphony Orchestra; Joseph Hofman, pianist; Albert Spalding, violinist; and Lily Pons, soprano.

And More

Christian College also flourishes the bid for a glamorous concert series this year. First attraction is Jeanne Palmer, dramatic soprano and Met star, scheduled to appear here soon with Benjamin De Loache, baritone, in a joint vocale. After Christmas bookings include Edwin Strawbridge, dancer, Olga d'Allaz, song and dance artist of the Balkan mode, and the Ionian Male Quartette.

Over Stephens' way the orchestra, Adair batonned, is being groomed for another symphony cycle this winter, the program of which has not yet been released.

SCRAPS OF HUMOR

ELASTIC SITUATION—

"Rubber Bands Hold Up Americans in Crete."

Headline from Bluefields (W. Va.) Telegraph.

●

"How did you find the girls?"

"Opened the door marked 'Women' and there they were."

—Varieties

●

Caller: "Is your mother engaged?"

Little boy: "I think she's married."

—N. Y. U.

●

Is the editor in?

No.

Well, throw this poem in the waste basket for me.

—Varieties

●

Bob: "Before we were married, you swore you would never look at another man."

Dot: "Just another campaign promise gone to hell."

—Varieties

●

One of the freshmen was bearing up rather nobly under a particularly weary R.O.T.C. drill when he very inadvertently passed by the Captain without saluting.

"Say, Buddy," said the captain, with characteristic sweetness, "do you see the uniform I'm wearing?"

"Yeh," said the rookie, looking enviously at the captain's almost immaculate uniform, "look at the damn thing they gave me."

—Boston Bean Pot

●

"Car No. 3—go to Thirteenth and Maine; see a woman about a dog."

"Paging Originality!"

Mr. Hurst's Hair Styles Are Hits

HOUSE BEAUTIFUL

BEAUTY SHOP

*Ask About Our Frederic Vaporizing
Treatments.*

PETERSON'S

for

Savitar Pictures

Over Central Dairy

Dial 6691

Are Better Grades Worth a Half a Dollar?

If they are, you want a copy of our new illustrated book—"The Psychology of Getting Grades"—Price 50c. 90 pages of help for harassed students, written by a graduate with M.A. in Psychology, who treats the following subjects, among others: Selection of courses; Choosing professors; Impressing the "profs."; Selective reciting; Hitting exams; Grade getting ability. Learn how to get grades with half work and half salesmanship, instead of all work. Buy your copy from your college book store, or address us as follows:

LUCAS BROS.

Publishers

Columbia, Missouri

Gentlemen: Here is my ½ dollar. It hasn't done me much good, so I am willing to trade it for a better grade. Send me your book, prepaid.

Name

Address

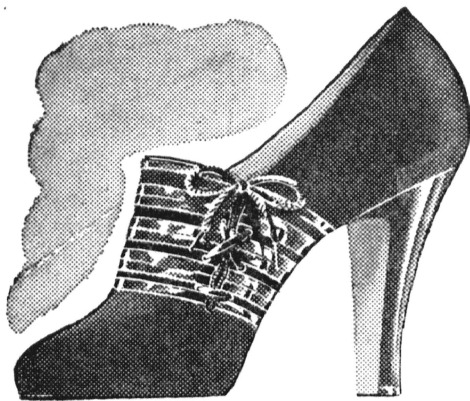
On Sale at The Missouri Store



CAROLINA STRUNCK, *Alpha Delta Pi*



PAMELA SWITZLER, *Kappa Kappa Gamma*



Jacqueline



SUEDE is smartest when brightened with shiny leather

Echoing the mode for sudden and effective contrast... and superbly smart to wear with the lovely styles brought out this season. Jacqueline combines suede with patent leather... with calf... or with baby alligator... stunning in Brown, Black, Ink Blue or Araby Green.

6.50

THE *Jacqueline*
SHOP

910 BROADWAY

ROOMMATE

By B. R. SHY

I set my baggage out on the sidewalk, paid off the taxicab driver, and took a deep breath of the cool, slightly-smoky air of the evening. At the moment, the short narrow street seemed deserted, and all at once I felt as I had two years before, when I first came to the school. I thought: "This year it's going to be different. This year I'm really going to study." Then I walked up the steps and knocked on the door.

My landlady was quite as I had remembered her. She said, "Why, it's Mr. Brown! Why, who would 'a' thought—! Come right in, Mr. Brown. Now, Mr. Brown, your room's fixed up and waiting for you. I had the whole house gone over from top to bottom this summer. Re-papered and all. I'm sure you'll like it."

She lowered her voice slightly but continued without a pause:

"Mr. Rudovitch isn't coming back this year, so you'll have a new roommate. Mr. Blankenship, I think he said his name is. Seems like an awful nice boy. This is his first year here. I think he's from the country. I'm sure you'll get along."

She smiled at me fondly to show that she considered me her favorite boarder and disappeared into the kitchen. I picked up my grips and went upstairs.

Mr. Blankenship was lying on the bed by the window. Last year, that bed had been mine, but there was something in Mr. Blankenship's pose that assured me it wouldn't be this year. My new roommate looked strong and healthy, I observed. He also looked as if he might be from the country.

He said, "H'ar ya?"

"Very well," I said. "Brown's my name."

"Blankenship," he said, and stood up to shake hands. Standing, he looked tremendous, and I saw it was quite unlikely that the matter of beds would come up.

"What are ya here?" he asked, standing with his hands on his hips and surveying me as if some one were offering me for sale.

"Junior," I answered, hoping it was the information he desired.

"Oh," he said as if disappointed, and lay back down. "I thought ya might be a freshman. That's what I am," he added unnecessarily.

I began to unpack my suitcases. The two top drawers of the dresser were already filled with clothes. I lit a cigarette and began to fill the two lower ones.

Mr. Blankenship raised up on an elbow and spoke. There was a touch of horror in his voice.

"Say, do ya smoke?"

I admitted that I did.

"But don't it get awfully stuffy in here with the windows down?"

The windows were up, I pointed out.

"Yeah, but in winter they wouldn't be. I don't smoke," he added righteously.

I finished unpacking and stood by the window. It had turned dark outside and all I could see was the streetlight on the corner and its ring of bugs. That was all right, I thought. All I would need this year was a desk and chair. This was my third year. I'd soon be out, and jobs were scarce. Best prepare myself while I had a chance.

A car came down the street and turned at the corner. A moment

later a boy and a girl passed, the girl's heels clicking sharply on the sidewalk. The town was coming to life. Mr. Blankenship threw his legs around and sat up.

"Say," he wanted to know, "do you know Sadie Barrett?"

I answered as anyone in school would have done. I answered yes.

He seemed interested. "Do you know where she stays?"

"She's a Phi Chi," I said.

"A what?"

"It's a sorority," I said. "It's where she stays."

"Oh," he said, and thought a moment. Then, "Say, I bet I could call her up from here."

"Sure," I said, and thought: Maybe he can, but for two years now I haven't dug up the nerve.

He got up and went out into the hall. A moment later I heard him call, "Hey, c'm'ere a minute, will ya?"

I went out. Mr. Blankenship was looking for a crank on the phone. He said, "Look, now. You get 'er on the phone and I'll talk to 'er."

I "got 'er" and handed the receiver to Mr. Blankenship. He began at once.

"Sadie? This is Joe. . . You know. Joe! . . . Why, Joe Blankenship, of course. Who did ya think it was? . . . Oh, I'm pretty good, Sadie. How are you? . . . What's that? Why, yeah. Of course I'm goin' t' school here. . . Yeah, of course I'm out of high school. Went back and finished up last year. . . Say, Sadie, I want to see ya. That's what I came up here for. . . Oh, I dunno,

(Continued on Page 30)

ROOMMATE

(Continued from Page 29)

It began to look like ya wasn't ever comin' back, an' I got to thinkin'. . . Look, Sadie. I'll be over in an hour or so. Soon's I eat. . . What's that? Now, listen, honeybunch, none of that stuff. Remember what I did to Red Goggins that time he tried to get ahead of me. . . All right. An' listen, honey. I got a friend here. Could ya get another gal? . . . Oh, I dunno. Name's Brown. Seems kinda queer but I guess he's all right. . . Yeah. . . All right. . . G'bye."

I dropped into a chair. Well, you could never tell about roommates. Last year, Rudovitch, the Russian, had taught me to play the accordion. I hadn't had much time for studying, but I did get to be pretty good on the accordion.

After all, I thought, what does one come to college for if not to gain a broad outlook on life?

▽ ▽ ▽ ▽ ▽

THE SKEPTIC

I can't accept the yak
As a fact!

J. L.

●

I.

Goethe
Was noethe.

II.

I'm anneud
By Freud.

J. L.

Father—My son sure is broad-minded.

Ditto—That's all my son thinks about too.

—Indiana Bored Walk

●

"That girl's a virtuoso!"

"Don't be silly, she's been married twice."

—Penn State Frosh

●

A genius is a man who can re-write a traveling salesman's joke and get it accepted by the Ladies Home Journal.

●

She: Darling, you aren't sick, are you

He: Not exactly, but I would hate to yawn.

—The Bear Skin

●

Probably the easiest way out of our national financial worries is to give the land back to the Indians and apologize for the condition it's in.

—Pup

●

A BIGHT BLADE OUT—

"Leverer Mary of No. 30 Franklin Street complained to the police yesterday that she had been assaulted by a woman and chased with a knife who lives in the same house."

—Hartford (Conn.) Courant

GOSSIP REARS ITS UGLY HEAD

Can it be true?
About the gnu?

●

REFLECTIONS ON TABLE MANNERS

Decidedly lacking in culture
Is the vulture.

●

HUMAN INTEREST

The morals of Zeus
Were loose.

●

DISILLUSIONMENT

I find people who are trusting
Disgusting.

●

TO THE ETERNAL FEMININE

You strive to be so chaste and pure...
Congratulations, dear, on your
Success in being quite demure
—and immature.

●

You scoff at a minnow
For being mere bait,
But how did you feel
When after your date
There you were danglin'
To wait and to pine,
Left on the hook of
A very strong line?

—Purple Parrot.

Philips & Co.
NEW 1937
ZENITH
Tiger Hotel Bldg. Phone 5666

STULLKEN-ELLIS
24-Hour Service
Complete One-Stop Service
Goodyear & Sinclair Products
Storage by Month or Day
Eighth & Cherry Dial 6767

Once upon a time there were two Irishmen. There are lots of them, now.

“Oklahoma substantially outplayed Colorado in the matter of yardage, rolling up 27 yards to Colorado’s 98.
The writer was biased.

Sign on Theatre—“Mae West in ‘It Ain’t No Sin’.”
Sign on tabernacle across the street: “Tis too.”
—Navy Log

“That means fight where I come from, Stranger.”
“Well, why don’t you fight?”
“Cause I ain’t where I come from.”
—Purple Cow

“Do you college boys waste much time?”
“Oh, most girls are reasonable.”
—Colgate Banter

“Lady, you’ll have to pay half-fare for that boy.”
“But, conductor, he’s only four years old.”
“Well, he looks like a six-year-old.”
“Sir, I have been married only four years.”
“Lady, I’m not asking for a confession. I’m asking for a half-fare.”
—Yale Record

Although the rich old gentleman went to Europe to hunt some old prints, his daughter now goes to Europe to hunt some young prince.


a little bluff
on learned stuff
ho, hum!
it’s not bad fun
somewhat a bore,
but nothing more—
and soon
the section’s done.

a question sheet,
a survey fleet,
and then
a muttered “Damn!”
three hours there
in wild despair,
and lo!
a flunked exam.

FOR ENGLISH 30

Grendel
Was hard to hendel.

SPORT COATS . . .
Junior and Misses Sizes
Plaids - Tweeds - Mixtures
Outstanding Values
\$10.75 - \$16.75
FREDENDALL'S
716-18 Broadway Dial 4310

KAUPP FLOWERS
CORSAGES PLANTS
CUT FLOWERS

Quality At Reasonable Prices
Missouri Theatre Bldg.
Dial 4433

Since 1857
**BOONE COUNTY
NATIONAL BANK**
R. B. PRICE, PRESIDENT

Radio Electric Shop
RADIOS REPAIRED
“Columbia’s Only Authorized Philco Agency”
RADIOS RENTED
1005 E. Broadway Phone 6236



ST. LOUIS
invites you to
Relax

**LINDELL
AT GRAND**

You awake refreshed and full of pep when you spend a night at Hotel Melbourne. Splendidly convenient—close to everything worthwhile—with fine food in the Coffee Shop and the Main Dining Room.

**HOTEL
MELBOURNE**

O. P. GREATHOUSE *Manager*

400 ROOMS from **\$2.50** WITH BATH

PRAYER

Our fathers who are in California,
Hollywood be thy name.
Thy cinemas come,
Thy stills be dumb in Los Angeles as in New Haven.
Give us this day our daily news reel
And forgive us our censorship,
As we forgive those who show double features
before us.
Lead us not into musical comedies,
But deliver us from Wild Westerns,
For thine is the King Kong, the Powell, and the
Gloria Swanson,
For ever and ever, ah me!

—Stanford Chaparral

WHY STUDY?

The more we study, the more we know.
The more we know, the more we forget.
The more we forget, the less we know.
The less we know, the less we forget.
The less we forget, the more we know.

—Penn Punch Bowl.

FOUL PLAY AT COUNTY SEAT—

“Watkins and his brother John are charged with seriously shooting another negro in the lower part of the county.”

—Montgomery (Ala.) Advertiser

Prof: Now, James, what do you derive from my last statement?

James: I can't tell you, sir.

Prof: And why not?

James: Well, you see, sir, I haven't a deriver's license.”

—Froth

Little Boy: Papa, vat's a vacuum?

Second Dialectician: A vacuum is a void, Sammy.

Little Boy: I know, papa, but vat's the void mean?

—Chicago Phoenix.

NO PUNNY PUNT, THIS—

“MAN ENDS LIFE

Seats Self On Curb and Fires
Shoe Thru Heart”

—Headline in Denver Express.



**Discriminating
Travellers
Prefer**

**HOTEL
PRESIDENT**

There's a warmth of greeting—a restful comfort and luxury at Hotel President that makes your visit so much more pleasant. A splendid location; food that spurs the jaded appetite—all at low cost. Garage directly opposite entrance.

PERCY TYRRELL *Managing Director*

450 ROOMS with Bath from **\$2**

“JUST OUT OF THE NOISE ZONE”



KANSAS CITY

BALTIMORE AT 14th ST.

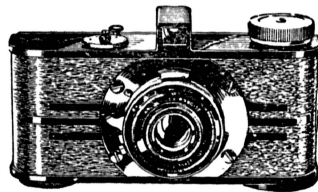
DA-NITE STUDIO

IS

ANNOUNCING THE NEW

argus CANDID CAMERA

Uses 35 mm
motion picture
film. 250 expo-
sures for \$1.50
(800 for \$5.00)



Takes candid
snapshots in
black and white
or in
Natural Color

PRICE \$12.50

A pocket size SPEED camera with f:4.5 anastigmat lens and six speeds up to 1/200 sec 36 exposures daylight loading. clear, sharp prints through enlarging any size desired up to 8" x 10". Revolutionizes picture taking. Argus prints cost no more than other prints of equivalent size.

Complete Line of Eastman and Agfa Films
to Fit the ARGUS---36 Exposures
Priced from 80c to \$1.50

SMITH'S DA-NITE STUDIO
Official Savitar Photographer

PHONE 4369

NEW ADDRESS - - 1010 Broadway - - Next to the Uptown



YOU... *and* a LIGHT SMOKE

It is a Lightness in the smoke that makes people choose Luckies. A rich, clean Lightness in the taste. A smooth Lightness of "feel" in the throat. Puff by puff, a delightful sense of ease. From the choosing of the finest center-leaf tobaccos—to the "Toasting" which removes certain harsh irritants naturally present in all tobacco, every careful measure of Lucky Strike's manufacture is designed to please you more... to offer A Light Smoke of rich, ripe-bodied tobacco.

Luckies—a light smoke
OF RICH, RIPE-BODIED TOBACCO — "IT'S TOASTED"