

# MUSEUM

WINTER 2018 | NUMBER 72

MAGAZINE



MUSEUM OF ART AND ARCHAEOLOGY



UNIVERSITY OF MISSOURI

# Contents



## Mission Statement

The Museum of Art and Archaeology advances understanding of our artistic and cultural heritage through research, collection, and interpretation. We help students, scholars and the broader community to experience authentic and significant art and artifacts firsthand, and to place them in meaningful contexts. We further this mission by preserving, enhancing and providing access to the collections for the benefit of present and future generations.

## Museum Associates

In Support of the Museum of Art and Archaeology

### Officers:

Gary Anger, President  
Sandy Neal, President-Elect  
Tootie Burns, Vice-President

Alex Barker, Executive Vice-President  
Dennis Sentilles, Treasurer  
Valerie Hammons, Secretary

### Directors:

Tracey Atwood  
David Bedan  
Carol Deakne  
Brian Foster  
Ken Greene

Linda Harlan  
Darlene Johnson  
Jerry Murrell  
Christiane Quinn  
Terri Rohlfling

Stacey Thompson  
Kathy Unrath  
Jane Wagner

### Ex Officio Directors:

Bruce Cox, Benton Kidd, and Rebecca Ruppard

### Honorary Directors:

Patricia Atwater and Libby Gill

## Museum of Art and Archaeology

Editorial Office: Mizzou North, Room 2021  
115 Business Loop 70 West  
University of Missouri-Columbia, Columbia, MO 65211-8310  
Phone: (573) 882-3591 Fax: (573) 884-4039  
Visit us online: <http://maa.missouri.edu>

Editorial Staff: Bruce Cox, Editor and Graphic Designer  
Cathy Callaway, Assistant Editor

The magazine is published biannually by the Museum of Art and Archaeology, University of Missouri-Columbia, and is paid for through membership fees, donations, and gift contributions to Museum Associates.

Museum galleries display art and artifacts from six continents and more than five millennia. Lectures, seminars, gallery talks, and educational programs associated with permanent and temporary exhibitions provide a wide range of cultural and educational opportunities for all ages.



The University of Missouri does not discriminate on the basis of race, color, religion, national origin, sex, sexual orientation, gender identity, age, genetics information, disability, or status as a protected veteran. The University's nondiscrimination policy applies to all phases of its employment process, its admission and financial aid programs, and to all other aspects of its educational programs and activities. Further, this policy applies to sexual violence and sexual harassment (forms of sex discrimination) occurring both within and outside of the University context if the conduct negatively affects the individual's educational or work experience or the overall campus environment. Retaliation directed to any person who pursues a discrimination complaint or grievance, participates in a discrimination investigation, or otherwise opposes unlawful discrimination is prohibited.

Any person having inquiries concerning the University of Missouri's application of Title VI of the Civil Rights Act of 1964, Title IX of the Education Amendments of 1972, Section 504 of the Rehabilitation Act of 1973, the Americans with Disabilities Act of 1990 or other civil rights laws should contact MU's Human Resources Services at: (573) 882-4256 or the U.S. Department of Education, Office of Civil Rights.

### Cover

Arthur Schwieder (American, 1884–1965)  
*Still Life*, ca.1933  
Oil on canvas board  
Gift of Mr. George Schriever (65.245)



Missouri Arts Council

ART WORKS.

National Endowment for the Arts

**2** *Seeing Anew: A Reinterpretation of Modern and Contemporary Artworks from the Permanent Collection*

**4** *Electrify!*

**6** *Spotlight*

**7** *Special Exhibitions*

**8** *Events Calendar*

**10** *Missouri Folk Arts Program*

**12** *From the Educator*

**14** *Museum Associates*

**16** *Museum Associates Annual Friends Roster*

### MUSEUM GALLERIES HOURS

Tuesday–Friday: 9am to 4pm  
Saturday and Sunday: noon to 4pm  
Closed on Mondays and University Holidays

### MUSEUM STORE HOURS

Tuesday–Friday: 10am to 4pm  
Saturday and Sunday: noon to 4pm  
Closed on Mondays and University Holidays

### MUSEUM STAFF OFFICE HOURS

Monday–Friday: 8am to 5pm  
Closed on University Holidays

### CLOSED

University of Missouri Holidays and Christmas Day through New Year's Day

Admission is FREE and open to the public  
The Museum is ADA Accessible

# From the Director



Audrey Hepburn once said that “living is like tearing through a museum. Not until later do you really start absorbing what you saw, thinking about it, looking it up in a book, and remembering—because you can’t take it all in at once.”

She was equally right about life and about museums, probably in more ways than she intended. Museums are places of memory, both in the sense of celebrating and preserving our shared heritage and different highlights of the human career and in the sense of being an experience that is often as vivid and meaningful in retrospect as in the moment. Museum experiences stay with you, changing your perception, broadening your understanding, informing your judgment. They open you to other ways of seeing, and to a wider range of ways of responding to the human condition.

That impact is not always immediately apparent. The first time I brought my eldest son to the museum where I worked he seemed barely interested, but years later he recalled every moment, including details I’d never noticed myself. He taught me more than I taught him; museum visits are seeds that may take years to sprout, and many more to bear fruit.

For Hepburn, too, the early experiences she curated as memories and absorbed over time bore fruit. While she became a special ambassador for UNICEF in 1988, she’d begun her involvement three decades before as part of the UN’s 1954 “My Most Unforgettable Child” documentary about children subject to war and strife around the world, informed in turn by her experiences as a child in occupied Arnhem.

In the months to come we’ll be offering a range of Museum experiences for you to curate as memories and absorb over time. *Electrify!* brings a nationally-juried show of contemporary art from emerging young artists with disabilities, each bringing their own unique experiences to their artwork. Longtime Museum friends will recall that we hosted an earlier version of this exhibition a decade ago. *Electrify!* will be on exhibit until shortly after our always-popular “Art In Bloom.” Reinstallation of our permanent collections in the modern galleries will follow, and the return of some familiar works—along with some that haven’t been shown before. While we’ve been excited to offer an inspiring series of special exhibitions in the modern galleries (*Rooted, Revived Reinvented: Basketry in America; The Lasting World: Simon Dinnerstein and The Fulbright Triptych; Electrify!*), we’re also exhilarated at the opportunity to reinterpret the permanent galleries for new audiences.

*Japonisme in Print: Japanese Style/Western Culture* examines the influence of Japanese woodblock prints on western artists, including Mary Cassatt, Henri Rivière, and John Taylor Arms. It’s followed by *Pre-Columbian Pottery from the Museums’ Collections: Ancient Peru*, the first in a planned series of occasional exhibitions showcasing the rarely-seen Pre-Columbian collections of both the Museum of Art and Archaeology and our sister institution, the Museum of Anthropology.

*Page-Turners: Medieval and Early Modern Illustration* considers a different kind of influence—the interplay of image and text in illuminated/illustrated manuscripts, early printed books, folios, and broadsheets.

Each of these focus exhibitions examines artworks from a different perspective, allowing you to experience both the works of art and the Museum in very different ways. You probably can’t take it all in at once. That’s okay—you can come back as often as you like.

And then remember those experiences over the years to come.

Alex W. Barker  
Director

# Seeing Anew

## A Reinterpretation of Modern and Contemporary Artworks from the Permanent Collection

Opening April 21, 2018

Alisa Carlson  
Curator of European and American Art

Since January 2016, two of the Museum's galleries of modern and contemporary art have been sites for a range of enlightening exhibitions of contemporary Afro-Cuban art, European and American portraiture, basketry in America, and works by Simon Dinnerstein with labels written from multiple perspectives. Until mid-March of this year, these galleries will feature yet another distinctive exhibition, *Electrify!*, presenting recent works by young artists with disabilities (see pages 4-5). As this sequence of special exhibitions comes to a close this spring, these two galleries will be rededicated to highlighting extraordinary works from the Museum's permanent collection. Selections of global art from about 1950 to the present will be reinterpreted for a grand reopening on April 21, 2018.

This reinterpretation aims to continue the conversation that these recent exhibitions have sparked, by representing diverse voices and viewpoints. Today, the arts comprise multiplicity and hybridity, representative of manifold cultures, ethnicities, social classes, and identities. Moreover, many artists and arts institutions are challenging the hegemony of privileged perspectives that have dominated the arts for centuries—typically European-American, white, affluent, male-gendered, and heterosexual. Artworks from the mid-twentieth century to today in the Museum's collection contribute to ongoing dialogues about how the arts can both reflect and affect societies, as well as how inclusivity in the art world can further expand. ■



Grace Hartigan (American, 1922–2008)  
*The Gallow Ball*, 1950  
Oil and newspaper on canvas  
Gilbreath-McLorn Museum Fund (2002.27)



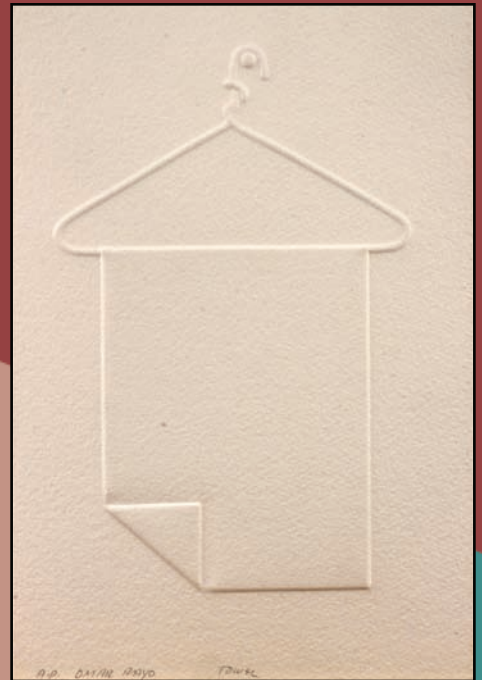
Koo Kyung Sook (South Korean, b. 1960)  
*Markings No. 7-3*, 2007  
Inkjet print on paper  
Gilbreath-McLorn Museum Fund (2008.171)



Kara Walker (American, b. 1969)  
*The Bush, Skinny, De-Boning*, 2002  
 Black pigment on stainless steel  
 Gilbreath-McLorn Museum Fund (2017.15)



Brian Mahieu (American, b. 1964)  
*Snowy Sunset—Cottonwoods—Flooded Swale III*, 2016  
 Oil on canvas  
 Gilbreath-McLorn Museum Fund (2016.11)



Omar Rayo (Colombian, 1928–2010)  
*Towel*, 1970  
 Embossed print on watercolor paper, artist's proof  
 Gift of Julie Bondeson (2016.42)



Richard Burnside (American, b. 1944)  
*Turtles and Snakes*, ca. 1980s  
 Enamel paint on plywood panel  
 Gift of Rex and Mary Campbell (2009.10)

# ELECTRIFY!

Through March 18, 2018

Nationally Juried Exhibition of Artwork  
by Emerging Artists with Disabilities

**Alisa Carlson**

Curator of European and American Art



(Detail) Taylor Bielecki, *I'm Bringing Hell to You*, 2017, Oil on canvas

This winter, the Museum will be the first stop on the national tour of *Electrify!*, an exhibition showcasing the latest artworks by young artists with disabilities. This exhibit has been organized by VSA, the International Organization on Arts and Disability of The Kennedy Center in Washington, DC and sponsored by Volkswagen Group of America. Now in its sixteenth year, this annual juried show spotlights fifteen emerging artists from ages twenty-one to twenty-five. The 2017 winners were selected from a pool of hundreds of applicants by a jury of notable artists and arts educators, curators, and administrators from across the

country.

The stimulating works in *Electrify!* feature a variety of media, from oil painting to photography, film to multimedia installation, found-material assemblage to appliqué fabric. In their explorations of this year's themes to "excite our senses, awaken our curiosity, and electrify our very being," the artists address prescient issues of identity, alienation, grief, reconciliation, acceptance, empathy, and hope. The winning artworks were selected based on "their artistic quality, proficiency, and enlightening or compelling interpretations" of these themes.

## The winning artists are:

Trinity Kai, Little Rock, Arkansas (Grand Prize)  
 Summer Mason, Los Angeles, California (First Prize)  
 Haley Macherone, Portland, Maine (Second Prize)  
 Briana Beck, Chicago, Illinois  
 Taylor Bielecki, Royersford, Pennsylvania  
 Kavin Quiles Bonilla, San Juan, Puerto Rico  
 Rein Brooks, Saint Louis Park, Minnesota  
 Marieke Davis, Gilbert, Arizona  
 Rowan Diloia, Santa Barbara, California  
 Blythe Gurche, Trumansburg, New York  
 Carly Mandel, Saint Louis, Missouri  
 Jillian Santora, Toms River, New Jersey  
 Kendall Schauder, Chicago Illinois  
 Becca Schwartz, Richmond, Virginia  
 Esther Woo, Coppell, Texas

“These young artists challenge us to see the world from a different point of view, and through their personal lens,” said Betty Siegel, Director of VSA. “Their work will spark debate and conversation, and ultimately ignite understanding.” Through their individual expressions, these artists speak to our shared experiences of self-discovery and self-awareness as well as celebrate the power of diversity and inclusivity. ■



Trinity Kai, *Insight*, 2017  
 Gum Bichromate over palladium (Grand Prize Winner)



Haley Macherone, *Hold for Inspection*, 2017  
 Sculpture (Second Prize Winner)



Blythe Gurche  
*Last Light*, 2017  
 Oil on canvas



Summer Mason, *Copper*, 2017  
 Video (First Prize Winner)





A JEAN KENNEDY SMITH ARTS AND DISABILITY PROGRAM



# Spotlight

Benton Kidd

Curator of Ancient Art

## THE GOD SARAPIS

“All good things one could desire are in Alexandria,” wrote Herondas, a poet working in the Ptolemaic capital during its Hellenistic heyday. Herondas did not exaggerate, and the city never failed to impress. It was literally awash in wonders, among which were the Great Lighthouse, the Great Library, the Museum (a research think-tank rather than a gallery), and the “Soma” (royal mausoleum) where the eponymous founder-king rested in lifelike, supernatural stasis, stirring enough to leave Roman emperors weeping at the pathos. Additionally, visitors could see a zoo, exotic gardens, and smaller marvels like coin-operated holy water dispensers. But the spectacle didn’t end there. From a hill in the city’s center rose the sanctuary of Sarapis (Sarapieion), accessed by a grand, 100-stepped staircase. The fourth century CE historian Ammianus Marcellinus marveled at the ostentation of it all, and reported that, among the city’s innumerable temples “pompous with lofty roofs, . . . none were more magnificent than the Sarapieion.” Surrounded by soaring, columned halls filled with statuary and other art, the god’s temple was the centerpiece of the spread, and in it stood his mammoth cult image. Encrusted with jewels and overlaid with precious metals, the glittering, enthroned colossus allegedly left visitors dumbstruck. In the second century CE, the profligate statue drew the disdain of Christian theologian Clement who contemptuously derided it as the “deadliest of illusions.”

Though Clement balked, Sarapis was Alexandria’s most celebrated deity. Visible even from sea, the god’s extravagant, hilltop sanctuary attests to the cult’s importance in a city competing with itself for flashy attractions. Moreover, the Ptolemies realized the necessity for pacifying their unrestful populace (prone to riots) with a god that would appeal to both Greeks and Egyptians alike. Because Greeks had never responded to oriental animal gods, the popular Egyptian Apis bull (a death-and-resurrection god) and Osiris (king of the underworld) were reimagined as one majestic patriarch, who bore an unmistakable resemblance to Zeus and his brother Hades. Sarapis thus emerged as not only a bearded, benevolent father capable of healing the sick, but also a powerful chthonic deity who engendered agricultural fertility and formed a mysterious death-and-rebirth trinity with wife Isis and son Harpocrates. The syncretic new deity was indeed a masterful amalgamation, one-stop religious shopping for all, so popular that a very common name for boys in Egypt thenceforward was “Sarapion.” As the cult of Sarapis grew in popularity, it ultimately took root in Asia Minor, Greece, and Italy. But it was not destined to last. In the late fourth century CE, the wily Christian patriarch Theophilus led an angry mob against Alexandria’s great Sarapieion, where they first assailed the cult statue and decapitated it, and then turned their wrath on the sanctuary itself.



Fig. 1  
Sarapis  
Roman, 2nd c. CE  
Alabaster  
Weinberg Fund (2016.25)



Fig. 2  
Sarapis  
Roman, 2nd/3rd c. CE  
Turkey  
Terracotta  
(65.83)  
[not on display]

The Museum’s alabaster bust (Fig. 1) would have been valuable for its exotic stone, a material also evocative of the origins of Sarapis himself. Small, rudimentary images of Sarapis, most frequently in terracotta, are common finds in the Mediterranean from the Hellenistic period through the third century CE (Fig. 2). ■



# Special Exhibitions

Admission is **FREE** and open to the public  
Museum is ADA Accessible

## Museum Gallery Hours

Tuesday–Friday: 9am to 4pm  
Saturday and Sunday: noon to 4pm

CLOSED on Mondays and  
University of Missouri Holidays  
Christmas Day through New Year's Day



## ***Japonisme in Print: Japanese Style/Western Culture***

Through April 1, 2018

This fourth installment of the focus exhibition series about Japanese printmaking considers the impact of Japanese color woodblock prints on European and American prints from the late nineteenth and early twentieth centuries. Works by Mary Cassatt, Henri Rivière, Pierre Auguste Renoir, Alphonse Mucha, James Abbott McNeil Whistler, and John Taylor Arms are included.



## ***Page-Turners: Medieval and Early Modern Illustration***

Through May 13, 2018

Presenting illustrated narratives and decorated pages, this exhibition will investigate different functions of images as well as the interplay between text and image in Medieval and Renaissance books and prints. The selection of objects will include leaves from illuminated manuscripts, early printed books and folios, and broadsheets. Due to the limitations of such light-sensitive works, they will be rotated once, with a display of new selections starting on March 6, 2018.



## ***Electrify!***

Through March 18, 2018

The Kennedy Center and Volkswagen Group of America have teamed up for the VSA Emerging Young Artists Program, to recognize and showcase the work of emerging young American artists with disabilities, ages sixteen to twenty-five. This traveling exhibition features fifteen selected artists who have created *Electrify!* The artwork in this exhibition is charged with ideas that act as a conduit for reflection on the past, explores the "now," and invokes a future full of possibility and inclusivity.



## ***Pre-Columbian Pottery from the Museums' Collections: Ancient Peru***

April 10–Ongoing

Pottery from ancient Peru is justly celebrated for its beauty and technical craftsmanship, combining elements of naturalism and patterned abstraction with bold imagination. Reflecting a range of cultures and belief systems spanning more than a millennium, this exhibit highlights ceramic arts from the Chavin, Tiwanaku, Moche, Nazca, Wari, Sican and Chimú cultures. Both the Museum of Art and Archaeology and the Museum of Anthropology hold deep and rarely seen collections of Pre-Columbian art.



## ***Seeing Anew: A Reinterpretation of Modern and Contemporary Artworks from the Permanent Collection***

April 21–Ongoing

After two years of special exhibitions, two galleries will be rededicated to highlighting extraordinary works of modern and contemporary art. Selections of artworks from about 1950 to the present will be reinterpreted with an emphasis on diversity represented in the permanent collection. Both familiar favorites and recent acquisitions will be displayed, along with a new section devoted to works on paper.



## ***Studies in Classical Beauty***

May 22–September 30, 2018

By the fifteenth century, a small artistic revolution had begun in Italy, where artists rejected the Gothic style and began recapturing the Graeco-Roman aesthetic in architecture and the human figure. Regardless of subject matter, Gothic artifice ultimately gave way to perfected proportions, classical contrapposto, and stoic bearing. This focus exhibition explores various studies in classical beauty, from the sixteenth to early twentieth centuries.

# Calendar of Events

## February

(Black History Month)

### 2 Friday

#### Art of the Book Club

*An Anthropologist on Mars* by Oliver Sacks  
Brown bag lunch and discussion  
12:15pm, 123 Mizzou North

### 9 Friday

#### MO Folk Arts Program

"Creating and Creative Access for Artists with Disabilities"  
Services for Independent Living Staff  
2:00–3:00pm, Museum Galleries

### 16 Friday

#### Artist Lecture

*Electrify!* Artist Briana Beck  
3:00–4:00pm, European Gallery

### 17 Saturday

#### World Anthropology Day

(Sponsored by the Museum of Anthropology)  
12:00–2:00pm

### 18 Sunday

#### School of Music Gallery Concert

Vocal Chamber Music of the 20<sup>th</sup> Century  
2:00–3:00pm, European Gallery

### 27 Tuesday

#### Annual Music and Art Concert

7:00pm, Sacred Heart Catholic Church  
105 Waugh St., Columbia, MO  
FREE and open to the public  
Museum of Art and Archaeology and  
MU's School of Music's Ars Nova Singers

## March

(Women's History Month)

### 7 Wednesday

#### Curator-Led Exhibition Tour

*Page-Turners: Medieval and Early Modern Illustration* (second installment)  
Alisa Carlson, Curator  
2:00–3:00pm, Focus Exhibition Gallery

### 10 Saturday

#### School of Music Gallery Concert

MU Clarinet Ensemble  
2:00–3:00pm, European Gallery

### 11 Sunday

#### Docent-Led Theme Tour

"Art in Jane Austen's World"  
2:00–3:00pm, Museum Galleries

### 14 Wednesday

#### Museum Lecture Series

"Love, Loss, and Life Eternal: Greek Flower Myths"  
Benton Kidd, Curator of Ancient Art  
5:30–6:30pm, 707 Mizzou North

### 15 Thursday

#### Archaeological Institute of America Lecture (AIA)

"Out of Africa: How Roman Olive Oil Production  
Created Architectural Innovation"  
Lynne Lancaster, Ohio State University  
5:00pm, Reception/5:30pm, Lecture  
101 Swallow Hall

### 16 Friday

#### Art in Bloom

Museum Associates and Florist Reception  
5:30–7:00pm, Gallery of Greek and Roman Casts

Art in Bloom Opens to the Public  
7:00–9:00pm, Museum Galleries

### 17 Saturday

#### Art in Bloom

9:00am–4:00pm, Museum Galleries

#### Museum Lecture Series

"Crowning the Monarch and Cultivating the Soul:  
Flowers in Medieval and Renaissance Art"  
Alisa Carlson, Curator of European and  
American Art  
2:00–3:00pm, 707 Mizzou North

#### Art in Bloom for Kids

Drop-in sessions: 1:00–3:30pm, 2<sup>nd</sup> Floor Lobby

### 18 Sunday

#### Art in Bloom

9:00am–4:00pm, Museum Galleries

## April

### 5 Thursday

#### Art After Dark

7:00–9:00pm, Mizzou North

### 8 Sunday

#### Docent-Led Theme Tour

"Flowers in the Museum"  
2:00–3:00pm, Museum Galleries

### 14 Saturday

#### Slow Art Day

12:00–4:00pm, Museum Galleries

### 21 Saturday

#### Canvas Carnival

MA Fundraising Event  
5:30–8:30pm, Columbia Country Club  
Tickets: \$55/Person or \$100/Couple  
Purchase ticket on-line or call 882-6724  
RSVP by April 18<sup>th</sup>

### 22 Sunday

#### School of Music Gallery Concert

MU Honors Guitar Ensemble  
2:00–3:00pm, European Gallery

## May

### 1 Tuesday

#### Art of the Book Club

*People of the Book* by Geraldine Brooks  
Brown bag lunch and discussion  
12:15pm, 123 Mizzou North

### 6 Sunday

#### Docent-Led Theme Tour

"Writing and Books"  
2:00–3:00pm, Museum Galleries

### 20 Sunday

#### MO Folk Arts Gallery Concert

Traditional Irish Singing with vocalists  
Eimear Arkins and Rowan Elliot  
2:00–3:00pm, European Gallery

## 23 Wednesday

**Curator-Led Exhibition Tour**  
*Studies in Classical Beauty*  
Benton Kidd, Curator  
2:00–3:00pm, Focus Exhibition Gallery

## June

### 3 Sunday

**Docent-Led Theme Tour**  
"Landscapes"  
2:00–3:00pm, Museum Galleries

### 6 Wednesday

**Curator-Led Exhibition Tour**  
*Seeing Anew: A Reinterpretation of Modern and Contemporary Artworks from the Permanent Collection*  
Alisa Carlson, Curator  
2:00–3:00pm, Focus Exhibition Gallery

### 7 Thursday

**Kids Series: World of Art**  
2:00–3:30pm, Museum Galleries  
(Limit two children per accompanying adult)  
Preregistration required by calling 882-3591

### 21 Thursday

**Kids Series: World of Art**  
2:00–3:30pm, Museum Galleries  
(Limit two children per accompanying adult)  
Preregistration required by calling 882-3591

## July

### 1 Sunday

**Docent-Led Theme Tour**  
2:00–3:00pm, Museum Galleries

### 9–13 Monday–Friday

**Summer Camp**  
(Sponsored by the Museum of Anthropology)

### 26 Thursday

**Kids Series: World of Art**  
2:00–3:30pm, Museum Galleries  
(Limit two children per accompanying adult)  
Preregistration required by calling 882-3591

## August

### 1 Wednesday

**Art of the Book Club**  
*Portland Vase* by Robin Brooks  
Brown bag lunch and discussion  
12:15pm, 123 Mizzou North

### 5 Sunday

**Docent-Led Theme Tour**  
"Glass Through the Ages"  
2:00–3:00pm, Museum Galleries

### 9 Thursday

**Kids Series: World of Art**  
2:00–3:30pm, Museum Galleries  
(Limit two children per accompanying adult)  
Preregistration required by calling 882-3591

### 16 Thursday

**Art of the Book Club Lecture**  
"Ancient Luxury Glass"  
Benton Kidd, Curator of Ancient Art  
5:30–6:30pm, 707 Mizzou North

## I'm Back in April!

Reinstalled in the Modern Gallery



Nam June Paik (Korean, 1932–2006)  
*Anten-nalope*, 1996  
Multi-media assemblage  
Gilbreath-McLorn Museum Fund (2000.2)



## Ad Hoc

## Film Series

All films shown at 7:00pm  
Mizzou North, Room 148  
FREE and open to the public

## February

### 9 Friday

**Temple Grandin** (2010)  
Directed by Mick Jackson  
Starring Claire Danes, Julia Ormond, and David Strathairn

## March

### 9 Friday

**Awakenings** (1990)  
Directed by Penny Marshall  
Starring Robert De Niro and Robin Williams

## April

### 13 Friday

**Suddenly** (1954)  
Directed by Lewis Allen  
Starring Sterling Hayden and Frank Sinatra

## May

### 11 Friday

**Name of the Rose** (1986)  
Directed by Jean-Jacques Annaud  
Starring Sean Connery and Christian Slater

## June

### 8 Friday

**Maudie** (2016)  
Directed by Aisling Walsh  
Starring Ethan Hawkes and Sally Hawkins

## July

### 13 Friday

**Death on the Nile** (1978)  
Directed by John Guillermin  
Starring Mia Farrow and Peter Ustinov

## August

### 10 Friday

**Caesar and Cleopatra** (1945)  
Directed by Gabriel Pascal  
Starring Vivien Leigh and Claude Rains



During Richardson's first trip, he explored along several highways, including 13, 36, and 63. He visited Kirksville, Macon, Clark, Gallatin, and Hamilton with brief stops in Columbia, Kansas City, and St. Louis. He filled his notebook with leads and has just begun to fill a one terabyte hard drive with photographic images, video, and audio. When Richardson submitted his first report from the field, he noted, "My initial findings support my belief that traditional arts are alive and well in every pocket of this country. In Missouri, I met with several fantastic artists and community organizers and witnessed some of the most genuine expressions of dedication to sustainable, community-oriented, traditional arts."

Now back at home in New Mexico, Richardson is mapping his next Missouri visit. In March, he will return for scheduled stops to document several individual traditional artists in the designated region. Based on his findings, MFAP will co-host a small exhibition and performances at Missouri Valley College (MVC), a partner in the region, to highlight traditions identified in the project. MVC Professor Claire Schmidt (University of Missouri alum) and MVC Honors College students will work with Richardson and MFAP staff to plan the event.

This first field survey represents an annual commitment, as MFAP continues its work to discover regional traditions; to coordinate public activities, featuring local artists with regional partners; and to bolster the strength and infrastructure of Missouri's folk and traditional arts, artists, and cultural communities. Join us on our website and social media this spring as we answer the questions "Where's Thomas? Who did he meet and what did he eat today?" ■



Richardson interviewed members of the Hands of Friendship Quilt Guild, a Kirksville, Mo., organization established in 1986. Andrea O'Brien (left) and Alice Allinson not only showed off their latest quilts and tools, they also shared stories about the tragic December 2016 fire at the Kirksville Arts Association. The organization's historic building was a total loss, as well as most quilts in a special guild exhibition. Both O'Brien and Allinson lost works in the fire.



Photos: Lisa Higgins and Thomas Grant Richardson

Richardson suspected that one introduction to the local Mexican community in Sullivan County's Milan, Mo., would be through foodways. He not only enjoyed a traditional meal at Taqueria San Marcos but struck up conversation with restaurateur Marcos Osorio about Latino traditions in the area. Richardson also gave Osorio's restaurant top marks—high praise from a food aficionado and resident of Santa Fe, New Mexico.

# From the Museum Educator

Cathy Callaway

This busy fall found some changes in staffing at the Museum, and in specific, in the education department. At the end of September Rachel Straughn-Navarro, the assistant museum educator, took a position at the Spencer Museum of Art at the University of Kansas. Arthur Mehrhoff retired from his position as academic coordinator at the end of October. We miss them both, but know they are enjoying the next chapter of their lives.

The main exhibition this fall was *The Lasting World: Simon Dinnerstein and The Fulbright Triptych*. We were fortunate to have the artist and his wife Renée visit us several times throughout the duration of the exhibition. After the Friday night and Saturday morning activities surrounding the symposium, which focused on Dinnerstein's work, Simon visited the Museum that Saturday afternoon, to the delight of the attendees and presenters at National Museum Day (September 23). As part of the programming, members of the Columbia Weavers and Spinners' Guild displayed some of their creations inspired by works of art in the Museum (see sidebar on page 13).



Artist Simon Dinnerstein explains elements of his painting, *The Fulbright Triptych*.



Students listen during "Blueseum" in the European Gallery.

Archaeology Day was held on October 21. We sincerely thank the participants for making this day interesting, educational, and fun for all attendees.

The Museum also hosted school children for a "Blueseum"—a part of the *Blues in the School* programming—on September 25, with a performance by two blues musicians in the galleries and workshops on music and art the rest of the day.

This year, in conjunction with Daniel Boone Regional Library's *One Read* choice, the Museum co-sponsored the film *Detropia* at the public library. We also hosted a discussion about some "difficult" artwork that confronts social issues, thanks to Alyssa Liles-Amponsah, Associate Director of K-12 Programming and Education Equity, Division of Inclusion, Diversity, & Equity at the University of Missouri, and Nikki McGruder, Regional Manager, Diversity Awareness Partnership—Columbia. The opportunity to confront these issues in a thoughtful way is helpful and healthy for the overall community of visitors to the Museum. ■

# Weavers and Spinners' Guild



Students draw during "Bluseum."



Linda Ridgeway meets ancient Greek Hoplite, Gamal Castile, during Archaeology Day.



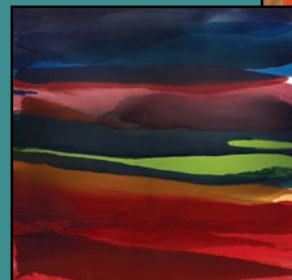
Museum docent, Yolanda Ciolli, creates pottery during Archaeology Day.



Patti Doyle models a lace ruff she created, inspired by the Museum's *Portrait of a Lady*.



Nancy Elliott displays her black bowl inspired by the dotted rosettes in the design from a 2<sup>nd</sup> century BCE Mesopotamian drinking cup.



Jenny Chicone shows her tapestry weaving inspired by Frederic Karoly's painting, *Concerto Grosso Fugue by Bloch-Interpretation*.

# Museum Associates

**Gary Anger**  
President

A big "thank you" to everyone who attended the Museum Associates Annual Meeting on November 3, 2017. I appreciate all who came out to hear about the Associates' accomplishments in 2017: the success of the Paintbrush Ball, the Crawfish Boil, Art in Bloom, the Art of the Book Club, and the two fantastic acquisitions we were able to acquire for the Museum through everyone's fundraising efforts. One of the things that was most exciting to me was the increase in membership of the Associates by twenty-six new "friends" of the Museum. That amounted to a fourteen percent increase in just one year. Another was that the Museum Store was finally fully staffed at the time of the Annual Meeting. I would like to thank Bruce Cox and any of you who helped in the areas of membership and Museum Store staffing.

As usual, there is much to be thankful for and much to look forward to in 2018. We welcome Tootie Burns, Sandy Neal, Carol Deakyne, and Jane Wagner as new Museum Associates Board Members, beginning their first three-year term at the Annual Meeting. We also thank Diana Groshong and Kristy Bryant for their years of service as they retired from the Board. If you run into any of these folks, please share your appreciation for their dedication to the Museum of Art and Archaeology and Museum Associates.

As you know, the Museum Associates typically has one major fundraiser each year. For ten years it has been the Paintbrush Ball. Over the summer, a large and active committee of Board Members and Associates worked together to rethink what the fundraiser might look like beginning in 2018. As a result, the Paintbrush Ball has been retired and a new fundraiser, the **Canvas Carnival**, is being developed and will be unveiled on **April 21, 2018**, from 5:30–8:30pm. The event will be held at the Columbia Country Club. The Canvas

Carnival will be a less formal event than the Paintbrush Ball with the dress code being cocktail attire. We plan to serve heavy hors d'oeuvres at a variety of food stations in the hall and will have two cash bars in operation throughout the evening. Our fundraising emphasis this year will be in three significant areas for the Museum:

- Art Education
- Art Conservation
- Exhibition Funding

We plan to have three information stations staffed by docents and/or Museum staff explaining each of the areas and answering any questions you might have about the importance of each. Unlike in prior years, we will not be funding an acquisition in 2018. Our focus will be completely on raising funds in these three areas which the Museum has identified as needing financial support. We also plan to have a fantastic silent auction that will be exclusively dedicated to artwork. A painting of the event, painted that evening will be the only live auction item. This event will encourage socializing and will include several games and raffles. So, save the date and come planning to have a good time. Don't forget your wallets either—this will be the primary fundraiser for Museum Associates in 2018, and I look forward to seeing you there.

Once again, we are planning to hold Art in Bloom from March 16–18, 2018. Last year we hosted approximately 2,000 attendees, and the reviews were universally positive. Please plan to come this year, and bring some friends. The Museum Associates sponsored Sketching Group has been meeting since the summer and has been successful enough to consider establishing a second group. Watch for details and remember you don't have to have "talent" to participate. The Art of the Book Club has continued to engage individuals



The Annual Crawfish Boil under the canopy at Mizzou North in October, 2017.



Attendees filling their plates at the Annual Crawfish Boil held in October, 2017.





The Art of Book Club held a book discussion led by artist Simon Dinnerstein, who chose the book *Stoner* by John Williams. The novel's main character was educated and taught at MU.

with their book choices. Their selections directly correspond with exhibitions in the Museum and register with a variety of interests and backgrounds. We welcome your participation and hope you'll join the book club.

I want to personally thank our "Friends" for giving the Museum and Museum Associates your financial support and your enthusiasm in spreading the word about all that the Museum has to offer. For the first time, we will begin listing in the Winter edition of the *Museum Magazine* the names of those active members in Museum Associates. The Museum Associates Board of Directors hopes you will enjoy seeing your name and those of your friends listed as our "Friends." Remember, the Museum of Art and Archaeology is YOUR Museum. See you at an event or exhibition opening soon! ■

# Museum Associates

In Support of the  
Museum of Art and Archaeology

*Become a Friend of the Museum!*

<http://maamuseumassociates.org/>



## Museum Sketching Group

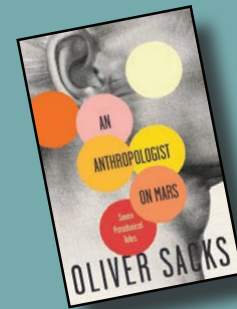
*Talent is not a requirement!*



Third Tuesday of each month  
10:00-11:30am  
Gather in the first floor lobby

Informal monthly drop-in group meets to sketch various artwork throughout the Museum. Drawing supplies and collapsible stools available.

# Art of the Book Club



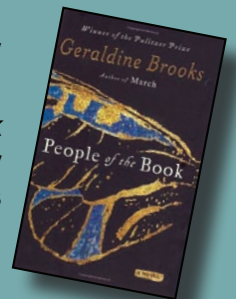
## February Selection

*An Anthropologist on Mars*  
by  
Oliver Sacks

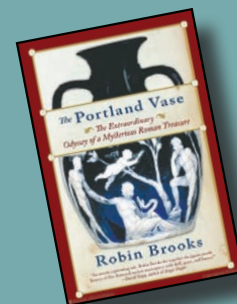
Chosen to accompany the *Electrify!* exhibition, this book explores seven paradoxical tales of neurological disorder and creativity. Sacks' subjects include an artist who loses his sight, a surgeon with Tourette's syndrome, and an autistic professor of animal science. ■

## May Selection

*People of the Book*  
by  
Geraldine Brooks



This novel was chosen to accompany the focus exhibition *Page Turners: Medieval and Early Modern Illustration*. The story describes the quest of a rare book conservator to unlock the mysteries of a Jewish illustrated manuscript, the "Sarajevo Haggadah," produced in Spain over 600 years ago. Follow the manuscript's travels through history and the people involved in preserving it. ■



## August Selection

*The Portland Vase*  
by  
Robin Brooks

An enigmatic and astonishingly beautiful piece of Roman cameo glass made over 2,000 years ago, "The Portland Vase," has passed through the hands of a stunning cast of characters. Housed in the British Museum since 1810, the vase was shattered into 200 pieces in 1845 and has undergone three reconstructions to restore it to its original beauty. ■



# Museum Associates Friends Roster

Friends with active membership as of December 31, 2017

## Life

Joanne Berneche  
William and Jane Biers  
Linda Cupp and Bill Bondeson  
Vincent and Françoise Brown  
Lynette Feeney-Burns  
Mary Louise Bussabarger  
Rex and Mary Campbell  
Harry B. Cohen  
Virginia Crawford  
Dr. and Mrs. Donald Creighton  
Bernice Fane  
Douglass Freed  
Robert Haber  
Linda Keown  
Jean A. Mann  
Emma Jean McKinin  
Mr. and Mrs. Edward Merrin  
Marguerite Mitchel  
David R. Nalin  
Richard Nalin  
David T. Owsley  
W. Tjark Reiss  
Linda Schildkraut  
Mr. and Mrs. David Soren  
Frank Stack  
Herbert H. Sternlieb

## Herakles Guild (\$10,000 and above)

Beau Aero and Alfredo Mubarah  
Robert and Maria Barton  
W. R. Benson  
Nancy D. and James Cassidy  
John and Pat Cowden  
Jeanne Duncan Daly  
Glenn and Harriet Flanders  
Gerald and Linda Hazelbauer  
Linda Keown  
Alex and Robin LaBrunerie  
Olive Gilbreath McLorn  
Dennis Sentilles  
Saul and Gladys Weinberg

## Bellerophon Guild (\$1,000 Level)

Ralph and Sue Hoevelman  
Linda Lyle  
Ann and David Mehr

## Perseus Guild (\$500 Level)

David and Nancy Bedan  
Stephen and Nancie Hawke  
Alice Landrum  
Mark and Carol Stevenson  
Herbert and Lynn Willbrand

## Theseus Guild (\$250 Level)

Kathryn Allen  
Nancy Cassidy  
Thomas and Joell Doneker  
Richard Edging  
William Fisch  
Meta George  
Kee and Diana Groshong  
Tim and Linda Harlan  
Bruce Harry  
John and Karen John  
Darlene Johnson  
Arthur Kopta  
Aaron and Nikki Krawitz  
Charles and Jan Swaney  
Barbara Wallach  
Michael Zurovski and Susan Szewczyk  
Steve Zweig and Susan Even

## Jason Guild (\$100 Level)

David Allen and Barbara Rothschild  
Gary and Nancy Anger

Alex and Lana Barker  
Drs. William and Jane Biers  
Brad and Vicki Boyd-Kennedy  
Christina Bramon  
Richard and Tootie Burns  
James and Anne Campbell  
Yolanda Ciolli and Mike Trial  
David and Ellen Clithero  
Drs. Gary and Patricia McIntosh Coles  
Robert Conrad and Stacie Schroeder  
David and Joanne Cowan  
Deborah Daniels  
John Adams and Carol Deakyne  
Kenneth and Charlotte Dean  
Ron and Carole Sue DeLaite  
Dorinda Derow  
Dr. Robert Doroghazi  
Kathleen Ehrhardt  
Brian and Lerke Foster  
Klaus Gerhardt  
Kenny Greene  
Carol Grove  
Valerie Hammons  
Veralee Hardin and Joe Phillips  
Mark and Ingrid Headley  
Richard and Anne Hessler  
Haskell and Susan Hinnant  
Tim and Kimberly Hoffman  
Darlene Huff  
Richard and Pamela Huffstutter  
Robert and Lisa Jerry  
Larry Kantner and Carl Morris  
Steve and Mari Ann Keithahn  
Linda Keown and Rick Crow  
Alex and Robin LaBrunerie  
Ferd and Ann LaBrunerie  
Scott and Mary Beth Litofsky  
Doris Littrell  
Desiree Long  
L. W. and Kathryn Lucas  
Jennifer Market  
Mr. and Mrs. Greg Matti  
Michael and Barbara Mayer  
Bill and Jan Mees  
Mark and Margaret Milanick  
Mark and Holly Monroe  
Dr. H. J. Murrell  
Sandy Neal  
Boyd O'Dell  
John and Vicki Ott  
Margaret Peden and Robert Harper  
Marilyn June Pfefer  
Sallee Purcell and John Murray  
James and Christiane Quinn  
Marcus Rautman and Susan Langdon  
Tom and Ellen Rippetto  
Cassandra Rogers and Lisa Higgins  
Chris and Terri Rohlfling  
Vicki Russell and Henry Waters III  
Don and Sally Schilling  
Yvonne Skouby  
Andy and Kandis Smith  
Gary L. and Carol E. Smith  
Stephen and Anne Stanton  
Jo Stealey  
Paul and Helene Tatum  
Wyatt and Stacey Thompson  
Herbert and Sue Tillema  
Jane Wagner  
Spring Walton  
Dorothy Watson  
Bette Weiss  
Vicky Wilson  
Kimberley Wolfe and Charlene McGrath  
Thomas L. Yancey

## Family (\$60 Level)

Jim and Luann Andrews  
Lance and Sharon Beshore  
Andrew and Cynthia Beverley  
Françoise and Joseph Bien  
Robert and Cokie Blake  
Julie Bondeson  
Jeff and Jane Brotemarkle  
Ken and Colleen Butler  
Cathy Callaway and Robert Seelinger  
Ben and Brooke Cameron  
J.J. and Alisa Carlson  
Reba Cassin and Hilary Baumann  
Suzanne Choi  
Scott Christianson and Ava Fajen  
Bruce Cox and Leland Jones  
Julie Deering  
Denny and Martha Donnell  
James and Judith Elliott  
Wendy Evans  
Norma Fisk  
A. Karina Galve  
Steve and Lynn Gentzler  
Scherrie Goettsch and Steve Weinberg  
Philip Harrison  
William and Susan Heggarty  
Jim and Mariann Holstein  
Lynn and Patricia Hostetler  
Andrea Quiroz Jira  
April Karlovit and Sam Stowers  
Nicholas and Julie Kalaitzandonakes  
Roy and Mary Beth Kletti  
Donald and Jolynn Laird  
David and Janna Lancaster  
Darvin and Veronica Lemme  
Andy and Wendy Lister  
Stephen and Martha Matthews  
Doyle and William McKenzie  
Bruce and Virginia McMillan  
Walt and Susan Melton  
J. Wayne and Patricia Merrill  
Stephen and Joan Mudrick  
John and Joni O'Connor  
Barbara Overby  
Tom and Alice Payne  
Matt and Kate Pitzer  
Patricia and Otho Plummer  
Michael Podgursky and Cheryl Thomas  
Alex Prelas  
Jerry and Jill Price  
Richard and Alice Robinson  
Jim and Kitty Rogers  
Gilbert and Donna Ross  
Marjorie Sable and George Smith  
Henry and Jackie Schneider  
Oliver Schuchard and Daryl Rogers  
Nancy and Tom Schultz  
Bill and Jolene Schulz  
Mike and Sarah Seat  
Jonathan Sessions and Carrie Gartner  
Arlyn and Ruth Storvick  
Lili Vianello and John Shrum  
Dan Viets and Sheila Dundon  
Jeff Viles and Rebekah Schnell  
Paul Wallace and Robin Remington  
Ken Wilhelm and Nancy Gerardi  
Ted and Pat Wills  
Dennis and Ruth Wright

## Individual (\$40 Level)

Frances Beach  
Sally Beattie  
Jim Bishop  
Richard B. Caple  
Amy Chow  
Donna Dare

Darla Doubet  
Jennifer Folliard  
Mary Franco  
Denise Gebhardt  
Ann Gowans  
Genny Jacks  
Brenda Jones  
Helen Katz  
Beverly Keiper  
Nancy Kirtley  
Ann Korschgen  
Suchwon Lee  
Allyn Lord  
Terry Merritt  
Sabra Meyer  
B. Peters Montgomery  
Farah Nieuwenhuizen  
Stuart Palonsky  
Malissa Peacock  
Merryn Pinch  
Todd Schachtman  
James Schell  
Kathleen Warner Slane  
Barbara Smith  
Sarah Spence  
Karen Touzeau  
Teresa Villagra  
Marcia Walker  
Pam Weagley  
Jeff Wilcox  
Melissa Williams

## Senior Individual (\$35 Level)

Andrea Allen  
Stephen Archer  
Carolyn Bening  
Betty Bluedorn  
Ernest Boughton, Jr.  
Anne Braisted  
Suzanne Burgoyne  
Cynthia Campbell  
Judith Clark  
Lana Costanzo  
Camilla Crist  
Caroline Davis  
Patti Doyle  
Kathy Edes  
Sue Gish  
Dorothy Harrison  
Carol Headley  
June Ann Humphrey  
Pam Humphreys  
Irene Karns  
Carol Lane  
Lois Long  
John Marquardt  
Ruth Miluski  
Charlene Nickolaus  
Laura Perez-Mesa  
Jill Raitt  
Alice Reese  
Dr. Frances E. Reynolds  
Linda Marian Ridgeway  
Carole Riesenberg  
Julie Rose  
Barbara Rothenberger  
Barbara Schneider  
Rebecca Schuppan  
Rebecca Smith  
Charlotte Stadford  
Dee Dee Strnad  
Jennifer Wax

## Student (\$20 Level)

Chelsey Miles  
Leslie Touzeau

# Canvas Carnival

**Saturday, April 21, 2018**

**5:30–8:30pm**

**Columbia Country Club**

**Ticket Prices**

**\$55/Person**

**\$100/Couple**

**RSVP by April 18, 2018**

- Silent Art Auction
- Games and Raffles
- Live DJ
- Heavy Hors d'Oeuvres
- Cash Bar

Tickets may be purchased on-line at  
<http://maamuseumassociates.org/Events.html>

**Cocktail Attire Requested**

## A Fundraising Event

# Museum Associates

In Support of the  
Museum of Art and Archaeology



Gary and Nancy Anger  
David and Nancy Bedan  
Richard and Tootie Burns  
John and Pat Cowden  
Brady and Anne Deaton  
Tim and Linda Harlan

Linda Keown and Rick Crow  
Stacie Schroeder and Bob Conrad



The Physician Investor Newsletter  
Robert M. Doroghazi, MD





Museum of Art and Archaeology  
Mizzou North, Room 2021  
115 Business Loop 70 West  
Columbia, MO 65211-8310



Mid-Missouri florists design and create fresh-cut floral arrangements inspired by the artwork and artifacts found throughout the Museum's galleries.

MU's Missouri Historic Costume and Textile Collection will display costumes with floral themes. These costumes will be accompanied with floral head pieces and jewelry created by students from MU's Weddings Floral Design course.

# 2018 Art in Bloom

March 16-18, 2018

Experience Art and Flowers  
in a New Way!

**FREE** and Open to the Public

## Friday, March 16<sup>th</sup>

MA Members and Florist Opening Reception  
5:30pm, Gallery of Greek and Roman Casts

Art in Bloom OPENS to the Public  
7:00–9:00pm, All Galleries

## Saturday, March 17<sup>th</sup>

Art in Bloom, 9:00am–4:00pm, All Galleries

Art in Bloom for Kids (Drop in and create!)  
1:00–3:30pm, 2<sup>nd</sup> Floor Lobby

## Museum Lecture

"Crowning the Monarch and Cultivating the Soul:  
Flowers in Medieval and Renaissance Art"

Alisa Carlson, Curator of European and American Art  
2:00–3:00pm, 707 Mizzou North

## Sunday, March 18<sup>th</sup>

Art in Bloom, 9:00am–4:00pm, All Galleries