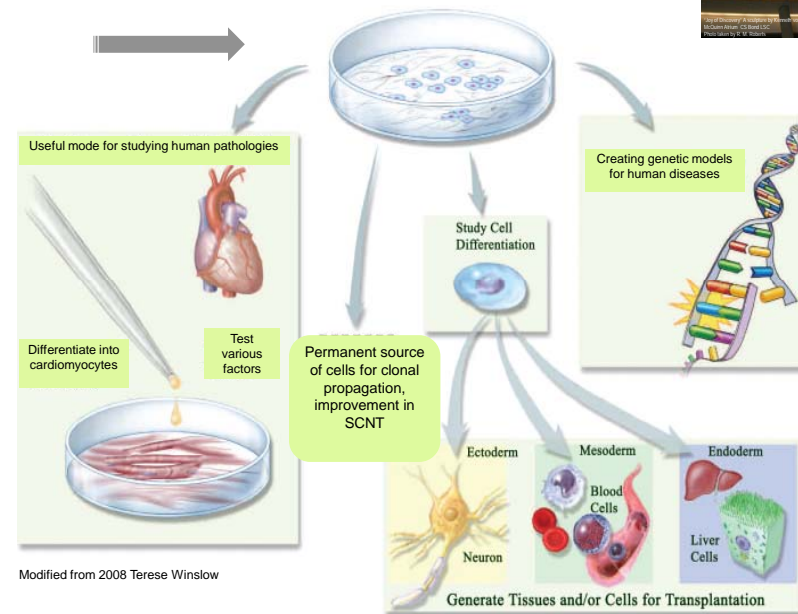
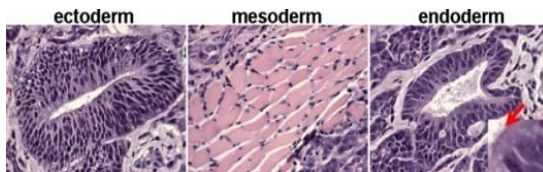
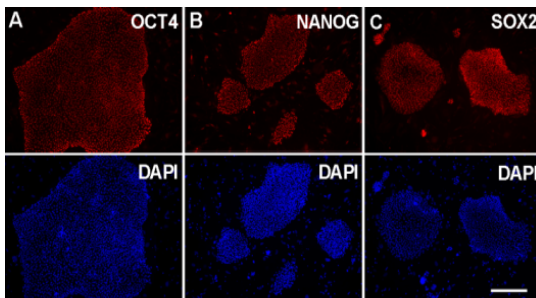
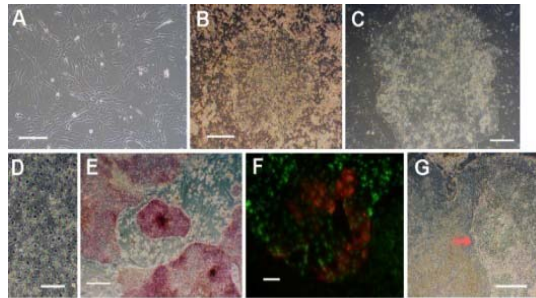
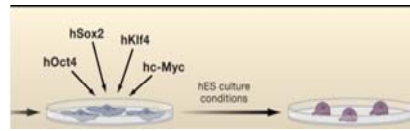


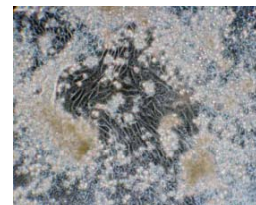


# Porcine induced pluripotent stem cells (piPSC) for expanding the use of swine in biomedical research

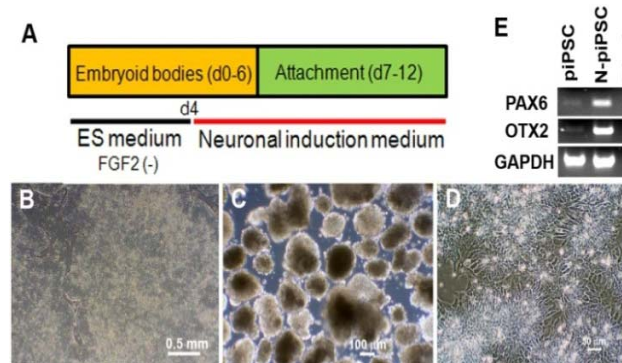
Toshihiko Ezashi, Bhanu Prakash V.L. Telugu and R. Michael Roberts  
 Christopher S. Bond Life Sciences Center, University of Missouri-Columbia



Modified from 2008 Terese Winstow



α-myosin heavy chain +



## Collaborators using our piPSC for basic and translational research

- Drs. Kaplan & Dean, University of Louisville
- Dr. MacLellan, UCLA School of Medicine
- Dr. Niemann, Institut für Nutztiergenetik
- Drs. Hansen & Cooney, Texas Heart Institute & Baylor College of Medicine
- Dr. Joseph Wu, Stanford University School of Medicine
- Dr. Sean Wu, MGH/Harvard University
- Dr. Fahrenkrug, University of Minnesota

**Acknowledgements:** Supported by MO Life Sciences Trust Fund Grant 00022147 (T.E.) and NIH HD 21896 (R.M.R.). We thank Dr. Randall Prather for providing porcine embryonic fibroblasts.