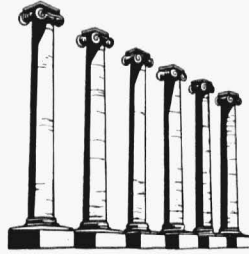


# MISSOURI ALUMNUS

NOVEMBER 1966





# MISSOURI ALUMNUS

November, 1966  
Vol. LVI, No. 2

Published by the  
University of Missouri  
Alumni Association

President  
Marvin D. McQueen, '36  
St. Louis, Mo.

Executive Editor  
Guy H. Entsminger, '49  
Assistant to President for  
University Development  
and Alumni Activities

Class Notes Editor  
Dorothea Smith, '52

Consultants  
Paul L. Fisher, '41  
Professor of Journalism  
University of Missouri  
Columbia, Mo.

Barks Publications, Inc.  
818 Olive St.  
St. Louis, Mo.



- 2 A Note from the Chancellor**  
Beginning a new feature in which Chancellor Schwada keeps in touch.
- 4 Around the Columns**  
Maps and markers help students and visitors find their way.
- 8 'Welcome, High School Seniors and Parents'**  
Prospective students invade the campus to learn about the University.
- 12 Band and Parents' Day**  
An occasion on which 6,500 special guests came to Columbia.
- 16 'To Thine Own Self Be True'**  
The story of a first-rate teacher who became an associate dean.
- 20 'Greatest Tricycle Race of Them All'**  
The Indianapolis 500 was never like this.
- 24 The Formative Years**  
Elizabeth Taylor Thompson writes about the University that "kindles the affections of the middle-aged."
- 28 Alumni Leaders Return to Campus**  
Interested alumni visit M.U. to see how they can help to enlarge and enrich the program of the University.
- 31 Class Notes**
- 47 Alumni Meet in Los Angeles**
- 48 Letters**

## About the Cover:

She took part in the 'Greatest Tricycle Race of Them All' and ate the grape that was buried in a pie-tin of pudding.

**BACK COVER:** Markers that are being paid for by the Alumni Association will point the way to more than 50 of the buildings on the M.U. campus.

The *Missouri Alumnus* is published monthly except July, August and September by the University of Missouri Alumni Association, 308 Jesse Hall, Columbia, Missouri 65201. Second class postage paid at Columbia, Missouri, and at additional mailing offices. Active membership \$4.00 a year. Life membership \$80.00.

## Campus Commentary

By BUS ENTSMINGER

### **Alumni Board Attends Seminar**

Words alone cannot express the gratitude your alumni staff has for the devoted efforts of those of you who give so freely of your valuable time in counseling and rendering service to your alma mater. It is especially gratifying each year to have over 200 alumni leaders gather on this campus for even a brief meeting with the Alumni Board members and University administrators.

It is more significant that this year the Alumni Board held a two-day seminar designed to better acquaint themselves with the institution they serve and to study ways of moving the Alumni Association toward its stated objectives. Alumni leaders came from Washington, D. C., Chicago, Des Moines, Miami, Minneapolis, Tulsa, Houston and Memphis.

The University of Missouri is undergoing the greatest changes of its entire history. It has become one of the great institutions of the modern world. To a large degree, it has attained that position because of the successes and accomplishments of its product, the alumni.

M.U. is truly a university in transition. This transition is to be respected and desired, and not to be feared. Your pride can be amplified through the knowledge that this transition period prepares the way for even greater accomplishments.

It is the leadership of the Alumni Association, whose time and effort is invaluable, which maintains the lines of support and communication between a changing institution and her sons and daughters, regardless of their geographic residence.



### **Sad Tale Wherein Rehabilitation Fails**

The Jayhawk is a tough bird to convert. I have had a recent experience that may be of interest to some of you.

Not long ago there moved into Columbia an avid graduate from the Valley of the Kaw, a 1951 K.U. graduate named Ed Perry. I, along with other good Tiger boosters here, took it upon ourselves to rehabilitate this misguided youth who had selected the Kansas hills of Mt. Oread over the Hinkson valleys of M.U. We had the feeling that normal progress was being made.

I soon learned that Mr. Perry had vowed to himself years ago

---

### **Praise for Mizzou's Stress on Teaching**

You should know that the Office of Institutional Research in Washington, D. C., has lauded your University. In a recent publication they pointed out that the University of Missouri was one of the pioneers in recognizing the need for continued quality teaching regardless of the increased demands for research and service. For 10 years Mizzou has conducted in-service teacher training programs in an effort to stay "out front" in the teaching field.

never to fly in a single-engine airplane. Since I have flown a goodly number of hours, using my private license to some degree in visiting alumni clubs, I extended an invitation to Ed to go flying with me, in hopes that his acceptance would imply a sense of trust and faith in the Tiger. Ed not only accepted the invitation, but seemed eager to do so. I was convinced that our "brain-washing" technique had been successful when he agreed to meet me at the airport for an orientation ride.

I was unprepared for the spectre which presented itself. Regaled in rather unusual flight paraphernalia, as the picture shows, Perry appeared as a testimonial of complete distrust and absolute lack of faith. You will note the flight suit, with crash helmet and goggles, the umbrella for quick parachute protection, the rabbit's foot for good luck over the right pocket, the horseshoe for more of the same over the left pocket, a bottle of Seagram's best for nerve tonic, a large pail for sickness emergency, and finally, to add insult to injury, a very thick book entitled *How to Fly and Pray*.

Since that episode, I have given up all attempts to rehabilitate this "Hawker." I can only hope that all of us Missouri Tigers are as steadfast to Tigerland as he is to Jayhawk Country.



## A Note from the Chancellor

For some time I have been probing for a good way to keep in touch with you more closely than is possible through our unfortunately infrequent personal visits. Recently Marvin McQueen, national alumni president, suggested that I include in this magazine a letter to you on matters of interest to alumni and of importance to your University. Marv's suggestion—and his energetic follow-up—is just one more example of the many ways in which he personally contributes to alumni and university development, and is another evidence of the fine support and careful thought provided by many of our alumni friends. I welcome his suggestion and look forward to talking with you through the pages of the *Alumnus* as well as seeing many of you each year. I hope this occasional letter will provide, between us, a continuing contact that may help you gain a fuller understanding of your alma mater.

Let me tell you in this initial letter a little about the major event of each fall, the arrival of our new freshman class. A feeling of sharp autumnal excitement always accompanies the appearance of our first-year students on campus. This excitement is ours as well as theirs as they view the

prospects of a university education in Columbia.

I am impressed with the high quality of the incoming freshman, their enthusiasm and their deep anticipation of this new experience. They are fine young people, and I can safely say that I believe they compare most favorably with those who have come here in earlier times. I have no doubt that they outshine those of us who first approached the university several years ago.

### **The University has not lost its concern for the welfare of the individual**

I have searched my own experience and that of many others to find a way to give the entering students some picture of our University. Our time for this introduction is brief, since students, faculty and administrators are inundated at the opening of each school year. In the last two years, I have taken the occasion of a general convocation of new students to talk with them quite frankly as young adults who are properly concerned with an education and with their future. Some of these remarks to them may be of interest to you. If you have reactions or suggestions for change, I would be pleased to hear from you. I know that many of

these young people are your sons and daughters, and I hope you share with me the feeling that these maturing citizens are quite capable of understanding a direct discussion of their role here and are in turn willing to join with both faculty and administration in attaining what we know are our common educational objectives.

One fear—and a normal one—of many of our new students and their parents is related to the obviously large size of this campus, where some 18,500 students are enrolled this year. This is a valid concern: quite a few of our students come from communities half the size, or less, of our student body, and so may possibly be unnecessarily fearful of a campus as large as a small city. I have tried each autumn to impress upon these students that our university has not lost its concern for the individual student's welfare, nor has it lost its concern for finding ways to bring students, faculty and administrators closer together. There are many ways in which we hope to reduce the student's feeling of being suddenly immersed in a very large organization, and I may say with considerable pride that I believe we have done a great deal to give the new student a feeling of participation and assurance. I pointed out to the freshmen and their accompanying parents that they will be living with small groups in dormitory "houses" or other accommodations. They will have a choice of an academic program which will place them in a school or college which has far fewer students than many of our high schools, and they will work most closely and continuously with even smaller groups of majors in particular departments and classes. Thus their opportunities for developing both warm friendships and intellectual companions are many. At the same time, these students have educational and cultural choices available only in a large university.

### **Greater freedoms call for a higher level of personal responsibility**

Another of the principal challenges which confronts college freshmen is the fact that they have much broader opportunities and may make much wider choices than in high school. At the same time, they realize that



these greater freedoms carry with them considerably increased responsibilities. If they accept the freedoms and assume the responsibilities, they will be rewarded by their own self-satisfaction and, even more importantly, the respect of their fellow students, their parents, their teachers, and the university community. So, while we consciously release some restraints which formerly existed, we in turn assume that students accept a higher level of personal responsibility for their individual actions. I believe that the vast majority of our students have accepted these new responsibilities with real understanding and with beneficial results. After all, these young adults must gain experience in individual responsibility if they are sure-footedly to assume the positions of leadership and intelligent participation in the business organizations, the communities and the many other social structures of which they will be a part after graduation.

**A vital part of one's education comes from rubbing shoulders with others**

I have wondered in recent years if we may not have too heavily pressed upon our students the work aspects of a university and may, as a result, have given inadequate attention to other aspects of their development. This last fall I told our students that "while you are here for the purpose of securing an education, I believe it equally important that you gain the knowledge, experience and understandings which are not directly related to that acquired in the classroom or library. We are deeply interested in your development as an individual and as a responsible citizen. We are vitally concerned with your adjustment, not only to a complex university but also to a complex world. So, while a college or a university is a place for education to be gained in the classroom, library and laboratory, it is also a place for the vital part of one's education which comes from meeting and rubbing shoulders with many students and teachers. The development of friendships, and the gaining of an understanding of others and how to work and to cooperate with them, are important and lasting parts of your development and may well be as valuable and enlightening a

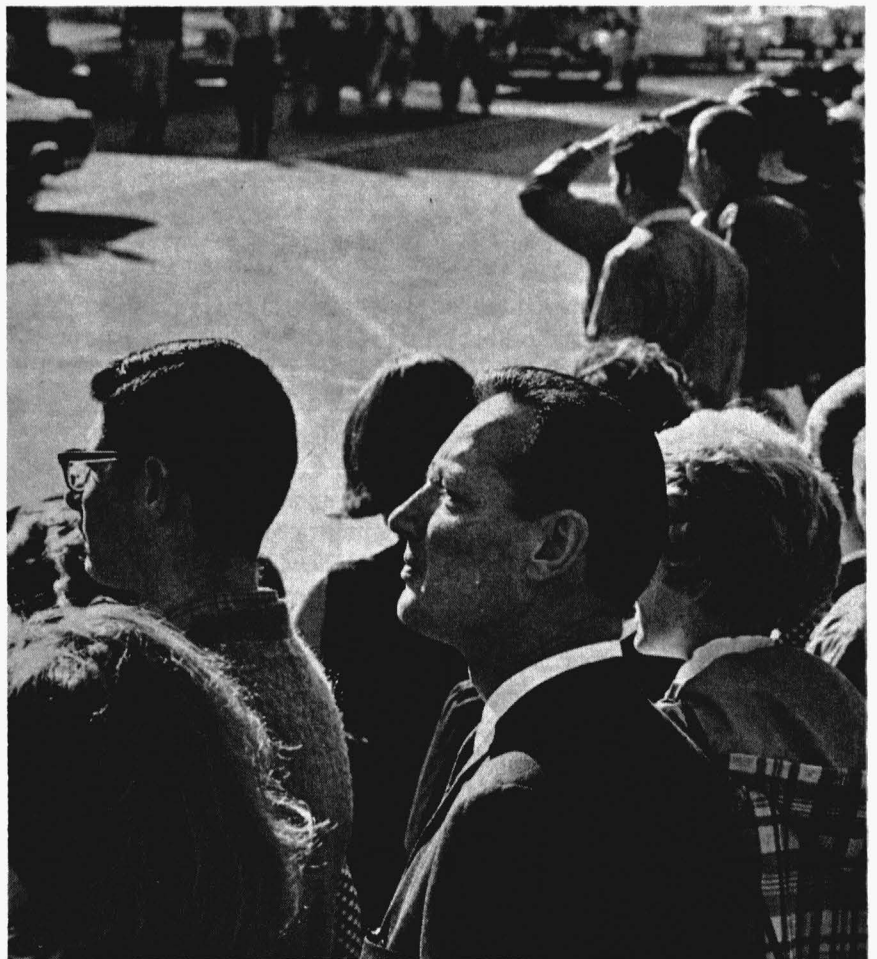
share of your college experience as any other."

Of course, I also pointed out to our new students that while we respect their individuality and the concept of individual responsibility for their actions, they must have due regard for the maintenance of the university as an educational institution. They must learn that those who do not acquire and practice the principles of sound citizenship cannot be with us very long.

These represent some of the thoughts I passed on to our bright and eager freshman class; and, if I assessed the response correctly, I believe both they and the parents who were with them were in broad agreement. Certainly we must do all we can to orient new students to

the nature, the opportunities and the responsibilities of a large university, and I am sure we will continue to find ways to improve upon our past efforts in this direction.

It is a pleasure to communicate with you through the *Alumnus*, though I hope to visit with you personally on many occasions. I know you like to stay in close contact with your university, and we will welcome you on a return visit to the campus at any time. Again let me say that we rely heavily upon your support, your advice and your continued feeling of warm respect for a school which we hope can increasingly fill a useful role in the education of many young people as well as develop more fully its position as an educational leader in the state and nation.



Chancellor Schwada and students view a parade.

## AROUND THE COLUMNS . . .



Don Faurot

### **Faurot in Homecoming spotlight**

Don Faurot, the football mastermind who pioneered the explosive Split T formation back in 1941, will be honored in advance of his retirement as athletic director, and the '41 and 1966 graduating classes will hold their silver and golden anniversary reunions in Homecoming activities at the University Nov. 4-5.

Faurot will retire next June 30, when he reaches the mandatory retirement age of 65 for administrators. His successor will be Tiger football coach Dan Devine.

The 1941 class reunion will be part of the Faurot tribute as members of that season's team gather for the various events. Faurot coached the '41 eleven to the (then) Big Six title. The team was unbeaten in conference play. The '66 eleven also was a champion, of the old Missouri Valley Conference. Former gridders under Faurot, as well as teammates of his own Tiger teams of 1922, 1923 and 1924, have been invited to the Homecoming.

Activities will kick off Friday evening, Nov. 4, with a supper, pep rally and entertainment in Brewer Field House. A parade the next morning begins the windup day of events. Sharing the Homecoming spotlight on

Nov. 5 will be the Big Eight Conference game between the Tigers and the always-tough University of Colorado Buffaloes and the crowning of the 1966 Homecoming Queen. Kick-off time, as usual, at Memorial Stadium in Columbia is 1:30 p.m. Mizzou's record against Colorado is 21 victories, 6 defeats and 3 ties. Defending champion Nebraska, Colorado, Oklahoma and Missouri were rated the top teams in the conference in pre-season polls and forecasts.

The '66 Homecoming Queen and her attendants will be honored at half-time of the Tiger-Buffalo game. The intermission show will feature the "Marching Mizzou" Band under the direction of Alexander Pickard, assistant professor of music and director of bands.

This year's Homecoming theme is "Buffalo Bonanza." Student house decorations and floats will be designed accordingly.

The Broadway comedy "Barefoot in the Park" will be added to the festivities this fall. It has been hailed as "one of the funniest and one of the most successful stage comedies of our time." The touring Broadway show will be given at 8 p.m. (CST) in Jesse Auditorium. A dance open to all attending Homecoming will be held the same evening in Rothwell Gymnasium. A major band will provide the music. The new Homecoming Queen will appear at both events.

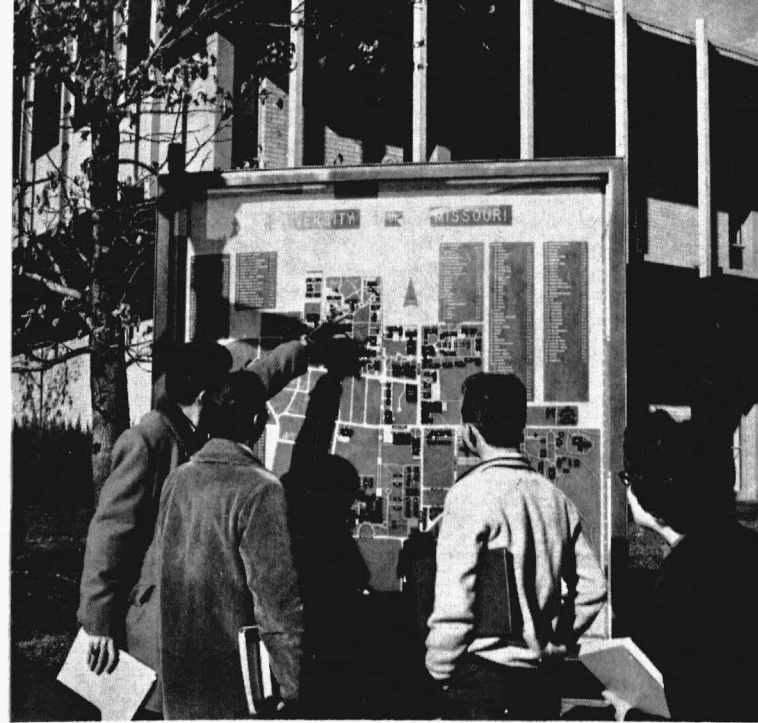
### **Bids and acquisitions**

The University has received five bids for the furnishing and delivery of 100 racing bicycles for use on the campus by Peace Corps trainees. . . . The University has acquired a five-acre tract and pump station at the old Weldon Ordnance plant near Wentzville from the U.S. Department of Health, Education and Welfare. Dr. John Schwada, chancellor, says the tract is near the center of a 7,920-acre site that the University purchased in 1948 and is utilizing for agricultural research.

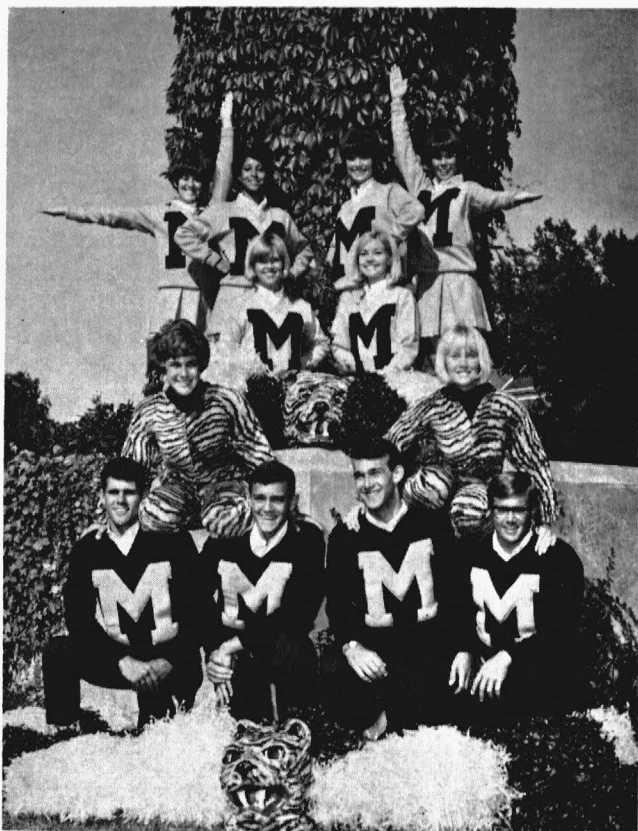
### **Ashmore lectures available**

Three lectures given at the University last year by Harry S. Ashmore, Pulitzer Prize-winning journalist, are now available in book form with publication of "The Man in the Middle" by the University of Missouri Press.

The book, costing \$2.50, is available from the University of Missouri Press, 103 Swallow Hall, Columbia.



Helping students map out courses



Mizzou cheerleaders and "tiger" mascots who will lead yells at athletic and other events during the 1966-67 school year are: (Top row, from left) Sherry Goings, Kansas City; Jacqueline Wright, St. Louis; Barbara Brown, co-captain, Ferguson; and Marty Keyes, St. Charles. (Second row) Marsha K. Boyd, Mexico; and Linda Dianne Glascock, Fulton. (Tiger mascots) Freda Hale, Webster Groves; and Karen Kay Doll, Hermann. (Male cheerleaders) Kenneth H. Long, Dixon, Ill.; Ed Sweeney, Jr., St. Louis; Lowell Fox, Richmond Heights; and Stephen J. Levitch, co-captain, Kansas City.

### Signs of the times

Getting around the University campus is less a problem than ever—thanks to large map signs being installed at strategic locations for the convenience of new students, visitors and returning alumni.

The first of the new location maps is in front of the Fine Arts Building across from the Memorial Student Union. Approximately six feet square, enclosed in glass, the map shows the layout of the campus, along with an index of buildings. Another feature: It is illuminated automatically at dusk by a special light-sensitive device. Willard S. Summers, University landscape architect, says plans call for installation of at least four more maps at major points around the campus.

And looking ahead, Summers says he is hopeful that in the not too distant future, there will be signs in front of every building indicating all departments and offices in that building.

The large location map in front of the Fine Arts Building and the others will be integrated with a system of directional signs indicating the various major campus buildings. Such navigational aids are necessary in the wake of the University's "growing pains" and expansion.

### Tiger esprit de corps

The driving force of much of the cheering and spirit at University athletic events comes from a dozen lively figures urging Mizzou to victory: the 10 cheerleaders and their two "tiger" mascots.

Pep rallies, football and basketball games and many other campus events would appear tame without the yells and gyrations of these enthusiastic students—part of the spirit division of the Missouri Students Association. The squad is chosen each spring by public audition—on the basis of voice, appearance, personality, poise, coordination and grace.

The uniforms of the women cheerleaders are gold with short pleated skirts and V-neck sweaters with large black M's across the front. For travel they wear navy blue skirts, white blouses and navy blazers with the M.U. crest. The men wear black slacks and sweaters with large gold M's across the front. On the road they sport navy slacks and blazers.

(Opposite page) Eight University of Missouri coeds who will add spirit to athletic events during the 1966-67 school year are pom-pon girls (left to right) Michele Corcoran, Columbia; Regi Taylor, Kansas City; Marty Pursley, St. Louis; Cheryl Landwehr, Owensville; Chris Litschwager, Lemay; Donna Gross, Richardson, Tex.; Sharon Lorch, St. Louis; and Jeanne Beth Craig, Monroe City.

**New naval commander**

Capt. E. B. Johnson, 1942 U.S. Naval Academy graduate, is the new commanding officer of the University department of naval science. He assumed the post Sept. 12, replacing Capt. E. S. Waring, Jr., who has been assigned to the Pacific Missile Range.

Besides his Naval Academic studies, Capt. Johnson, 46, has done work in naval warfare at the Naval War College, Newport, R. I., and holds a master's degree in international affairs from George Washington University.

The new Naval ROTC director's active duty experience includes 18 years with a submarine force, a 3-year assignment in France and command of the *U.S.S. Salamonie*, a fleet oiler.

Incidentally, the deadline is Nov. 19 for high school seniors and graduates to submit applications for the 21st annual national competitive NROTC examinations to be held Dec. 10. The program offers young men who have reached their 17th but not their 21st birthday by July 1, 1967, an opportunity to earn a U.S. Navy or Marine Corps commission while attending one of 52 NROTC colleges or universities. In addition, the Navy furnishes tuition, fees, books and uniforms, plus a subsistence allowance of \$50 per month.

**Among the faculty**

Welcome to Dr. Christine P. Weaver, assistant professor of home economics at Howard University, Washington, D. C., who has been appointed assistant director in charge of education in the University of Missouri

Medical Center department of nutrition and dietetics. She will be developing an internship program for dietitians in conjunction with the University School of Home Economics. Dr. Aimee N. Moore, director of the department of nutrition and dietetics, says plans call for integration of the dietetics internship program with the undergraduate program by the fall of next year. Under the new setup the customary five-year program, which includes four years of academic work and a one-year internship, will be replaced with a year-round four-year program. Dr. Weaver, who spent last summer at the University Medical Center, has been assistant professor of home economics at Howard University since 1962. Previously she was associated with the Medical Center at the University of Iowa, where she received her Master's and Ph.D. degrees in nutrition.

**Congratulations to . . .**

Dr. Donald P. Durand, associate professor of microbiology at the University's Medical Center, who has been awarded a National Institutes of Health Special Fellowship to support a sabbatical year at the University of Cambridge, England; Dr. R. H. Westveld, director emeritus of the University's School of Forestry, who will serve as secretary and fiscal agent of Xi Sigma Pi, national forestry honorary, for the next two years.



**Capt. E. B. Johnson**



**Dr. Christine Weaver**



**Dr. Donald Durand**





### **Dr. Weaver's inauguration set**

It's still a long way off, but the wheels already are in motion as plans go forward for the inauguration of University President John C. Weaver. He'll be sworn into office formally next April 18. All four campuses will be involved in the planning and carrying out of the big event. The date was set at a meeting of the inauguration committee headed by Dr. Raymond E. Peck, University vice president for research. The new head of the 127-year-old University assumed his duties on Sept. 1 with the retirement of Dr. Elmer Ellis who served as president for 11 years.

### **Gifts and grants**

Thirty-seven grants to the School of Medicine have been approved by the Board of Curators. They total \$1,192,091, to further medical research. Twenty-three of the grants, for \$700,980, are from the U.S. Public Health Service, with 19 applying to projects at the Medical Center while four support work at the Kansas City General Hospital, an affiliate of the University School of Medicine. Of the 14 other grants, eight are for projects on the Columbia campus and six go to Kansas City and St. Louis institutions affiliated with the medical school. The largest single grant—

\$230,481—was awarded by the Pentagon for a study of malaria in human volunteers conducted at the Kansas City General Hospital under the direction of Dr. John D. Arnold. . . . OTHER GRANTS: \$5,000 from Shell Chemical Company for research in swine parasite control; \$13,306 from the Public Health Service for research into the comparative metabolism and toxicology; \$16,959 from the health service to Space Sciences Research Center to study the physiology of hibernating mammals; \$24,940 by the Vocational Rehabilitation Administration for use in continuing teaching and traineeship programs in physical therapy; \$28,542 from the health service to the department of veterinary anatomy to study "Tetracycline and Tooth Development in Swine."

### **Taylor-made**

Jack Taylor, award-winning editor of the *Alumnus* since 1954, and currently assistant director of the University Office of Public Information, fills us in on some interesting items in his new "Mizzou Scene" column. The daily mail offers its share of amusement, and one correspondent was persistent in his communications. Reports Jack:

"He had read in a magazine devoted to quarter horses that 'a man from New York sent his wife and daughter to a horseshoeing course at the University of Missouri. I was wondering if I might attend the course as I am very interested in the field. I wrote to the University once before, they said there wasn't any horseshoeing course there. Which was right?'" And the observant Taylor notes two research associates in agricultural economics share an office on Hitt Street: Oliver Wendell Holmes and Herbert Hoover.

Some Taylor briefs:

The University has 261 acres of grass to mow on its Columbia campus—The school first admitted women students way back in 1868—A total of 3,050 courses are offered at the University—The first college homecoming was held at Mizzou in 1912.



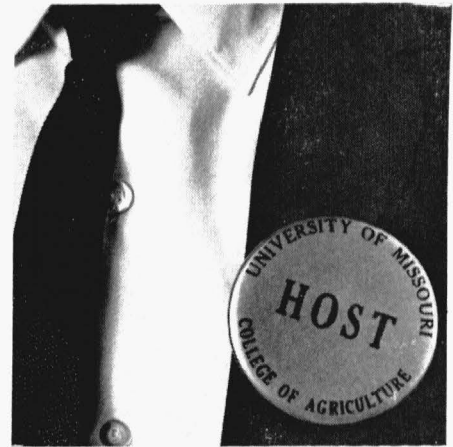
**Dr. Ruthford H. Westveld**

# 'WELCOME, HIGH SCHOOL SENIORS



# AND PARENTS'

*Ninth Annual University Day  
is attended by record 5,000  
who see the college in action*



MISSOURI UNIVERSITY'S DEDICATION to the student of the future produced a campus invasion of 5,000 high school seniors, parents and some school officials Oct. 8 at the ninth annual University Day. All facets of college life held "open house" with faculty members and staff available for consultation or group explanation, guided tours to points of interest, university schools and professional facilities arranging demonstrations, displays and discussions, and special entertainment featured.

In spite of the greyness of the day, more visitors attended this year's event than in any previous year, Neil Freeland, University Day chairman, reported. Statistics showed that more than 2,500 seniors representing 184 high schools had pre-registered, to be augmented on the day by additional numbers.

OPENING ASSEMBLY was held in Brewer Field House in order to accommodate the crowd. Dr. Jack Matthews, Dean of Students, presided, and William Thompson, Jr., president of the Missouri Student Association, represented the campus. The University Concert Band, under the baton of Alexander Pickard, played.

In welcoming the conclave, Chancellor John W. Schwada outlined the history and aims of the university, commenting that "the fact you are here proves that you have a serious interest in college and that you know further education will be of importance to you in your chosen career, whatever that may be." He invited the students and parents to make full use of the day to enable them to make a wise decision about the choice of college, the course of study and career best suited to their needs and abilities.

TO ACQUAINT VISITORS with campus life and give first hand insight into the opportunities and facilities of the Columbia campus, tours were arranged through





Exhibits, demonstrations and tours were set up by over 80 departments of the University. Some of the visitors above are future foresters. Below, students see part of the nuclear reactor facility.



all schools and colleges, and day-long bus tours pointed out major facilities with stops to allow guests to visit such buildings as residence halls, a sorority and fraternity house, the library, student union, and athletic center. Parents also met separately at the Memorial Union with staff members who discussed and answered questions on housing, scholarships, financial aid, employment opportunities, academic requirements, extra-curricular activities and other aspects of university life.

Lunch was served at the Student Union and Student Commons, and a post-luncheon assembly provided the opportunity for announcements, rest and relaxation while the University Singers, directed by Jon Rømer, performed.

A detailed program of events and a map of the campus was provided for each attendant to help them attain maximum value from the day's activities.





**MIZZOU'S  
GOING TO EUROPE...  
WANT TO  
COME ALONG?**



**23 days of fun and excitement—June 23 to July 16, 1967**

What a great time you'll have with all your friends on the University of Missouri Alumni's "Tiger Special" excursion to Europe. Fly over and back on Air France's Boeing 707 Jet Tiger at tremendous savings. Choose from these three touring plans:

**GRAND EUROPE \$799**

England, Holland,  
Belgium, Luxembourg,  
Germany, Switzerland,  
Liechtenstein, Austria,  
Italy, Monaco, France

**SCANDINAVIAN HOLIDAY \$887**

England, Holland,  
Germany, Denmark,  
Sweden, Norway,  
France

**INDEPENDENT \$365**

England, France

Don't miss this opportunity of a life-time. Get further information today from:

Mrs. Mary Klausman  
982 Kinstern  
St. Louis, Missouri 63131  
YOrktown 6-8547





## BAND AND PARENTS' DAY

*That was the Saturday when parents of new students came to the campus to see where and how their children lived, and high school bands played for the football crowd*



THE 40-DEGREE WEATHER and brisk wind of October 15 had little effect on the outcome of the football game with Oklahoma State, according to coach Dan Devine. Nor did slightly moist air from the previous evening's rain hinder the activities of nearly 2,500 mothers and fathers who visited the University during the 14th annual Parents' Day.

During the morning, parents listened to a panel discussion and met Chancellor John Schwada and divisional deans and student leaders at an informal reception in the Student Union. Then they ate lunch at residence halls and fraternity and sorority houses and, with special-rate tickets, attended the football game.

Activities were less sheltered near the stadium. There, about 4,000 students from 58 high school bands gathered shortly after 9 a.m. to practice for the concert which entertained football fans during the half-time intermission.

Rehearsal for the 4,000 plus Marching Mizzou, the M.U. band, was held on the old football practice field west of the stadium, where puddles of water still remained from Friday's downpour. The massed band was so large that two sub-conductors were needed in order for cues to be seen by all.

When performance of martial adaptations of "Hey Look Me Over" and "Mame," as well as the traditional "Under the Dougle Eagle," had been synchronized, the bands were briefed on seating and assembly procedures in the stadium and freed until game-time.

On the playing field after 1:30 p.m., the struggle between the Tigers and OSU turned out to be a defensive one. The first half was scoreless. Missouri travelled 80 yards in 10 plays following the third-quarter kick-off to win 7-0.

Other plays took place on the sidelines. □







Gusting winds are hard on hair-dos and passing attacks. Missouri connected 3 passes out of 10 for 30 yards' gain.







These lads had seats on the east side of the stadium. They're standing in queue formation, awaiting the signal to take their places on the field.



We counted 99 buses in the picture. There were more just outside the camera's range.



Dr. Jones lectures to students in the undergraduate Shakespeare course.





# 'To Thine Own Self Be True'

*Dr. William M. Jones who has made  
Shakespeare 'live,' directs student affairs  
as associate graduate dean*

RAPPORT WITH STUDENTS, which reached new heights in the popularity of his Shakespearean classes, has taken new direction for Dr. William M. Jones, who this fall became Associate Dean of the Graduate School responsible for student affairs.

This dual assignment, as Associate Dean and Professor of English, is a most desirable combination, he says, "for the committed teacher must keep aware of the problems that cover other areas. They are all part of one life on the university campus."

To be exposed to his rare teaching ability, literally hundreds of students have jammed the auditorium in Arts and Science, where outbreaks of laughter punctuated the pin-dropping silence when students were hanging on his every word. So interested and excited did the audience become that one coed remarked, "If you cut 'Shake' you're always afraid you're missing out on something." So many have remarked that "He is the best teacher I've ever had," that even engineering or strictly scientific oriented students have arranged their programs to take his courses.

While teaching is currently at a minimum on his busy schedule, Dr. Jones is applying his captivating combination of wit and wisdom to administering to 2,848 graduate students. Programming for the masters and doctoral candidates, counseling, and involvement as a clearing house for students' problems is a new routine absorbed into his daily life, although his door is always open to the student of renaissance literature or former students who just want to drop by and say "hello."

Foremost on his program of progress in his new area of service is the formation of a Graduate Students Association to provide a much-needed community life for these young men and women.

His own experience as a graduate student helps him to bring insight to his new position. After receiving his bachelor's degree at the University of Alabama in 1948, he earned his master's there and did his doctorate work at Northwestern University. Thereafter, he obtained a post-graduate fellowship at the Folger-Shakespeare Library in Washington, D. C. His teaching experience began at Wisconsin State College, Eau Claire, where he remained two years before going to the University of Michigan at Ann Arbor for four years. He came to the University of Missouri in 1959.





"If you cut 'Shake,' you're always afraid you're missing out on something."







Said a husky six-footer: "He's like one of us. He may be funny, but he makes you want to read those plays." Above, Dr. Jones meets with students in a graduate seminar.





The racetrack is seen from a window in Crowder Hall, with the football stadium in the background. Opposite page: The small picture shows how our cover girl got her puddin' face. At right, a contestant bursts the balloon at the finish line.

## 'Greatest Tricycle Race of Them All'

*The annual Phi Psi '500' challenges sorority teams on hazardous obstacle course*

MUD GUMMING UP THE WHEELS, pie in the face, and a soaking cascade of water from a balloon that must be retrieved are only a few of the hazards rigged up annually by members of Phi Psi fraternity on the course of their "500 tricycle race."

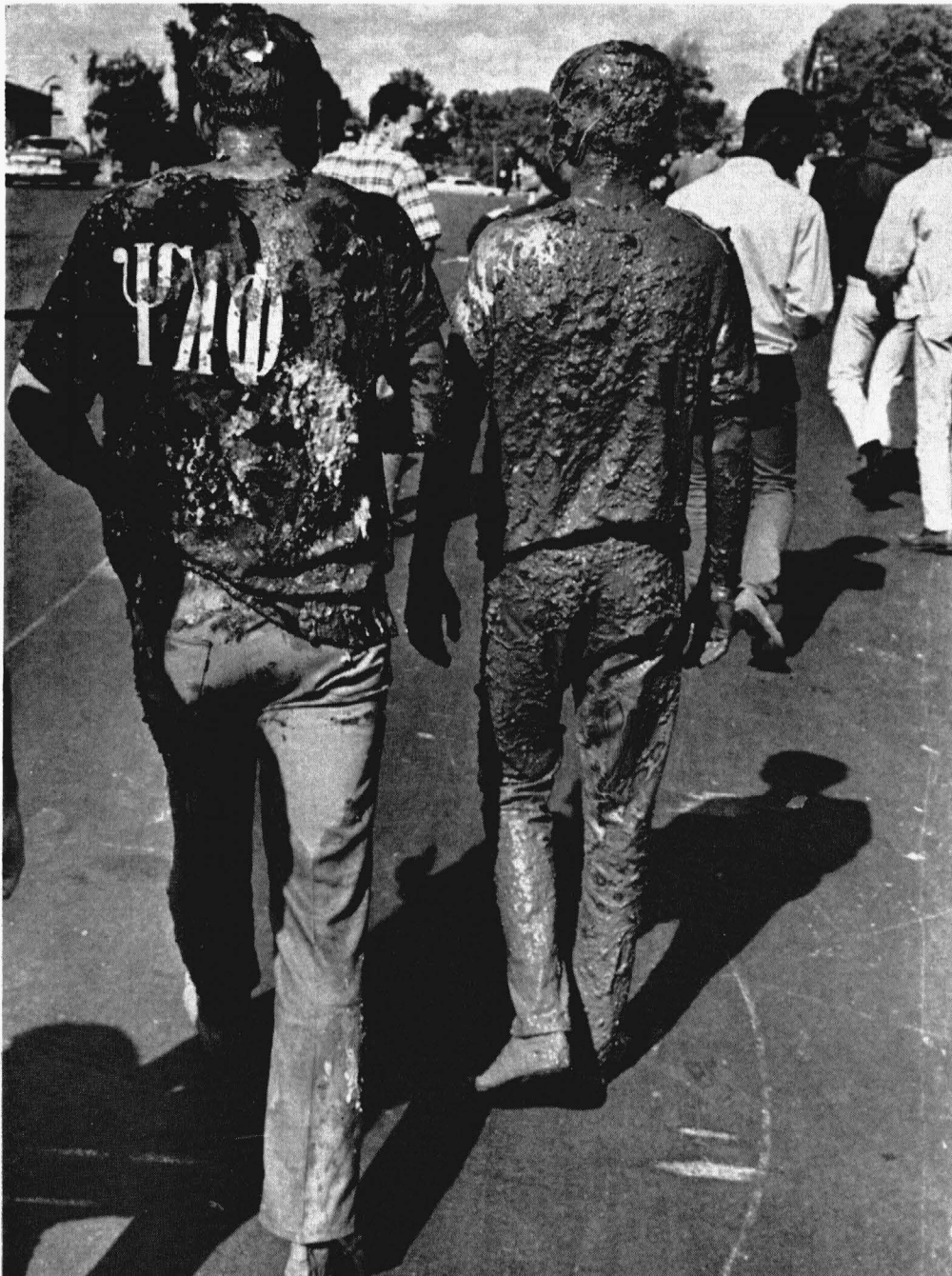
The competitors—this year a total of 16 sororities—assembled at 10:30 a.m. October 1 on the old ROTC drill field to peddle their way through eight heats on a semi-circular course to record the best time. Cheered on by local members of their individual groups and harassed by the gleeful enjoyment of a sizeable contingent of fraternity men, they plowed through sand







Phi Psi pledges were put to the test.





"And they're off!"

and mud and applied furious knee-action over smoother ground.

Shortness of stature—to keep the knees below the top elevation of the handle bars—and sheer good sportsmanship are considered to be top qualifications for team entrants. The ability to endure such miseries as raw egg trickling down the back or searching for a grape in a pie while astride the tricycle are also prime requisites for selection of the girls.

Winner of the day-long activity was Gamma Phi Beta whose team members were pledges, Pat Dowling and Lynn Merz. Kappa Kappa Gamma placed second

under the wheelsmanship of Trish Hill and Jenette Justif, and Delta Gamma, with Earle Erickson and Candy Cannon, finished third.

The prize for the best costumed team—an added race incentive—went to Janice Rimmer and Jill Hussy, Chi Omega, dressed to the theme of "Chicken Man."

Climax of the day was an evening yard party at which 4,000 students saw Cheri Entsminger, Kappa Alpha Theta, crowned "500" queen, with Cheryl Schaefer, Gamma Phi, and Pam Jensen, Chi O, as her court. Bob Kuban and the In-Men played for the dance given in their honor. □

# THE FORMATIVE YEARS

By ELIZABETH T. THOMPSON

*Mrs. Thompson looks back on her university years and recalls some of the professors, the courses and surroundings which were part of her impressionable years.*



The play was the thing when this M.U. cast posed for its picture. We think the title was "Choosing a Wife." Courtesy Missouri Historical Society.



JOHN HENRY NEWMAN wrote that "A university kindles the affections of the middle-aged by its beauty." Indeed it does—especially if it is your Alma Mater!

Was there ever a more beautiful campus than what we called the "red" campus at the University of Missouri—the original Jesse Hall with footprints imbedded in the concrete steps, the Francis Quadrangle, and the Ionic Columns? There is something so warm and inviting about red brick buildings. They are conducive to learning by reason of their tradition. But the real excellence and symbolism is in the columns, reminiscent of the grandeur and wisdom of ancient Greece. They give us a proper perspective and offer repose from tumult and anxiety. But then, time throws a mantle of glamor over the past, as someone has said.

In the fall of 1928, there were only 4,000 students enrolled at M.U. At first some of us were homesick, and although we could not all call each other by name, we had a common bond of being on our own and a sense of community. A glance at each other's eyes revealed our fears and hopes of obtaining a liberal education, whatever that was. It was thrilling and challenging to be a part of the concourse—to lose ourselves in higher studies and to share them both with the professors and fellow students.

Nearly all of my instructors reminded us that the twentieth century was heralding the scientific age—in fact, it *was* the *scientific age*. This had a familiar ring. My elder brother at home had said that, with the discovery of electricity and the invention of radio, there would be illimitable possibilities in the field of science and that nothing could stop the march of science. But ironically enough, this same University, due to pressure from the irate parents, found it expedient to oust or accept the resignation of a brilliant professor of psychology who had circulated a so-called sex questionnaire among the students for the purpose of obtaining statistics to further the work in his field of science.

1928 WAS A PRESIDENTIAL YEAR, and Governor Al Smith as Democratic nominee was opposing Herbert Hoover, defender of the G.O.P. Some of the intellectual circles on this midwestern campus associated Smith with Tammany Hall, which was true, and thought he was ill-suited to become president. But being the daughter of staunch Democrats, I rather admired Al Smith. I thought he had a powerful countenance and exhibited much animation. He was no dead-beat! But since these were the formative years, I was somewhat influenced by associates whose judgment I considered to be of a superior quality. While I was not for Hoover, inwardly I felt a disdain for the associations and background attributed to the Democratic nominee. I was too young to vote.

But later, along with my fellow countrymen, I was to experience the adverse effects of the inevitable depression.

The College of the Bible in Lowry Hall was adjacent to the red campus. My father was very anxious that I take a course from this school, and I was fortunate to have Dean G. D. Edwards as my instructor in Old Testament. I remember his teaching that Genesis was a spiritual interpretation of the beginning of the world, that the Book of Jonah was an allegory, and that in order to understand any book in the Bible it was necessary to know who the author was (if possible), to whom he was writing, and under what circumstances.

In the Spring of 1929 Dean Edwards with tears in his eyes told us of the tragic death of his beloved wife. He recounted this event with poetic justice and mystery. Dean Edwards was emotional, a vital and glowing teacher of Old Testament.

I ATTENDED FIRST CHRISTIAN CHURCH in Columbia and I still have visions of Mrs. Hetzler (Jane Froman's mother) playing the pipe organ, and I believe it was blond Dorothy Case singing in the quartet "Here, O My Lord, I see Thee Face to Face." I considered the Rev. Mr. Carl Agee, our pastor, to be the vicar of Christ on earth.

I was fortunate, also, to receive Dean Albert K. Heckel's lectures in Citizenship, a required course of study for freshmen, conducted in the auditorium of Jesse Hall. Dean Heckel engaged our attention and interspersed his lectures with appealing anecdotes. For instance, he said that he had traveled all over the world and that, in his opinion, the most beautiful women were to be found in Sweden or the Scandinavian peninsula.

Dean Heckel first introduced us to Darwin's "The Origin of the Species," the theory of evolution, and the survival of the fittest." He defined the Mendelian Law of Heredity and dwelt upon the preeminent factors influencing life, heredity and environment. Which was the more effective? Being swayed by my father (we discussed these things while I was home on vacation), I leaned toward heredity and now that we are entering into the "genetic age," it would lead me to believe that my father's thinking was in the right direction.

Dr. Harry Gunnison Brown, who wrote his own textbook, "Economic Science and the Common Welfare," was my professor in Economics. He was brilliant with sparkling brown eyes. He seemed genuinely happy to explain the meaning and processes of monopolies and the law of supply and demand. It was obvious that he loved his subject.

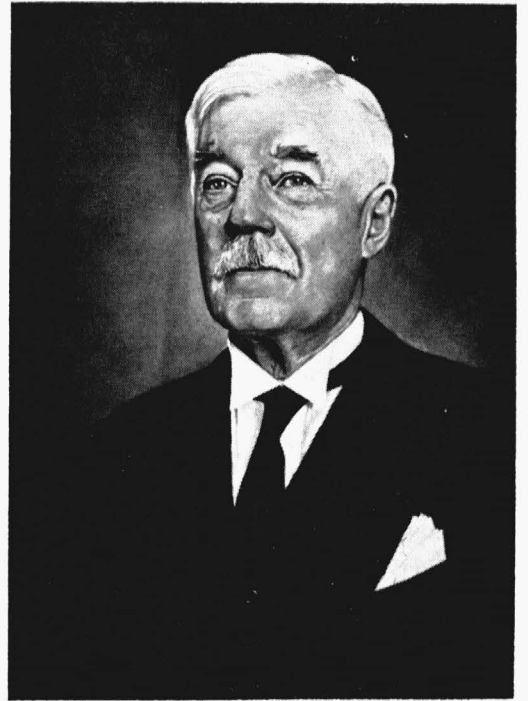
Our pleasant young French teacher was Miss Bar-



Albert K. Heckel



H. Gunnison Brown



M. P. Ravenal



A football crowd at Rollins Field in the early 20's. Courtesy Missouri Historical Society.



Carl Agee

bara Reavis. She was a decided blond and her smile was charming and flawless! "Comment faites-vous, ce matin?" She was the soul of patience and conscientiously insisted that we employ those nasal sounds. It was important to report on the little classic, "Mon Frere, Yves." Perhaps we read Balzac, in due time, but I best remember him from a good English translation. I feel greatly indebted to skilled linguists. To me they are among the most useful people on earth because they help to promote understanding among world citizens of different cultures.

Miss Brashear was our kindly-intentioned Freshman English teacher. On the first day of school, she instructed us to write a theme on "Why I Came to College." I couldn't remember writing many themes in high school. Miss Breshear paved the way to our writing in a purposeful manner. In the hallways in Jesse Hall, she walked with head down as if in meditation (the introspective type), but upon recognizing a pupil she would encourage him by saying he was going to be one of her "star" pupils. In her wisdom she knew that an ounce of encouragement was worth more than a pound of criticism.

THERE WAS THE BELOVED Miss Ruth Huey who

also taught English. She insisted that since she was from Arkansas, it was acceptable for her to say "you all." Miss Huey also thought that "ingenious" was a beautiful word, because of its connotation, and that the word "unique" should rarely be used—it was almost unspeakable!

I cannot remember the names of my Botany and Geology professors. Botany class was held on the "white" campus in Lefevre Hall. I like flowers and trees but not particularly their cross-sections. There was much talk of chlorophyll, pollen, and chromosomes. Geology seemed less intricate than Botany. Field trips gave us an everlasting appreciation for the Jefferson City, Callaway, and Cooper formations of sedimentary rock, or cliffs as we call them. The professor explained that the lowest formation corresponded to the Ordovician Age and that it would take about 25,000 years to form a three-foot layer of this kind of rock under aquarian conditions. We were filled with wonder for the Creator of the universe.

WE DID NOT HAVE guidance counselors as such in those days, but we *did* have rumor! It was rumored on campus that "Preventive Medicine" was a snap course, so I enrolled under Dr. Pete Ravenel. His name would seem to indicate that he was of French or Spanish descent, but his accent sounded German from where I sat in the large lecture class on the white campus. We had no textbooks and to this day I have no idea what constitutes Preventive Medicine!

I remember our compassionate Dean Priddy, Dean of Women. Sometimes her face was forbearance itself. If one would have an audience with her concerning housing problems or subjects of study, she would listen attentively. She also wanted us to make the most of our personal appearances, our outward beauty, be it ever so little. Dean Priddy believed that higher education involved the whole person.

A little learning has been called a dangerous thing, but here at the University of Missouri, I was initiated into an indefatigable search for the truth, a desire to appease an insatiable curiosity; to concentrate on the good, the beautiful, and the true as a way of life, while at the same time attempting to eliminate false propaganda, the ugly, and the superficial. It becomes increasingly clear to me why I have a reverence for Jesse Hall and its surroundings which were the scenes of my impressionable years. □





	Ed Kennedy	Gene Trumble	Werner Mueller	Bob Atkin	C. B. Fitzgerald	
	Lloyd Turner		Mark Swearingen			Herb Harvey
Dr. Adeline Hoffman	Joe Hoover	Dr. Joe Fisher	Jim Rutter		Ramon Gass	Dr. Gerry Johnson
Marvin McQueen		B. W. Robinson			Bob Stemmons	
				Elinor Gaunt		Karl Wickstrom
				Garth Landis		

## Alumni Leaders Return to Campus

*To 'cast their eyes downward and see where they had been' in seeking future direction for their continuing role of service to the university*

“THE KIND OF INSTITUTION this is 20 years from now will depend on the support and help of its alumni,” Chancellor John W. Schwada told representative alumni leaders returning to campus Sept. 16-17 to plan activities for the forthcoming year.

“You are our associates in building a great University,” he challenged them as they reviewed the objectives of the Association, were given a “Red Carpet” tour of the campus to rediscover old haunts interspersed with the “new look,” and glimpsed the future “in depth” at the University Reactor, the completely automated library complex, and schools or departments of their choice.

Concurrent with the meeting of 26 members of the Alumni Association Board of Directors and six out-of-state chairmen was a meeting of the membership committee under the leadership of Garth Landis, St. Joseph, Mo., which set as its goal for 1967, 20,000 active members, an increase of approximately 5,000. This committee will conduct a major campaign to involve direct mail, telephone and personal solicitation, a pilot program for which will be launched in Tulsa, Okla., Nov. 11, with the cooperation of area chairman Norbert Miller.

ALUMNI ASSOCIATION MEMBERSHIP provides a two-way communication between the University and its graduates and former students. It aspires to be informed of the needs and problems of the University, to create programs of value to both, and to be of service.

Proposals for the 1966-67 year as outlined by Marvin D. McQueen, St. Louis, president of the Alumni Association, continue such traditional programs as homecoming, class reunions and alumni meetings, amplify the divisional programs and services, provide publications such as the *Missouri Alumnus* and *The Panorama of Progress*, an annual report sent to all dues paying members, and keep up-to-date all biographical records on graduates and former students.

In addition, the alumni leader indoctrination program, of which this was the first meeting, will be extended; influential visitors will be sought for campus appearance and University speakers at alumni and public gatherings will be sponsored; and assistance will be provided to the University in presenting its fiscal needs to the General Assembly.

Already accomplished this year is the erection of six more signs in the alumni-sponsored Campus Identification System (pictured elsewhere in this issue). Outdoor maps to guide visitors have been placed at the intersections of Highways K and 740, College Avenue and Highway 740, Stewart Road and Providence Road, College Avenue and University Avenue, Elm Street and



Above, Dr. Frank Williams and Nancy Madden (left) talk with Bob and Connie Stemmons.



Alumni leaders during a coffee break in the Faculty-Alumni Lounge of the Student Union.



From left to right are Bob Atkin, Dr. Adeline Hoffman and B. W. Robinson.

Herb Harvey and family came from Eldon, Mo.





In 1956, we had 3,500 Tigers.



By 1968, we want 20,000 Tigers.

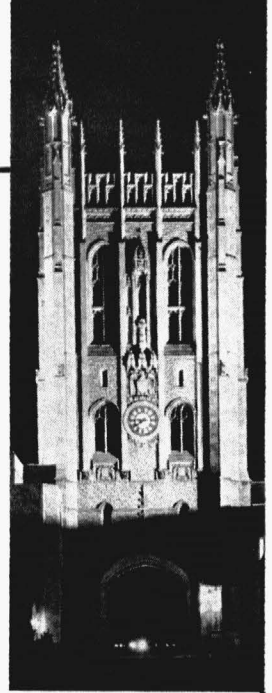
Ninth Street, and the Eighth Street Circle in the vicinity of the Columns. Other special alumni-sponsored projects are enumerated in the box at right.

In urging leaders at the Seminar to seek new directions for the future, McQueen paraphrased Ghandi, who said "Cast thine eyes downward and see the imprint of thine own footprint." Our role," he continued, "is to organize the opinion of the graduates and former students in support of the administration, the staff, and the school to enlarge and to enrich the program of the University."

The Alumni Leaders Seminar, attended by six new Board members—Robert Stemmons, Mt. Vernon, Mo.; E. S. Hamilton, Richmond; C. B. Fitzgerald, Warrensburg; Herbert Harvey, Eldon; Lloyd Turner, Chillicothe; and Dr. Adeline Hoffman, Iowa City, Iowa, representative from the School of Home Economics—was planned by Mrs. William Gaunt, Columbia, chairman; Don Shuey; Robert Aikin, Rolla; Robert Hoffman, Montgomery City; and Werner Mueller, St. Louis. Other Board members attending were: Vice presidents, John Miller, Kansas City and B. W. Robinson, Jefferson City; treasurer, Hartley G. Banks, Columbia; Mark Swearingen, Monroe City; Bob Dallmeyer, Jefferson City; Dr. Frank Williams, Kansas City; Karl Wickstrom, Marshfield; Eugene Trumble, Hopkins, Minn., and Joe Hoover, Western Springs, Ill., Midwestern Region; Dr. Joe Fisher, St. Joseph, medicine; Jim Rutter, Shelbina, agriculture; Dr. Gerald Johnson, Independence, veterinary medicine; Ramon Gass, Jefferson City, forestry; and Ed Kennedy, Tulsa, Okla., Southwestern Region. The six state chairmen were Dave Goodman, Miami, Fla.; Don Blume, Houston, Tex.; Harry Landis, Dayton, Ohio; Bob Arkes, Des Moines, Iowa; John Gatchell, Oklahoma City, Okla., and Dallas Nelson, Memphis, Tenn.

Members of the Membership Committee include Lloyd Turner; Cordell Tindall, Fayette; Bill Symon, Jr., and Martha Freeman, Kansas City; Bill Tyler, St. Louis and Eugene Trumble. □

## Some Projects of the Alumni Association During The Past 5 Years



Various awards including \$1000 stipend for Distinguished Faculty Award	Since 1961
Development of recreation area at Rollins Springs	1961
Decoration of Alumni Lounge and Board Room in South Wing of Union	1962
Lighting of Union Tower	1963
Significant gift to University Student Aid Fund	1963
Partial financing of University Singers appearance at the New York World's Fair	1964
Pattern gift to Chancellor of St. Louis Campus	1964
Financial assistance for Band and Cheerleaders appearance at Bowl games	1965
Sponsorship of campus visitation program—Bringing important visitors to the campus	1965
Campus Identification System—signs and maps recently installed on campus to help visitors find their way about	1966
Engineering drawings for new Field House	1966
Continuing financial support of information program designed for better University relations with General Assembly	
Other projects in support of various organizational, departmental and divisional activities through the years	



## '08

D. HOWARD DOANE, BS Agr., MS Agr. '09, and Mrs. Doane have moved to the campus of the School of the Ozarks, Point Lookout, Mo., where they will be associated with the school in advisory capacities. Dr. Doane received an honorary Doctor of Laws degree from M.U. in 1953. He is chairman of the board of the Doane Agricultural Service, Inc. The Doanes have given a tract of over 600 acres to M.U. Proceeds from sale of the land will be used to establish a visiting professorship in farm management.

## '12

ARRETTA WATTS, AB, BS Ed., lives on a farm near Elsberry, Mo., where she raises Herefords. She was a free-lance writer for many years.

## '14

MYRA J. HARRIS, AB, BS Ed. '15, has received an AAUW name grant award of \$500. Miss Harris, who retired from teaching in 1954, lives at 21 W. 5th St., Watsonville, Calif.

## '16

RUSH H. LIMBAUGH, AB, Cape Girardeau, has been appointed a member of the Missouri Commission on Human Rights.

HERBERT K. THATCHER, BS Agr., was honored recently in El Dorado, Ark., for his role in the development of the Ouachita River Basin. The program includes construction of a navigation channel which will link southern Arkansas with the Mississippi River. Mr. and Mrs. Thatcher (LILA DALTON, AB '12, BS Ed. '14) are shown (seated, right) with their three children.

## '17

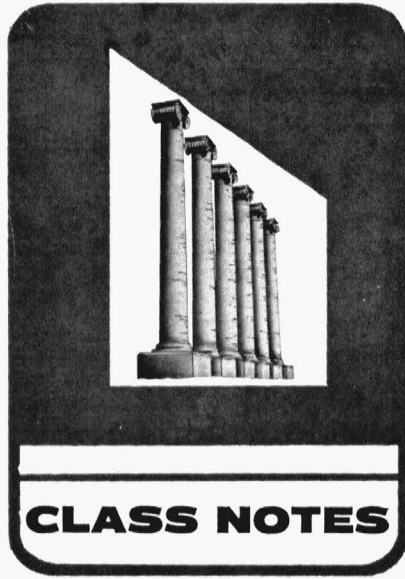
Dr. PAUL S. LOMAX, BS Ed., has received an honorary Doctor of Laws degree from Rider College, Trenton, N. J. Dr. Lomax, professor emeritus of education of New York University, lives at 21 Beach Pl., Maplewood, N. J.

## '21

SAM BROADBENT, BS For., is chief of the division of commerce and housing, Bureau of the Budget, Washington, D. C.

## '22

SAM B. ARMSTRONG, Arts, Eng., director of training and former city editor and national correspondent for the *St. Louis Post-Dispatch*, retired this summer after more than 41 years with the newspaper. He and Mrs. Armstrong (AN-



NABELLE WAYLAND, BS Ed. '29) live at 527 East Dr., University City, Mo.

DOROTHY NIGHTINGALE, AB, AM '23, teaches organic chemistry at M.U. She is vice-president of the Columbia Audubon Society.

CASH SANDERSON, BS BA, has retired after 41 years with Armstrong Cork. He lives at 259 Grand Ave., Long Beach, Calif.

## '24

A. TILLMAN MERRITT, AB, BS Ed. '25, BFA '26, DFA '64, represented the University of Missouri at the inauguration of Howard W. Johnson as president of the Massachusetts Institute of Technology at Cambridge, Mass., on October 7. Dr. Merritt is professor and chairman of the department of music, Harvard University.

L. HOMER WILLIAMS, BS Eng., St. Joseph, has retired from the state highway department after 42 years of service. In recent years he has been the department's resident engineer on most Interstate 29 projects in the area.

## '26

ROBERT W. JACOBS, BJ, retired in May after selling his office supplies business in Pauls Valley, Okla. Before moving to Pauls Valley in 1950, he was a newswriter and publisher in Texas.

H. G. BANKS, AB, Columbia, is state chairman for the American Bankers Association's drive to raise an additional \$2 million for their Foundation for Education in Economics. Mrs. Banks is the former EUGENIA OWEN, AB '31.

## '27

Mrs. Llewelyn M. Fox (MARY GERTRUDE KIRTLEY), AB, Greenville, Tenn., represented the University of Missouri on October 4 at the inauguration of the Rev. Douglas G. Trout as president of Tusculum College, Greenville, Tenn.

OVID A. MARTIN, BJ, agricultural writer for the Associated Press in Washington, has received the Missouri Farmers Association award for distinguished service to agriculture.

## '28

C. EARL SCHOOLEY, BS Eng., who since 1959 has been director of operations for Long Lines, the long distance and overseas communications unit of American Telephone and Telegraph Company, retired on October 15 after a 39-year career with the Bell system. In 1960 he received an engineering honor award from M.U.

## '29

CLYDE W. FRUIT, BS BA, was recently elected president of the National Independent Dairies Association in Washington, D. C. He is president of Edwardsville Creamery Company, Edwardsville, Ill.

## '30

G. J. COTTIER, AM, recently became a member of Omicron Delta Kappa. Dr. Cottier is professor of poultry science at Auburn University, Auburn, Ala.

TALITHA GISLER, BS BA, AM '31, retired in September from her post as assistant comptroller for the University.

## '32

E. WILLIS BROWN, BJ, represented the University at the inauguration of Harvey Reed Fraser as president of the South Dakota School of Mines and Technology, Rapid City, S. D., on October 30. Mr. Brown is publisher of *The Rapid City Journal*.



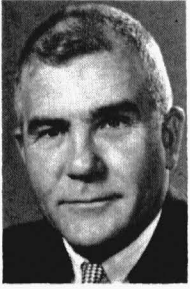
The Thatchers



McVay, '36



Bohling, '38



Young, '40



Underwood, '39

JAMES DILLET FREEDMAN, AB (WD), is author of a book of poetry titled *Happiness Can Be a Habit*, published by Doubleday. He and his wife live in Lee's Summit, Mo., where he is director of educational expansion for the Unity Movement.

WARD L. STUDOR, AM, Indianapolis, Ind., was recently named a Fellow of the Soil Conservation Society of America.

### '33

WILBUR G. (Jerry) SINGLETON, AB, New York, N. Y., is executive vice-president of the Metropolitan Fair Rent Committee. His wife is the former CRYSTAL L. MATHESON, AB '30.

Mrs. Edward A. Glenn (ETHYL ENGLISH), AB, lives in Louisiana, Mo. Her husband is an attorney and farmer there. A son, Edward A. Glenn, III, is a senior in the School of Medicine at M.U.

RALPH E. TRABER, AB, AM(WD) '34, represented the University of Missouri at the inauguration of Carl Gustaf Fjellman as president of Upsala College, East Orange, N. J., on October 4. Mr. Traber is assistant vice-president of The Equitable Life Assurance Society of the United States.

### '34

WILLARD GRAFF, AM, received an honorary doctor of laws degree from Drury College, Springfield, Mo., in August. He and his wife (VELMA L.

STRICKLAND, Grad. Educ.) live in Springfield, where Dr. Graff is superintendent of schools.

HENRY MacMILLAN ALEXANDER, Ph.D., Fayetteville, Ark., has retired as chairman of the department of government at the University of Arkansas, to become director of the division of public administration.

KENNETH G. WICKHAM, Engr., of Fort Lee, Va., became Adjutant General of the United States Army on August 1.

CASPER S. YOST, LL.D., president of Ridgway Advertising Agency, St. Louis, attended the annual management conference of the National Advertising Agency Network in Vancouver, B. C., in July.

### '35

ALFRED BECKMEYER, BS Agr., and his family represented the Boone County Extension Council at the Missouri State Fair in August. The Beckmeyers were selected by the council for their outstanding leadership and participation in church, school and community affairs for more than 20 years.

FLAVIUS FREEMAN, LL.B., Springfield attorney and chairman of the board of trustees of Drury College, is Regent of Sigma Nu, the fraternity's highest national office. He and his wife (FRANCES FERGUSON, AB '36) have three children: MERCEDES, AB(WD) '59, now Mrs. Ted A. Smith of Sedalia, Mo.; MARTHA, AB(WH) '62; and Samuel, who attends Drury College.

LESLIE M. FRY, Agric., Law, has been elected commander-in-chief of the Veterans of Foreign Wars. He lives in Reno, Nev.

### '36

ALLEN L. OLIVER, Jr., AB, is chairman and secretary of Sanders & Company, Dallas, Tex.

CHARLES KYD, BS Agr., Three Forks, Mont., has become a life member of the Alumni Association.

DONALD C. McVAY, Jr., AB, New York City, is senior vice-president, corporate development, for H. J. Heinz Company.

### '38

Lt. Col. WALTER H. BOHLING, Jr., AB, is Chief of Dental Clinics at Walter Reed General Hospital, Washington, D. C. The Bohlings' son, John, attends M.U.

GARLAND L. FRANCIS, BS Agr., is a mortgage broker with the Wickes Corporation, Austin, Tex.

### '39

TYKE HARRISON YATES, M.Ed., is dean of men at Westminster College, Fulton, Mo.

JOHN W. HOWARD, Agric., Arts, is with the Bank of Belton. He lives at R.R. 1, Peculiar, Mo.

JAMES L. TURRENTINE, BJ, has been named a vice-president of Pitney-Bowes, Inc. He and his wife (ELIZABETH C. McNERNEY, BS Ed. '40) and four sons live at 3052 High Ridge Rd., Stamford, Conn.

Col. CHARLES C. UNDERWOOD, BJ, AM '50, has been awarded the Legion of Merit for outstanding service during the past two years as chief of the Army's public information division in Washington, D. C. Col. Underwood and his wife and three children now live in Hawaii, where he is deputy public affairs officer on the staff of Adm. U. S. G. Sharp, Commander in Chief, Pacific.

### '40

BESSIE L. PUGH, AB, has been appointed visiting professor at MacMurray College, Jacksonville, Ill. She retired this year as associate professor of special education, Colorado State College, Greeley.

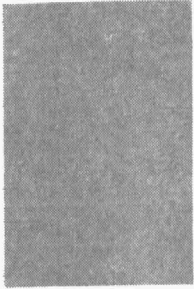
VIRGIL N. SAPP, Grad., is dean of the extension division on the M.U. campus in St. Louis. He and his wife HAZEL (Arts '40) live at 32 Dontaos, Des Peres, Mo.

REX B. TITUS, LL.B., Joplin, has been named judge of the Springfield Court of Appeals.

CHARLES G. YOUNG, Jr., LL.B., Kansas City, has been named vice-chairman of the board of City National Bank and Trust Company. He and his wife live at 221 W. 48th St. Their son Charles is attending law school at M.U.



Purdy, '41



Robinson, '42

## '41

JOSEPH P. BLANK, Journ., Arts, lives at 2095 Van Courtlandt Circle, Yorktown Heights, N. Y.

JOHN GALBRAITH, BS BA, his wife Rosemary and daughters Rachel and Rebecca live at 1066 Argyle Dr., Oakville, Ont., Canada. John represents United Funds in that area.

STACY A. HAINES, Arts, has been named manager of business research for Sears, Roebuck and Co., Chicago. He is married to the former MARGARET P. PHELPS, BJ '41.

WILLIAM G. PURDY, BS CE, is with the Martin Company at Denver, where he has been general manager of launch vehicles and strategic systems. He recently assumed additional duties as executive director of technical operations.

WALTER L. SMITH, BS Agr., AM '51, and Mrs. Smith (MARY WILLIAMSON, AB '36) have become life members of the Alumni Association. They live in Columbia, Mo.

CHARLES WORSTELL, BS Agr. Eng., Ph.D. '65, is assistant professor of agricultural engineering at Idaho State University.

## '42

OID U. BAY, BS Agr., AM '52, was elected grand second vice-president of the national Alpha Gamma Rho fraternity. He and his wife (ELIZABETH J. HAMILTON, BS HE '40, AM '46) live in Ft. Collins, Colo., where he is regional editor of *Farm Journal*.

FRANK E. ROBINSON, BS Ed., M.Ed. '45, D.Ed. '55, is taking sabbatical leave from the State University of New York's College at Oswego and will be curriculum coordinator for industrial arts for the Armed Forces Dependents Schools in Europe. Dr. and Mrs. Robinson and their son Kim and daughter Kristie are living in Karlsruhe, Germany, for the year.

## '43

JOHN P. MIXNER, Ph.D., represented M.U. in the academic procession of

the Rutgers University Bicentennial Convocation on September 22. Dr. Mixer is professor of dairy science in the Rutgers College of Agriculture and Environmental Science, East Brunswick, N. J.

WARREN A. WELSH, BS EE, MS EE '47, has been named director of Information Systems Engineering of the Western Electric Company. His office address is 80 Mulberry St., Newark, N. J.

## '44

BERT J. GASTINEAU, BS EE, MS EE '49, has been appointed to the operations and systems analysis division of Aerojet-General Corporation, El Monte, Calif. He was manager of the astronics division at Aerojets's Von Karman Center, Azusa, Calif., before his new appointment. His wife is the former EVELYN BROOKS, Educ. '43.

## '45

Mrs. Andrew Sikyta (VELMA M. KRAMER), BS HE, is director of the Joplin, Monett, and Carthage divisions of the Gas Service Company's home economics department. She and her husband have three children.

JOHN R. SMART, Jr., M.Ed., has been appointed professor of education and head of the department of educa-

tion at Central Methodist College in Fayette. He and his wife own a farm near Fayette.

## '46

MARY ELIZABETH HARRIS, BJ, is a reporter for the *Muncie* (Ind.) *Evening Press*.

Mrs. HELEN MEANS Kreigh, BS Ed., AM '49, is librarian in the Mexico, Mo., elementary schools.

## '47

Dr. PAUL R. CASTER, M.Ed., D.Ed. '59, is president of Mineral Area College, Flat River, Mo. He was formerly superintendent of Jackson County, Missouri, R4 Schools.

GEORGE W. DENTON, AB, is vice-president of D. J. Lizotte Associates, New York City. He and his wife (BARBARA G. EMBLETON, AB '47) have three children.

Dr. HAROLD N. FOGEL, BS Med., is a pediatrician in Concord, Calif.

BYRON L. GREENBERG, Arts, is manager of the men's department at Streets Clothing Co., Tulsa, Okla.

DICK JOHNSON, Arts, is vice-president and sales manager for Boehok Engineering Company, Houston, Tex.



While many people are concerned with putting a tiger in the tank, four Missouri alumni have been keeping the Missouri Tiger on the television tube in Denver, Colo. Posing with a replica of the tiger are, from left: Jack Tipton, BJ '47, station manager, KLZ-TV; Hugh B. Terry, BJ '30, president and general manager, KLZ-TV-AM-FM; Evan Slack, BS Agr. '58, farm director for KLZ; and Carl Akers, BJ '48, KLZ newscaster.



G. H. HOWELL, BS BA, is general depreciation engineer for Illinois Bell Telephone Company. Mr. and Mrs. Howell and their children David and Mary live at 2708 Hartzell, Evanston, Ill.

JOHN J. SPANO, BJ, community relations manager in Monsanto Company's public relations department, has been accredited by the Public Relations Society of America. Mr. and Mrs. Spano (LOIS D. HEISINGER, BJ '47) live in Warson Woods, Mo.

## '48

JAMES G. BURGER, BS Agr., has joined Science Research Associates, Chicago, as a staff associate, and will represent the company in the Midwest. Mr. and Mrs. Burger and their four children live at Route 1, Washington, Mo.

BILL H. BOBBITT, BS CE, is western director for real estate and industrial development for The Milwaukee Road, with headquarters in Seattle. The Bobbitts live in Elgin, Ill.

MARTIN FIDERER, AB, is group product manager for antibiotic products for Pfizer Laboratories. Mr. Fiderer and his family live in Scarsdale, N. Y.

RALPH E. JONES, BS Agr., has been serving as community education advisor with the Agency for International Development in Pakse, Laos, since 1963. After joining AID in 1948 he served in Iran and in Libya.

BYRON McDANIEL, BS Agr., is purchasing agent and head of the estimating department for Smith-Grieves Company in Kansas City. The McDaniels have three children, and live in Leawood, Kan.

RAYMOND F. O'BRIEN, BS BA, is attending the advanced management program of the Harvard University Graduate School of Business Administration. His wife is the former MARY ANN BAUGHER, BS Ed. '48.

RICHARD L. PIEPENBRING, BS For., is with International Paper Company's Southern Kraft Division in Mobile, Ala. His wife is the former JO ANN BENEDICT, AB '48.

JAMES R. POLLARD, M.Ed., D.Ed. '56, is head of the department of education and psychology at Southwest Missouri State College, Springfield, Mo. He and his wife have two children.

NAPOLEON B. RAMSEY, BS BA, with Dow Chemical Company, is industrial chemicals sales manager for Latin America. He and Mrs. Ramsey (MARION J. KRISTON, Arts '49) now live in Miami, Fla.

## '49

SEYMOUR AMLEN, AB, is with the research department of ABC-TV, New York City.



Howell, '47



Burger, '48



Jones, '48



Fiderer, '48



Ramsey, '48



McDaniel, '48

LYNDEN E. ANDERSON, BJ, executive vice-president and creative director of Winfield Advertising Agency, Clayton, Mo., was a principal speaker at an advertising workshop held in Chicago in July.

DON BLOCK, BS Agr., has joined the Missouri Farm Bureau Federation's commodity department as a poultry and turkey marketing specialist. He and his family live in Springfield, Mo.

SID DARION, BJ, is head of the American Broadcasting Company's special events unit, New York City. His wife is the former ESTELLE TREICH, Arts '49.

F. R. DAWSON, BS BA, is a marketing team manager with Xerox Corporation. He and his wife and seven children live in Port Washington, N. Y.

Mrs. G. R. EISENHAUER, Jr. (BEBE BERENSON), AB, has been elected a member of the Nyack (N. Y.) Public Schools Board of Education. She is the first insurgent candidate to win in Nyack

history, and the first woman to serve on the Board since the 1940's. She and Mr. Eisenhower (BS PA '52) have four children.

ED GLASER, BS For., MS '50, is author of a recent article in the *Missouri Conservationist* on plans for development of the Meramec Basin. His wife is the former JUNE ARLENE FRIESZ, BS HE '50.

R. CROSBY KEMPER, Jr., Arts, has been named president of the City National Bank and Trust Company, Kansas City.

MARSH LAUMER, AB, is teaching in Kowloon, Hong Kong. His address there is 6 Tak Hing St., Flat 3a.

ROBERT H. PASCHAL, BS CE, has been named general manager and chief engineer of the Fort Worth and Denver Railway at Fort Worth, Tex. His wife is the former CAROLYN J. SMITH, BJ '51.

ROBERT PETTIT, AB, LL.B. '52, is a claim representative for State Farm Insurance, St. Louis.

J. M. SHAVER, Jr., BS BA, has been elected director of the New York chapter of the National Association of Accountants. He works for Standard Oil Company of New Jersey in New York City.

HOWARD M. STRICKLAND, BS BA, has been named controller of Interstate Securities Company, Kansas City. His wife is the former LEOTA JEAN GARR, BS Ed. '49.

MAURICE D. WALSH, Jr., BJ, is head librarian for Jefferson Parish, Louisiana. He lives in Metairie, La.

LES C. WEBB, Jr., BS Ch.E., has been named engineer in charge of design of water treatment facilities in the power division of Black & Veatch, consulting engineers.

## '50

NELSON D. ARNEY, M.Ed., is coordinator of the student work program and director of placement at the School of the Ozarks, Point Lookout, Mo. Mr. and Mrs. Arney have two children.

TOM BAKER, BS Agr., is with Baker Equipment and Supply Company, St. Louis.

DON JOHNSON, BS BA, and Mrs. Johnson (HELEN E. LLOYD, BS HE '47) live at 35 Bryanston Square, London W1, England.

WALLACE LIECHTI, BS For., is the Oklahoma land manager for Dierks Forests, Inc., and lives in Idabel, Okla.

FRED MCKENZIE, BS BA, is marketing team manager at Xerox Corporation's Long Island branch. He and his wife and four children live at 16 Binker Light Rd., Stony Brook, N. Y.



Kemper, '49



McKenzie, '50

HARRY B. MORAN, BS For., is Farm Forester at Lebanon, Mo.

JAMES W. (Jim) WALKER, BS For., is vice-president, photogrammetry, with Surdex Corporation, St. Louis.

ORVILLE WILSON, BS For., is assistant superintendent in charge of timber management, Custer State Park, S. D.

ART WISKARI, BJ, is manager of the Chicago bureau, ABC News.

Maj. RICHARD C. WOODSON, BS BA, stationed at Phan Rang AB, Vietnam, has been awarded the U.S. Air Force Commendation Medal.

## '51

OSCAR L. BENSON, BS Agr., MS '62, has been appointed assistant advertising manager of Chemagro Corporation in Kansas City. He lives with his family at 1208 Westboro Rd., Liberty, Mo.

ELMER BULLARD, BS Ed., M.Ed. '53, is internal control director for State Farm Insurance Companies. He lives in Columbia.

"Spud" CHANDLER, BS For., is now chief of the land adjustment staff, Office of the Director, Bureau of Land Management, U.S. Department of the Interior in Washington, D. C. His wife is the former VELMA JEAN BREWER, Agr. '51.

PATRICIA CHAPMAN, BJ, is feature editor of the *Star-Ledger*, Newark, N. J.

GARLAND DOUGLAS, LL.B., is now municipal judge in Neosho, Mo. He and his wife have a son, David.

E. B. EFFREIN, BS BA, lives at 135 S. La Salle St., Chicago, and has become a life member of the Alumni Association.

JAMES GROSS, BS BA, who is with Mar-Tee Originals, has been elected treasurer of the Associated Garment Industries of St. Louis.

ROBERT KOCHER, AB, AM '52, has been appointed chairman of the art department at Coe College, Cedar Rapids, Iowa. He and his wife have three children.

ROBERT LOGGIA, BJ, plays the title role in a new NBC-TV series this fall, "T.H.E. Cat."

JAMES D. (Jim) MABRY, BS For., is in charge of procurement for the Koppers Company in Arkansas and northern Louisiana.

JERALD G. MOLLESTON, BS BA, and Mrs. Molleston (SALLY LOU CHOATE), BJ, have become life members of the Alumni Association. They live at 2 Country Club Dr., Newport, Ark.

Dr. NORMAN PICK, BS Agr., is in charge of veterinary services for Wilson Meat & Food Products Division of Wilson & Co. His wife is the former MARYLYN J. MERSHON, BS HE '50.

RUDOLPH H. REITZ, AB, is a salesman for Modern Jr., New York City.

JAMES C. (Jim) SMITH, BS For., is plywood sales manager for a branch of the Long-Bell Division of International Paper Company in Veneta, Ore.

ELIZABETH SPENCER, M.Ed., is associate professor of education, psychology, and special education at Ball State University, Muncie, Ind.

JACK T. STEVENSON, BS Ag.E., is a procurement engineer with the U.S. Army engineering research and development laboratory in Ft. Belvoir, Va.

ROBERT E. WAHLSTROM, AB, MS '56, is an account executive with Walston & Co., St. Louis.

PAUL WEISMAN, BS PA, St. Louis, is a general agent for Capitol Life Insurance Company and a member of that company's Gold Crown Club.

## '52

EDWARD G. ADAMEK, Jr., M.Ed., is professor of education at Wayne State University. Dr. Adamek is presently chairman of the department of guidance and counseling.

BILL ALEXANDER, BS BA, is with Bruce Brewer Advertising Corporation in Kansas City.

GEORGE A. ANDERSON, AB, has been promoted to Class 4 in the U.S. Foreign Service. He is now serving as labor attaché and second secretary of the U.S. embassy in Oslo, Norway. He and Mrs. Anderson have five children.

FREDERICK A. ARCHER, BS BA, has received the degree of Master of Theology from Southwestern Baptist Theological Seminary.

KENNETH EGGERS, BS For., now lives in Placentia, Calif., where he is with Western Electric Company.

Cmdr. CHARLES L. ELLIOTT, BS BA, who has been serving with the Navy overseas, was recently reassigned to the States.

RALPH T. HAENISCH, BS BA, Kansas City, manager of marketing research for Western Auto Supply Company, has been appointed international chairman of the new chapter development committee of the American Marketing Association. His wife is the former SARA LEE SMITH, BS HE '52.

ERNST HERZWURM, BS For., has been promoted from captain to major, U.S. Air Force, and is now stationed in Tampa, Fla.

TERRIL HIGDON, BS Agr. (WD), MS '53, was inaugurated as president of Graceland College, Lamoni, Iowa, on October 15. Mrs. Higdon is the former BARBARA J. McFARLANE, AB '51, AM '52, Ph.D. '61.

RICHARD ILLINIK, BS For., is forester for the Thureson Lumber Company, Howell, Mich.

Maj. DONALD OTTOMEYER, BS For., is assistant professor of military science, Western Michigan University, Kalamazoo, Mich.

Dr. GEORGE S. REUTER, Jr., D.Ed., became the first president of Sioux Empire College, Hawarden, Iowa, when it opened in September. Dr. and Mrs. Reuter have three sons, all of whom are university graduates.

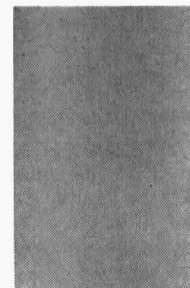
KENNETH J. WILSON, BS Ed., has been named controller of the Westinghouse General Control Division at the Cheektowaga (N. Y.) plant. He and his wife and three children live at 161 Maple Dr., Orchard Park, N. Y.



Reuter, '52



Benson, '51



Wilson, '52

FRANK B. PALLO, BS For., is chief of the recreation staff, Portland Service Center, Bureau of Land Management, and lives in Portland, Ore.

## '53

Maj. JAMES F. DeMOOR, BS For., has been transferred from Vietnam to Norfolk, Va., where he is staff intelligence officer, Atlantic Fleet Headquarters.

HOWARD T. ADKISON, Agr., of Kansas City, has become a life member of the Alumni Association.

DAVE LIPMAN, BJ, has been appointed assistant sports editor of the *St. Louis Post-Dispatch*. He and his wife and two children live in Creve Coeur, Mo.

JOHN W. MEGOWN, AB, MS '55, manager of nutritional services with Morton Salt Company, Chicago, is a member of the board of directors of the National Feed Ingredients Association.

## '54

OWEN S. (Sam) ARD, BS BA, recently joined the Kansas City, Kan., Chamber of Commerce, where he will be in charge of economic development. His address is 5715 Georgia, Kansas City, Kan.

CLIFFORD BISWELL, BS For., MS '66, is now assistant state forester, Kansas State University.

ALVIN GANN, BS For., is sales representative for Investors Diversified Services, Inc., and lives in Ellington, Mo.

JOHN H. HILDEBRAND, Jr., BS Agr., MS '61, of Columbia, has been named community shelter planning officer of the Missouri civil defense agency.

OLIVER HUBBS, BS For., is assistant principal, Grace Christian Schools, Knoxville, Tenn. His wife is the former BOBBY JO SMITH, Nurs. '53.

F. ARTHUR LEASON, BS, MS '63, has joined Armstrong Cork Company's research and development facilities in Lancaster, Pa.

Maj. EDWARD E. RODERICK, BS Ed., returned from Vietnam in July and has been transferred to Ft. Leavenworth, Kan. While in Vietnam, Maj. Roderick received the Purple Heart, the Bronze Star, and the Vietnamese Medal of Honor. Mrs. Roderick is the former CAROLYN F. ENGLISH, BS Ed. '54.

LUTHER DEAN STATLER, BS For., MS '60, is director of the East St. Louis campus of Southern Illinois University and lives in Edwardsville, Ill.

WEBB STEVENSON, BS Agr., is with the Anderson-Hopkins-Wallace Insurance Agency in St. Joseph, Mo. He and his wife have one son.

## '55

CHARLES H. BOBO, AB, BJ, is editor of *Linen Supply News*, and lives in Homestead, Fla.

LEE BOECKSTIEGEL, BS For., is ranger for the Detroit district of the Willamette National Forest. He and his wife (KATHLEEN L. McGREW, BS Agr. '54, AM '55) live in Detroit, Ore.

DAVID CLICK, BS For., is deputy state forester in the newly created Indiana Department of Natural Resources.

Capt. JOSEPH P. CLINE, BS BA, an F-4c Phantom aircraft commander, is on duty at Cam Ranh Bay AB, Vietnam.

Dr. R. DALE DICK, AM, Ph.D. '58, became dean of the School of Graduate Studies of Wisconsin State University, Eau Claire, Wis., in September. His wife is the former BEVERLY ANN SPARKS, AM '58.

HOMER HODSON, BS, has been appointed manager of chemical product development for the Toni Company, Chicago. He and his wife live in Homewood, Ill.

GUY T. ROSE, BS BA, has been named second sales manager of the St. Louis area for McDonnell Automation Center.

Capt. ROBERT D. SWEENEY, BS BA, has been awarded the Air Medal for meritorious achievement during military flights in Vietnam. He is now assigned to Mather AFB, Calif. His wife is the former JOYCE E. MYERS, BS Ed. '54.



Megown, '53



Hodson, '55



Bobo, '55



Williams, '55

KENNETH A. THORP, BS BA, is manager for the Pacific Mutual Life Insurance Company in St. Louis.

DAN D. WILLIAMS, BJ, is sales promotion manager for Baxter Laboratories. He and his wife and son live in Elmhurst, Ill.

BYRON WOLVERTON, BM, AM '56, recently received his doctorate in musicology from Indiana University. He now teaches piano and music history at Southwest Texas State College in San Marcos, Tex.

## '56

Maj. LOY D. BROWN, BS Agr., has been reassigned from Vietnam to Maxwell AFB, Ala.

GENE W. GREY, BS For., is assistant state forester at Kansas State University, Manhattan, Kan.

BYRON H. NOLTE, BS Ag.E., MS '63, is agricultural engineer, soil and water area, for the Ohio Cooperative Extension Staff. His wife is the former ARDITH KNAPHEIDE, Nurs., '60.

ROBERT M. WALLACE, BS BA, is manager of the American Express office in Clayton, Mo. His wife is the former CAVERLY ANN SCOTT, Journ., Arts '56.

## '57

J. L. BEVERS, BS BA, has been promoted to manager of the midwestern district of Graybar Electric Company. He lives in Kansas City, Mo.

KEITH BOYER, BS Agr., is a technical representative with Shell Agricultural Chemical Company. Mr. and Mrs. Boyer (RUTH ANN COLTON, Educ. '56) and their four children have moved to Omaha, Neb.

Lt. Cmdr. RONALD M. BUFFINGTON, BS CE, has been appointed head of the officer training section of the Environmental Science Services Administration of the U.S. Department of Commerce. Classes are conducted in Norfolk, Va., at the Atlantic Marine Center of the Coast and Geodetic Survey, an ESSA agency. Buffington and his wife live in Virginia Beach, Va.

S. T. CARRON, BS For., is manager of Cattlemen's Steak House in Dallas, Tex.

ALEX COLE, BS For., MS '60, holds an NDEA fellowship at Duke University, where he is working toward a doctorate. His wife is the former MARY LEE SCHREEN, BS Ed. '57.

WAYNE ECKLES, BS For., is branch manager of Wilson and Toomer Fertilizer Company, Lake Wales, Fla. His wife is the former DORIS DEANE WYATT, BS Nur. '56.





Buffington, '57

Dr. VIRGIL L. FERGASON, BS Agr., MS '60, Ph.D. '64, is industrial plant breeder of chemurgentics for Bear Hybrid Corn Company, Decatur, Ill. He and his wife and two children moved there recently from Columbia, where he was on the M.U. faculty.

RICHARD HAWKINS, BS For., was recently promoted from assistant to associate civil engineer with the California Department of Water Resources. He and his wife (PATRICIA O. BECKER, BS Ed. '59) now live in Sacramento, Calif.

ROBERT E. LUSK, BS BA '51, AB '54, LL.B., is manager of area civic affairs for Trans World Airlines, Kansas City.

NATHAN NELSON, BS For., is a salesman for United States Gypsum Company. He lives in Clay, N. Y.

JOHN WILLIAM ROGERS, BS BA, has become a life member of the Alumni Association. He lives in Milan, Mo.

JAMES T. (Jim) SEABAUGH, BS For., has been transferred from Mill City to Eugene, Ore., to become forester, Willamette National Forest. His wife is the former HELEN E. SHOFSTALL, BS HE '55.

JOHN STRICKLER, BS For., is associate state forester at Kansas State University. His wife is the former JOAN C. MULHOLLAND, BJ '57.

JERRY TAMM, BS For., is a pilot for Trans World Airlines, Kansas City.

GLENN C. (Skip) TROELSTRUP, BJ, may be reached through *U.S. News & World Report*, Chief of Bureau, 330L Clemenceau, Singapore. He reports that he has been active on the trials and tribulations of Sukarno.

WILLIAM C. (Bill) WITTMAN, BJ, is public relations director for Children's Mercy Hospital, Kansas City. He was recently elected to the board of directors of the American Society for Hospital Public Relations Directors.

LARRY ZIMMER, BJ, has become sports director for WAAM radio station, Ann Arbor, Mich. He was formerly

sports and promotion director for KFRU in Columbia.

## '58

CLETUS BOOKHOLTZ, BS For., is a store manager for Kroger Company, and lives in St. Ann, Mo.

JACK BOOTH, BS For., is staff assistant at the Shoshone National Forest, Cody, Wyo.

Capt. ROBERT R. BRYSON, BS ME, was graduated from the Air University's Squadron Officer School, Maxwell AFB, Ala., in August, and assigned to Edwards AFB, Calif.

JOSEPH A. BURNSIDE, BS BA, is regional manager in northeast Missouri for the Maytag Company. He and his wife live in Hannibal, Mo.

LAWRENCE S. FRIEDMAN, AB (WD), received a Ph.D. degree from the University of Iowa in August.

DAVID GANSNER, BS For., is a resource analyst with the Northeastern Forest Experimental Station in Illinois.

LEE HESSLER, Eng., Arts, is market and financial analyst for the Aetron Division of Aerojet-General. He and his wife Kathleen have a new home in Claremont, Calif.

ROBERT M. LAVAL, BS For., is ranger for the Caney district of the Kisatchie National Forest, with headquarters at Homer, La.

Mrs. William C. McLaughlin (RUTH M. HOFFMAN), AB, BJ, is a reporter for the *Washington Post*, Washington, D. C.

Capt. ROBERT MOOSE, BS For., is on the ROTC staff at Arkansas Polytechnic College, Russellville, Ark.

CARL R. NELSON, MS, teaches at California State Polytechnic College, San Luis Obispo, Calif., and recently received the American Dairy Science Association Teaching Award.

P. E. PAYNE, BS BA, of Memphis, Mo., has become a life member of the Alumni Association.

BART W. RICHARDSON, BJ, is an account executive with the Ranney Company, a San Francisco public relations firm. He and his wife (CAROL ANN EDDINGTON, BJ '58), live in Woodacre, Calif.

MASON W. SITZES, BS For., has been transferred by the Weyerhaeuser Company from Wauwatosa, Wis., to Kansas City, Mo. He is manager of the company's new distribution center there.

ALAN D. SKOUBY, BS EE, is one of six Ph.D. candidates to receive a Stanford-Sloan Fellowship for study at Stanford University's Graduate School of Business during 1966-67.

TIMOTHY M. SMITH, BS For., is ranger of the Ocee district of the Cherokee National Forest, with headquarters at Benton, Tenn.

Lt. Cmdr. CHARLES K. TOWNSEND, BS CE, is commanding officer of the U.S. Coast and Geodetic Survey ship *Peirce*, which recently left Savannah, Ga., to resume surveys of the continental shelf off the southern Atlantic Coast. Townsend and his wife have two children.

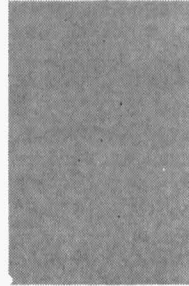
JOHN D. WOERHEIDE, BS For., is assistant ranger of the Coyote district, Santa Fe National Forest, with headquarters at Coyote, N. M.



Burnside, '58



Townsend, '58



Burford, '59

## '59

RICHARD C. BEVARD, AB, has joined Great Western Financial Corporation in Beverly Hills, Calif., as a public relations representative.

MARVIN E. BURFORD, BS BA, is a regional manager with the Maytag Company in northwest Washington.

PAUL F. COLVIN, BS For., is assistant chief forester, Fort Campbell, Ky., and lives in Hopkinsville, Ky.

Dr. WILLIAM D. EICKHOFF, BS Agr., MS '60, is supervisor of marketing research in the economic and marketing research department of Ralston Purina Company, St. Louis. He was formerly research assistant and instructor at Ohio State University, where he received his Ph.D. degree.

LARRY GANN, BS For., is agency manager for College Life Insurance Company in Kansas. He lives in Manhattan, Kan.

Capt. MARVIN F. GOLDSTEIN, AB '56, M.D., a Kansas City ophthalmologist, is now on military duty at the 85th Evacuation Hospital at Qui Nhon, Vietnam. In addition to caring for wounded Americans, Dr. Goldstein visits a local hospital twice a week and a nearby leprosarium once a week. He writes that he has done numerous cataract operations and other forms of ocular surgery on Vietnamese civilians and is trying to set up a program whereby he can start doing corneal transplants. "Medicine seems to be a universal language that almost everyone understands. The 'bac si' (doctor) is one of the most revered persons in a Vietnamese community." Mrs. Goldstein is the former CAROL SUE POSNER, BS Ed. '61.

RICHARD L. JOURDEN, BS For., is work program officer with the U.S. Forest Service at Alpine, Ariz.

Dr. DAVID A. LEE, BS EE, is with the applied mathematics research laboratory of Aerospace Research Laboratories at Wright-Patterson AFB. He is currently working in the field of statistical theory of inhomogeneous turbulence.

LEON LICHTERMAN, BS For., is underwriting supervisor, commercial fire and inland marine policies, for Safeco Insurance Group and lives in Florissant, Mo.

Capt. DAVID D. McGUIRE, BS ME, is a detachment commander with the Pacific Air Forces in Vietnam. His wife is the former SHARON RUFF, Arts '60.

HOWARD W. RICE, BS For., is an assistant on the staff of the Siuslaw National Forest, with headquarters in Corvallis, Ore.

GEORGE RINARD, BS EE, MS '61, Ph.D. '65, assistant professor of electrical engineering at the University of Denver, did research work with the Martin Company, Denver, during the summer. Mrs. Rinard is the former VIRGINIA CAROL GOULD, BS HE '61.

DONALD ROLLENS, BS For., is deputy forest supervisor of the Huron-Manistee National Forest, with headquarters in Cadillac, Mich.

DAVID G. SNIDER, BS CE, is senior traffic engineer for the city of Des Moines, Iowa. He is married and has two daughters.

EDWARD L. WYATT, BS CE, recently joined the Dixie Form and Steel Company. He and his wife (ELIZABETH A. SPRINKLE, BS Ed. '59) and son live in San Antonio, Tex.

C. B. TOWN, BS BA, is Indianapolis branch manager for Kaiser Aluminum &



Gauntt, '60



Hoff, '60

Chemical Sales. His wife is the former CAROL L. MEFFORD, BS Ed. '59.

## '60

ELLIS R. BROCKMAN, AM, Ph.D. '64, and Mrs. Brockman (ROBERTA ANN YEHLING), BS Ed. '60, AM '62, have become life members of the Alumni Association. They live in Rock Hill, S. C.

Capt. SAMUEL BYLAND, M.D., is stationed at the 36th Medical Evacuation Hospital in Vung Tau, Vietnam. Dr. Byland recently performed an operation which saved the sight of a 2-year-old Vietnamese girl whose eye had been cut with a knife. The injury was found by an Australian medical unit.

CHARLES (Chuck) EHLERT, BJ, has become news editor for Ozark Airlines, St. Louis. He will edit the company's employee publication and do public relations work.

DON FARMER, BJ, is a network correspondent for ABC News, New York. His wife is the former DEANN NIEDFELDT, BJ '62.

Dr. BOB J. FOUTES, M. Ed., D. Ed. '63, is superintendent of schools in the Pattonville district, and lives in Center, Mo.

GARY GAUNTT, AB, is a flight officer for American Airlines. He lives in Boston, Mass.

2nd Lt. WILLIAM V. GROTHE, Jr., Eng., received his pilot wings at Vance AFB, Okla., this summer, and was assigned to Ramstein AB, Germany.

RAY HALL, BS For., is ranger for the Greybull district, Shoshone National Forest. His wife is the former JOY D. NEWCOMER, BS Ed. '60.

DANIEL G. HAYS, AB(WD), AM '62, is studying computer techniques for linguistics at the RAND Corporation, Santa Monica, Calif., under a National Science Foundation grant. Hays will investigate programs for analyzing protocols of spoken language while at RAND.

FRANK HOFF, BS EE, is manager of the Electronics Group (electronics and

telemetry divisions) of Brown Engineering Company, Huntsville, Ala.

Mrs. SANDRA POLSKY Leitner, AB, is director of information for the Texas division of the American Cancer Society and lives in Austin, Tex.

CHARLES A. LESH, BS Agr., has received a master of arts degree from Ohio State University.

ROWE L. MORTIMER, AB, AM '64, has received a Ph.D. degree from Ohio State University.

NORMAN N. SCHUNEMEYER, BS Agr., is in training at Swift & Company's Chicago office.

Rev. and Mrs. Ivan Gunderman (SALLY SCHUPPAN, BS BA) are living in Marseilles, Ill.

LARRY D. STONE, BJ, is associate editor of the *American Paint Journal*, and currently president of the Junior Advertising Club of St. Louis.

Dr. KENNETH R. STORCH, BS Agr., D.V.M. '65, is associated with two other veterinarians in a small animal practice in Seattle, Wash.

Dr. FRANK A. TILLMAN, BS IE, MS '61, has been appointed head of industrial engineering in the College of Engineering at Kansas State University, Manhattan. Dr. Tillman and his wife have three daughters.

MICHAEL G. ZIPKIN, AB '57, LL.B., is supervisor in the claim department at the Omaha, Neb., casualty and surety division office of Aetna Life & Casualty.

## '61

Mrs. BARBARA ECKLEY Baker, BS Ed., is teaching mathematics at Hardin Junior High School in Mexico, Mo.

TERRY R. CAIN, BS Ed., M. Ed. '62, is principal of North Callaway R-1 High School, Auxvasse, Mo.

Lt. HARDY CARL, BS Ed., is serving aboard the *USS Independence* as a pilot in Fighter Squadron Forty-One. He is a combat veteran of Vietnam.

BOB CROZIER, BS For., is an entomologist with the Boyce Thompson Institute and lives in West Lafayette, Ind.



Carl, '61



Thompson, '61



Moran, '62

ROBERT A. FALLERT, II, BS For., is a graduate research assistant in forestry at Purdue University.

PAT HOWLE, BS Ed., was recently promoted to the rank of captain, U.S. Marine Corps. His wife is the former BARBARA RUTH KRAUS, BS Ed. '64.

Capt. RUSSELL C. JOHNSON, BS Ag.E., a graduate of the Air University's Squadron Officer School at Maxwell AFB, Ala., is assigned to Kelly AFB, Tex.

DAVID KLINE, BS For., is district ranger for the U.S. Forest Service in Fredericktown, Mo.

Dr. TERENCE O. MOORE, AB, AM '63, Ph.D. '66, is with the National Aeronautics and Space Administration, and will do research in man's reaction to environmental extremes. He and his wife are living in Honolulu, Hawaii.

BOB PARNELL, BS For., is district forester with the Kentucky Division of Forestry and lives in Prestonsburg, Ky.

ROBERT SILVER, BS Ed., teaches mathematics and is the track coach at Fulton (Mo.) High School.

CHARLES E. (Skip) SNYDER, BS BA, has been appointed assistant general agent at the Max D. Shriver general agency of Aetna Life & Casualty in Kansas City. His wife is the former MARSHA JEANIE ARNI, Educ. '61.

DAVID SPELLMAN, BS For., AM '63, teaches at Rockhurst College in Kansas City.

J. DOUGLAS STINSON, BS Agr., M. Ed. '64, is principal of the Parma, Mo., high school.

THOMAS G. THOMPSON, BS BA, was recently promoted to the position of market analyst with the Buick division of General Motors and has been transferred to the main offices in Flint, Mich. He and his wife, Nancy, have three children.

Lt. WALTER RAY VICKERY, BJ, has completed two tours of duty in the Vietnam area as pilot aboard the *USS Ranger* and the *USS Enterprise*. His new assignment is that of naval plant representative at the McDonnell Aircraft Cor-

poration plant in St. Louis. His wife is the former JUDITH A. SAPPINGTON, AB '62.

ALBERT (Al) R. VOGT, BS For., MS '62, has received his Ph.D. degree and is a tree physiologist with the Ohio Agricultural Research and Development Center at Wooster, Ohio.

LELAND WILKINS, BS For., is assistant ranger with the U.S. Forest Service at Vienna, Ill.

## '62

RICHARD L. BROWN, AM, is band director and professor of music at Lambuth College, Jackson, Tenn. He and his wife have two children.

SYDNEY CHIPMAN, BS ME, is a management intern with the U.S. Department of the Navy.

DANIEL P. FANNING, MS, represented the University of Missouri on October 15 at the inauguration of Ray Lorenzo Heffner as president of Brown University, Providence, R. I.

Capt. JOHN C. FISHER, BS Agr., is attending the Air University's Squadron Officer School at Maxwell AFB, Ala. He was previously assigned as a missile launch officer at Whiteman AFB, Mo.

ROY LEE HENSON, BS For., is a timber management assistant with the U.S. Forest Service at Greenville, Calif.

Dr. CHARLES A. HEWETT, Ph.D., is an associate professor of physics at the Rochester Institute of Technology, Rochester, N. Y. He and his wife (GLORIA J. LAWRENCE, BS '60) have two children.

JERRY ISAACS, BS Agr., has been appointed as a farm manager for Doane Agricultural Service. He will work out of the Mexico, Mo., office.

Dr. GARY S. ISAACSON, AM, Ph.D. '66, is a clinical psychologist and assistant professor of psychology at Knox College, Galesburg, Ill.

Lt. THOMAS J. McCLARD, BS BA, has been awarded the Distinguished Flying Cross for heroism in combat over North Vietnam. He is now serving in the Mediterranean aboard the *USS Saratoga*.

WILLIAM J. MORAN, Jr., BJ, is information services manager for TRW, Inc., Cleveland, Ohio. He was formerly managing editor of *Purchasing Week* magazine in New York City.

JIM NATTINGER, AB, who has been teaching English at the North American Institute at Barcelona, Spain, for the past two years, is now working on his Ph.D. at the University of Michigan.

ROBERT L. PRATER, D. Ed., is a professor at the School of Industries of Texas Southern University, Houston, Tex. He was formerly at Alcorn A & M College, Loman, Miss.

Lt. LOREN W. REYNOLDS, BS Ed., was graduated August 5 from the Air University's Squadron Officer School at Maxwell AFB, Ala. His wife is the former DONNA KAY SMALL, AB '61.

SARAH LOU TIDWELL, BS Ed., is director of women's physical education programs at Jefferson College, Hillsboro, Mo.

Lt. FRED R. WRINKLE, AB, was recently graduated from the Air University's Squadron Officer School at Maxwell AFB, Ala. He has been assigned to Lockbourne AFB, Ohio, for duty.

## '63

TOM CAMPBELL, Jr., BS BA, is deputy county auditor of Black Hawk County, Iowa.

LELAND COONCE, BS For., is a timber management assistant with the U.S. Forest Service at Downieville, Calif.

BETTY EASTER, BS Ed., has received a \$3,000 National 4-H Fellowship to study for one year in Washington, D. C. She has been an extension home economist in Caldwell County, Mo.

Mrs. Robert J. Felling (KATHERINE ANN OTTO), BS, is a chemist with the scientific investigation unit of the Independence, Mo., police department. Husband Bob (BS Ed. '59, M. Ed. '63) is track and football coach at Truman High School.

ALAN R. HAVIG, AM, is an instructor in history at Oberlin College, Oberlin, Ohio.

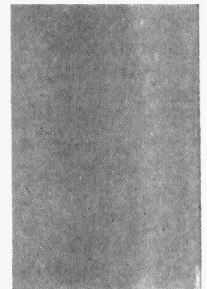
GORDON G. HILL, BS EE, is central regional sales manager for Milgo Electronic Corporation. He and his wife and two children live in Arlington Heights, Ill.

Lt. (j.g.) J. P. LAING, BS BA, is officer in charge of a PFC or "Swift Boat" operating out of Danang and Chu Lai, South Vietnam (PFC Division 102, Box 88 NSA, APO San Francisco 96337). He looks forward to receiving the football letters again this season.

Mrs. ROSEMARY CHAPPEE Laughlin, AM, is assistant professor of art and chairman of the art department at Bethany College, Lindsborg, Kan.



Hill, '63





Dr. SUSAN M. MECKFESSEL Hartmann (Mrs. C. Hartmann, Jr.), AM, is an assistant professor of history on the evening division faculty of the M.U. campus at St. Louis.

RAYMOND A. PFLUEGER, BS BA, is with the Robert B. Qualy agency of the Northwestern Mutual Life Insurance Company, St. Louis. His wife is the former MELBA L. COUNTS, H.Ec., Educ. '63.

PHILIP SEMSCH, AM, has been promoted to the rank of lieutenant colonel. Col. Semsch is on the staff of the U.S. Commander, Berlin. He was an associate professor of military history at M.U. from 1960 to 1964.

JAMES SIMMONS, MS, is administrative officer and research meteorologist on the staff of the Institute of Atmospheric Sciences at the South Dakota School of Mines and Technology, Rapid City, S. D. He was formerly an associate professor of aerospace science at M.U.

Mrs. Dewey Standley (JUANITA JUNE KIRKER), BS BA, teaches fifth grade at Ruskin Heights elementary school in Lee's Summit, Mo.

RODNEY F. WEIHER, AB(WH), has received a doctorate in economics from the University of Virginia and is now a defense economist with the Center for Naval Analyses in Arlington, Va.

## '64

HARRIET BEATTY, BS Ed., completed 10 weeks of Peace Corps training at San Diego State College, San Diego, Calif., and has been assigned to Jamaica.

DAVID DRUMMOND, BS For., is a research assistant in the Center for Air Environment Studies at Pennsylvania State University.

DAVID V. FOX, AB, has joined Batz-Hodgson-Neuwoehner, advertising and marketing agency in St. Louis, as an accountant executive. He was formerly an editor with the public relations department of Armstrong Cork Company, Lancaster, Pa.

JAMES C. (Jim) GEISLER, BS For., is an area extension forester with Kansas State University and lives in Parsons, Kan. His wife is the former ELLA M. JUEDEMANN, BS Ed. '63, M. Ed. '64.

AL GOWAN, AB, is an assistant professor in the department of art and design at Purdue University, West Lafayette, Ind. He teaches advertising design and typography. Gowan previously taught advertising design at Indiana University.

Lt. GUY HACKMAN, BS ME, was recently discharged from the U.S. Army and is a quality control engineer for General Electric. Lt. Hackman served in Vietnam as an aerial artillery observer at Phu Loi AB, near Saigon. He and his wife live in Mattoon, Ill.



McDonald, '64



Gowan, '64



Miss Beatty, '64



Zumwalt, '64

F. DOUGLAS JOHNSON, AM, is an instructor in the department of mathematics at the University of Denver. His wife is the former CAROLYN RUTH NICHOLS, AB '64.

Dr. WALLACE McDONALD, Med., received his M.D. degree in May from the University of Pennsylvania School of Medicine and is interning at San Francisco General Hospital. His parents, Dr. WILBUR McDONALD (AB '33, BS Med. '35, AM '35) and Mrs. McDonald (ELEANOR TRACHSEL, BJ '34) live in St. Joseph, Mo.

ROGER L. RATH, AB, received an M.F.A. degree from the University of Iowa in August. He is married to the former ANN KAY SIMS, AB '63.

Mrs. SHARON POAGE Brown, BS Ed., is teaching science in the Fulton, Mo., junior high school. Her husband is working toward his degree in electrical engineering.

JIMMY JOE ROBINSON, Grad., is assistant county agent in Craighead County, Ark., with headquarters in Jonesboro. He received a BS in agriculture from Arkansas State College.

Lt. VINCENT L. SCHAUTZ, BS BA, M.B.A. '65, has been reassigned to the artillery and missile school at Ft. Sill, Okla., after serving for eight months in Baumholder, Germany.

Mrs. Bruce M. Smith (ALLISON M. LONDON), BS Ed., writes to say that her husband has received his D.D.S. degree from the University of Missouri at Kansas City, and is practicing in West Plains, Mo.

Mrs. WINIFRED SLEIGHT, AB, is elementary and junior high library supervisor for the Fulton, Mo., schools.

JIM STEELE, BS IE, MS '65, is an advanced technical analyst in the management science division of business systems at John Deere & Company, Moline, Ill. His wife (KATHRYN LEE KORDES, BS '64) is completing her MS in chemistry at the University of Iowa.

WALTER THIES, BS For., is a graduate assistant at the University of Wisconsin. He and his wife visited the School of Forestry in June.

JOSEPH A. WESSING, BS Agr., left for Peru in August to work with the Fathers from the Catholic Diocese of Jefferson City who are doing missionary work there. He will spend some time in Lima, and then go to Puno, where he will work with the Indians. Wessing was formerly with the Production Credit Association of Boonville.

JOHN R. YOUNG, AB, is a sales representative for Standard Oil in Dallas, Tex. He and his wife live in Fort Worth.

GARY DALE ZUMWALT, BJ, is in Brazil as a photo-journalist for the Methodist Board of Missions. He was formerly on the staff of the Jam Handy Organization in Detroit.

## '65

Mrs. CAROLYN SAPP Allee, BS Ed., is teaching fifth grade in the Kansas City R5 School District. She and her husband, Norris, have just bought a new home.

H. STEVEN BARNEY, BS For., is sales analyst with the unit structures department of the Koppers Company in Raleigh, N. C.

JOANNE ALLEY Beebe (Mrs. Raymond C.), M. Ed., is one of 18 Kansas City teachers on the staff of James Elementary School, operated as part of a fellowship program at the University of Missouri in Kansas City to test new methods of instruction in the elementary schools.

ELEANOR BRAND BRAVERMAN, AB, is a technical assistant in the department of biochemistry at the University of Alabama Medical School, Birmingham, Ala.

Dr. B. M. CARNALL, BS For. '54, M.D., is practicing in Camdenton, Mo. He recently completed his internship at St. Louis County Hospital.

CLEDITH DAVENPORT, BS For., is now technical forester, Millicoma Forest, Weyerhaeuser Company, at North Bend, Ore.

IRVIN W. DAVENPORT, M. Ed., is principal of the J. Minnie Smith Elementary School in Poplar Bluff, Mo.

ALAN O. DUNKIN, BS, is a physicist with the Geotech Division of Teledyne

Industries at the Wichita Mountains Seismological Observatory. He lives in Lawton, Okla.

STEVEN M. EVANS, BS Ch.E., is with the B. F. Goodrich Chemical Company plant in Henry, Ill., and notes that they produce poly vinyl chloride (PVC).

TOM R. FLEMING, BS Ed., and his wife are both teaching in the Hannibal, Mo., schools. Tom is an assistant football and track coach and also teaches biological sciences.

2nd Lt. RONALD W. FRIESZ, AB, is stationed at Otis AFB, Mass. He recently received his pilot wings at Webb AFB, Tex.

Pvt. GORDON GRIFFITH, AB, has been assigned to the 14th Cavalry in Fulda, Germany. His wife (LINDA RODGERS, AB '65) joined him in late summer.

JAMES D. HOUSER, M.Ed., is a high school principal in Greenfield, Mo. He was formerly coach and principal at the Climax Springs (Mo.) high school.

CAROL JAMES, BS Ed., is teaching science in Vienna, Mo., and writes that she and her father have won three third-place trophies in canoe races this summer.

WILLIAM H. KARCHMER, BS BA '48, J.D., is associated with Schwab and Dwyer, a legal firm in Springfield, Mo.

HARRELL E. KIRKLAND, M. Ed., is principal of an elementary school in Bismarck, Mo.

JULIA B. KUCINSKIS, BS Ed., of Caledonia, Mo., has become a life member of the Alumni Association.

Mrs. GLENDA CLINE LAWSON, M. Ed., has completed her 15th year in the Scott County R4 School District at Benton, Mo. She lives in Cape Girardeau.

ROGER W. LEONARD, BS For., has been promoted to an information and education staff position in the supervisor's office of the Shawnee National Forest at Harrisburg, Ill.

HARVEY McCRAY, BS BA, and his wife (LINDA ANN BURKHALTER, BS Ed. '59) have a new baby. Harvey has joined KIRK DODGE (BJ '56) at DICK HALL's (BJ '48) Advertising Agency in Kansas City.

STEPHEN J. MICHEL, AB, is a chemist for Hawthorn Company of New Haven, Mo. He lives in Owensville.

SUSAN MILLER, BJ, a reporter for the *Miami Herald*, has been named bureau chief for South Brevard County (Fla.), where Cape Kennedy is located. She lives in Satellite Beach, Fla.

LAMIRE H. MOORE, Ph.D., is assistant professor of education at the University of Arkansas and is now in charge of counselor training. He lives in Fayetteville.



## Tiger Co-Captains

TWO SENIORS slated for first-string defensive duty—tackle Bill Powell (left) of Jefferson City and halfback Jim Whitaker of Kansas City—have been elected by their teammates as co-captains of the 1966 Tiger football team.

Powell, a raw-boned, 6-2, 225-pounder, is considered Mizzou's top line prospect for all-America honors. The tough, resourceful two-year guard regular was switched to tackle in spring workouts and showed quick aptitude in his new assignment. Powell also has been getting training as an offensive tackle, along with gigantic Russ Washington.

Whitaker is a stalwart of the defensive backfield corps. The 6-foot, 190-pounder suffered a pre-season arm fracture which cost him much early combat experience, but he still logged enough gridiron time to letter in '65. A jarring hitter, he also was the fastest man on the squad in competitive spring sprints. Jim could be used as a double-duty back if needed.

Scholastically, Powell is in engineering and intends to study Patent Law. He has twice been named to the all-Big Eight academic team, and was a second-team academic All-America choice last year. Whitaker is an outstanding scholar in Pre-Med School. □

WILLIAM F. OBERMARK, BS ME, MS, is now a production engineer for Pittsburgh Plate Glass in Crystal City, Mo. He and his wife Ruth live in Festus, Mo.

Lt. WALLACE PALMER, BS EE, is an instructor in basic electronics at Fort

Sill, Okla. He and Mrs. Palmer (JOANN MARIE BORGELT, BS Ed. '63, M. Ed. '65) live in Lawton, Okla., where she teaches in an elementary school.

MARJORIE REID, BS BA, is working as a secretary at the School of Social Work at the University of Missouri.



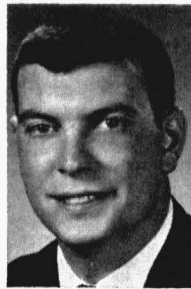
Newell, '65



Mitchell, '65



Flance, '66



Bybee, '66

2nd Lt. DONALD L. NEWELL, BS Agr., has received his pilot wings at Vance AFB, Okla., and is assigned to MacDill AFB, Fla., for duty with the Tactical Air Command.

2nd Lt. JAMES H. MITCHELL, BS Ed., received his pilot wings at Vance AFB, Okla., and is assigned to MacDill AFB, Fla.

WARREN R. SEYMOUR, Ph.D., has been named assistant to the dean of extra-divisional administration and assistant professor of education at M.U. He was formerly an assistant professor of education at Syracuse University, Syracuse, N. Y.

A. ROBERT STUTZ, Jr., AB, is personnel manager for Sheraton Peabody, Sheraton Corporation of America, in Memphis, Tenn.

ANNE SWEARINGEN, BS Ed., is teaching science in the junior high school at Sikeston, Mo.

2nd Lt. DENNIS C. SQUIRES, BS BA, is security and law enforcement officer at Hancock AFB, Syracuse, N. Y. He worked in personnel at Chrysler Corporation in St. Louis before going on active duty.

BENNETT TARLETON, AB(WH), received a master of arts in teaching from Harvard University in June and is teaching English at Great Neck (Long Island, N. Y.) South Senior High School.

JACK N. TAYLOR, M. Ed., teaches industrial arts and is assistant varsity football and track coach in Fenton, Mo. He and his wife have two children.

MARCUS KING TAYLOR, BS EE, is spending a five-month tour with the Navy in the Mediterranean. He and his wife live in Gallatin, Mo.

JIMMIE D. VERMILLION, BS Ed., M. Ed. '65, Joplin, Mo., has helped to train five groups of Peace Corps volunteers during the past two years.

KEITH WEBER, BS BA, has joined the M.U. football staff as assistant coach of the freshman squad. He will continue his studies in law school on a part-time basis. His wife is the former MARJORY E. FARMER, AB '64.

NORMAN E. WILLIAMS, M. Ed., is head of the science department at Pattonville High School. His daughter Carla entered M.U. this fall.

## '66

HARRY E. (Bud) ABELL, III, BS Ed., is a rookie linebacker with the Kansas City Chiefs, professional football team.

WILLIAM T. (Bill) ALLEY, MS, is working for the Navy Electronics Laboratory in San Diego, Calif.

REBECCA ANN BLICKENSTAFF, AB, is children's librarian at Wolfner Memorial Library for the Blind, a branch of the St. Louis Public Library.

DAVID BONJEAN, AB, is a sales representative for the St. Louis branch of Xerox Corporation. He and his wife live in Quincy, Ill.

Dr. JANIS LYNNE BURGESS, M.D., is interning at General Hospital in Kansas City.

RICHARD BUSH, BJ, recently began a two-year internship with the *Waikato Times*, Hamilton, New Zealand, through an arrangement between that paper and the School of Journalism. Bush was selected as the first candidate for the program which has been set up with the hope of expanding it into an exchange program by bringing a New Zealand student to M.U. to study journalism. P. V. HARKNESS, BJ '58, is managing editor of the New Zealand paper.

WILLIAM D. BYBEE, BS CE, is a staff associate in product improvement at Gulf Oil Corporation's chemicals plant in Orange, N. J. His wife is the former SUSAN C. MCGRAW, BS Ed. '63.

Mrs. MAURINE DUFFY, BS Ed., is a librarian in the Mexico, Mo., public schools.

PAUL H. DUNKAK, AM, is an associate professor of art and chairman of the art department at Bethany College, Lindsborg, Kan. He and his wife have two children.

STEVEN FLANCE, AB, a Peace Corps volunteer, is in Senegal, West Africa. He received 14 weeks of training at

Dartmouth College (Hanover, N. J.) and in Quebec, Canada, and an additional three weeks of practice teacher training in Bouake, Ivory Coast, before going to Senegal.

JUDITH ANN FORBES, BJ, is a copywriter for Meredith Publishing Company, Des Moines, Iowa.

WAYNE HARLEY, BS Ed., teaches general science at Hardin (Mo.) Junior High School.

FRANCES JEAN HOWARD, AB, is with the extension department of the St. Louis Public Library.

DONNA JOHNSTON, BS Ed., is enrolled in graduate school at the School of Social Service Administration, University of Chicago.

JAMES KIRSCH, BS EE, is assistant district engineer with the Missouri Public Service Company, and lives in Marshall, Mo.

GLORY KISSEL, AM, teaches vocal music in the Mexico, Mo., secondary schools.

WALTER R. MARTIN, Ph.D., has been appointed instructor of humanities at Michigan State University, East Lansing, Mich.

JERRY D. MCGOWAN, AM, was recently graduated from a VISTA training program at the University of Alaska in Fairbanks. He will spend one year working with the Eskimos of Shungnak, Alaska.

LYNN D. MISCHE, BS Ed., is teaching remedial reading under Title I in Fulton, Mo.

JANET NICHOLS, BS Ed., is teaching the second grade in Consolidated District No. 2 of Franklin County. She lives in Sullivan, Mo.

Dr. WILLIAM W. NICHOLS, Ph.D., is an assistant professor, English department, at Denison University, Granville, Ohio. Dr. Nichols was an instructor at M.U. for five years.

Mrs. JANE PETERSON Poepsel, BS Ed., teaches art in the junior high school at Fulton, Mo. Her husband is completing his master's degree in civil engineering at M.U.

JOHN RATLIFF, BS Agr., is teaching vocational agriculture in Mexico (Mo.) High School.

GARY REYNOLDS, BS Agr., is assistant county supervisor of the Vernon County office of the Farmers Home Administration. He and his wife and daughter live in Nevada, Mo.

LARRY ROST, BS Agr., teaches vocational agriculture in West Plains, Mo.

JOHN M. SHAW, MS, has joined the Saline County Welfare Office as child welfare worker. He and his wife live in Marshall, Mo.



MELANY ANN RUNYON, BS Ed., is teaching art in the elementary schools at Louisiana, Mo.

Mrs. JEAN F. BURCHAM Sturmfels, AB, is a cartographer with the Aeronautical Chart and Information Center, U.S. Air Force, in St. Louis. Mrs. Sturmfels majored in geography at M.U.

DON UNGERMAN, BS Ed., is teaching world history, American government, sociology, and economics at Carrollton (Mo.) High School. His major subject at M.U. was history.

## WEDDINGS

### '24

Mrs. Elliott Major and H. J. WATERS, Jr., AB, on July 25 in Shawnee Mission, Kan.

### '45

BEVERLY DEHONEY, BS BA, and Paul Arthur Bellville, on April 16 in St. Louis, Mo.

### '49

Joan Haselman and DON CARTER, BS Ch.E., on June 18 in St. Louis. At home: Chesterfield, Mo.

### '52

Marilyn Wolte and SAMUEL S. H. LEE, AB, AM '53, on July 2 in Washington, D. C.

### '53

Judith Aileen Lawwill and GEORGE GEAN LORANTOS, AB, on August 21 in Boston, Mass. At home: 14 Hillcrest Rd., Medfield, Mass.

### '55

JANET R. ISBELL, BS Ed., and C. M. S. (Bill) MODY, AM '63, on August 10 in New York City. At home: 1123 Indiana, Lawrence, Kan.

### '58

Sondra Sue Brodtkin and BYRON A. MILGRAM, LL.B., on July 31 in Kansas City, Mo. At home: Columbia, Mo.

### '59

Bonnie Watson and PRESTON B. PERKINS, BS BA, in July, at Maplewood, Mo. At home: 2461 Louis Ave., Brentwood, Mo.

Jean Marie Hawn and JERRY C. SADLER, BS BA, on May 21 in St. Genevieve, Mo. At home: St. Louis, Mo.

MARY D. HENLEY, Educ., and Edward J. Phelps, on June 19 in Hamilton, Mo.

Charlotte Ann Kassabaum and ORVALL DALE HARTER, BS BA, on June 25 in Flat River, Mo. At home: 41 Provincial Ct., Kirkwood, Mo.

### '60

Barbara Winkel and JOHN LONG-STRETH, AB, on July 30 in Harbor Beach, Mich. At home: East Lansing, Mich.

### '62

Janet Rainey and HARRY DENNIS DIERKER, M.D., on June 26 in Lebanon, Mo.

HELEN LEE HORWITZ, BJ, and Harold Norman Burdett, on July 17 in Albuquerque, N. M. At home: 124 Dumbarton Dr., Annapolis, Md.

Annis Jane Popkes and CHARLES EMMETT CALLIS, BS Agr., on July 9 in Paris, Mo.

### '63

HELEN LaMORT HARROLD, BS HE, and Robert M. Moody, on July 30. At home: 3758 Itaska, St. Louis, Mo.

Patricia Marye Chauvet and MITCHELL J. HENDERSON, AB, on June 27. At home: El Paso, Tex.

Elaine Marie Knudsen and WILLIAM GEORGE NEIL, Jr., BS BA, on June 25 in Kirkwood, Mo.

Mariette Stemper, of Caledonia, Minn., and PHILIP VIETH, BS For., on April 16.

### '64

Linda Kathleen Brandon and GARY LEE HOGAN, BS BA, on June 25 in Clarkton, Mo. At home: Sacramento, Calif.

KAREN TURNER and LEON R. JONES, BS Ed., on July 16 in Elsberry, Mo. At home: O'Fallon, Mo.

MEREDITH LEE MANSUR, BS Ed. *cum laude*, and Ronald M. Kyhos on July 30 in Silver Spring, Md. At home: Cumberland, Md.

### '65

JOANN MARIE BORGELT, BS Ed., M. Ed., and WALLACE PALMER, BS EE, on April 16.

CHERYL KAY BRUMMET and RICHARD MICHAEL PECK, BS Ed., on May 28 in Columbia, Mo.

MARGARET ANN BAUMGARDNER, BS Ed., and Frederick Peter Kovac on July 16 in Poplar Bluff, Mo. At home: 1019 East Lemon St., Tempe, Ariz.

BARBARA ANN BURKHARDT, BS Ed., and William Carl Heidbrink, Jr., on July 13 in Kirkwood, Mo.

Lynn A. Norton and J. DAVID COMBS, BS BA, AM '66, on June 18 in Evanston, Ill. At home: 270 Undercliff Ave., Edgewater, N. J.

ANNA JEAN COPENHAGEN, M. Ed., and Edward F. Adams on June 19 in St. Louis, Mo.

Rebecca Ann Morice and JAMES EDWARD DENNY, BS BA, on June 18 in Crystal City, Mo. At home: 590 Yale Ct., Des Plaines, Ill.

LAURA ANN GREBEL, BS Ed., M. Ed. '66, and RICHARD N. WARD, J.D. '66. At home: 3702 Warwick Blvd., Kansas City, Mo.

KATHERINE ANN KEITH, AB, BS Ed. *cum laude*, and Edward John Hanley, on August 6 in Columbia, Mo. At home: 2166 Evans Ct., Falls Church, Va.

DONNA LANDFATHER, BS Ed., and JAMES W. OSTHOFF, Arts, Journ. '66, on May 28.

SALLY MATHIS, BS Ed., and Lt. JACK MOORE, BS Ed. '66, on June 11 in Prophetstown, Ill. At home: Ft. Benning, Ga.

FRANCES NICOLL PRICE, BS Ed., and ROBERT MORRISON CLAYTON II, J.D., on July 2 in Kansas City, Mo. At home: 316 N. Fifth St., Hannibal, Mo.

SUZANNE LOUISE SELKA, Educ., and ROBERT HOLMAN BROWN on July 3 in Indianapolis, Ind. At home: 261 Reis Ave., Vallejo, Calif.

BARBARA LEE SIMMONS, Arts, Educ., and JERRY VANCE WOODHAM, BS Ed., on June 18 in Eldon, Mo. At home: Columbia, Mo.

Nancy Jane Gleason and RONALD LEIGH WINTERS, Arts, on July 2 in Neosho, Mo. At home: 3277 Sulphur, St. Louis, Mo.

### '66

Marjorie Ruth Joesting and JAY KEITH BOETTNER, BS EE, on June 18 in Tarkio, Mo. At home: Wichita, Kan.

CAROLINE JAYNE BROOKS, BS Ed., and CHARLES WELDON HANLEY, Jr., BS Ed., on August 20 in St. Louis, Mo. At home: Columbia, Mo.

MARILYN ELAINE HALL, BS Ed., and Donald Lee Preas, in July at Fulton, Mo. At home: 831 Nichols St., Fulton.

ROSEMARY BUCKNER, Arts, and Raymond Less Lewis on July 1 in Wilton, Mo. At home: 1615 Hinkson Ave., Columbia, Mo.

Gail Susan Ritter and WILLIAM CHARLES EIKMANN, BS BA, on August 20 in Clayton, Mo. At home: Columbia, Mo.

ANN LOUISE KING, BS Ed., and GARY LYNN DICKINSON, BS Agr., on July 23 in Hannibal, Mo. At home: 1510 Fair St., Chillicothe, Mo.

NANCY KNOPOW, BS Ed., and DENNIS SCHWARTZ, AB, on August 14 in Milwaukee, Wis. At home: Columbia, Mo.

SANDRA KAY ANGLE and JAMES CHESTER KNORPP II, BS Agr., on June 24, in Butler, Mo. At home: Route 3, Pleasant Hill, Mo.

HARRIET FRANCES KRUMREY and GARY EDWARD BURANDT, BJ, on August 12 in Pittsfield, Mass.

KAYE KUNKEL, BS Ed., and WILLIAM E. WADDELL, BS Agr., on August 7 in Foley, Mo. At home: Montgomery City, Mo.

Patricia Ann Ford and ALAN LEE LAFFOON, BS BA, in August at St. Louis, Mo. At home: St. Charles, Mo.

KAREN NIEMANN, AB, and Robert Vogt Schaefer on July 2 in Tarkio, Mo.

SHARON O'CONNOR, AB, and Richard Patterson on August 6 in Jefferson City, Mo. At home: 209 Rear West Miller, Jefferson City.

## DEATHS

Mrs. F. F. Stephens (LOUISE TRENHOLME) on May 17; the wife of Dean Emeritus Frank F. Stephens. Mrs. Trenholme was Dean of Women in 1925 and an instructor in history from 1926 to 1933, when she and Dean Stephens were married. Mrs. Stephens attended Randolph-Macon College, Barnard College, and Columbia University. She was a member of Phi Beta Kappa and Mortar Board.

Sgt. E. C. VIERA, on March 6 in Coral Gables, Fla.; an ROTC instructor at M.U. from 1925 to 1940; survivors include his wife and son, of 1012 Inman Terr., Winter Haven, Fla.

C. M. BARNES, B.L. '98, on August 26 at age 93 in New Orleans, La.; survivors include three sons: *Charles M., Jr.*, AB '25, BS BA '26; *Dr. Asa*, AB

'29, BS Med. '29; and *Dr. Seth S.*, Arts '31.

Dr. DON CARLOS GUFFEY, BS '99, Pe.B. '00, on August 11 at age 87 in Kansas City, Mo.; professor and chairman of the department of obstetrics and gynecology and lecturer in history of medicine at the University of Kansas Medical Center; survived by his daughter, Mrs. *Helen Guffey Weaver*, AB '37, of 1008 Valentine Rd., Kansas City.

HORACE R. RILEY, Arts '01, on July 24 at age 85 in Plattsburg, Mo.; president of the First National Bank in Plattsburg; survivors include his wife and daughters *Emma Jane*, BJ '34, AM '35, of Washington, D. C., and *Dorothy Ann*, BJ '35, of Plattsburg.

BENJAMIN M. NEALE, LL.B. '02, on July 15 at age 90 in Springfield, Mo.; lawyer; survivors include son *Harry G.*, LL.B. '31, of 2135 Edgewood, Springfield.

WALTER M. KRAFFT, B. Agr. '03, on June 22 in St. Petersburg, Fla. His wife lives at 4637 12th Ave., N., St. Petersburg.

HERTHA AMELIA EITZEN, AB '05, BS Ed. '06, AM '06, on September 29 at age 84 in Columbia, Mo.; teacher of Latin, German and mathematics; Phi Beta Kappa.

LESLIE A. BRUCE, Arts '06, on September 12 at age 83 in Pleasant Hill, Mo.; lawyer and former judge of the 17th circuit court.

Mrs. Robert B. Caldwell (EULA McCUNE), Arts, Educ. '06, on October 5 in Kansas City, Mo.; a former president of the Camp Fire Girls of Kansas City; active in the Charity Chest and Swope Settlement.

Dr. FRED BURKE KYGER, Med. '06, on July 19 at age 79 in Kansas City, Mo.; obstetrician and gynecologist; fellow of the American College of Surgery and member of the American Board of Obstetrics and Gynecology; survivors include daughters *Mary Bob* (Mrs. Bert Brooks), Educ., Arts '40; and *June* (Mrs. George W. Green), AB '35.

ROSE SHOEMAKER, BS Ed. '06, AB '11, on July 20 at age 92 in Albany, Mo.

Dr. ERNEST B. FORBES, Ph.D. '08, on September 8 at age 89 in State College, Pa.; former director of the Institute of Animal Nutrition at Pennsylvania State University; survived by his wife.

ABE STEPHEN BLEISH, LL.B. '10, on July 26 at age 79 in Albany, Mo.; former probate and magistrate judge of Gentry County; survivors include his wife and son *W. M.*, BS BA '46, of Leawood, Kan.

NEAL EDWARD MONROE, Law '10, on May 20, 1961. His wife Gloria lives at 519 N. Palm Dr., Beverly Hills, Calif.

WILLIAM IRL POTTER, AB '10, on August 12 at age 78 in Kansas City; lawyer.

THOMAS CURRY, Arts, Law '11, on June 19 in Lebanon, Mo.

GROVER CLEVELAND DURNALL, Agr. '11, on July 21, 1961, in Kirksville, Mo.

WILLIAM N. JENNINGS, Arts '11, on July 24 at age 73 in Moberly, Mo.; former owner of the Central Coal and Building Supply Company in Moberly; survived by his wife, of 320 W. Burkhardt, Moberly.

Dr. SAMUEL H. SNIDER, AB '12, on October 2 at age 78 in Kansas City; former associate professor of medicine at the University of Kansas Medical Center; member of the National Tuberculosis Association and diplomat of the Board of Internal Medicine of the American College of Physicians; survivors include his wife (*Tirzah Fay Barson*), BS Ed. '15, of 722 Ward Parkway, Kansas City, and sister *Jennie*, AB '16, BS Ed. '25, of Campbell, Mo.

ANNOLA DUNBAR, Arts '14, on September 7 in Vandalia, Mo.; former teacher.

CECIL JAMES HUBBARD, BS Eng. '16, EE '17, on September 16 at age 72 in Lee's Summit, Mo.; former superintendent of plant records for the Kansas City Power & Light Company; survived by his wife, of 608 Applewood, Lee's Summit.

MAMIE SHARP, BS Ed. '16, AM '24, on May 23 in El Monte, Calif.

CLARENCE F. (Toad) WASSER, Arts, Eng. '16, on September 1 at age 71 in Cape Girardeau, Mo.; former highway engineer with the U.S. Bureau of Public Roads; survivors include his wife, of 804 N. Park, Cape Girardeau, and daughter *Barbara B.* (Mrs. Bruce Melchert), BS Ed. '56, of Indianapolis, Ind.

WILLIAM H. CARR, Arts '17, on July 15 at age 91 in Kansas City; former lawyer in Lee's Summit, Mo.

JAMES H. HARKLESS, Jr., AB '17, on August 17 in Kansas City, Mo.; assistant general manager of the Hotel President; survivors include his wife (*Lucy Shepard*), BS Ed. '17, of 628 W. 58th Terr., Kansas City, and daughter *Alice* (Mrs. Charles F. Cecil), BJ '41, of Winnetka, Ill.

Mrs. Wayne Stewart (JANE QUAYLE), AB '17, on September 14 in John Bay, Ore.; Savitar Queen; survived by her husband and a son.

HENRY BURROW CLARK, AB '19, on April 8, 1965, in Lebanon, Mo.; survived by his wife.

J. P. (Jake) HAMEL, BJ '20, on September 15 at age 68 in Columbia, Mo.; former sports writer and managing editor of the *Columbia Tribune*.

GEORGE A. TUMBLESON, BS Agr. '21, on June 24, 1965, in Poplar Bluff, Mo.

ENNIS M. COOLEY, BS Agr. '23, in 1965 in Victoria, Tex.

HORACE DAVID FICKLIN, BS Agr. '23, on September 27 at age 71 in Cairo, Ill.; farmer, and a director of the East Prairie Bank; survivors include his wife (*Augusta B. Calvert*), Educ. '26, of the home in Charleston, Mo., and daughter *Charmian* (Mrs. J. Barton Boyle), BS Ed. '55, of Columbia, Mo.

CHESTER T. KRAUSE, BJ '24, on October 9 at age 67 in Springfield, Mo.; former managing editor of the *Maryville Daily Forum* and the *Jefferson City News-Tribune*; publisher of the *Mansfield Mirror*; survivors include his wife, of the home in Mansfield, Mo.

KAER P. VANICE II, Engr. '23, on September 20 at age 64 in Kansas City; lawyer and former Jackson County investigator and assistant county prosecutor; survivors include his wife, or 7325 Mercier St., Kansas City.

Mrs. Edward G. English (BERNICE LYNN) BJ '24, on February 18, 1964, in Wawona, Yosemite National Park, Calif.

FOSTER BOWMAN HAILEY, BJ '24, on August 13 in Tucson, Ariz.; newspaperman and member of the *New York Times* editorial board; recipient of the Missouri Journalism Award in 1945.

Mrs. Thomas T. Kopplin (EDITH CATHERINE DUBAIL), AB '24, on February 1, 1964, in Oklahoma City, Okla.; survivors include her husband, BS BA '24, of 7000 Country Club Pl., Oklahoma City.

HENRY EDWIN MATHIAS, AB '24, AM '24, on October 7 in Colorado Springs, Colo.; former member of the faculty and associate dean of Colorado College; survived by his wife (*Lucille Crews*), BS Ed. '26, of Colorado Springs, and a son.

ALFRED E. McELROY, BS BA '24, AB '24, on September 8 at age 64 in Kansas City; salesman and district manager for Thomas J. Lipton, Inc.; survived by his wife, of 3641 Campbell, Kansas City.

Mrs. Chester L. Young (LAURA L. THOMPSON), BS Ed. '24, on August 10 at age 64 in Columbia, Mo.; survivors include her husband, BS Agr. '28, and two sons.

McCORD T. DAVIS, Arts '26, on August 26 at age 61 in Aurora, Mo.; survivors include his wife, of Aurora, and son *McCord T., Jr.*, BS ME '59, of Indianapolis, Ind.

W. ROY GROCE, AM '26, on September 21 at age 74; state representative from Ray County and former high school principal and school superintendent; survivors include his wife, of the home in Richmond, Mo., and son *Dr. Nathan W.*, BS Med. '46, of Phoenix, Ariz.

GORDON H. HAMILTON, BS CE '28, on September 12 at age 62 in Hamburg, Germany; a Kansas City contractor, he had been visiting some of his construction projects abroad; survived by his wife, a daughter, and two sons.

Mrs. James H. Nash (EDMEE BAUER), BJ '28, on September 21 at age 58 in St. Louis; former food editor of the *St. Louis Star-Times*; survived by her husband, a son, and a daughter.

Mrs. Reavis Capps (ANN P. SEARCY), BS Ed. '29, on March 17, 1965, in Paris, Mo.

HAROLD EDWARD STITES, BJ '29, on August 21 at age 62 in Kansas City; former Associated Press editor; survived by his wife, of 300 East 57th, Kansas City, and a son.

Mrs. C. Frederick Adams (IRMA L. COMSTOCK), BS Ed. '30, on September 10 in Chicago; a resident of Jefferson City, Mo.; director of laboratories for the Missouri Division of Health.

Mrs. John F. Butcher (DESSIE MILLER), AB '30, on July 14 in Atlanta, Ga.; survived by her husband, BS Eng. '35, of 4120 Peachtree Rd., N.E., Atlanta.

JULIAN ARCH DAUGHERTY, BS Eng. '30, on July 4 in Webster Groves, Mo.

Mrs. L. Doral Flynn (DOROTHY DYSART), BJ '30, on September 24 in Columbia, Mo.; adviser for student publications at M.U.; survivors include her

# HOTEL CONTINENTAL

- Downtown—Heart of Theatre, Shopping and Business District. 10 Minutes from Airport or Railroad.
- 350 Air-Conditioned Rooms with Bath.
- Garage—24-hour Service.
- Home of the "Athletics" Major League Baseball and Starlight Theatre Productions.
- Finest facilities for CONVENTIONS, SALES MEETINGS and BANQUETS. Groups of all sizes. EXHIBITION HALL—10,500 sq. ft.



Year Around Swimming Pool, operated by K.C.A.C. and subject to it's rules.



and you'll enjoy

Famous  
**PLAYBOY CLUB**  
on 22nd Floor.

*1<sup>st</sup> Chateau C*

DINING ROOM and  
COCKTAIL LOUNGE

Famous for Charcoal  
Broiled Steaks

THE HOTEL  
*Continental*  
**KANSAS CITY** Missouri

DIAL DIRECT—  
Area 816, HA 1-6040  
Baltimore at Eleventh Street



husband, daughters *Leslie Ann* (Mrs. Robert W. Garrett), AB '57, and *Michael E.*, AB (WH) '65, and sons *Edwin Matt*, AB '59, MS '60, and *Tim*, a freshman at M.U.

LETA I. LESLIE, BS Ed. '30, on August 19 at age 68 in St. Louis, Mo.; former teacher of Latin and English.

BEAUFORD HARLAND MEWIS, BJ '32, on August 19 in Washington, D. C.; assistant chief, publications branch, for the information division of the Agricultural Research Service, U.S. Department of Agriculture; survived by his wife, of 2601 Woodley Pl., N.W., Washington, D.C., and a son and daughter.

PHYLLIS SMITH, BS BA '34, on August 1 in Searcy, Ark.

RUBY M. SMITH, AM '36, on September 25 in Olathe, Kan.; former teacher at Rosedale High School in Kansas City.

Mrs. John David Dorrill (ELIZABETH RUCKER), Educ. '38, on August 19 at age 49 in Salisbury, Mo.; survived by her husband, BS Agr. '38, of the home at 212 East Third St., Salisbury.

Mrs. MARGARET MERRIMAN Jongsso, Journ., Arts '38, c. 1960 in Denver, Colo.

RUBY LEE SCOTT, Grad. '38, on January 5, 1965, in Jamesport, Mo.

JOSEPH R. BUTLER, AM '39, on August 5 in Riverside, Calif.; faculty and staff member at California Baptist College; survived by his wife and three daughters.

BLANCHE SAWYER, BS Ed. '40, on July 10 in Chillicothe, Mo.

WALTER P. SCHLECHT, B & PA, Arts '40, on September 14 at age 48 in Carthage, Mo.; former president of the Carthage Chamber of Commerce and the Carthage Industrial Development Corporation; former secretary-treasurer of Carthage Crushed Limestone; agent for the Northwestern Mutual Life Insurance Company; survivors include his wife and three children and a sister, *Sarah Elizabeth*, BS Ed. '33, of Kansas City.

GUY L. BOOTHE, AM '43, on July 23 in Kansas City; survived by his wife, of the home in Independence, Mo.

JACK L. McFERRON, Agr. '43, on July 24 at age 43 in Memphis, Tenn.; a disabled veteran of World War II and the Korean conflict.

Dr. ALFRED C. MOON, BS Ed. '44, M.Ed. '45, D.Ed. '54, on September 2 at age 49 in Cedar Falls, Iowa; former director of music at the M.U. Lab School; member of the staff of Iowa State College; survived by his wife, a daughter and a son, of the home in Cedar Falls, and brothers *Jon Keith*, AB '48, and *Richard Bartlett*, AB '52.

HELEN BARTELMA OWINGS, Ext. '45, on August 23 at age 59 in Jacksonville, Ill.; teacher in Bowling Green, Mo.

Dr. DAVID O. ELLIS, AB '46, AM '48, Ph.D. '50, on August 4 at age 41 in Potsdam, N.Y.; associate professor of mathematics at Clarkson College of Technology; survived by his wife and son.

Mrs. Roy R. Storm, Jr. (SHEILA SPRAGG), BS BA '47, on September 7 at age 42 in Columbia, Mo.; a resident of LaGrange Park, Ill.; survivors include her husband, BS CE '43, two sons, two daughters, and sisters *Sharlyn* (Mrs. William R. Sappington), BS BA '50, and *Shirley* (Mrs. A. E. Moore), Arts '44.

J. ARTHUR PREWETT, BS Ed. '48, on September 19 at age 55 in Rolla, Mo.; mathematics teacher at Rolla High School; survived by his wife, of the home at 106 N. Walker Ave., Rolla.

MARVIN ANTHONY GOVRO, MS '51, on March 19 in an automobile accident; survived by his wife, of 18 Sandringham, Ferguson, Mo.

Mrs. Jess W. Hilterbrand (ILAMAE CLAXTON), Educ. '51, on September 3 at age 68 in Houston, Mo.; former teacher; survived by her husband, Grad. '51, of Houston.

ROBERT L. WREN, AB '51, BJ '51, on September 1 at age 43 in a highway accident near Racine, Wis.; M.U. football letterman; advertising and public relations director for Jacobson Manufacturing Company in Racine; survivors include his brother *Lowe (Junior)*, BS Ed. '52.

Mrs. IDA LAURA ANDREWS, M.Ed. '52, on September 10 at age 58 in an automobile accident near Heyworth, Ill.; principal of the Couch (Mo.) High School; resident of Koshkonong, Mo.

DONALD C. BURK, BS Agr. '53, MS '61, on September 6 at age 35 in Rochester, Minn.; extension youth agent in Boone County; survivors include his wife (*Marilyn B. Otto*), BS Ed. '53, of the home at 406 West Broadway, Columbia, Mo., and a brother, *Dr. Emmett Kay*, AB '54, M.D. '58.

JAMES R. HOVEY, BS BA '54, on August 4 at age 36 in Kansas City; sales engineer for Armco Steel Corporation; survivors include his wife (*Gloria Ann Klinefelter*), BS Ed. '56, and three sons, of the home at 9701 Catalina, Overland Park, Kan.

Mrs. Chester E. Million (MARILYN MAUPIN), Agr. '54, on November 15, 1965, in Randolph County, Mo.; survived by her husband.

Dr. CHARLES ORTHWEIN, BS Med. '54, on September 5 at age 35 in Hutchinson, Kan., of injuries suffered August 19 in a water-skiing accident; pediatrician;

survivors include his wife (*Elizabeth Ann English*), BS Ed. '55, and two sons.

LOWELL WELDON VAUGHN, BS BA '54, on July 25, 1964, in an automobile accident in Louisville, Ky.; survived by his wife, of 3503 Paragon Ct., Louisville.

Mrs. Lewis Bybee (ALMA CHERRYLY MYERS), BS Ed. '61, on July 8 at age 26 in an automobile accident near La Plata, Mo.; survivors include her husband, BS Agr. '61, D.V.M. '65, a daughter, and sister *Shirley Ann* (Mrs. Robert F. Gotter), BJ '57.

Capt. WELLS E. CUNNINGHAM, BS BA '61, on August 17 at age 26 in action in Vietnam; survivors include his parents, Mr. and Mrs. Boyd Cunningham, of 2024 Jule St., St. Joseph, Mo.

LOWELL E. DUNN, BS Ed. '63, on August 23 at age 25, electrocuted accidentally when he attempted to switch on a light in a hotel room in Korat, Thailand; a Peace Corps volunteer assigned to Thailand as a community development worker; survivors include his parents, Mr. and Mrs. James L. Dunn, of 304 Bryan St., Flat River, Mo.

Mrs. Gerald S. McConnell (LOIS JEAN SONTAG), BS Ed. '65, on June 29 in an accident near St. Joseph, Mo.; teacher at Central High School in St. Joseph; survived by her husband.

Pfc. CARL F. MEIER, Arts '65, of the Marine Corps, in action on August 6 at age 21 while on patrol duty near Danang, Vietnam; member of the M.U. freshman football team; survivors include his parents, Mr. and Mrs. Robert B. Meier, 25 Huntleigh Woods, Ladue, Mo. A Carl F. Meier memorial scholarship fund has been set up at M.U.

SUSAN TRENOR CROWE, BS Ed. '66, on August 30 at age 23 in Jefferson City, Mo.; an employee of Radio Station KCGM; survivors include her parents, Mr. and Mrs. Gordon Crowe, of 1301 W. High St., Jefferson City.

CHARLES MILLER CULL, Arts '66, on August 23 at age 18 in an automobile accident near Clinton, Mo.; survivors include his parents, Dr. and Mrs. Max Cull, of 501 East Clinton, Clinton, Mo.

BARBARA LYNN FETNER, Agr. '66, on August 10 at age 21 in Atlanta, Ga.; survivors include her parents, Dr. and Mrs. Robert H. Fetner, of Atlanta.

WILLIAM ROBERT WILLIAMS II, BS BA '66, on October 1 at age 22 of injuries suffered in a motorcycle accident near Columbia, Mo.; drum major for Marching Mizzou 1963-65; survivors include his parents, Mr. and Mrs. William R. Williams, of Bolivar, Mo. A memorial loan fund has been established in his name by members of the band.

# Alumni Meet in Los Angeles

Missouri lost, 24-15, when the Tigers played the UCLA Bruins on October 1. Alumni met before and after the game.

*Three of Hollywood's Crosby boys attend the party*

A bus caravan took alumni to the game. Paul Hamilton, right, is with Russell Hayner.



Three of the Crosby boys attended a post-game get-together in the Palisades Room of the Century Plaza Hotel. Former cheerleader Jan Schwartz Crosby, center, came with husband Lindsey. On the left are Ron Pecora, member of the Los Angeles Alumni Association executive committee, and Donna Wright Schultz, also a former cheerleader. At right are Nancy Taylor and Phillip Crosby. Dennis Crosby was elsewhere in the crowd.



Eating brunch on the terrace of the Century Plaza Hotel before the game are (left to right) Bert Lowen, Jerome P. (Red) Blanton, Mrs. Blanton, Jane King Lowen, and Mary Louise Hourigan.

# LETTERS

TO THE EDITOR:

I was pleased to see in your Campus Commentary column a photograph of my official Texas license plate, "MIZZOU." I thought a few words of explanation and some interesting sidelights might be appreciated.

In Texas one may have any license plate that he desires within six letters or six numbers for a small fee. Hence, the "MIZZOU" license plate.

On several occasions while driving in the Dallas area, cars have pulled up alongside of me with drivers waving frantically and pointing to my license plates as they go by. Since having the plates, I met one fellow grad, Bill Selby, who was in my graduating class and whom I had not known was in Dallas.

After seeing the photograph of the "MIZZOU" plate in the *Alumnus*, Bob Stutz, a fraternity brother living in Memphis, called long distance just to say "hello." So, you see, it's an interesting plate to have.

If you keep a sharp eye out, you will see the "MIZZOU" plate on campus soon, as my wife and I plan to drive up for Homecoming.

BRUCE J. LOEWENBERG, '61

Dallas, Tex.

TO THE EDITOR:

Some years ago I was "lost, strayed, or stolen" from the rolls of the Alumni Association. Would you please let me know what I have to do to once again participate and keep abreast of the happenings at "Mizzou"?

PAUL C. McMILLAN, '39

Boulder, Colo.

ANSWER

I have your letter requesting information and I am enclosing a pamphlet, "Why you should belong . . ." and, for your convenience, a membership envelope. If you will fill this out and mail it back to us along with a check for your dues, you will soon be "back in the fold" and receiving the *Alumnus*, the football letter, special interest publications, etc.

I am sorry to inform you that we do not have an active alumni chapter in Boulder, Colo., but Denver and Colorado Springs both have active groups functioning. I have listed below the names of the chairmen in these two cities. Perhaps you might like to contact either or both of them.

Colorado Springs: Col. Bill Woodyard, Qtrs. 4194, USAF Academy.

Denver: Charles W. Henning, Jr., 3074 East Cornell Circle, Englewood, Colorado 80110.

Glad to have you aboard again!

BUS ENTSMINGER

TO THE EDITOR:

I believe this is my 56th renewal of my subscription. I began taking the *Missouri Alumnus* immediately after graduation in 1910 and have renewed it annually ever since. I sure enjoy reading about our University's expansion program and about the "old grads." I am semi-retired, still operate the George Kirk Tax Service. Am going to wear out, but don't intend to "rust out."

GEORGE W. KIRK, '10

Sikeston, Mo.

(Ed's note: We suspect a 56th renewal is a record. Any challengers?)

TO THE EDITOR:

. . . To me the *Alumnus* has always been too damn academic. A magazine put out by the school has to be so, but not an alumni publication. Everyone out in the world is up to his ears in their business or profession. They have to be if they want to compete. I went to business school, but I couldn't care less about a professor in business school I don't know, or a geology professor just rounding 25 years with the University.

. . . University Days left some precious memories with most alumni, and I know the first thing I do when I get the *Alumnus* is to thumb through in the hope of picking up a thread of nostalgia. If I don't, I go back and

read the stories. Is it a sin to mention Andy's Corner, Rollins Field, The Huddle Campus Drug, etc.? Former students remember the fun they had first, and the economics classes later.

BOB HOFFMAN

Montgomery City, Mo.

TO THE EDITOR:

The two days of September 16 and 17, spent in Columbia during the alumni seminar, were very pleasant, and a real eye-opener to the vigor of the University.

The tour of the campus is a must for alumni who have not been on campus in recent years. The visit to the reactor was made doubly worth while by the comments of Dr. Fitzgerald. The tours of the library and museum were also interesting, and again the explanations given by the directors provided the real meat of the tour.

We believe that alumni are as interested in the "why" as they are in the "what" of university programs. The two days of the fall meeting were instructive. I, for one, left with the impression that the University of Missouri is a real "going concern," and is geared to the needs of the state as well as to those of the student.

Each of the alumni must have left feeling very proud to be a part of M.U.

HARRY LANDIS, '28

Dayton, Ohio

## 'A fine gesture'

Although the Big Eight has done away with post-game handshaking—a point that may have puzzled tv viewers of the Missouri-Nebraska game—Dan Devine went over to the Cornhusker bench after his team's 35-0 defeat Oct. 29.

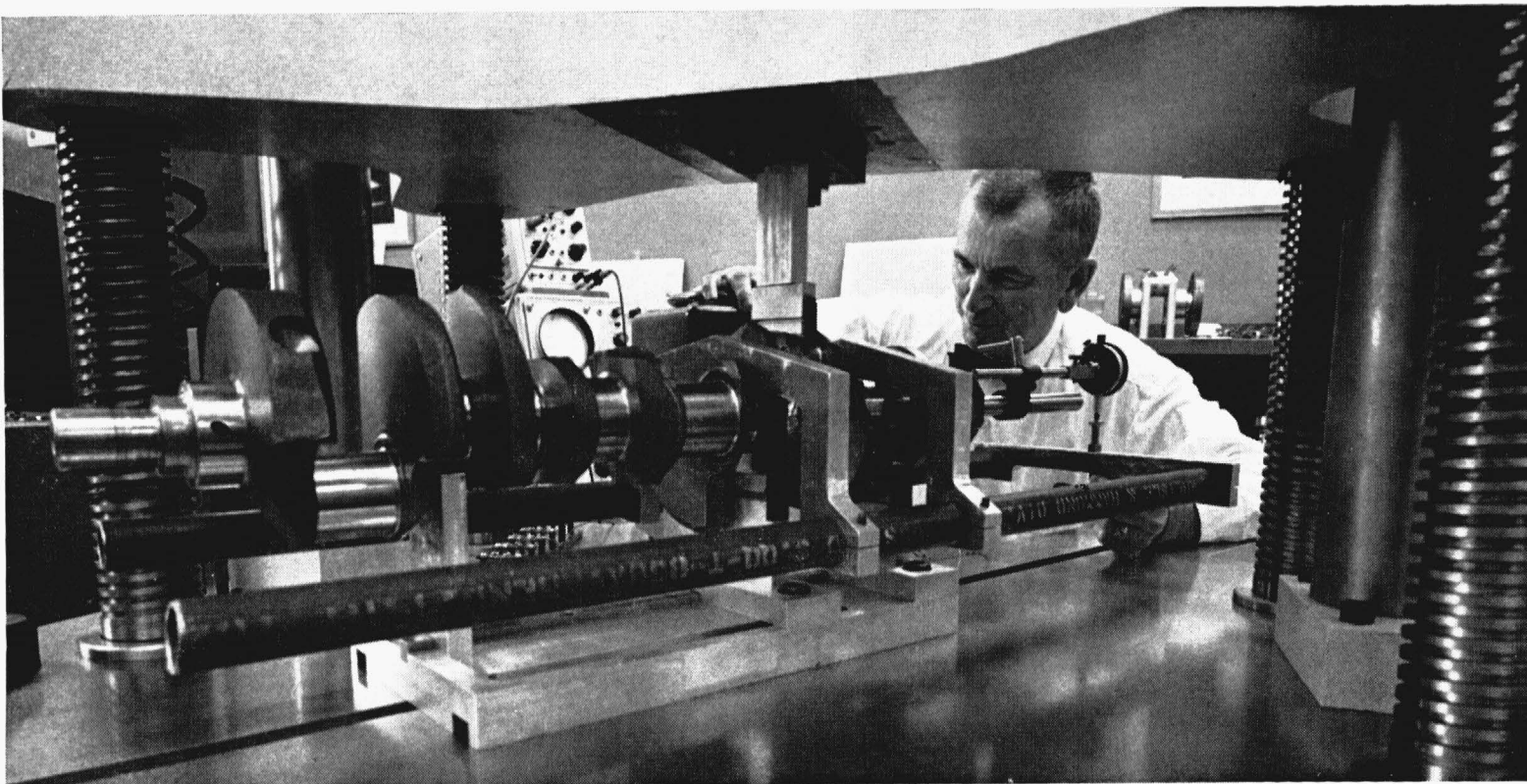
"That was a mighty fine gesture from Dan and one of the reasons he is a fine coach and gentleman," Nebraska Coach Bob Devaney said, adding: "After watching Missouri freshmen the last two years, I imagine I have some walks in store for me after future Missouri games."





**Ev Sherrick was a "test pilot" at twelve.**

**Today he tests materials to make cars safer.**



Seven years before the "Spirit of St. Louis" landed near Paris, young Ev Sherrick was launching his first plane—a home-made model, powered by an outsized rubber band. His goal: to design the plane to fly as long as the power would last and to ensure a safe landing.

Now, some forty years later, as Chief Analyst of the Power Develop-

ment Stress Lab at GM's Technical Center, Everett Sherrick is still concerned with safe "landings"—safe arrivals on highways, instead of skyways.

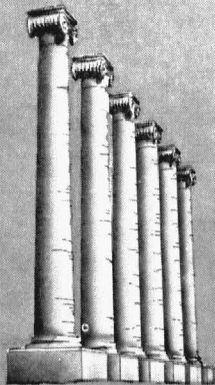
Ev started his GM career in 1925 with Cadillac Division as a draftsman, with emphasis on camshaft and crankshaft design. During World War II, he specialized on structural analysis for aircraft engines with GM's Allison

Division. Today, he heads up a group of engineering specialists who test for stress . . . study structural strength of durable materials day in and day out. Their tests are exhaustive, intensive and continuous . . . solely designed to put safer, stronger more reliable cars on the road.

We count on people like Ev Sherrick. They make General Motors tick.

**General Motors is people making better things for you.**





UNIVERSITY OF MISSOURI ALUMNI ASSOCIATION, 308 Jesse Hall, Columbia, Missouri 65201

RETURN REQUESTED



SCHWEITZER HALL →

STEPHENS HALL →

LEFEVRE HALL →