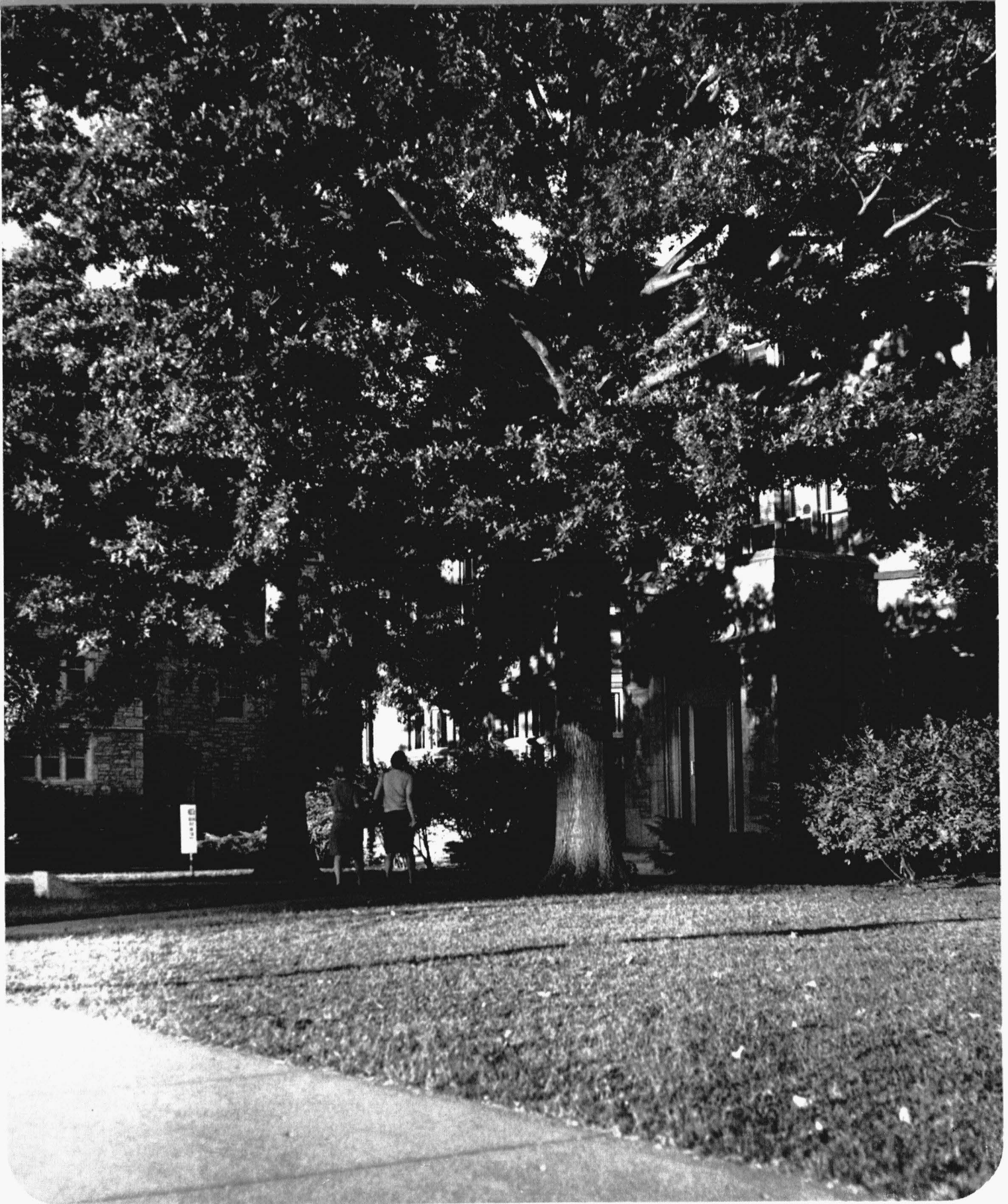


MISSOURI ALUMNUS

OCTOBER 1966





MISSOURI ALUMNUS

October, 1966
Vol. LVI, No. 1

Published by the
University of Missouri
Alumni Association

President
Marvin D. McQueen, '36
St. Louis, Mo.

Executive Editor
Guy H. Entsminger, '49
Assistant to President for
University Development
and Alumni Activities

Class Notes Editor
Louise H. Stephens, '35

Consultants
Paul L. Fisher, '41
Professor of Journalism
University of Missouri
Columbia, Mo.

Barks Publications, Inc.
818 Olive St.
St. Louis, Mo.



2 Around the Columns

Dr. John C. Weaver becomes the eighteenth president.

6 The University Begins Its 128th Year

A plentitude of programs and activities introduce new—and welcome old—students to the campus.

12 Dan Devine Assesses the Season

The coach is not overly optimistic.

16 From All-Americans to Rookies

This fall Missouri may have sent to professional football some who will achieve greatness.

20 Letters

21 A Destroyer to Honor a Missouri Navy Hero

Lt. Harold Dale Meyerkord, '60, is the first naval officer to be killed in combat in Viet Nam.

24 He Landscapes Missouri's Campus

It's Willard Summers' job to keep 800 acres green and lovely.

29 Class Notes

48 Specialist in Bengali Translation

About the Cover:

Pin oaks tower in front (west) of Read Hall. These native and durable trees are roughly 50 years old. When they become old, their lower limbs will dip to brush close to the ground while top branches will fan skyward. For more on the trees and loveliness of the campus, see pp. 24-27. BACK COVER. Fall registration. Advisers and advisees ponder study programs.

The *Missouri Alumnus* is published monthly except July, August and September by the University of Missouri Alumni Association, 308 Jesse Hall, Columbia, Missouri 65201. Second class postage paid at Columbia, Missouri, and at additional mailing offices. Active membership \$4.00 a year. Life membership \$80.00.

Campus Commentary

By BUS ENTSMINGER

1966 Costs of Attending the University

Many questions arise as to the exact costs of attending the University of Missouri. Present costs are detailed, but recreational and personal expenses of the individual must be added to these for a complete picture.

For one semester of approximately eighteen weeks

Incidental fee	\$165.00
Student Union fee	10.00
University Residence Halls (room and board)	385.00
Books and supplies (estimated)	65.00
	<hr/>
	\$625.00

Students in the School of Medicine pay an additional fee of \$75.00 per semester, and those in Veterinary Medicine pay an additional fee of \$32.50 per semester. Also, students enrolled in applied music pay an extra fee of \$30.00 per course each semester.

Undergraduate students who are not residents of Missouri pay an out-of-state tuition of \$250.00 per semester in addition to the above costs. School of Medicine students who are not residents of Missouri also pay a fee of \$250.00.

Athletic Field's New Look

Visitors to the campus after September, 1966, will notice that the stone gateways which were installed one-half century ago as an entry to Rollins Field, have been relocated

at the new Athletic grounds across Providence Road from Memorial Stadium. The gateway is a gift to the University from the Rollins family.

Medical Expansion

Additional construction which is scheduled to be completed for the 1968-69 school year at the School of Medicine will then permit the University to expand its entering medicine classes from the present 85 to the planned maximum of 100. This new facility will also admit an additional 50 graduate students with masters and doctors degrees in basic medical sciences.

Editor's Post Vacated

Jack Taylor, the award-winning editor of the *Missouri Alumnus* since 1954, moved from the magazine to the news information field on July 1 and the result may well be more Jack Taylor stories in *The Alumnus*.

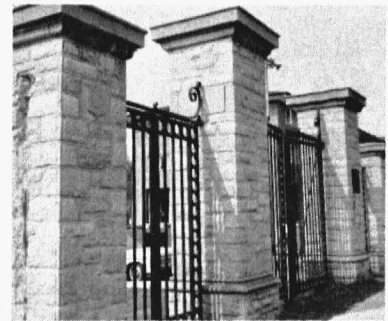


Jack Taylor

Taylor became assistant director of the University Office of Public Information, a position he previously filled for five years. He will be on the staff developing news and features about the University.

Under Taylor's editorship, *The Alumnus* received several awards in national competition, including selection by the American Alumni Council as one of the 10 most outstanding magazines. Most recently the magazine received an honorable mention in alumni content.

As editor, Taylor saw the magazine increase in size from an average of 24 to 40 pages and break away from black-and-white to a



Rollins Field Gateway

multi-color production. Many of *The Alumnus* readers may recall his "Page 36" which was more or less a regular feature of the publication.

It is with deep regret that I pass on this information to the readers of this magazine. Jack has rendered invaluable service to this publication and to your Alumni Association programs. His abilities and talents are such that, for the time being at least, only professional magazine consultants can fill his shoes. They will continue to put out the magazine each month, making every effort to continue its improvement in content, style and appearance.

Eyecatching License Plate

Along with his membership check, Don Ayers (now of Lawrence, Kan.) sent in a picture of a Texas auto license plate which caught his eye. Owner of the plate is Bruce Loewenberg, a fellow alumnus who is sales representative for IBM in Dallas—same kind of job Don has. Incidentally, the picture was taken by a K.U. grad.



AROUND THE COLUMNS . . .

Dr. Weaver takes the helm

The University's new president, Dr. John C. Weaver, took office on September 1, becoming the fourteenth man to hold the title and the eighteenth to head the administration in the school's colorful 127-year history. For the first time in nearly four decades, the University has two living former presidents with the retirement of Dr. Elmer Ellis. They are, from the left, page 3, with the new president, Dr. Frederick A. Middlebush, president from 1934 to 1954; Dr. Weaver; and Dr. Ellis, president from 1954 to 1966.

Both Dr. Middlebush and Dr. Ellis have been given titles of emeritus president by the Board of Curators. Dr. Weaver, 50-year-old Midwesterner who since July, 1964, had been at Ohio State University as vice-president for academic affairs and dean of faculties, firmly believes Missouri "has the resources to mount and the wisdom to demand a great state university." The man who succeeded Dr. Ellis paid tribute to his predecessor for being "remarkably successful in giving the University an esprit de corps, a willingness to do its best. He has done a lot to help this University believe in itself. I hope that in the years ahead we can fortify that resolve."

The Weaver family is occupying a home on West Burnam Road and besides the new president, includes the former Ruberta Howell and their two sons, 19-year-old Andrew and 15-year-old Tom. Dr. Ellis has an office on the third floor at Jesse Hall and has reported there daily, making himself available for talks with his successor, situated on the first floor.

Some changes made

They say the only permanent thing in life is change: the University is permanent! Two new residence halls are opening this fall, providing living facilities for 1,018 students—509 women and 509 men. Tentatively called Hall A and Hall B, the new residences are located on Rollins Street, between College and Virginia Avenues. They are adjacent to another recently opened dormitory complex, the Bingham group. The additions will enable the University to have a normal occupancy operation. In the past, notes Director of Housing Harold W. Con-

dra, it was necessary to "double up" in some University accommodations. In some cases, three students had to share a room designed for two.

In other moves: The University has opened bids for the grading and rock surfacing of an area east of Memorial Stadium to be used for parking purposes. It's estimated that the area on about 19 acres south of Route 740 east of the Stadium—between the Stadium and the University's General Services Building—will provide parking space for more than 2,200 cars. . . .

Bids are being taken for the furnishing and delivery of office, lounge and classroom furniture to be used in the new Physics Building. The structure, on College Avenue north of Rollins Street, is scheduled for completion soon, with some lecture rooms and laboratories now ready for use. . . . And bids have been accepted for the furnishing and installation of equipment for the complete electrical renovation of Gwynn Hall. The building is used by the School of Home Economics. . . . Contract bids also have been accepted by the Board of Curators for remodeling Crowder Hall, headquarters building of the University's Air Force and Army ROTC; for hard-surfacing a new drill field under construction on ground that formerly was the baseball portion of old Rollins Field; for materials and equipment for meat processing and freezer rooms; for a one-control computer system for the physiology department, and for an electron microscope for the College of Agriculture.

New faces in new places

The fiscal and business operations of the University have a new look. Reorganization has been approved by the Board of Curators which assigned responsibility to the four-campus system as well as a business officer on each campus. Ray H. Bezoni will continue as comptroller and Dale O. Bowling as business manager, with University-wide responsibilities. They have had dual responsibilities to the University and to the Columbia campus. And completing the new arrangement: Five individuals are designated as fiscal and business officers on the four campuses. Donald F. Hoehle is the appointed fiscal business head at Columbia. The new business officers are Emmett A. Klinkerman at Columbia and



Three presidents. Frederick A. Middlebush, John C. Weaver, Elmer Ellis.

Joseph Wollard at the Rolla campus. Continuing in that capacity are Edgar Barth in Kansas City and John Perry in St. Louis. Under the new setup, Jack A. Lister and Robert E. Marriott, Sr., will remain as assistant business managers responsible to Bowling. . . . The University's Office of Public Information also has made some changes. Thomas E. Richter, formerly head of public relations for the Auto Club of Missouri, in St. Louis, has taken over as the new director. He succeeds Thomas C. Morelock, who has retired. Rowland H. Smith and Dennis E. Brown have been appointed to new positions in the Office of Public Information. Smith, veteran Columbia, Mo., newspaperman, who has been associate director, is now also in charge of the O.P.I. news bureau. Brown, one-time staffer at The University of Iowa Office of Public Information, has become associate director, O.P.I., for special activities. . . . Dr. C. Edmund Marshall has been named acting dean and Dr. William M. Jones has been named associate dean of the Graduate School. Dr. Marshall will continue to handle fellowships, and Dr. Jones will be in charge of student programs and regulations in regard to degrees, jobs formerly handled by retired Dean Henry E. Bent.

Ready to pull reactor switch

The University has received the go-ahead signal from the Atomic Energy Commission to put into operation the school's powerful three-million-dollar Research Reactor Facility on the Columbia campus. The formal licensing paved the way for activation of the reactor's uranium pile to put it into use for research and teaching. The Federal Government's operating license provides for operation of the reactor at power levels to a maximum of five megawatts. Dr. Ardath H. Emmons, director of the facility, is hopeful that the unit—one of the most powerful at any university in the nation—can meet requirements for operation at its full maximum power of 10 megawatts within two years. The facility, boasting numerous safety devices, was constructed with funds provided by the Missouri General Assembly, supplemented by Federal grants. Formal dedication ceremonies were held last May 28, with Dr. Glenn T. Seaborg, AEC chairman, as the featured speaker. The

Research Reactor Facility is in the University's Research Park on Highway K in the southwest area of the Columbia campus.

Gifts and grants

Sums ranging from \$500 to more than \$433,000 have been received by the University in recent weeks. The Board of Curators has accepted a donation of \$500 from the Student American Medical Association Foundation to establish an emergency loan fund for medical students. Blair Behringer of Winter Park, Fla., a medical student at the University, is president of the Student American Medical Association. There are 101 new traineeship appointments for the 1966-67 academic year at the University. The traineeships were established under National Aeronautics and Space Administration, National Defense Education Act and National Science Foundation grants total \$433,377. The grants establish new traineeships which—along with renewal grants—will give financial aid to more than 200 students working toward advanced degrees in scientific and professional fields. Dr. C. Edmund Marshall, acting dean of the Graduate School, will administer the program.

The College of Engineering has been granted \$180,075 by Federal agencies for research projects which six faculty members will conduct. The largest—\$94,000—is from the National Science Foundation. It went to Dr. Truman S. Storvic, associate professor of chemical engineering. The money is ear-marked for initiation of studies on "High Temperatures, High Pressure Thermal Conductivity Measurements of Polyatomic and Polar Gases."

Nearly \$120,000 has been granted by the State Department of Education to conduct an adult basic education program in the metropolitan St. Louis area. The program is under the direction of William A. Gates, head of the University's Extension Center in St. Louis. A grant of \$110,352 has been received from the U.S. Vocational Rehabilitation Administration. To be supervised by Dr. Richard W. Thoreson, associate professor of education, the grant continues support of a graduate training program in rehabilitation counseling. It provides

Graduation was a family affair last June for Darryl Francis, B.S. Agr., '36, president of the Federal Reserve Bank of St. Louis. His son-in-law, daughter, and son received degrees at the commencement exercise. They are (from left) Frederick Obermiller, A.B., '66; Mrs. Marilyn Obermiller, B.S. Ed., '66; and Robert Francis, M.D., '66.



for approximately 30 traineeships at the master's and doctoral levels.

Summer commencement

"The enrichment of one's thoughts, convictions, knowledge and actions is a most significant value."

That's what Chancellor Merl Baker of the University of Missouri at Rolla told summer graduating class members in his assessment of a college degree as the commencement speaker at Columbia on Aug. 5. The educator told the group of seniors that their diploma "is backed by success of many graduates before you and becomes more valuable if your success raises the stature of the University."

Chancellor Baker noted that the graduates will be going out into a changing world. He mentioned expanding population; that 90 per cent of all engineers and scientists who ever lived are living today; of knowledge of only five elements 10,000 years ago, of the addition of forty in the last century alone; of "white collar" workers exceeding the number of "blue collar workers" in 1956; of the increase from 18 to 37 per cent between 1950 and 1964 of the top industrial executives educated in engineering and science; and of the fact that engineers and scientists predominate in the top 5 per cent of the income bracket since 1960.

He closed on this pertinent observation, telling the graduates:

"Material rewards will come, and this is good; but the intangible ones are even more lasting. Don't overlook your potential to contribute to society. This society is changing and you must keep pace with this change. America's strength lies in our educated leaders and no other cause can appreciate your degree more than your individual contribution to America's strength."

On the same Aug. 5—over at the Small Ballroom of the Memorial Student Union—nineteen University ROTC cadets and midshipmen were formally commissioned into the Armed Services. Col. Clayton Finley, professor and chairman of the department of Aerospace Studies, was master of ceremonies and Dr. Robert L. Burton, assistant dean of the College of Education, was the speaker. Dr. Robert Callis, dean of extra divi-

sional administration and professor of education, presented the commissions.

'University Day' for high schoolers

High school seniors from all over Missouri will get a first-hand look at higher education and campus life when they are special guests of the University at its ninth annual University Day at Columbia Oct. 8. There will be an "open house" at which the seniors, their parents and interested school officials will be personally shown and oriented on the operations of their State University and what it offers. Chancellor John W. Schwada has sent special invitations for the event. The visitors—who last fall numbered about 4,000—are expected to exceed that total this year. The guests will receive pertinent information about academic programs, housing facilities, college costs, academic requirements, teaching programs and curricula, financial aid and related assistance, social and recreational facilities and the numerous other aspects of student life. The day will get underway at 9:15 a.m. (CDT) with a general assembly in Brewer Field House. Activities will include guided tours to thirteen schools and colleges and most of the academic departments. The tours will include the residence halls and food centers; classrooms and libraries; athletic and physical education facilities; and numerous campus structures, such as the newly completed Research Reactor Facility and other dramatic aspects of the University's rapid expansion in enrollment, instruction and research. There will be in numerous divisions and departments special demonstrations in science, engineering, medicine, nursing, home economics, agriculture and other areas—as well as various exhibits. At the kickoff assembly, Dr. Jack Matthews, Dean of Students, will preside. Chancellor Schwada will extend a welcome from the University to the guests. And William Thompson Jr., of Affton, Mo., president of the Missouri Students Association, will deliver the greetings of University students to the visitors.

Busy summer campus

Besides the upcoming University Day, the Columbia campus has been the scene of much other activity this

summer and early fall. A unique experience in learning took place at the University this summer under the joint sponsorship of the school, the U.S. Public Health Service and the Woodhaven Christian Home for Children in Columbia. The project—Student Work Education and Training Program in Mental Retardation—provided a significant work experience in mental retardation for superior students, at the high school, college and graduate levels. Under the direction of Dr. Rodman P. Kabrick, University associate professor of clinical psychology, and the Rev. Charles Palmer, administrator of Woodhaven Children's Home, the project is continuing this fall. Beginning Sept. 15, five graduate or professional students have been gaining experience by working with children under staff supervision, giving them intimate knowledge of the professional field. In the summer program, the students worked with mentally retarded children at Woodhaven under fully qualified professional supervision. The assignment of the student was keyed to the nature of his interests and capabilities in relation to the useful activities of the Woodhaven project. Various work assignments were available to the student aides, including assistance in child-care, recreation, social service, volunteer services, office work, working with youth, nursing, clinical psychology, teaching and speech habilitation programs. Each day the student aides met for a conference, discussion, lecture or supervisory session with the staff and were given study material of general interest in the area of retardation. The aides visited the facilities and studied programs of another institution, participated in a professional-level conference on mental retardation or visited community agencies that provide services for retarded children—such as the St. Louis Association for Retarded Children, Inc., Day Camp. Aim of the program is to furnish a work experience in order to stimulate interest in vocational opportunities in working with the retarded. . . . "Missourians Look at Missouri Secondary Schools" was the theme of the 32nd annual conference of the Missouri Association of Secondary School Principals at the University, Sept. 25-27. The event featured speakers Dr. Don Manlove, a professor of education at Indiana University; Dr. Calvin Gross, dean of the School of

Education in the University of Missouri in Kansas City; and Dr. Bob G. Woods, dean of the College of Education at the University in Columbia.

The highly-successful conference discussed in-service education of teachers, research findings on flexible scheduling of class length and size, long-range curriculum planning, school and college relations and vocational education. The association's November breakfast meeting will be held Nov. 4 at the Hotel Muehlebach in Kansas City. The speaker will be Dr. Chester Swanson, of the School of Education at the University of California. . . . A school and community development seminar for foreign educators and education officials studying at various colleges and universities throughout the United States was held at the University, Aug. 22-Sept. 9. Presented by the department of regional and community affairs in the School of Social and Community Services, it was the second such seminar at Columbia under sponsorship of the U.S. Office of Education and the U.S. Agency for International Development. Dr. Donald L. Beran, associate professor of regional and community affairs, directed the program, with members of the department assisting in instructional work. The some 45 participants attending the three-week seminar represented 19 nations in Asia, Africa and South America and came from 24 universities and colleges. One of them, Idris Ahmed El Amin, of Khartoum, the Sudan, is a senior student majoring in industrial education at the University. . . . The Office of Continuing Medical Education as the University's Medical Center opened a series of fall conferences for general practitioners, Sept. 16-17. The first session was on "Neurological Problems in Office Practice," with Dr. John Somers, assistant professor of medicine (neurosurgery) presiding. Objective of the course was to assist general practitioners in diagnosis and treatment of the more frequently encountered neurological problems. Representative physicians were polled on a state-wide basis to learn the particular types of problems in which they would be interested. The program was developed by Dr. Violet B. Matovich, now chief of neurology at the Veterans Administration Hospital in Kansas City.

□



Dean Elmer R. Kiehl, College of Agriculture, welcomes one of the class of 1970.

The University Begins Its 128th Year

With a new president and a record registration, it's 'back to school' for 18,500 on the Columbia campus with an orientation and get-acquainted program for the newcomers



“NEW STUDENTS, WHY ARE YOU AT MU?”

As thousands converged on the Columbia campus last month for the beginning of the University of Missouri's 128th academic year under the leadership of a new president, Dr. John C. Weaver, new students, mostly freshmen, participated in a four-day orientation program, recorded in these pages by the *Missouri Alumnus* camera.

The 18,500 registration was a substantial increase over the 17,582 students who had registered at the end of the fourth week of classes in the fall of 1965. But, although the numbers represented another record, con-

fusion was at a minimum as carefully-planned orientation programs guided freshmen and transfer students through their first days on campus. Attendance at the meetings was compulsory.

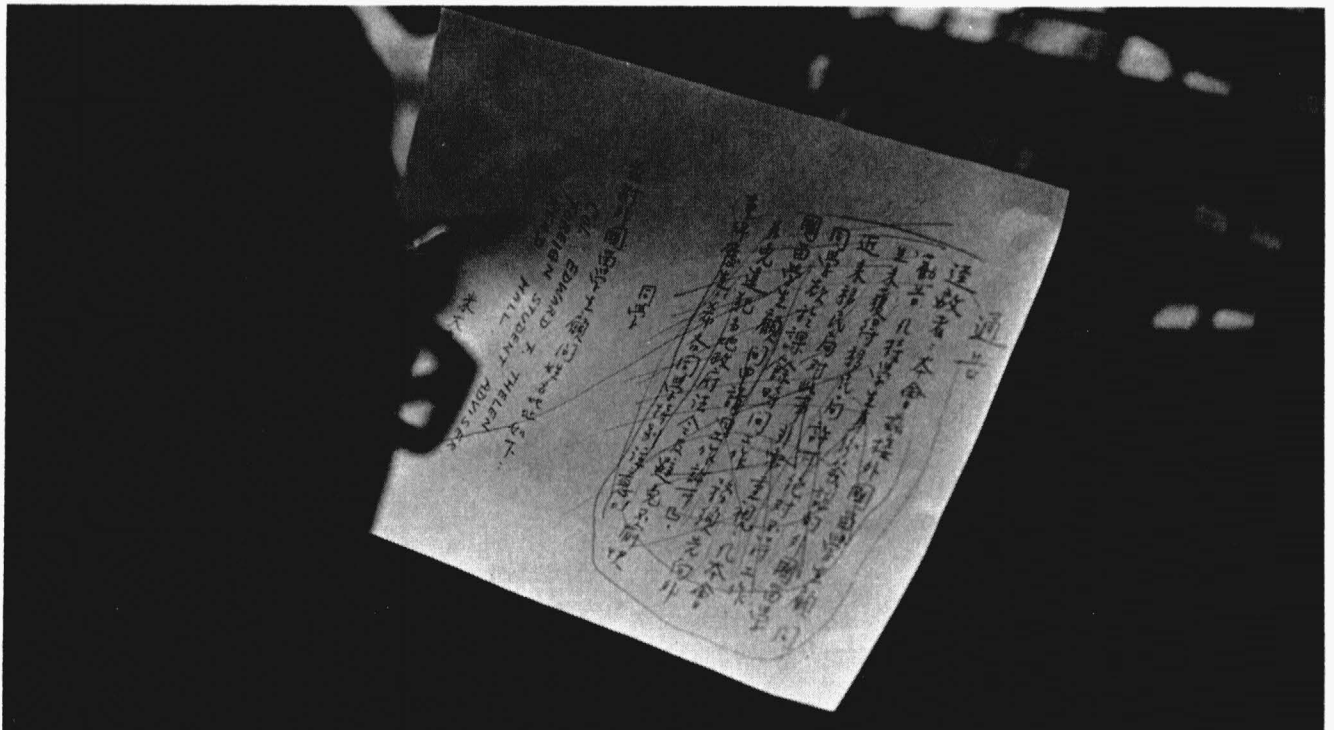
An official welcome from the University family was delivered by Chancellor John W. Schwada to new students and their parents at the Convocation in Brewer Field House September 6. University deans and directors were introduced from the platform. Thus began the orientation program, its theme “The University,” the sub-theme, “New Students, Why Are You at MU?”

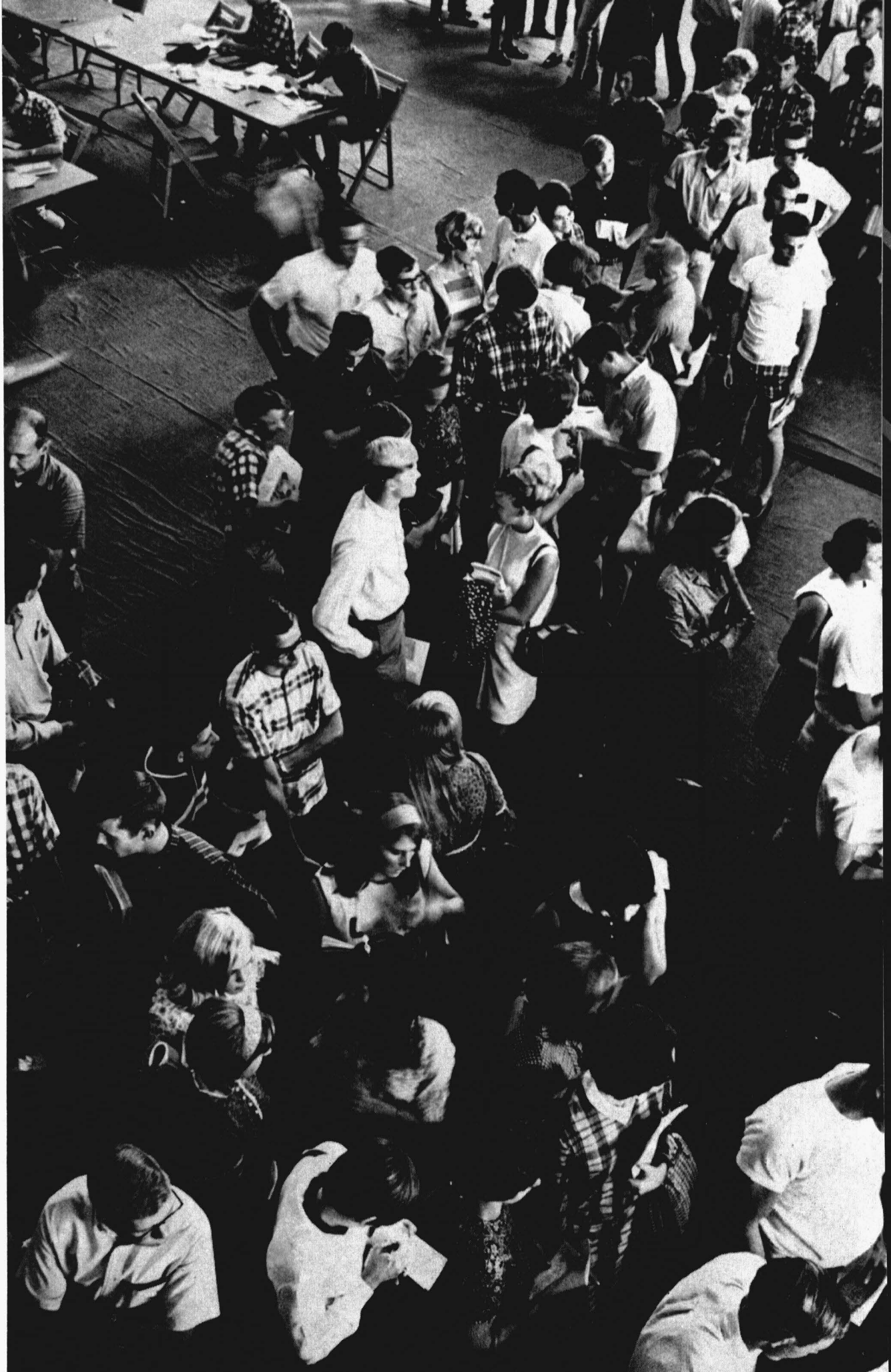
“THE UNIVERSITY: Introduction to the World of

A carefully planned orientation minimizes confusion.



Col. Edward F. Thelen, foreign student adviser, speaks to approximately 125 new foreign students who bring the total on campus to roughly 500. Below: a student reads the instructions of the president of the Certified Chinese Students Association: Listen to Col. Thelen and do what he tells you to do. Opposite page: a line of students serpentine through registration.







Cheerleaders, Tiger mascot, and pom-poms make a stir at a pep rally.



An orientation scar.



But, in the end, orientation is mostly new students meeting with the people who will teach and advise them in these first years away from home.

An orientation is a looking back, a looking ahead

Ideas" was discussed that evening by a panel of members, moderated by Dr. Herbert Schooling, dean of faculties. The next day, students heard another panel, led by Dr. Robert Burton, assistant dean of the College of Education, discuss the evolution of higher education and its relationship to past societies in a program entitled: "The University: A Look into the Past."

Student leaders discussed "The University: A Place for the Active Student" in another panel program. Later the newcomers received information about the major student personnel services, including Student Financial Affairs, Student Health Service, the Mental Hygiene Clinic, Testing and Counseling Service, and the Dean of Students Office, in a program called: "The University: Student Personnel Services."

THE CHANCE TO GET TO KNOW University leaders occurred that evening when deans and directors of the University's Schools and Colleges met with students in their divisions to discuss divisional topics. The next morning, September 8, freshmen registration began.

Tours of the campus and the Library were provided for all new students. Foreign students met with their advisor for a special program. The Association of Women Students gave a Coke party for new women students. In the afternoon, a faculty panel, led by Capt. Edward S. Bridges, assistant professor of aerospace studies, discussed the leadership responsibilities of the modern university to the twentieth century in a program called: "The University: A Look into the Future."

Faculty members joined students for dinner in residence halls, fraternities, sororities and student cooperatives on September 8. Later, students had the opportunity to meet Chancellor Schwada and their deans and division leaders at the Chancellor's Reception. A Dance was held on the terrace of the Student Union.

Graduate students were recognized in a special program: "The University, Learning by Association." Students met members of the Graduate Student Policy Committee and the Dean of the Graduate School.

AND, ON SEPTEMBER 12, classes began!



PHOTOS BY J. EDWARD KIM.

Dan Devine Assesses the Season

*Missouri's coach analyzes his team and its opponents
for Missouri Alumnus readers*

REALIST DAN DEVINE has no delusions about the '66 team. He realizes that the loss of such key players as Johnny Roland, Francis Peay, Butch Allison, Gary Lane and Bruce VanDyke is not going to be made up easily. And the man whose overall record is third best in the nation among major college coaches knows that the early, tough non-conference schedule (Minnesota,

Illinois and UCLA before the frost is on the pumpkin) may not be a help either. In fact, Dan was pessimistic when interviewed by *Missouri Alumnus* shortly before season play got underway.

"I do think," he told us, "that the pre-season polls which picked us to finish fourth in the Big Eight conference (behind defending champion Nebraska, Colo-

Band and Parents' Day at M.U. October 15

A MAJOR ATHLETIC-SOCIAL EVENT on the campus will be Band Day and Parents' Day in connection with the Tigers' football game with the visiting Oklahoma State team on Oct. 15. Jack Matthews, Dean of Students, notes that for the first time last year, the University inaugurated an informal meeting for parents at which time selected administrative and faculty members met with them to answer "questions from the floor." He says a similar meeting is planned for this year but "since most of the questions in 1965 were not related to the academic 'side of the house,' we will have on the panel this year the University officials who deal mainly with 'out-of-class activities.'"

Appearing on an hour panel session, starting at 9:15 a.m. (Registration is from 8:30 a.m. to noon in the Student Union), will be:

Dr. William Galeota, Director of Student Health Service; Prof. Paul King, Director of Testing and Counseling Service; Dr. Charles W. McLane, Director of Admissions; Harold Condra, Director of Housing; Allan W. Purdy, Director of Financial Aid; and Col. James R. Johnson, Professor of Military Science.

Beginning at 10:30 a.m. and lasting an hour, an informal reception will be held in the main lounge of the Student Union. Chancellor John W. Schwada and all of the Academic Deans from the Student Personnel Services will be on hand to greet and meet the parents of new students. Dean Matthews says "it should be noted that October 15 is not a general Parents Day, but is a Parents Day for only the parents of our new students."

Other features of Parents Day: Lunch, starting at

11:30 a.m., with all food services of the Student Union, the Student Commons and the University Residence Hall made available to parents of the new students—in addition, many campus living units, fraternities, sororities and co-ops, will hold special luncheons for parents of members; the game, beginning at 1:30 p.m.; Open Houses, starting at 4:30 p.m., and a Touchdown Dance in the large ballroom of the Student Lounge, 8:30 p.m. on.

Mizzou's marching band, Alexander Pickard directing, will perform at half-time with a varied program in recognition of Band Day on Oct. 15.

Dr. Weaver Pays Tigers Surprise Visit

COACH DAN DEVINE and his hard-working Tiger team had a surprise—and welcome—visitor in one of their opening drills. New University President John C. Weaver showed up unexpectedly on the afternoon of Sept. 1. Just that morning he had assumed the school's top administrative post. It was a case of the Big Ten meeting the Big Eight, so to speak—since Dr. Weaver came to Columbia from Ohio State.

The squad has his word that he wants "to excel in physics, in athletics, and in everything."

"I recognized Dr. Weaver from his pictures," reported Devine, "and invited him to speak to the team. He spoke briefly, then kept insisting that he didn't want to interfere with our work."

The very next morning, the Tigers had one of their best workouts.

rado and Oklahoma) seem pretty accurate at this time, based on returning veterans, and I only can hope that we will embarrass the experts."

Devine admitted the Tigers have a sound number one backfield, but he indicated some shortcomings in other areas, noting:

"The quality of our offensive line is unproven, and we

are not deep in good halfbacks."

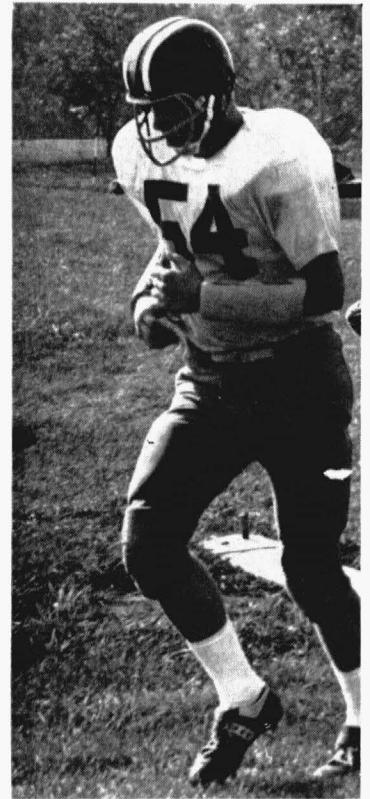
Getting into specifics regarding the conference, the popular Tiger coach (85-23-7 in eleven seasons: three at Arizona State and the last eight at Mizzou) gave us this assessment:

"Within the Big Eight, I think there are far more tougher teams this year—better balance throughout.



Tiger Line Coach and Dan Devine's Number One Assistant Al Onorfrio gives linemen a few fine pointers on how to win the game "up front" during a recent practice session.

Senior center Richard Kistner (54) goes through a running drill in one of the pre-season practice sessions.



Much may depend on how 'Little Gary' does

But Nebraska still looks to be in a class of its own. They are big, strong and experienced at Lincoln—not to mention, deep."

On the positive side of the Tiger gridiron ledger, Devine has high regard for his senior halfbacks—Charlie Brown and Earl Denny.

"I don't think anybody has a better tandem of halfbacks," he said of his two threats who have had knee operations, "but if either one gets hurt, you'll notice the difference."

Of Danny Sharp, the sophomore quarterback from Kansas City, Kan., Devine commented:

"I think he's a brilliant prospect. I suspect he'll play."

THE COACH obviously has much confidence in his defensive unit, led by Co-Captain Bill Powell, the former guard who was switched to tackle last spring. Others include ends Russ Washington and Dan Schuppan; guard Don Nelson; halfback and Co-Captain Jim Whitaker; and safety Skip Grossnickle.

A key man on offense promises to be junior signal-caller Gary Kombrink of Belleville, Ill., being counted on to replace Lane in the starting backfield.

"Gary has a big advantage," Devine told sportswriters and sportscasters on their annual pre-season tour of all

THE 1966 FOOTBALL ROSTER

Name	Pos.	Ht.	Wt.	Age	Class	Hometown
Adams, Sam	FB	6-0	200	18	Soph.	Midland, Tex.
Alton, Jack	HB	6-1	185	22	Sr.	Centralia
Anderson, Jim	T	6-1	220	19	Soph.	Webster Groves
Bailey, Harold	E	6-4	215	20	Soph.	St. Louis (Riv. G.)
Barnett, Gary	HB	6-0	210	19	Soph.	St. Louis (Parkway)
Barnes, Michael	T	6-2	210	19	Soph.	Canton, Ill.
Bates, William*	HB	6-1	195	21	Sr.	Storm Lake, Ia.
Benhardt, Elmer	E	6-3	200	19	Soph.	St. Louis (Riverview)
Berg, Marty*	E	6-3	218	19	Jr.	Riverside, Ill.
Bernsen, Rich**	FB	6-0	200	21	Sr.	Ferguson
Boyd, Roger	T	6-1	220	20	Soph.	Butler
Brewer, Richard	G	6-1	220	20	Jr.	Southfield, Mich.
Brown, Charlie*	HB	5-8	185	20	Sr.	Jefferson City
Butler, Gary	G	5-11 1/2	205	19	Soph.	Jefferson City
Chettle, Alan*	G	6-3	222	21	Sr.	St. Louis (U-High)
Cook, Greg	HB	6-0	190	19	Soph.	Seneca
Danilko, Jim	HB	6-0	190	19	Soph.	Rhineland, Wis.
Deneault, Conrad	QB	6-1	190	20	Soph.	New Bedford, Mass.
Denny, Earl**	HB	6-1	205	21	Sr.	Golden City
Elzea, J. Garth	HB	6-1	210	19	Soph.	Springfield, Ill.
Ewing, Michael	HB	6-0	188	20	Jr.	Ladue
Frieders, Gary*	G	6-0	205	20	Jr.	Bay City, Mich.
Garber, Carl	G	6-0	212	20	Soph.	St. Louis (Cleveland)
Grana, David	FB	6-0	202	21	Sr.	St. Louis (S.W.)
Griffin, William	QB	6-0	175	21	Jr.	St. Louis (CBC)
Grossnickle, Gary*	HB	6-1	185	21	Sr.	Kirksville
Hall, James	E	6-1	195	23	Sr.	Springfield (H)
Hauptman, Joe	E	6-1	195	19	Soph.	Granite City, Ill.
Hiles, Joe	FB	6-1	205	19	Soph.	Granite City, Ill.
Hobik, Wayne	G	6-0	190	19	Soph.	Chicago, Ill. (Weber)
Jonaitis, Edward	E	6-2	195	19	Soph.	Hesperia, Mich.
Jones, Curtis	T	6-2	230	20	Jr.	St. Louis (Summer)
Jost, Jim	G	6-1	210	21	Jr.	St. Louis (B. D'bg.)
Judd, Jim	E	6-2	200	19	Soph.	St. Louis (Roosevelt)
Juras, Jim	E	6-0	195	20	Jr.	St. Louis (McBride)
Kazyak, John	T	6-0	220	18	Soph.	Auburn, Mich.
Kahl, Frank	FB	6-0	190	19	Soph.	Shipman, Ill.
Keith, Jim	G	6-0	200	19	Soph.	Oklahoma City, Okla.
Kemperman, Steve	E	6-1	204	20	Jr.	Grand Rapids, Mich.
Kistner, Richard*	E	5-10	200	22	Sr.	Kansas City (St. P-X)
Kombrink, Gary	QB	5-10	180	21	Jr.	Belleville, Ill.
Lang, Larry	HB	5-10	190	20	Jr.	Lee's Summit
Lewis, Mearle	G	6-0	200	19	Soph.	Mahomet, Ill.
Lischner, Barry	FB	6-1	210	20	Jr.	Pittsburgh, Pa.
Melton, Bobby	T	6-4	205	19	Soph.	Belleville, Ill.
Meyer, John	HB	5-11	190	19	Jr.	St. Louis (U-High)
Moore, Larry	HB	5-11	195	19	Soph.	Timewell, Ill.
Mungai, Lee	G	6-0	215	21	Jr.	Berwyn, Ill.
Murphy, Brian	HB	5-11	198	22	Jr.	Peoria, Ill.
Nelson, Don**	G	6-0	210	23	Sr.	Fairmont, Minn.
Parker, Bob	T	6-3	215	19	Soph.	Taylorville, Ill.
Pepper, Alan	G	6-0	200	20	Jr.	Ladue
Pera, Michael	E	6-3	205	18	Soph.	Hinsdale, Ill.
Phelps, Garnett	QB	5-11	180	19	Soph.	Louisville, Ky.
Powell, Bob*	HB	5-11	198	19	Jr.	Collinsville, Ill.
Powell, Bill**	T	6-1	215	21	Sr.	Jefferson City
Rees, Conway	C	6-2	199	19	Soph.	Sedalia
Sangster, William	QB	5-10	165	19	Soph.	Columbia

Schmitt, Bill	E	6-3	200	19	Soph.	Imperial
Schmitz, Bill	HB	5-9	190	19	Soph.	Lakewood, Colorado
Schuppan, Dan**	E	6-0	195	21	Sr.	Columbia
Scott, Keith	T	6-2	225	20	Soph.	St. Louis (CBC)
Sharp, Danny	QB	6-1	180	19	Soph.	Kansas City, Kan.
Short, Roger	T	6-3	215	21	Jr.	Ferguson
Stevens, Gil	E	6-3 1/2	210	19	Soph.	Joplin
Stoeckel, Ron	QB	6-0	180	18	Soph.	Belleville, Ill.
Thomas, Jon	HB	5-10	195	19	Soph.	St. Louis (Mehlville)
Tiefen, Larry	HB	6-0	180	19	Soph.	Excelsior Springs
Tinsley, Austin	HB	5-11	185	19	Soph.	Alton
Thorpe, Ray*	HB	5-8	175	21	Sr.	Overland
Valentik, Jim	HB	6-1	195	22	Sr.	Hannibal
Veech, James	G	6-1	200	21	Sr.	Normandy
Vereecken, Rene	FB	5-11 1/2	190	19	Soph.	Berwyn, Ill.
Washington, Russell*	E	6-6	250	19	Jr.	Kansas City (S.E.)
Weber, Charles	FB	6-0	180	19	Soph.	Jefferson City
Weber, James Leroy	C	5-11	215	20	Jr.	Perryville
Weber, Jim Leonard	T	6-0	220	21	Jr.	Jefferson City
Wehrli, Roger	HB	6-0	185	19	Soph.	King City
Wempe, Michael	T	6-3	225	20	Jr.	Lawrence, Kan.
Whitaker, Jim*	HB	6-0	190	21	Sr.	Kansas City (R)
White, Henry	FB	6-2	230	19	Soph.	Carrollton
Wiley, Gary	HB	6-1	165	19	Soph.	Columbia
Willsey, Jim*	G	6-0	215	20	Jr.	Gary, Ind. (Calumet)
Wilson, Bob	C	6-2	205	19	Jr.	Jefferson City
York, Larry	T	6-3	218	19	Soph.	Quincy, Ill.
Ziegler, Bob*	HB	5-11	185	20	Jr.	St. Louis (B. D'bg.)

*—Indicates number of years lettered

THE SCHEDULE

Sept. 17	MINNESOTA at Columbia (2-3-1)	1:30 p.m. CDT
	(The Tigers won, 24-0)	
Sept. 24	ILLINOIS at Champaign (1-2-0)	1:30 p.m. CDT
Oct. 1	UCLA at Los Angeles (0-1-1)	1:30 p.m. PDT
Oct. 8	KANSAS STATE at Manhattan (34-13-4)	1:30 p.m. CST
Oct. 15	OKLAHOMA STATE at Columbia (10-2-0)	1:30 p.m. CDT
	(Band/Parents' Day)	
Oct. 22	IOWA STATE at Columbia (36-16-6)	1:30 p.m. CDT
Oct. 29	NEBRASKA at Lincoln (25-31-3)	2:00 p.m. CST
Nov. 5	COLORADO at Columbia (21-6-3)	1:30 p.m. CST
	(Homecoming)	
Nov. 12	OKLAHOMA at Norman (18-33-5)	1:30 p.m. CST
Nov. 19	KANSAS at Columbia (35-30-9)	1:30 p.m. CST

Tickets are \$5, \$25 a season. Write the Athletic Department, Ticket Office, 125 Rothwell, Columbia, Missouri 65201.

The University Freshman Football team will play two at-home games and two on the road during the '66 season. The first contest will be on Oct. 14 at Columbia against the Missouri Valley "B" team and the second game—also at home—will be on Oct. 21 against the Iowa State University yearlings.

The first away game will be played Oct. 28 at Lincoln against the University of Nebraska freshman eleven and the second on Nov. 11 at Lawrence versus the University of Kansas first-year players.

the Big Eight camps. "He thinks like I do . . . and he's a spunky, little guy."

Rated a strong option runner but just a so-so collegiate passer, the 183-pounder, who stands only 5-10, worked as a summer counselor at a boys camp in southern Missouri and managed to get in some extra-curricular help from St. Louis Cardinal Quarterback Charley Johnson, in the art of tossing the football. Johnson and teammate Sonny Randle co-managed the camp.

Kombrink, an all-stater at Belleville Township High under Bob Frala, newly-appointed Missouri freshman

coach, said Johnson helped him a lot. "He changed my motion by stressing that I get more body into my passes. Like a baseball catcher, I was just throwing with my arm."

So how little Gary "pitches" in comparison to big Gary (Lane, three-time Big Eight quarterback) may well be the answer to the Tigers' football fortunes.

Back of it all is a brainy coach with organizational genius who gets the utmost out of players dedicated to keep Mizzou in the gridiron limelight. It looks like a long but interesting season with Dan Devine at the helm. □



Guard Bruce VanDyke



Halfback Johnny Roland

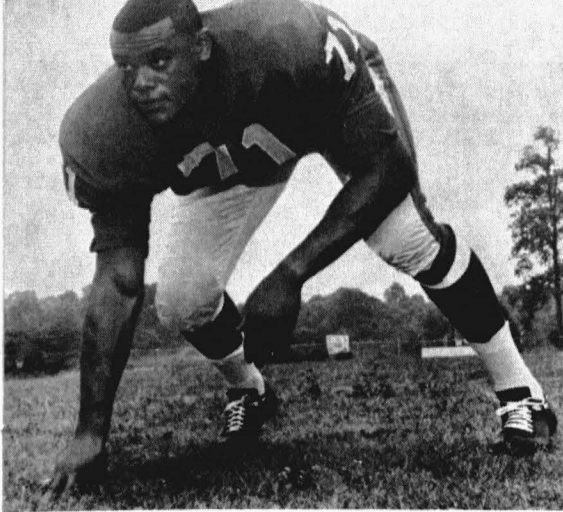


Quarterback Gary Lane



Johnny Roland flies through the air in an all-out effort, playing brilliantly in spite of a 33-7 shellacking at the hands of the visiting Baltimore Colts at Busch Memorial Stadium in a pre-season game.—Photo by John Oidtman '66 for St. Louis Cardinals

FROM ALL-AMERICANS



Tackle Francis Peay



*'Professional stars of tomorrow'
is the prediction for these
'65 Missouri football greats*

MISSOURI COACH DAN DEVINE is one of the nation's top college football coaches and several of his proteges already are on the threshold of greatness in the pro ranks as rookies. Indications are that Halfback Johnny Roland, Quarterback-Halfback Gary Lane and Tackle Francis Peay and Guard Bruce VanDyke will make the grade in their very first shot at the play-for-pay game following brilliant careers under Devine at Columbia. Few universities and colleges can boast such a crop of outstanding yearlings in pro football. Roland, Lane and Peay were near or on the top of every pro scout's list. VanDyke—a 12th round draft choice—has proved to be the real “sleeper” of the group.

A “YOUNG TURK” in the football Cardinals' camp is Johnny Roland, the Tiger All-America who earned plaudits on both offense and defense at M.U. The pre-season size-up by publicity man Joe Pollack of the Big Red's fourth-round draft choice from Corpus Christi, Tex., is that he has the size and speed to be an offensive starter—“to run inside or outside—can throw the running pass and has fine hands.”

The 6-2, 210-pounder owns many college offensive records despite playing mostly defense his last two years at Mizzou.

Johnny was one of the few bright spots in the Cardinals' disappointing 33-7 loss to the Baltimore Colts in a pre-season game. He caught four passes for 40 yards and picked up 23 yards on the ground, leading the team in both categories. But Roland wasn't happy, noting he hates to lose exhibition games just as much as any other games. His assessment of pro ball:

“The thing you notice first is the linemen. They're all big *and* fast, while in college they were usually one or the other.”

Roland, still wearing No. 23, as he did while a Tiger, says his blocking could stand a lot of improvement—especially “watching for those blitzing linebackers.”

In the Big Red's windup pre-season game, a 22 to 20 loss to the Bears in Chicago, Johnny made a good showing in place of the injured Willis Crenshaw. St. Louis

TO ROOKIES

By JIM SCOTT



A real—and vital—chore for an offensive tackle is pass-blocking. Above, pro rookie Francis Peay has managed to keep out the Detroit Lions' Larry Hand (74) long enough to enable Giant Quarterback (11) to get his pass away. The action occurred in a pre-season game, with former Tiger star lineman Peay (6-5, 250 pounds) battling the veteran Hand (6-4, 252 pounds). In his third game of exhibition play, Francis had perhaps his best pre-season day pass blocking, working against the Philadelphia Eagles' 6-3, 250-pound Don Hultz, a four-year pro defensive lineman.—*Courtesy New York Giants*

Gary Lane (15) prepares to block for Charley Harraway (31) as the Cleveland Browns meet the Baltimore Colts in the second half of the Browns' annual doubleheader at Cleveland Stadium August 26.—*Courtesy Cleveland Browns*



Complex systems must be learned fast . . . or good-bye

Globe-Democrat Sports Editor Bob Burnes labels the pair key men in the Big Red offense. After the Chicago game, Coach Charley Winner spoke of playing them in the same backfield, noting:

"We want to give Roland time to learn his plays at the fullback position, but he can run from either position in a split backfield right now because there's little difference in the plays."

The quiet, unassuming Roland was the first Negro named a football captain in the history of M.U. The '65 Tigers he helped lead wound up with a 7-2-1 regular-season record, finished just back of all-powerful Nebraska and went to the Sugar Bowl.

If Roland's pro debut is any indication of his future in the violent game for pay, Big Red foes will be in for many a busy Sunday afternoon trying to stalk this former Tiger. In the Cardinals' 16-13 squeaker over Philadelphia, Johnny led the team in rushing, caught two passes and was named NFL offensive player of the week. In the second game of the regular season, which the Cards won 23-7 over Washington, the rookie back rambled 22 yards for a touchdown. Said Winner about Roland:

"He is one football player who has lived up to his advance billing. He knows where the goal line is. But he's a real humble kid. The way he acts, you'd think he was a 20th draft choice."

LEARNING THE SYSTEM: That's one of a pro football rookie's toughest jobs, besides facing huge, agile giants who have been in the league for years and know the ropes.

Roland, Peay, Lane, VanDyke and company are in accord with one of the many fine prospects who just hasn't been able to make the Big Time yet—former Minnesota star quarterback John Hankinson, recently "farmed out" by the Minnesota Vikings. Said John shortly before he was cut from the squad by Coach Norm Van Brocklin:

"The offense is much more intricate than it was in college. I've got each play diagrammed in a book and there must be 200 plays in it. It's so heavy, I've been thinking about asking a lineman to carry it for me. We're given a certain number of plays one day and expected to know them the next. In college you get the plays at spring practice and had all summer to learn them.

"Also in college, freshmen and sophomores aren't expected to play much. So, you spend about two years learning the system. In the pros, if you don't grasp it

all quickly, it's good-bye."

As the pros cut their squads to the league maximum, Missouri fans across the nation could take satisfaction in the fact that many of the University's stars of '65 were not only retained, but were being regarded as the pro stars of tomorrow.

"COULD BE ANOTHER PAUL HORNING."

That's the assessment Coach Blanton Collier placed on Lane just before the Cleveland Browns kicked off the '66 season in defense of their Eastern National Football League championship.

The Browns haven't rushed Gary in his first year as a pro. They have been bringing him along patiently, slowly and have converted him from quarterback to a running halfback. The switch of Lane, reportedly the recipient of a \$300,000, three-year package deal after starring as an All-Big Eight signal-caller for three seasons at M.U., indicates Cleveland considers him a good run-and-pass prospect. In college, the field general from East Alton, Illinois, was most effective in running Devine's option or bootleg plays. One of the Tigers' fastest, most versatile backs, Gary was a conference total offense pace-setter, and a team top scorer, passer, rusher and punter.

Coach Devine commented that "while Lane may need additional training, either as a quarterback or halfback, to help the Browns in the future, he is a very gifted athlete, and I know that he will deliver."

When Lane signed with Cleveland it was announced that he would be used strictly at his familiar quarterback post, with the idea being he would eventually become signal-caller Frank Ryan's replacement. Then Fullback Jimmy Brown announced his retirement, and Lane was shifted to a running back.

According to Wallack, Lane—"if an emergency arose"—could play quarterback for the Browns. Ryan and Jim Ninowski have been the team's one-two punch at the position. Ol' Mizzou observers believe Gary Lane can do the job at QB, HB or you name it—emergency notwithstanding.

ONE OF THE '65 TIGER STARS who apparently is going to make the grade as a pro is Peay, the New York Giants' No. 1 draft pick. Peay, like Roland and other rookies, had a late start in his training because of being with the College All-Stars. Publicity Director Don Smith describes his progress in the first month with the New Yorkers as "very, very good." Reports Smith: "The greatest difficulty for any offensive rookie tackle is to

learn pass blocking as the pros play. In most instances, the rookie tackle is coming up against veteran defensive ends as big as he is, with great speed, strength and movement. Pass blocking for any tackle is a difficult job in that he must learn how to cope with both an inside rush and an outside rush, the frequencies of it and how to block within the seven-yard area of the quarterback's drop-back."

Smith told *Missouri Alumnus* that Peay had some trouble in his first pre-season game against five-year veteran Bobbie Richards of the Atlanta Falcons, a 6-3, 250-pounder, "but nonetheless earned the plaudits from the press for his doggedness and from that fact that while he was beaten a few times in the first half, worked even harder in the second half and gave Quarterback Earl Morrall some good protection from the right side. Insofar as blocking for running plays are concerned, Francis has shown great ability and strength in this area, especially in 'blocking down' against defensive tackles."

A unanimous All-America selection, the 22-year-old Pittsburgh resident weighs a solid 250 pounds and stands 6-5. His chief assets? Let the Giants detail them in their 1966 Press/Radio & Television yearbook:

"Francis has size, agility and second effort, all of which helped Missouri to a great season (in '65) and a Sugar Bowl berth where it scored a 20-18 victory over Florida. Peay's great power blocking produced most of the holes that enabled Missouri to roll up an average of 247 yards rushing per game during last season. He is rated a top pass blocker as well. Peay was a defensive tackle in his junior year at Missouri, but switched to offensive tackle in his senior year and became one of the Tigers' all-time greats in that position.

Peay and some other ex-Tiger standouts were given lucrative contracts when they signed on the dotted line to join the pros. St. Louis *Post-Dispatch* sportswriter Dave Lipman says Francis "commanded somewhere in the neighborhood of \$800,000 for a package covering just under 10 years." Roland's deal with the Big Red is

said to be less than that overall, under a shorter-term agreement—but plenty, nevertheless.

ANOTHER EX-TIGER SURVIVOR of the pre-season squad cuts as a pro football rookie is Bruce VanDyke, who hasn't gained the fanfare of some of his former Missouri teammates. Bruce was a 12th round draft choice of the Philadelphia Eagles. In college he played defensive tackle, offensive guard and was tri-captain on the Tigers' Sugar Bowl championship team. Bruce, of Buckner and Independence, Mo., was a three-year regular at Mizzou and was honored as an All-Big Eight lineman in his senior season. He was voted the best all-around lineman by teammates as both a junior and senior and played in the Hula Bowl.

The pre-season line on VanDyke was that he's an "excellent blocker, agile and quick."

Eagle publicity director Jim Gallagher told *Missouri Alumnus* that Bruce was hampered in early practice sessions by a pulled muscle in his right leg. Consequently, VanDyke was sidelined during the first two pre-season games and saw only limited action in a couple of others.

But then, reports Gallagher, Bruce recovered from his injury and got a starting shot against the Washington Redskins in the final pre-season tuneup contest when regular right offensive guard Jimmie Skaggs was out with injuries. VanDyke pleased both his head coach—Joe Kuharich—and line coach—Dick Stanfel—with his showing in the Washington game.

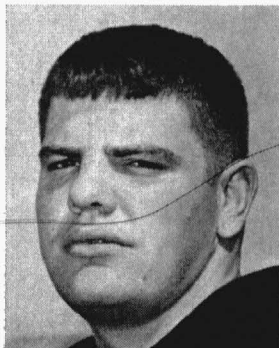
VanDyke came to the Eagle camp weighing about 225 pounds. But now his 6-2 frame has filled out to a solid 245 pounds and he has been holding his own in the violent man-to-man duels up front in pro ball.

Dan Devine, the man who coached the Tiger stars drafted by the pros, said he thinks very highly of them and observed:

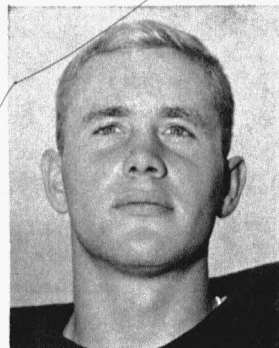
"All those boys are fine citizens, as well to top-notch football players. Fellows like Roland and Peay could see a lot of duty this year, while Lane may need additional training—either as a quarterback or halfback—to help the Browns in the future."

Other former Tiger gridgers who were given trials in pro football include:

Lineman Butch Allison, Number 2 draft choice of the Baltimore Colts. He and Peay comprised Missouri's bruising '65 blocking tandem of offensive tackles in the team's unbalanced line. Butch was an honorable mention All-America . . . Tackle Ron Snyder, free agent, with the Cardinals . . . Halfback Monroe Phelps, free agent, with the Buffalo Bills of the American Football League . . . End Jim Waller, also a free agent, with the NFL's Pittsburgh Steelers. □



Tackle "Butch" Allison



Tackle Ron Snyder

LETTERS

TO THE EDITOR:

Since we have a daughter on campus, we take a special interest in some changes in rules at the University. And my reaction to the relaxing of a number of these more strict regulations is that while we are experiencing many technological, social and economic changes, human nature is pretty much what it's always been and some guide-lines of moderation give assurance to both students and parents. And so the natural question in a parent's mind is, "Of what virtue are the relaxed, late hours and the all-night privileges?"

The St. Louis *Post-Dispatch* Sunday edition, July 24, 1966, carried an interesting article on research done at the University of Chicago in regard to the increased freedom given college students. It stated that most students are not ready to be on their own in a big university, that they can not handle and do not want too much freedom, and that many of them are feeling the need for somebody to "be firm."

It is interesting to me that at Missouri, where we have had many changes in rules and housing regulations, that the women's fraternity system is the segment of the campus which is continuing to try to maintain firmer guidelines in social patterns and living arrangements.

BETTY REAM BROCK, '39

Webster Groves, Mo.

TO THE EDITOR:

Enclosed in a clipping from the Redlands, Calif., *Daily Facts* newspaper, which gave me a chuckle, and I think readers of the *Alumnus* might have the same reaction. I recall the old wooden bridge across the "small brook"—as referred to in the article—but I don't remember it being called a "kissing bridge." To quote Dick West in his "Lighter Side" column:

"One of my colleagues who attended the University of Missouri showed me recently a solicitation that may be the epitome of irresistibility. It puts the arm on Missouri's loyal sons

and daughters for funds to restore 'the historic kissing bridge' that once spanned a small brook running across the campus. For only \$10, former students can have their names or initials, plus the name or initials of an old flame, carved inside a heart on one of the bricks in the reconstructed bridge. Wowee!"

JOSEPH C. SNYDER, '08

LaCrescenta, Calif.

TO THE EDITOR:

Would it be possible to put in your next issue an announcement to remind all Mortar Board Alumnae that there will be breakfast (coffee and rolls) before the Homecoming game. It has been at 10 a.m. for the past few years, but many women have not known about it—except those in the Columbia area.

MRS. HARRIET MICHAEL

Columbia, Mo.

(Ed's note: The Homecoming Game is against Colorado on Nov. 5.)

TO THE EDITOR:

Thank you for publishing the text inscribed on the bronze tablet on the Columns' marker (June *Alumnus*). How thoughtful of Mrs. Bordner to ask for the message there.

MRS. E. C. O'NEAL, '32

Sweet Springs, Mo.

(Ed's note: Credit should also be given the writer of the text. Belatedly, we've learned that the legend was researched by Mrs. Dorothy J. Caldwell and written by Dr. Richard S. Brownlee, both of the State Historical Society of Missouri and both graduates of the University.)

TO THE EDITOR:

Last year, prior to the football season, you published in the *Alumnus* the names, ages, weights, year, home town, etc. of the '65 football team, all classes. Several of us kept track of the Tigers through this means and found it most interesting and informative. If you plan to repeat this information again this year, I am sure you will

find many of the alumni very much interested.

EDWARD ANSON SPRAGUE, '14

St. Louis, Mo.

(Ed's note: Thank you, we agree. See page 15.)

TO THE EDITOR:

I would like to thank Mr. Bus Entsminger and his Alumni Development Scholarship Committee for the scholarship awarded me. It will most definitely lessen the financial burden placed upon my family. I thank the group again and look forward to the day when I can become an active member of the alumni organization.

VICTORIA A. HOOD

St. Louis, Mo.

(Ed's note: The above is typical of the many thank-you letters received. Others sending such letters include Miss Virginia Rose, Jefferson City, Mo.; Gaye Sherry Dyhouse, St. Louis; Edward Joseph Kaufman, Herculaneum, Mo.; James Herbert Hodges, Clever, Mo.; LeRoy Ressinger, Jr., Rogersville, Mo.; and a party from 23 Wilshire Terrace, Webster Groves, Mo., who forgot to sign a name. Bus and his group thank one and all for their appreciation.)

The USS Meyerkord, to be launched next year, is named after a graduate of the Class of 1960, the first Naval officer to be killed in combat in Viet Nam

The USS MEYERKORD now under construction will be a ship with a purpose—not in the manner of River Assault Group 23 on which the man for whom it is named met his death, but on the high seas where—after it is commissioned next year—it will patrol a course in the way of all destroyer escorts, keeping watch for enemy submarines and safeguarding convoys. This powerful and versatile ship is reminiscent of the man whose living service was devoted to freeing waterways of danger in far off Viet Nam—the first U.S. Naval officer to die in combat there and a 1960 graduate of the University of Missouri.

It was typical of a day in the Mekong River Delta for Lt. Harold Dale Meyerkord, USNR, to be poised for duty that began, in his own words, “as soon as the light goes, so will our patrols.” Then RAG 23 took off in shallow draft patrol crafts, commanded by a Vietnamese lieutenant with the helpful advice of the American Naval officers aboard. Senior Advisor to this River Force was Lt. Meyerkord, whose job in this “hide and seek war” plied on the thousands of miles of waterway in a country 9,000 miles from his hometown of St. Louis, Mo., was to keep the waters free of mines, to safeguard villages along the shore, and to fight the Viet Cong infiltrating everywhere. This is not an easy task, when mines may be relaid as soon as a boat has passed, when every hut must be searched, and when ambush from the jungled shoreline is a constant hazard.

To train men by example, stepping into the total blackness of a hut, finger on the trigger; to offer reassurance when fear is constant to a people who can only feel the stability if language is a barrier; to lessen the tension with laughter; to show raw nerve in the face of danger takes a real “man.” Such a man was epitomized in the person of Lt. Meyerkord of whom the late Dickey Chapelle wrote in the February, 1966, issue of *National Geographic* when reporting the “Water War in



Lt. Harold Dale Meyerkord, USNR

A Destroyer

Viet Nam” published after her own death on the fighting front.

Death came to Lt. Meyerkord, too, after she had accompanied him on one of his riverboat stories. March 16, 1965, was similar to the multiple other days he had spent since transferring to this particular group on January 13. Caught on his boat in a heavy ambush, he was wounded by the first fusillade from the Viet Cong, and returned enemy fire at point-blank range until a second bullet killed him.

“BY HIS SUSTAINED LEADERSHIP, initiative and courage, Lt. Meyerkord contributed greatly to the United States effort in Viet Nam and upheld the highest traditions of the Naval Service,” said Secretary of the Navy, Paul H. Nitze, in announcing that his name had been selected for the DE-1058 of the Knox class, to be



Lt. Meyerkord, standing top left, and another U.S. Naval Advisor, aboard a River Force boat patrolling in the Mekong Delta. The rivers serve as roadways of the jungle and are vital for access, communications and as marketways for rice produced inland.—Official U.S. Navy photo.

LCDR Tom Wooten, left, and Lt. Meyerkord assigned to River Assault Group 23, one of seven divisions of the South Vietnamese River Force which are manned by Vietnamese and advised by U.S. Navymen.—Official U.S. Navy photo.



to Honor a Missouri Navy Hero

built in San Pedro, Calif., and launched in mid-1967. He is the second American to be killed in action in Viet Nam to be so honored.

His selection followed the posthumous award of the Navy Cross—highest Naval recognition—and the Air Medal for prior service in which he completed twenty missions in support of the Vietnamese against communist guerilla action, in low-level reconnaissance flights under enemy fire to secure intelligence data. He also held two Purple Hearts.

Meyerkord was commissioned June 10, 1960, after completing U.S. Navy Officer Candidate School at Newport, R. I., serving thereafter for four years on board the cruiser USS Los Angeles and the destroyer Duncan before reporting to the U.S. Military Assistance Command in Viet Nam, July, 1964. In early service in Viet Nam he was instrumental in turning defeat into

victory when aboard a command boat that reconnoitered ahead of friendly forces, discovered a Viet Cong canal block, and set up a shore post to direct artillery fire, air strikes and medical evacuation. Again in January, after transfer to the small boat force, he led a flotilla to success when its Vietnamese commander was wounded. His final heroic action was again the result of riding the lead boat to direct operations and set an example for Vietnamese Naval personnel.

Meyerkord is survived by his wife, the former Jane Schmidt, who received her B.S. in education from the University of Missouri, also in 1960; a young daughter, Lynne, and his parents, Mr. and Mrs. Harold E. Meyerkord, all of St. Louis. He was graduated from Riverview Gardens High School in 1955 and received a bachelor of science degree from Missouri in political science.

□



University Landscape Architect Willard S. Summers and a scale model of a planting in front of Read Hall, a long-range Alumni Association project dating back 25 years.

He Landscapes Missouri's Campus

*A continuing program
of designing and planting
is the responsibility of
Professor Willard S. Summers*

By R. R. THOMASSON

*Assistant Director Emeritus of the Cooperative
Extension Administration.*

ON THOSE OCCASIONS when we return to our Alma Mater we are inclined to take for granted an attractive campus, appropriately landscaped. But there is one man who knows that such things do not just happen. He is Professor Willard S. Summers, University Landscape Architect and Professor of Landscape Design. His is the job of developing and maintaining the landscape on the 800 acres in four campuses of the University System at St. Louis, Rolla, Kansas City and Columbia. For lack of space we will concern ourselves primarily with the Columbia Campus.

How is such a stupendous task approached? Professor Summers gives first priority to landscaping new structures and making them an integral part of the Campus. A building completed in the spring or summer has an atmosphere of belonging by the time the freshmen are welcomed in September. The ground has been sodded and if trees have not been planted, they soon will be. Two or three years may be required to complete the landscape with trees, shrubs and vines. But the character of the plan will be established right away by putting in key plants.

Next in order is the elimination of signs of repair work such as the installation of new sewers, steam lines, underground power lines and the like. That is a continuous task and no small one.

When time permits there is always work to be done around the older buildings where the landscape of a previous era is beginning to show sign of deterioration. An example is the removal of the Scholar or Pagoda tree from the grounds of the President's House. It seemed peculiarly appropriate to have a scholar tree in that location. And many people will miss the cool, cream-colored blossoms that adorned the tree every August. But unfortunately it was decayed and damaged beyond repair. And other young scholar trees have been planted elsewhere on the Campus.

One of the newer pieces of landscape design of which Professor Summers is justly proud is that around the Fine Arts Building. A rather general demand for something to soften the vertical lines of the building led to extensive tree planting. Korean dogwood would have been used if trees of suitable size had been available. Sweet gums were a fortunate second choice when trees of satisfactory size were located at a St. Louis nursery. Seventeen of them have transformed the appearance of the building.

It was a sizeable undertaking. The trees, 35 feet tall



An eddy away from mainstream of traffic at the northwest corner of Jesse Hall. The upright yews are at least 30 years old.



When a lead man suspects parasites, inspection follows quickly.



Northern edge of Red Campus looking northeast. To the left a bank of burning bush (*euonymus*), in the foreground, hard maples, and pin oaks in the background. These are the trees replacing elms lost to sleet storms.

and with a diameter of six to seven inches, together with the necessary ball of earth, weighed some three tons each. The sweet gum, one of the most ornamental of shade trees, has been used extensively in other locations on the campus. The star shaped leaves are a lustrous green until autumn changes them to yellow, red, purple and intermittent hues. The textured gray bark is attractive at all seasons and the decorative seed balls, suggesting Christmas ornaments, persist until well into the winter.

ANOTHER IMPORTANT CAMPUS FEATURE that Professor Summers has landscaped is the Mall leading from Conley Avenue to the Medical Center as an extension of Ninth Street. The main features here are the two fountains and the rows of Scarlet oaks on the outside of the two walks. The same species has been planted around the Library. Japanese weeping cherries, such as those growing in Potomac Park in Washington,

D. C., would have given the Mall a cosmopolitan atmosphere, but it was found that they are not adapted to the inferior soil of that location. Scarlet oaks, which grow in almost any soil, were finally selected in the place of the cherries.

Mayfield Ginkgos, graceful, slender trees some 30 feet tall, are used for accent at the fountains. Being a male tree, the Mayfield does not bear the foul smelling fruit found on female trees. Also at the fountains are Spartan roses and Japgarden junipers. The Mall planting is not complete though the general character of the landscape has been achieved. In time it is expected to be one of the focal points of the Campus. In summer the avenue of oaks will provide pleasant shade for the pedestrian while the fountains will lend a cooling effect. The pleasant sod of zoysia grass is expected to make a carpet of green during the most trying summer conditions. Its aggressive tendencies might create a prob-

lem elsewhere, but on the Mall it will be contained by concrete walks.

Other landscape features of special interest are the pin oaks surrounding Frances Quadrangle, the redbuds in front of the Agriculture Building on Hitt Street and the sunken gardens with mugho pines at the Bingham dormitory group.

The pin oaks around Frances Quadrangle are the third set of trees that the writer has known in that location. The first were American elms. In 1913 they were beautiful trees. But they succumbed to age and ice storms. The Moline elms that followed them were soon victims of a severe sleet and ice storm. The pin oaks that have been in position for some 18 years bid fair to add their charm to the area for many years to come.

The redbuds by the Agriculture building are of special interest for two reasons. Though of native Missouri origin, their clear pink color is more attractive than is the magenta of the usual redbud. They were found in the wild and developed by an alumnus of the Missouri College of Agriculture, Howard Keeton, now a nurseryman in Kansas City, with the assistance of a Kansas nurseryman, John J. Pinney.

AN EFFORT IS MADE, when feasible, to establish a relation between the landscape and the activity within the building being landscaped. For example, ginkgo and pine trees have been planted around the Geology Building. The ginkgo is well known as a survival from geological ages. Both ginkgo and pine are the object of study by Geology students. The sweet gums planted around the Fine Arts Building are especially appropriate for that situation. There is artistry in every feature of the leaf, its shape, texture and color. In winter the appealing seed balls and attractive gray bark hold our interest. The lines and shape of the tree have an artistic appeal at all times.

Professor Summers explains that budget considerations make necessary a low maintenance development. For the most part this rules out such features as hedges, flowers and other items calling for more than nominal care. The use of ground covers rather than grass reduce upkeep requirements in many situations. Frequently they give a pleasing effect as well as reducing the cost of upkeep. A notable example is the use of Purple Leaf honeysuckle on the north side of the Fine Arts Building. It softens the lines of retaining walls and at the same time eliminates mowing where that operation would be difficult and time consuming. Low growing junipers are also used extensively. Some of the varieties are Andorra, Blue Rug and Bar Harbor.

In Professor Summers, the University has chosen a man well qualified to assume the enormous responsi-

bility of perpetuating on all four campuses a landscape system that gets its message of beauty and feeling for the finer things of life across to all who view it. His academic training includes a B.S. in Agriculture with a Major in Landscape and Floriculture from the University of Missouri, followed with a degree of Master of Landscape Architecture from the University of Michigan. Experience includes ten years as Campus Landscape Architect and teacher of Landscape Architecture at Washington State University. He has had two hitches here at the University of Missouri totalling some seven years as teacher and Campus Landscape Architect. Now he is challenged with the campus job alone which in his words "has unlimited possibilities."

An effort is made by Professor Summers to keep a good representation of native trees on the campus. There are oaks and sweet gums in abundance. A few Black or Sour gums have been added recently. Lindens, maples, possum haws and hawthorns are to be found. The Washington hawthorn, one of the best, is supplemented with Winter King, a variety of Washington. Winter King is a recent introduction that provides a magnificent show of coral colored haws well into the winter. Three are to be seen on the southeast corner of the Library Campus. Others, somewhat larger, are on the grounds of the Dobbs dormitories.

Professor Summers likes to think of each of the four Campuses in terms of an arboretum for the use and pleasure of visitors as well as for faculty and students. Classes in Botany, Geology, Forestry and Horticulture make constant use of the material available. He hopes to maintain a wide variety of exotic as well as native trees and shrubs.

The landscape of the campuses should, in the opinion of Professor Summers, "provide a background for campus activities including everyday student activities; contribute to the cultural atmosphere of the academic community and provide appropriate esthetic beauty." It gives dignity, atmosphere and character to the Campus. That graduate who does not carry away from the University a store of inspiration and appreciation of such intangibles as beauty, culture, and spiritual values has missed something. A well landscaped campus may be quite as valuable in developing a well rounded individual as are class rooms and laboratories.

The one area of University grounds that can be recognized by old timers as very much the same that it was 50 years ago is the park-like northeast corner of the Red Campus. And that wooded spot of unspoiled beauty with its nostalgic memories is in danger. Plans to use it as a building site threaten to eliminate this one last bit of natural charm. □

“I’ve built a dynamic business of my own, but I’ve always had time for my family and community affairs . . . not many businessmen can say that.”

— Donald F. Lau, C.L.U., Detroit



“I’ve been a Mass Mutual representative for 26 years and almost from the beginning I was able to build a satisfying business of my own. It wasn’t easy. You’ve got to be on your toes. Competition is keen. How successful you become depends almost entirely on your initiative. You set your own goals and work hard to attain them. But the financial rewards and the personal satisfaction you can gain are well worth the effort. “Most of my clients are busy executives and professional people, in many respects very much like myself. I’ve found that many of them are constantly on the road or being transferred to different cities. They haven’t been able to plant

their roots as firmly in any one community as I have here.

“As a Mass Mutual representative I’ve had time to spend with my wife and children and play an important part in the affairs of my community. Of course, I’d be involved in community activities no matter what my business, because it always has been important to me. But working locally has given me a chance to become deeply involved in many long-range community activities.”

Mr. Lau has qualified for the Million Dollar Round Table, top flight national insurance organization, since 1951 and has sold 2 million dollars or more of insurance each year for the

past ten years. He has earned the National Quality Award every year since 1946. Mr. Lau is one of a highly skilled group of professionals representing Mass Mutual, a company over a century old, with over \$3 billion in assets. If you’re looking for the same kind of satisfaction in your career as Mr. Lau has found in his, write a personal letter to: Charles H. Schaaff, President, Mass Mutual, Springfield, Massachusetts. He’s always interested in hearing from a good man.

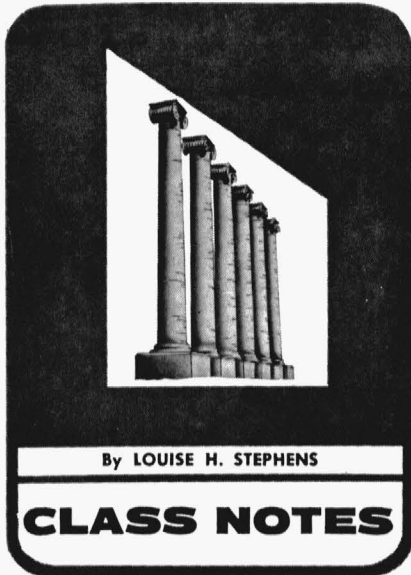
**MASSACHUSETTS MUTUAL
LIFE INSURANCE COMPANY**
SPRINGFIELD, MASSACHUSETTS • ORGANIZED 1851



Some of the University of Missouri Alumni in Massachusetts Mutual service:

Lawrence C. Mitchell, '28, Syracuse
William J. Clark, C.L.U., '47, 2nd Vice-Pres.
George W. Denton, C.L.U., '47, New York
Robert L. Benning, '54, '58, Atlanta
William C. Lenox, C.L.U., '55, Clayton
J. Wiley Moreland, Jr., C.L.U., '55, Houston
John W. Blakemore, Kansas City

William S. Comfort, C.L.U., '60, St. Louis
Dale E. Klepinger, St. Louis
Gary E. Matthews, Clayton
Edwin W. McMullen, Syracuse
Charles W. Scott, Jr., Kansas City
Drexel H. Turner, St. Louis
Myron J. Woodruff, Kansas City



'07

FORREST C. DONNELL, AB '04, LL.B., LL.D. '60, was one of five St. Louis members of the American Bar Association honored recently for more than 50 years of continuous membership in the Association. The award, a personally inscribed gold certificate, was accepted by his son. Mr. Donnell, Governor of Missouri in 1941-45 and U.S. Senator in 1945-51, is a senior member of the firm of Donnell, Schoenbeck & Donnell, St. Louis, Mo.

'09

Mrs. G. R. Johnson (ILA GEORGE), Agric., lives in California with her daughter.

ALLAN VAUGHAN ELSTON, BS CE, Santa Ana, Calif., is the author of a recently published book, "Seven Silver Mountains."

'13

Mrs. M. OPAL ZIMMERMAN Fore, BS Ed., executive director of the Iowa Mental Health Authority for 18 years, retired in June to enter private social work practice in Des Moines, Iowa. Following the announcement of her retirement, Mrs. Fore received scores of letters lauding her work from state and national leaders in government and mental health agencies. She also was presented with the Gold Bell Award of the Iowa Mental Health Authority.

'14

HARRISON L. CHANCE, BS Agr., professor emeritus of microbiology at the University of Oklahoma, was hon-

ored in June when the Missouri Valley branch of the American Society for Microbiology presented him with one of the first two life memberships ever given by the group. Dr. Chance, who taught at OU from 1931 until his retirement in 1959, has received grants since retiring to continue his research.

'16

IRAM O. ROYSE, BS Engr., and his wife (RUTH TANDY, AB, BS Ed.) celebrated their 50th wedding anniversary on June 1. Mr. Royse, who joined Ralston Purina Co., St. Louis, Mo., in 1920, was general office manager at the time of his retirement in 1956. The Royses, who live at 624 S. Meramec Ave., St. Louis, have two daughters, a son, and seven grandchildren.

'19

JOHN H. LEAVER, Agric., CLU, is associated with the Robert E. Bird agency of the Mutual Benefit Life Insurance Co., St. Louis, Mo.

'20

REX M. WHITTON, BS Engr., DS '61, federal highway administrator, has been named the 1966 "Man of the Year" by the International Road Federation, for distinguished service in national and international road developments. Whitton is the first American to be honored by the Federation. He is married to the former CALLIE MAUD LOWE, Arts '24, and lives in Washington, D. C.

'21

Mrs. ETHELYN SMITH Hall, Arts, Educ., a retired teacher, lives in Clio, Calif.

'22

GROVER GODWIN, BS ME, 164 N. Meramec Ave., Clayton, Mo., has become a life member of the University Alumni Association.

'23

Former Missouri Governor JOHN M. DALTON, LL.B., LL.D. '63, has been elected chairman of the board of trustees of Westminster College, Fulton, Mo. He also serves as national chairman of the Churchill Memorial Committee at Westminster.

Civic leader GERALD N. WADDELL, BS Engr., a Cadillac-Oldsmobile dealer in Salina, Kan., recently became chairman of the Salina City Commission, which also carries the title of Mayor. Waddell, who is married to the former KATHERINE DAVIS, AB '22, was the

subject of a feature article, "Community Welfare Is First with Waddell," in the November, 1965, issue of *NADA Magazine*.

'24

WILLIAM T. KIEFFER, Agric., Chartered Life Underwriter and executive vice-president of LISCO, the St. Louis (Mo.) general agent of National Life Insurance Company of Vermont, attended a seminar on manpower development and financial management skills at the firm's home office in Montpelier, Vt., in June. He and his wife (CATHERINE MORGAN, BS PA '25) live in Clayton, Mo.

'25

ELMER T. CARL, LL.B., Independence, Mo., assistant vice-president of Employers Reinsurance Corporation, has retired after 41 years with the company. He plans to practice law.

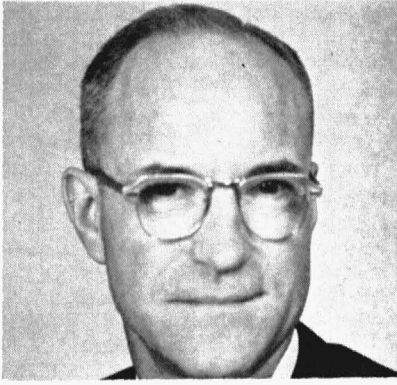
'26

The Chamber of Commerce of Grant's Pass (Ore.) recently selected Mrs. F. I. Bristol (ESTHER PLATT), AB, as 1965 "Distinguished Woman of the Year." The second woman to receive this honor, she was presented a bronze plaque for 30 years of leadership and community services to civic, youth, church and political groups. A native of St. Joseph, Mo., Mrs. Bristol currently serves as president of American Field Service, as an elder of Bethany Presbyterian Church, and holds membership on the Josephine County Juvenile Advisory Council, Community Concert Board, Rotary Ann and PEO, and is legislative chairman of the Republican Women's Club.

CHARLES E. CHAPEL, AB, a 16-year veteran of the California Assembly, has served as a member of Assembly committees on Revenue and Taxation, Public Utilities and Corporations, Trans-



Chance, '14



Ensminger, '35

portation and Commerce, and Military and Veterans affairs. He is married, has four children, and lives in Palos Verdes Estates, Calif.

BOWER ALY, AM, of the University of Oregon Department of Speech, has been named first recipient of the National University Extension Association's Julius M. Nolte Award. Dr. Aly has served as executive secretary for more than a third of a century of the National Committee on Discussion and Debate, an affiliate of the NUEA.

'27

A revised edition of "Complete Book of Rifles and Shotguns," by JOHN W. (Jack) O'CONNOR, AM, of Lewiston, Idaho, was released in July by the publishers, Harper & Row, Inc., New York City. In his book, Mr. O'Connor (one of the country's expert skeet, target, and game shooters) gives specific tips for shooting small and large game in North America, Africa, India and other countries; he also gives tips on all phases of rifle, pistol, and shotgun shooting.

RUSSELL R. CASTEEL, AB '24, LL.B., vice-president of Olin Mathieson Corporation, was the recipient of a 30-year service award at the June meeting of the St. Louis (Mo.) Society of Financial Analysts.

Mrs. SARA ANN WHEELER HATTON, BJ, has been elected president of Alpha Phi International sorority. Her husband, FRED HATTON, Arts '25, is vice-president of Hotel Muehlebach, Kansas City, Mo., where they live at 15 W. 53rd St.

LEO C. MCKINNEY, AM, has retired after 39 years as a chemistry teacher at University City (Mo.) High School. He is married and has five children.

'28

ALEXANDER C. HASKELL, AM, of North Augusta, S. C., is a producer and distributor of dairy products.

Mrs. Frank W. White (SUELLA RASH), BS Ed., who retired as a full-time teacher in 1957, continues to do substitute work in the Shelbina (Mo.) school system. She also keeps busy with church, club, and civic activities.

HUGO J. SCHERER, BS Engr., blasting supplies production coordinator, Explosives Production Department of Atlas Chemical Industries, Inc., retired on Aug. 1, after 38 years of service. The Scherer family lives at 130 N. Broom St., Wilmington, Del.

'30

ELGIN CRULL, Arts, an ex-newsman who has managed for 27 years the largest council-manager city in the nation (Dallas, Tex.), has resigned to become vice-president of the Howard Corporation and of the Republic National Bank in Dallas. As City Manager of Dallas, Crull has also held top posts in the national city managers professional association.

DONALD S. DAWSON, AB, has been promoted to the rank of Major General in the Air Force Reserve. He also serves as the 1965-66 president of the Reserve Officers Association of the U.S.

HOWARD M. DIAL, BJ, AM '31, is a communications specialist in agriculture at the University of California at Berkeley.

The Lawyers Co-Operative Publishing Co., Rochester, N. Y., and the Bancroft-Whitney Co., San Francisco, publishers of law books and legal periodicals, have jointly conferred upon MARION A. HOY, AB, a citation of honor as a contributing author to the first encyclopedic work on trials to be published in the country. An attorney with the firm of Duday & Hoy, Oak Park, Ill., he also lectures on Wills, Trusts, and Estates before the Oak Park branch of the Finance Forum of America. Hoy, who is listed in the 15th edition of "World Who's Who in Commerce and Industry," is married and lives in River Forest.

Mrs. ORIA FIPPS LONG, BS Ed., AM '45, art instructor at Hickman High School, Columbia, Mo., for over 10 years, retired at the end of the 1965-66 school year. Her husband, J. HAROLD LONG, BS Agr. '25, BS Ed., AM, Ph.D. '36, taught biology at Christian College, Columbia, for 33 years until his retirement.

HARRY E. JENKINS, AM, since 1946 president of Tyler (Tex.) Junior College, is not only recognized as an outstanding educator, but for his leadership in civic activities. The recipient of the T. B. Butler award for "civic and educational leadership" in 1961, and the Distinguished Service Award of the National Junior College Athletic Association for

his outstanding contributions to the national junior college movement, he was most recently honored at a special assembly and reception at the college. Dr. Jenkins, who has served on educational committees at state and national levels, is the only junior college president to have served as president of the Texas Association of Colleges.

Mrs. R. R. Rosengren (EVANGELINE MOORE), BS Ed., is a media specialist with the NEA in Washington, D. C.

WILLIAM W. COPELAND, BJ, for 11 years a foreign service officer with the USIA, is presently attached to the Division of Policy and Plans in Washington, D. C. He has previously served as Counselor of Embassy in Manila, Tokyo, and Madrid, and as director, Far East and director of Press and Publications. He is married and has three sons, William Jr., Douglas, and John.

'31

Judge L. FRANK COTTEY, AM '29, LL.B., of Lancaster, Mo., is serving as special judge of the Springfield Court of Appeals for the current term. He has held similar assignments on the St. Louis Court of Appeals and more recently, on the Kansas City Court of Appeals. This latest assignment gives him the distinction of being the only circuit judge in Missouri to have been selected to serve as special judge on all three of the state's appellate courts.

'32

LOVAN HALL, BJ, president of Auto-lease Group, Inc., and its associated companies, New York City, has been elected to membership in the Union League Club of New York. He resides in Bronxville, N. Y.

Mrs. William B. Myers (CLARA HANSER), BS Ed., Columbia, Mo., received the Doctor of Social Work degree at Washington University, St. Louis, Mo., in June.

'33

ROY E. RHOADES, Engr., has been appointed manager of Ford Motor Company's St. Louis assembly plant in Hazelwood, Mo. Rhoades, who most recently has been assistant plant manager, joined Ford in 1939 at the Kansas City assembly plant. He is married, has four children, and lives in Webster Groves, Mo.

'34

Mrs. MARY HARRISON HAYNES, BS Ed., writes that she and her husband have four children: Mary and Charles (both M.U. graduates), Sallie and Bill,

both of whom attend M.U. Husband CHARLES HAYNES, BS Engr. '30, MS EE '32, BS Ed. '33, is superintendent of engineering with Empire District Electric Co., in Joplin, Mo. Mary does substitute teaching in the junior and senior high schools there.

'35

LEONARD E. ENSMINGER, BS Agr., now heads the Department of Agronomy and Soils in the School of Agriculture and Agricultural Experiment Station at Auburn University, Auburn, Ala. He joined the faculty there in 1944 and has been acting head of the Department since early 1965.

ELLIS RAINEY, AM, veteran high school principal at Lebanon, Mo., became director of secondary education in late June. His duties include developing educational specifications for new buildings, public relations, and bond issue promotion.

'36

CLAIR CALLIHAN, Jr., BJ, has been elected vice-president of Latham-Laird & Kudner, Inc., advertising agency. He is moving from the agency's Chicago office to their New York office. Callihan was at one time a reporter for the *St. Louis Globe-Democrat* and later chief announcer for Radio Station KSD.

June 22 was WILLIAM C. (Bill) SCHUPP (AM) Day in McAllen, Tex., when the Rotary Club there so proclaimed it and paid tribute to Schupp in his 20th year as City Manager. Speakers (and a musical tribute) pointed to Schupp as "the one person who has provided the spark" for city progress and "more than any other citizen shaped the destiny of the city for 20 years."

'37

Col. THOMAS R. BRUCE II, who recently retired as Army ROTC commander at Purdue University, Lafayette, Ind., after 33 years of Army service, has been named assistant director in the student loan office at Purdue. Mrs. Bruce is the former FRANCES WISE, BJ.

CHARLES E. FERGUSON, AB, M.Ed. '52, has resigned as superintendent of schools at Brookfield, Mo., to accept an administrative position in the Grandview (Mo.) School District. ROY RUPP, M.Ed. '60, high school principal in Brookfield, has been hired as Ferguson's successor.

JOHN D. WINFREY, BS BA, is president of the International Shoe Co., St. Louis, Mo.

'38

WILLIAM F. HARRISON, BS Agr., owner-operator of a mushroom business at Hermann, Mo., since 1944, has discontinued the operation. The explanation for the demise is simple, Harrison says; it is a lack of experienced personnel to make the business pay. He and his wife (MARY WILSON, BS HE '34) live in a restored period home located near Hermann.

Mrs. W. T. Callaway (HELEN BULLOCK), BJ, special writer for the *Dallas (Tex.) News*, has received the publicity award of the Texas Association for Retarded Children for her seven-part series entitled "The Unforgotten." Mrs. Callaway has won a number of awards for interpretive reporting, including the Anson Jones Award in 1959, the Austin Headliners Club Award, and the Press Club of Dallas Award.

WILLIAM L. BREWSTER, BS Ch.E., is Southwestern sales manager, Port of Galveston, and manager, Pier Point Packers Division, Houston, Tex.

NOEL P. RALSTON, BS Agr., AM '39, has been appointed deputy administrator of the Federal Extension Service. He will be on a year's leave from Michigan State University, where he has been director of the Cooperative Extension Service and assistant dean of the College of Agriculture. The family has moved to Washington, D. C.

'39

WILLIAM S. HAYES, AB, AM '42, president of Alice Lloyd College, Pippa Passes, Ky., received an honorary Doctor of Laws degree at Eastern Kentucky State College at Richmond, in May. Mrs. Hays is the former EDITH WORSTELL, GN '41.

MARION E. GIBBINS, AM, his wife (HELEN GRISWELL, BS Ed.) and family have moved to Neosho, Mo., where he has been appointed dean of Crowder College. He had been dean of St. Joseph (Mo.) Junior College since 1957.

'40

RICHARD L. ARMFIELD, Arts, Journ., is publisher of the *Mountain Echo* at Ironton, Mo.

MARIE BRITE, BS HE, of Salem, Ill., has been in Extension Service work for 25 years.

ALFRED L. GOLDMAN, BJ, has been elected executive vice-president of Benton & Bowles, New York City. In addition to this top overall supervisory position, Goldman will continue to serve both as creative director and as a mem-



Goldman, '40

ber of the board of directors. He, his wife, and their three children live in New York City.

Mrs. LAURA ZEWICKI Knoerr, BS HE, owns the Linn (Mo.) Department Store.

ALVIN KRAENOW, Arts, teaches at Linn (Mo.) High School.

GEORGE MOWRER, BS Ed., M.Ed. '46, D.Ed. '56, director of education and guidance for St. Louis (Mo.) public schools, has resigned to join the University of Missouri at St. Louis faculty as a professor of education in the university's new School of Education. He lives with his wife and two children in Richmond Heights, Mo.

A highlight of the two-week workshop at Drake University, Des Moines, Iowa, in June, was a talk by SAUL PETT, BJ, Associated Press special correspondent. Pett, one of only five men ever designated special correspondent by the AP, discussed press associations and the service they give newspaper readers. He also participated in several workshop sessions. He and Mrs. Pett (LEANORE GREEN, BS Ed.) live in Port Washington, N. Y.

Dr. ELWIN P. SCOTT, BS Med., 3258 Lafayette, St. Louis, Mo., has become a life member of the University Alumni Association.

BENTON J. UNDERWOOD, AM, professor of psychology at Northwestern University, Evanston, Ill., was awarded the honorary degree of Doctor of Science at June Commencement Exercises of Cornell College, Mount Vernon, Iowa.

MAURICE RABIUS, BS Agr., vocational agriculture instructor at Higginsville (Mo.) High School, has taken over as president of the Central District of the Missouri Vocational Agriculture Teachers Association.

JACK V. FOX, BJ, has been named a roving correspondent by United Press International to cover special assignments and major breaking news stories. He has

been editor of UPI Newsfeatures since 1962, and before that had worked in Denver and New York UPI bureaus and in London as news manager for Great Britain.

'41

LOUIS G. GERDES, BJ, city editor of the *World-Herald*, Omaha, Neb., since 1951, has been promoted to executive editor. With this promotion Gerdes assumes the directorship of the news department.

MARY SUE HETHERINGTON, BJ, who received an A.M. degree from the University of Houston in June, has accepted appointment as an instructor of English at Lamar State College of Technology in Beaumont, Tex.

ERNEST C. MILBERGER, AB, AM '43, one of five Sohio (Standard Oil Co.) employees who invented and developed the company's own patented acrylonitrile process, has been awarded a "Modern Pioneer in Creative Industry" scroll by the National Association of Manufacturers. Milberger is at Research and Development's Warrensville (Ohio) Laboratory.

H. TUDOR WESTOVER, BS Ed., M.Ed. '42, D.Ed. '47, president of Mineral Area Junior College in Flat River, Mo., for the last nine years, has been named president of Three Rivers Junior College at Poplar Bluff, Mo.

WILLIAM EDWARD ROBERTS, AM, received the Ph.D. degree from the University of Colorado, Boulder, in June.

'42

JAMES N. HADDOCK, AB '40, BS Med., AM, has been promoted to assistant professor of Clinical Psychiatry at Washington University School of Medicine, St. Louis, Mo.

FOREST D. KASER, BS Agr., is a supervisor for Weyerhaeuser Sales Co., in Dallas, Tex.

HELEN E. NIBLACK, M.Ed., teaches at Webster Groves, Mo.

HARRY E. HAMMER, BJ, of St. Louis, Mo., assistant to the president-public relations of the Missouri Pacific Lines, Texas and Pacific Railways, has been elected president of the Railroad Public Relations Association. His wife is the former MARJORIE HOLLEY, Arts.

'43

CHARLES W. CARTER, Arts, vice-president and general manager of the S. C. Stevenson Monument Works at Moberly, Mo., recently won an award in monumental design in a nationwide contest sponsored by the American Institute

of Commemorative Art. Carter, the father of six children, is on the board of directors of the Moberly Chamber of Commerce and the Rotary Club, and on the board of trustees of the Moberly Public Library.

SYLVAN H. WITTWER, Ph.D., is director of the Agricultural Experiment Station, assistant dean of Agriculture, and professor of horticulture at Michigan State University, East Lansing. Dr. Wittwer is a member of numerous professional horticultural science associations; has authored over 275 papers and scientific reports in his field; and is the recipient of a number of scientific achievement and teaching awards.

'44

W. ROBERT SEMPLE, BS PA, has managed to include a wide variety of outside interests and community services in addition to his duties as City Manager of Ypsilanti, Mich. Featured in a recent editorial in *The Press of Ypsilanti*, Bob, his wife, and daughter Chere (12) moved there in 1963 from Mexico, Mo., where he had been City Manager since 1958.

'45

Mrs. Ed Edstrom (EVE MARK), BJ, award-winning social welfare reporter for the *Washington (D. C.) Post*, has been elected president of the Women's National Press Club. Her husband is public affairs adviser to the U.S. Chief of Protocol.

JAMES S. CARTER, BS BA, of Arthur Andersen & Co., has been named vice-president of the St. Louis Chapter of the Missouri Society of Certified Public Accountants.

CHARLES H. GARRISON, Arts, Manchester, Mo., is assistant controller for United Van Lines, Inc.

'46

DONALD J. BRYDON, BJ, business manager of United Press International's Southwestern division since early in 1965, has been appointed general manager for Asia by the UPI. His headquarters will be in Tokyo, Japan. Brydon served as general news manager for Asia from 1962 until his transfer to Dallas last year.

RICHARD D. CROAK, Arts, has been re-elected a vice-president of the American Investment Co., St. Louis, Mo.

Chief researcher for the nation's number one best-selling book, "The Last Battle," was the author's wife, Mrs. Cornelius Ryan (KATHRYN ANN MORGAN), BJ. She also gathered material for Ryan's previous smash hit, "The Longest Day." Earlier, Mrs. Ryan



Ellington, '47



Jones, '48



Schrom, '49



Huddleston, '49

worked for Conde-Nast and Time, Inc., publications, wrote speeches for world-famous architect Frank Lloyd Wright, and in 1962 collaborated with Alan King (did all the writing actually) on his book. She and her husband (who has been in Hollywood winding up preparatory work for the movie based on his last book) have two children, Geoffrey (13) and Victoria (9), and live in Ridgefield, Conn.

'47

M. C. ANDREWS, BS EE, and his wife (HELEN PIHLBLAD, BS BA), and children John, Jeffry and Laura, left recently for Zurich, Switzerland, where he will become director of the IBM Research Laboratory.

WILLIAM J. BALTRUSAITIS, M.Ed., has been promoted to Lieutenant Colonel in the Air Force. A member of the Strategic Air Command, he is stationed at Grand Forks AFB, N. D., as an operations staff officer.

THEDA A. DOWELL, Educ., Arts, of Culver City, Calif., received the M.D. degree at June Commencement Exercises of the California College of Medicine at Pasadena.

CHARLES G. ELLINGTON, BS BA, has joined Rexall Drug and Chemical Company's senior corporate staff as vice-president, Organization and Management Development, Los Angeles, Calif. He had been associated with Max Factor & Co., as vice-president and director of operations.

ROBERT J. BODINE, Arts, is president of Bodine Foundry Co., St. Louis, Mo.

JACK EWING, BJ, Franklin, Mich., is an advertising sales executive for Farm Journal, Inc., Detroit.

CURTIS R. WINTERS, Jr., B&PA, will represent the University of Missouri on Oct. 24 at the 75th Anniversary Convocation of the California Institute of Technology, Pasadena. Winters is owner-operator of Anchor Shop, Inc., Newport Beach, Calif.

JOHN E. HORST, Jr., BS Agr., and his wife (SARAH PINNEY, BS '48) each received the Master of Arts in Education degree at Washington University, in June. They live on Rt. #1, Cedar Hill, Mo.

'48

CHARLES E. FRENCH, BS Agr., Purdue University agricultural economist since 1949, has been named head of the department of agricultural economics there. Dr. and Mrs. French and three children, Ned, Hugh and Sarasue, live at West Lafayette, Ind.

RALPH E. JONES, BS Agr., who has been in Laos the past three years as an education adviser with the Agency for International Development, has returned to Washington, D. C., for reassignment. His home address is Cooter, Mo.

Mrs. BETTY GUM Minich, BS HE, teaches home economics at Alton (Mo.) High School. She has four daughters, ages 16, 15, 9 and 5.

NED S. SCHROM, BS Ed., M.Ed. '49, has been appointed dean of students for the new Richmond College of the City University of New York. He will also assist the president in organizing the college for a September, 1967, opening. Dr. Schrom is married, has two children, Nancy (19) and Michael (12), and lives in Upper Montclair, N. J.

SIDNEY WEINTRAUB, BJ, AM, who received the Ph.D. degree in Economics at The American University (Washington, D. C.) in June, has been appointed deputy director of the Agency for International Development mission to Chile. He will also serve as Counselor of Embassy for Economic Affairs, helping to administer Alliance for Progress programs.

ROBERT A. BURNETT, AB, has been named publisher of *Better Homes and Gardens* magazine. A Meredith Publishing Company vice-president, he has been advertising director of the magazine for the past five years. He, his wife (GLORIA COWDEN, Arts '49) and five children live in Pleasantville, N. Y.

'49

Maj. JOHN BARBATO, BS BA, has been awarded the Air Force Commendation Medal at Headquarters, Space Systems Division, Los Angeles, Calif., for meritorious service as deputy chief and chief of the information office at SSD. He now serves as information officer with the office of aerospace research in Washington, D. C.

JAMES A. HOPSON, BS BA, received the Doctor of Education degree at Washington University, St. Louis, Mo., in June.

ROBERT H. HUDDLESTON, BS PA, has completed ten months of study at the Industrial College of the Armed Forces at Fort McNair, Washington, D. C. One of 180 key civilian officials of the Federal Government and senior officers of the military services selected to attend the course, Huddleston is assistant chief, Organization and Personnel Division, Goddard Space Flight Center, National Aeronautics and Space Administration in Washington, D. C.

CONRAD L. LOHOEFER, BJ, 4003 49th St., Lubbock, Tex., has become a

life member of the University Alumni Association.

DONALD H. MARSHALL, BJ, has been re-elected to a second term as president of Talking Tapes for the Blind, a program of Volunteer Film Association. Marshall is an account executive with the public relations firm of Robert A. Willier and Associates, Clayton, Mo.

RAYMOND C. SMITH, BS Agr., is chairman of the Department of Agricultural Economics at the University of Delaware at Newark.

CHESTER J. TELLER, BS Agr., deputy director of markets for the New Jersey State Department of Agriculture, Trenton, and former USDA market news reporter, has been named director of communications for the College of Agriculture and Environmental Science at Rutgers University. Mrs. Teller is the former SANDRA BURDETTE, Arts.

GENE D. HOFFMAN, BJ, Terrace Park, Ohio, has been elected a vice-president of the Kroger Co., with over-all responsibility for manufacturing activities. He had headed the company's processed foods division.

DONALD L. SPRY, LL.B., Kirkwood, Mo., is an attorney for the Missouri State Highway Commission.

'50

Capt. GEORGE L. DIEDRIECH, BS Ed., recently completed an aerospace operations course at the Air University, Maxwell AFB, Ala., where he received four weeks of specialized training in astronautics and its related sciences. He has returned to Wright-Patterson AFB, Ohio, for duty with the Air Force Systems Command.

KENNETH F. NOFFTZ, BS Agr., Stet (Mo.) vocational agriculture instructor, is one of six teachers in that field to receive a distinguished service award for outstanding service in vocational agriculture and related community activities. Mr. Nofftz, who is called on frequently to judge livestock shows and fairs, is married and has two daughters, Alice (15) and Susan (13).

J. RALPH SCHILDKNECHT, BS For., has been appointed district manager of the Eugene (Ore.) life division of Aetna Life & Casualty. He had been brokerage supervisor at the Portland (Ore.) office for the past year.

Judge WILLIAM M. TURPIN, LL.B., a practicing lawyer in Bowling Green, Mo., since 1950, was appointed circuit court judge last fall. He is married to the former JUANITA CUNNINGHAM, BS Ed. '49, and they have two children.

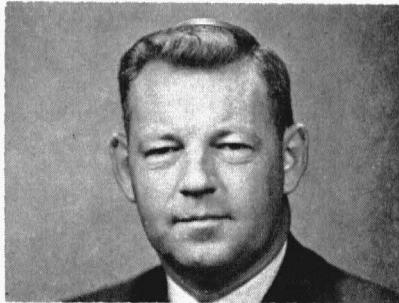
N. G. WILSON, BS Ch.E., has been promoted to Manager, Engineering De-



Thompson, '51



Hook, '52



Heidbreder, '52

partment, in Shell Pipe Line Corporation's head office in Houston, Tex., where he had been Manager, Project Engineering.

LEONARD J. HOOPER, BJ, AM '52, assistant professor at the School of Journalism and Communications, University of Florida, Gainesville, was the recipient of a 1966 Fellowship Award of the Foundation for Public Relations Research and Education. Under the Foundation program, he spent five weeks this summer with the public relations department of the Aluminum Company of America in Pittsburgh, Pa.

MARLIN S. WERNER, AB, received the Ph.D. degree at Ohio State University, Columbus, in June.

'51

DONALD I. GARNETT, BS Ch.E., is product specialist for E. I. du Pont de Nemours & Co., Wilmington, Del.

SARA N. HARRIS, Grad., has been promoted to Lieutenant Colonel in the Air Force. An administrative staff officer, she has been reassigned from Honolulu, Hawaii, to the Air University's Aerospace Studies Institute at Maxwell AFB, Ala.

PAUL E. JAMISON, AB, is an assistant editor for Transportation and Distribution Management, Washington, D. C.

Dr. ELWOOD L. JONES, BS Med., is a psychoanalyst with Blakely Psychiatric Group in Seattle, Wash.

MARY ELIZABETH TARPLEY, BJ, Webster Groves, Mo., received the Master of Arts in Education degree at Washington University, St. Louis, Mo., in June.

WILLIAM E. THOMPSON, Arts, has been awarded the silver wings of an American Airlines flight officer upon completion of training at the airline's flight school in Fort Worth, Tex. He, his wife, and children Daniel, Scott, and Marjorie, live in Dallas, Tex., where Thompson is based.

ROBERT LAWRENCE BERENS, AB, AM '57, received the Ph.D. degree at the University of Colorado, Boulder, in June.

It was incorrectly stated in the June issue of the *Alumnus* that Dr. M. PINSON NEAL, Jr., AB '49, BS Med., had been promoted to full professor at the University of Wisconsin. The fact is, he has been promoted to full professor in Radiology at the Medical College of Virginia, Richmond, where he had headed the Diagnostic Division of Radiology since July, 1965. Dr. Neal served at the University of Wisconsin hospitals from 1957-1963, when he moved to Richmond.

'52

CLAUDE E. FERGUSON, BS Agr., M.Ed. '62, is a counselor at Eldon (Mo.) High School.

BILL B. HOOK, BS Sta., MS '53, has been appointed corporate controller of OMNITEC Corporation, Phoenix, Ariz. He had been assistant controller at Motorola's Military Electronics Division plant in Scottsdale, Ariz. Mrs. Hook is the former JOY SPIEGELBERG, AB.

CHARLES H. HOUSEMANN, BS, BA, C.L.U., has been elected first vice-president of the St. Louis (Mo.) Chapter of the American Society of Chartered Life Underwriters.

Lt. Col. WILLIAM M. KLEMME, AB '50, BS Med., an Army medical officer, is stationed at Letterman Hospital in San Francisco, Calif. He and his wife have four sons, Richard (10), William Jr. (8), James (7) and John (6).

DAVID H. LILLARD, BS Ch.E., with the Power Division of Black & Veatch,

consulting engineers in Kansas City, Mo., has been elected secretary of the Missouri Society of Professional Engineers. He and his wife (MARDEL LOFSTED, BS Ed.) live in Prairie Village, Kan.

J. ROBERT McGLASHON, Agric., has opened his own architectural office at 1027 E. 75th St., Kansas City, Mo. He had been associated the last three years with Harry L. Wagner, architect.

GLENN A. MILLER, M.Ed., and his wife (ANN ROBERTSON, BS Ed. '39) have been transferred from Minneapolis to Houston, Tex., where he is employed by Control Data at the NASA Manned Space Craft Center.

W. R. PIERCE, BS Ed., M.Ed. '59, D.Ed. '65, former superintendent of schools at Charleston, Mo., and more recently an associate professor of education at Western Kentucky University, has been named president of Creston Community Junior College at Creston, Iowa.

CHESTER C. SNYDER, Jr., Arts, has been elected an assistant cashier at the Hickman Mills (Mo.) Bank.

New life members of the University Alumni Association include WILLIAM A. (Bill) STAUFFER, BJ, and his wife (JEAN SHANLEY, BS Ed.), 4216 Greenwood Dr., Des Moines, Iowa; WALTER D. KARPIAK, AM, Sheer Rd., Averill Park, N. Y.; and ELDEN K. EWALT, BS Agr., RFD 2, Knox City, Mo.

The WILLIAM E. VESSER (AB) Agency of General American Life Insurance Co., was first in May among the company's 14 St. Louis general agencies in submitted life insurance production.

FREDERICK A. ARCHER, BS BA, received a Master of Theology degree in July at Southwestern Baptist Theological Seminary, Fort Worth, Tex.

CARL G. HEIDBREDER, Jr., BS Agr., assistant product sales manager, molding and extrusion materials, Plastics Sales, the Dow Chemical Co., has been named molding and extrusion district sales manager in Dow's Chicago and Minneapolis offices.

'53

CHARLES R. ALEXANDER, B&PA, of the Travelers Insurance Companies, was named Life Man of the Month for the second consecutive month for outstanding sales in April. He is attached to the Clayton (Mo.) Agency office.

Maj. RICHARD L. BETTS, BS EE, and Capt. MAX G. BODENHAUSEN, BS Agr., were graduated in June from the Air Force Air Command and Staff College at Maxwell AFB, Ala. Capt. Bodenhausen has been assigned to an Air Force unit in Washington, D. C.

DONALD A. BUESCHER, BS Agr., has been named second vice-president of the St. Louis (Mo.) Chapter of the American Society for Training and Development.

THOMAS W. CAMPBELL, BJ, of Riverside, Conn., has been named director of public relations for Geigy Chemical Corporation. He was formerly on the corporate public relations staff of the International Paper Co., in New York City. In his new capacity, Campbell will be located at Geigy's Administrative and Research Center in Ardsley, N. Y.

ROBERT P. ELMIGER, BS BA, of the Monsanto Co., was recently installed as an officer of the St. Louis (Mo.) Chapter of the Data Processing Management Association.

SHIRLEY MARIE LAMPE, AB, received the Master of Arts in Education degree at June Commencement Exercises at Washington University, St. Louis, Mo.

GEORGE GEAN LORANTOS, AB, has been named executive director of a newly organized non-profit organization, Educational Services for the Blind, Inc., 14 Hillcrest Rd., Medfield, Mass.

RICHARD L. (Dick) LEE, BS Agr., AM '58, agricultural editor and professor of extension education at M.U., has been named president-elect of the American Association of Agricultural College Editors. Mrs. Lee is the former BARBARA CHALENDER, H.Ec. '61.

'54

Capt. DALE W. BERKLEY, BS BA, is stationed at Tachikowa AFB, Japan.

Maj. GEORGE F. FISCHER, BS Agr., DVM, who graduated in June from the Army Command and General Staff College, Ft. Leavenworth, Kan., has been assigned to teach at the Army Medical Service Veterinary School, Chicago, Ill.

Capt. WILLIAM H. HESSELTINE, Jr., BS BA, was graduated in June from the Air Force Air Command and Staff College, Maxwell AFB, Ala. His wife is the former MARY GRIFFEN, BS HE.

Mrs. Donald Hunchberger (MARY SUE SIMMONS), Educ., is an employment counselor in Lee's Summit, Mo.

JAMES M. KESNER, Arts, technical sales representative, Plastics Division, Gulf Oil Corporation, has been assigned to the Detroit (Mich.) sales territory. He resides at 19641 Coral Gables Dr., Southfield, Mich.

JOHN B. MITCHELL, Ph.D., has been promoted to professor in the department of agricultural economics and rural sociology at Ohio State University, Columbus. He also serves as extension specialist in rural sociology for the Ohio Cooperative Extension Service.

Mrs. Ivan T. Myers (MARY YOUNG), Educ., writes that her husband has completed two years of service at Richards-Gebaur AFB, and has begun his residency at Jewish Hospital, St. Louis, Mo.

RICHARD J. SLAIS, BS BA, of Lunnehan, Slais & Co., has been elected a director of the St. Louis (Mo.) Chapter of the National Association of Accountants.

STEWART W. SMITH, Jr., AB, LL.B. '58, received the Master of Business Administration degree in June from Washington University, St. Louis, Mo.

ROBERT C. BUEKER, AB '54, who has taught at the University of Wyoming since 1964, has been appointed head of the department of mathematics at Western Kentucky University, Bowling Green.

'55

DON M. GRIFFIN, Engr., his wife, and daughters Debra and Catherine, have moved to Lakeland, Fla., where he is manager of the branch office of Kucera and Associates, consultant engineers.

G. ELDON BROWN, BS Agr. '56, MS '61, his wife (MARY LOU VANDEVIER, BS HE) and son Steven (2) live in Winter Haven, Fla., where Eldon is a plant pathologist with the Florida Citrus Commission.

JOSEPH L. FARMER, BS BA, has been named manager, agency, casualty-property department, at the Travelers Insurance Companies' Portland (Ore.) office.

HOWARD HEIDBRINK, M.Ed., D.Ed., '66, is one of two administrative assistants in the Springfield (Mo.) public school system.

Mrs. ANN WADLEY Shrader, BS Ed., Webster Groves, Mo., received the A.M. degree in June from Washington University, St. Louis, Mo.

Capt. WILLIAM H. WHEELER, BS BA, has been awarded the Air Force Commendation Medal for meritorious service as a project officer at Eglin AFB, Fla.

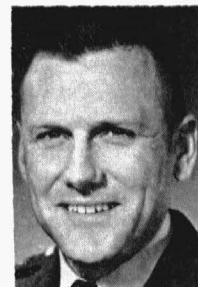
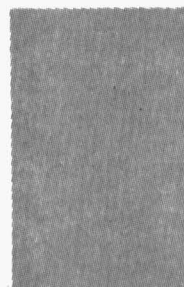
LEE C. BRIGHT, AM, former manager of the news bureau of Ozark Air Lines, has joined the public relations staff of Eastern Airlines as editor of the *Falcon*, the firm's employee publication, with offices in New York City. Bright is married, has one son, and lives in Yorktown Heights, N. Y.

Mrs. Erwin D. Rhodes (SUZANNE ACUFF), BS Ed., husband Dusty, and children, Linden (6) and Rocky (4), have returned to Kansas City after eight years in California. Dusty is in the home-building business in Kansas City.

JAMES GORDON WILL, BS BA, received the degree of Masters of Science



Campbell, '53



Fischer, '54



Mitchell, '54



Farmer, '55

in Commerce at St. Louis University in June. Mrs. Will is the former LEILA DAWSON, BS Ed.

'56

GEORGE W. COFFMAN, Jr., BS Agr., MS '60, is employed with the U.S. Department of Agriculture (European Common Market). His wife is the former BARBARA SUE EDWARDS, BS Ed. '59.

J. D. CRUMPACKER, BS Agr. '53, MS '55, and his wife (JANETT BOHLKEN, AB) live in Nashville, Tenn., where he is with the Tennessee Baptist Convention.

Lcdr. FRANK L. ENDEBROCK, BS CE, is stationed in Thailand with the Engineer Corps, U.S. Navy. (ROICC, Korat, Thailand, APO San Francisco 96233.)

DAVID HANSBROUGH, BS EE, and his wife became parents of a son, Kevin Lee, on March 21, in Milwaukee, Wis.

DONALD R. HEITGERD, Arts '53, and his wife (HELEN FINCH, Educ.) live in Seward, Neb., where she is an elementary school reading improvement teacher.

JAMES EARL MOSS, BS BA, AM '58, assistant to the director of the State Historical Society of Missouri and associate editor of the *Missouri Historical Review*, has resigned to become director of the Houston and Harris County Heritage Society in Houston, Tex. He and his wife (MARCIA MUELLER, BJ '57) have two children.

MURYL D. OLINGER, BS BA, MS '57, of Arthur Andersen & Co., has been elected a director of the St. Louis (Mo.) Chapter of the National Association of Accountants.

J. EDWARD TRAVIS, BS BA, has been appointed manager of the Paterson (N. J.) office of the Dictaphone Corporation. He and his wife (IRENE CARIFFE, Educ. '61) and two sons moved July 1 from their home in Kirkwood, Mo., to New Jersey. As a salesman in the St. Louis office of Dictaphone, Ed qualified in 1962, 1963, 1964 and 1965 for membership in the Dictaphone Achievement Club.

DON L. WERBY, BS BA, has been appointed director of Flexi-Van Sales and Service, New York Central System, with headquarters in New York City.

THEODORE CYRIL ZUPPA, M.Ed., of Aiken, S. C., was awarded the M.L.S. degree in June at Rutgers University.

'57

Dr. JOSEPH C. ARMSTRONG, BS Ed., MS '59, and his wife recently be-

came parents of a son, James Leland, in Addis Ababa, Ethiopia.

EUGENE E. DOBA, AB, has been promoted from a staff marketing assistant to a regional manager for the Maytag Company's Denver branch. He will serve appliance dealers in Western North Dakota, North Central South Dakota and Eastern Montana. He is married and has four children; they live in Mandan, N. D.

RAYMOND SMITH FERELL, BS For., received the Master of Science degree at Iowa State University, Ames, in May.

MARTIN JOHNS, BS Agr. '50, M.Ed., has been assigned to the Newton County (Mo.) Extension Office for training. He plans to become a youth agent.

ALLEN RAY KEATHLEY, BM, received the Master of Church Music degree in June at Southern Baptist Theological Seminary, Louisville, Ky.

LENA MAE LOVELACE, AB, was awarded the Master of Social Work degree at Washington University in June.

JAMES A. MONTGOMERY, BS BA, is the new manager of the St. Louis (Mo.) region for Smith Kline & French Laboratories, prescription drug firm.

LOWELL MILLER, BS Agr., MS '58, Ph.D. '60, is director of biological research in pharmaceuticals for Union Carbide at Decatur, Ill. Mrs. Miller (MARIAN COURANZ, BS HE '59) is secretary of the Macon County Home Economists in Homemaking. They have two children: Lowell Jr. (5½) and Jeanette Louise, six months old.

JOHN LAWRENCE WRAY, BS ME, received the MBA degree in June from the University of Santa Clara (Calif.).

'58

Mrs. DEBORAH JULIEN Culver, BS Nur., is an instructor at the Research Medical Center School of Nursing, Kansas City, Mo.

WILLIAM A. (Andy) DALTON, LL.B., and his wife (SUE ANN MAXWELL, AB, AM '59) announce the birth of a son in Springfield, Mo. They have another son, Sam, 3½.

MARVIN IRVIN EHRlich, AB, received the Master of Arts degree at Washington University, St. Louis, Mo., in June.

At a recent meeting of the Louisiana Press Association and the Louisiana State University School of Journalism, GORDON A. ERVIN, Arts, Journ., received third place for a series of three editorials he wrote while news editor of the *Springhill* (La.) *Press*. Ervin is now in a new position as technical writer for NASA in

the Boeing Launching Systems Division, Huntsville, Ala.

GEORGE P. HUBER, BS ME, MS '61, who received the Ph.D. degree in industrial engineering at Purdue University last January, is teaching in the Department of Mechanical Engineering at the University of Wisconsin, Madison. He and his wife have a son (3) and a daughter (2).

LARRY R. MARSHALL, AB, LL.B. '62, and his wife (CAMILLE HARRIS, AB '65) have moved to their new home at 422 Woodlawn Ave., Webster Groves, Mo. Larry recently became associated with the law firm of Fordyce, Mayne, Hartman, Renard & Stribling, St. Louis, and Camille is in the Broadcast Business Department of Gardner Advertising.

DAVID L. MORRIS, BJ, former vice-president of Richard C. Lynch Advertising Co., St. Louis, Mo., has been appointed advertising manager of the Jackson Brewing Co., New Orleans, La.

JON S. PADEN, BS Ed., MST '61, head of the science department and a teacher of physics in the Kamehameha Schools, Honolulu, Hawaii, attended a Chemistry Study Program under the National Science Foundation Association in Pittsburg, Kan., this summer. His wife is the former JULIA MARIE BEARY, BS Ed. They have a daughter, Laura Ann.

LEON F. WAHLBRINK, AB, has been appointed personnel director of ITT Aetna Finance Co., St. Louis, Mo.

ERNEST A. ITO, M.Ed., received the LL.B. degree from the University of Santa Clara (Calif.) in June.

GARY RAYMOND SPINDLER, BS Ed., was awarded the Master of Education degree at St. Louis University in June.

'59

JOHN L. AULVIN, AB, 1302 Cherry St., Mt. Carmel, Ill., has become a life member of the University Alumni Association.

GEORGE BOUCHER, BS Agr., is supervisor of Group Department for the Travelers Insurance Co., in Detroit, Mich. He and his wife (CAROLYN ROTH, Arts, Agric.) reside in St. Clair Shores with their daughter, Lisa Renée (3½).

A recent art show in Columbia (Mo.) featured works of two local artists, including Mrs. R. Lowell Bullard (LINDA LANHAM), Educ. A member of the Columbia Art League, she and her husband have two sons.

JOHN S. CHAMBERS, B&PA, Arts, a farmer and rancher at Canadian, Tex., is married and has three children: Rebecca (4), Sarah (3) and John Frank (2).



Leo Darga was cut out to work with wood .

Today he fashions tomorrow's cars.



The hands that hold the chisel are the hands that help shape the car. And exceptional hands they are. For they belong to Leo Darga, for 35 years with General Motors, and now a skilled wood craftsman and designer at the Fisher Body Central Engineering Plant in Warren, Michigan.

Leo is *really* a chip off the old block,

as his father was a woodworker for GM for some 30 years. In fact, as a young boy Leo became interested in working with wood by watching his father carve out his own pipes with knife and chisel. It naturally followed that young Darga showed an amazing aptitude and skill for wood shaping in manual training all through school.

Today, with all of his experience, Leo concentrates on the fine work—minute detailing of the dips, bends and flairs on the exteriors and interiors of Fisher Bodies in the initial stage of their development.

It's great to have the skill and artistry of men like Leo Darga working on the General Motors team.

General Motors is people making better things for you.



VIRGIL RONN FOSTER, BS BA, has resigned as chief cost accountant for the River Cement Co., St. Louis, Mo., to become accounting manager for the Sterling Division of the Federal-Mogul Corporation, also in St. Louis.

JOHN C. GINN, BJ, has joined the public relations staff of Celanese Corporation in New York. He had been city editor of the *Charlotte* (N. C.) *News* for the past three years.

PAUL H. RICHTER, BS BA, is a sales representative for Bostitch in Denver, Colo.

Mrs. Ronald C. Riggs (DIANNE SCHNORMEIER), BM, and her husband have returned to the States after three years on the overseas staff of the United Church of Christ in Syria. Both taught at Aleppo College in Aleppo. Mr. Riggs is enrolled at Eden Theological Seminary, Webster Groves, Mo., and Mrs. Riggs will serve as an organist in a church in the area.

RAY WALSH, M.Ed., D.Ed. '65, director of vocational and adult education at Hickman High School, Columbia, Mo., has been named dean of the Technical Education Division at Jefferson College, Hillsboro, Mo. He is married and has four children, ages 6 through 12.

'60

BILL R. APPLETON, BS, Kansas City, Kan., received the Ph.D. degree at Rutgers University in June.

WINFRED BLEVINS, AB, musician-writer, has received a two-year fellowship of \$5,000 per year for study at the University of Southern California. He will study at USC for a year; the second year he will be assigned to a metropolitan newspaper to work as a practicing music journalist under the guidance of a senior music editor. Blevins, who is working on his doctorate at Purdue University, is married to the former PATRICIA ANN ADAMS, AB.

MORTON R. ENGELBERG, Grad., has returned to Memphis, Tenn., from London, England, where he was on a public relations assignment for the MGM picture, "Dirty Dozen."

PAUL HOFFMAN, BS Agr., a service station dealer in Independence, Mo., has been elected president of the Mid-America Gasoline Dealers Association.

JAMES B. JUDD, BS BA, has been elected a member of the American Institute of Certified Public Accountants. He is associated with the St. Louis (Mo.) office of Peat, Marwick, Mitchell & Co., accounting firm.

Fr. DONALD KEMPER, AM, Ph.D. '63, director of the academic program at the Newman Center in Columbia, Mo.,

has been chosen as national chaplain of the Newman Association, which takes in the Newman Apostolate throughout the U.S. He will continue in his present position in Columbia and as an instructor of history at the University.

Hercules, Inc., has transferred PAUL B. KOCH, BS Agr., to its Oakbrook (Ill.) district office, where he will represent the firm's ag chemical products in four Midwestern states. He, his wife and son live in Wheaton, Ill.

Brother COLLYN MISSEY, AB, chairman of the religious department and director of student assistance at Holy Cross High School, San Antonio, Tex., was the recipient of the first award by the Fund for Judeo-Christian Studies. He used the first check from the fund to finance his summer studies at Hebrew University in Israel.

ROY W. RUPP, M.Ed., has been named superintendent of schools at Brookfield, Mo., where he had been high school principal.

HAROLD F. SCHULTE, BS CE, is director of campus development at Southwest Missouri State College, Springfield. He previously worked with the State Division of Planning and Construction in Jefferson City.

RONALD HUGH SCOTT, BS CE, received the Master of Business Administration degree at the University of Akron (Ohio) in June.

ARTHUR L. WALLHAUSEN, Jr., AB (WD), of Charleston, Mo., was one of four persons awarded "Outstanding Young Men of Missouri" (for 1965) plaques by the Jaycees of Missouri. Wallhausen, assistant editor of the *Enterprise-Courier*, is married and has a son, Art III (3½).

RICHARD D. SCHULTZ, M.D., has received a fellowship from the American Cancer Society for his fourth year of residency at the Jackson Memorial Hospital in Miami, Fla. He is married and has a son and a daughter.

PAUL CRAIG TODD, AB '57, M.D., has joined the Smith, Gary, Horner Clinic in Marceline, Mo. Following two years' service with the Air Force, Dr. Todd had practiced medicine in Carrollton and Brunswick, Mo., for the past three years. He and his wife (PAMELIA SMITH, Arts) have one son, Travis Kent (3).

'61

Recent additions to the list of life members of the University Alumni Association include: JOHN K. DAY, AB '57, M.D., Community Medical Center, Bowling Green, Mo.; GEORGE R. GAY, M.D., and his wife (ANNE COOPER,

AM), 1924 Sunset Dr., Springfield, Mo.; and JOSEPH H. JOHNS, LL.B., 225 S. Burlington Ave., Los Angeles, Calif.

Lt. GEORGE R. (Dick) ISELY, AB, and his wife (JUDY MILLER, AB '59) became parents of a son, Michael Christian, last May. The family lives in Brunswick, Maine, where Isely is a Navy pilot with Patrol Squadron Eleven.

Mrs. Cecil A. King (ZENA ALLSTRUN), BS Nur., received the Master of Science degree at Washington University, St. Louis, Mo., in June.

A daughter was born on June 1 to TOM O'CONNOR, BS ME, and his wife (JULIE ALLENTON, BS Ed. '60) in Kansas City, Kan.

GEORGE A. PATTON, BS CE, has left the California Department of Water Resources in Sacramento to become staff engineer for the Orange County Water District. He now lives in Tustin, Calif., with his wife, and two daughters, Susan (4½) and Lynne (1).

LARRY RALSTON, Arts, has been promoted to manager of the Customer Services Department for Smith Brothers Manufacturing Co., Carthage, Mo.

THOMAS E. REEVES, M.Ed., of Festus, Mo., has been appointed program director for the development phase of the Community Action Programs in three Missouri counties for the Human Resources Corporation.

ROY E. ROBINSON, BS Ed., and his wife (BARBARA GRANNEMAN, BS Ed.) live at Higginsville, Mo., where he is a claim adjuster for State Farm Insurance Companies.

DONALD R. SLATER, BS BA, a teacher and coach for New Franklin (Mo.) public schools, has resigned to become a representative for State Farm Insurance Companies. He and his wife (JUDITH HENDRIX, Educ. '58) have moved to 1233 3rd St., Boonville, Mo..

The Rev. DAVID R. WRIGHT, BJ, AM '62, has resigned as pastor of the New Salem Baptist Church, Ashland, Mo., to continue his seminary studies at Midwestern Baptist Theological Seminary, Kansas City, Mo. The Wrights have two sons, Douglas (4) and Daniel, four months old.

CARL W. YAGER, BS ME, has been elected Director-at-Large of the Missouri Society of Professional Engineers. He is project engineer for Line Construction Materials with A. B. Chance Co., Centralia, Mo.

ESTELLE R. ZELDIN, BS Ed., is a kindergarten teacher in Los Angeles, Calif.

JOHN W. ACUFF, BS BA, and his wife (DEE ANNA DANFORD, BS Ed. '60) have become life members of the

University Alumni Association. The Acuffs and their two children (Collin, 3, and Leigh Anna, ten months), recently moved to a new country home on R.R. #4, Lee's Summit, Mo. John is in residential construction and land development in Johnson County (Kan.) with PHIL R. ACUFF, BS BA '53. Phil's wife is the former GAIL VAN REEN, BS Ed. '55.

'62

ROGER BLACKWELL, BS BA, MS '63, an assistant professor of business organization at Ohio State University, Columbus, received the Ph.D. degree at Northwestern University in June. His wife (ANN NEWCOMER, M.Ed.), who also attended graduate school at NU, is a lecturer in business organization at Ohio State.

CHARLES BRAITHWAIT, M.Ed., Lowry City, Mo., is the Community Action Director for the West-Central Missouri Rural Development Corporation. He had been superintendent of schools at Lowry City the past two years. He is married and has two sons and a daughter.

Dr. JAMES H. BYLAND, Arts, is associated with his father in dental offices at 300 W. Reed St., Moberly, Mo. He and his wife have two sons, Douglas and Phillip.

JACKSON F. GARNER, M.Ed., vocal instructor at Fulton (Mo.) junior and senior high schools, was one of 36 persons to participate in the Institute for Advanced Study in Music Literature at Iowa University this summer.

GLENN ALLEN HARDY, BS BA, was awarded the Master of Business Administration degree in June at Washington University, St. Louis, Mo.

DAVID E. HUECKER, BS Agr., MS '63, newly appointed retail salesman for Gulf Oil Corporation, has been assigned to the staff of the Gulf Farm Center at Norfolk, Neb. He recently completed a training program with Gulf.

HAL L. JENKINS, BS Agr. '53, DVM, is a practicing veterinarian at Tempe, Ariz. He and his wife (CAROLYN VANDIVER, BS HE '54) have two children: Jeffrey (10) and Terry (7).

Lt. Col. WALTER F. JONES, BS Agr., is in Viet Nam as commander of the 145th Battalion. His wife lives in Alexandria, Va.

LELAND MAY, M.Ed., has resigned as pastor of the First Baptist Church at Seneca, Mo., to become an assistant professor of English at Southwest Baptist College, Bolivar, Mo. He and his wife have two sons, David and Jonathan.

TOMMIE MONKS, BS Agr., has been transferred from Kansas City to the Chi-

cago area by Swift & Co. He and his wife (ROYANNE DARBY, BS Ed.) live in Country Club Hills, Ill.

RONALD RICHARD PAUL, BS Ed., received the Master of Arts in Education degree at Washington University, St. Louis, Mo., in June.

PAUL J. SPEIDEL, BS EE, who joined the Foreign Service of the U.S. Information Agency in June, has been assigned to Tinang, The Philippines, as an electrical engineer with the Voice of America.

LESLIE SPENCE, BS CE, is an S-II project engineer with General Electric Co., at its Mississippi Test Facility at Slidell, La.

THOMAS R. TALBOT, Jr., BS IE, MBA '66, of Jefferson City, Mo., is training with IBM as a data processing salesman.

Mrs. PEGGY STONE THOMAS, M.Ed. '62, a member of the women's physical education faculty at Southwest Missouri State College, Springfield, is the recipient of a \$5,000 teaching fellowship for advanced graduate work at the University of Utah. She is teaching primarily in the area of gymnastics while earning credit toward a doctoral degree. Husband JOHN THOMAS, M. Ed. '64, is teaching in the Salt Lake City (Utah) school system this year. They have two daughters, Theresa (2) and Tammy (5).

KIRK ROSENHAN, BS ME, Department of Mechanical Engineering, Box 425, State College, Miss., has become a life member of the University Alumni Association.

'63

JOHN L. BENNER, BS BA, received the Master of Business Administration degree at Washington University, St. Louis, Mo., in June.

Lt. HAROLD W. BUREN, BS BA, a F-4C Phantom II pilot, has been awarded the Air Medal at Cam Ranh Bay AB, Viet Nam, for meritorious achievement during military flights.

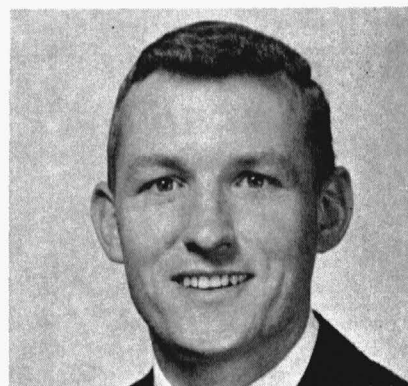
WILLIAM H. COFFEY, BS BA, is vice-president of sales for San Val Corporation, St. Louis, Mo.

EUGENE JAMES GIANLADIS, AB, received the Masters of Science (Research) degree at St. Louis University in June.

MORTON I. GOLDER, BS BA '60, LL.B., is an attorney for U.S. Army Aviation Materiel Command, St. Louis, Mo.

LARIAN AFTON JOHNSON, BS Ed., M.Ed. '64, Hillsboro, Mo., has become a life member of the University Alumni Association.

Lt. JERALD P. LANE, AB '59, M.D.,



Huecker, '62



Lane, '63

received the Army Commendation Medal for his achievements while assigned to Bangkok, Thailand, as Assistant Military Medical Officer, U.S. Mission Medical Unit.

JAMES W. LINEBERRY, BS Ed., has been promoted to Captain by the U.S. Army. He is stationed at Ft. Rucker, Ala., where he is undergoing pilot training.

FRANK W. MULLEN, BS BA, who is with the St. Louis (Mo.) office of Arthur Andersen & Co., accounting firm, has been elected a member of the American Institute of Certified Public Accountants.

Mrs. George M. Pary (ELIZABETH WALLHAUSEN), AB, will soon leave for Saigon, Viet Nam, to join her husband. He is project manager with Quinton Engineering Ltd., out of Los Angeles, in charge of installation of air fields for the armed services in that area.

BRUCE E. ROBERSON, AB, has been appointed brokerage consultant at the Kansas City (Mo.) brokerage office of Connecticut General Life Insurance Co.

RAY W. JOHNSON, AM, Ph.D. '66, is an assistant professor of psychology at North Texas State College at Denton.

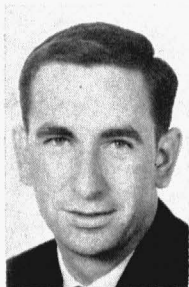
Mrs. Lee Schwartz (PATRICIA RAY), BS BA, is employed as a secretary in Irving, Tex.

MARY S. HAYNES, AB '61, LL.B., is an attorney with the Northern Trust Bank, Chicago, Ill.

MERRILL M. TOWNLEY, BS Agr. '60, DVM, and his wife (NORMA JEAN PARDUN, BS Ed. '59) became parents



Wiegand, '63



Floto, '64



Fredrickson, '63



Krumm, '65

of a son, Gregory Alan, on May 29. They live in Jefferson City, Mo.

WILLIAM R. WIEGAND, MS, has been appointed manager of the sales order service department at the A. E. Staley Manufacturing Co., Decatur, Ill. He had been inventory planning supervisor for the firm.

Lt. WAYDE T. FREDRICKSON, BS CE, has been awarded the silver pilot wings upon graduation at Laredo AFB, Tex. He has been assigned to Hahn AB, Germany, for flying duty with the Air Forces in Europe.

'64

JOSEPH BARBAY, BS EE, has returned to M.U. for graduate work after two years with Teletype Corporation in Skokie, Ill. His wife (SYLVIA RIEKHOF, BS Ed.) is elementary art supervisor at Fulton, Mo., where they make their home.

LARRY W. BLAYLOCK, BS EE, and his wife announce the birth of a daughter, Cynthia Kay, on March 19. Larry is employed at Convair in San Diego, Calif., and they live at Lemon Grove.

Pvt. JOSEPH I. CUPP, Arts, has completed a telephone switchboard operation course under the reserve enlistment program at the Army Southeastern Signal School, Ft. Gordon, Ga. He is scheduled to complete his military obligation with the National Guard unit in Chillicothe, Mo.

LOREN ROY FLOTO, BS For. *cum laude*, MS For. '65, is serving with the Peace Corps in the Dominican Republic.

STEPHEN FUNK, BS BA, has been promoted to executive account salesman and assistant to the regional manager in the Dallas (Tex.) regional office of Bobbie Brooks, sportswear and dress manufacturer. He had been assistant to the district manager of the firm's St. Louis office.

FRANK WAYNE HARRIS, BS, received the Master of Science degree from the University of Iowa in June.

CHARLES HARRISON, BS ME, is employed as an engineer with the Natural Gas Pipeline Company of America, Fritch, Tex.

SALLIE ANN HENDERSON, AB, St. Clair, Mo., received the M.L.S. degree from Rutgers University in June.

JAMES F. JOHNSON, BS For., who has been with the Missouri Conservation Commission since graduation, has been promoted to District Forester of the Sam A. Baker District in Southeast Missouri. He and his family live at Piedmont.

BERNICE LAMB, D. Ed., is an associate professor of education and director of the College Reading Clinic at Central Missouri State College, Warrensburg.

GEORGE L. MARR, Jr., AB, has been promoted to district manager for the Central Missouri area by the Dodge Division of Chrysler Motor Corporation. He and his wife (CAROL SHIPLEY, BS HE '63) live in Jefferson City.

NICKI NICHOLS, BS Ed., who received the Master's degree in teaching from Harvard University in June, is teaching in Great Neck, N. Y.

WALLACE McDONALD, Arts, Med., who received his M.D. degree from the University of Pennsylvania School of

Medicine in late May, is interning at San Francisco General Hospital.

PHILIP D. PRATHER III, BS BA, and his wife became parents of a second daughter, Emily Ann, on July 4, in Columbia, Mo. Lt. Prather is serving with the Army in Viet Nam.

KEN LAVENDER, BS Ed., has been appointed head football coach at St. Charles (Mo.) High School.

RANDOLPH K. ROLF, BS ME, MS '65 and his wife (SANDRA JOURNEY, AB '65) have been living in Shreveport, La., for the past year. Randy, who has been a petroleum engineer in the Production Department of Humble Oil and Refining Co., there, has reported to Ft. Sill, Okla., for basic training and later for Flight School. The Rolfs have two children, Kent (3) and Tracy Lynn (8 months old).

MARIE TAFT, AB, received the Master of Science degree in social administration from Western Reserve University in Cleveland (Ohio) in June. She is now employed with the California Department of Mental Health, doing psychiatric group work at Agnews State Hospital in San Jose.

'65

New life members of the University Alumni Association are: ARNO R. KRACHT, BS Ed., 9928 Bunker Hill, St. Louis, Mo.; DOLLIE J. FRITSCHKE, BS Ed., 2127 Crescent, St. Louis, Mo.; Lt. HARRY L. SHER, AB, and Mrs. Sher (ELIZABETH ANN WOODSUM, BS Ed.), 210 Gulf Towers Apts., 824 Central Beach Blvd., Biloxi, Miss.; and MARTIN L. O'DELL, BS Agr., 648 S. Kansas, Wichita, Kan., a sales trainee for John Deere Co.

WILLIAM D. BAKER, BS Ed., teaches social studies at Ritenour High School, Overland, Mo.

RONALD L. COLE, BS CE, MS CE '66, has joined the Enjay Chemical Company's Baytown (Tex.) Chemical Plant and is assigned to the Design and Drafting Section of the Technical Division. Mrs. Cole is the former SALLY POPE, Arts '66.

SANDRA JO CROW, BS HE, has been promoted to assistant buyer by Stix, Baer & Fuller, St. Louis department store.

PAUL W. DIECKMANN, BS Ed., AM '66, has joined the English faculty at Jefferson College, Hillsboro, Mo.

MIKE P. DIFFENDERFFER, Arts, Journ., has started work as civic affairs manager for the Springfield (Mo.) Chamber of Commerce. He had been employed at Lawson-Gibbs Abstract Co.

JUDITH W. EDDY, MS, is an instructor in the Home Economics Department of the University of Wyoming, Laramie.

Second Lt. LARRY LEE ROTTMANN, AB, who recently graduated among the top fourth in a class of 148 from the Army Officers Candidate School at Ft. Benning, Ga., is stationed at Ft. Belvoir, Va., with the Army Corps of Engineers. His wife is the former FRANCES ROSEN, BS Ed.

Three members of the class of 1965 who received a Master's degree in teaching from Harvard University in June are: JUNE JENNY, BS, who is working toward a Ph.D. at the University of Colorado, Boulder; KATHERINE ANNE KEITH, AB, BS *cum laude*, now teaching at George Mason Junior-Senior High School in Falls Church, Va.; and BENNETT TARLETON, AB (WH), who is teaching in Great Neck, N. Y.

Lt. ROGER P. KRUMM, J.D., was honored on the eve of his departure for Viet Nam when the Army Aviation Materiel Command in St. Louis, Mo., presented him with the Certificate of Achievement. Lt. Krumm now serves as purchasing officer of the 1st Logistical Command's Headquarters Detachment near Saigon. His wife is the former SHARON LEECH, BS Nur. '63.

PATRICK A. McINTYRE, AB, is in training for Management with Sears, Roebuck & Co., in Dallas, Tex. His wife is the former JILL D. METCALF, Educ.

JAMES B. ROUNER, MS, a bacteriologist, has been appointed to the staff of the microbiology department of Salsbury Laboratories, Charles City, Iowa.

Pvt. WILLIAM N. THOMPSON, Agric., is undergoing boot training at the Marine Corps Training Center in San Diego, Calif.

After spending five months touring Europe (including Hungary), DIANA I. TRAMPE, AB, returned to Los Angeles, Calif., where she joined Shelby American, Inc., as a press secretary. Diana has since been promoted to director of the Public Relations Department of the firm.

CAROL ANNE TURNER, AB, of Sedalia, Mo., received the M.L.S. degree from Rutgers University in June.

MARILYN J. WHITTAKER, BS Ed., who has been awarded a \$4,600 federal fellowship for prospective teachers of secondary English, will continue graduate work at M.U.

These classmates sent us news of themselves: DOUGLAS P. BAY, BS BA, and his wife (STEPHANIE TAYLOR, BS Ed. '66) became parents of a daughter, Andrea Lynne, on March 17; he is a staff accountant with Price Waterhouse & Co., in St. Louis, Mo. GORDON E.

CALAME, BM, M.Ed. '66, is instrumental music teacher at Bolivar, Mo. CAROLIN CHAPMAN, AB '64, BJ, is an editorial assistant for Science Research Associates Publishing Co., Chicago, Ill.

LANCE G. DeYOUNG, BS ME, who received his wings at Vance AFB, Okla., in June, has been reassigned to the 15th Tactical Fighter Wing, MacDill AFB, Fla., as a F-4C Phantom pilot. 2nd Lt. FORREST N. FREEMAN, Jr., BJ, a graduate of a weapons controller course at Tyndall AFB, Fla., is stationed at Eglin AFB, Fla. Mrs. SHIRLEY TURNER HEMMINGHAUS, BS *cum laude*, teaches at Mehlville (Mo.) Senior High School; she and her husband, ALLAN E. HEMMINGHAUS, BS Agr. E. '66, live at 1250 Quantock Dr., Mehlville.

LARRY H. NEBEL, BS EE, who was recently promoted to associate applications analyst with Control Data Corporation, has been assigned to the NASA Manned Space Craft Center, Houston, Tex. BOBBETTE K. RANNEY, AB, after completing her first year of medical school at Stanford University, spent the summer working in the physiology division of Research Laboratories at Fitzsimons Hospital in Denver. Mrs. JEAN PARKER SCOTT, BS Ed., and her husband, Ens. STEWART SCOTT, BJ '64, live in Virginia Beach, Va.; he is assistant supply officer aboard the *USS Shadwell*. COLEMAN WHEELER, BS Ed., M.Ed. '66, is an art instructor in the junior high school at Carlsbad, N. M.

Capt. JACK C. STEWART, BS Agr. *cum laude* '63, J.D., is an attorney with the Judge Advocate Branch of the Army, Presidio of San Francisco, Calif.; he and his wife became parents of a son, Nathan Baird, on October 27, 1965. DAVID J. TISHENDORF, BJ, is married and living in Omaha, Neb., where he is a reporter with the *Omaha World-Herald*. RUTH WAGEMANN, BS Nur., is an instructor in nursing in the outpatient department at Children's Mercy Hospital, Kansas City, Mo. JAMES K. WEIRICH, BS Ed., is a teacher at St. Thomas Aquinas High School, Florissant, Mo. JACK L. WHITACRE, AB '61, J.D., an attorney with the firm of Spencer, Fane, Britt and Browne, Kansas City, Mo., and his wife (MARIE C. GRUETZEMACHER, BS Ed. '62) live in Raytown, Mo.; they are the parents of a son, John Morgan. SHIRLEY ANN YUKOVICH, BS Ed., is an elementary teacher in Overland Park, Kan.

The list of life members in the University Alumni Association includes EDWARD D. NELSON, MBA, 161 Hickory St., Wood River, Ill.; ARVIE L. BAIE, BS Ed., and his wife (LINDA SUE JONES, BS Ed.), 619A Kuhlman

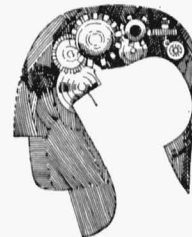
Court, Columbia, Mo.; Dr. J. D. VATER, BS Agr. '62, DVM, and Mrs. Vater (CAROL SUE WIDMER, BS Ed. '63), Brinkhaven Apt. 42, Madison, Tenn.; and JAMES J. RAU, BS BA, 1001 Pike St., St. Charles, Mo.

RONALD CLEMONS, AM, who teaches publications and journalism at Truman High School in Independence, Mo., is one of five in the U.S. to be awarded a Fellowship by the American Yearbook Co. He plans to do post-graduate work this summer at the University of Minnesota.

'66

Airman WILLIAM F. BISHOP, Jr., BS, is in training at Sheppard AFB, Tex., as an Air Force communications-wiring specialist. He recently completed basic training at Lackland AFB, Tex.

JANICE L. BOYCE, M.Ed., a teacher in the Auxvasse (Mo.) public schools, assisted the M.U. music department in the 13th annual Missouri All State High School Summer Camp held on the campus from June 19-24.



WHERE CAN MAN GO... IN R & D?

To distant planets, to land-vehicles of the 1970's, to a region far beyond the grasp of man today — the ocean bottom. Lockheed's major Research & Development programs reach from deepest space to the ocean deep. Engineers and Scientists interested in Lockheed's varied programs are invited to write K. R. Kiddoo, Professional Placement Manager, Sunnyvale, California. An equal opportunity employer.

LOCKHEED
MISSILES & SPACE COMPANY
A GROUP DIVISION OF LOCKHEED AIRCRAFT CORPORATION



Bishop, '66



Nagy, '66



Miss Volz, '66

JOE W. DAVIS, MS, is a psychiatric social worker in the child guidance clinic, Department of Psychiatry, University Medical Center, Columbia, Mo.

JAMES E. FRANKLIN, Engr., an assistant district engineer for the Missouri Public Service Co., is assigned to the district office at Lee's Summit, Mo.

STEPHEN E. GRANT, BS EE, his wife (SANDRA SWEARINGEN, H.Ec. '63) and son Darin have moved to Azusa, Calif., where Stephen is an associate engineer of the Oceanic Division of Aero-Jet General Corporation.

IRWIN L. GREENBERG, Ph.D., has been appointed assistant professor of Romance Languages and Literatures at the

University of Cincinnati's McMicken College of Arts and Sciences, Cincinnati, Ohio.

CHARLES W. HARRISON, MS, recently joined the Port Arthur (Tex.) Research Laboratories of Texaco's Research and Technical Department.

CHARLES HARTMANN, Jr., J.D., Interfraternity Council adviser and assistant director of student affairs for men at M.U., has resigned to become director of residences at Washington University, St. Louis, Mo.

JOHN C. KELLY, AB, serving in India with the Peace Corps, works in health and nutrition projects in the state of Madras.

FRANK G. MAYS II, BS BA, is a staff associate in the industrial relations organization at Western Electric's Hawthorne Works, Chicago, Ill.

JAMES P. MEYER, AB, is serving with the Peace Corps at Manta, Ecuador.

JOHN T. NAGY, BS EE, commissioned a second lieutenant upon graduation from OTS at Lackland AFB, Tex., has been assigned to Mather AFB, Calif., for navigator training.

OPAL OLSON, BS Ed., a 21-year veteran with the Missouri State Welfare Service, has been named district supervisor for eight Missouri counties. Miss Olson, who also attended M.U. in the 1940's, is headquartered in Maryville.

The EDWARD W. SOWERS (BJ '28) family of Rolla, Mo., had three representatives in the June Commencement at M.U. Degree candidates included two of his sons: STEPHEN E., AB '64, AM, and THOMAS S., BJ; and a daughter-in-law, SHERYL McCUBBINS (Mrs. Stephen Sowers), AB. Both sons have joined their parents in the family's publishing business, which includes the *Rolla Daily News* and the *Ft. Gateway Guide* at Waynesville.

Second Lt. TERRY V. TAYLOR, BS Ed., is on active duty with the Army at Fort Bliss, Tex.

ELIZABETH ANN VOLZ, H.Ec., who was awarded the silver wings of a stewardess after completing training at Fort Worth, Tex., has been assigned to flight duty out of Chicago, Ill.

WEDDINGS

'55

Irene Ritter and GENE SALLY, BS BA, on June 4, at Rolla, Mo., where they live at #5 Country Club Terrace.

'59

CAROL SCHEIDERER, BS Ed., and Dale Belshe, on June 25, in Salisbury, Mo. At home: 712 S. Walnut, Salisbury.

'60

MARY LEE STAPLETON, BS Ed., AM '63, and Dr. Bradford S. Field, Jr., on June 10, in Athens, Greece. At home in Oshkosh, Wis.

'61

Patricia Ann Foster and ED C. CHRISTOPHER, Agric., on May 28, in Sullivan, Mo. At home: Smith Apts., Bourbon, Mo.

Caroline June Chamberlin and LARRY LEE FOURSHA, Arts, on June 11, in Gordon, Neb. They live in Kansas City, Mo.

'62

Jane Carole Osiek, University student, and DON WILLIAM BRUNER, AB, on July 9, in Ladue, Mo. At home: 9 S. William St., Columbia, Mo.

ALEXANDRA JOY KENT, AB, and DAVID WOLFE WIGDOR, AB (WD), AM '63, on June 11, St. Louis County, Mo. At home: 100 Pannell St., Columbia, Mo.

Cherrie Land Hardison and HARRY NEAL MEANS, BS Ag.E., on April 16, in Marshall, Mo. At home: 513 Business Loop 63, N., Columbia, Mo.

'63

Susan Jordan and STEPHEN E. ATKINS, AB (WH), AM '64 (WH), on June 9, in Iowa City, Iowa, where they live at 1045 W. Benton.

SUSAN BOLSTAD, BMS, and John A. Hirner, on June 11, in Columbia, Mo.

Marie Ann Anderson and LARRY VAN ELLIS, Arts, on June 4, in Sedalia, Mo., where they live at 1626 S. Barrett.

DOROTHY HOLT, BS Ed., and John David Hinkle, on June 25, in Fulton, Mo. At home: Fairfax County, Va.

SUANNE McDANIEL, BS Ed. *cum laude*, and CHARLES E. COMFORT, BS EE '61, on June 18, in Columbia, Mo. They live in Kansas City, Mo.

Joyce Ann Oldham and WILLIAM H. MILLER, BS BA, on June 4, in Las Vegas, Nev. At home: 7344 El Domino, Apt. 2, Buena Park, Calif.

SHARON ANN NORRIS, AB, and William F. Noble, on May 14, in New York City.

Marjorie Chilton Harrison and ROGER LEE PROCTOR, AB, on June 18, in Nashville, Tenn. At home: 810 Jane's View, Apt. 16, Papillion, Neb.

Jill Susanne Altman and HARVEY OWEN RICH, MS, recently in San Francisco, Calif.

RUBY SULLENS, Grad., and Thomas Ray Balsley, on June 11, at Eugene, Mo. They live in Florissant, Mo.

CHRISTINE WONNEMAN, BS Ed., and DONALD RAY LEVI, BS Agr. *cum laude* '64, on July 19, in Columbia, Mo., where they live at 1000 Prospect.

'64

NORMA GAIL BENEDICT, BS Ed., and Robert E. McCubbin, University senior, on June 5, in Columbia, Mo., where they live at Southside Trailer Park.

BONNIE BRENNENSEN, BS Ed., and Herschel Turner, on June 3. At home in St. Louis, Mo.

Diana Sargent Hosley and CARL JOSEPH BURCHFIELD, Jr., Arts, on June 19, in Marblehead, Mass. At home: 194 Court St., Brooklyn, N. Y.

Pamela Jean Savage and DAVID LINN CARNEY, Arts, recently in Kennett, Mo. At home: 425 E. Grand, Springfield, Mo.

LINDA CARROLL NEUKOMM, BS Ed., and Curtis Ambrose Day, on June 25, in Montgomery City, Mo.

Carol Elisabeth Schmidt and JAMES WILLIAM NEWBOLD III, AB, on June 10, in St. Louis, Mo. At home in Columbia, Mo., where he is a law student at M.U.

MARTHA PROCTOR, BS Ed., and Frederick H. Carter, on June 18, in Tipton, Mo. At home: 9318 Bluejacket Lane #4, Overland Park, Kan.

Patricia Ann Nowicki and FELIX MONROE ROBBINS III, BS EE, on June 18, in Florissant, Mo. They live in Kansas City, Mo.

Dr. JO ELLYN WISHART, M.D., and Robert Dean Lins, University student in the School of Medicine, on June 11, at University City, Mo.

'65

Doris Taylor and JON ANCELL, BS CE, on June 11, in Glasgow, Mo. They live in Columbia, Mo.

DONNA SUE BARNES, BS Ed., and JAMES JOSEPH BOEHNER, Arts, on June 12, in Trenton, Mo. At home: 8817 Wayne, Kansas City, Mo.

ARTIE SUE BAUGH, BS Ed., and R. Blair Long, on July 1, in Hallsville, Mo.

JOYCE ARVEY BORGELT, BS Ed., and WILLIAM JOHN ZOLLMANN III, AB, on June 11, in Wentzville, Mo. At home: 705J University Village, Columbia, Mo.

JAMIE GAY CANFIELD, Educ., and William Earl Anderson, Jr., on May 29, in Rolla, Mo., where they live at 1610-D N. Rolla St.

ZOE MAXINE CHRISTIAN, AB, and RUSSELL KENNETH STOKES, Jr., AB, on June 26, in St. Louis, Mo.

Shannon M. Kusch and LANCE G. DeYOUNG, BS ME, on May 8. At home: 1617 S. Jefferson Ave., Enid, Okla.

JERE DOERSCHLEN, BS Ed., and William R. Leistritz, on June 25. At home: 440 S. Kirkwood Rd., St. Louis, Mo.

JEANNE LEA EVANS, Arts, Educ. '64, and JAMES ROBERT BEASLEY, BS CE, MS '66, on June 4, in Columbia, Mo. They live in Charleston, S. C.

MARY ANN FEARS, BS Ed., and L. E. (Jack) PARKS, BS Ed. '66, on Aug. 22, 1965. At home: Crestvale Trailer Park, Columbia, Mo.

DEBORAH BURD FRAZIER, BS Ed.,

and Dr. LOREN EUGENE GOLITZ, M.D. '66, on June 18, in Columbia, Mo. They live in San Francisco, Calif.

SUZANNE GILMORE, BS Ed., and JIM GREEN, BS Ed. '60, on June 11, in Sikeston, Mo. They live in Ferguson, Mo.

Jeanne Pfaff and WILLIAM G. HINK-EBEIN, BS Agr., on June 18, in Farmington, Mo. At home: 911 S. Main St., Windsor, Mo.

Deanna Lee Morris and JOHN RICHARD HOOVER, BS Ed., on May 21, at Purdin, Mo.

Nancy Lee Huechteman and DAVID NELSON KLEIBOEKER, BS Agr., on June 11, in Quincy, Ill., where they live at 4680 N. 24th.

Claire Reid Warren and GEORGE JEFFREY LOCKETT, AB, on June 18, in Lake Charles, La. They live in Columbia, where he is a law student at M.U.

Mary Ellen Moffatt and KENNETH BRYCE LOY, Educ., Arts, on Jan. 15, in Wentzville, Mo.

HOTEL CONTINENTAL

- Downtown—Heart of Theatre, Shopping and Business District. 10 Minutes from Airport or Railroad.
- 350 Air-Conditioned Rooms with Bath.
- Garage—24-hour Service.
- Home of the "Athletics" Major League Baseball and Starlight Theatre Productions.
- Finest facilities for CONVENTIONS, SALES MEETINGS and BANQUETS. Groups of all sizes. EXHIBITION HALL—10,500 sq. ft.



Year Around Swimming Pool, operated by K.C.A.C. and subject to it's rules.

Famous
PLAYBOY CLUB
on 22nd Floor.



and you'll enjoy

Le Chateau C DINING ROOM and COCKTAIL LOUNGE
Famous for Charcoal Broiled Steaks

THE HOTEL
Continental
KANSAS CITY Missouri
DIAL DIRECT—
Area 816, HA 1-6040
Baltimore at Eleventh Street

LINDA LOY, Arts, Educ., and Michael Joseph Neenan, M.U. student, on June 18, in Columbia, Mo.

MARGARET ANN McKERROW, BS Ed. '66, and ROBERT G. DYER, BS Ag.E., on June 12, in Chillicothe, Mo. At home: 1225 Quantock Dr., St. Louis, Mo.

Ruth Ann Niemeyer and ANTHONY MUDD, Engr., on June 18, in Hannibal, Mo.

LOUETTA MAY SCHNAKENBERG, BS Ed., and Edward Kent Kullmann, on June 4, at Cole Camp, Mo.

Miss Janek and WILLIAM R. SCHWARTZ, BS EE, on May 28, in Granite City, Ill.

SARABETH STEVENS, BS Nur., and J. William Moore, on June 11, in Phoenix, Ariz., where they live at 355 E. Thomas Rd.

RUTH ANNETTE WAGEMANN, BS Nur., and Dr. DANIEL JOSEPH MARTIN III, M.D. '66, on June 11, in Columbia, Mo.

MARGARET L. WILLIAMS, BS Ed., and RALPH A. LINGLE, Jr., BS EE, on June 11, in Webster Groves, Mo.

LINDA SUE MATHIS, BS Ed., and STEPHEN ELDRIDGE, BS Ed., on June 4, in Carrollton, Mo. At home: 300 Moss St., Columbia, Mo.

'66

Kathleen Klass and HAROLD F. ALBIN, Jr., BS Ed., on June 4, in Tipton, Mo.

WINONA AMBROSE, 2 yr. Cert. Sec. Prof., and Bob Dudley, on May 27, at Woodlandville Church near Columbia, Mo.

JUDITH AYERS, BJ, and KENNETH LAY, AB (WH) '64, AM '65, on June 18, in Jefferson City, Mo. They live in Houston, Tex.

SARA ELIZABETH BAKER, Nurs., and William Clark Ford, on June 11, in Rolla, Mo. At home in Springfield, Ill.

ANN BRANDON BODINE, BMS, and JAMES LEE BARRY, AB, on June 4, in Jefferson City, Mo. At home: 1027 South Park Dr., Columbia, Mo.

LOUISE BUCKNER, AB, and WILLIAM C. MORGAN, BS BA '62, J.D. '65, on Feb. 12, in Waynesville, Mo., where they live at 302 S. Benton.

VIRGINIA ELLEN DAMITZ, AB, and Dwayne Ralph Brees, University student, on June 12, in Cape Girardeau, Mo.

CHARLENE ROYE GEHRKE, Arts '65, and WATSON WADE DAVIS, Jr., BS EE, on June 25, in Lee's Summit, Mo. At home in Rockford, Ill.

DIANE LEE EDWARDS, BS Ed., and

Wendal H. Kerns, on May 27. At home in Avalon, Mo.

DELORES KAY SEBAUGH, Educ., and ROBERT GENE EISENHAEUER, BS Agr., on June 18, at Sedgewickville, Mo.

BARBARA JO FARR, BS Ed., and DAVID WILSON FULTON, BS ME '63, on July 9, in Kennett, Mo. At home: 4609B Cardinal Lane, Bridgeton, Mo.

BARBARA JEAN FENTON, BS Ed., and LEWIS MICHAEL BLANTON, J.D. '65, on July 9, in Florissant, Mo.

JUDITH ELLEN HAMMOND, BS Ed., and ROLPHE ELDRIDGE KIEHNE, M.Ed., on June 9, in Columbia, Mo.

HELEN FLENTGE, Arts, Educ., and JOHN LAWRENCE HECKEN, AM, on June 25, in Cape Girardeau, Mo. At home in San Antonio, Tex.

Sherryl Isenmann and DAVID HECKMAN, BS CE, on June 11, in Jasper, Mo.

MABLE KATHERINE PALMER, Agric. '60, and H. HENRY HEINZE, BS Ag.E., on June 25, in Columbia, Mo.

JUDITH ANN HICKEY, BS Ed., and EDWARD BARRY MANSUR, BS IE '64, on June 4, in Columbia, Mo. They live in Kansas City, Mo.

ELIZABETH JANE HARRIS, Arts, and BENJAMIN HAWKINS HICKMAN II, BS BA, on June 11, in Prairie Village, Kan.

MARY FRANCIS HIGHLEY, BS HE, and WILLIAM EDGAR BUCHANAN, Jr., Arts '65, on June 4, in Sweet Springs, Mo. They live at Claycomo, Mo.

Mary Ellen Martin and NORRIS LEE HILL, BS Agr., in June, at Clarksburg, Mo.

ANN HUNDLEY, AB '65, AM, and DAVID LEE PURVIS, AB, on June 9, in Columbia, Mo., where they live at 1702 University Ave.

Florene Ann Dunn and CHARLES ALAN KRIGEL, BS BA, on June 5, in Overland Park, Kan.

Peggy Anne Brandt and ROBERT MALONE LEE, J.D., on July 9, in Ft. Worth, Tex.

LINDA LENHERT, BS Ed., and LARRY SMITH, BS Ed., on June 11, in Odessa, Mo.

Judy Louisa Carter, University student, and MARK D. MEADOWS, AB, on June 6, in Columbia, Mo., where they make their home.

Rebecca Jo Desgranges and BILLEE CHARLES MILLIKAN, BS For., on June 25, in Poplar Bluff, Mo. At home in Linton, Ind.

Ruth Elaine Knipp and HARRY MONKS, Jr., Agric., on July 2, in Tipton, Mo. They live in Jefferson City, Mo.

PATRICIA ANN MOORE, BS Ed.,

and SIDNEY LEE PHILLIPS, Jr., BS BA, on June 11, in Brookfield, Mo.

JUDY PHILLIPS, AB, and JAMES OTIS JACKSON, BS CE, on June 4, in Camdenton, Mo. They live in Newport, R. I.

HARRIET ELIZABETH RATLIFF, H.Ec., and William D. McNeill, on June 12, in Columbia, Mo. They live in Estes Park, Colo.

CELIA COLE RENDEN, BS Ed., and JAMES HERSCHEL THOMAS, Jr., AB '65, on June 17, in Columbia, Mo. They live in Seattle, Wash.

ELIZABETH JANE RITTER, Arts, and John William Thompson, on June 11, in Monroe City, Mo., where they live at the Kendrick Trailer Court.

ANNE MICHELE ROSE, Arts, and Hans Juergen Pfeiffer, on June 20, in Colorado Springs, Colo.

JUDITH ANN ROSS, Educ., and William Fred Toops, on April 17, in Brookfield, Mo., where they live at 729 S. Monroe.

JAN MARIE SCHRIK, BS Ed., and NABIH R. ASSAL, Grad. '65, on June 4, in Columbia, Mo.

SHIRLEY JEAN SEMPLE, BS Ed., and LAWRENCE HOWARD CHETWOOD, MBA '65, on July 2, in Moberly, Mo.

MARGRET TERESA SHIELD, AB, and MORRIS DONALD MUNSEN, Jr., Arts '63, on June 26, in Clayton, Mo. They live in Adelphi, Md.

EVELYN VAN OSDOL, BS Ed., and WILLIAM LA VANDER EDMONDS III, AB, on June 11, in Kansas City, Mo.

Betty Hazlett and GARY L. WEED, Arts, on June 10, in Boonville, Mo. They live in New Franklin, Mo.

WANDA MARIE WESTRING, BS BA, and RICHARD ALAN WILEY, M.Ed., on June 18, in Kansas City, Mo.

DARLENE WIELIGMAN, BS Ed., and Glen Robinett, on July 9, in Independence, Mo. They live in Eldon, Mo.

MARTHA JEAN WILDFORSTER, Nurs., and Roger D. Hicks, on June 11, at Fort Leonard Wood, Mo. They live at West Point, N. Y.

PATSY WILLIAMS, Arts, Educ., and Steven L. Hardin, on June 11, in Fulton, Mo. They live at Ft. Bliss, Tex.

MARILYN JEAN PARRISH, Educ., and WILLIAM EDWARD WILLIS II, BS Agr., on June 19, in Paris, Mo. At home in Clinton, Mo.

NANCY WYETT, BS Nur., and RICHARD O. DEEM, BS BA, on July 2, in Ladue, Mo.

PENNY DALE HEPWORTH, H.Ec., and WILLIAM EDWARD YATES, Jr., BS BA, on June 18, in Callao, Mo.

DEATHS

WINTERTON C. CURTIS, on June 16, at age 90, in Columbia, Mo.; was a member of the University staff from 1901-1945 and was a nationally known zoologist; served as dean of the faculty of the College of Arts and Sciences from 1940 until his retirement in 1945; Curtis Hall, a genetics building at M.U., was named in his honor in 1946; at the time of his death he was working on a book concerning the famous Scopes trial at Dayton, Tenn., which he attended. Survived by a son, *W. D. Curtis*, AB '30, 5408 Moorland Lane, Bethesda, Md.

OLNEY BURRUS, Norm. Coll. '97, on May 20, at age 97, in Independence, Mo.; one of the best known attorneys of Eastern Jackson County (Mo.) for more than a half century; taught at rural schools and served as principal at Blue Springs (Mo.) before being admitted to the bar. Survived by two sons; three daughters, including *Helen*, BS Ed. '32, M.Ed. '41, 413 N. Liberty, and *Sybil* (Mrs. Floyd Snyder), BS Ed. '29, M.Ed. '32, 12219 Oak Ridge Rd., both of Independence; six grandchildren and five great-grandchildren.

EUGENIA FRANCES NOLEN, AB '01, on June 30, 1961, in St. Louis, Mo.

FRANK A. BERNSTORFF, AB '02, retired professor of German at Northwestern University, on April 7, at age 94, in Evanston, Ill. Survivors include his wife, of 1216 Judson Ave., Evanston.

Mrs. L. A. Weaver (SADIE GORDON), Arts '04, of Columbia, Mo., in 1965.

KATHERINE EDWARDS, AB '05, on June 17, in a Mexico (Mo.) hospital; a lifelong resident of Centralia (Mo.), she taught for several years at rural schools near there. Survivors include two sisters, *Rachel* (Mrs. Lawrence Davis), AB '08, AM '10, 302 E. Lakeview St., and *Eliza* (Mrs. Russell Catell), AB '04, 404 N. Rollins, both of Centralia.

LESLIE LAMAR UTTERBACK, LL.B. '07, on June 8, at a Moberly (Mo.) nursing home; a retired farmer and former presiding judge of Monroe County (Mo.), he had lived in Paris, Mo., 19 years. Survived by two sons, including *Manley*, BS Med. '40, 950 25th St., Ogden, Utah; one daughter; six grandchildren and one great-grandchild.

Mrs. EDITH ALLEN May, BS Ed. '09, AB '09, in February, 1962, in Oakland, Calif.

The Rev. C. E. BURGESS, AB '10, a retired minister, on July 13. Survivors include three daughters; seven grandchildren; five great-grandchildren; a brother, *William H.*, LL.B. '06, 1251 N.E. 27th Terr., Pompano Beach, Fla.; and a sister *Nellie* (Mrs. W. D. Boone), AB '11, 4212½ S. Zenith, Tulsa, Okla.

CHESTER MARTIN (C. E.) McWILLIAMS, BS Agr. '11, on May 28, in Jackson, Mo.; was the first agricultural agent in the U.S. to be appointed by the Department of Agriculture and his first assignment was Cape Girardeau County (Mo.) in 1912; later he moved to Illinois, where he farmed and also served as a farm adviser; opened the McWilliams Feed and Seed store in Jackson in 1936 and retired in 1953. Survivors include his wife (*Ruth Page*, Arts, Educ. '10), 1010 W. Main, Jackson; two stepsons; a sister; six brothers, including *Roy*, BS Agr. '21, Gallatin, Mo.; and seven grandchildren.

ETHEL MAY TAYLOR, Arts '11, in November, 1964, at Arlington, Va.

Mrs. Maxwell N. Beeler (MARY SPRINGER), BS Ed. '12, on April 14, in Topeka, Kan.

AMOS O. DURRETT, Sr., AM '32, on March 26, in Columbia, Mo.; taught and served in an administrative capacity in high schools at Lexington and Marshall, Mo.; served as admissions counselor at Missouri Valley College; was employed with MFA Insurance Companies in Columbia from 1952 until his retirement in late 1965. Survived by his wife (*Mildred Tandy*, BS Ed. '24), of 1215 E. Walnut St., Columbia; a son, *Amos O. Jr.*, BS BA '54, U.S. Federal Court House, 16th Floor, 911 Main, Kansas City, Mo.; a daughter, *Virginia* (Mrs. L. Stephen Otto), BS Ed. '59, 608 Pinellas Dr., St. Louis, Mo.; and two grandsons.

GEORGE RICHARD WADDELL, BS BA '32, on May 24, in Euclid, Ohio; was employed by the Armstrong Cork Co., for 32 years, and was an architect and building contractor consultant for the past 10 years. Survived by his wife, of 25550 Edgecliff, Euclid; and a brother, Lt. Col. *Charles C.*, BS BA '41.

WILLIAM RAY DeMOSS, AM '33, on Sept. 7, 1950, in Lexington, Ky.

HAROLD L. BEYNON, Arts, Law '33, on June 21, in Mexico, Mo.; was vice-president in charge of domestic and Canadian subsidiaries for the A. P. Green Refractories Co., there, and had received a 20-year service pin from the firm earlier this year; joined the Green Co., in 1946 after working for United Air Lines, Southern Air Lines, General Insulating and Manufacturing Co., and the National Gypsum Co.; served in the Army for

four years during World War II, attaining the rank of Lieutenant Colonel. Survived by his wife, of 11 Morningside Dr., Mexico; a daughter; and a son, and two grandchildren.

Dr. JOHN A. NORTON, AB '33, BS Med. '34, of Eldridge, Calif., on May 20.

Mrs. Harry W. Poush (CHRISTINE VIRGINIA BAKER), BS Ed. '34, on June 25, in a Kansas City (Mo.) hospital; early in her career, she taught art at Jasper (Mo.) schools, going to Grandview (Mo.) public schools in 1955; was a member of the AAUW, and the Missouri State Teachers and National Education associations. Survived by her husband, of 7611 130th Street Court, Grandview; two sons; her mother; a sister, *Margorie Baker* (Mrs. Earl Shoemaker), Arts '33, Box 123, Bentonville, Ark.; and a granddaughter.

ROBERT C. SMITH, Engr. '36, on March 15, 1962, in Buchanan, Va.

LEE C. FINE, Arts, Agric. '40, on July 16, in Jefferson City, Mo.; was Missouri State Park Director; entered state service in 1941 as district forester at Sullivan, Mo., serving later at Eminence, Camdenton, and Ellington; was assistant state forester when named park director last year. Survived by his wife and six children, of the home on Wardsville Rd., Jefferson City.

L. G. FITZWATER, Agric. '40, on May 23, in Rolla, Mo.; had worked for the Farmers Home Administration for 30 years, retiring 10 years ago because of ill health. Survived by his wife; three sons; one daughter; and two grandchildren.

LETA GERTRUDE MAHARG, M.Ed. '43, on July 16, in Fortuna, Mo.; taught for 15 years at M.U., and before that was with the Chillicothe (Mo.) school system. Survivors include two brothers and two sisters.

RAYMOND GLEN SIMPSON, M.Ed. '43, on March 12, 1965, at Brookfield, Mo.

WILLIAM F. ORNBURN, Grad. 1944-65, on June 5, at Moberly, Mo.; was director of elementary education in Moberly public schools and a former county superintendent of schools. Survivors include his wife, of 505 S. 4th St., Moberly.

LESLIE EDWARD HUEY, M.Ed. '46, on June 10, in Columbia, Mo.; had been connected with construction work there since retiring from a teaching career in 1950; had served as superintendent of schools at Shelbyville, Chula, Craig, New Haven and Lincoln, all in Missouri; was farm debt adjustment

supervisor for the Federal Government from 1934-37. Survived by his wife (*Beulah Hagerty*, BS Ed. '53), 110 Leslie Lane, Columbia; and two sons.

C. YANDALL HUNT, M.Ed. '59, of Peculiar, Mo., on June 17, in a Kansas City hospital; was superintendent of the recently reorganized Peculiar-Raymore school system near Kansas City, Mo., having previously served in the same capacity at Winona, Mo. Survived by his wife (*Mabel Lee*, BS Ed. '59) and a son, of the home at Peculiar.

JAMES G. OVERTON, AB '62, a senior in the University School of Medicine, on July 13, at Trenton, Mo.; had undergone experimental treatment for skin cancer, including a tumor transplant and laser beam treatments. Survived by his wife (*Sharon Beynon*, Arts, Educ. '66) and a six-months-old daughter; his parents; and a brother.

Cpl. ROBERT D. RICHARDSON, Educ. '63, on July 4, of wounds suffered in action in Viet Nam one day earlier; was a football star and president of the student body at Poplar Bluff (Mo.) High School. Survived by his wife; and his parents, Mr. and Mrs. Dale Richardson, Poplar Bluff.

LAWRENCE R. CHAPMAN, Engr., Educ. '66, of Pierce City, Mo., in an automobile crash on July 1, near Monett, Mo.

CLYDE HOMER FARIS, BS ME '05, of Roanoke, Va., on June 18, 1964.

PHILIP A. CONRATH, Arts '12, on June 12, in Kirkwood, Mo.; was emeritus associate professor of medical illustration at St. Louis University and former president of the Men's Garden Clubs of America; had served as a member of the Shaw's Garden Horticultural Council and as a fellow of the Royal Horticultural Society; was named a member of President Johnson's National Advisory Committee on Highway Beautification last year. Survived by a son.

CARL WILLIAM BOCK, AB '14, AM '15, a teacher, on March 20, 1965, in St. Louis, Mo.

ROGER BAILEY GALBRAITH, BS Agr. '14, on May 23, in Newport, Mo.; after farming for a year, he began teaching, and coaching football in Lubbock, Tex., and continued to teach and coach in various Texas towns until his retirement in 1958, when he returned to Missouri to live. Survived by his wife, of RR 1, Box 126, Washington, Mo.; a brother and a sister.

RICE L. PENDLETON, Arts '15, on June 2, in Richmond, Va.; a native of the Kansas City (Mo.) area, he was a

retired vice-president of the Travelers Insurance Co. Survived by his wife; a daughter; two brothers, including *Fleming W.*, LL.B. '15, 101 E. Ruby, Independence, Mo., and *Wiley*, Arts '19, Las Vegas, Nev.; and a sister.

Mrs. R. E. Hogan (HAZEL EVANS), BS Ed. '16, in July, 1964, at West Plains, Mo.

DAISY D. RANKIN, Educ. '16, on Jan. 20, in Great Neck, N. Y.

Mrs. A. E. Groff (MABEL CONLEY), BS Ed. '17, in late June in a Houston (Tex.) hospital. Survivors include her husband, of 417 Timberwilde, Houston; a son; a brother; and three grandchildren.

VIRGIL C. KLINE, BS Ed. '17, of Monroe, Conn., on May 24.

PAUL B. WITMER, AB '17, on April 13, 1962, in Santa Ana, Calif.

KENNETH M. THORPE, AB '18, on Sept. 27, 1961, in Kansas City, Mo.

WALTER SCOTT HILLYARD, Arts '19, on July 1, in St. Joseph, Mo.; was a retired executive of the Hillyard Chemical Co., and retired in 1965 as president of the Hillyard Sales Co. (Western). Survived by his wife and a son, of the home in St. Joseph; four daughters; and two brothers.

DUNCAN M. CUTHBERTSON, LL.B. '22, on June 22, in Fulton, Mo.; active in the practice of law, he served as prosecuting attorney of Callaway County (Mo.) from 1928-33, and was president of the Missouri State Association of Prosecuting Attorneys in 1929. Survived by his wife; two daughters, *Agnes Ann* (Mrs. Gladbach), AB '63, Little Rock, Ark., and *Mary Lou* (Mrs. R. W. Kincaid), BS HE '46, 40 S. Cody Court, Lakewood, Colo.; two sisters, including *Agnes* (Mrs. Leonard Ecker), BS Ed. '26, Collinsville, Ill., and seven grandchildren.

ALBERT LYMAN GUSTIN, Jr., Arts '25, on July 5, in Kansas City, Mo.; was a former president and chairman of the board of the Gustin-Bacon Manufacturing Co. there; was a member of the board of the Commerce Trust Co., and a former director of the Kansas City Life Insurance Co.; was active in the Charities campaign and his gifts to Mercy Hospital included \$75,000 to equip a cardiology diagnostic laboratory; he also gave \$75,000 for an 18-hole golf course named in his honor at the University of Missouri in 1957; was a former director of the Starlight Theater and a governor of the American Royal. Surviving are his wife, of 2840 Verona Rd., Shawnee Mission, Kan.; a son, *Albert L. III*, BS BA

'54, 829 W. 54th Terr., Kansas City, Mo.; a daughter, and two granddaughters.

ROBERT WALTER CROW, Grad. '28, on May 7, in St. Louis, Mo.; a teacher, he was active in school activities for many years. Survived by his wife; a son; a daughter; five grandchildren; and five great-grandchildren.

MILLARD M. HALTER, AM '26, on July 2, in St. Louis, Mo.; had been superintendent of schools in the Wellston (Mo.) school district since 1939; served there as athletic coach, science teacher and principal before being named superintendent; the new Wellston High School was named in his honor in 1961 in appreciation of his many years of service; active in many civic organizations, he received a community service award from the Chamber of Commerce in 1963. Surviving are his wife, of 1074 Roth Ave., University City, Mo., and a son.

JOHN H. SIMMONS, Arts '27, on Nov. 22, 1962, in Sedalia, Mo.

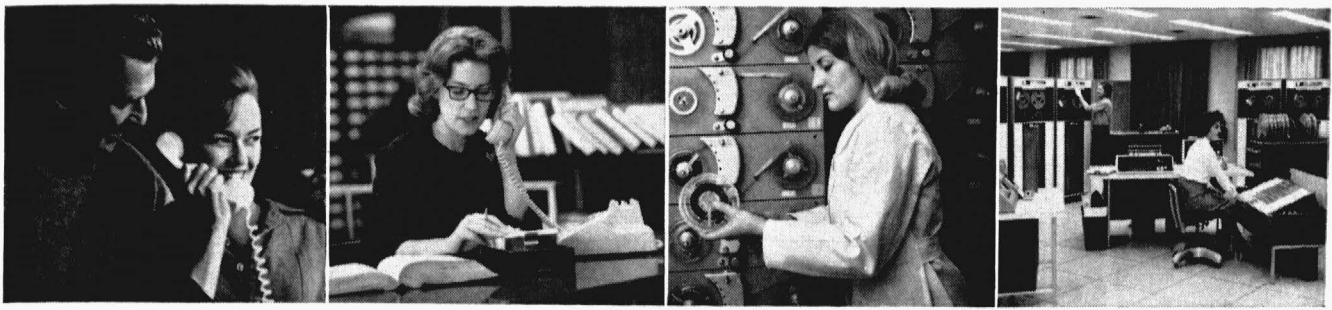
JOSEPH THOMAS CAPELLI, BS Engr. '30, on June 13, in Joplin, Mo.; a professional engineer, he retired from the Missouri State Highway Department in 1961; was admitted to the Missouri Bar in 1938, although he never practiced law; earlier in his career he was employed with the Federal Power Commission in Washington, D. C., and served in various agencies, including the Veterans Administration, and Department of the Navy. Survivors include a sister and a brother.

HOWARD R. HAND, Agric. '30, on May 12, in a Kansas City hospital; was owner of the H. R. Hand Insurance Agency in Nevada, Mo., and was also engaged in the raising of beef cattle. Survivors include his wife, of 1000 S. Spring, Nevada; two daughters; and six grandchildren.

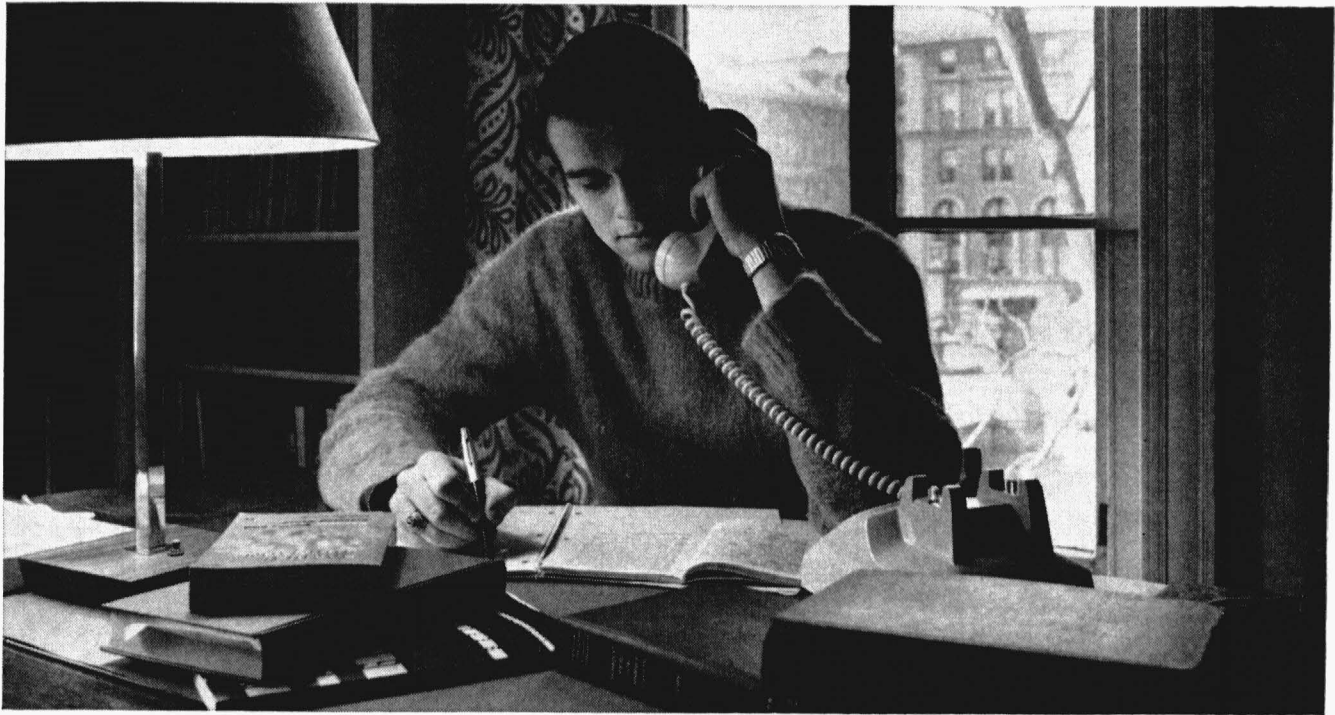
CLIFFORD V. HOWARD, BS Ed. '30, on June 8, in St. Joseph, Mo.; was principal of McKinley School there; began his teaching career at Butler, Mo., later going to Hamburg, Iowa; moved to St. Joseph in 1935, where he was associated with the junior high school and Lafayette High School before taking the post of principal. Survived by his wife (*Roberta Kinnison*, BS Ed. '30), 2810 Francis St., St. Joseph; a daughter; and three grandchildren.

JOHN M. HODGES, AM '31, on Oct. 29, 1962, in Wharton, Tex.

ELLA MAE JOHNSON, BS Ed. '31, on July 11, in St. Louis, Mo.; taught school there for 40 years, most recently at Maplewood (Mo.) High School. Survived by two sisters, including *Bernice I.*, BS Ed. '31, 7357 Gayola Pl., Maplewood.



The expanding universe of today's student. His phone gives him easy contact with family and access to information stored in libraries, learning labs and computers.



A new era opens in educational communications

This year dormitory rooms at hundreds of colleges will have their own telephones.

What's happening? A new era in college dormitory life? Yes indeed. Colleges are installing room phones to help today's serious student use his time more prudently . . . to talk with family, friends and others without standing in line at a public phone.

Colleges—and other institutions of learning, too—are facing up to the

twin explosions of population and information by looking more and more to communications. On many campuses, for example, the student will use his phone to "attend" language labs and to retrieve other information recorded on tape. More students than ever before will be able to share lab facilities.

Soon the telephone will be used to get information from computers or set up problems for solution. Some

colleges and high schools are already using teletypewriters for computer-assisted instruction.

Communications that make the fullest use of our educational resources are under continuing development by the Bell System. They are another way that we serve America's communications needs with imagination and economy . . . providing useful, dependable service of all kinds at low cost.

Specialist in Bengali Translation



By RUTH BEBERMEYER

MRS. MARY LAGO, University of Missouri instructor in English, is a translator of *The Housewarming and Other Selected Writings*, the first new collection of short stories by Rabindranath Tagore published in the United States in 40 years.

The book, translated in collaboration with Tarun Gupta, an alumnus of the University, and Amiya Chakravarty, distinguished Bengali poet, now a visiting professor at Smith College, and published by the New American Library, is now in circulation.

According to Mrs. Lago, Tagore is the most important Bengali poet of the 19th and 20th centuries. His subject matter includes narratives based on myth but the emphasis is on contemporary Bengali life. His works range from poems, novels, plays and short stories to songs.

MARY LAGO MIGHT WELL HAVE BEEN a musician; as it is, her interest in music has provided stimulation for her literary career. Her first connection with a published work in translation was assistance given in 1941 on completion of a classic in the field of music theory—the counterpoint treatise, *Gradus ad Parnassum*.

Introduced to Bengali literature by the songs of Rabindranath Tagore (she has an enviable collection of recordings), Mrs. Lago turned to a study of Tagore's works and is now working on her doctoral dissertation at the University of Missouri on Tagore's short stories. She learned both Tagore songs and the Bengali language from an Indian student, Tarun Gupta, who earned both Master of Arts and Master of Science degrees at the University of Missouri and is now associated with an advertising agency in Bombay. Mrs. Lago and Mr. Gupta have translated the first new collection of Tagore short stories published in the United States for many years.

Published by the New American Library, *The Housewarming* appeared late last year, as a paperbound Signet Classic. The stories, most of which had never been translated into English before, were chosen to display the astonishing range of Tagore's experimentation with the short story. Like Western literary experimenters

near the turn of the century, Tagore was already anticipating the modern short story.

Translation has its own unique difficulties. First, Mary Lago faced the formidable task of learning the Bengali language. Then there are always those phrases which defy the translator to find an equivalent expression in another language without losing the artistry of the original. Mrs. Lago remarks that "there are times when you just give up and push the whole thing into your desk drawer in despair . . . and then suddenly, later, the exact phrase you were looking for pops into your mind."

The Housewarming, which is but one item on Mrs. Lago's growing list of publications, has been favorably reviewed in several recent literary journals, among them a special issue of *Mahfil: A Quarterly of South Asian Literature* published at the University of Chicago, with assistance of a grant by Asia Society, New York. The same issue, subtitled "Tagore in the West," also includes a review by Mary Lago of a Tagore novel, *Binodini*, and an essay, also by Mrs. Lago, titled "The Parting of the Ways: A Comparative Study of Tagore and Yeats."

The June, 1966, issue of *Literature East and West* (the Journal of the Conference on Oriental-Western Literary Relations of the Modern Language Association of America) includes reviews of both *Housewarming* and of another of Mrs. Lago's and Mr. Gupta's translations—"Nine Poems of Jibananda Das," as well as Mrs. Lago's article, "Tagore's Temporal Encounters." The "Nine Poems" appeared last year in the *Beloit Poetry Journal*. An article about Das' work, co-authored by the translators, appeared in *The Journal of Asian Studies*.

This impressive catalog of publications really accounts for only a small part of Mary Lago's activity. In addition to working on her doctorate, she teaches a course in English literature at the University and assists with the Asian Studies program. She is married to Gladwyn V. Lago, a professor of electrical engineering at the University, and is the mother of two children. In her "spare time" she sings in the University's Collegium Musicum and has recently contributed an article about the Collegium's activities to the *American Choral Review*. Her plans for the future include a trip to India, where she will complete research for her dissertation.



Pay now, play later

You'll net more income from your 'Blue Chip' insurance

Ever see money work? Well, maybe you can't see it work, but in retirement you can enjoy the returns from its labor. Delightful experience.

Connecticut Mutual's retirement plans give decided 'Blue Chip' advantages. It will pay you to check the big differences: in benefits, in larger dividends to policyholders (continuous dividends for 120 years), in the wide variety of income plans available and especially in the size of those monthly retirement checks some day.

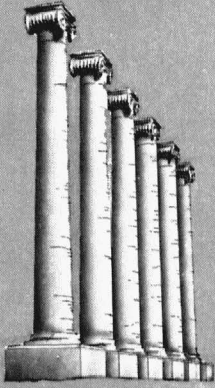
Our money works harder so you won't have to.

Your fellow alumni now with C.M.L.:

Donald D. Allen	'58 Ft. Worth
Alvin D. Cohen	'60 Kansas City
Robert L. Dale	'52 Atlanta
Paul J. McKee, CLU	'24 Kansas City
William E. Phifer, III, CLU	'55 Los Angeles

Connecticut Mutual Life

The 'Blue Chip' company that's low in cost, too.



UNIVERSITY OF MISSOURI ALUMNI ASSOCIATION, 308 Jesse Hall, Columbia, Missouri 65201

RETURN REQUESTED

