

KU Center for Technology Commercialization

“Promoting Innovation to Benefit Society”

**James Baxendale
Executive Director**

**Missouri Regional Life Sciences Summit
March 9, 2010**

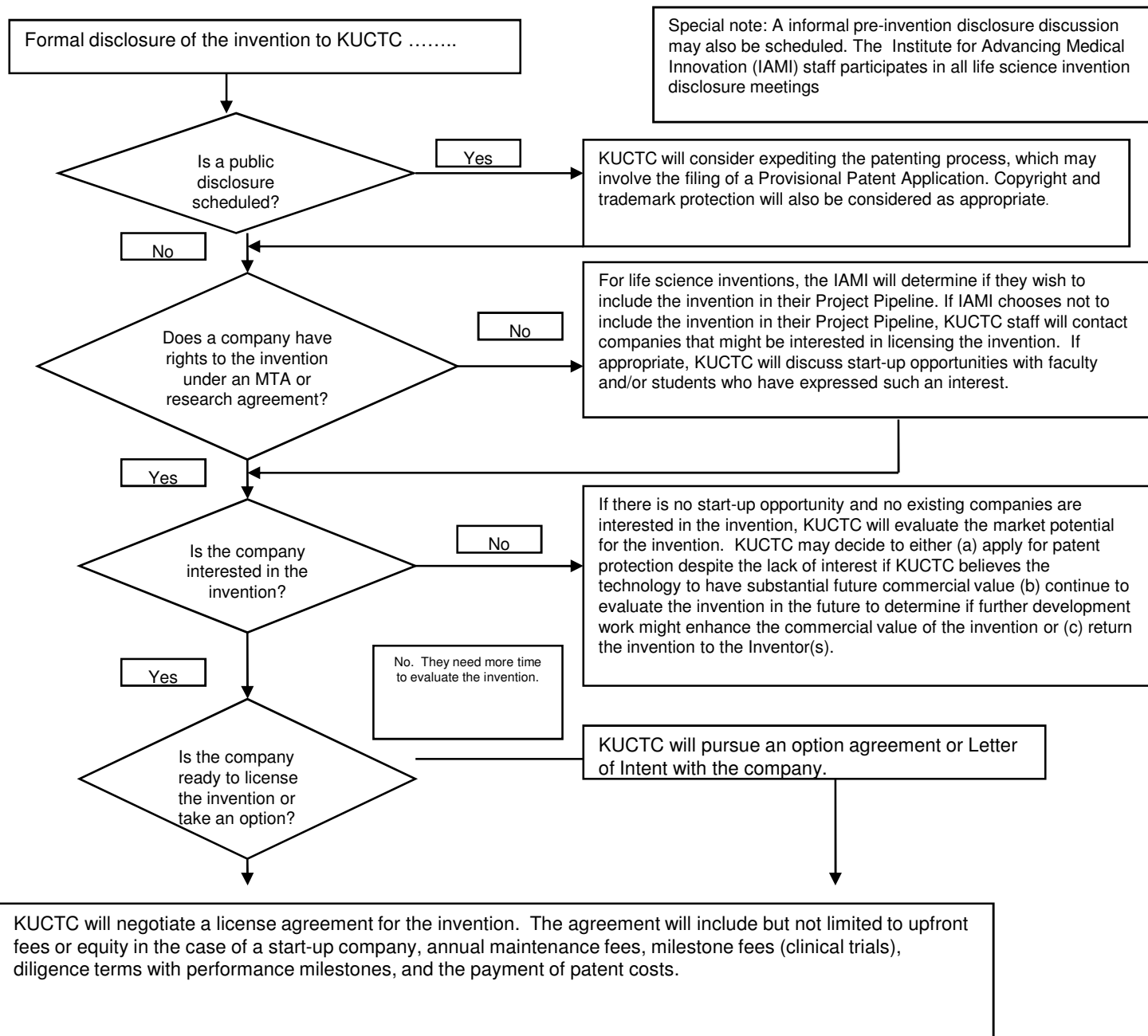
Sources of Faculty Inventions

- Colleague referrals to the Technology Transfer Office
- Publications
- Abstracts posted at a conference
- Industry sponsored research
- Conference presentations
- Grant submissions

Technology Commercialization Process

- Disclosure of invention
- Initial evaluation and market research
- Patentability Search
- Commercialization strategy
- File patent/copyright/trademark
- Potential enhancement of technology
- Material Transfer/Research Agreements
- Out licensing or Company spin-off

A Typical KUUCTC Invention Management Process



Special note: A informal pre-invention disclosure discussion may also be scheduled. The Institute for Advancing Medical Innovation (IAM) staff participates in all life science invention disclosure meetings

Technology Assessment

- Occurs at the time of –
 - » Invention disclosure
 - » Patent conversion
 - » USPTO Office Actions
 - » PCT filings
 - » Before returning to inventor
- Deal structures
- To secure potential licensees
- By whom-
 - » IAMI Board
 - » KU Alumni
 - » KU administration and faculty
 - » Regional and national entrepreneurs and executives

Marketing

- Faculty/Staff member is often a good resource
- Database searches, associations lists, conventions, publications and personal networking
- Non-confidential disclosures
- Confidential disclosures
- Corporate Partner for licensing and/or additional funding

University Patent Budgets

- How is the Tech Transfer Office funded?
- Expectations for the office, i.e., self-sustaining?
- Current status of licensing revenues, i.e. big hit or soon to expire patent
- Status of technology pipeline
- Does the TT office have an endowment?

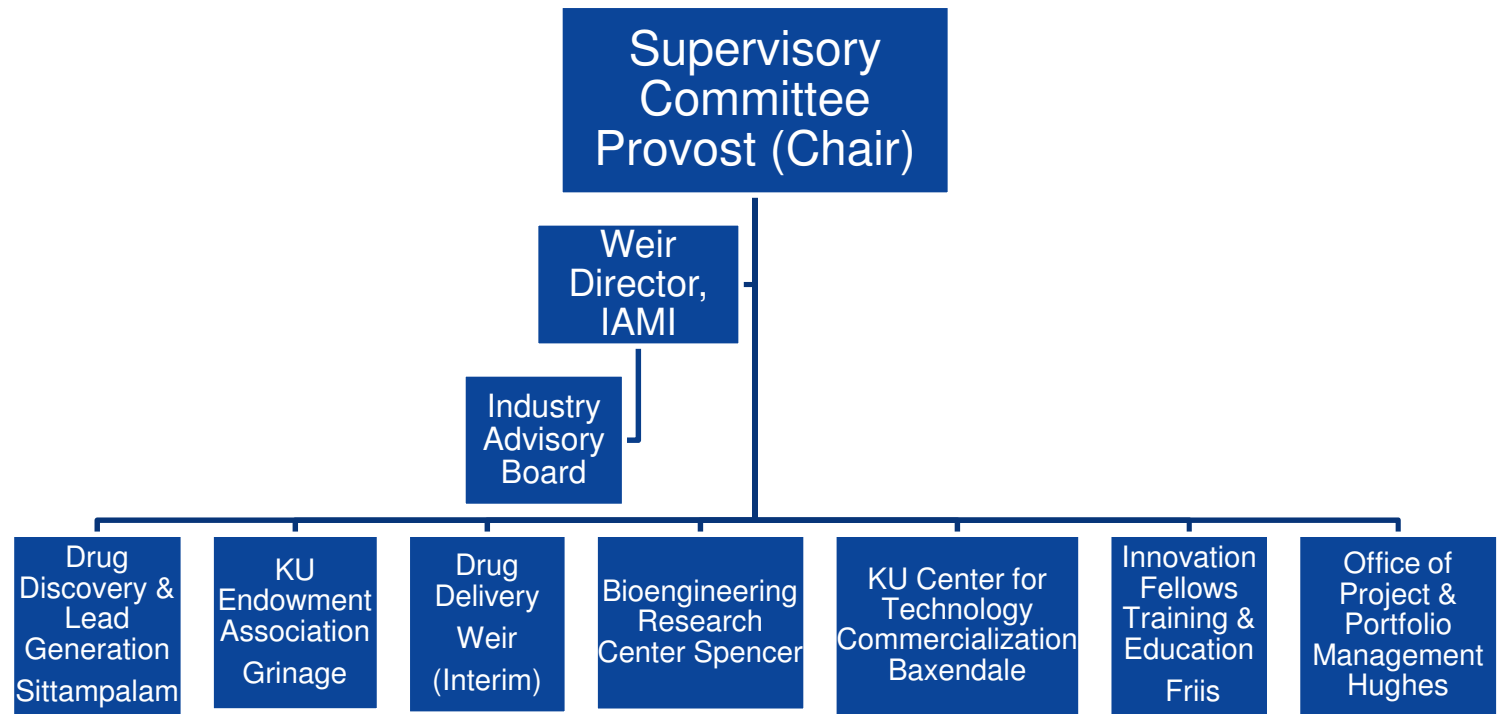
Patent Expenses

- Cover Sheet Provisional Patent Application-
~ \$1K
- Full Provisional Patent Application- ~ \$4 K
- NonProvisional Patent Application- ~ \$11 K
- PCT Patent Filing- ~ \$5 K
- National Phase Patent Filing- ~ \$5-10 K per country
- Office Actions- Variable cosst
- Restrictions (Divisionals)- results in a new patent

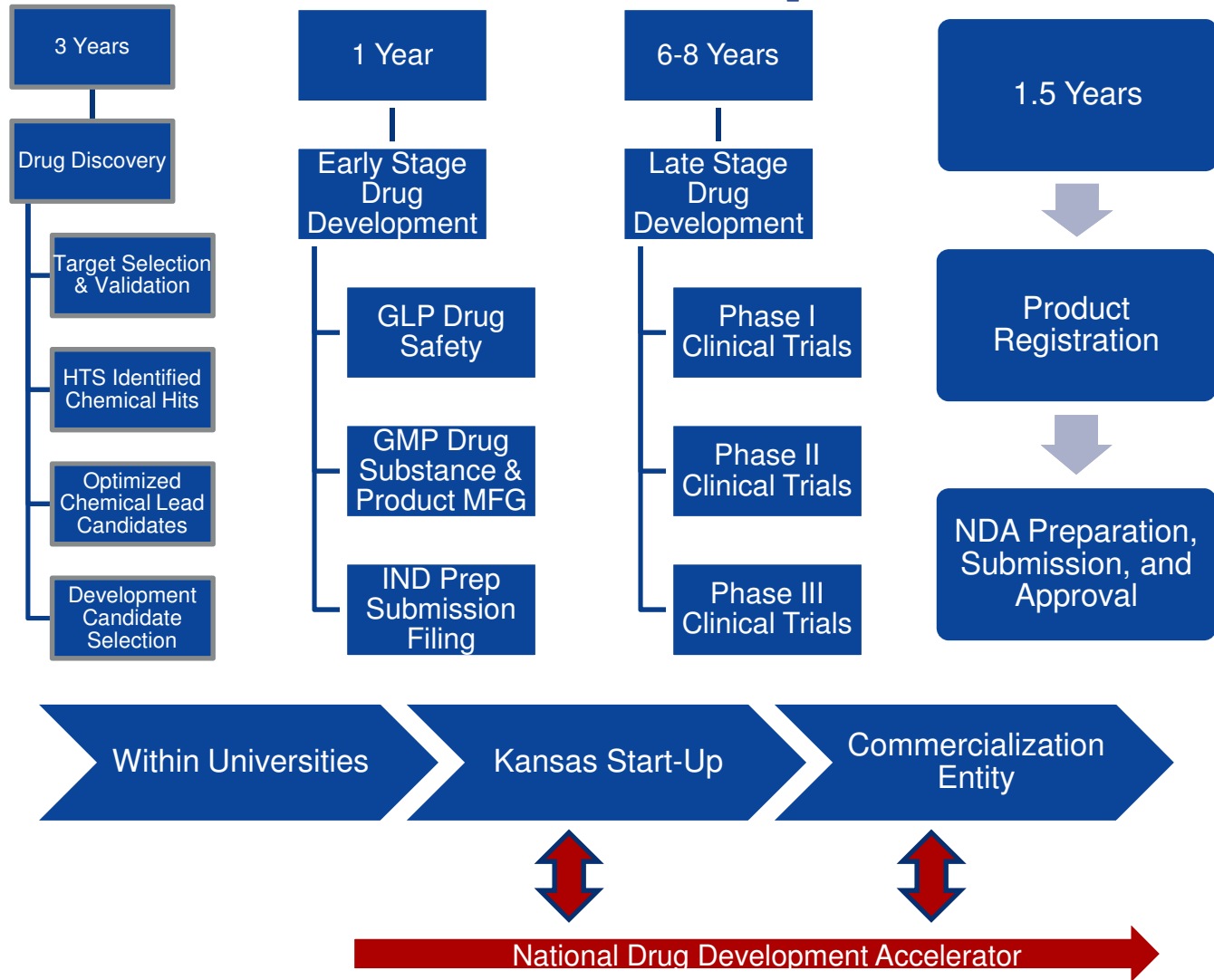
Patent Application Timing

- File Patent Application before public disclosure to preserve foreign rights
- Convert Provisional Patent Application to a NonProvisional Patent Application within 12 months of its filing
- File Patent Cooperation Treaty (PCT) 12 months from the first patent filing
- Patent will be published online 18 months from filing
- Select foreign countries 30 months from the first patent filing

IAMI Organization



Commercial Development



Integration with Technology Transfer

- Invention disclosure and patent activities integrated into drug project team activities managed by IAMI Project directors
 - » Technical evaluation of invention disclosure
 - » Go/no go decision points tied to patent investments
 - » “Pharma” profiling of intellectual property
 - » Seed funding decisions based on ROI
 - » Industry approach to laboratory documentation, central repository for data, standard format for commercial product summaries
- KUCTC full members on project teams, Target Prioritization Committee, and to-be-formed Pipeline Prioritization Committee
- Patent research to map IP landscape and guide or direct focused areas of research
- Move technology out of KU and into the hands of organizations who have the resources to advance technologies and products

KU Center for Technology Commercialization

“Promoting Innovation to Benefit Society”

<http://www.ctc.ku.edu>