

# CONTROLLING EXTERNAL PESTS OF LIVESTOCK

C. W. Wingo and V. F. Burk

Six common pests cost Missouri  
at least \$1,740,000 a year



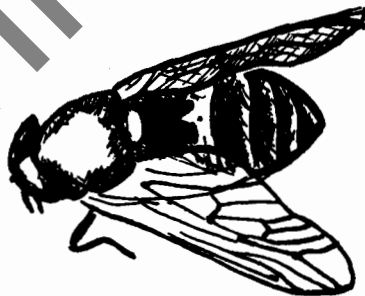
Flies on Cattle  
cost \$440,000



Lice cost  
\$120,000



Cattle grubs  
cost \$60,000



Horse flies  
cost \$1,000,000



Mites cost  
\$80,000



Ticks cost  
\$40,000

UNIVERSITY OF MISSOURI

COLLEGE OF AGRICULTURE

AGRICULTURAL EXTENSION SERVICE

# Controlling External Pests of Livestock

C. W. Wingo and V. F. Burk

Insect	Any One of These Insecticides	%	Solution	Lbs. per 100 gals.	Tablespoons per gal.	Remarks
<b>LICE</b>						
Dairy Cows . . . . .	Lindane	25% W	.03	1	1/3	Start treatment about Nov. 1. Repeat in 15 days. Thorough coverage most important.
	Methoxychlor	50% W	.5	8	3	
	Rotenone	5%	5% dust applied straight			
Other Cattle . . . . .	Lindane	25% W	.03	1	1/3	
	Toxaphene	40% W	.5	10	3	
	DDT	50% W	.5	8	3	
Hogs . . . . .	DDT	50% W	.5	8	3	
	Lindane	25% W	.05	1-3/8	1/2	
	Toxaphene	40% W	.2	4	2	
Sheep. . . . .	Toxaphene	40% W	.1	2	1-1/2	Dip or spray. This treatment will also control sheep tick.
	Lindane	25% W	.03	1	1/3	
Poultry. . . . .	DDT	10% dust				Pinch method on each bird.
	Nicotine Sulfate	40%				Paint on roosts, just before poultry goes to roost.
	Lindane	25% W	1.0	40	13	Paint on roosts like the nicotine.
<b>TICKS</b>						
Dairy Cows . . . . .	Lindane	25% W	.06	2	2/3	Sprayed twice 21 days apart is sufficient.
Other Cattle . . . . .	Toxaphene	40% W	.5	10	3	Dipping is most dependable.
	Lindane	25% W	.06	2	2/3	
Sheep. . . . .	Toxaphene	40% W	.1	2	1-1/2	Dip or spray about 4 weeks after shearing.
	Lindane	25% W	.03	1	1/3	
<b>FLIES</b>						
Dairy Cows . . . . .	Methoxychlor	50% W	.5	8	3	Only hydrocarbon spray approved.
Other Cattle . . . . .	DDT	50% W	.5	8	3	Repeat sprays every 21 days.
	Toxaphene	40% W	.5	10	3	
Milk Barns. . . . .	Lindane	25% W	.3	8	3	Keep feed and feed troughs covered while spraying.
	Methoxychlor	50% W	2.5	40	14	
<b>MANGE</b>						
Hog. . . . .	Lindane	25% W	.06	2	2/3	Do not use too freely on young pigs.
<b>HORSE FLIES</b>						
All Livestock . . . . .	Piperonyl Butoxide + Pyrethrum		Per Directions on Container			Effective for about 4 days only; expensive
<b>FLEAS</b>						
Barns . . . . .	DDT-Dust	10%				Dust or spray halls and dusty places in barns or sheds.
	DDT	50% W	2.5	40	14	
<b>GRUBS</b>						
Cattle . . . . .	Rotenone	5% (Derris or Cube)		7-1/2	3	Dust may be used--3 oz. per animal. 1 part rotenone to 2 parts sulfur.
<b>SCREW WORMS</b>						
All Livestock . . . . .	EQ 335 or Smear 62		Full Strength to Wound			Do not use over 2 or 3 teaspoons of EQ 335 around navel of young calves per application. Repeat 7 days.
<b>MITES-BEDBUGS</b>						
Poultry Houses . . . . .	DDT	5%	Oil Solution Full Strength			DDT in oil should never be used on animals.
	DDT	50% W	5.0	80	28	

## Suggestions or Precautions

1. Do not treat pigs under three weeks old with Lindane.
2. Treat sows for mange or lice 2 or 3 weeks before farrowing.
3. Repeat dosage in 2 weeks for cattle lice. Two quarts per animal of spray solution.
4. Complete coverage of the animal with spray is necessary in order to get good results.
5. Stress sanitation and prevention always.
6. Tablespoons, are all level full.
7. Methoxychlor is the only spray recommended for flies on dairy cows.
8. Use wettable powders only on livestock.
9. Wash thoroughly and change clothes after using insecticides.