



Published by the University of Missouri-Columbia  
Extension Division  
College of Home Economics

## Furniture and Equipment Cutouts: Living, Dining and Bedroom Areas

SCALE: 1/4" = 1'-0"

*Patricia Hilderbrand*

*Assistant Professor, Housing & Interior Design*

These home furnishings cutouts represent some of the sizes of furnishings and equipment that are used in homes today. When cut out and placed on a floor plan drawn to the same scale they can be helpful in planning furniture arrangements and determining sizes of furnishings needed. When working with furniture you already have it is preferable to measure those items and make appropriate cut outs.

For further information on using the cutouts, recommended clearances for residential space planning and how to draw a scale floor plan see UM extension guide "Space Planning With Furniture and Equipment Cutouts."

The following furniture and equipment cutouts are available:

1/4" Scale

Living, Dining and Bedroom Areas  
Kitchen, Bath and Laundry Areas

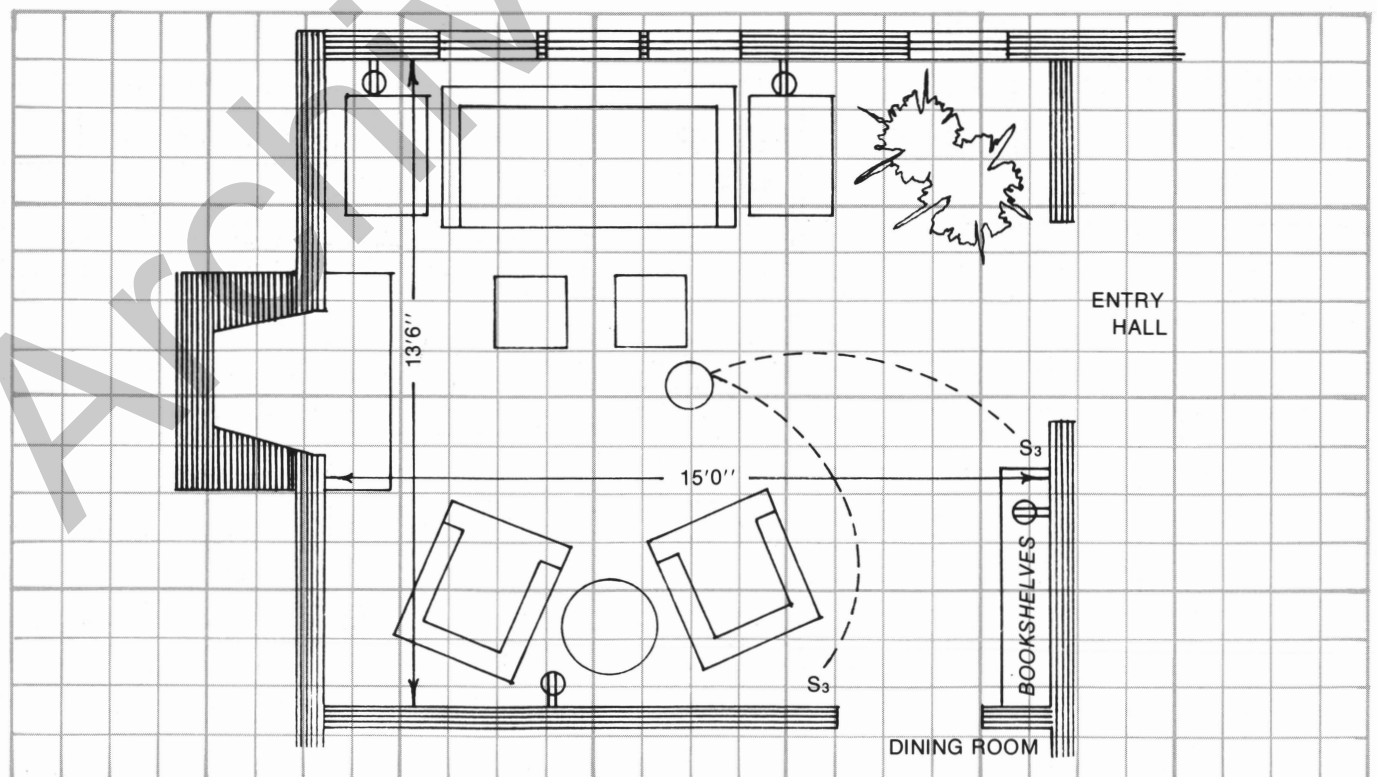
1/2" Scale

Living, Dining and Bedroom Areas  
Kitchen, Bath and Laundry Areas  
Kitchen Wall Elevation

(Convert to metric measurements by multiplying inches times 2.5 to get centimeters)

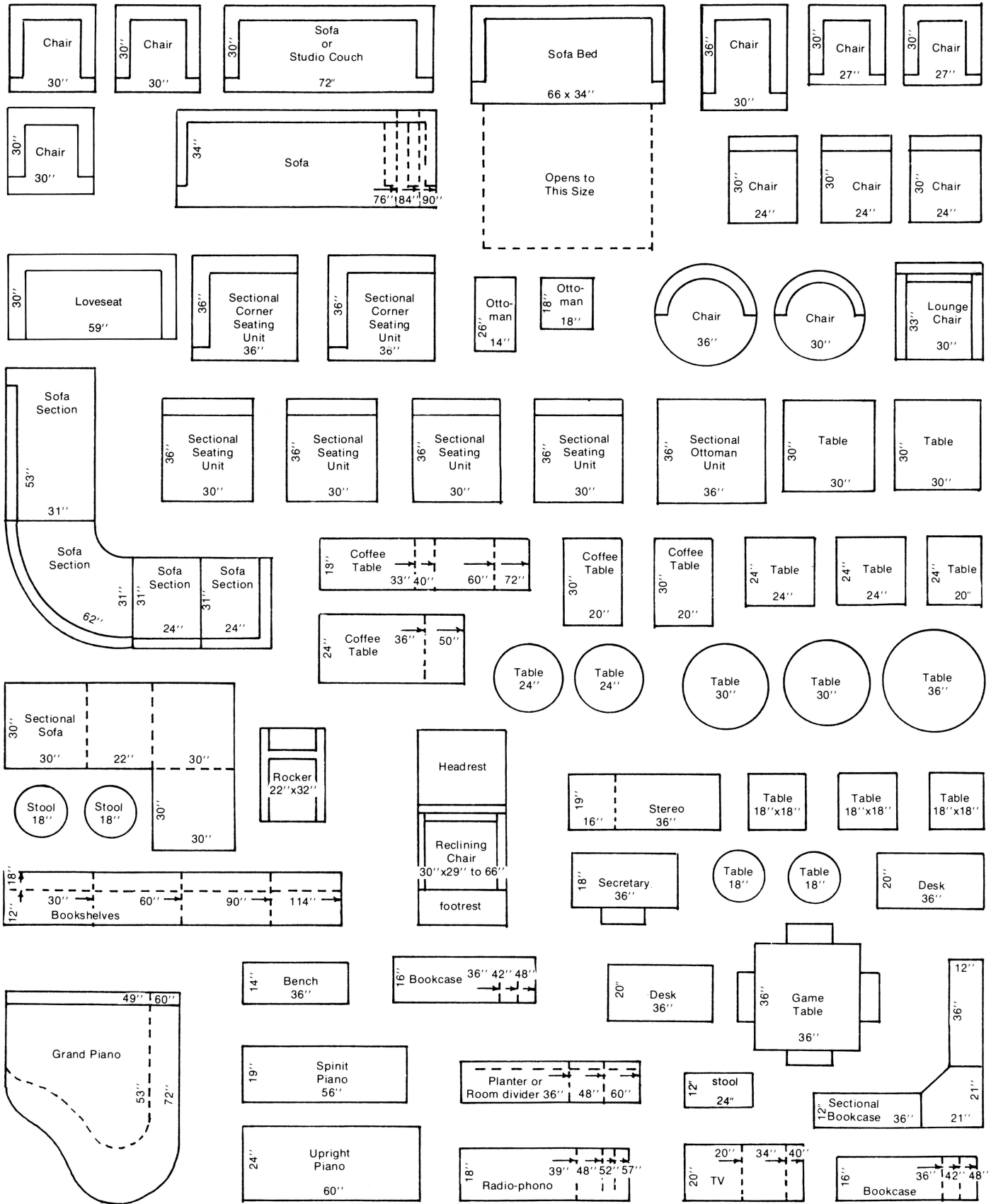
Example of a living room plan using cutouts.

**Example of a living room plan using cutouts**



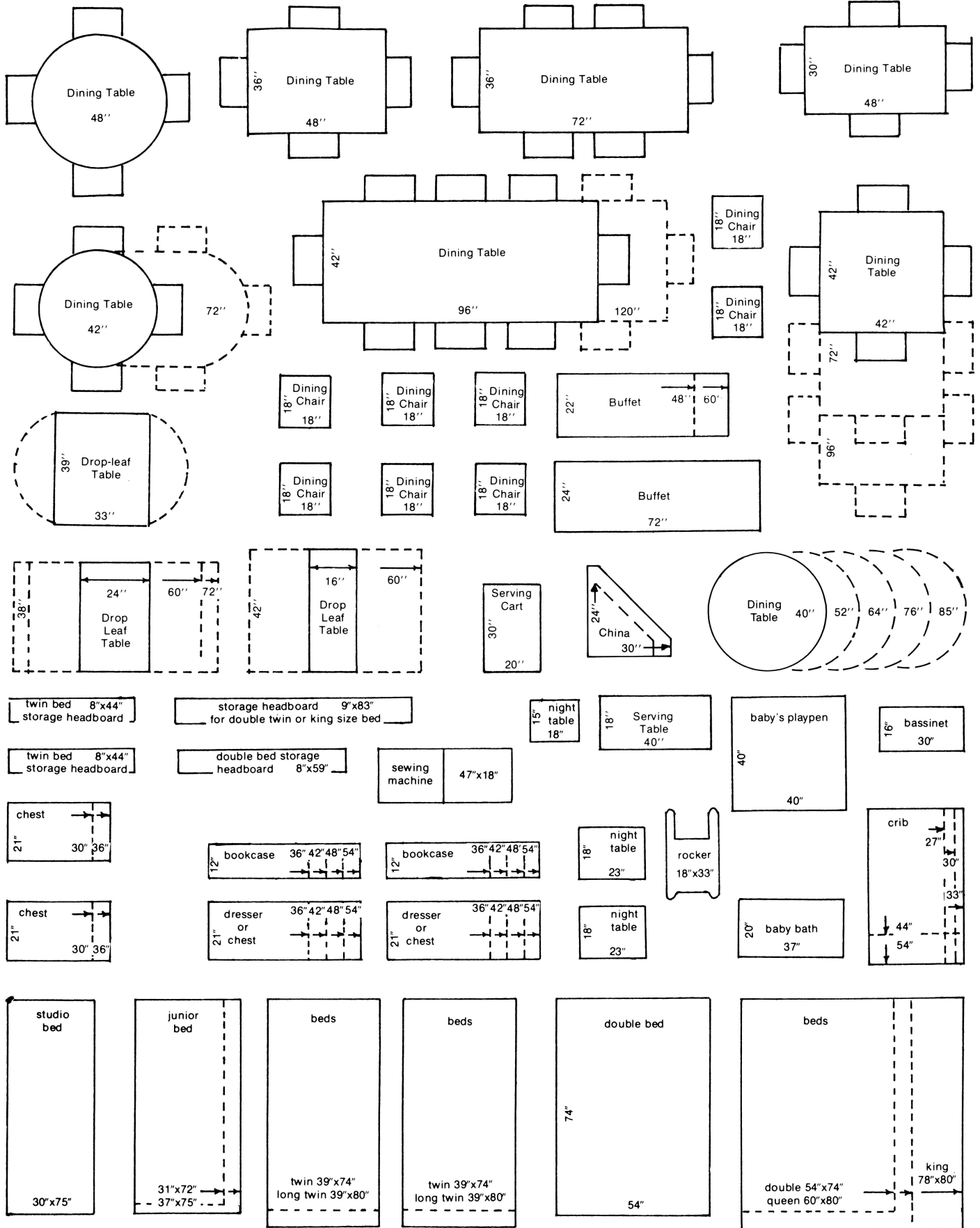
# Living and Family Area Cutouts

Scale 1/4" = 1'-0"



# Dining and Bedroom Area Cutouts

Scale 1/4" = 1'-0"



■ Issued in furtherance of Cooperative Extension Work Acts of May 8 and June 30, 1914 in cooperation with the United States Department of Agriculture. Leonard C. Douglas, Acting Director, Cooperative Extension Service, University of Missouri and Lincoln University, Columbia, Missouri 65211. ■ An equal opportunity institution.

*File: Housing 7/82/10M*