

MISSOURI
COOPERATIVE
EXTENSION
SERVICE
UNIVERSITY OF MISSOURI
& LINCOLN UNIVERSITY



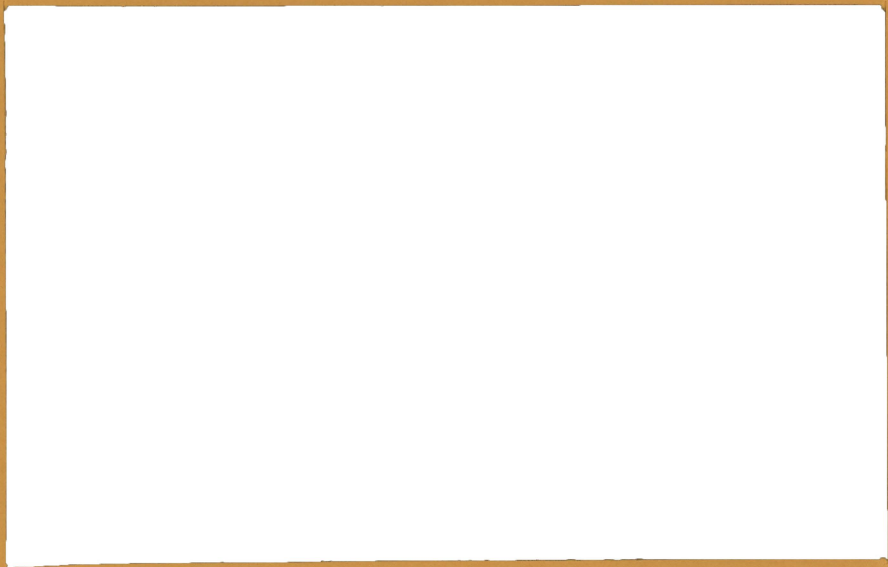
MAR 01 1985

1980 CENSUS BASICS

020

**OFFICE OF SOCIAL AND
ECONOMIC DATA ANALYSIS**

**8th Floor Clark Hall
Columbia, MO 65211
314/882-7396**



1980 CENSUS BASICS

020

1980 Census Basics

Subject Items Included in the 1980 Census

100-Percent Items

Population

Household relationship
Sex
Race
Age
Marital status
Spanish/Hispanic origin or descent

Housing

Number of units at address
Complete plumbing facilities
Number of rooms
Tenure (whether unit is owned or rented)
Condominium identification
Value of home (owner-occupied units and condominiums)
Contract rent (renter-occupied units)
Vacant for rent, for sale, etc.; and period of vacancy

Sample Items*

Population

School enrollment
Educational attainment
State or foreign country of birth
Citizenship and year of immigration
Current language and English proficiency
Ancestry
Place of residence five years ago
Activity five years ago
Veteran status and period of service
Presence of disability or handicap
Children ever born
Marital history
Employment status last week
Hours worked last week
Place of work
Travel time to work
Means of transportation to work
Number of persons in carpool
Year last worked
Industry
Occupation
Type of employment
Number of weeks worked in 1979
Usual hours worked per week in 1979
Number of weeks looking for work in 1979
Amount of income in 1979 by source

Housing

Type of unit and units in structure
Stories in building and presence of elevator
Year built
Year moved into this house
Acreage and crop sales
Source of water
Sewage disposal
Heating equipment
Fuels used for house heating, water heating, and cooking
Costs of utilities and fuels
Complete kitchen facilities
Number of bedrooms
Number of bathrooms
Telephone
Air conditioning
Number of automobiles
Number of light trucks and vans
Homeowner shelter costs for mortgage, real estate taxes, and hazard insurance

*To meet the aim of greater statistical reliability for small areas, there will be a 50% sample for governmental jurisdictions with a population of less than 2,500. The sample will be one-in-six (16.7%) in areas with a population of 2,500 or more, yielding a National sample rate of 19.7%.

Major Report Series from the 1980 Census

Population

- Series PC(1)-A**
(One per State) **Number of Inhabitants.** Final official population counts are presented for States, counties, SMSA's, urbanized areas, minor civil divisions, census county divisions, all incorporated places, and census designated places of 1,000 inhabitants or more.
- Series PC(1)-B**
(One per State) **General Population Characteristics.** Statistics on age, sex, race, marital status, Spanish/Hispanic origin, and household relationships are presented for States, counties, SMSA's, urbanized areas, minor civil divisions, census county divisions, Indian reservations, and places of 1,000 inhabitants or more.
- Series PC(1)-C**
(One per State) **General Social and Economic Characteristics.** These reports focus on population items collected on a sample basis. Each subject is shown for the following areas: States, counties, SMSA's, urbanized areas, and places of 2,500 inhabitants or more.
- Series PC(1)-D**
(One per State) **Detailed Characteristics.** These reports cover most of the population subjects collected on a sample basis, presenting the data in considerable detail and cross-classified by age, race, and other characteristics. Each subject is shown for the following areas: States (by urban, rural-nonfarm, and rural-farm residence), large SMSA's, and large cities.

Housing

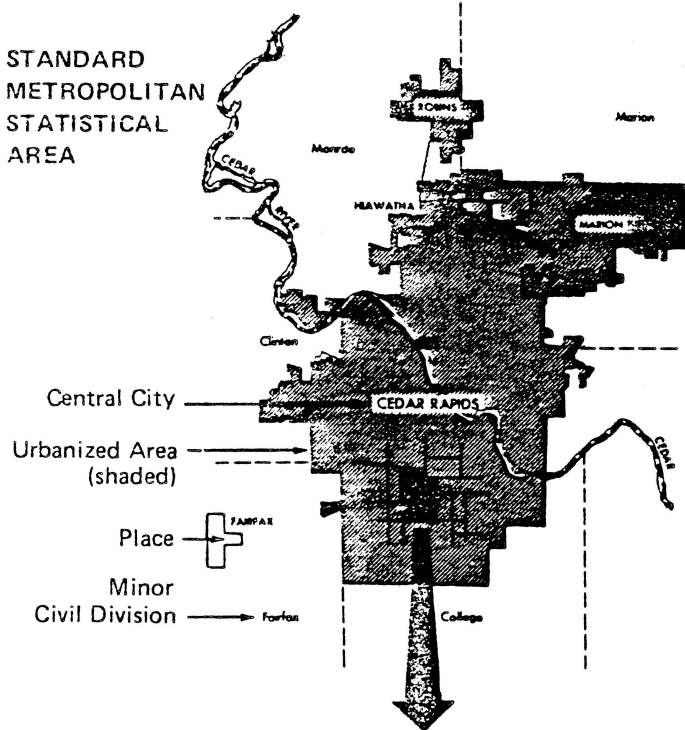
- Series HC(1)-A**
(One per State) **General Housing Characteristics.** Statistics on 100-percent housing items are presented for States, counties, SMSA's, urbanized areas, minor civil divisions, census county divisions, Indian reservations, and places of 1,000 inhabitants or more.
- Series HC(1)-B**
(One per State) **Detailed Housing Characteristics.** These reports focus on the housing items collected on a sample basis. Each subject is shown for the following areas: States, counties, SMSA's, urbanized areas, and places of 2,500 inhabitants or more.

Population & Housing

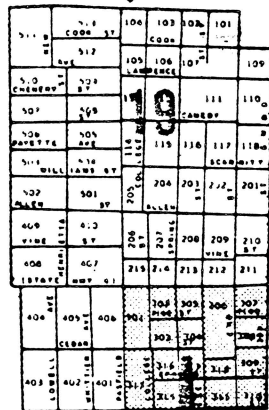
- Series PHC(1)**
(One per SMSA
and one for
each State) **Block Statistics.** Reports show data for individual blocks on selected 100-percent population and housing items. The series includes one report for each SMSA (presenting block statistics for the urbanized area, places of 10,000 inhabitants or more, and smaller communities which contracted with the Census Bureau to provide block statistics) and a "balance of State" report for each State (presenting block statistics for places of 10,000 inhabitants outside of SMSA's or more and smaller communities which contracted with the Census Bureau to provide block statistics).
- Series PHC(2)**
(One per SMSA
and one for
each State) **Census Tracts.** Reports present selected population and housing items (100-percent and sample) for individual census tracts. The series includes one report for each SMSA and a "balance of State" report for those tracted areas outside of SMSA's.
- Series PHC(3)**
(One per State) **Summary Characteristics for Governmental Units.** Reports present selected population and housing items (100-percent and sample) for counties, incorporated places, and "active" MCD's qualifying for revenue sharing purposes.

1980 Census Geography

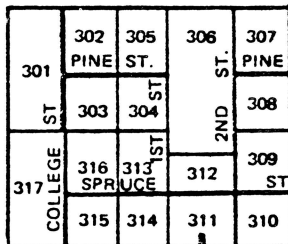
STANDARD METROPOLITAN STATISTICAL AREA



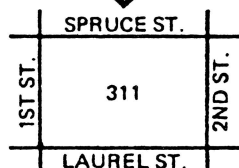
CENSUS TRACT



BLOCK GROUP



BLOCK



Governmental areas include: States, U.S. Congressional Districts, counties, minor civil divisions, and incorporated places (cities, villages, etc.).

Statistical areas include:

Standard Metropolitan Statistical Areas (SMSA)—As a rule consist of a city of 50,000 inhabitants or more together with the county or counties in which it is located. Contiguous counties are included in an SMSA if they are metropolitan in character and are socially and economically integrated with the central county. A county containing a city of 25,000 to 50,000 population may constitute an SMSA if the addition of densely settled adjacent places would bring the city up to the 50,000 level and the SMSA has a population of at least 75,000.

Urbanized Areas (UA)—Defined by population density, they comprise the central city of an SMSA plus the surrounding closely settled urban fringe (suburbs).

Census County Divisions (CCD)—For data reporting purposes, CCD's take the place of minor civil divisions (MCD) in States where MCD's are not adequately defined.

Census Designated Places (CDP)—A concentration of population, with a definite residential nucleus, which is not legally incorporated.

Census Tracts—Statistical subdivisions of SMSA's, each tract averages 4,000 inhabitants. Defined by local committees, tracts are frequently used to approximate neighborhoods.

Enumeration Districts (ED)—Administrative areas set up by the Census Bureau for census collection purposes, also used as tabulation areas. Each averages about 800 inhabitants.

Block Groups (BG)—Groups of city blocks, averaging 1,000 population, are used in place of ED's in areas where block statistics are tabulated.

Blocks—The smallest type of census geographic area, they average 100 people and are bounded by four streets or some other physical feature. They are used as tabulation areas in UA's, places of 10,000 population or more, and some additional areas.

Major 1980 Census Summary Tape Files (STF)

STF	Tabulation Areas	Data Items	1970 Comparability
1	Blocks, ED's/BG's, census tracts, places, MCD's/CCD's, counties, U.S. Congressional Districts, States	Basic tabulations of 100% population and housing items (age, sex, tenure, etc.)	1st & 3rd counts
2	Census tracts, places (1,000 or more inhabitants), MCD's/CCD's, counties, SMSA's, States	Detailed tabulations of 100% data (age, sex, tenure, etc.). Separate summaries by selected race categories and Spanish/Hispanic origin.	2nd count
3	ED's/BG's, census tracts, MCD's/CCD's, places, counties, ZIP Code areas, States	Basic tabulations of sample items (income, education, etc.) in combination with selected 100% items (age, race, etc.)	5th count
4	Census tracts, places (1,000 or more inhabitants), MCD's/CCD's, counties, SMSA's, States	Detailed tabulations of sample items (income, education, etc.) in combination with selected 100% items (age, race, etc.). Separate summaries by selected race categories and Spanish/Hispanic origin.	4th count
5	States, SMSA's, large counties and cities	More detailed tabulations of sample items (income, education, etc.) in combination with selected 100% items (age, race, etc.)	6th count

Other 1980 Census Computer Files

Master Area Reference File (MARF)—Contains numeric codes and names (where appropriate) of geographic areas, and population and housing counts for all geographic areas in the 1980 census.

"Special Population Summary Prepared in Accordance with Public Law 94-171"—Contains total population, race, and Spanish/Hispanic origin counts for all geographic areas in the 1980 census. Used for legislative reapportionment/redistricting purposes.

GBF/DIME Files—Computerized versions of the Metropolitan Map Series. Available for the urbanized portions of SMSA's. Used to assign census geographic codes to addresses (geocoding).

Public-Use Microdata files—Disclosure-free information for sampled individual records allowing for special tabulations of data not otherwise provided.



U.S. Department of Commerce
BUREAU OF THE CENSUS

RESOURCES

EMPLOYMENT, WAGE & INCOME DATA

Dept. of Labor & Industrial Relations, Division of Employment Security.

HEALTH

Missouri Center for Health Statistics

AGRICULTURE

Missouri Division of Agriculture (Crop & Livestock Reports, Farm Facts)

DATA ON TYPE OF ASSISTANCE RECEIVED, DAY CARE CHILD NEGLECT, ETC.

Missouri Department of Social Services, Division of Family Services
(Monthly Administrative Analysis Reports)

COUNTY BUDGET DATA

Missouri State Auditor's Office

MO CRIME SUMMARIES

Missouri Dept. of Public Safety, Highway Patrol

STATE DATA AND STATE GOVERNMENT PUBLICATIONS

Missouri State Data Center, Missouri State Library

EDUCATION

Division of Elementary & Secondary Education
Division of Adult Education

FACTFINDER & STATISTICAL ABSTRACT FOR THE UNITED STATES

U.S. Department of Commerce, Bureau of the Census

OFFICE OF SOCIAL & ECONOMIC DATA ANALYSIS, University of Missouri (314/882-7396)

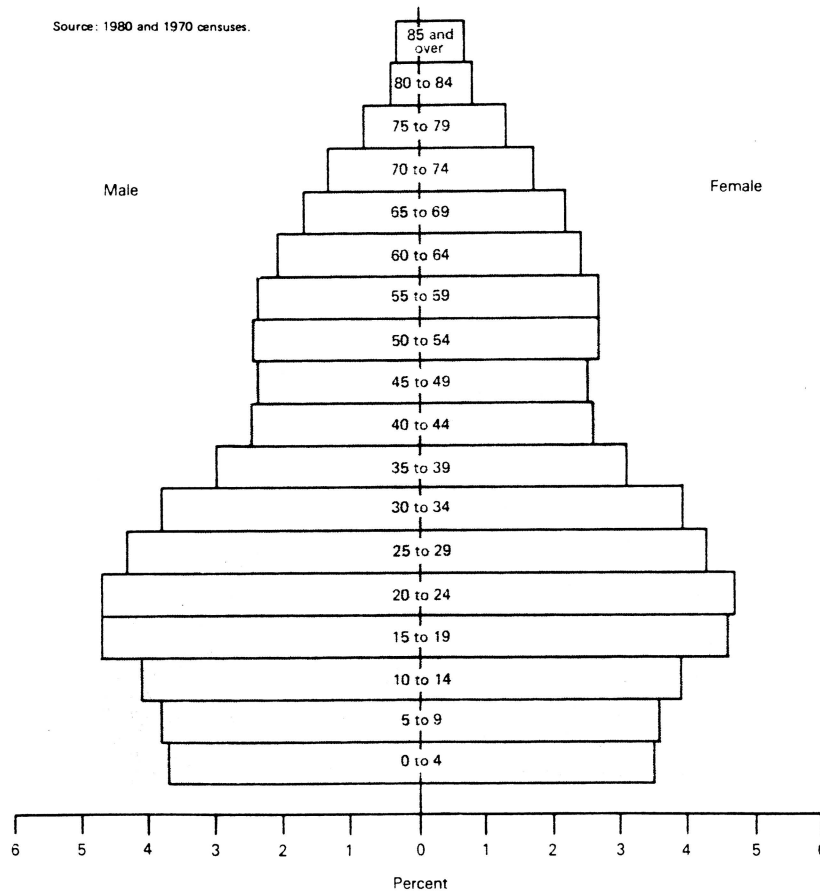
PUBLIC AFFAIRS INFORMATION SERVICES, University of Missouri

A GRAPH FROM POPULATION CHARACTERISTICS, SERIES P-20

Percent Distribution of the Resident Population, by Age and Sex: April 1, 1980, and April 1, 1970

1970
— 1980

Source: 1980 and 1970 censuses.



University Libraries
University of Missouri

Digitization Information Page

Local identifier Report [number]

Source information

Format	Book
Content type	Text with Images
Source ID	Gift Copy not added to the Collection
Notes	Printed single-sided; Cover has cut-out showing title on the next page Pages are unbound, stapled on top left; Both front and back covers are orange color (#FF9900)

Capture information

Date captured	October 2019
Scanner manufacturer	Fujitsu
Scanner model	fi-7460
Scanning system software	ScandAll Pro v. 2.1.5 Premium
Optical resolution	600 dpi
Color settings	8 bit grayscale
File types	tiff
Notes	Cover scanned separately with Opticbook

Derivatives - Access copy

Compression	Tiff: LZW compression
Editing software	Adobe Photoshop CC
Resolution	600 dpi
Color	8 bit grayscale
File types	pdf created from tiff
Notes	Images cropped, straightened, darkened