

71

ENGR

T

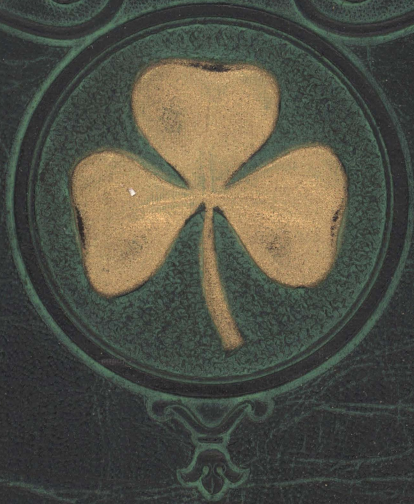
171

.M86

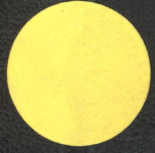
S5

1933

The
SHAMROCK



1933

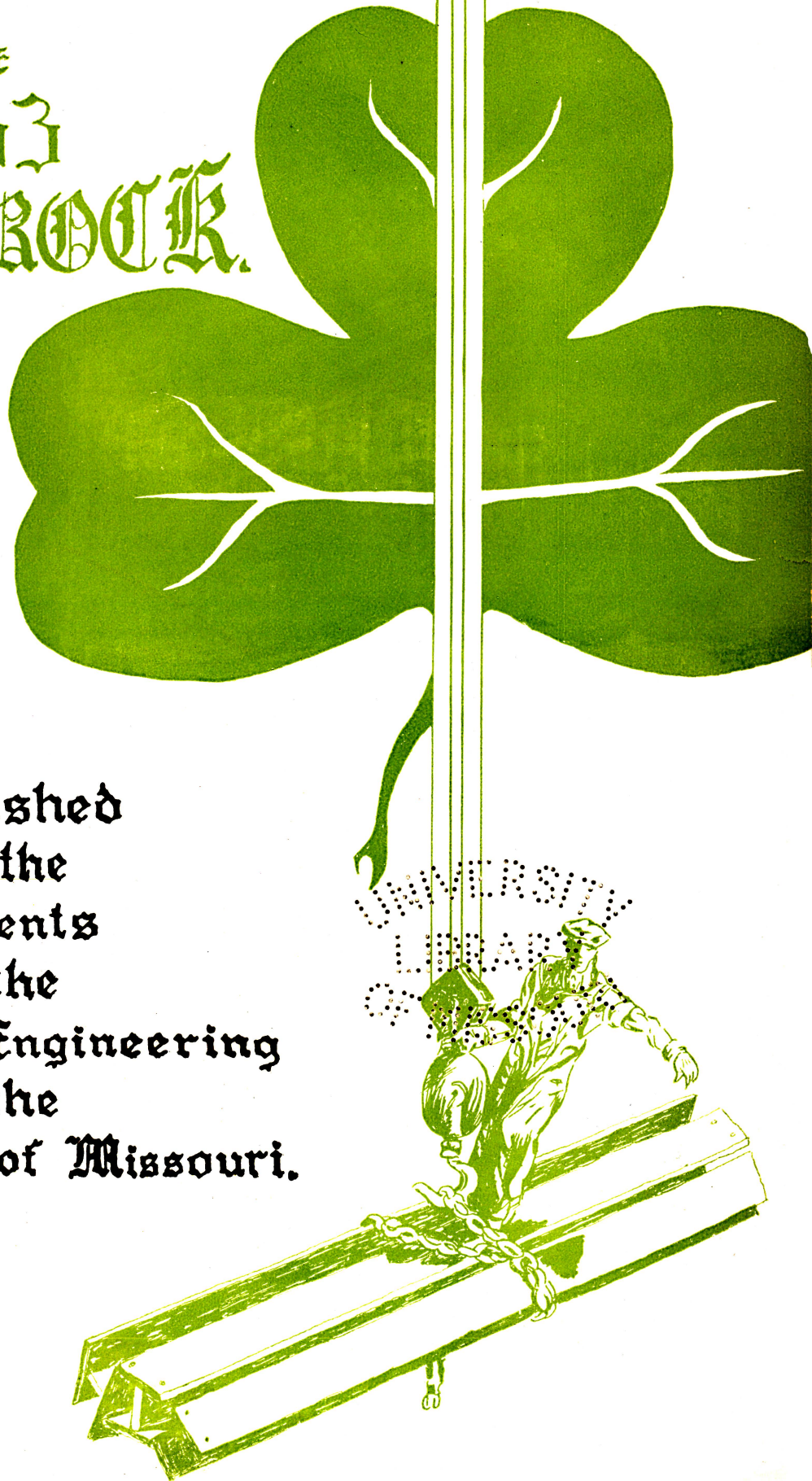




**ENGINEERING LIBRARY
UNIVERSITY OF MISSOURI**

THE
1933
SHAMROCK.

Published
by the
Students
of the
College of Engineering
of the
University of Missouri.





UNIVERSITY OF MISSOURI
COLUMBIA

DEPARTMENT OF ELECTRICAL ENGINEERING

To the Engineers of 1933, -

The climax of your year's activities on March 17, should leave with you the satisfying realization that the undertakings of this year have been carried through successfully under unusually trying circumstances. The SHAMROCK brings to you the record of these diverse interests. It will keep alive, also, the memory of four years of friendly associations in the College of Engineering. This record, I am sure, will be a source of enduring pleasure and satisfaction.

Very sincerely
Al. Sauer



378.7 M 71

S

cop. 2

1933

Engr. Lib



A. C. LANIER

Professor of Electrical Engineering

7/28/42 of Prof. W. L. Hyde.





FOREWORD:

To aid those who are to follow in realization that education is not concerned with accomplishment, but is an aid toward a harmonious expansion of human nature.



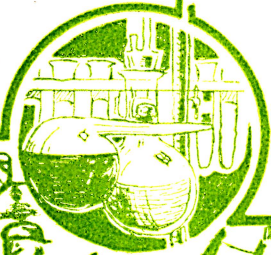


JAY W. OWENS, JR. ----- *Editor*
JOSEPH R. CASON ----- *Business Manager*

All rights reserved

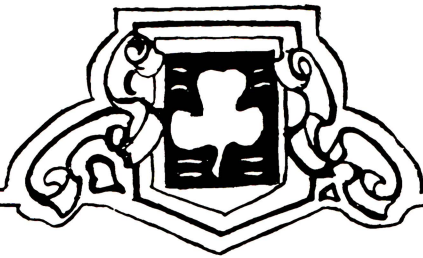


CONTENTS.
CLASSES.
ORGANIZATIONS.
ACTIVITIES.
FACULTY
BLARNEY.

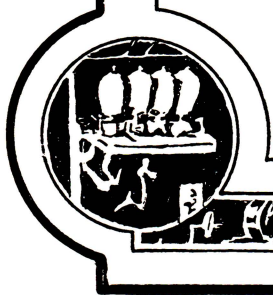




IN MEMORY



CLASSES.



To An Old Corliss

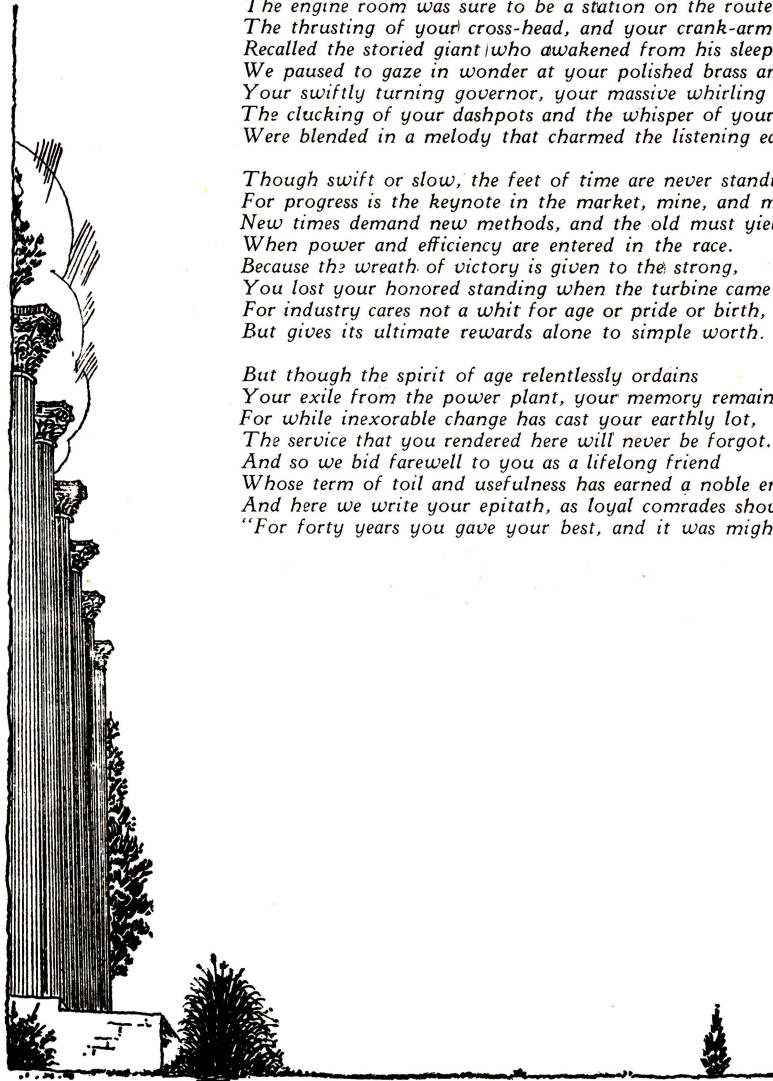
How clearly we recall the day when you were bright and new;
There wasn't anything around that could compare with you.
Beside the slide-valve engine, with its appetite for steam,
You were the incarnation of an economic dream.
Your starting was the signal in the daily strife for bread,
And when you stopped at eventide, the workers went to bed.
We looked upon you with an eye of tenderness and pride
Such as a new-made benedict might cast upon his bride.

Whenever visitors arrived, to peer and poke about,
The engine room was sure to be a station on the route.
The thrusting of your cross-head, and your crank-arm in its sweep,
Recalled the storied giant who awakened from his sleep.
We paused to gaze in wonder at your polished brass and steel,
Your swiftly turning governor, your massive whirling wheel.
The clucking of your dashpots and the whisper of your gear
Were blended in a melody that charmed the listening ear.

Though swift or slow, the feet of time are never standing still,
For progress is the keynote in the market, mine, and mill;
New times demand new methods, and the old must yield the place
When power and efficiency are entered in the race.
Because the wreath of victory is given to the strong,
You lost your honored standing when the turbine came along;
For industry cares not a whit for age or pride or birth,
But gives its ultimate rewards alone to simple worth.

But though the spirit of age relentlessly ordains
Your exile from the power plant, your memory remains;
For while inexorable change has cast your earthly lot,
The service that you rendered here will never be forgot.
And so we bid farewell to you as a lifelong friend
Whose term of toil and usefulness has earned a noble end;
And here we write your epitath, as loyal comrades should;
"For forty years you gave your best, and it was mighty good."

R. T. S.





•CHEMICAL•

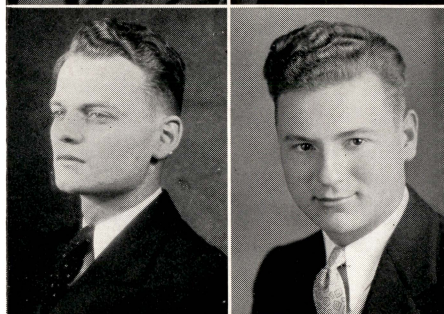
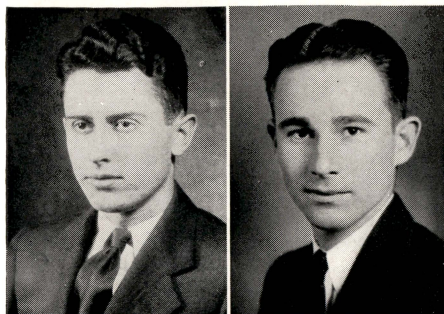
Seniors

CLARK, C. R. (*Red*) Nevada
Tau Beta Pi; Pi Mu Epsilon; Phi Eta Sigma;
Alpha Chi Sigma; A. I. Ch. E.
(*He got an E in Mechanisms*)

DONOHEW, J. N. Slater
Tau Beta Pi; Pi Mu Epsilon; Scabbard and
Blade; Alpha Chi Sigma.
(*And she married another man*)

HINDE, J. N. Hannibal
Alpha Chi Sigma; A. I. Ch. E.
(*Another Chemical*)

ROBINS, R. L. Macon
Alpha Chi Sigma; A. I. Ch. E.
(*Ladies and gentlemen,-----*)

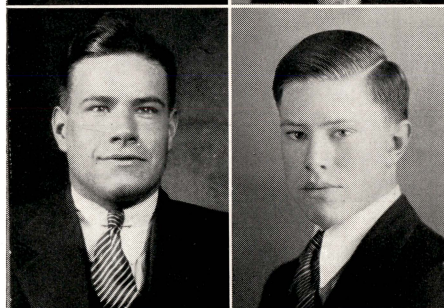


Juniors

NEILL, CARL E. Columbia
Alpha Chi Sigma; A. I. Ch. E.
(*He lost to Cebe!*)

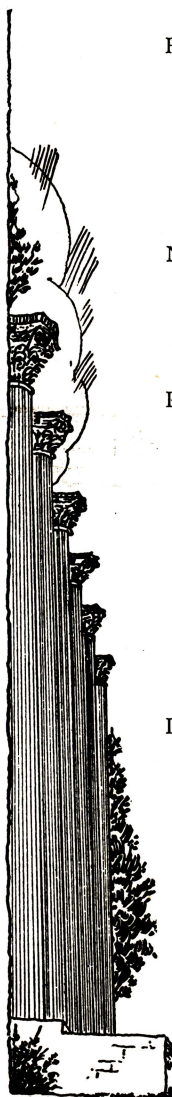
Freshmen

PELKEY, E. E. (*Ernie*) Laredo
A. I. Ch. E.; St. Pat's Board, '33.
(*One of the Board's pests.*)



Agricultural Seniors

LOWRY, CARL J. Lucerne
A. S. A. E.
(*The terracing "Ag."*)





• CIVIL •

Seniors

CEBE, JERRY F. St. Louis
Tau Beta Pi; Sigma Kappa Epsilon; Pi Mu Epsilon; A. S. C. E.; St. Pat's Board, '31 Pres., '32; knight of St. Pat.; Wrestling team, '30, '31, Cap't., '32; Football, '29; Baseball, '29; Eng. Football, '29, '30, Cap't. '31.

(*Medicine Man*)

HOLMBERG, V. V. (V. V.) Brunswick
Sigma Kappa Epsilon.

(*Our big railroad man!*)

JACKSON, DAVIS K. Jefferson City
Sigma Kappa Epsilon; A. S. C. E., Pres., '33; Publicity Director, '33.

(*The big politician!*)

Juniors

GRUMICH, EDWARD Davenport, Ia.
Alpha Sigma Phi; Sigma Kappa Epsilon; St. Pat's Board, '32, '33; A. S. C. E.

(*How does he know so much about "Sharp End"?*)

Sophomores

JUNGE, LEONARD (*Fizz*) Cole Camp
Band, '32, '33; Glee Club.

(*The musical "Soph."*)

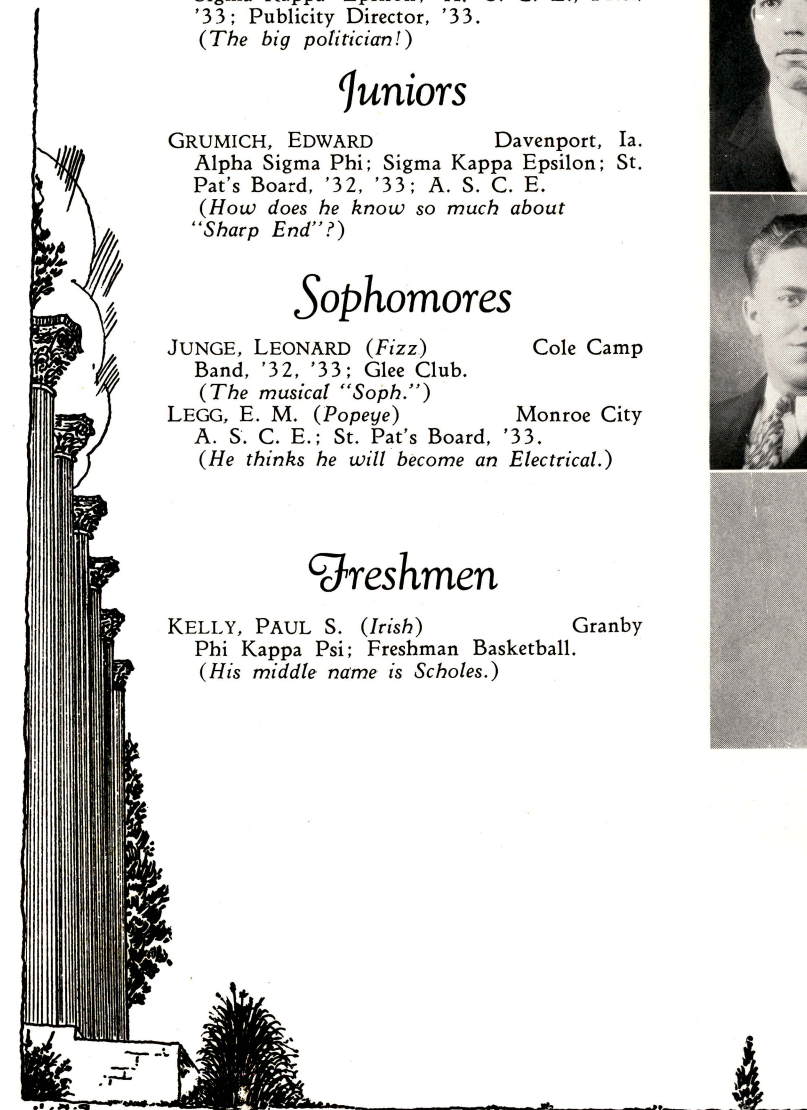
LEGG, E. M. (*Popeye*) Monroe City
A. S. C. E.; St. Pat's Board, '33.

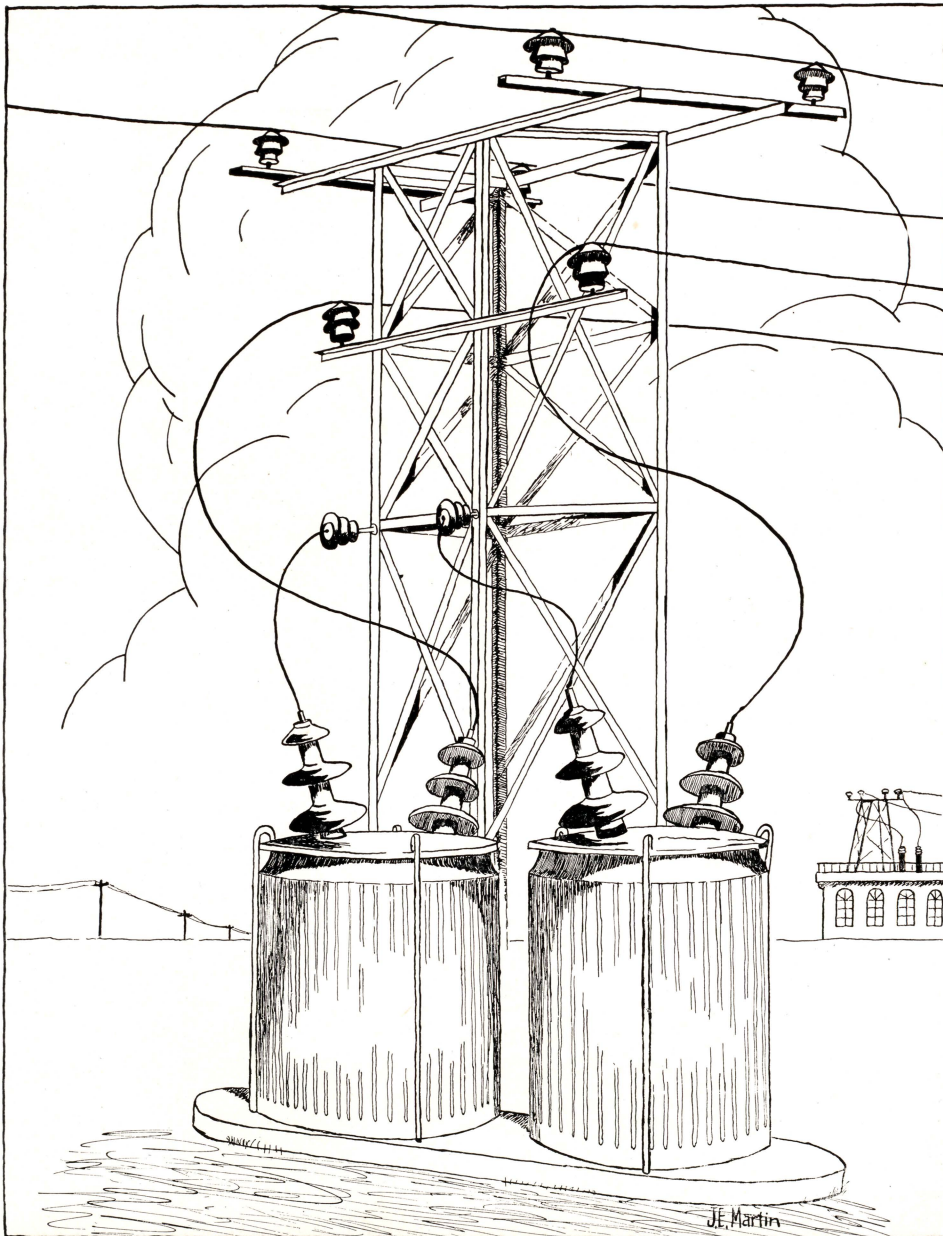
(*He thinks he will become an Electrical.*)

Freshmen

KELLY, PAUL S. (*Irish*) Granby
Phi Kappa Psi; Freshman Basketball.

(*His middle name is Scholes.*)





• ELECTRICAL •

Fifth Year Men

BATES, L. E. JR. (*Les*) North Kansas City
Alpha Sigma Phi; Eta Kappa Nu; Pres. '32;
Tau Beta Pi; Blue Key; Q. E. B. H.; A. I.
E. E., Sec.-Treas. '32; Pres. Eng. Club,
'33; St. Pat's Board, '31, '32.
(*The human dynamo.*)

BUELL, L. W. (*Red.*) Vandalia
Tau Beta Pi; Sigma Xi; Eta Kappa Nu;
Theta Sigma Tau; Shamrock Staff; Knight
of St. Pat; Magna Cum Laude.
(*Good morning dear teacher!*)

HUBBELL, M. F. St. Louis
Delta Kappa; Eta Kappa Nu; Theta Sigma
Tau; A. I. E. E.; Magna Cum Laude;
Knight of St. Pat.
(*What! Back again?*)

JOHNSON, J. S. Columbia
Tau Beta Pi; Pi Mu Epsilon; Eta Kappa
Nu; A. I. E. E.; Scabbard and Blade.
(*One of the few who took E. M. C. and
passed it.*)

JOHNSON, W. D. (*De*) Columbia
Eta Kappa Nu; Sec. '30; A. I. E. E.; St.
Pat's Board, '28; Glee Club.
(*He must like this place.*)

SHEPHERD, J. E. (*Shep*) LaPlata
Alpha Sigma Phi; Q. E. B. H.; Phi Beta
Kappa; Sigma Xi; Blue Key; Tau Beta Pi;
Eta Kappa Nu; Pi Mu Epsilon; Pan-Hellenic
Council; Phi Eta Sigma; Student Council;
St. Pat's Board; A. I. E. E.
(*He's all "keyed" up!*)

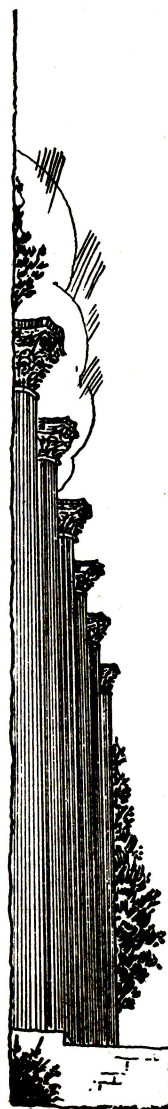
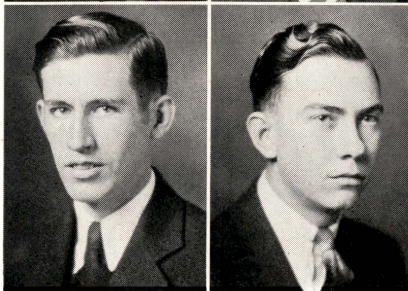
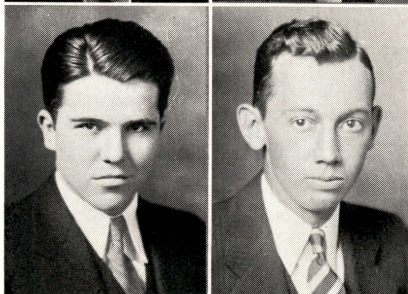
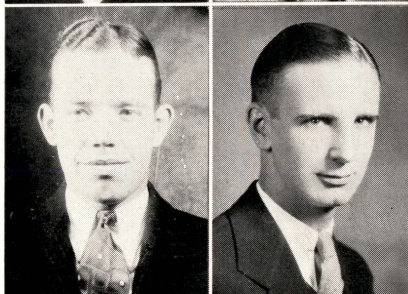
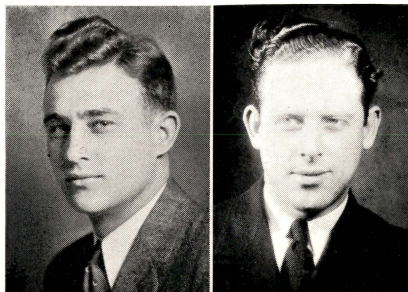
Seniors

BEERS, N. R. Seymour
Phi Eta Sigma; Pi Mu Epsilon; Sigma Xi;
A. I. E. E.
(*He and "Wenie" should put on the gloves*)

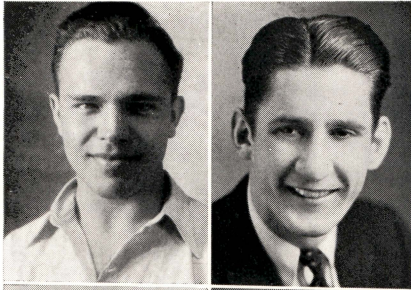
CASON, J. R. (*Joe*) Columbia
Delta Kappa; Eta Kappa Nu; Shamrock
Staff, '31, '32, Bus. Mgr. '33.
(*Another farm boy gone wrong.*)

CREWS, P. J. Columbia
A. I. E. E.
(*A living example of inertia.*)

COFFMAN, A. L. (*Al*) Columbia
Acacia; Pi Mu Epsilon; A. I. E. E., Chair-
man '33; Radio Club.
(*"Well, boys, I finally got my A. C. prob-
lems in!"*)

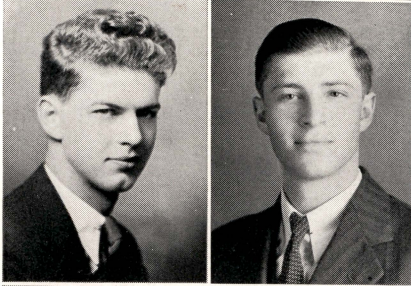


The 1933 Shamrock



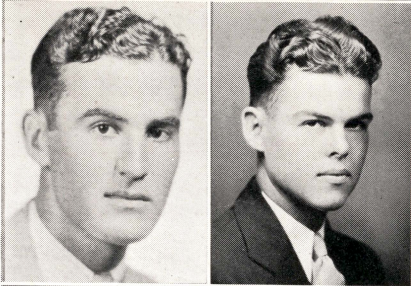
CUNNINGHAM, R. C. (*Dick*) Pattonsburg
Tau Beta Pi; Eta Kappa Nu; Pi Mu Epsilon;
Sigma Xi; Treas. Eng. Club, '33.
(*Medicine Man*)

DIMMICK, L. L. Columbia
Ata Kappa Nu, Treas. '33; A. I. E. E.
(*Whoops M'dear. That Smile!*)



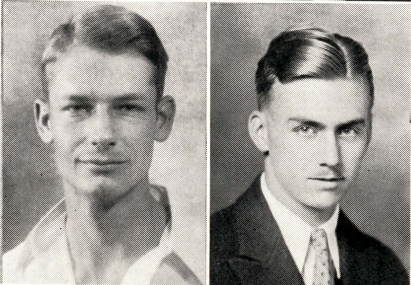
GRIESEL, O. E. (*Ott*) Odessa
Eta Kappa Nu; A. I. E. E.
(*Sounds Dutch to us!*)

LEWIS, C. L. Savannah
Eta Kappa Nu, Sec. '33; Theta Sigma Tau,
Sec. '33; A. I. E. E.
(*He likes Jeff. City!*)



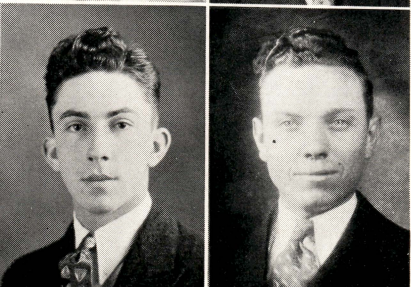
MCGIRL, R. L. (*Rosie*) Odessa
A. I. E. E., Sec.-Treas. '33; Sec. Eng. Club
'33; Freshman Football, Basketball, and
Track.
(*Comic valentines? ? ?*)

OWENS, J. W. (*Jay*) Columbia
Lambda Chi Alpha; Eta Kappa Nu, Vice-
Pres. '33; A. I. E. E.; Editor of the 1933
Shamrock; Editor of the Eng. Monthly
'32; Pistol Club '32; Polo Ass'n. '32, '33.
(*Censored! !*)



SMITH, K. A. (*Kenny*) Polo
Tau Beta Pi; Pi Mu Epsilon; Phi Eta Sigma.
(*Oh my! Such immodesty.*)

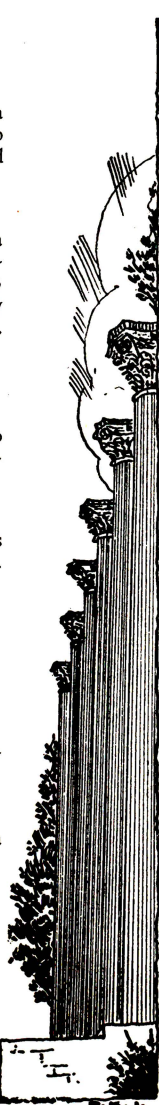
THORNE, C. W. St. Louis
Alpha Sigma Phi; Eta Kappa Nu; A. I. E.
E.; Band; Gym team.
(*Isn't the mustache becoming?*)



BLED SOE, E. A. (*Gene*) Perry
Delta Tau Delta; Pistol Club.
(*He has E. M. A. to look forward to*)

FROST, C. W. Columbia
Pistol Club, '30, '31, '32.
(*He's grown some.*)

Juniors



The 1933 Shamrock

GAEBLER, RAY A. (*Dog*) St. Louis
A. I. E. E.; Stripes and Diamonds.
(*"Can I help it if she fell for me?"*)

GOLDBERG, ALFRED (*Al*) Brooklyn, N. Y.
Phi Sigma Delta; A. I. E. E.
(*Ladies' man!*)

HARVEY D. A. Noel
A. I. E. E.; Ed. of the Eng. Monthly '33.
(*He took Heat A! !*)

MITCHELL, M. D. St. Louis
Gym. Club.
(*Piggy still remembers him.*)

ROGERS, L. S. (*Lou*) Kansas City
Phi Sigma Delta; Workshop; A. I. E. E.
(*How long did it take to develop that sorority strut?*)

SMARR, L. K. (*Larry*) Columbia
Acacia; Scabbard and Blade; Theta Sigma
Tau; Pistol team, '30, '31, Cap't. '32.
(*Be a Smarr, learn to shoot.*)

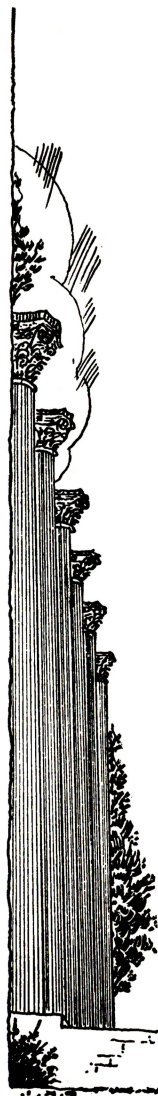
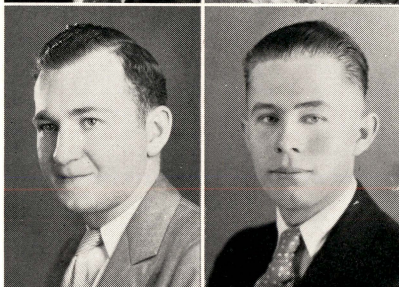
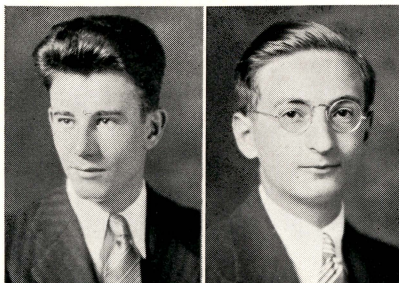
Sophomores

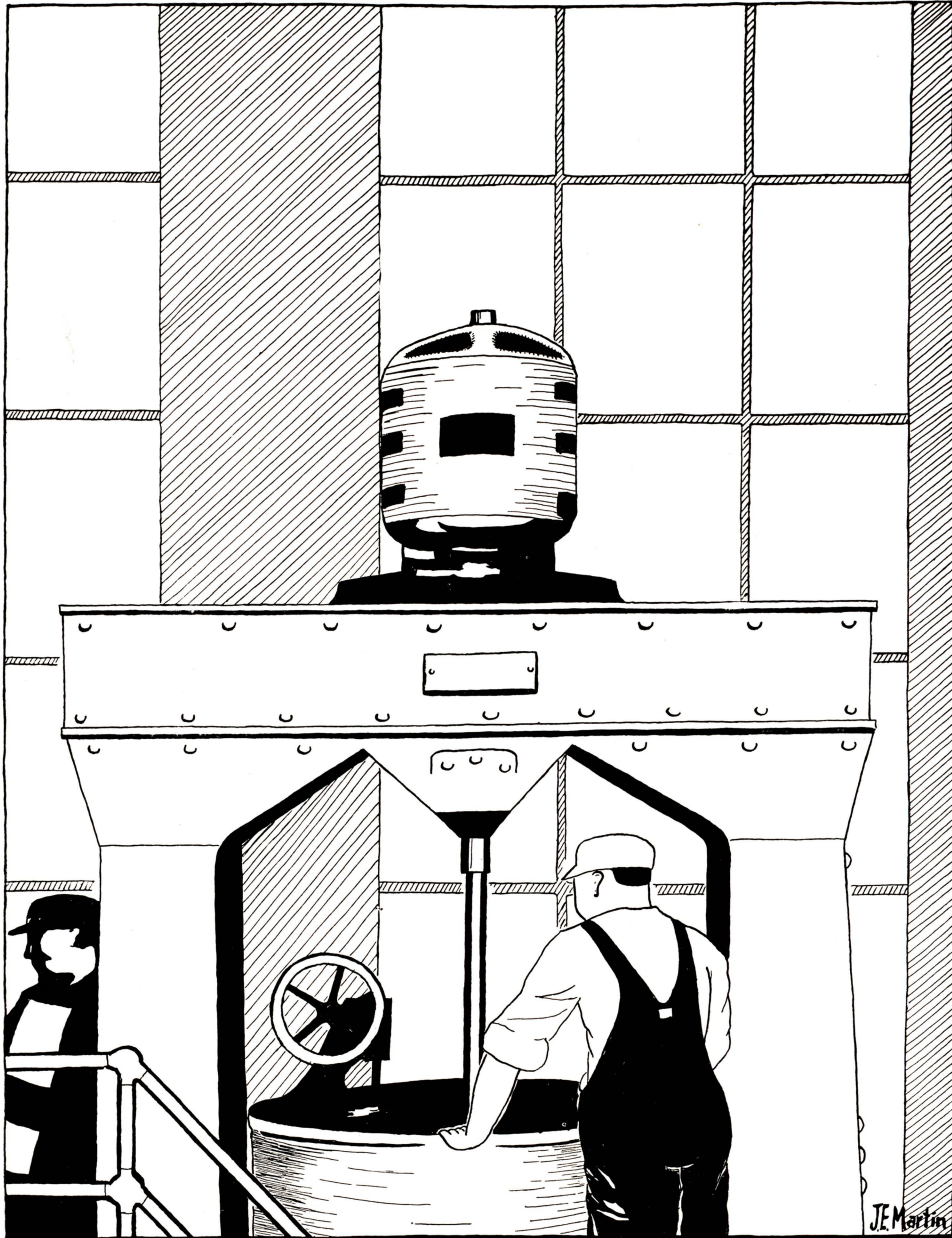
WALLIN, GUS Chicago
A. I. E. E.
(*He says he never smiles.*)

ROBARDS, W. S. (*Bill*) St. Louis
Alpha Sigma Phi; St. Pat's Board '33;
Sophomore Council; Tiger Battery.
(*The Freshmen's idea of Simon Legree!*)

Freshmen

SHORT, G. B. (*Bub*) Pierce City
Band; Orchestra; Men's Glee Club.
(*Christian College sweetheart!*)





• MECHANICAL •

Seniors

AUSTIN, J. K. Jefferson City
Band; Orchestra; St. Pat's Board, '32, '33;
Chairman St. Pat's Ball '32; Bus. Mgr.
Eng. Club '33; A. S. M. E., Sec.-Treas. '33.
(He'll be with us again.)

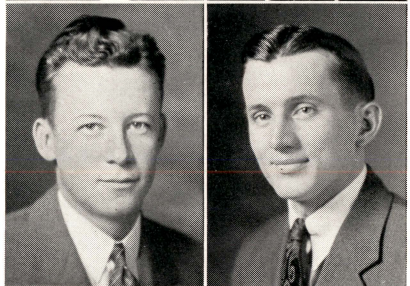
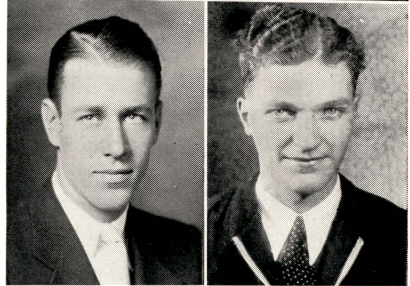
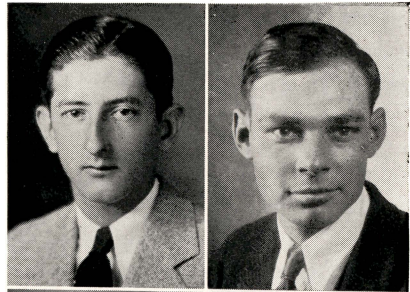
BONNOT, A. J. Linn
Pi Mu Epsilon; Pi Tau Sigma; A. S. M. E.,
Vice-Pres. '33.
(The king of them all.)

EDWARDS, R. P. (Dick) Webster Grove
Phi Delta Theta; Tau Beta Pi; Pi Mu Ep-
silon; Pi Tau Sigma; A. S. M. E.; Track
'33.
(What the well-dressed engineer will wear.)

FITCH, R. W. (Russ) Wilson, N. Y.
A. S. M. E., Sec.-Treas. '32; Shamrock
Staff '32.
(He's a long way from home.)

PIXLEY, W. I. Ferguson
Pi Kappa Alpha; Pi Tau Sigma; St. Pat's
Board '30; Tomb and Key; Student Senate.
(An enterprising Mechanical.)

STADTHERR, N. G. (Nick) Cole Camp
Tau Beta Pi; Pi Tau Sigma; Pi Mu Epsil-
on; A. S. M. E., Pres. '33.
(He likes senioritas but-----)



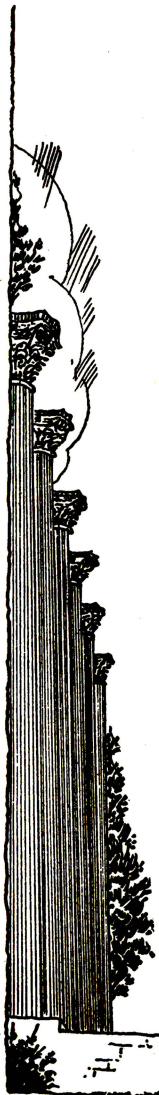
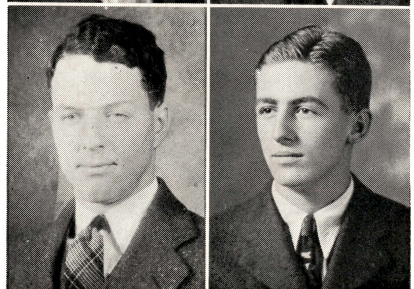
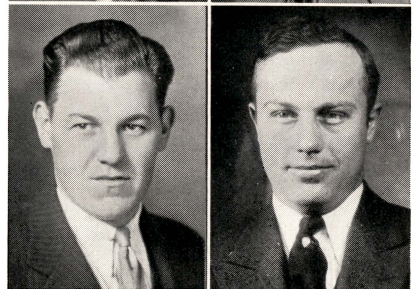
Juniors

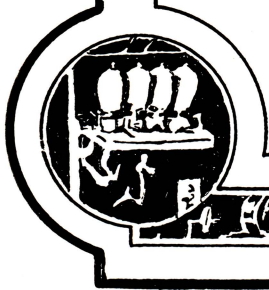
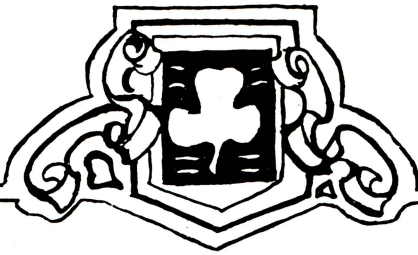
DONNELLY, E. H. (Ed) Slater
A. S. M. E.
(The "ice-man".)

JOHNSON, B. H. (Jo-Jo) Columbia
St. Pat's Board, '31, '32; Vice-Pres. Eng.
Club '33.
(What's happened to him?)

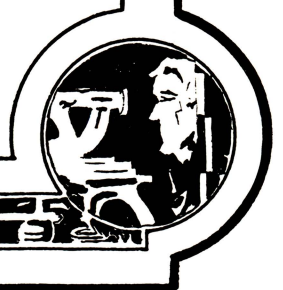
KERSTING, E. H. (Ed) St. Louis
A. S. M. E.
(The Engine school wit.)

ROTHMEYER, W. R. Columbia
Pi Tau Sigma; St. Pat's Board, '33; A. S.
M. E.
(He's no ladies' man!)





ORGANIZATIONS



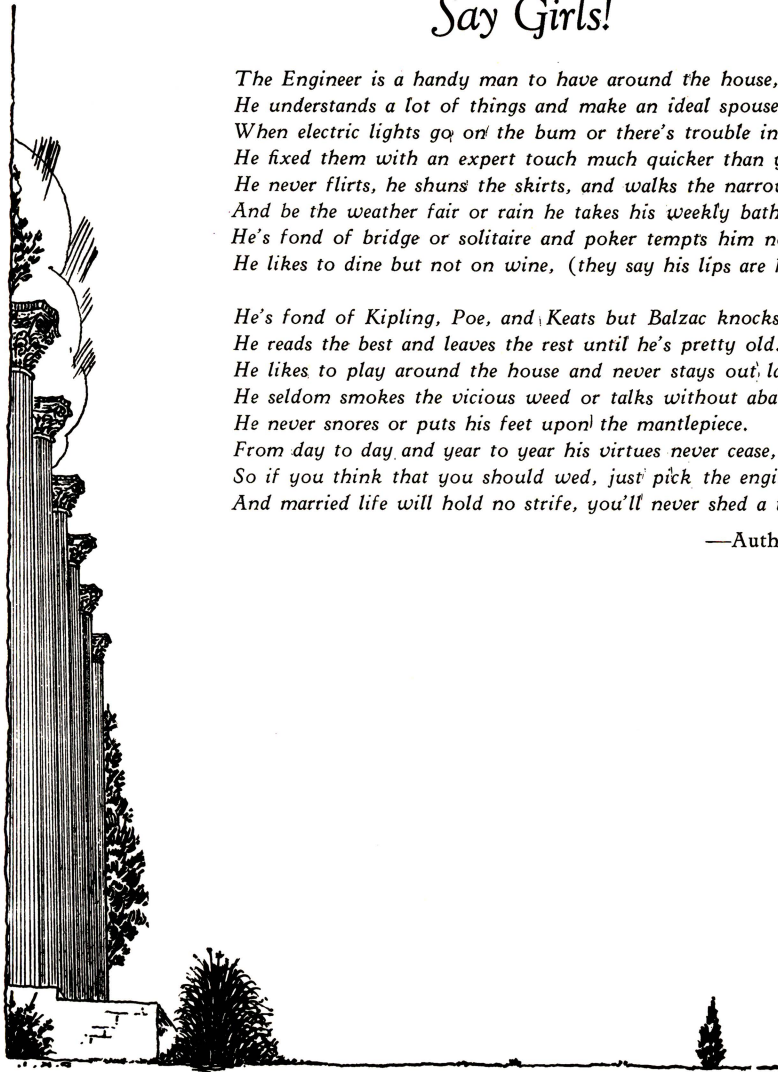
ORGANIZATIONS

Say Girls!

*The Engineer is a handy man to have around the house,
He understands a lot of things and make an ideal spouse.
When electric lights go on the bum or there's trouble in the sink,
He fixed them with an expert touch much quicker than you think.
He never flirts, he shuns the skirts, and walks the narrow path,
And be the weather fair or rain he takes his weekly bath.
He's fond of bridge or solitaire and poker tempts him not,
He likes to dine but not on wine, (they say his lips are hot.)*

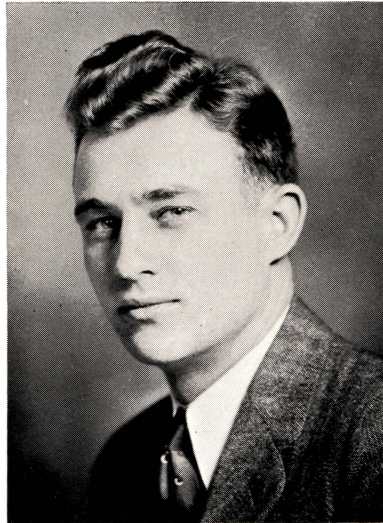
*He's fond of Kipling, Poe, and Keats but Balzac knocks him cold,
He reads the best and leaves the rest until he's pretty old.
He likes to play around the house and never stays out late,
He seldom smokes the vicious weed or talks without abate.
He never snores or puts his feet upon the mantlepice.
From day to day and year to year his virtues never cease,
So if you think that you should wed, just pick the engineer,
And married life will hold no strife, you'll never shed a tear.*

—Author Unknown



Engineer's Club

LESLIE E. BATES	President
B. H. JOHNSON	Vice-President
R. L. MCGIRL	Secretary
R. CUNNINGHAM	Treasurer
J. K. AUSTIN	Business Manager



The Engineers' Club is one of the oldest and strongest student organizations on the University Campus. The purpose of the Club is to promote a spirit of good fellowship and of professional unity among its members. The membership is made up of all the students enrolled in the College of Engineering. Executive organizations under whose direction the main projects of the Club are carried on are: The St. Pat's Board, the Shamrock Staff, and the Campus Squad.

The St. Pat's Board, made up of elected representatives of the four classes, plans and supervises the annual celebration honoring St. Pat, the Engineers' patron Saint. This group also directs the publication of the "Engineers' Monthly", the newspaper of the Engineers' Club.

The Shamrock Staff has charge of the publication of the Engineering School's yearbook, the Shamrock.

The Campus Squad is a combined disciplinary and membership committee. It is responsible for Freshman and Sophomore attendance at Club meetings, for the protection of the grass on the Francis Quadrangle, and the enforcement of Engineering rules and traditions.

The projects carried on by the organization are characterized by unified and enthusiastic endeavor. The work of the men together on those projects makes for a more understanding and co-operative practice of their profession after they leave school.



ROBARDS SCHATTGEN
LEGG GRUMICH ROSEBROUGH PELKEY ROTHMEYER
CUNNINGHAM WHITEBREAD CEBE BATES AUSTIN NEINHEUSER

St. Pat's Board

JERRY CEBE ----- *President*
EDWARD GRUMICH ----- *Vice-President*
S. E. WILSON ----- *Secretary*

MEMBERS

SENIORS

Jerry Cebe
R. Cunningham

J. K. Austin
S. E. Wilson

Terry Whitebread

JUNIORS

E. Grumich

A. E. Neinheuser

W. R. Rothmeyer

SOPHOMORES

E. M. Legg

J. D. Rosebrough

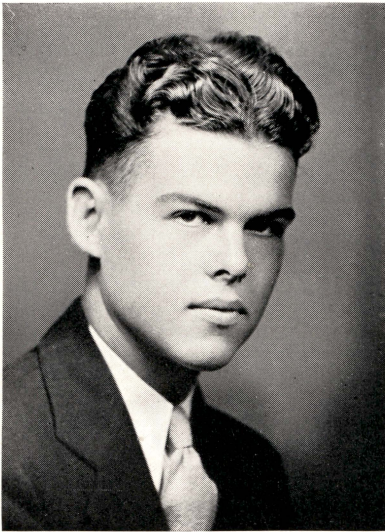
W. S. Robards

FRESHMEN

E. E. Pelkey

A. Schattgen

The 1933 Shamrock



JAY W. OWENS, JR.



JOSEPH R. CASON

The Shamrock Staff

JAY W. OWENS	Editor	JOSEPH R. CASON	Bus. Mgr.
W. R. ROTHMEYER	Associate	G. HANNA	Adv. Mgr.
A. GOLDBERG	Assistant	C. E. BEILHARZ	Assistant
J. E. MARTIN	Art	L. W. BUELL	Photographer

Nathan Kopel

ASSISTANTS
J. L. Robinett

R. A. Wilks



BEILHARZ	CASON	KOPEL	ROBINETT
ROTHMEYER		OWENS	HANNA

The Engineers' Monthly

D. A. HARVEY ----- *Editor*

AL GOLDBERG ----- *Associate Editor*

P. M. ALEXANDER ----- *Associate Editor*

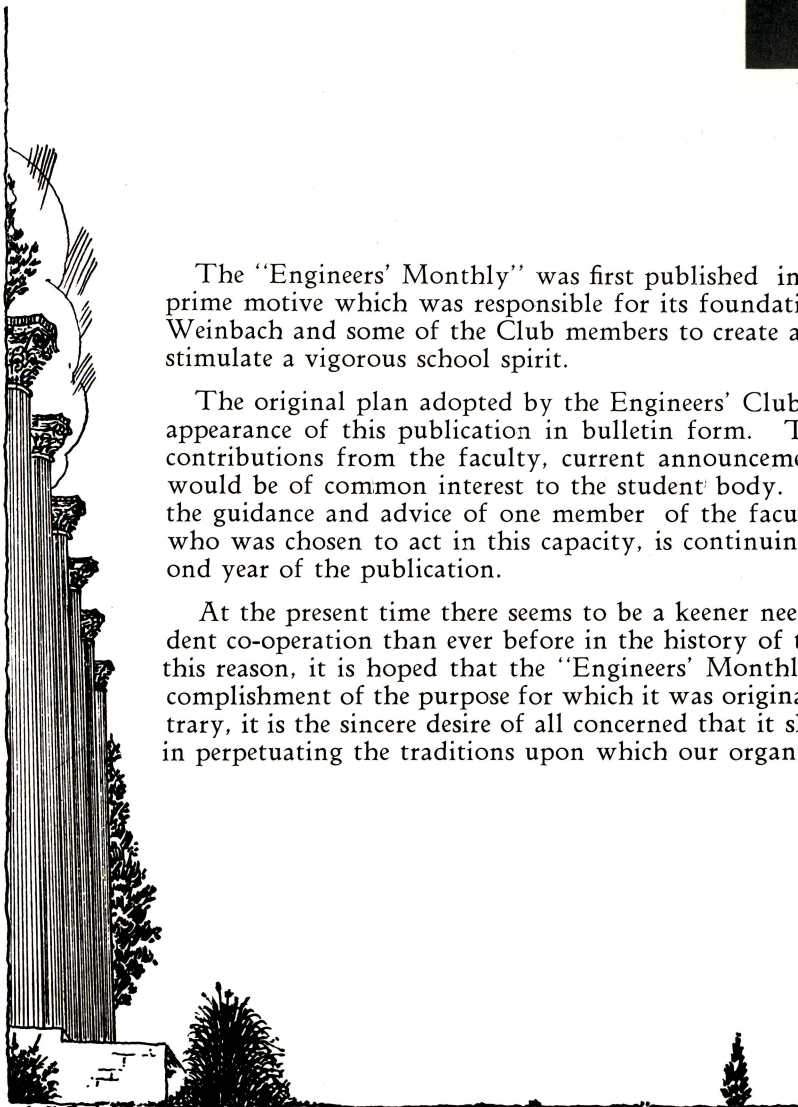


D. A. Harvey

The "Engineers' Monthly" was first published in the fall of 1931. The prime motive which was responsible for its foundation was the desire of Prof. Weinbach and some of the Club members to create an institution which would stimulate a vigorous school spirit.

The original plan adopted by the Engineers' Club provided for the monthly appearance of this publication in bulletin form. The paper was to contain contributions from the faculty, current announcements, and all such news as would be of common interest to the student body. It was to be edited under the guidance and advice of one member of the faculty. Professor Weinbach, who was chosen to act in this capacity, is continuing to do so in this, the second year of the publication.

At the present time there seems to be a keener need for school spirit and student co-operation than ever before in the history of the Engineers' Club. For this reason, it is hoped that the "Engineers' Monthly" will not fail in the accomplishment of the purpose for which it was originally intended. On the contrary, it is the sincere desire of all concerned that it shall be of increasing service in perpetuating the traditions upon which our organization is founded.





CEBE GILBERT EDWARDS BUELL DONOHEW
TRUOG STADTHERR CUNNINGHAM HAYNES JOHNSON COX
WHARTON LORAH CLARK HOFFMAN JACKSON

Tau Beta Pi

Honorary Engineering Fraternity
Founded at Lehigh University, June 1, 1885
Alpha Chapter established 1902. Colors—Seal Brown and White

C. R. CLARK	-----	President
K. H. HOFFMAN	-----	Vice-President
D. S. TRUOG	-----	Secretary
J. N. DONOHEW	-----	Cor. Secretary
R. C. CUNNINGHAM	-----	Treasurer
P. M. COX	-----	Cataloger

MEMBERS

Bates, L. E.	Goodrich, H. C.
Buell, L. W.	Guthrie, T. L.
Cebe, J. F.	Hoffman, K. H.
Clark, C. R.	Jackson, J. M.
Cox, P. M.	Johnson, J. S.
Cunningham, R. C.	Paxton, L. H.
Donohew, J. N.	Shepherd, J. E.
Edwards, R. P.	Smith, K. A.
Galbraith, R. A.	Stadtherr, N. G.
Gilbert, J. G.	Truog, D. S.

Weir, R. J.

FRATERS IN FACULTATE

G. W. Breckenridge	E. J. McCaustland	O. M. Stewart
L. M. Defoe	G. D. Newton	M. P. Weinbach
A. L. Hyde	E. C. Phillips	W. S. Williams
A. C. Lanier	T. J. Rodhouse	J. R. Wharton
J. R. Lorah	H. Schlundt	H. W. Wood, Jr.



BRINKMAN WOODRUFF MURRY CEBE
GRUMICH AMBRUSTER ROBINETT WILKS SCHOONOVER
JACKSON WAGNER LARUE ELSNER PRIEST

Sigma Kappa Epsilon

Honorary Civil Engineering Fraternity
Founded at the University of Missouri in 1929
Colors—Green and White

R. A. WILKS ----- *President*
J. F. CEBE ----- *Vice-President*
J. L. ROBINETT ----- *Sec.-Treas.*

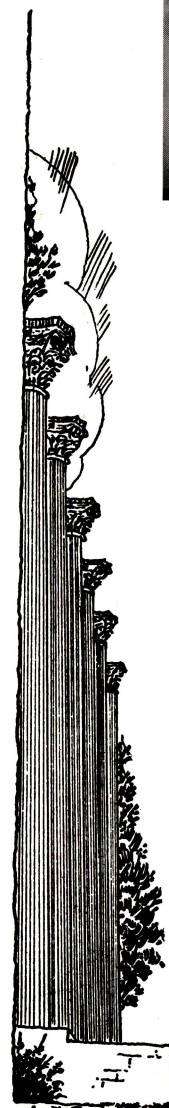
MEMBERS

Ambruster, R. H.
Brinkman, E. A.
Cebe, Jerry
Elsner, P. A.
Grumich, Edward
Holmberg, V. V.
Jackson, D. K.
Jenkins, C. A.

Murray, M. S.
Priest, M. S.
Robinett, J. L.
Schoonover, W. D.
Wagner, N. O.
Wier, R. J.
Wilks, R. A.
Woodruff, L. R.

MEMBERS IN FACULTATE

H. A. LaRue





SHEPHERD	DIMMICK	GRIESEL	CASON	GIEGER
HAYNES	CUNNINGHAM	HUBBELL	BUELL	D. JOHNSON
OWENS	JONES	WEINBACH	LANIER	THORNE

Eta Kappa Nu

Professional Electrical Fraternity
 Founded at the University of Illinois in 1902
 Iota Chapter established June, 1911. Colors—Navy Blue and Scarlet

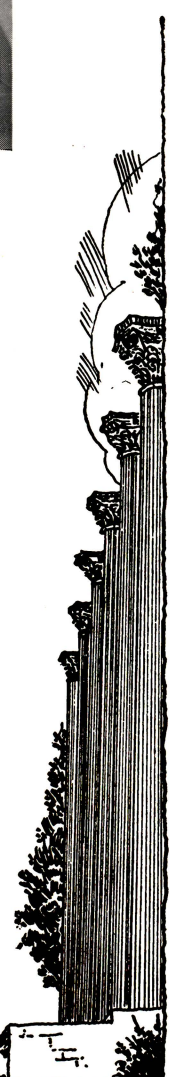
CHARLES W. THORNE	-----	President
JAY W. OWENS, JR.	-----	Vice-President
CLAUDE L. LEWIS	-----	Corr. Secretary
LAWRENCE L. DIMMICK	-----	Treasurer
JOSEPH R. CASON	-----	Asso. "Bridge" Editor

MEMBERS

Bates, L. E.	Johnson, W. D.
Buell, L. W.	Hubbell, M. F.
Cason, J. R.	Johnson, J. S.
Cunningham, R.	Lewis, C. L.
Dimmick, L. L.	Nolen, M. S.
Galbraith, R. A.	Osadchey, R.
Gieger, J.	Owens, J. W.
Goldberg, A.	Shepherd, J. E.
Griessel, O. E.	Scott, R. S.
Haynes, C. M.	Thorne, C. W.

FRATRES IN FACULTATE

M. P. Weinbach	A. C. Lanier	M. M. Jones	G. M. Ewing
----------------	--------------	-------------	-------------





BONNOT TRUOG PIXLEY ROTHMEYER STADTHERR BAKER ENGLAND
WHARTON NEWTON EDWARDS SELVIDGE GRAY

Pi Tau Sigma

Honorary Mechanical Engineering Fraternity
Founded at the University of Illinois
Epsilon Chapter established in 1925
Colors—Azure and Murry

R. P. EDWARDS	-----	President
W. I. PIXLEY	-----	Vice-President
D. S. TRUOG	-----	Secretary
N. G. STADTHERR	-----	Treasurer

MEMBERS

Baker, B. M.
Bonnot, A. J.
Edwards, R. P.
England, D. D.

Pixley, W. I.
Rothmeyer, W. R.
Stadtherr, N. G.
Truog, D. S.

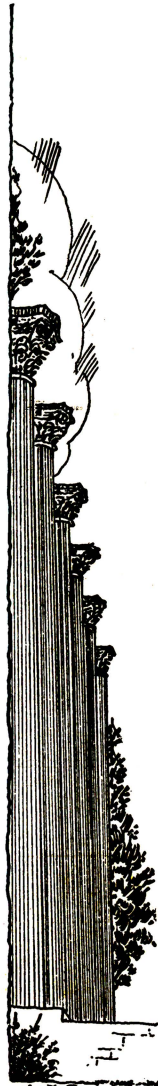
FRATRES IN FACULTATE

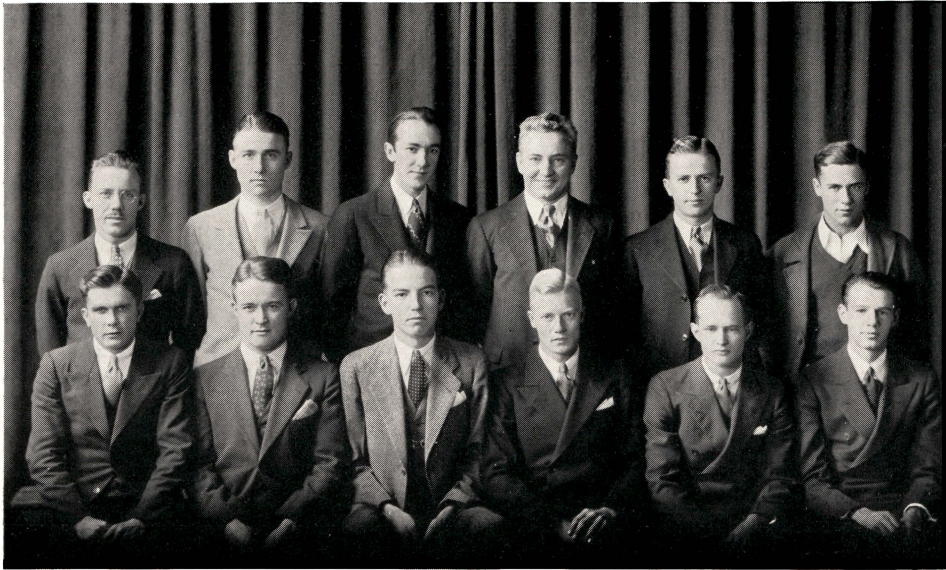
G. D. Newton

E. S. Gray

J. R. Wharton

R. W. Selvidge





AMBRUSTER HAYDON PRIEST CEBE GRUMICH DENTON
HOLMBERG WILKS JACKSON ROBINETT JENKINS ELSNER

The American Society of Civil Engineers

Missouri University Student Branch

D. K. JACKSON ----- *President*
R. A. WILKS ----- *Vice-President*
J. L. ROBINETT ----- *Sec.-Treas.*

MEMBERS

Ambruster, R. H.
Cebe, J. F.
Denton, J. D.
Elsner, P. A.
Grumich, E.
Haydon, G. R.
Holmberg, V. V.

Jackson, D. K.
Jenkins, C. A.
Love, C.
Priest, M. S.
Robinett, J. L.
Weir, R. V.
Whitebread, T.

Wilks, R. A.

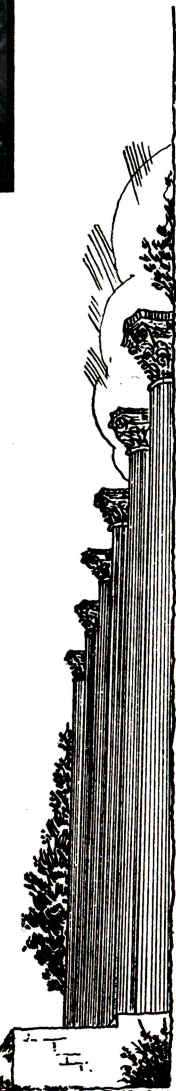
FACULTY MEMBERS

H. K. Rubey

A. L. Hyde

H. A. LaRue

E. J. McCaustland





CREWS NOLAN EDMONDSON COOK MCGIRL FROST
MUSGRAVE THORNE HUBBELL LEWIS BLEDSOE JOHNSON
GAEBLER GOLDBERG PULLIAM FISH SHORT SMARR
WALLIS WEINBACH COFFMAN LANIER CUNNINGHAM

The American Institute of Electrical Engineers

Missouri University Student Branch

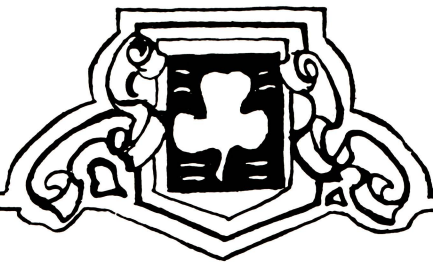
A. L. COFFMAN ----- Chairman
H. C. GOODRICH ----- Vice-Chairman
R. L. MCGIRL ----- Sec.-Treas.
M. P. WEINBACH ----- Counsellor

MEMBERS

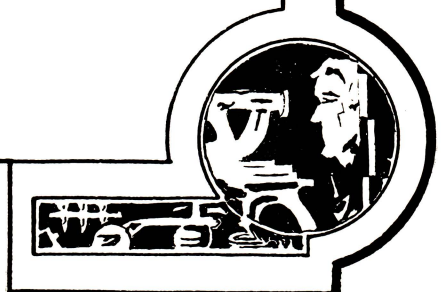
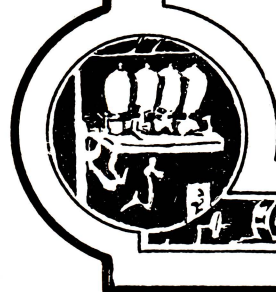
Bates, L. E.	Galbraith, R. A.	Johnson, D.
Beers, N. R.	Griessel, O. E.	Hubbell, M. F.
Buell, L. W.	Johnson, J. S.	McGir, R. L.
Coffman, A. L.	Shepherd, J. E.	Goodrich, H. C.
Cook, D. F.	Smarr, L. K.	Dimmick, L. L.
Crews, P. J.	Smith, K. A.	Owens, J. W.
Cunningham, R.	Thorne, C. W.	Gaebler, R. A.
Edmondson, G. B.	Haines, C. M.	Suter, W. V.

FACULTY MEMBERS

A. C. Lanier M. P. Weinbach C. M. Wallis



FACULTY.



The 1933 Shamrock

*Listen folks and you shall hear,
What it takes to become an engineer.*

*The first in line is not serene,
That first address of our Irish Dean.*

*And squaring a board by Miller's plan
Will knock two years growth off any man.*

*Hot sparks burn as you weld in a hurry
And you wish to God there wasn't a Murray.*

*Job plans for Phillips are mean from the start,
And you're tickled to death when it's time to depart.*

*Besides these woes there are some joys too,
For example this Materials course by Mr. LaRue.*

*The broad smile from Selvidge is very well meant,
And to many students gives encouragement.*

*Such pleasures, however, are out weighed by a ton
When Mechanisms you take under Wharton.*

*And you wish to Hell you were pitching hay,
When you're exposed to "Heat" under Prof. Gray.*

*You are always in doubt in E. M. A.
And you cuss "Weinie" more from day to day.*

*Even Wallis who teaches the same
No longer has his maiden name.*

*And taking Lanier's course in electromag,
Is like crossing the continent on a worn-out nag.*

*You wish that you had taken acrobatics
When Woods preaches math in his course mechanics.*

*But again there is hope and a little respite
When Rodhouse works problems by a damsite.*

*And Newton's course in Machine Design A
Is not much work but more like play.*

*However, you must weigh and stir with lots of care
To please Dr. Lorah, so he doesn't swear.*

*Hyde can teach you a lot of statics,
And make you sigh if you failed to get mechanics.*

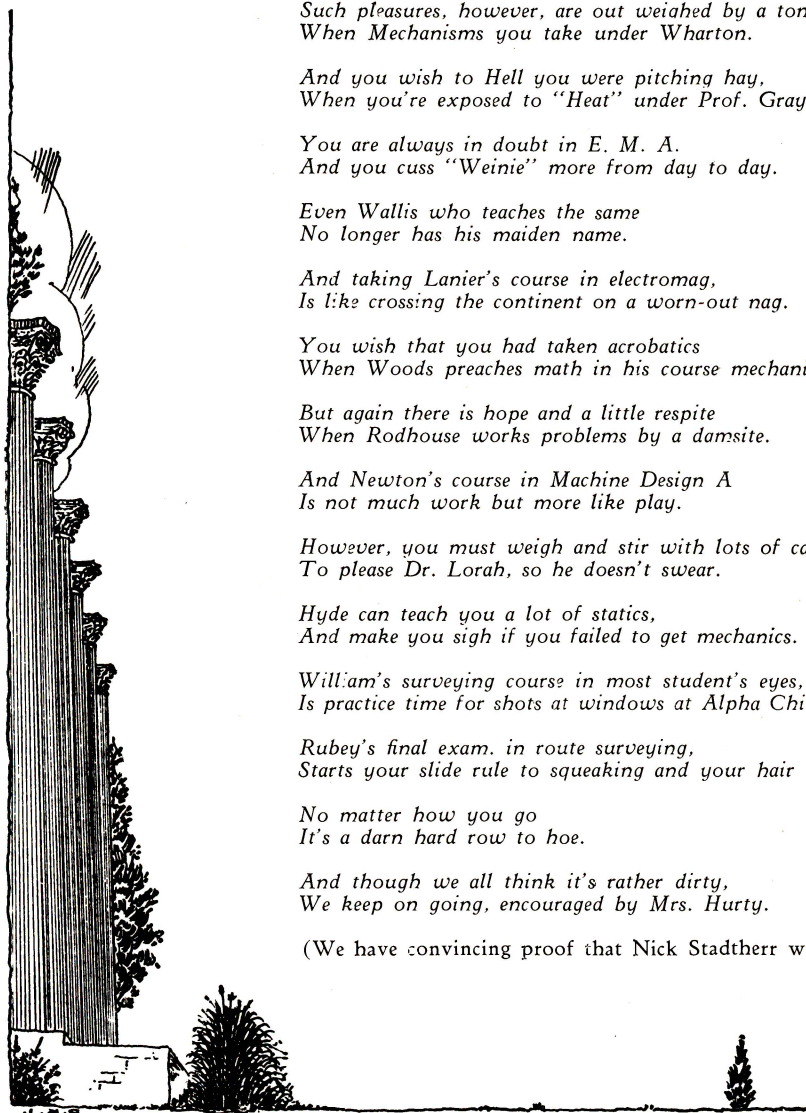
*William's surveying course in most student's eyes,
Is practice time for shots at windows at Alpha Chi's.*

*Rubey's final exam. in route surveying,
Starts your slide rule to squeaking and your hair to greying.*

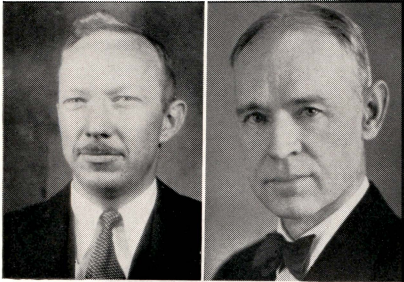
*No matter how you go
It's a darn hard row to hoe.*

*And though we all think it's rather dirty,
We keep on going, encouraged by Mrs. Hurty.*

(We have convincing proof that Nick Stadtherr wrote the above.)



The 1933 Shamrock



E. S. GRAY
Assoc. Professor of Mechanical En-
gineering.
S. B., M. I. T., 1925.

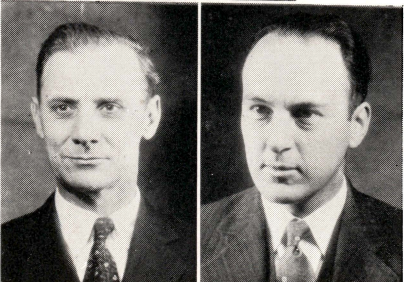
A. L. HYDE
Professor of Bridge Engineering.
Ph. B., Yale, 1886.



M. M. JONES
Assoc. Professor of Agricultural En-
gineering.

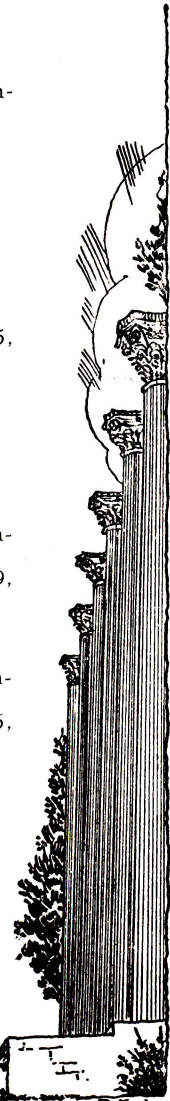


A. C. LANIER
Professor of Electrical Engineering.
B. S. in E. E., 1900, M. E. 1905,
Tenn.; M. E. E., Harvard, 1909.



H. A. LARUE
Assoc. Professor of Highway Engin-
eering.
B. S. in C. E., 1907, C. E., 1909,
Missouri.

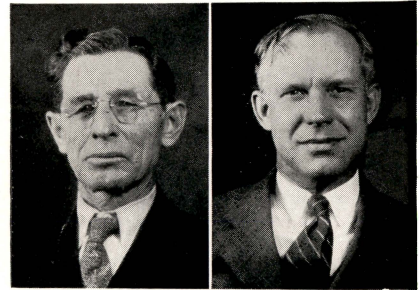
J. R. LORAH
Assoc. Professor of Chemical Engin-
eering.
B. S. in Ch. E., 1921, M. S., 1925,
Ph. D., 1927, Washington.



The 1933 Shamrock

E. J. MCCAUSTLAND
Dean of Faculty Professor of Sanitary
Engineering.
B. S. in C. E., 1892, C. E., 1895,
Cornell Col.; M. C. E., Cornell, 1897.

W. H. MILLER
Instructor in Mechanical Engineering.
B. S. in Ed., 1925, Missouri.



G. D. NEWTON
Professor of Mechanical Engineering.
B. S. in M. E., 1896, M. E., 1917,
Michigan.

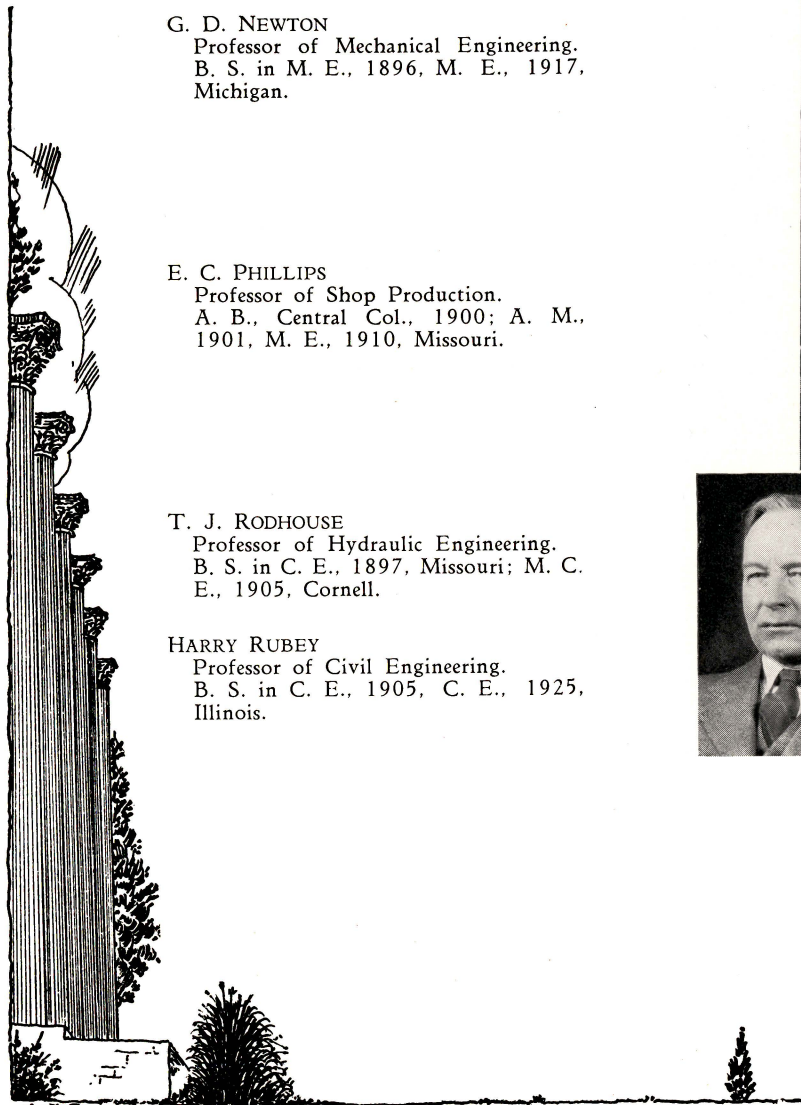
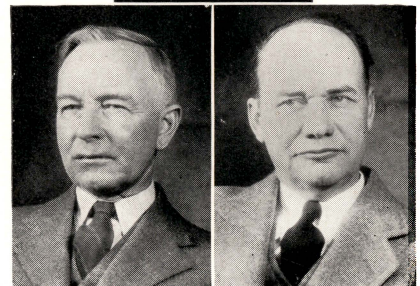


E. C. PHILLIPS
Professor of Shop Production.
A. B., Central Col., 1900; A. M.,
1901, M. E., 1910, Missouri.



T. J. RODHOUSE
Professor of Hydraulic Engineering.
B. S. in C. E., 1897, Missouri; M. C.
E., 1905, Cornell.

HARRY RUBEY
Professor of Civil Engineering.
B. S. in C. E., 1905, C. E., 1925,
Illinois.



The 1933 Shamrock



R. W. SELVIDGE
Professor of Industrial Education.
B. Pd., Central Missouri State Teachers
Col., 1900; B. S., 1908, M. A., 1909,
Columbia.

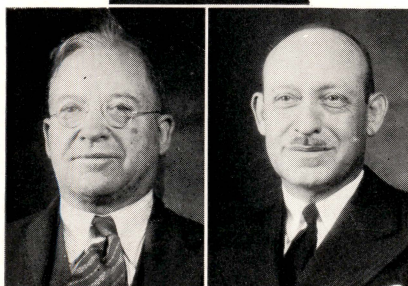
C. M. WALLIS
Instructor in Electrical Engineering.
B. S. in E. E., 1926, Vermont; M.
S. in E. E., 1928, M. I. T.



M. P. WEINBACH
Professor of Electrical Engineering.
A. B., 1905, B. S. in E. E., A. M.,
1907, Missouri.



J. R. WHARTON
Assoc. Professor of Mechanical En-
gineering.
B. S. in M. E., 1905, M. E., 1906,
Missouri.



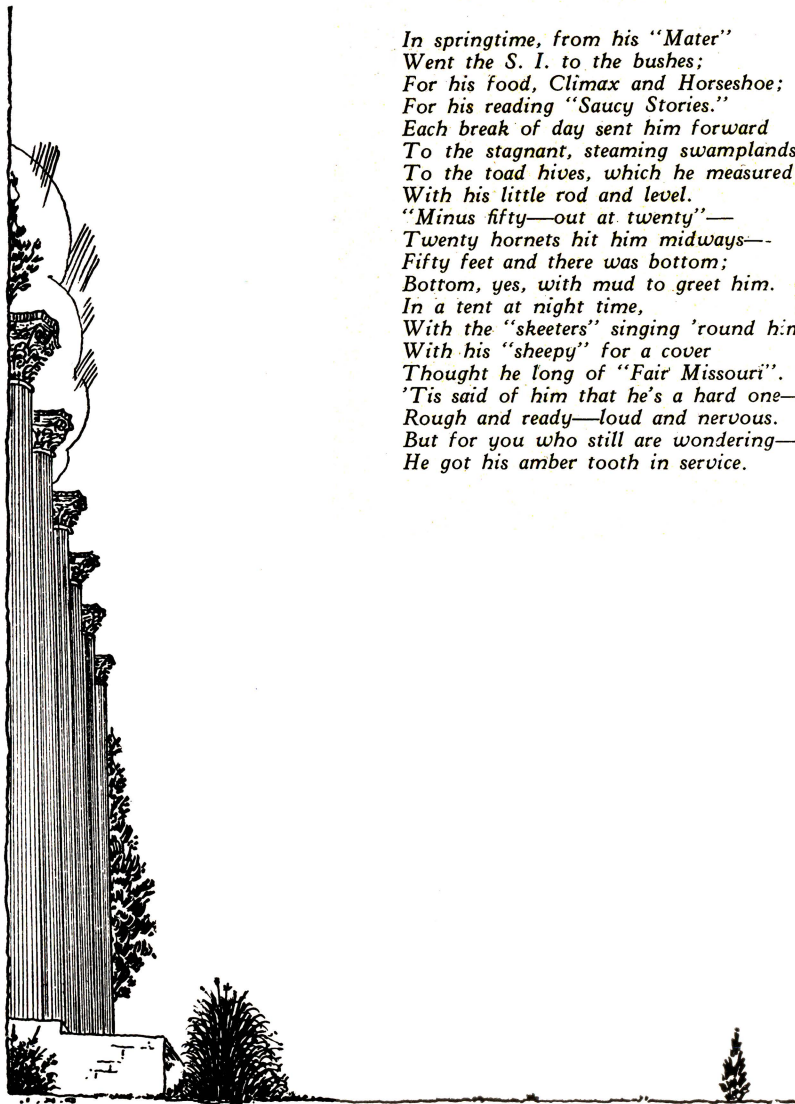
W. S. WILLIAMS
Professor of Topographic Engineering.
C. E., 1885, Missouri.

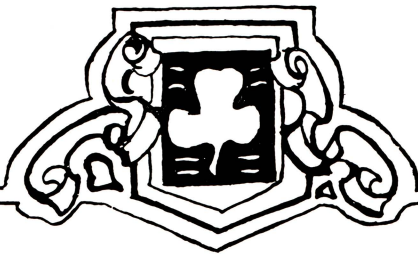
H. W. WOOD, JR.
Assoc. Professor of Mechanics in En-
gineering.
B. S. in C. E.; C. E., 1925, Missouri.



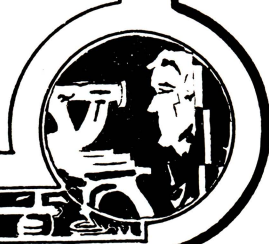
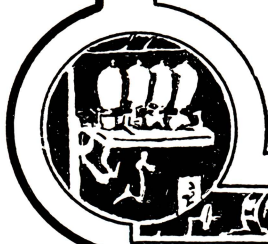
A Reverie

*In springtime, from his "Mater"
Went the S. I. to the bushes;
For his food, Climax and Horseshoe;
For his reading "Saucy Stories."
Each break of day sent him forward
To the stagnant, steaming swamplands;
To the toad hives, which he measured
With his little rod and level.
"Minus fifty—out at twenty"—
Twenty hornets hit him midway—
Fifty feet and there was bottom;
Bottom, yes, with mud to greet him.
In a tent at night time,
With the "skeeters" singing 'round him,
With his "sheepy" for a cover
Thought he long of "Fair Missouri".
'Tis said of him that he's a hard one—
Rough and ready—loud and nervous.
But for you who still are wondering—
He got his amber tooth in service.*



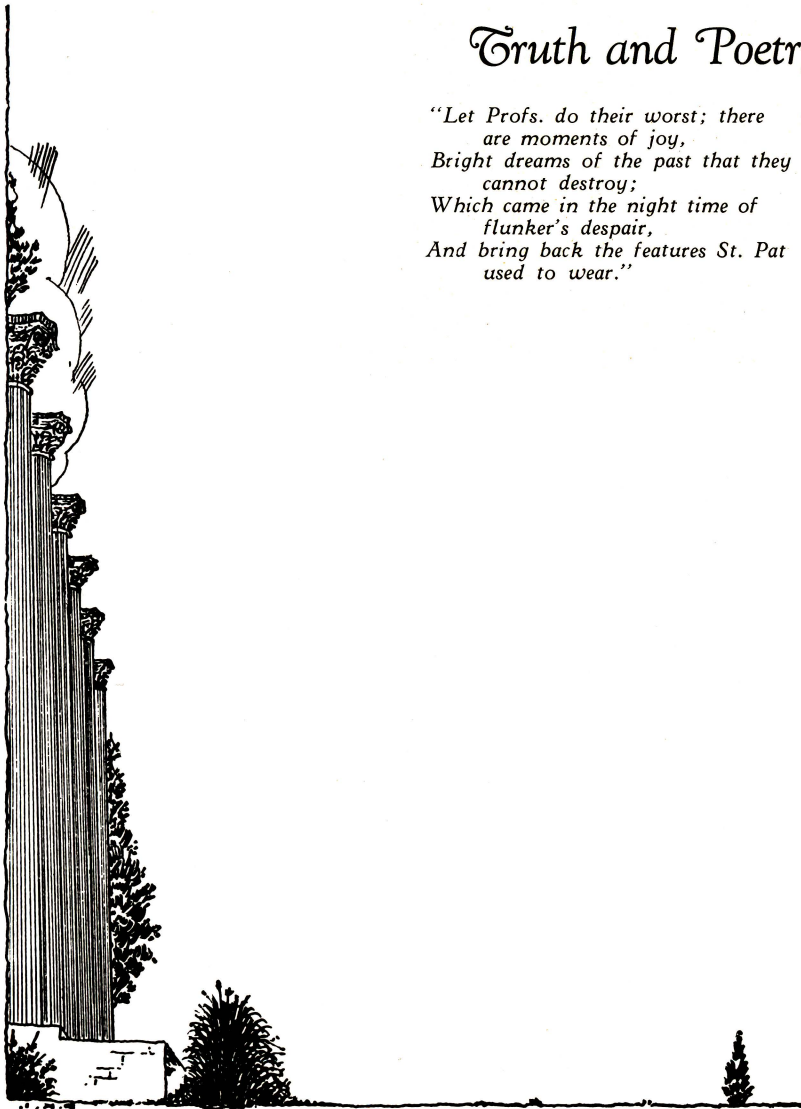


BLARNEY.



Truth and Poetry

*"Let Profs. do their worst; there
are moments of joy,
Bright dreams of the past that they
cannot destroy;
Which came in the night time of
flunker's despair,
And bring back the features St. Pat
used to wear."*



VISIT HOME
the
Economical Way
Use Long Distance
MISSOURI TELEPHONE CO.

Prof. Weinbach (in A. C.): "Vot iss resistance, Cunningham?"
Dick Cunningham: "Resistance is something most girls have heard of, but few practice."

Mr. E. S. Gray pens the following on a Heat A report of an enterprising engineer: "This constant is not a constant!"
Can you beat it?

Ladd (in E. M. B.): "Are we supposed to be able to sit down and derive all these equations given in our E. M. B. book?"
Prof. Lanier: "Well, I'm not interested in the posture you use but you should know the fundamental principles involved."

Definition of a gold-digger: A co-ed who has lost her amateur standing.

The Great A & P Tea Company
Quality
MEATS—GROCERIES
FRESH FRUITS & VEGETABLES

915 Broadway

The 1933 Shamrock

*Listen folks and you shall hear,
What it takes to become an engineer.*

*The first in line is not serene,
That first address of our Irish Dean.*

*And squaring a board by Miller's plan
Will knock two years growth off any man.*

*Hot sparks burn as you weld in a hurry
And you wish to God there wasn't a Murray.*

*Job plans for Phillips are mean from the start,
And you're tickled to death when it's time to depart.*

*Besides these woes there are some joys too,
For example this Materials course by Mr. LaRue.*

*The broad smile from Selvidge is very well meant,
And to many students gives encouragement.*

*Such pleasures, however, are out weighed by a ton
When Mechanisms you take under Wharton.*

*And you wish to Hell you were pitching hay,
When you're exposed to "Heat" under Prof. Gray.*

*You are always in doubt in E. M. A.
And you cuss "Weinie" more from day to day.*

*Even Wallis who teaches the same
No longer has his maiden name.*

*And taking Lanier's course in electromag,
Is like crossing the continent on a worn-out nag.*

*You wish that you had taken acrobatics
When Woods preaches math in his course mechanics.*

*But again there is hope and a little respite
When Rodhouse works problems by a damsite.*

*And Newton's course in Machine Design A
Is not much work but more like play.*

*However, you must weigh and stir with lots of care
To please Dr. Lorah, so he doesn't swear.*

*Hyde can teach you a lot of statics,
And make you sigh if you failed to get mechanics.*

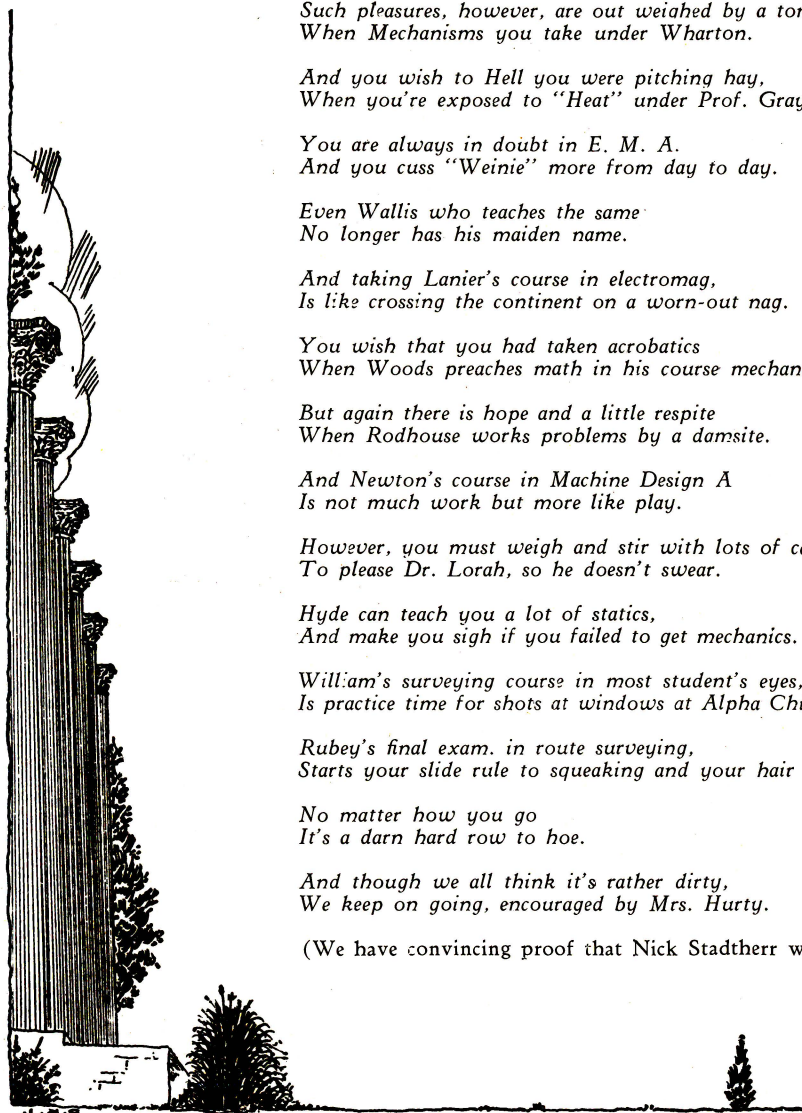
*William's surveying course in most student's eyes,
Is practice time for shots at windows at Alpha Chi's.*

*Rubey's final exam. in route surveying,
Starts your slide rule to squeaking and your hair to greying.*

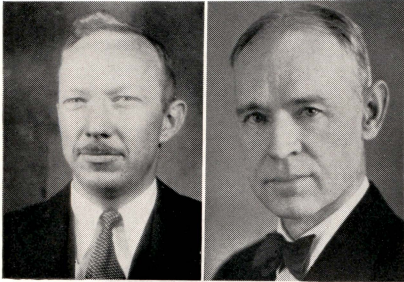
*No matter how you go
It's a darn hard row to hoe.*

*And though we all think it's rather dirty,
We keep on going, encouraged by Mrs. Hurty.*

(We have convincing proof that Nick Stadtherr wrote the above.)



The 1933 Shamrock



E. S. GRAY
Assoc. Professor of Mechanical En-
gineering.
S. B., M. I. T., 1925.

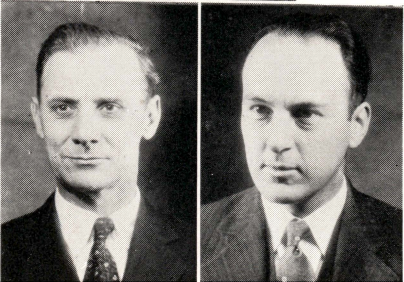
A. L. HYDE
Professor of Bridge Engineering.
Ph. B., Yale, 1886.



M. M. JONES
Assoc. Professor of Agricultural En-
gineering.

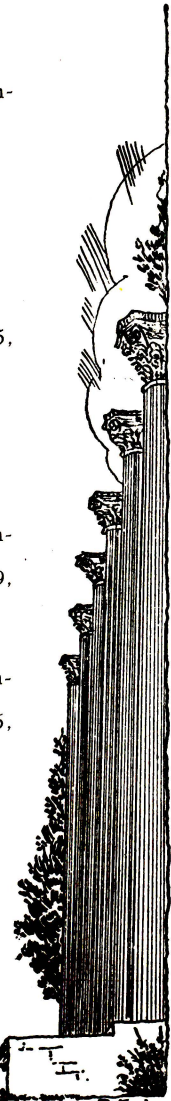


A. C. LANIER
Professor of Electrical Engineering.
B. S. in E. E., 1900, M. E. 1905,
Tenn.; M. E. E., Harvard, 1909.



H. A. LARUE
Assoc. Professor of Highway Engin-
eering.
B. S. in C. E., 1907, C. E., 1909,
Missouri.

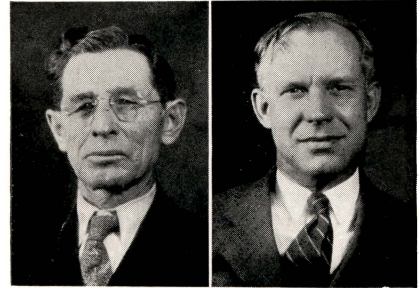
J. R. LORAH
Assoc. Professor of Chemical Engin-
eering.
B. S. in Ch. E., 1921, M. S., 1925,
Ph. D., 1927, Washington.



The 1933 Shamrock

E. J. MCCAUSTLAND
Dean of Faculty Professor of Sanitary
Engineering.
B. S. in C. E., 1892, C. E., 1895,
Cornell Col.; M. C. E., Cornell, 1897.

W. H. MILLER
Instructor in Mechanical Engineering.
B. S. in Ed., 1925, Missouri.



G. D. NEWTON
Professor of Mechanical Engineering.
B. S. in M. E., 1896, M. E., 1917,
Michigan.

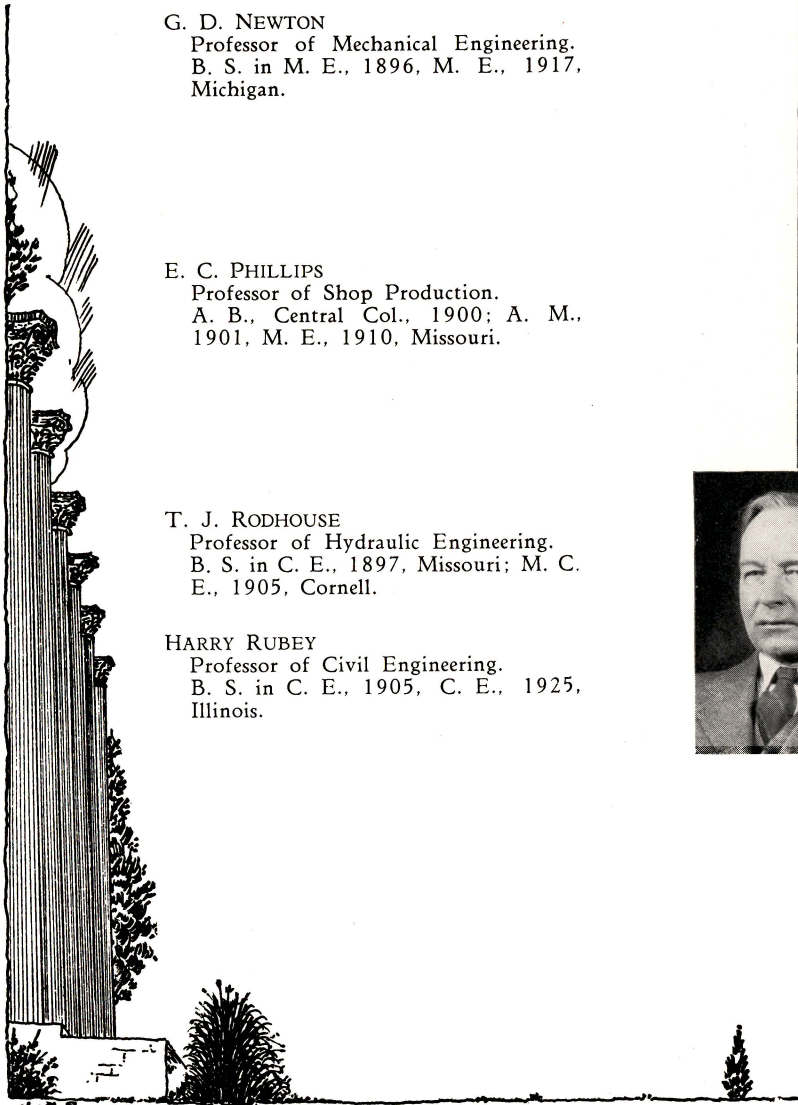


E. C. PHILLIPS
Professor of Shop Production.
A. B., Central Col., 1900; A. M.,
1901, M. E., 1910, Missouri.

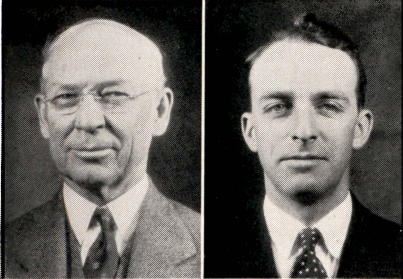


T. J. RODHOUSE
Professor of Hydraulic Engineering.
B. S. in C. E., 1897, Missouri; M. C.
E., 1905, Cornell.

HARRY RUBEY
Professor of Civil Engineering.
B. S. in C. E., 1905, C. E., 1925,
Illinois.



The 1933 Shamrock



R. W. SELVIDGE
Professor of Industrial Education.
B. Pd., Central Missouri State Teachers
Col., 1900; B. S., 1908, M. A., 1909,
Columbia.

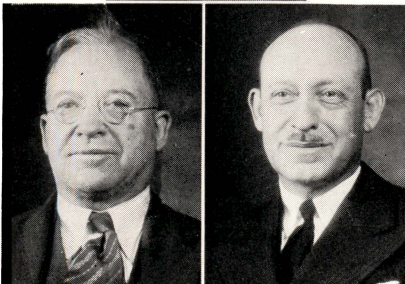
C. M. WALLIS
Instructor in Electrical Engineering.
B. S. in E. E., 1926, Vermont; M.
S. in E. E., 1928, M. I. T.



M. P. WEINBACH
Professor of Electrical Engineering.
A. B., 1905, B. S. in E. E., A. M.,
1907, Missouri.

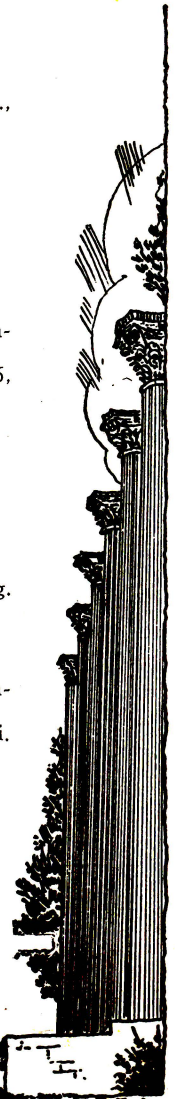


J. R. WHARTON
Assoc. Professor of Mechanical En-
gineering.
B. S. in M. E., 1905, M. E., 1906,
Missouri.



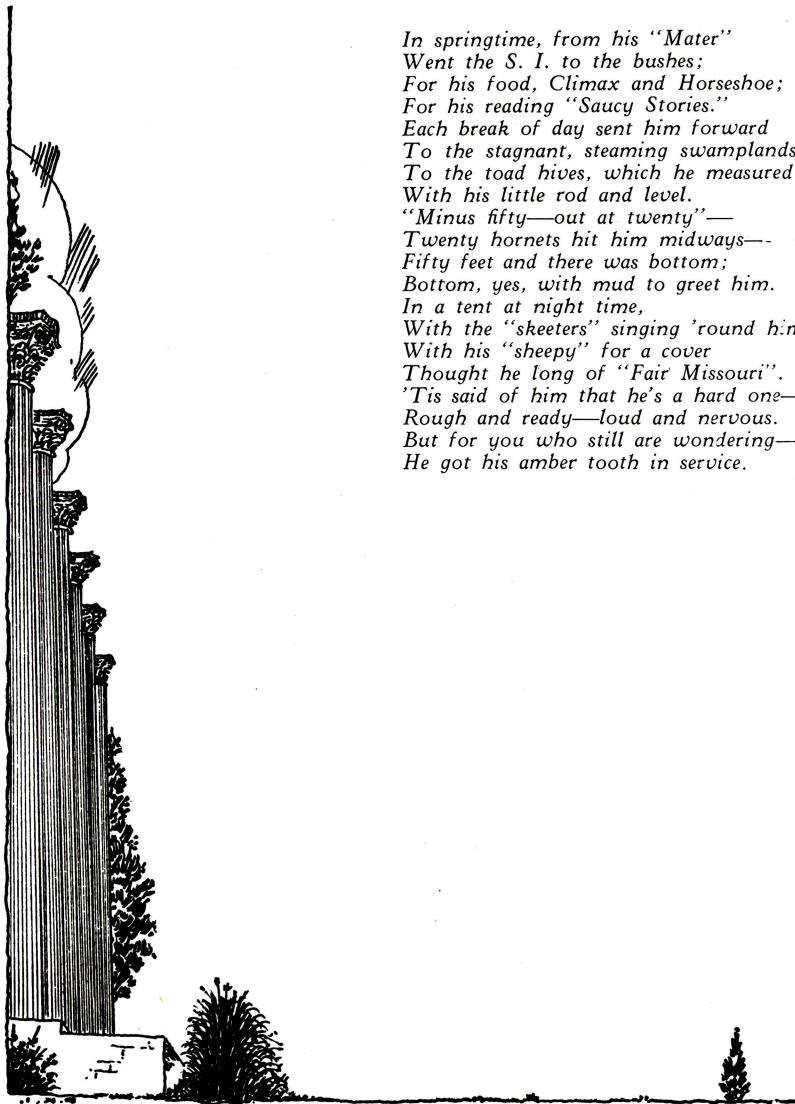
W. S. WILLIAMS
Professor of Topographic Engineering.
C. E., 1885, Missouri.

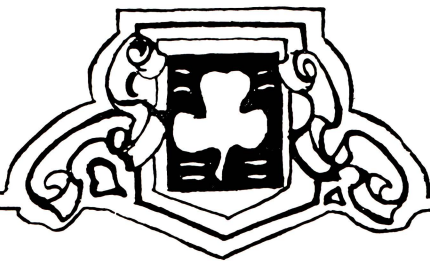
H. W. WOOD, JR.
Assoc. Professor of Mechanics in En-
gineering.
B. S. in C. E.; C. E., 1925, Missouri.



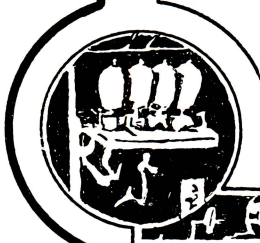
A Reverie

*In springtime, from his "Mater"
Went the S. I. to the bushes;
For his food, Climax and Horseshoe;
For his reading "Saucy Stories."
Each break of day sent him forward
To the stagnant, steaming swamplands;
To the toad hives, which he measured
With his little rod and level.
"Minus fifty—out at twenty"—
Twenty hornets hit him midway—
Fifty feet and there was bottom;
Bottom, yes, with mud to greet him.
In a tent at night time,
With the "skeeters" singing 'round him,
With his "sheepy" for a cover
Thought he long of "Fair Missouri".
'Tis said of him that he's a hard one—
Rough and ready—loud and nervous.
But for you who still are wondering—
He got his amber tooth in service.*



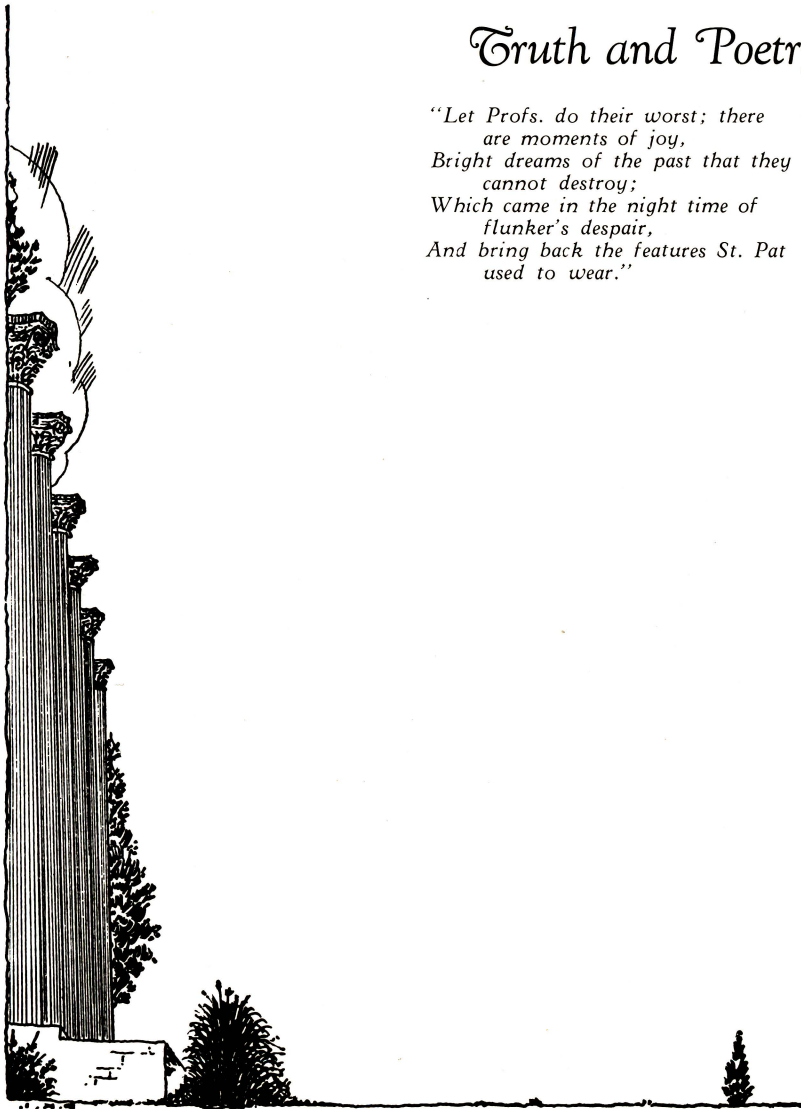


BLARNEY.



Truth and Poetry

*"Let Profs. do their worst; there
are moments of joy,
Bright dreams of the past that they
cannot destroy;
Which came in the night time of
flunker's despair,
And bring back the features St. Pat
used to wear."*



The Ugliest Man in Our College



H. RALPH AMBRUSTER

H. Ralph Ambruster, the people's choice for such an esteemed position, was born in St. Louis, Mo., July 9, 1906.

Little did the people of the community know that the birth-date of this great man was to go down in the annals of time and history as the birthdays of a man who would rival Trader Horn for his yarns, Thomas Edison for his inventions, and Will Rogers for his criticisms; not to mention Chic Sales and Henry Ford for their minor accomplishments.

His early life as child was not extraordinary or exceptional from that of any normal child, but he showed the keenest interest in all mechanically operated contrivances such as the family time piece, the car, the door-bell, the canary, and the cat. These scientific investigations formed the nucleus of his great inventive mind that would later on benefit man-kind and further technocracy.

The above picture shows him making a scientific research to determine the coefficient of wear on steps due to sweeping.

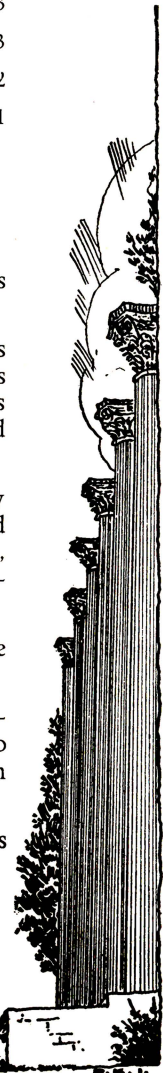
Howard Goodrich was a competitor for the coveted honor but was disqualified. The judges claimed that the service in the Marines, in which he had to make faces at the Filipinos and Nicaraguans to intimidate them, gave him an unfair advantage.

D. K. Jackson, of the Jefferson City Jackson, would have polled more votes if he were not so tall.

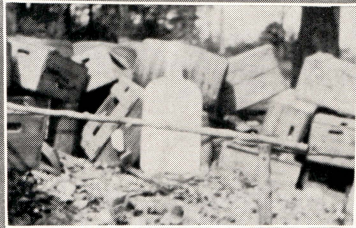
It also appears that the memory of Gundlefinger still lingers on.

Results

AMBRUSTER	83
JACKSON	11
PHILLIPS	10
ROBINS	9
HOLMBERG	5
"POPEYE"	3
HOT WAD II	3
ELSNER	3
WHARTON	2
GUNDFEFINGER	1



The
1933 Shamrock



A MECHANICAL "BUST."



TOUGH GUY.



THE USUAL SCENE.



BAM / GO.



LOOK WHO'S HERE.



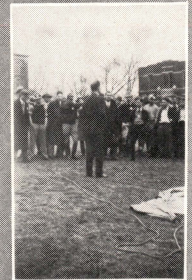
WHAT TA MAN.



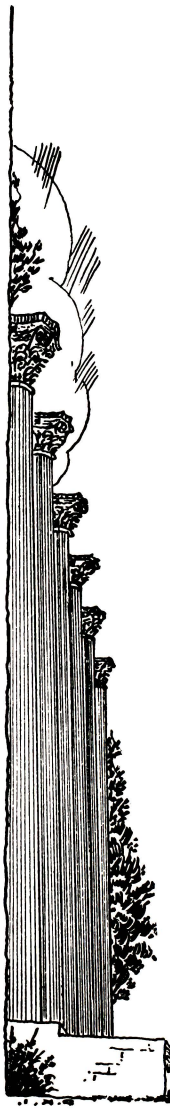
STUNT.



SR. ELECTRICALS AT XMAS TIME.



DEDICATION



Engineers !!

The Advertisers in the SHAMROCK have made possible its publication this year.

Back the Engineering School by PATRONIZING these ADVERTISERS.

Reciprocate by Patronizing our Advertisers.

GAEBLER'S BLACK & GOLD INN

Central Missouri's Newest and Most Modern Cafe

Music Every Afternoon and Evening

Adjoining GAEBLER'S BLACK & GOLD INN

GAEBLER'S CLUB DINER

open all night

CONLEY AVENUE

COLUMBIA, MO.

Bill: Ethel's a toe dancer now.

Sam: What makes you say that?

Bill: Just look at my shoes.

SHAMROCKS FOR LUCK
BLACKMORE

PHOTOGRAPHS FOR REMEMBRANCES

DIAL 7436

910a Bdwy.

**Congratulations to the
Staff of the SHAMROCK**

Preparation and production of your 1933 SHAMROCK constitutes a notable achievement of which you may well be proud. Bechtold Company is gratified at having designed and fabricated the cover for such a fine yearbook.

We are also proud of the fact that so many schools turn to Bechtold for the yearbook covers, again and again. We regard this as evident appreciation of the beauty and durability of our product, as well as our success in embodying the school spirit and yearbook theme, in cover design.

Bechtold Company

Cover Manufacturers

200-212 Pine Street

ST. LOUIS, MO.

Fredendall's

3 Floors of Quality Merchandise

Columbia's Dependable Department Store

**THE
BOONE COUNTY TRUST COMPANY**

COLUMBIA, MO.

Our Motto:
Service to Customers and Community

Don't hesitate to

Ask Mr. Pepper what the New Englanders do when they can't fish.

Ask Griswold where he gets all his humorous (?) remarks.

Ask Ambruster and Whitebread about Roddy's remark, "You can have her now, boys."

Ask Beers what was the trouble that night on the bench in front of the Engineering Building when the girl had to neck him.

Ask Cunningham what silhouettes show.

Geo. Wolf

Offers

Better Shoe Rebuilding

For Those Who Care

9 S. 9th.

Boone Co. Nat'l. Bank Bldg.

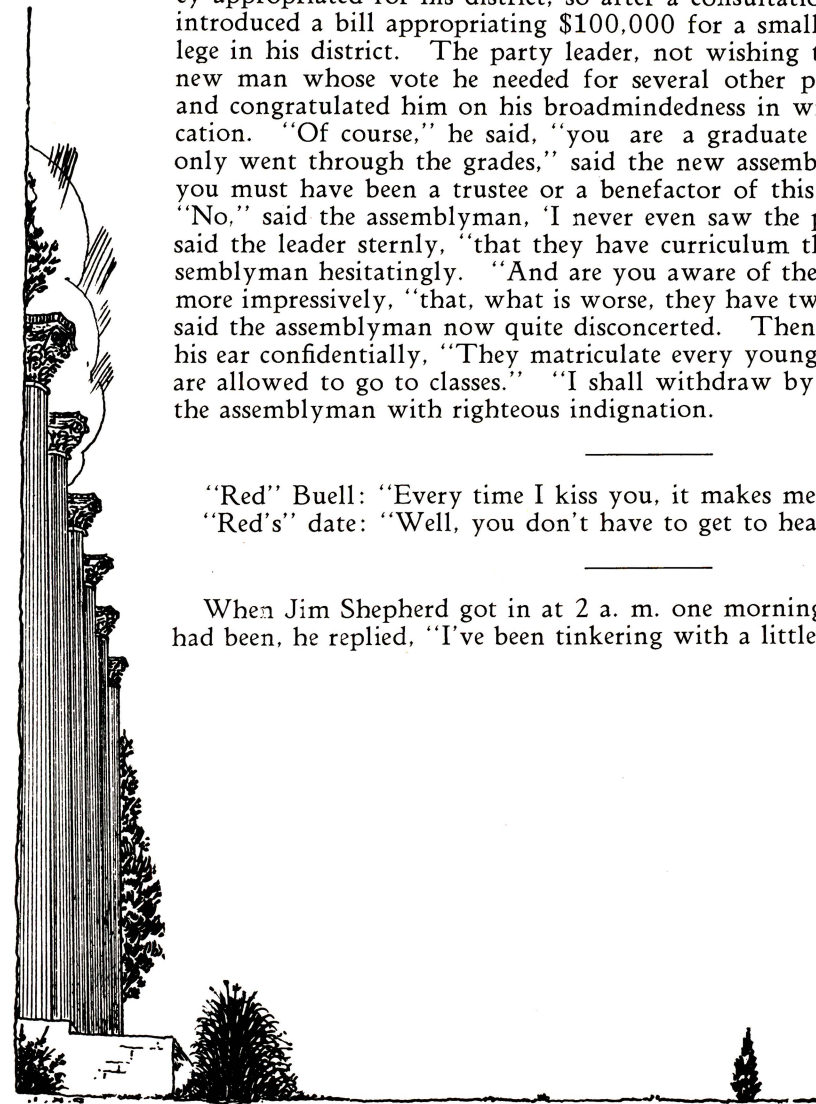
Call It Diplomacy

An uneducated man was once elected to the legislature from the backward part of the state. He had heard that every assemblyman tried to get some money appropriated for his district, so after a consultation with his backers he introduced a bill appropriating \$100,000 for a small, obscure, second-rate college in his district. The party leader, not wishing to offend and alienate the new man whose vote he needed for several other purposes, went to see him and congratulated him on his broadmindedness in wishing to help higher education. "Of course," he said, "you are a graduate of this college." "No, I only went through the grades," said the new assemblyman modestly. "Then you must have been a trustee or a benefactor of this college," said the visitor. "No," said the assemblyman, "I never even saw the place." "Do you know," said the leader sternly, "that they have curriculum there?" "No," said the assemblyman hesitatingly. "And are you aware of the fact," said the leader still more impressively, "that, what is worse, they have two semesters there?" "No," said the assemblyman now quite disconcerted. Then the leader whispered into his ear confidentially, "They matriculate every young man and girl before they are allowed to go to classes." "I shall withdraw my bill at once," exclaimed the assemblyman with righteous indignation.

"Red" Buell: "Every time I kiss you, it makes me a better man."

"Red's" date: "Well, you don't have to get to heaven on the first night."

When Jim Shepherd got in at 2 a. m. one morning and was asked where he had been, he replied, "I've been tinkering with a little miss in my car."



THE CO-OP ---

Where a complete line of test books, School Supplies, drawing instruments, and athletic goods are carried. Take advantage of the 13½% Profit Sharing Dividends which are issued for all Purchases.

Trade at The Student's Store

Basement Jesse Hall

What made Grumich drop that Stephens girl so quick? Was she hot?

For years and years the two sexes have raced for supremacy. Now they have settled down to neck and neck.

We understand that the "Duke" likes the top bunk in double-deck beds!

OUT-OF-TOWN HEADQUARTERS HERE

IS

THE TIGER HOTEL

*The Hotel of Home service—
where there is no such thing
as a stranger.*

VISIT HOME
the
Economical Way
Use Long Distance
MISSOURI TELEPHONE CO.

Prof. Weinbach (in A. C.): "Vot iss resistance, Cunningham?"
Dick Cunningham: "Resistance is something most girls have heard of, but few practice."

Mr. E. S. Gray pens the following on a Heat A report of an enterprising engineer: "This constant is not a constant!"
Can you beat it?

Ladd (in E. M. B.): "Are we supposed to be able to sit down and derive all these equations given in our E. M. B. book?"
Prof. Lanier: "Well, I'm not interested in the posture you use but you should know the fundamental principles involved."

Definition of a gold-digger: A co-ed who has lost her amateur standing.

The Great A & P Tea Company
Quality
MEATS—GROCERIES
FRESH FRUITS & VEGETABLES

915 Broadway

DAILY CLEANERS

for

Quality Cleaning

909 Cherry

Phone 4113

Just because a man's mind is centered on figures, it's no sign that he's a mathematician.

Jo-Jo calls his girl "time and tide." She waits for no man.—Ask Gaebler! !

ENGINEERS!!!

It is **Q**

to


Dine and Dance at

HARRIS'

A. A. "Duck" Millard, Proprietor

(An old Engineer '12 to '16)

PRESCRIPTIONS



THE DRUG SHOP

Phone 4101

Art
Quality
Freshness

These three requisites are included in all Mueller floral bouquets and decorations because

"We Grow our Own"

H. R. Mueller
 MEMBER F.T.D.
FLORIST

STORE	GREENHOUSES
16 S. 9th	West Blvd. & Ash

Phone 6219

The hand that rocks the cradle is the hand that turned out the porch light.

Where were Cebe, Legg, and the two nurses going with the baskets and blankets the night they were seen crossing the golf links?

PORTRAITS--
—not just another photograph

Parson's Studio

\$5.00 Meal Ticket \$4.50

EVEREAT CAFE

440 South 9th. St.

L. Morris, Prop.

Regular Dinners 25c

Waffles

McGill says that "Love is just the sugar coating on a cake of trouble and that practically the same sensations may be experienced by longing for a cigarette while sitting in church."

Bonnot wants to know how to calculate the bally horsepower in a bloomin' donkey engine.

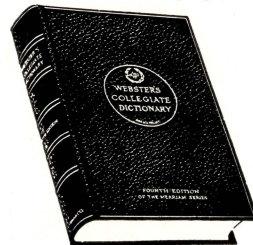


For Quick Reference

rely on Webster's Collegiate. 106,000 Vocabulary terms; dictionary of Biography; Gazetteer; rules of punctuation; the use of capitals, abbreviations, etc.; foreign phrases. 1,268 pages. 1700 illustrations.

Webster's Collegiate

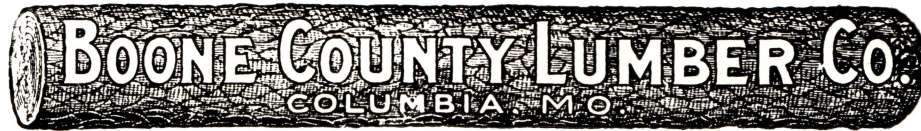
4th EDITION—NEW LOW PRICES
The Best Abridged Dictionary. Thin-Paper Edition: Cloth, \$3.50; Fabrikoid, \$5.00; Leather, \$7.00. At your bookseller or from the publishers. Write for free booklet of interesting questions and answers—12 entertaining quizzes.



G. & C. Merriam Co.

100 Broadway

Springfield, Mass.



Phone 5422

Somebody ask the Shamrock Editor what kind of implements of warfare he keeps in his desk. If he won't tell, then ask some of the Staff. You guys would be surprised.

“What's the professor talking about?”

“Integration, half-wit.”

“Is he for it or against it?””

DIAL 3114

Dorn-Cloney Laundry and Dry Cleaning Co.

SUITS DRESSES OVERCOATS

CLEANED AND PRESSED

**WHERE ST. PAT BUYS HIS
BOOKS AND SUPPLIES**



Missouri Store Co.

Opposite University Library

COLUMBIA, MISSOURI

A New Deal!

SUITS

FOR YOUNG MEN

at

\$14.75

**HONOR VALUES
IN
CAMPUS
SMARTNESS!**

Style's the thing today's young fellows demand in clothes. Every detail must be precisely right — as right as Penney's has done them in this new clothing deal!

From correctly modelled coat right down to the well-fitted, easy-hanging trousers . . . these suits measure up to young America's standards! And, don't forget, the selection exceeds all expectations in finer fabrics — *s m a r t e r* patterns — all-around value!



J. C. PENNEY CO. INC.

Columbia, Missouri

We Are Back of You Students

THE CENTRAL DAIRY

When You Want the Best in Dairy Products

Ask for CENTRAL

Amendments may come and go, but CENTRAL milk will be drunk forever.

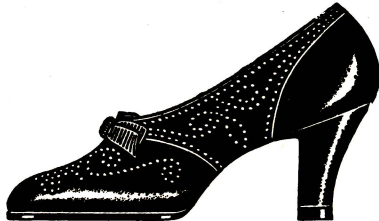
Dimmick: "My girl is expecting twins—"

Lewis: "My God! is that true?"

Dim: "Yes. Twin sisters from St. Louis are coming to visit her for a few weeks."



The Wembley Oxford in white pig-grey pig and biege pig.
Price \$6.00



The Swaggar Pump in white kid, grey kid and black kid.
Price \$6.00

**Collegetown presents
this new spring style.**

These are the smart new styles we are showing for spring 1933. They are the fashion's command. You'll be delighted with perforations and new continental toe. They are shoes that have everything—style, comfort, utility.

Collegetown Shoe Company

Columbia, Mo.

WESTINGHOUSE HEATING APPLIANCES

WESTINGHOUSE MAZDA LAMPS

G. E. WASHING MACHINES

JOHN L. PLATT

Electric Shop

Kelvinator Electric Refrigeration

Phone 5318

17 S. Ninth St.

Wopat finally discovered why they call it pre-war liquor. A fight always follows it.

Nowadays when a man speaks to the waiter in Italian, the waiter usually comes back with some Scotch.

PECK DRUG COMPANY

WHITMAN'S and STOVER'S BUNGALOW CANDIES

KODAKS, SPORTING GOODS

LUNCHEONETTE SERVICE

CLEANING

LAUNDRY

REPAIRING

TIGER LAUNDRY & DRY CLEANING CO.

"The Tiger Can't Be Beat"

Phone 4156

On Broadway at 1101

"Weinie" says that fool-proof electrical machinery was made for Civils to play with.

Why did Hanna go out the back door of the lumber company after he had tried to sell them a Shamrock ad?

Ralph Ambruster would have made a better grade in Graphics if he had not stepped on Prof. Hyde's dog so often. Ask Ambruster!

Zeki: "Meester Weinbach, do A. C. motors 'race'?"

Prof. Weinbach: "No, Zeki, A. C. motors don't 'race'; they have another sport called 'hunting'."

Prices are not exorbitant at this store
BUY YOUR SPRING SUIT—NOW
Priced from \$15.00 to \$22.50

It Pays to Trade at

BARTH'S

817-21 Broadway

J. J. NEWBERRY CO.

Columbia's

LEADING 5-10-25c STORE

806 Broadway

Phone 4345

We won't see Charlie any more,
We won't see Charlie any more,
For what he thought was H₂O.
Was H₂SO₄.

Father: "When I was your age, son, I was glad to get dry bread to eat."
Bright Five-Year-Old: "You're much better off now that you are living
with us, aren't you, daddy?"

Rosie McGirl says that love is just the sugar coating on a cake of trouble.

Buell says that many a negative girl has been developed in the dark.

THE MISSOURI DRUG CO.

Next door to the Missouri Theatre

PRESCRIPTIONS

SUNDRIES

FOUNTAIN

Phone 6332

Delivery Service

School Annuals and High Grade
Catalogue Work are Our Specialty



With the Most Modern Equipment in every department of our plant we offer discriminating buyers an opportunity to secure High Grade School Annuals and Catalogues at moderate prices and with an unsurpassed personal interest and service for every job.

Specialization insures a better product with assured economy—that's why we specialize, and are equipped for this class of printing.

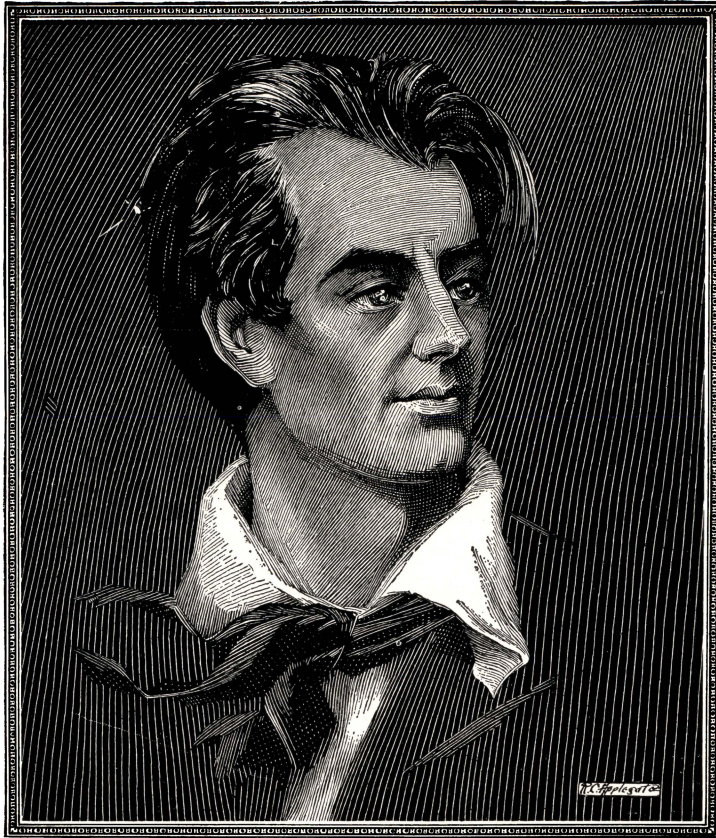
Dozens of schools in four states are numbered among our customers for school annuals.



PRINTING DEPARTMENT OF

The Oswego Democrat

Oswego, Kansas



*A Fine Portrait is a true
expression of a personality*

The Ideal Year Book is a portrait of school life expressing
the personality of the institution which it represents.

The Indianapolis Engraving Co. through its *Annual Planning
& Service Department* can help you express in your year
book the true personality and tradition of your school

Write for Information

This Book Engraved by

The Indianapolis Engraving Co. Wulsin Bldg. Indianapolis



Autographs

Autographs

Autographs

F i n i s

UNIVERSITY OF MISSOURI - COLUMBIA
ENG ENGR 454083

T171.M86 S5 1933



010-011470375